

A light blue and teal watercolor wash background with soft, blended edges, centered on a white page.

# Portfolio 1: Programming

Leah Thompson 3102 Fall 2019

# The Impact of Aging on the Eye

## As we age we experience:

- Yellowing and browning of the eyes due to UV exposure and debris
- Pigment splotches and floaters
- Conjunctiva thinning
- Blue hue can be caused by transparency of the sclera

## Design Goals:

- Making a functional living area for those who are experiencing vision loss due to aging through adequate furniture, wayfinding, clutter-free spaces and level surfaces.

## Common Diseases and Conditions:

### Age-related macular degeneration (AMD)

Central vision is slowly destroyed. AMD affects the ability to complete everyday tasks.



### Cataract

Lens become cloudy and blurry and colors become faded.



### Diabetic Eye Disease

Often times leads to blindness. Diabetes damages tiny blood vessels inside retina, causing splotchy vision loss.



### Glaucoma

Damage to the optic nerve and leads to vision loss and blindness. Peripheral vision is affected.



# Stakeholder Profile

## Client:

Developer



## Special Features

- 1,200 SF
- 1 Master, 1 Guest, 2 bath (Master attached, guest separate)
- Step-In Showers/tubs
- Balcony or Patio Options
- Full size kitchen
- Living room
- Laundry room/pantry
- Traditional and Minimalist Décor

## Owner:

Developer until senior citizens buy each unit

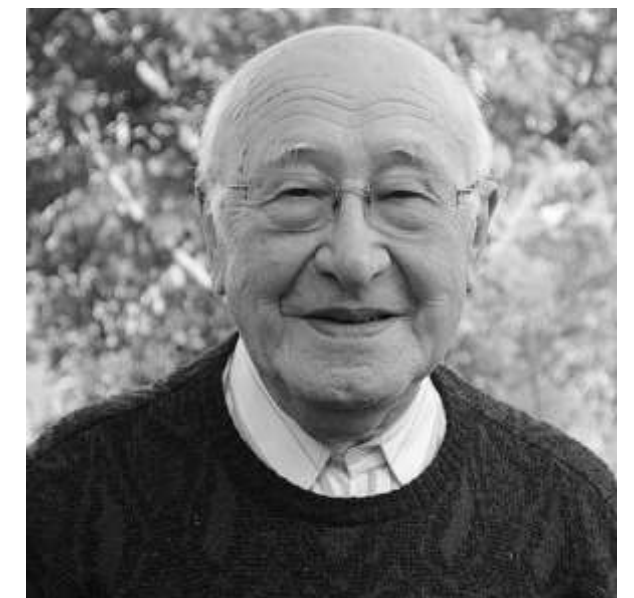


## Amenities

- Pool/Grill
- Fitness center
- Salon
- Game room/arts & crafts center
- Maintenance
- Library/computer room
- House-keeping
- Assigned parking

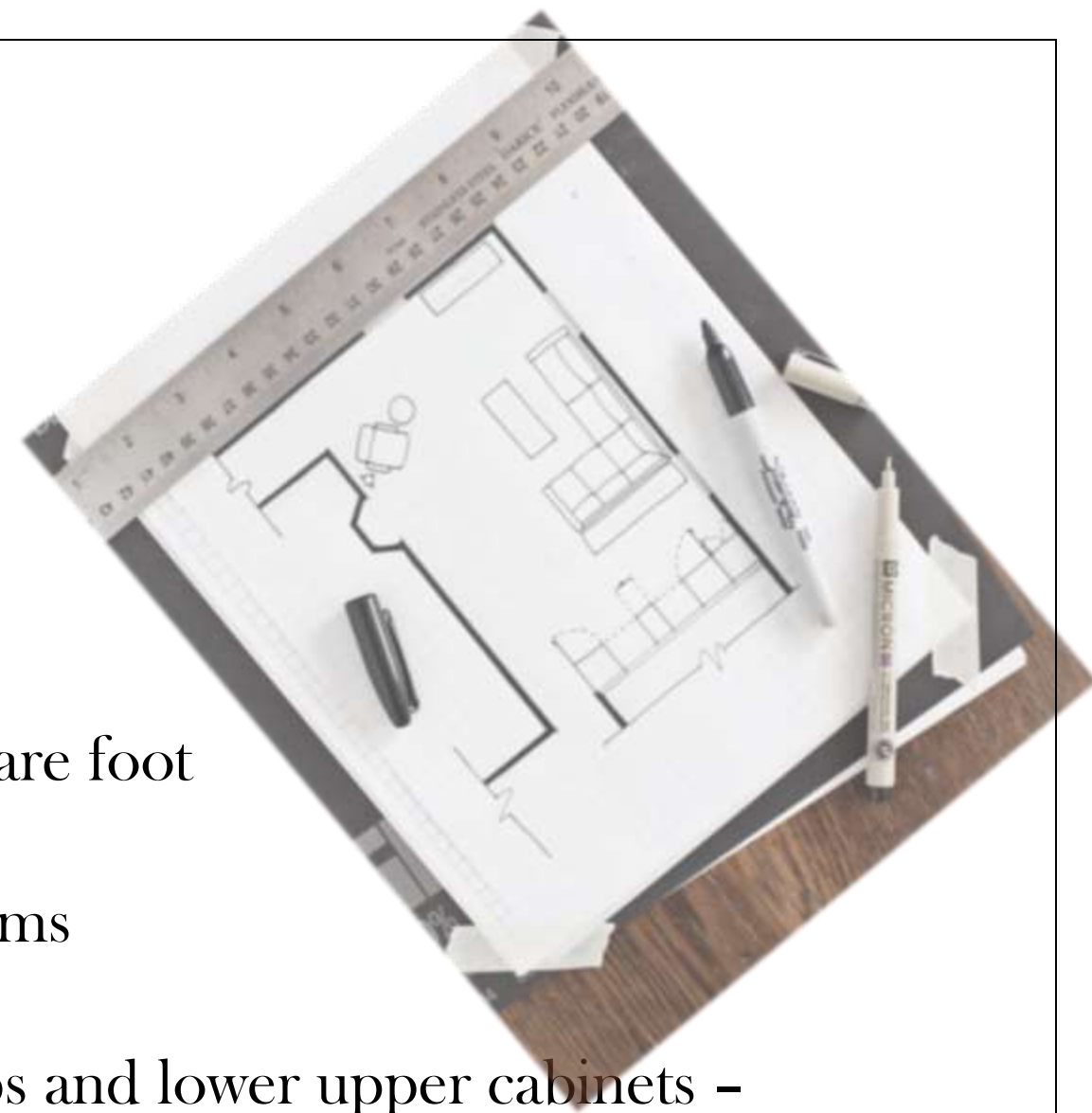
## User:

Senior Citizens

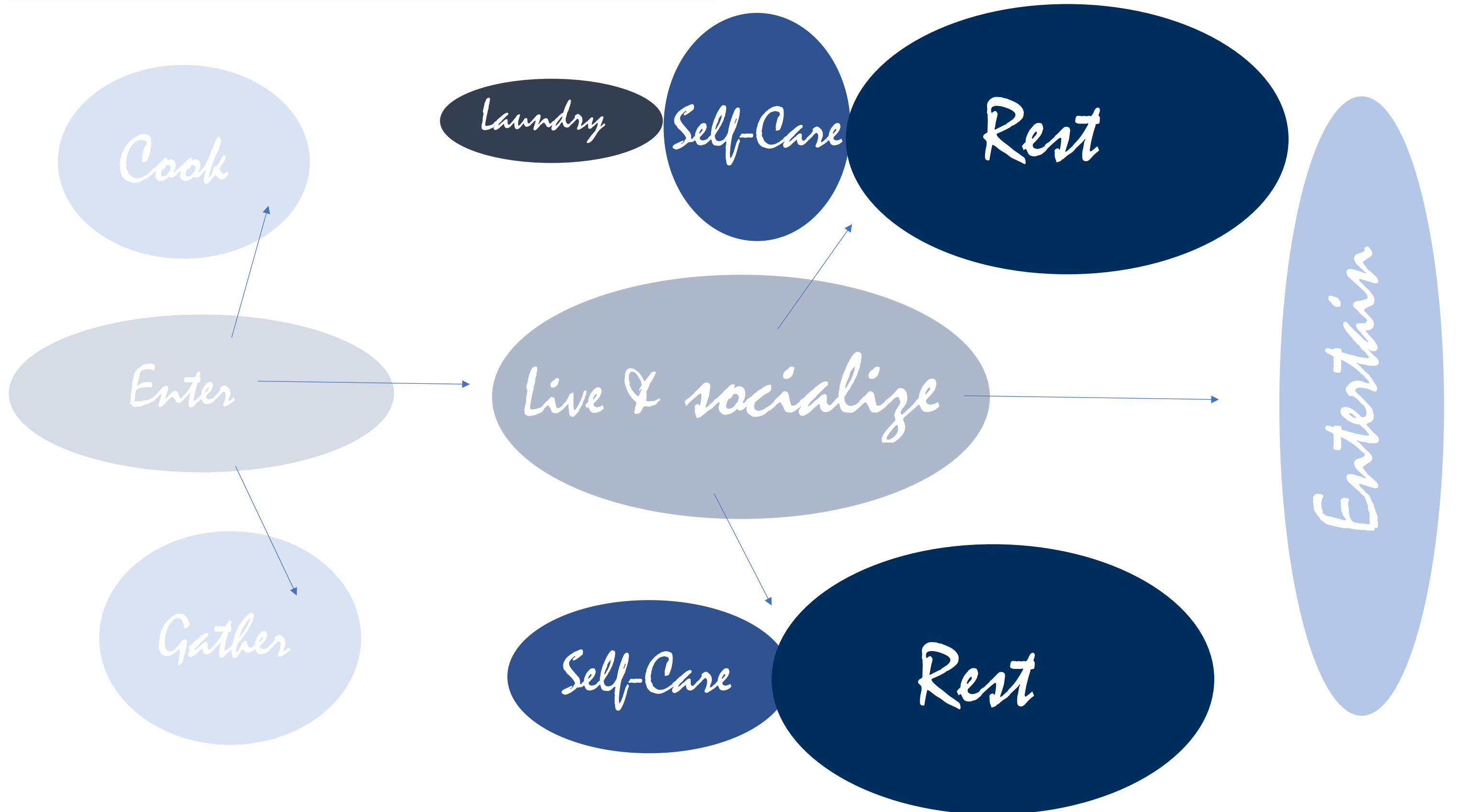


# Space Standards

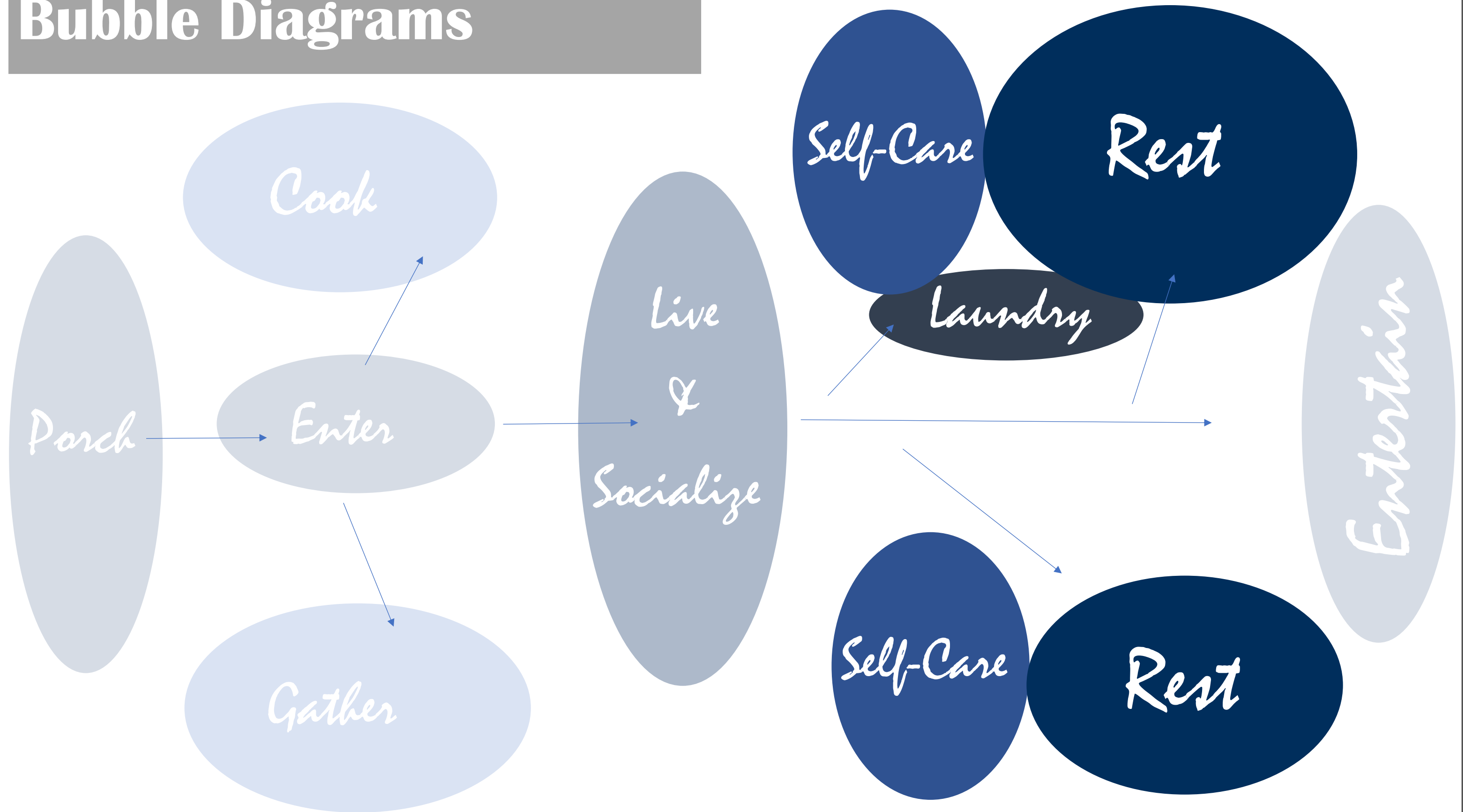
- 2 Bedroom layout
  - 1 Master Bedroom - 200 square foot
  - Secondary Bedroom allowing space for 2 beds- 150 square foot
- 2 Bathrooms
  - 1 Master Bathroom with walk in shower and movability - 150 square foot
  - Secondary Bathroom with bath shower - 130 square foot
  - Access to both bathrooms from the outside and inside the bedrooms
- Open Kitchen, dining, living
  - Kitchen with wheelchair and walker accessibility, lower countertops and lower upper cabinets - 200 square foot
  - Dining with wheelchair accessibility and room to move easily - 150 square foot
  - Living with comfortable furniture and chairs that can be lowered or lifted to help with sitting and standing - 200 square foot
- Back porch area to entertain and enjoy the outdoors with access from the bedrooms and living area - 300 square foot
- The average square footage of the entire space would be - 1,500 square foot



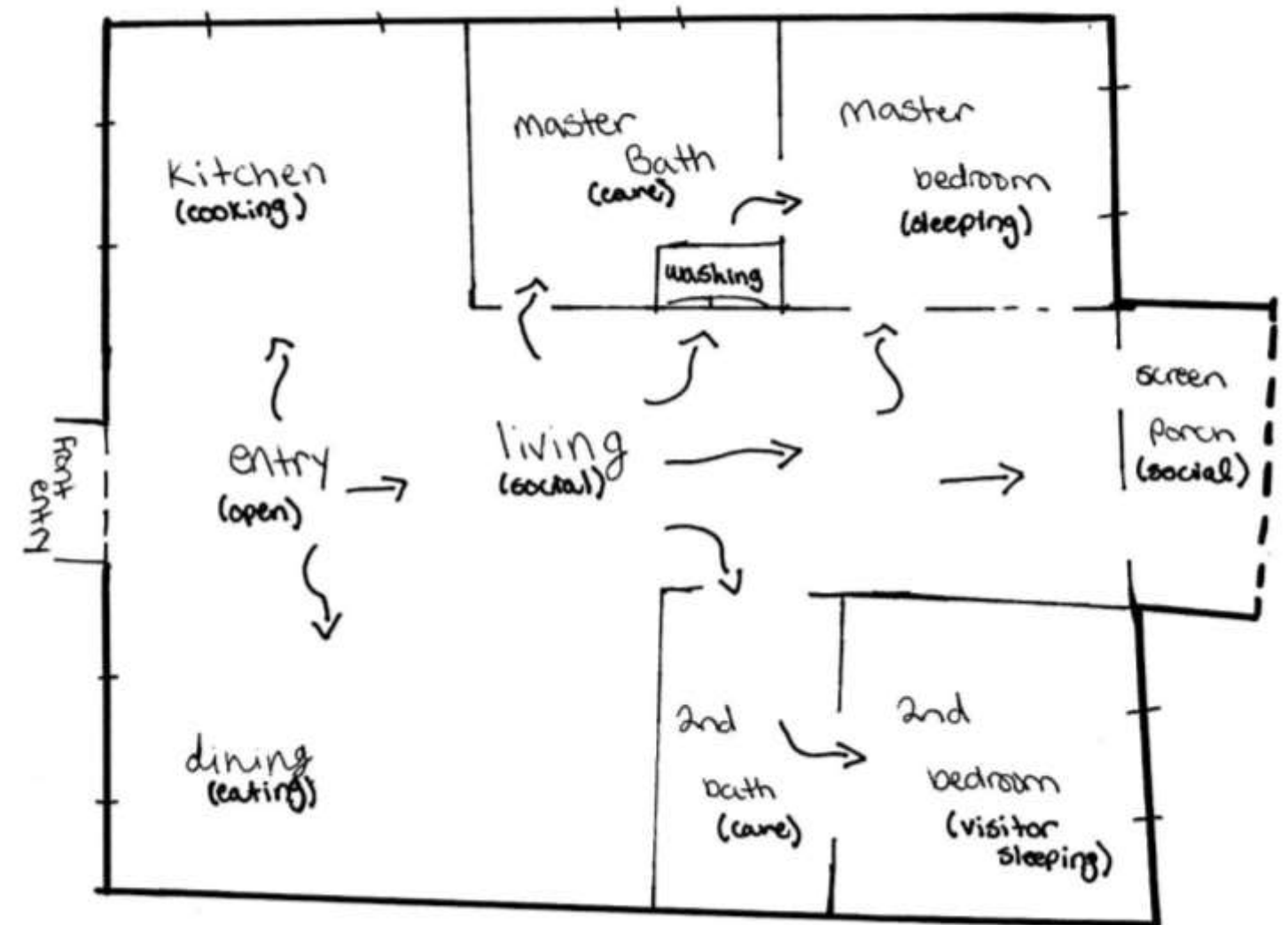
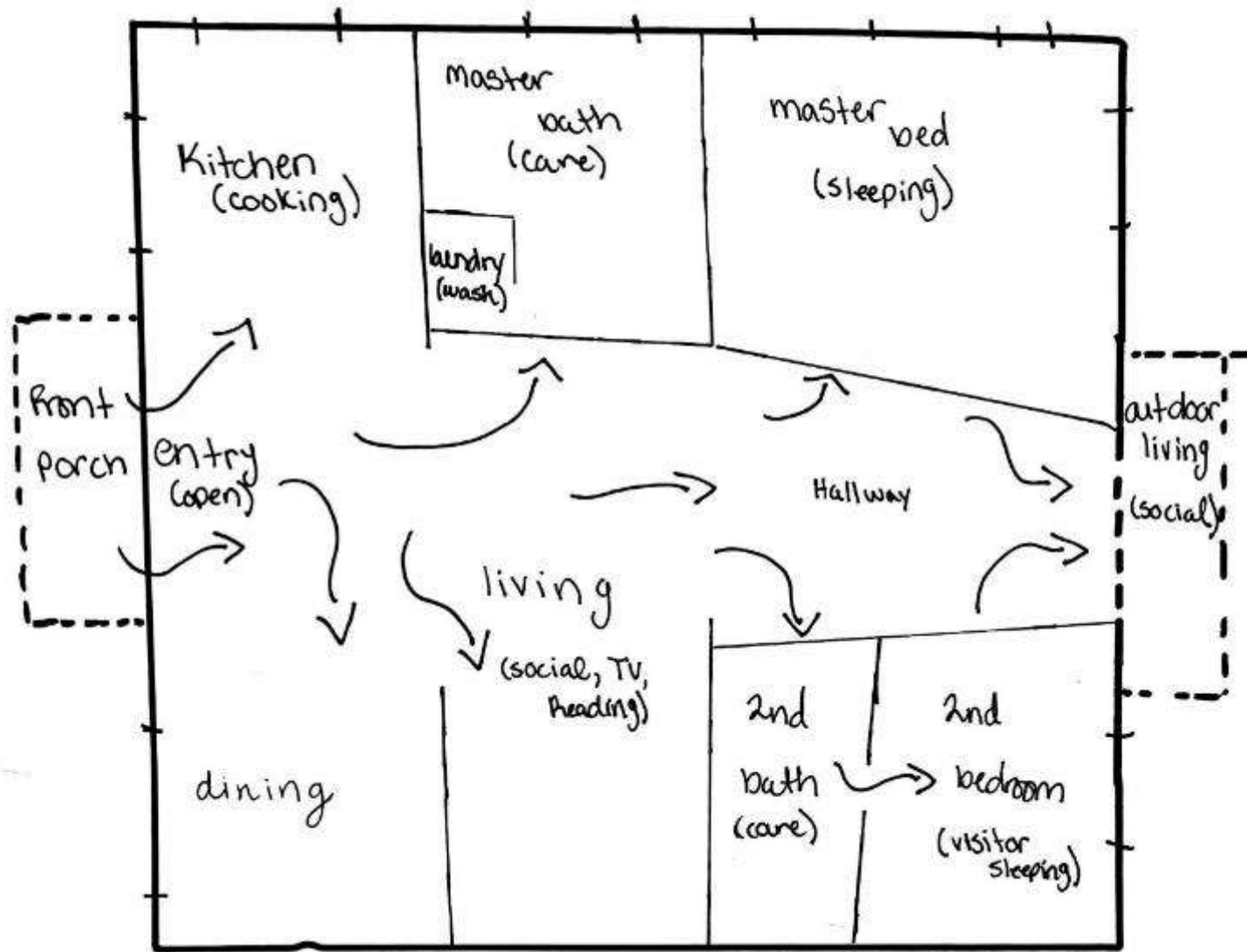
# Bubble Diagrams



# Bubble Diagrams



# Block Diagrams



# Concept & Inspiration

- A person will never lose the feeling of the comfort of the ocean. Bringing a space to an older generation that makes them feel happy and comforted by a coastal vibe.
- Using natural colors with pops of blue to calm the eye and remind the mind of a cozy coastal front cottage.

