



PORTFOLIO I

LAUREN MILLER

RESEARCH

- COLORS ARE SEEN WITH A YELLOW TINT AS RETINA GROWS OLDER
- DIFFERENT COLORS ASSOCIATED WITH DIFFERENT MOODS
 - RED – ENERGY
 - SOFT BLUE – CALM
 - GREEN – COMFORT
 - BROWN – SAFETY
 - PURPLE – CREATIVITY
 - ORANGE – APPETITE
 - WHITE – SPACE
 - BLACK – RELAXATION
- SENIORS RECEIVING ALZHEIMER'S AND DEMENTIA CARE IN MISSISSAUGA OFTEN HAVE ROOMS PAINTED IN THESE COLORS BECAUSE THEY CAN BE ESPECIALLY HELPFUL IN REDUCING ANXIETY AND BOUTS OF AGGRESSION ASSOCIATED WITH THESE CONDITIONS
- USING A COLOR SCHEME THROUGHOUT A SPACE WILL MAKE IT FLOW AND FEEL LARGER (ONE MAIN COLOR WITH A COUPLE ACCENTS), THIS WILL CREATE VISUAL INTEREST IN THE ROOMS, YET WON'T BE OVERWHELMING TO THE EYE
- COOL/MUTED COLORS BLEND TOGETHER AND CAUSE THE ROOM TO LOSE INTEREST
- THEREFORE, BLUE, GREEN, AND WHITE ON WALLS AND BEDDING MIGHT HELP THEM FALL ASLEEP EASIER AND SLEEP BETTER
- A LIGHT GREEN WITH POPS OF SOFT YELLOW IS A GREAT COMBINATION FOR COMMON LIVING SPACES
- THE GREEN WILL HELP ELDERLY CITIZENS FEEL AT EASE, WHILE THE YELLOW IS A NICE TOUCH IF HE OR SHE OFTEN READS, DOES PUZZLES, OR WORKS ON CROSSWORDS IN THE SPACE
- ADD CONTRASTING HUES TO LEVEL CHANGES IN FLOORS OR ANY AREA THAT MAY BE DIFFICULT TO NAVIGATE
- VARYING COLORS WORK BETTER THAN MONOCHROMATIC SCHEMES AS ITS EASIER FOR OLDER EYES TO DIFFERENTIATE BOLD HUES
- POPS OF COLOR INSTEAD OF WALL COLOR SO IT IS NOT OVERWHELMING
- THEY LIKE PASTEL SOFTER COLORS, BUT BRIGHTER COLORS ARE BETTER FOR THEIR MOODS/STIMULATION

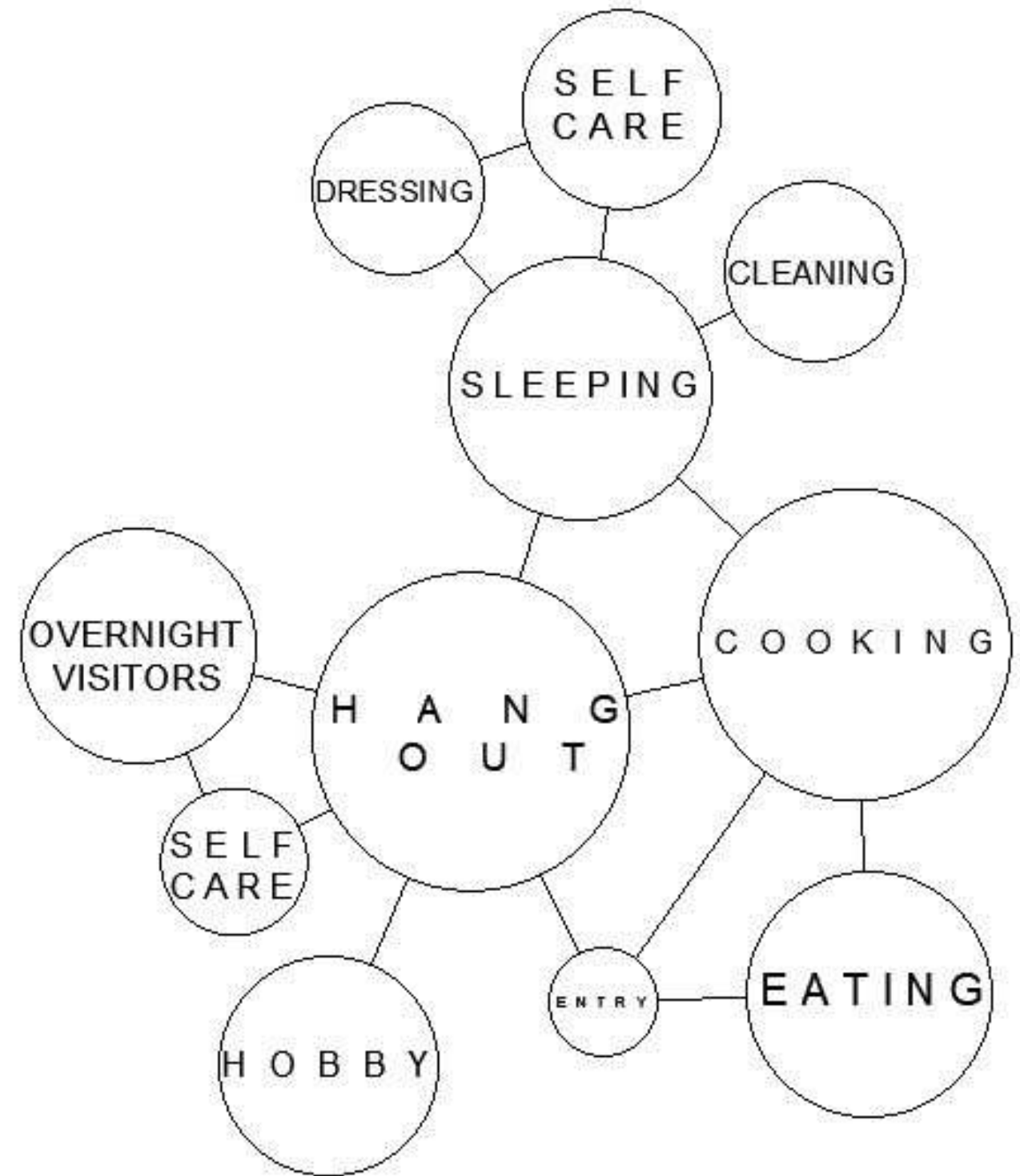
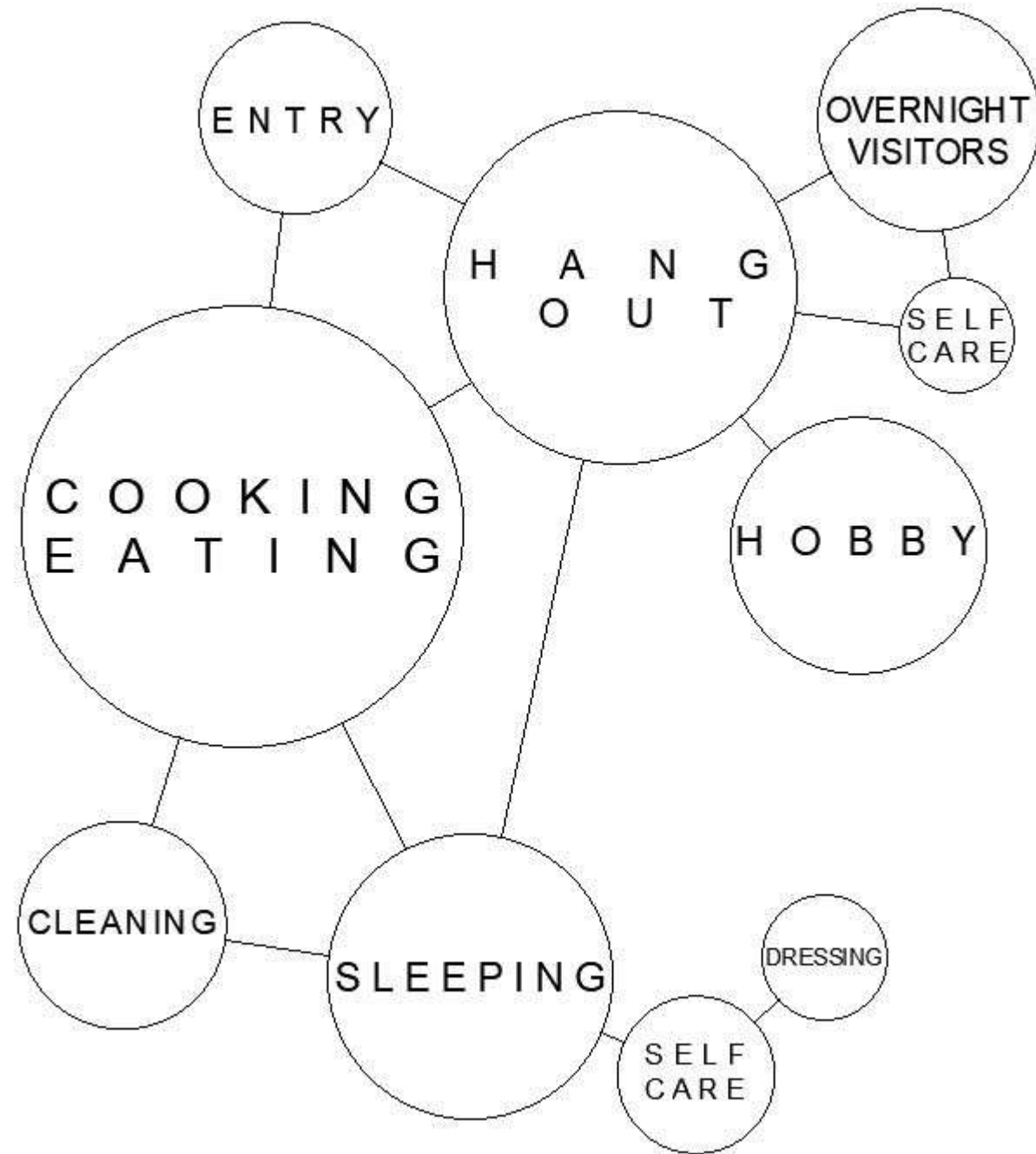


CLIENT/USER

- OWNER & CLIENT: DEVELOPER AND MANAGEMENT COMPANY
 - PREFER CHEAPEST MATERIALS FOR HIGHEST PROFIT
- USERS: 55 + RETIREES, ACTIVE, AFFLUENT RETIREES
 - PREFER HIGH END MATERIALS FOR REASONABLE RATES
- ATTRACTIVE DESIGN
 - WELCOMING ENVIRONMENT FOR RESIDENTS AND THEIR FAMILIES
- FUNCTIONAL SPACE
 - COMFORTABLE ROOMS FOR VARYING TASKS
- ACCESSIBILITY & COMFORT
 - DESIGNED WITH AGING RESIDENTS' NEEDS IN MIND
 - UNIVERSAL DESIGN: ACCESSIBLE TO ALL PEOPLE
- FLOOR PLAN
 - 2 BED 2 BATHROOMS
 - OPEN FLOOR PLAN IS PREFERRED



BUBBLE DIAGRAMS



SPACE STANDARDS

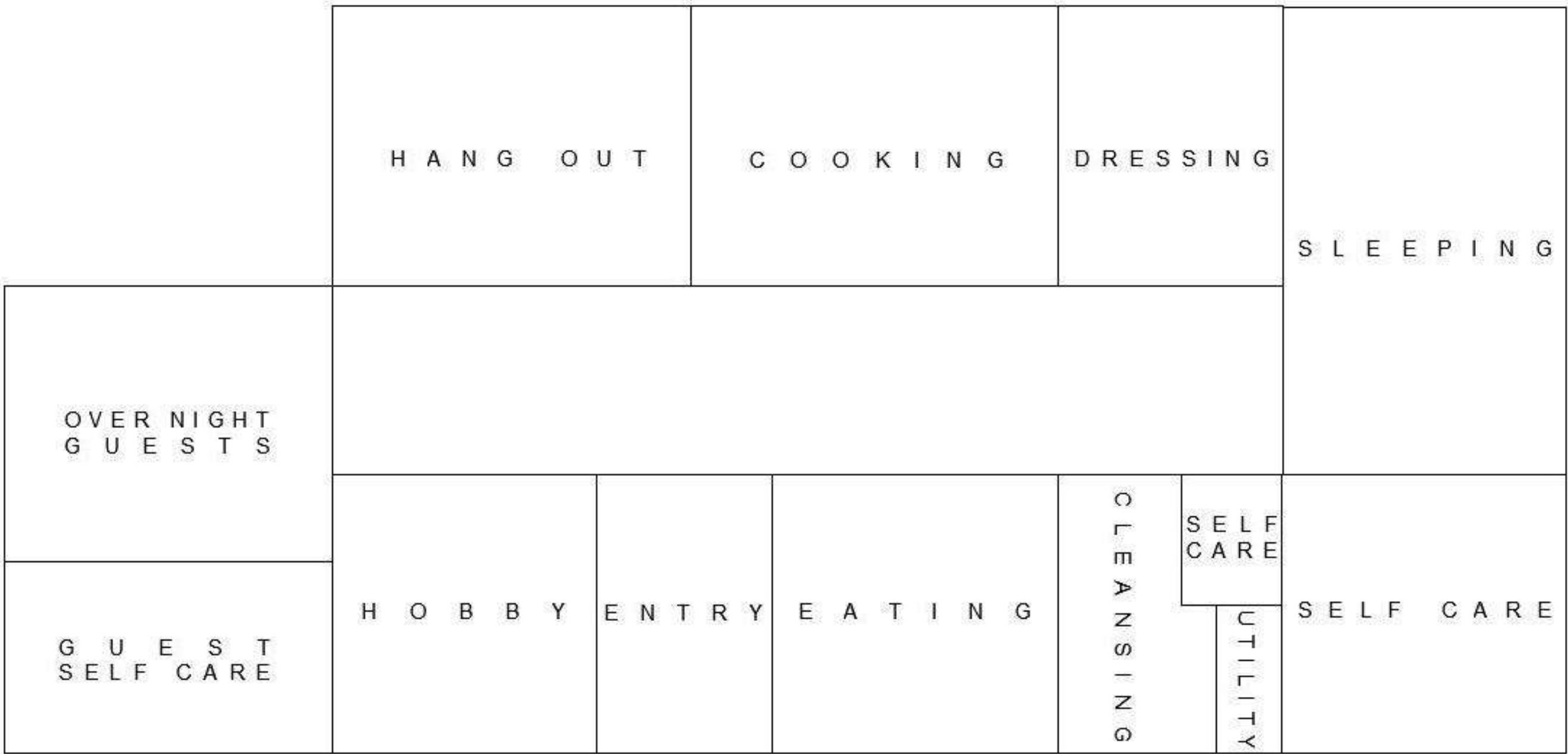
Square Footage		
Master Bedroom	300	20 x 15
Master Bathroom	150	10 x 15
Guest Bedroom	200	14 x 13
Guest Bathroom	100	10 x 10
Entry Foyer	150	10 x 15
Laundry	200	15 x 13
Kitchen	300	20 x 15
Dining Room	250	15 x 17
Living Room	350	17 x 20
Master Closet	100	10 x 10
Pantry	100	10 x 10
TOTAL	2200	

THIS INFORMATION IS BASED OFF OF ARTICALS WRITTEN BY THE NATIONAL ASSOCIATION OF HOME BUILDERS. THEIR FACTS WERE GATHERED BASED ON NEW HOMES BEING BUILT IN THE YEAR 2013.

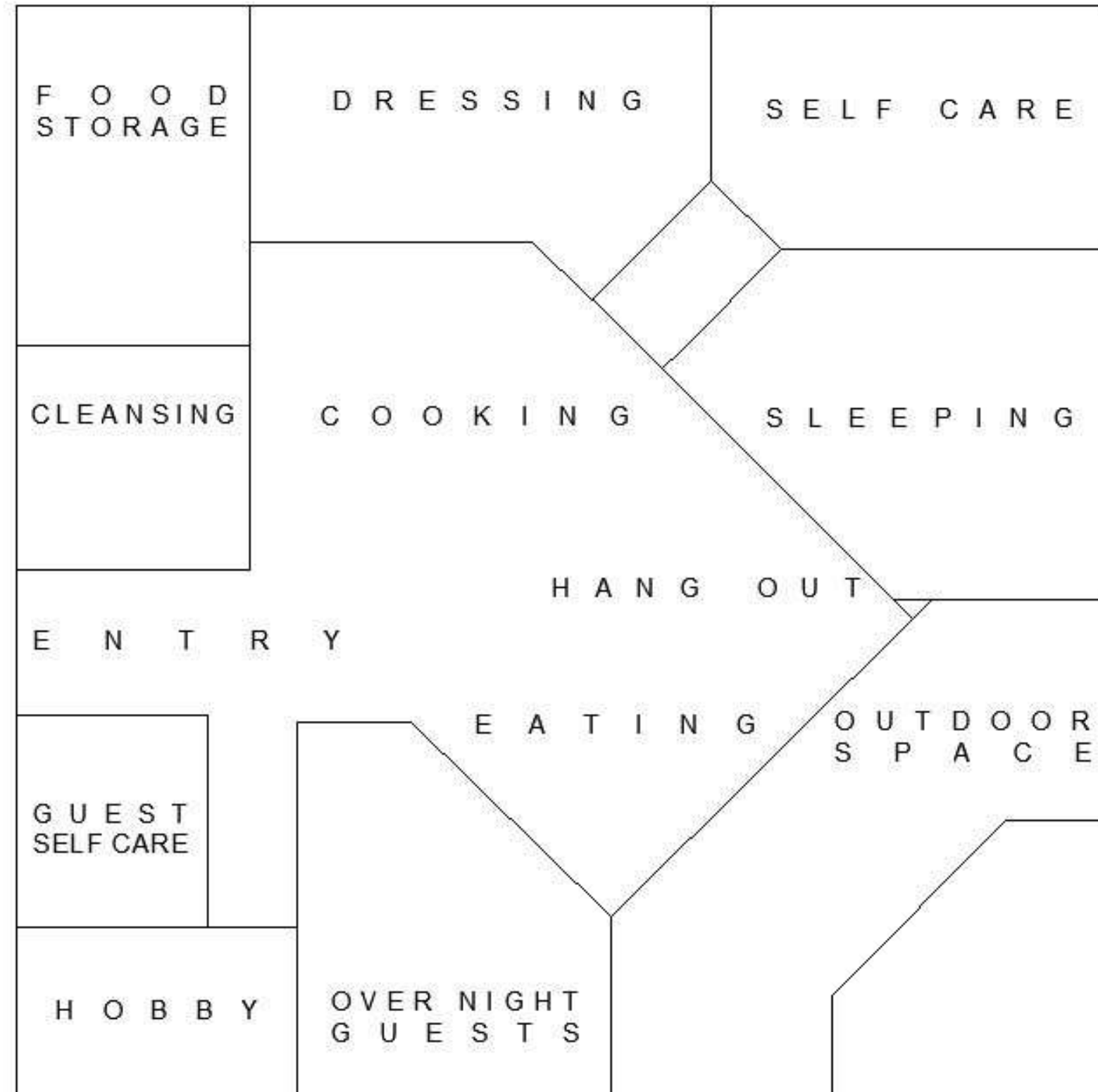
IT WAS DECIDED THAT THE HOME WOULD BE KEPT UNDER 2,500 SQFT TO ACCOMIDATE THE USERS ISSUES IN ACCSESSABILITY, WHILE ALSO KEEPING THE BURRDONS OF TAKING CARE OF THE SPACE TO A MINIMUM.

THE SPACES INCLUDED IN THE HOME REFLECT RESEARCH DONE ON COMPAREABLE COMMUNITIES, AND ON THE INTERVIEWS CONDUCTED WITH THE TARGET DEMOGRAPHIC.

BLOCK DIAGRAM



BLOCK DIAGRAM

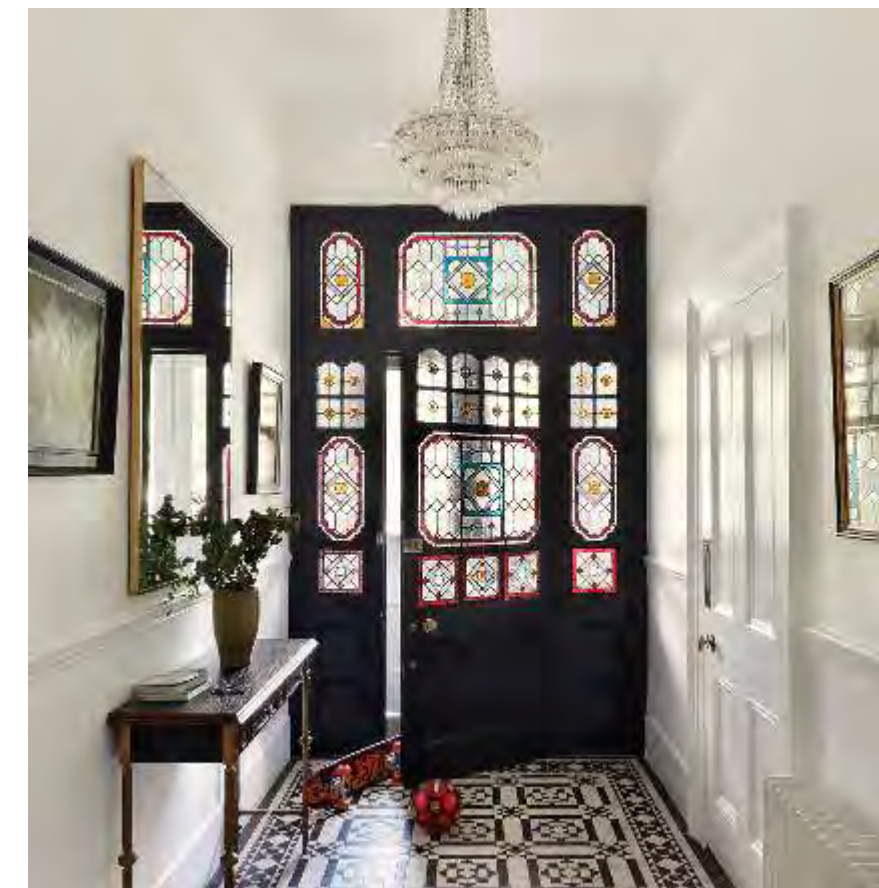


GRANDEUR

GRANDEUR - AN NOUN, FRENCH IN ORIGIN, MEANING A STATE OF BEING IMPRESSIVE, AND ELEVATED IN CONCEPTION

CHOSEN TO REFLECT THE ELEGANCE OF THE AGING POPULATION, THIS RICH COLOR PALETTE BRINGS A TOUCH OF MODERN TO THE TRADITIONAL DETAILS

THE CONCEPT OF CLASSICAL ARCHITECTURE WILL PLAY WITH THE POWERFUL DETAILS AND CREATE A STRIKING CONTRAST TO THE MONOCHROMATIC STRUCTURAL ELEMENTS OF THE SPACE



GRANDEUR

