

Preliminary Schematics

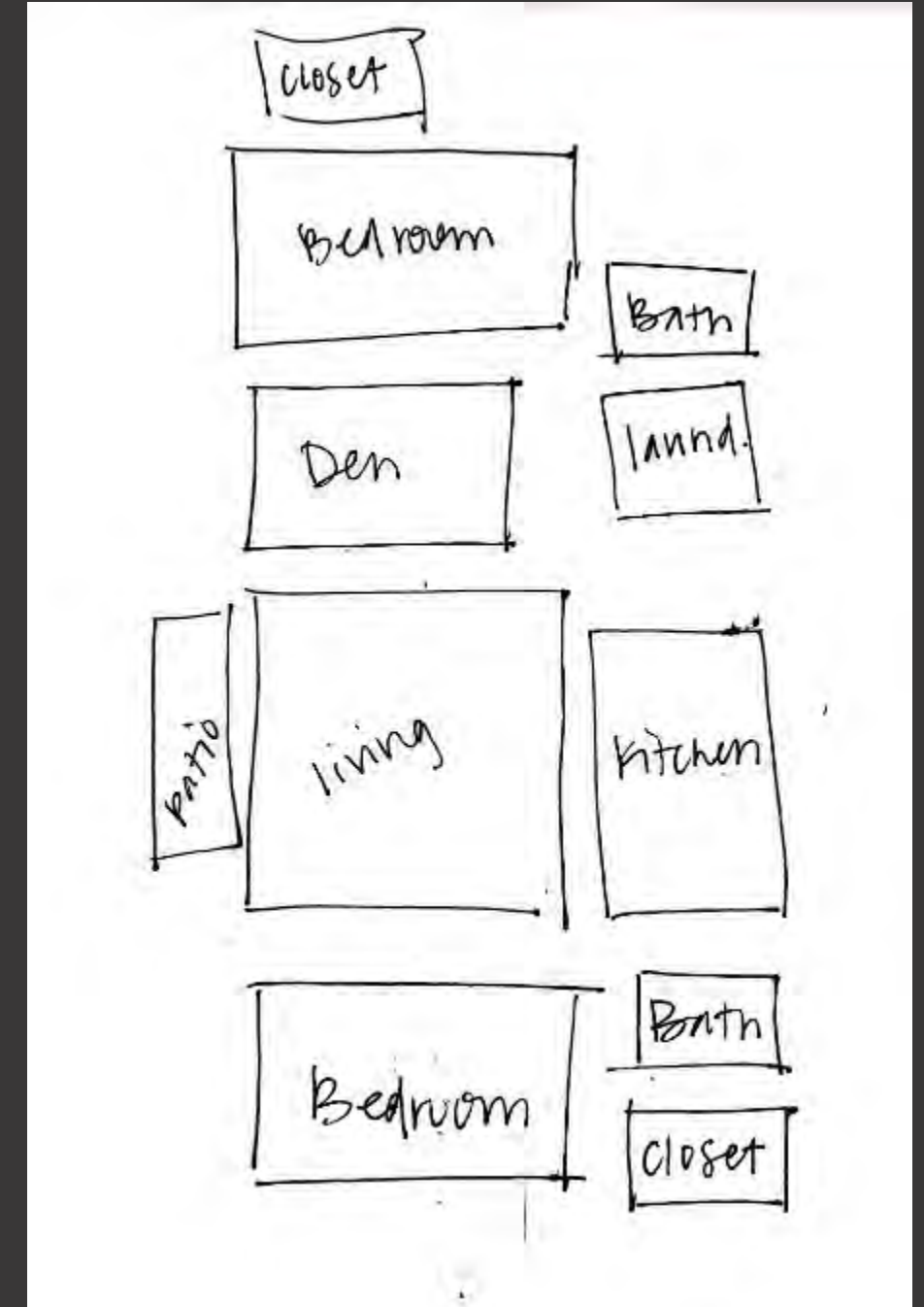
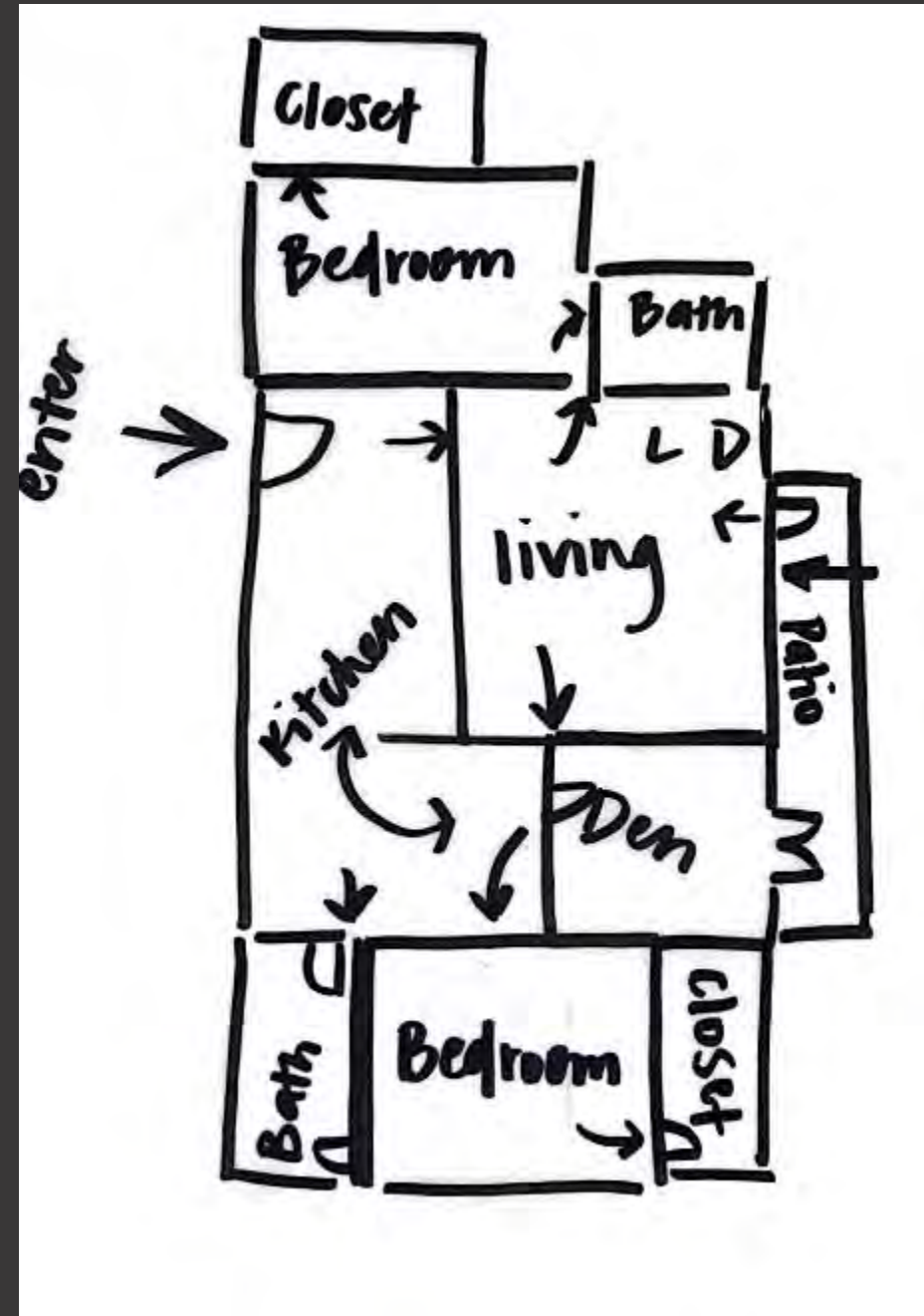
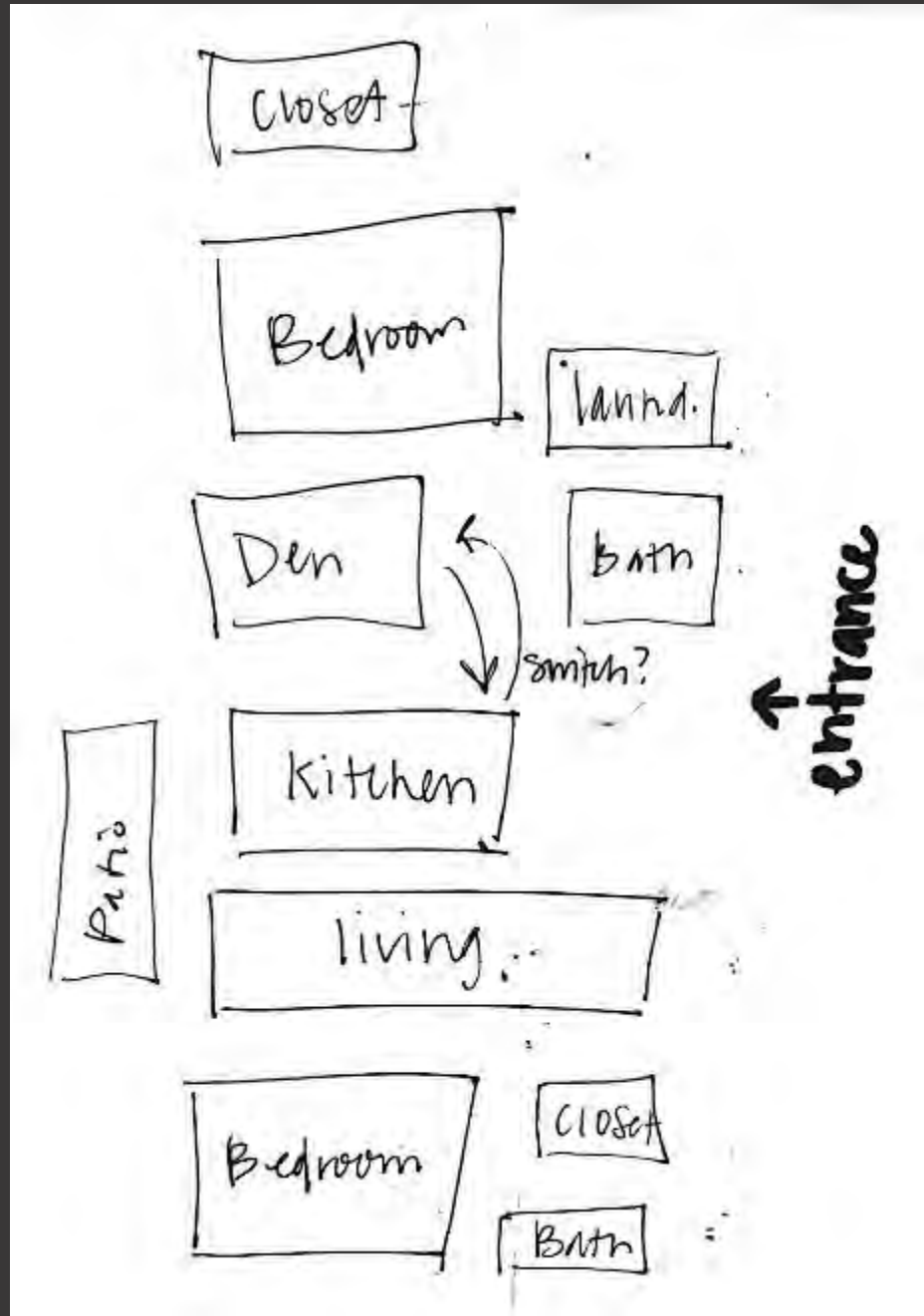
Julien Wohlgemuth

IDSN 3102- Fall 2019 Studio

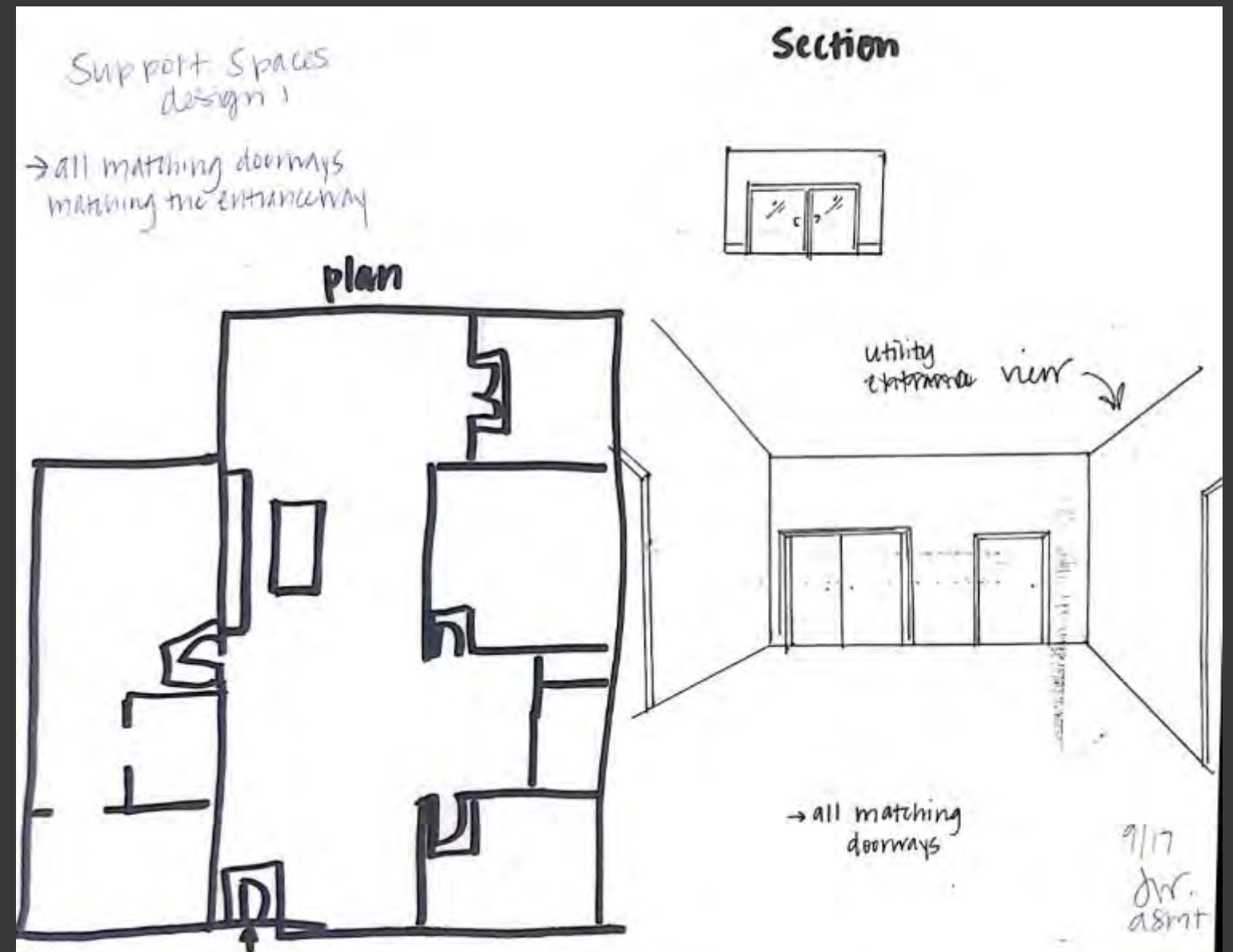
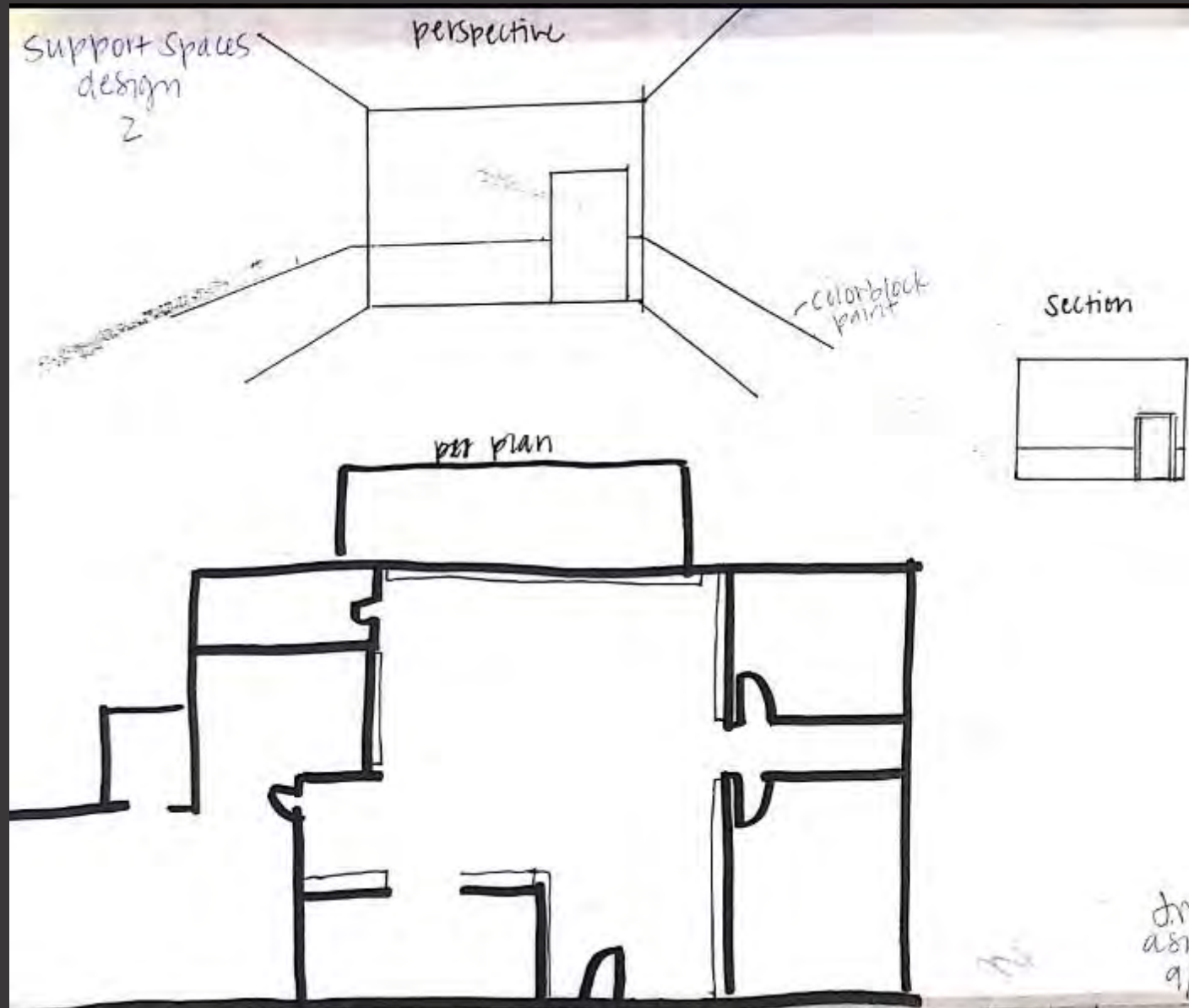
Portfolio 2



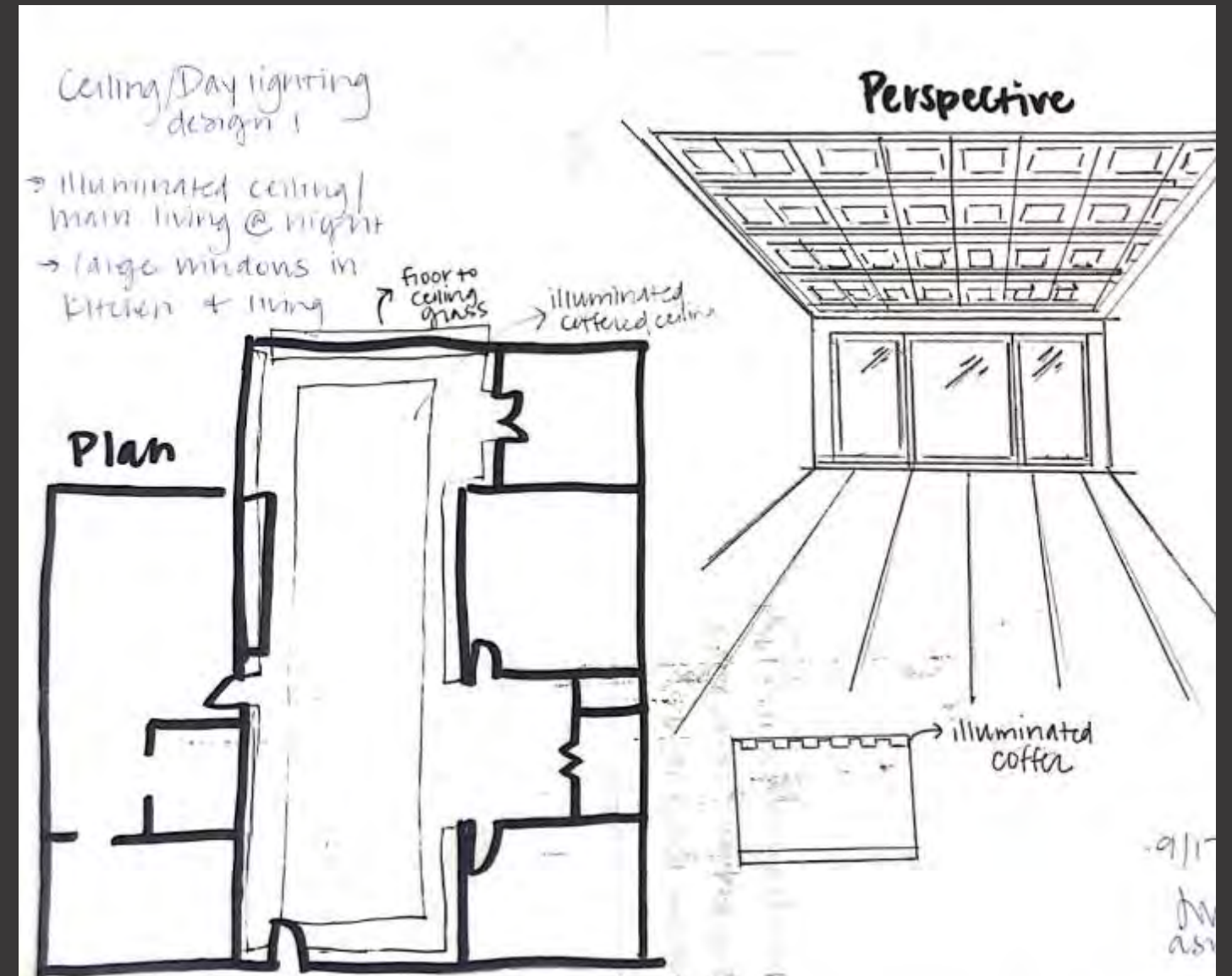
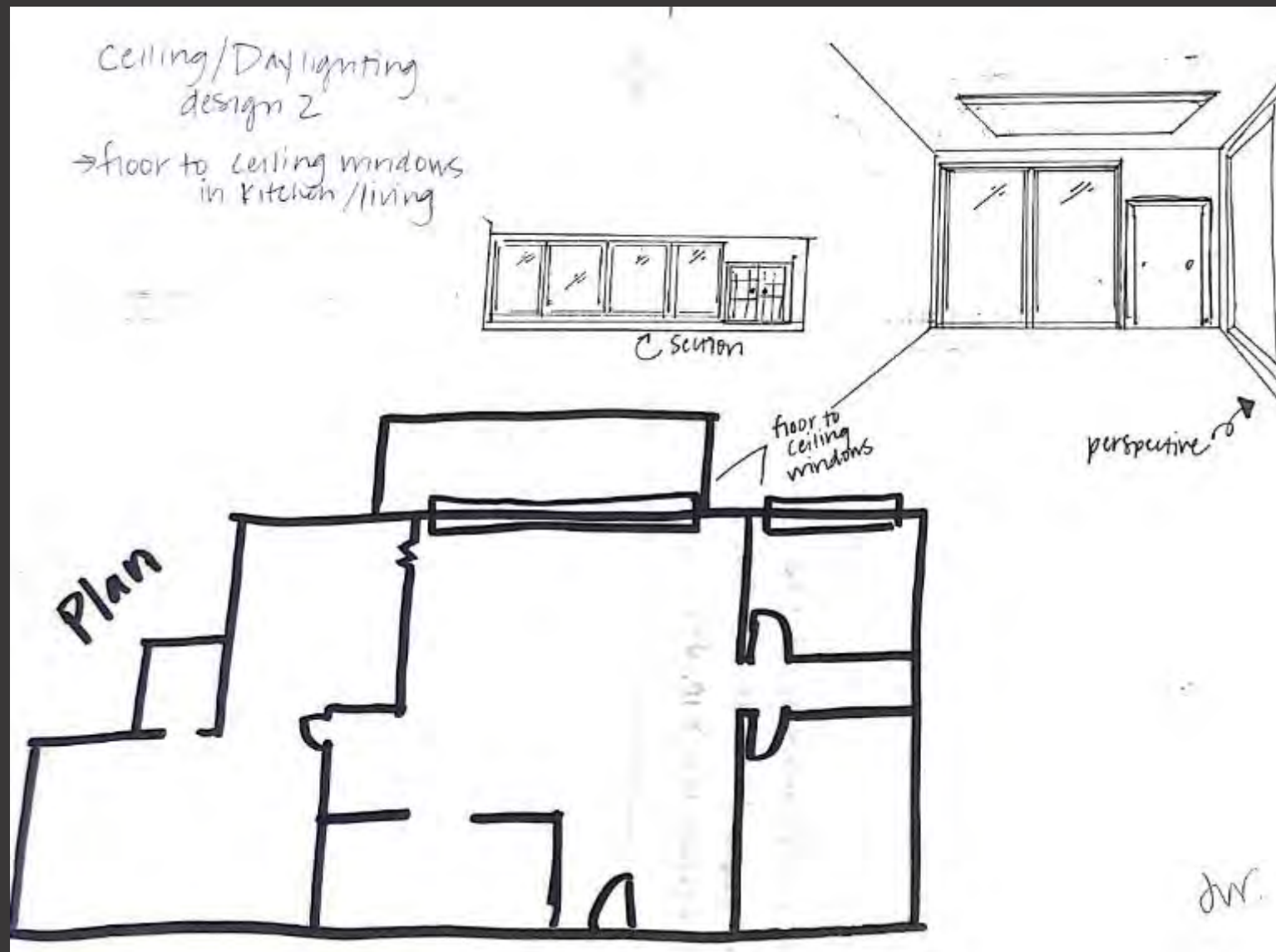
Space Planning



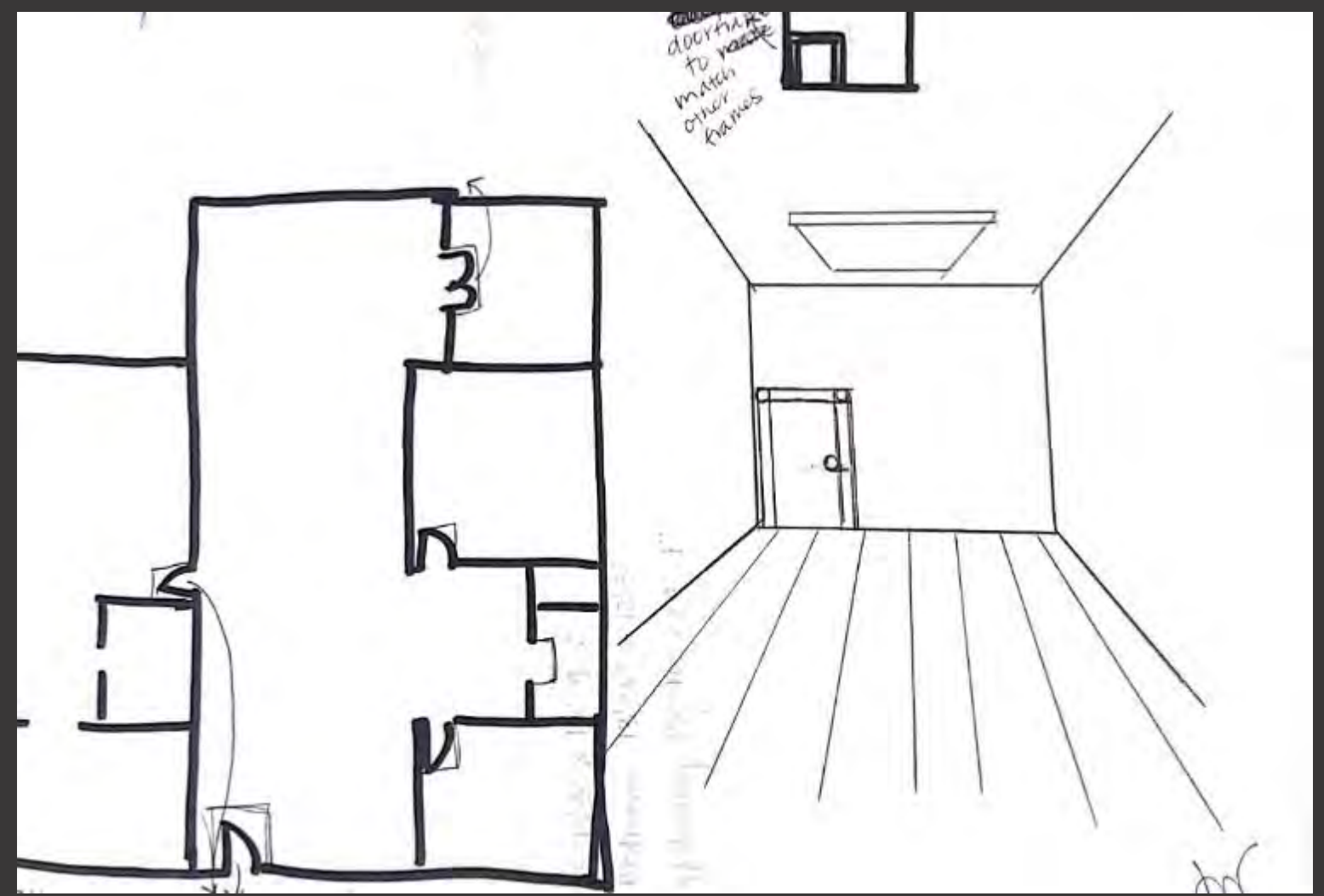
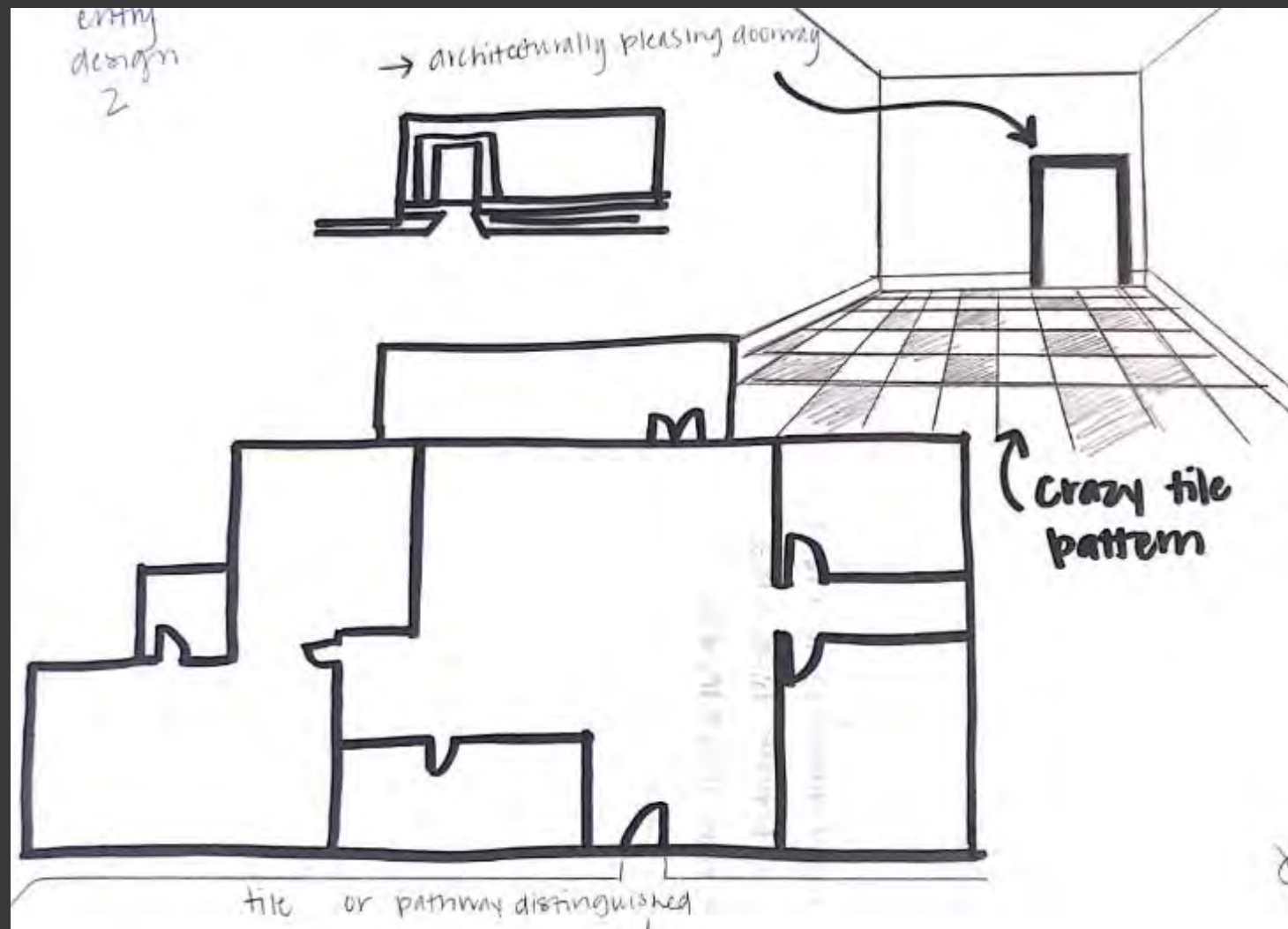
Solution Sketches



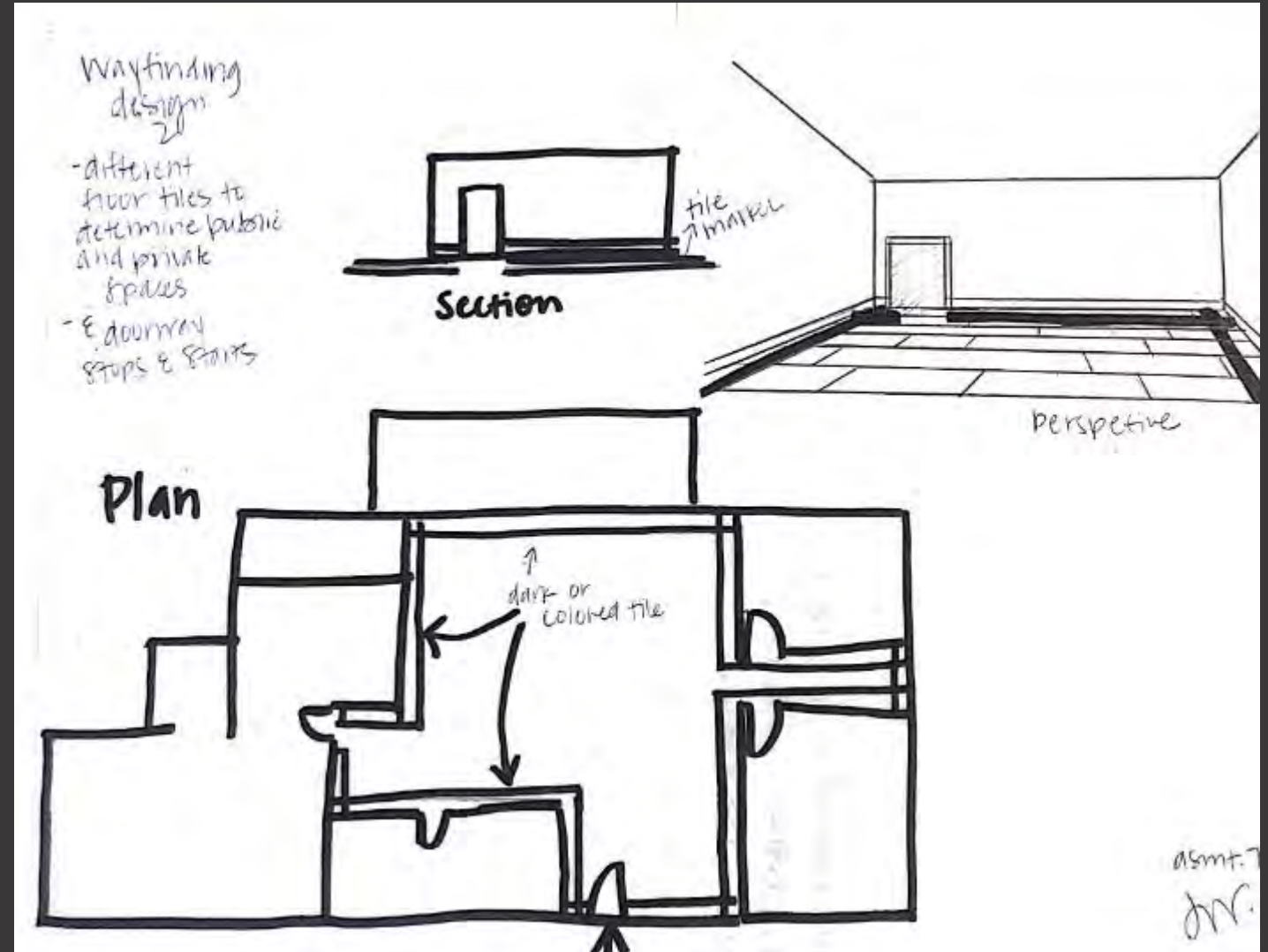
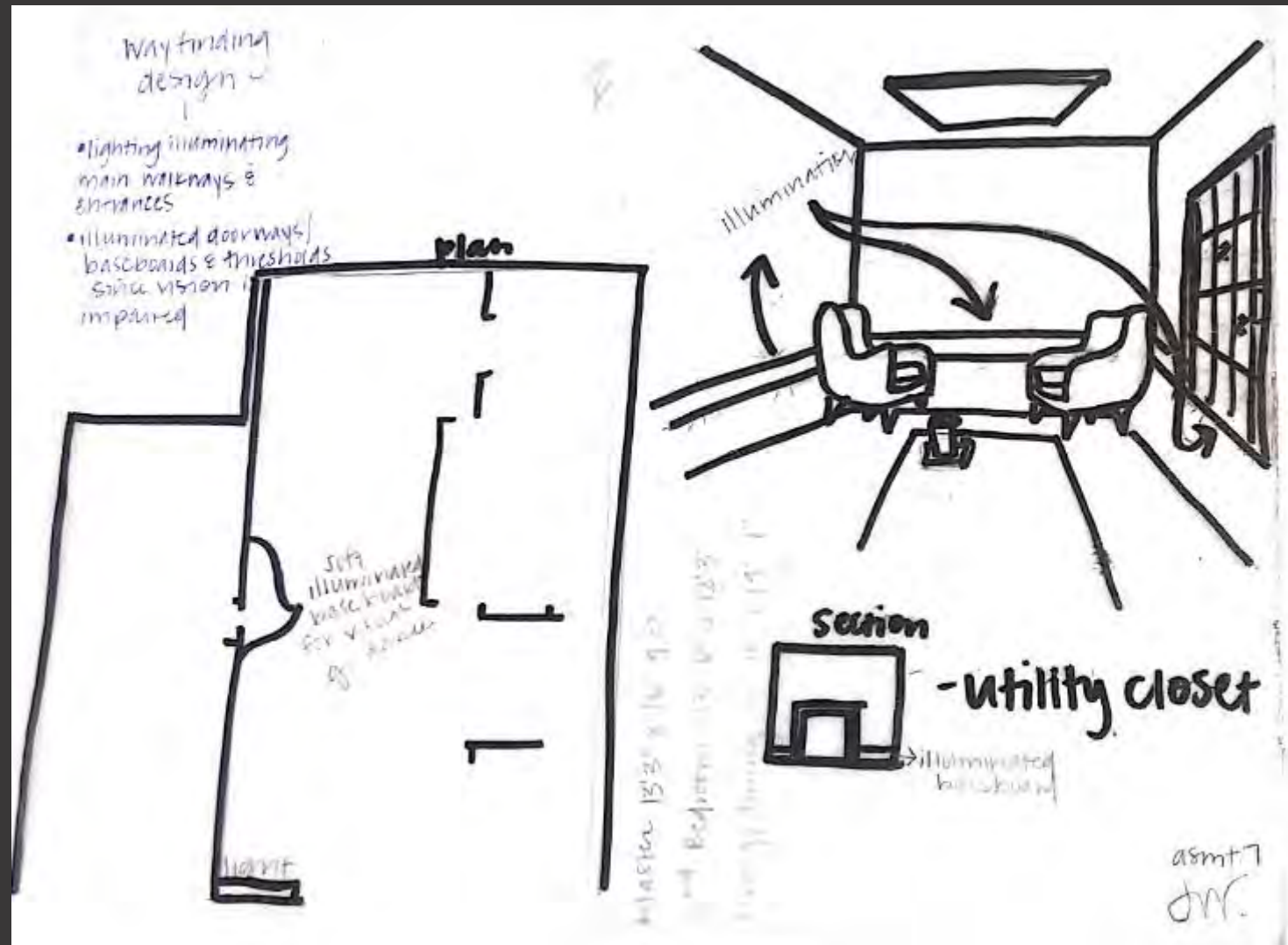
Solution Sketches

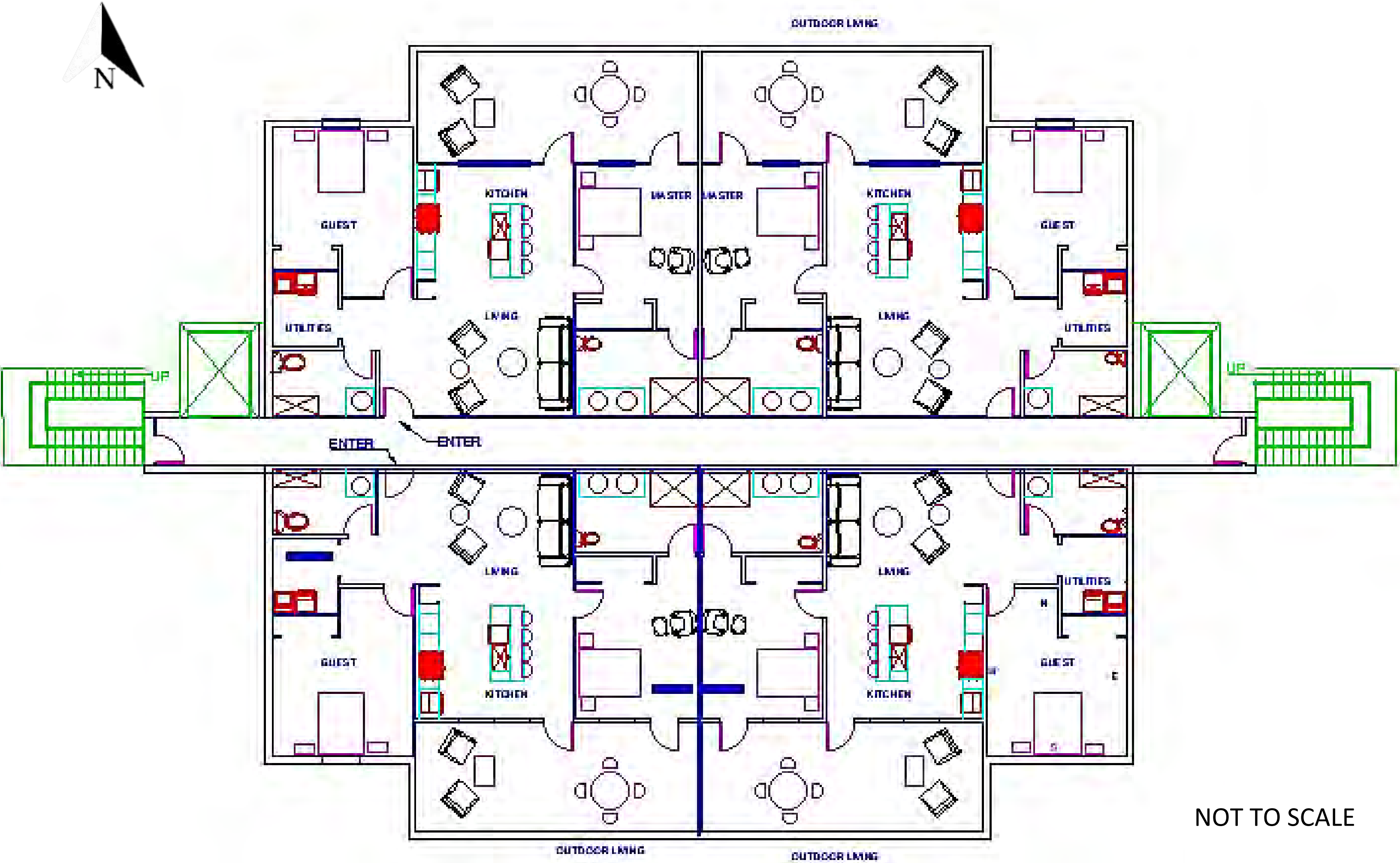


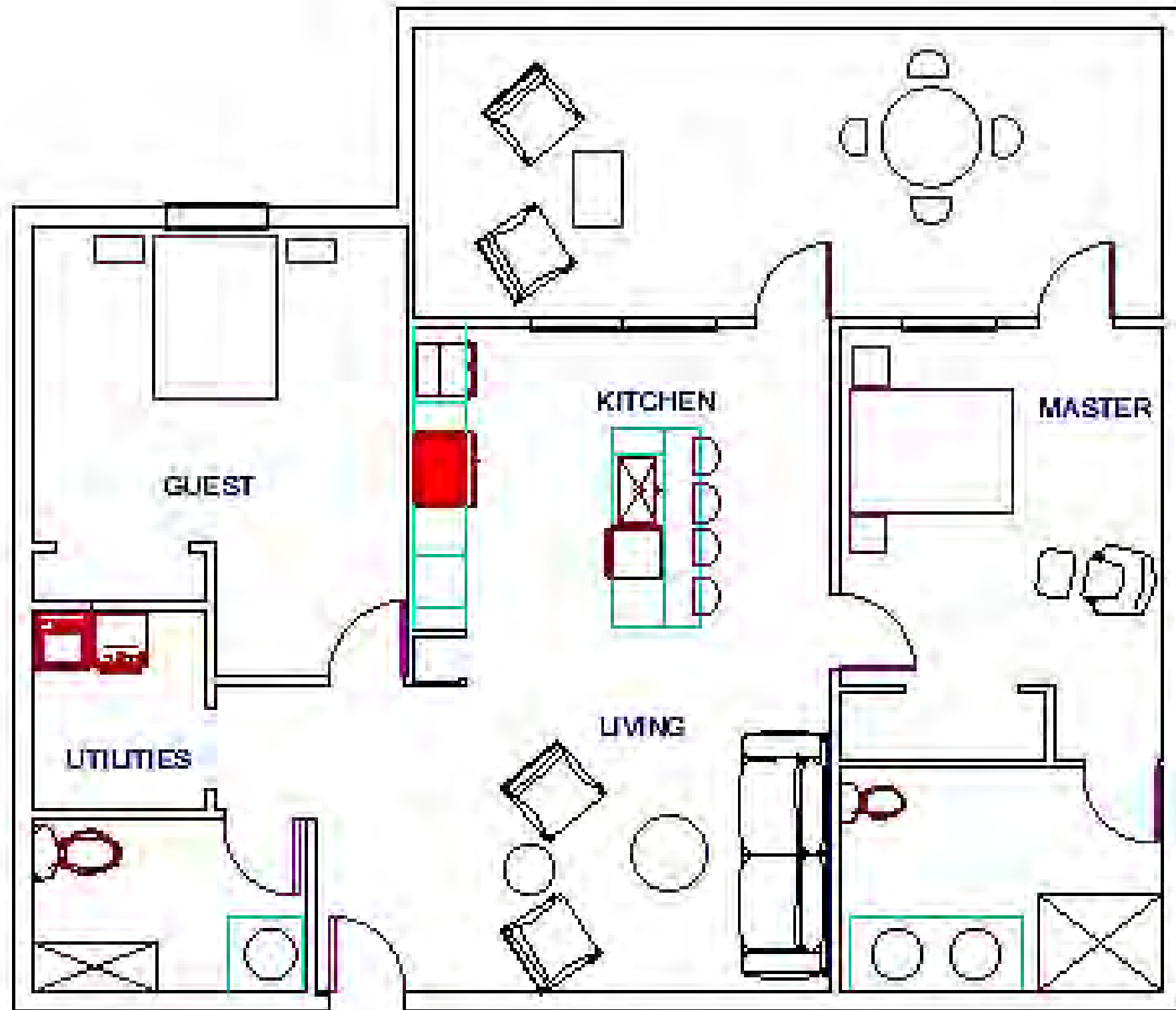
Solution Sketches



Solution Sketches

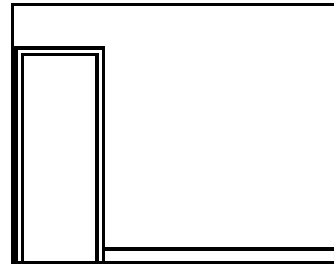




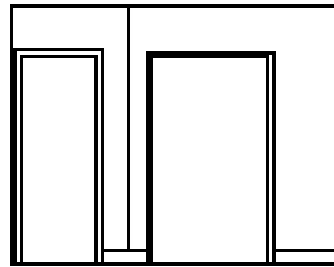




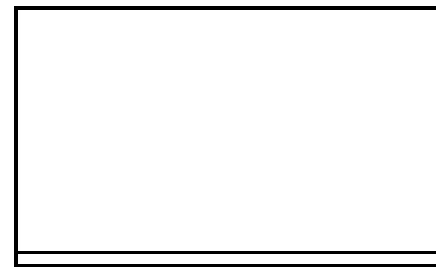
MASTER W



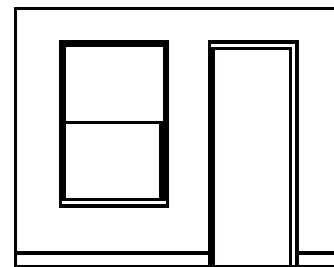
MASTER S



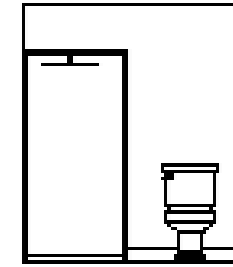
MASTER E



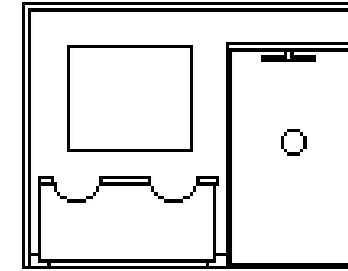
MASTER N



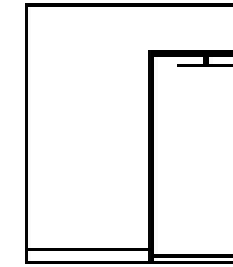
MASTER BATH W



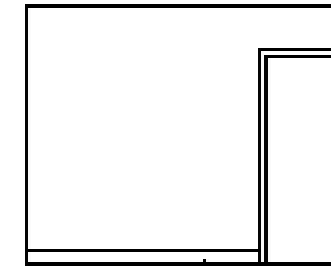
MASTER BATH S



MASTER BATH E

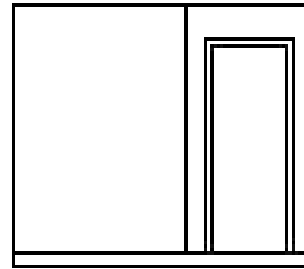


MASTER BATH N

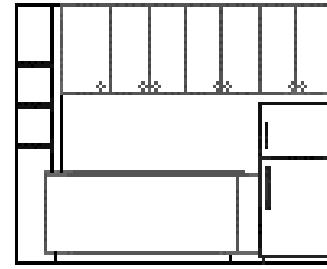




LIVING W



KITCHEN W



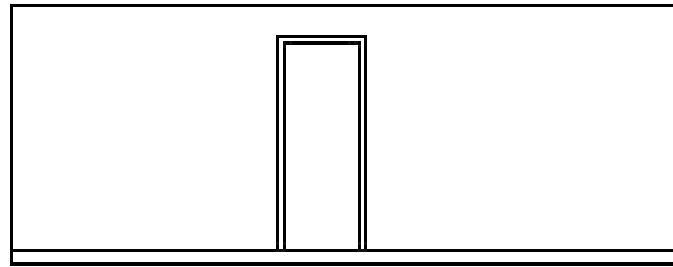
LIVING S



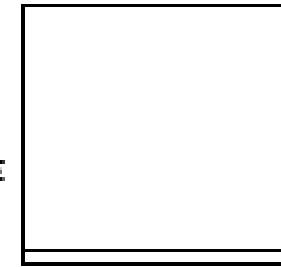
KITCHEN S



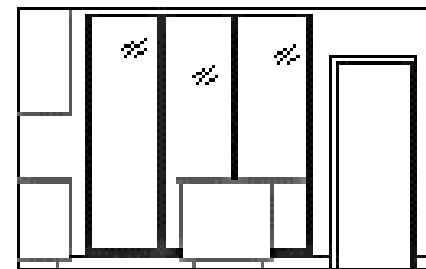
LIVING E



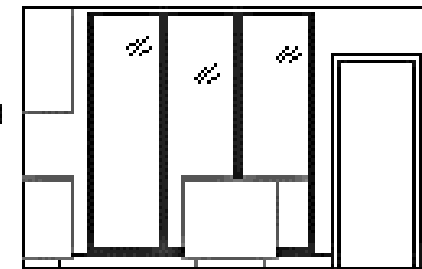
KITCHEN E



LIVING N



KITCHEN N



Reflected Ceiling Plan

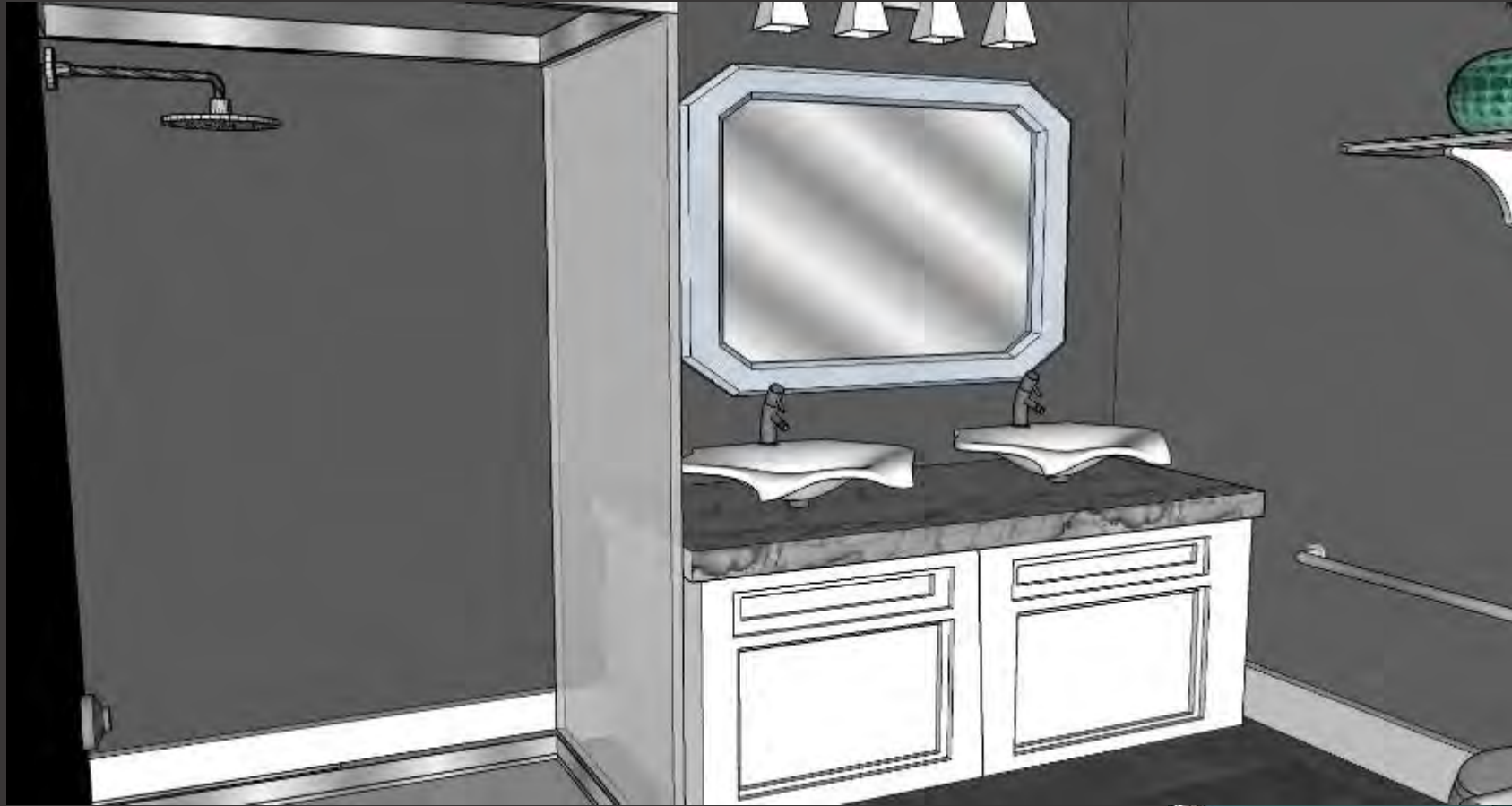


Sketchup Model

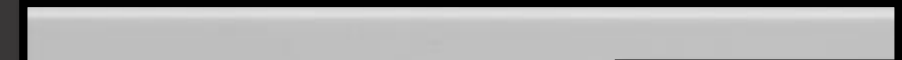
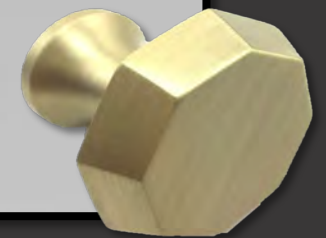
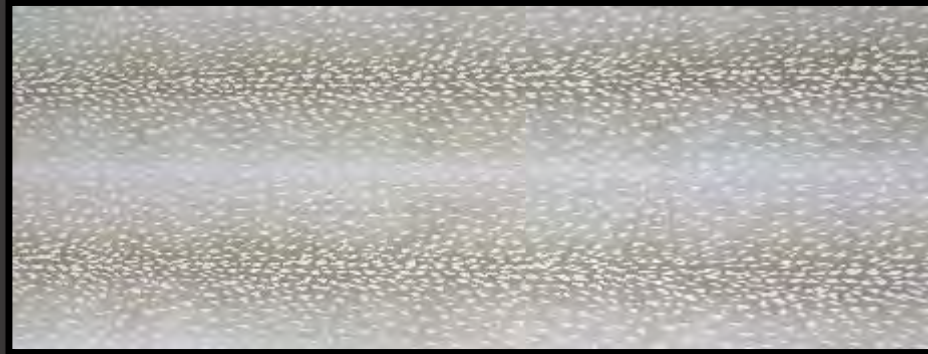
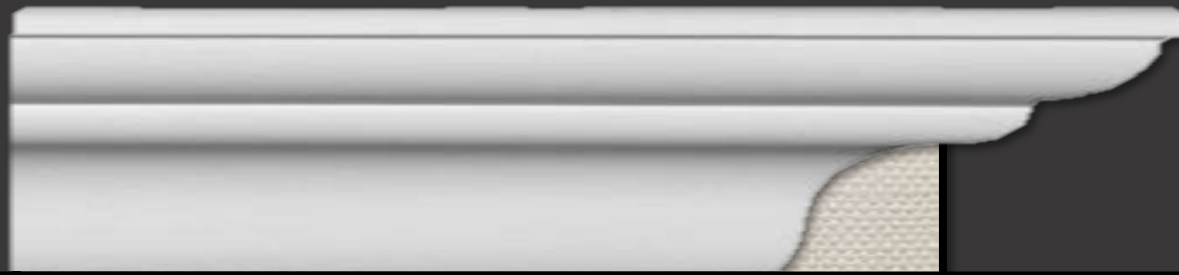








Living Area Finishes



Bathroom Finishes



Bedroom Finishes



Kitchen Finishes

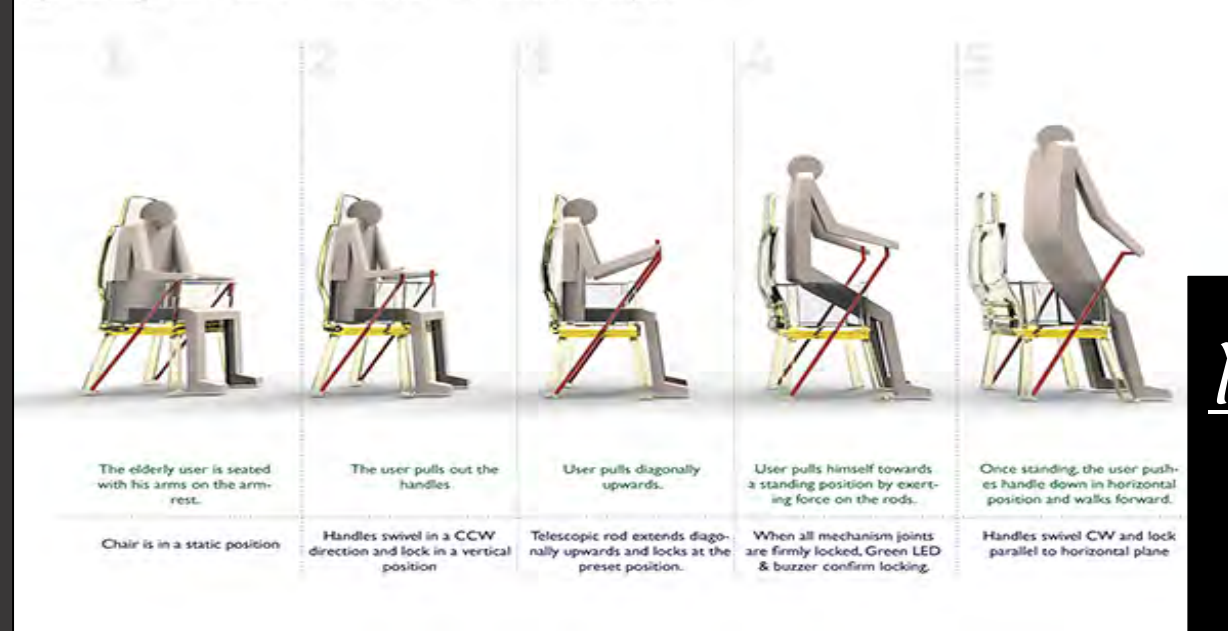


Accessibility

- Ergonomic furniture-shallower seating, reclining chairs, lift chairs, elevation pillows
- Round tables- no sharp corners
- Clutter free walkways and living spaces



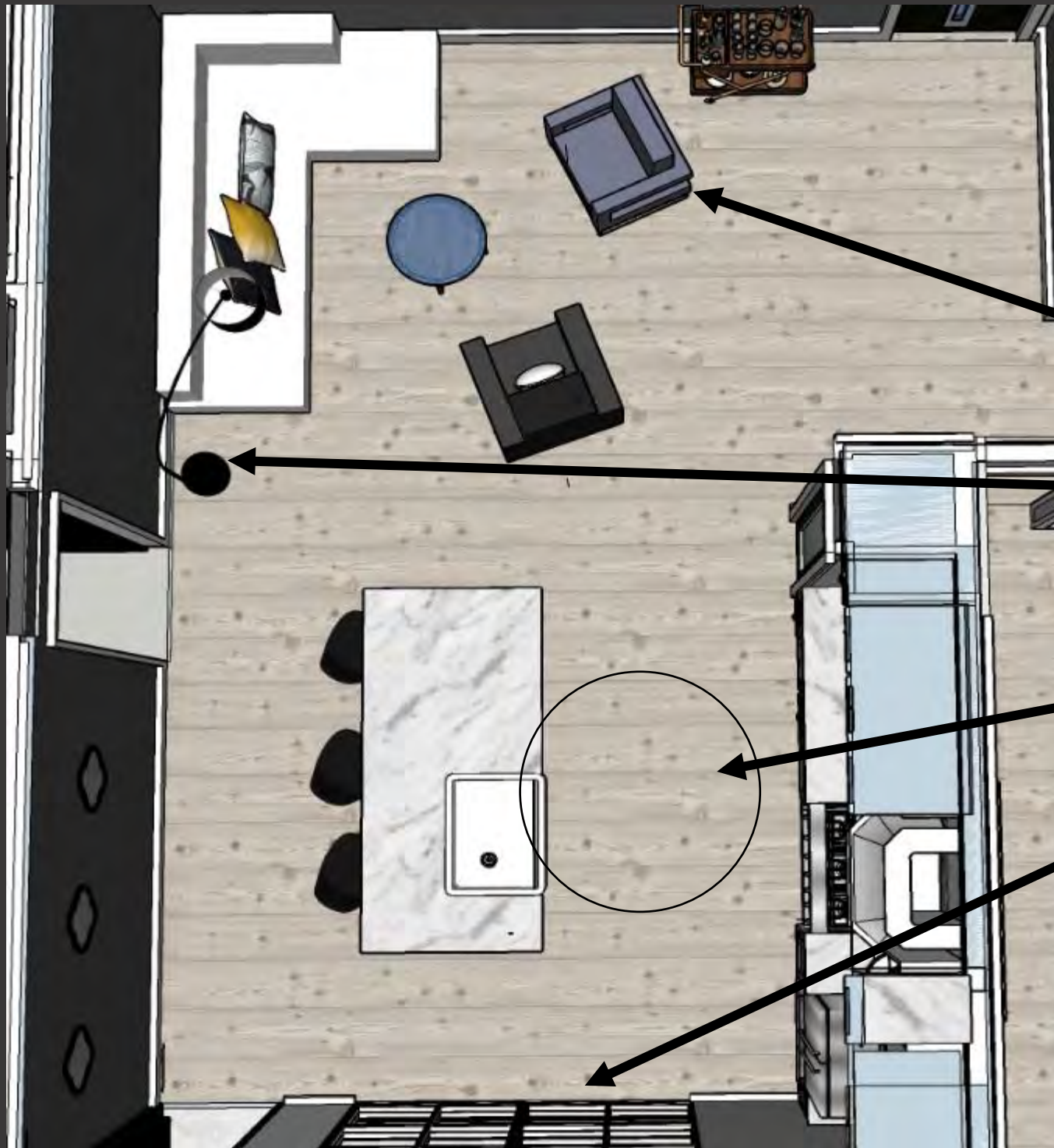
Egress/Ingress Assist Mechanism : Motion Analysis



Mission

- Integrate public and private spaces
- Maximize easy access + comfort
- Create independent feel

Main Living

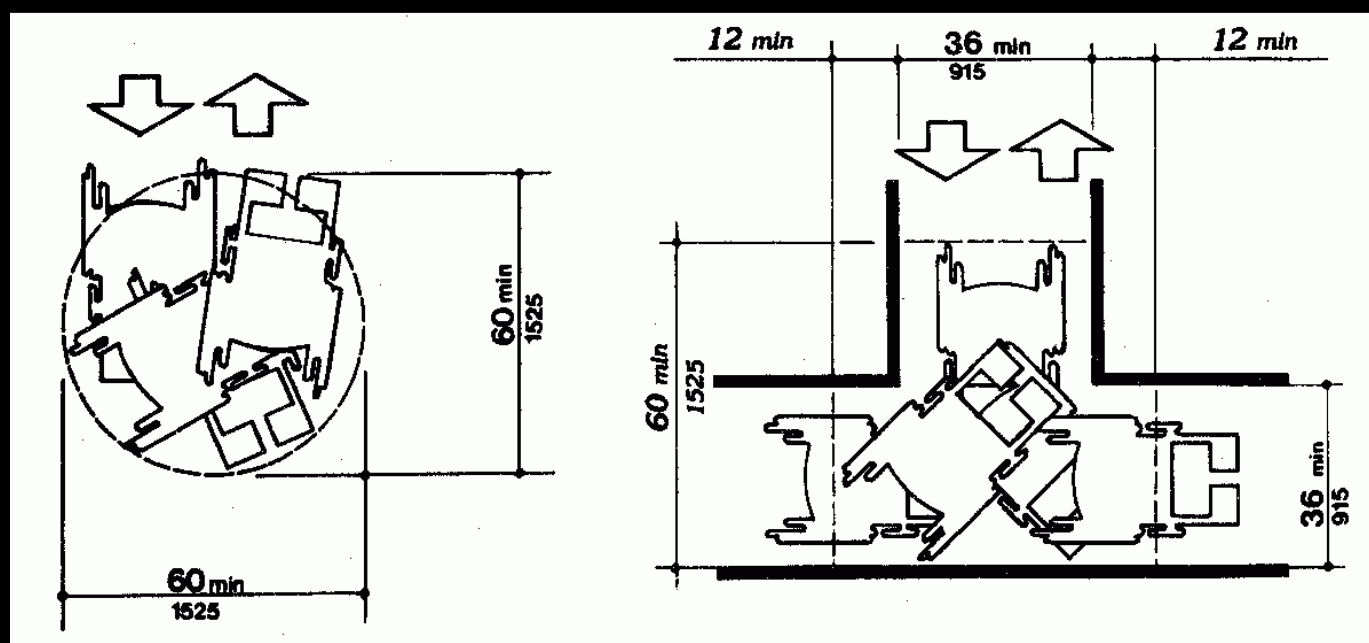
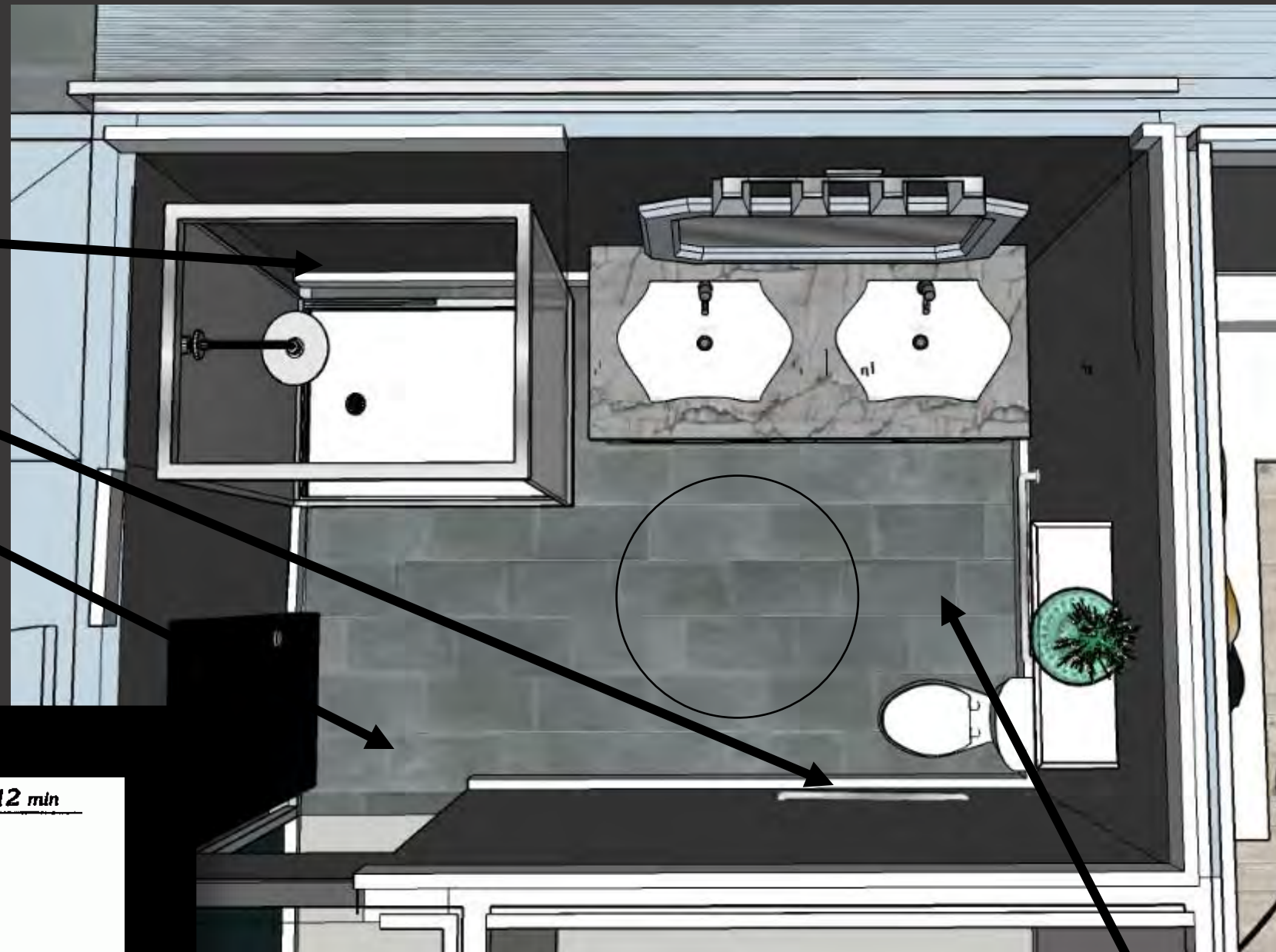


Where Flow Meets

- Stable arm seating
- Floor lamps- easily turned off by stepping onto it
- 5' isle ways
- Mixed artificial and natural lighting to assist activities of daily living

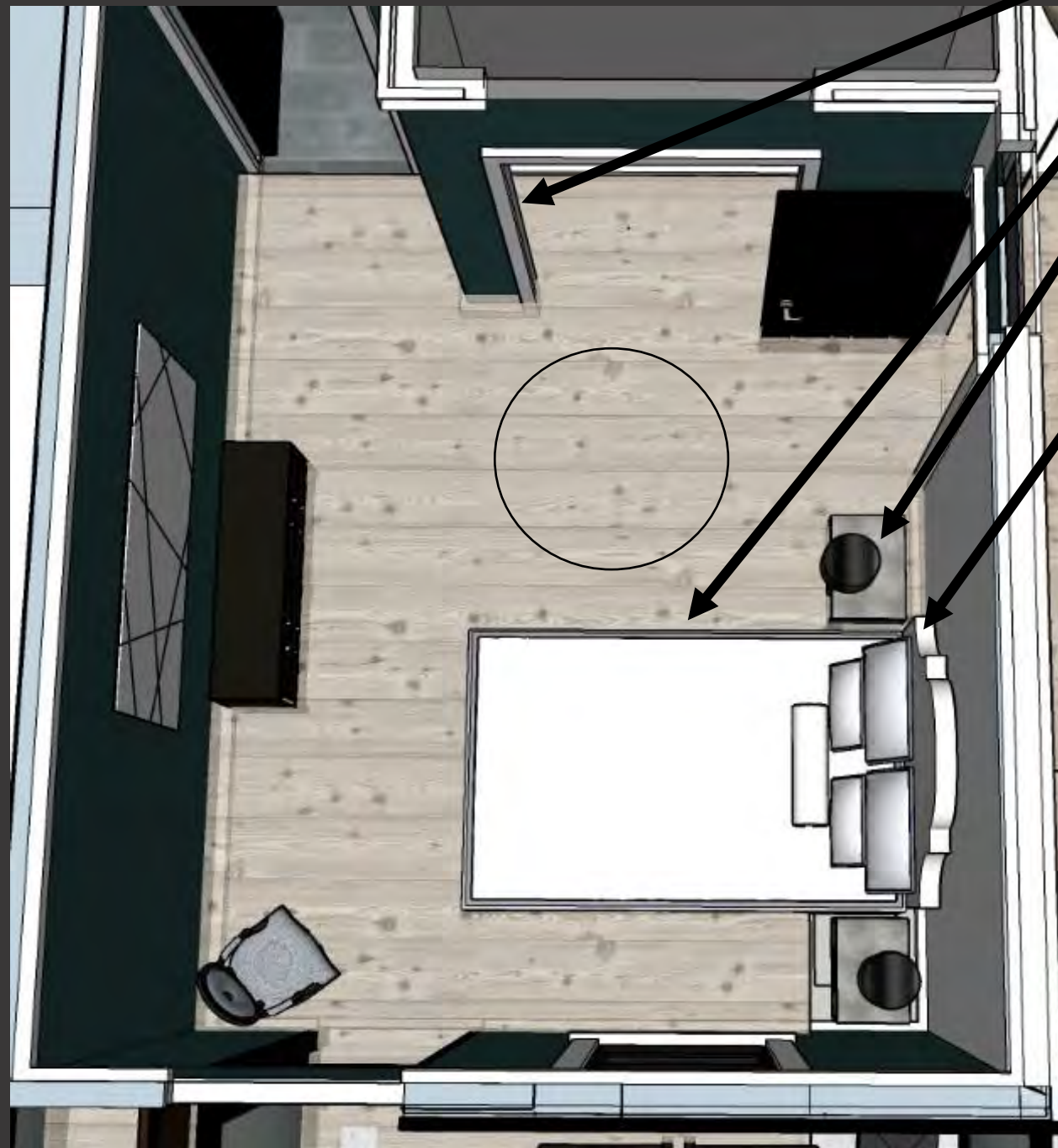
Bathroom

- Grab bars located in shower and toilet area
- No threshold shower
- 18" Clear on pull side of
- Removable center drawer for wheelchair access to sinks



- 5' Wheelchair turn radius
- Comfort height toilet
- Space next to toilet for wheelchair

Master

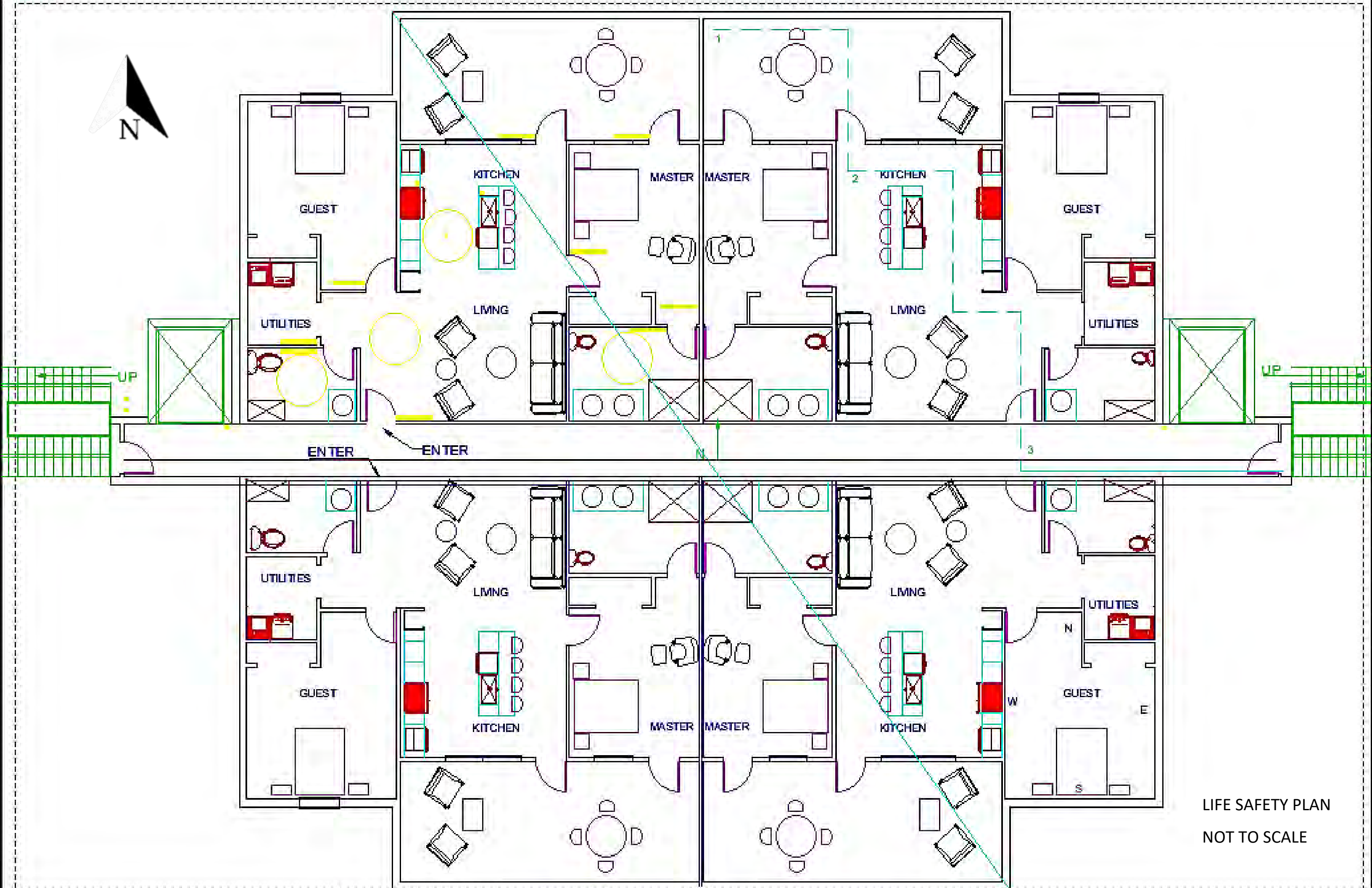


- Bi-Fold closet doors
- Adjustable beds
- Higher Side tables- ensures easy access while laying down
- Upholstered surfaces



Functional Meets Feel Good: Material spotlight

- Chemical & Vapor free fabrics; reduce health risks
- Weight & Temperature activated fabric; breathable
- Slip, wear, & water resistant; ensuring no injury can occur
 - Little clean up
- Neutral colors; easy on the aging eye



LIFE SAFETY PLAN
NOT TO SCALE

Life Safety Plan Legend

LEGEND

FE -FIRE EXTINGUISHER MOUNTED WITHIN CABINET LEFT OF RANGE AND RIGHT OF DISHWASHER

-OCCUPANCY LOAD $1,702 \text{ SF}/200 = 9$

DISTANCE BETWEEN EXIT ACCESS DOOR- 49'(Measured diagonally from furthest point to main entry door)

EXIT ACCESS TRAVEL DISTANCE-98'

CORRIDOR WIDTH-115'

DOOR WIDTH- 3'

DOOR SWINGS- 4'

NET SQUARE FOOTAGE OF SCOPE OF WORK (EXIT ACCESS, 1,2,3)- 1,321 NET SF

DISTANCE OF SCOPE OF WORK DIAGONAL IN SPRINKLERED AREA- $108\frac{1}{3} = 36$

SP SAND PIPE

FC FIRE CLOSET

Life Safety Plan Chart

A	B	C	D	E	F	G	H	I	J	K	L	M		
Building Construction and Occupancy														
Construction Type		Sprinklers?		Occupancy Type										
Type II		Yes		R2										
Exit Requirements: Number and Arrangement of Exits														
Space Designation	# of Exits			Travel Distance			Arrangement: Means of Egress							
	Required		Shown on Plans	Allowable Distance		Actual Distance Shown on Plans	Req'd Distance Between Exits			Actual Distance Shown on Plans				
Ap. 101	2		2	250'		97'	35			115'				
Notes:														
Use Group or Space Designation	(A)		(B)					©		Exit Width (Inches)				
	Area = Sq. Ft.		Area per Occupant		Calculated Occupant Load =			Egress per Occupant		Required Width =		Actual Width		
					A/B			Stair	Level	(A/B)xC		Stair	Level	
Apt. 101	1,426'		200		7			0.3	0.2	2.1		1.4	3'	5'