



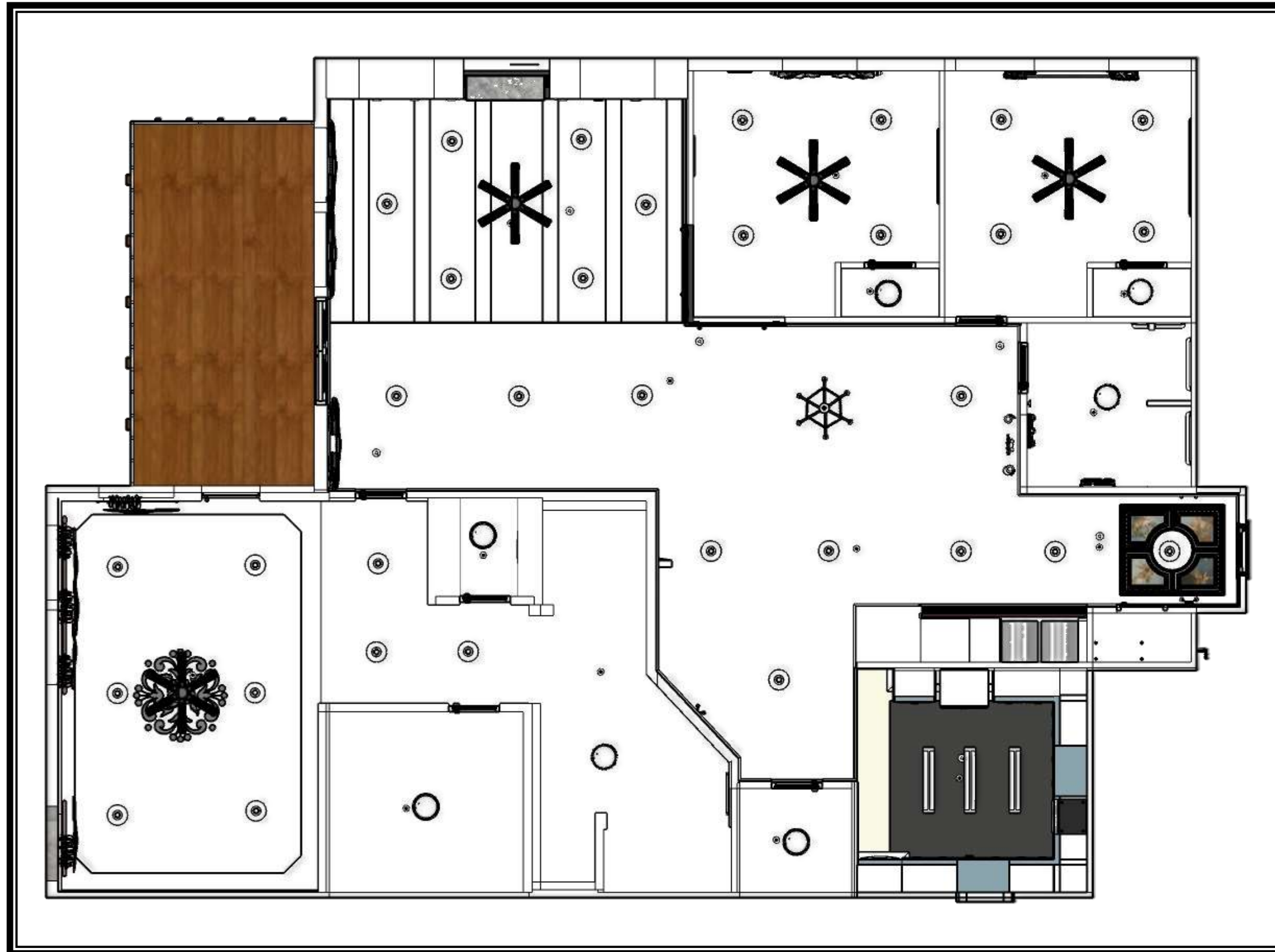
# *Portfolio III*

**Final Schematic Design  
IDSN 3102  
Fall 2019  
Amber Cousar**

# Furniture Plan

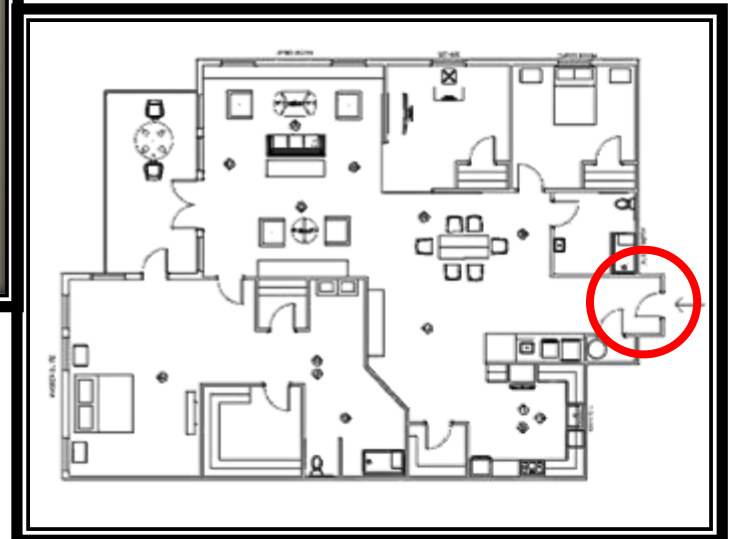


# Reflected Ceiling Plan

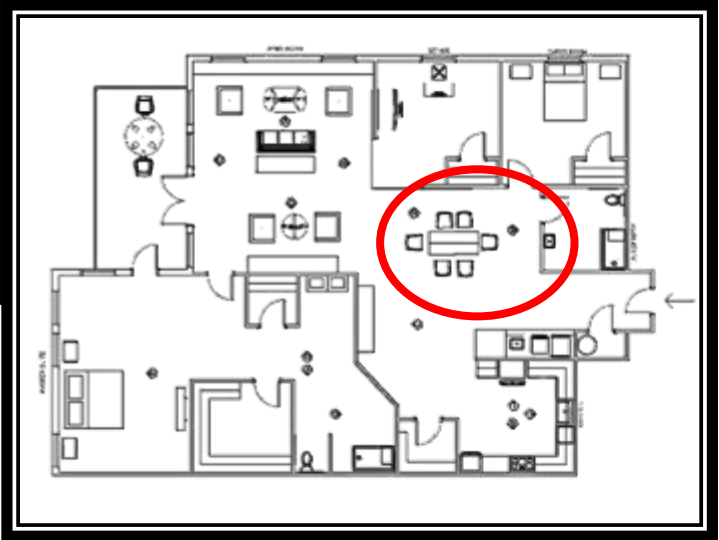




# Entry

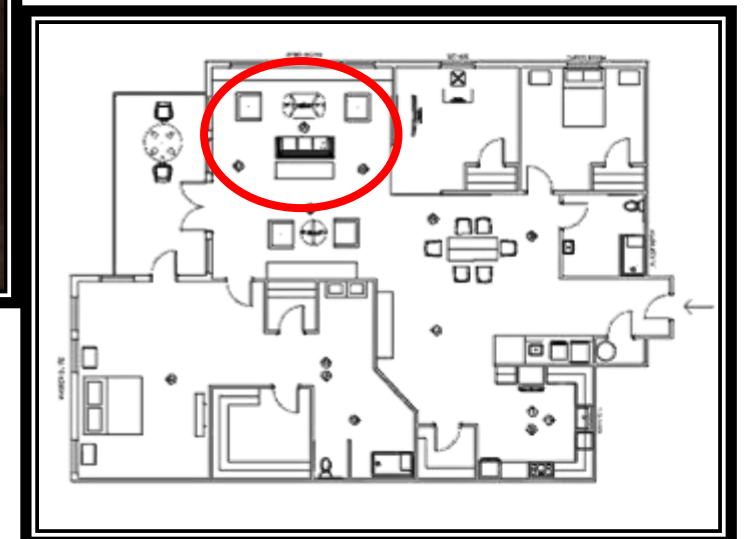


# Dining Room

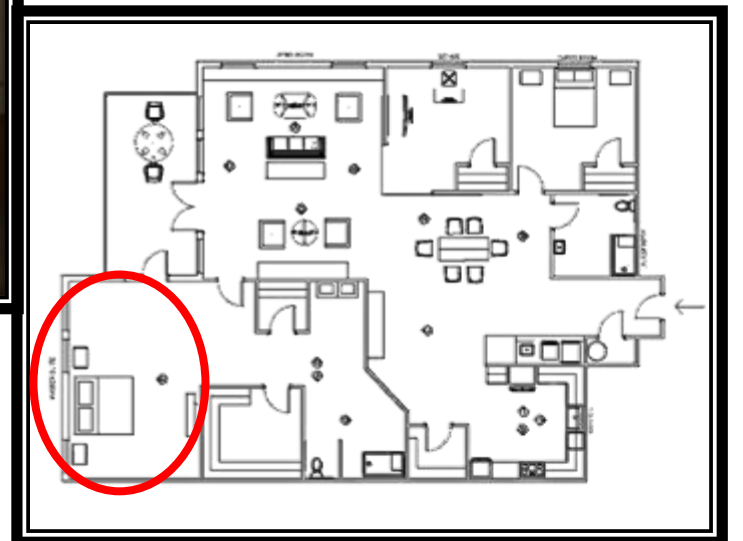




# Living Room

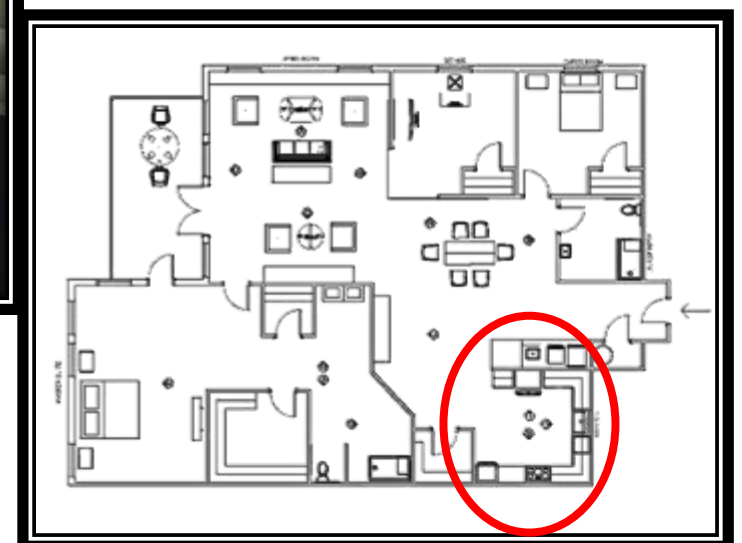


# Master Bedroom



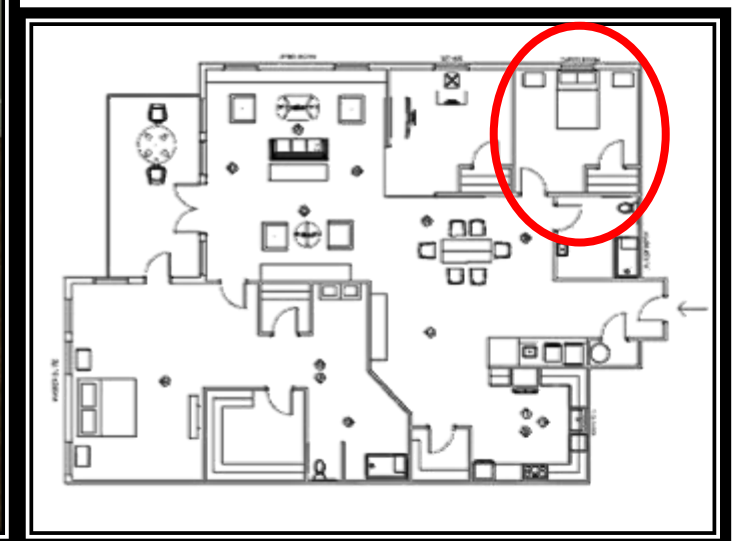


# Kitchen

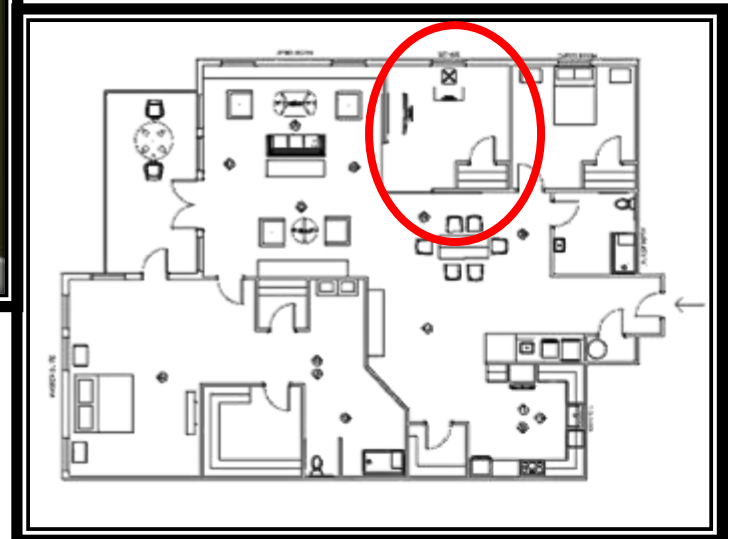




# Guest Bedroom



# Bonus Room





# Color Rationale

## Georgian Elegance



- ❖ Early Georgian colors were dramatic, like burgundy.
- ❖ Later colors were soft and muted.
- ❖ It was common for colors to be whitewashed, resulting in a very airy feeling.
- ❖ Muted greens, soft blues, yellows, browns and taupe were among the most common colors.
- ❖ Patterned wallpaper was another common occurrence.

# Entry / Dining Room



Option 1



Option 2





# Living Room



Option 1



Option 2





# Master Bedroom



Option 1



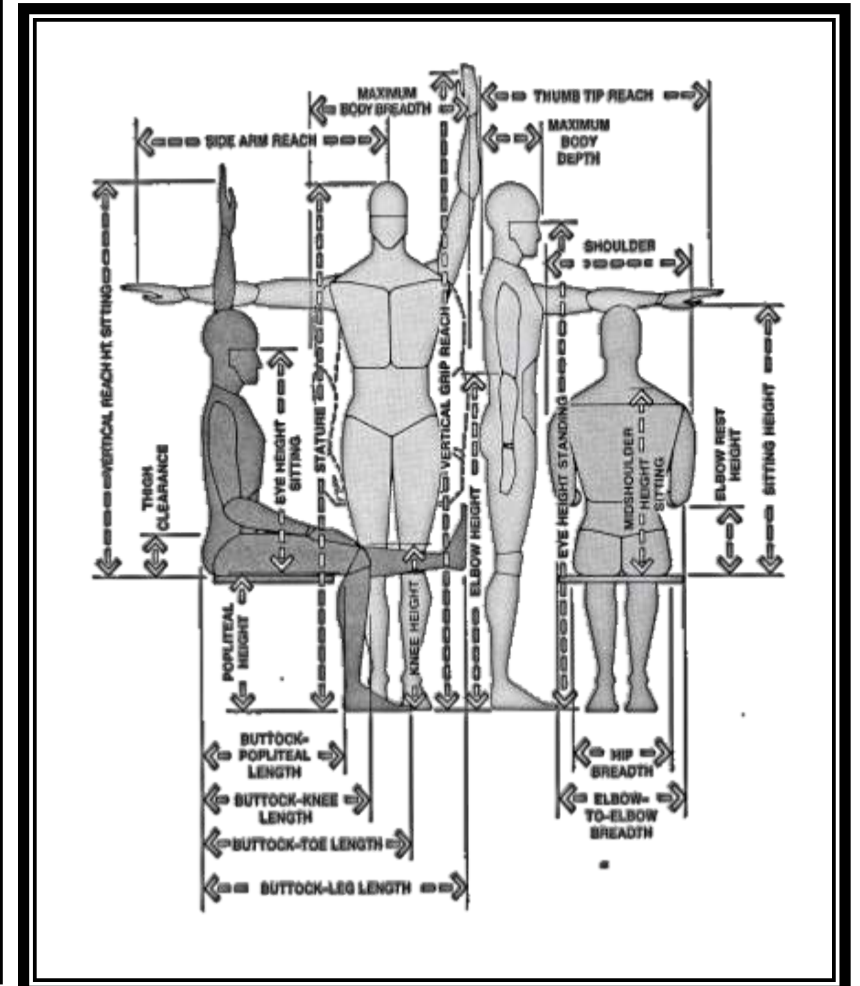
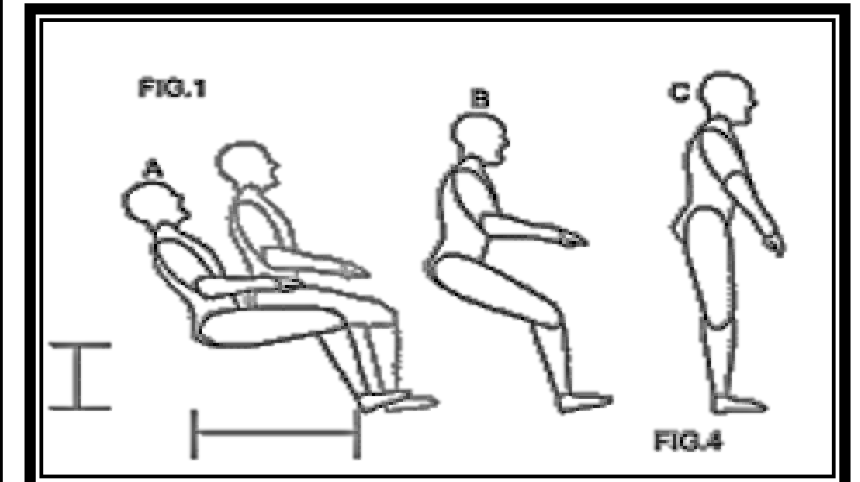
Option 2





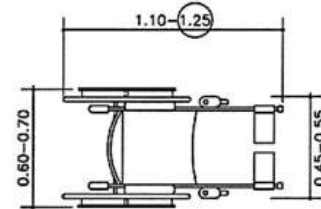
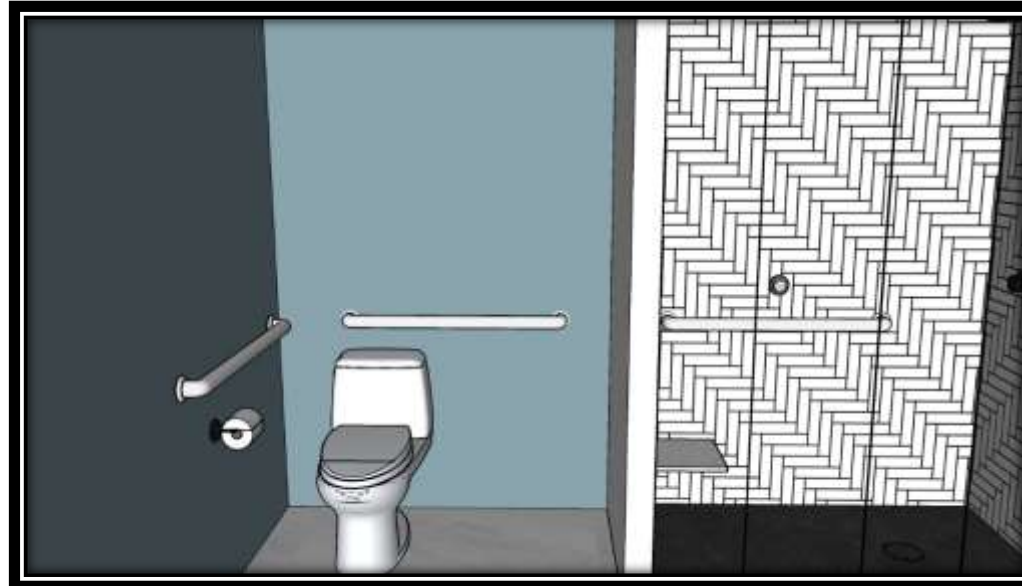
# Anthropometrics & Ergonomics

- **Equitable use:** The design is useful and marketable to people with diverse abilities.
- **Flexibility in use:** The design accommodates a wide range of individual preferences and abilities.
- **Simple and intuitive use:** Use of the design is easy to understand, regardless of the user's experience, knowledge, language skills, or current concentration level.
- **Perceptible information:** The design communicates necessary information effectively to the user, regardless of ambient conditions or the user's sensory abilities.
- **Tolerance for error:** The design minimizes hazards and the adverse consequences of accidental or unintended actions.
- **Low physical effort:** The design can be used efficiently and comfortably, and with a minimum of fatigue.
- **Size and space for approach and use:** Appropriate size and space is provided for approach, reach, manipulation, and use, regardless of the user's body size, posture, or mobility.



# Anthropometrics & Ergonomics

- Counter heights at 32" for easy wheelchair accessibility
- Top of gripping surfaces of handrails are 36"
- All alarms have lights
- Space on transfer side of toilets with grab bars for added support
- Space to roll underneath all sinks
- 60-inch turning radius in all rooms
- Area rug is fixed to the floor
- 18" seat heights with firm cushions for added comfort and support







<https://vimeo.com/user105425882/review/374734674/705a36f70f>