



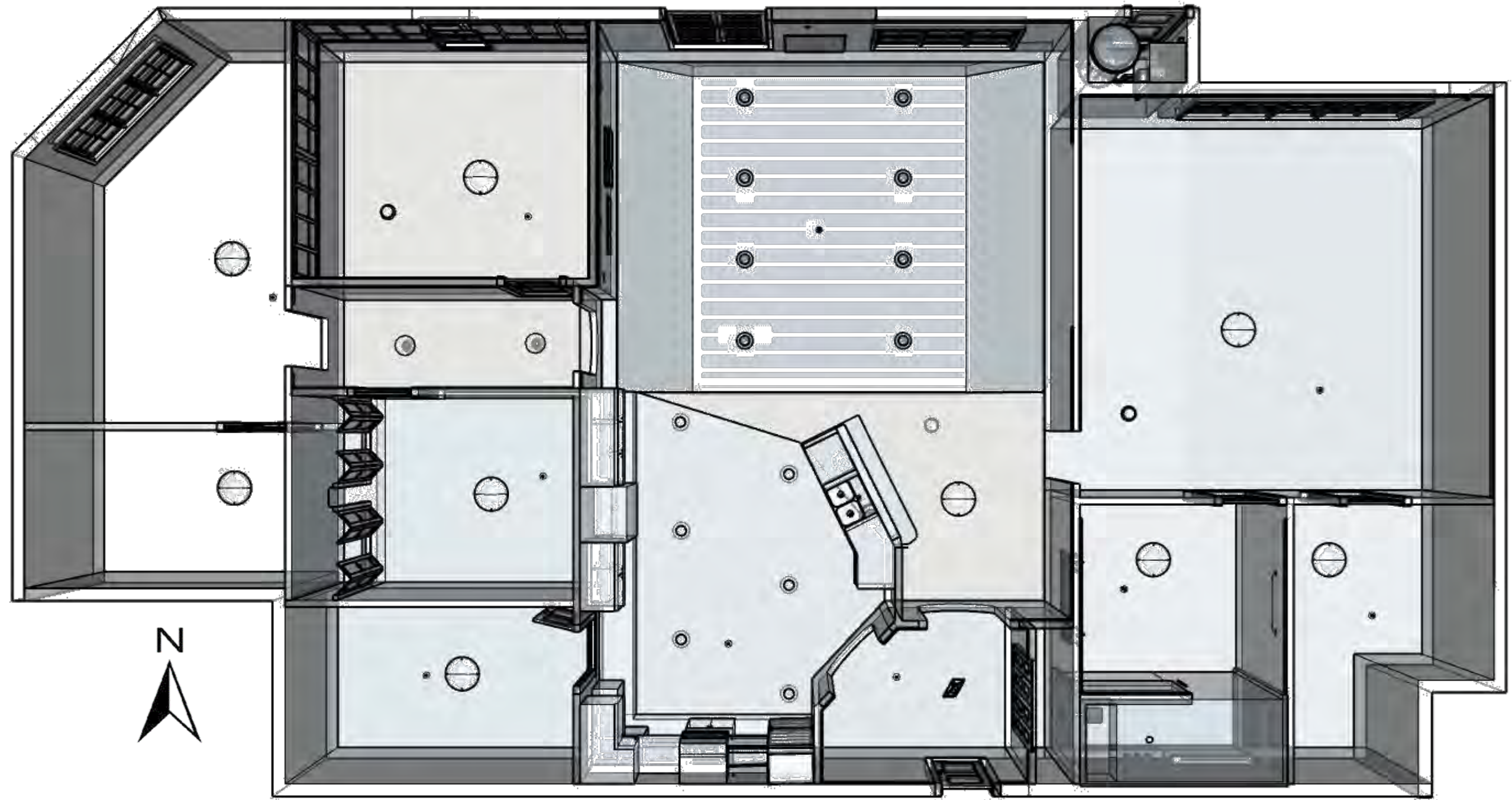
PORTFOLIO THREE
FINAL SCHEMATIC DESIGN

MARY ANN MALPAYA

CHARLES GUSTINA IDSN 3102 | FALL 2019

FURNITURE PLAN





REFLECTED CEILING PLAN

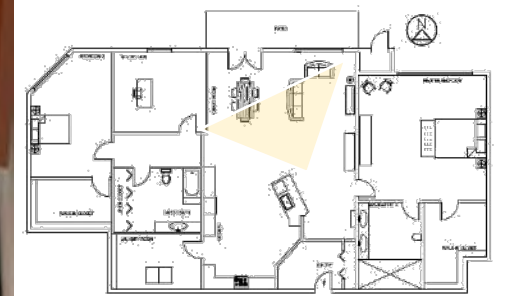
ROOM PERSPECTIVES



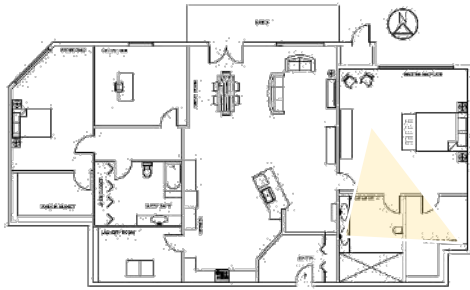
F O Y E R



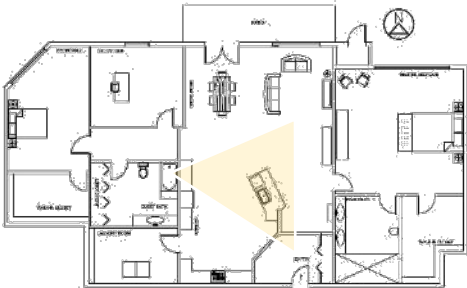
G R E A T R O O M



MASTER BEDROOM



KITCHEN



COLOR RATIONALE

- The color rationale is inspired by the "Wind in the Willows" book cover
- The combinations of reds, greens, blues, and neutral colors create a serene mood like having a picnic on a meadow or a riverbank
- Although the English Arts and Crafts style use a lot of dark wood finishes and colorful wallpaper, with the right color combinations, residents will feel at ease and even appreciate the simplicity and beauty the English Arts and Crafts age brought



FURNITURE & FINISHES

OPTION ONE



OPTION TWO

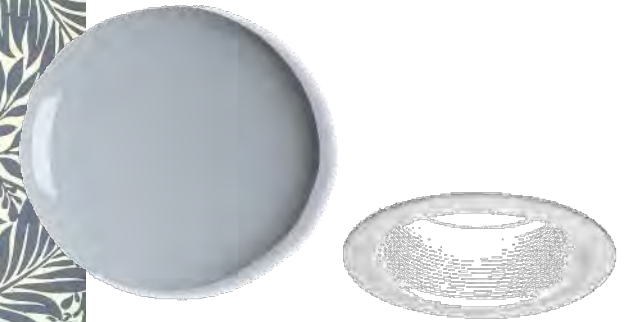
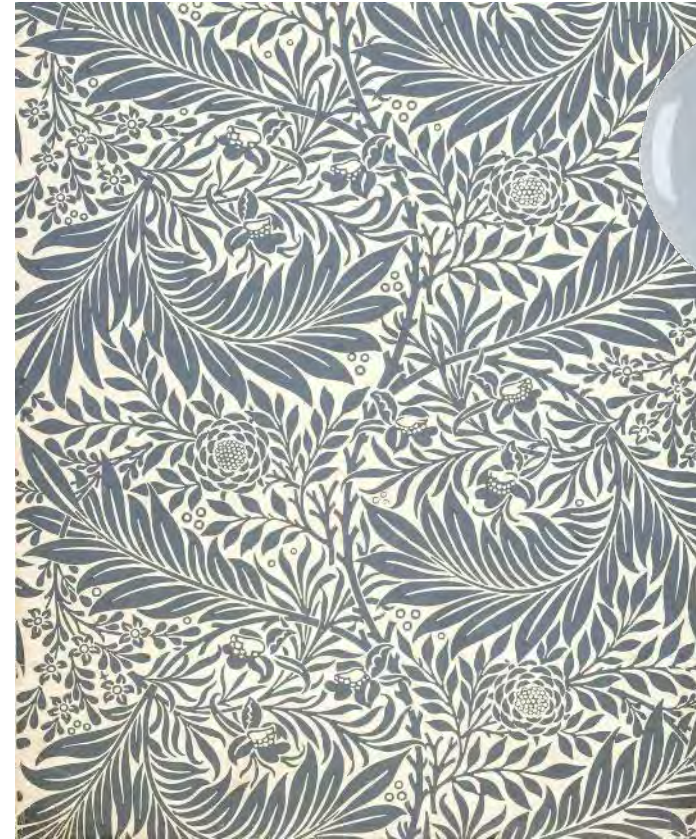


FOYER

OPTION ONE



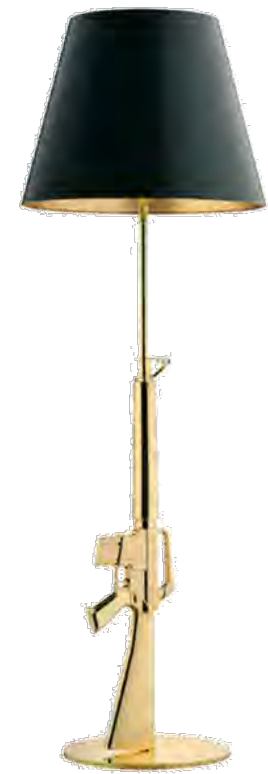
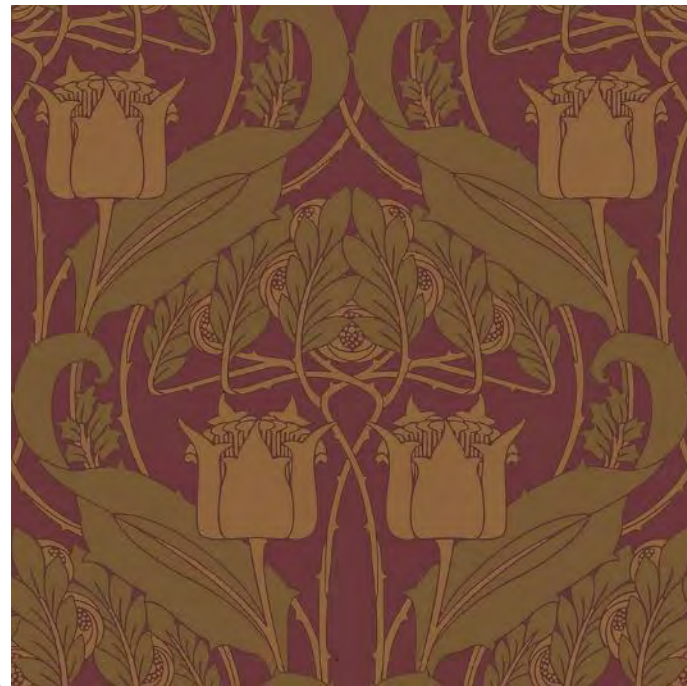
OPTION TWO



GREAT ROOM

OPTION ONE

OPTION TWO



MASTER BEDROOM

ANTHROPOMETRICS & ERGONOMICS

In designing this senior living condo space, anthropometrics have been used specifically in the dining area, living room, study, and bathrooms

DINING

- Table is 29 inches in height for leg room as well as a wheel chair clearance
- Chairs are 18" in height and have back curving shapes to give back a comfortable feel

LIVING ROOM

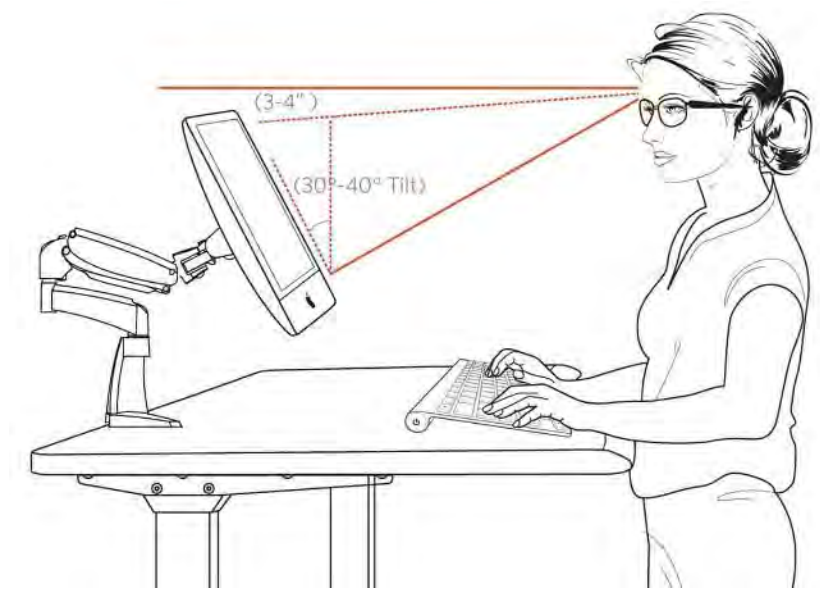
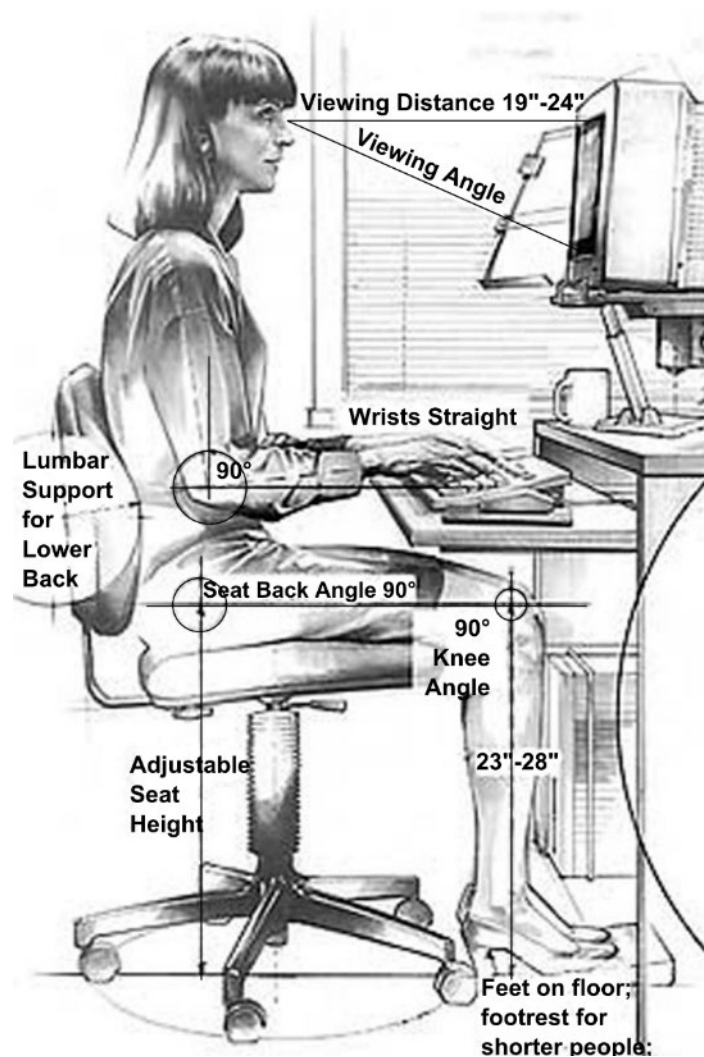
- The height of the sofas are between 13-15" for easy transfer for seniors and those with disabilities

STUDY

- The Desk and the office chair are designed to be the perfect height for easy an office work period

BATHROOMS

- Toilets and sinks are not way to low or way too high for people to reach
- The width for sink vanities is 29" for easy faucet reach



CHALLENGES

Locations of some appliances like the height of the washer and dryer and the oven could be a challenge for Pat and Fran as they begin to age and cannot easily bend down

WALKTHROUGH

