

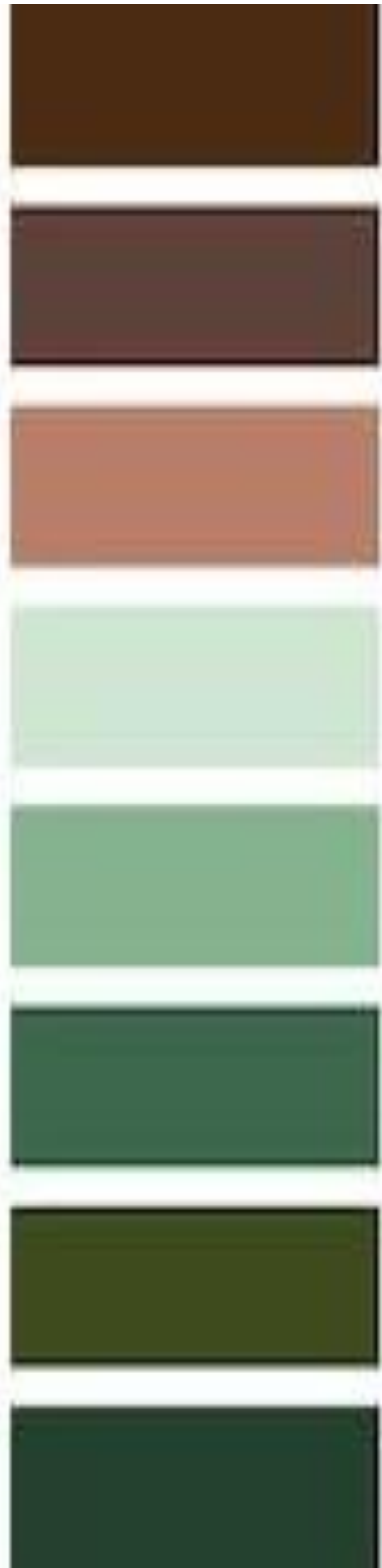
PORTFOLIO 3

Final Schematic Design

*3102 Interior Design Studio III
Fall 2019
Cara Owsley*

ART NOUVEAU

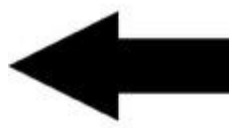
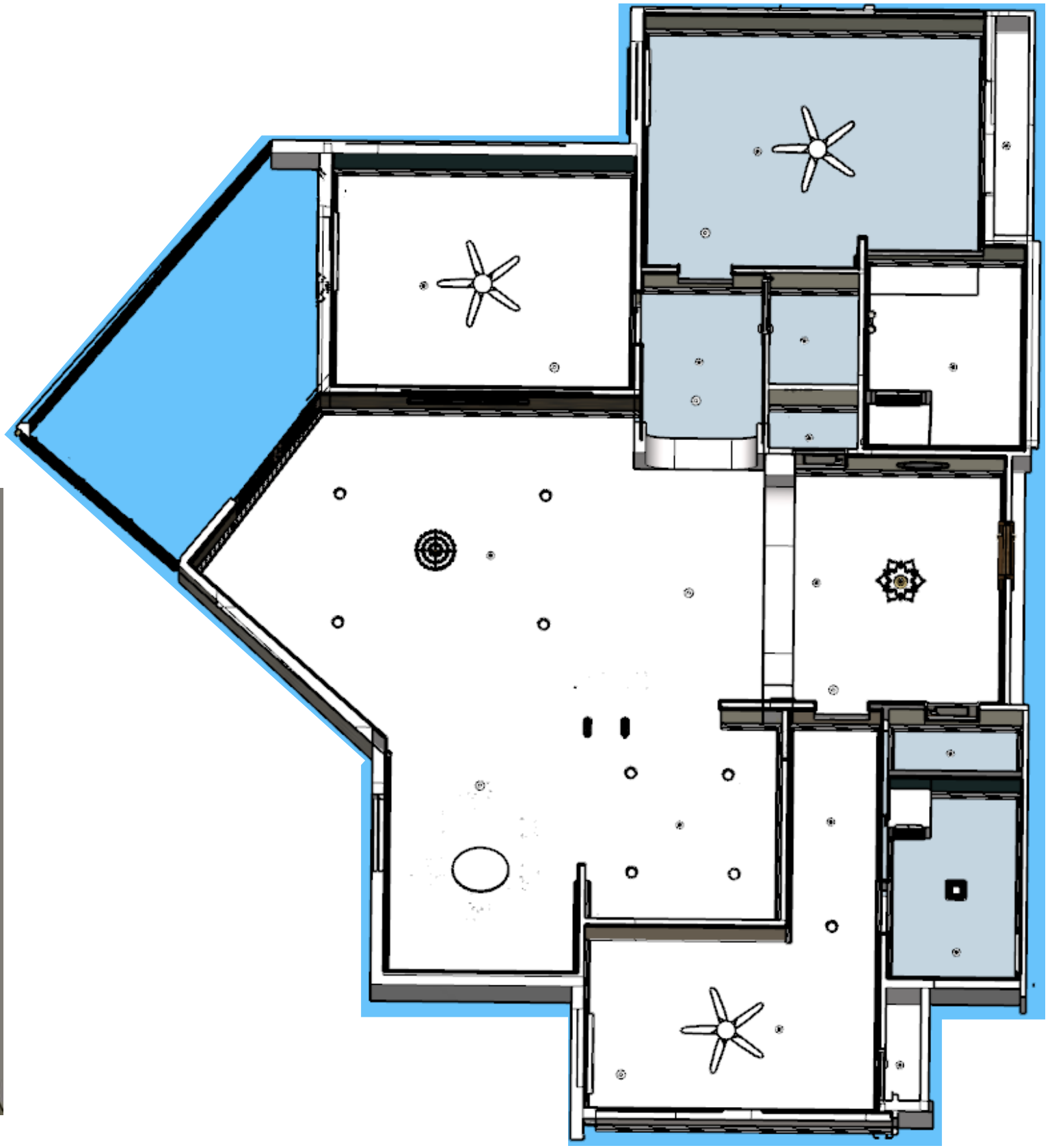
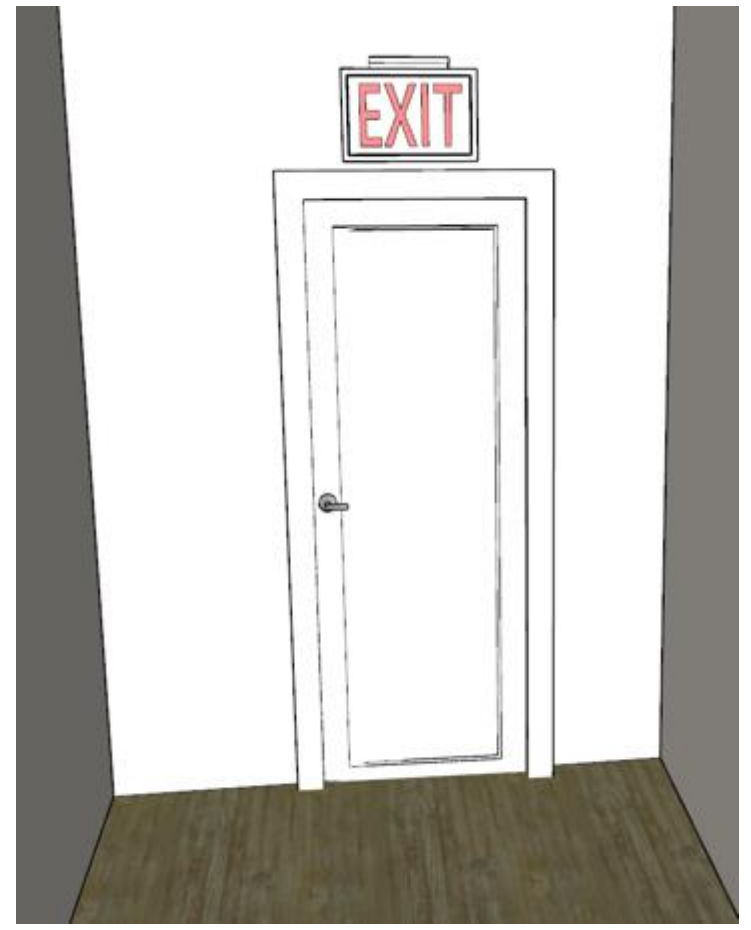
- ❖ *To create a nurturing environment highlighting the fluid shapes of Nature.*
- ❖ *Inspired by Mother Nature, the design will feature warm colors to promote a feeling of overall well-being.*



FURNITURE PLAN



REFLECTED CEILING PLAN



RENDERED PERSPECTIVES

Living Room



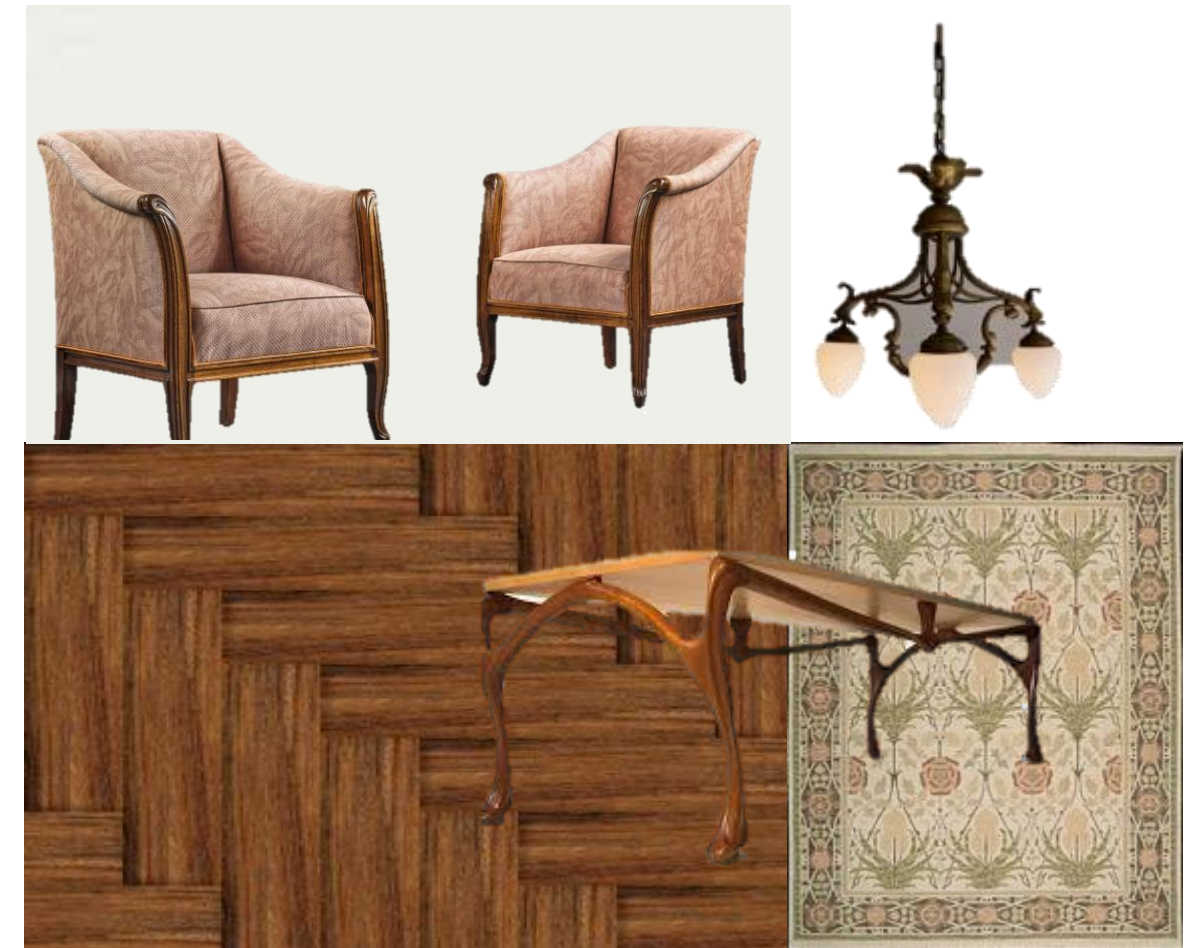
FURNITURE & FINISHES

Option 1



Living Room

Option 2



RENDERED PERSPECTIVES

Entry



FURNITURE & FINISHES

Option 1



Entry

Option 2



RENDERED PERSPECTIVES

Master Bedroom



FURNITURE & FINISHES

Option 1

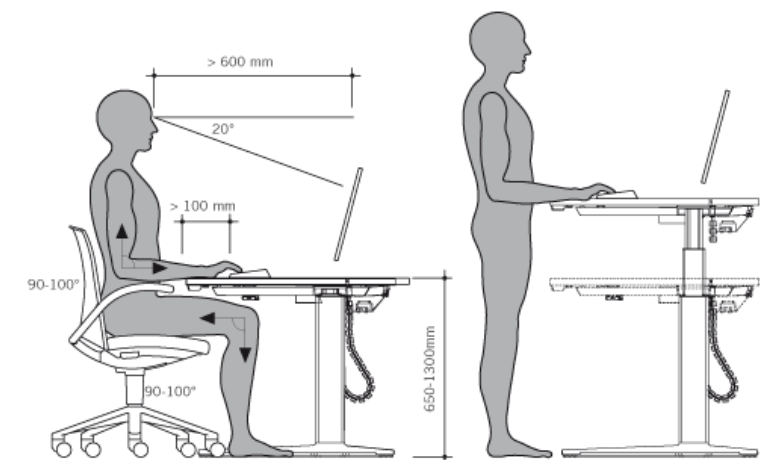
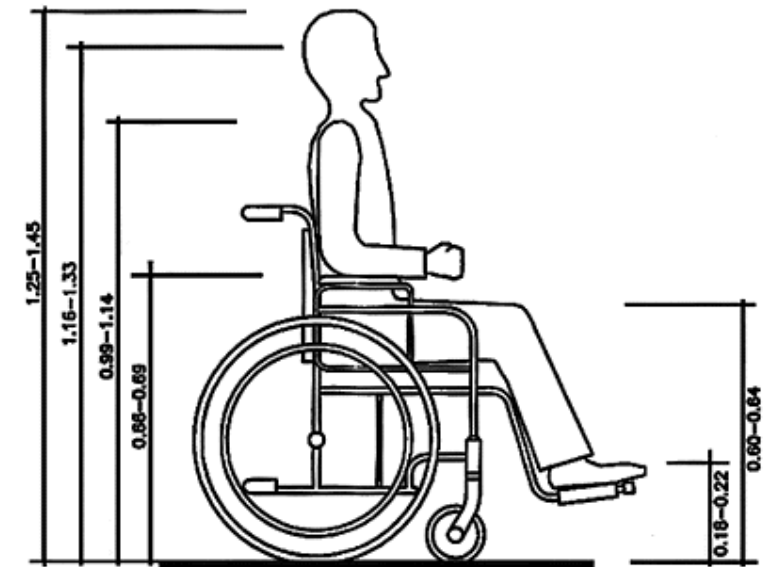
Master Bedroom

Option 2



ANTHROPOMETRIC & ERGONOMIC FEATURES

- ❖ *Anthropometric information used in finalizing the design:*
 - *The kitchen avoids excessively tiring and unnatural movements while making clean up as easy as possible utilizing the “work triangle” and uniting the cooking, storage and washing areas.*
 - *The bathroom shower is tall and deep with grab bars to allow for anyone to safely get in and out.*
- ❖ *The height of the standard writing surface ranges from 28-34” AFF to allow for a wheelchair to fit comfortably under the surface.*
- ❖ *The height of the barrier-free handrail is 33” from the top of nosing.*
- ❖ *A few ergonomic considerations dictated the choice of seating for the space including:*
 - *The seat height is easily adjustable with an adjustment lever*
 - *The seating is an arm’s length away from surfaces to avoid excessive reaching*
 - *The seating has enough width and depth to support everyone comfortably*
 - *The seating is made from cotton and linen to be more durable*

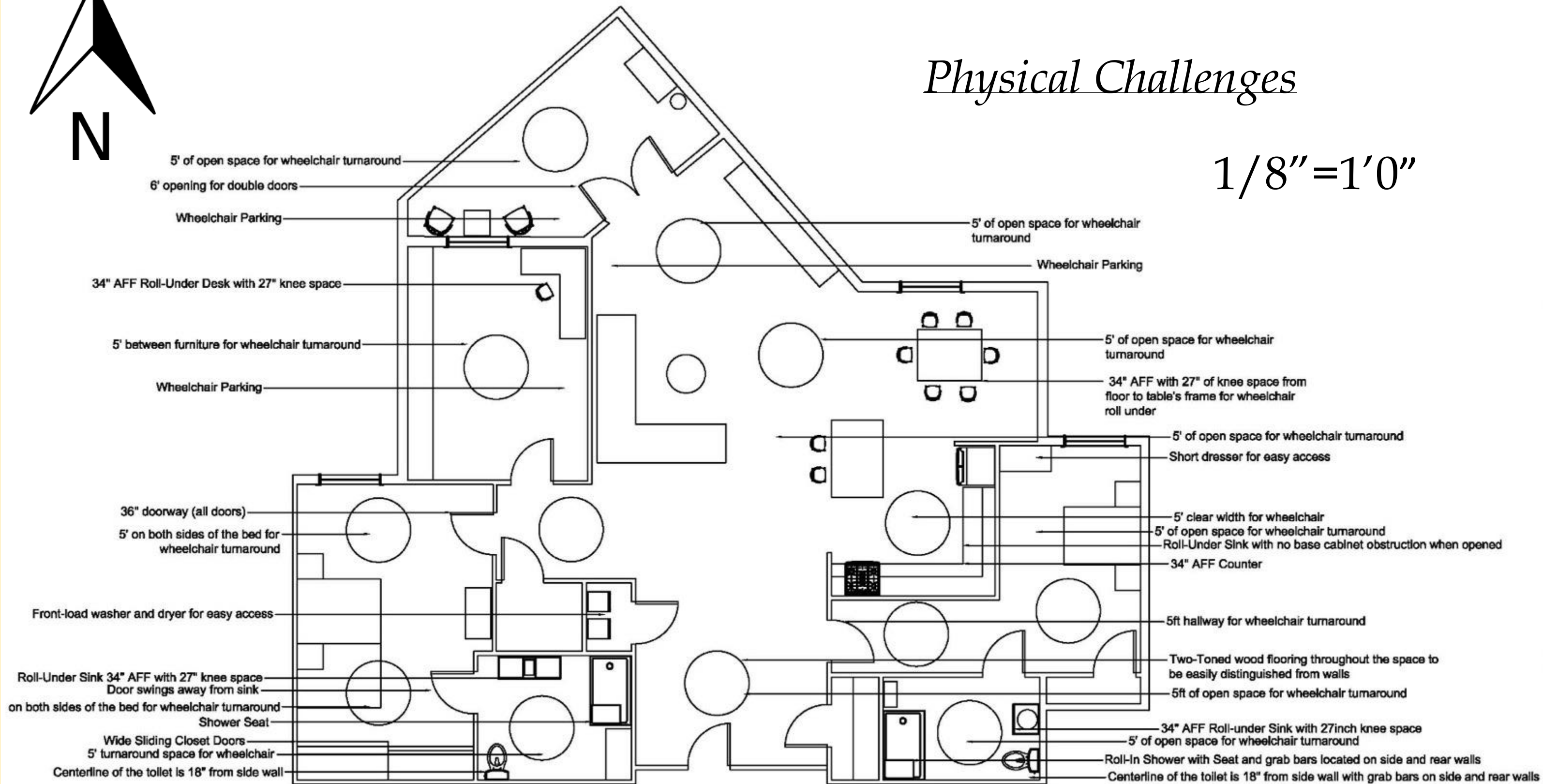


ANTHROPOMETRIC & ERGONOMIC FEATURES



Physical Challenges

1/8" = 1'0"



WALKTHROUGH WITH NARRATIVE



<https://vimeo.com/376904669>

