

EAST CAROLINA UNIVERSITY

Portfolio Three

3102 Interior Design Studio III

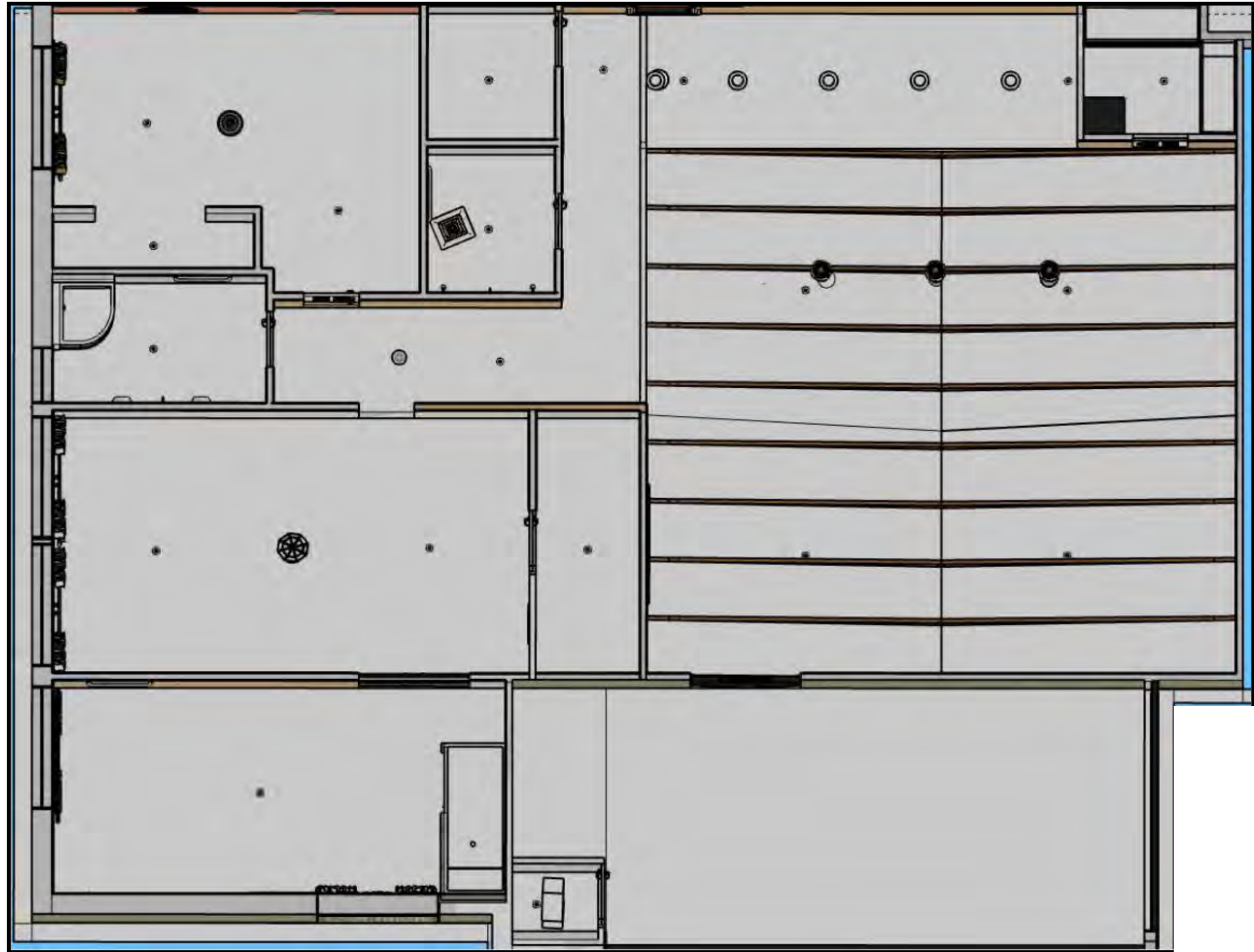
Fall 2019

Caroline Peebles

Furniture Plan



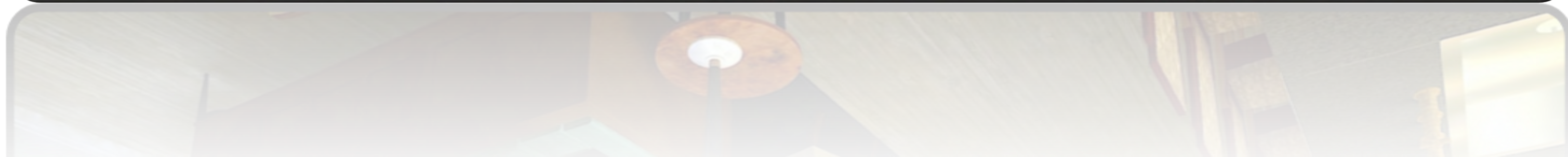
Reflected Ceiling Plan



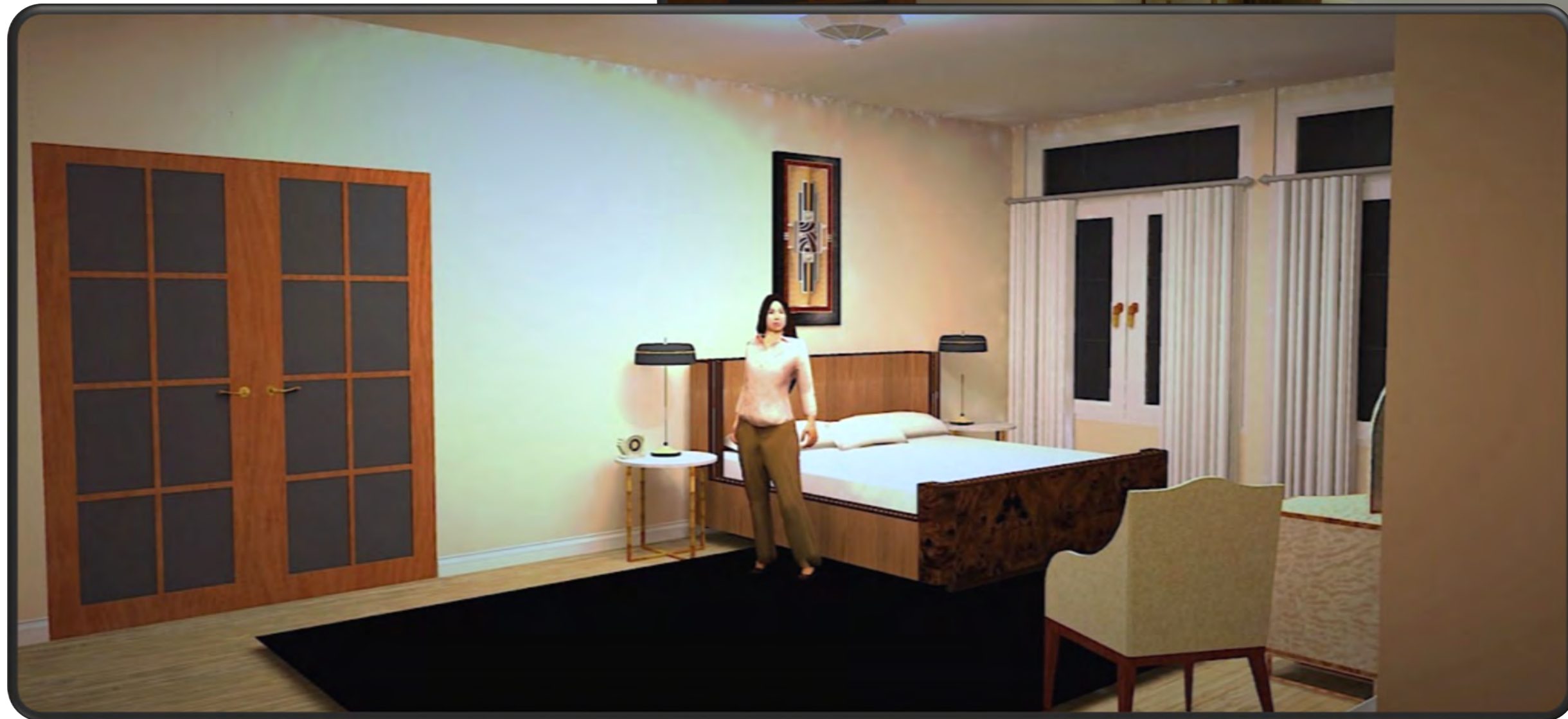
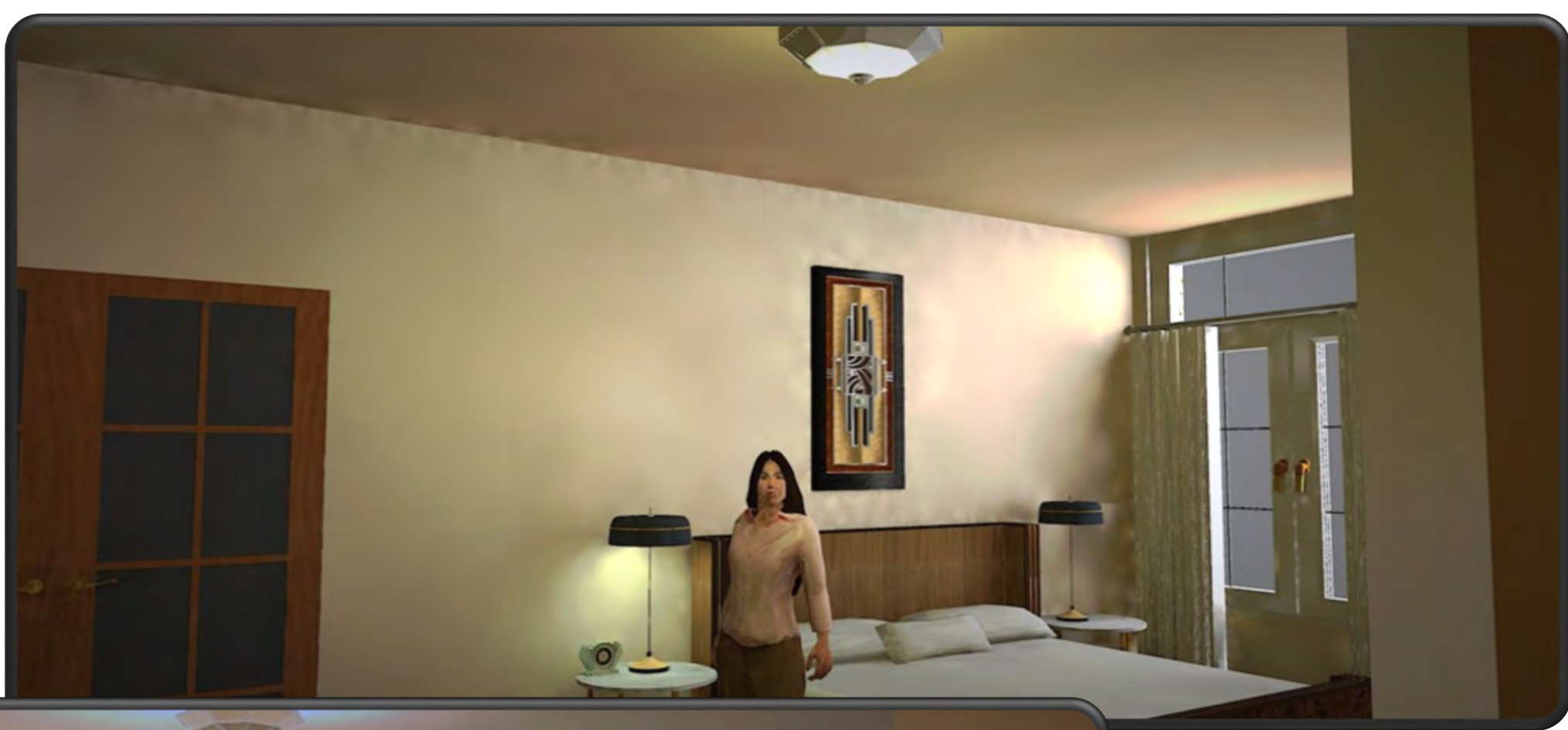
Entry + Kitchen Perspective



Entry + Great Room Perspective



Master Bedroom Perspective



Color Rationale

- **Pale green earth tones paired with shades of beige and pale peach hues are contrasted by bold terra cotta colors to bring together a sophisticated yet vibrant Art Deco Style**



Furniture + Finishes Entry/Kitchen



OPTION 1



OPTION 2

Furniture + Finishes Entry/Great Room

OPTION 1



OPTION 2



Furniture + Finishes Master Bedroom

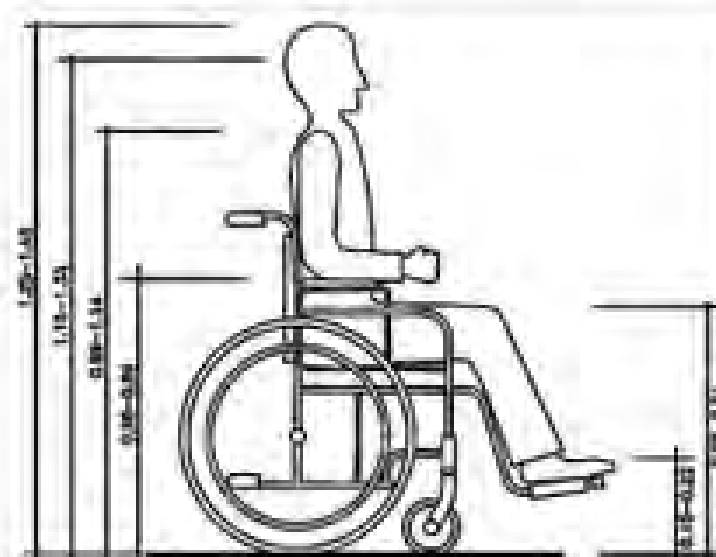
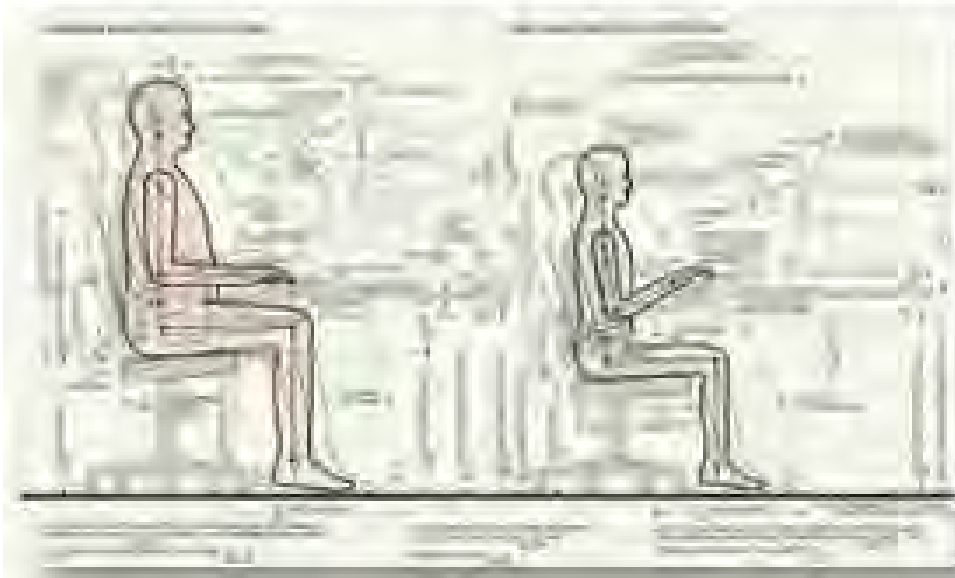


OPTION 1

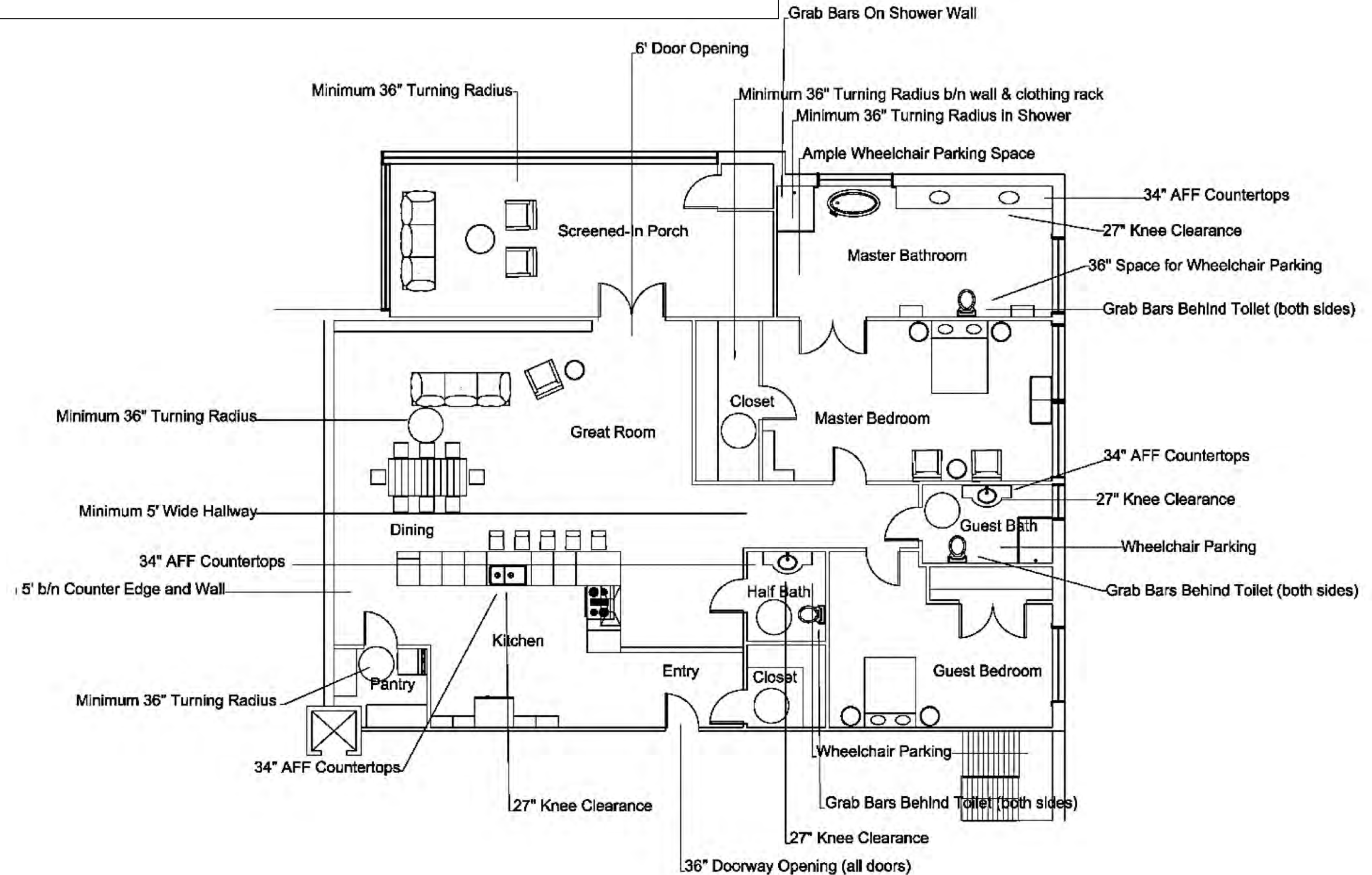
OPTION 2

Anthropometric + Ergonomic Features

- **ADA accessible sink bases allow for easy faucet use in both kitchen and bathrooms**
- **All countertops in bathrooms and the kitchen are no higher than 32" in compliance with ADA code**
- **Guardrails are all the minimum 36" height for safety**
- **All furniture (chairs, sofa, etc.) is wide enough to fit all body types, 18" height for sitting ease and sturdy materials are used to make movement effortless**
- **Desk heights are an appropriate 29" tall**
- **The overall design is free flowing and has minimal obstructions in order for stress-free wheelchair movement throughout the entire space**



Anthropometric + Ergonomic Features



Walkthrough + Narrative

<https://vimeo.com/376964901>

