

PORTFOLIO 3

Final Schematic Design

Paige Stark

IDSN 3102

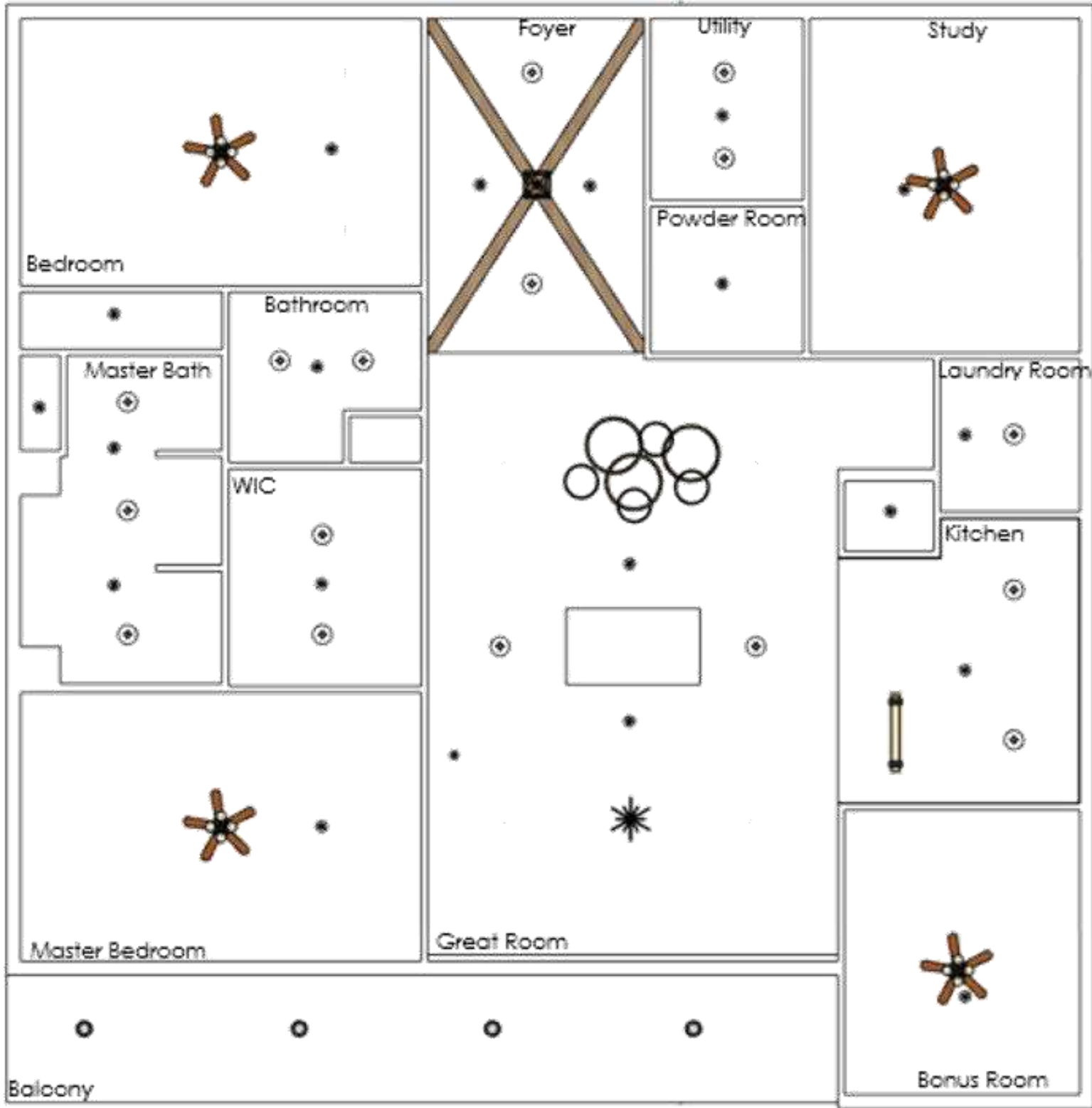
Fall 2019

FURNITURE PLAN



Furniture Plan
Scale: 1/8"=1'-0"

REFLECTED CEILING PLAN



Reflected Ceiling Plan

Common Ceiling Height:
9'

Great Room Ceiling
Height: 11"

Smoke Alarm: 1 outside
each Bedroom

Sprinklers: 1 in each room,
1 every 15'

Lighting: pendant lights,
and dimmable recessed
lights

Scale: 1/8"=1'-0"

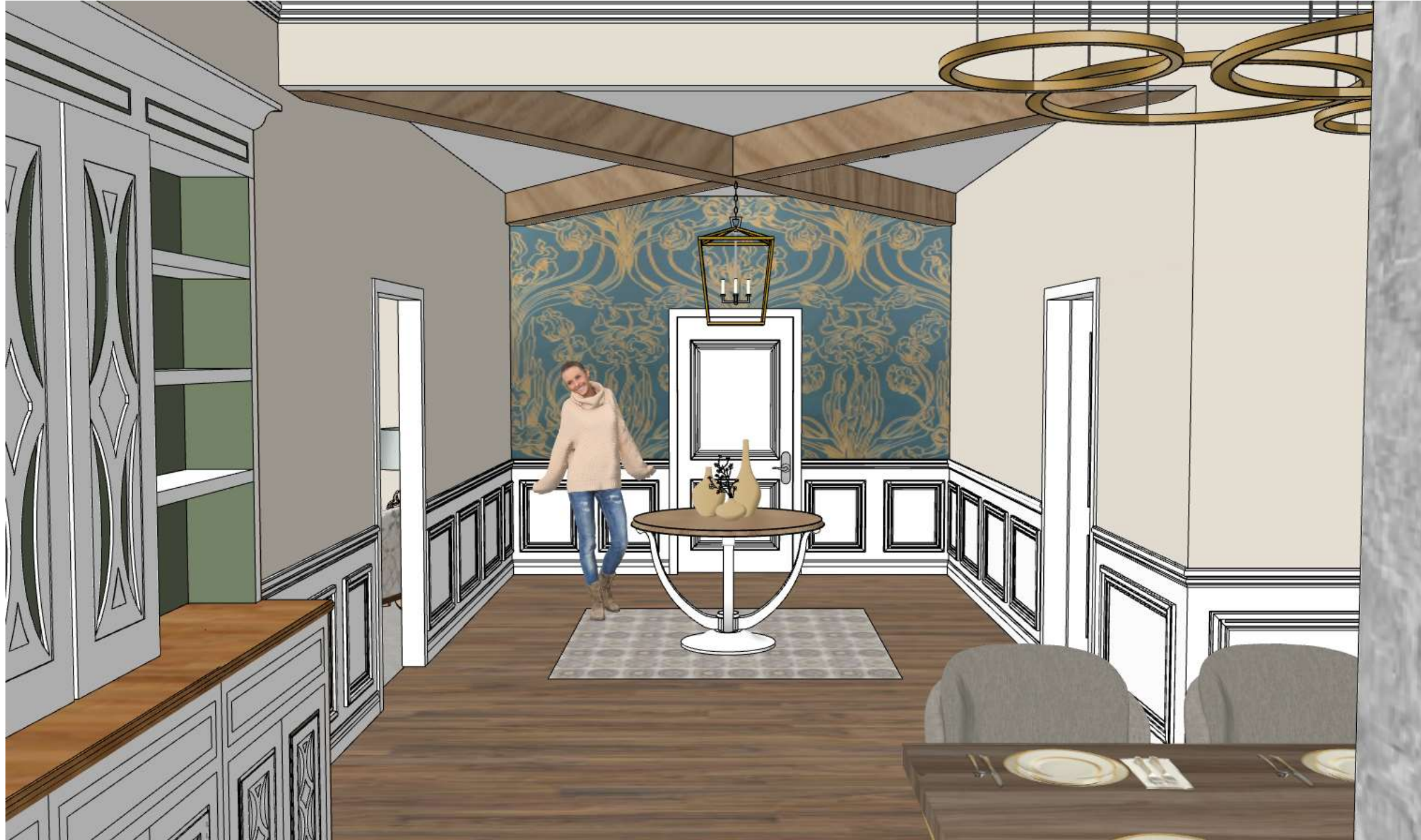
COLOR RATTIONALE



Whimsical & Inviting

- Throughout occupant's home the colors will stem from the Jugendstil style.
- Warm and cozy
- Inspiration is drawn from both organic and geometric forms, merging flowing, natural designs with more angular and rigid contours in order to capture the Jugendstil Style.

PERSPECTIVE

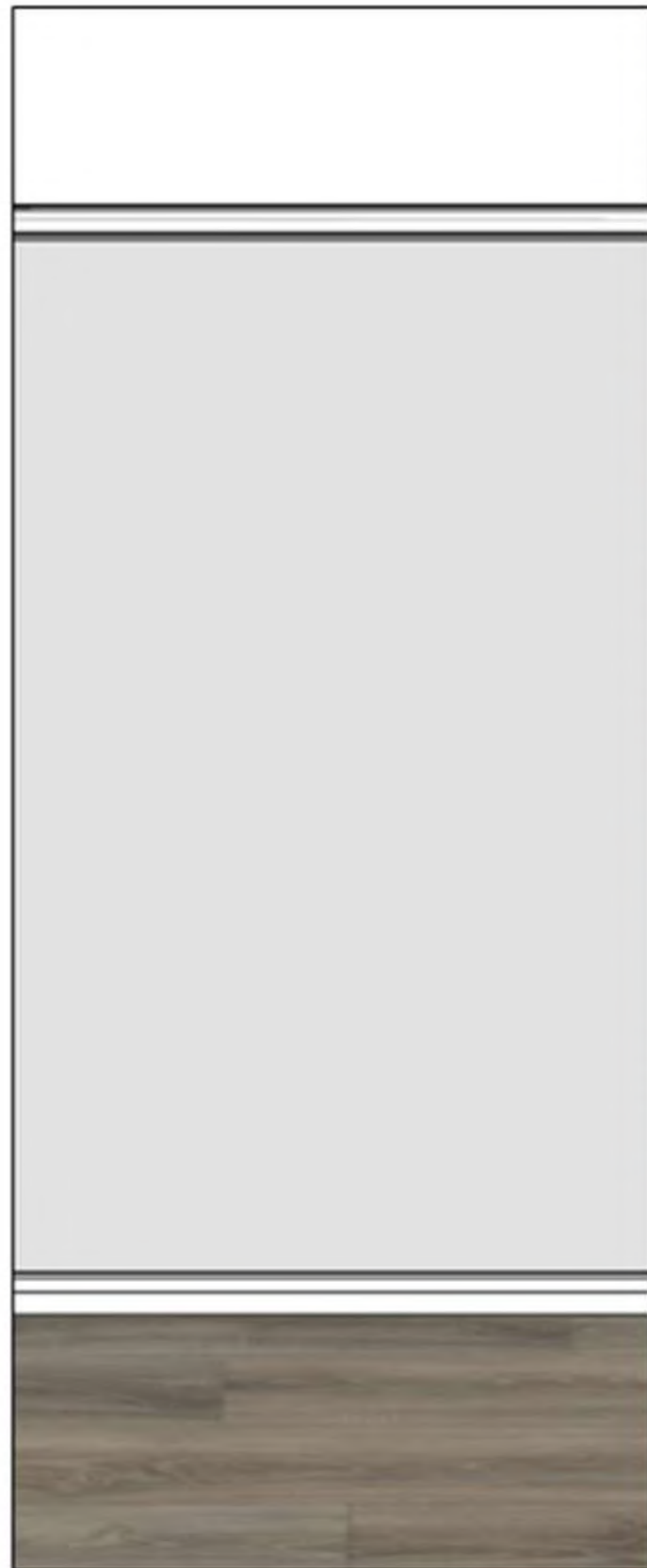


FURNITURE & FINISHES



Entry
Option #1

FURNITURE & FINISHES



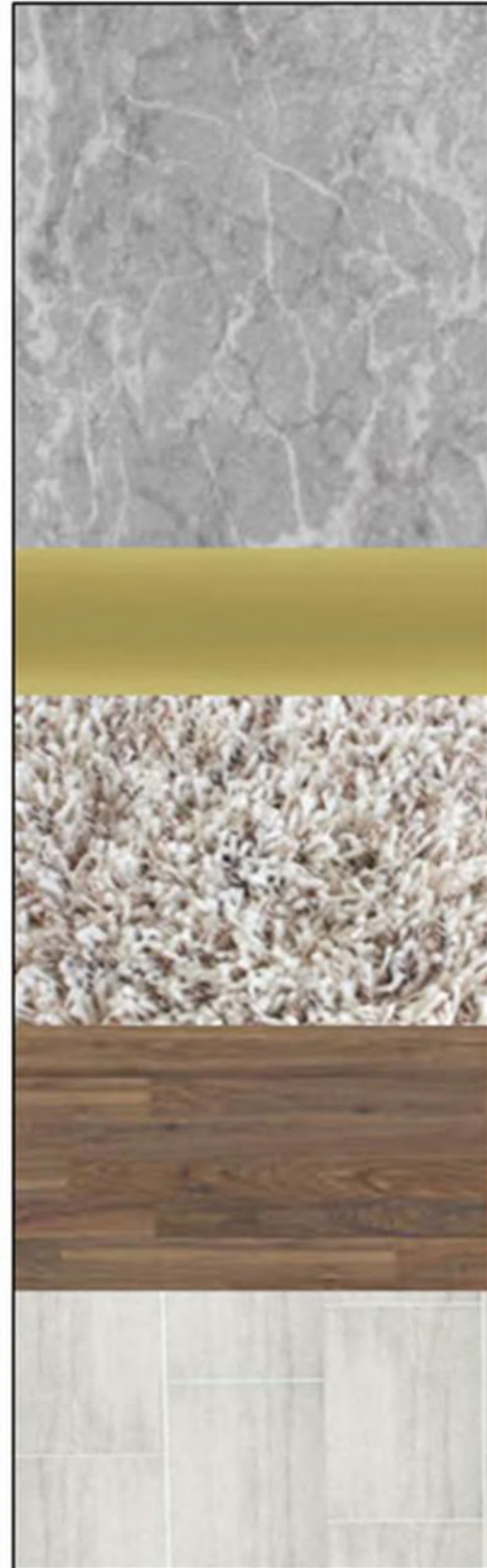
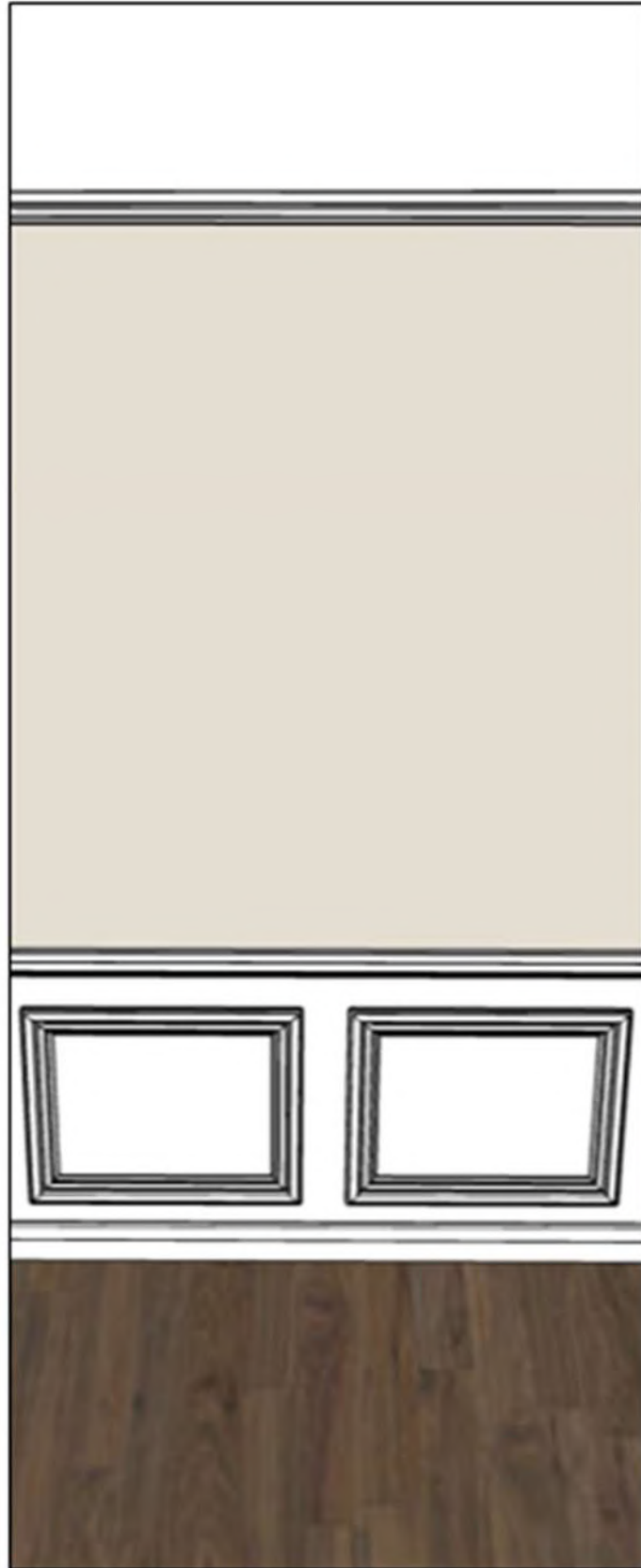
Entry
Option #2

PERSPECTIVE



Living Room

FURNITURE & FINISHES



Living Room
Option #1

FURNITURE & FINISHES



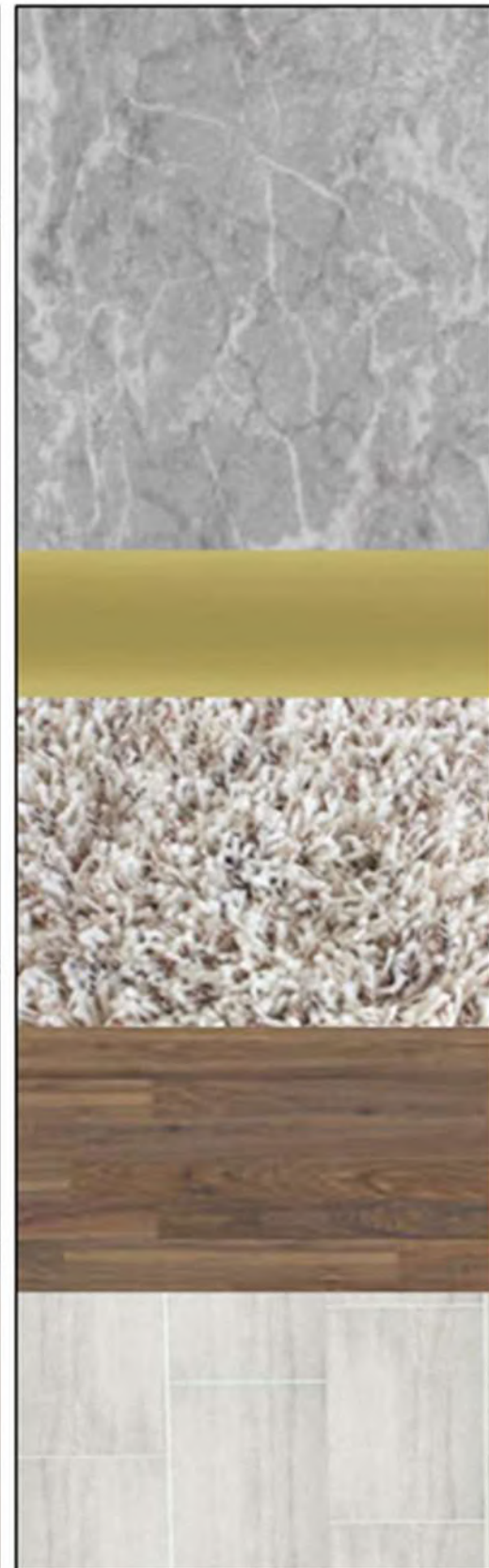
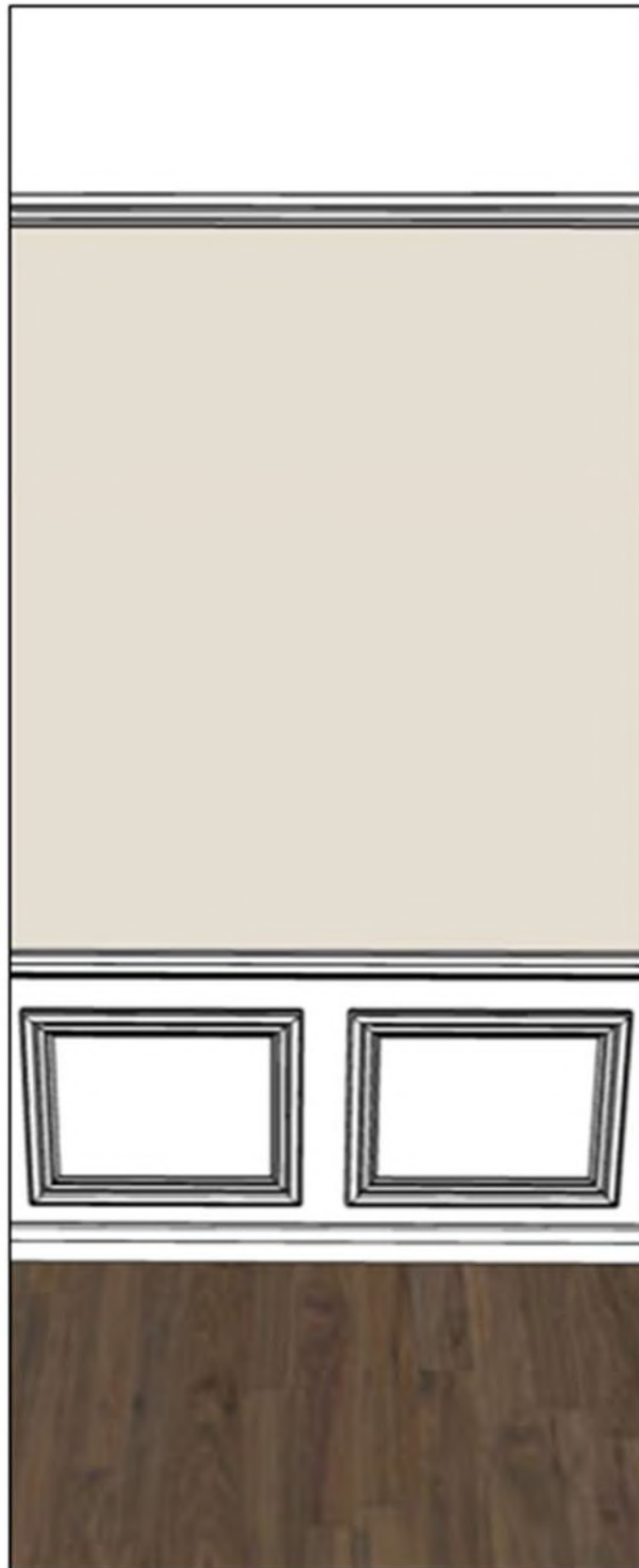
Living Room
Option #2

PERSPECTIVE



Master Bedroom

FURNITURE & FINISHES



Master Bedroom

Option #1

FURNITURE & FINISHES



Master Bedroom

Option #2

ANTHROPOMETRIC AND ERGONOMIC FEATURES



Not to Scale

Doors

- 36" doors
- Minimum of 18" of clear floor space on the pull side
- Door lever are usable with one hand, without tight grasping, pinching or twisting of the wrist

Bathrooms & Kitchen

- Horizontal grab bar on the adjacent side wall, 40" long and 36" above the floor for stabilization and assistance during transfer from a wheelchair
- Comfort height commode (19" from floor)
- Master sink has at least 29" of clearance under the front edge to allow wheelchair users to pull under the sink and use the faucet
- Faucets that are easily operable with hardware that is usable with one hand
- Shower spray unit has a hose that is 60" long and can be used both as a fixed shower head and as a handheld shower.
- Securely fastened folding seat 19" above the floor

Bedrooms

- At least a 36"-wide route on each side of the bed and at the foot of the bed
- Rods and shelves in the closet within 54" of the floor for side approach or 48" of the floor for forward approach

Floors

- Flooring is non slip with smooth transitions between carpet and hardwood

ANTHROPOMETRIC AND ERGONOMIC FEATURES

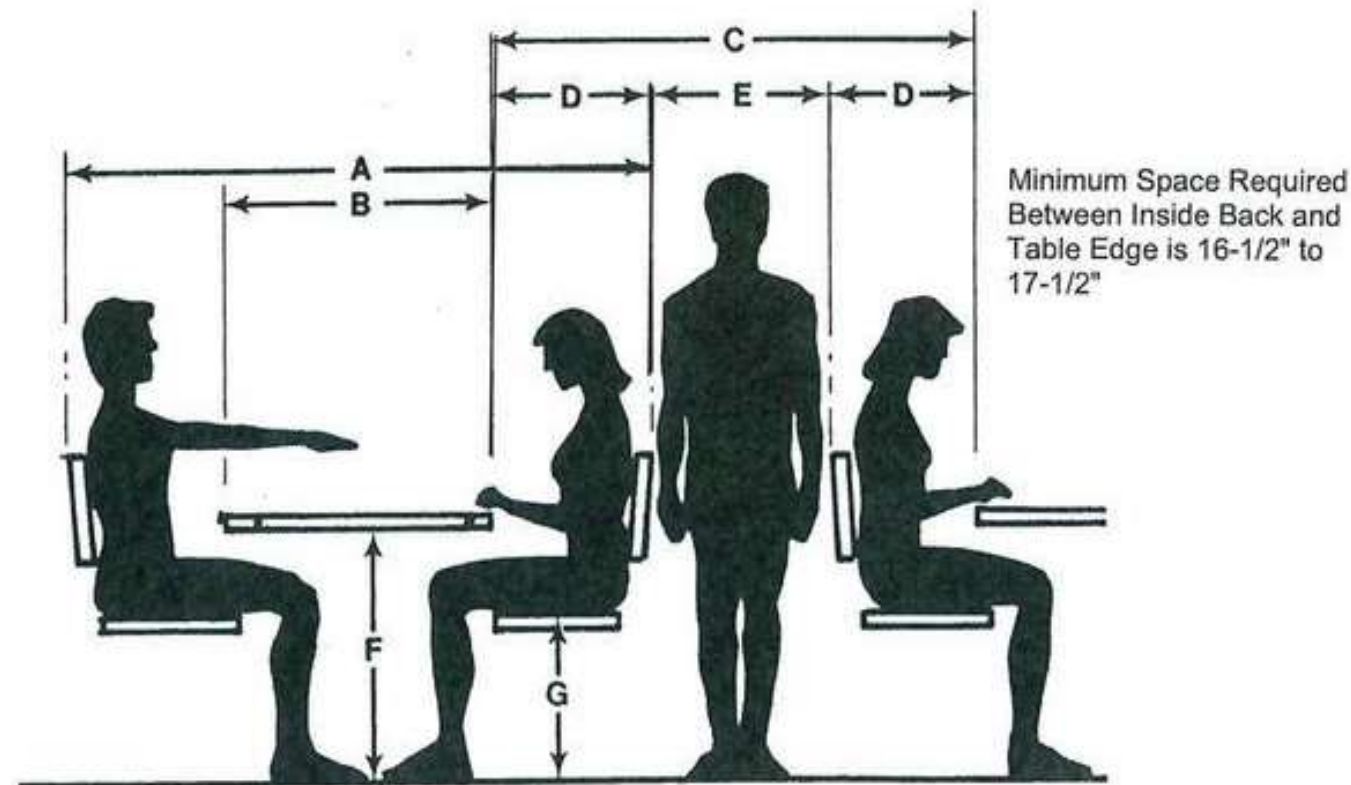
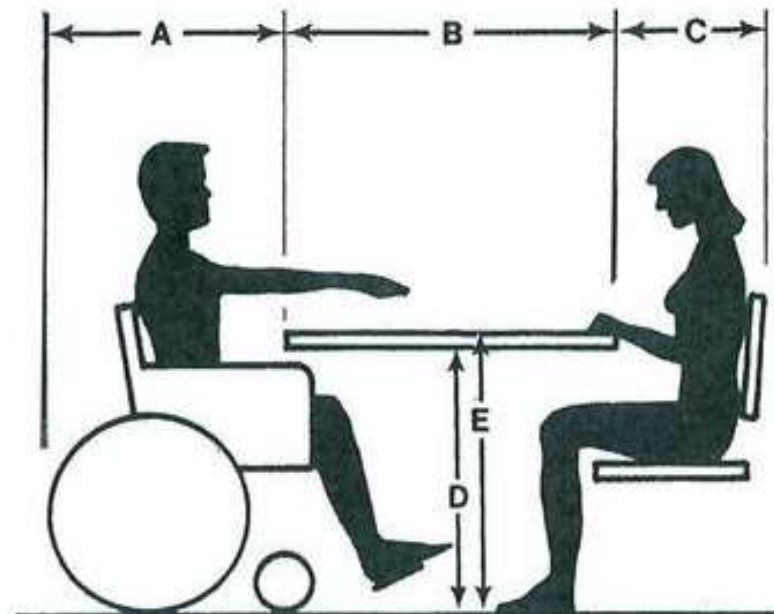


Table Dimensions

A. Total area required for table	60" - 90"
B. Table top width	24" - 42"
C. Customer traffic and seating area	54" - 72"
D. Customer seating area	18" - 24"
E. Traffic area	18" - 24"
F. Tabletop height	29" - 30"
G. Seat height	16" - 18"

Wheelchair Seating Requirements

A. Wheelchair seating area	30"
B. Tabletop width	24" - 42"
C. Customer seating area	18" - 24"
D. Distance to underside of table	30"
E. Tabletop height	31"



Features:

Handrails – 36" from top of nosing

Work surfaces are 30", which is a good sitting height for most people between 5'8" and 5'10" tall

Seating:

- Built in adjustable lumbar support in the furniture frames to provide positive support for the lower back and helps with posture.
- Resilient seats provides support without sagging or sponginess
- Additional padding for comfortable knee support
- Arms on seating for extra support when getting in and out of the seat
- Furniture made to fit the average body
- Soft padding for shoulders
- Adjustable headrest supports for the neck and head
- Seating height at 18"

WALK THROUGH



<https://vimeo.com/377126624>