

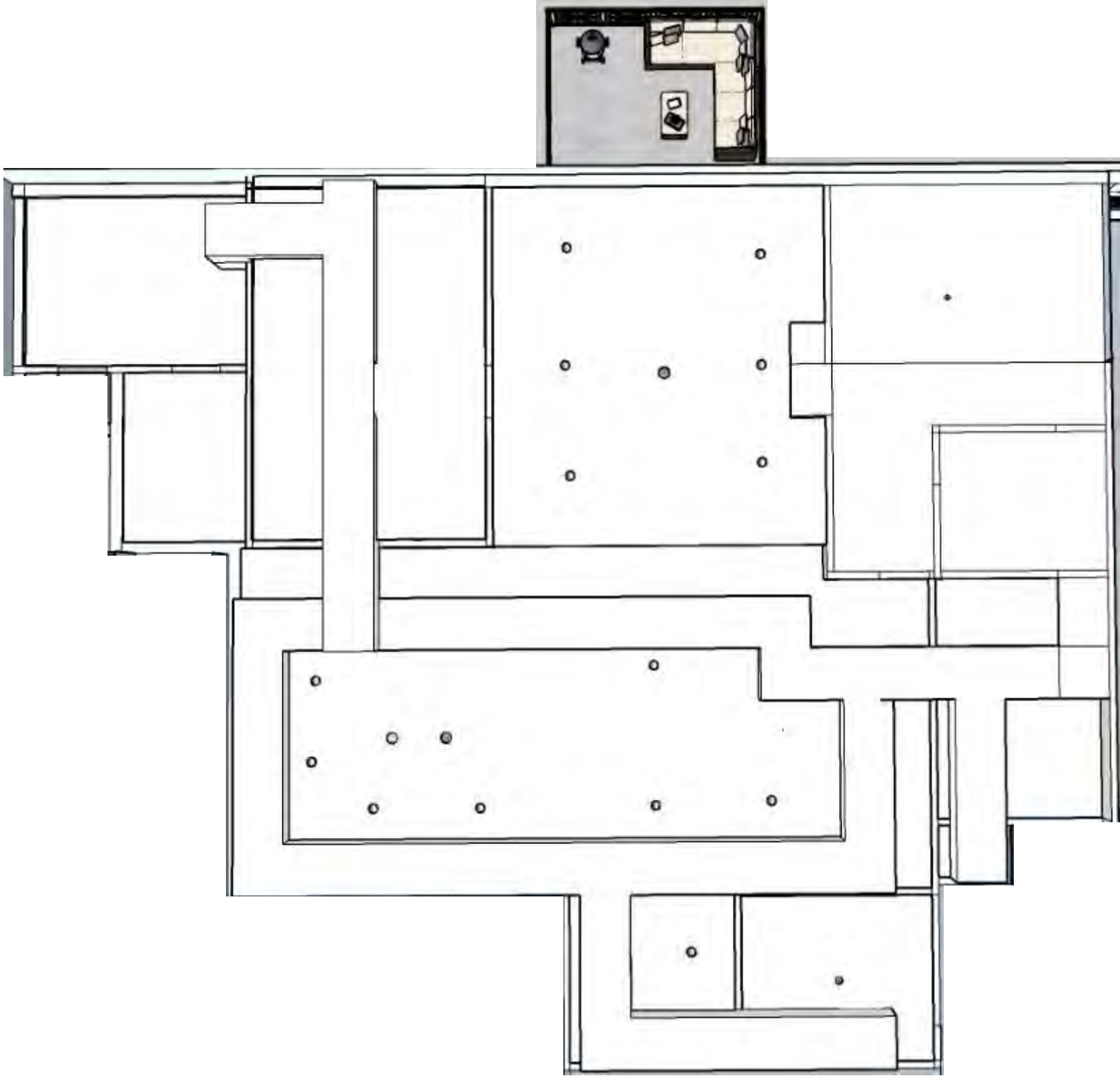
# PORTFOLIO THREE

KENDALL WACHTEL

# FURNITURE PLAN



REFLECTED CEILING PLAN



## COLOR RATIONALE



- Wood is prominent in the Anglo-Indian style
- Yellows, tans, and reds are commonly used on walls, tiles, and textiles in Anglo-Indian interiors
- Bright blues are sometimes seen in, mainly Indian fabrics and sarees, a women's cloth that is typically worn around the waist
- Patterns in wood and patterned tiles are also very popular throughout the Anglo-Indian style

# KITCHEN

## OPTION ONE



## OPTION TWO



# DINING

## OPTION ONE



## OPTION TWO



## KITCHEN & DINING ROOM PERSPECTIVES



# LIVING ROOM

## OPTION ONE



## OPTION TWO





# MASTER BEDROOM

## OPTION ONE



## OPTION TWO



# LIVING & MASTER BEDROOM PERSPECTIVES



MASTER BATH

OPTION ONE



OPTION TWO



# GUEST BEDROOM AND BATHROOM

## OPTION ONE



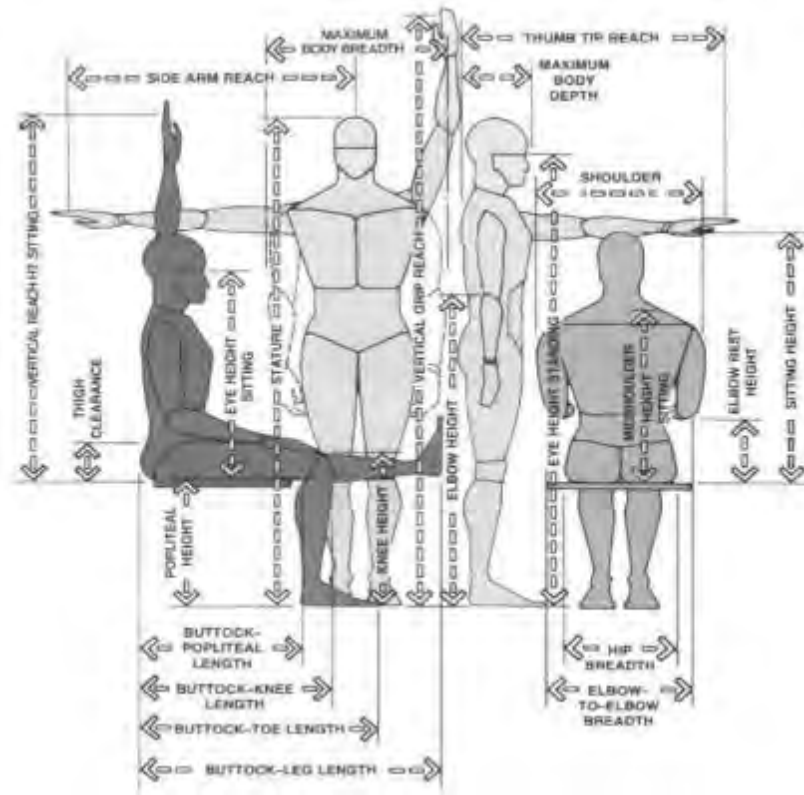
## OPTION TWO



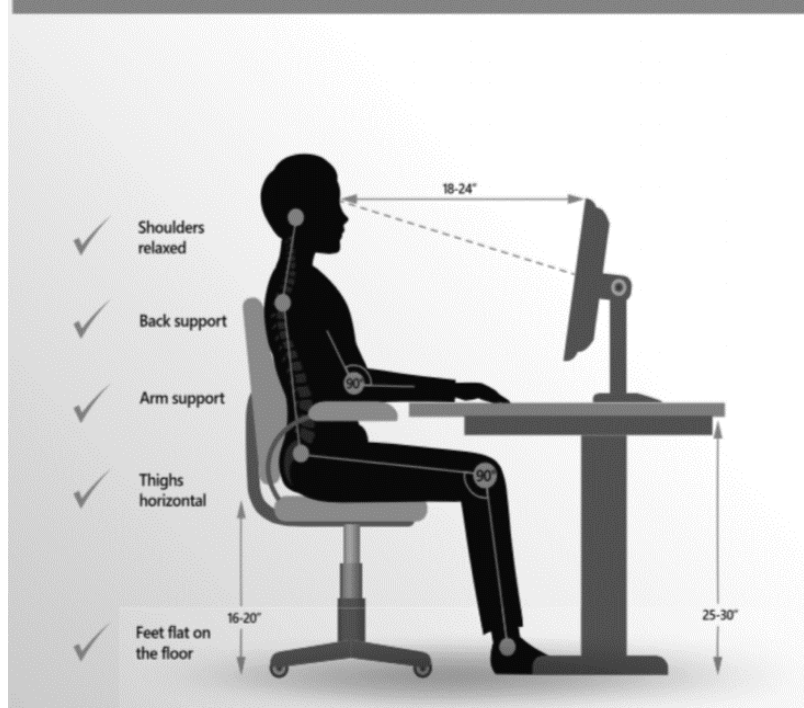
# MASTER BATH & GUEST BED AND BATH PERSPECTIVES



# ERGONOMICS



## CORRECT SITTING POSTURE



- An upright and straight back allows for better posture and more comfortable seating position
- Arms on either side help for easier access in and out of the chair
- Higher seating height of 18" makes it easier to sit and exit smoothly
- A firm, comfortable cushion allows for a longer seating time
- Lower counter heights throughout
- Easy to use hardware on cabinets and lever handles on doors
- Roll in showers
- Grab bars

# NARRATED WALKTHROUGH

<https://vimeo.com/374587365>