



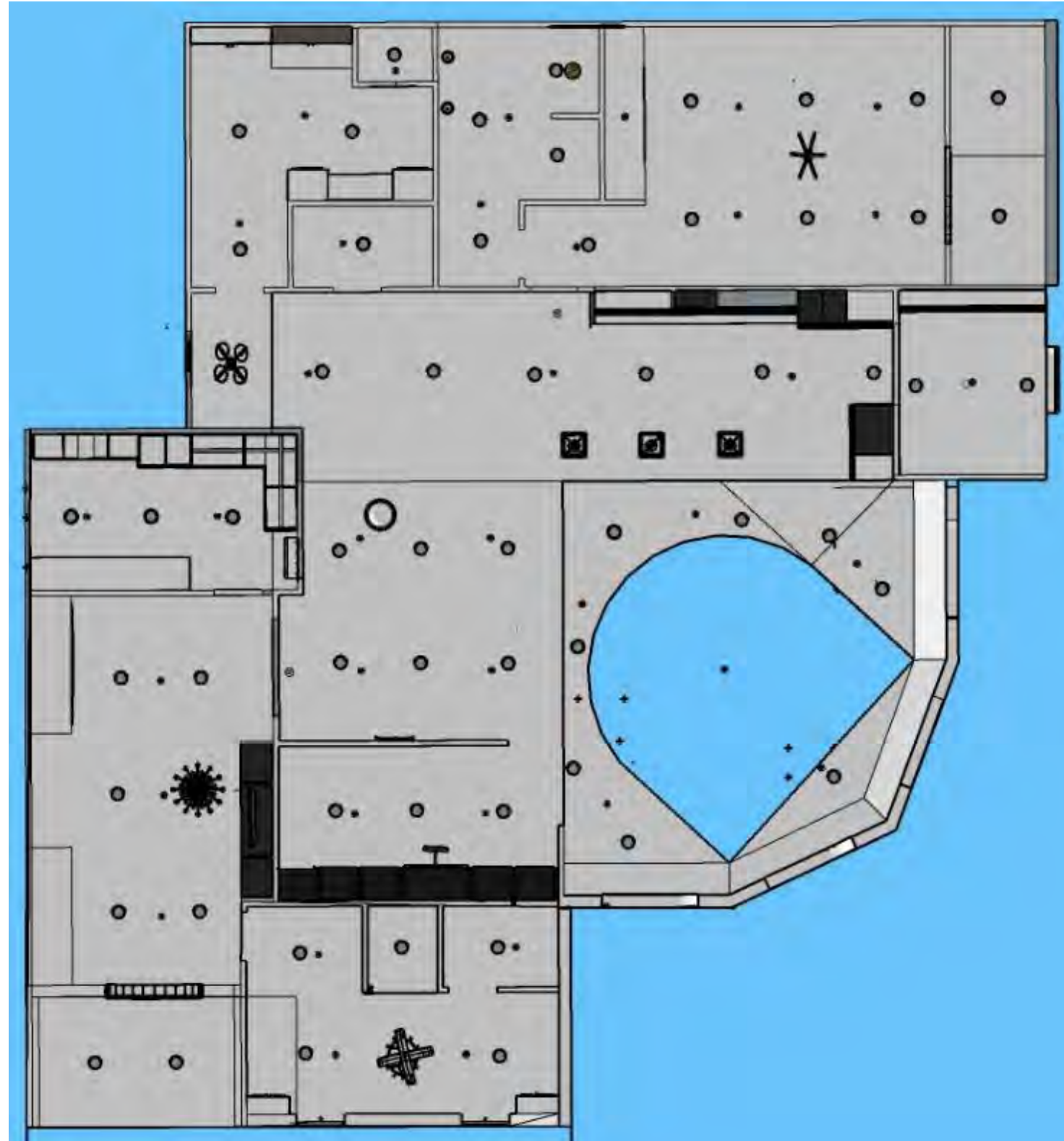
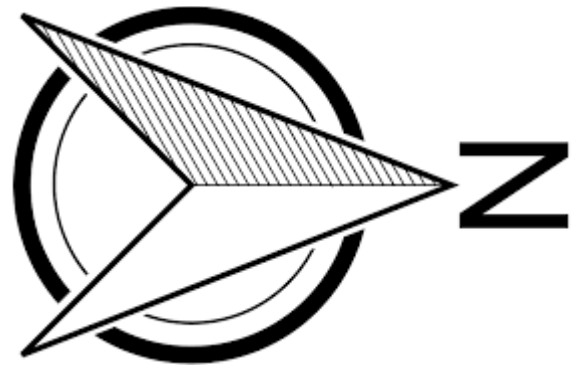
LAUREN MILLER

PORTFOLIO

3



FURNITURE PLAN



REFLECTED CEILING PLAN



ENTRY



PRIMARY BEDROOM



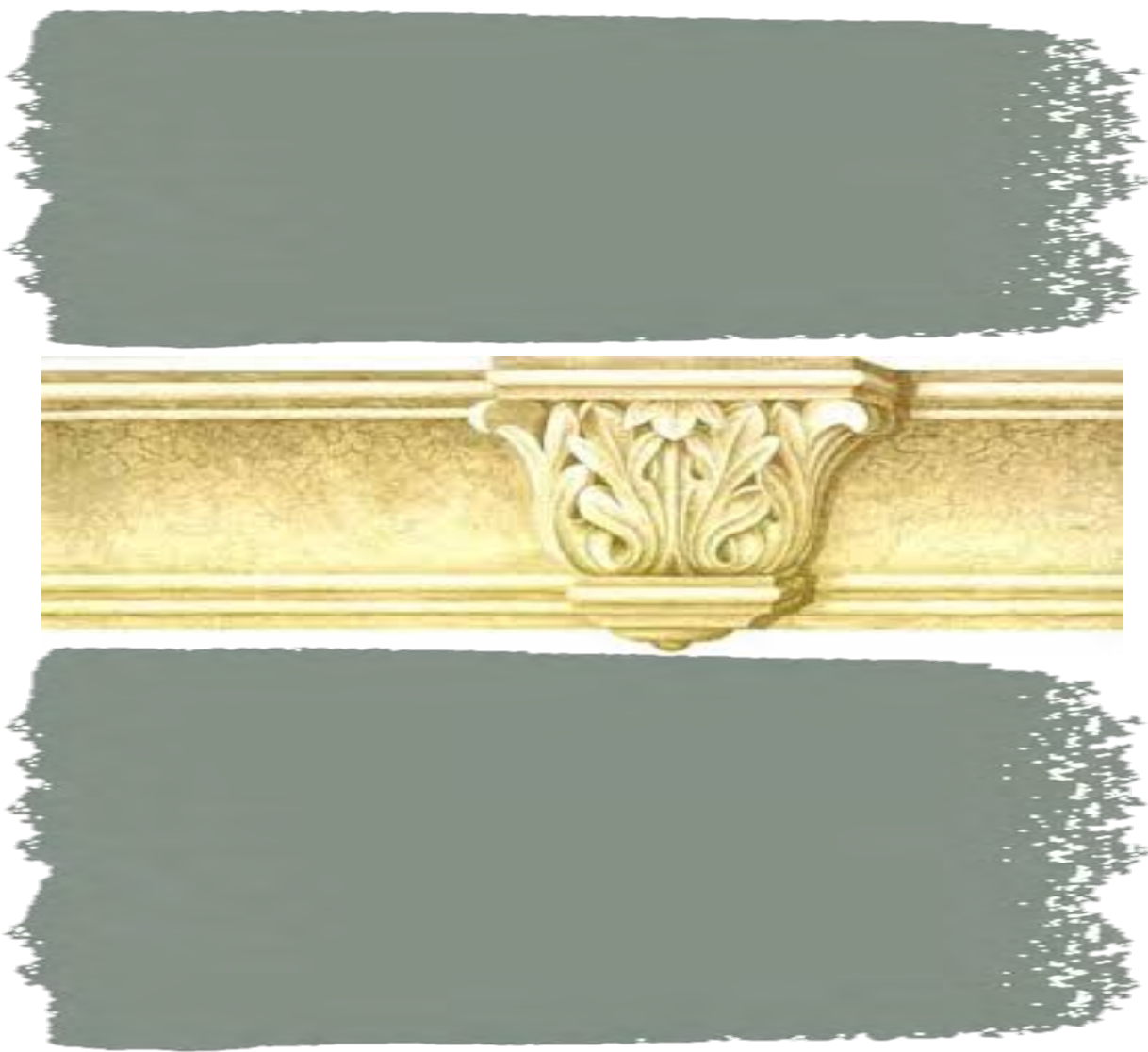
GREAT ROOM

Modern Royals



- Muted jewel tones update the regency style to a suitable color scheme for aging in place user
- Plays up neutral tones while still creating a relaxing feel for the seniors
- Eye catching colors paired with soft metallics
- Darker colors in areas of direct sun and high ceilings

COLOR RATIONALE



PRIMARY BEDROOM



PRIMARY BEDROOM



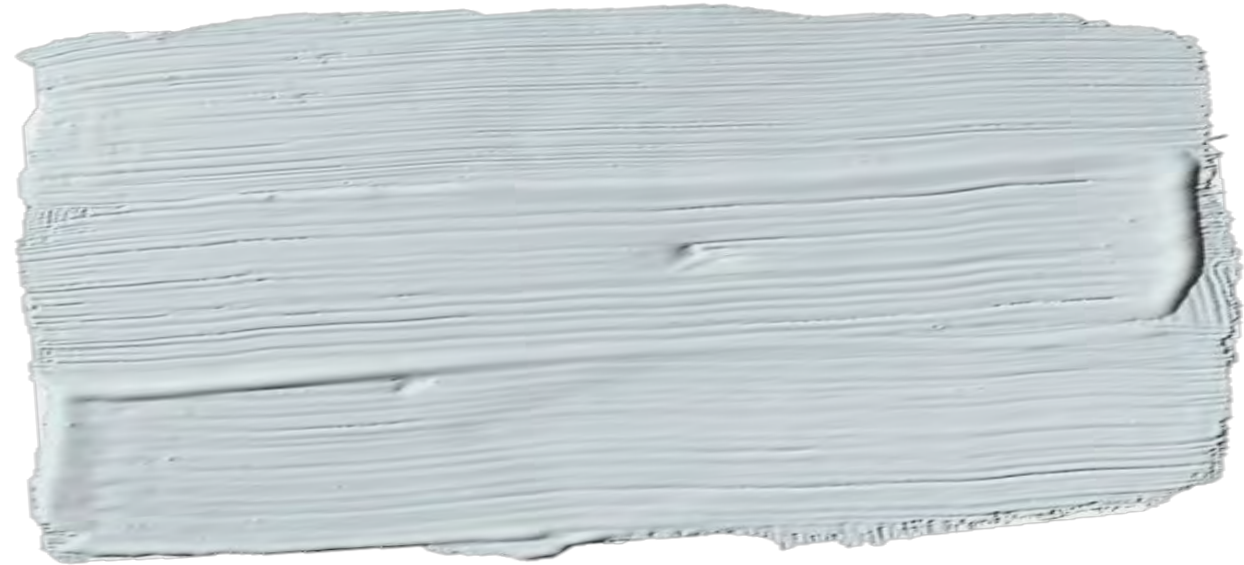
DINING ROOM



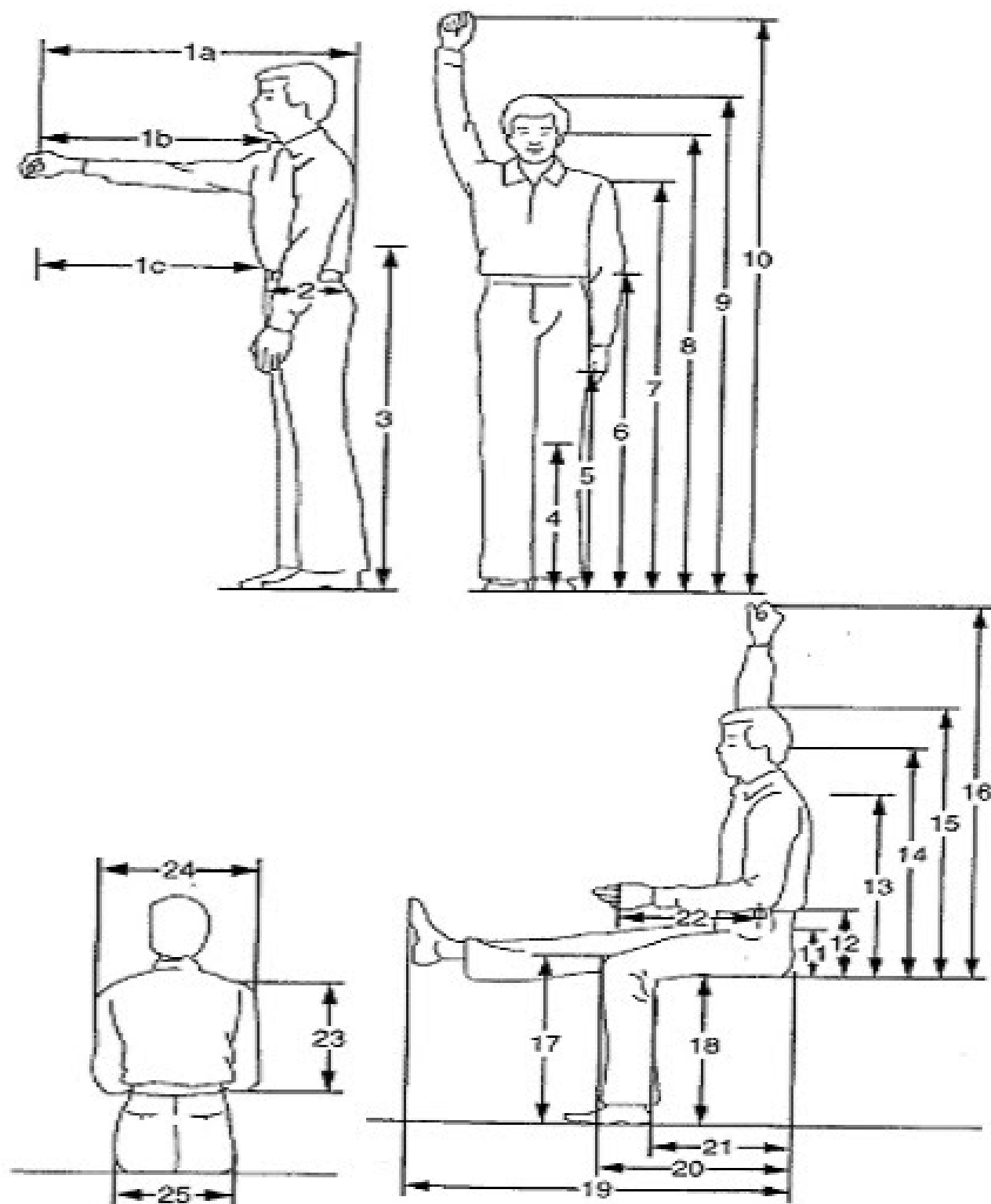
DINING ROOM



LIVING ROOM

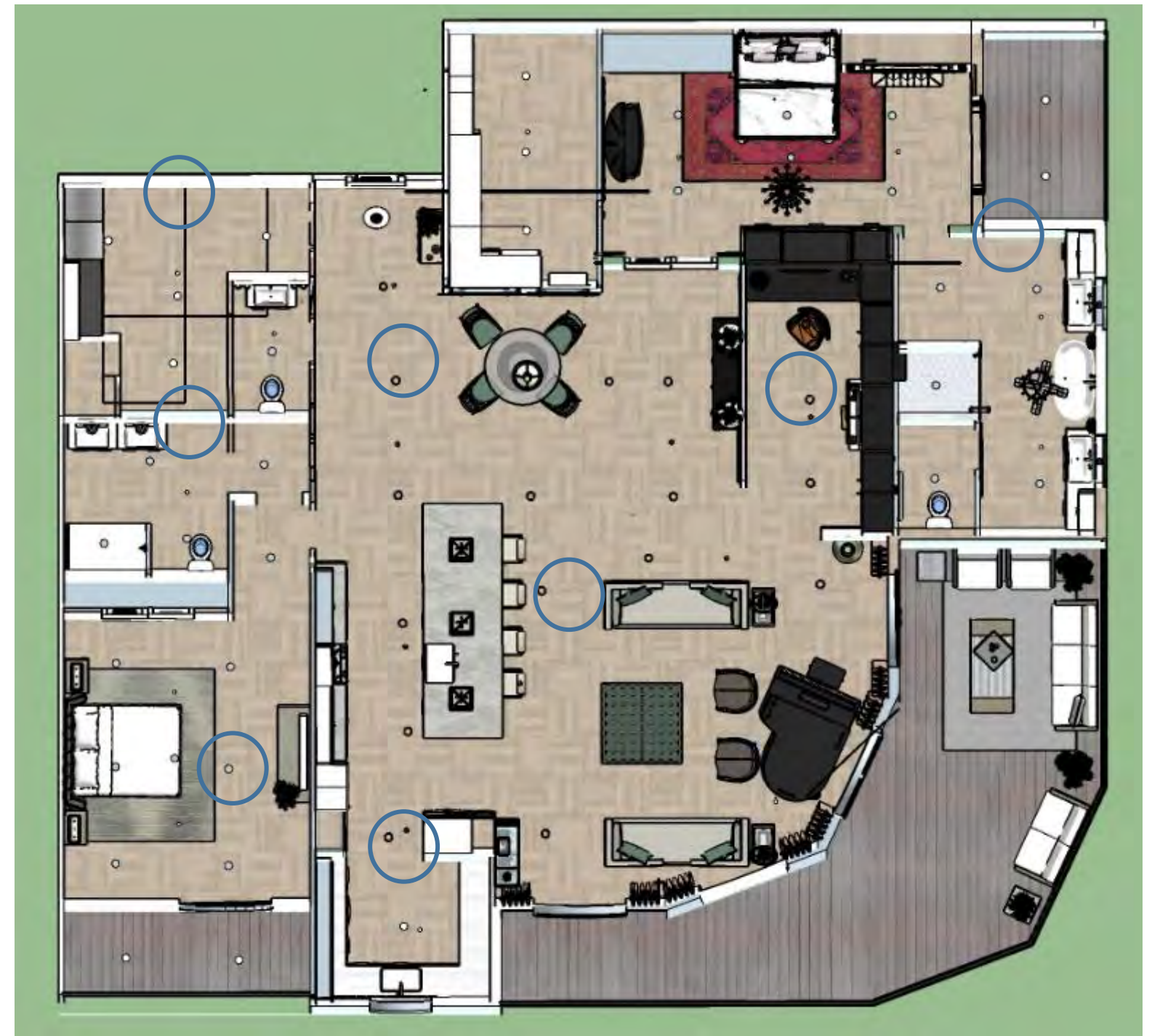


LIVING ROOM



ANTHROPOMETRIC ERGONOMIC FEATURES

&



- Anthropometric information was used in the selection of the counter tops, table tops, and seating height.
- Ergonomic considerations were used in the choice of seating for the spaces. Furniture with stiffer cushions, and higher seat heights make it easier for users to get in and out of the chair.
- The design kept the needs of the user in mind when creating wheel chair assessable pathways
- The needs of deaf users were also considered by creating an open floor plan, making it easier for the hearing impaired to communicate.
- Users with sight loss will be able to take advantage of the hazard free paths and abundant daylight.
- The height of the barrier free railing from the top of the nosing is 36 inches
- Standard writing height 28"-30"