

PORTFOLIO 1

IDSN 3102
CASSIDY GRACE

SUSTAINABILITY RESEARCH

- ❖ **OVERALL GOAL IS TO BE ENVIRONMENTALLY AND HUMANLY RESPONSIBLE WHILE STILL HAVING A DESIGN AESTHETIC**
- ❖ **THERE ARE MANY BENEFITS OF SUSTAINABLE DESIGN, SOME OF WHICH INCLUDE BRAND REPUTATION, OPERATIONAL COST SAVINGS, AS WELL AS WORKFORCE WELL-BEING.**
- ❖ **AWARENESS OF LIMITED NATURAL RESOURCES, USE OF ENERGY-EFFICIENT AND ENVIRONMENTALLY RESPONSIBLE DESIGN MATERIALS IS A KEY FACTOR IN SUSTAINABILITY.**
- ❖ **SUSTAINABLE, NON-TOXIC PRODUCTS CAN HAVE A POSITIVE IMPACT ON BOTH NATURAL RESOURCES AND HUMAN HEALTH.**
- ❖ **SOME SUSTAINABLE MATERIALS FOR SPECIFIC CONSTRUCTION INCLUDE:**
 - **FABRICS: NON-TOXIC CHEMICALS, RENEWABLE, ANIMAL BY-PRODUCTS, LONGEVITY, BIODEGRADABLE**
 - **WINDOW TREATMENTS: FABRIC, NATURAL GRASS, BAMBOO, WOOD MADE FROM FSC WOOD IN THE FORM OF BLINDS, COMPOSITES MADE WITH 100% RECYCLABLE AND RENEWABLE MATERIALS**
 - **FLOORING: RECLAIMED WOOD, FAST GROWING MATERIALS, TILE OR TERRAZZO**
 - **WALLS AND CEILINGS: NON-VOC PAINTS, RECYCLED TILES, EARTH-BASED PLASTERS, WALL COVERS MADE FROM RAPIDLY RENEWABLE SOURCES WITH SAFE PASTE, FAUX STONE, WALL PANELS MADE FROM ECO-FRIENDLY AND NONTOXIC**



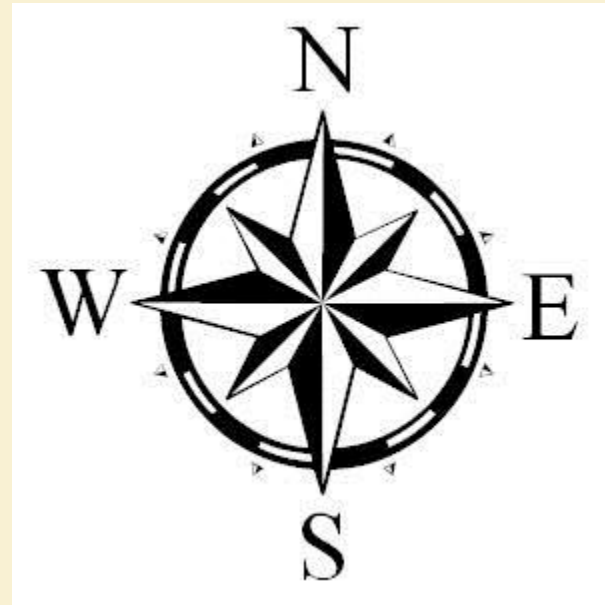
STAKE HOLDER PROFILES

- ❖ **OWNER: REAL-ESTATE DEVELOPER**
- ❖ **CLIENT: TEKNION FURNITURE**
- ❖ **USER: POTENTIAL CLIENTS OR EXISTING CLIENTS OF TEKNION, OTHER LARGE BUSINESSES IN GREENVILLE AND THOSE WHO WANT TO USE THE SPACE AS A COMMUNAL SPACE.**





SOUTH VIEW



NORTH VIEW



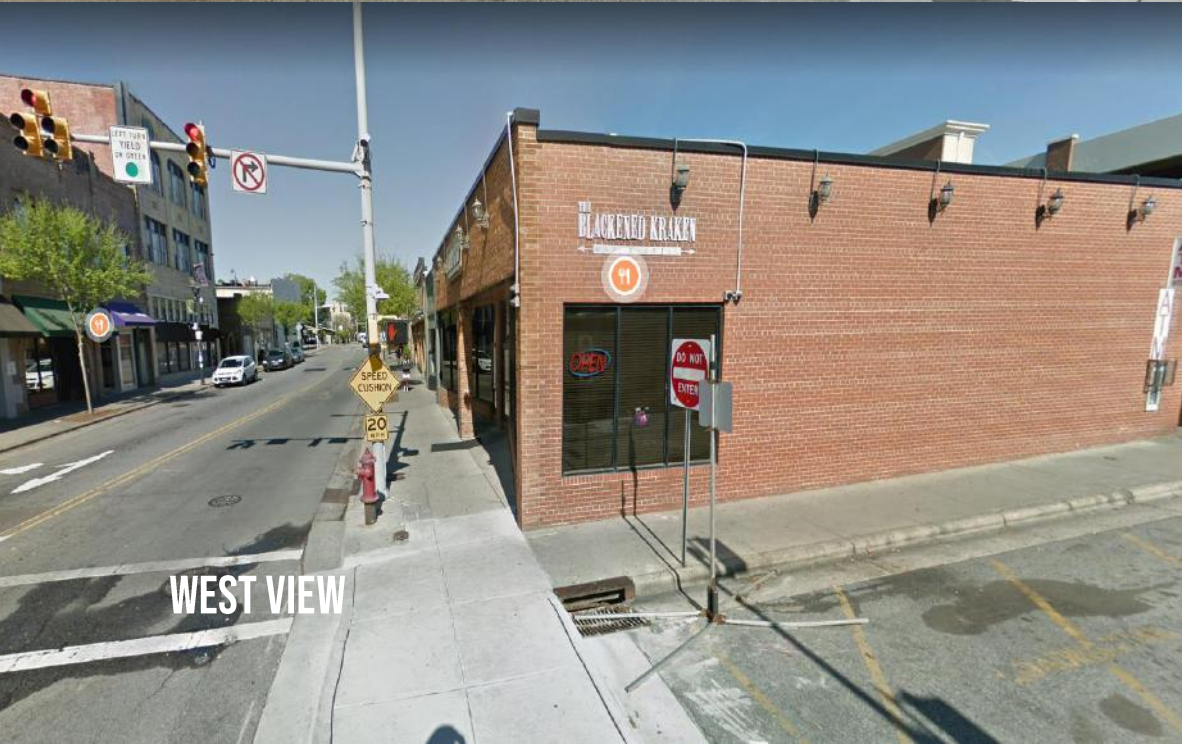
CORNER VIEW

SITE PROFILE

LOCATION: 5TH AND COTANCHE STREET IN UPTOWN GREENVILLE, NORTH CAROLINE



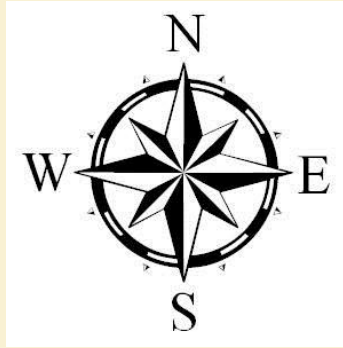
SIDE OF BUILDING



WEST VIEW



SATELLITE VIEW



SITE ANALYSIS

RED ARROW = ENTRANCE

YELLOW ARROW = SUNLIGHT



DESIGN PROBLEM STATEMENT

- ❖ **WAYFINDING: HOW TO MAKE THINGS OPEN AND HAVE FLUID MOVEMENTS WHEN ITS NOT A FULLY OPEN SPACE**
- ❖ **ADA COMPLIANCE**
- ❖ **DAYLIGHTING: HOW TO MAKE THE SPACE LOOK VERY BRIGHT WHEN DAYLIGHT MIGHT BE LIMITED BY OTHER BUILDINGS**
- ❖ **BE ABLE TO SELL FURNITURE WHILE ALSO BEING ABLE TO BE A COMMUNAL SPACE**
- ❖ **SOCIAL DISTANCING**
- ❖ **SUSTAINABILITY**

