



# Portfolio 1

---

Rebecca Hodges

IDSN 3102 001

Semester 1 Block 2



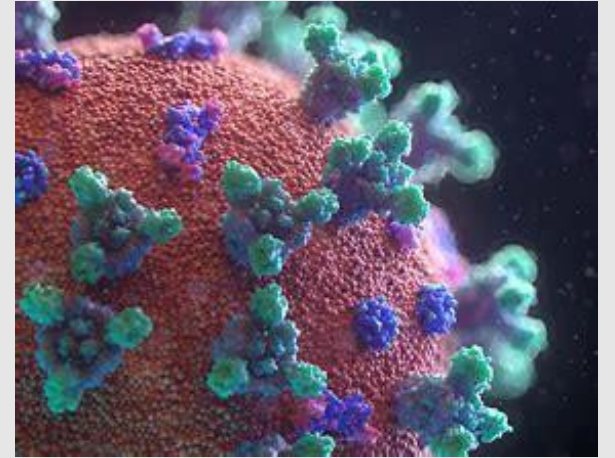
# Research

## Competition in the area

- 1 furniture store located in the downtown area is located on 5<sup>th</sup> street.
- 30 furniture stores total in the Greenville, NC area.

## Health Precautions Due to Covid

- Face covering signs.
- Required 6 ft distance maintained.
- Limit of 75 customers in the store to allow numbers in total to stay under the required capacity.
- Hand sanitizer stations at entrance, checkout, and desks.
- Tables 6 ft apart where drinks can be given.



teknion



# Stakeholder Profiles

## Owner

- Current owner is a Real-estate Developer.
- Is bringing in a new company to make profit out of the space.

## Client

- Teknion.
- The company is branching out in order to make money on their furniture and make a new client base.

## Users

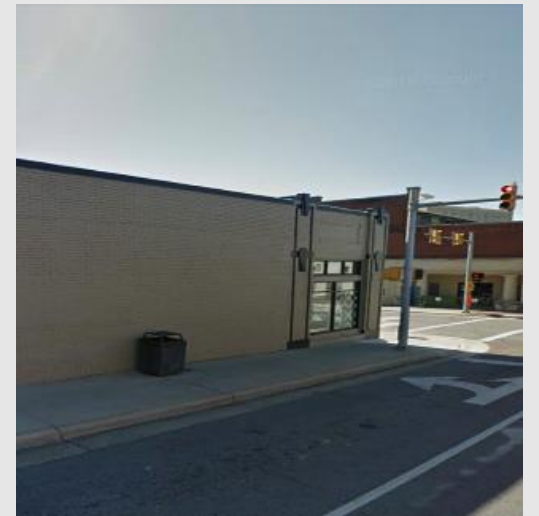
- ECU Students.
- Interior Designers.
- Large Businesses.
- New and Old Clients.



# Site Profiles

## Location

- The intersection of East 5<sup>th</sup> and Cotache Street in the Downtown area of Greenville, NC.



# Site Analysis



# Design Problem Statement

## Cohesiveness with Social Distancing

The small space makes social distancing and furniture display difficult.

## Level the store

- Front of store and Back of alley to not match heights.



# Citation

[https://www.yellowpages.com/search?search terms=furniture-store&geo location terms=greenville-nc](https://www.yellowpages.com/search?search%20terms=furniture-store&geo%20location%20terms=greenville-nc)

<https://www.nc.gov/covid-19/covid-19-orders>

<https://www.bing.com/images/search?view=detailV2&ccid=w398iTTI&id=4A38F2616B3E7AA490B735A2A87DB0DCBBE122B3&thid=OIP.w398iTTIs3sbb5PxMvOEJgHaDt&mediurl=http%3a%2f%2fstatelibrarync.org%2fldblog%2fwp-content%2fuploads%2f2015%2f02%2fecu.png&exph=531&expw=1058&q=+ecu&simid=608044644944774769&ck=23561339E2720CE8365CD9EA748AB430&selectedIndex=65&FORM=IRPRST&ajaxhist=0>

<https://www.bing.com/images/search?view=detailV2&ccid=oPkzhwkY&id=006AF0D8D868A9D1CC6BC5EDAEAFF179479DA0BD&thid=OIP.oPkzhwkY4VLMwFhU3BExlgHaEK&mediurl=https%3a%2f%2fwww.tn.gov%2fcontent%2fdam%2ftn%2fecd%2fimages%2fcovid19-medical-animation.jpg&exph=2250&expw=4000&q=covid&simid=608001270124842368&ck=F8DE0C2A3B02F0D4120584930580CCEE&selectedIndex=2&FORM=IRPRST&ajaxhist=0>

<https://www.bing.com/images/search?q=teknion&form=HDRSC3&first=1&scenario=ImageBasicHover>

<https://www.bing.com/images/search?view=detailV2&ccid=rsgvJUjA&id=191A4E70783B643164188B90769F5AE82521303C&thid=OIP.rsgvJUjAGlkIDMnUqGeAOQHaDF&mediurl=https%3a%2f%2ffmlink.com%2fwp-content%2fuploads%2f2017%2f07%2fTeknion-e1501336693344.jpg&exph=335&expw=803&q=teknion&simid=607999354559531524&ck=17C36860D2321F03E3FB755152D73D29&selectedIndex=34&FORM=IRPRST&ajaxhist=0>

[https://www.bing.com/images/search?view=detailV2&ccid=7Xwj9hh&id=794187EB8D2A49EB8F8F9A01563AE939DD9E188F&thid=OIP.7Xwj9hh0ErfU-aOXtcZXQHaBn&mediurl=https%3a%2f%2fifma-chicago.starchapter.com%2fimages%2fTeknion\\_Logo\\_2015.jpg&exph=210&expw=960&q=teknion+logo&simid=608041063018267348&ck=0222470A85D6175BD12851F27B4C10BB&selectedIndex=0&FORM=IRPRST&ajaxhist=0](https://www.bing.com/images/search?view=detailV2&ccid=7Xwj9hh&id=794187EB8D2A49EB8F8F9A01563AE939DD9E188F&thid=OIP.7Xwj9hh0ErfU-aOXtcZXQHaBn&mediurl=https%3a%2f%2fifma-chicago.starchapter.com%2fimages%2fTeknion_Logo_2015.jpg&exph=210&expw=960&q=teknion+logo&simid=608041063018267348&ck=0222470A85D6175BD12851F27B4C10BB&selectedIndex=0&FORM=IRPRST&ajaxhist=0)

<https://www.bing.com/images/search?q=ramp%20in%20store&qsn&form=QBIRMH&sp=-1&pq=ramp%20in%20store&sc=3-13&cvid=8756BACCE76A486FAD540F092CDBCAE9&first=1&scenario=ImageBasicHover>