

Teknion Design Challenge

Portfolio 2

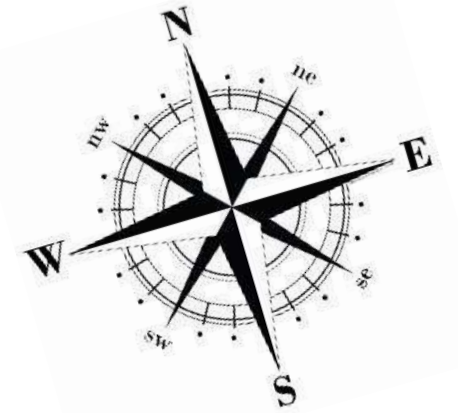
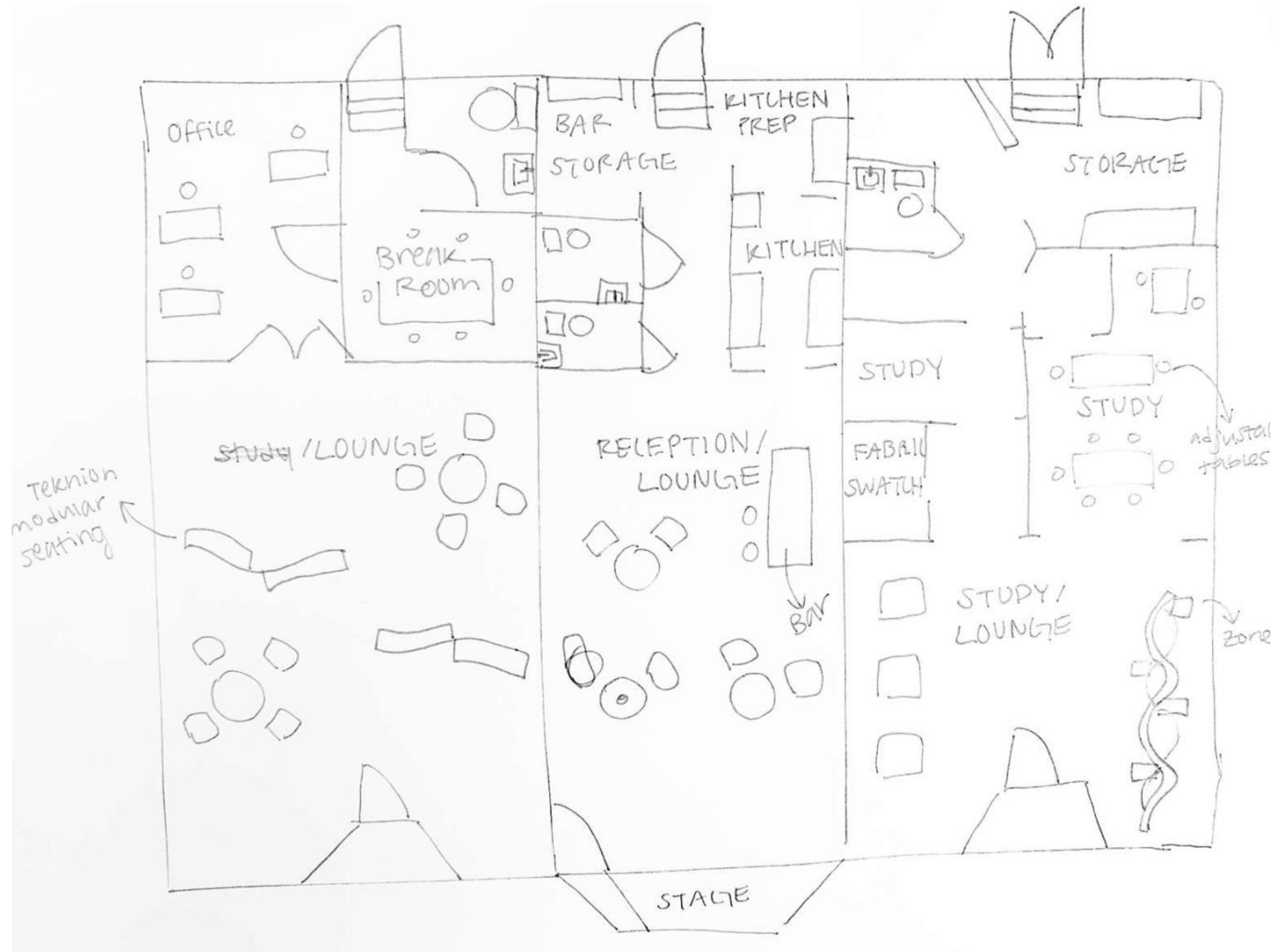
IDSN Studio 3102

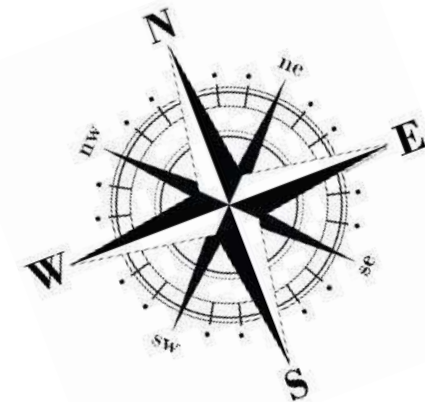
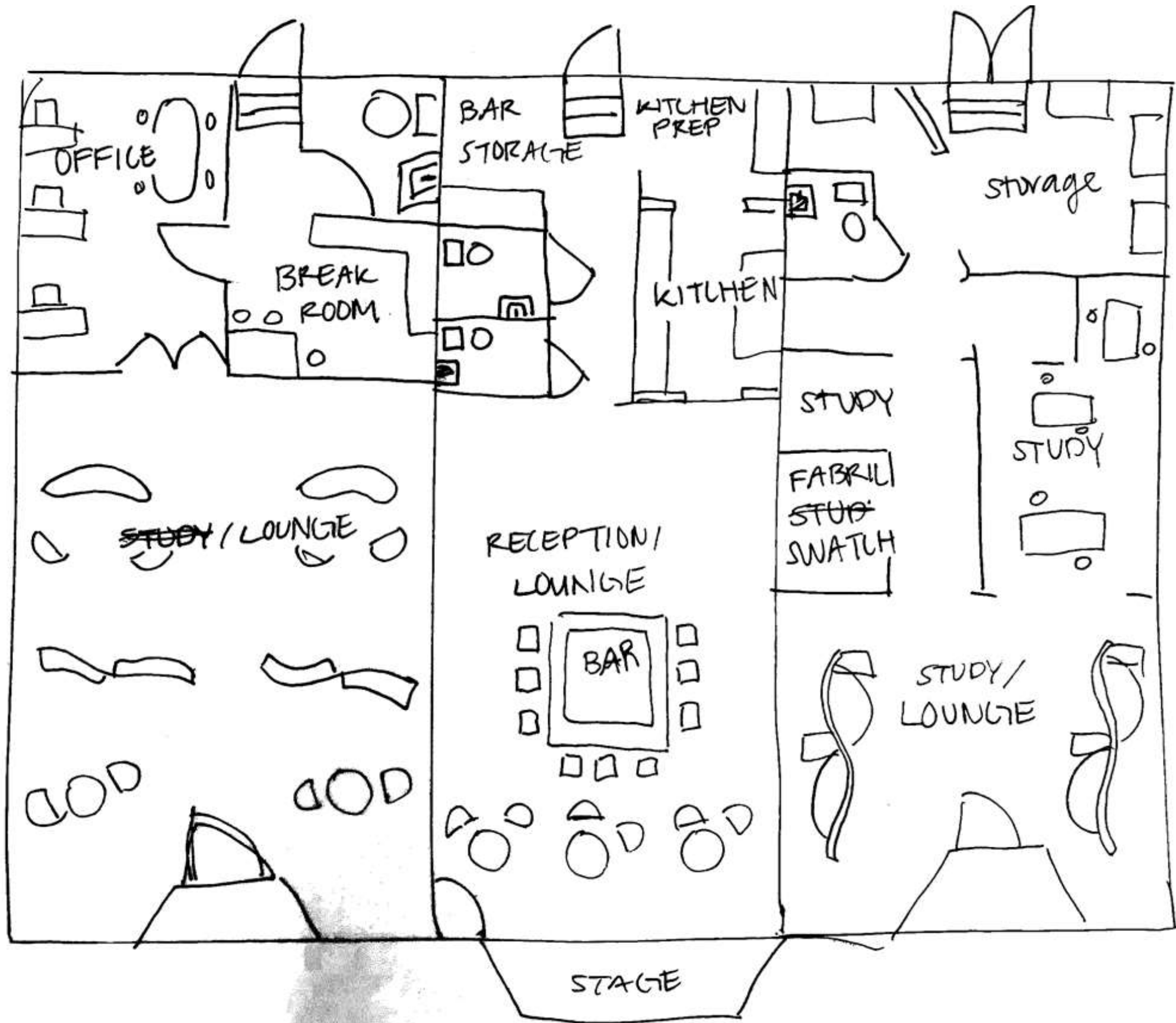
Fall Semester 2020

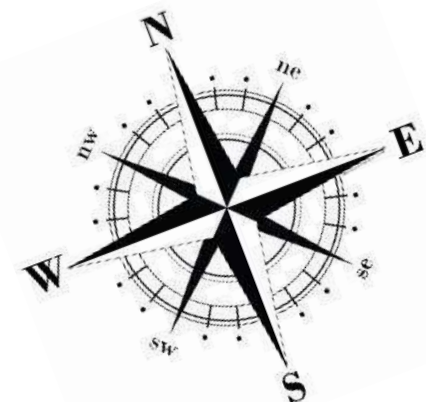
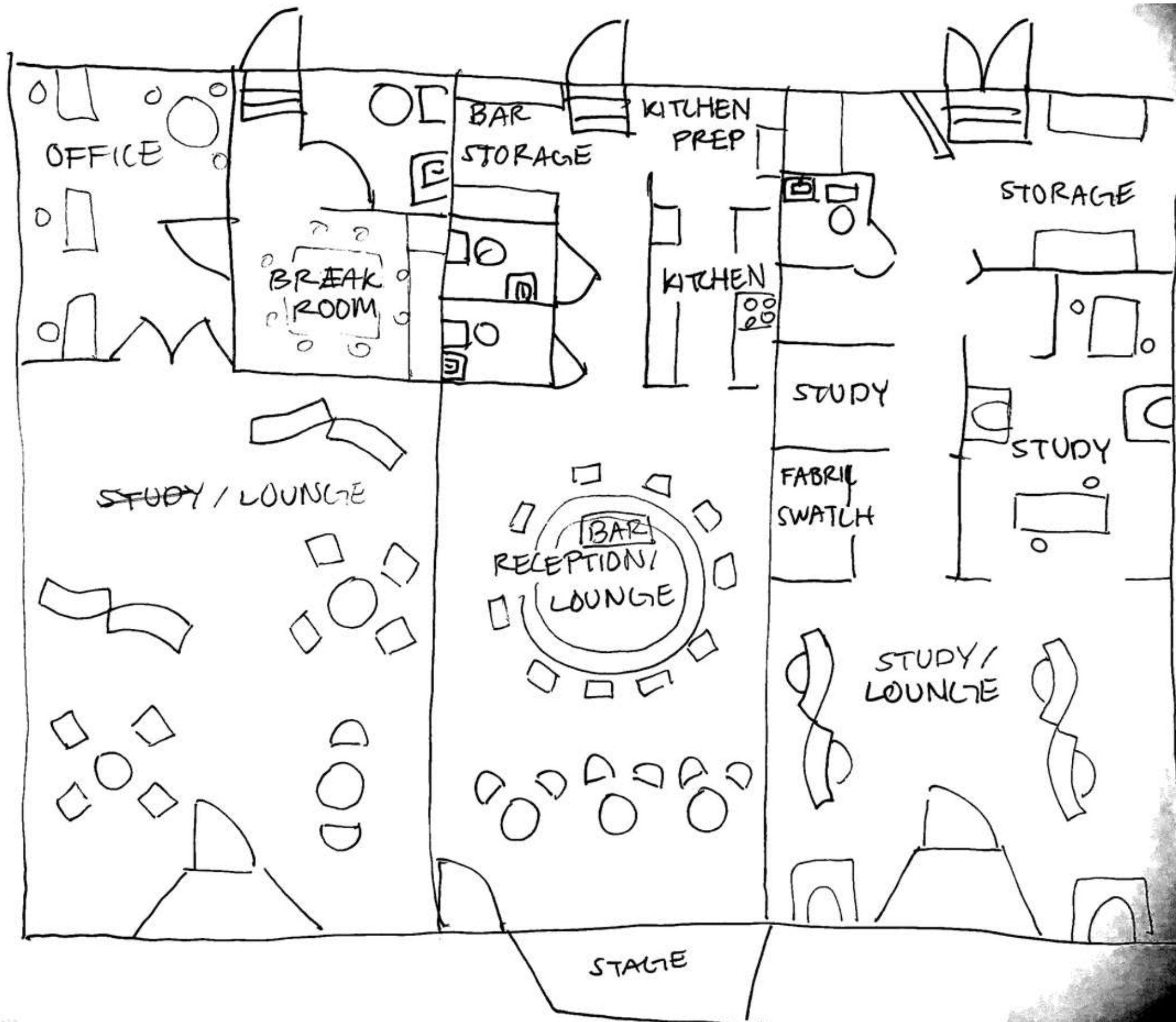
Anna Overton



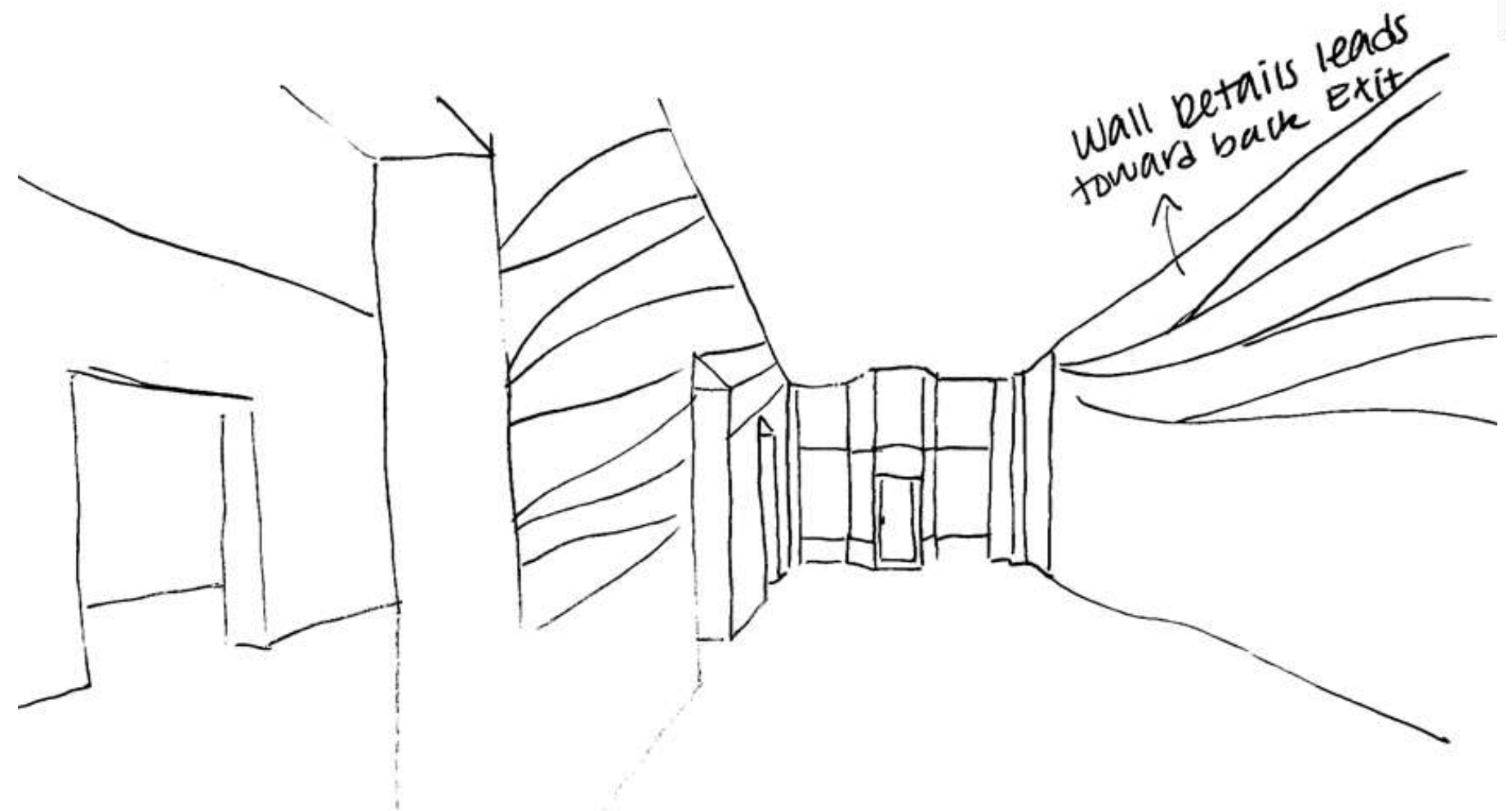
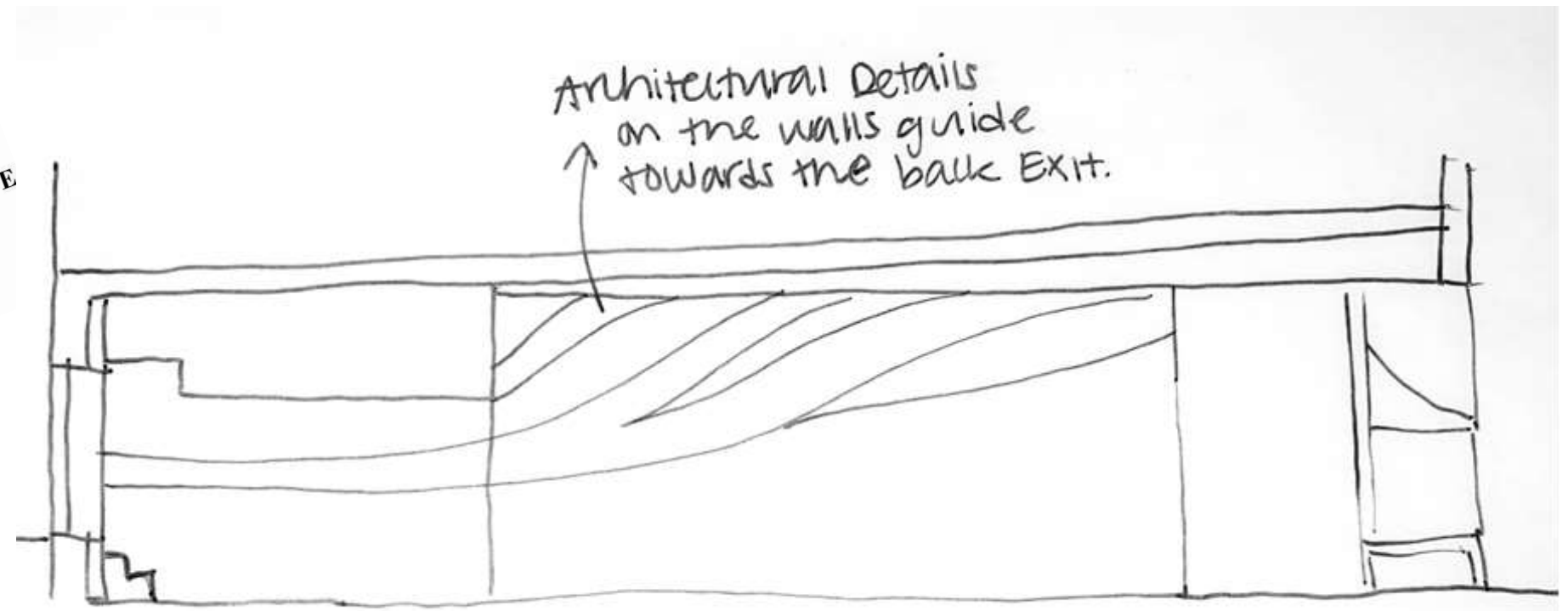
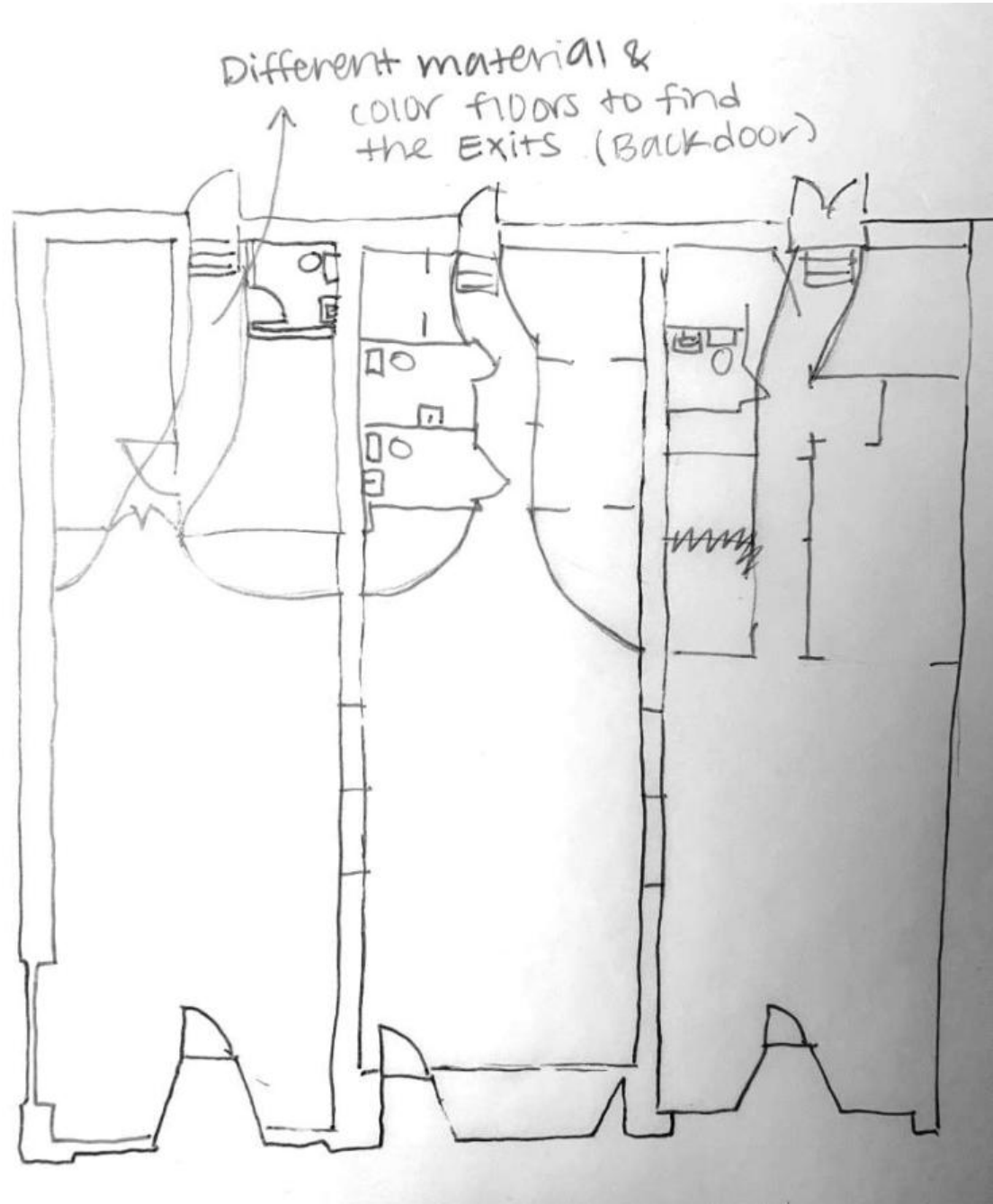
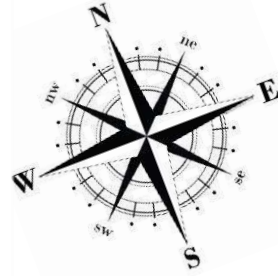
Space Plan Sketches





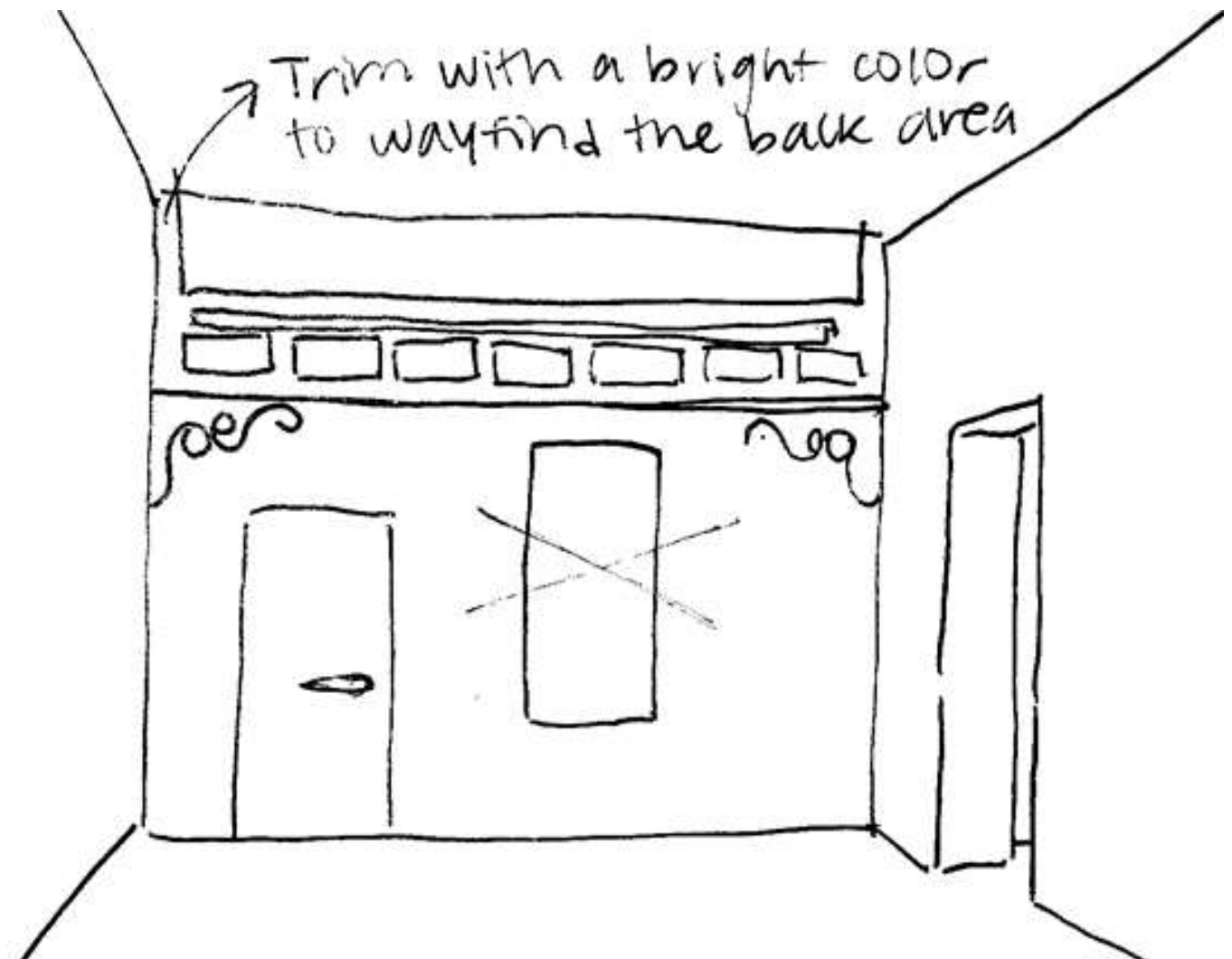
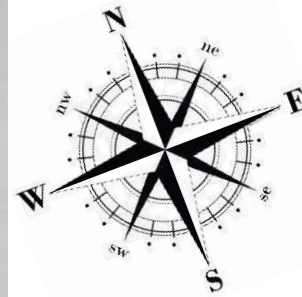
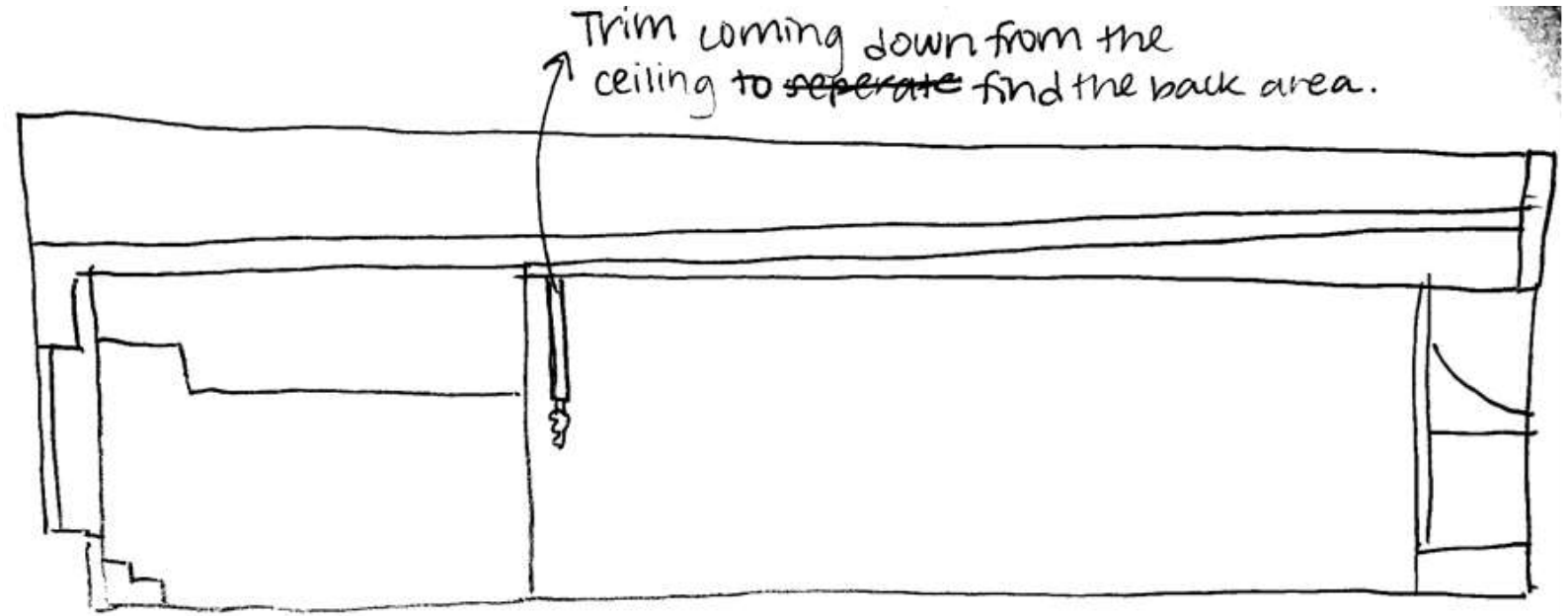
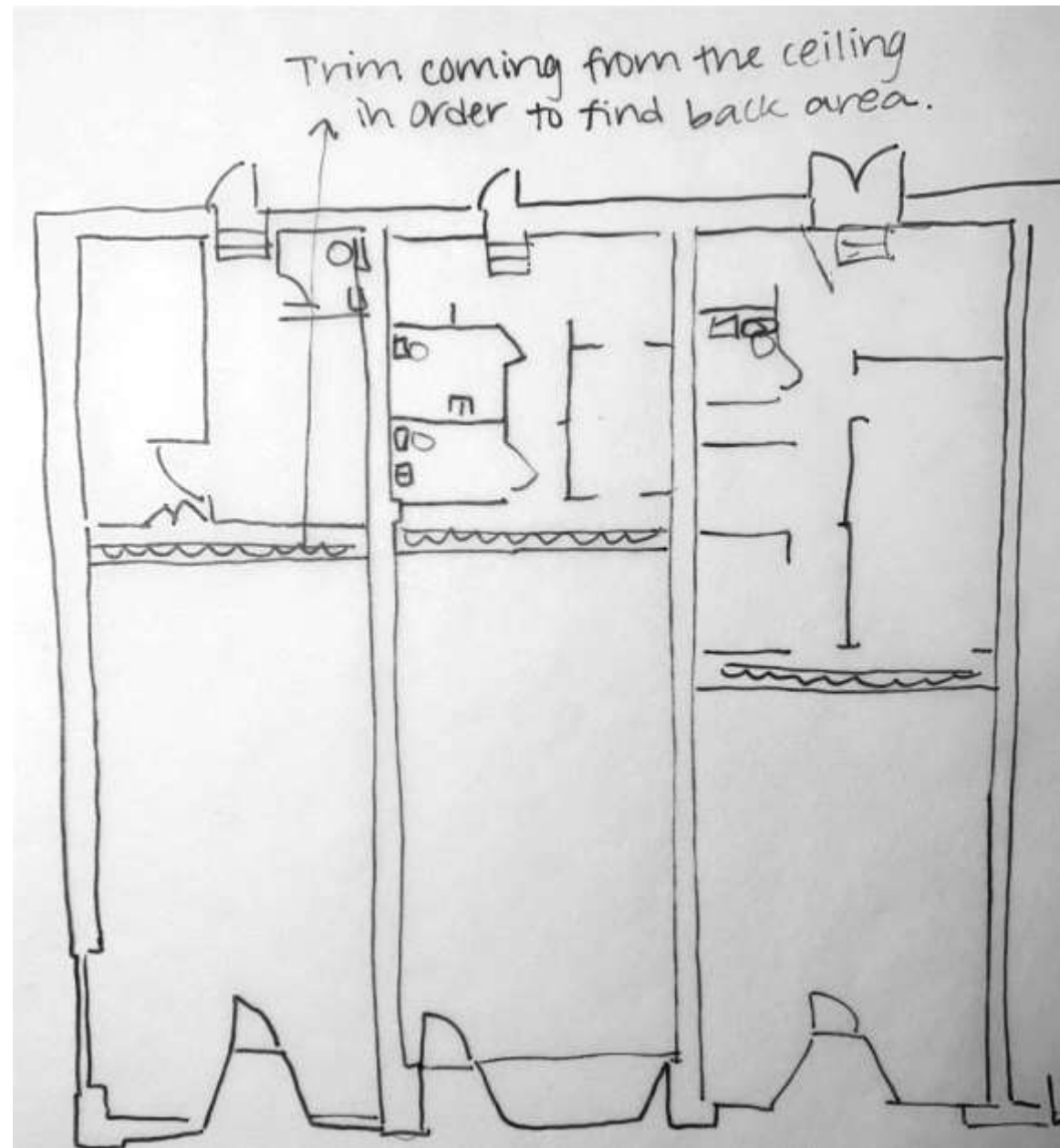


Problem Resolution Sketches Wayfinding



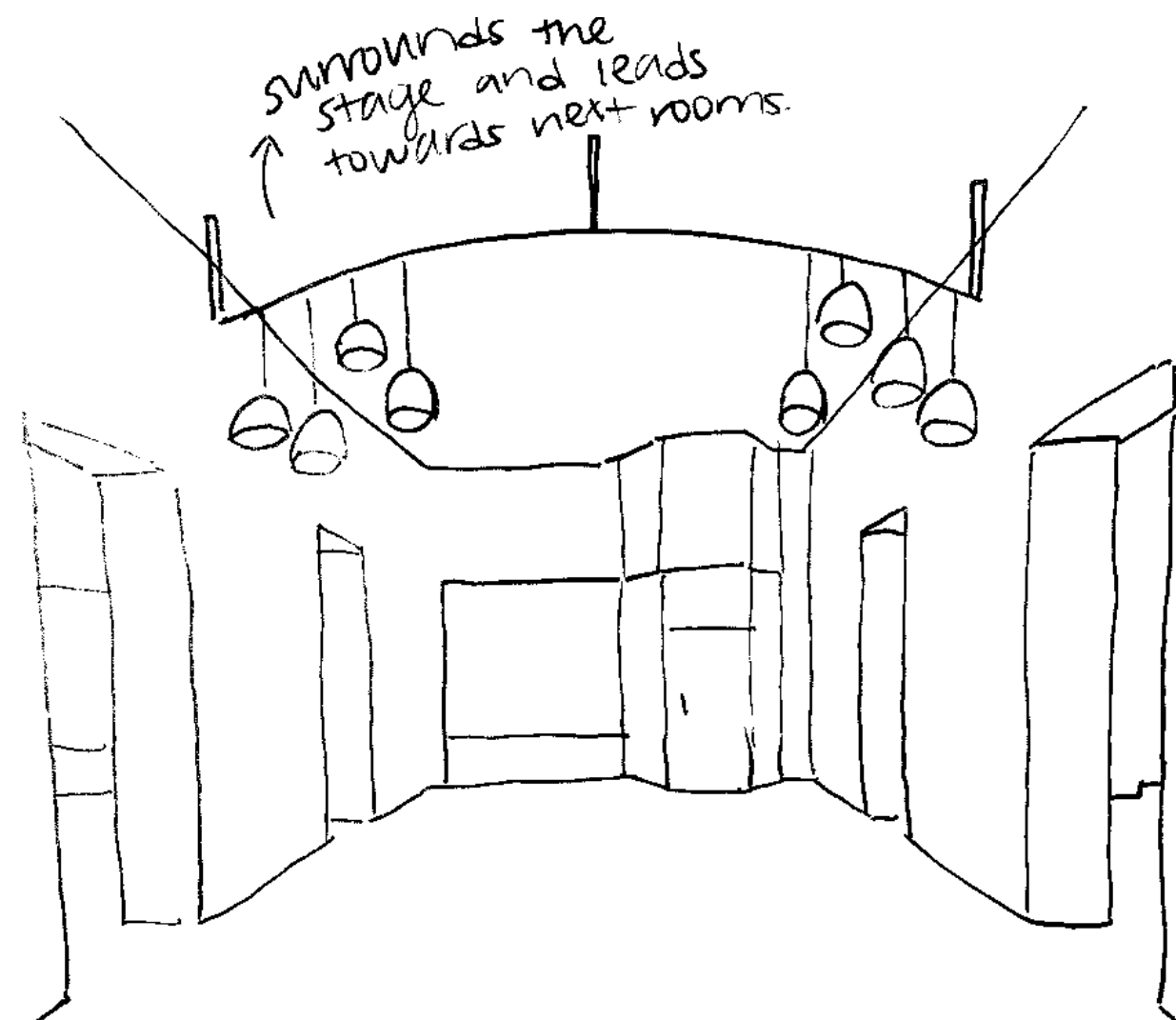
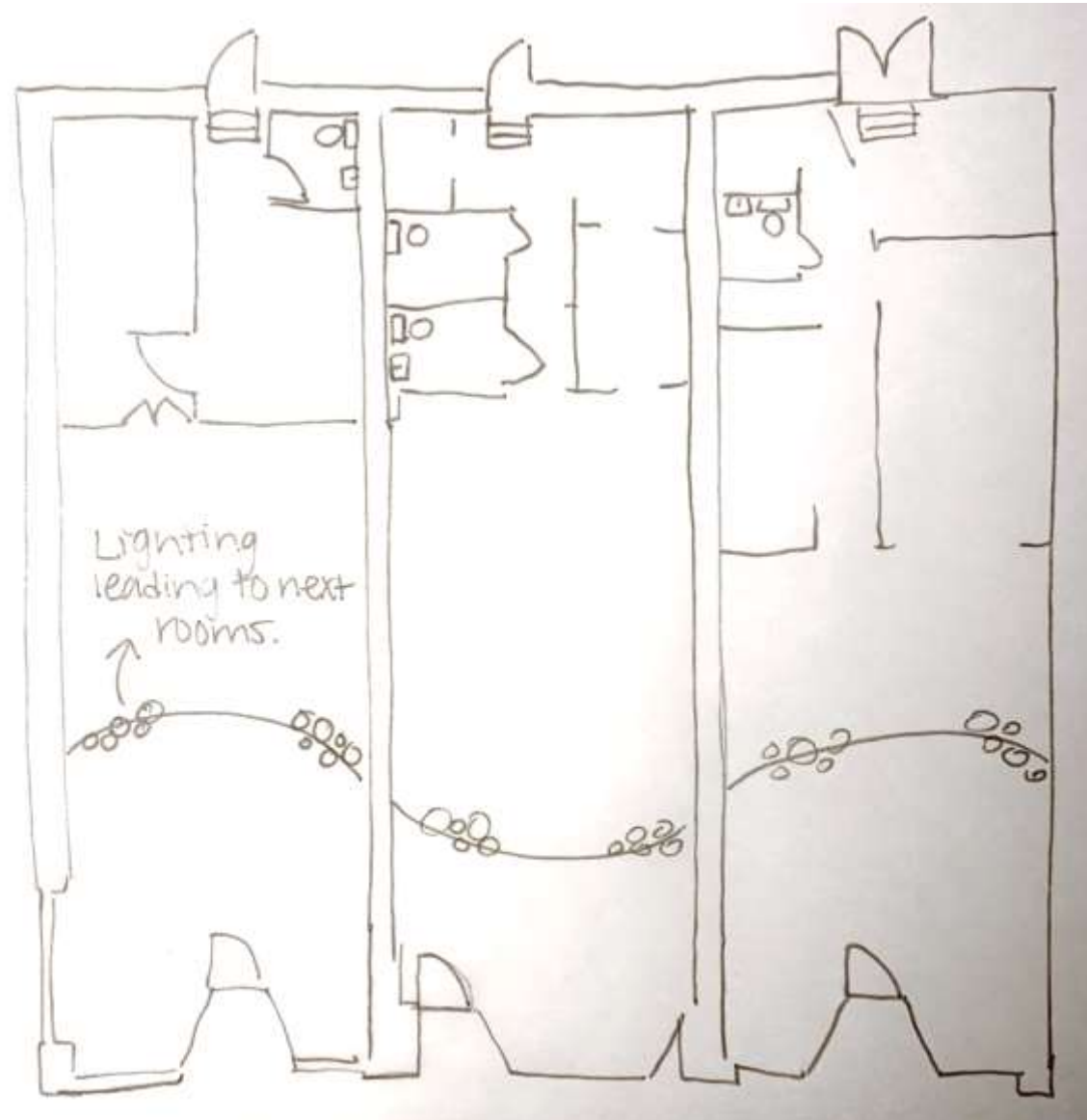
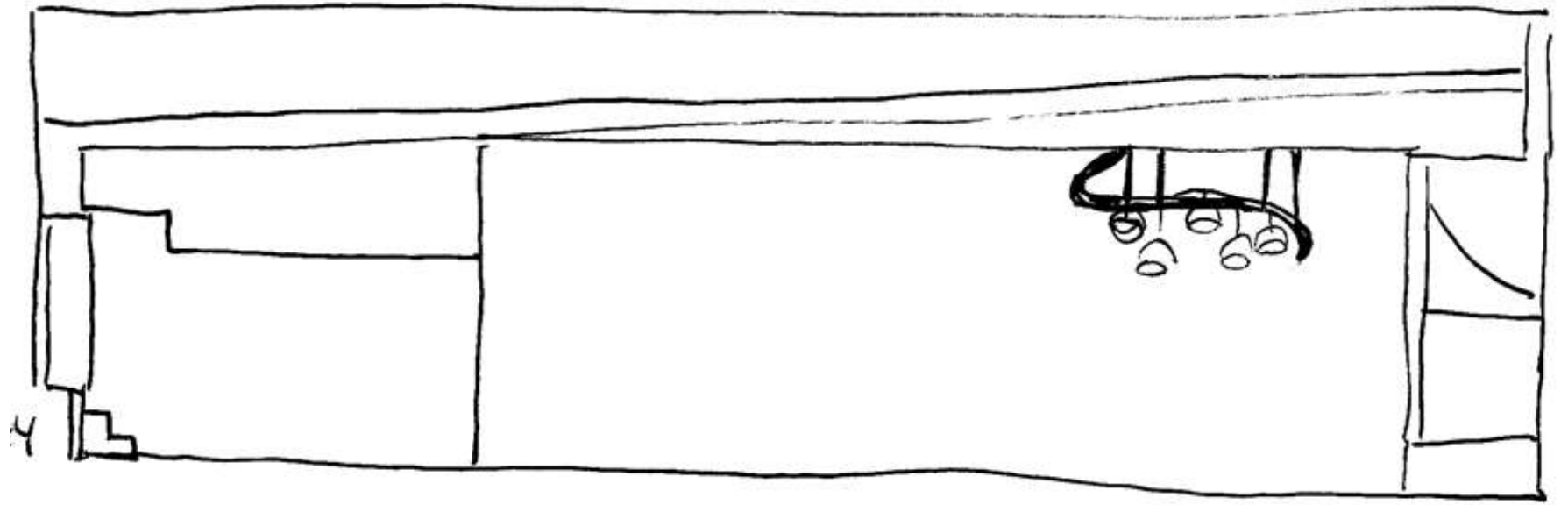
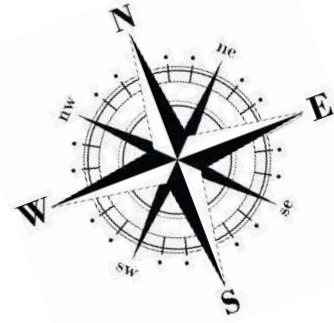
Problem Resolution Sketches

Wayfinding 2nd solution



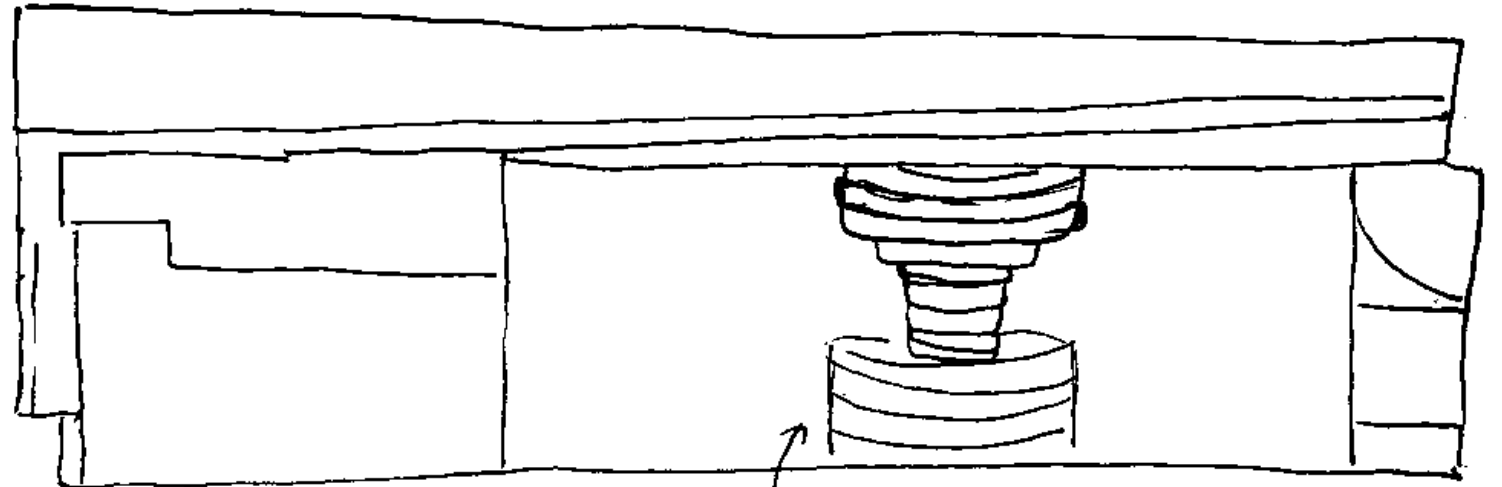
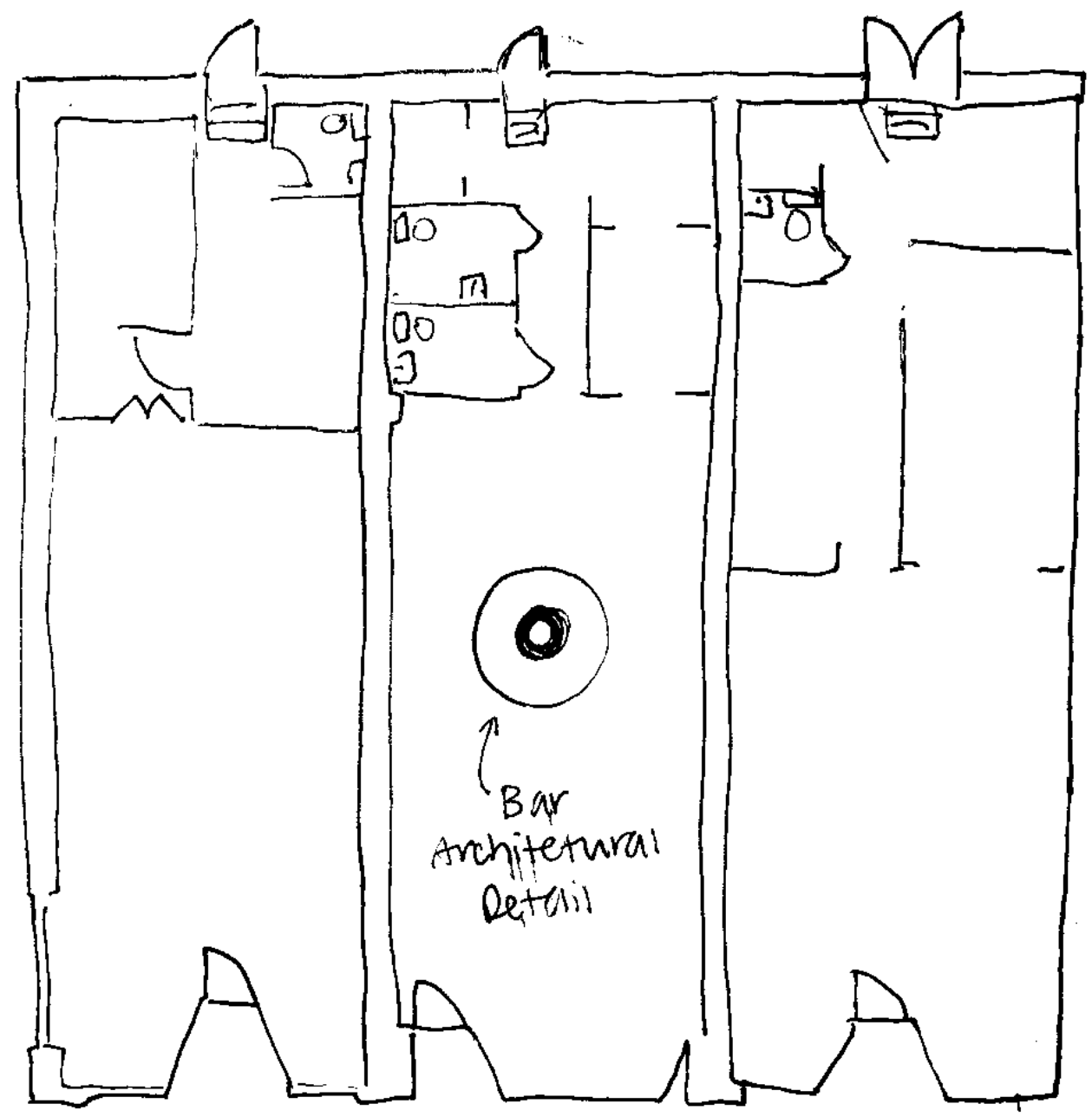
Problem Resolution Sketches

Entry

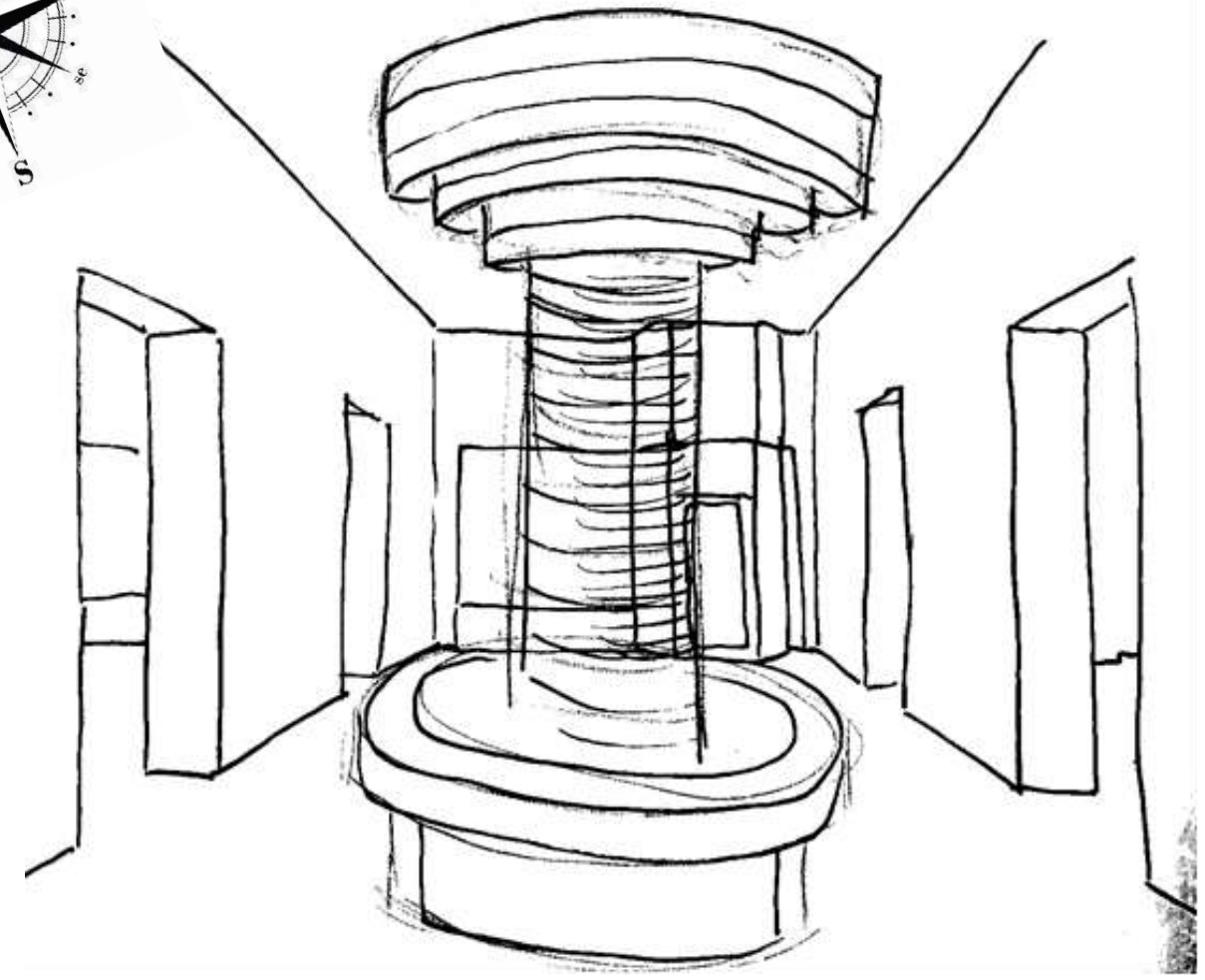


Problem Resolution Sketches

Entry

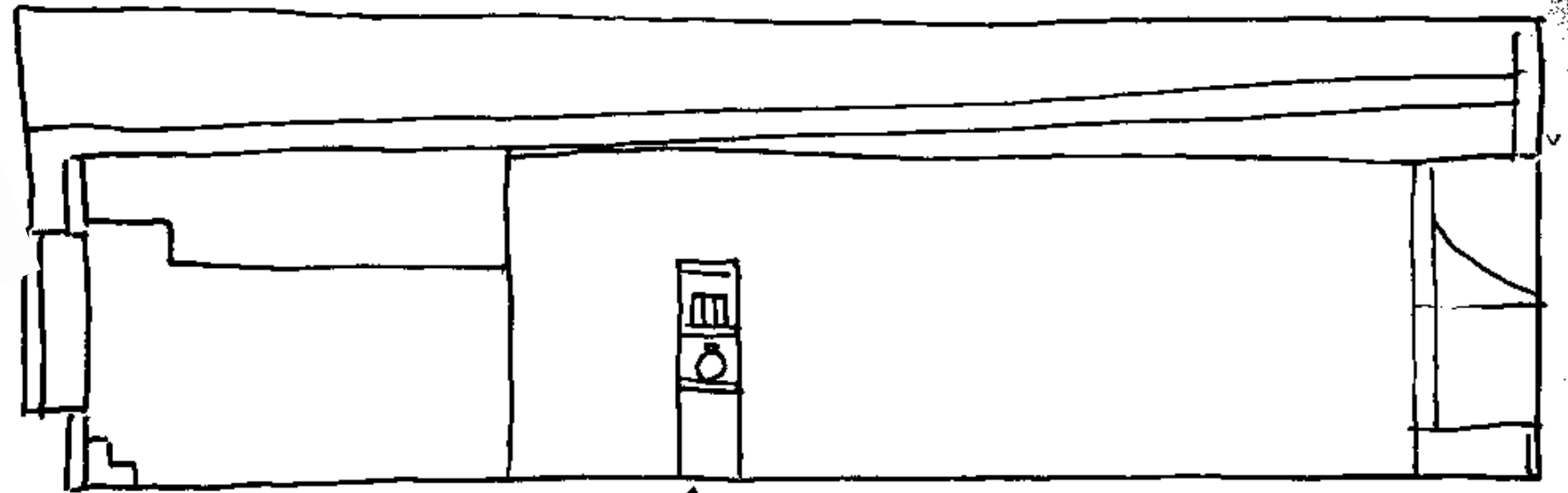
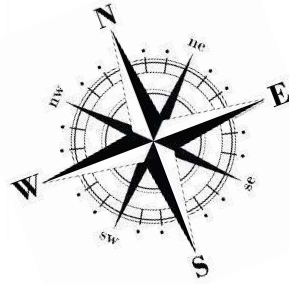


center of the space,
Draws people over to bar

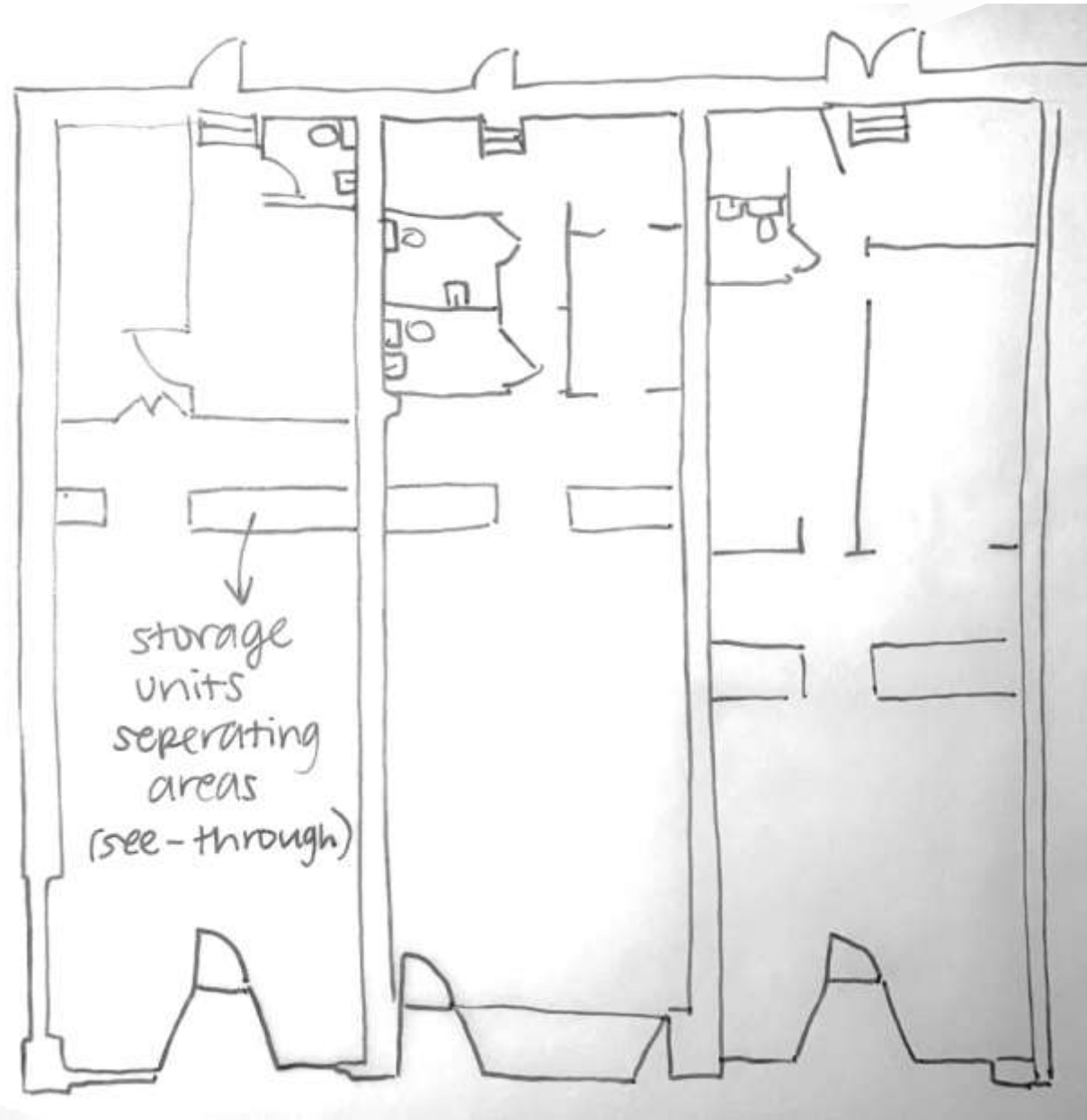
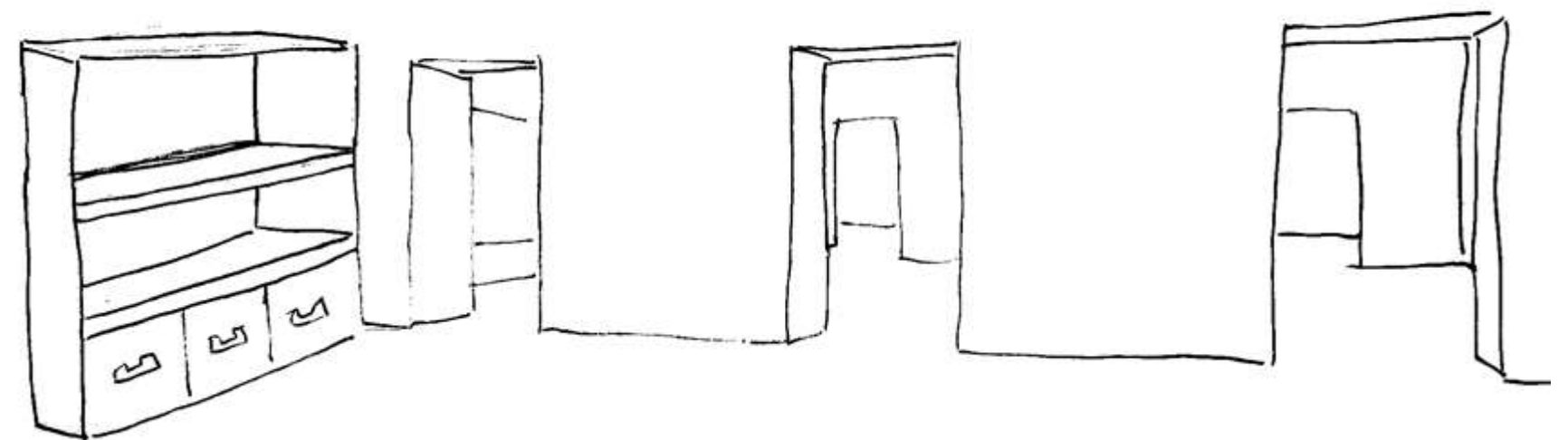


Problem Resolution Sketches

Enclosed Volumes



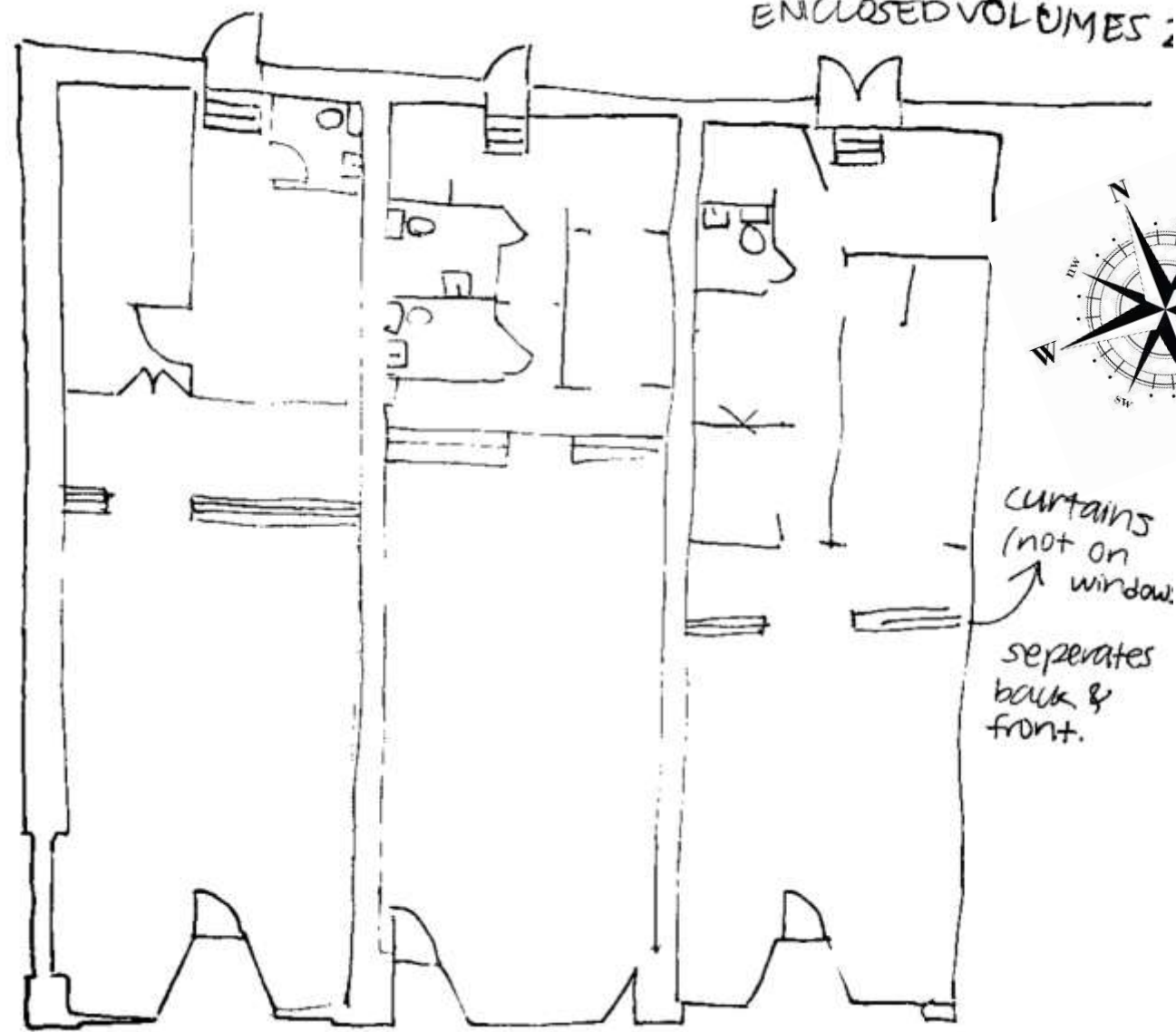
party see-through
to look more spacious



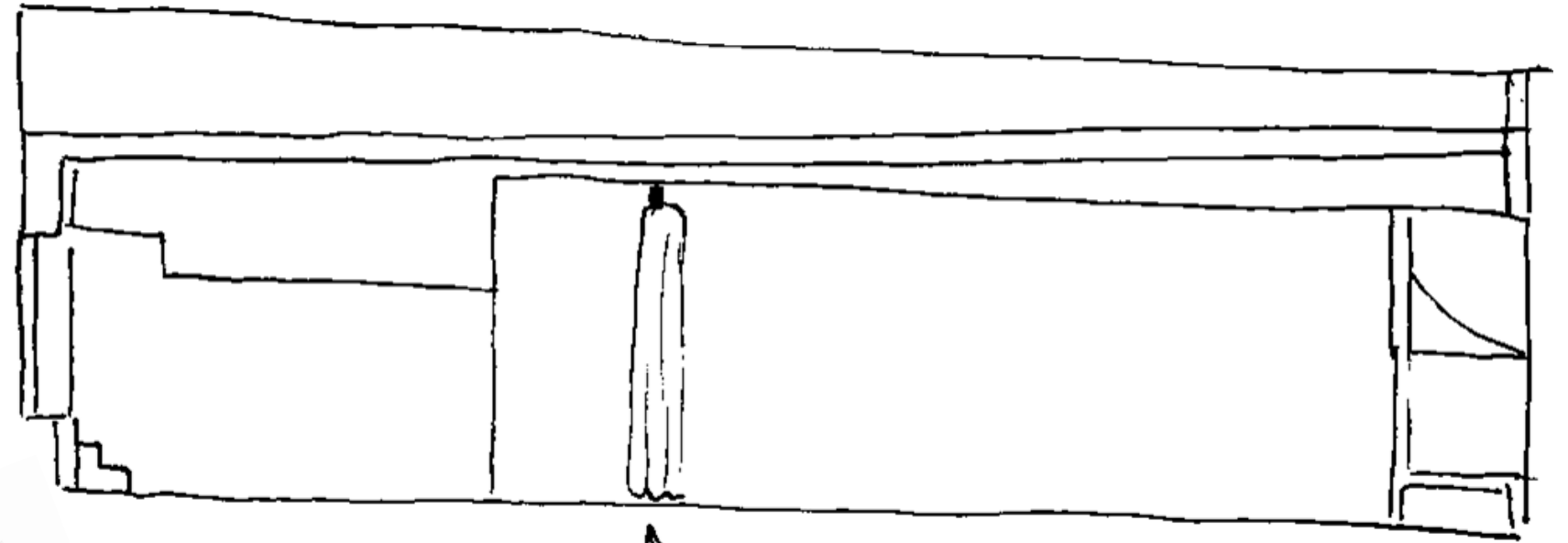
storage
units
seperating
areas
(see-through)

Problem Resolution Sketches

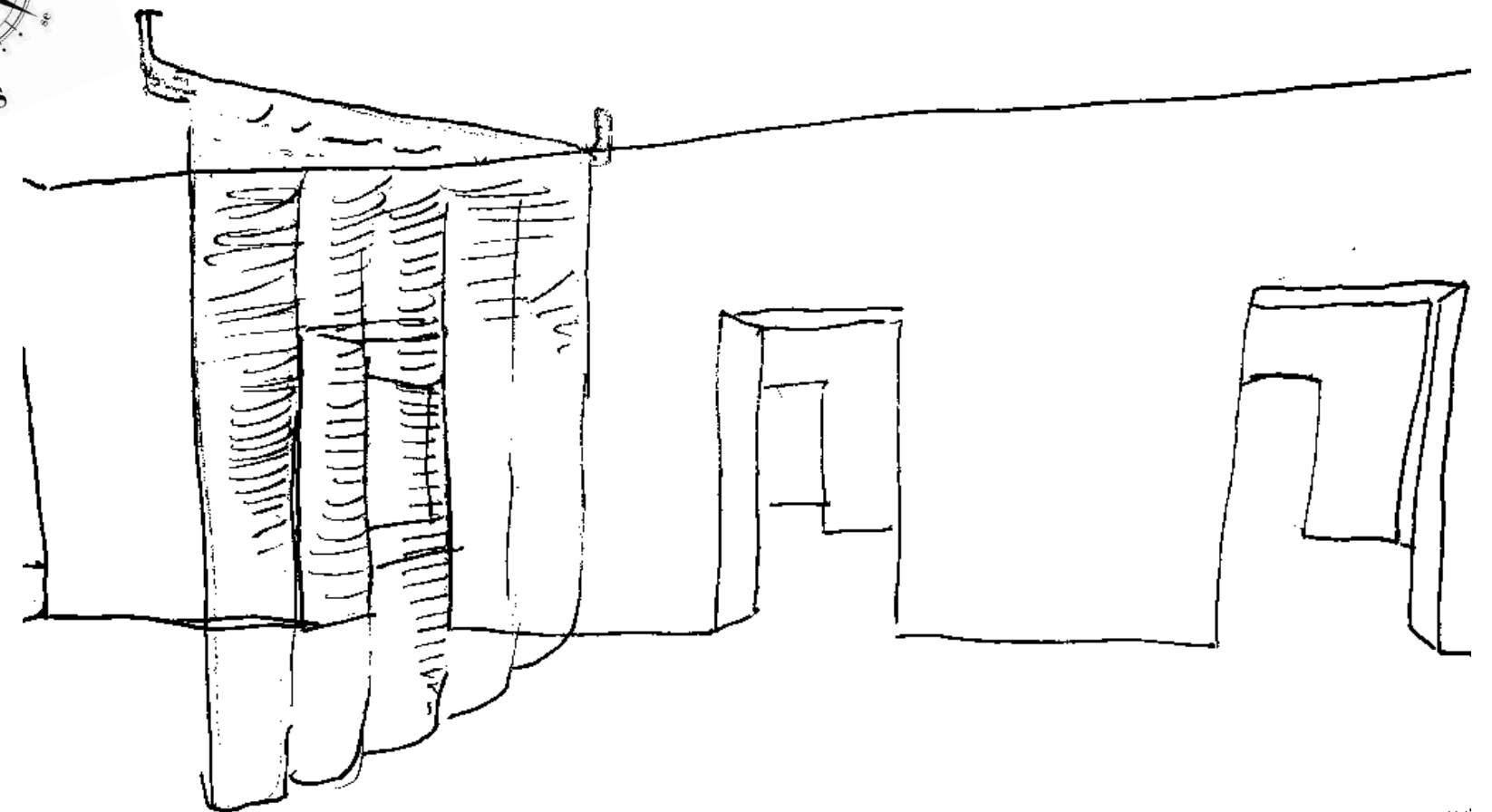
Enclosed Volumes



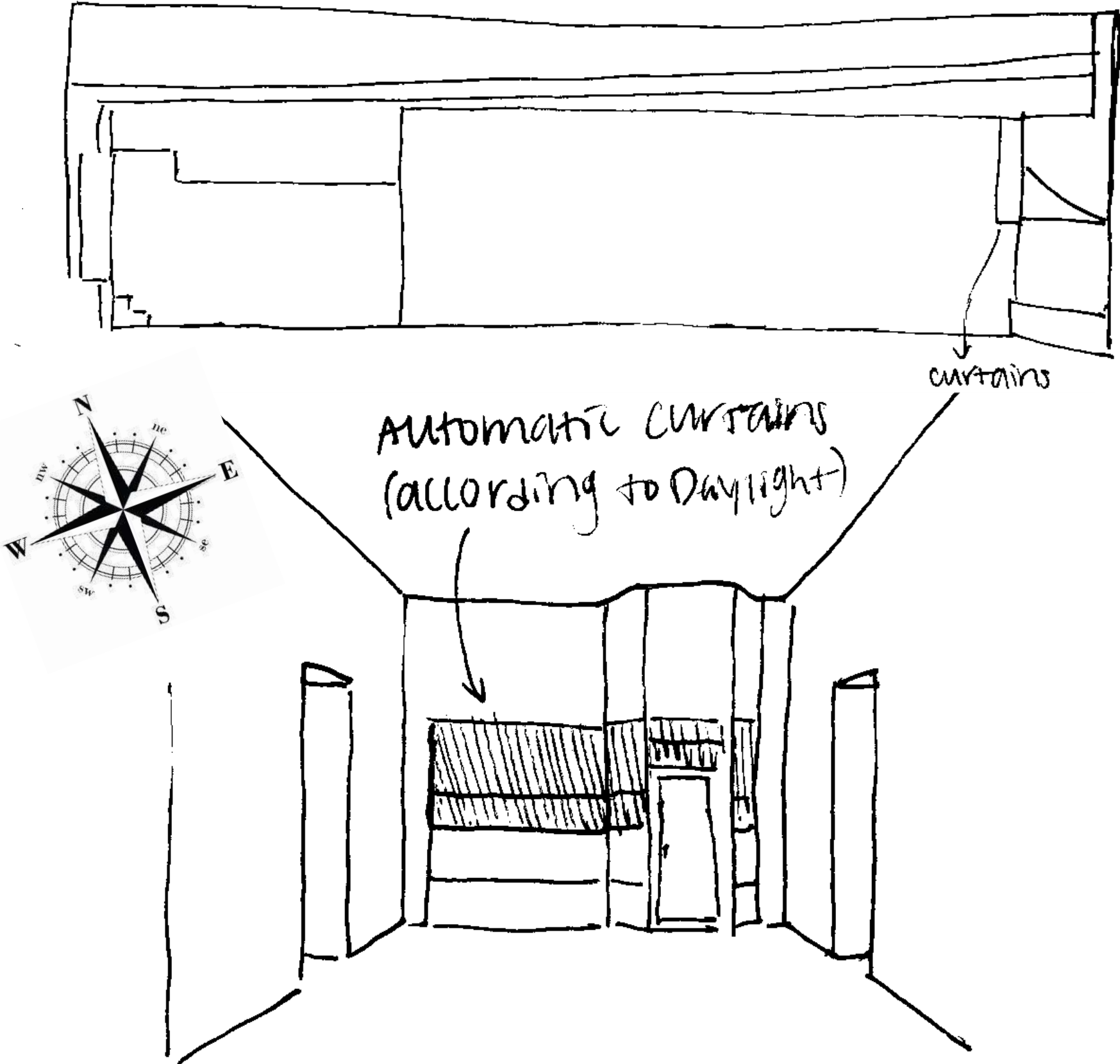
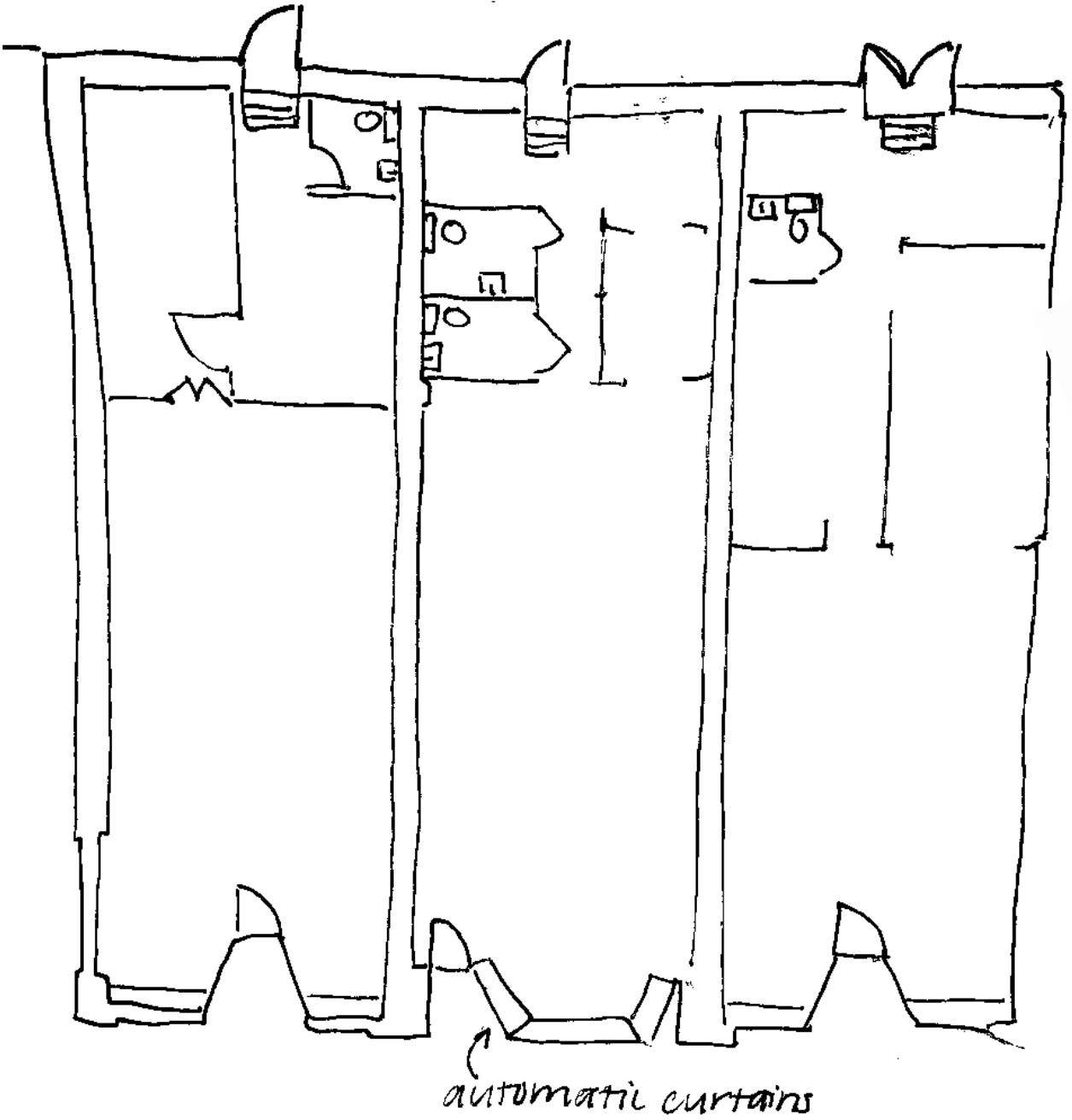
ENCLOSED VOLUMES 2



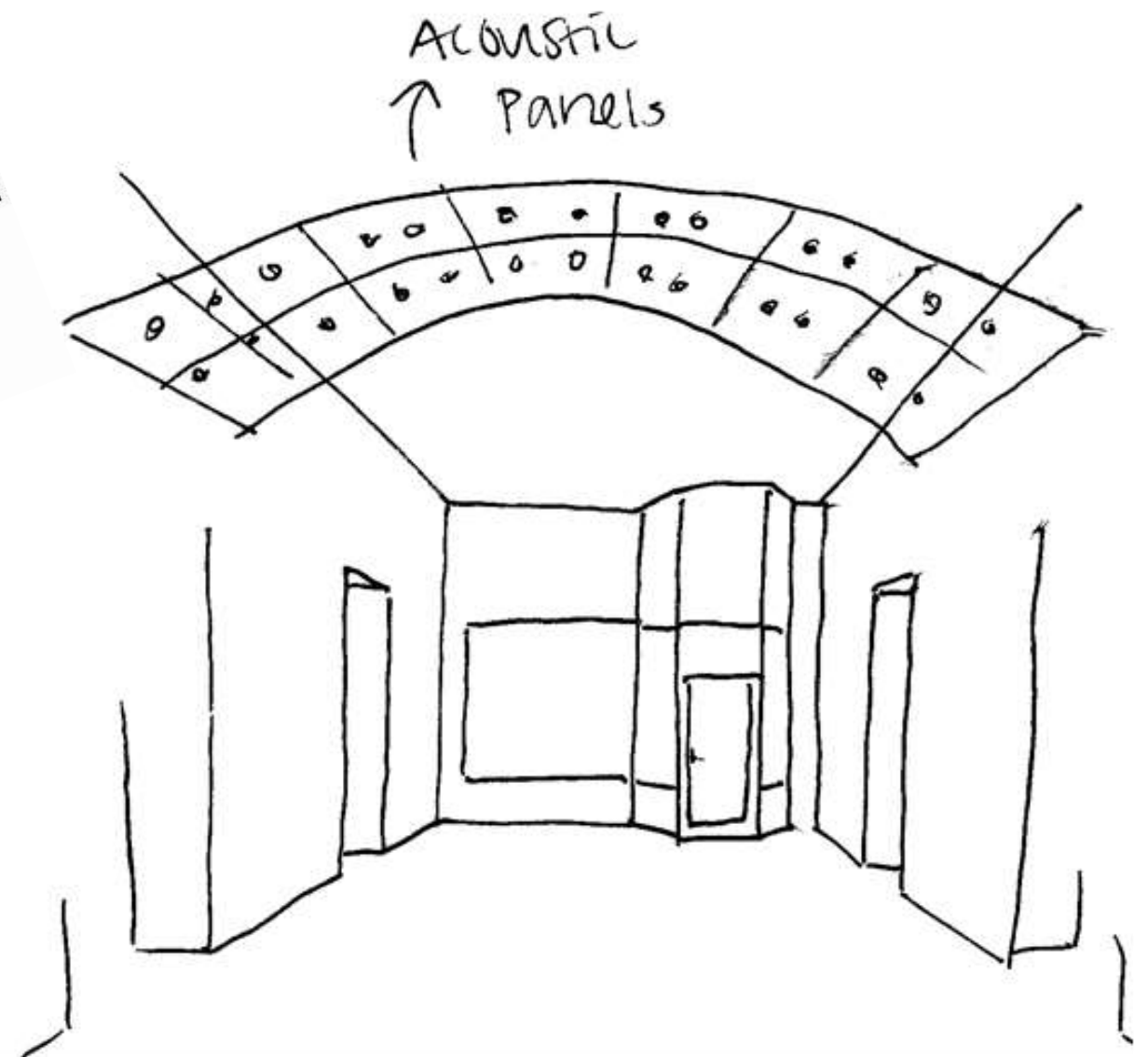
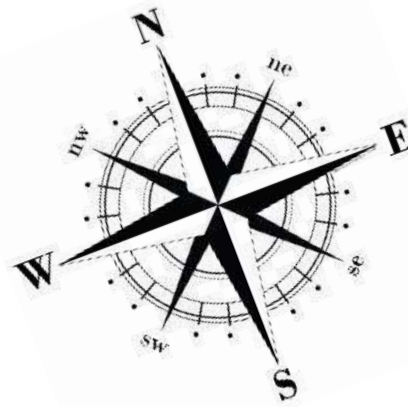
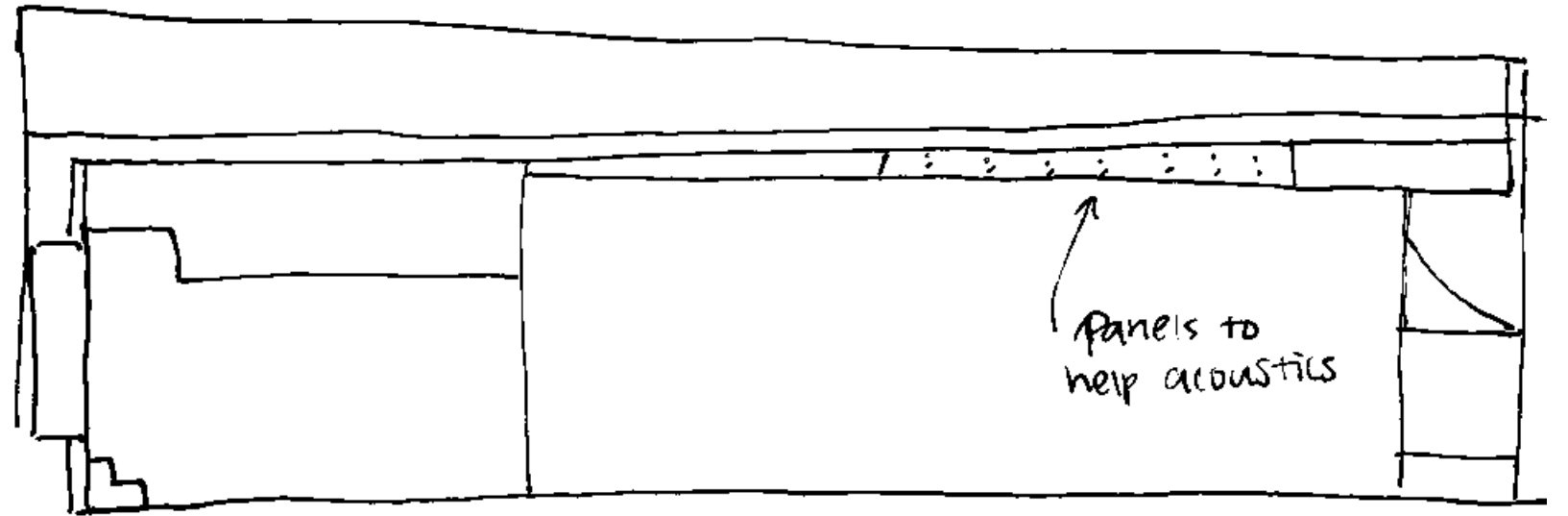
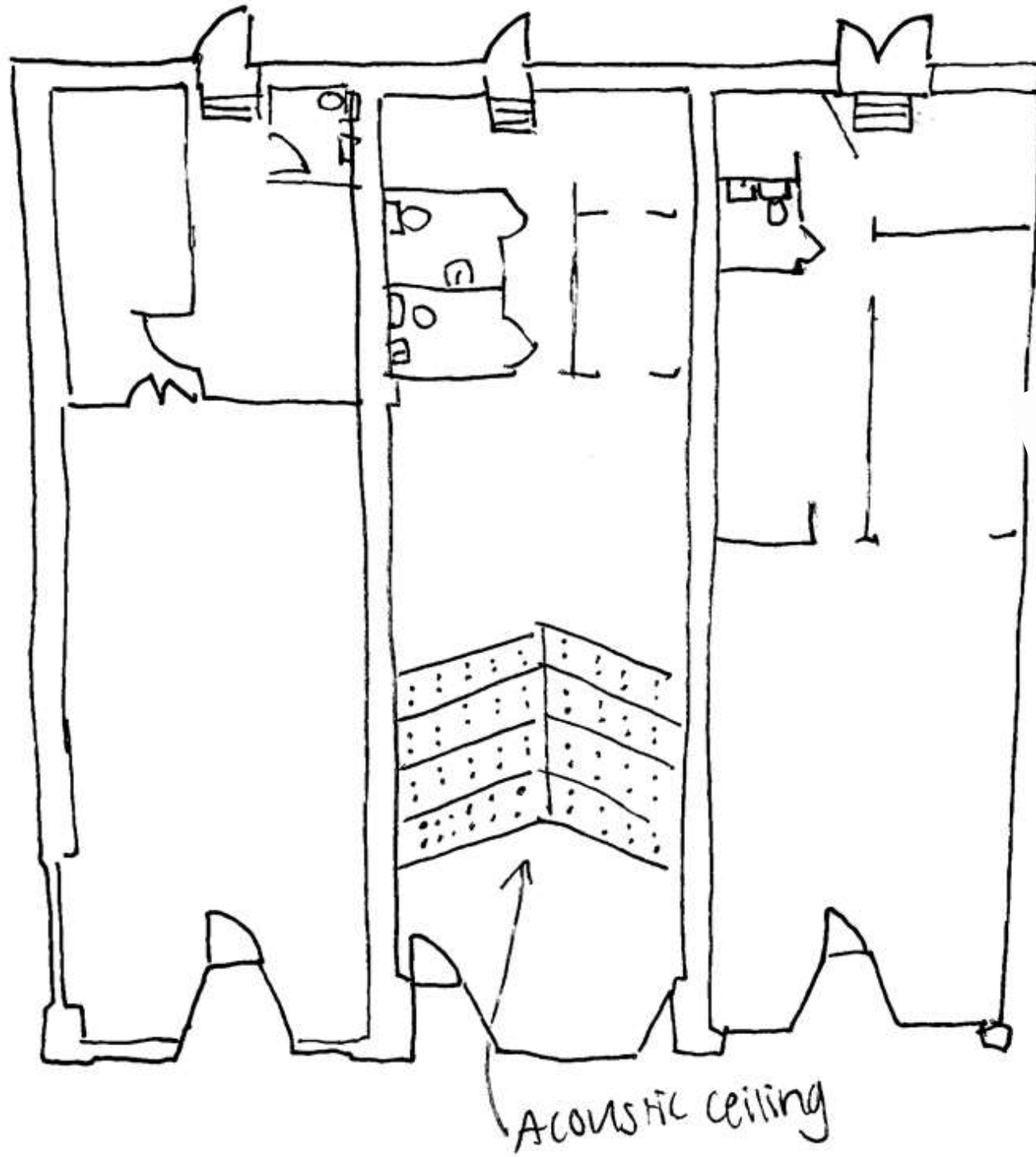
curtains absorb sound



Problem Resolution Daylighting



Problem Resolution Ceiling



Option 1



Option 2

