

# Portfolio 2

Fall IDSN 3102

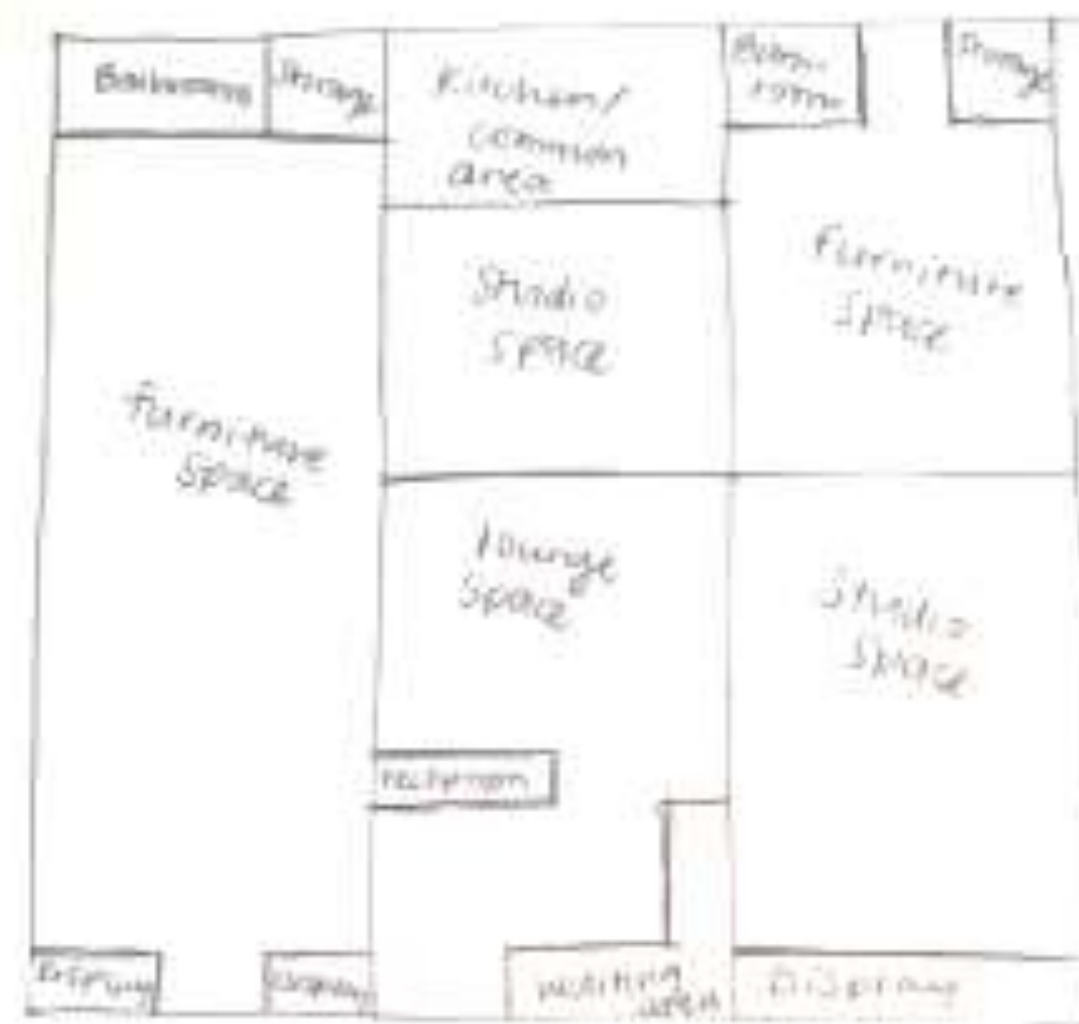
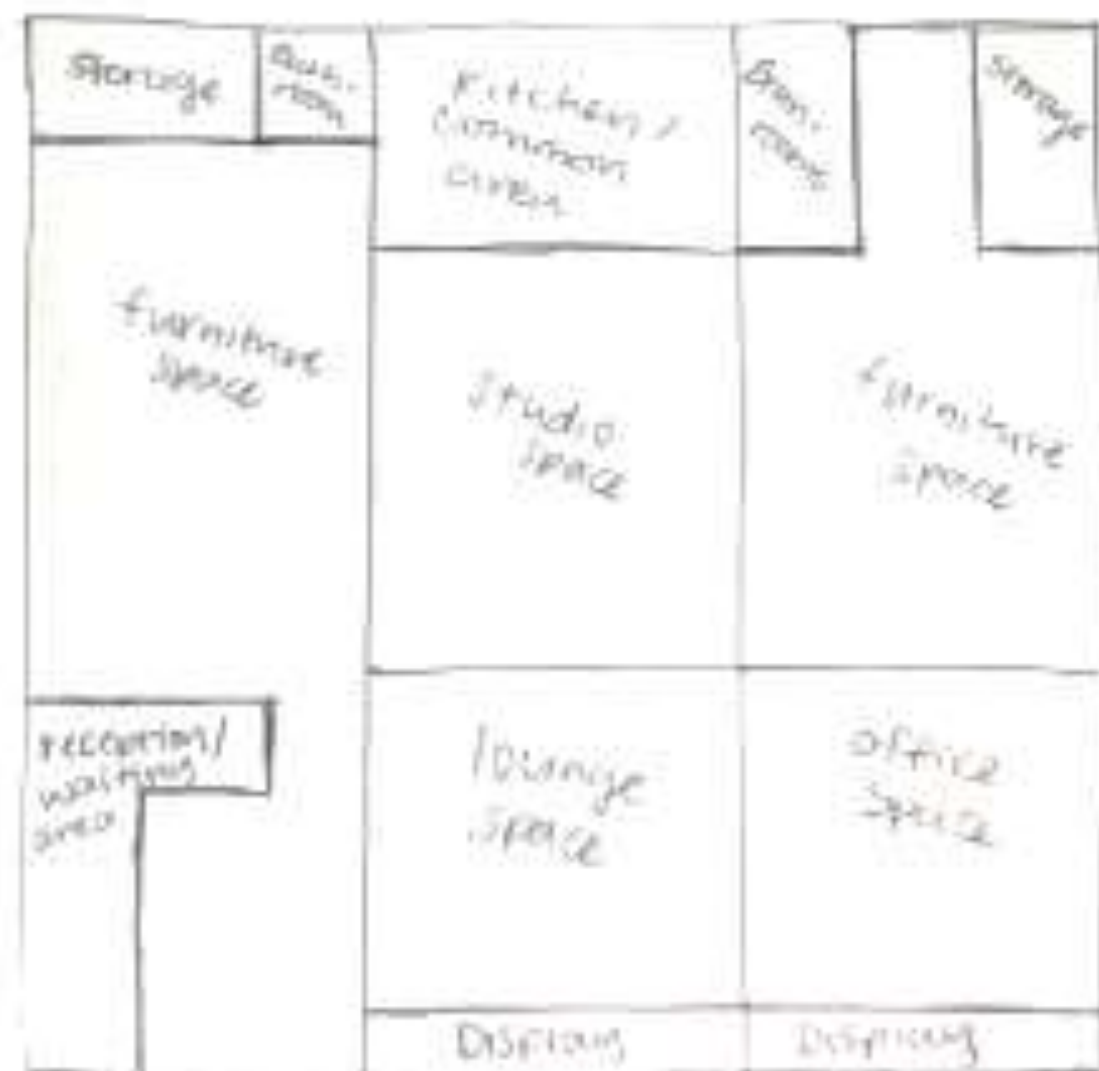
By: Madison Resavy

# Block Diagrams

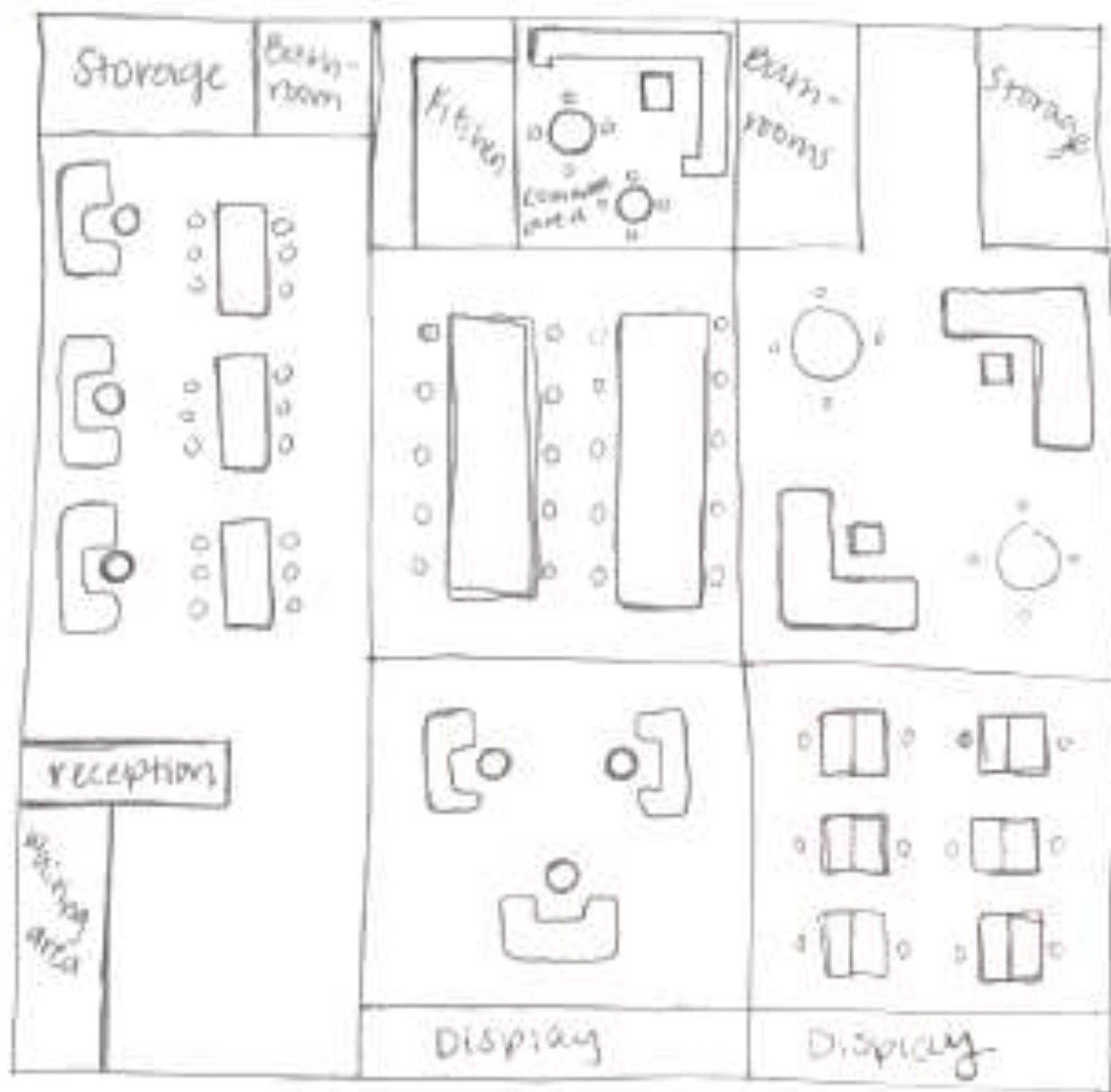
Storage / bathrooms	Kitchen/ common area	bathrooms/ storage
Furniture Space	Studio Space	Furniture Space
reception/ waiting area	lounge Space	office Space
	display	Display

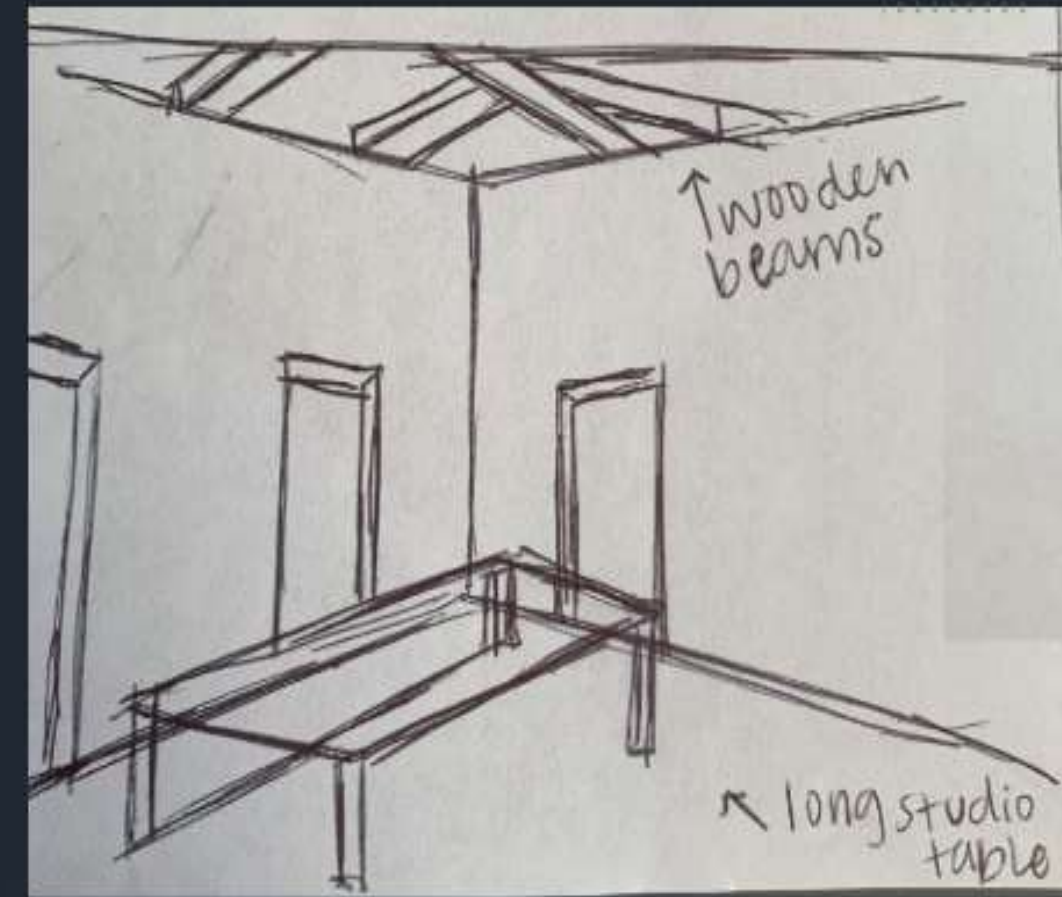
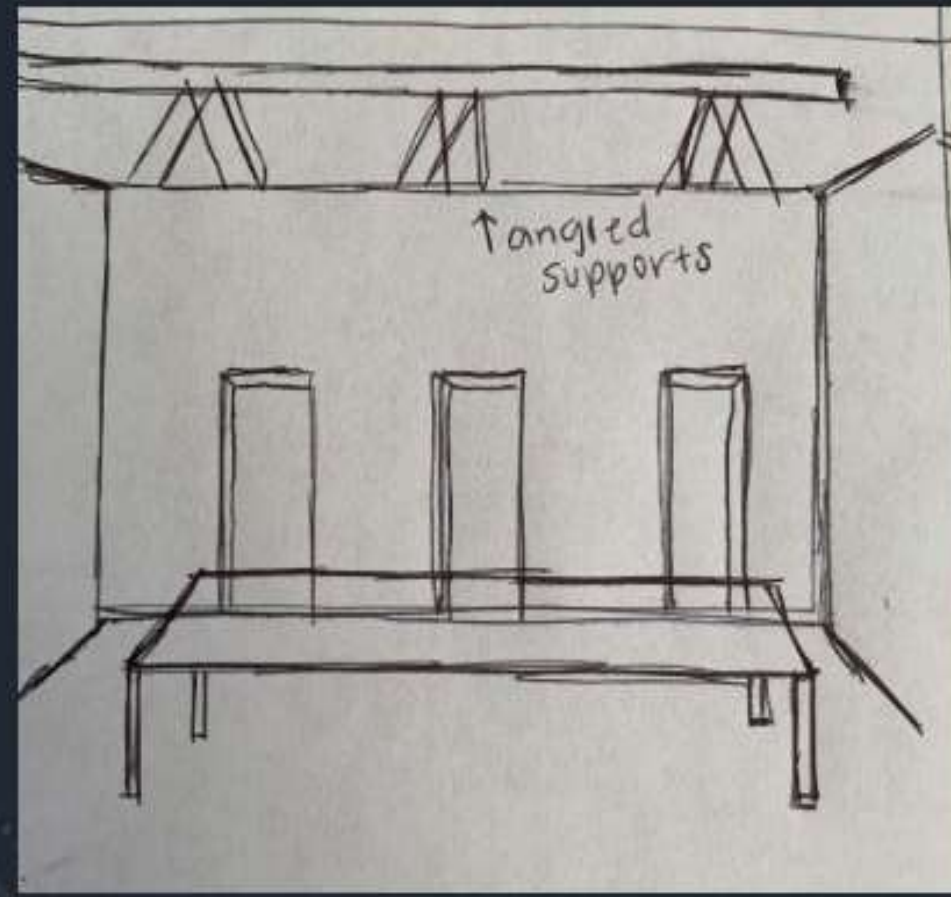
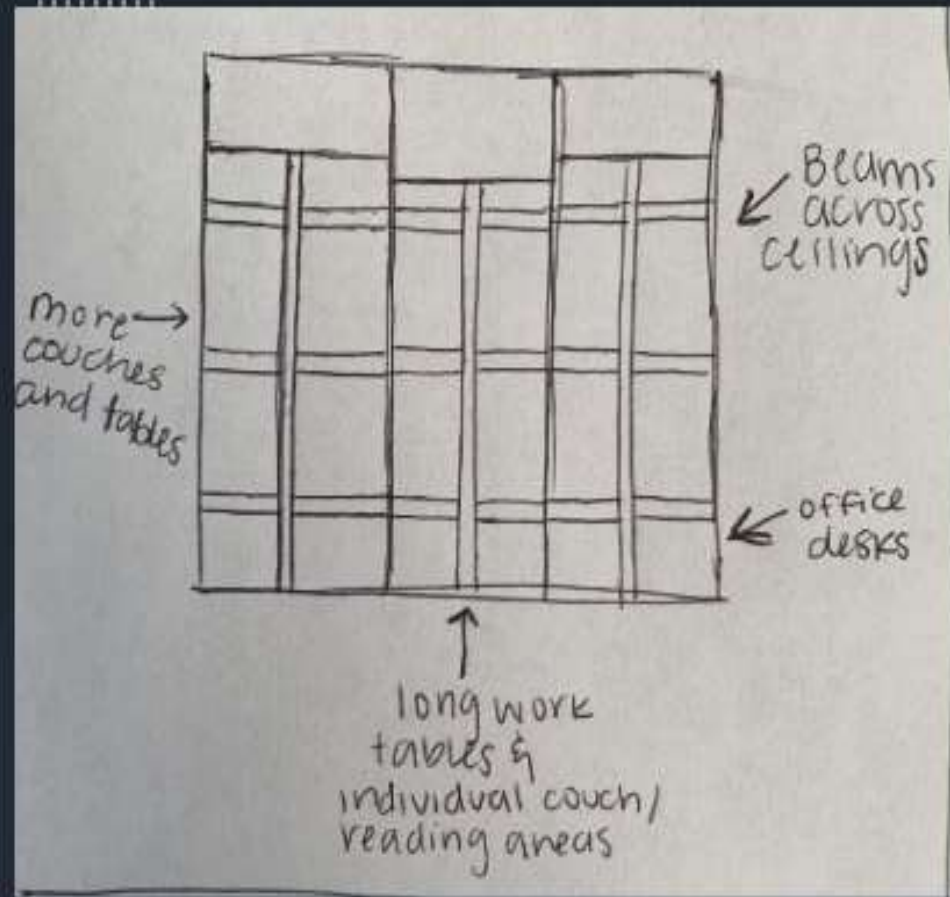
Bathrooms/ Storage	Kitchen/ Common area	Bathroom/ Storage
Furniture Space	Studio Space	
	lounge Space	Studio Space
	reception/ waiting area	
display		Display

# Space Plans



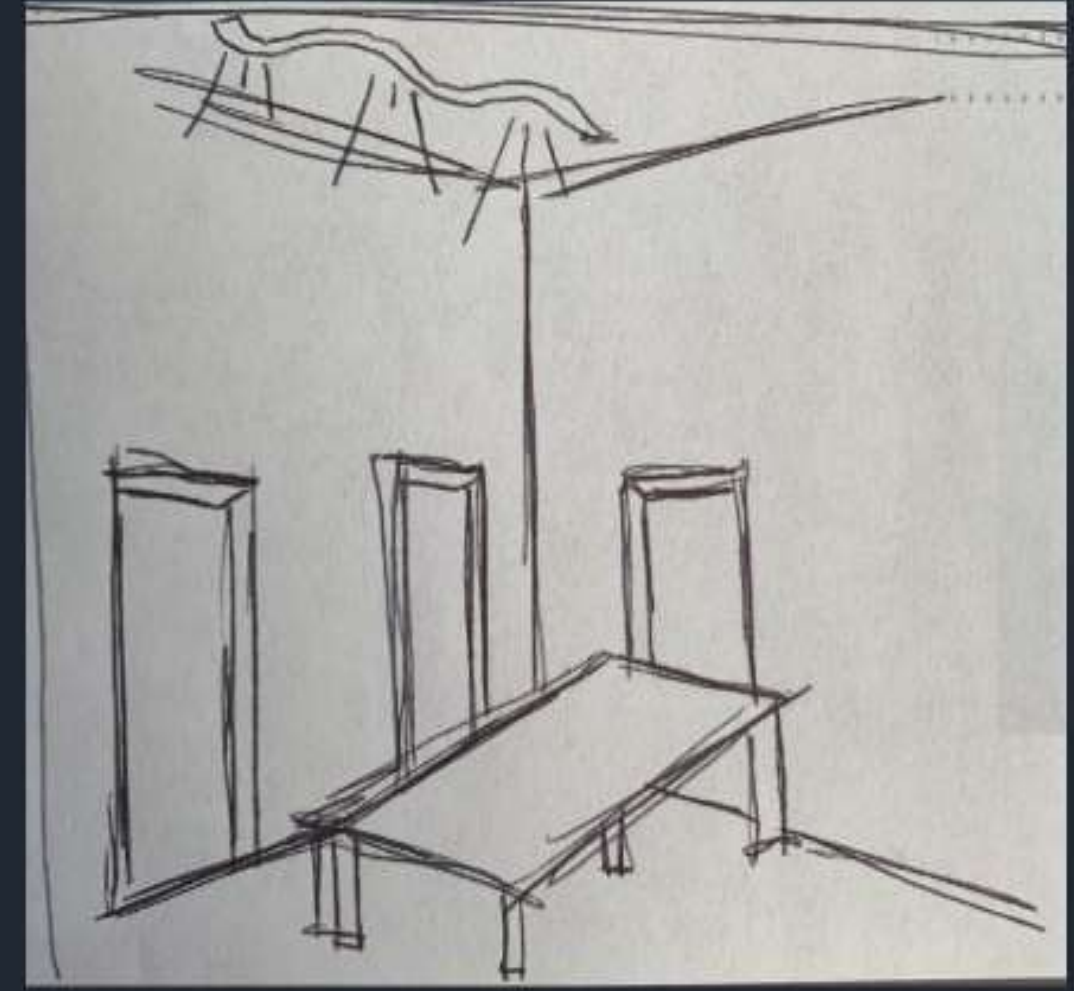
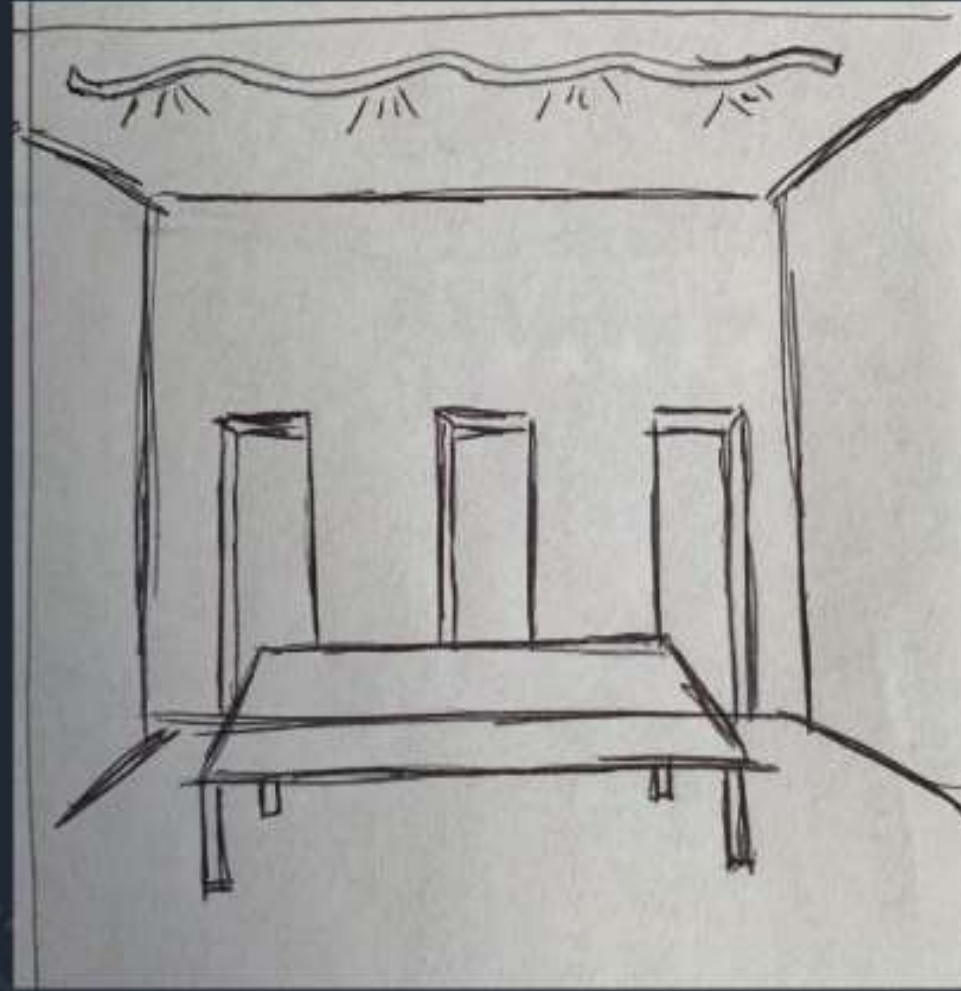
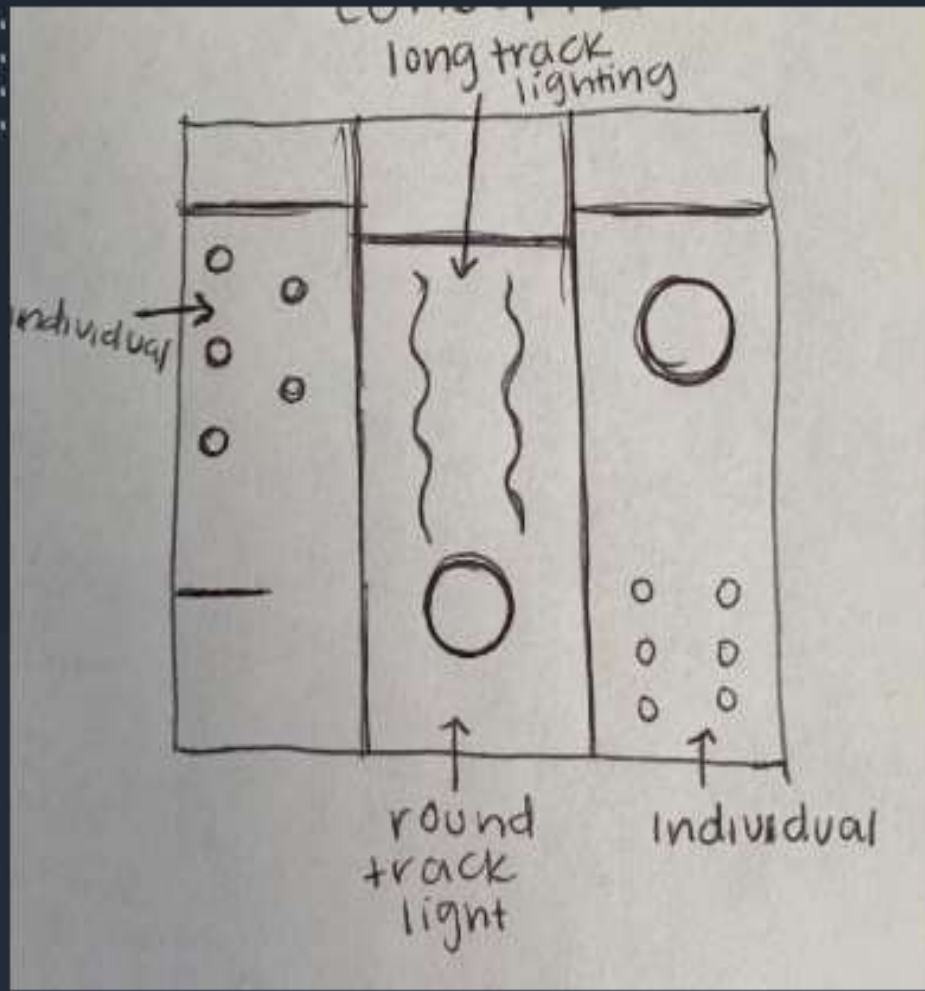
# Final Space Plan





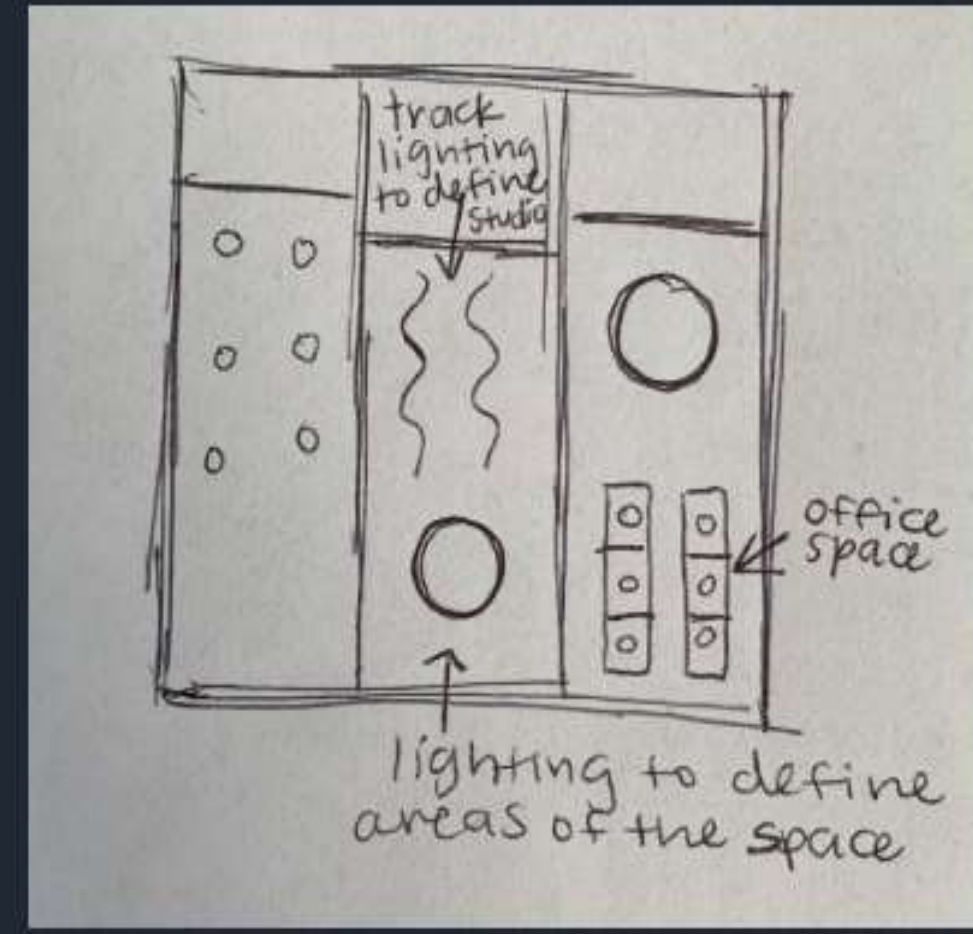
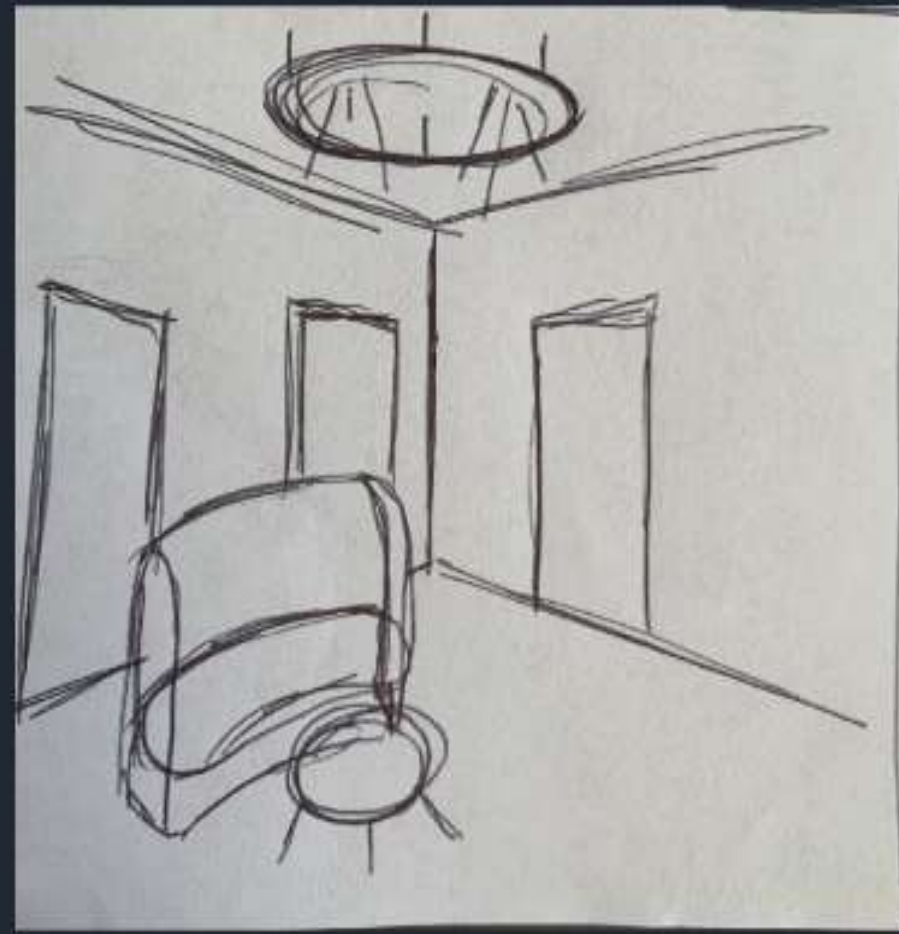
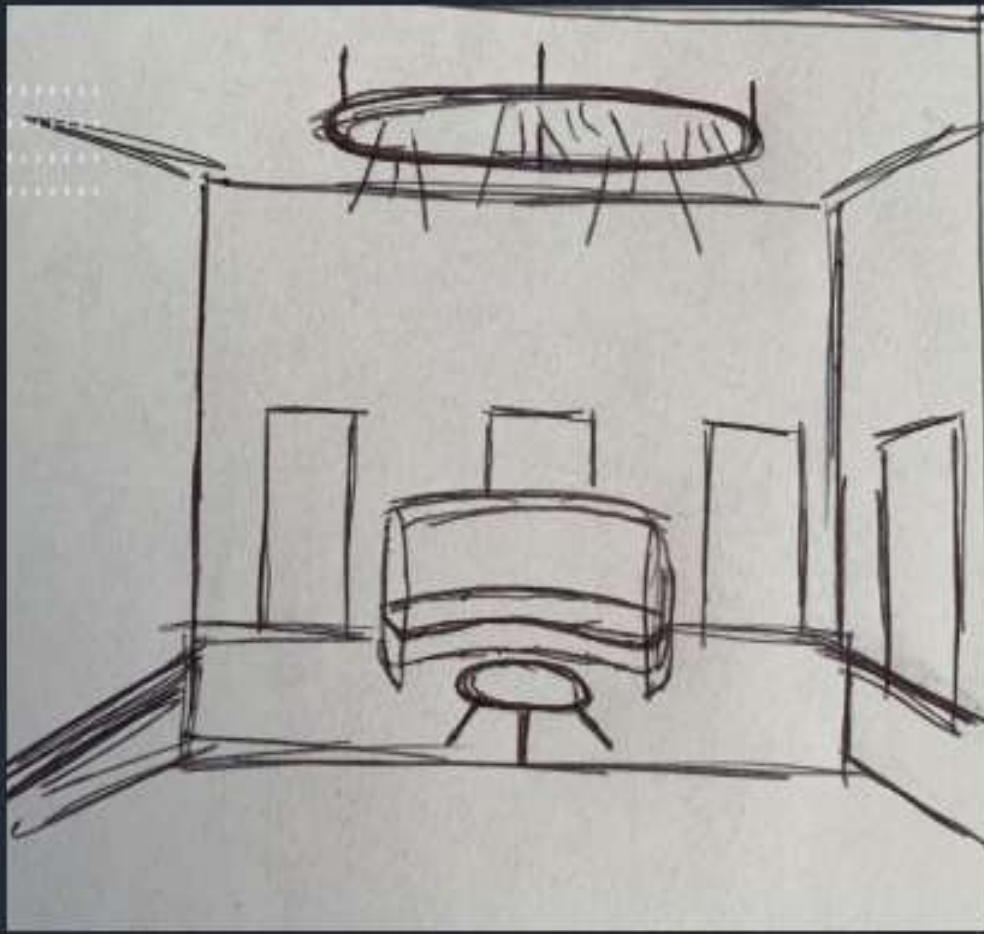
# Ceiling/Daylighting Concept 1

- Wooden beam(s) running across ceiling through each space
- Angled support beams coming off of center beam to add visual interest



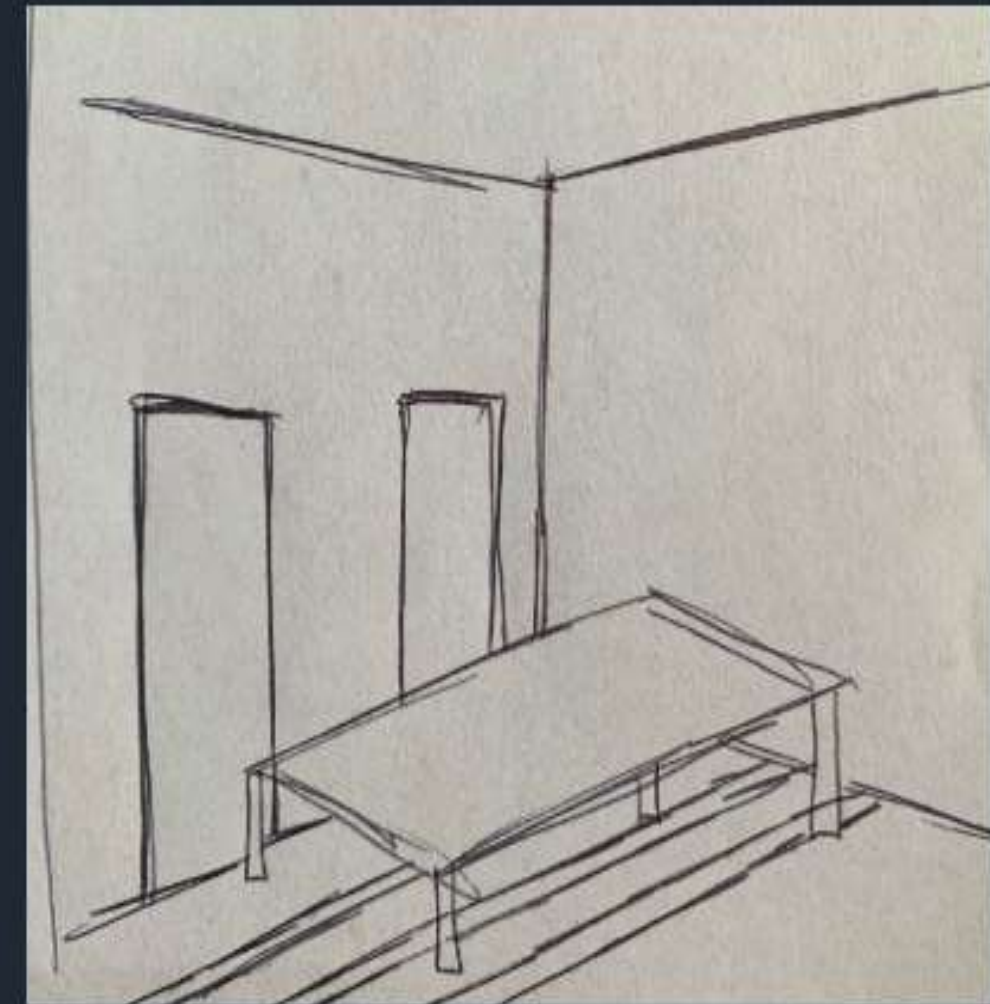
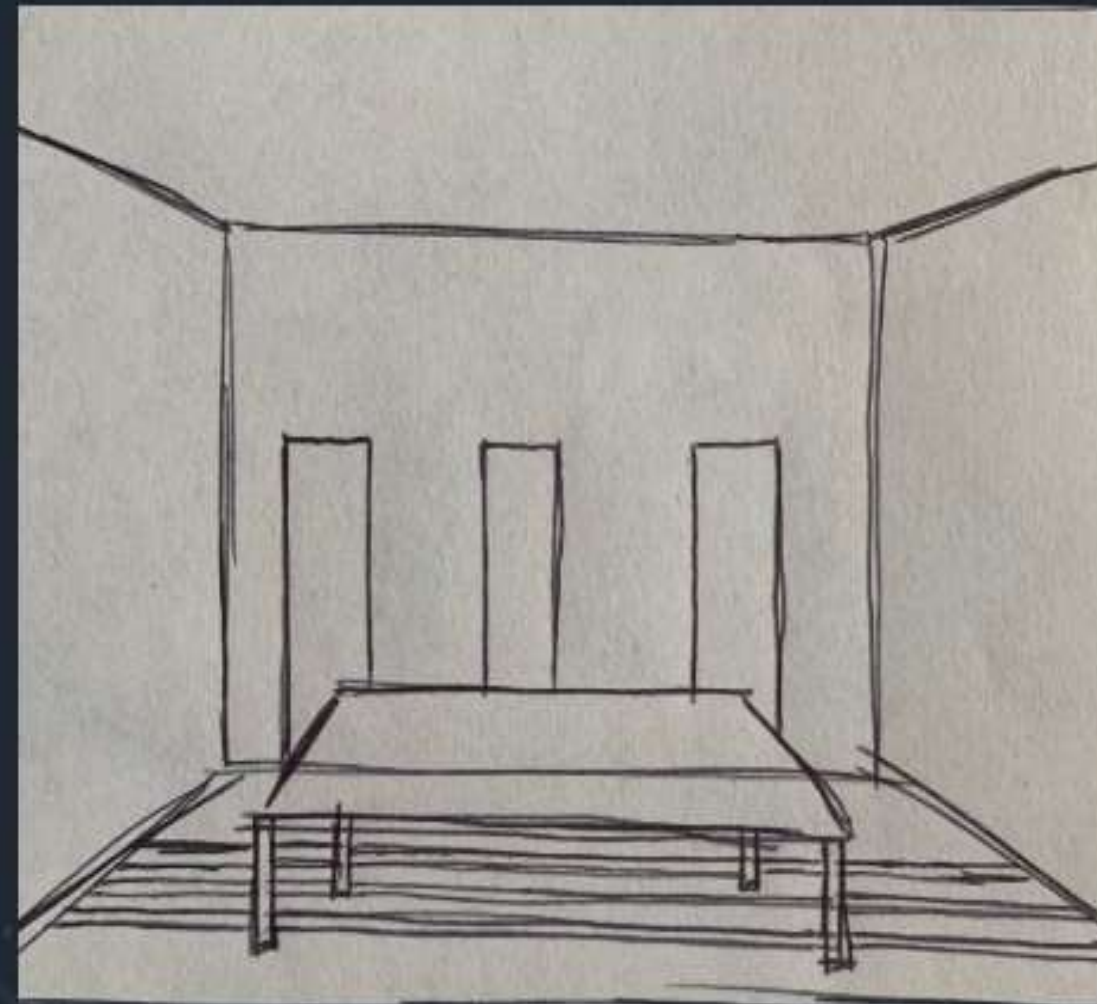
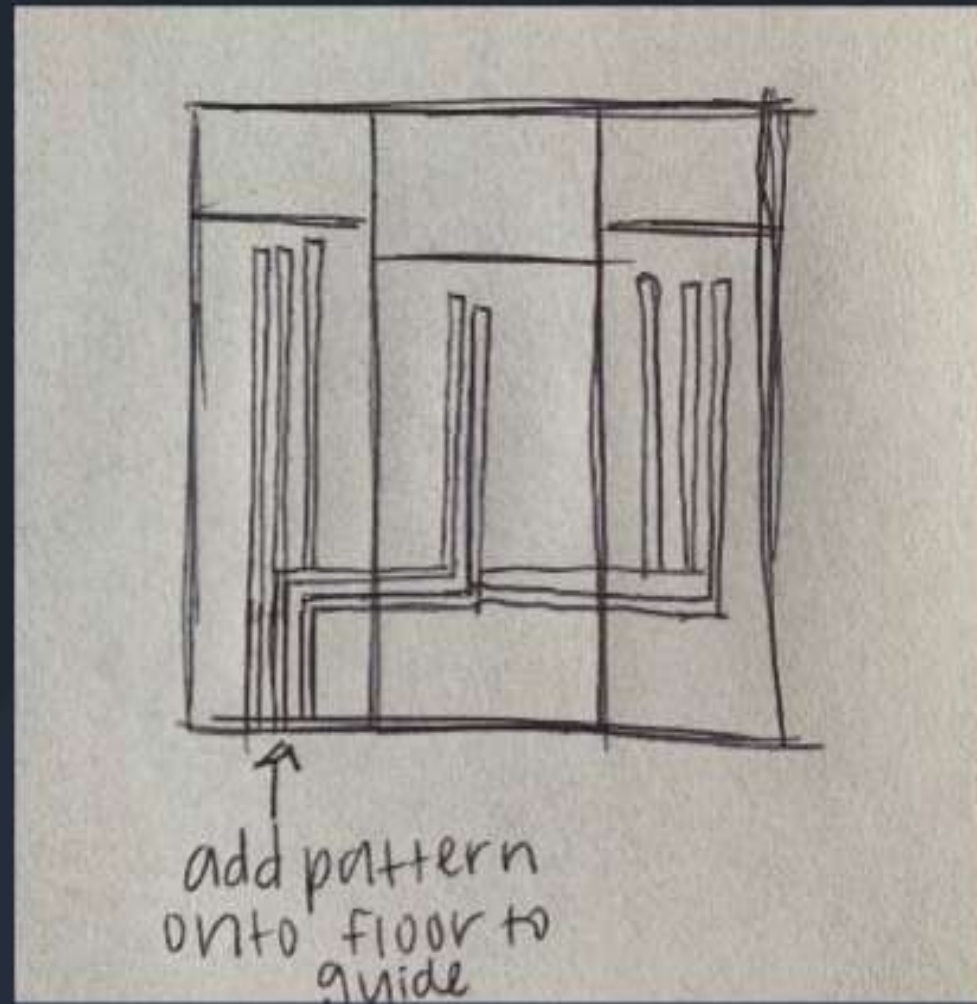
# Ceiling/Daylighting Concept 2

- Track lighting above designated areas
- Unique track above studio tables
- Used to define the spaces



# Wayfinding Concept 1

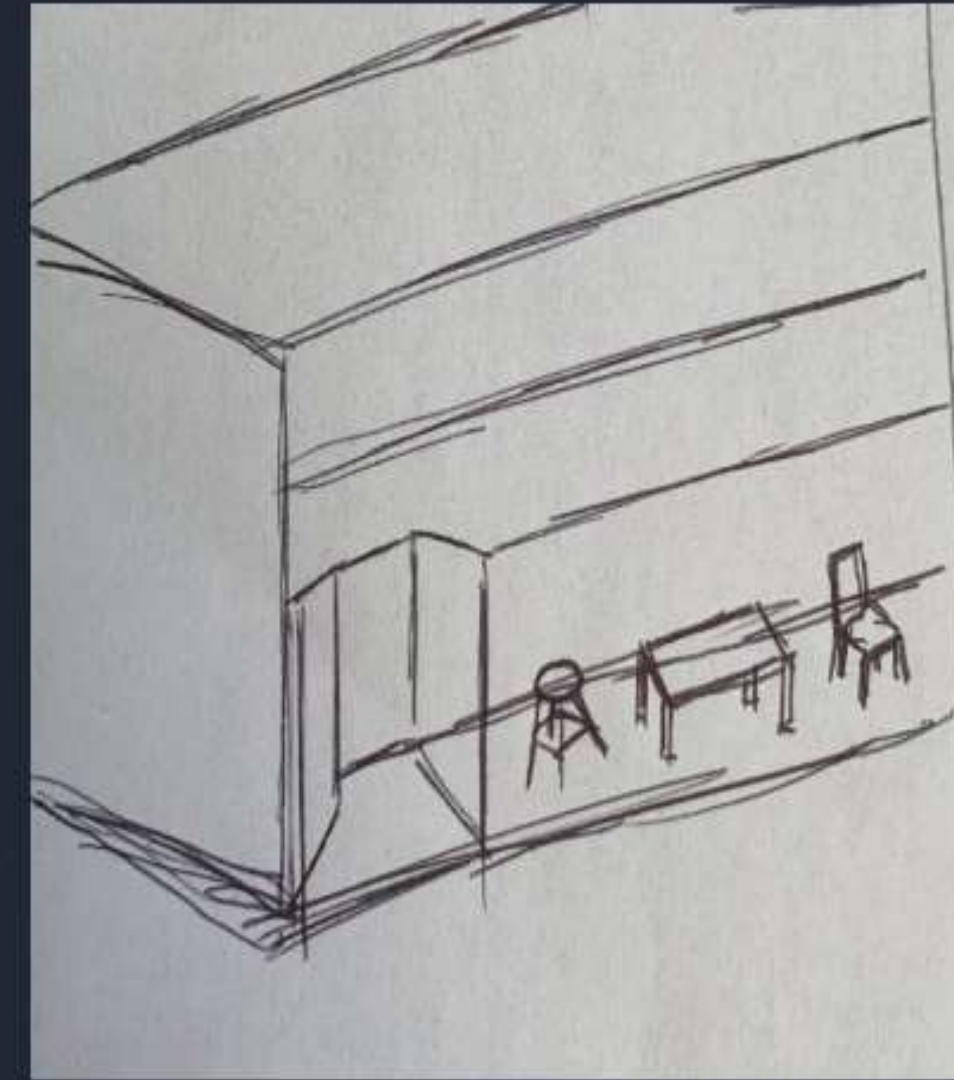
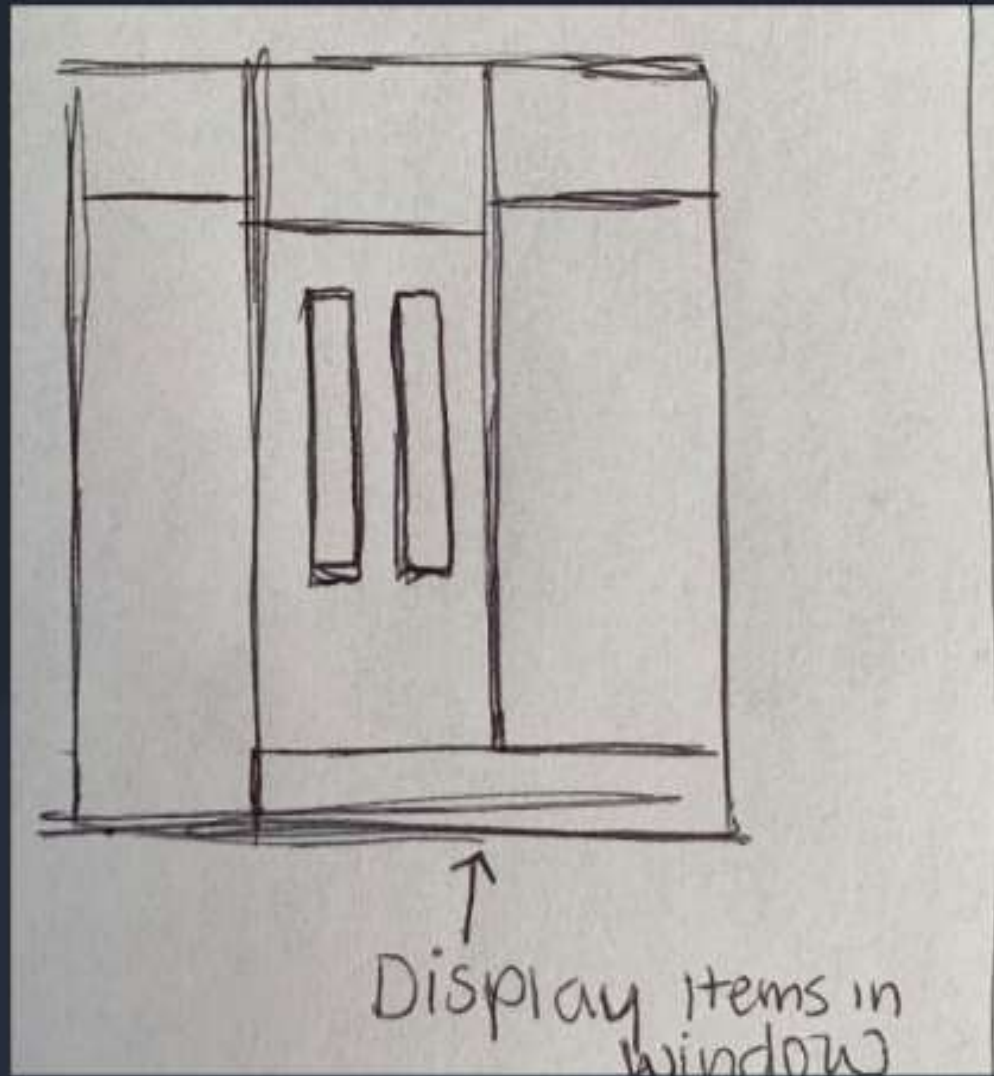
- Use unique lighting to designate the spaces such as the studio space or lounge space
- Lighting will help define the areas for customers, so each space feels somewhat like its own area and will help to guide customers throughout the space



# Wayfinding Concept 2

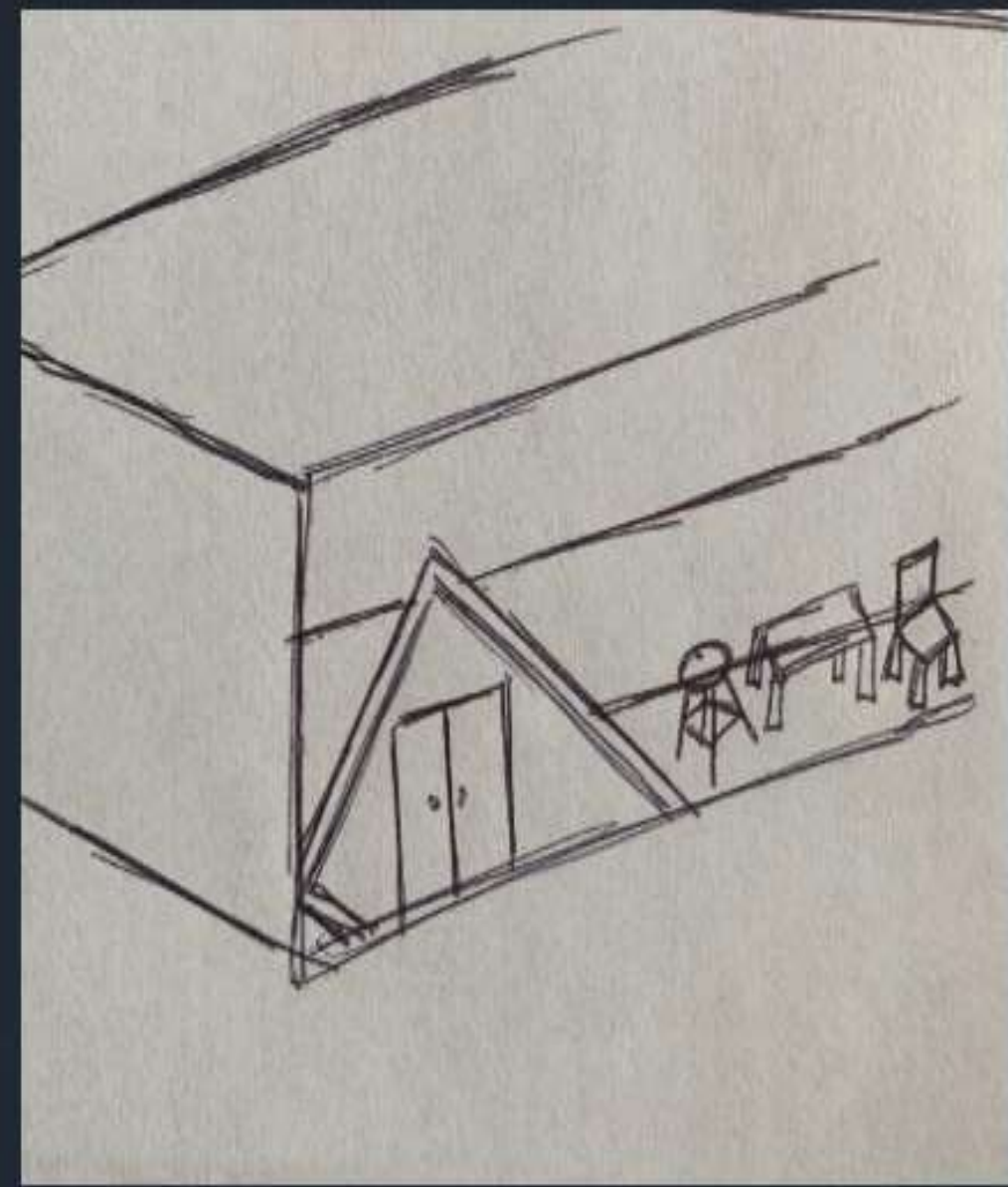
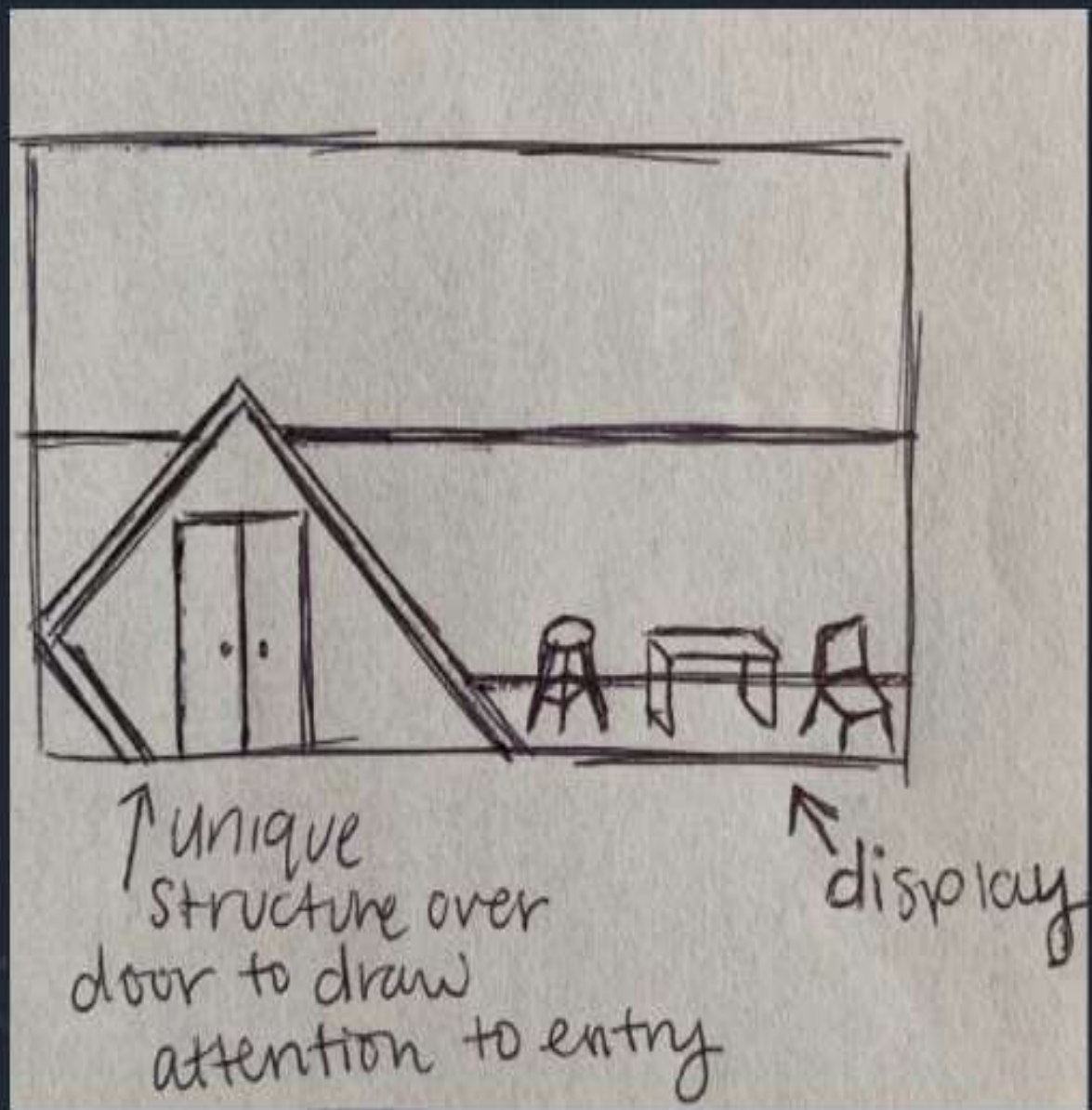
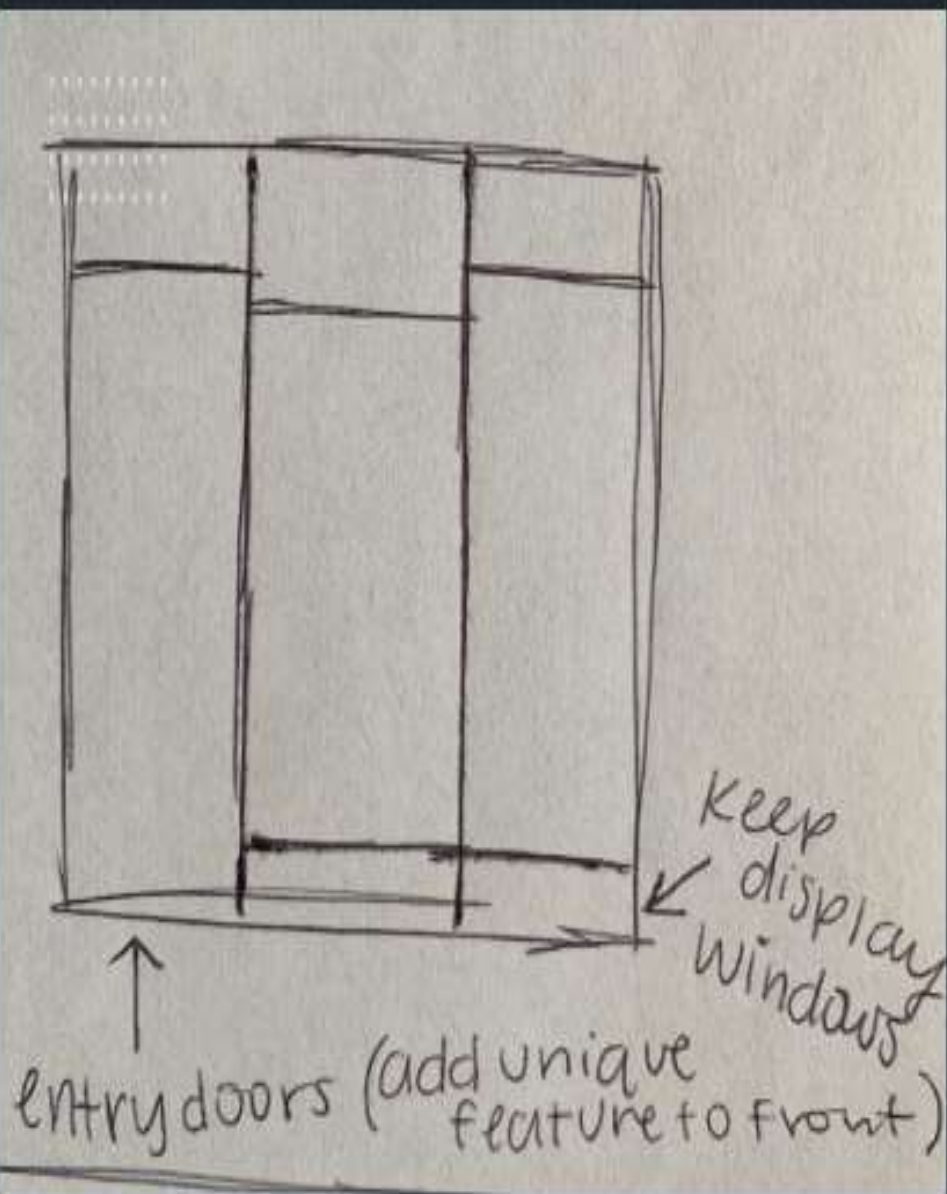
- Add a pattern design to the floor to guide customers through the spaces
- These pathways will help to define the spaces and keep customers moving around the whole space





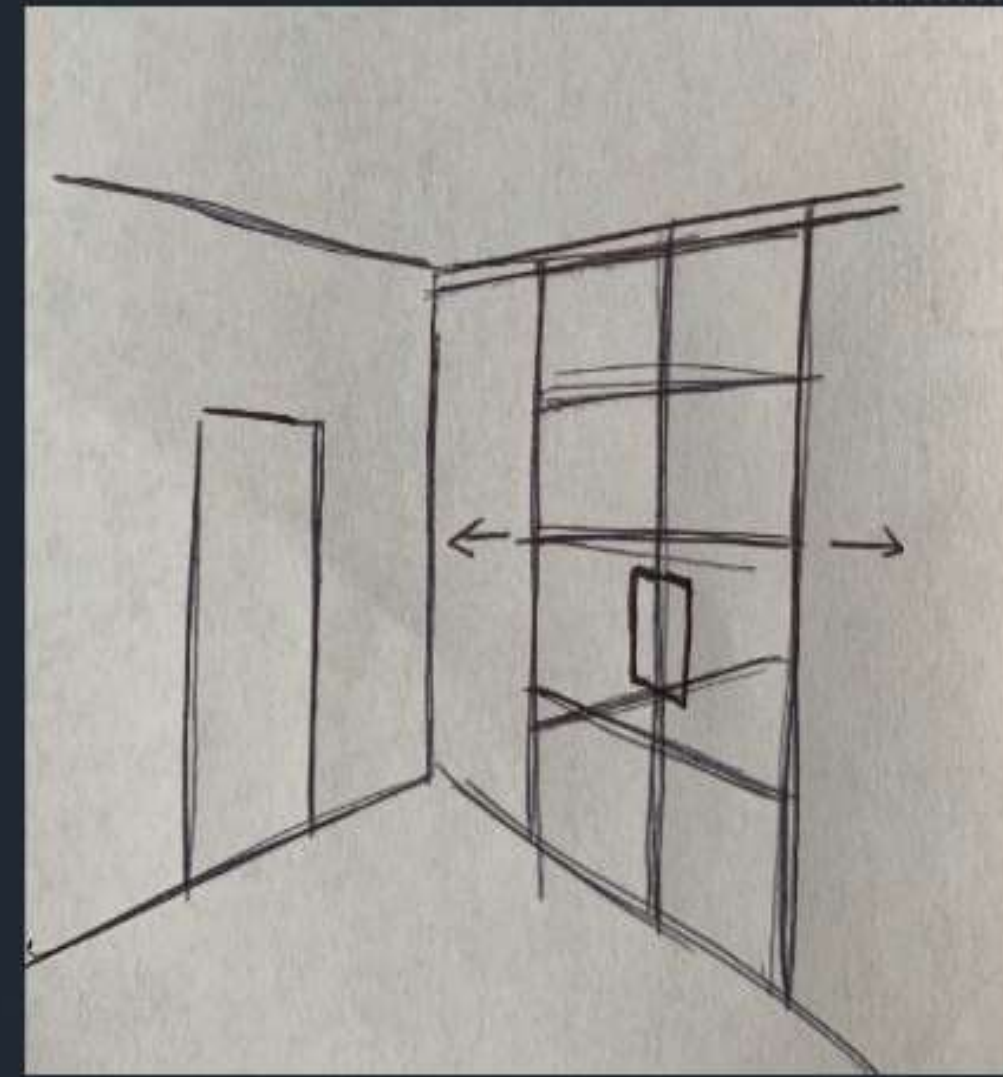
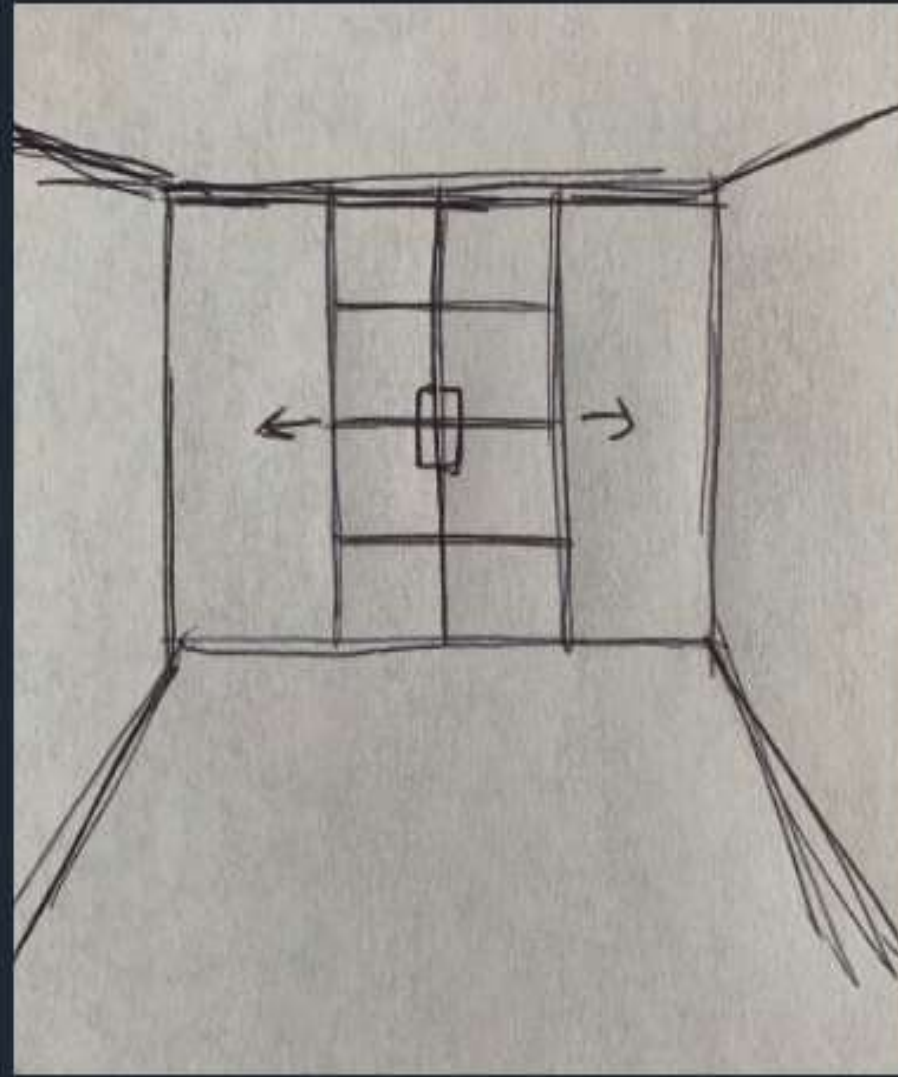
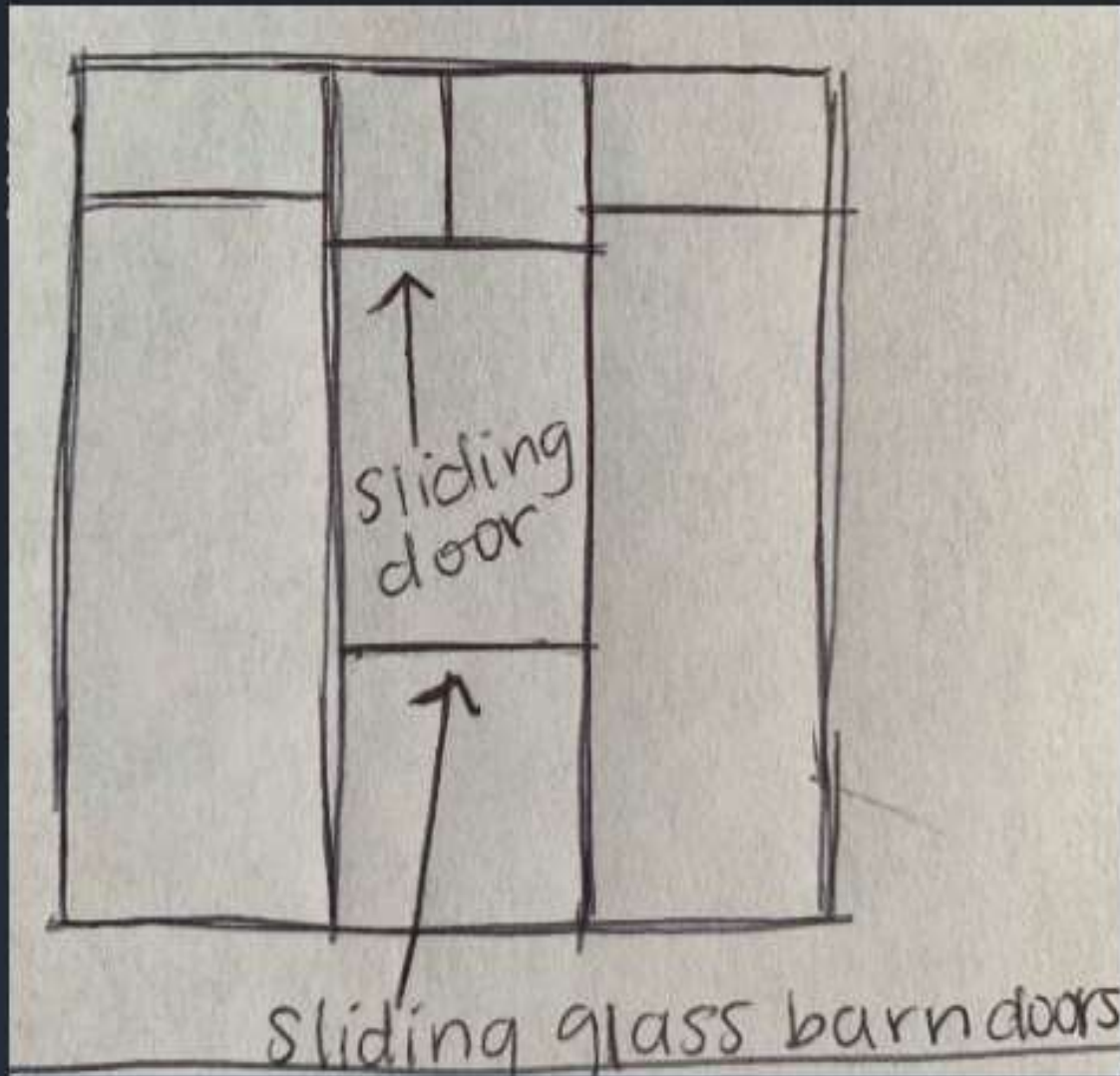
# Entry Concept 1

- By placing items up in the display window for the customers outside to see this will create something eye catching
- Which in turn will draw people into the store so they can look at more of the items that Teknion has available



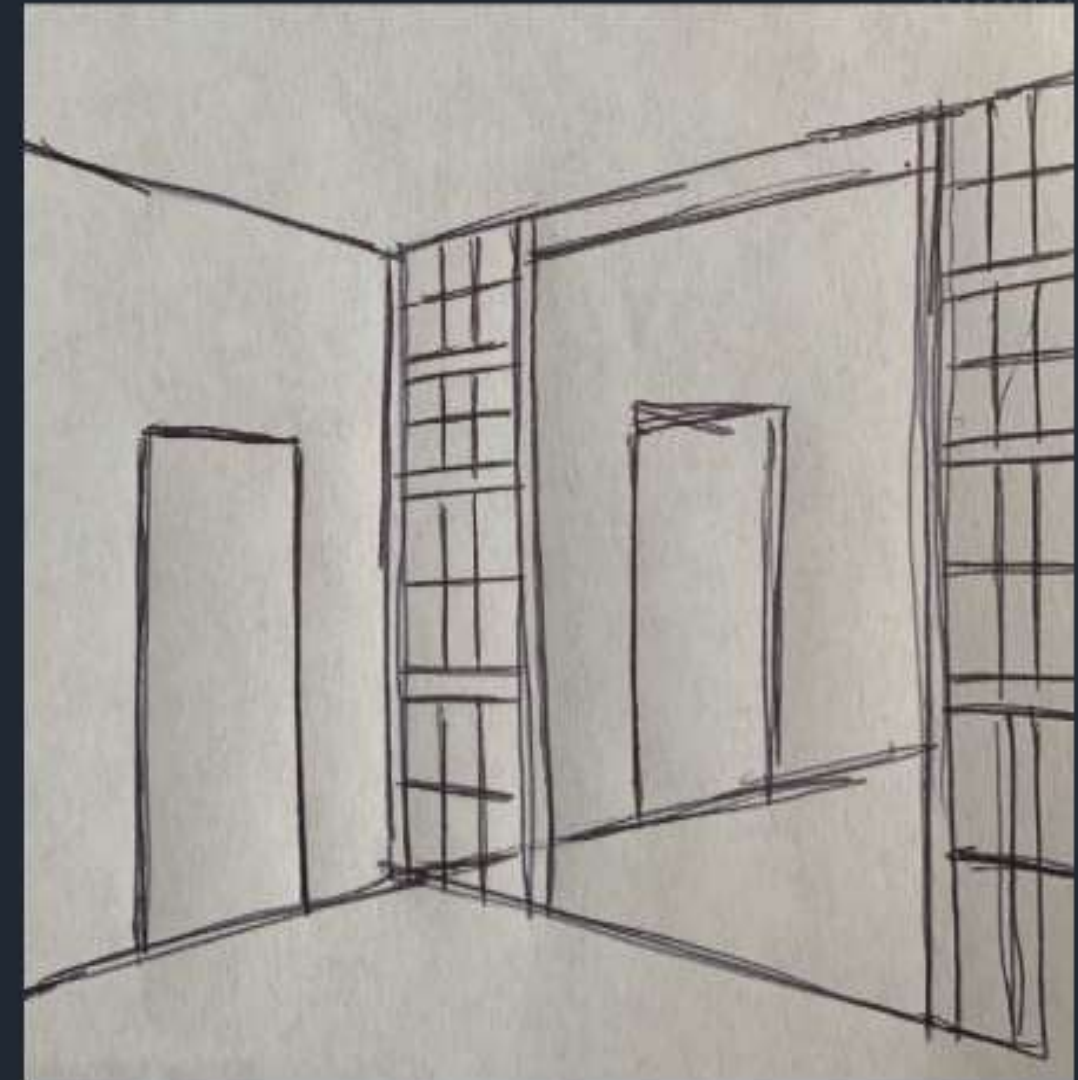
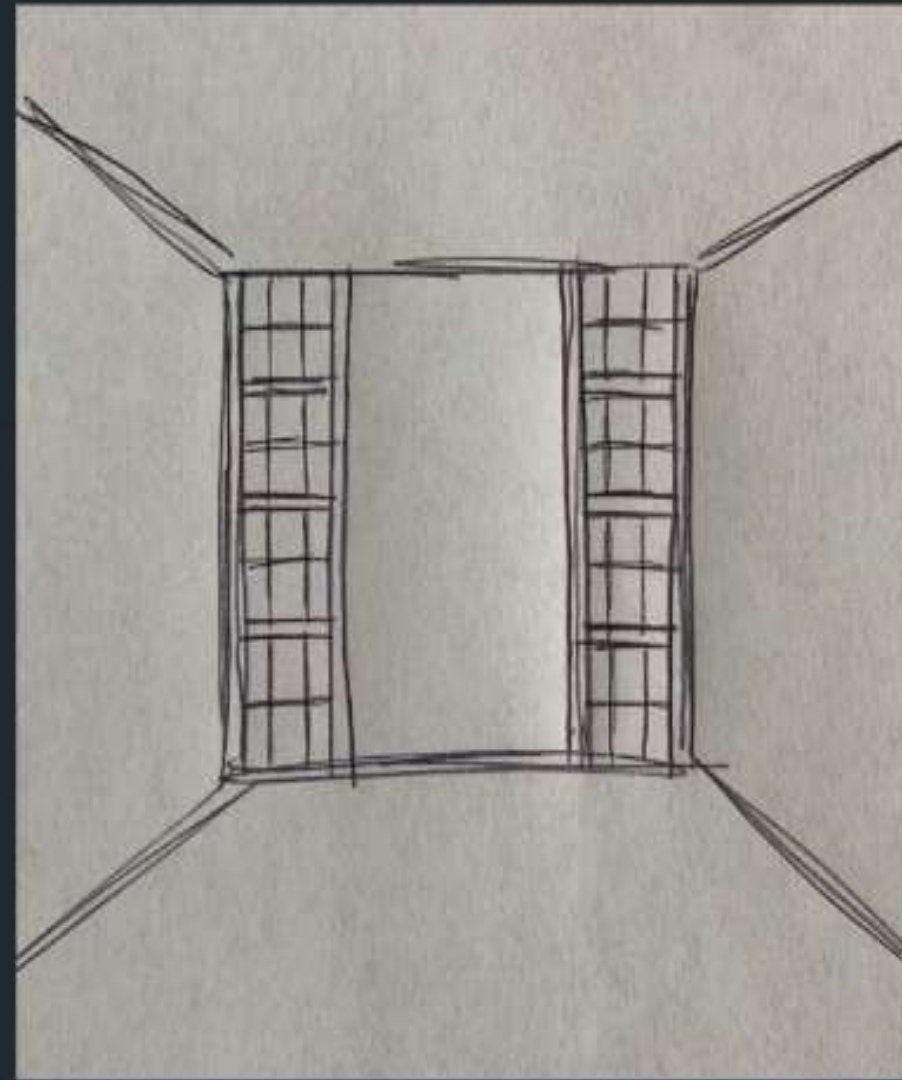
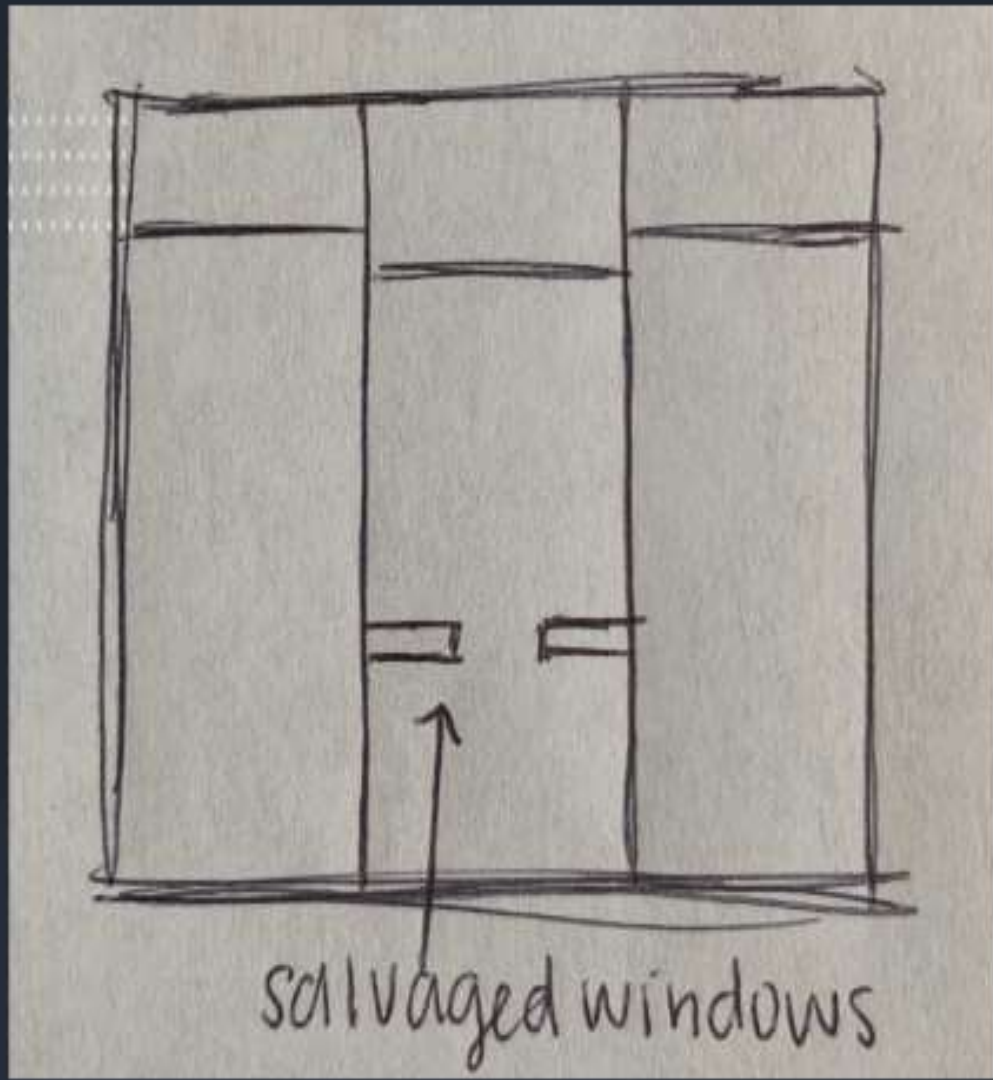
# Entry Concept 2

- Add a unique wooden feature over the front entrance outside
- This will draw people to the store and make them want to go inside and take a look around



# Enclosed Concept 1

- By adding sliding glass barn doors it will add some privacy, but will still make the space feel open
- This will also make sure that light can still get to the back of the space because the doors are glass rather than a full wooden door



## Enclosed Concept 2

- Using salvaged windows as a room divider creates an enclosed area and also saves money for the design
- This also keeps the light flowing to the back because the windows are made out of glass besides the wooden frame



# Finishes Concept 1



# Finishes Concept 2

