



KATE SPARLING

# Portfolio 1

IDSN 3202 001

# RESEARCH

## "MAKING AN IMPACT BEYOND FOUR YEARS"

### SUSTAINABLE BUILDING SYSTEMS

68% of commercial furniture ends up In a landfill.

One of the top 10 Sustainable building methods Is to have proactive maintenance - which will be focused.

“IT’S NOT JUST ABOUT A SUPPLIER-CLIENT RELATIONSHIP. IT’S THE MUTUAL RESPECT AND COLLABORATION BETWEEN TWO PARTNERS THAT HAVE DRIVEN AN INITIATIVE OF THIS SIZE, SPEED, AGILITY, EFFICIENCY AND CARE FOR THE ENVIRONMENT AND COMMUNITY ARE JUST SOME OF THE VALUES THAT RBC AND TEKNION SHARE.”

### LEED BUILDING CREDITS

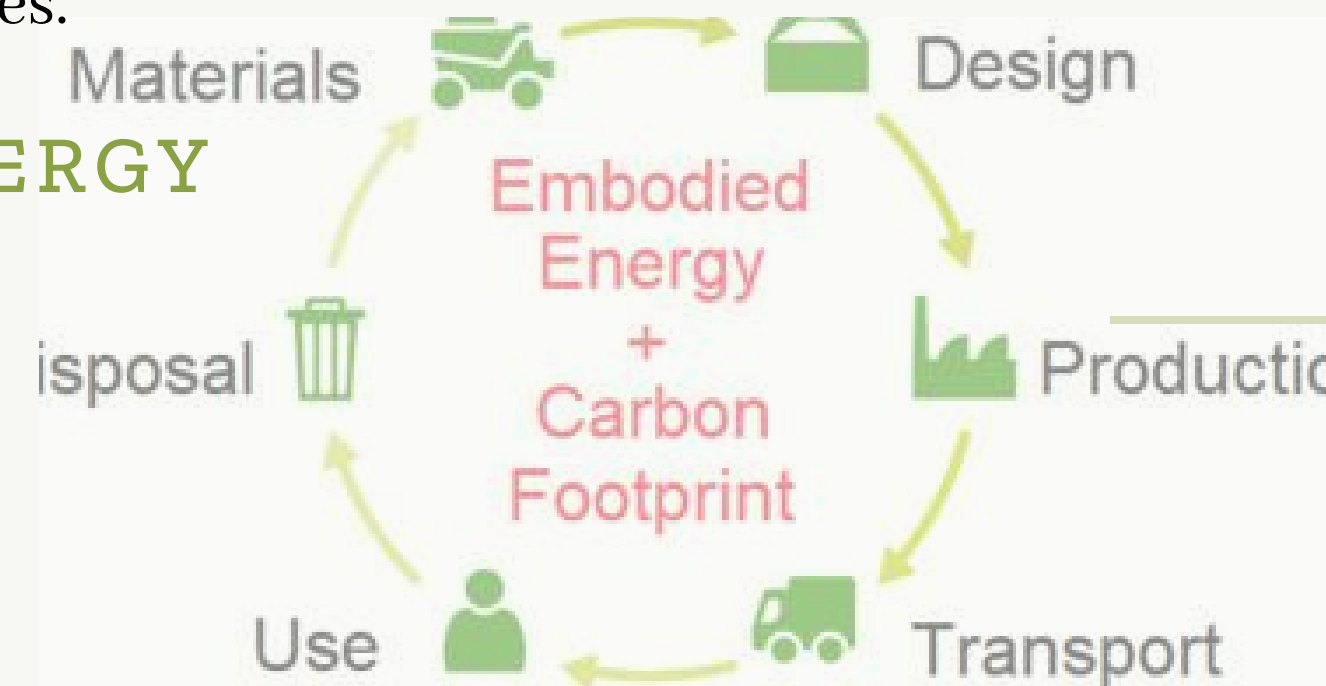
Leadership In Energy and Environmental Design.

One of the most widely known green building rating system. Benefiting people, planning and profit.

Encourages energy efficient building techniques and resource efficient spaces.

### EMBODIED ENERGY

Materials based on an energy efficient cycle - embodied energy.



# Stakeholder Profile



## OWNER

Real estate developer, Jackson Levitt

Enable a positive relationship with the community and  
Increase attention to the space while also making sure the clients needs are met and are sufficient.



## CLIENT

Teknion Furniture

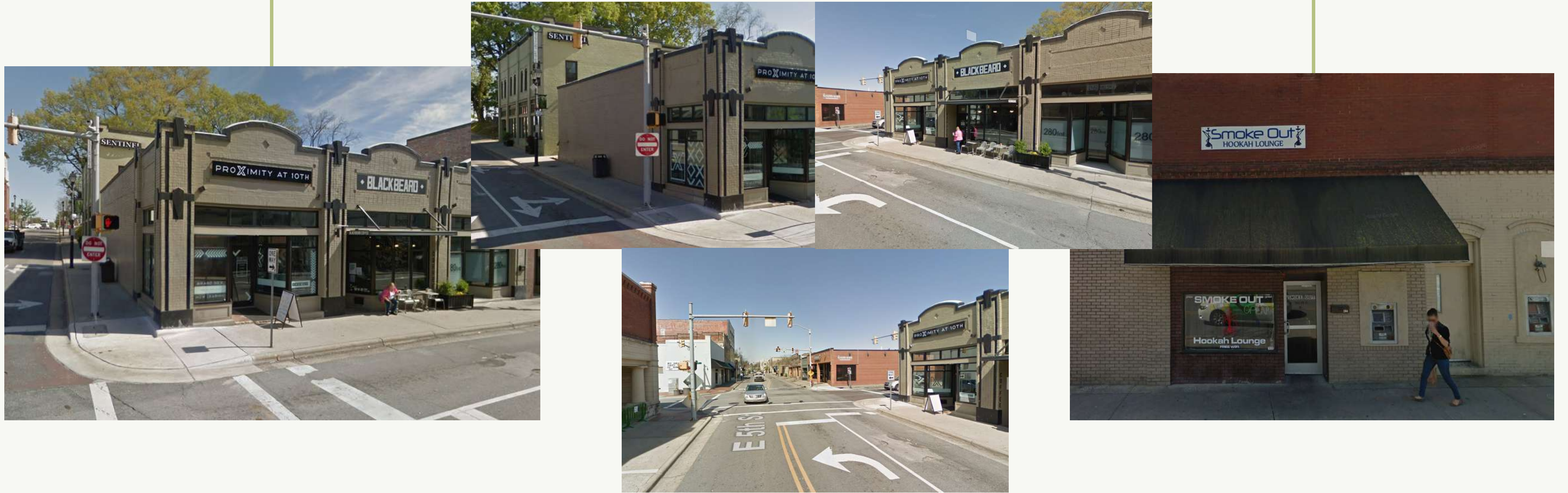
Wants to showcase the strength, durability, and  
uniqueness of Teknion designs to local and future buyers.



## USER

Interior design firm and facility managers from East  
Carolina University and Vidant medical center.

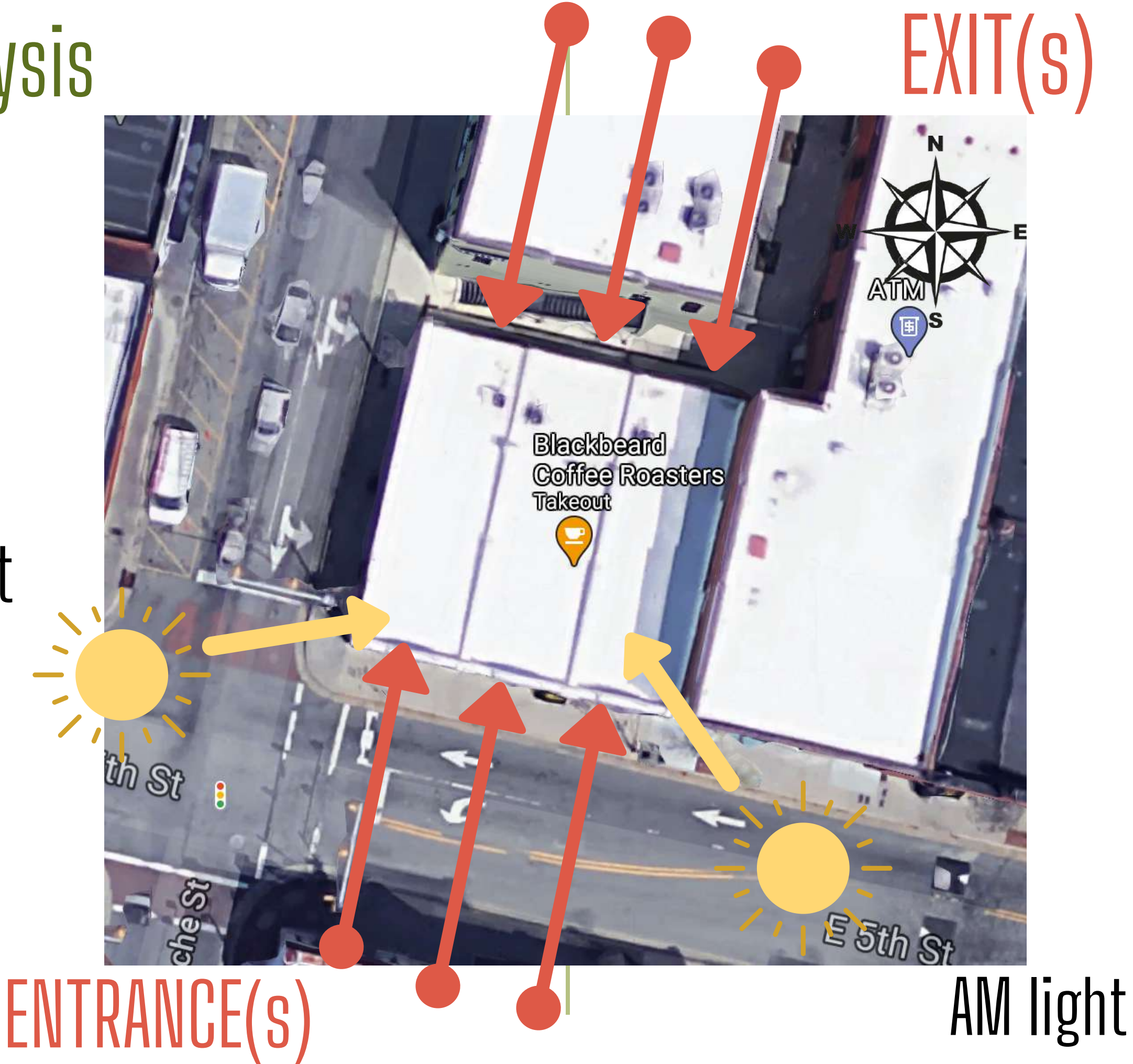
# SITE PROFILE



LOCATION:  
ON THE CORNER OF 5TH AND COTANCHE STREET  
IN DOWNTOWN GREENVILLE, NC

# Site Analysis

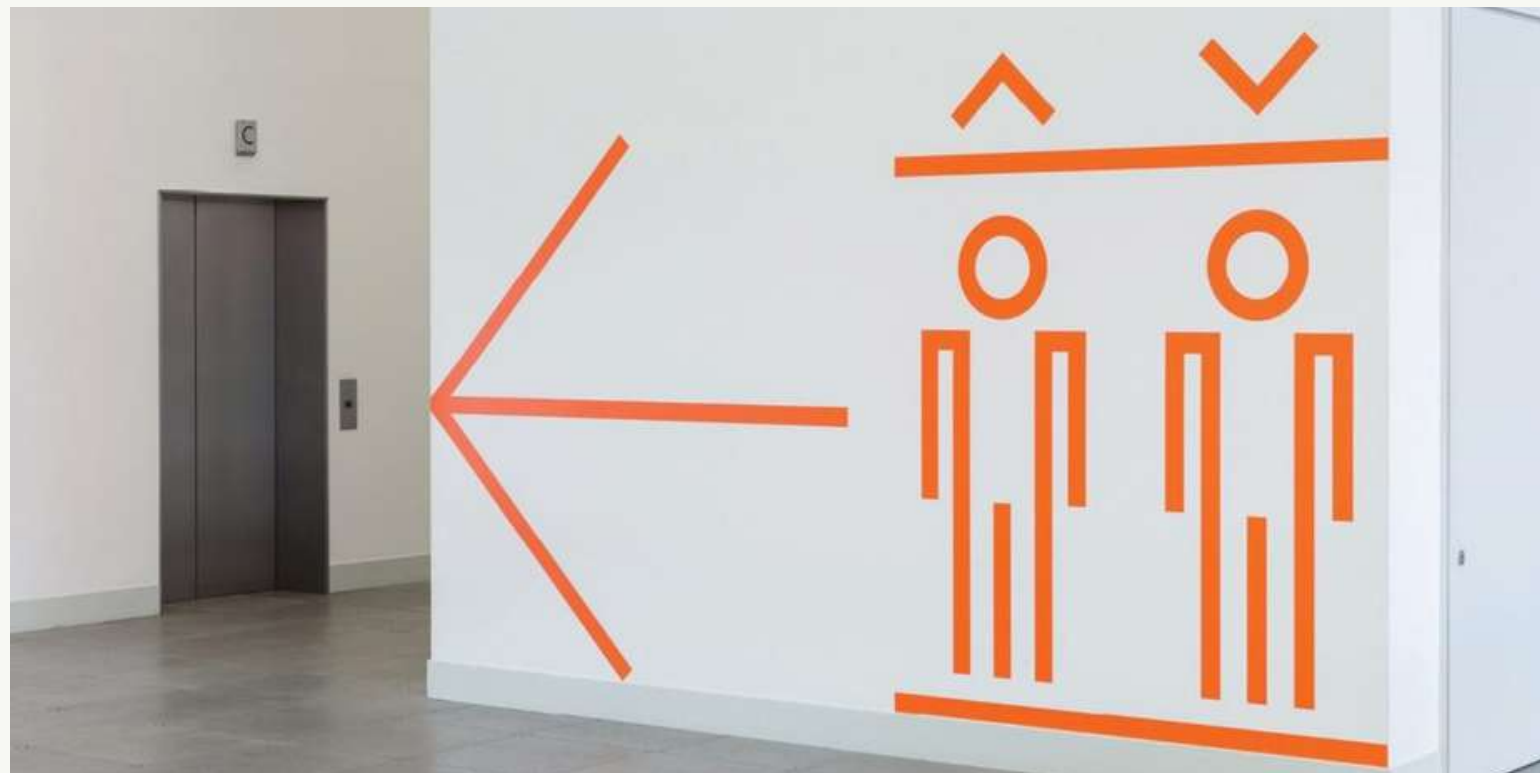
PM light



EXIT(S)

ENTRANCE(S)

AM light



# DESIGN PROBLEM STATEMENT

With the present COVID-19 regulations and the enforcement of social distancing In retail and work spaces, the movement between the space will be a key design focus.

Because the building embodies narrow deep spaces, getting exposure to the natural daylight to reveal the Interior at Its most prominent exposure will be challenging.

# REFERENCES

<https://www.greenvillenc.gov/government/planning-and-development-services/historic-preservation>

<https://www.teknion.com/tools/inspiration/sustainability/higher-learning-2>

<https://blog.senseware.co/2017/05/30/top-10-sustainable-building-methods>