

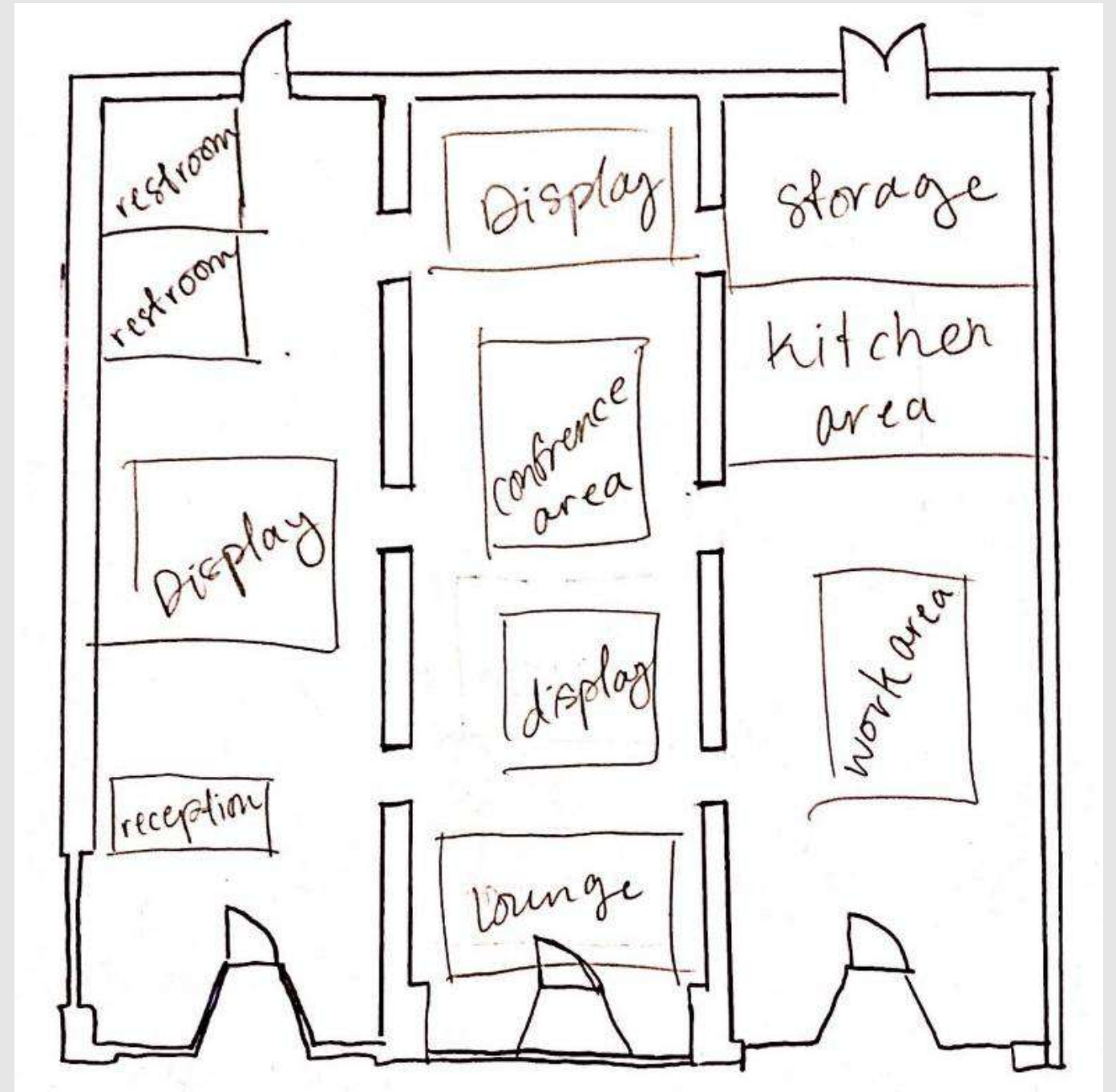
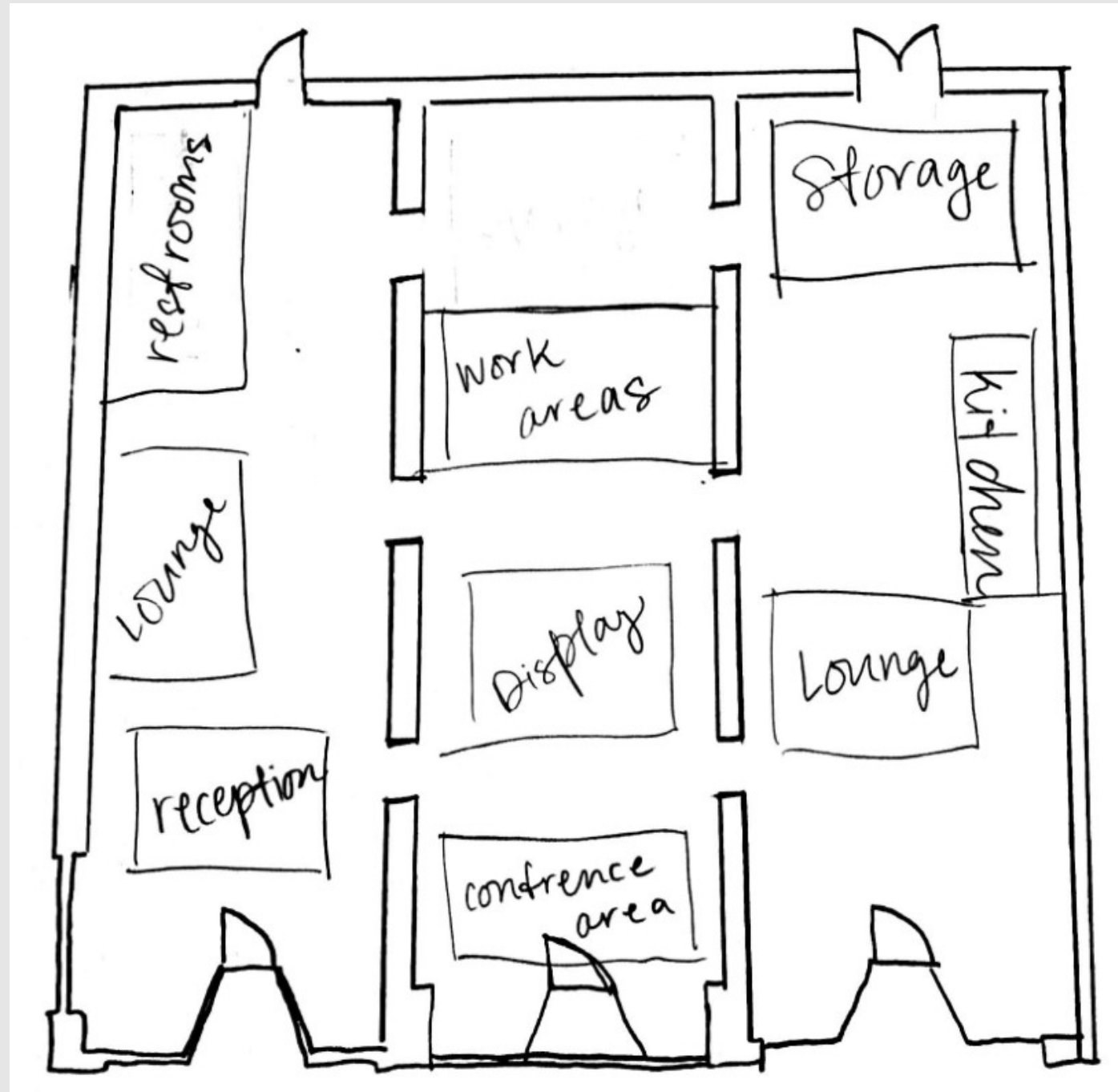
An abstract painting featuring a complex composition of warm and cool colors. Large, textured brushstrokes in shades of terracotta, ochre, and muted reds dominate the right side, while the left side is characterized by cooler tones of teal, green, and light blue. The overall effect is one of dynamic movement and layered depth.

# Portfolio 2

Carrie Thompson

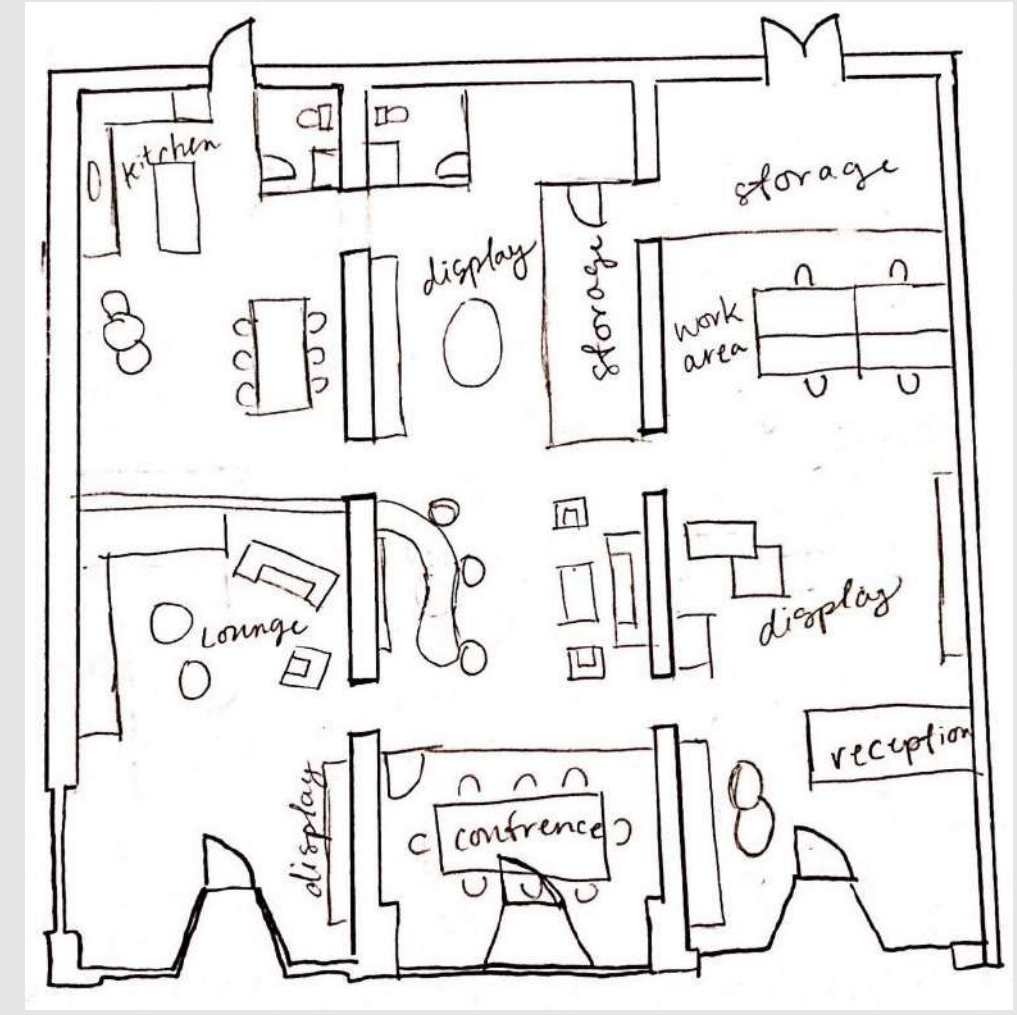
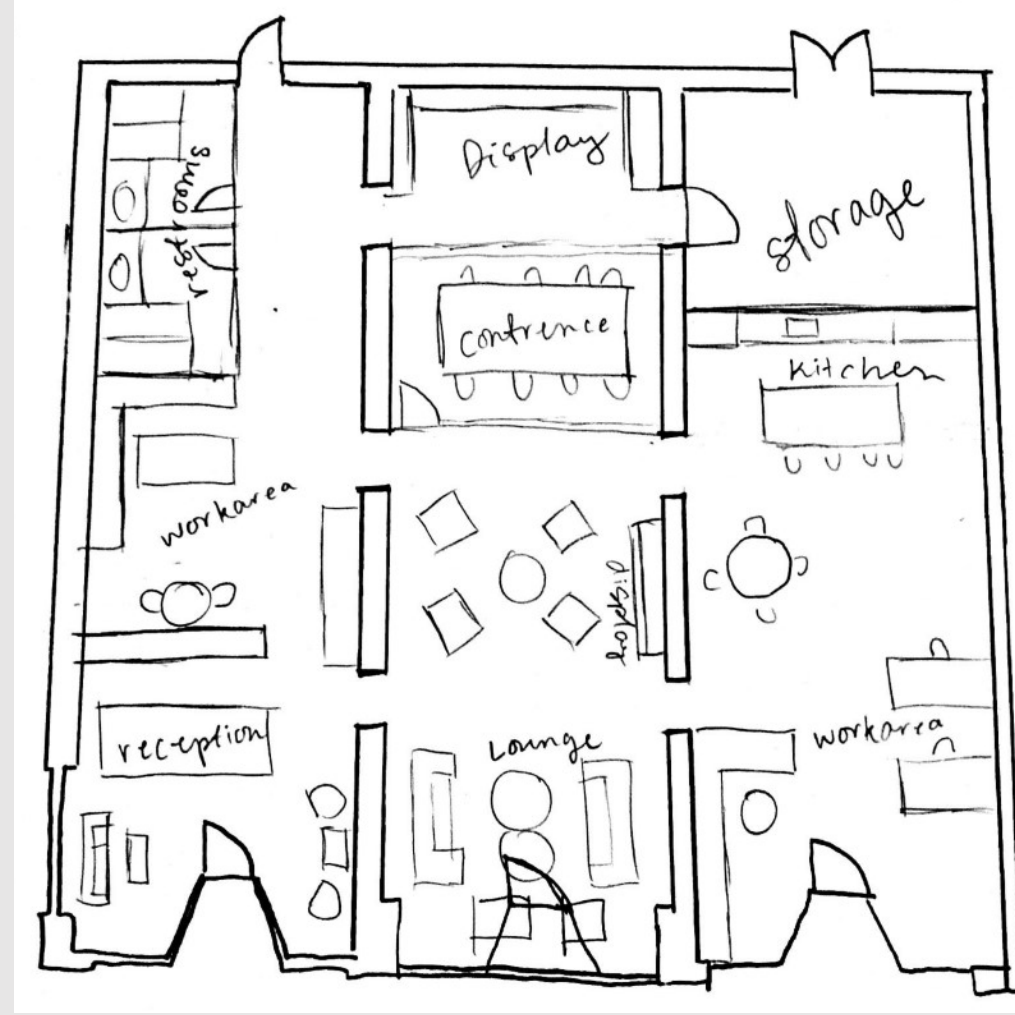
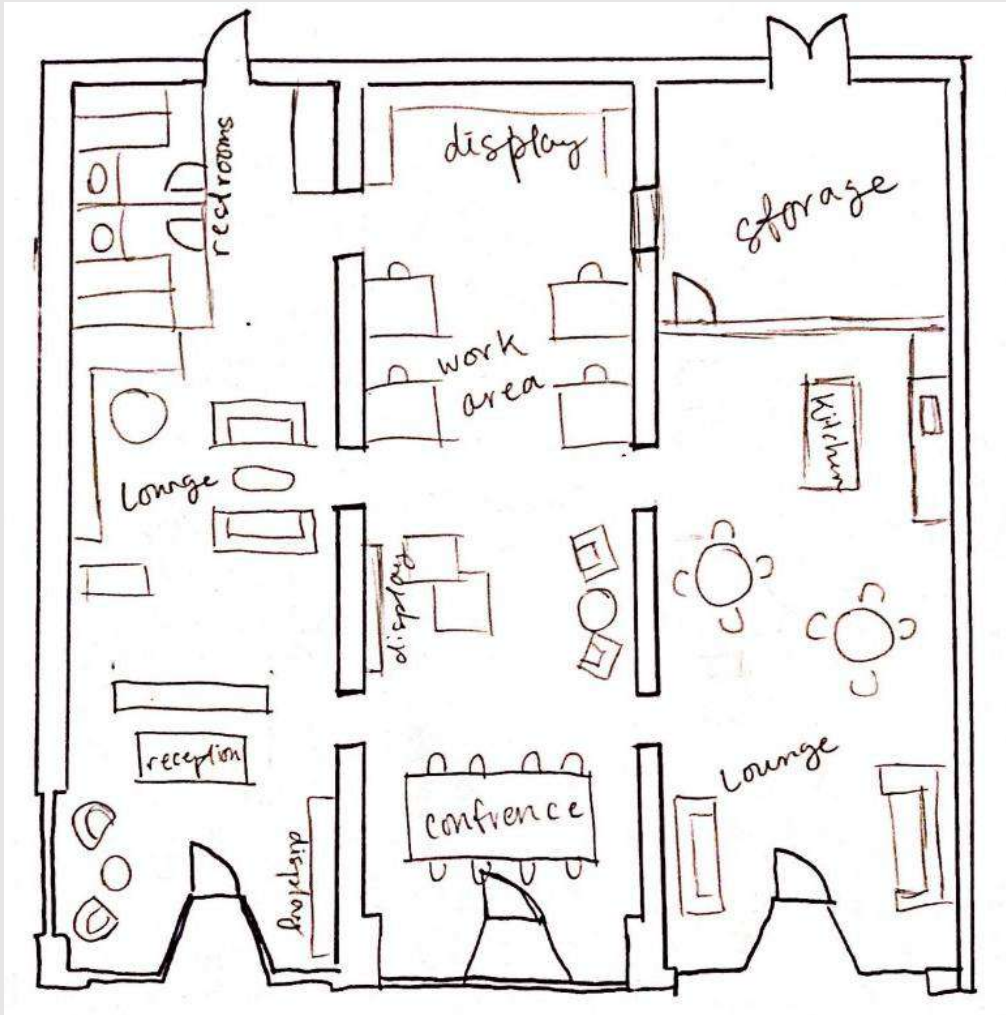
IDSN 3102 F20

# Blocking

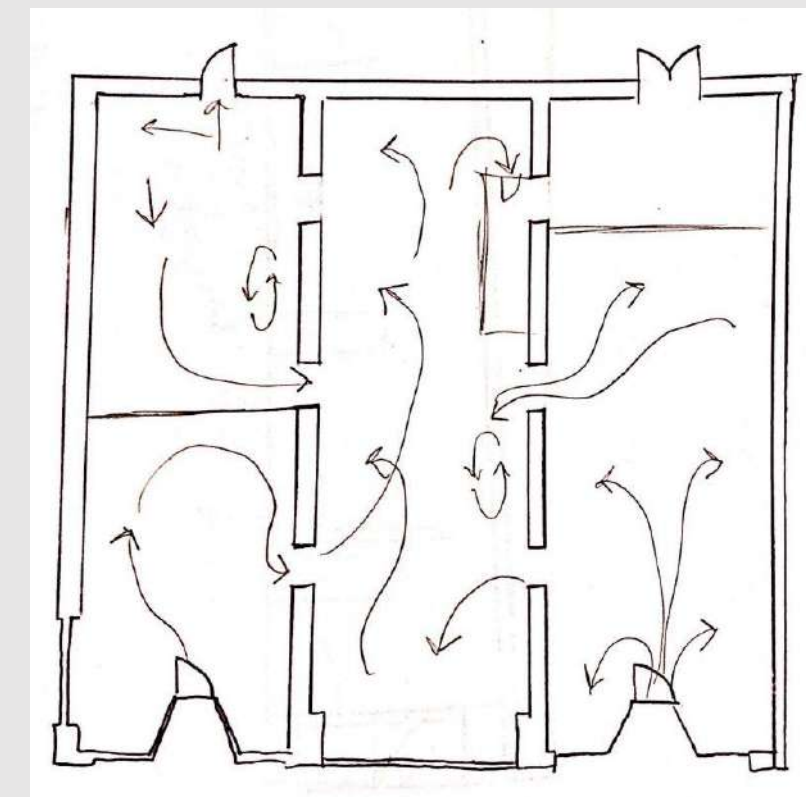
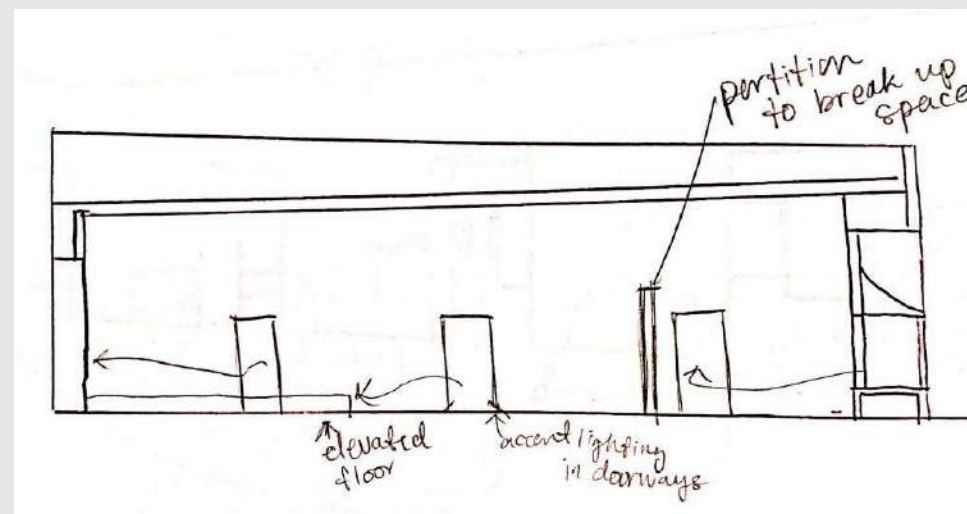
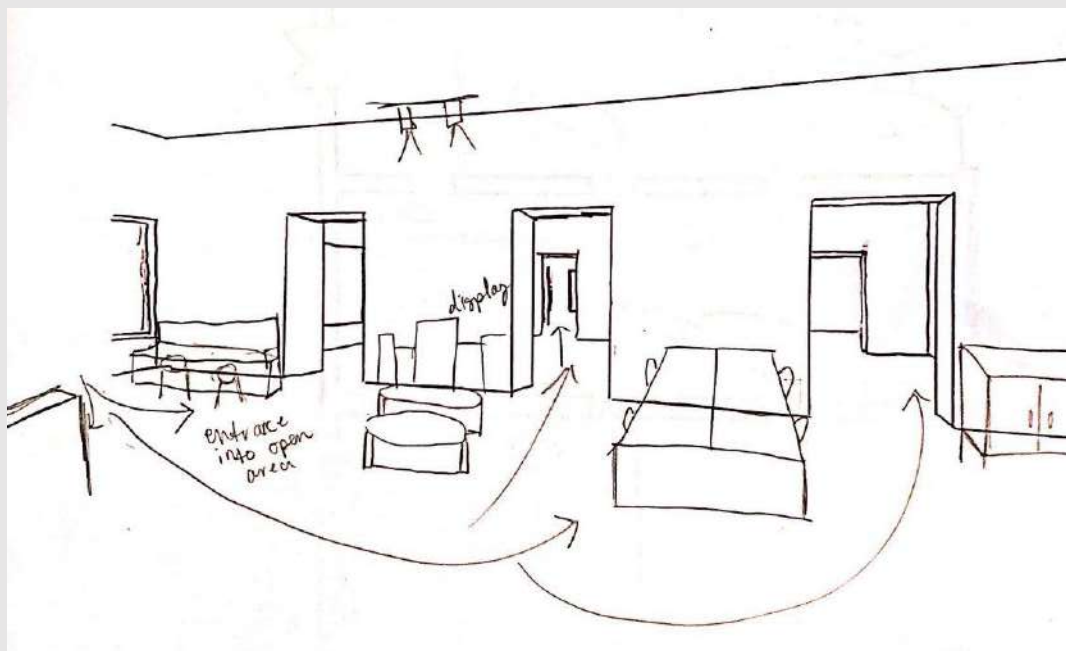
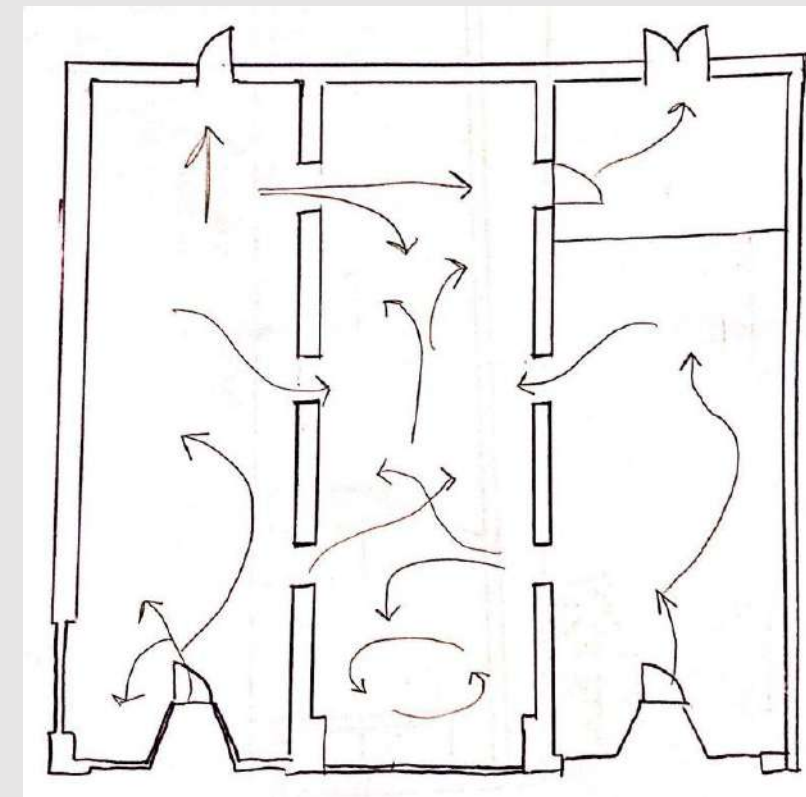
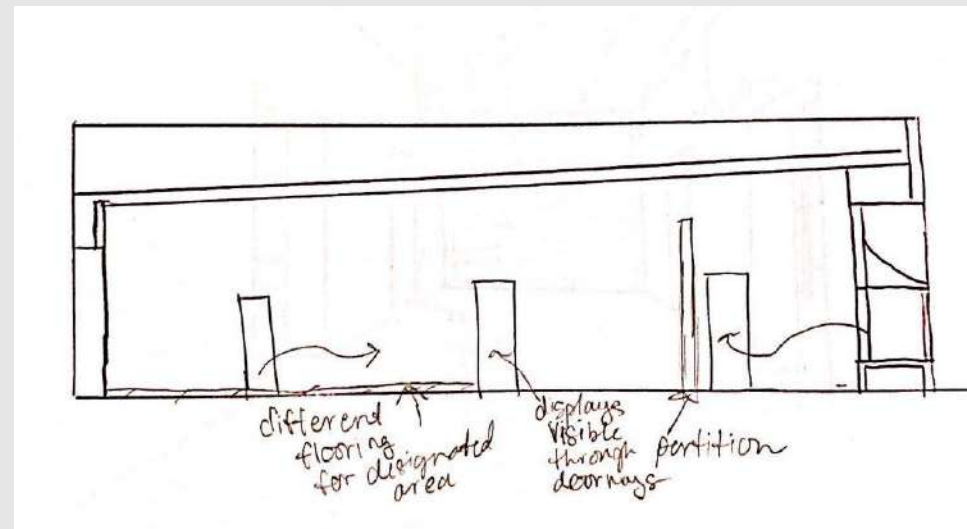
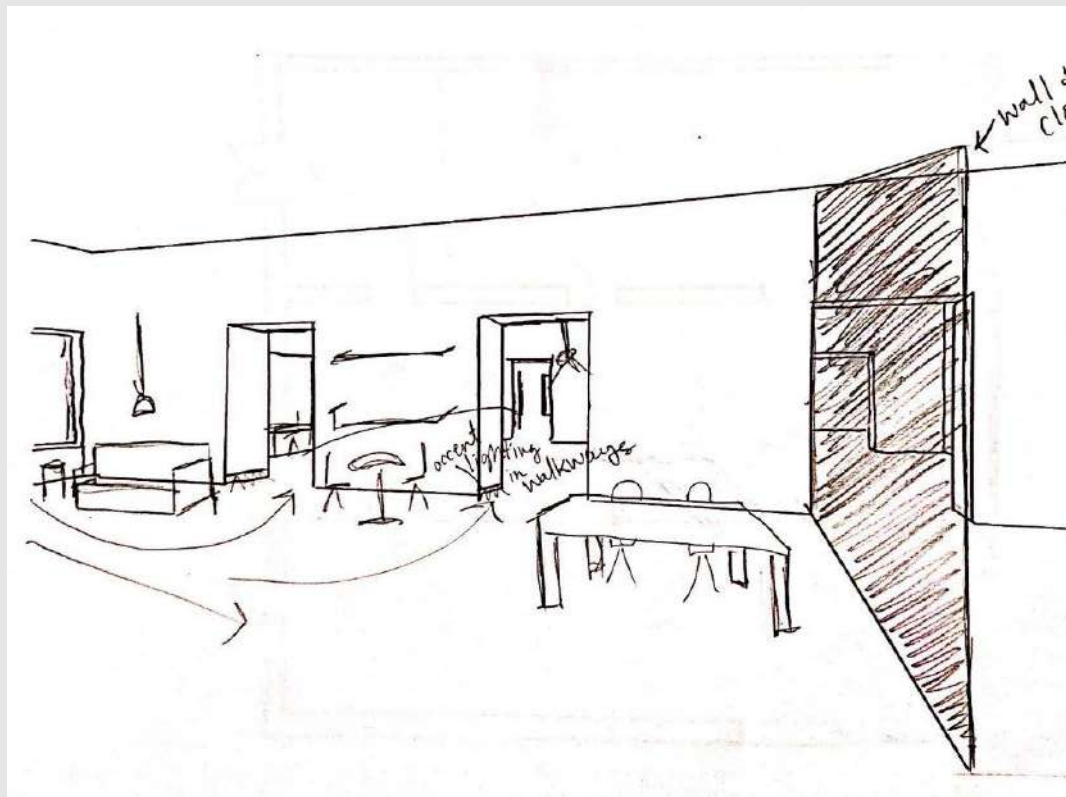




# Space Planning

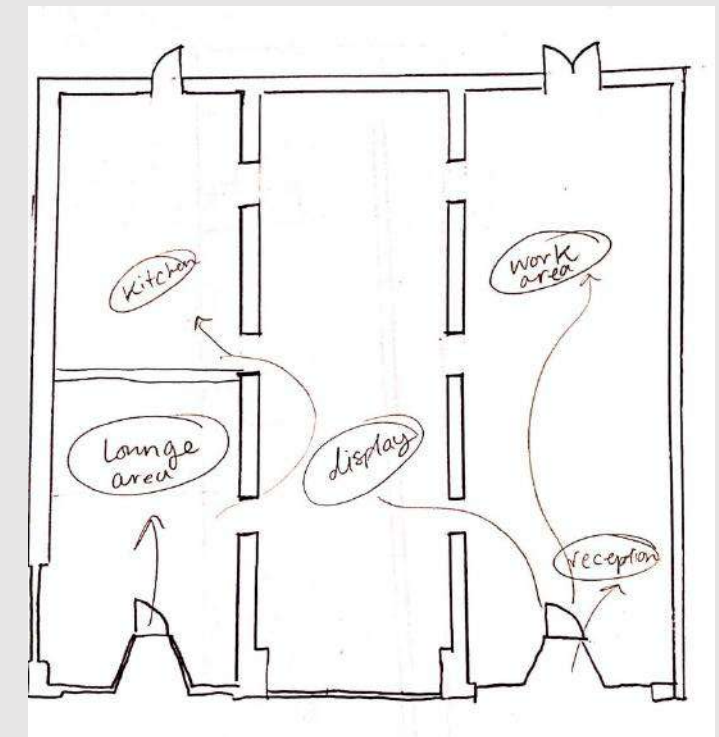
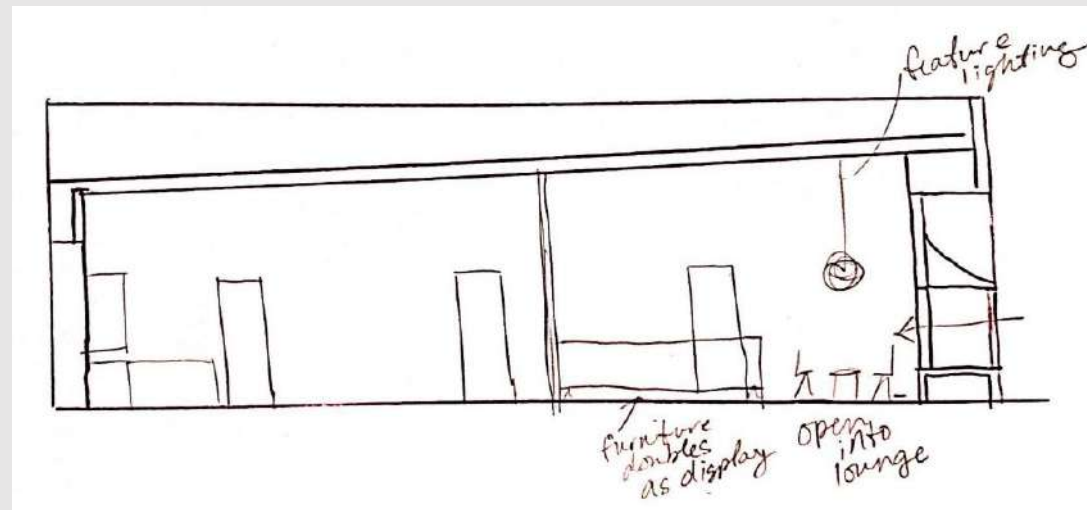
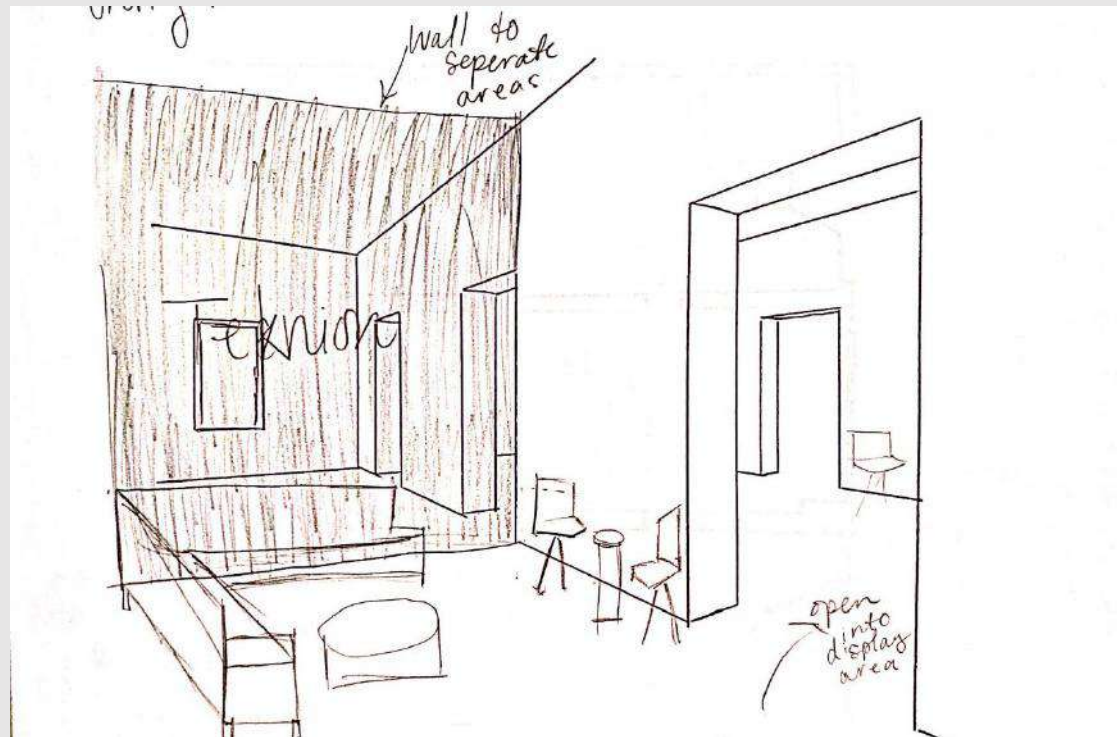
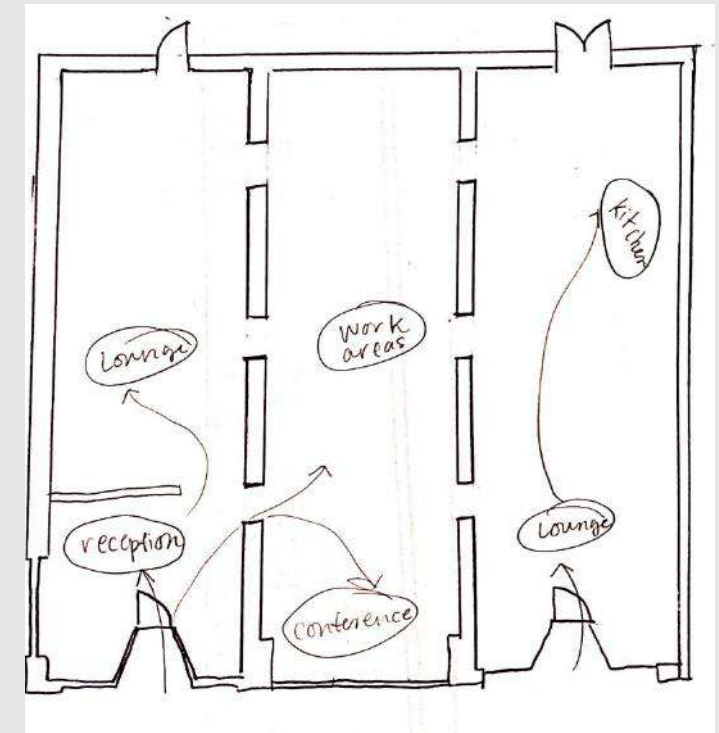
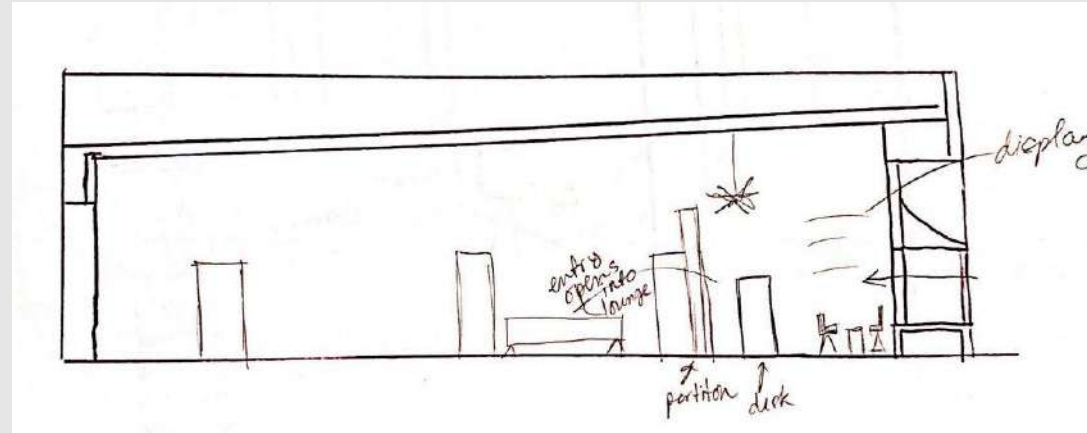
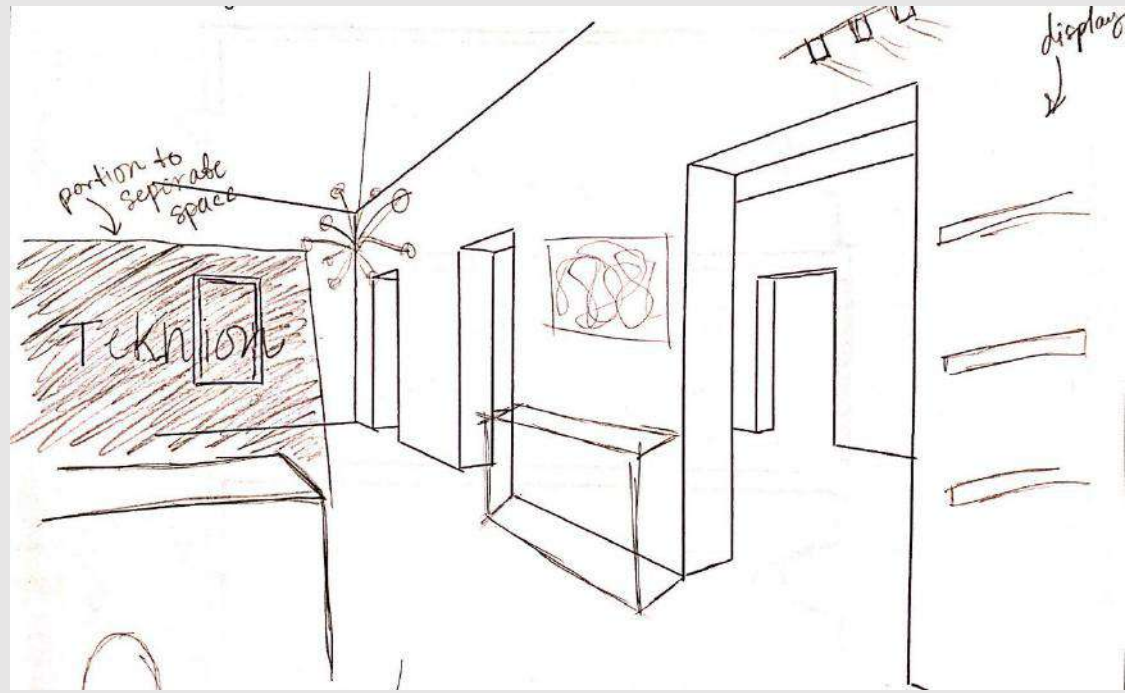


# Wayfinding



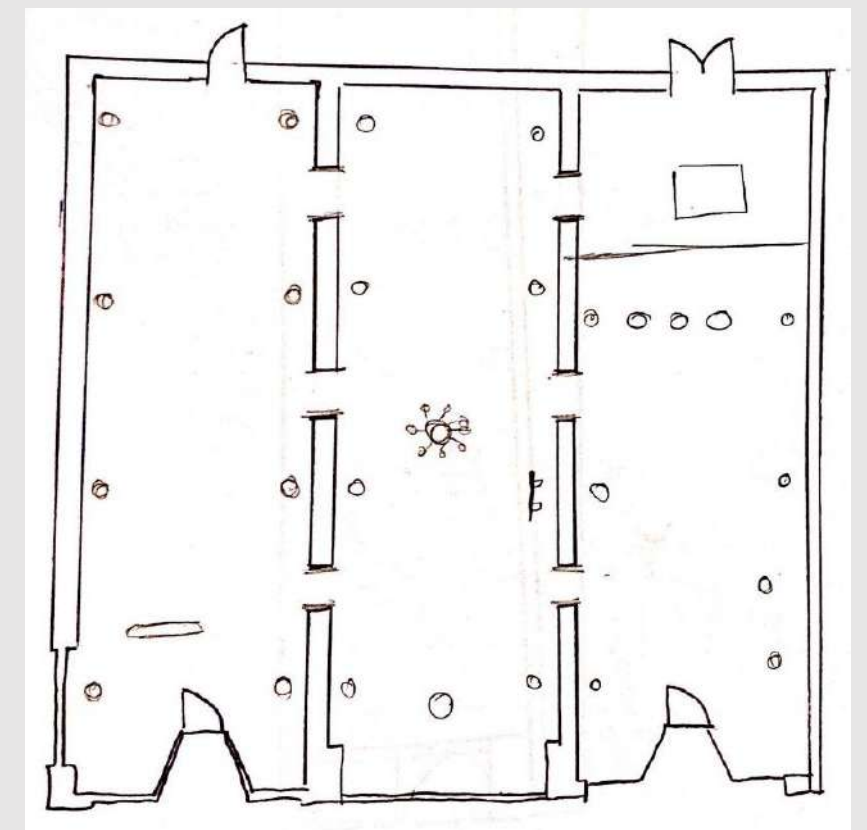
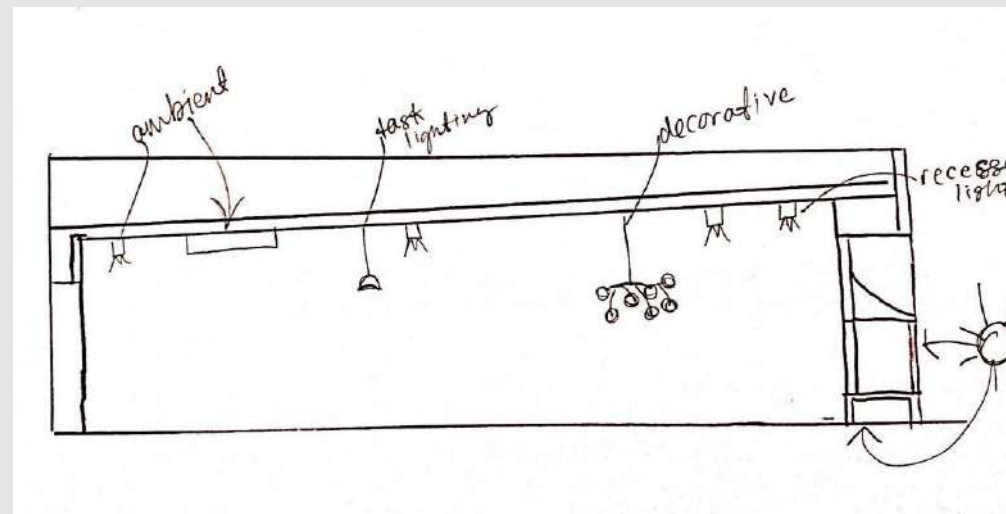
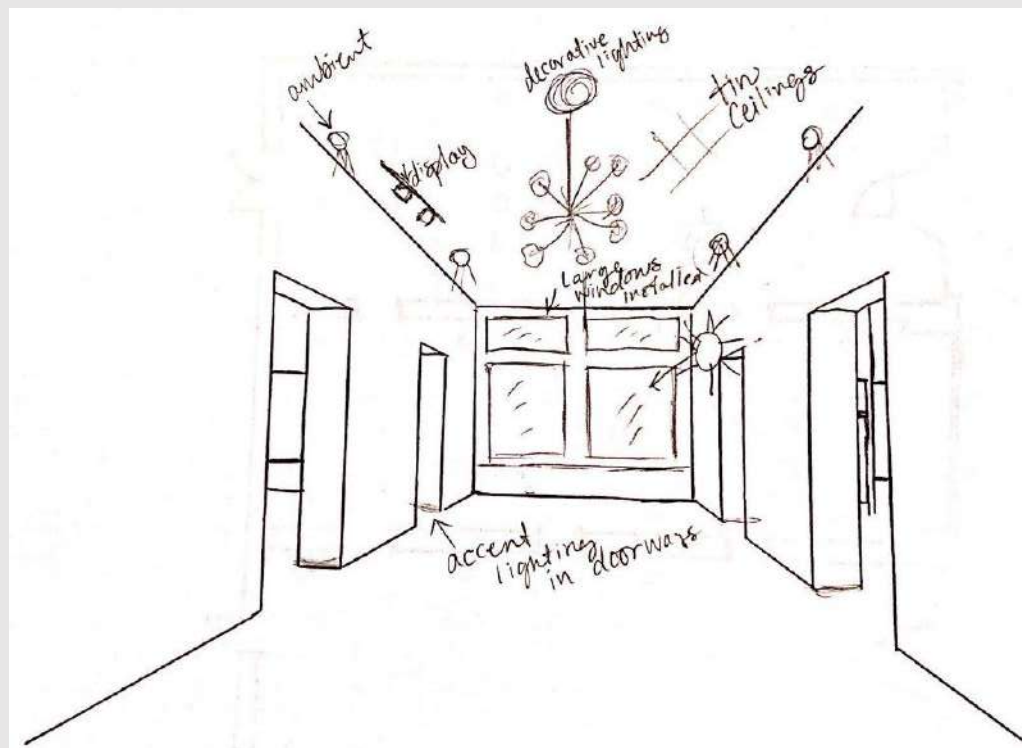
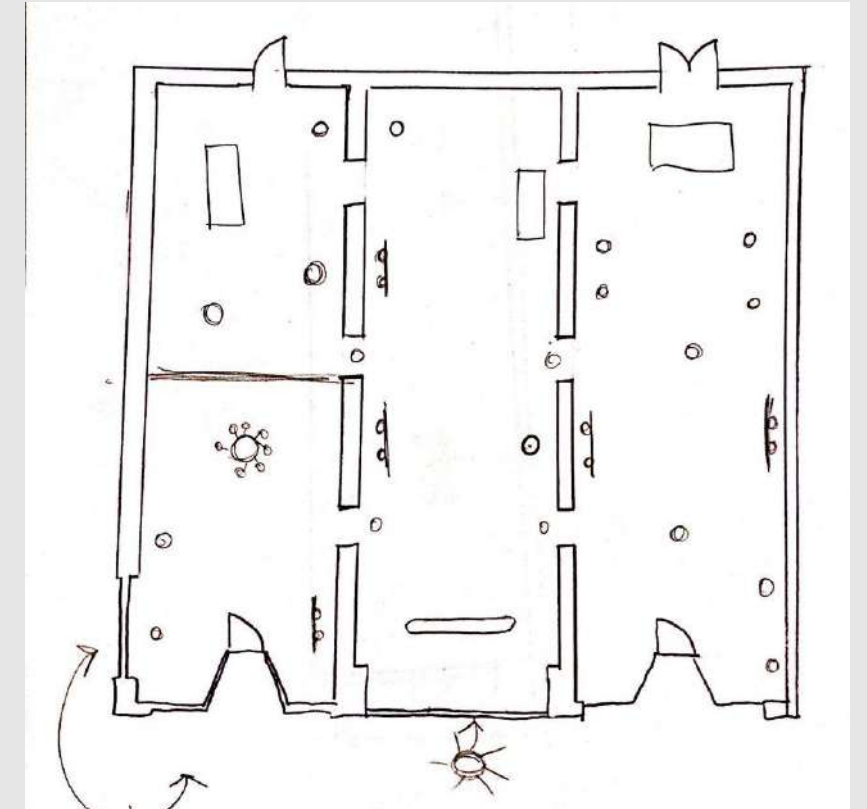
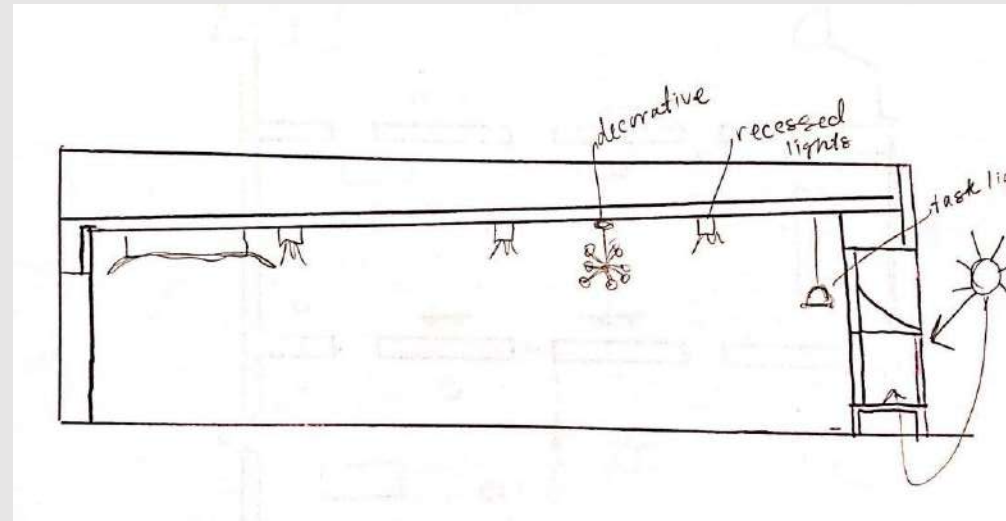
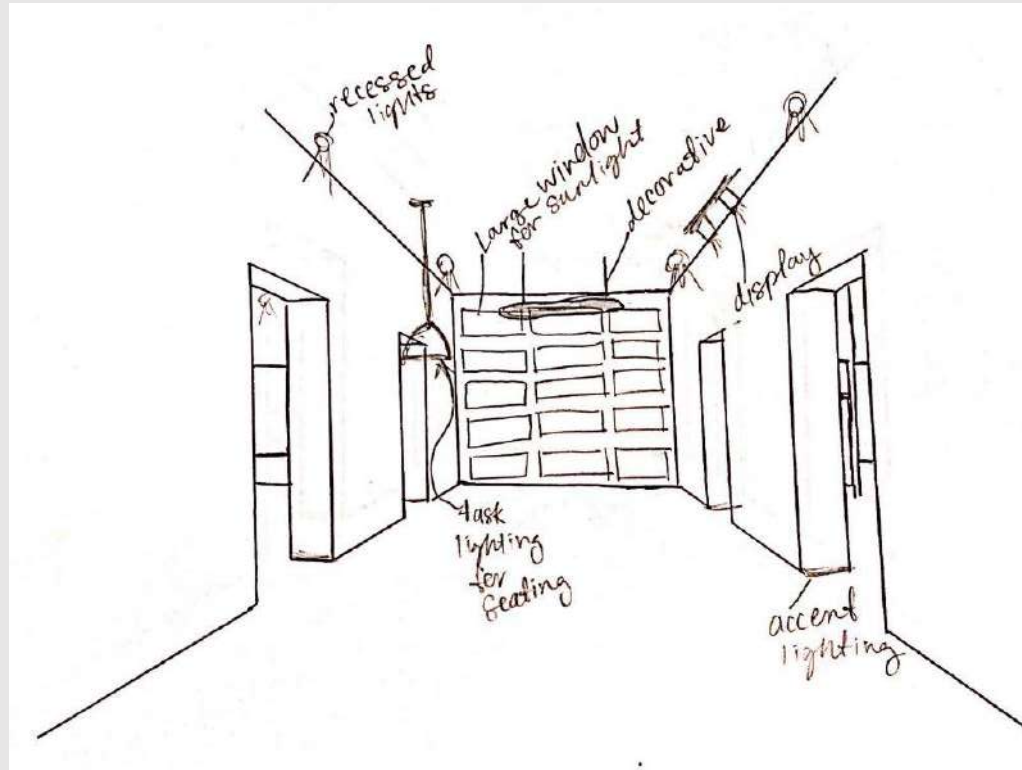


# Entry

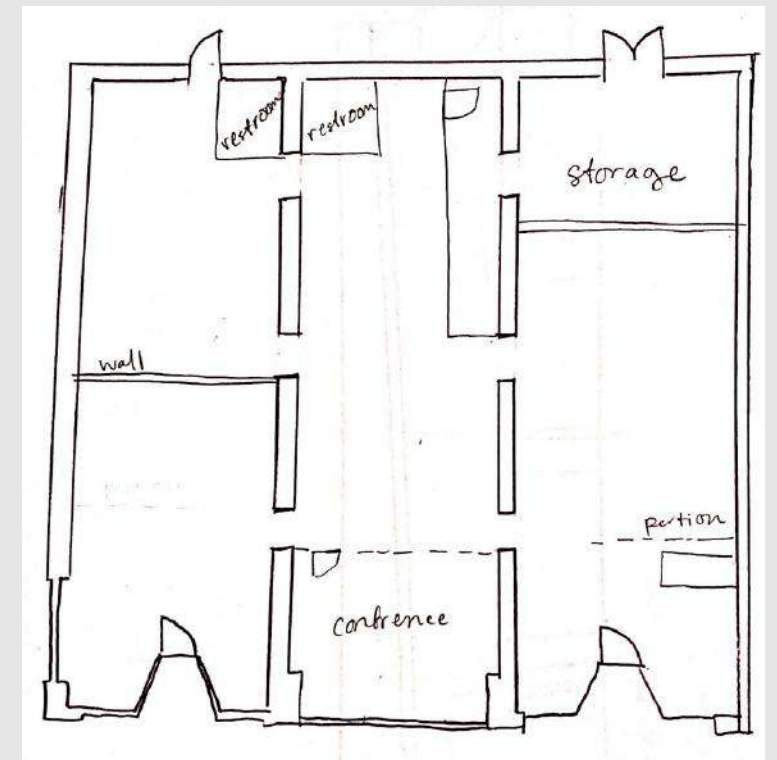
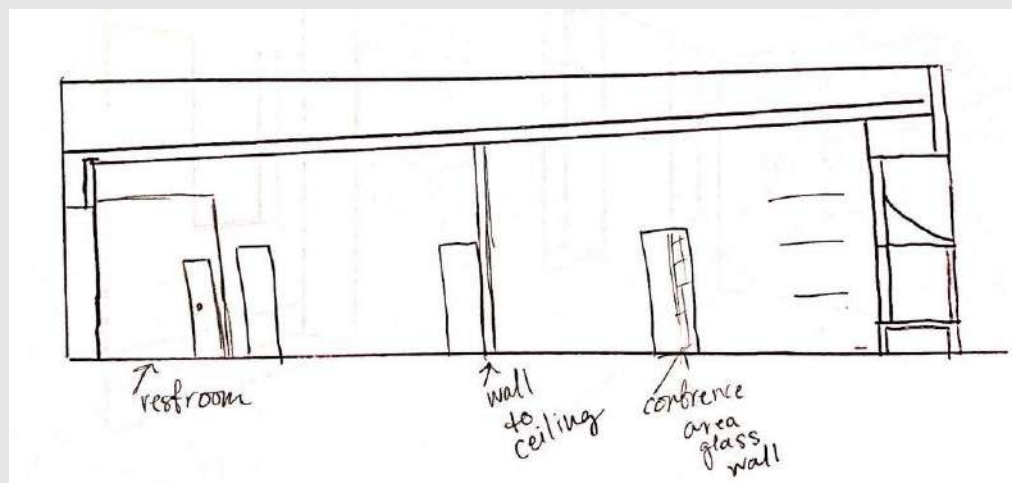
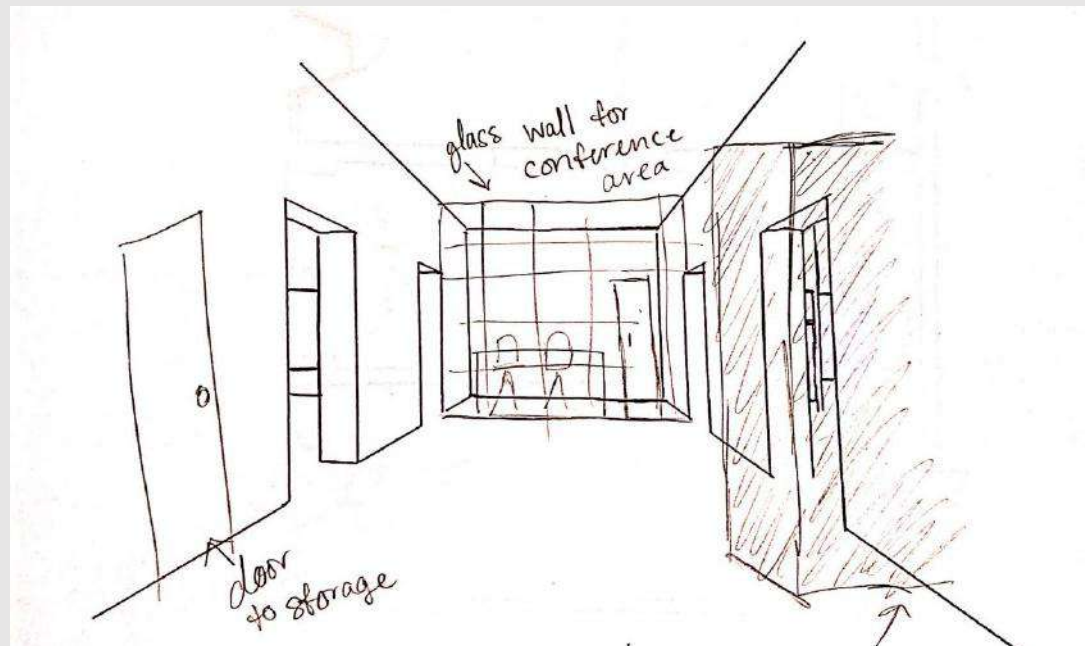
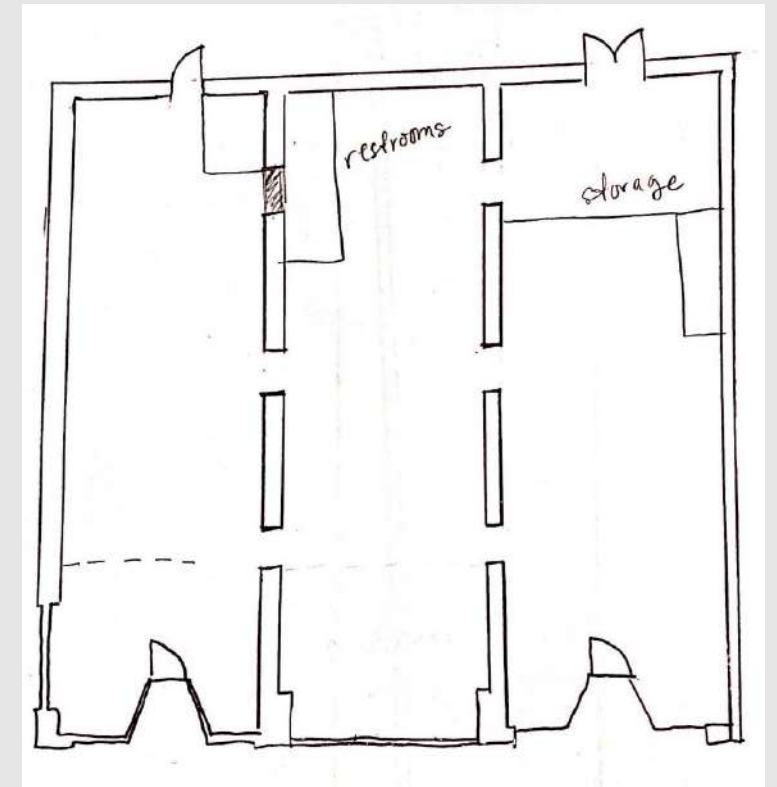
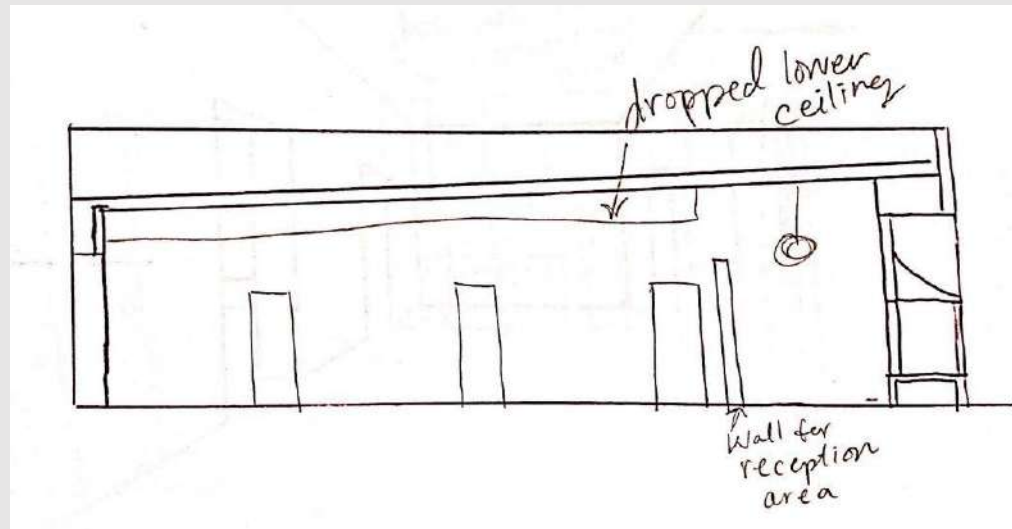




# Ceiling/Daylighting



# Enclosed Volumes





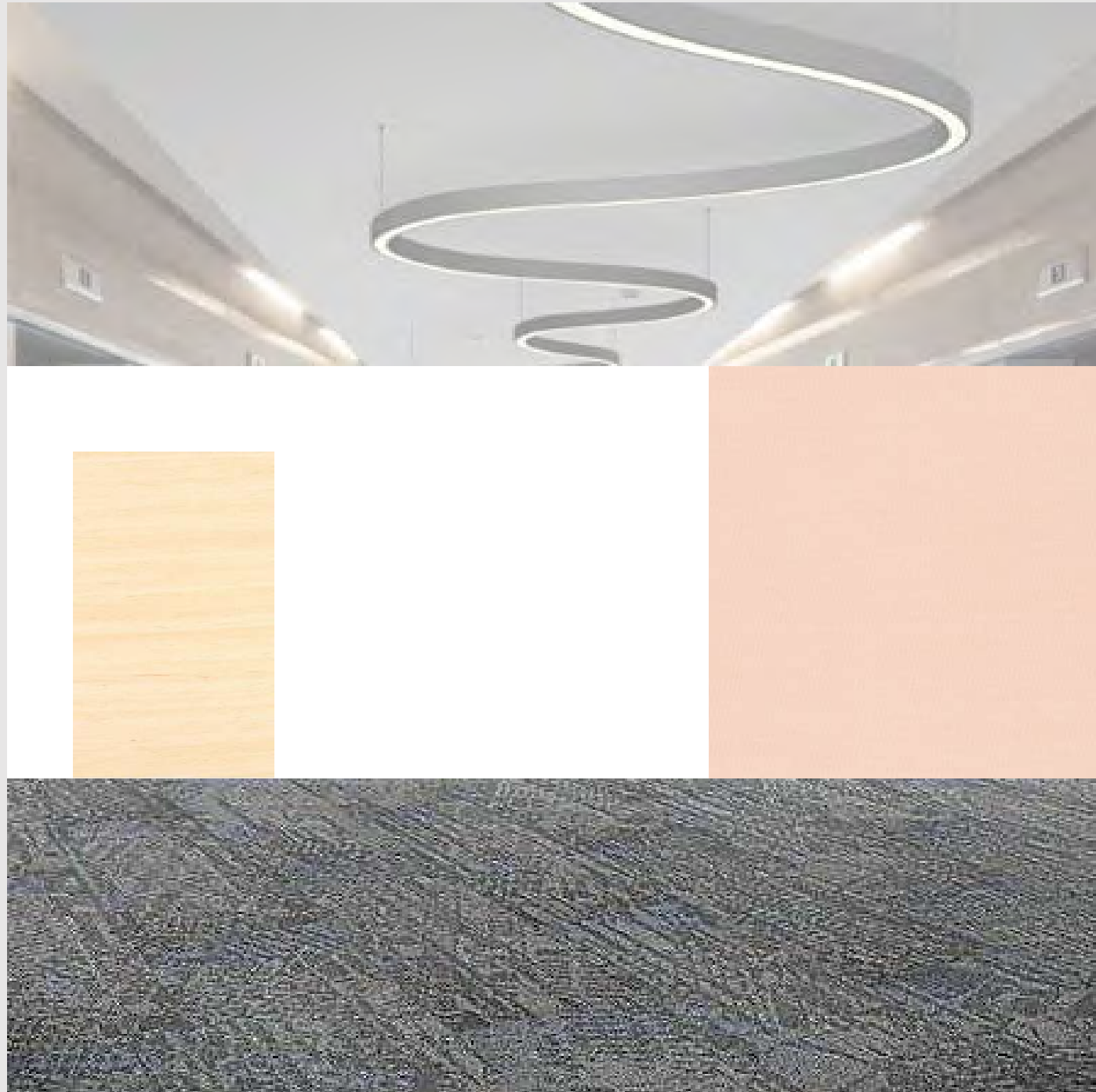
# Finishes: Option 1



Eclectic Modern



# Finishes: Option 2



Modern Chic