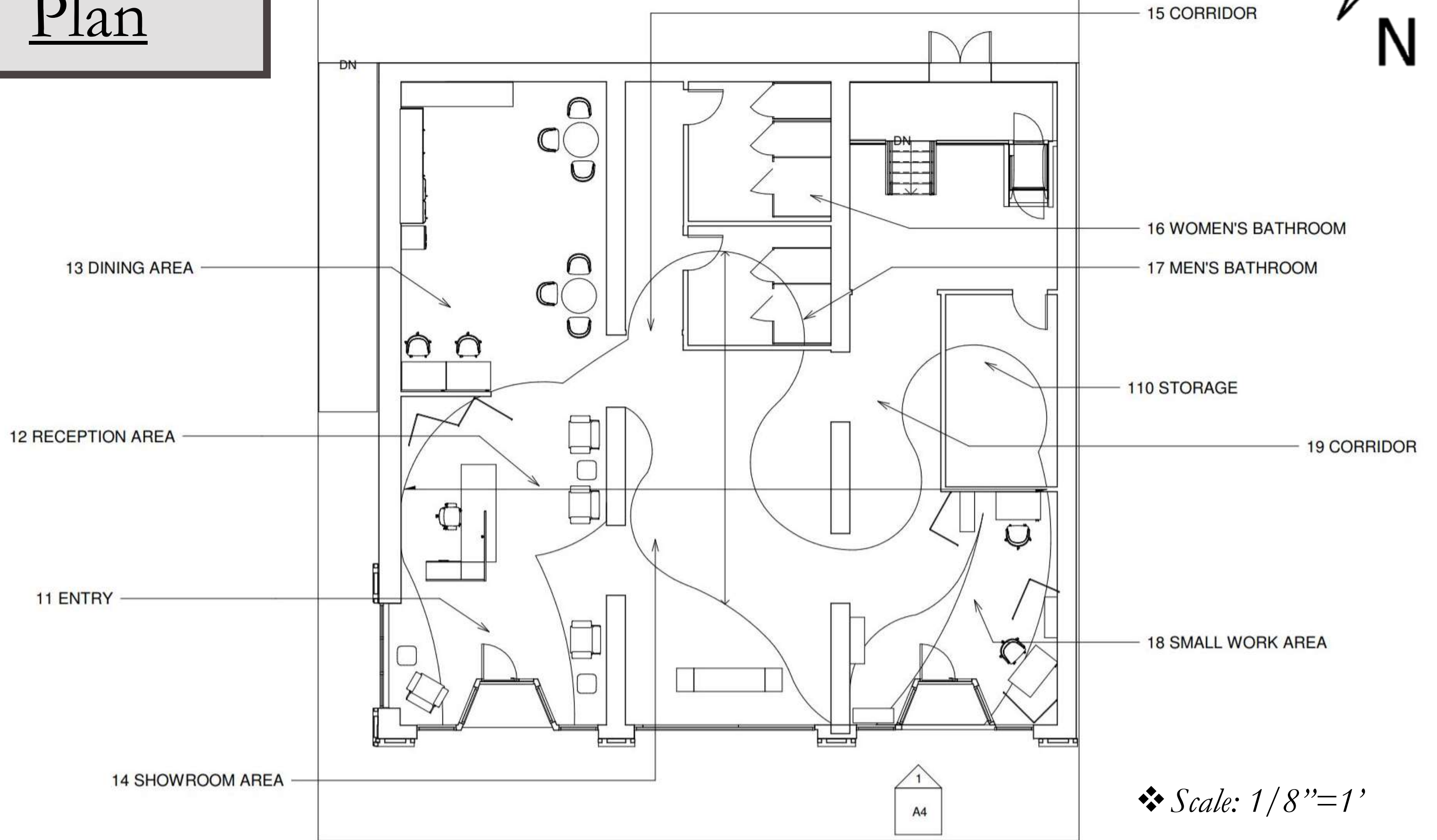


# PORTFOLIO THREE

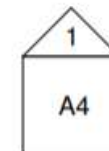
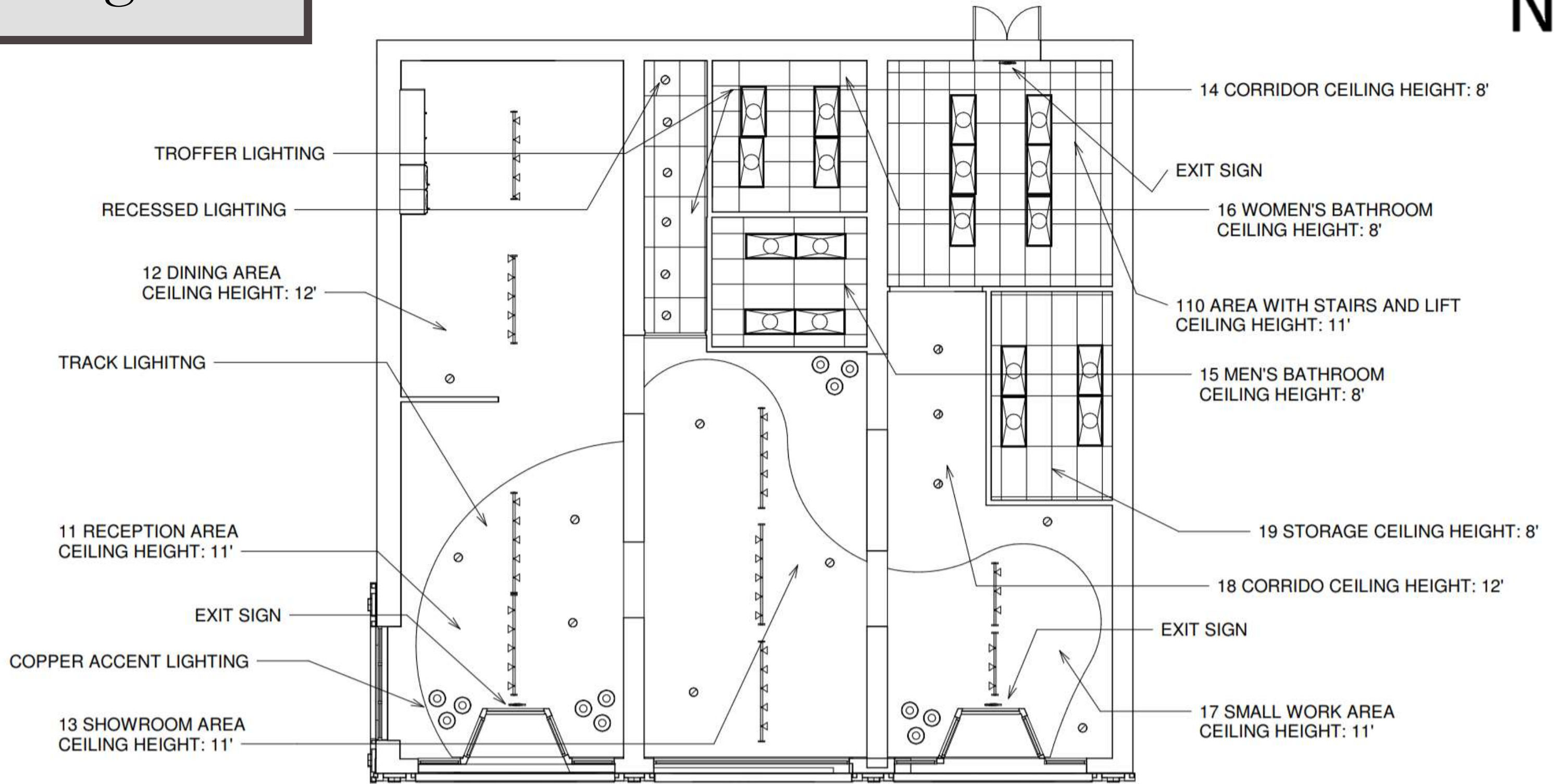
*Tiffany Alexander | IDSN 3102 Fall 2020*



# Furniture Plan



# Reflected Ceiling Plan



❖ *Scale: 1/8" = 1'*



# Rendered Perspectives Option 1



- ❖ *This perspective shows the main entrance into the showroom.*
- ❖ *The desk and chairs are placed for the reception area of the showroom.*



# Rendered Perspectives Option 2



- ❖ *This perspective shows the front of the showroom area for Teknion's furniture.*
- ❖ *There is a large bookcase placed in front of the window to display new items that could entice people who are passing by to come into the showroom.*



# Rendered Perspectives Option 3



- ❖ *This perspective shows the other entry or exit for the showroom.*
- ❖ *The screens are placed so that they hide the work stations for the employees.*

# Design Concept

*Historic  
Tobacco  
Warehouse  
in  
Greenville*



- ❖ Greenville, North Carolina has several historic districts. Because of how important these districts are to the town, their tobacco warehouse district was what inspired the concept of the Teknion showroom.
- ❖ Many of these warehouses have been repurposed and turned into storefronts. This leads to a more sustainable option and preserves the history of the town.



*Dickinson  
Avenue  
Antique  
Market  
that was  
built in  
1912*

# Color Rationale

- ❖ *The color pallet that was chosen compliments the industrial style of the showroom.*
- ❖ *The white washed brick brings in the industrial style of the historic warehouses, brightens the space, and it allows the furniture to be the main focus.*
- ❖ *Copper accents bring a pop of color into the space and were also chosen because historically copper was used in buildings for electrical wiring.*





# Furniture and Finishes

## ❖ *The **Reception Area** has*

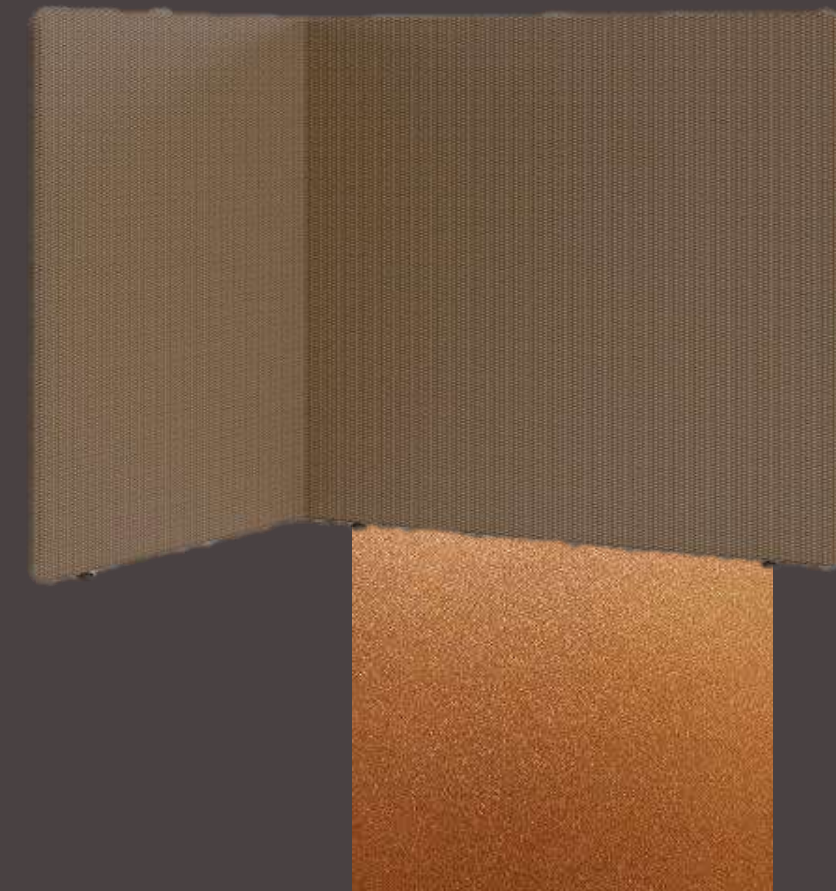
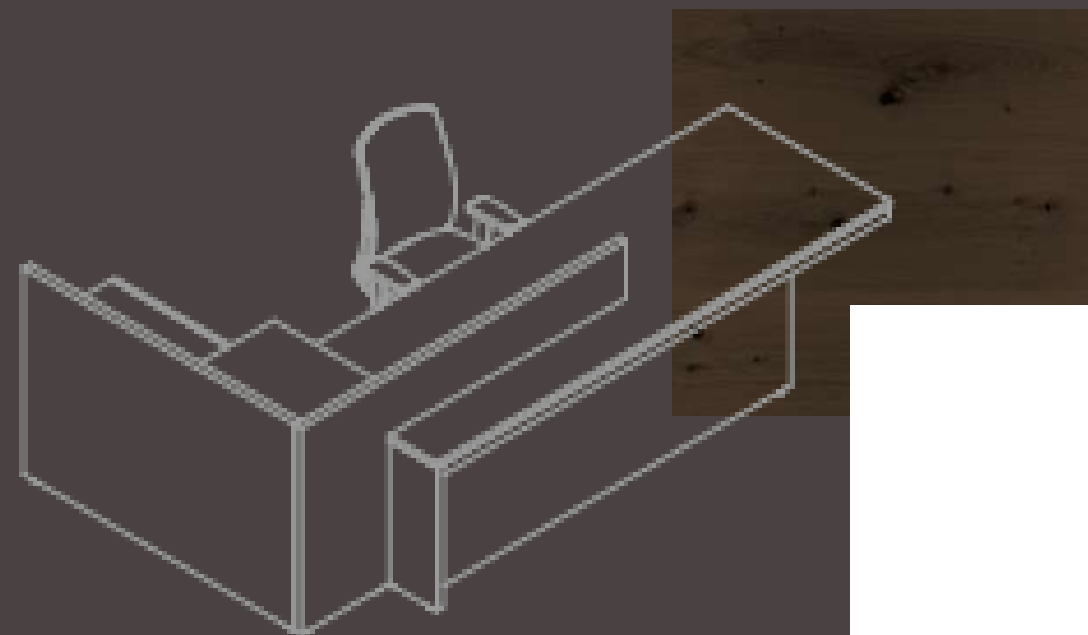
- *4 Envita lounge chairs*
- *3 Envita square coffee tables that are 15" high*
- *1 classic reception desk with L-return layout*
- *2 Borough Screens*

❖ *The copper is carried through the space by the screens in the showroom.*

❖ *The leather warms the space and is a more durable fabric for the reception space.*

❖ *The blue suede is an accent chair color that contrasts itself from underneath the copper lighting.*

## *Reception Area*



# Furniture and Finishes

❖ *The Dining Area has*

- *6 Clip metal legged chairs*
- *2 Havn round occasional tables*
- *2 Navigate height adjustable rectangular desks*
- *2 Clip 5 star track chairs*

❖ *The seafoam color was chosen as a lighter accent in the kitchen, where the natural light doesn't shine through.*

*Dining Area*



# Furniture and Finishes

❖ *The **Small Work Area** has*

- *3 Navigate height adjustable rectangular desks*
- *2 Clip 5 star track chairs*
- *1 Expansion Cityline bookcase with metal dividers 15" depth*
- *1 Expansion Cityline beam mounted cabinet open*
- *3 Borough Screens*

*Small Work Area*

