



Portfolio 3

IDSN 3102

Rebekah Fry

Furniture Plan



105 WOMENS' RESTROOM

104 MENS' RESTROOM

103 CORRIDOR

102 CAFE

101 SEATING AREA

100 ENTRANCE

113 BACK OF THE HOUSE

112 STORAGE

111 WORK AREA

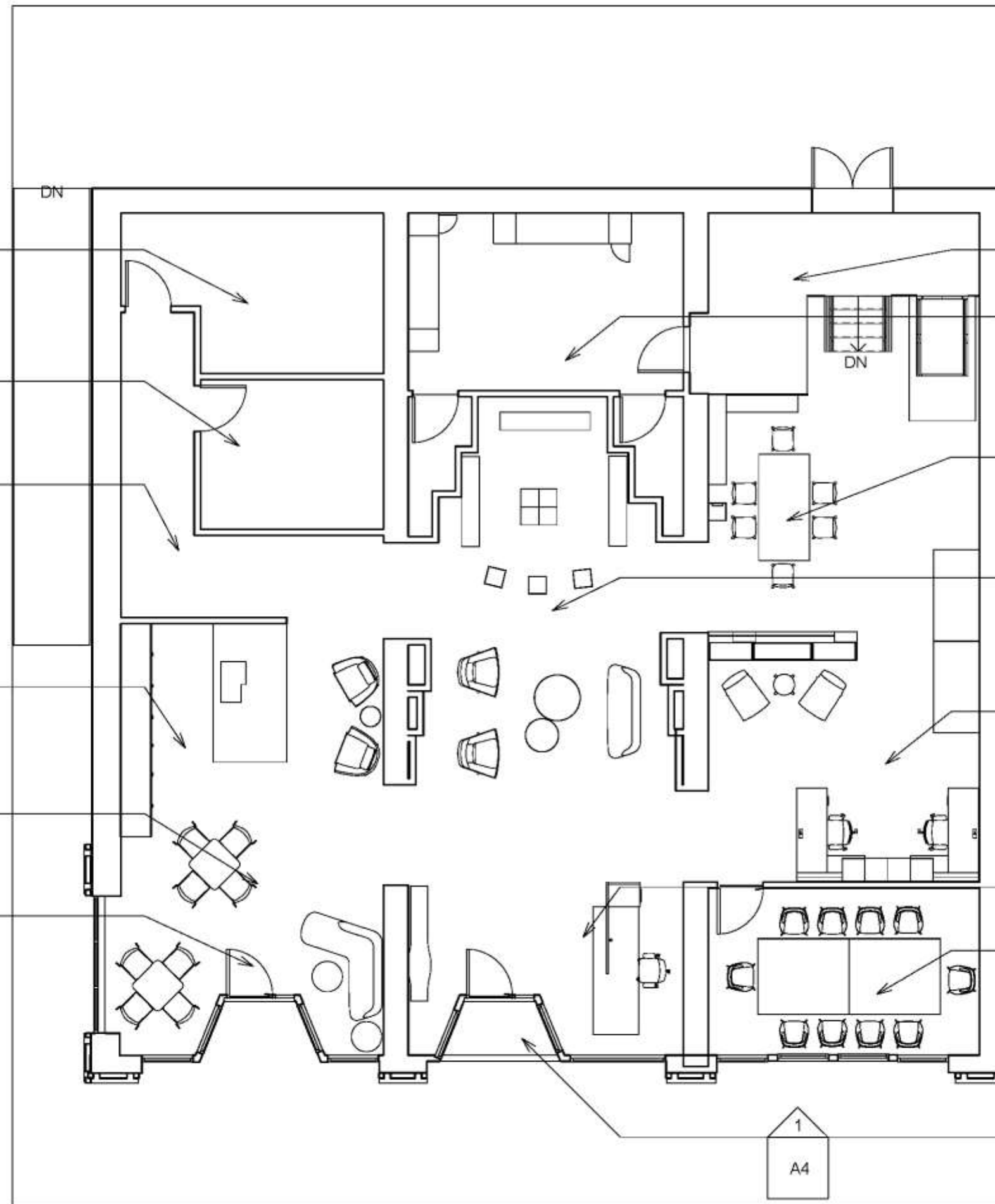
110 SHOWROOM

109 WORK AREA

108 RECEPTION

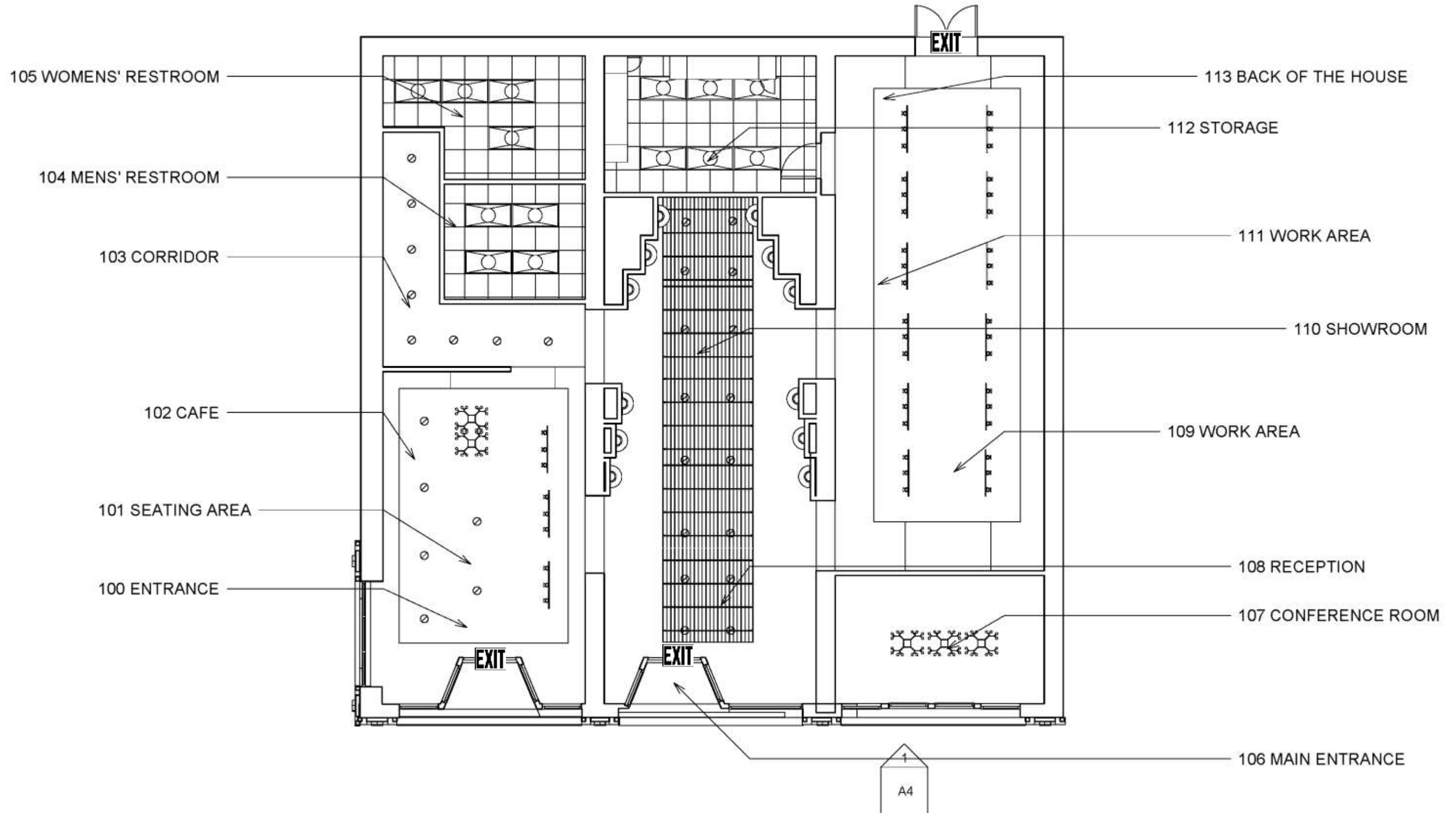
107 CONFERENCE ROOM

106 MAIN ENTRANCE



① Floor
1/8" = 1'-0"

Reflected Ceiling Plan



Rendering Perspectives 1



Rendering Perspectives 2



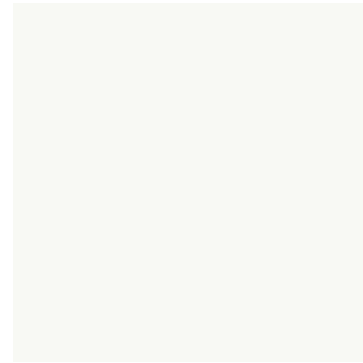
Rendering Perspectives 3



Rendering Perspectives 4



Furniture and Finishes



Concept

Sustainability in historic preservation is very important in our modern world. New construction can be very harmful to the earth. While using an old downtown building in the city of Greenville and creating a new space within, is a great way to save our planet.



The new space of the building will hold a Teknion showroom. This space will contain a showroom, workspace, café, and all the amenities of a working professional space. Due to the pandemic regulations the showroom will enforce social distancing, and will have hand sanitizer at every entrance.

Color Rationale

The color rationale of the space is contemporary modern. The walls are all white to bring a clean feel, with the floors having a nice contrast of black reflected concrete. The color is brought through the Teknion furniture which highlights the product.

