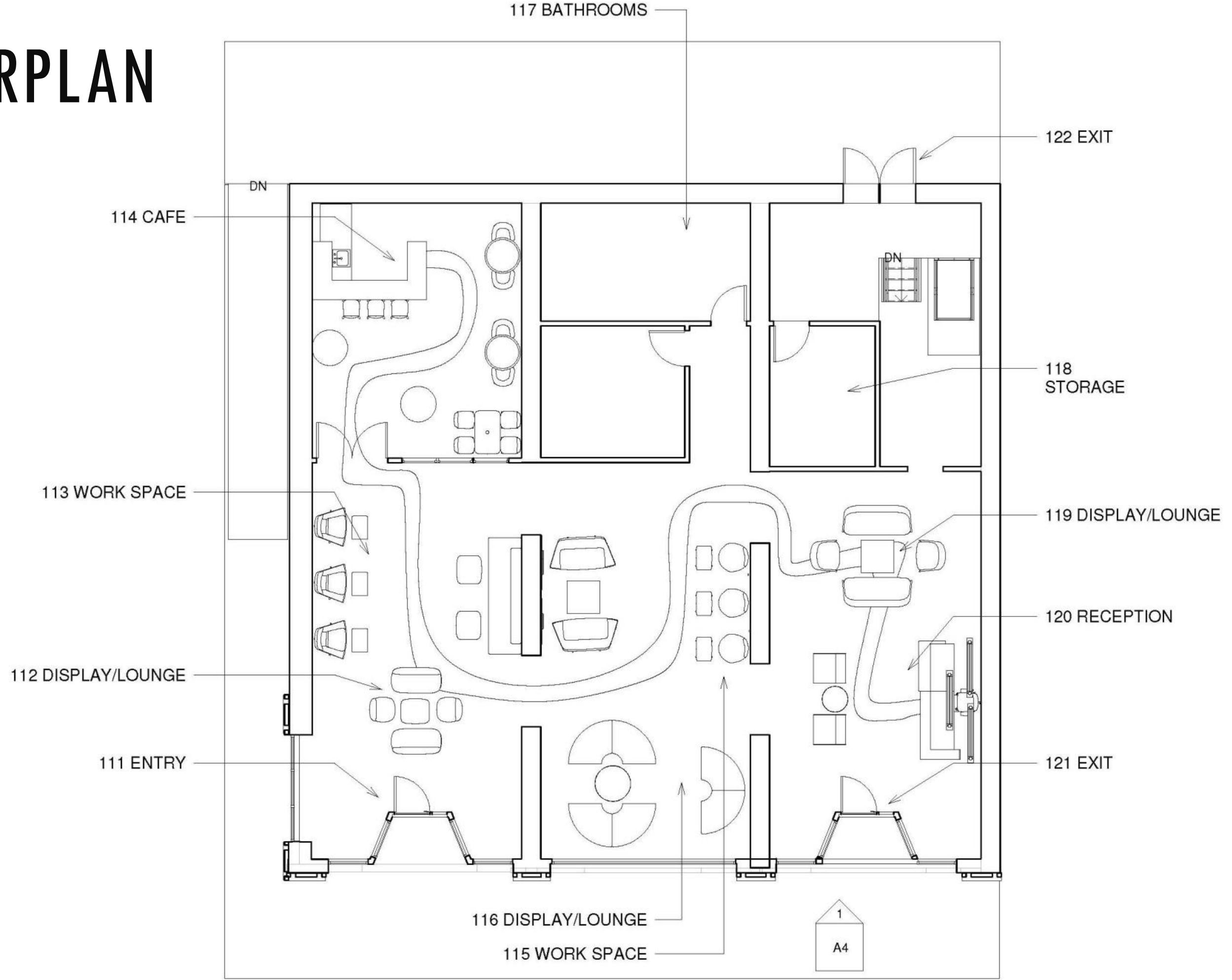


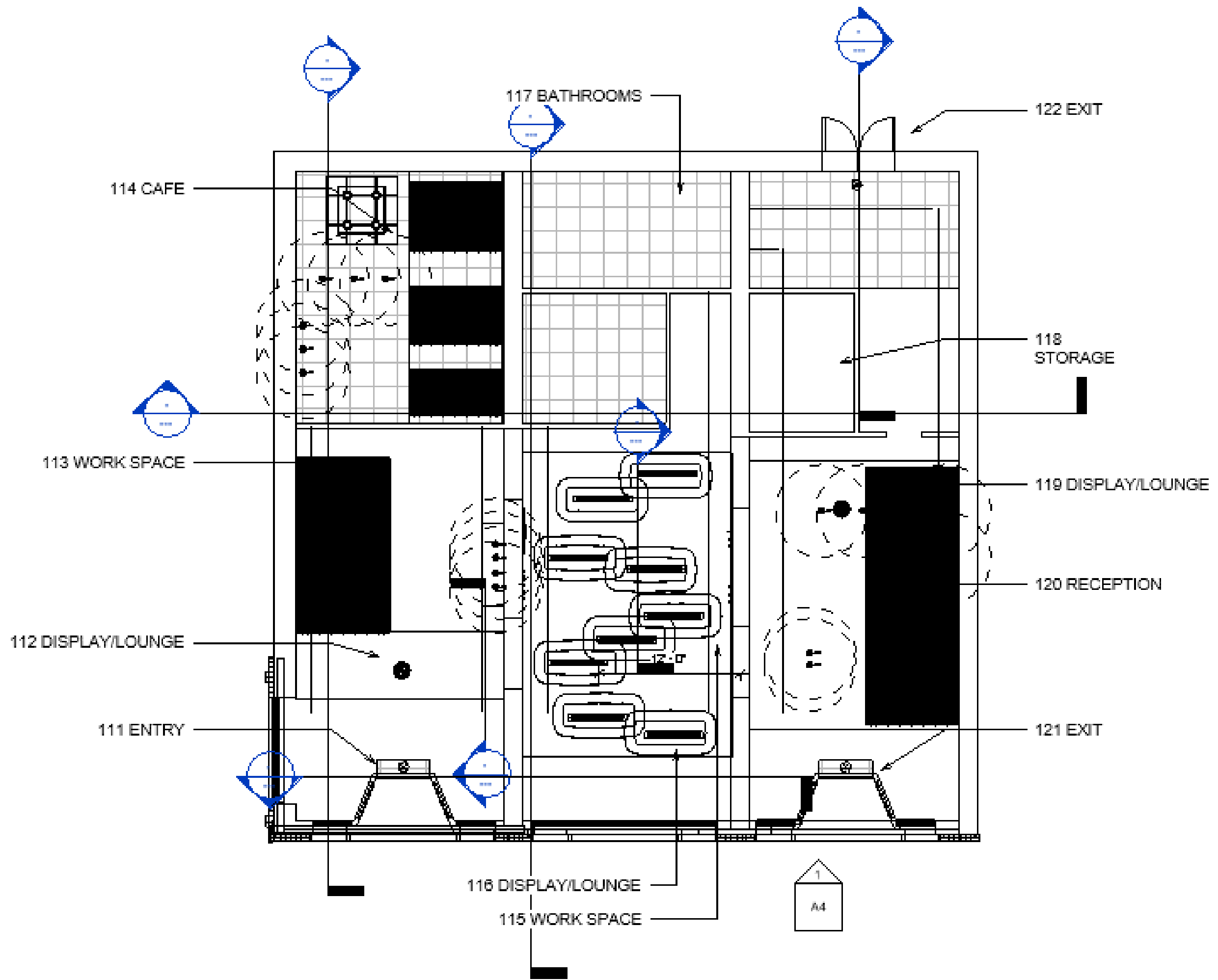
# TEKNION DESIGN CHALLENGE

JORDAN MCLEOD  
IDSN 3102  
FALL SEMESTER 2020

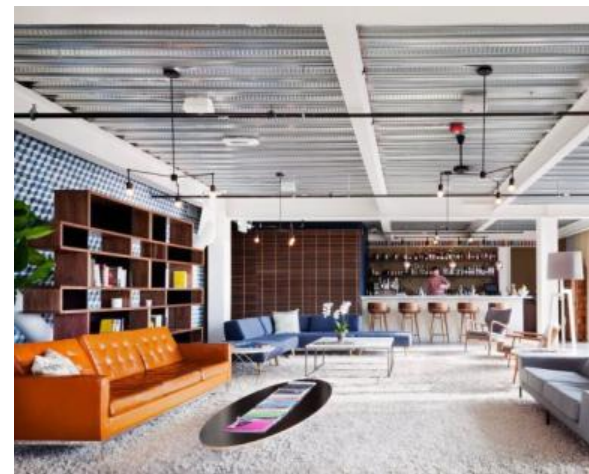
# FLOORPLAN



# RCP



1 Floor  
1/8" = 1'-0"

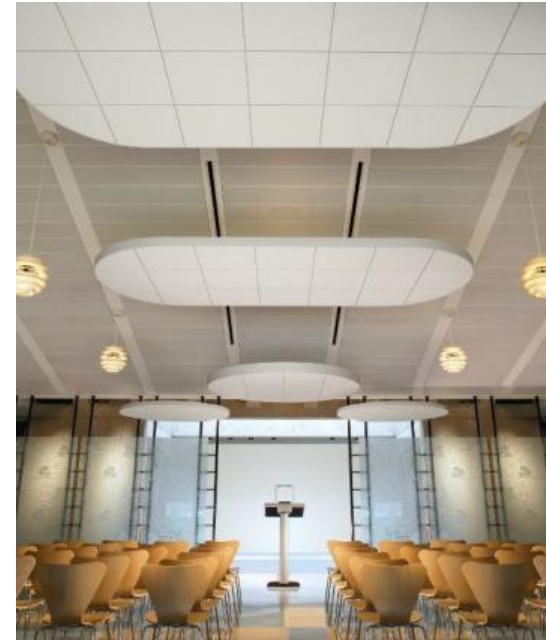


# THE EYE OF THE STORM

During a time when we have all been kept apart, this showroom can be utilized as a place of coming together safely. While Covid, the “storm,” rages on, this showroom, the “eye,” provides a fun and energetic atmosphere where clients, students, and professionals can come to make connections with peers.

# COLOR RATIONALE

- A triadic color scheme is used in order to bring an energetic and refreshing feel to the space. Provides variability and interest.
- Blues: dark thunderclouds and rain that accompanies a hurricane
- Pink/orange: sunlight peaking through the eyewall of the hurricane
- Blue and pink furniture will be used while yellows will be used in accent walls and flooring.



# 3D PERSPECTIVES



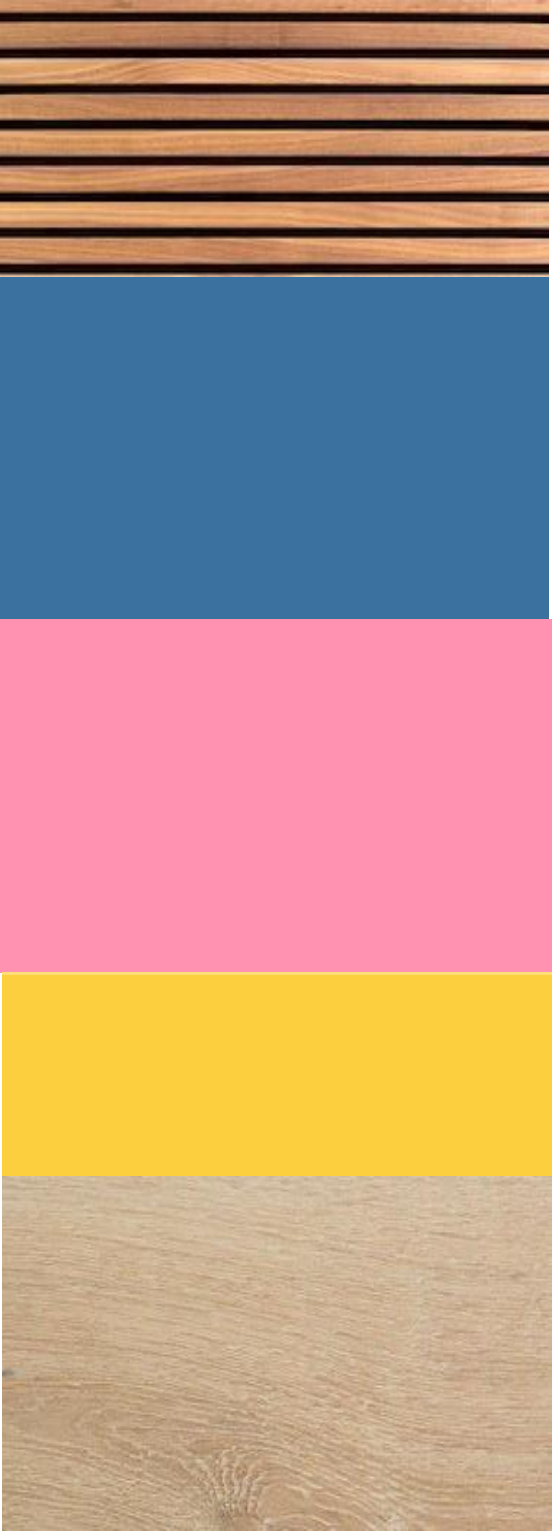
Reception

Cafe

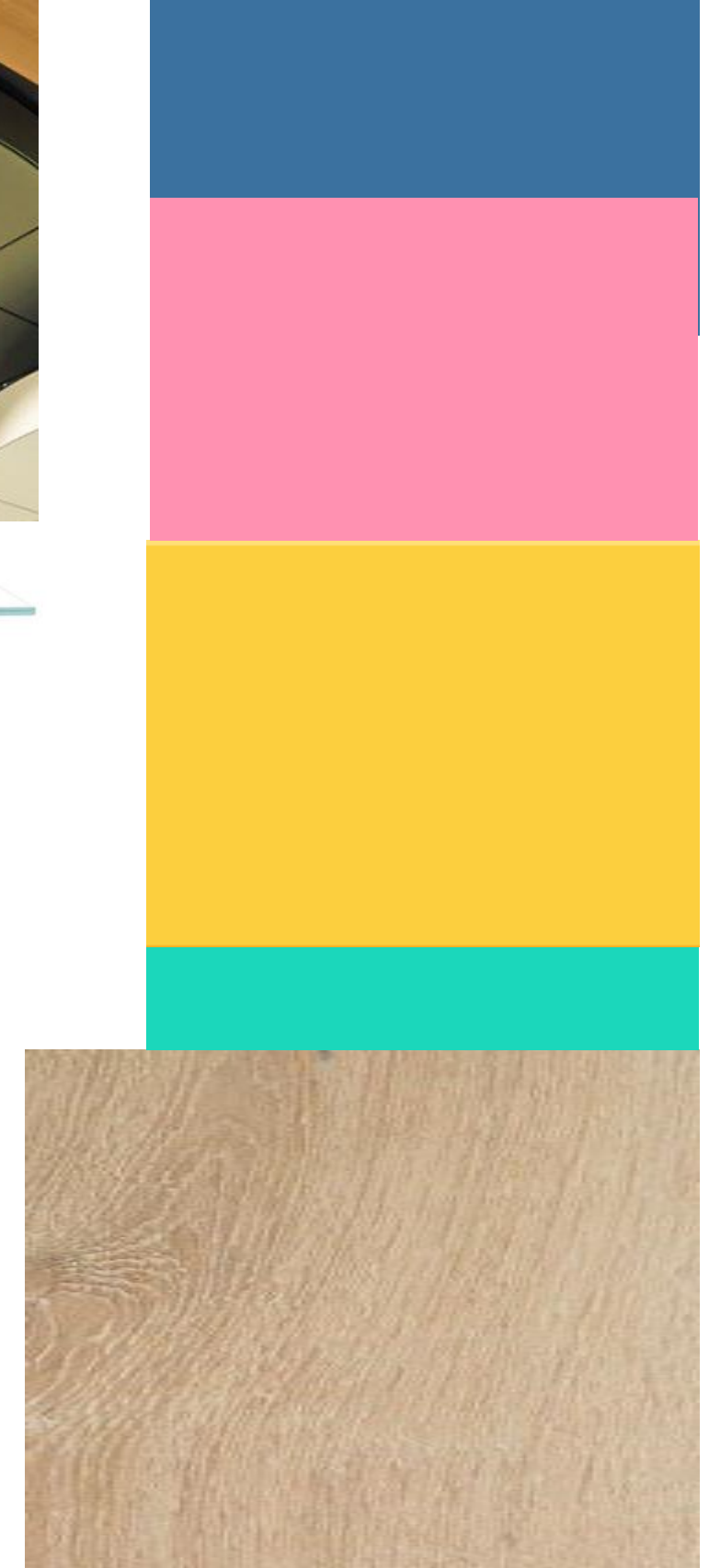


Center Lounge

# RECEPTION FINISHES/MATERIALS



# CENTER LOUNGE FINISHES AND MATERIALS





# CAFÉ FINISHES AND MATERIALS

