

Teknion Design Challenge

Portfolio 3

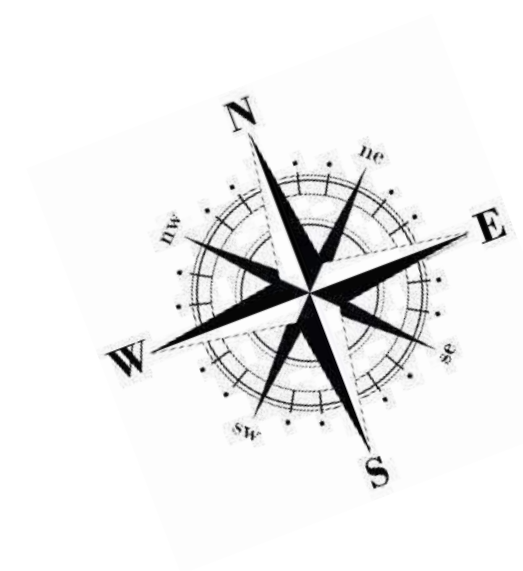
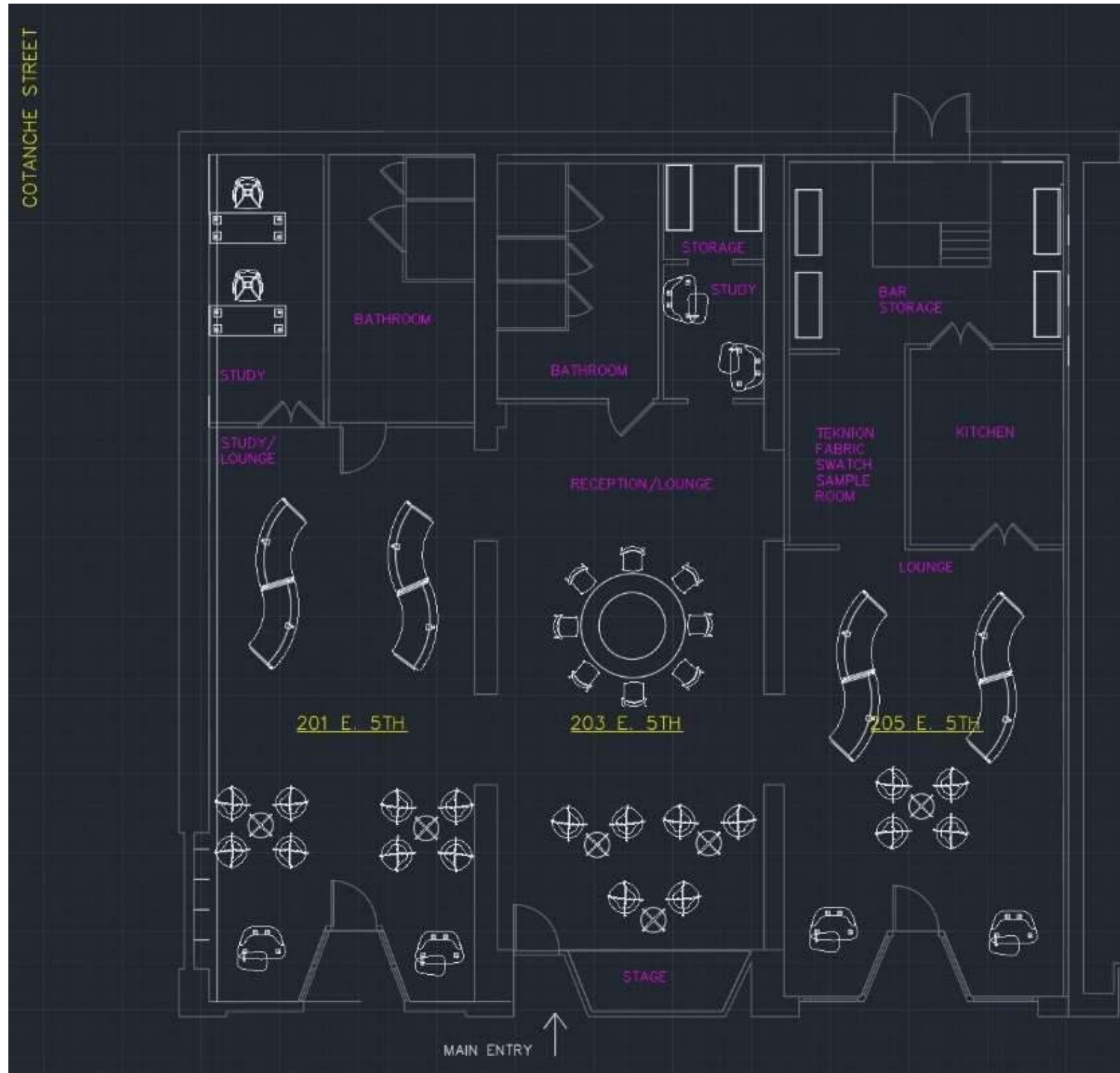
IDSN Studio 3102

Fall Semester 2020

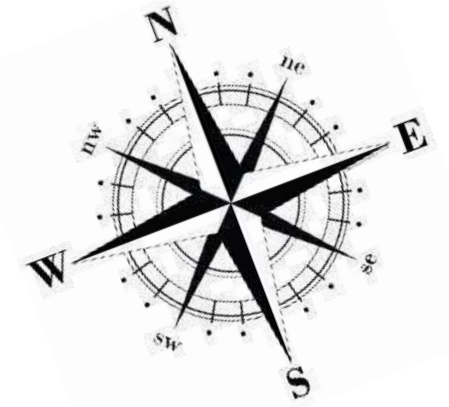
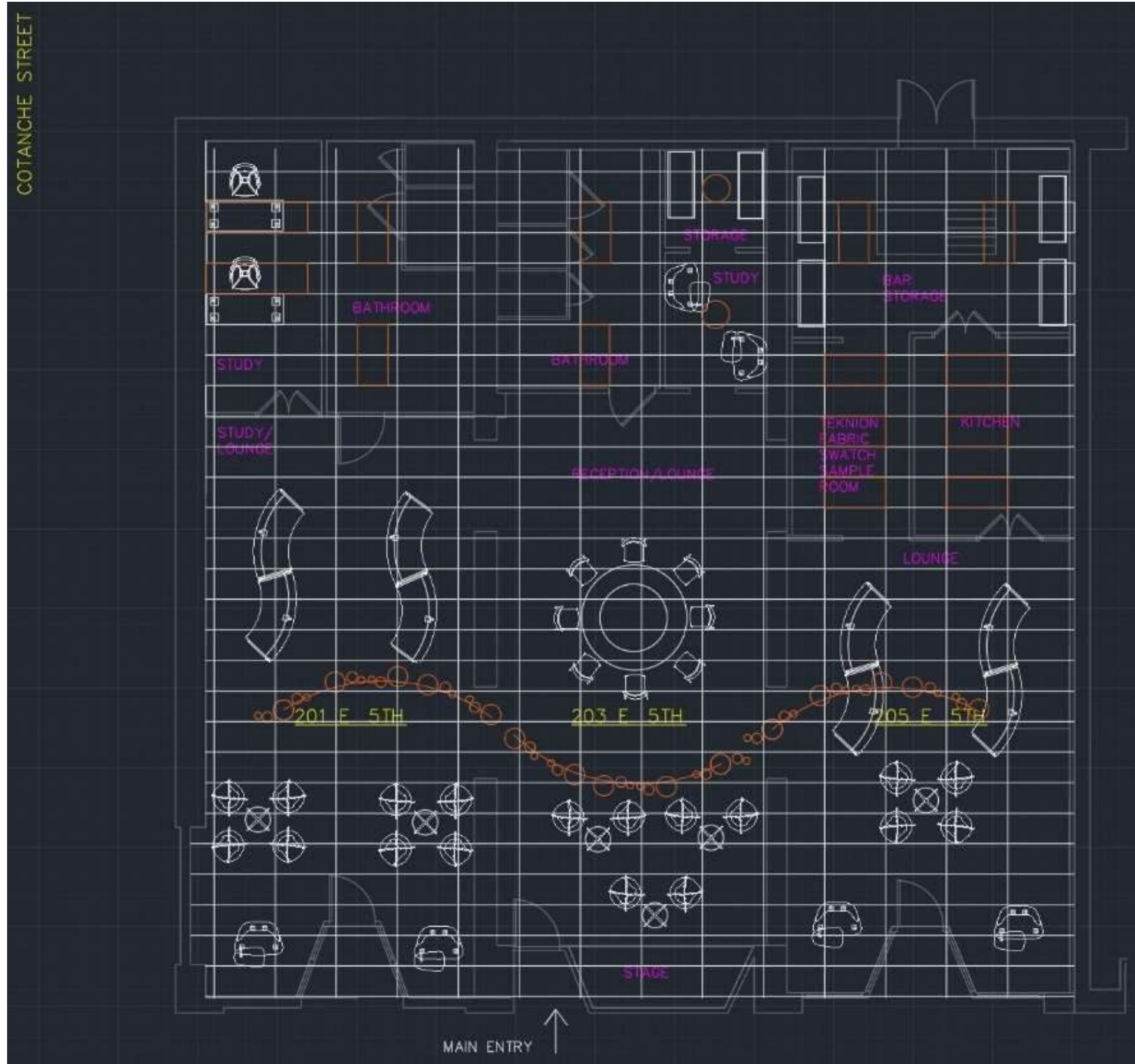
Anna Overton



Furniture Plan



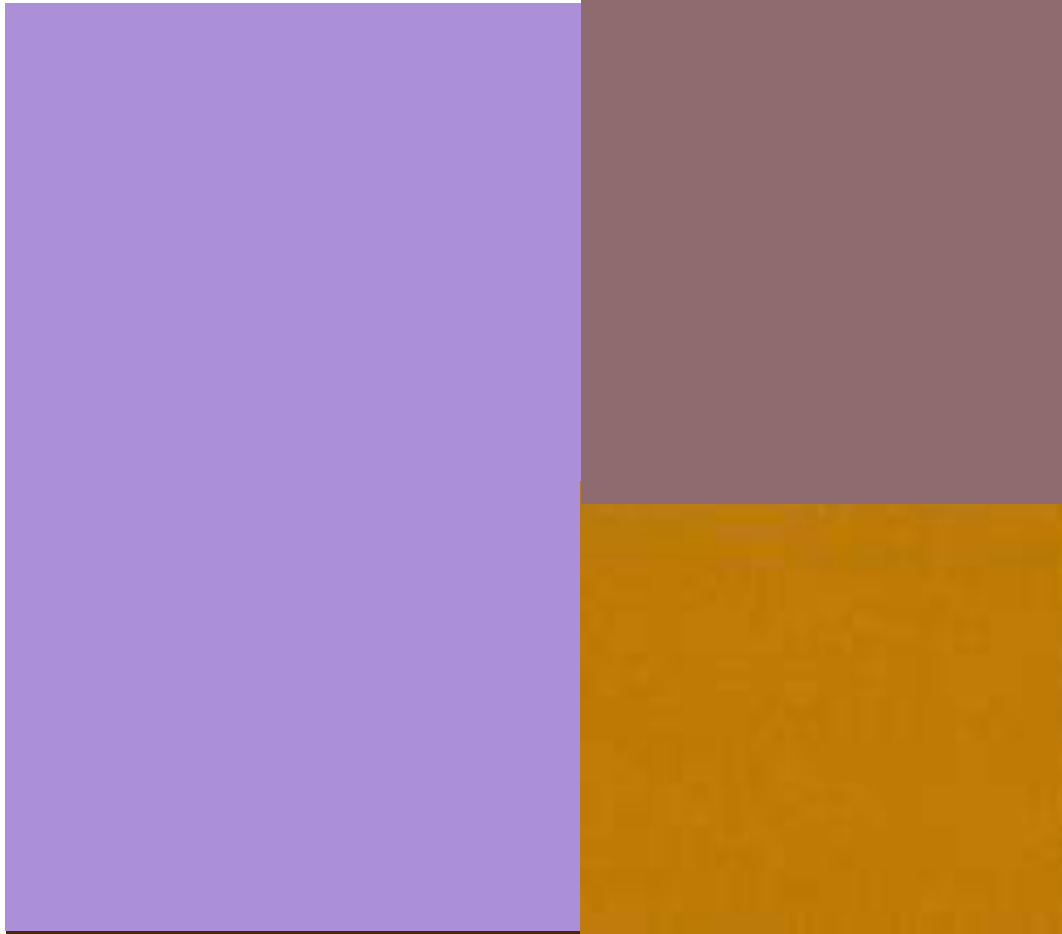
Reflected Ceiling Plan



Rendered Perspectives

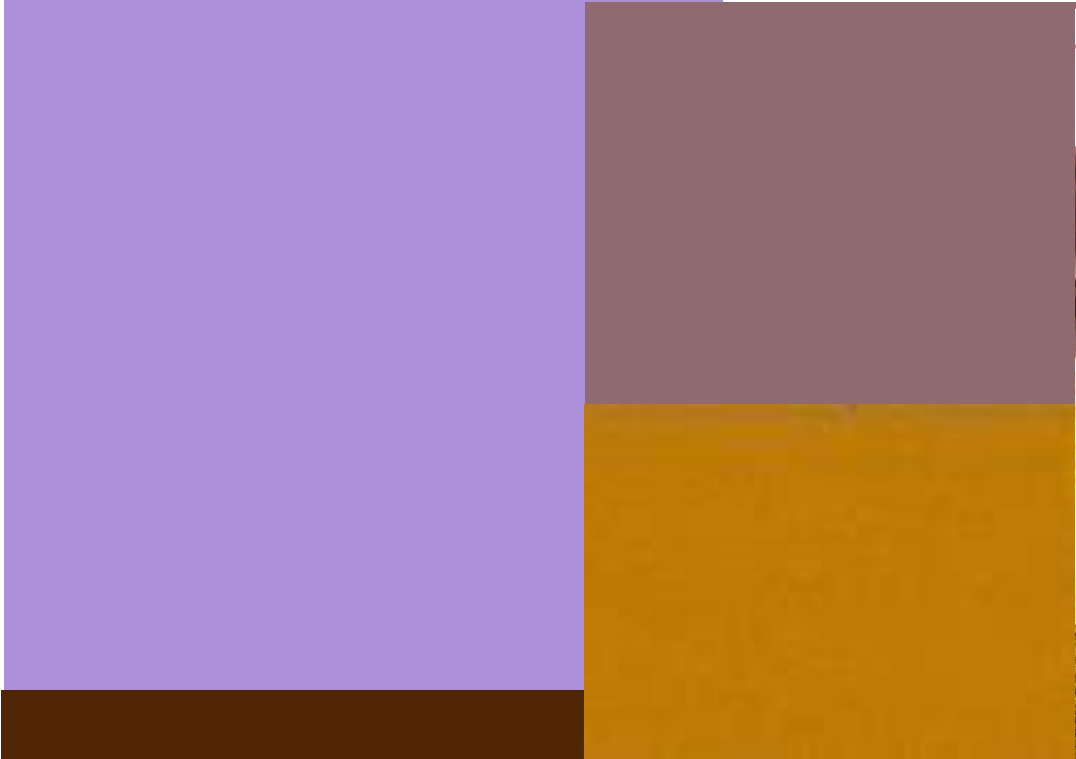


Furniture and Finishes



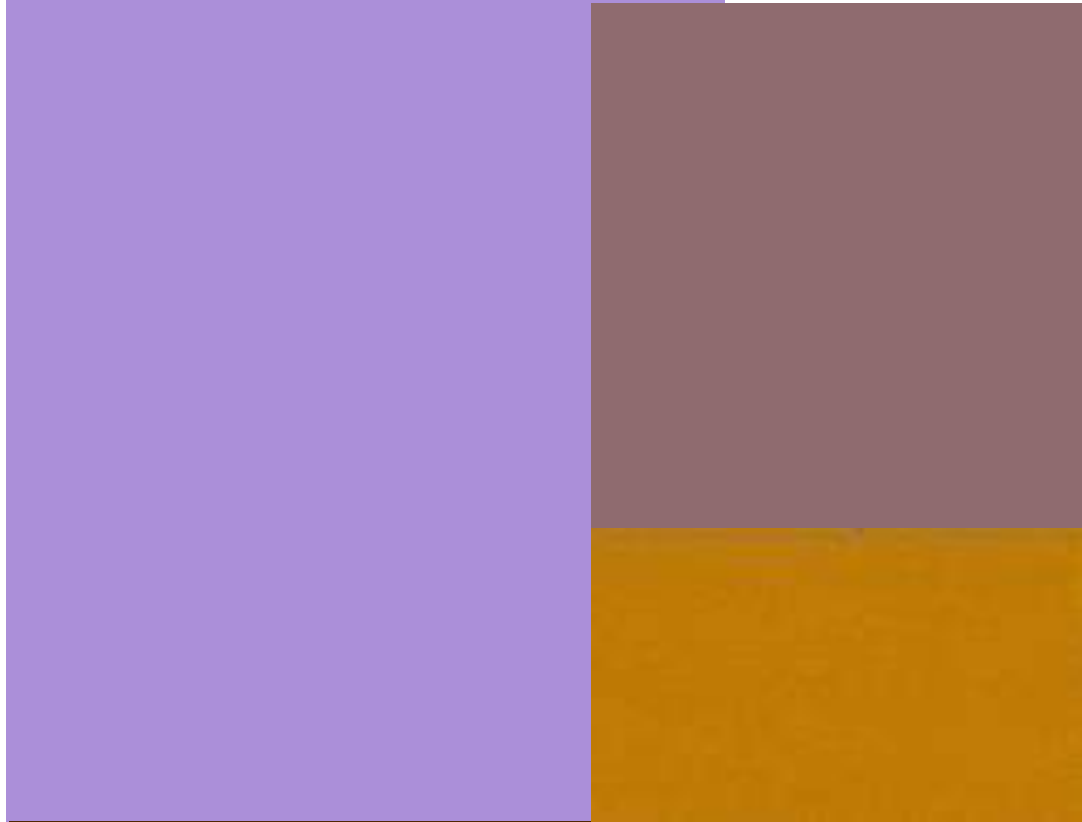


Furniture and Finishes



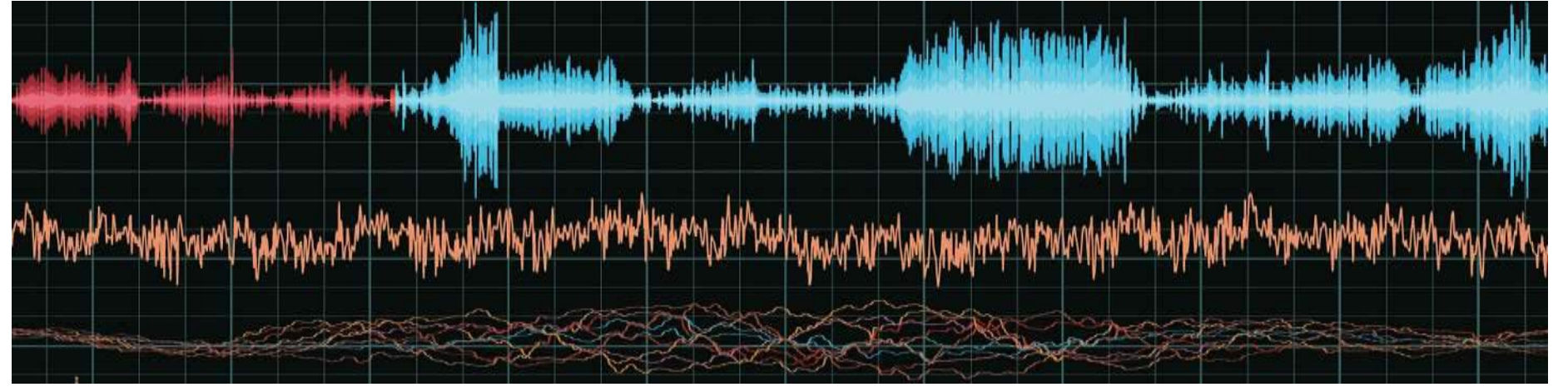


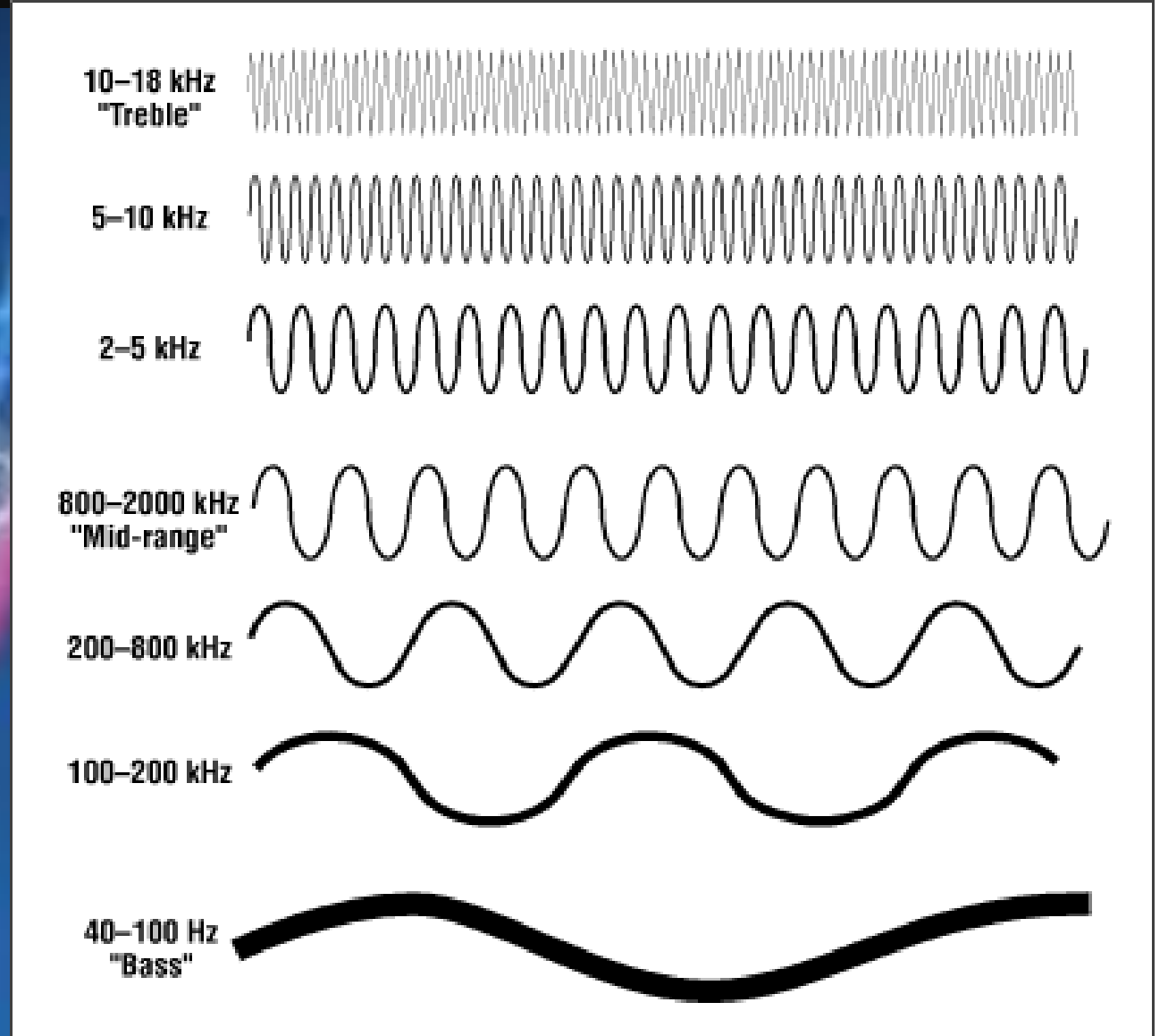
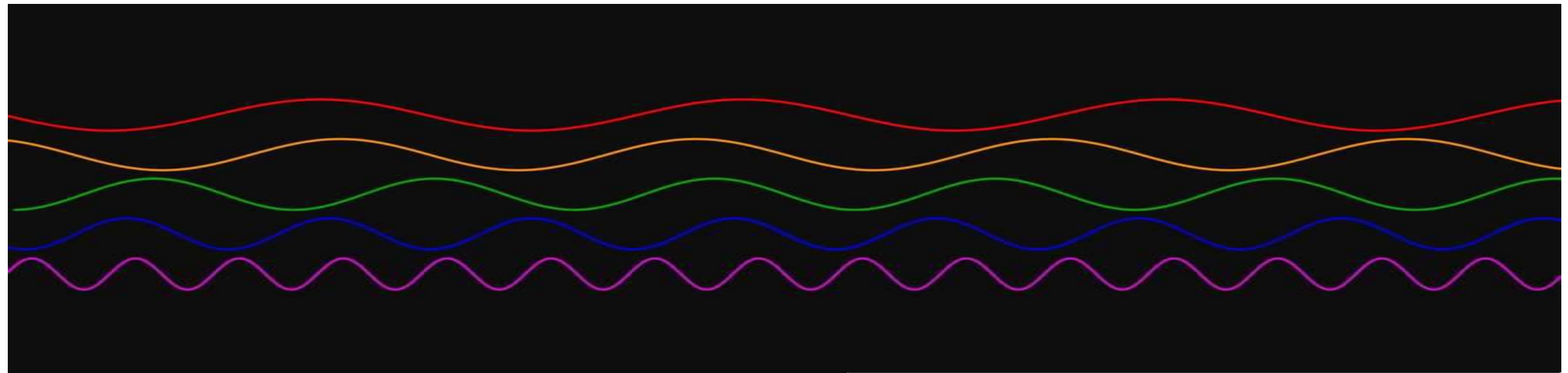
Furniture and Finishes



Concept

This space mimics the curvilinear shape of vibrations from speaking, which serves as inspiration for human connectivity within the study spaces and entertainment area. This design encourages locals and ECU students to use the space to connect with others.







Color Rationale

- Mustard yellow, burgundy, dark browns and purples are used throughout the space. The purple and yellow pay homage to East Carolina University.
- The brown and burgundy creates a comforting, warm environment by using warm hues on the color wheel.

