



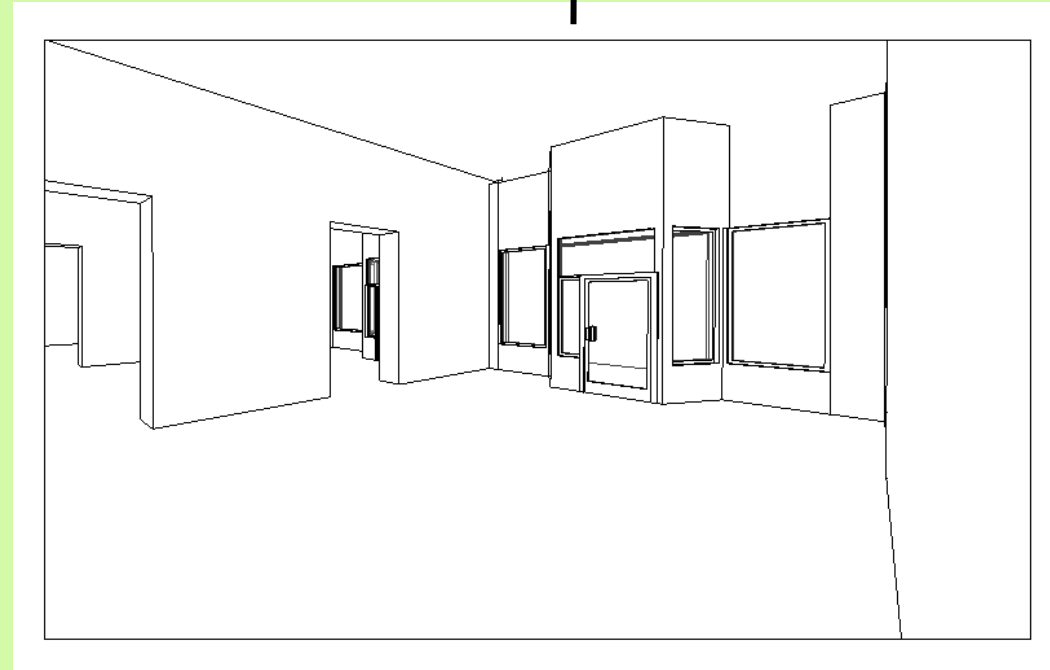
teknion

design challenge

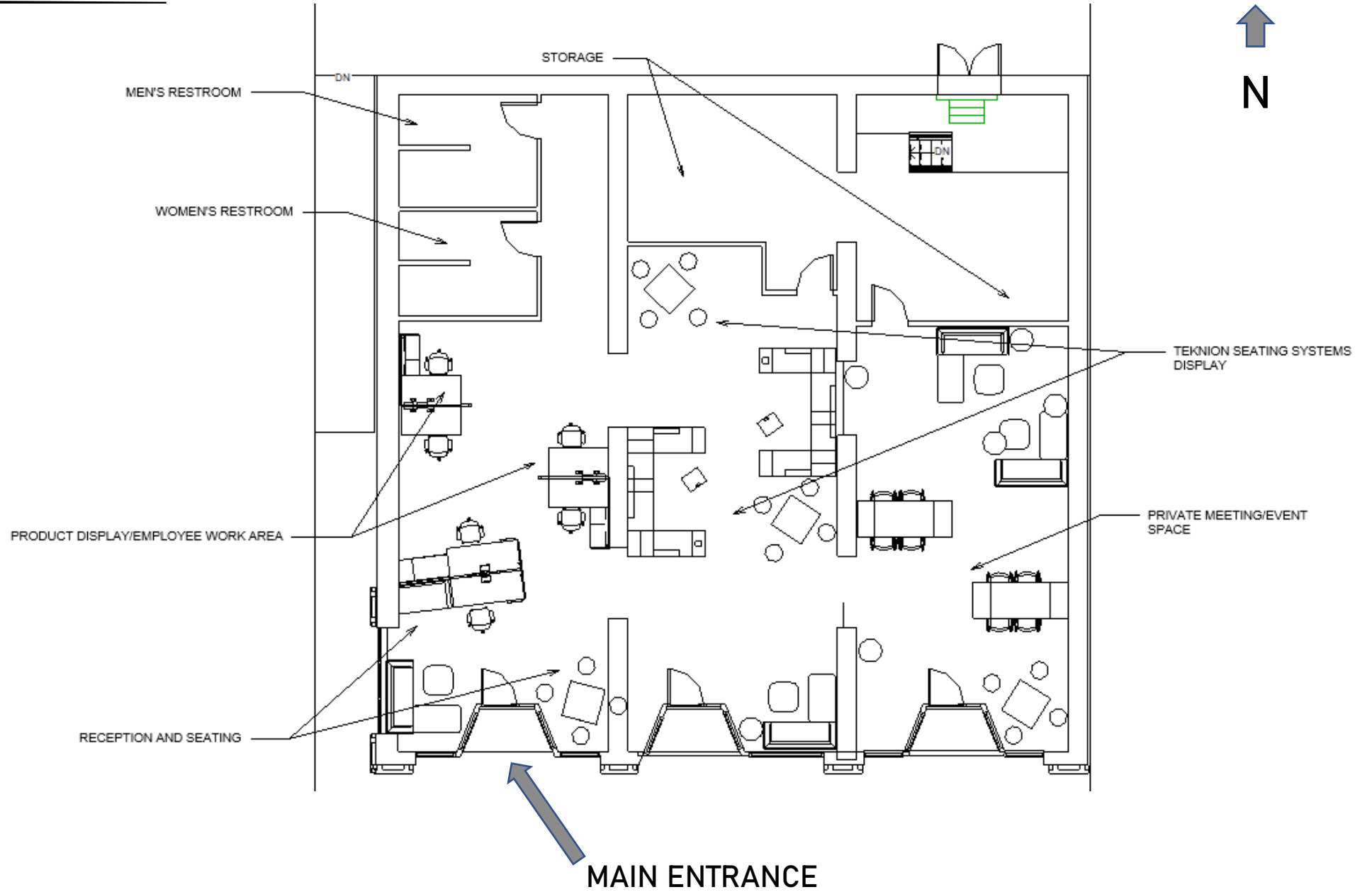
2020

Portfolio 3

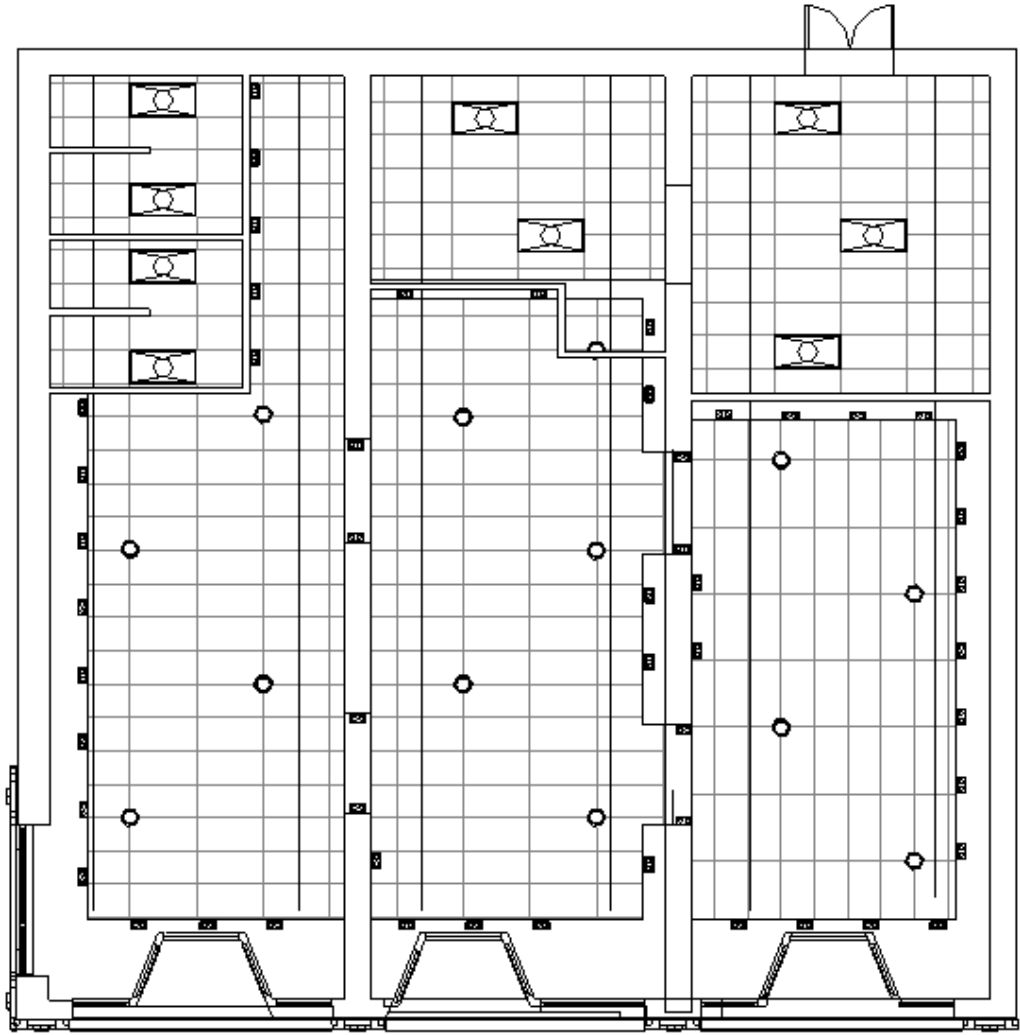
Julia Quayle IDSN 3102



FURNITURE PLAN



REVERSE CEILING PLAN



MAIN ENTRANCE



RENDERED PERSPECTIVE 1/3



RENDERED PERSPECTIVE 2/3



RENDERED PERSPECTIVE 3/3



CONCEPT

teknion's 2020 DESIGN CHALLENGE STATEMENT

2020 has challenged our community to change, sacrifice and adapt. We have all had to take a step back, examine the way we worked and the way humans interacted with each other. Through the lens of the pandemic, shifting culture and perspective, how must the office rise to the occasion that the future of work demands?



-Multifaceted showroom displaying variety of Teknion and Studio TK furniture systems

-Mutable space to accommodate clientele of any age, education or ability

-Visually appealing and inviting showroom to encourage Greenville/ECU population to explore the process of furnishing an office area

-Clients feel comfortable with their shopping experience while still taking necessary distancing precautions

COLOR RATIONALE



- Bright palette to liven the space
- Coordinates with finish options offered by Teknion and Studio TK
- Base colors can work well with multiple color schemes, meaning display options are not limited
- Appeals to target audience or ECU students



FURNITURE AND FINISHES

