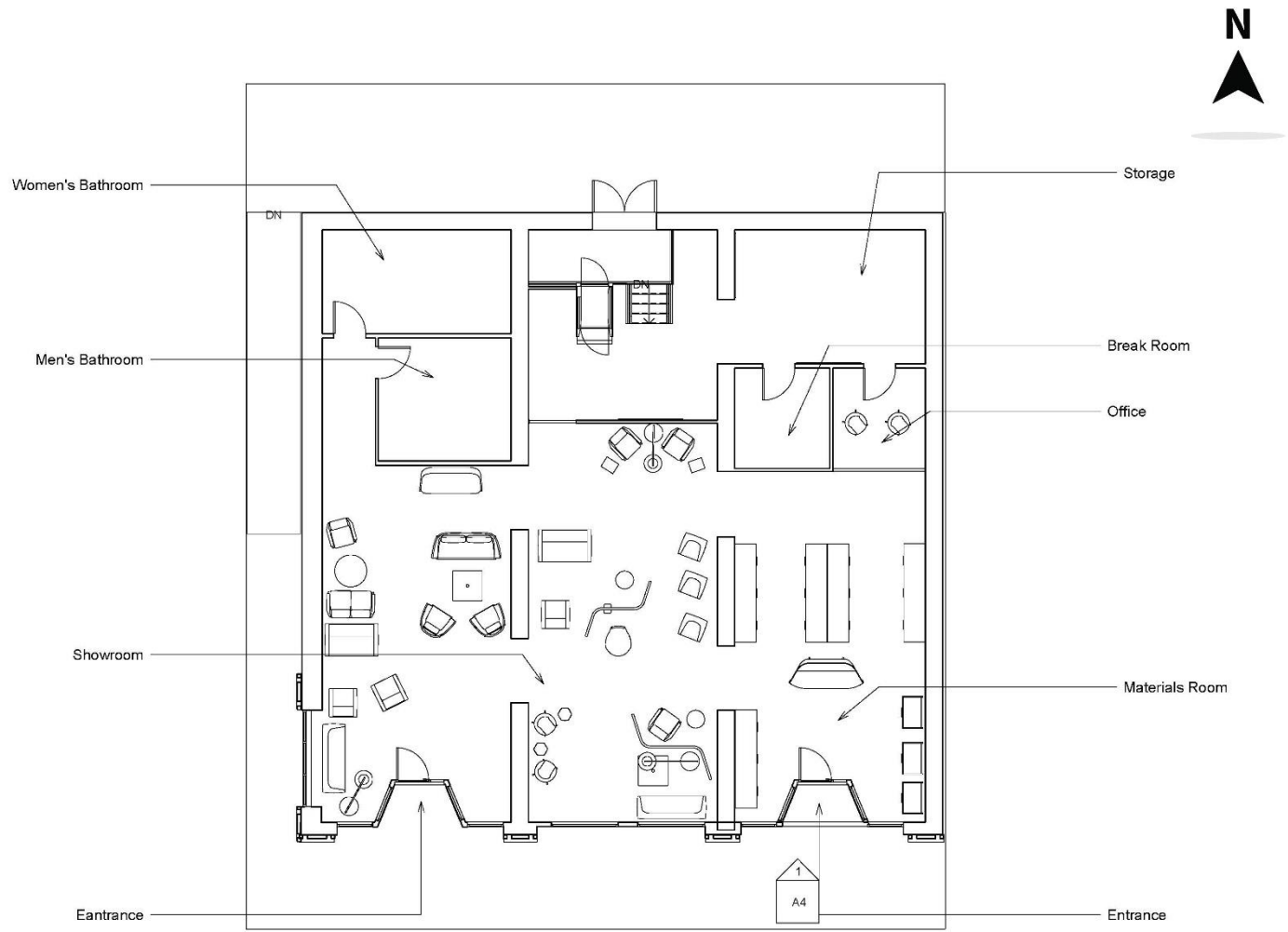
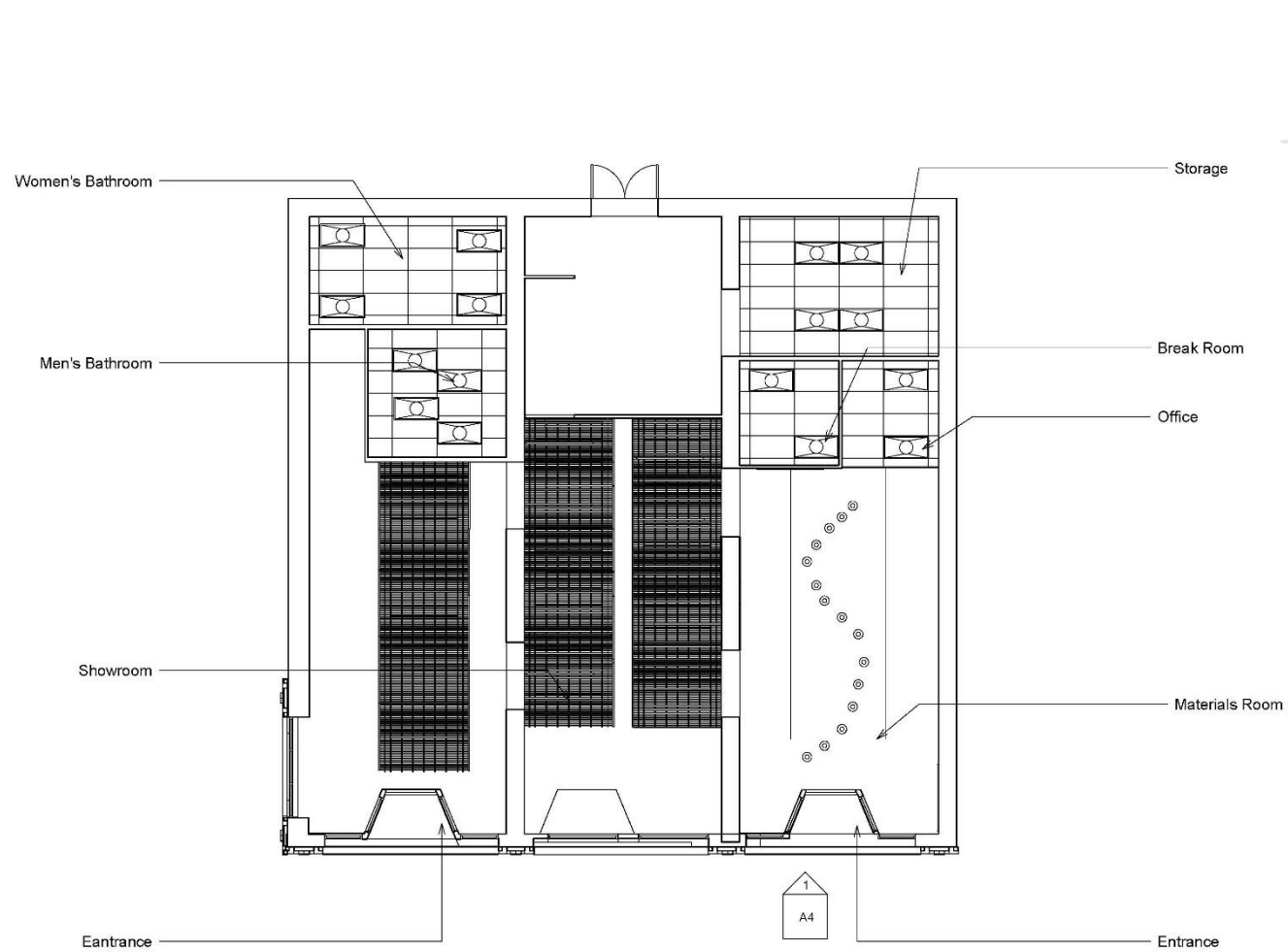


PORTFOLIO 3

ANDY VANG



FLOOR PLAN



REFLECTIVE CEILING PLAN

RENDERING PERSPECTIVE 1



RENDERING PERSPECTIVE 2



RENDERING PERSPECTIVE 3

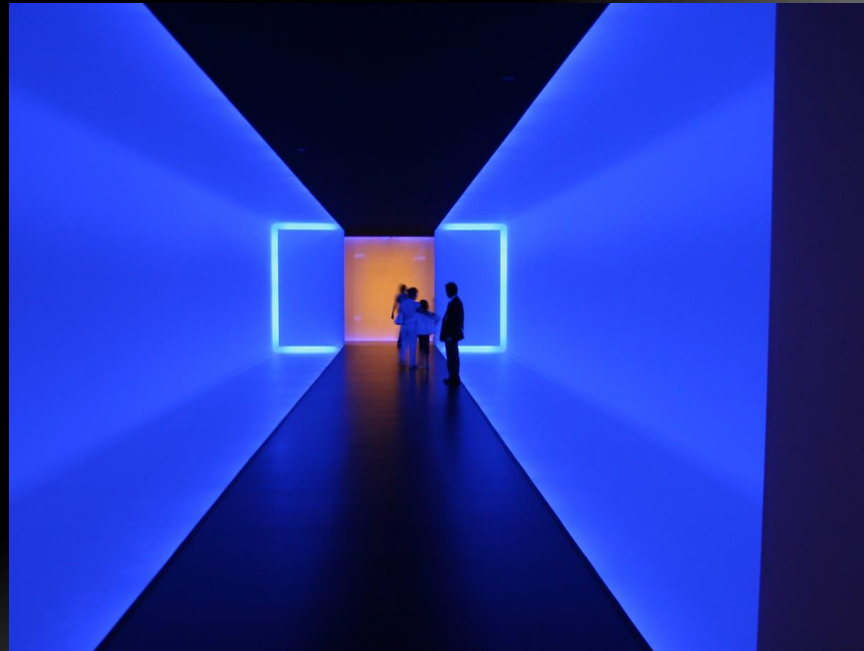




FURNITURE AND FINISHES

SUSTAINABILITY IN ILLUMINATION

THE CONCEPT OF THE PROJECT IS SUSTAINABILITY IN ILLUMINATION. USING LIGHTS TO VISUALLY ATTRACT THE EYES WAS THE MAIN GOAL OF THE PROJECT. THE FURNITURE IN THE MODEL IS COLOR SPECIFIC FOR EACH PORTION OF THE BUILDING TO COMPLIMENT THE LIGHT THAT IS BEING EMITTED. BY USING LIGHTS, YOU USE LESS PRODUCTS FOR WALLS, FLOORING, AND FINISHES BECAUSE THE LIGHTS MAKE THE SPACES COME TO LIFE



COLOR RATIONALE

THE COLOR RATIONALE OF THE SPACE WAS DETERMINED BY THE LIGHTS THAT WERE BEING USED. IN THE FIRST SECTION, GRAY AND BLACK FURNITURE WERE PLACED TO CONTRAST AGAINST THE WHITE LIGHT. IN THE MIDDLE PORTION, WHITE FURNITURE WAS PLACED TO LET THE LIGHTS TAKE CONTROL OF THE COLORS AND MAKE THE FURNITURE POP.