

# Portfolio 1

IDSN 3102

Fall Semester

Amanda Comley

# Background Information

## Stakeholder Profiles

- A real estate owner is creating a working showroom for Herman Miller Furniture.
- The goal of the space is to show clients potential workspace design, as well as help provide hybrid workspace solutions during the pandemic.
- The space will showcase different products from Herman Miller Furniture and will give clients the opportunity to test out the products before purchasing.



# Background Information

## Site Profile

- Northeastern corner of the intersection of E. 5<sup>th</sup> St. and Cotanche St. in downtown Greenville, NC
- Brick construction
- 2,950 Square Feet



*Front 5<sup>th</sup> St. View, 201-205 E. 5th St. Greenville, NC*



*5<sup>th</sup> St. View, 201-205 E. 5th St. Greenville, NC*



*5<sup>th</sup> St. View, 201-205 E. 5th St. Greenville, NC*



*Cotanche St. View, 201-205 E. 5th St. Greenville, NC*



*Cotanche St. View, 201-205 E. 5th St. Greenville, NC*

# Background Information

## Site Analysis

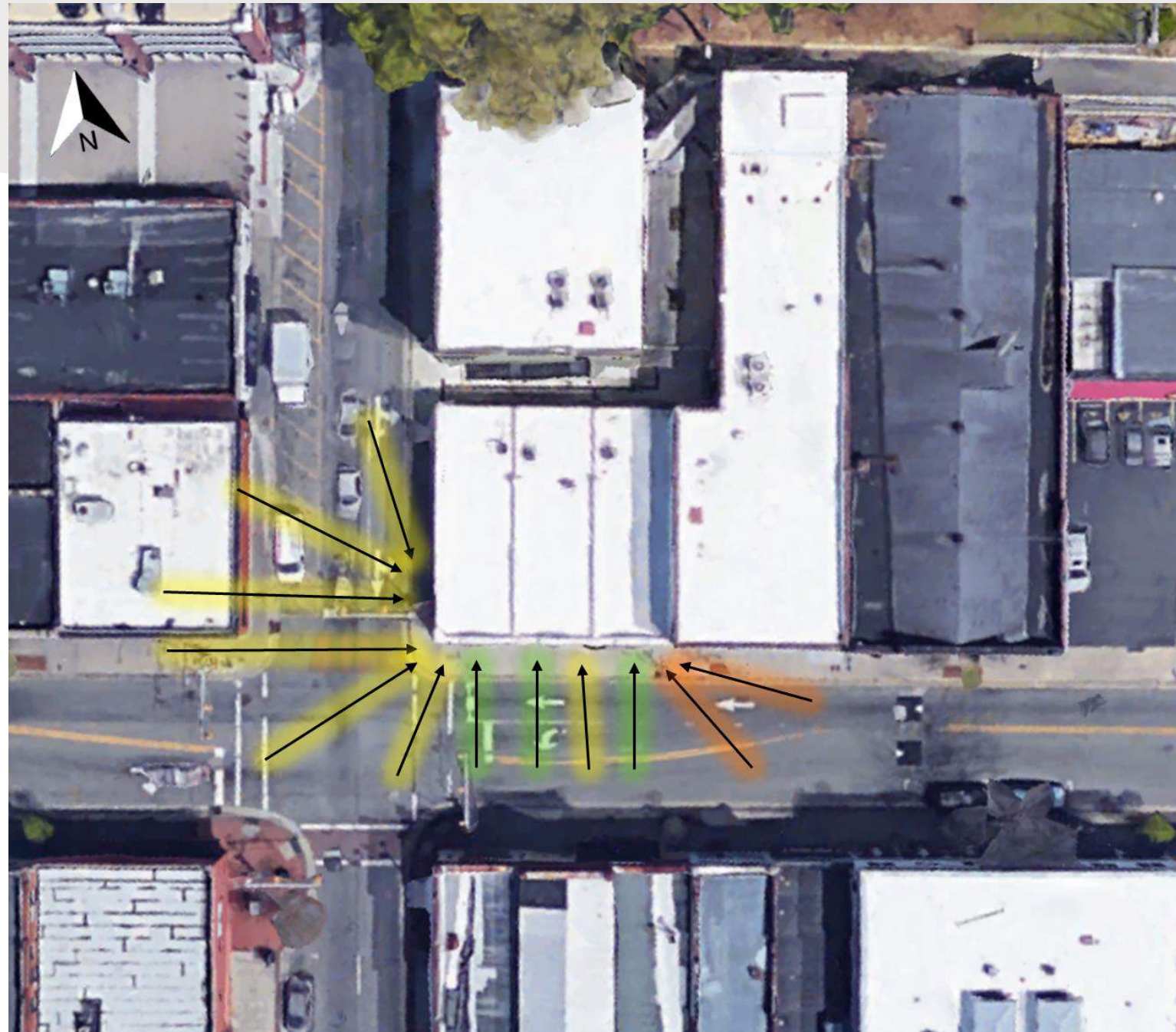
- Entrance



- Morning Light



- Day/Evening Light



# Background Information

## Design Problem Statement

The problems with the space are:

- We must create a connection between the units for the space to flow and function correctly.
- With the 2,950 square feet of usage, we will have to make a strategically spaced-out plan to make sure everything is ADA accessible and there is at least a 36-inch passageway throughout the show room.
- The doorways must also be 36 inches wide.
- There will not be enough natural light coming into the space so we will need to add adequate lighting inside.



# Research



## Designing with Universal Design Principles/Designing for Accessibility

- Universal Design: the design and composition of an environment so that it can be accessed, understood, and used to the greatest extent possible by all people regardless of their age, size, ability, or disability.
- Inclusive Design: design that considers the full range of human diversity with respect to ability, language, culture, gender, age, and other forms of human difference.
- The RL Mace Universal Design Institute's work manifests the belief that all environments and products, to the greatest extent possible, should and can be usable by everyone regardless of age, ability, or circumstance. The Institute advances the concept of universal design in all design disciplines, including those that work on housing, public-use buildings, outdoor, and urban environments, and related products. Their Services Include:

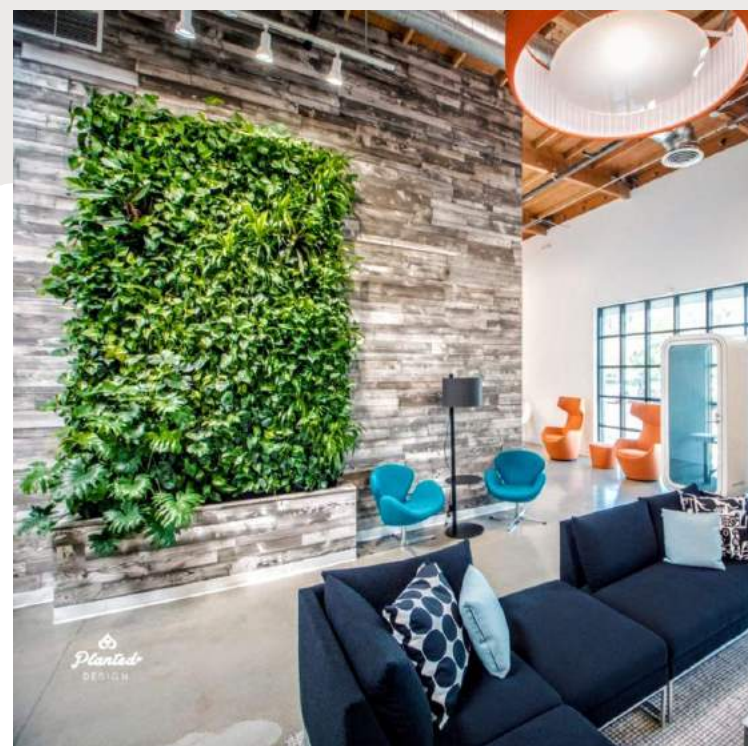
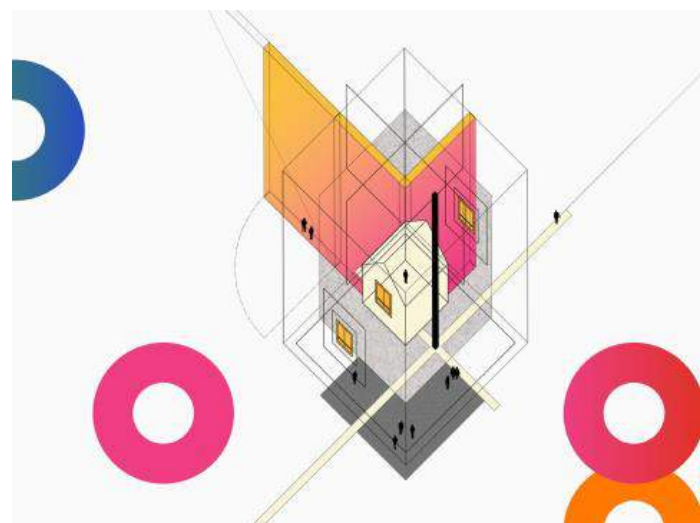
PLAN REVIEW	CONSULTING	COLLABORATION	EDUCATION
We provide design assistance, design research, and design development of your plans to align with universal or accessible design	Helping you understand and work with ADA and Fair Housing compliance analysis in your projects	Working with builders and manufacturers to include universal design and accessible design in their projects	Creation and distribution of educational publications, instructional materials, presentations, courses, and modules to increase knowledge of the applications of accessible and universal design

- ADA passageways and doors: For a door and/or passageway to be ADA accessible, it should be at least 36 inches wide
- ADA restrooms: The floor space in a restroom should be at least 30 inches by 48 inches. There needs to be just enough clearance for the knees and toes of a person in a wheelchair to reach the sink and move around freely.
- ADA heights and projection into the space: Countertops must be no more than 36 inches from the floor, but certain counters may be 38 inches, while others could also be 34 inches for easier wheelchair access. ADA also requires minimum unobstructed areas in front of different counter types.

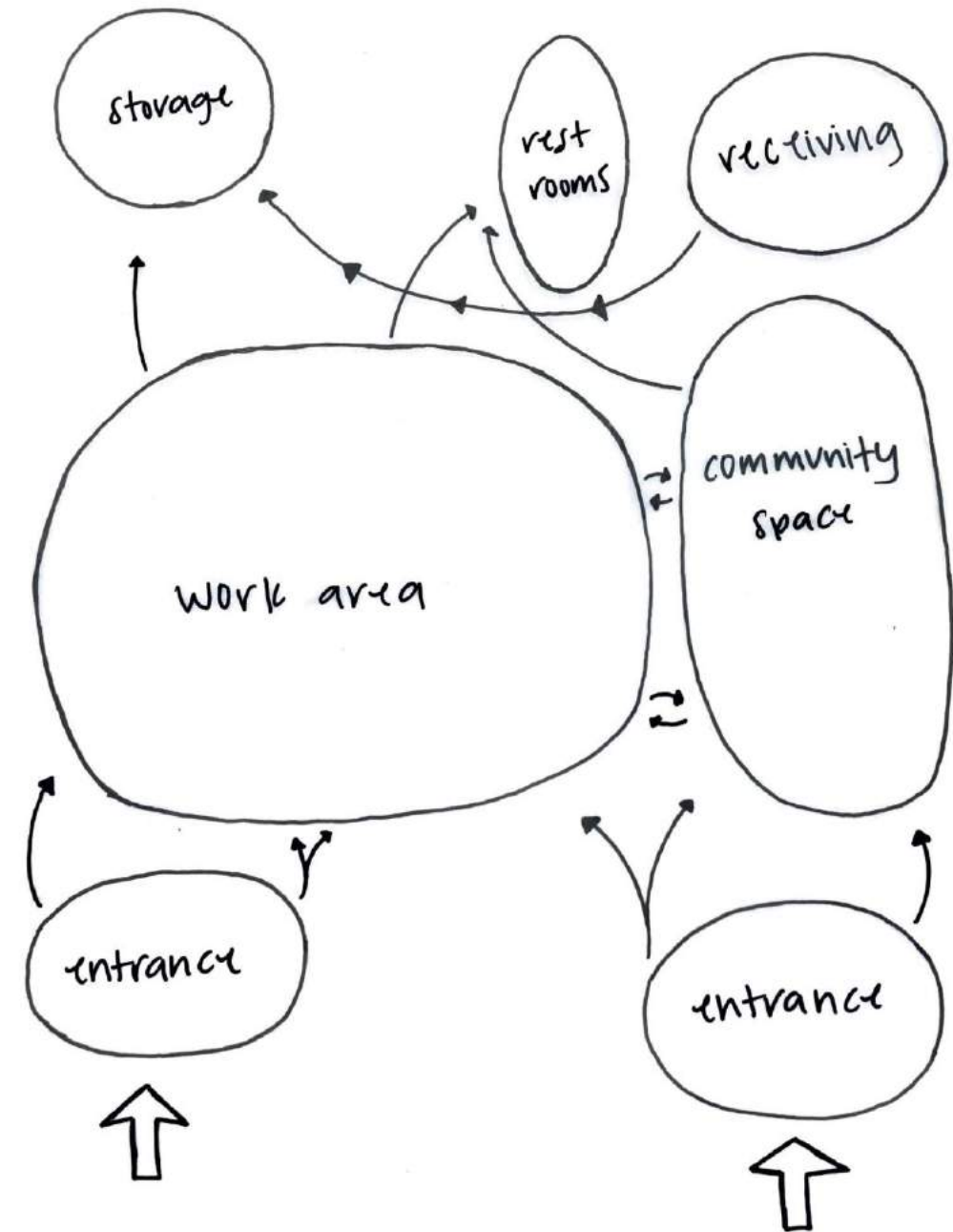
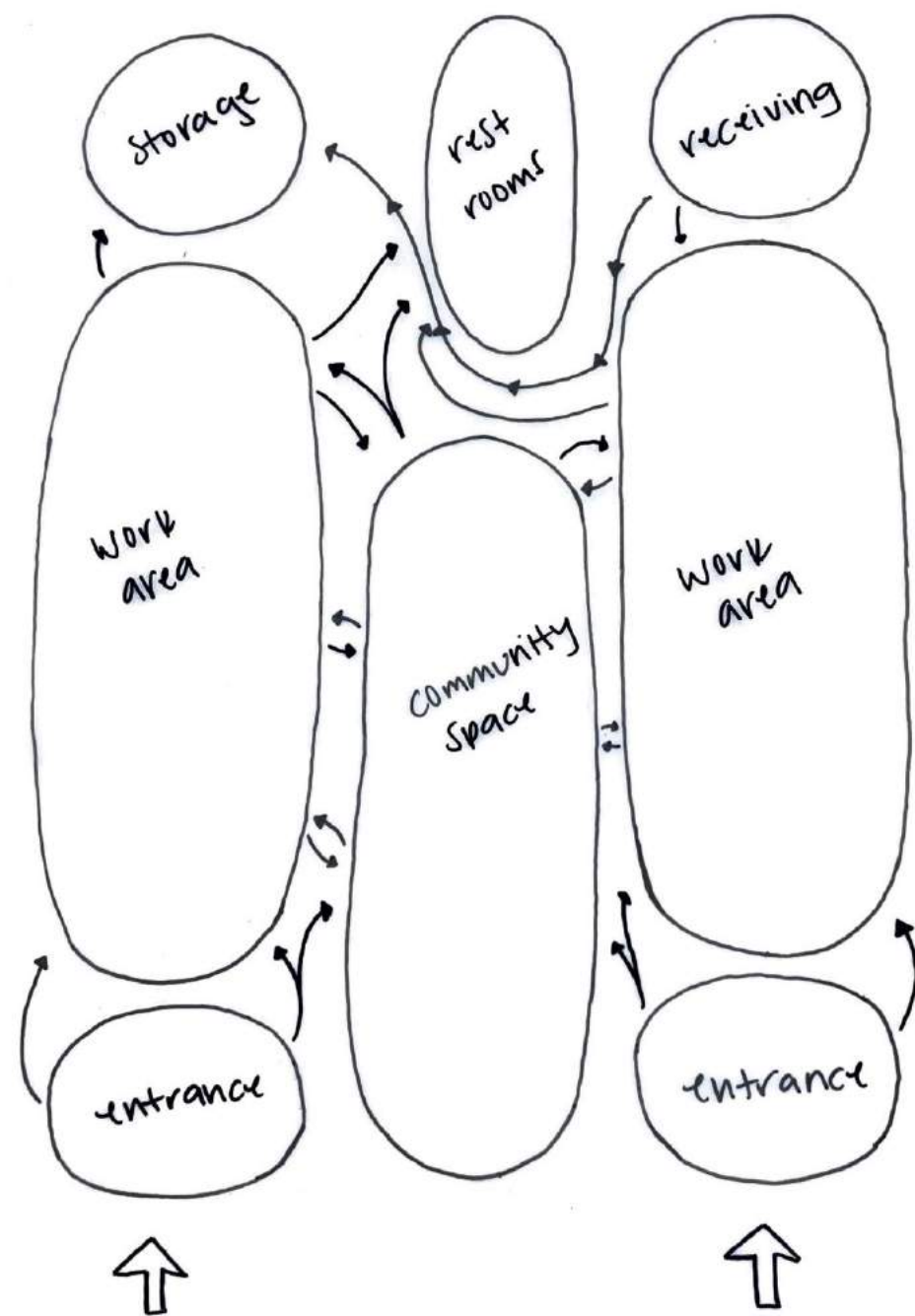
# Concept Statement

## The Future of Work

Focusing on Herman Millers values we want to showcase hybrid workplace solutions while using trending designs and colors from their homepage campaign.

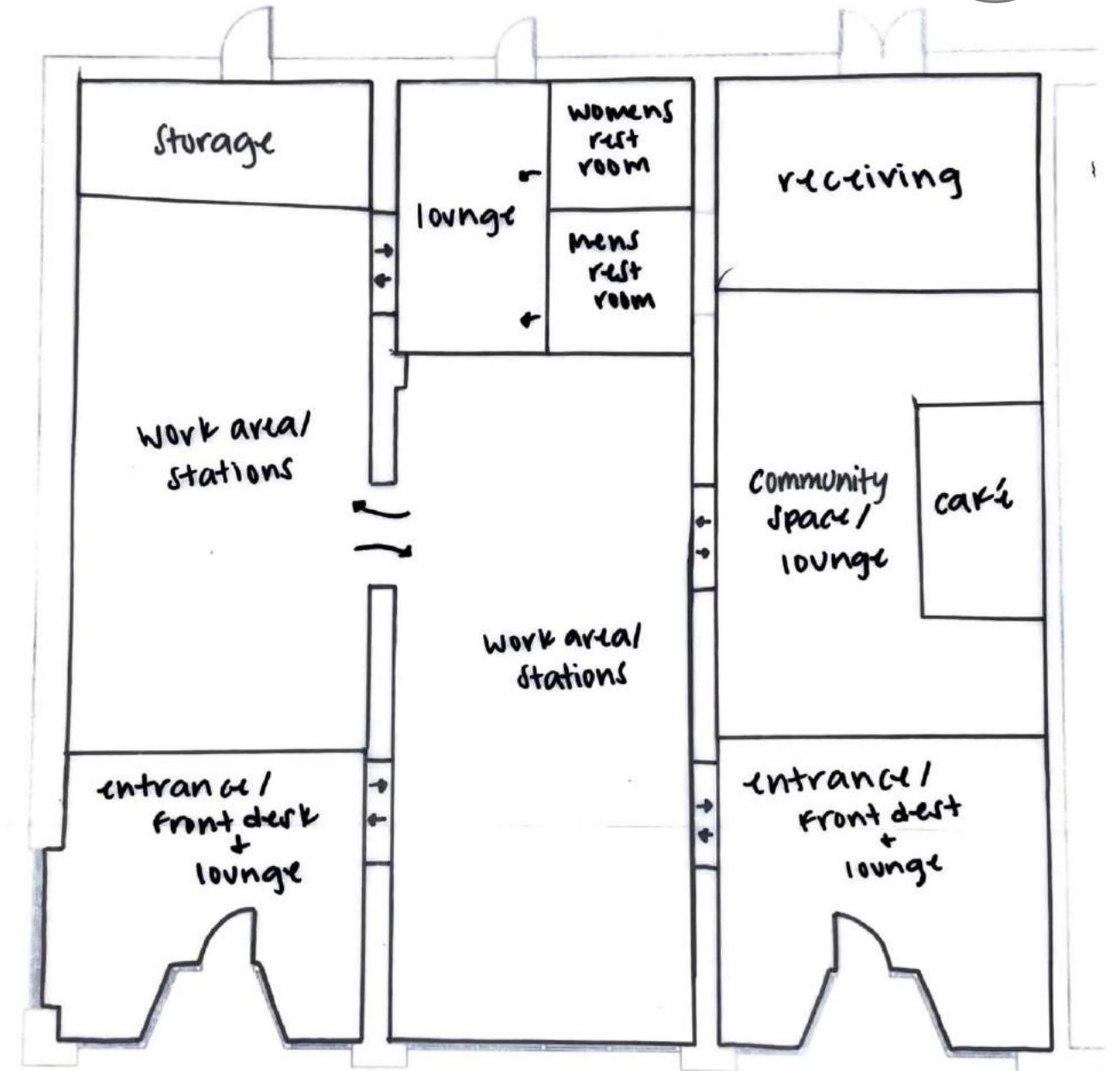
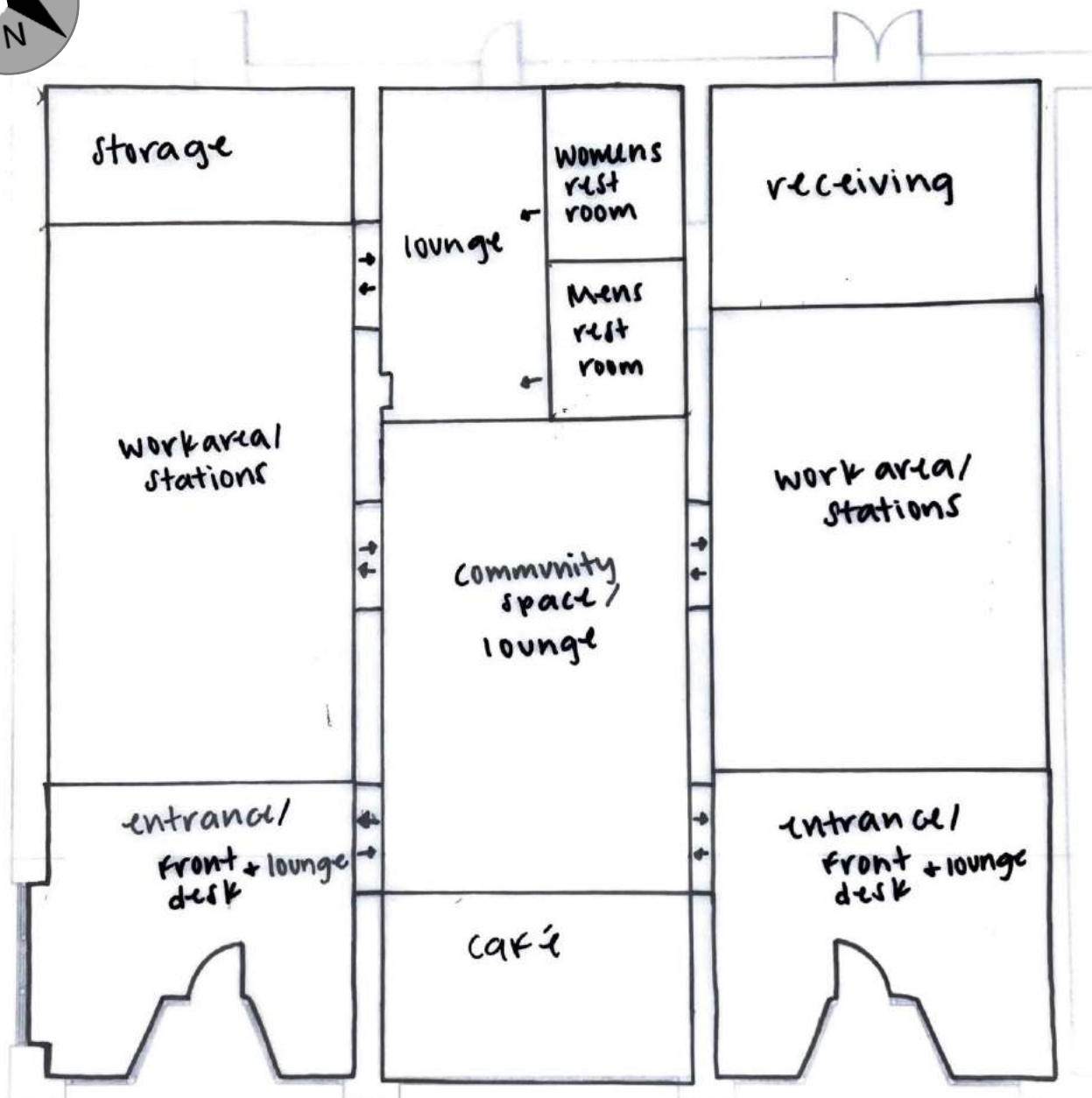


# Bubble Diagrams



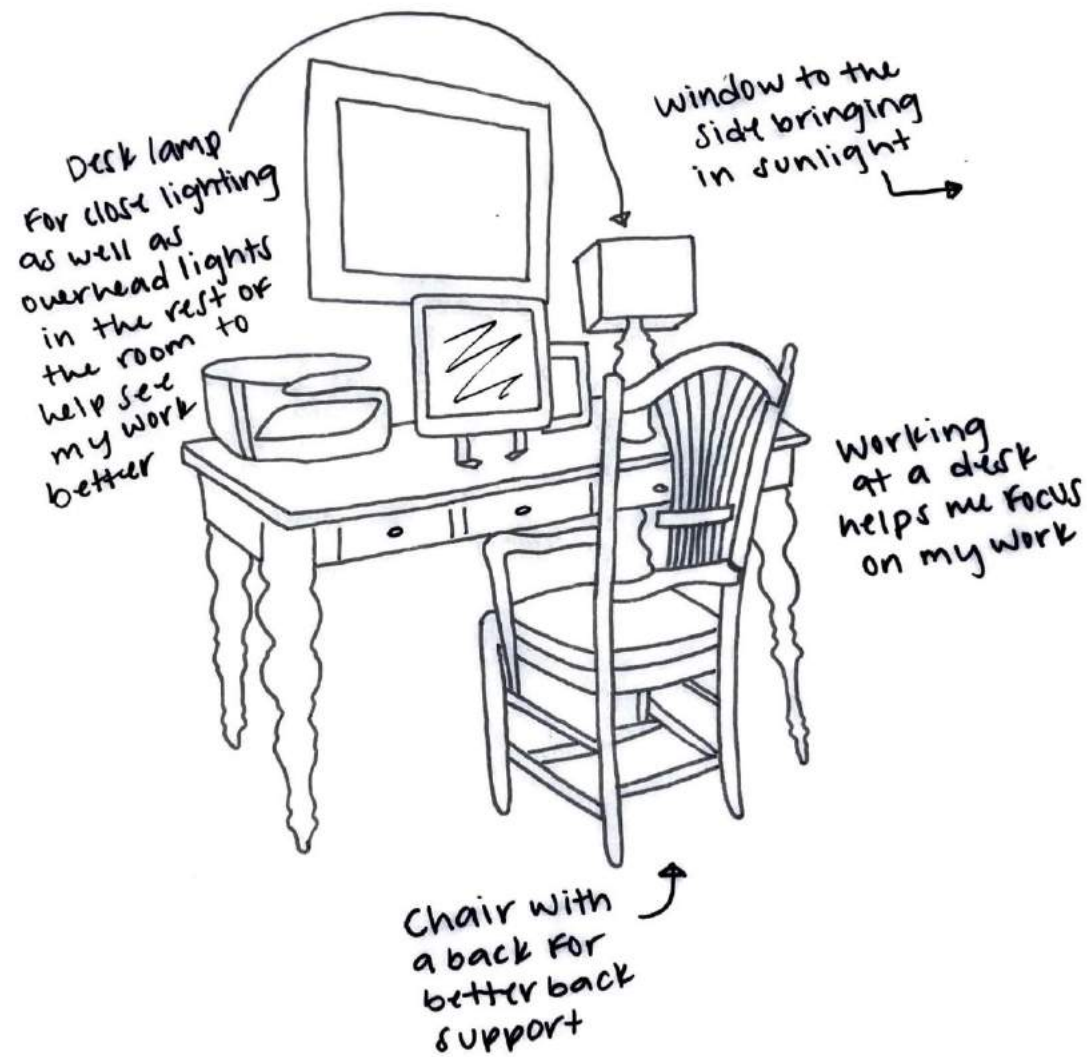
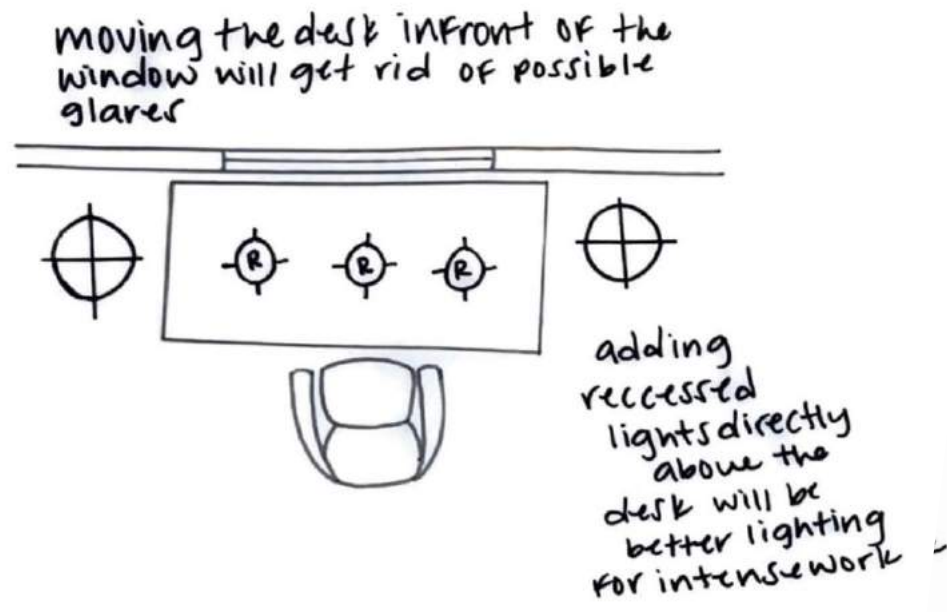


# Blocking Diagrams



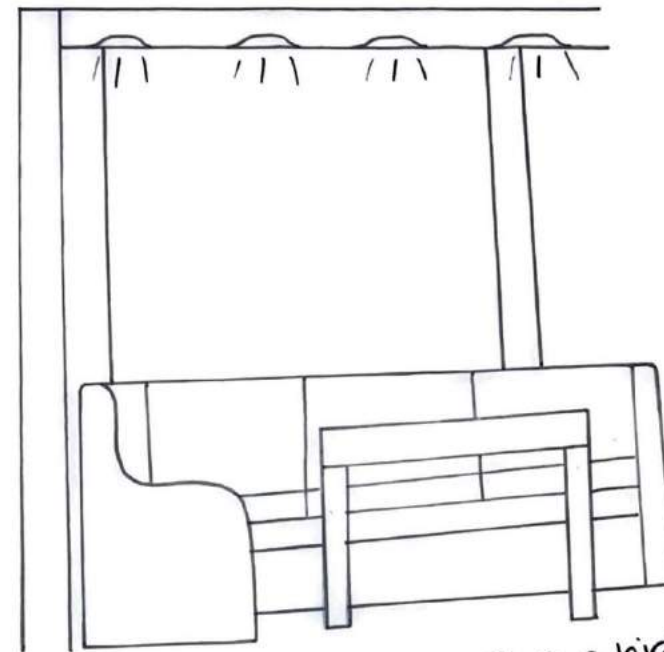
# Existing/Ideal Activity Spaces

Intense Focus Work

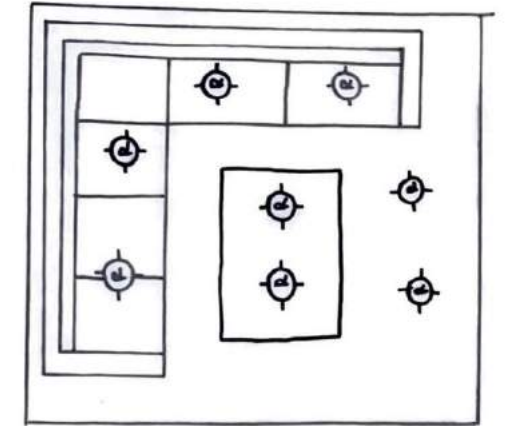


# Existing/Ideal Activity Spaces

Diffuse Focus Work

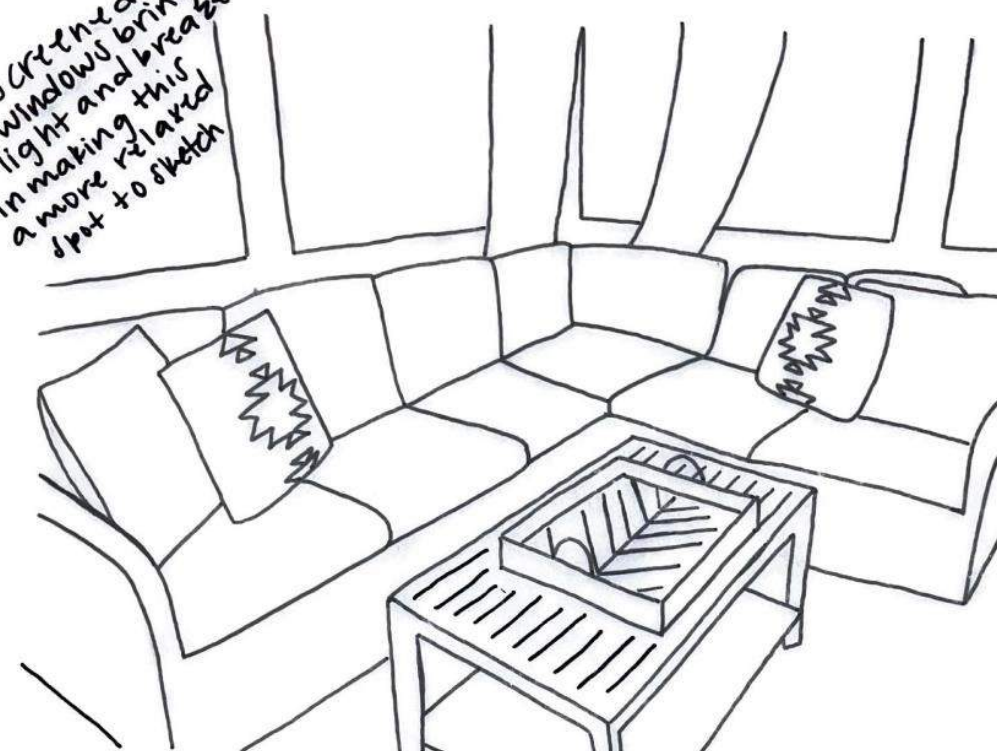


using a higher table on the deck will make it easier to sketch or do other small assignments

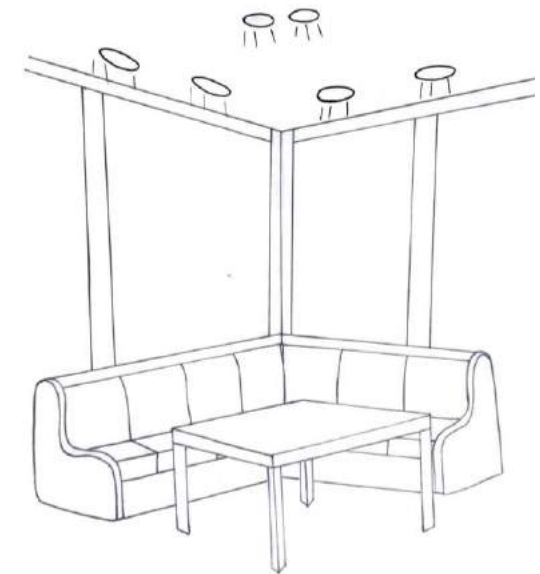


adding recessed lighting to the space will make it easier to do work on the deck at night

Screened windows bring light and breeze in making this a more relaxed spot to sketch

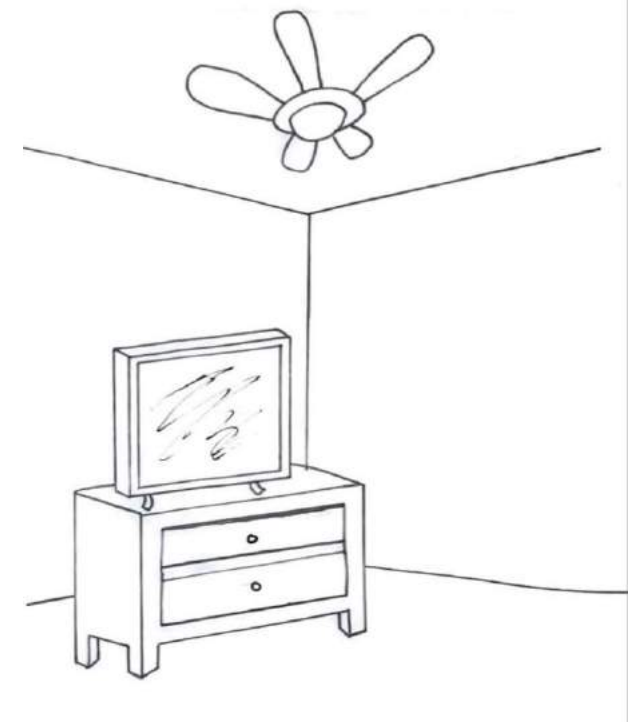
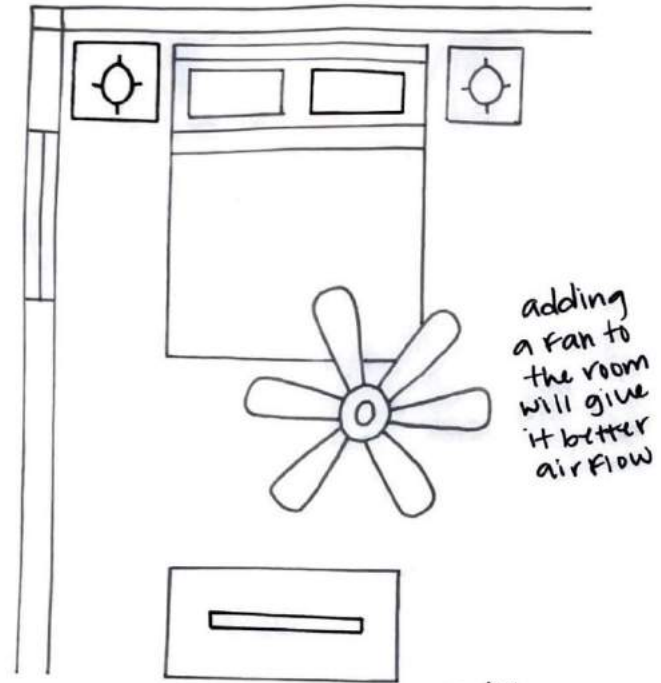


Comfortable sofa with back support makes this a good spot for less intense work



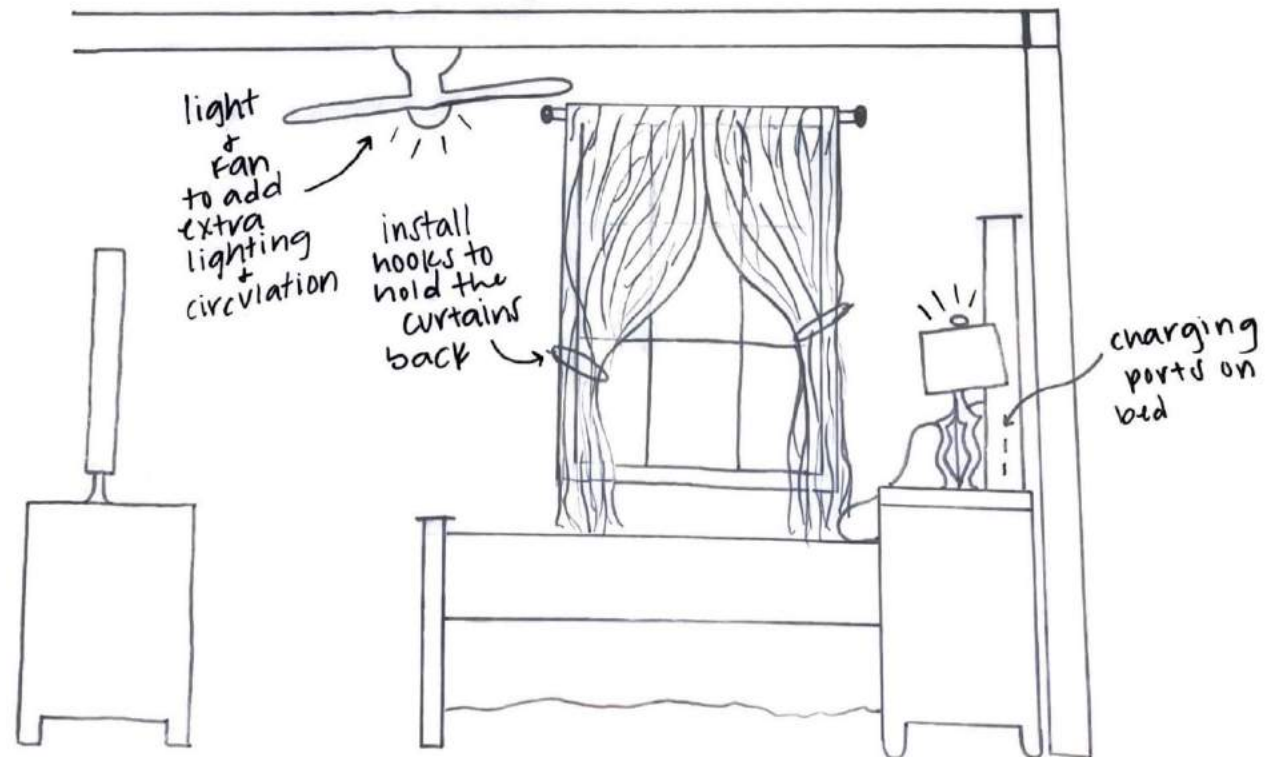
# Existing/Ideal Activity Spaces

## Daydreaming- Not Working



charging ports on the side of the bed frame make it easy to charge my phone while I'm laying down

adding a tv for extra entertainment while you take a break from work



# References

<http://universaldesign.ie/What-is-Universal-Design/>

<https://legacy.idrc.ocadu.ca/about-the-idrc/49-resources/online-resources/articles-and-papers/443-whatisinclusivedesign>

<https://www.udinstitute.org/services>

<https://rightsizefacility.com/generational-differences-work-space-preference/>

<https://www.hg.org/legal-articles/employee-social-behavior-the-new-business-environment-46725>

<https://www.hr.admin.cam.ac.uk/policies-procedures/dignity-work-policy/guidance-managers-and-staff/guidance-managers/acceptable-and>

<https://uptowngreenville.com/about/history-of-greenville/>

<https://www.greenvillenc.gov/government/fire-rescue/fire-inspections-cause-investigations-and-permits>

<https://www.forbes.com/sites/timothyjmclimon/2018/09/18/the-future-of-the-historic-preservation-movement-connecting-people-with-places/?sh=2a2cdeb84117>

<https://www.bigrentz.com/blog/healthy-buildings>