

5TH & COTANCHE-

# REVITALIZATION

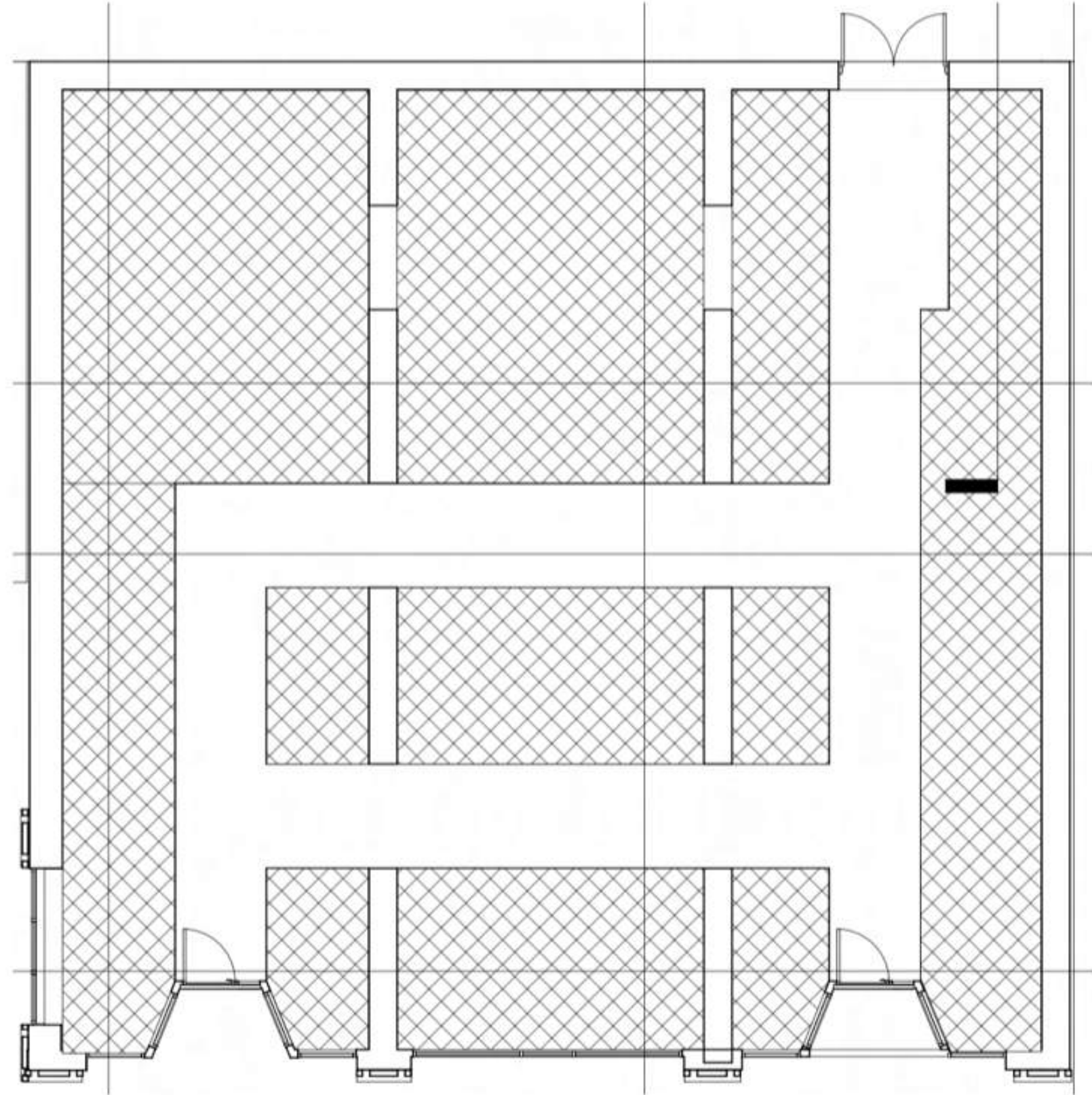
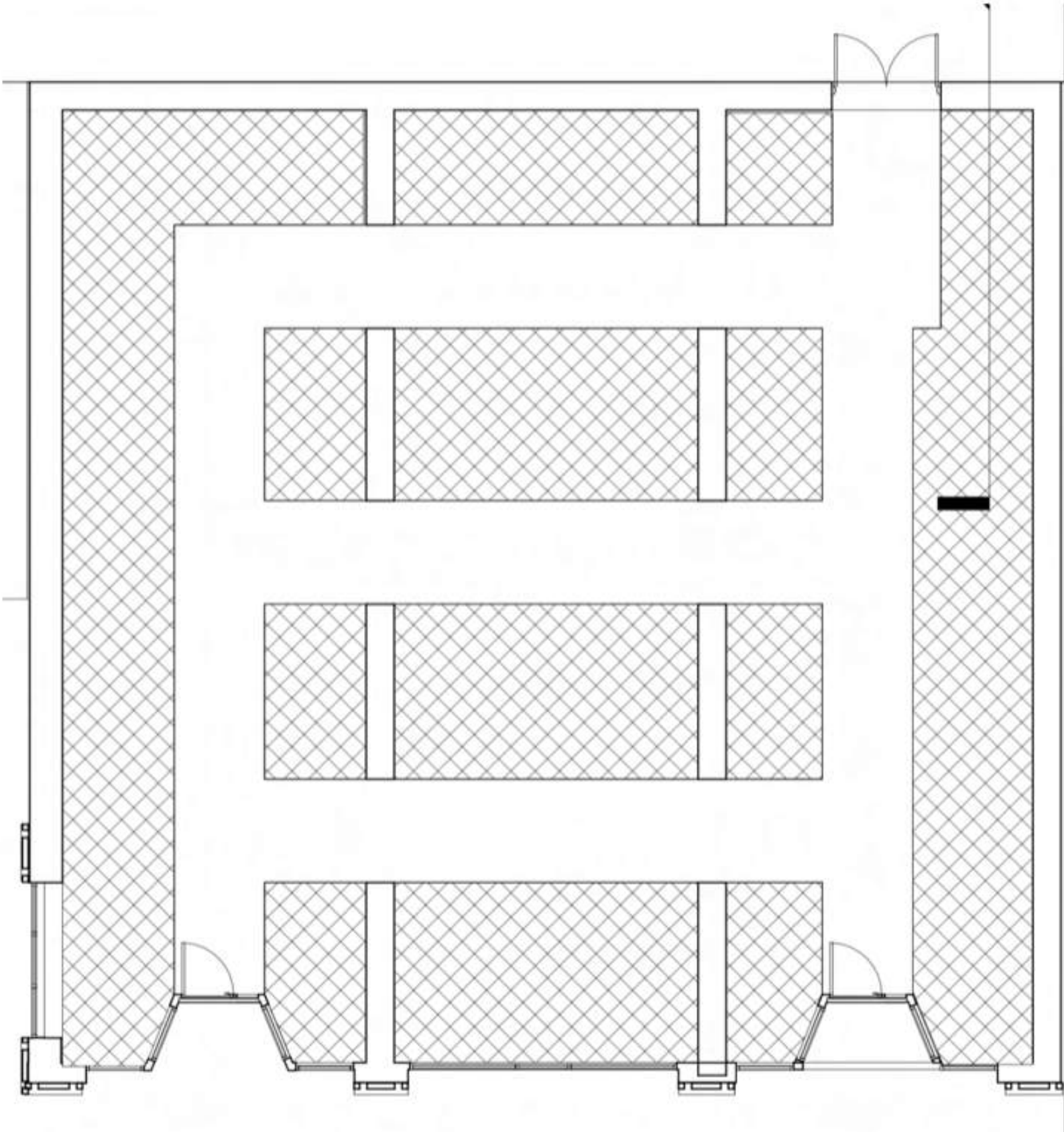
## PORTFOLIO 2

AMINA GUYON

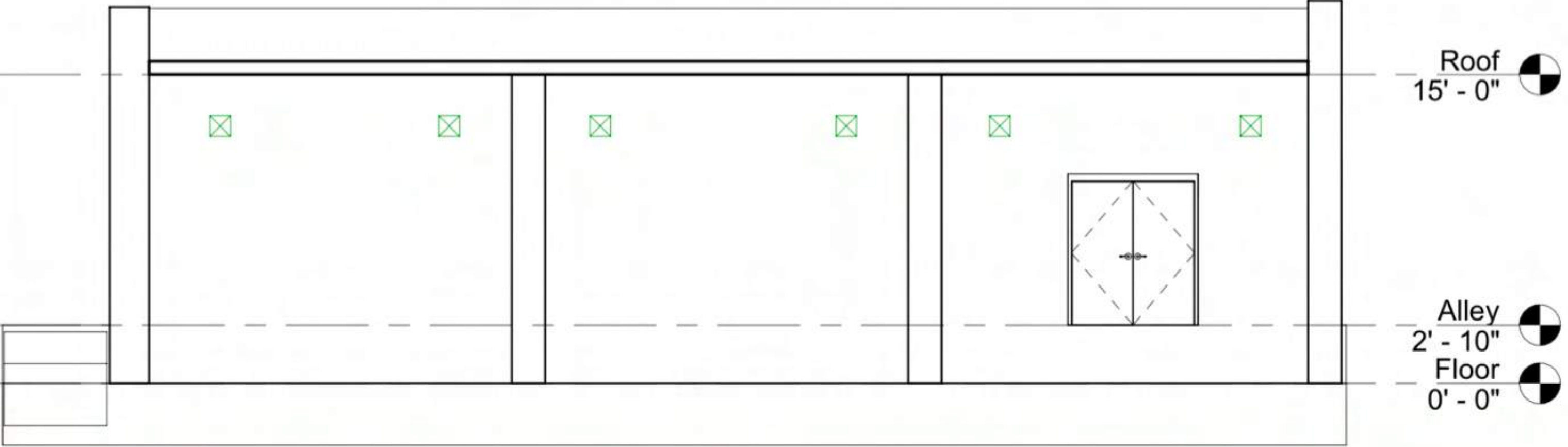
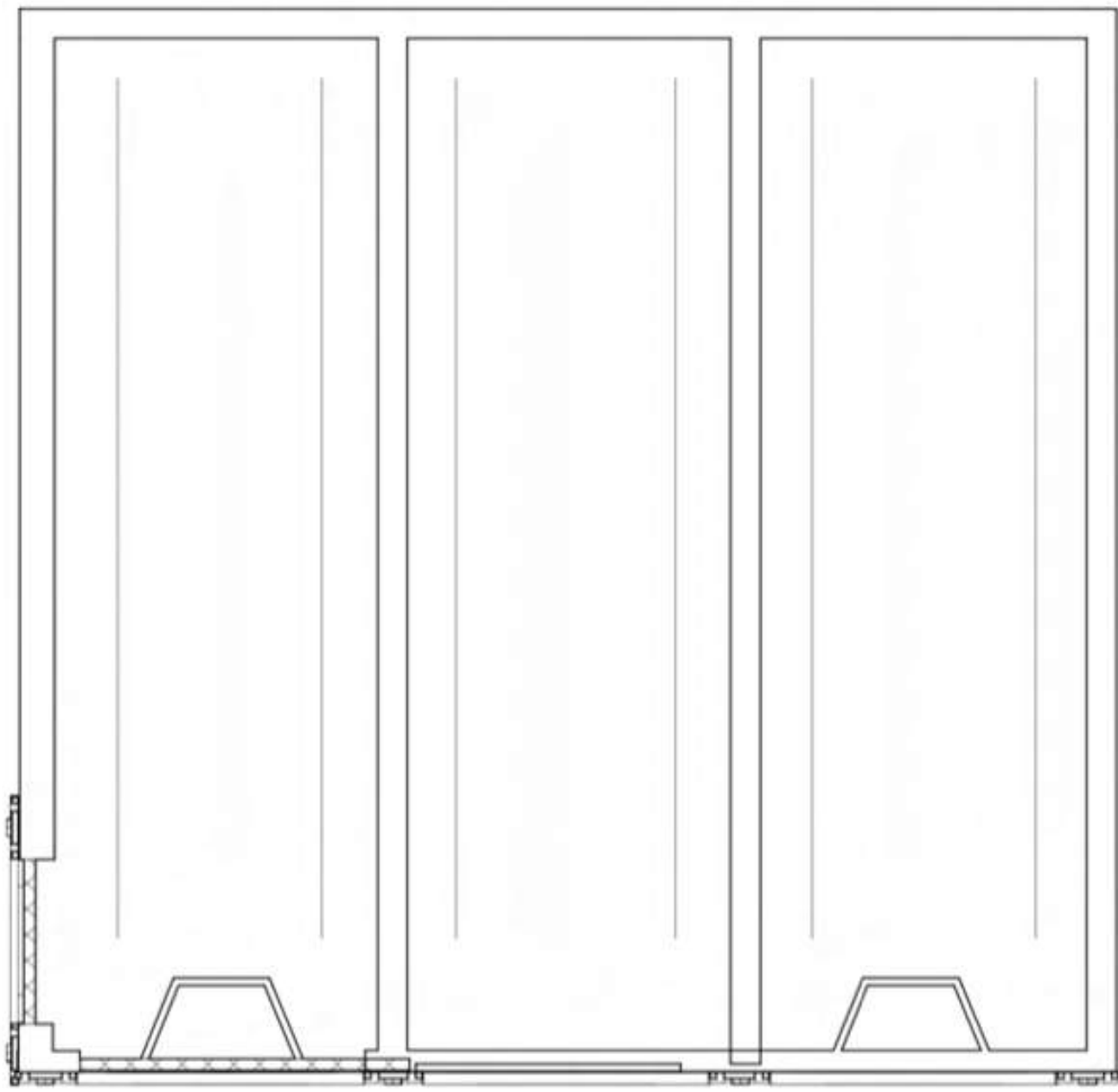
FALL 2021

IDSN STUDIO III

# PATHS 1&2



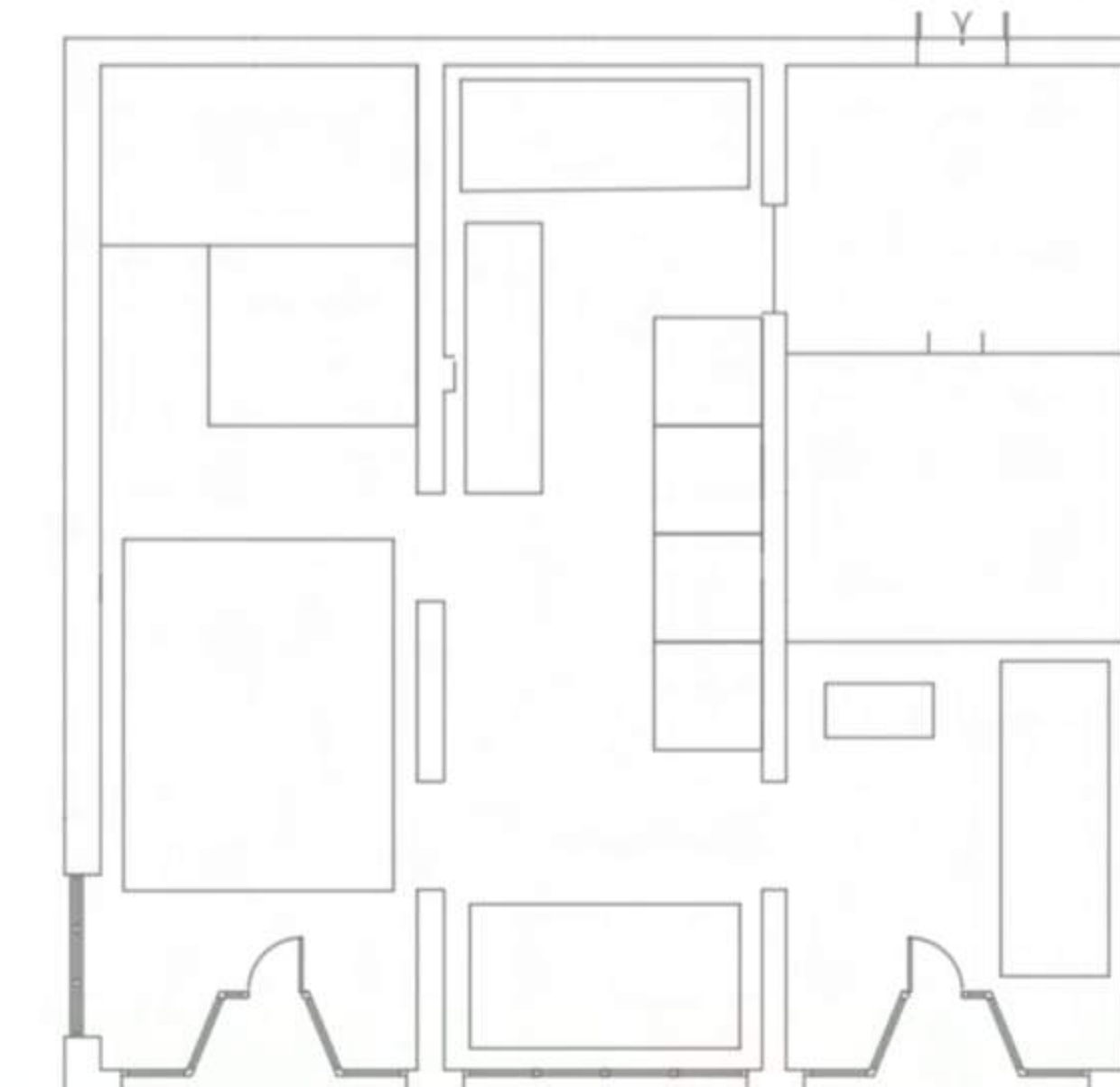
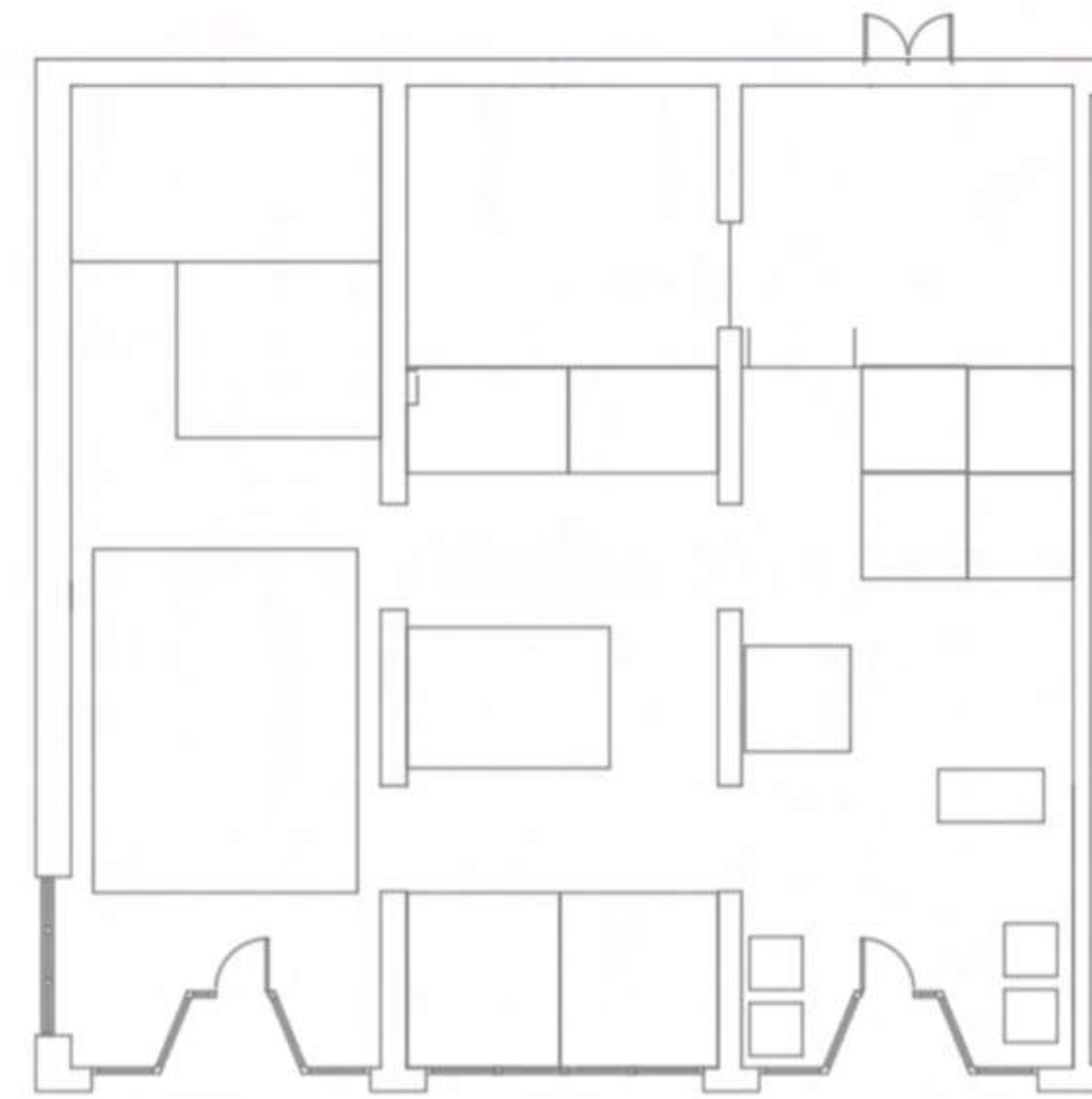
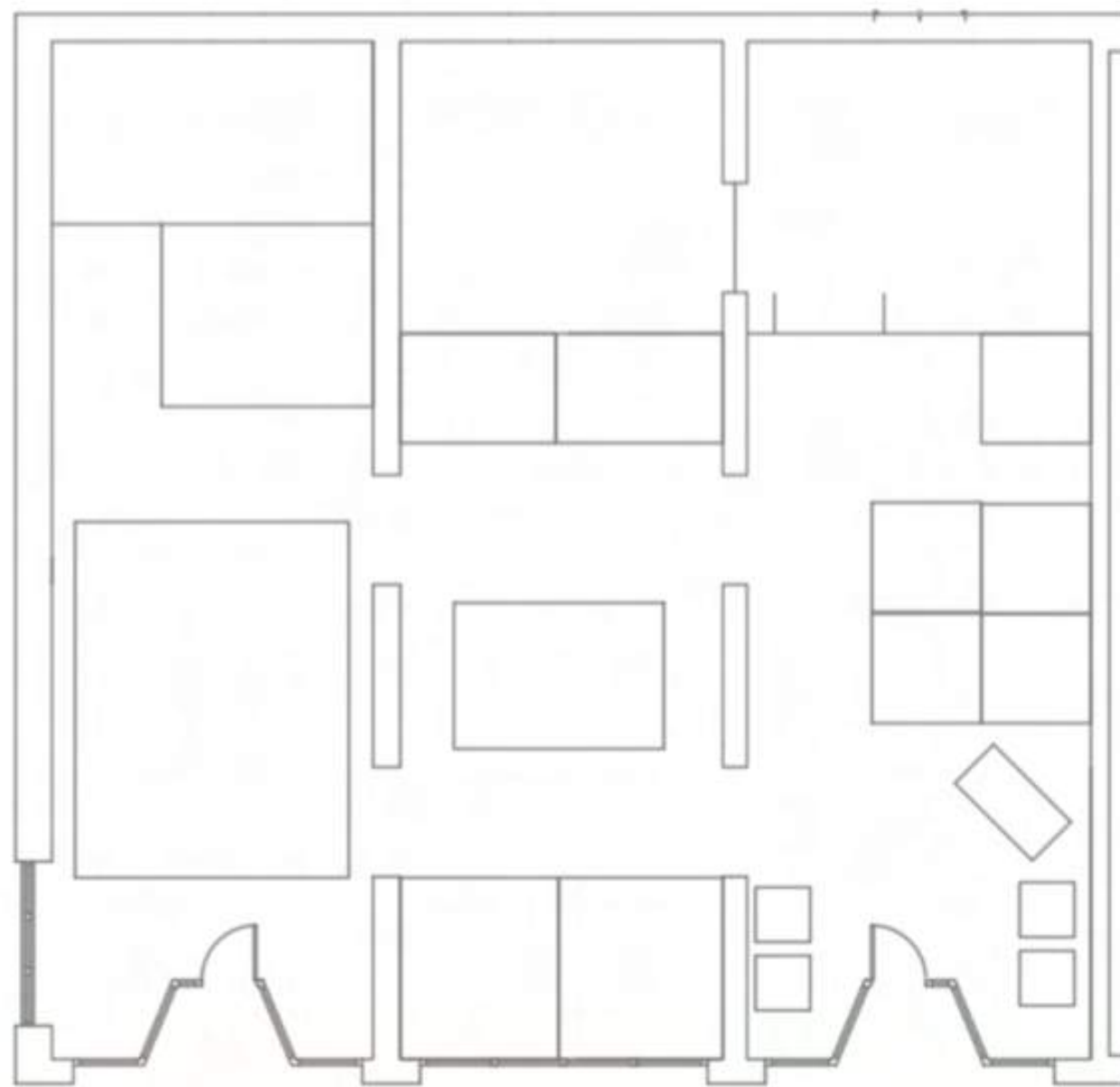
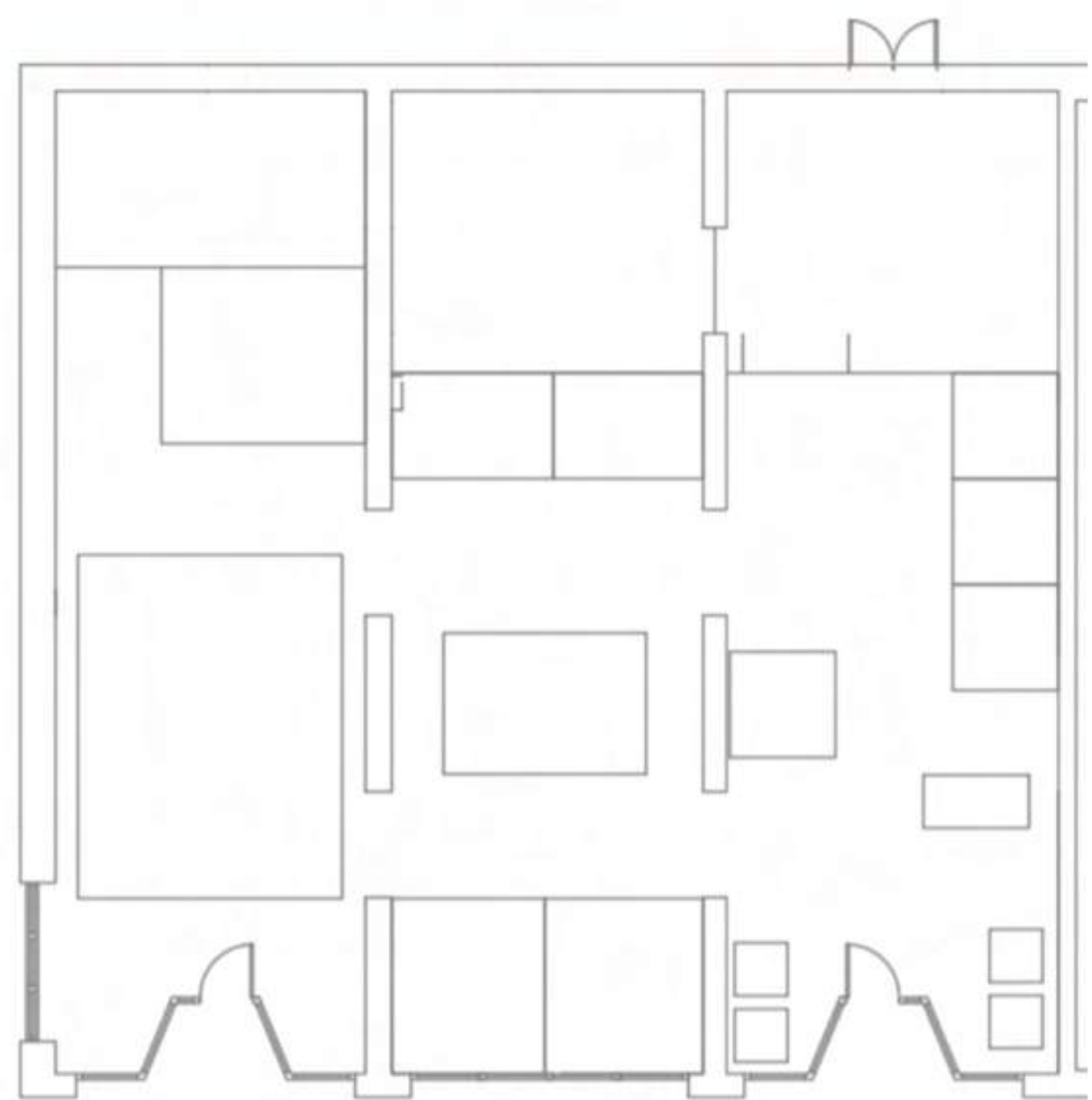
# DUCTWORK



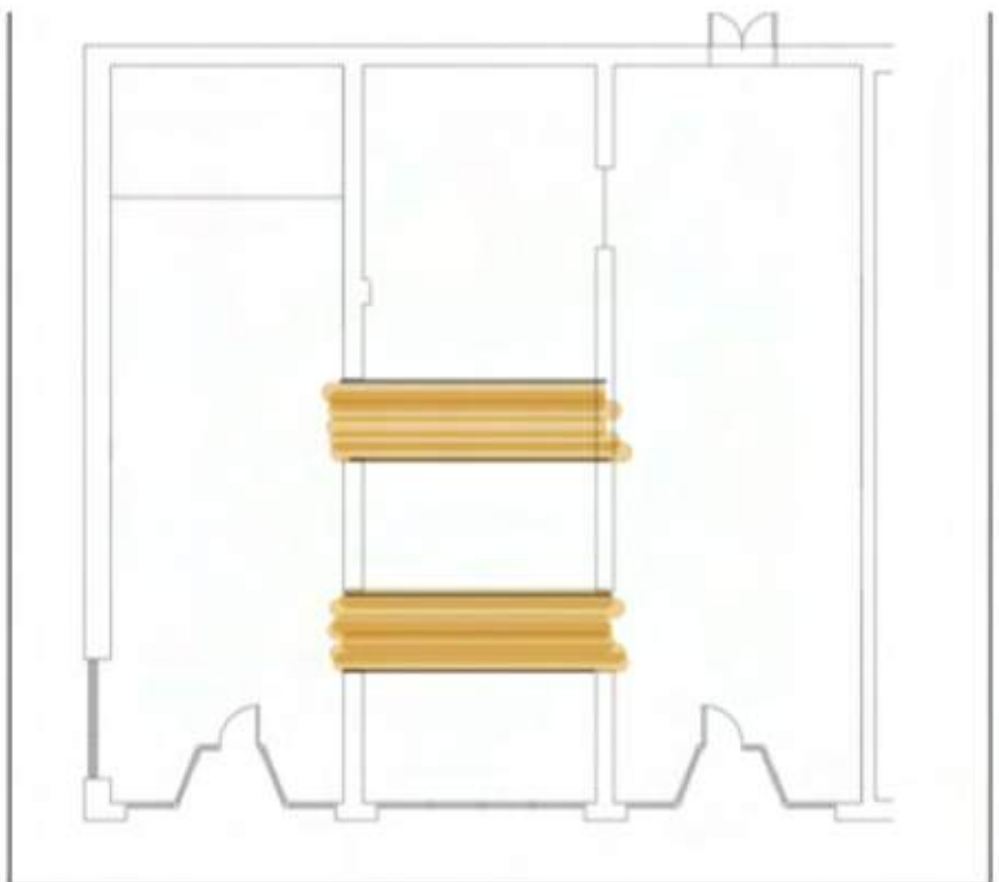
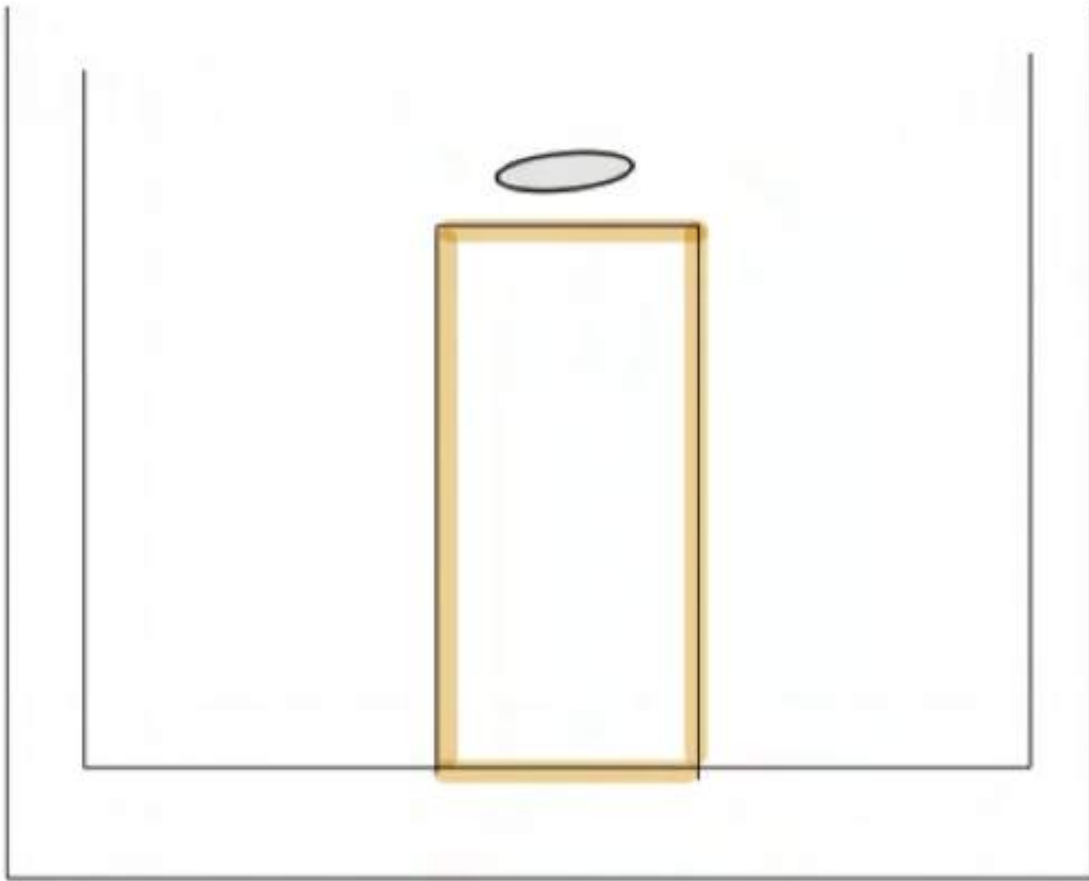
Roof  
15' - 0"

Alley  
2' - 10"

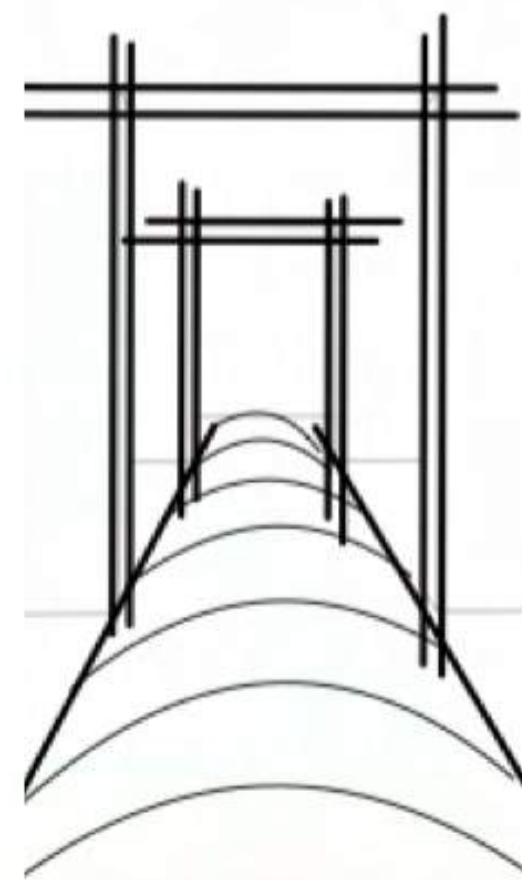
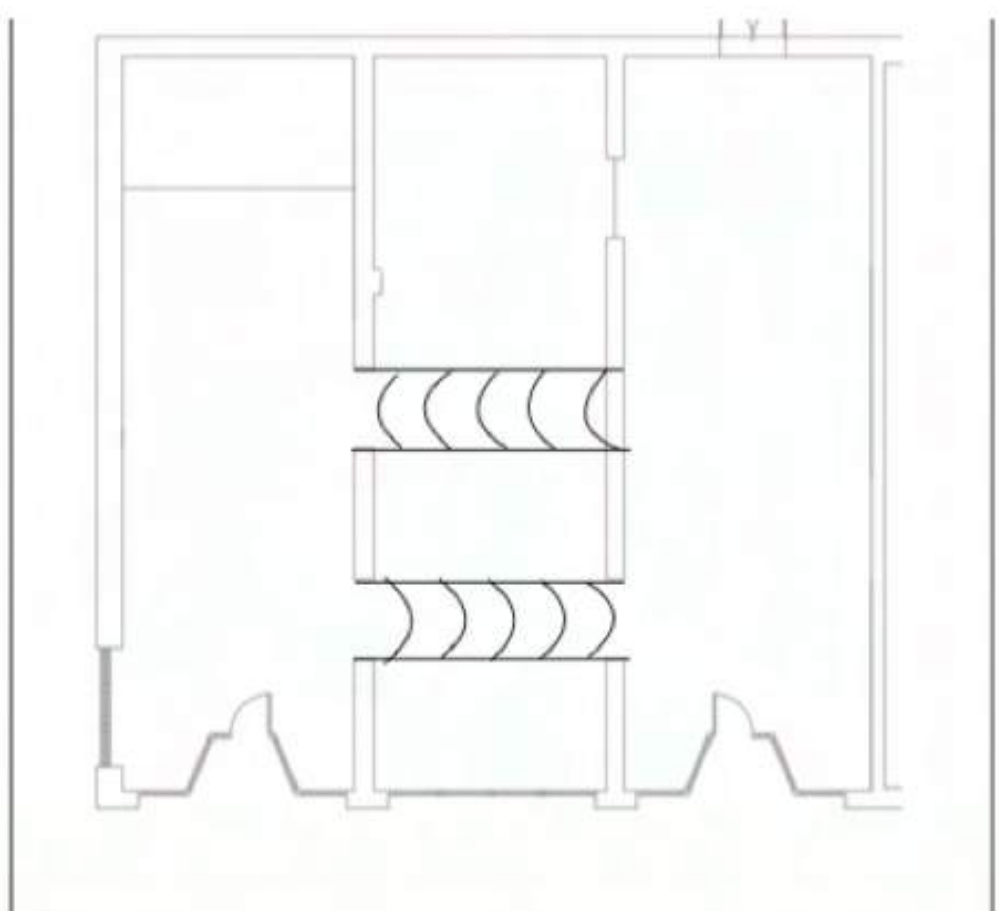
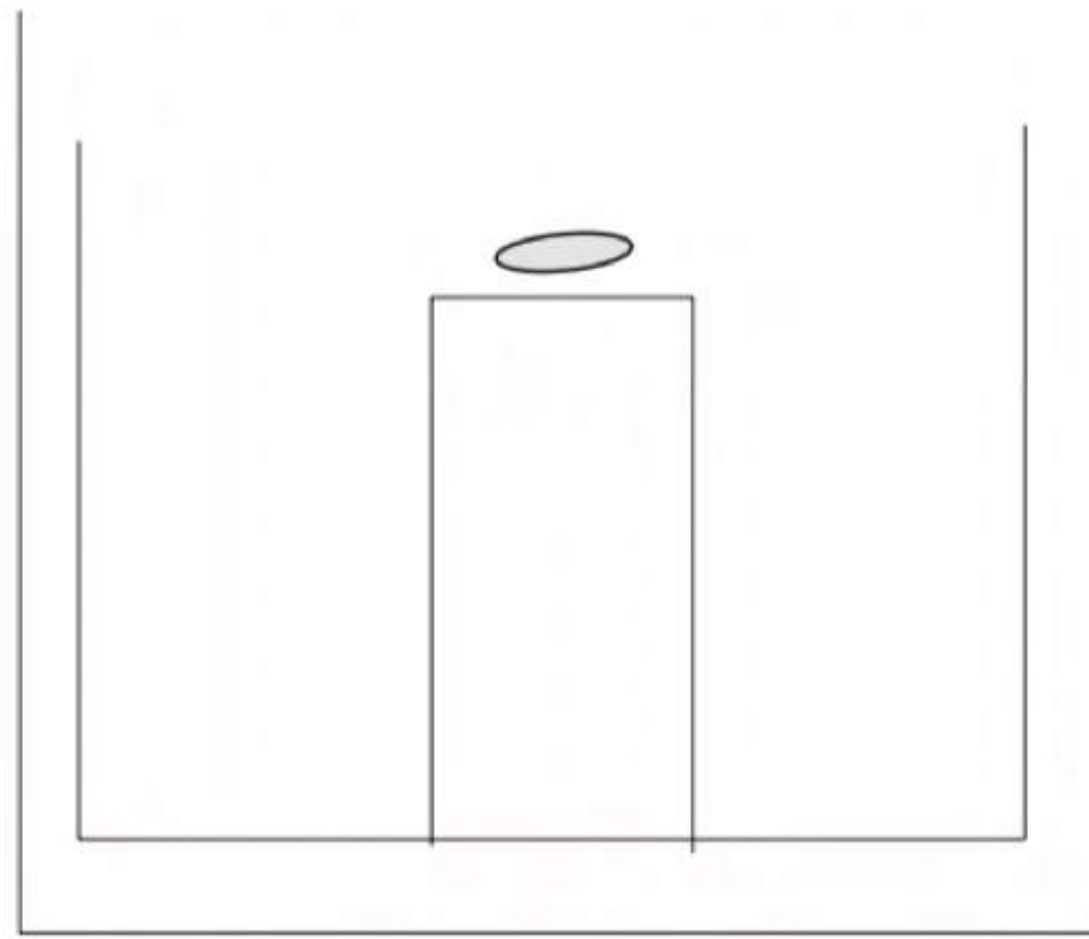
Floor  
0' - 0"



# EXPLORATION

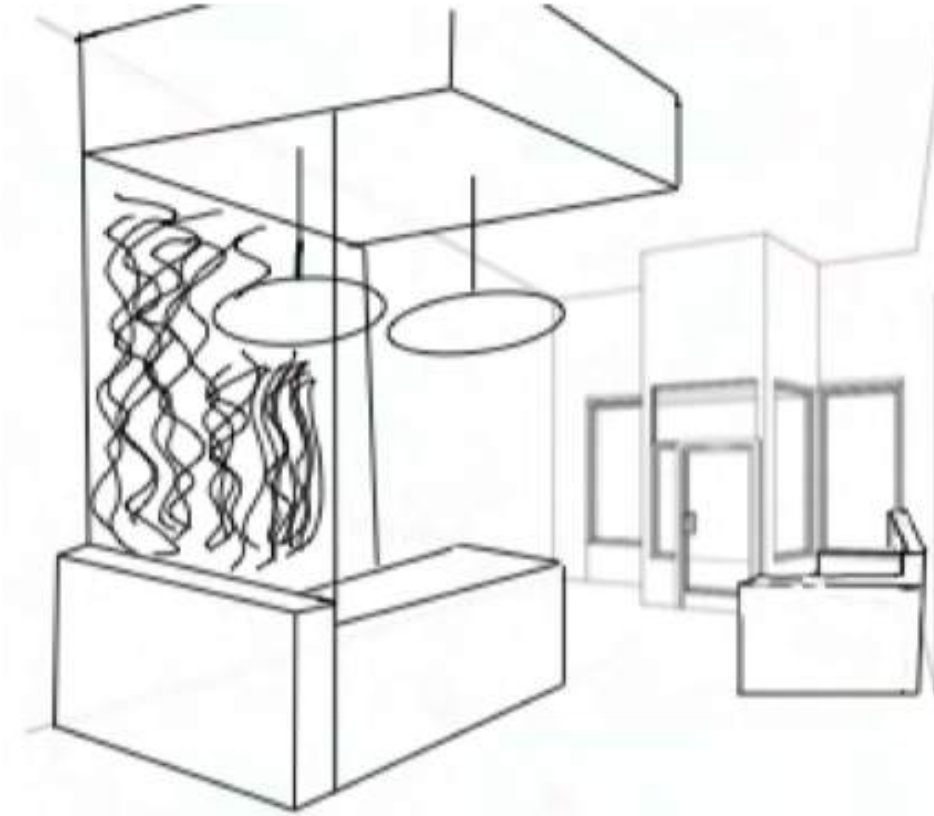
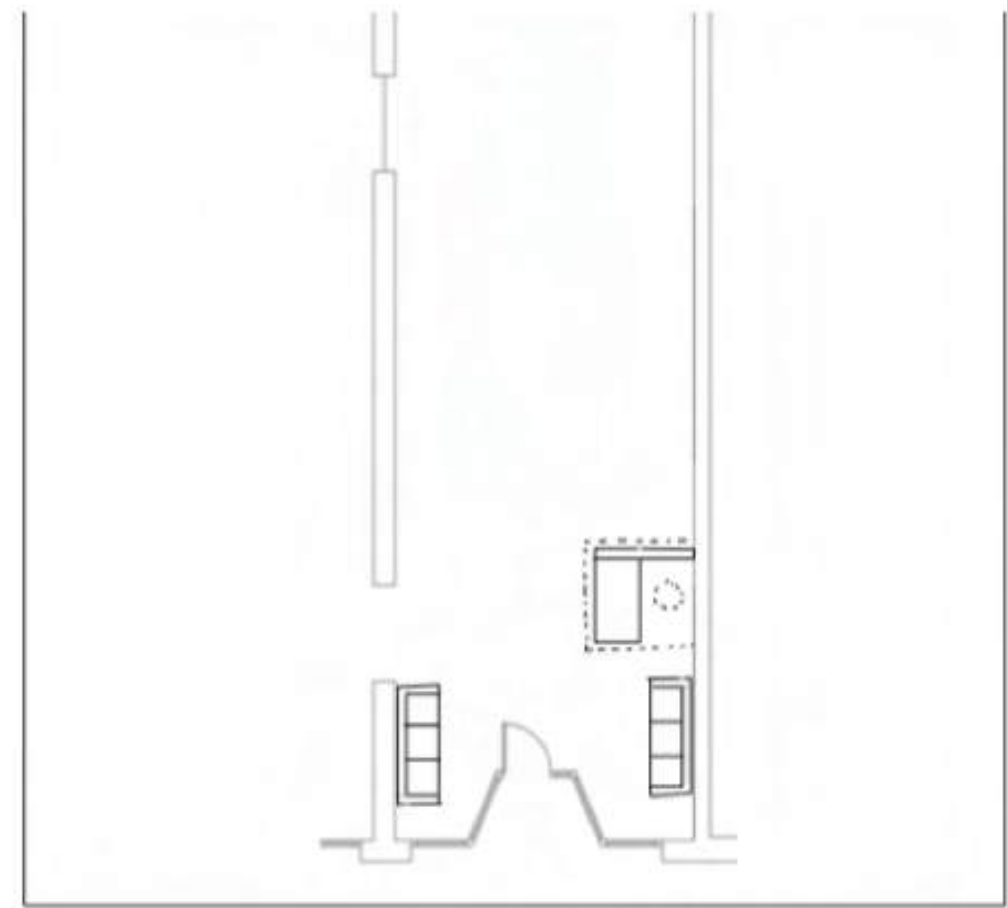
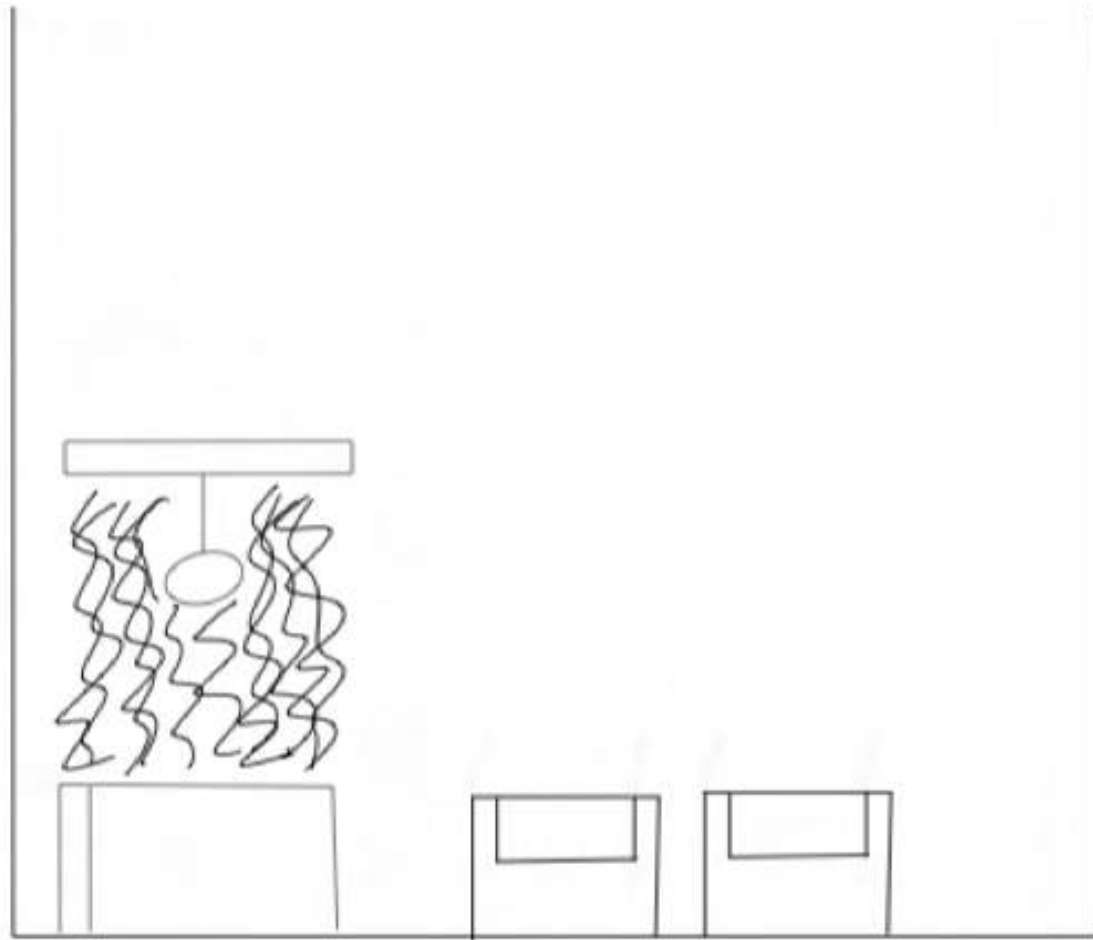


COLOR BLOCKED  
WALKWAYS AND  
DOORFRAME

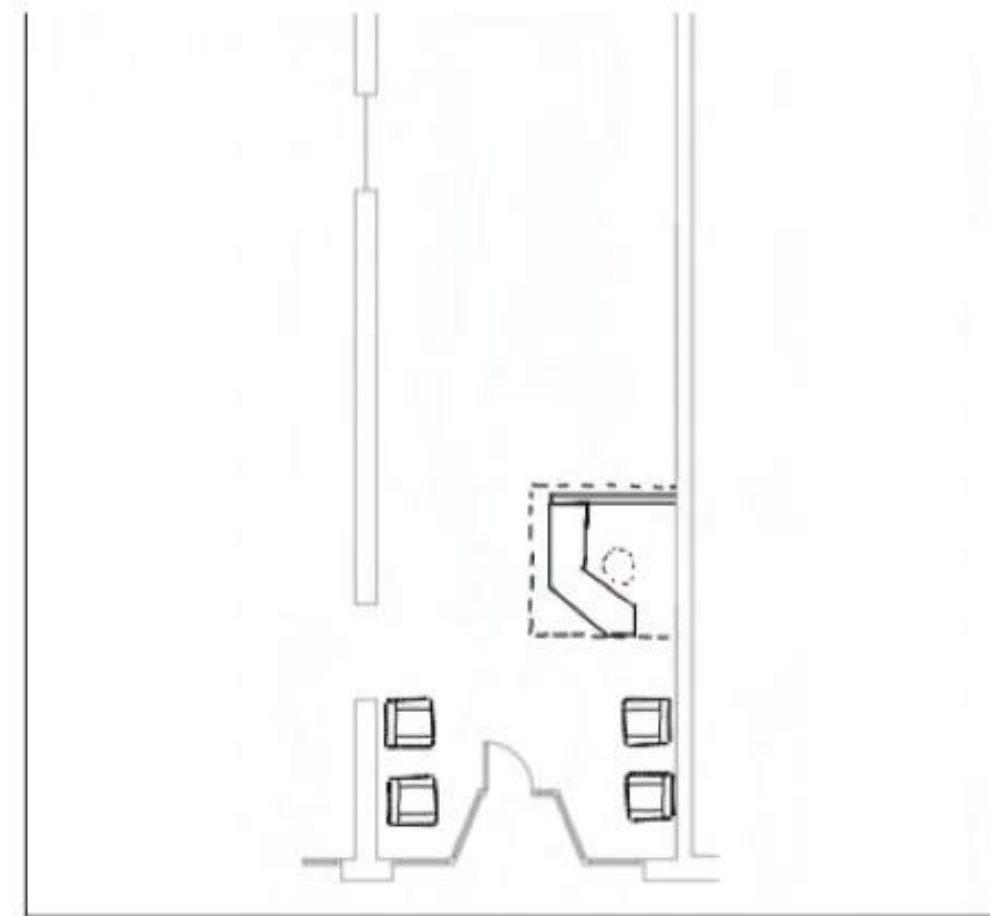
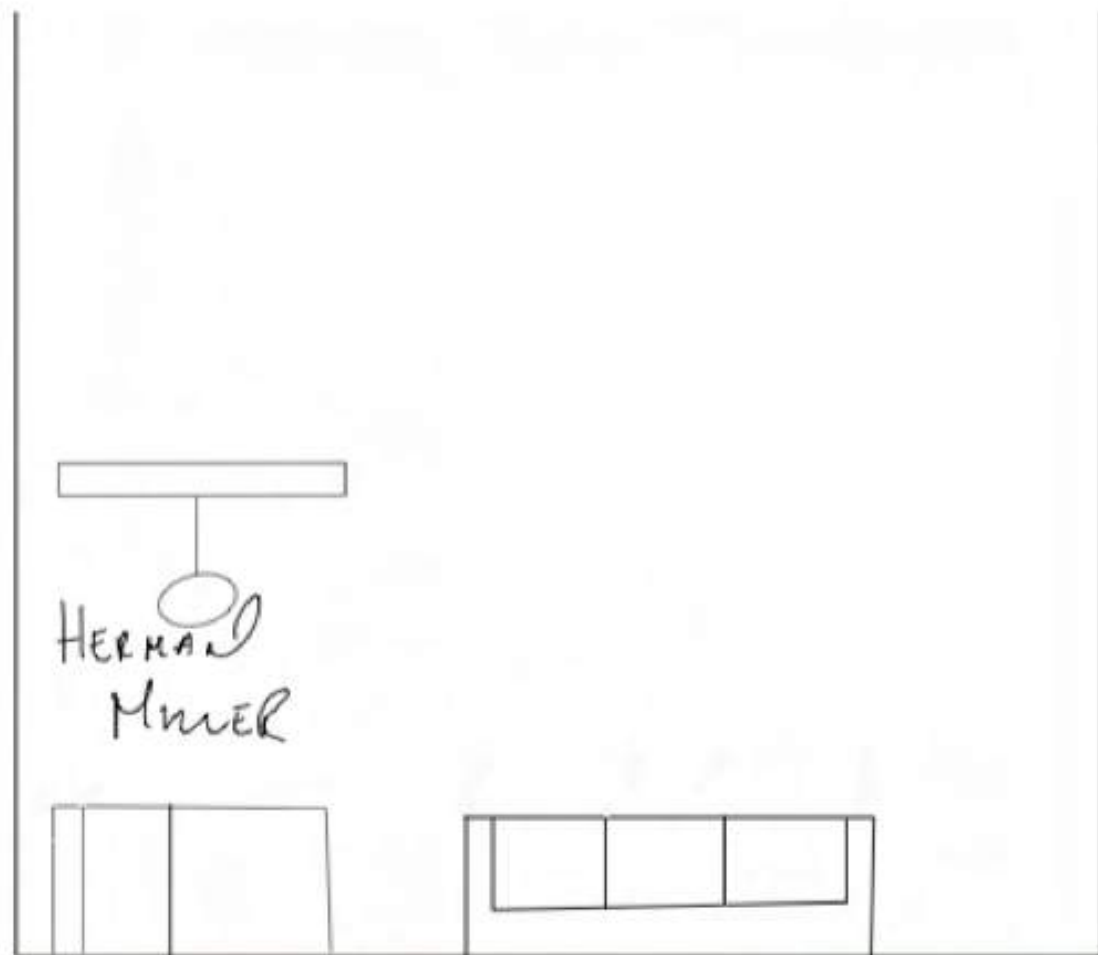


PATTERNED  
FLOORING TO  
INDICATE PREFERRED  
DIRECTION OF TRAVEL

# ENTRY

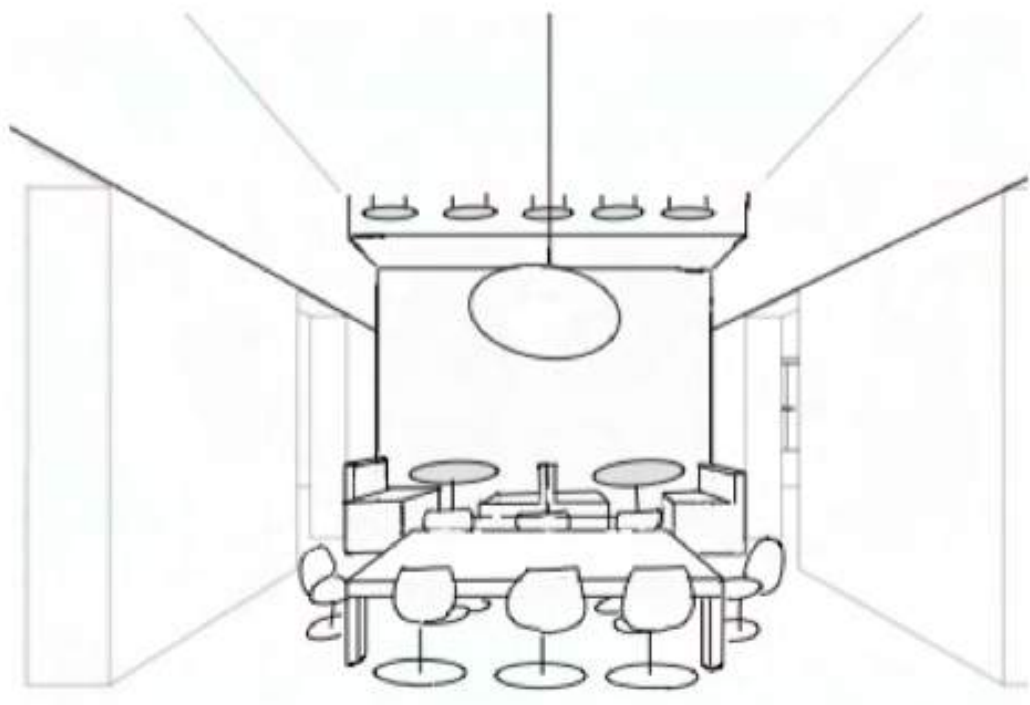
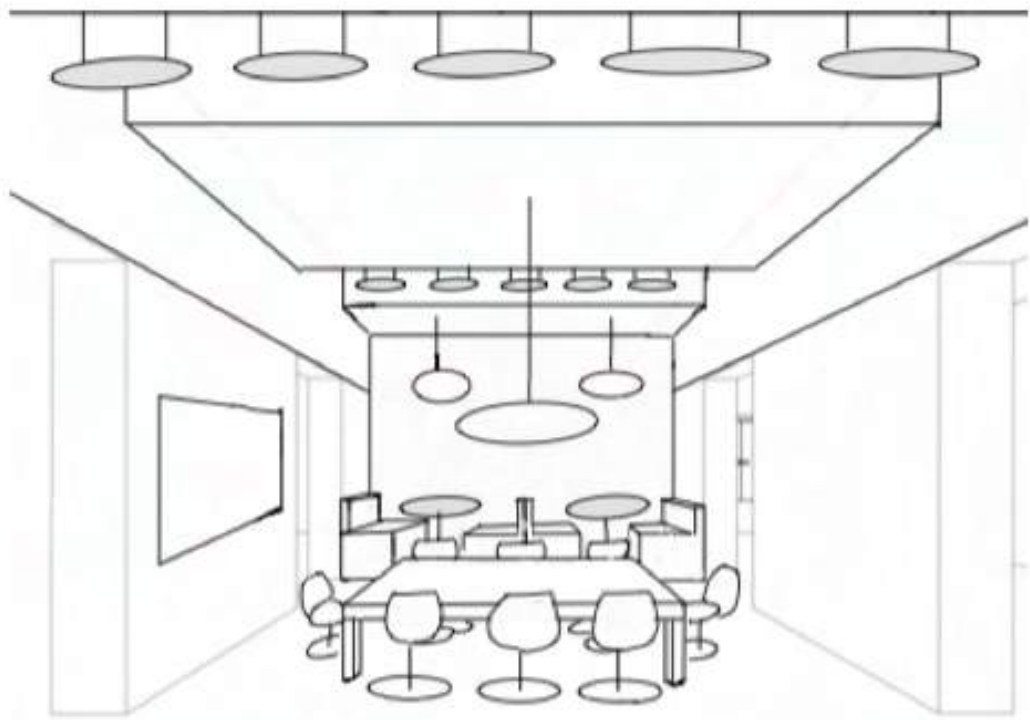
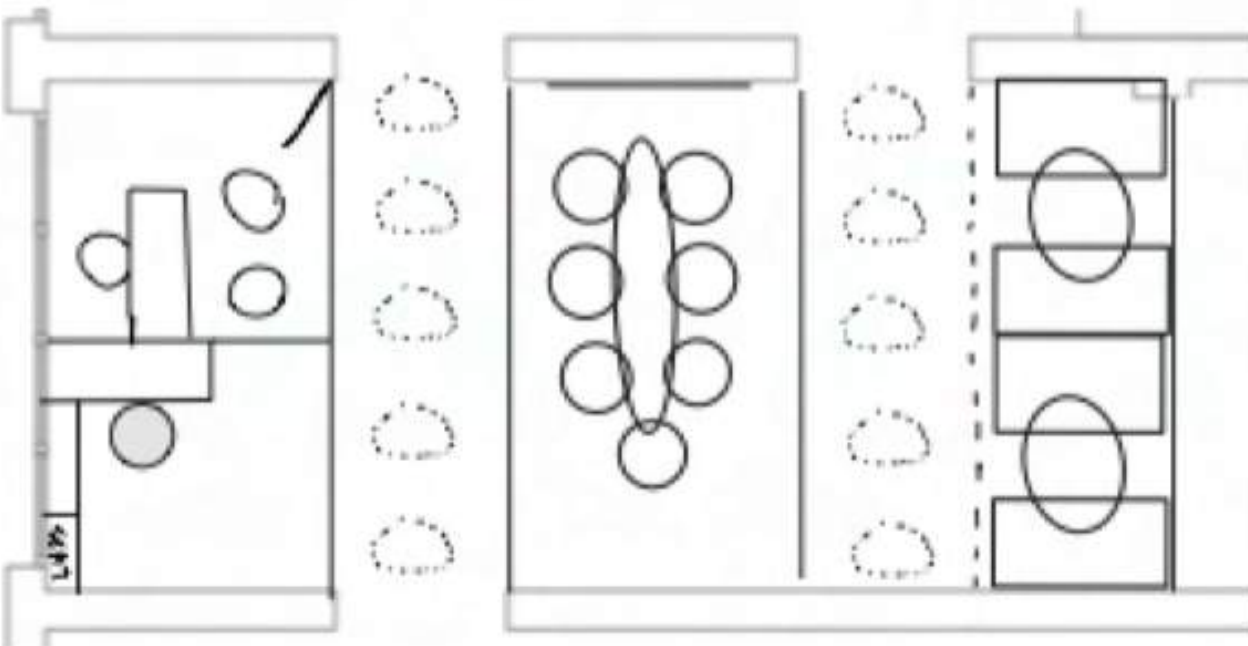
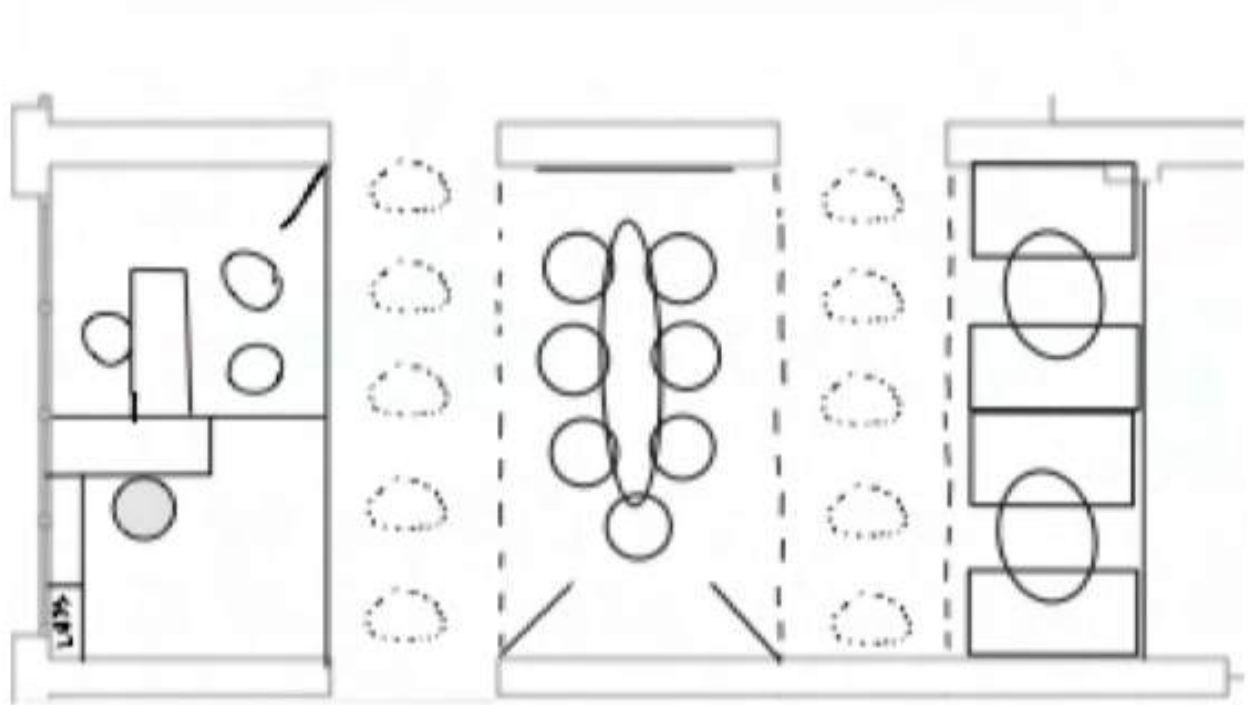
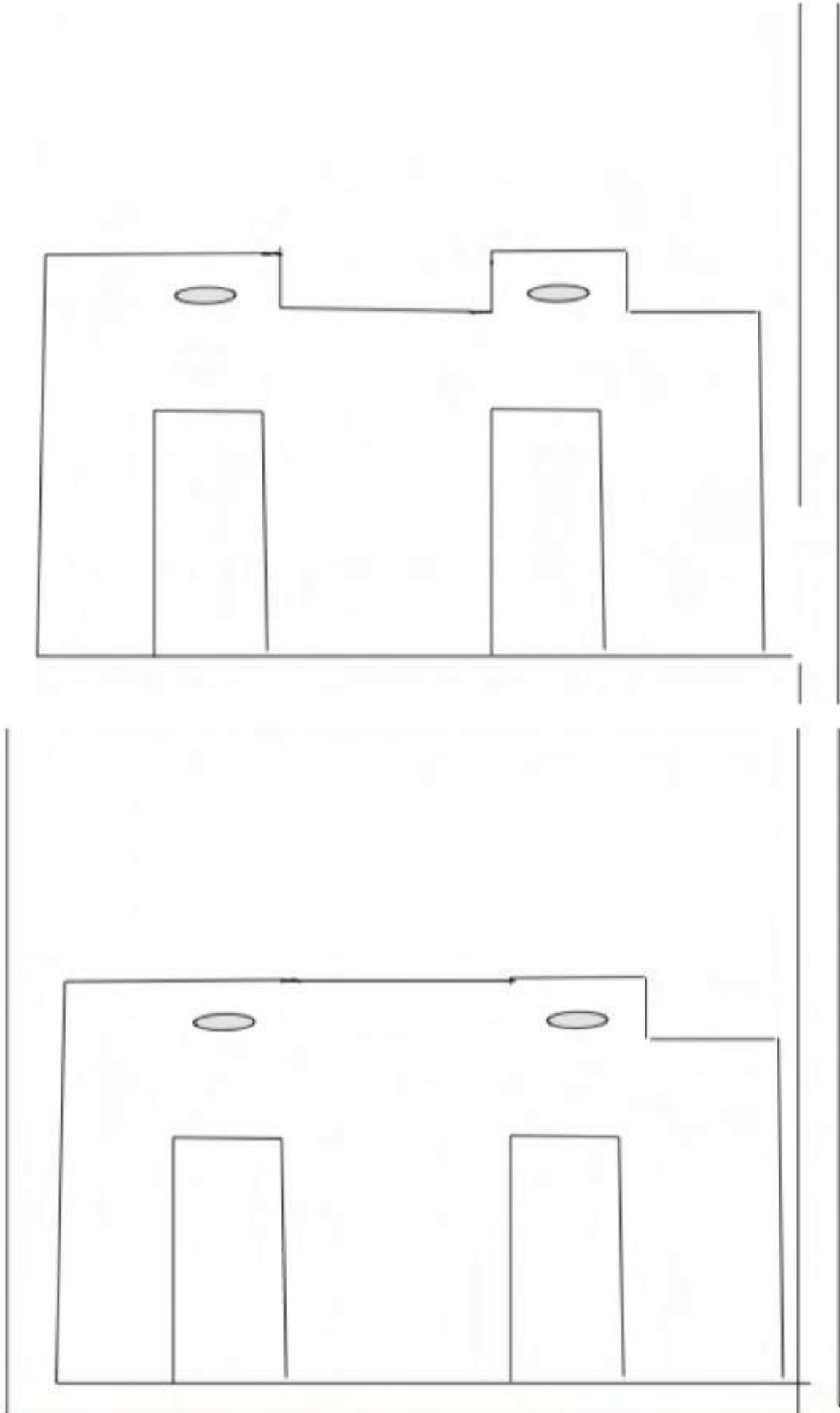


**HALF WALL TO  
SEPARATE  
RECEPTION FROM  
FURNITURE**



**ANGLED DESK TO  
ALLOW FOR A  
MORE  
APPROACHABLE  
APPEARANCE**

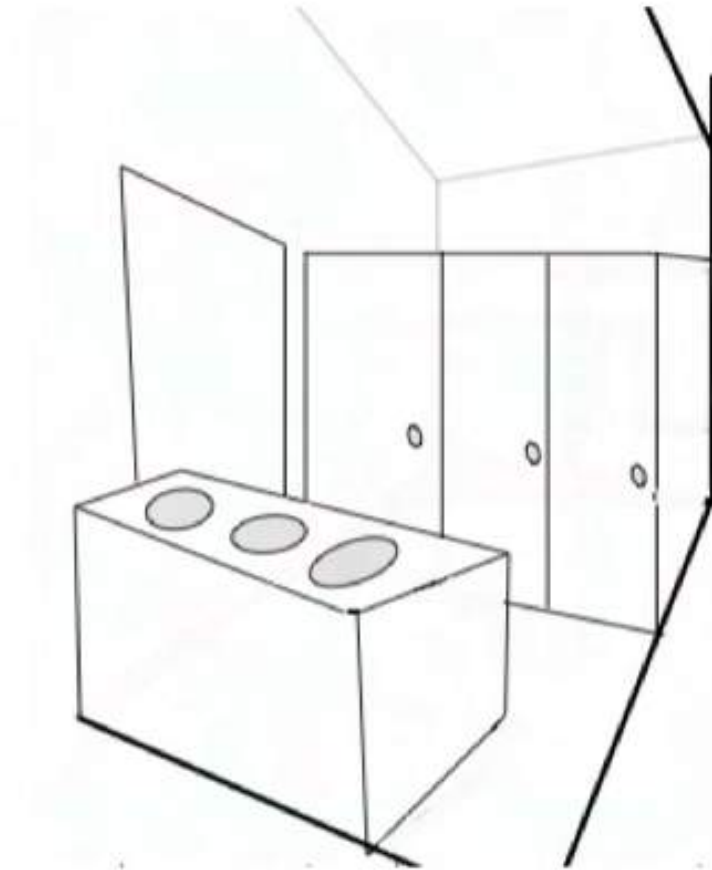
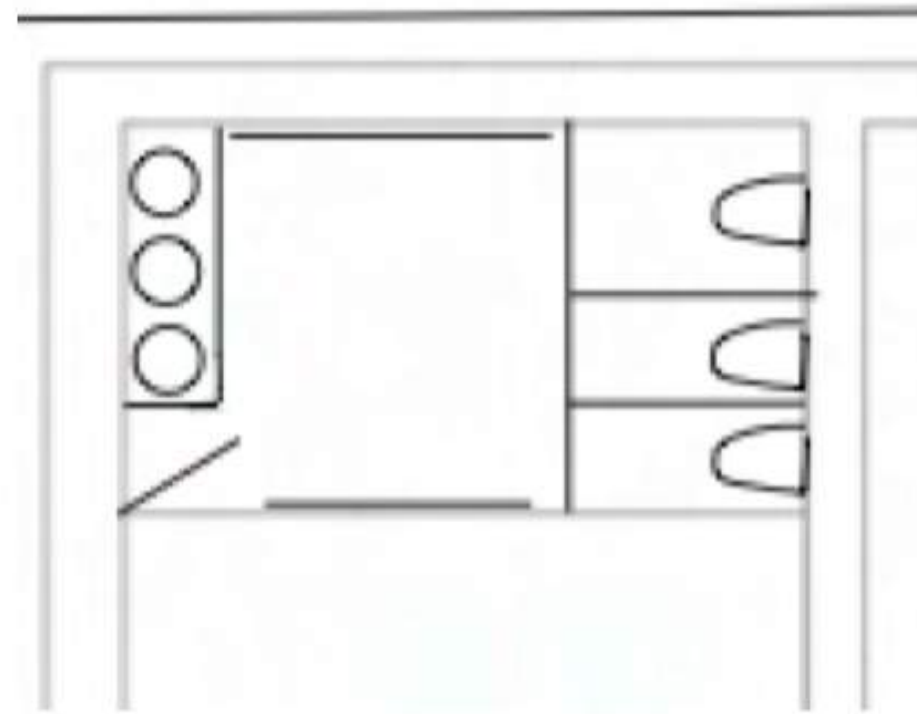
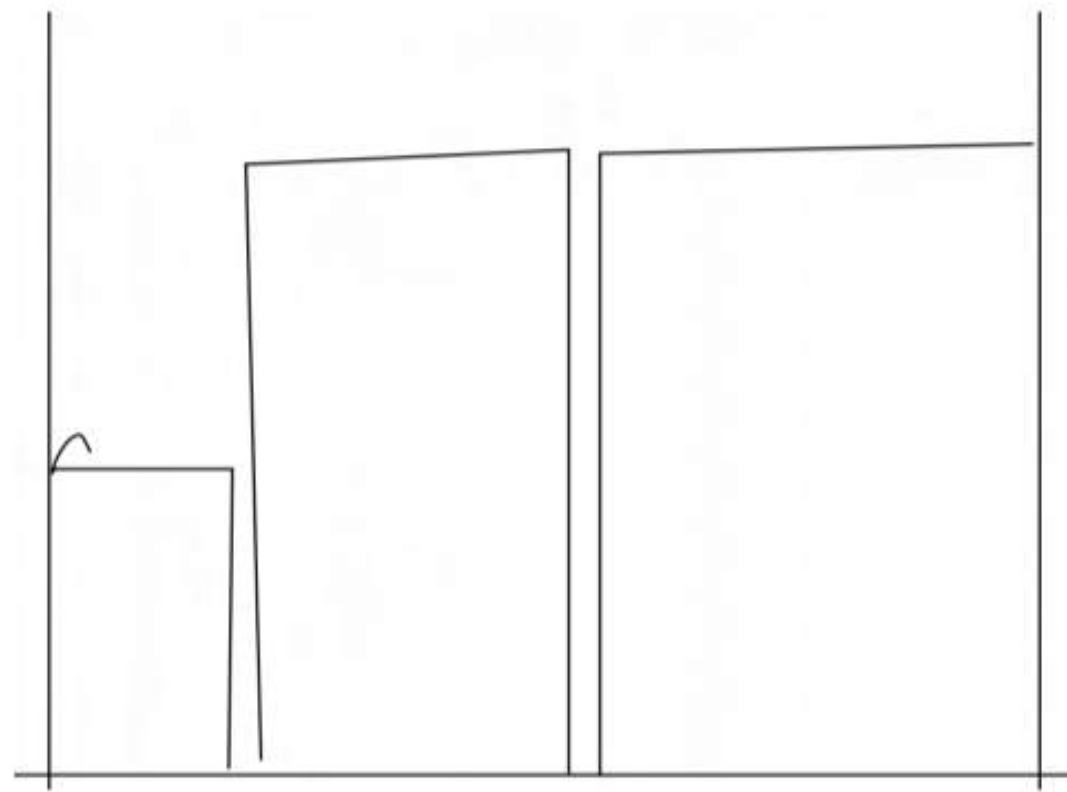
# CEILING/DAYLIGHTING



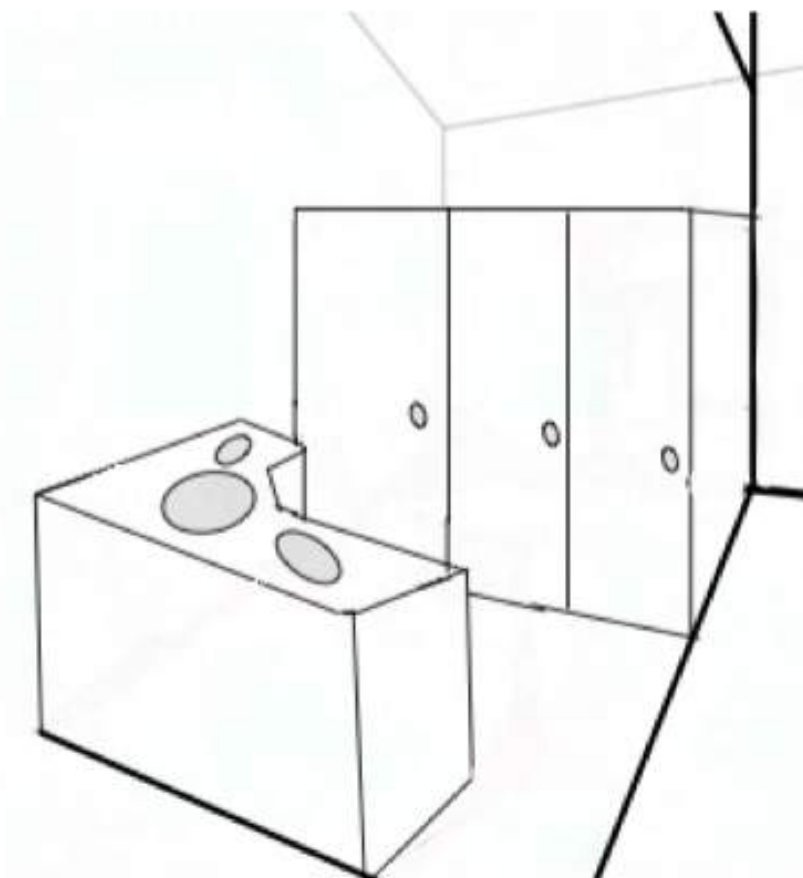
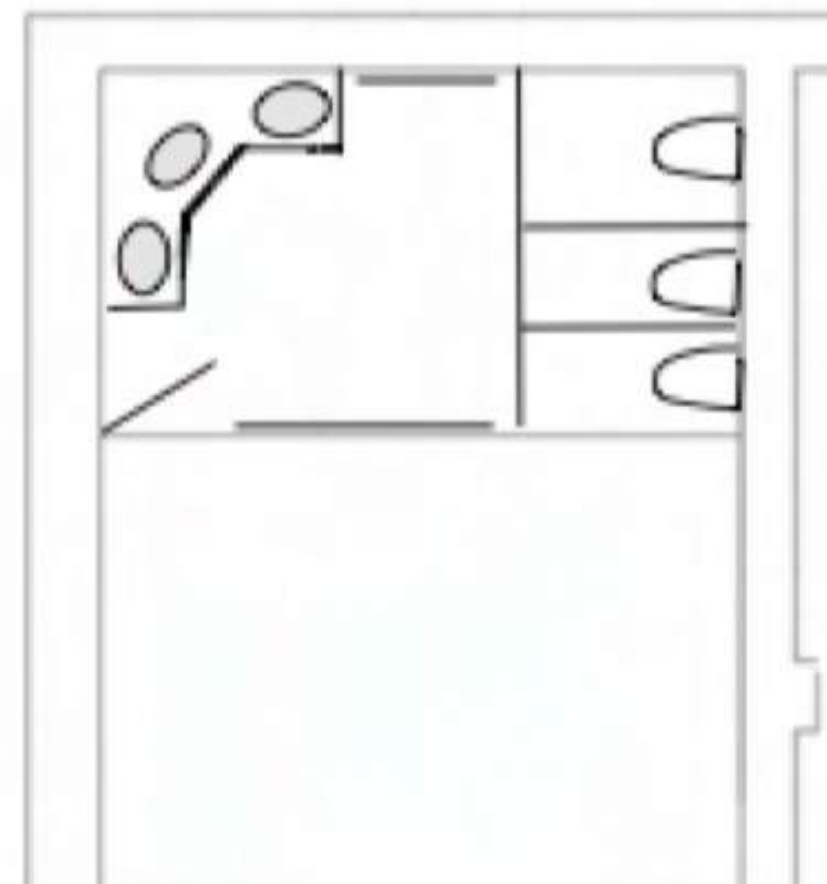
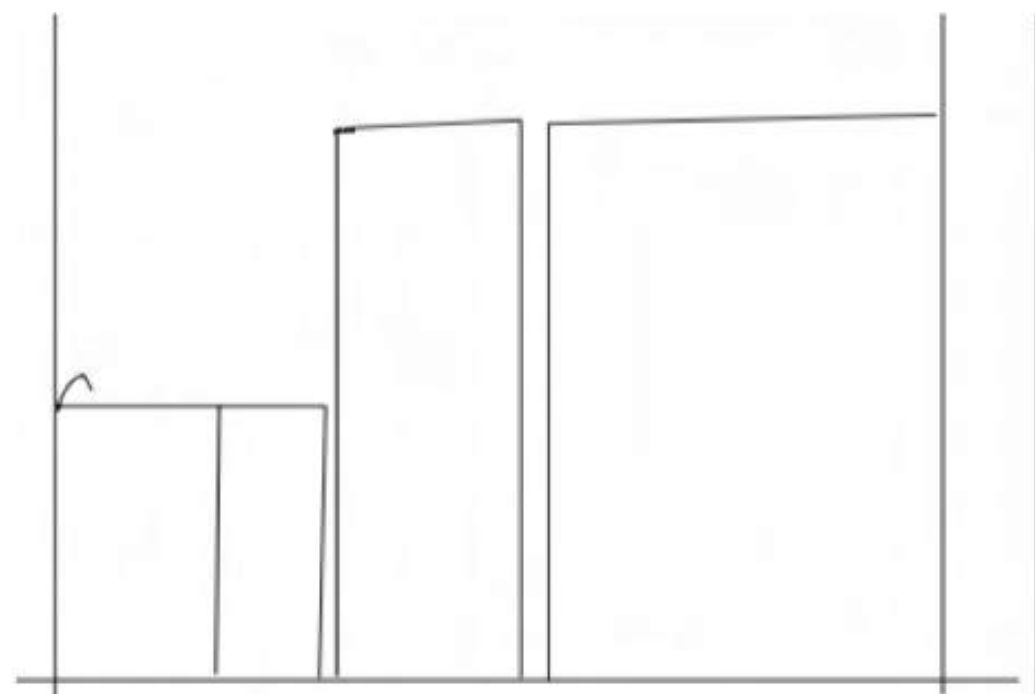
**LOWERED  
CEILING  
HEIGHTS FOR  
SEPARATION.**

**ONE  
LOWERED  
CEILING  
LOCATION.**

# SUPPORT SPACES



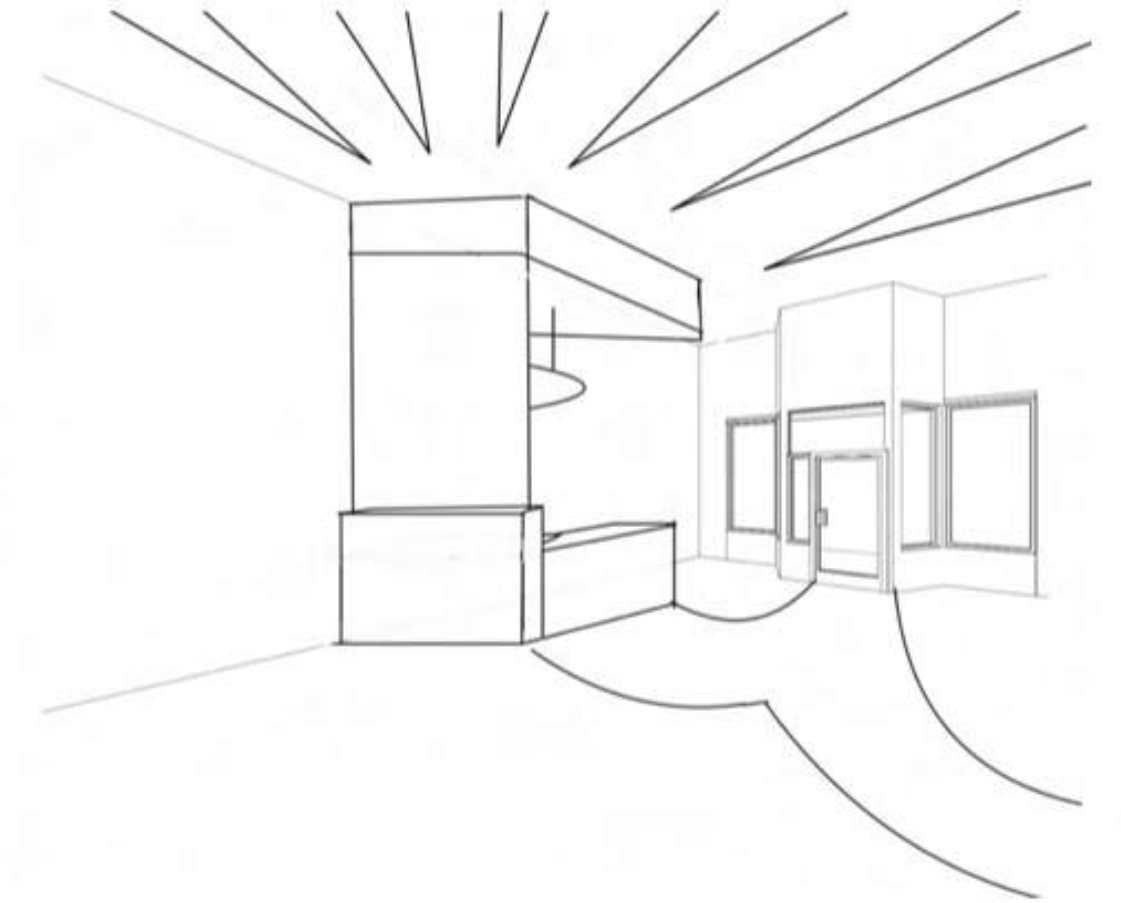
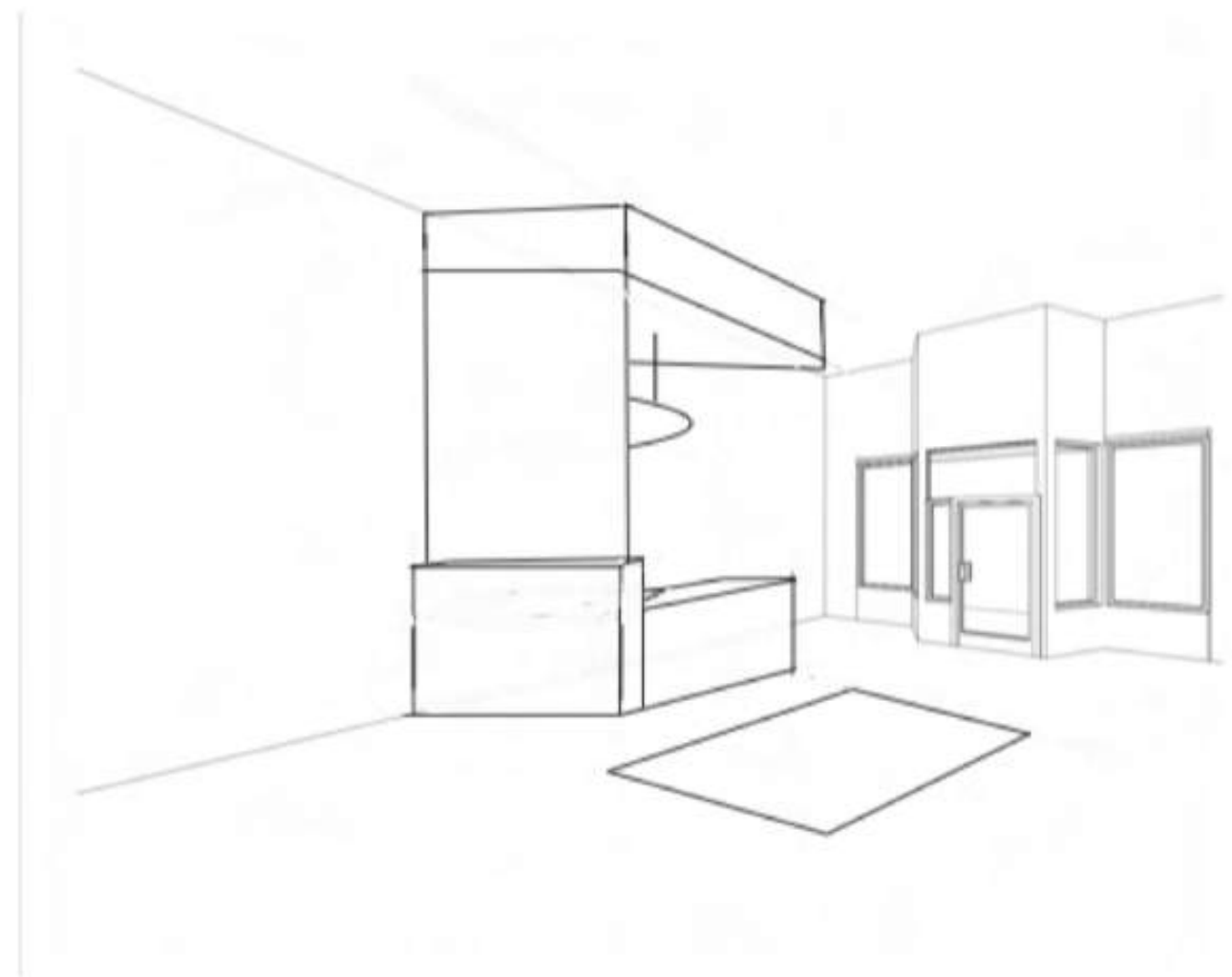
**SINKS ALONG WALL,  
LARGE MIRROR**



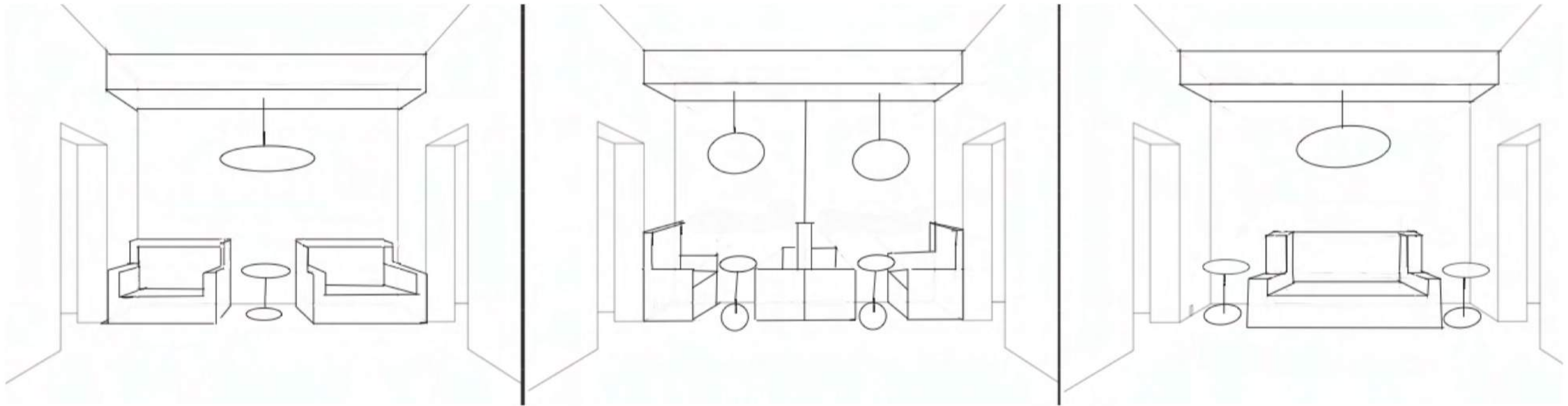
**ANGLED SINKS FOR  
MORE ENTRY SPACE**



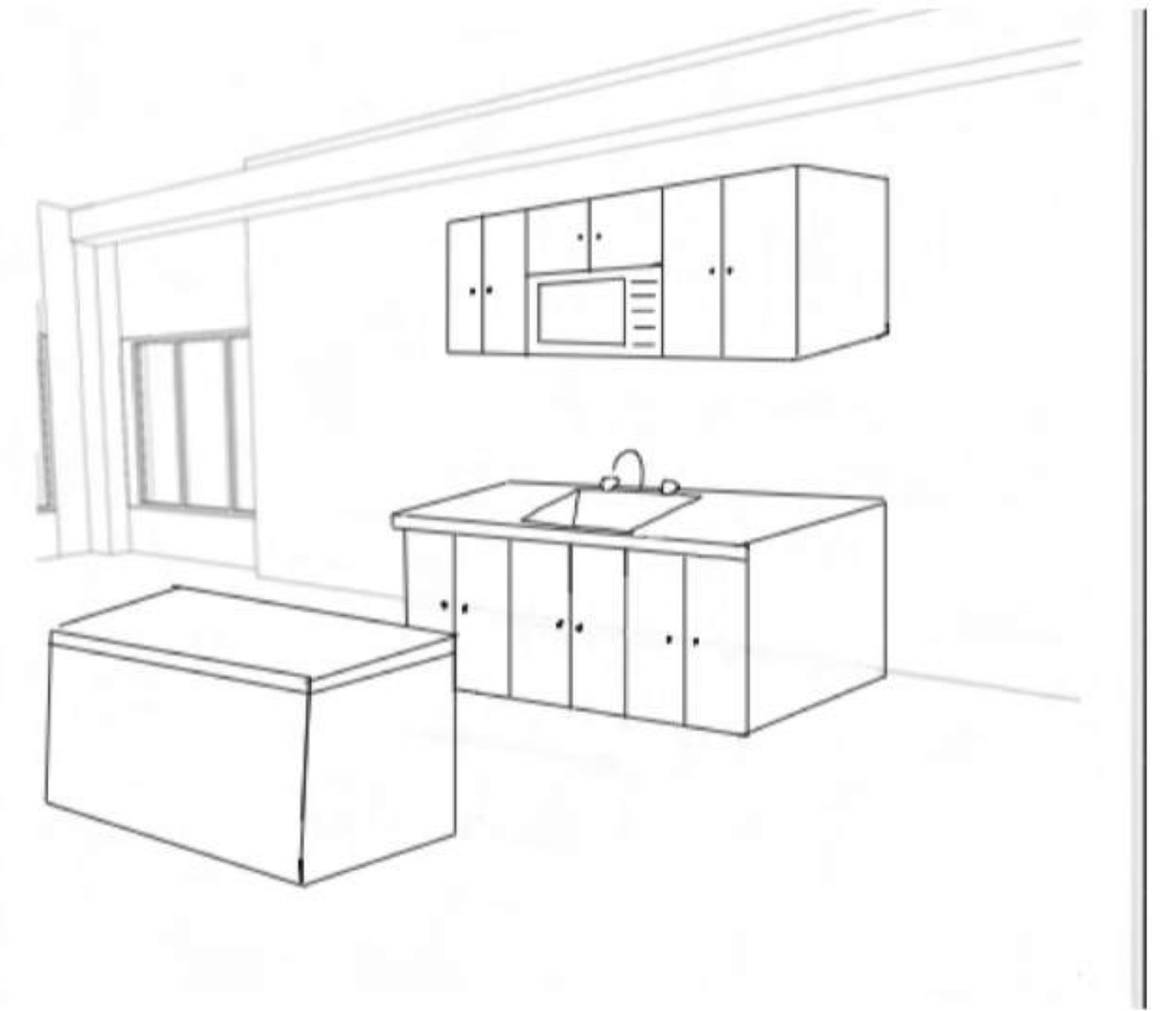
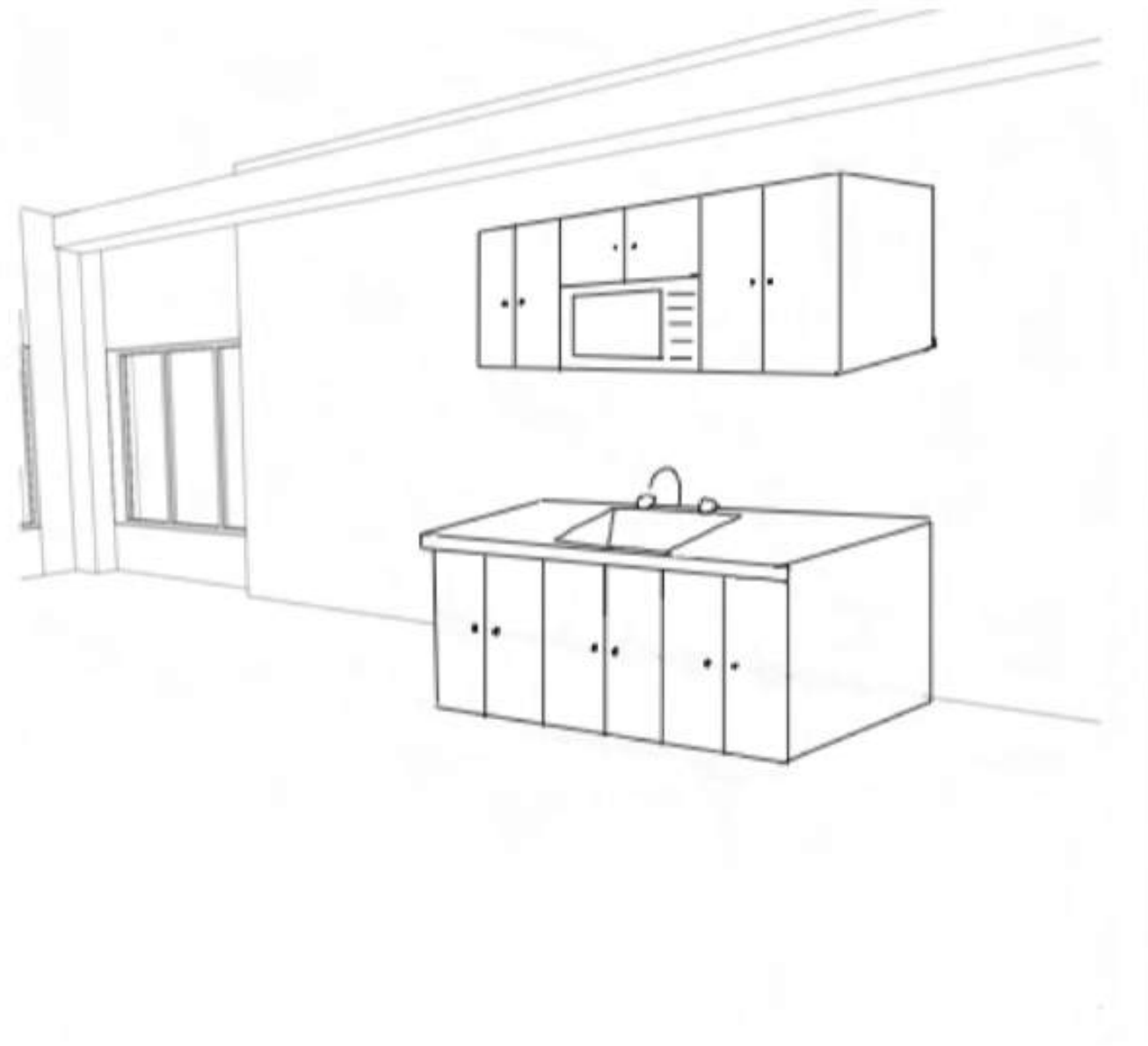
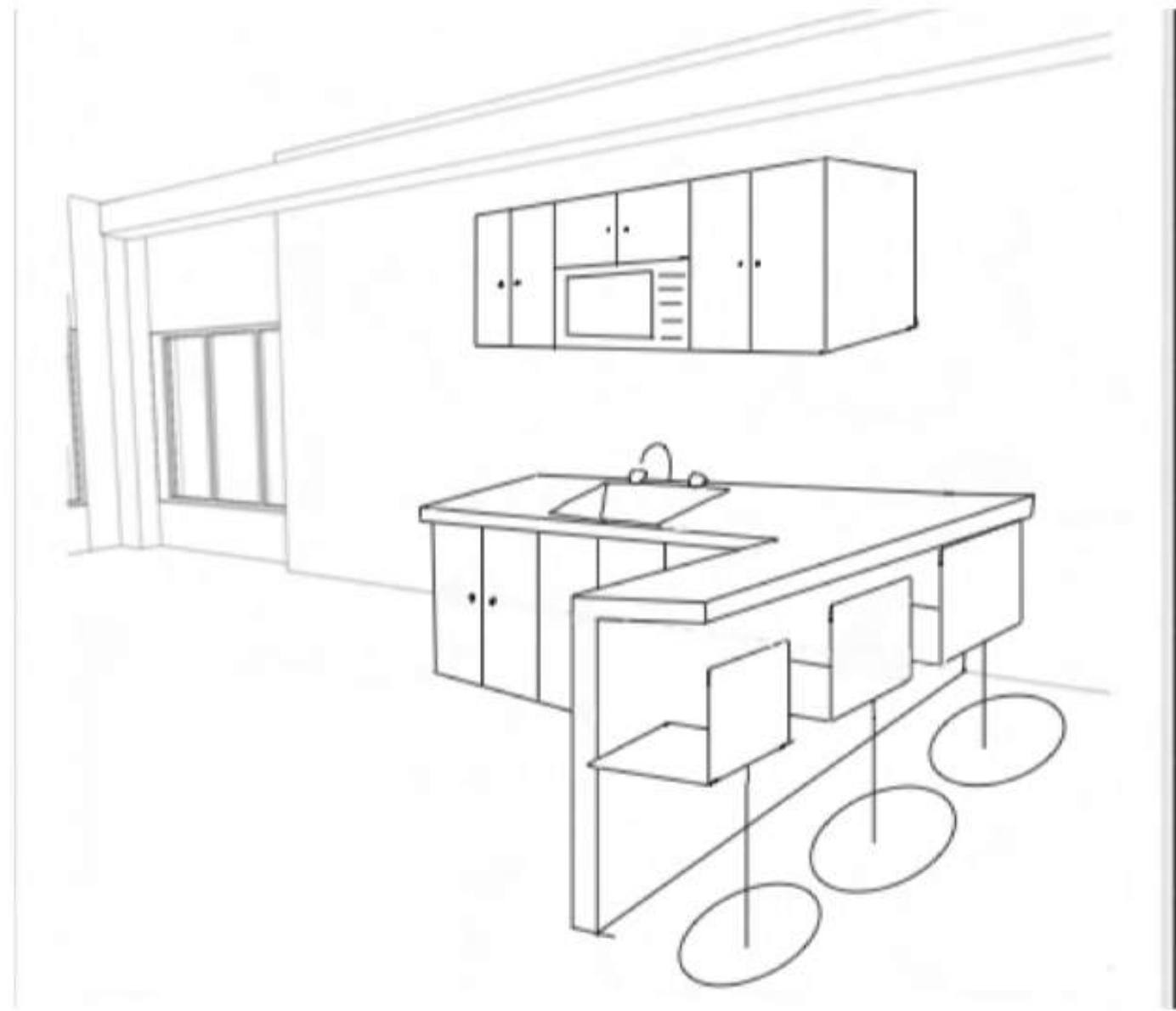
# ENTRY/RECEPTION



# LOUNGE



# SERVICE COUNTER



# OPEN WORK AREA





