

Portfolio 1

IDSN 3102 Fall Semester

Natalya Hall

Stakeholder Profile

Owner

- Leasing Company
 - Wants to see their building leased to a profitable tenant who will remain in the space for a long period of time.

Client

- Herman Miller
 - Herman Miller wants to have a space where they can display and sell their products.

Users

- Greenville residents, East Carolina University , Event attendees, Visitors to Greenville
 - The users want to have a space where they shop and easily find the Herman Miller products they want. The space will be used as a retail showroom, along with being an event space.



HermanMiller



Greenville
NORTH CAROLINA

Site Profile

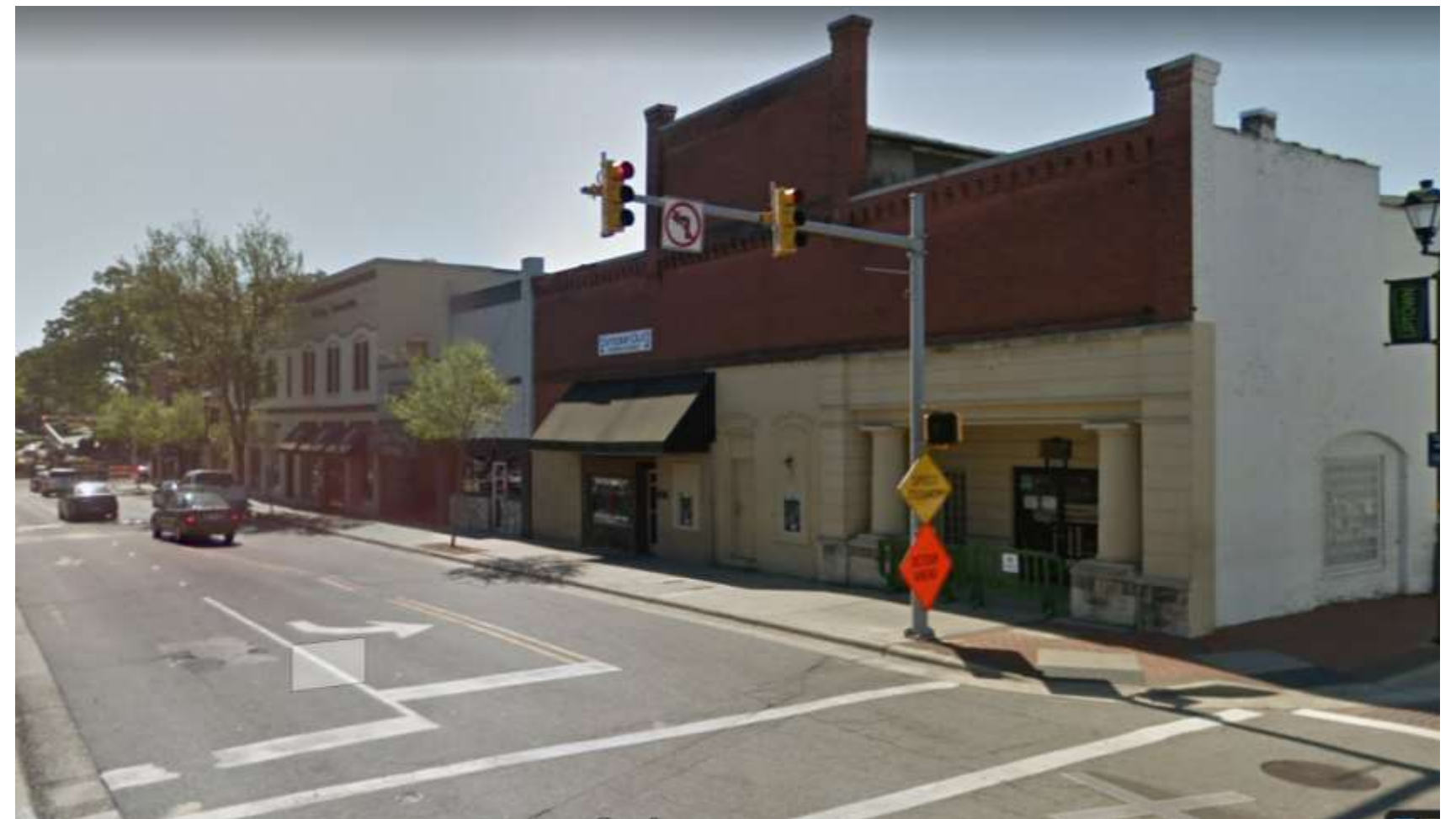
Location:

E 5th Street and Cotanche Street

201 E 5th Street, Greenville, NC 27858

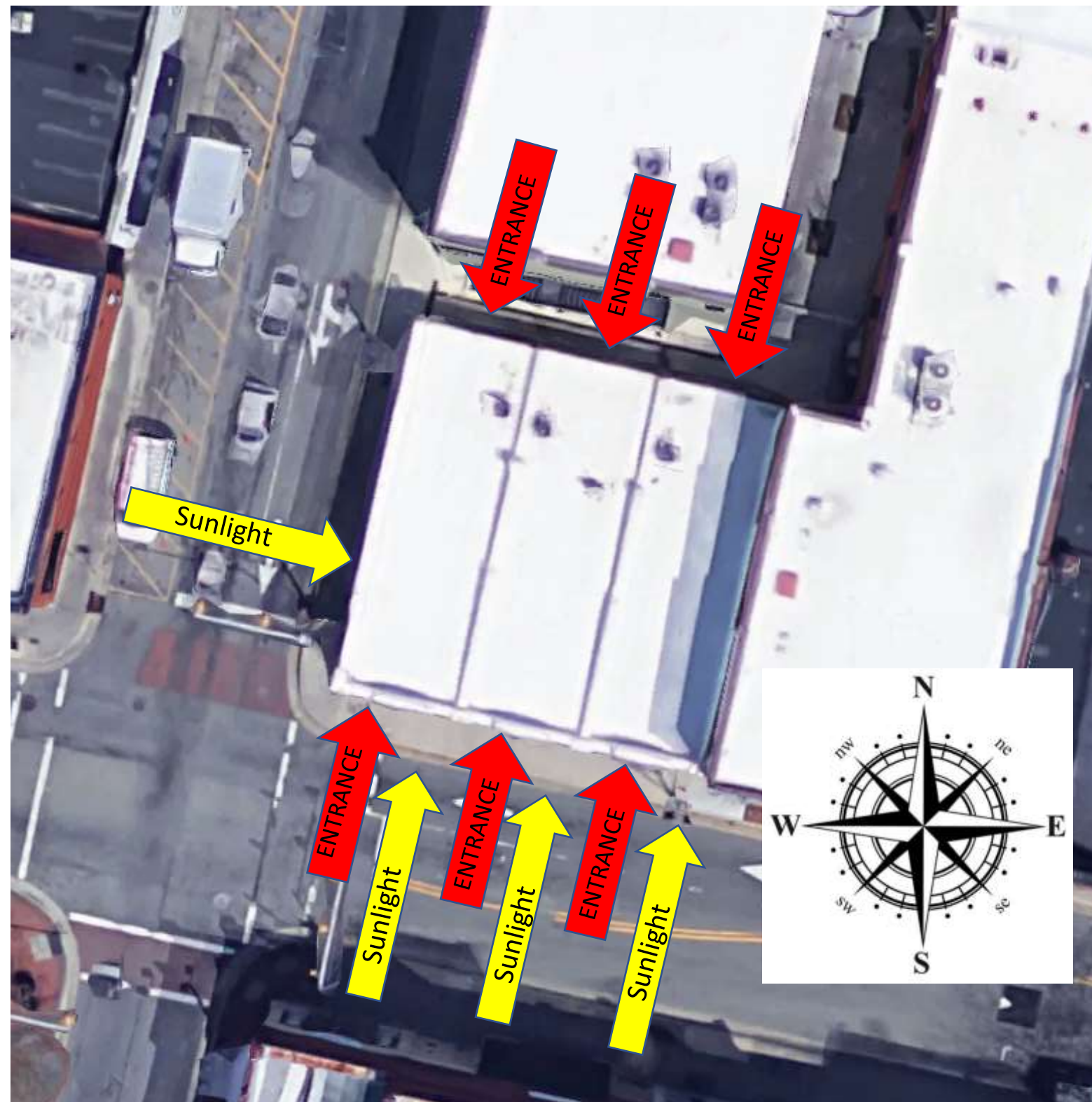
Estimated Square Footage:

3,000± sqft



Site Analysis

Usable square footage: 2,905 square feet



Design Problem Statement

Issues affecting the design:

- Creating a flow through the space that encourages visitors to go through the whole showroom.
- Using the natural light that is available to its full extent.
- Lighting other areas of the building that do not have natural light.
- Creating a space that functions as a showroom as well as an event space.
- Making sure the showroom is accessible to all and includes ADA design standards.



Accessible Design:

Universal design-

Universal design is making spaces that the highest amount of people can use. The goal for universal design is to remove barriers for any person visiting the space. Universal design doesn't include outliers for accessibility needs.

Inclusive Design-

Inclusive design focuses on making sure a space can be fully utilized and enjoyed by everyone, no matter their accessibility needs. Inclusive design is coupled with ADA design standards, along with additional accessibility aids.

ADA Standards:

Entrances – At least 60% of entrances must be accessible

Doorways – Doorways have to be at least 36" across

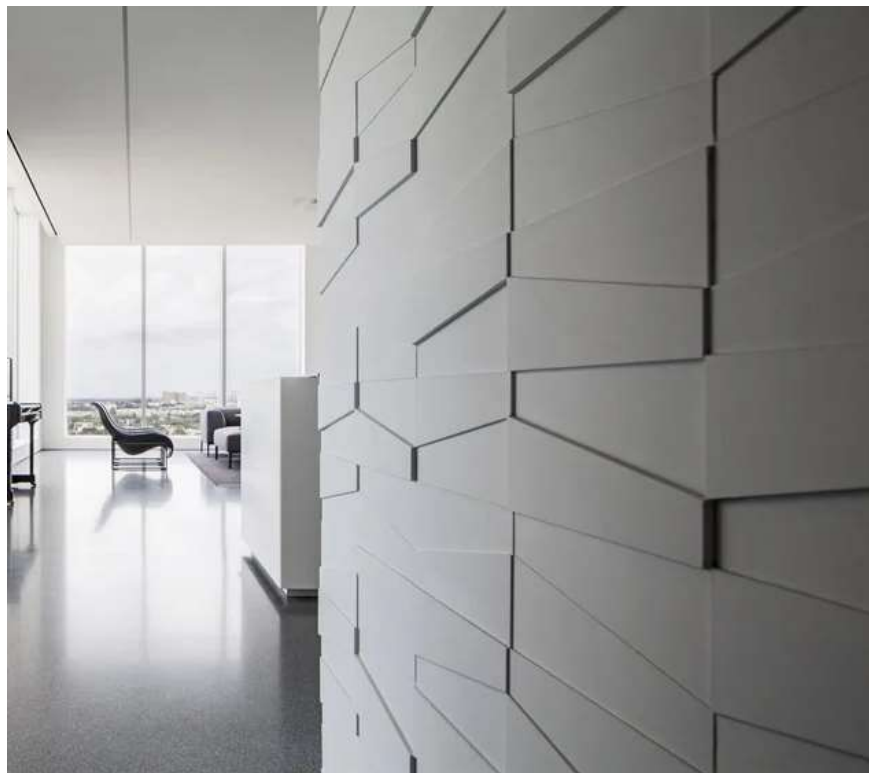
Restrooms – Toilets have to be 17"-19" from floor to top of the seat, a 60" diameter of turning space in the stall, rear and side grab bars are required

Heights - Tabletop heights must be 28"-34", countertop heights have to be under 34" tall and over 36" wide

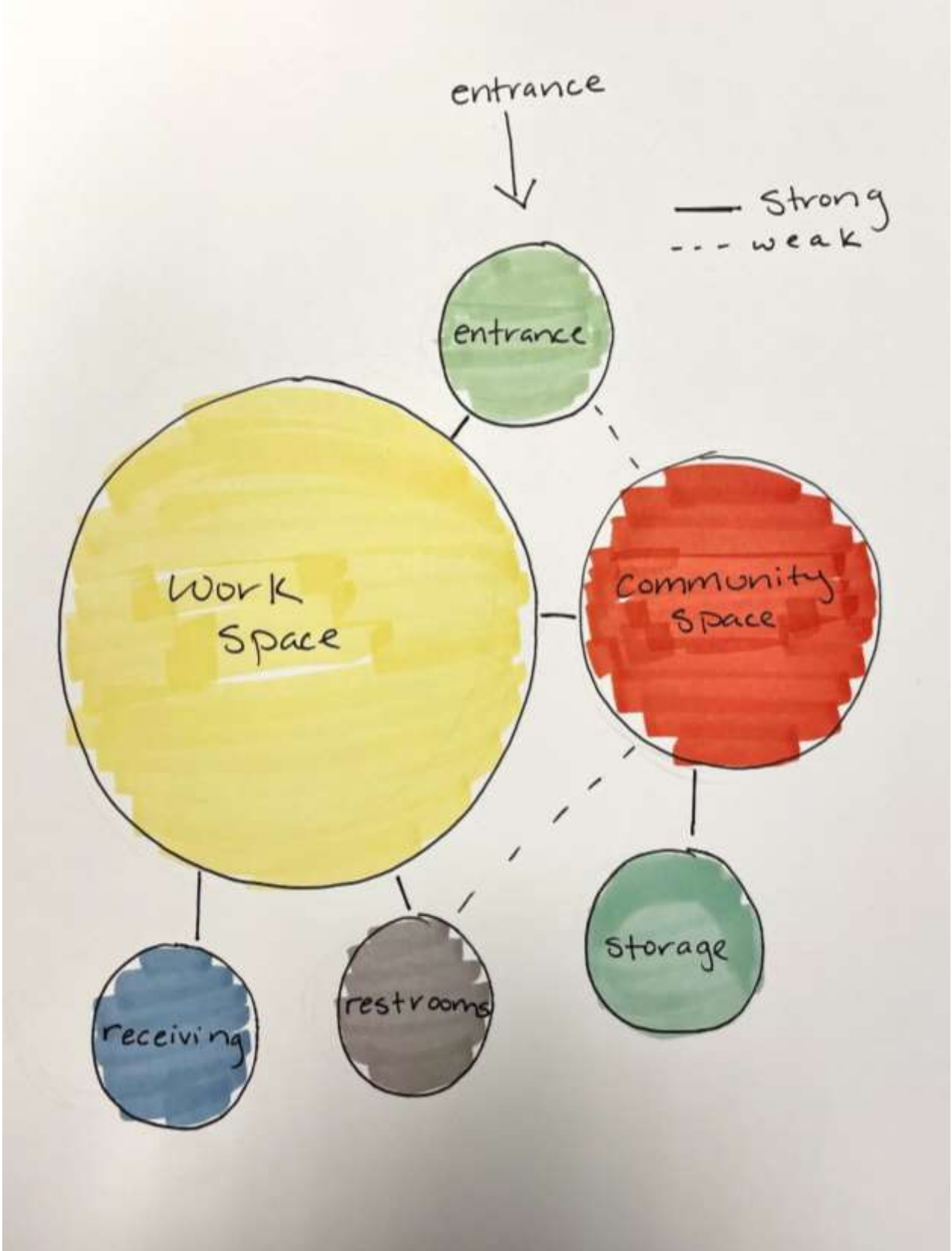
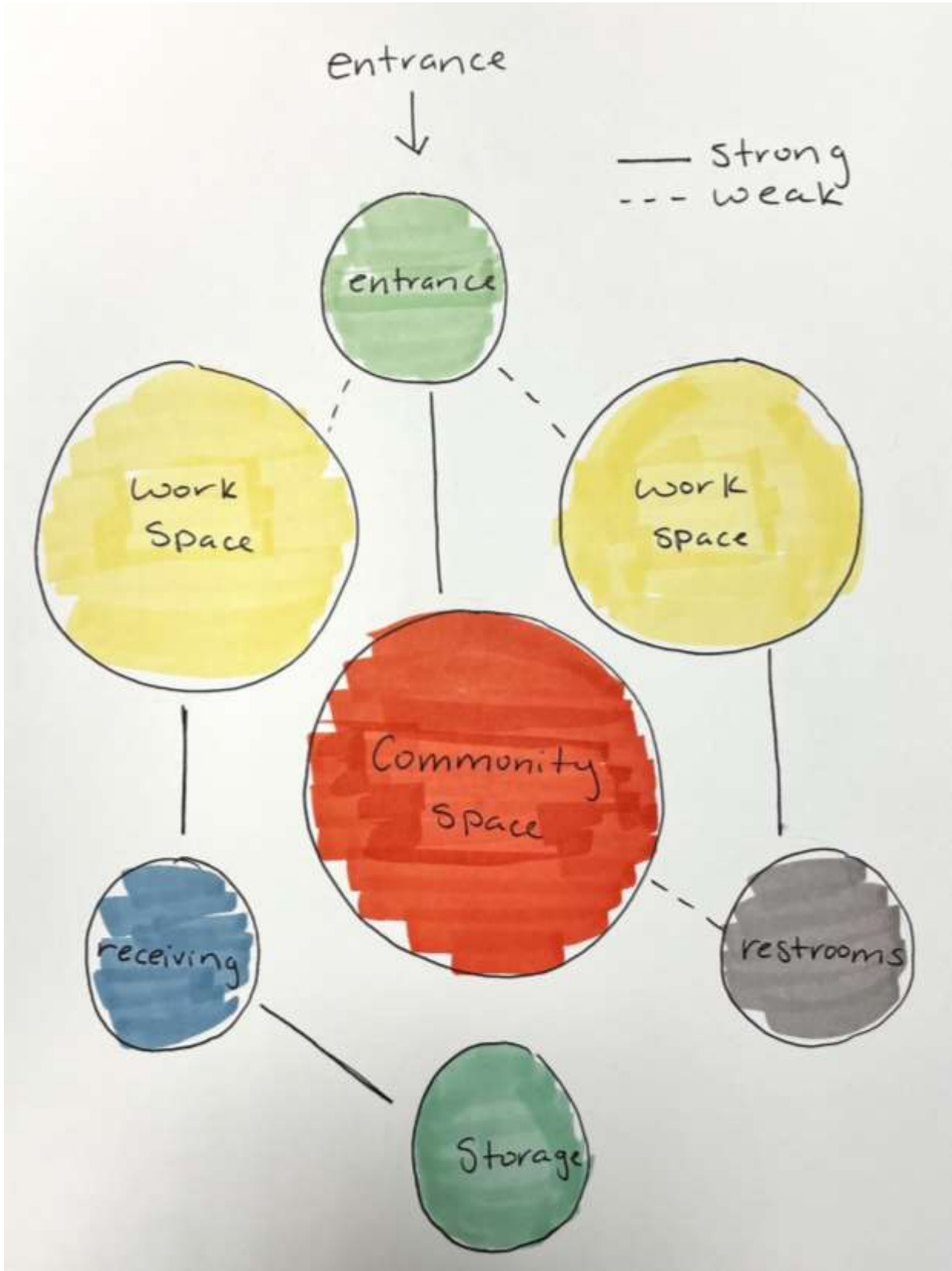
Projection into the space – Anything from floor to 27" high can only protrude 4", anything above 27" – below 80" from the floor can not make the accessible routes less than 36" wide, anything over headroom of 80" can protrude as much as needed

Concept:

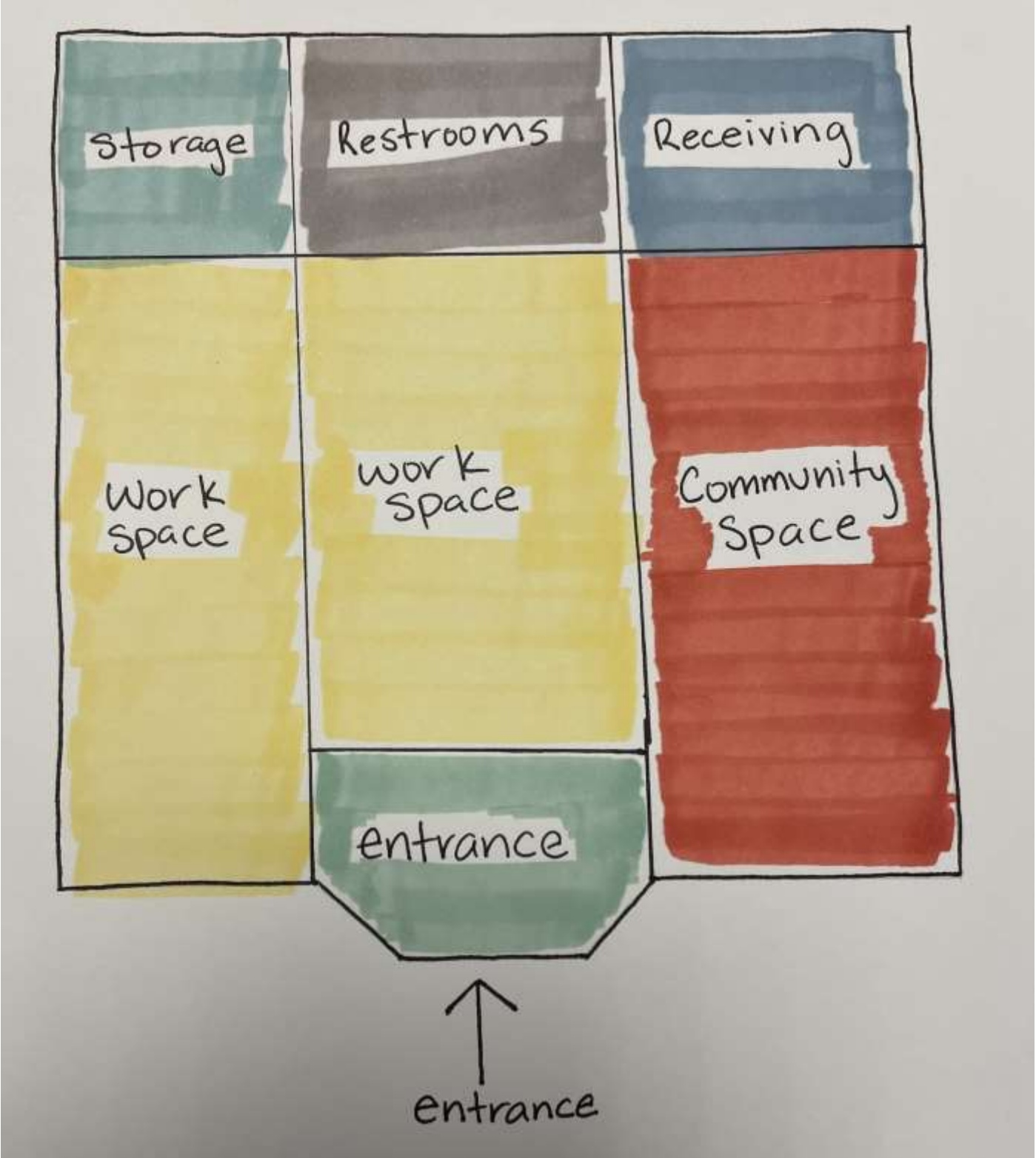
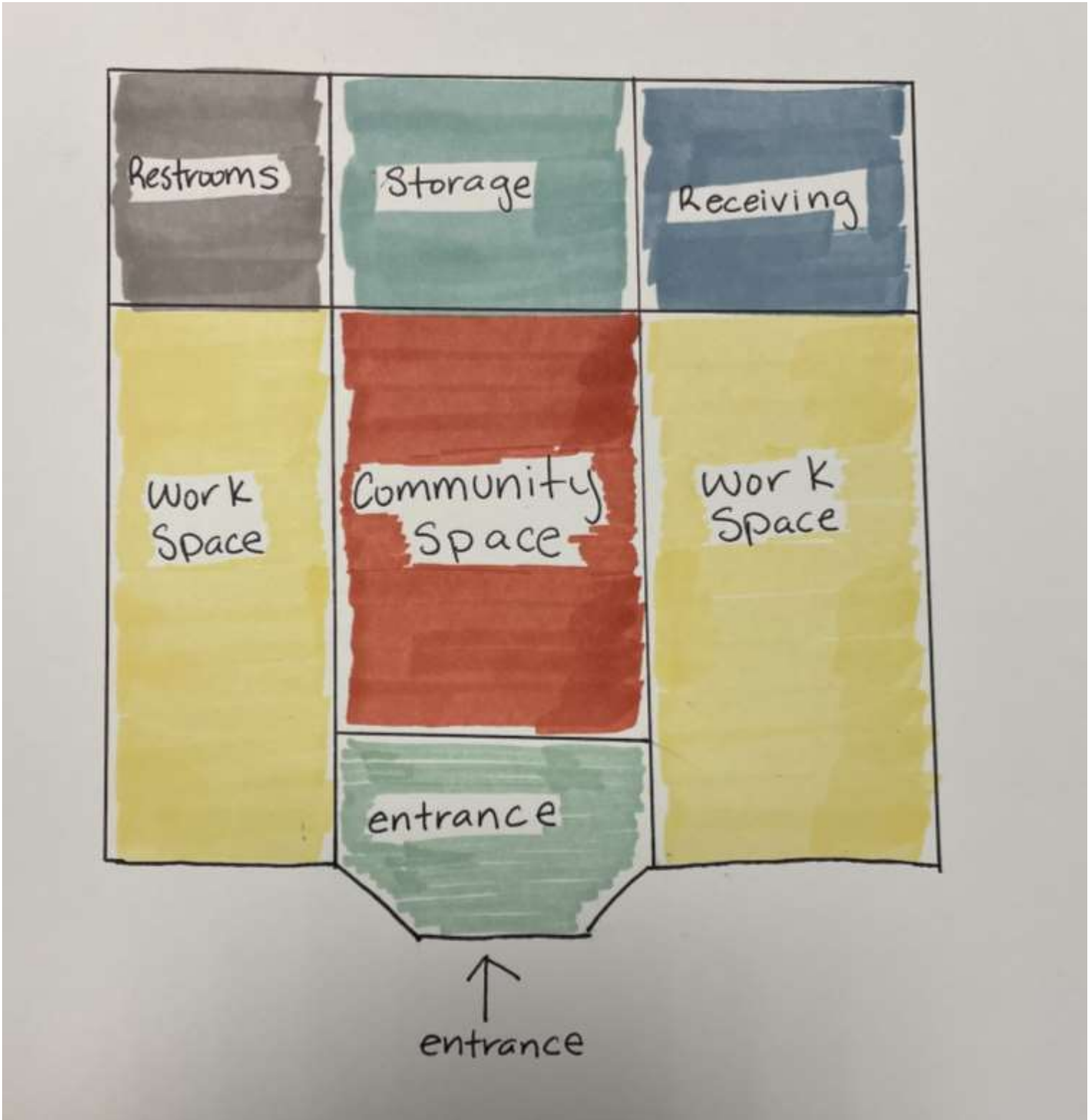
- The design incorporates sleek lines, white, and bright primary colors to create an inviting and creative space.



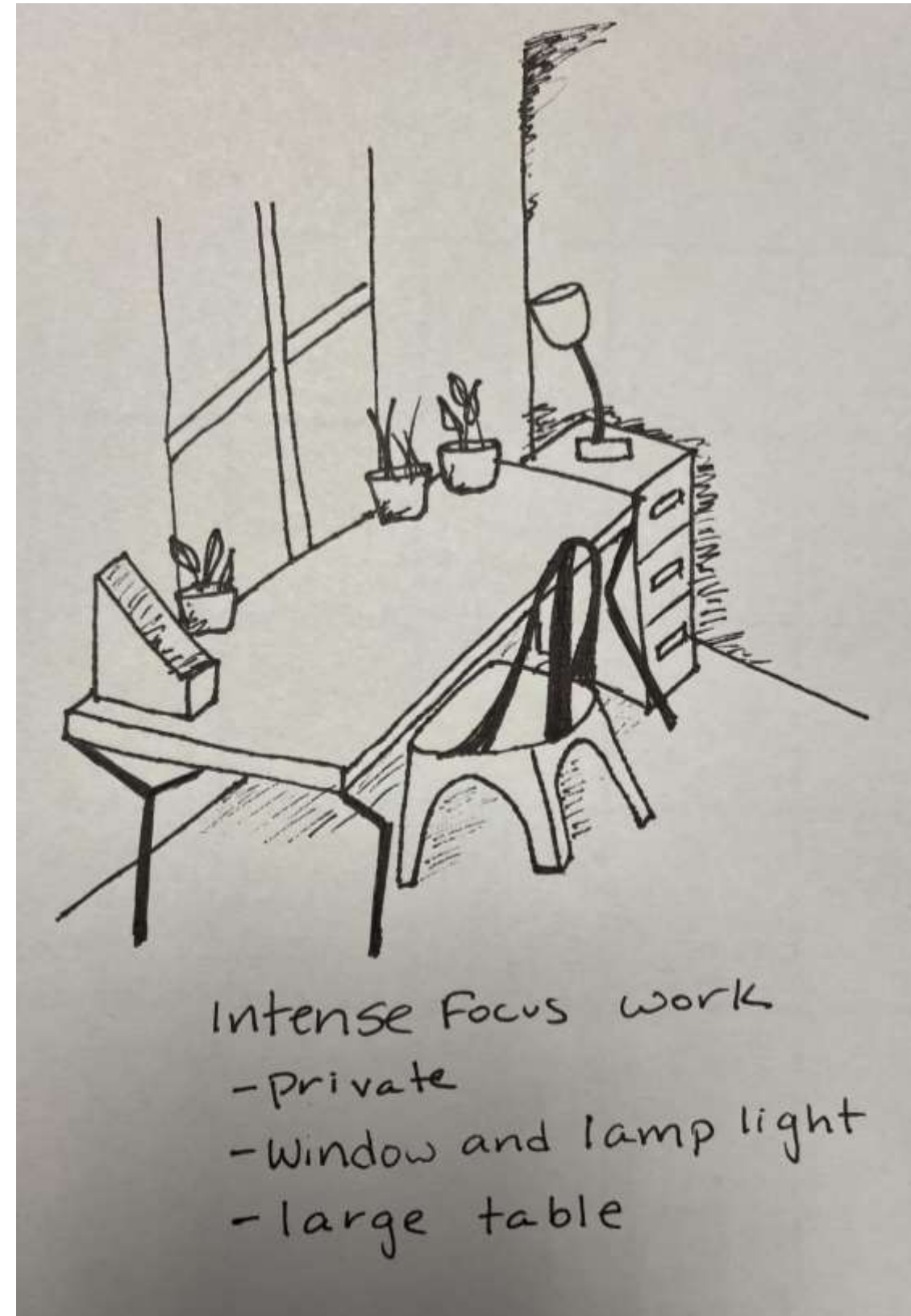
Bubble Diagrams 1&2



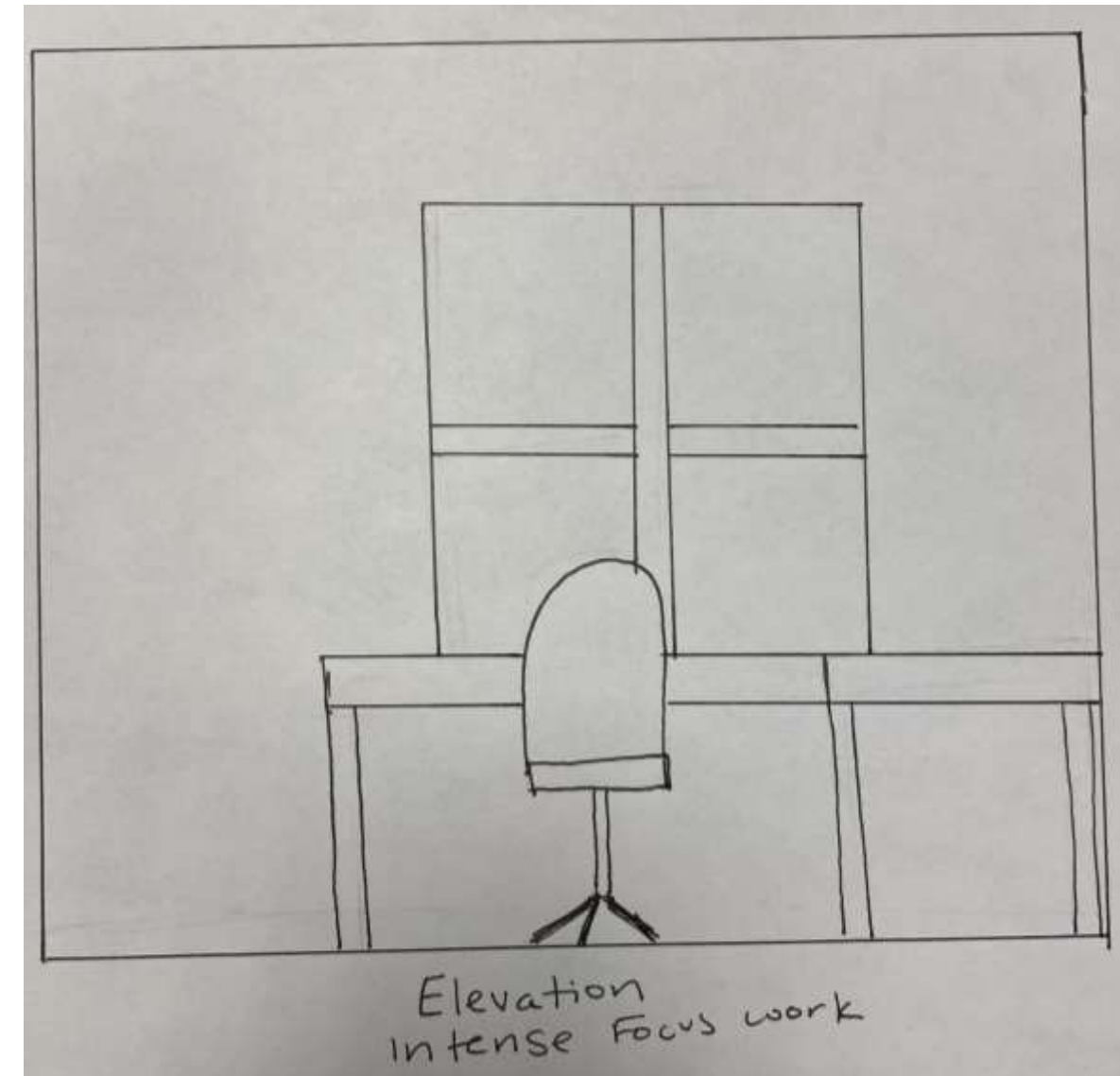
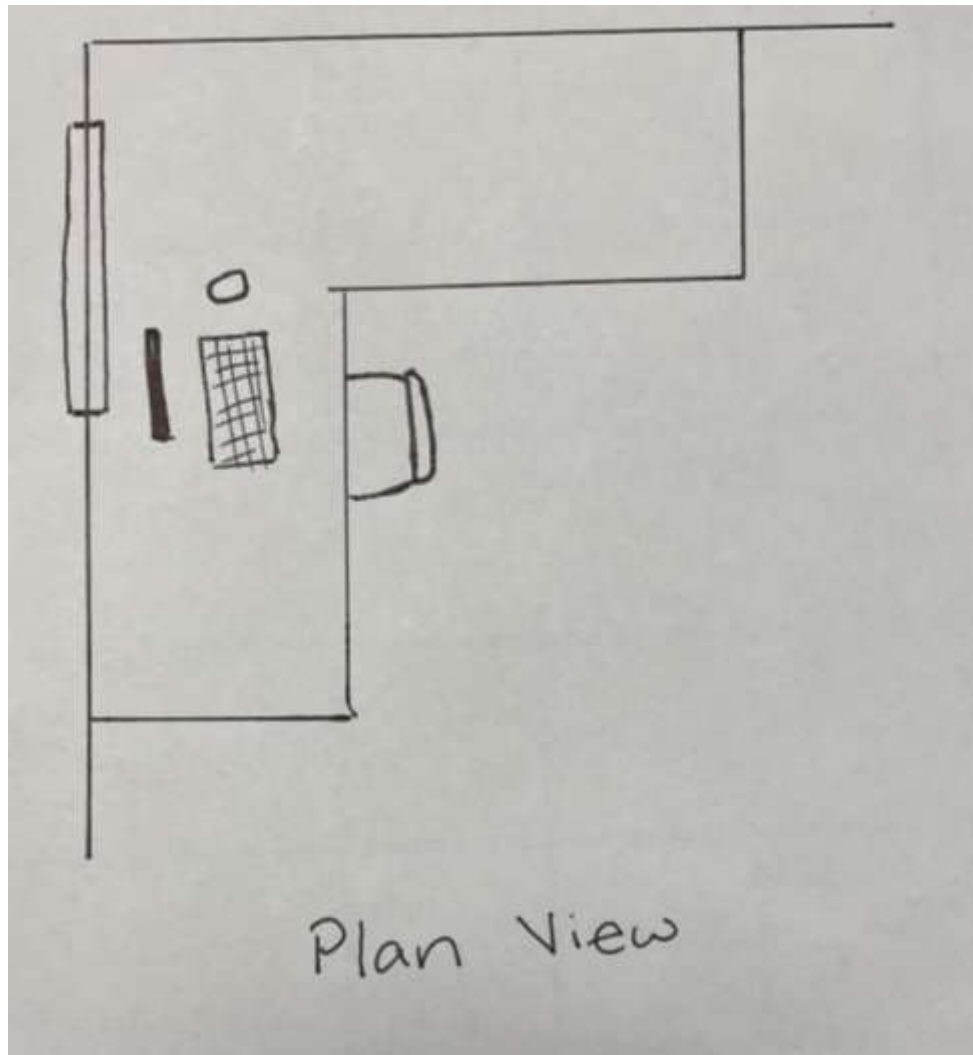
Blocking Diagrams 1&2



Existing Activity Space: Intense Focus Work



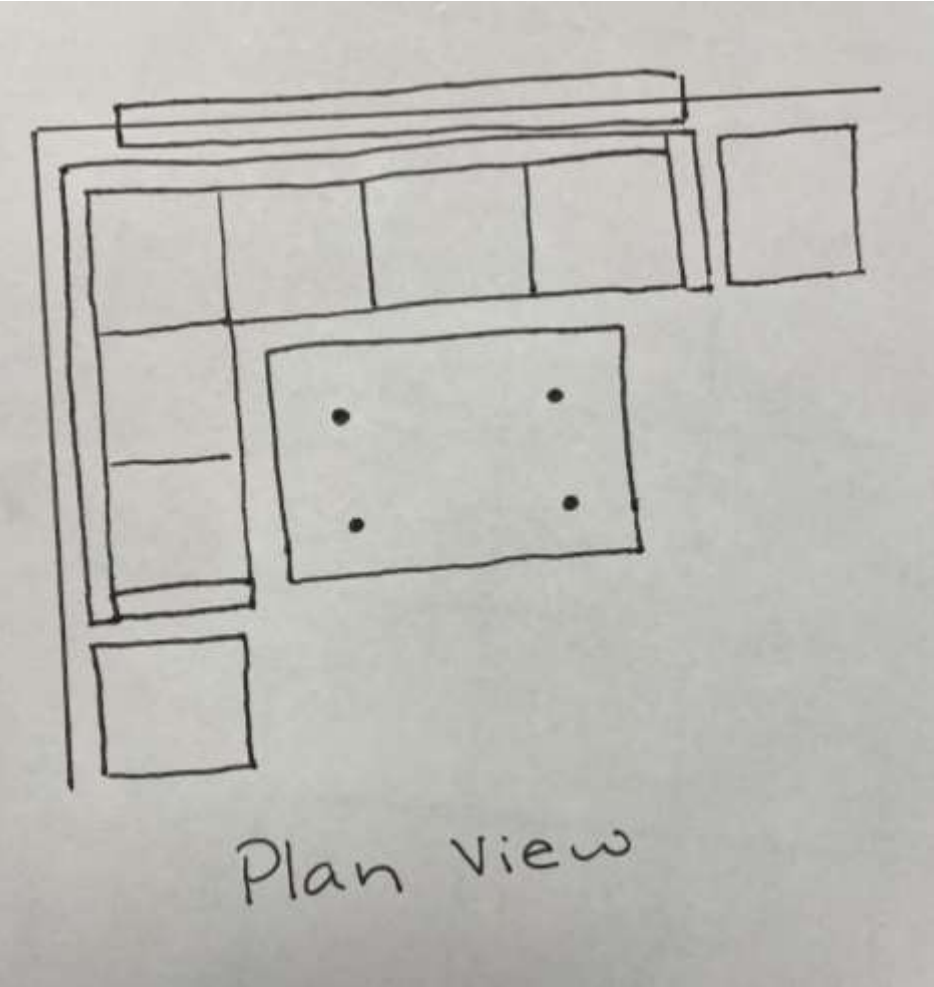
Ideal Activity Space: Intense Focus Work



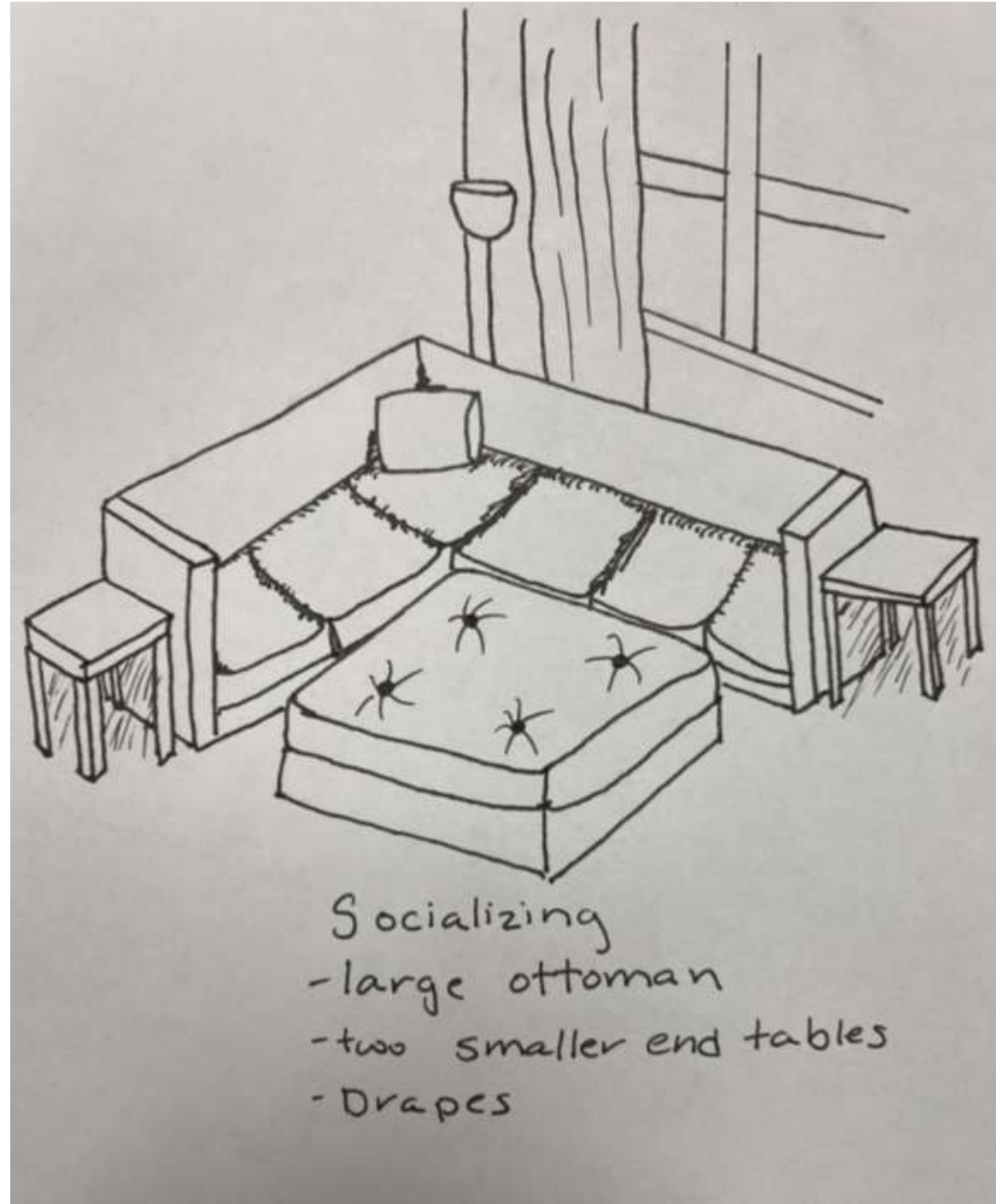
Existing Activity Space: Socializing



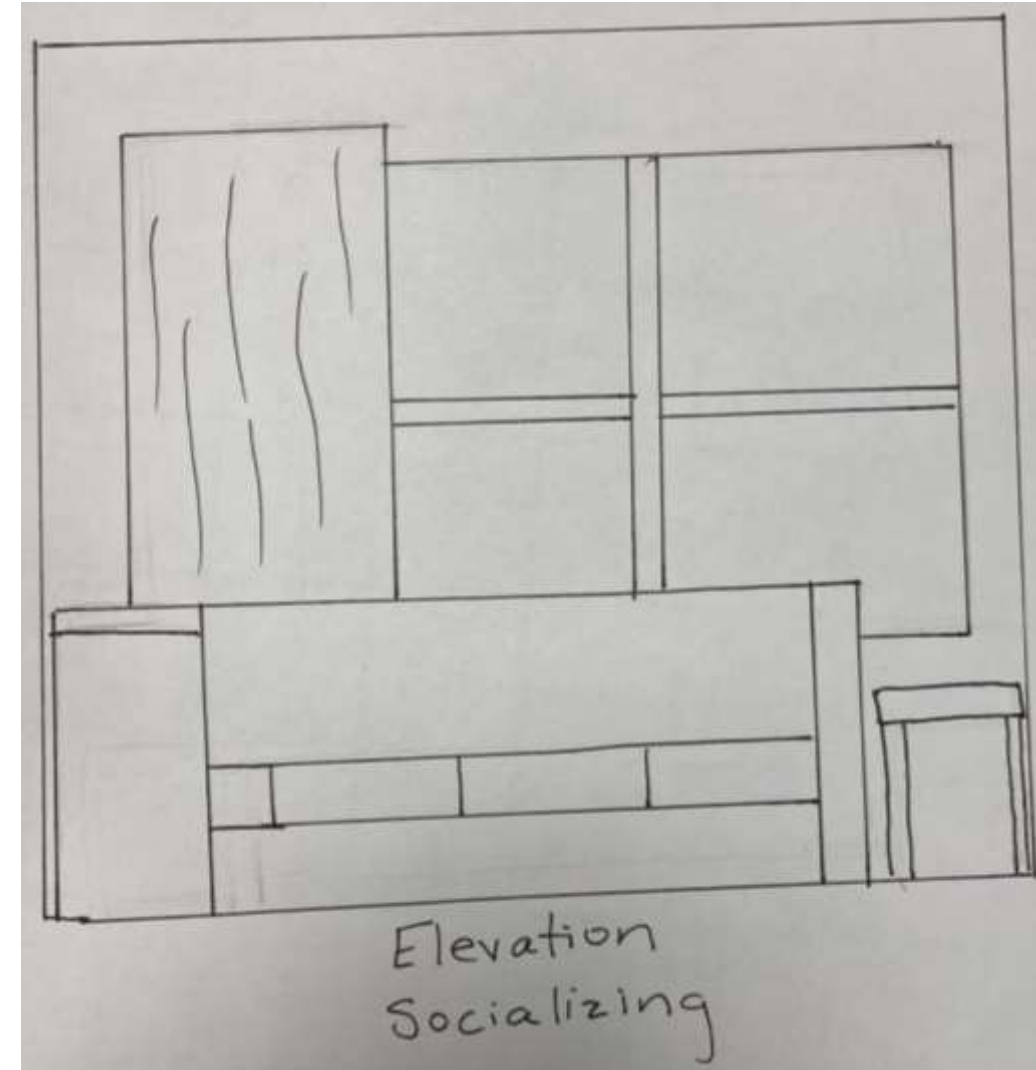
Ideal Activity Space: Socializing



Plan view



Socializing
- large ottoman
- two smaller end tables
- Drapes

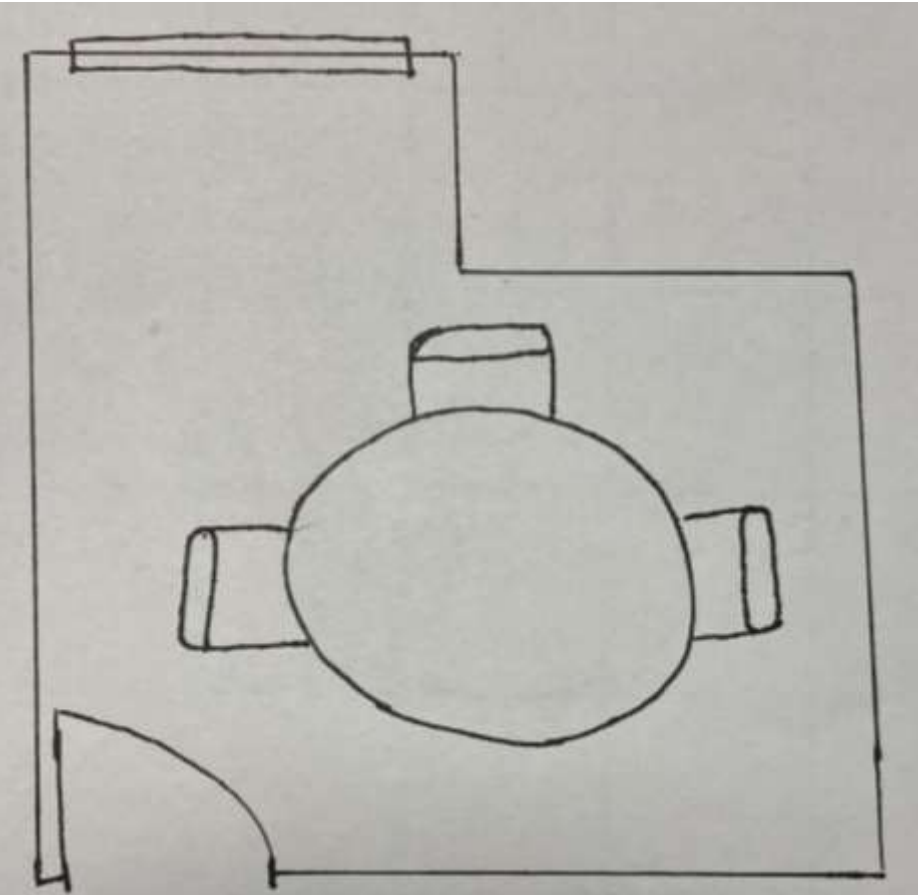


Elevation
Socializing

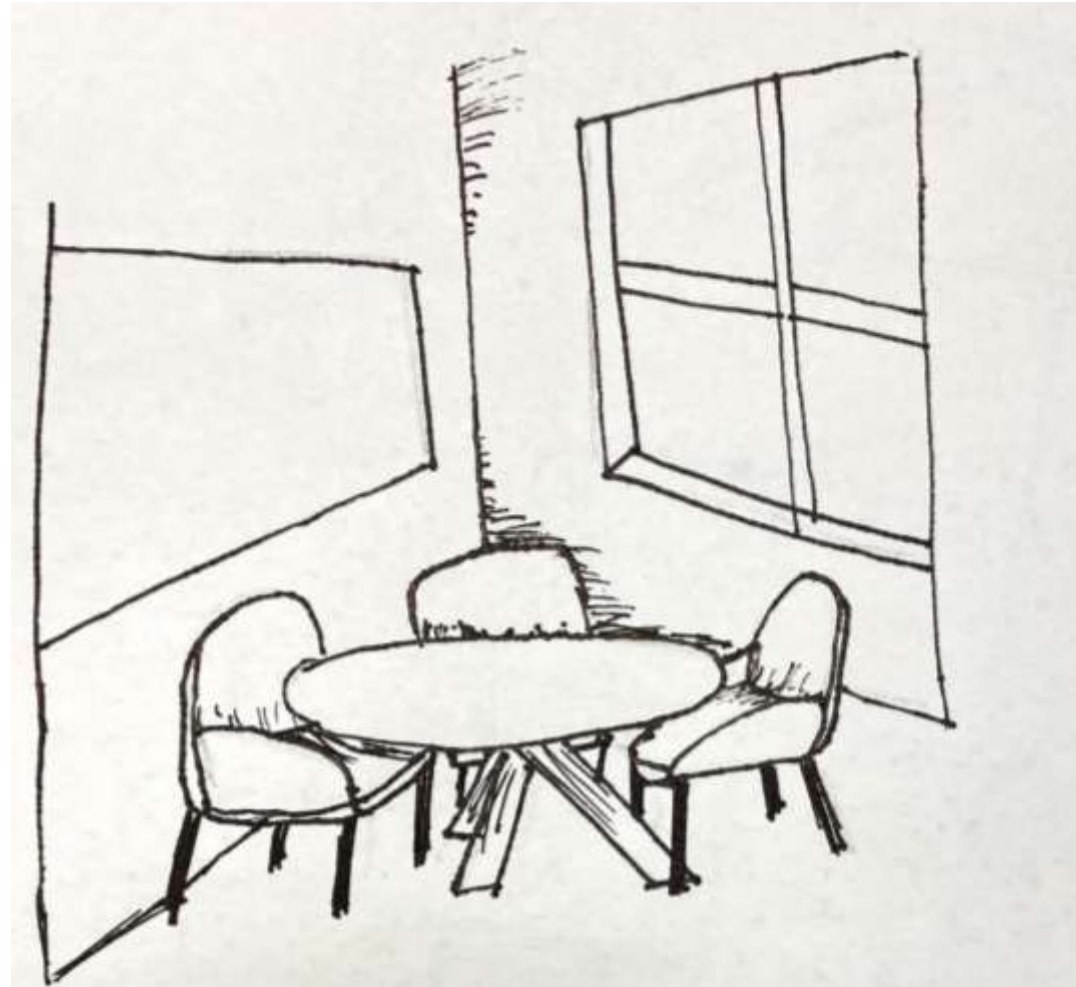
Existing Activity Space: Group Planning/ Meeting



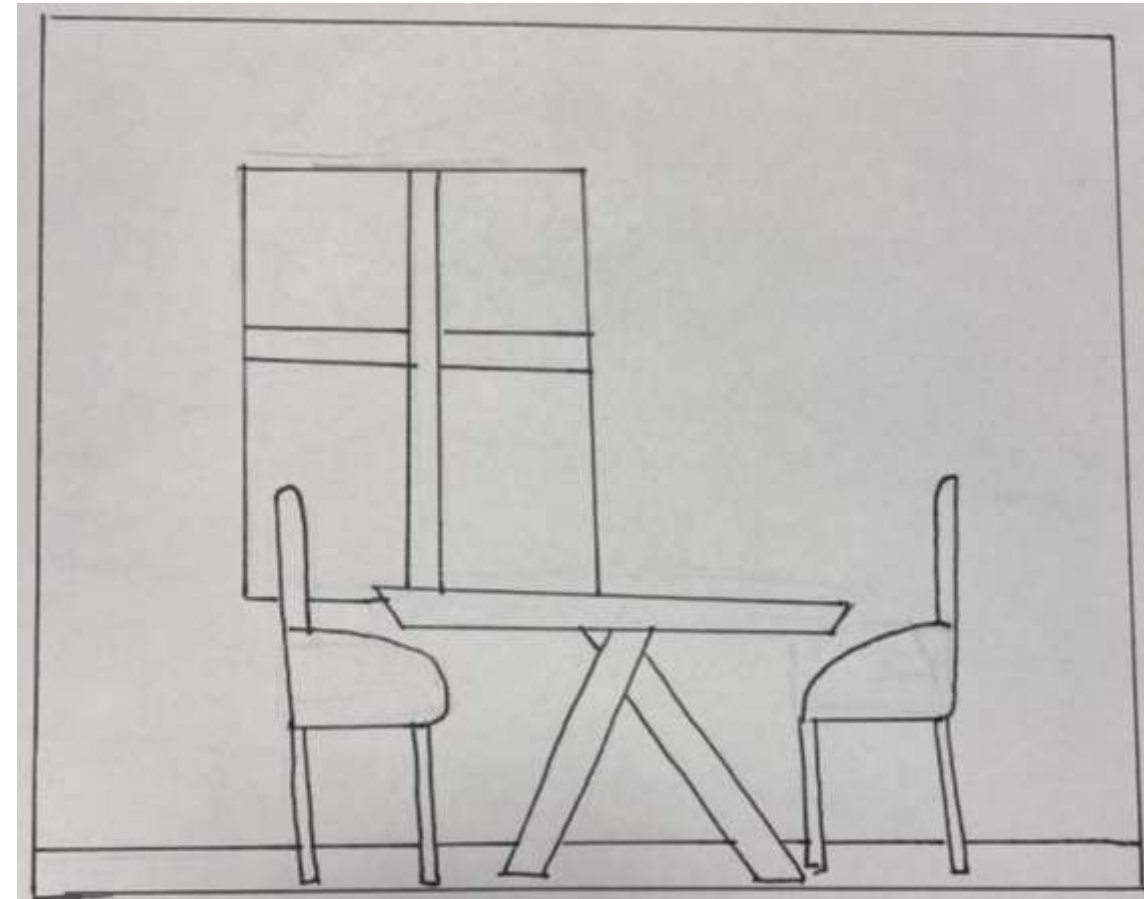
Ideal Activity Space: Group Planning/Meeting



Plan view
Group planning/
meeting



Group planning/
meeting
-larger armchairs
-natural light



Elevation
Group Planning/
meeting