

Cailleigh Kabala

Assignment 1 IDSN Studio

Stakeholder Profile:

- Owner- The owner of the building located at the corner of Cothanche St and 5th St
- The goal is to find a tenant to lease to
- Client- Herman Miller Furniture
- Another goal is to have the people coming into the showroom to buy their pieces
- Users- Clients/Buyers seekers modern furniture for their Space
- Users- Attendees at community events, the people wandering around want to See pieces they want for their own homes and work spaces
- Employees want people to come in, look around for as long as possible and spend money
- CommunitySmith is expecting to see how the showrooms show off the owner ideas and see how clients interact with the space. This space will make the clients feel as if they *need* to buy this furniture.



Site Profile:

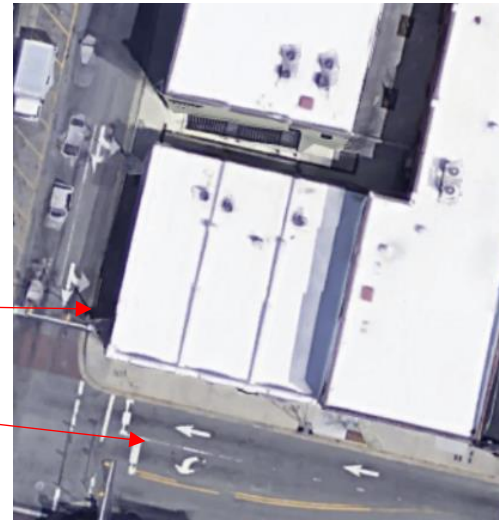
Location- At the corner of Cotanche St and 5th St Suites 201-205

Usable Square Feet- 3,000 +/- square feet

Google Satellite View-

Cotanche St

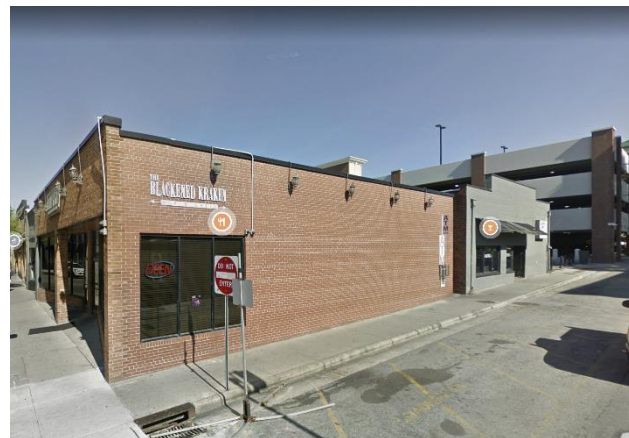
5th St



Here are some views of the neighborhood as seen from each side of the site






The view on the sidewalk facing 5th st



The view on the sidewalk facing Cotonche st

Site Analysis:

- Entrances 
- Usable square footage- 2,905 square ft
- Daylight-
 - Morning 
 - Day/Evening 



Design Problem Statement:

- Figure out how to move light throughout the space since the natural light won't be the main source.
- Walkways to travel between the three spaces.
- Figure out how to organize each section to better show off Herman Millers pieces
- The building needs to be wheelchair accessible
- Show case Herman Millers furniture in a way that will make customers buy and take the time to look at the whole collection



Assignment 2:

Greenville NC history

- Greenville NC was founded in 1771 and was originally named Matrinborough
- During Greenville's early years, the Tar River was a navigable waterway; and by the 1860s there were several established riverboat lines transporting passengers and goods
- Greenville became a major cotton export center. Before the turn of the century, however, tobacco surpassed cotton and became the leading money crop. Greenville became one of the state's leading tobacco marketing and warehouse centers.
- Today, Greenville is a major industrial and economic center for eastern North Carolina— a center for education, industry, medicine, and culture. The city covers over 26.6 square miles and has a population of more than 60,000 (as of the 2000 Census).

Fire and Life Safety codes

SEC. 5-2-33 RESPONSIBILITY FOR ENFORCEMENT; LIFE SAFETY SERVICES DIVISION.

(A) The Fire Prevention Code shall be enforced by the Life Safety Services Division of the Fire Rescue Department of the city, which shall be operated under the supervision of the Fire Chief.

(B) The Life Safety Services Battalion Chief, the person in charge of the Life Safety Services Division, shall be assigned by the Chief of the Fire Department and shall serve at the pleasure of the Fire Chief.

(C) The Chief of the Fire Rescue Department may designate such members of the Fire Rescue Department as Fire Marshal or Deputy Fire Marshal as he or she may determine necessary.

(Ord. No. 98-22, § 1, passed 2-12-1998)

Local Preservation Codes and Credits

- Along with the College View Historic District, there are 27 Local Landmarks, which are individually designated because of their significance in terms of history, prehistory, cultural importance, and architecture.
- Along with being a National Register Historic District, the College View Historic District is also a Local Historic District. Adjacent to the campus of East Carolina University, the College View Historic District consists of one of Greenville's largest and most intact early twentieth century residential areas, with numerous fine examples of Craftsman, Spanish Colonial Revival, Spanish Eclectic, Colonial Revival, Italian Renaissance Revival, and Tudor Revival style houses.

Assignment 3:

- Biophilic design is a concept used within the building

industry to increase occupant connectivity to the natural environment through the use of direct nature, indirect nature, and space and place conditions



Work cited:

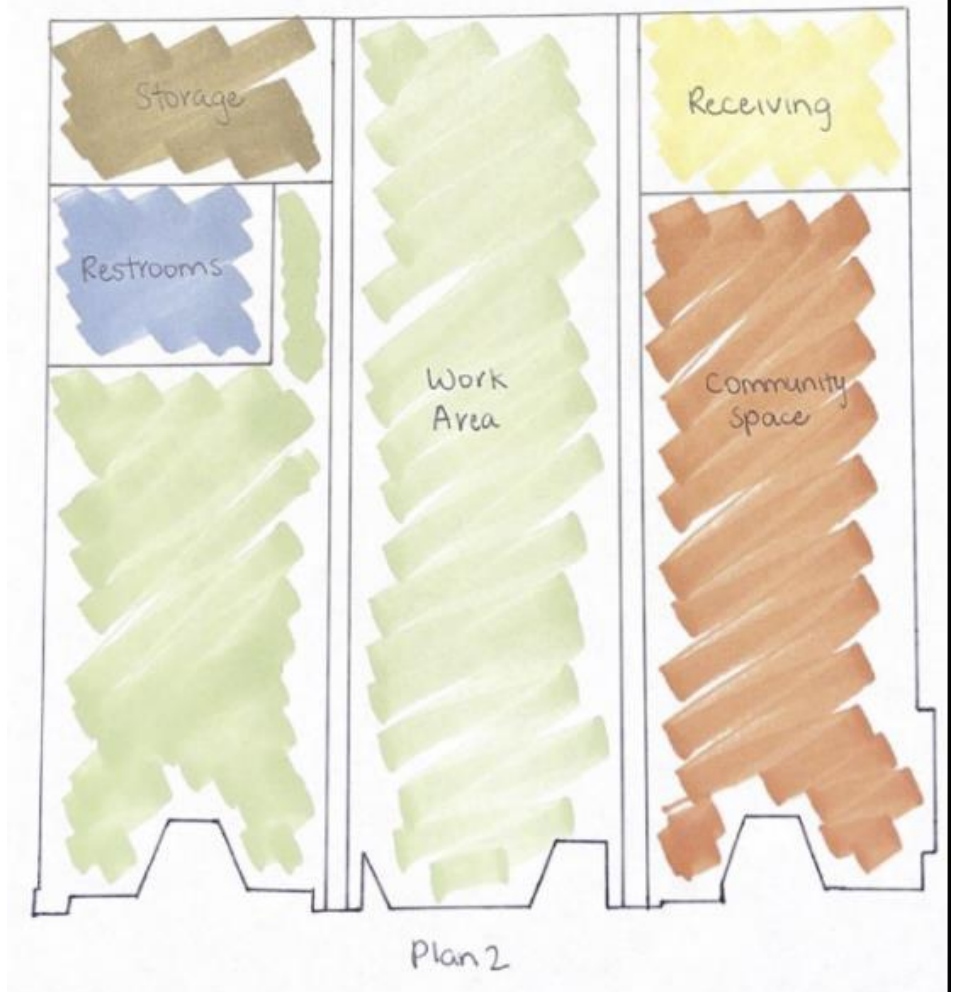
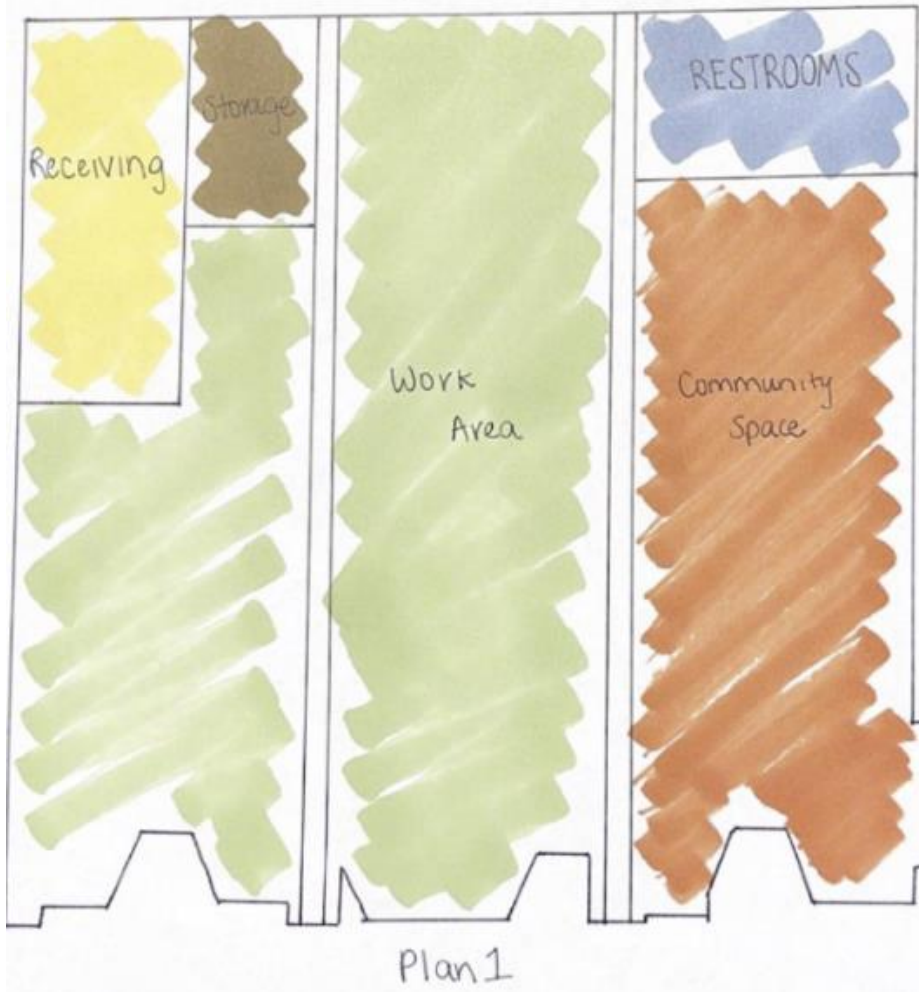
https://store.hermanmiller.com/furniture-shelving-storage?lang=en_US

<https://www.greenvillenc.gov/government/planning-and-development-services/historic-preservation/historic-preservation-frequently-asked-questions>

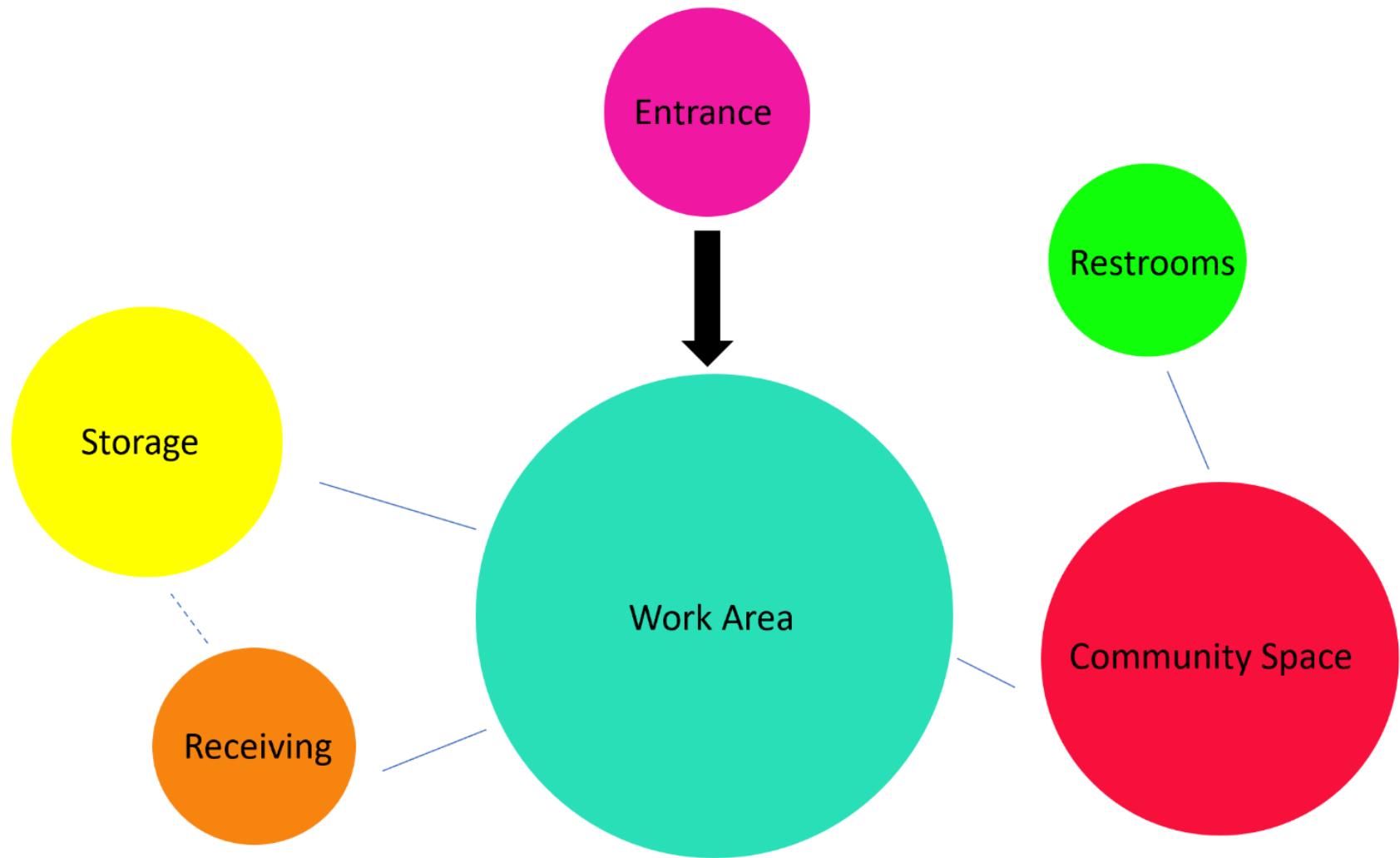
<https://www.greenvillenc.gov/government/fire-rescue/fire-inspections-cause-investigations-and-permits>

https://www.carolana.com/NC/Towns/Greenville_NC.html#:~:text=Greenville%2C%20North%20Carolina%20was%20founded%20in%201771%20as,on%20the%20south%20bank%20of%20the%20Tar%20River%2C

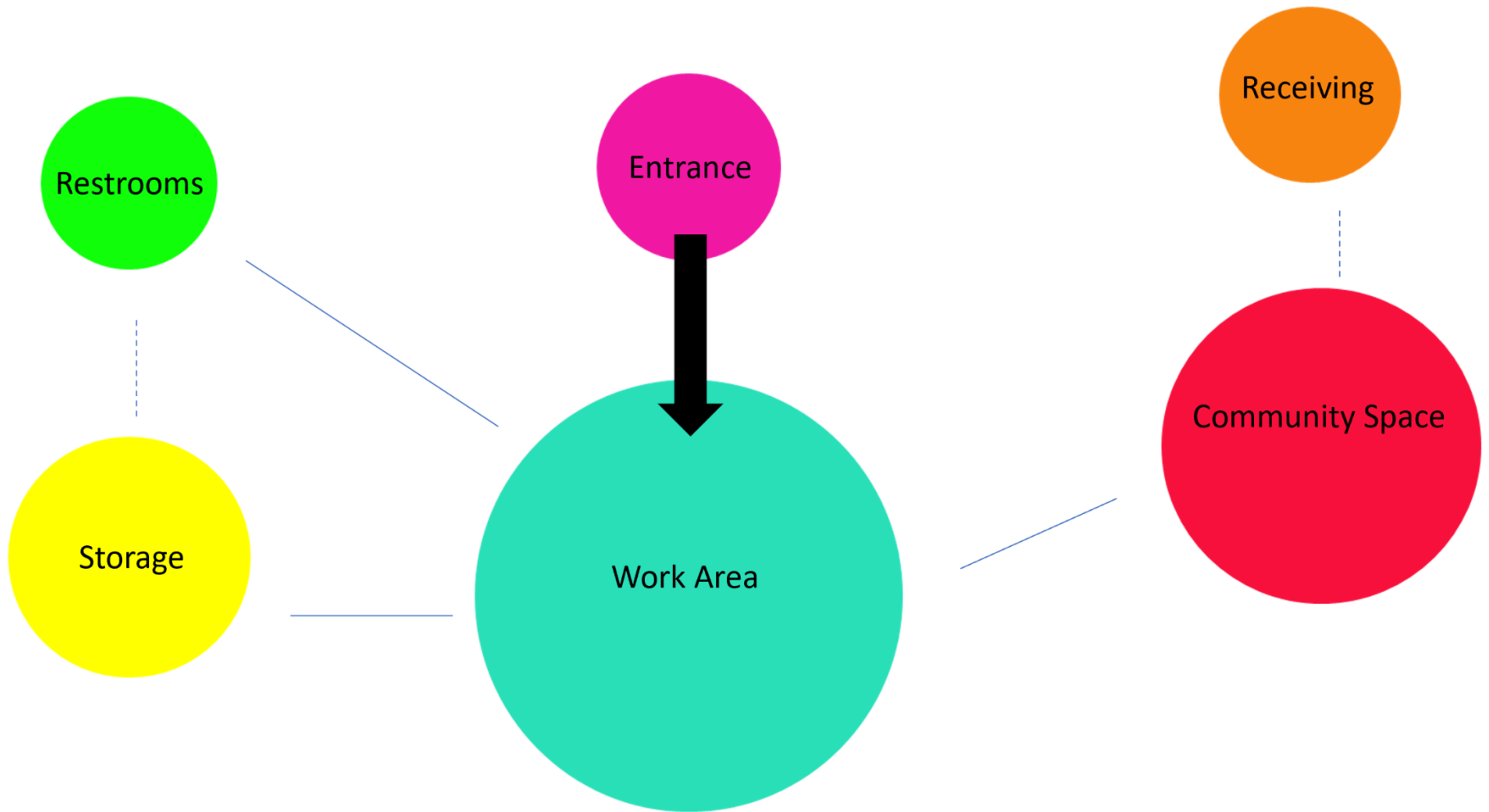
Assignment 4:



Assignment 4: Bubble Diagram 1



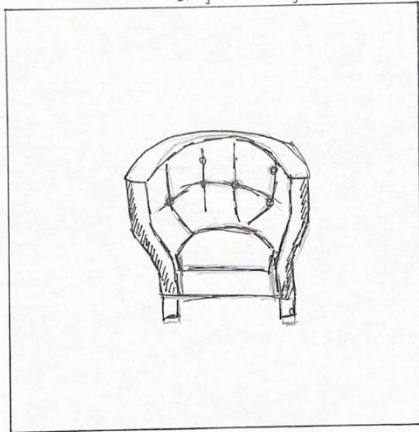
Assignment 4: Bubble Diagram 2



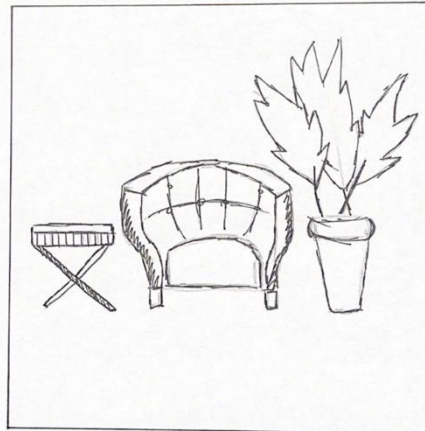
Assignment 5 Daydreaming



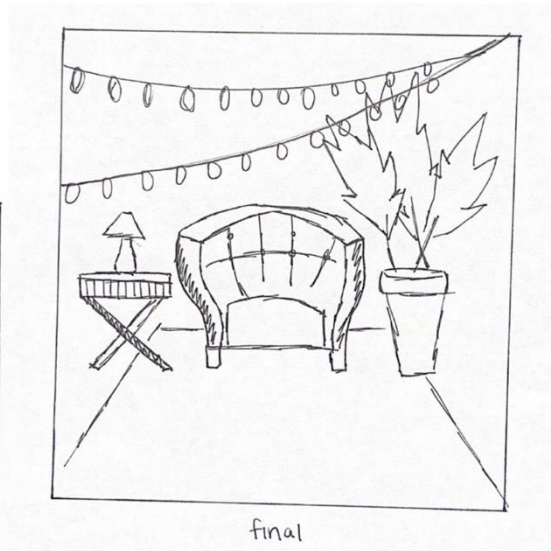
daydreaming



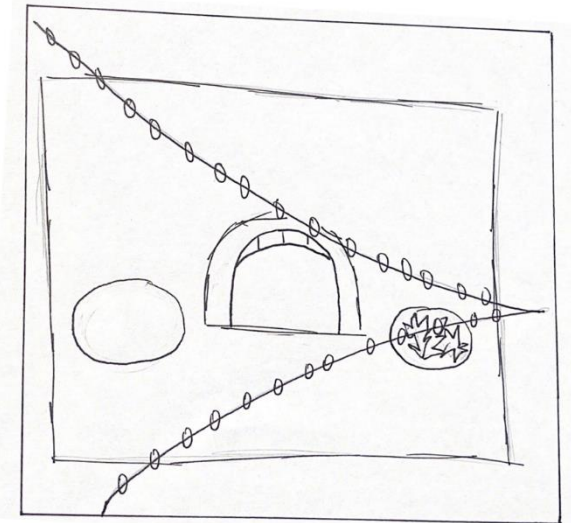
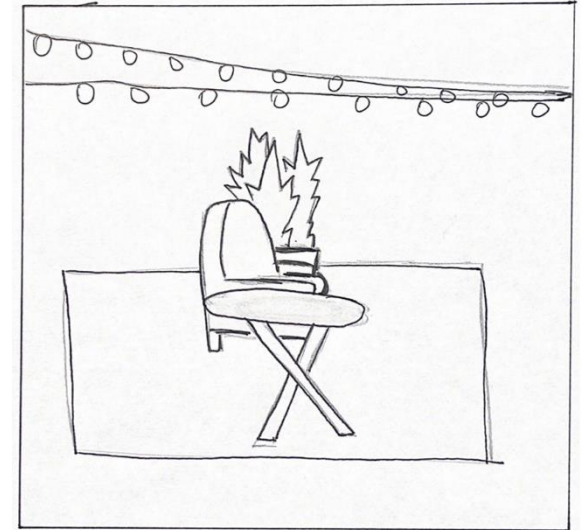
original



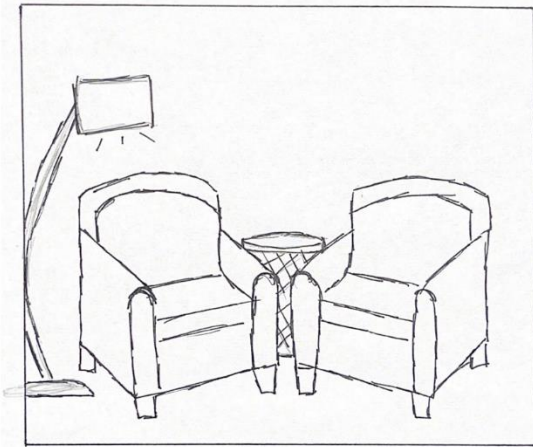
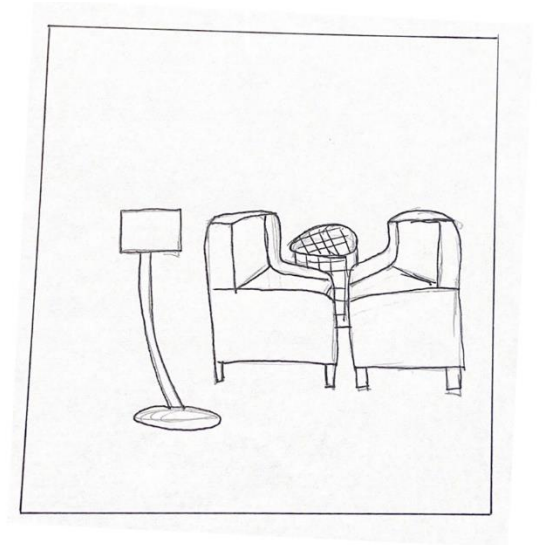
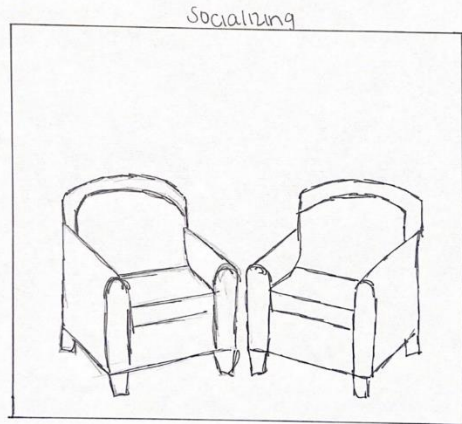
second



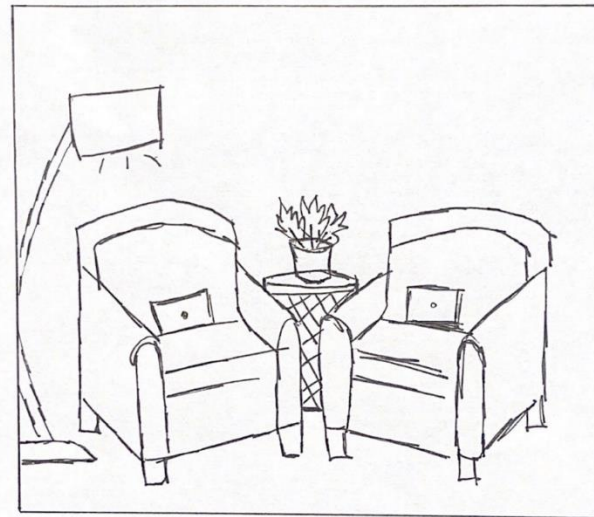
final



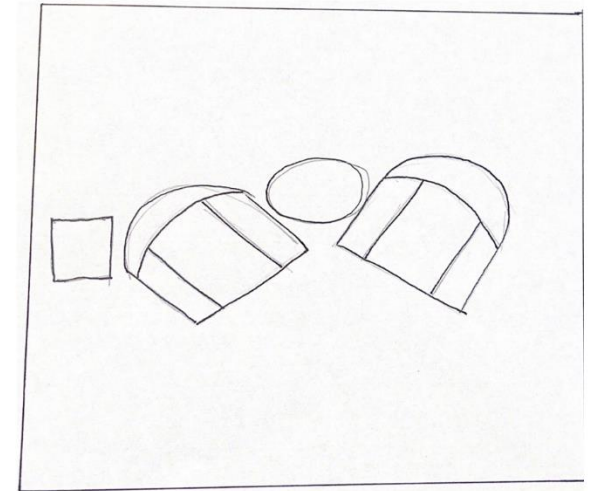
Socializing



Second

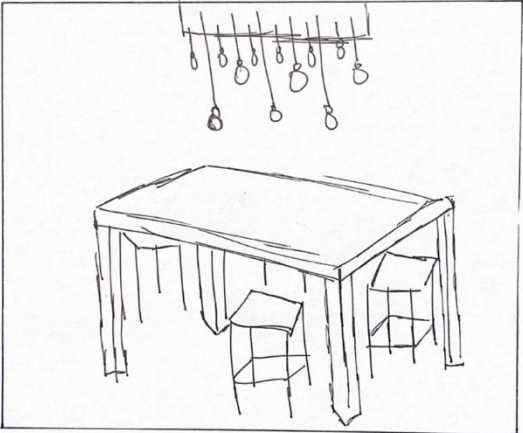
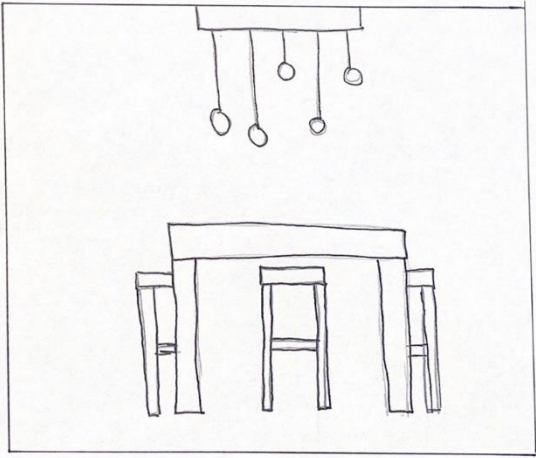
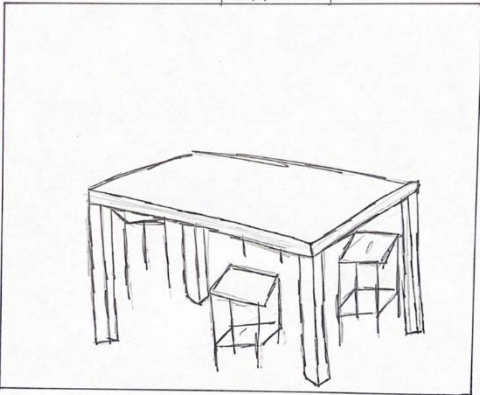


final

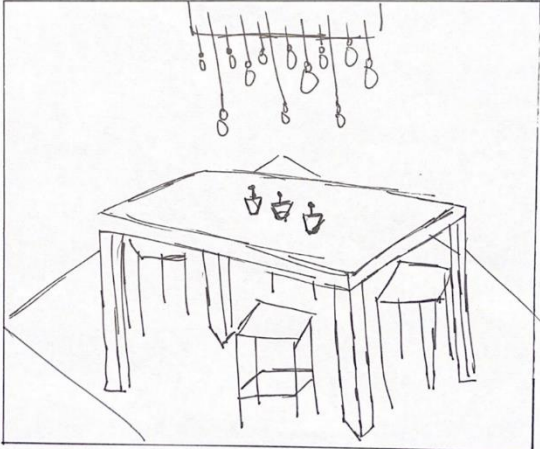


Group Planning/ Meeting

group planning



second



final

