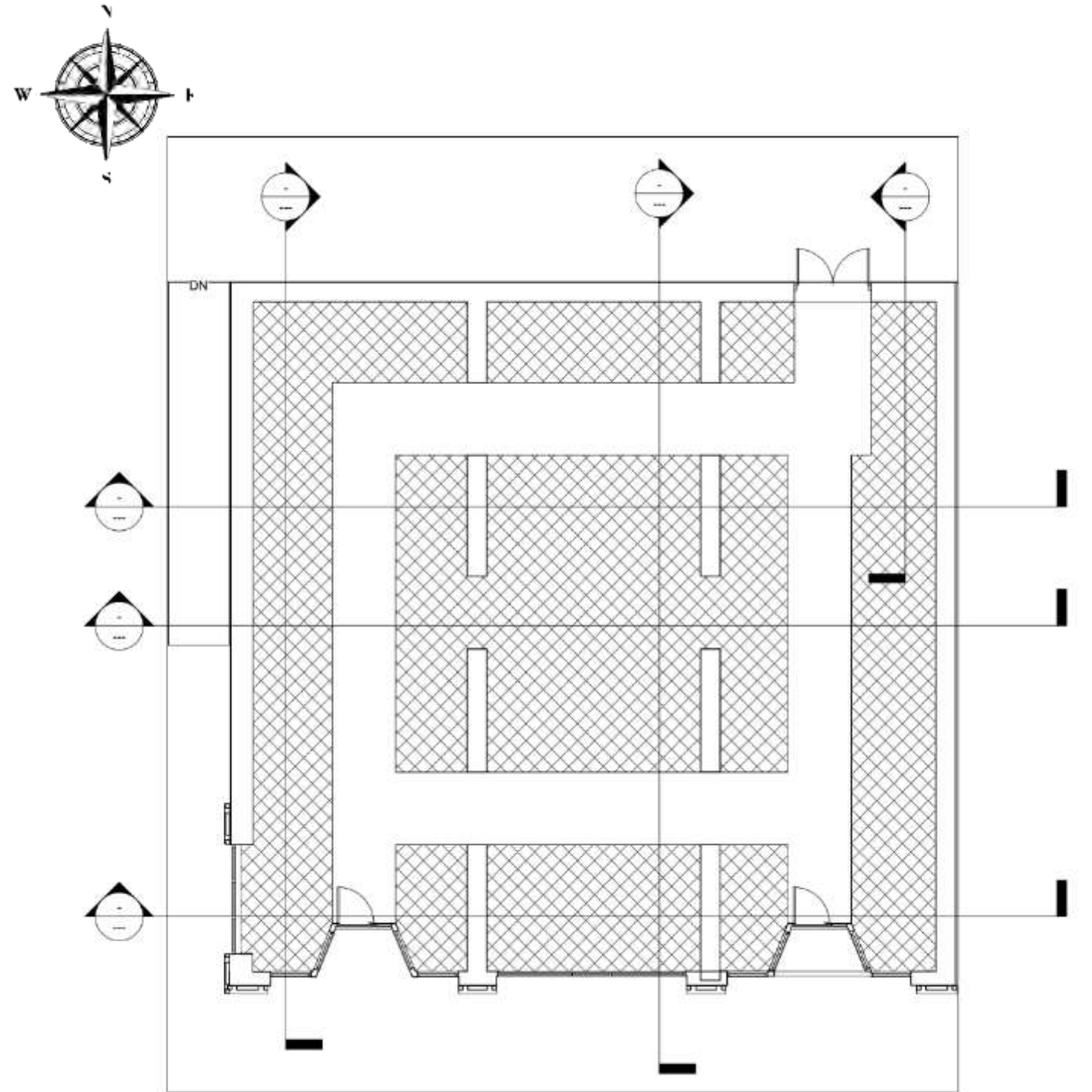
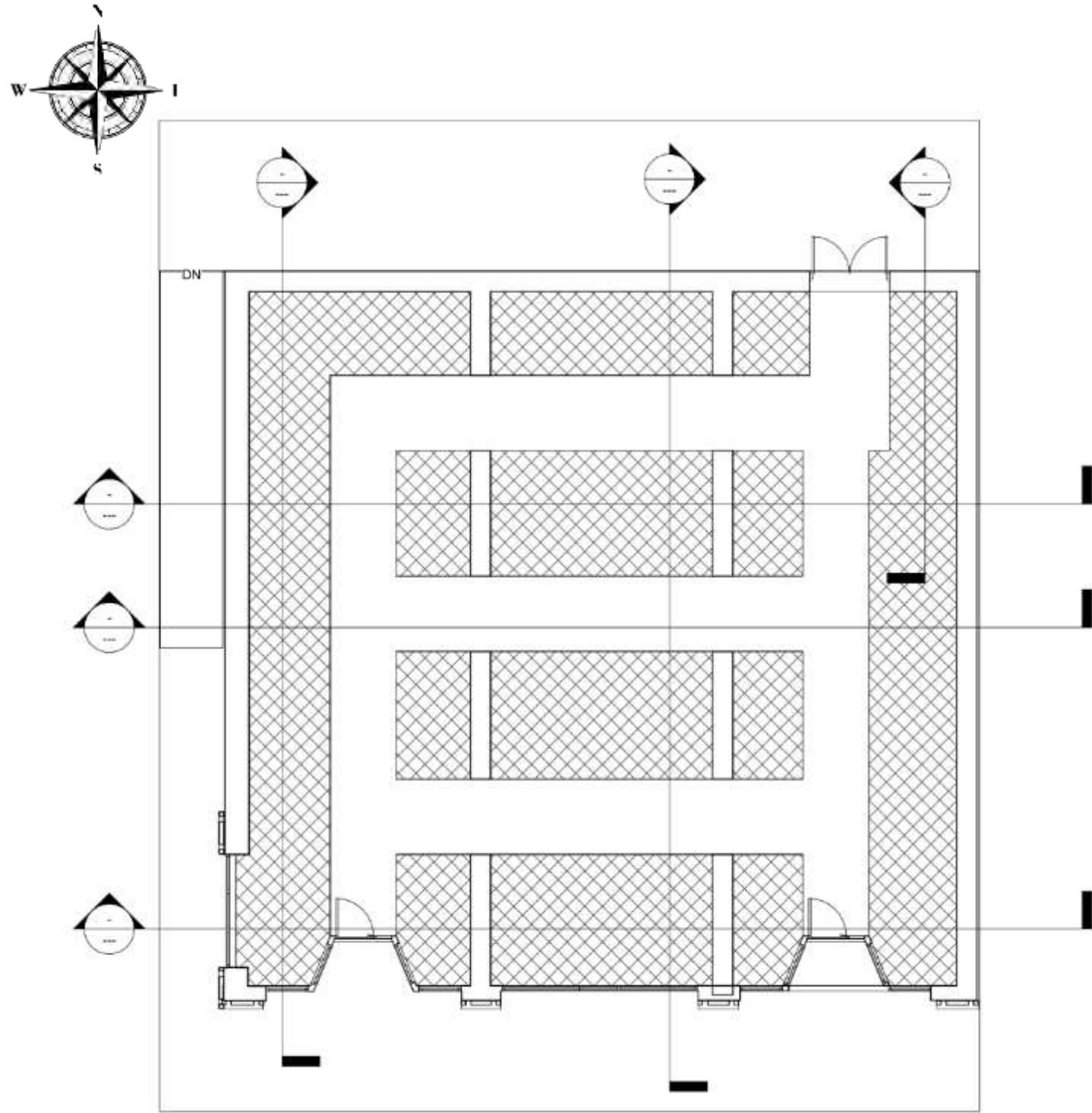


IDSN 3102

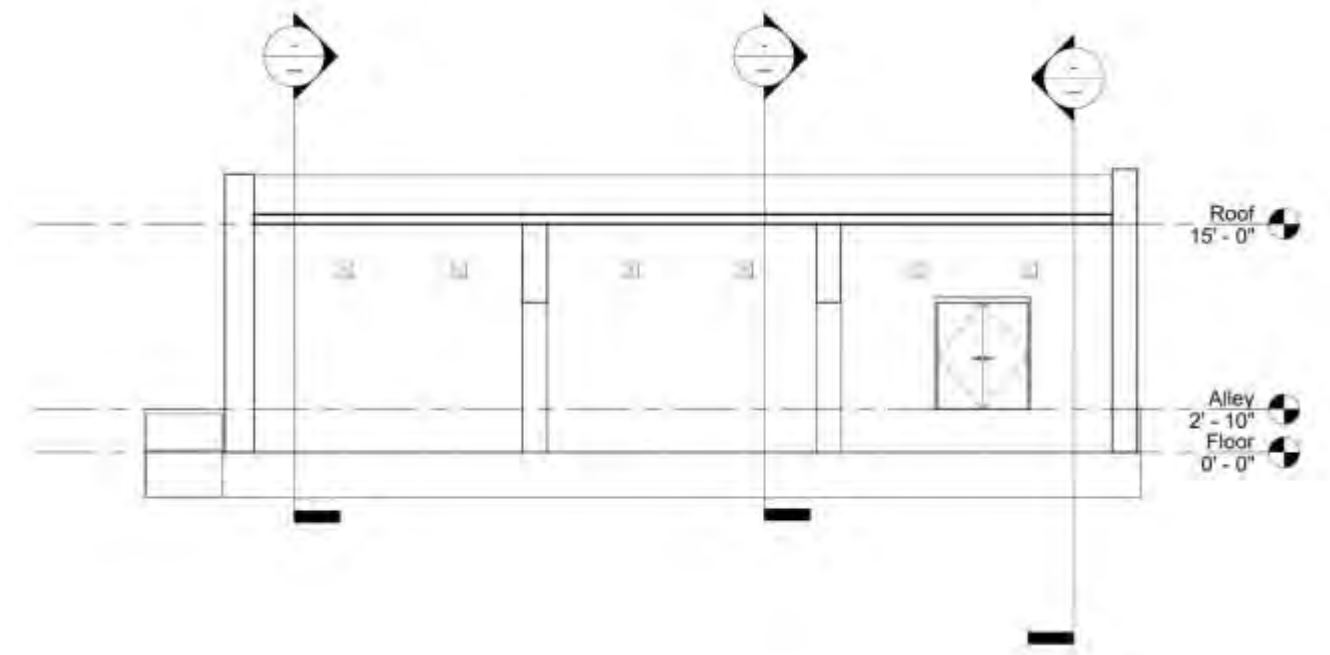
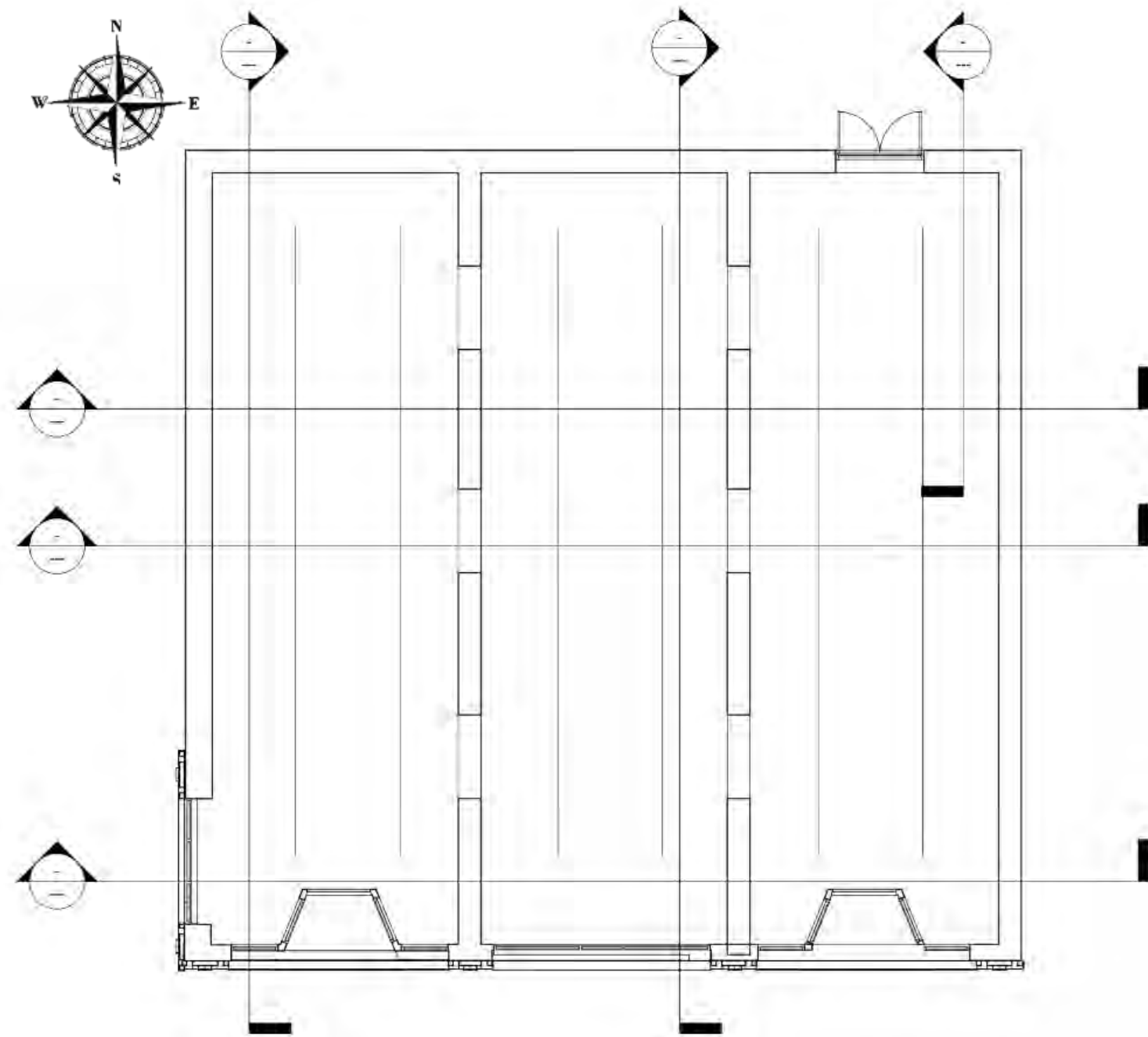
# PORTFOLIO 2

By: Cory Krajewski

# Assignment 6: Circulation Plans



# Assignment 7: Ductwork Locations



# Assignment 8: Space Plan Sketches



COTANCHE STREET



201 E. 5TH

203 E. 5TH

205 E. 5TH

EAST 5TH STREET



COTANCHE STREET



201 E. 5TH

203 E. 5TH

205 E. 5TH

EAST 5TH STREET



COTANCHE STREET



201 E. 5TH

203 E. 5TH

205 E. 5TH

EAST 5TH STREET



COTANCHE STREET



201 E. 5TH

203 E. 5TH

205 E. 5TH

EAST 5TH STREET



COTANCHE STREET



201 E. 5TH

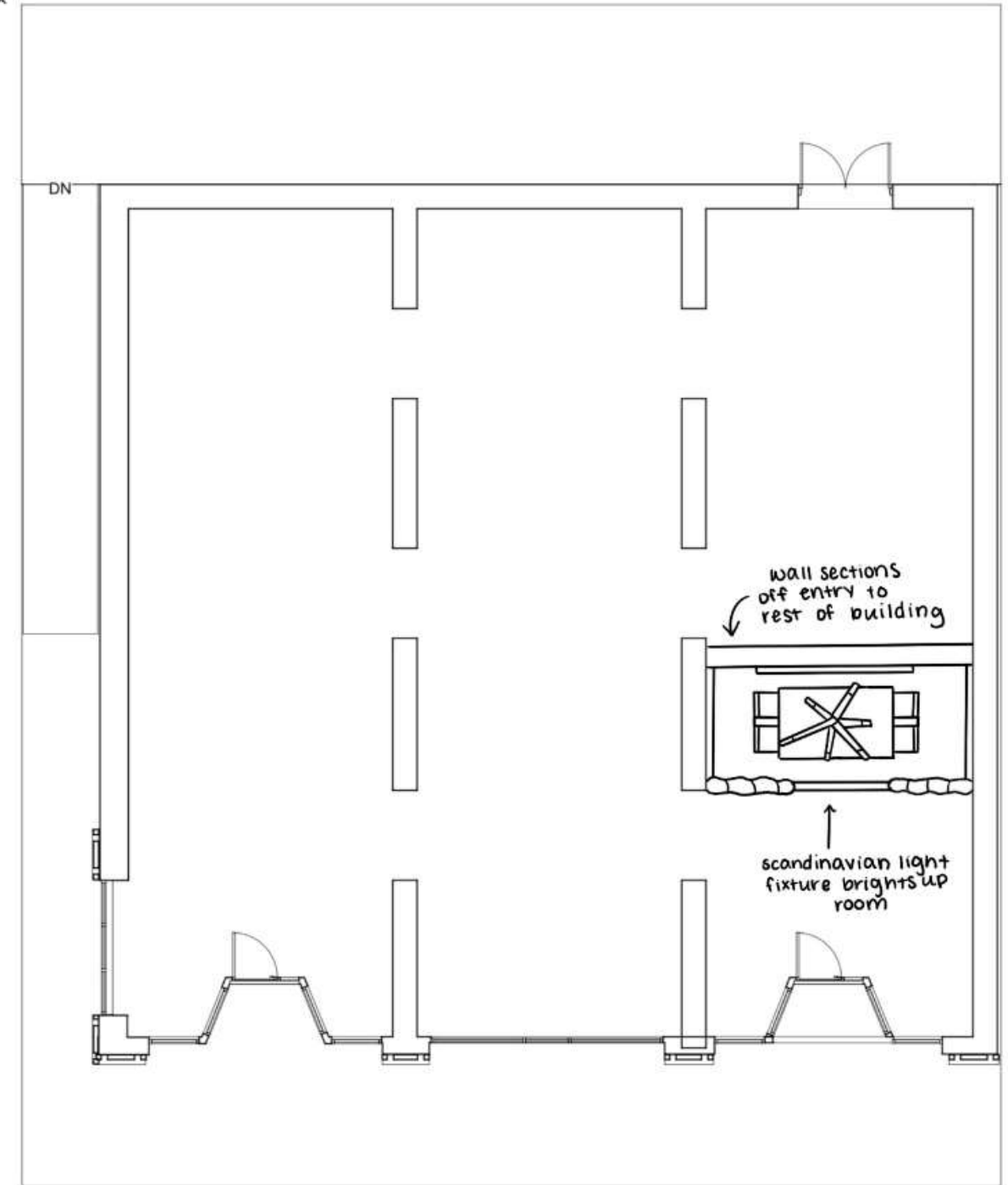
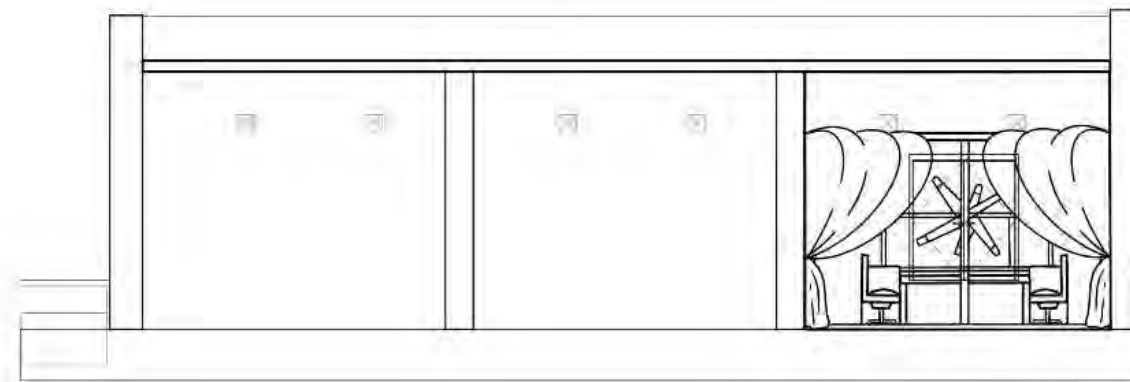
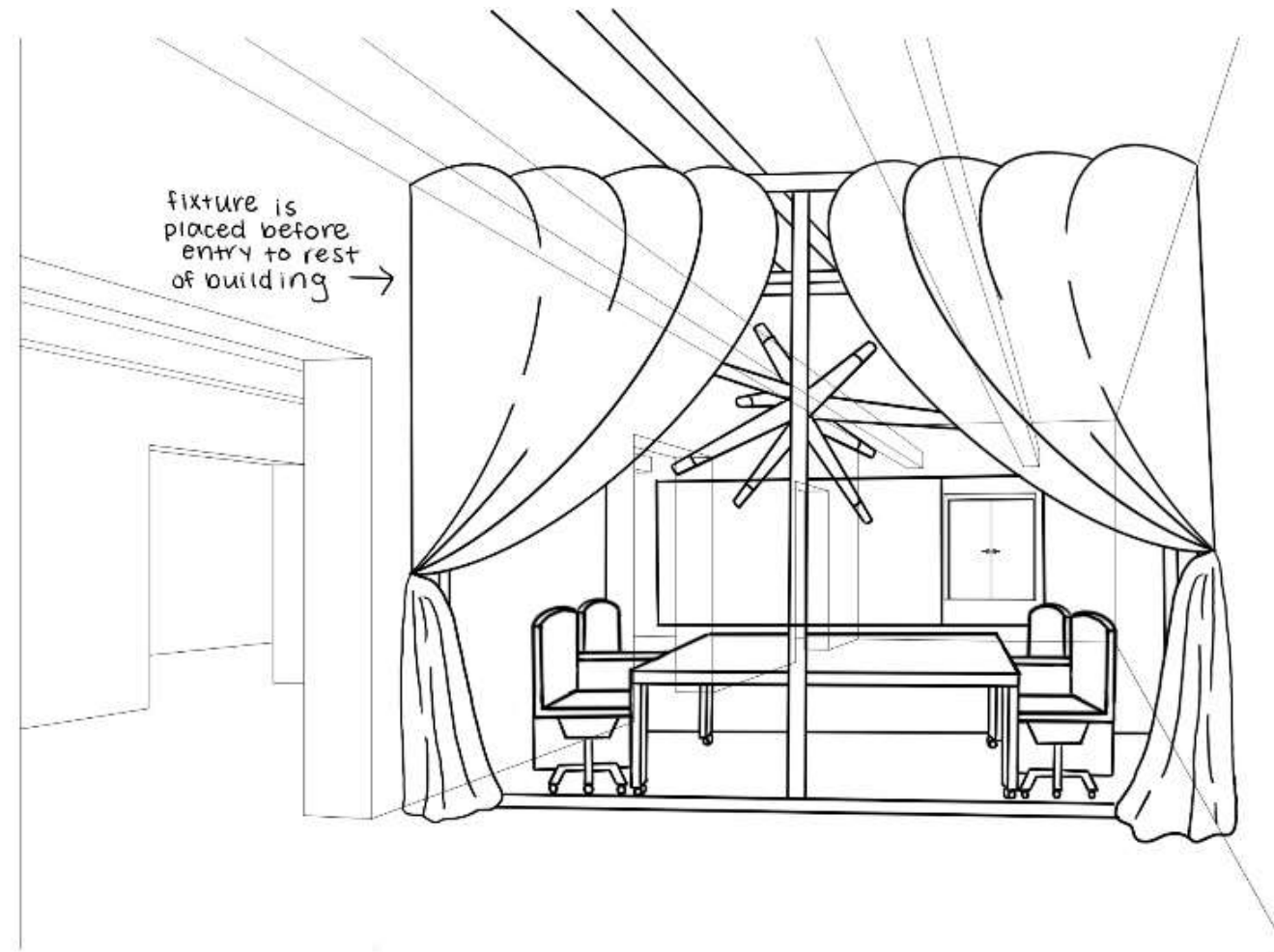
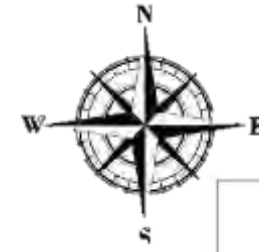
203 E. 5TH

205 E. 5TH

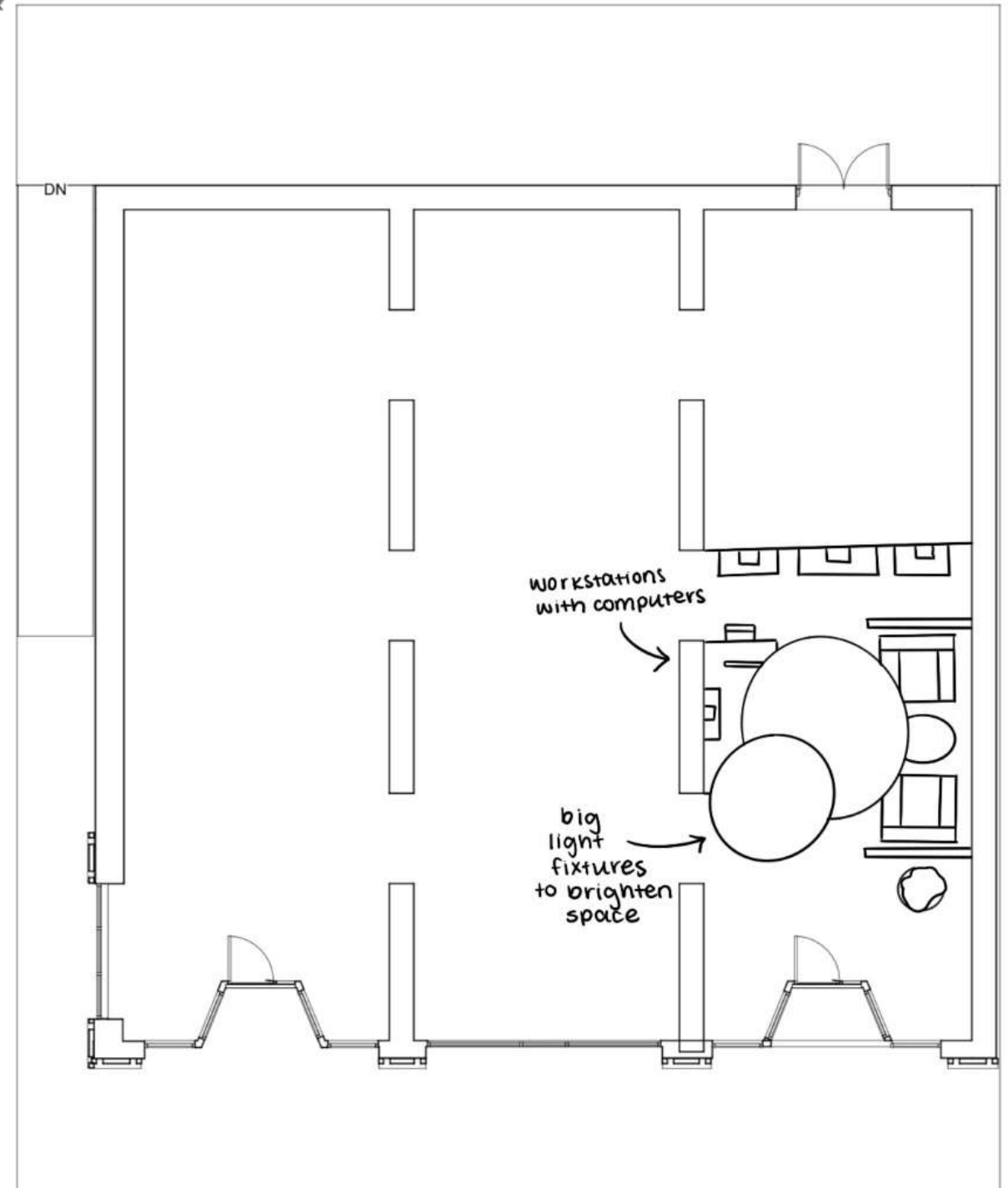
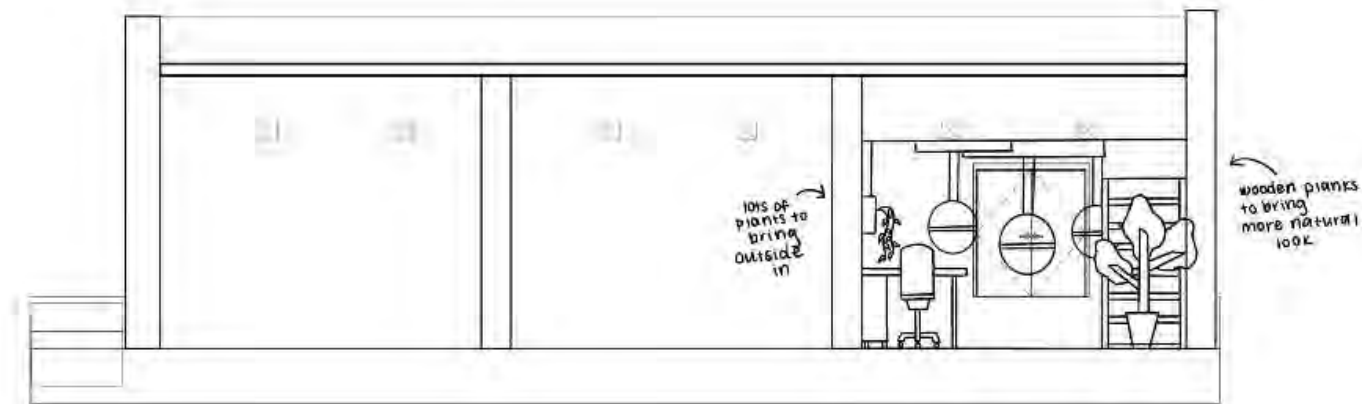
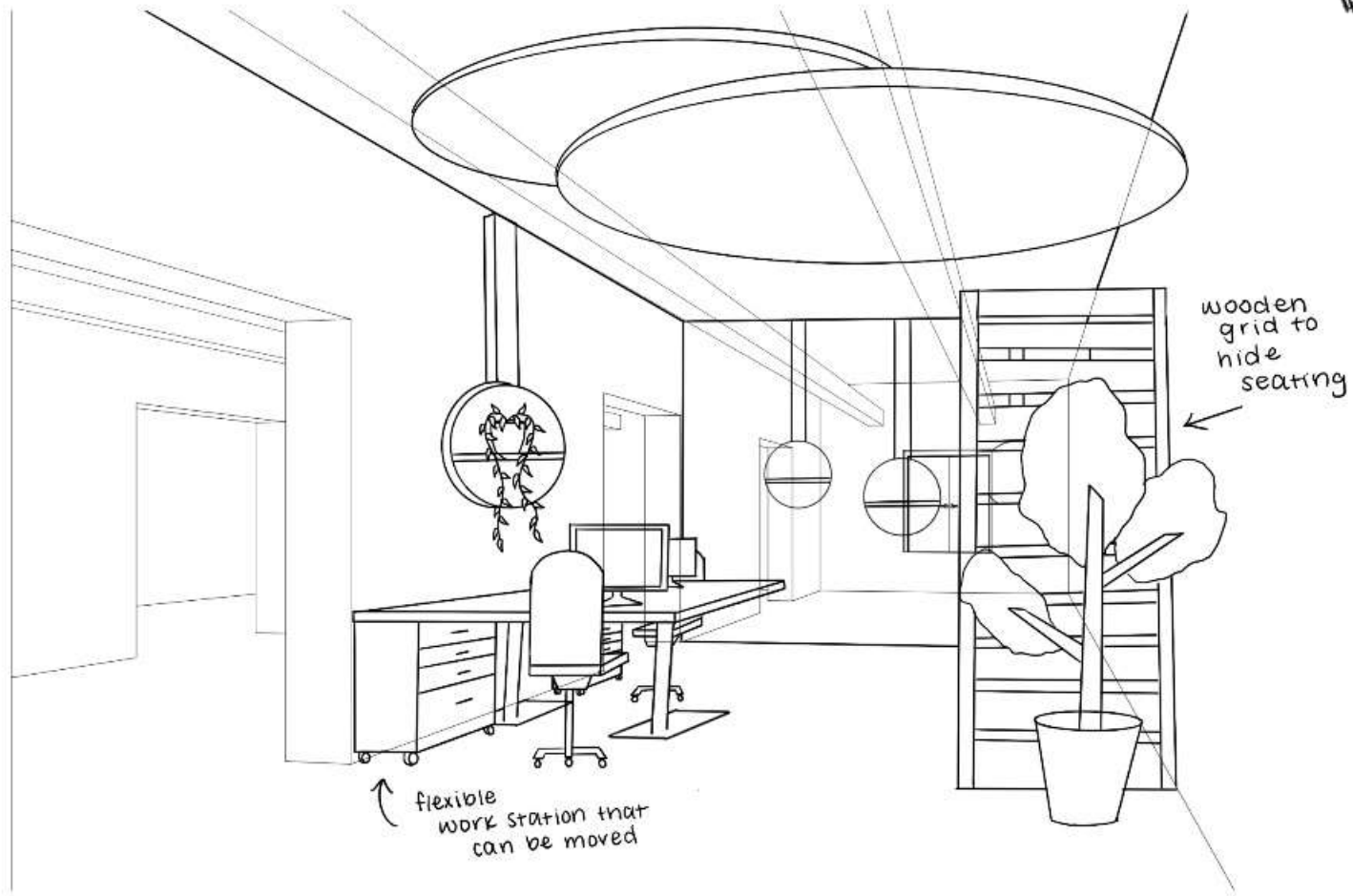
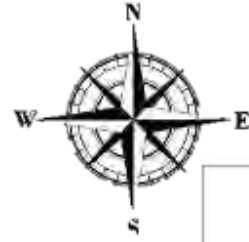
EAST 5TH STREET

# Assignment 9: Problem Resolution Studies

## Entryway Option 1

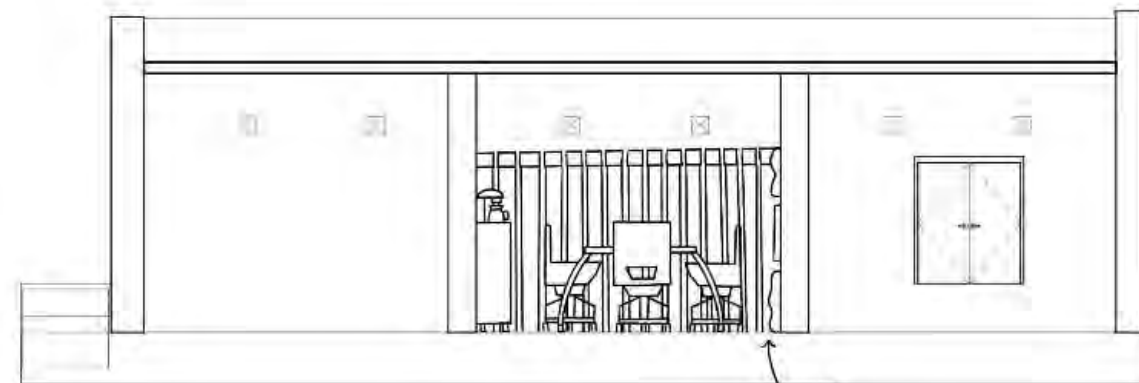
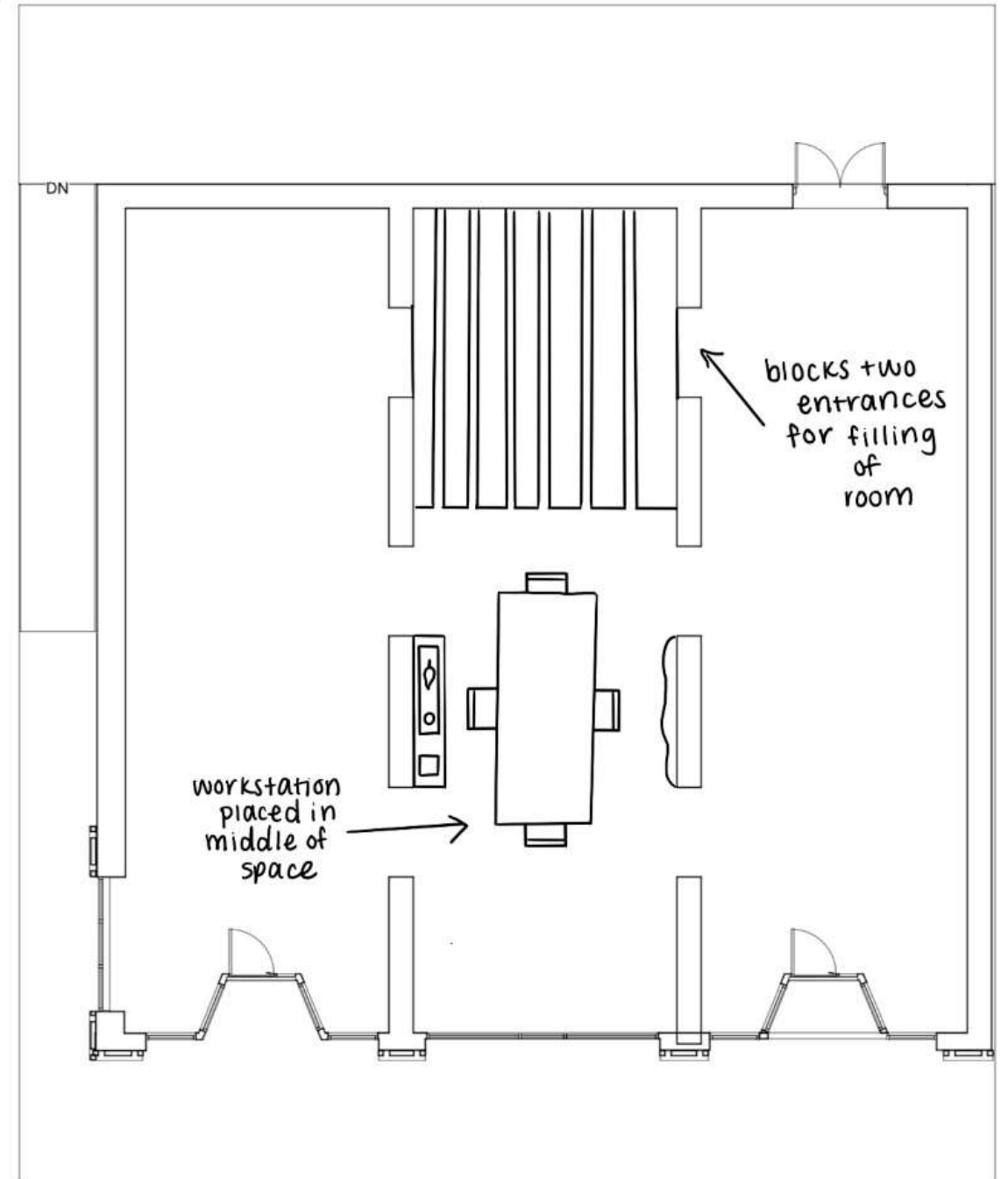
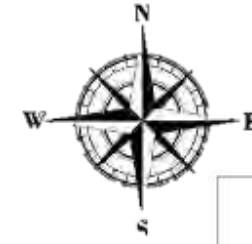
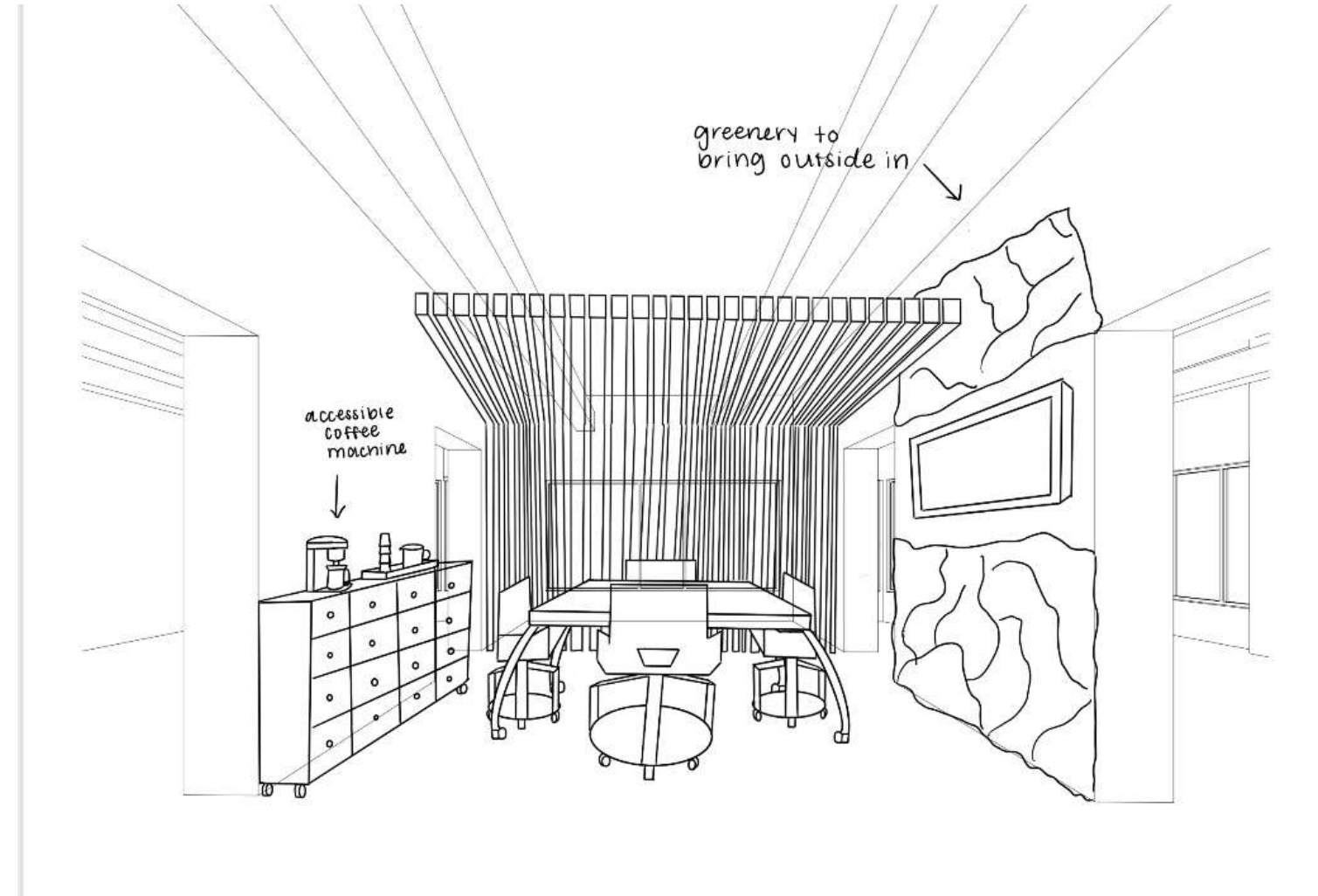


# Entryway Option 2



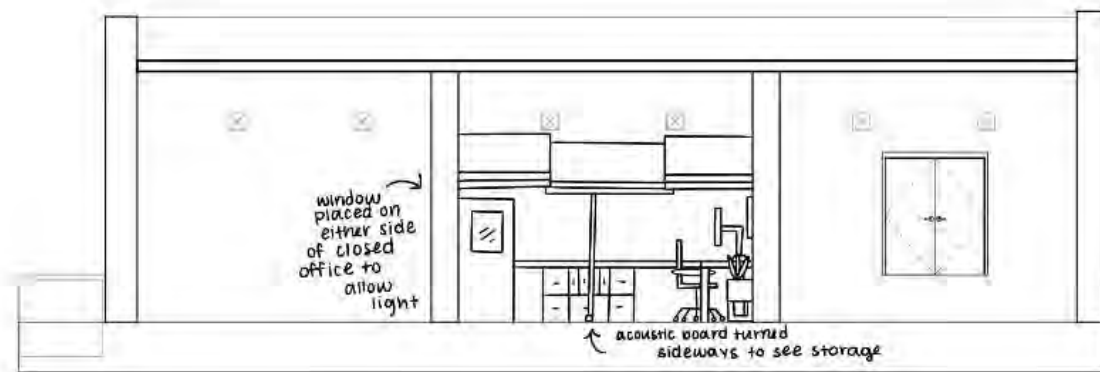
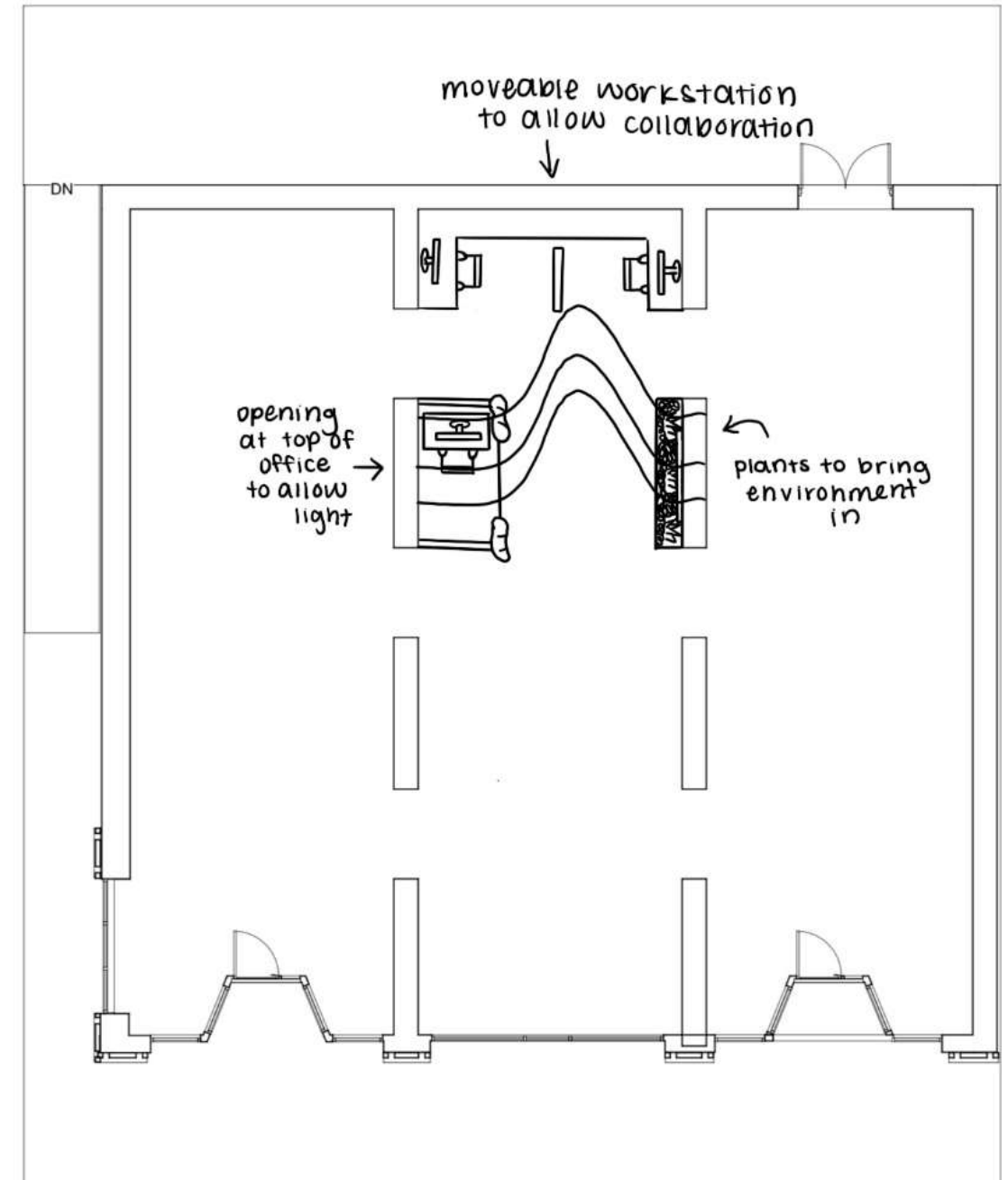
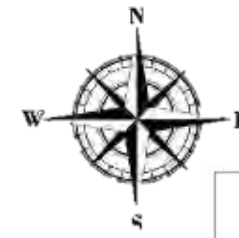
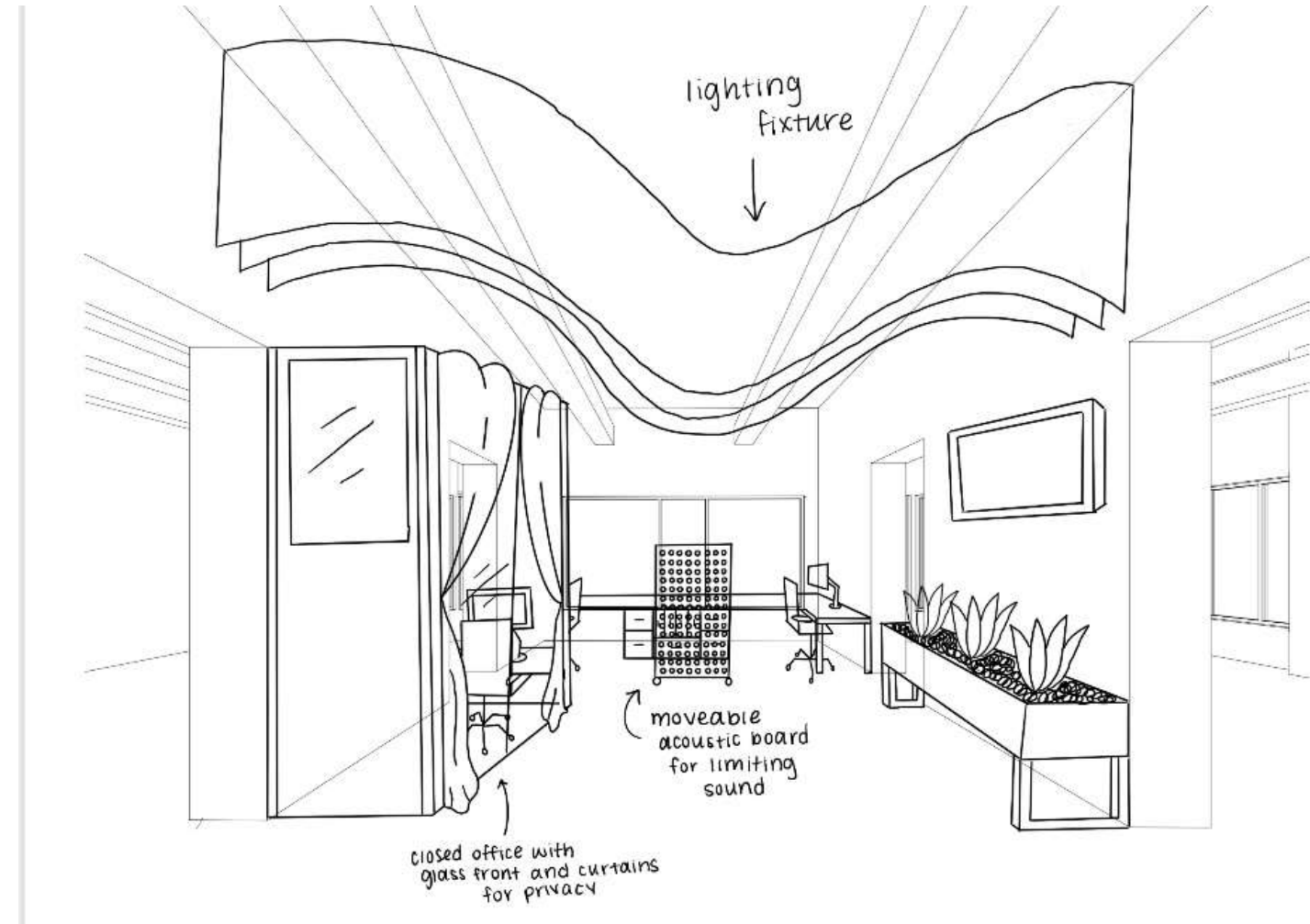


# Ceiling/Daylighting Option 1

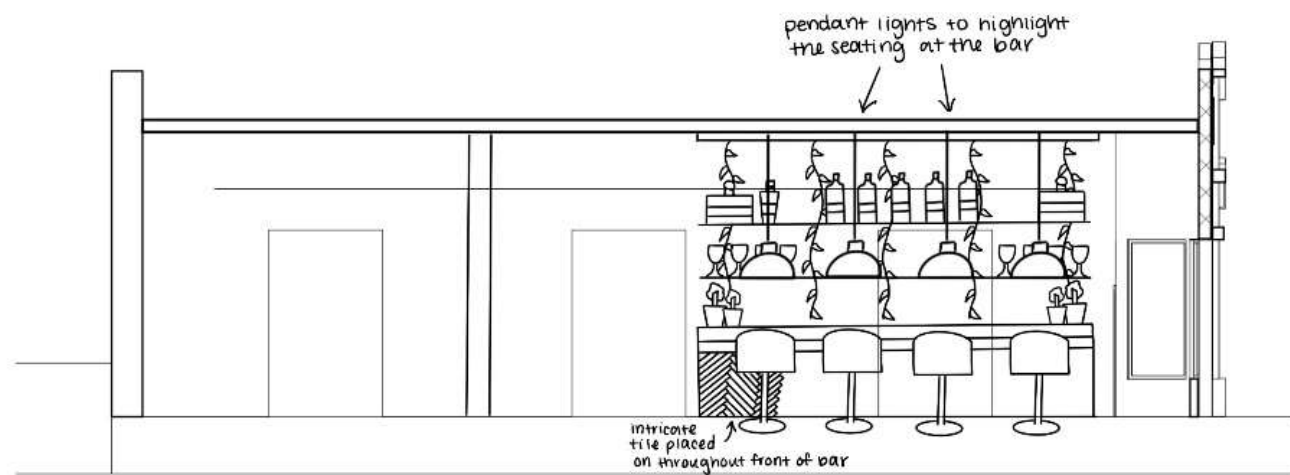
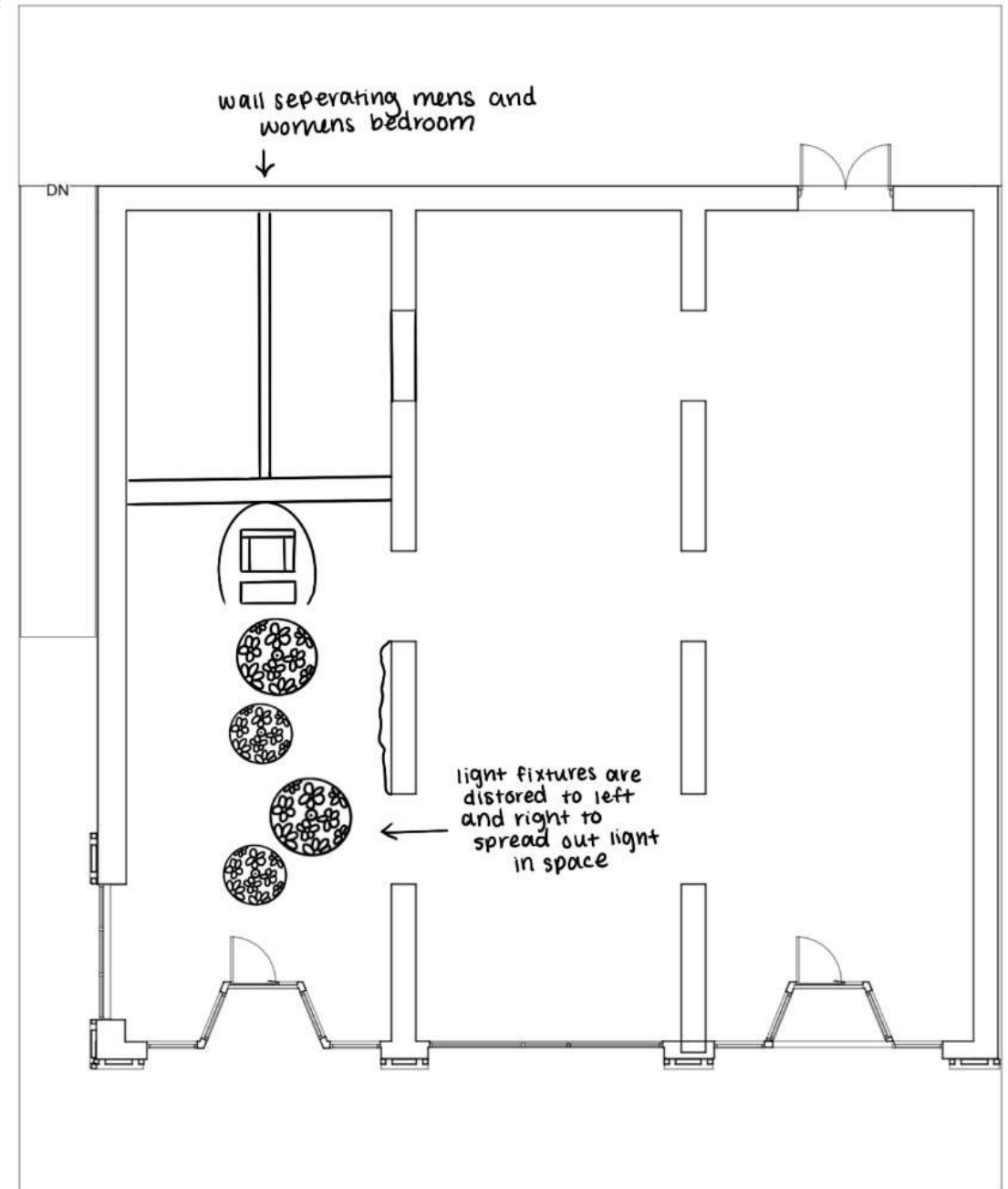
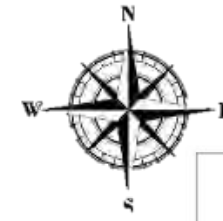


TV placed in middle of greenery to entertain

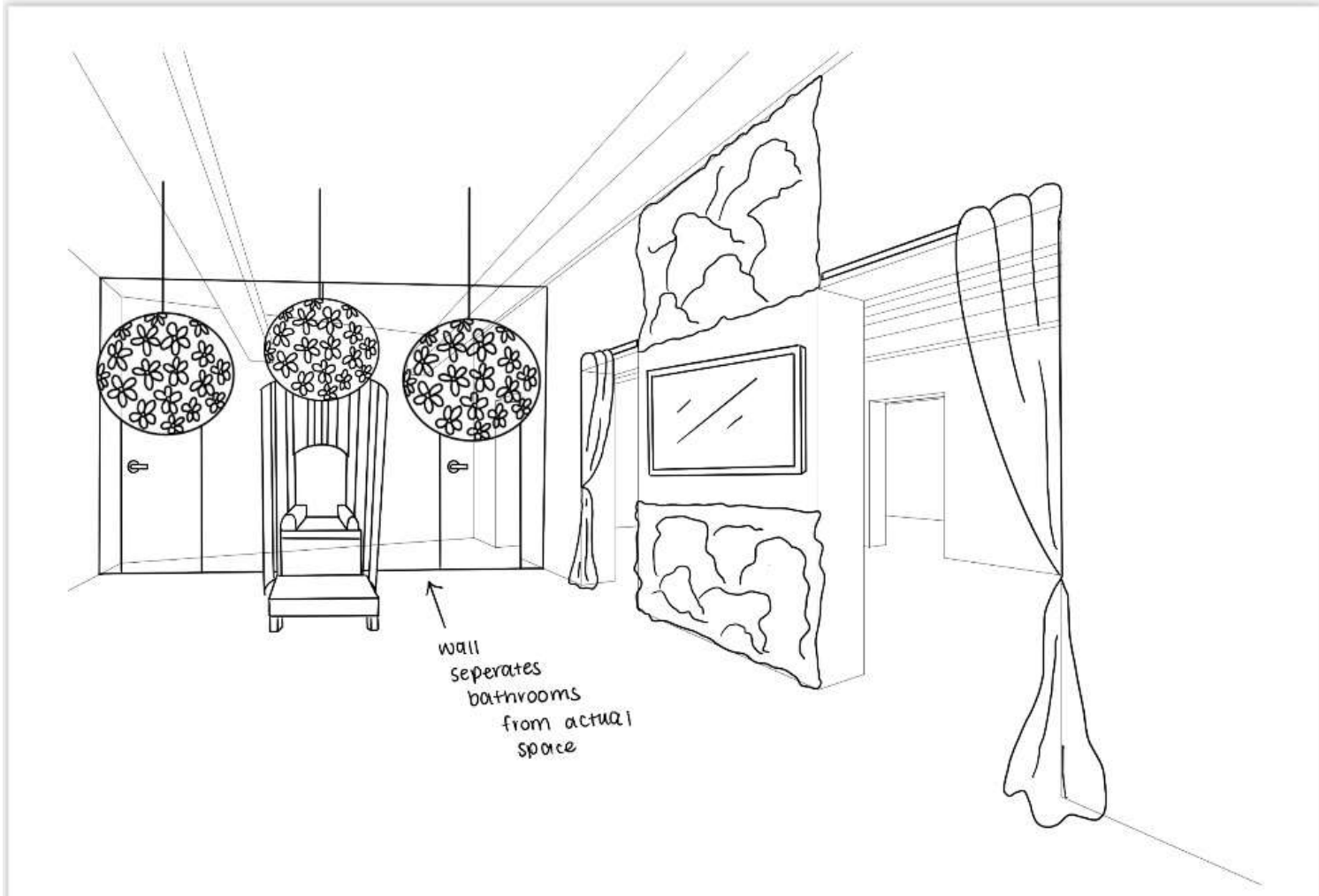
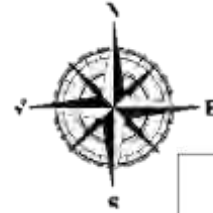
## Ceiling/Daylighting Option 2



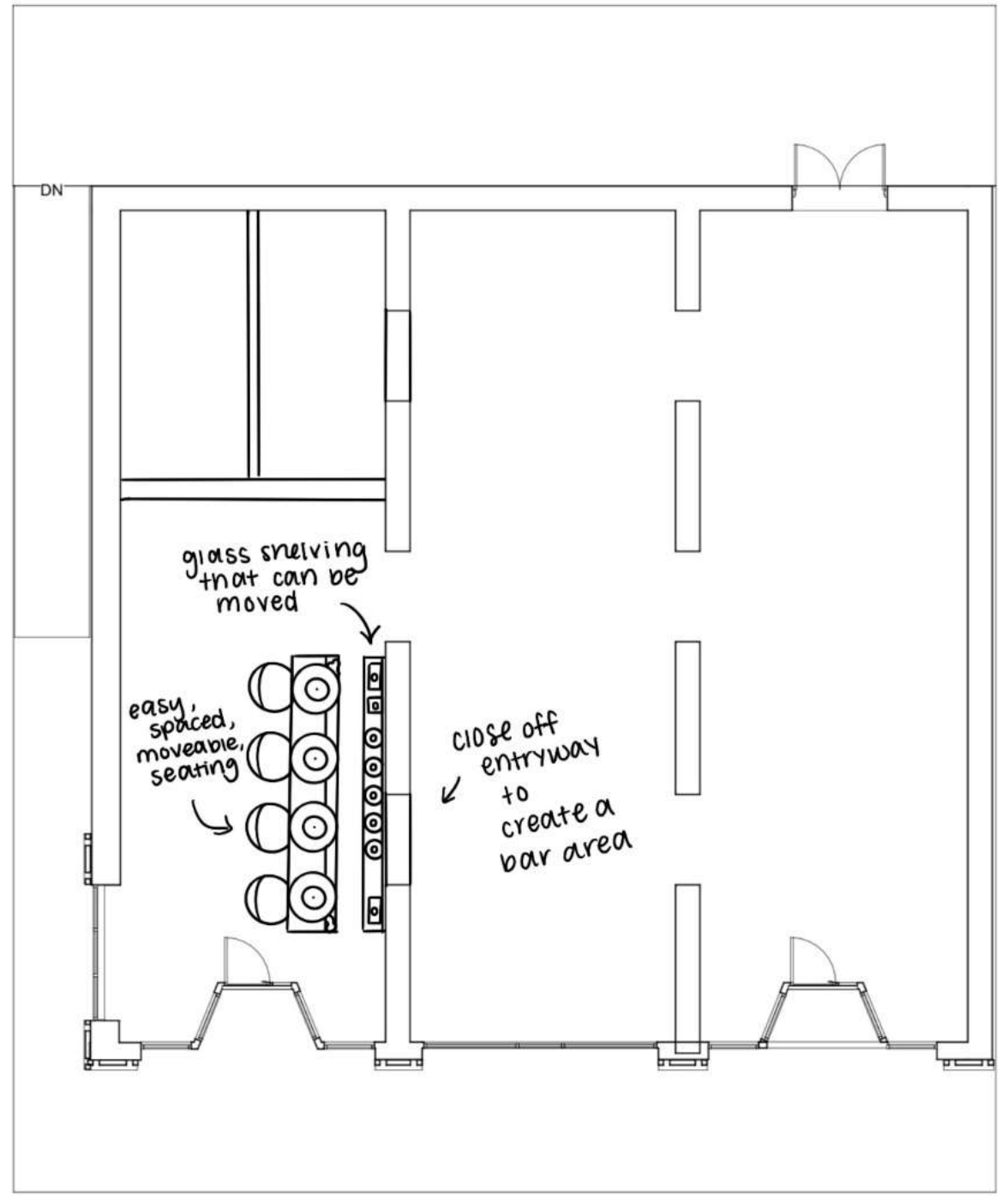
# Support Spaces Option 1



# Support Spaces Option 2



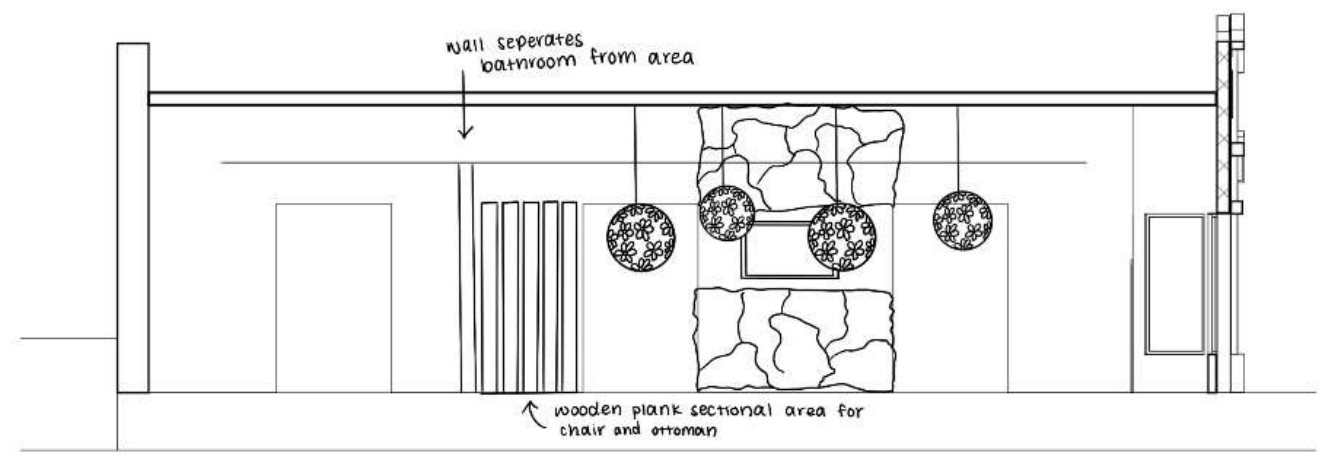
wall separates  
bathrooms  
from actual  
space



glass shelving  
that can be  
moved

easy,  
spaced,  
moveable,  
seating

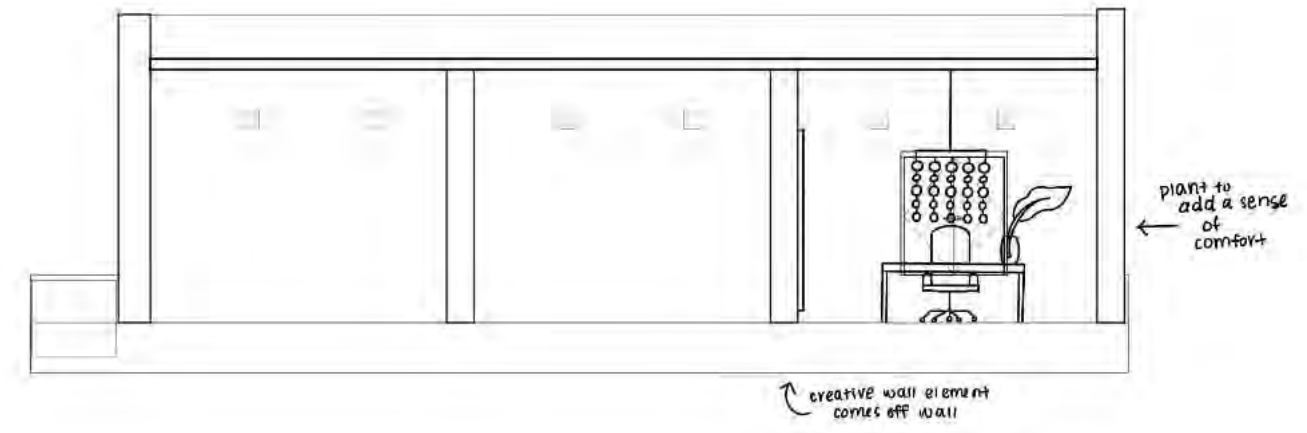
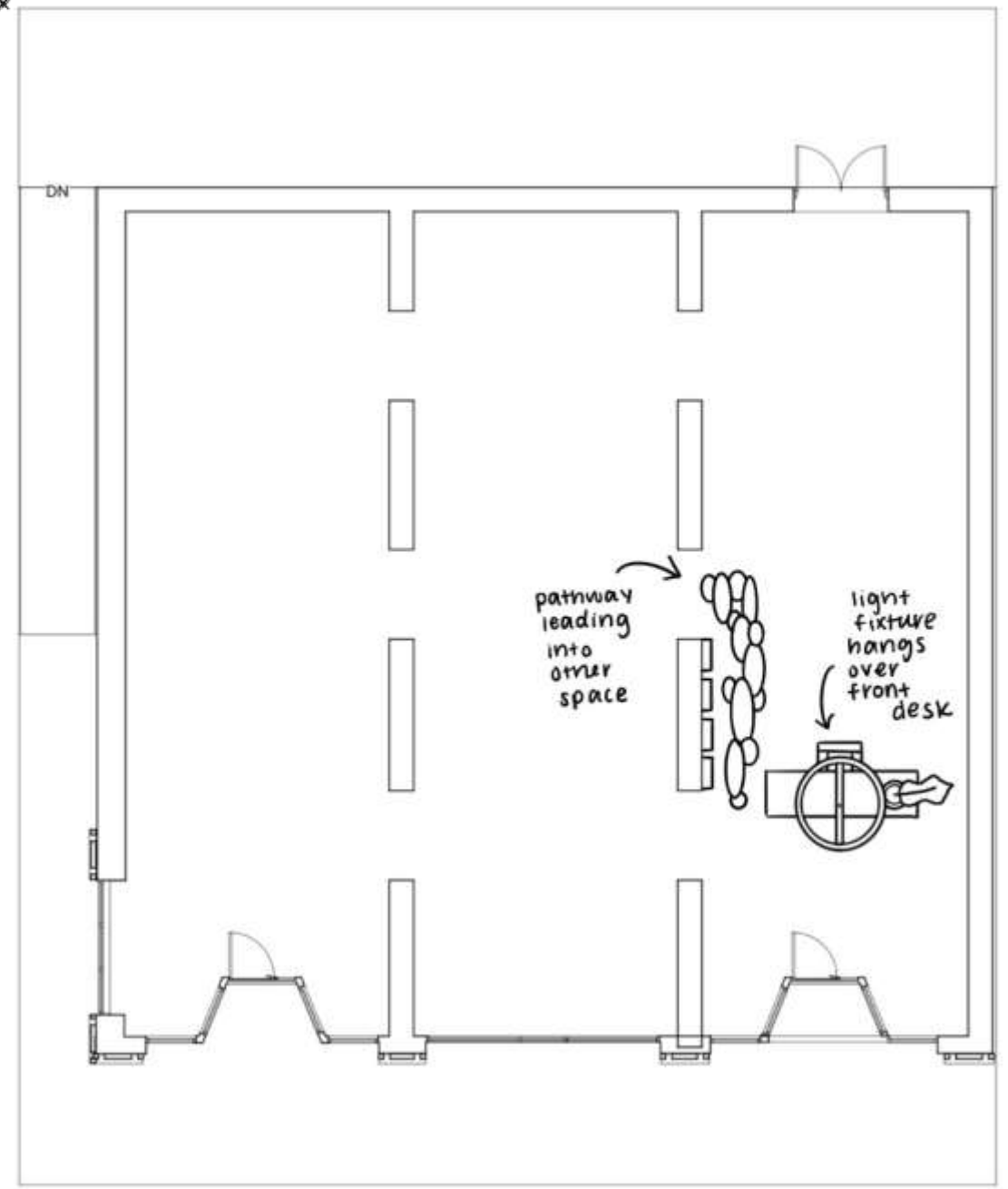
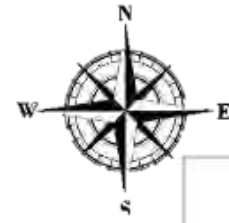
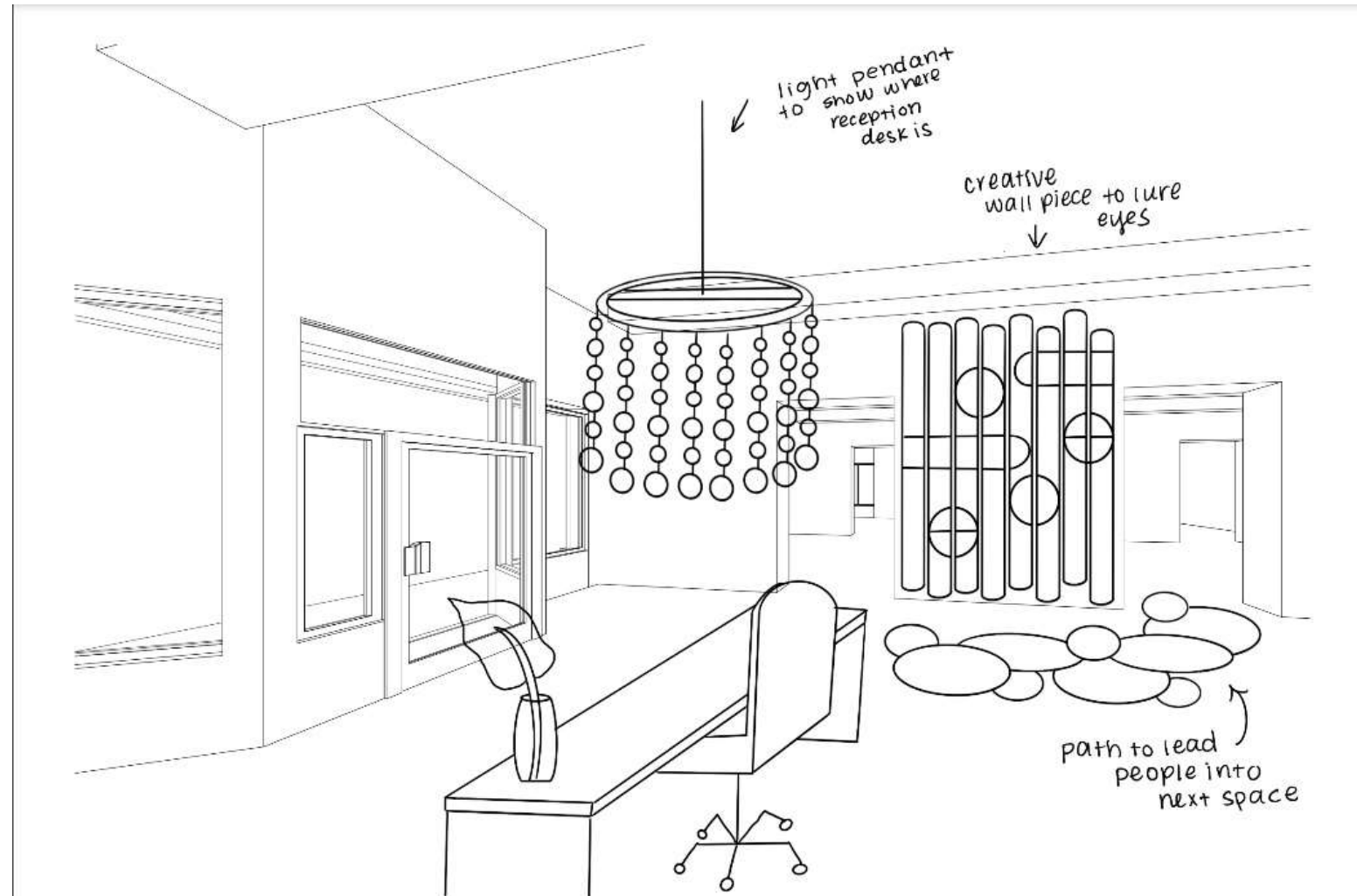
close off  
entryway  
to  
create a  
bar area



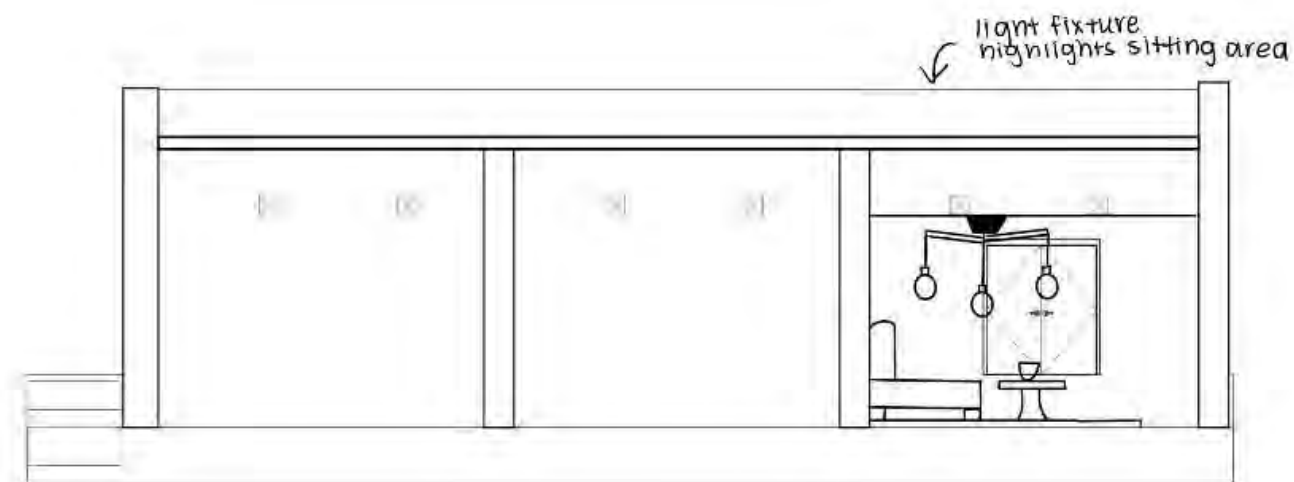
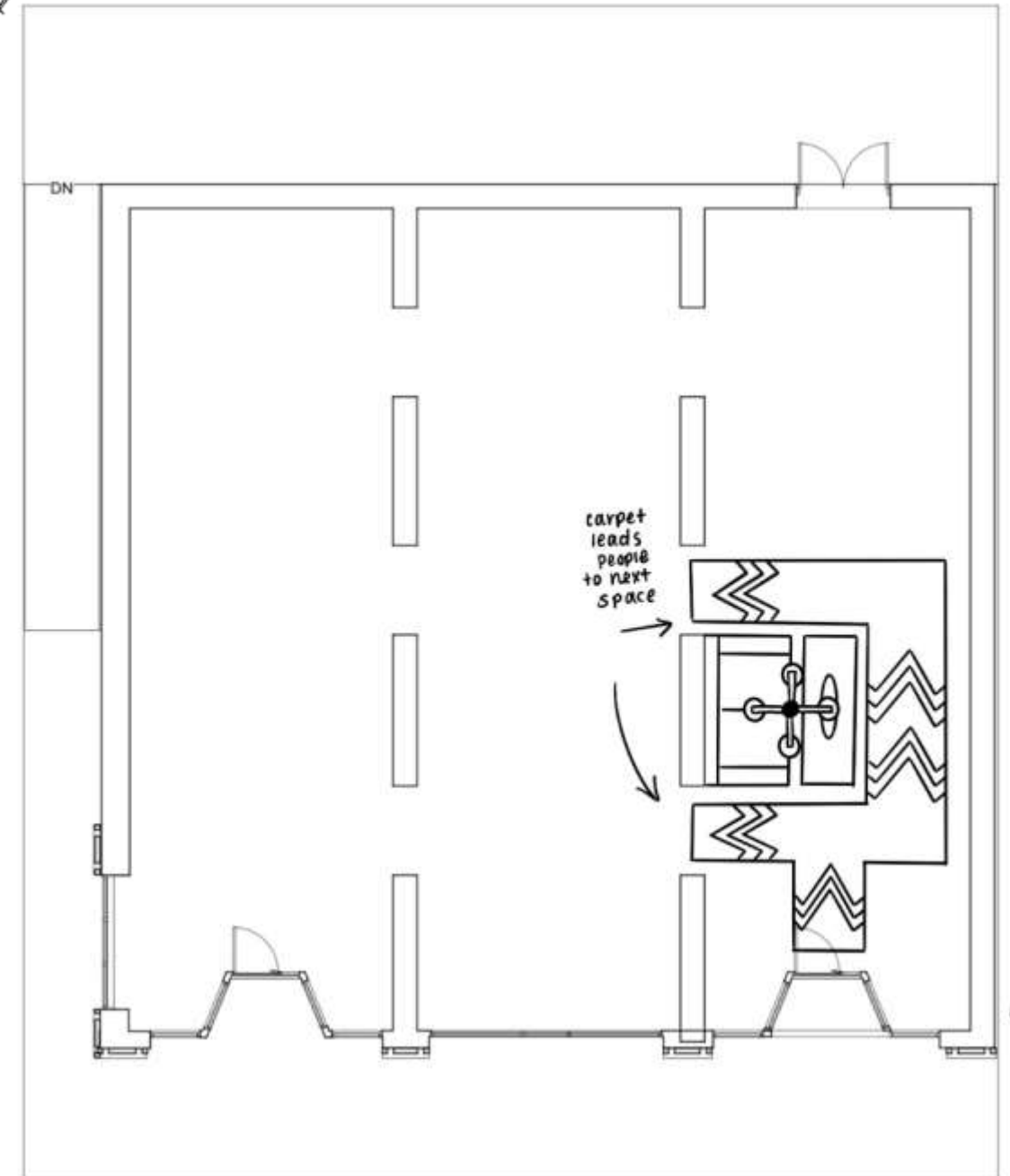
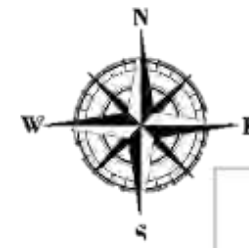
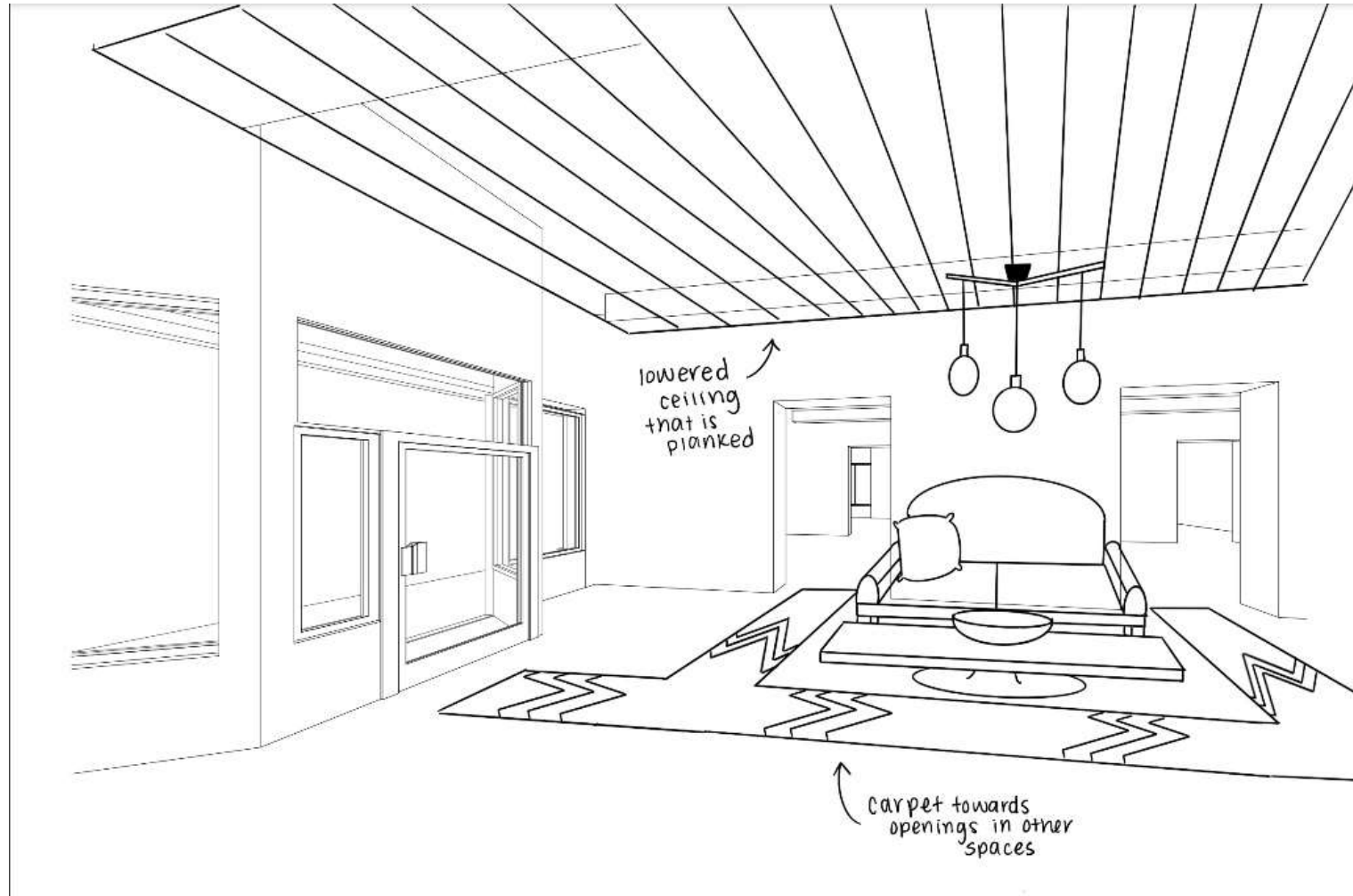
wall separates  
bathroom from area

wooden plank sectional area for  
chair and ottoman

# Exploration Option 1

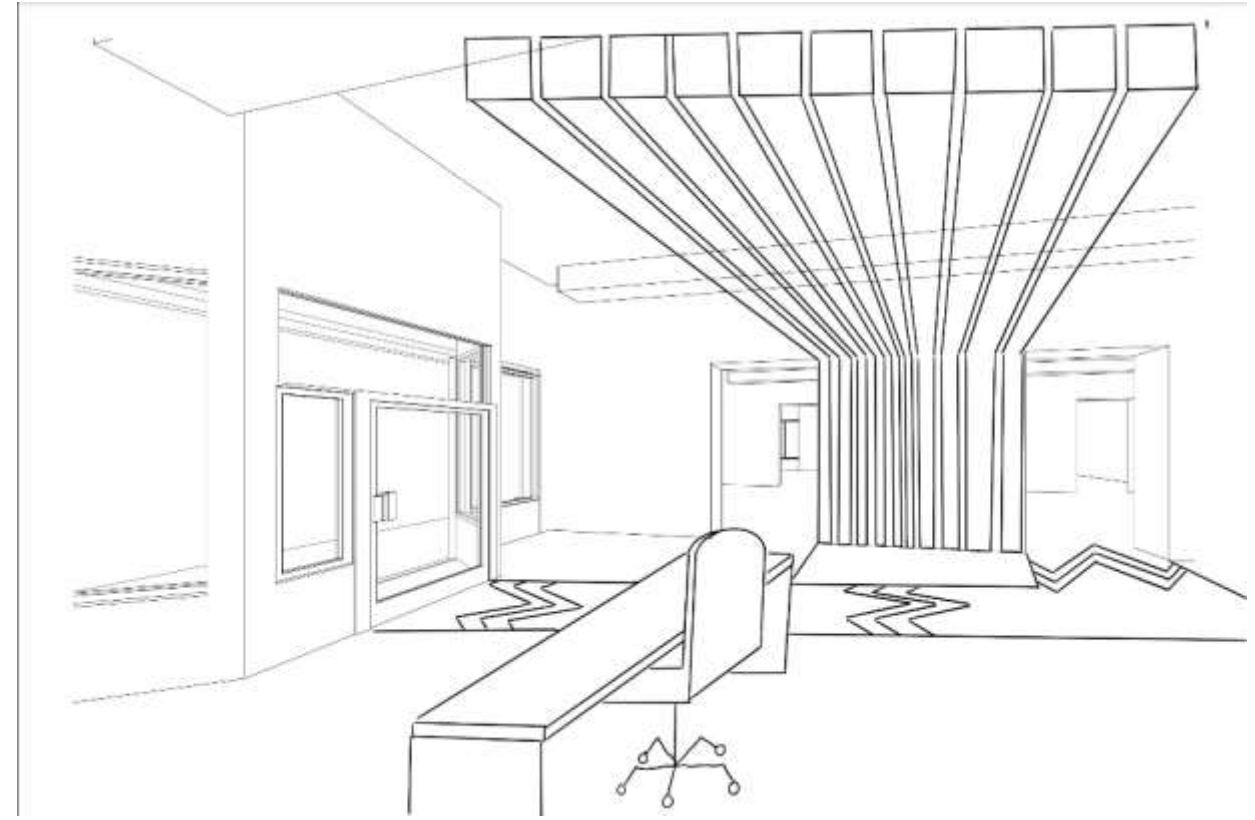
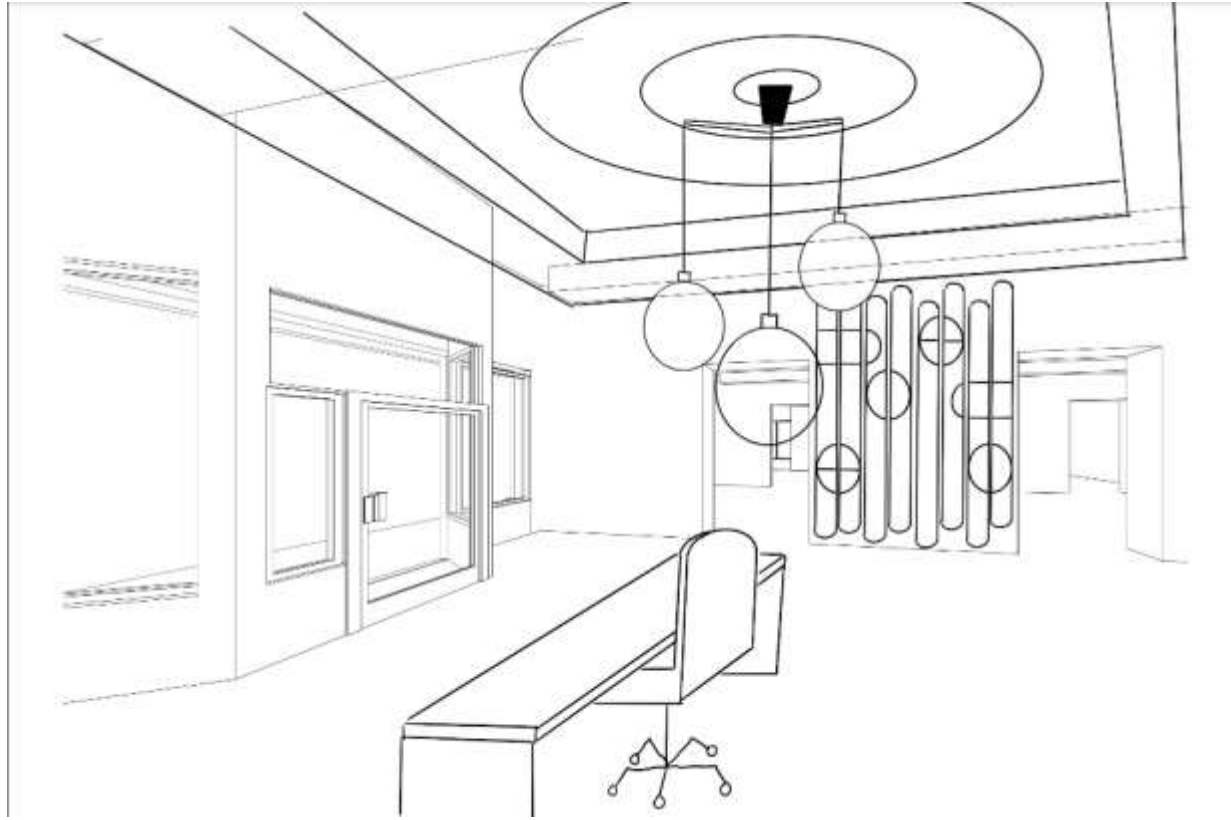


# Exploration Option 2

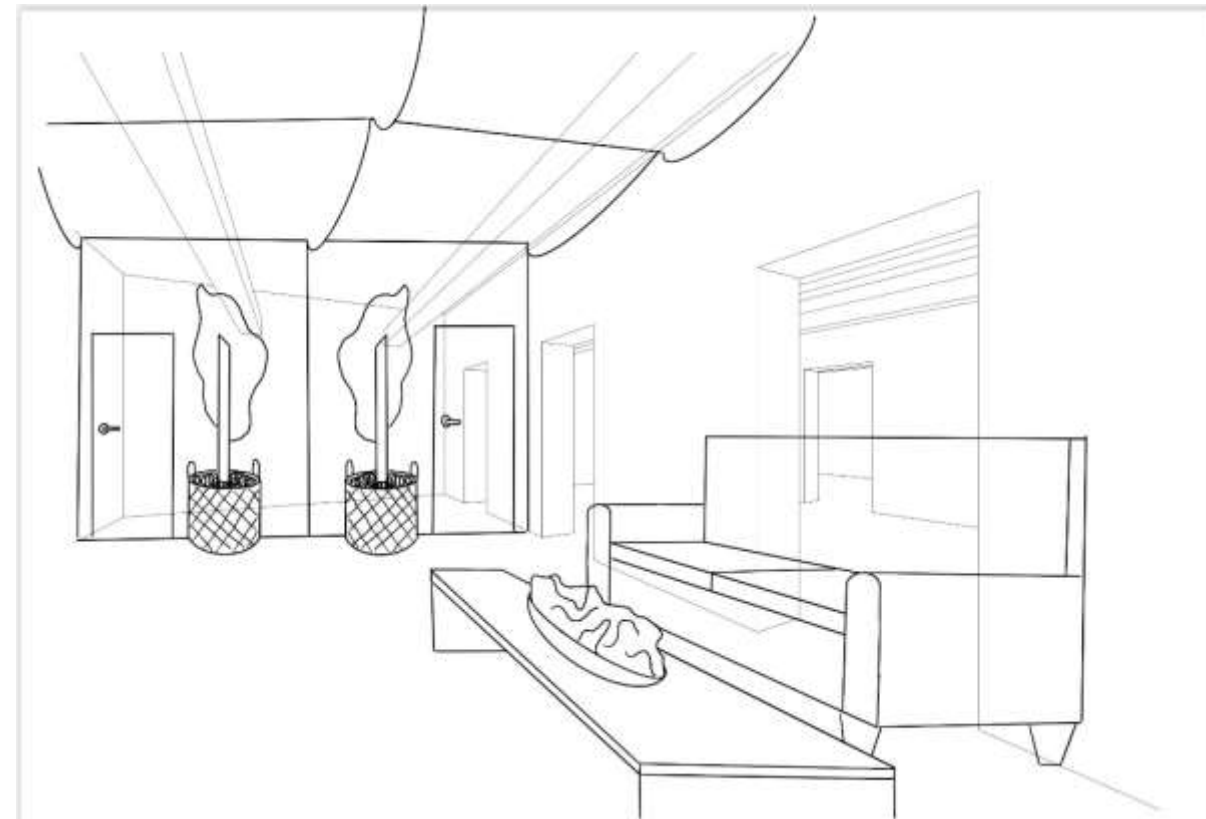
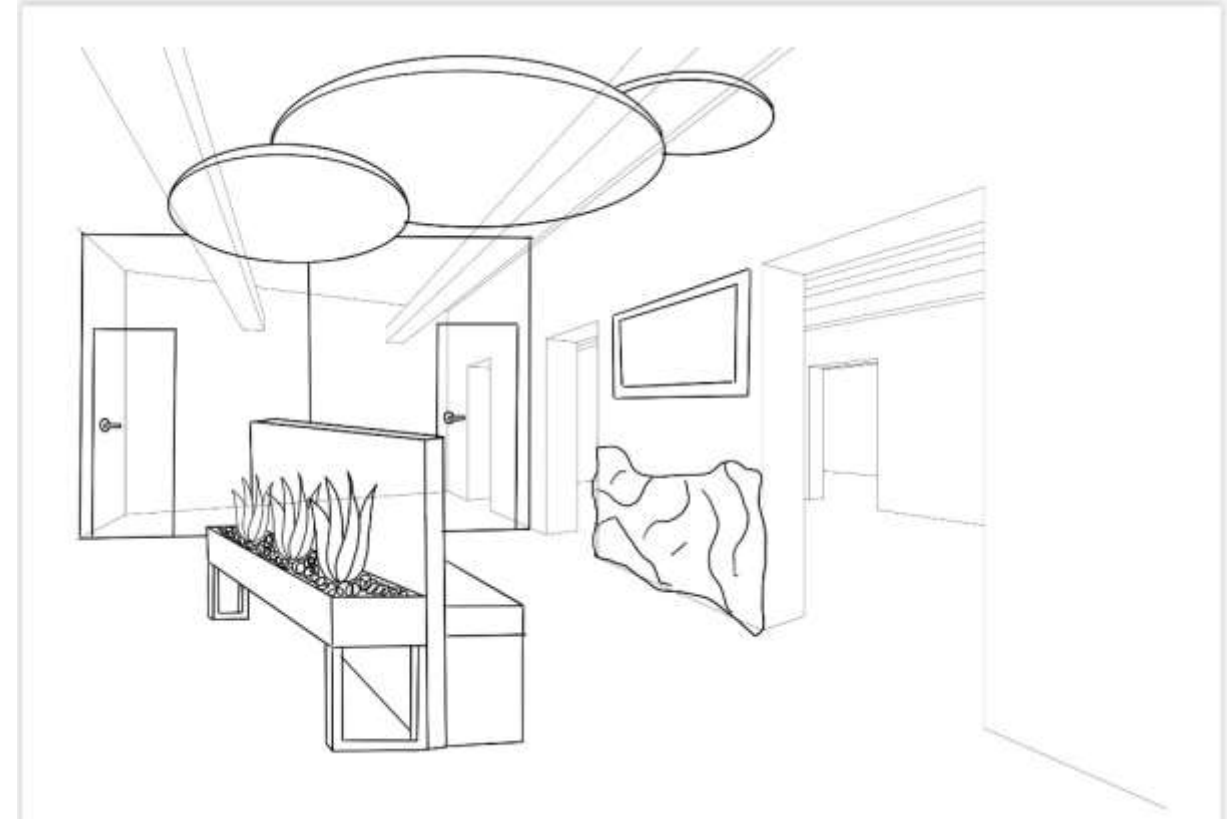


**Assignment 10: Design Synthesis Studies**

***Entry/Reception Sketches***

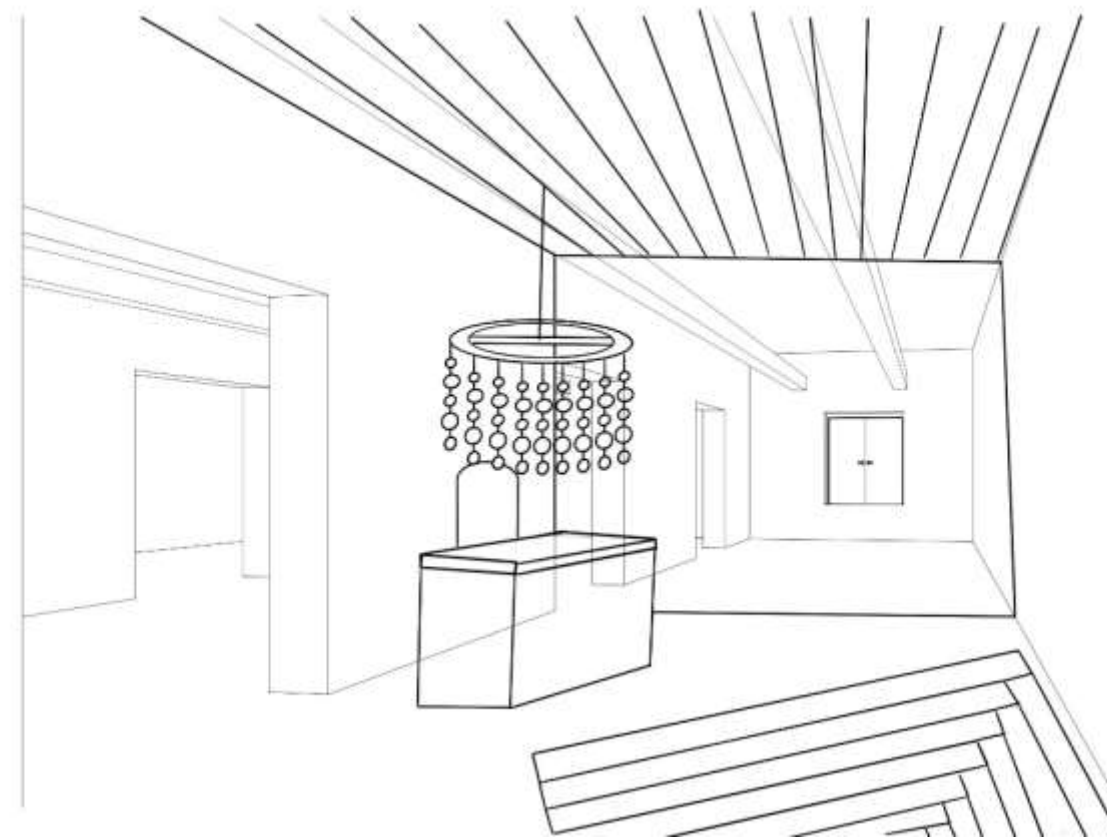
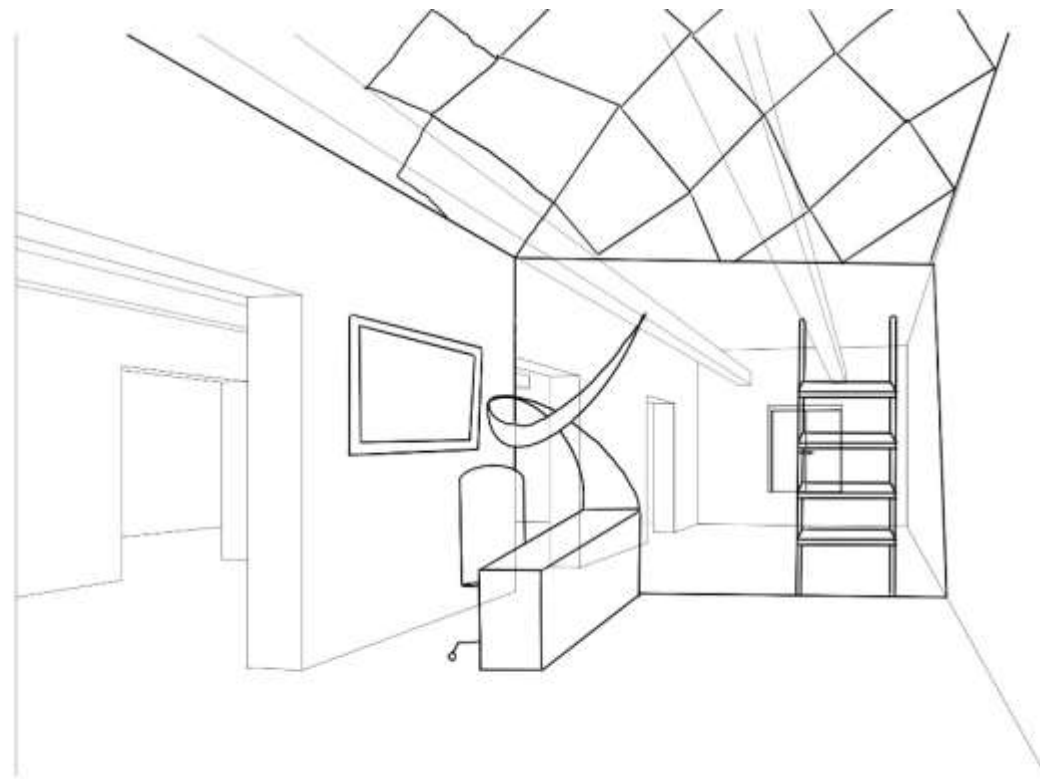


*Lounge Sketches*

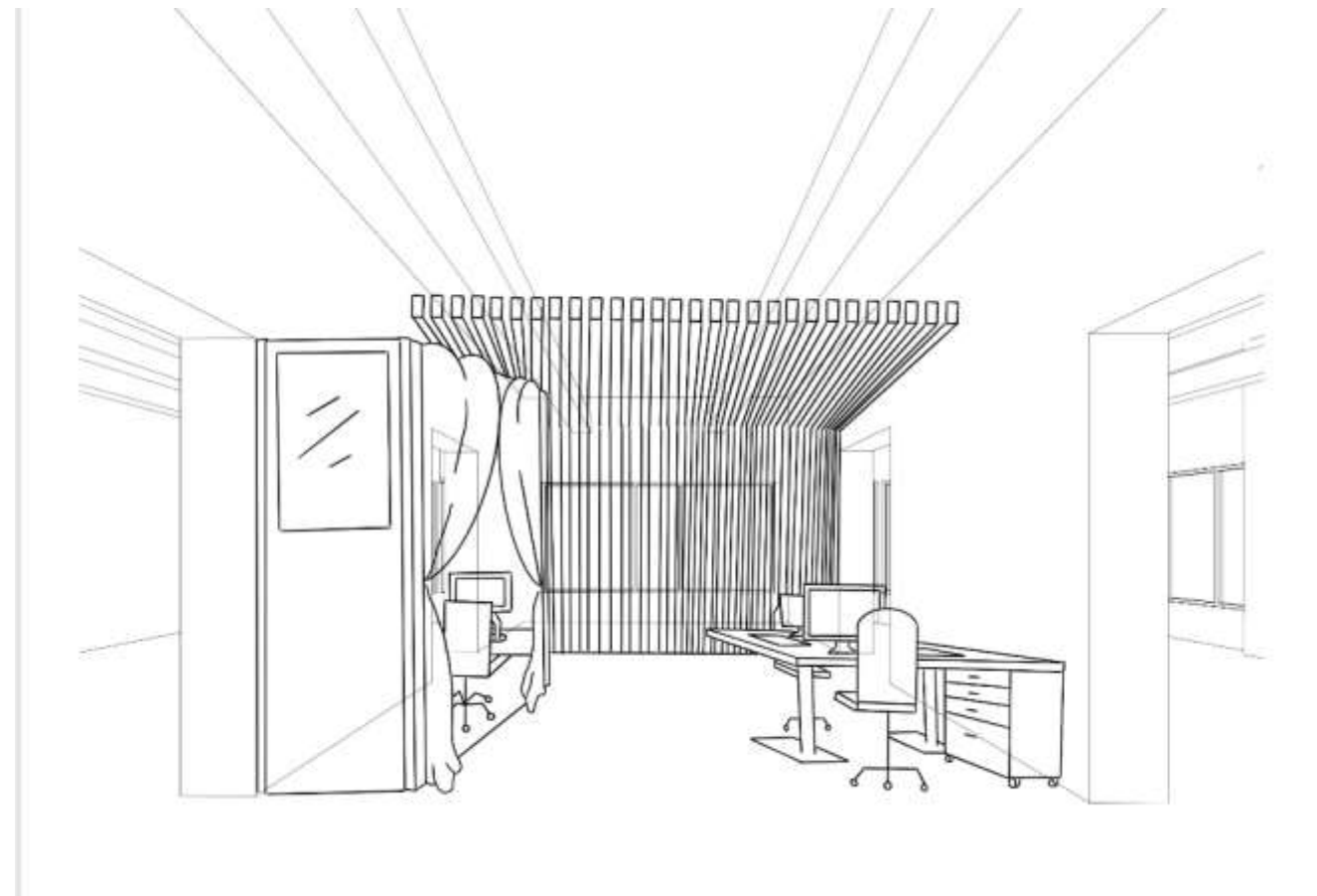
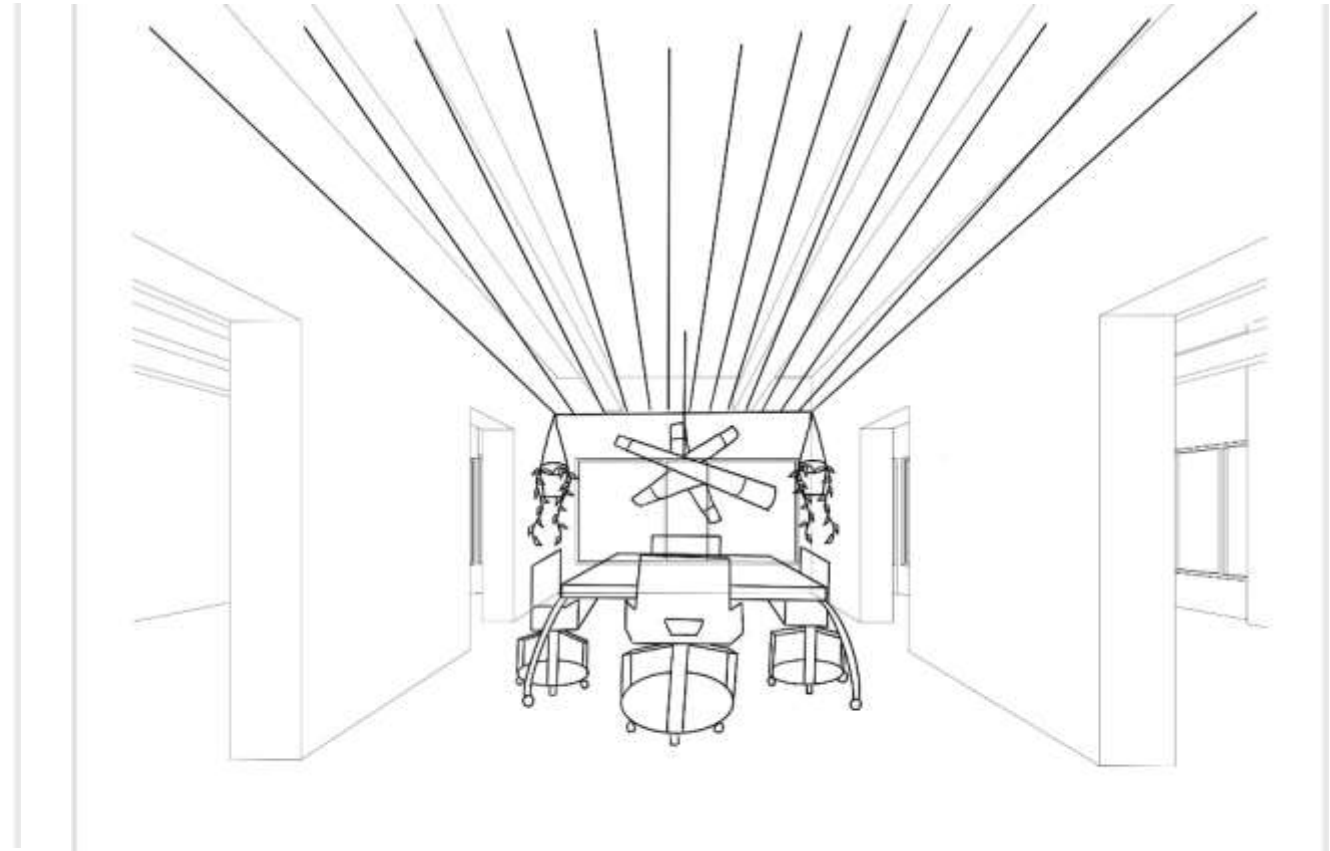
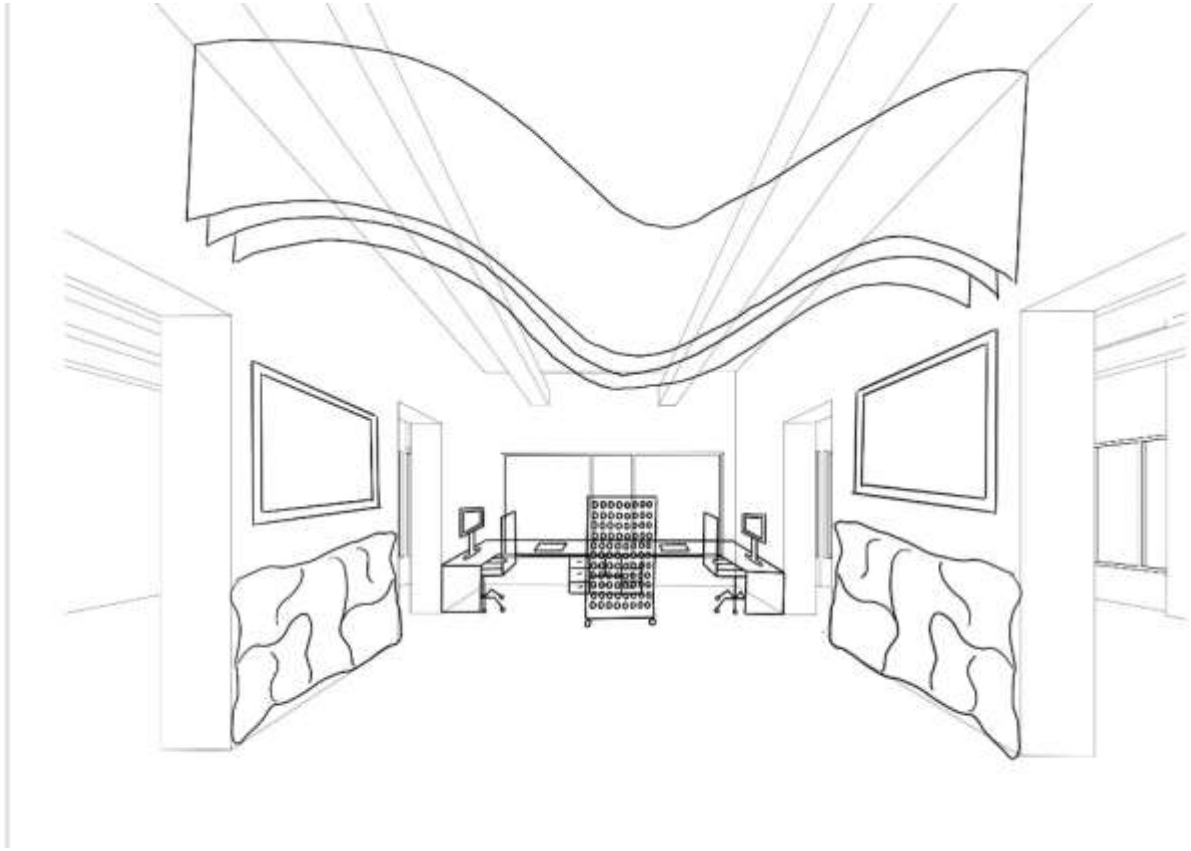




*Service Counter Sketches*



*Open Work Area Sketches*



**Assignment 11: Furniture and Finish Palettes**

*Open Work Area*



*Lounge Area*



**Assignment 12: Lighting Model**

