

## Assignment one

### Stakeholder Profiles

- Owner of the space Is a real estate developer
- The client is Herman Miller
- The users who be employees, customers, potential customers, and attendees at community events







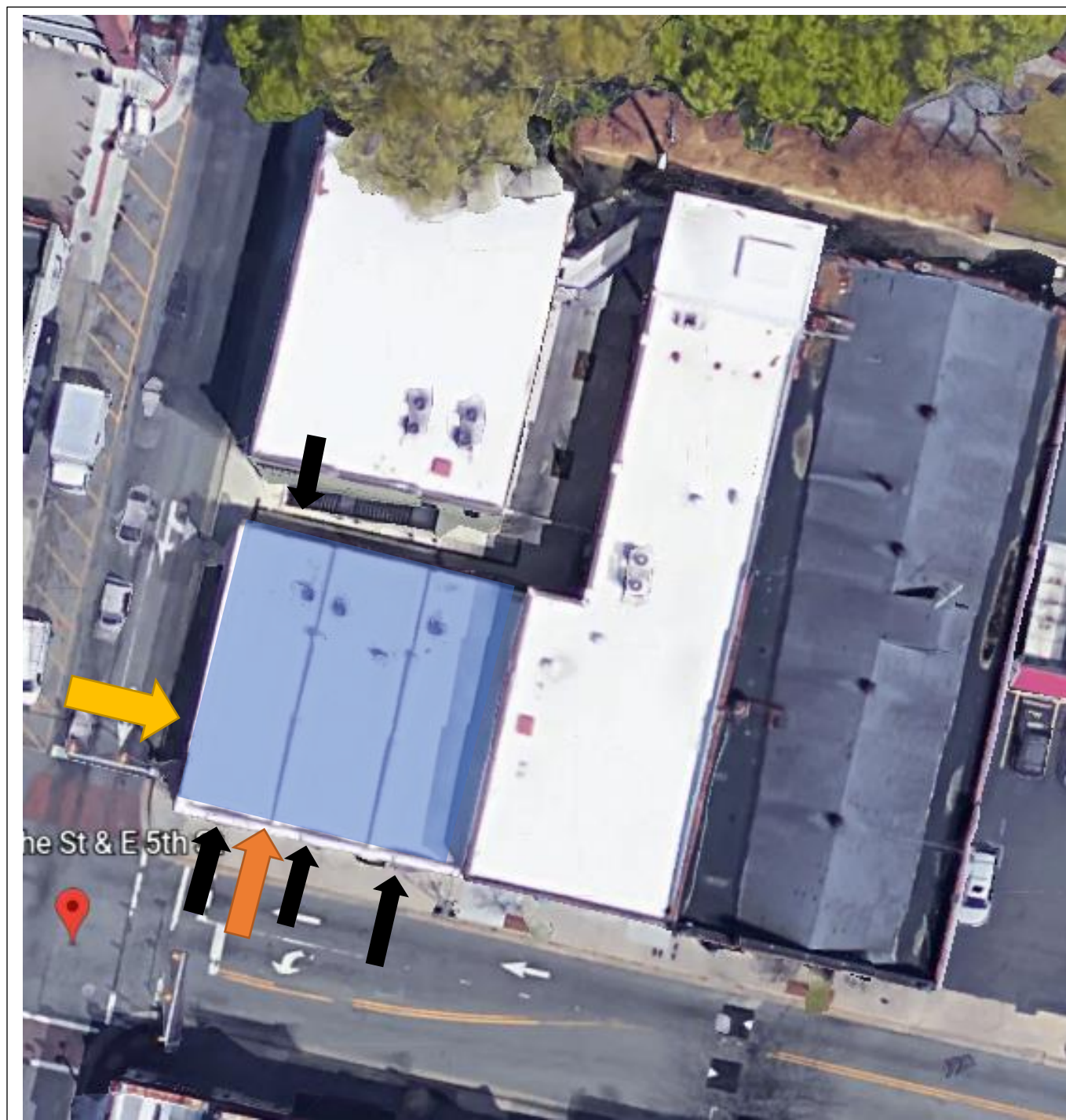
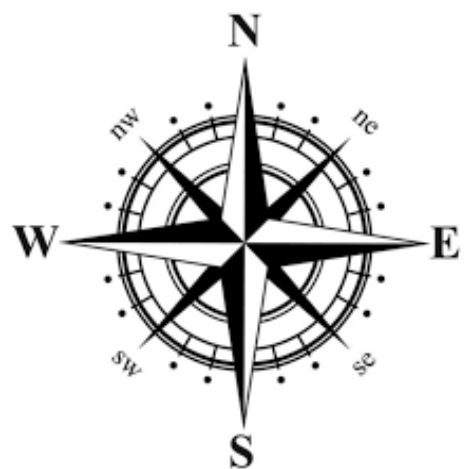
## Site profile

- 5th and Cotanche Greenville, NC
- The building has 3,000 square footage



### Site analysis

- Entrance 
- Morning light 
- Evening light 
- Tenant space 



## Design Problem Statement

- The backdoor is not ADA approved for a wheelchair access
- There is not enough natural light or windows
- Too many bathrooms taking up more space
- Three exits instead of one
- Two walls in the middle are taking up too much space and blocking off rooms



## Assignment 2

### Research

#### Universal Design

- The design of buildings, areas and goods that is made for all people to use
- Ada standard door opening is 32 inches
- Ada standard bathroom has 30 inches by 48 inches space for the sink
- Countertops needs to be above the floor by 36 inches

#### Greenville History

- Greenville was founded in 1771
- Located on the Tar River
- Now is one of the major economic and industrial cities of eastern North Carolina
- In Greenville, most educational buildings and industrial facilities must have a two-year inspection
- One- and two-family residents don't have to have fire inspections unless they want one
- Greenville has 27 historic landmarks and five districts
- For a historic building to have any exterior change done to it, it must have a certificate of appropriateness

#### Workplace and Social Behavior

- Taylorism during the 1900's
- 1960's burolandschaft used organic shapes and patterns in the office design and had lots of plants in the open area spaces
- 1960's action office
- 1980's cube farm used cubicles in the building as office spaces for employees
- Each generation varies with social behavior in the workplace
- The design of the workplace also plays a role on the social behavior of employees

#### Sustainability in interior environments

- LEED uses less waste and uses reuses office supplies
- LEED is a more sustainable way for offices and helps uses less energy
- A healthy work in environment should have less levels of co2 in the air and have natural daylight
- There should also be plants, clean sir supply, and thermal comfort

### Assignment 3

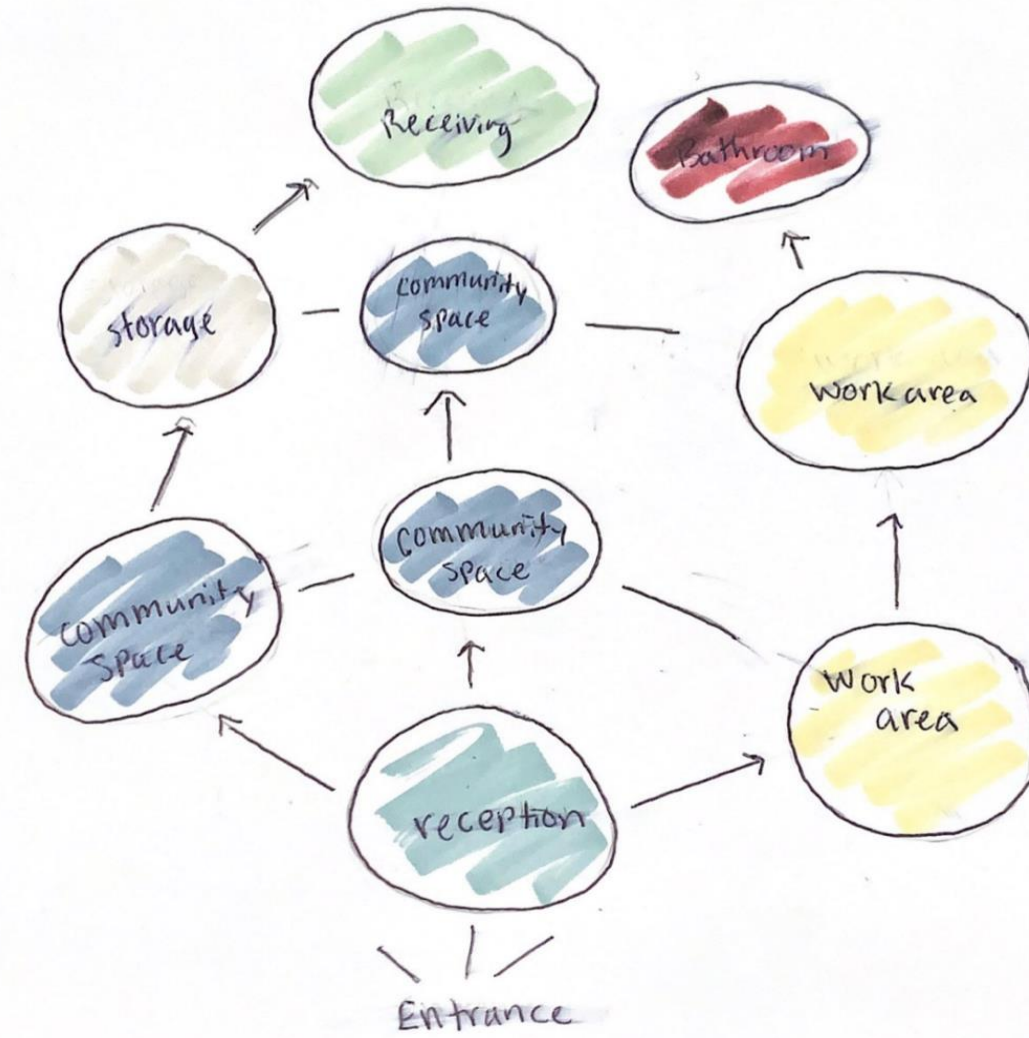
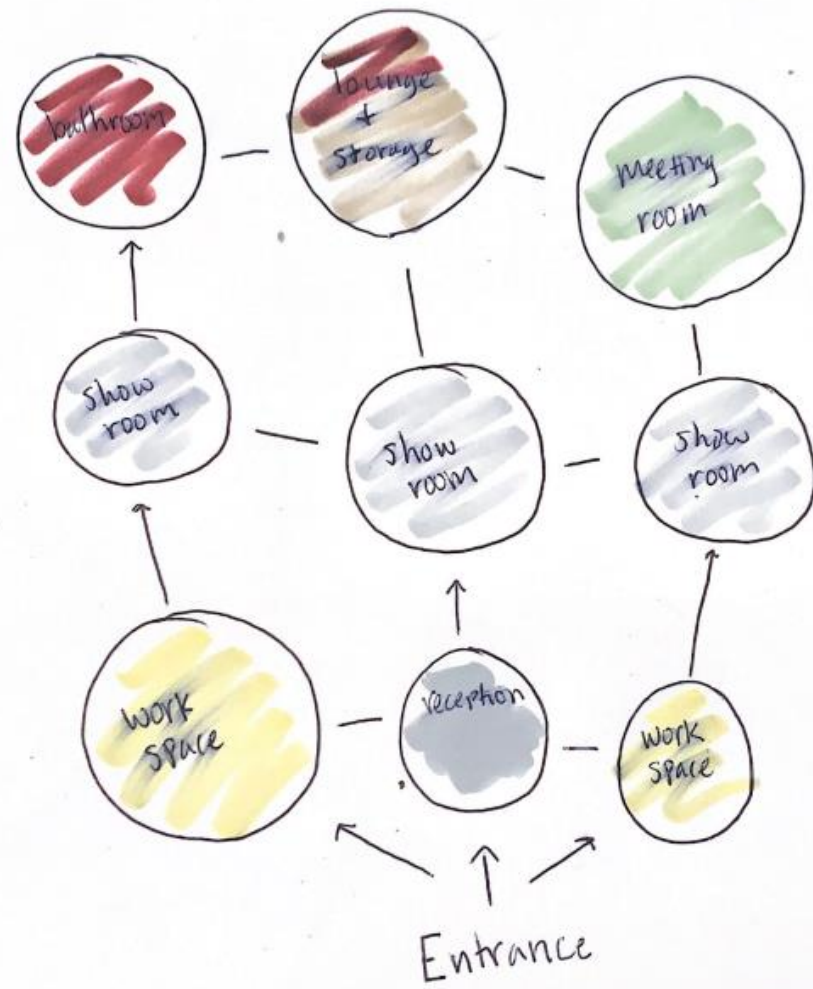
#### Concept

- Creating one space out of three rooms and making it a clean and finished look
- Stage furniture in the center of the building to show examples for customers
- Offices will be open and approachable by customers if they need help
- Colors will be neutral
- Lots of lighting



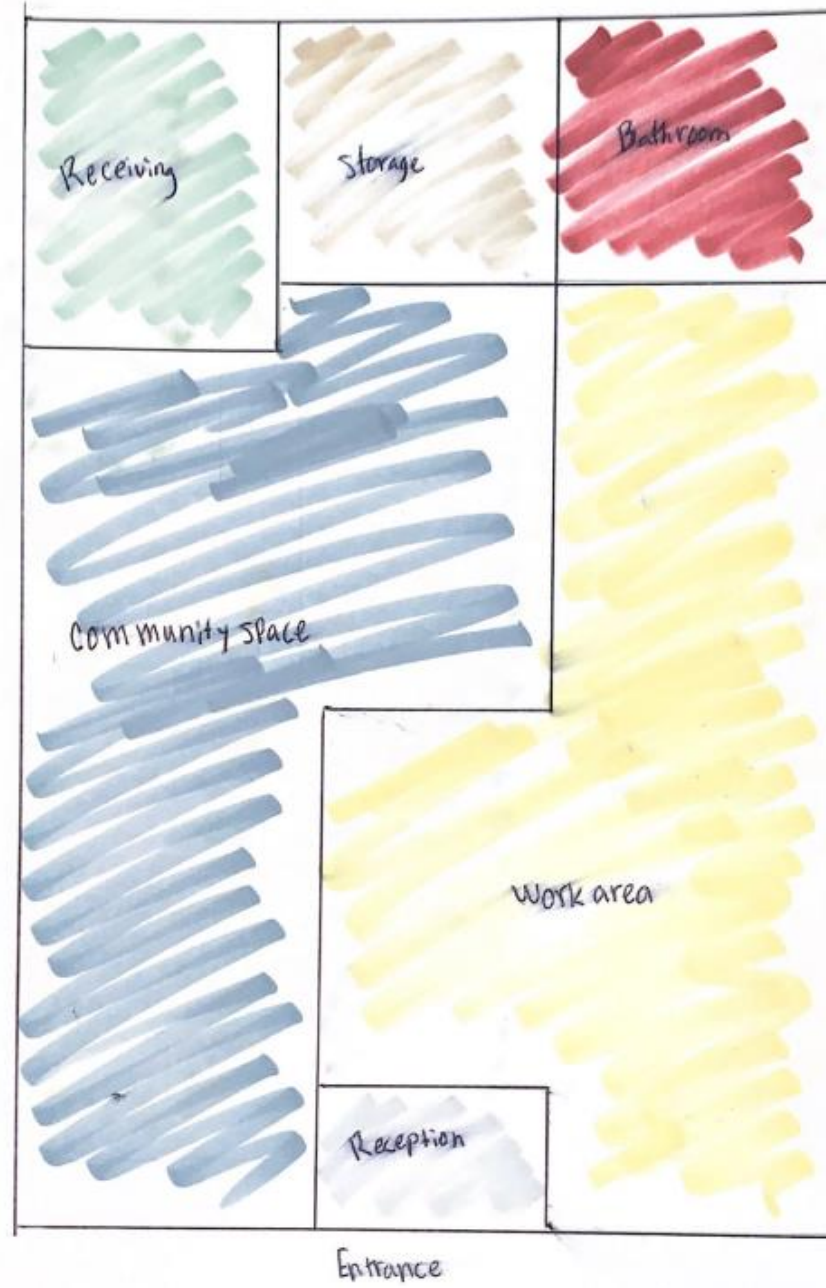
Assignment 4

Bubble diagram



Assignment 4

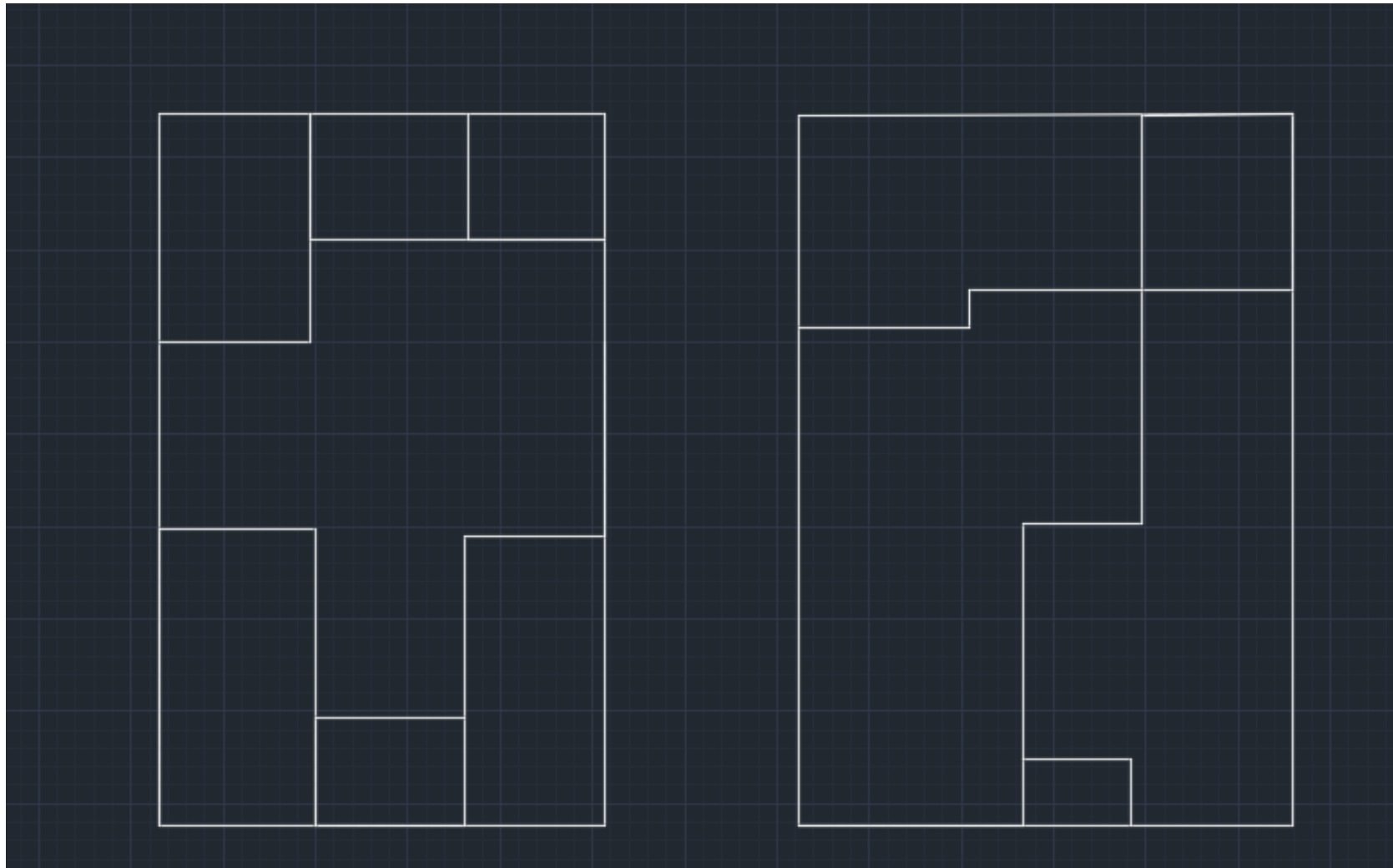
Block diagram





Assignment 4

Auto cad sketch 1 and 2



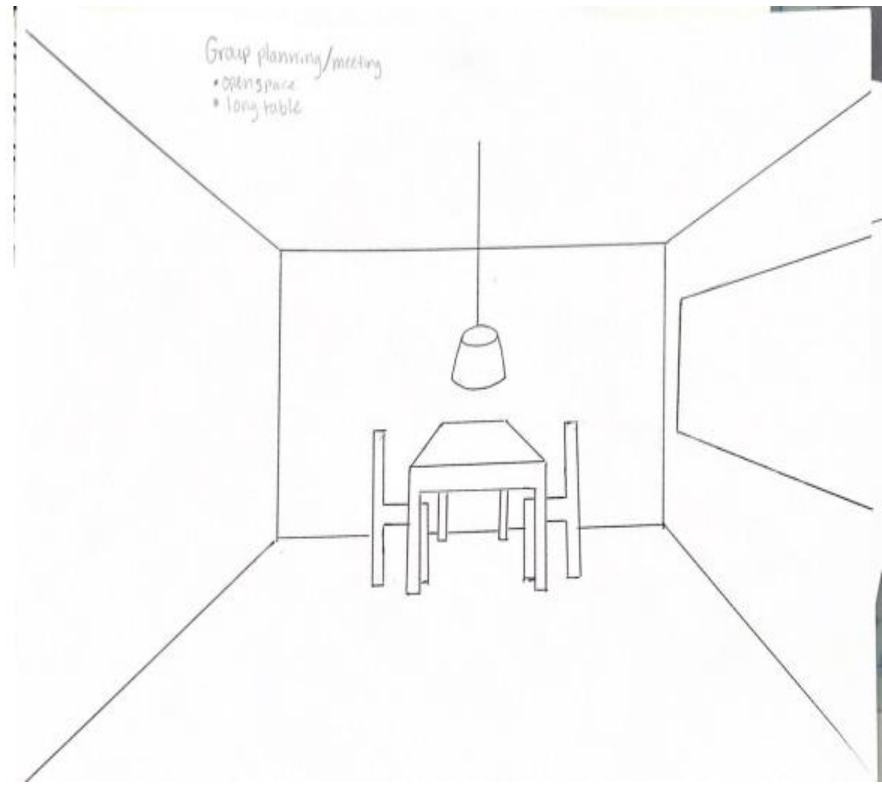
Assignment 5

Pictures



Assignment 5

Meeting room



workspace

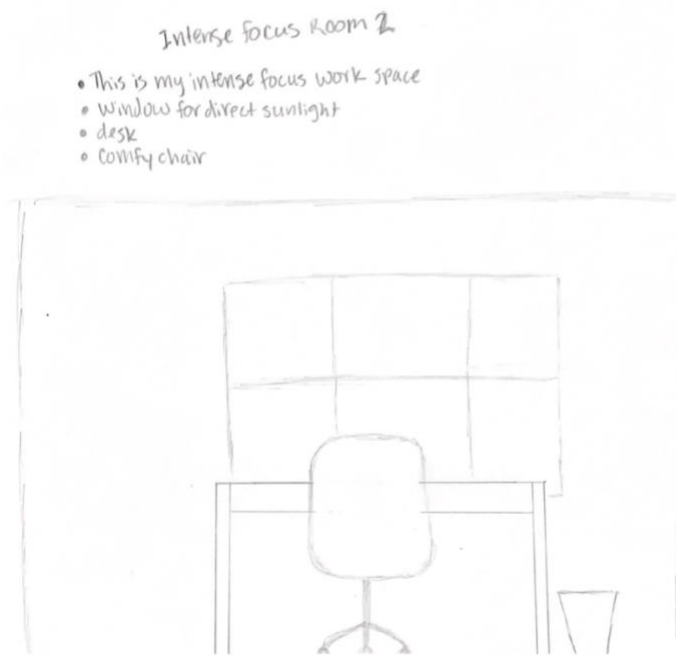
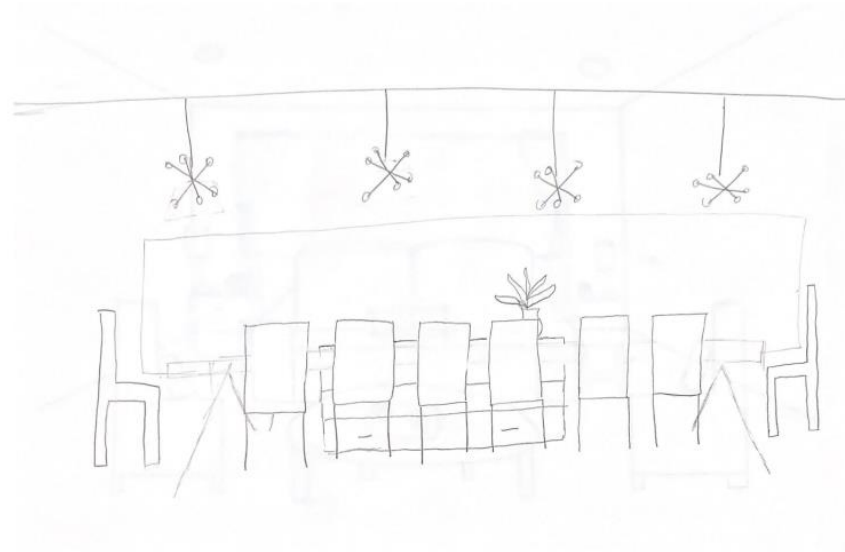


lounge



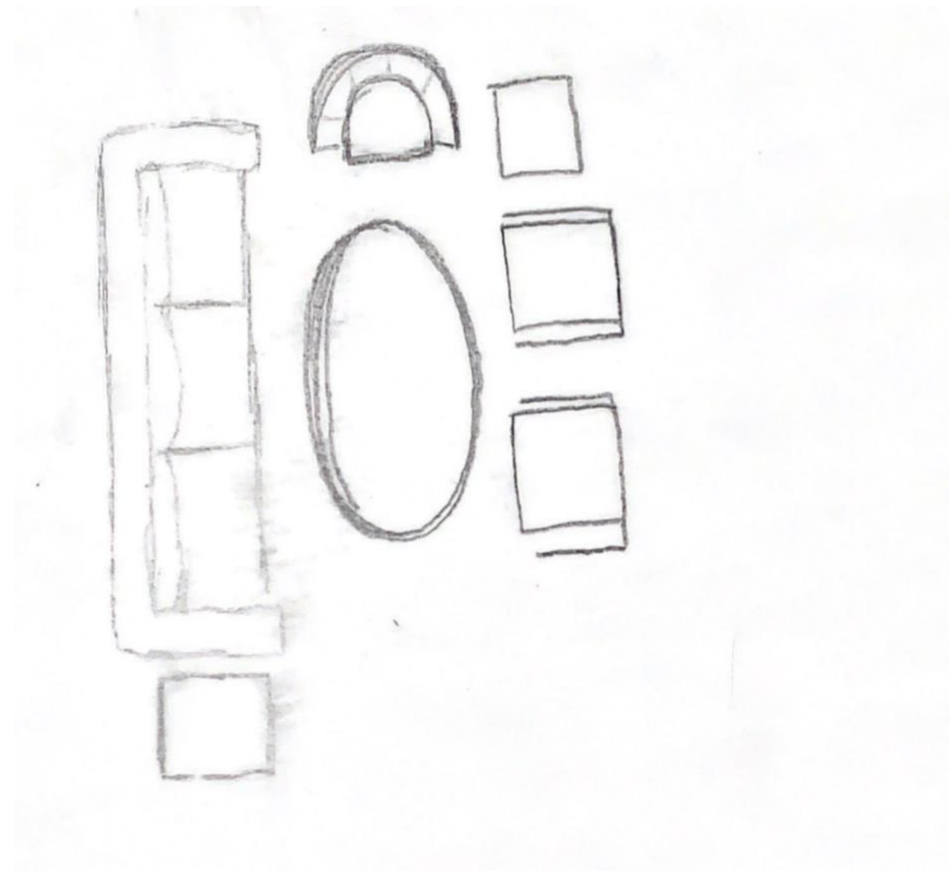
Assignment 5

Perspective

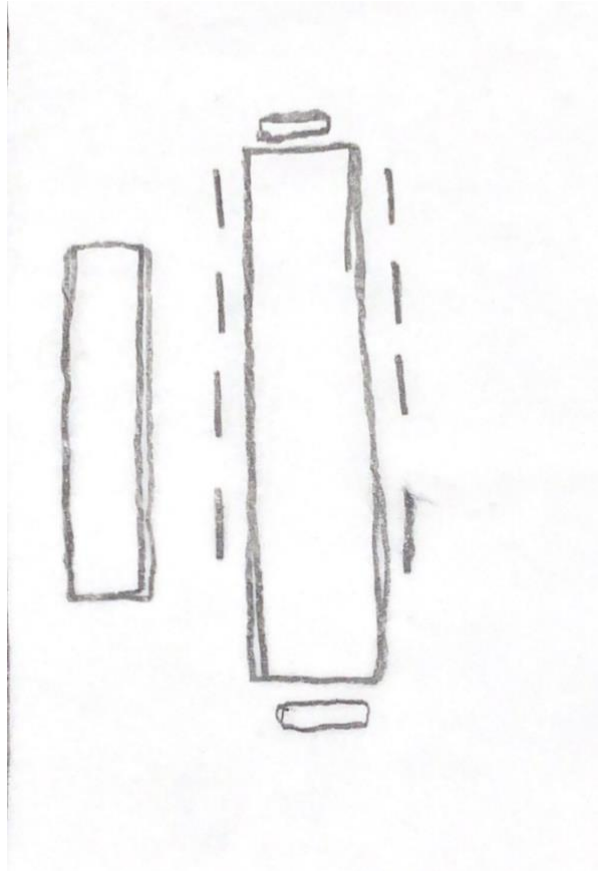


Assignment 5

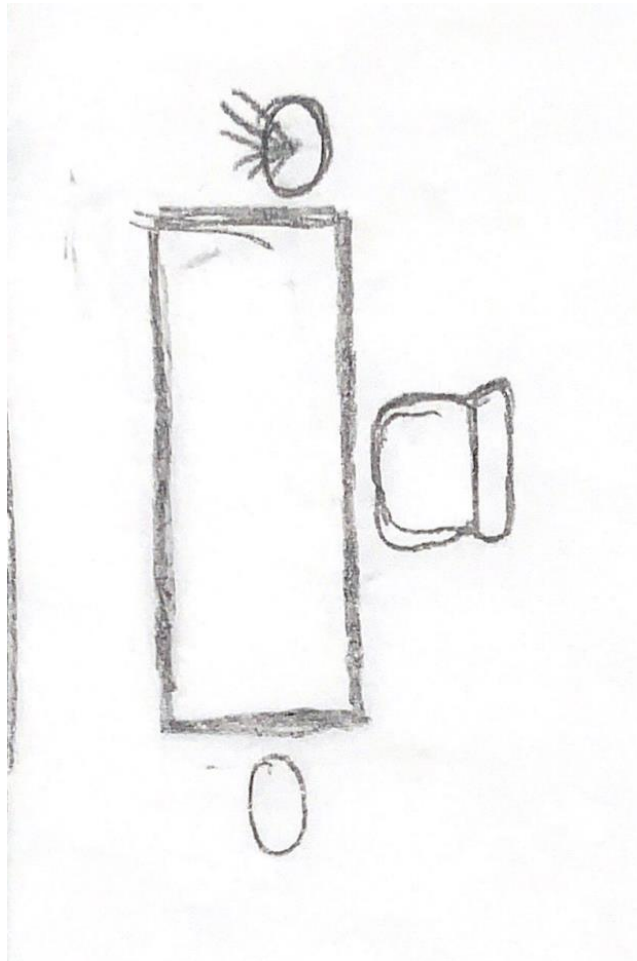
Plan



Lounge



Meeting room



Workspace

## Assignment 5

### Work cited

Mansson, Hanna. "The History of the Office: Office Trends through the Centuries." *HubbleHQ*, [hubblehq.com/blog/the-history-of-the-office](https://hubblehq.com/blog/the-history-of-the-office).

*Greenville, North Carolina*, [www.carolana.com/NC/Towns/Greenville\\_NC.html](http://www.carolana.com/NC/Towns/Greenville_NC.html).

"Greenville, NC." *Historic Properties | Greenville, NC*, [www.greenvillenc.gov/government/planning-and-development-services/historic-preservation/historic-properties](http://www.greenvillenc.gov/government/planning-and-development-services/historic-preservation/historic-properties).

