

Portfolio 1

Madigan Stockwell

IDSN 3102 Sec. 001

Fall 2021

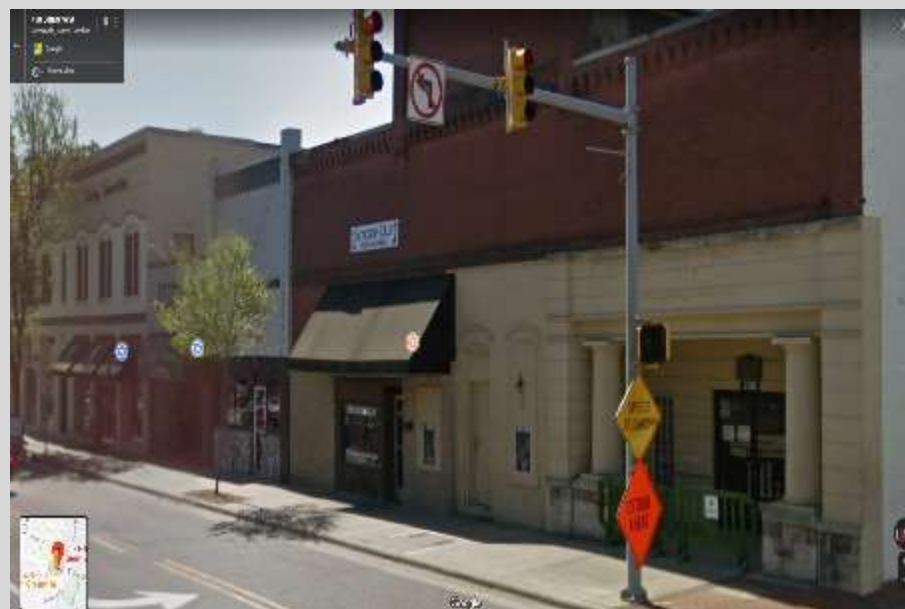
Stakeholder Profile

- Owner: CommunitySmith
 - Tenant utilizing and taking care of the space
- Clients: Herman Miller
 - Large increase in sales and profit with return of customers
- Users: ECU students, Greenville residents, employees, & customers
 - Sales and stylish furniture pieces






Site Profile

- 201, 203, 205 E Fifth St. Greenville, NC 27858
 - Intersection of Fifth St. And Cotanche
- 3,000 sq./ft. Available



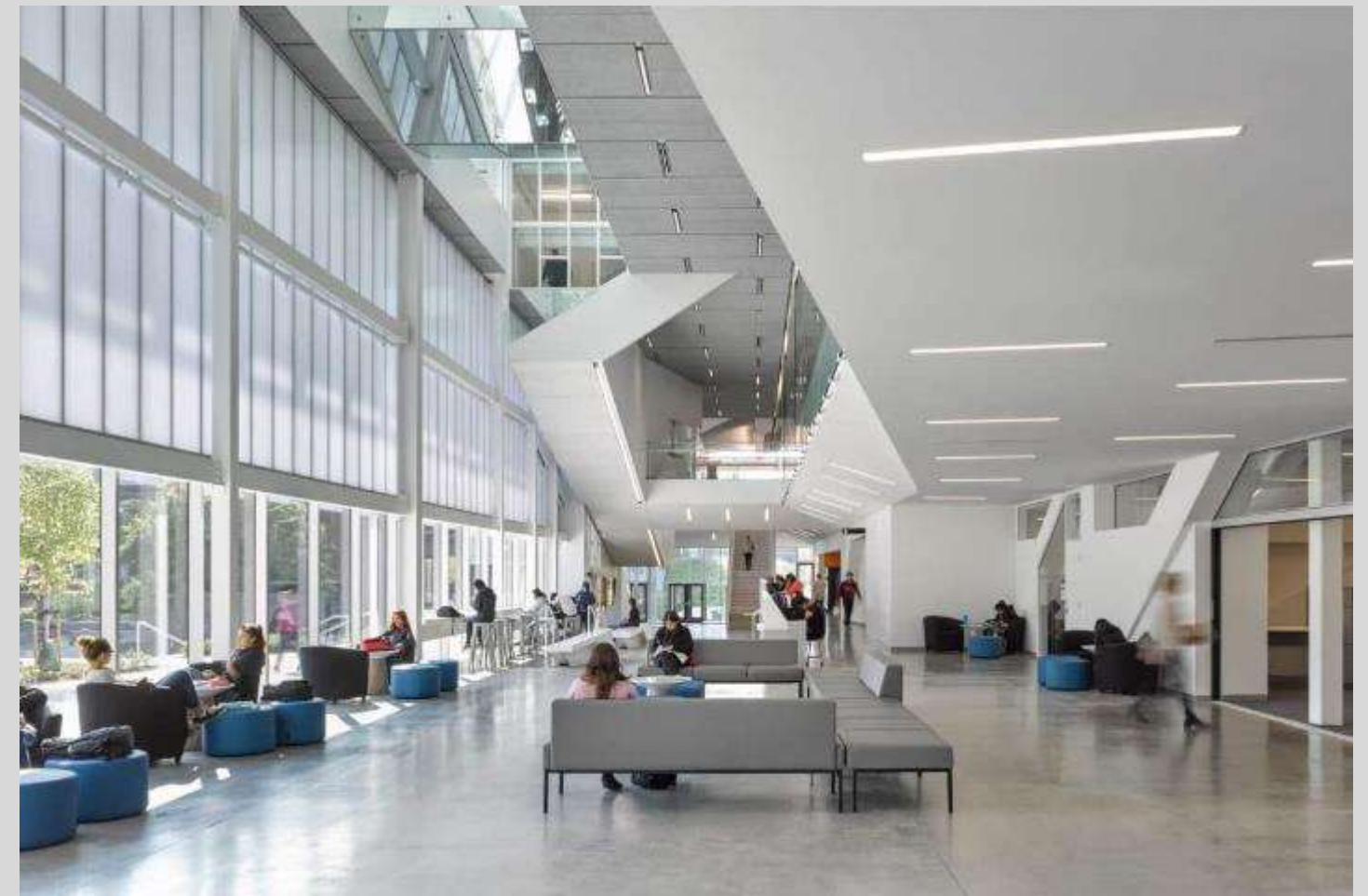
Site Analysis



-  Entrances
-  Morning Light
-  Afternoon/ Evening Light

Design Problem Statement

- Minimal natural light: only front windows
- Long, narrow space
- Urban location
 - Limited parking
 - Lots of foot traffic
 - Constant commuting of cars

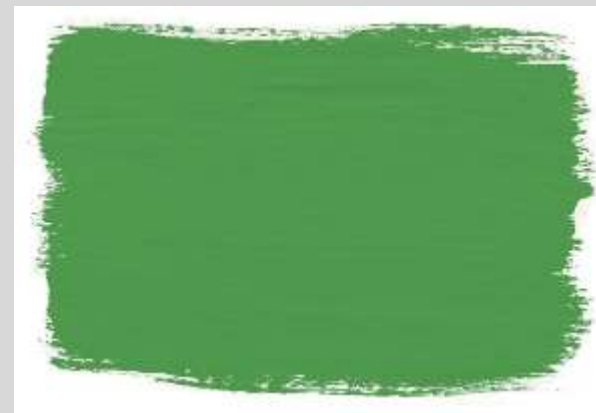


Research

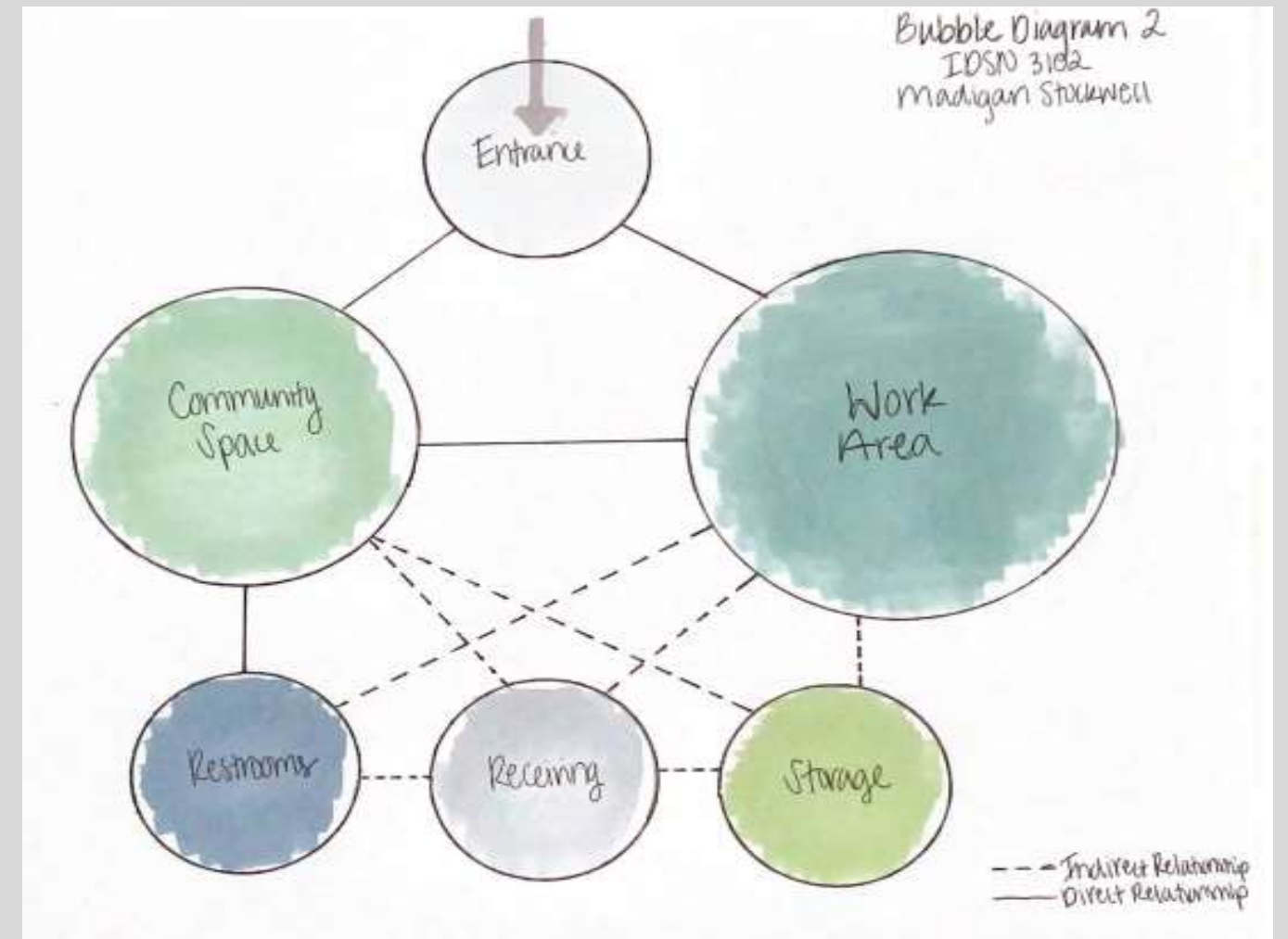
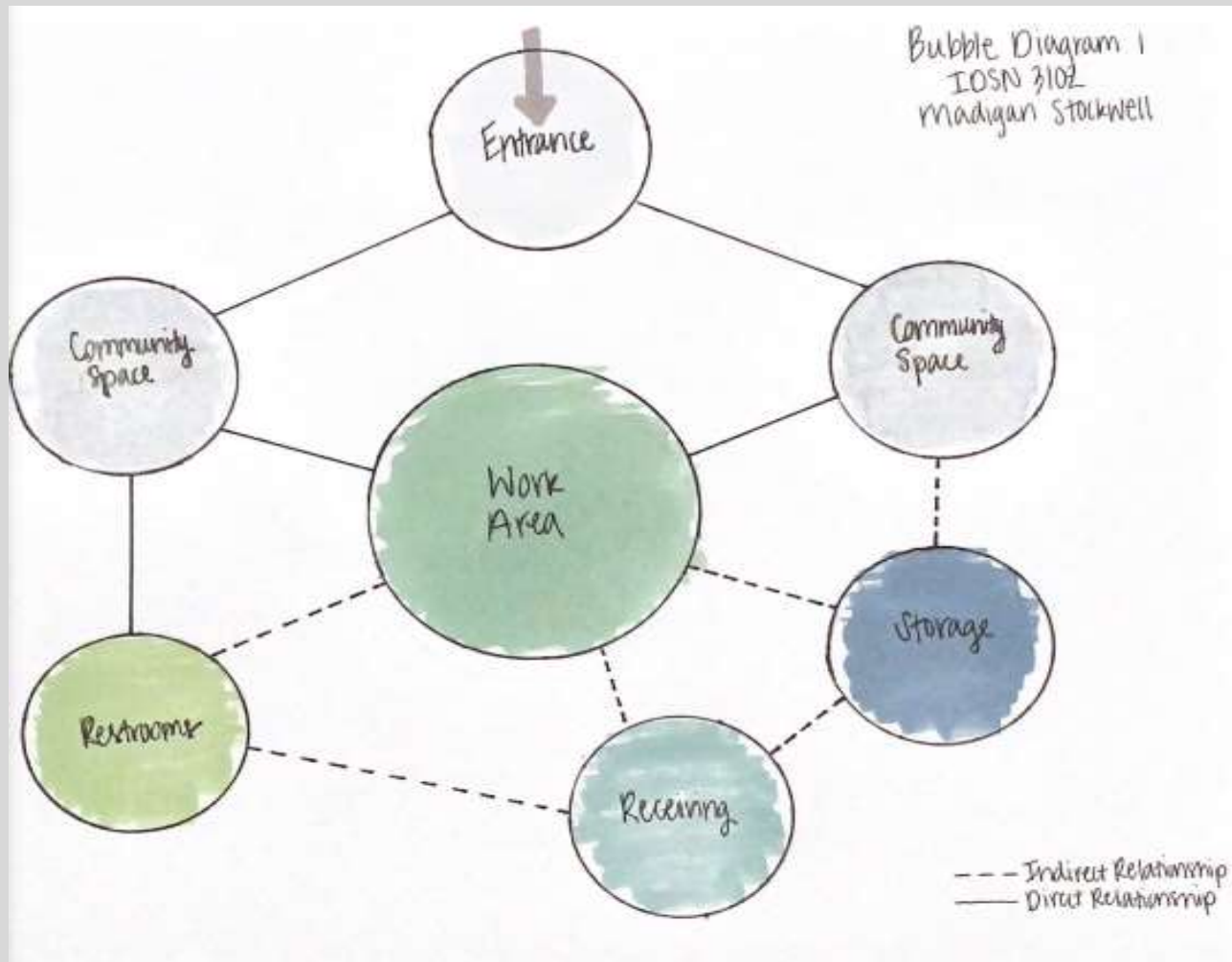
- What is the difference between universal and inclusive design?
 - Inclusive design tends to focus on a particular group of individuals and create solutions for the different diversities, whereas universal design aims to attract a global scale of individuals regardless of demographic.
 - <https://sayyeah.com/digital-insights/universal-design-accessibility-inclusive-design/>
- ADA regulations and protocol
 - Passageways and doors must meet the minimum 36" wide.
 - Restrooms require 30" to 48" to access the sink without door swing interference.
 - Sinks cannot exceed 34" high but require a minimum of 27" high and 30" wide for knee clearance.
 - For the wheelchair to turn completely, 60" is required for the individual to have clear access.
 - The toilet seat needs to sit between 17-19" high.
 - Grab bars need to be placed 1.5" from the wall and have a 1.25" grip.
 - <https://www.buildings.com/articles/33806/ada-compliant-restroom>
- Workplace/ Social Behavior
 - Communication is key for employees to interact with customers.
 - Clean workspaces to stay organized
- Greenville Codes
 - Fire lanes must be readily available in front of the building.
 - Alarm systems must be connected directly to the city alarm system to respond accordingly.
 - https://library.municode.com/sc/greenville/codes/code_of_ordinances?nodetid=COOR_CH18FIPRPR
 - Historic Buildings must be preserved as a government building to the city.
 - Additional building must be approved by the federal government of the state.
 - <https://www.ncdcr.gov/about/history/division-historical-resources/nc-state-historic-preservation-office>
- Sustainability in Interior Environments
 - Importance of long-term materials
 - Preserving the environment is important to evolve design concepts.
 - Lower energy materials increase durability and create a healthier environment.
 - <https://ehp.niehs.nih.gov/doi/10.1289/ehp.8988>
- Showroom Design
 - Universal design that accommodates a wide range of individuals.
 - Bright and clean for users.

Concept/ Inspiration Images

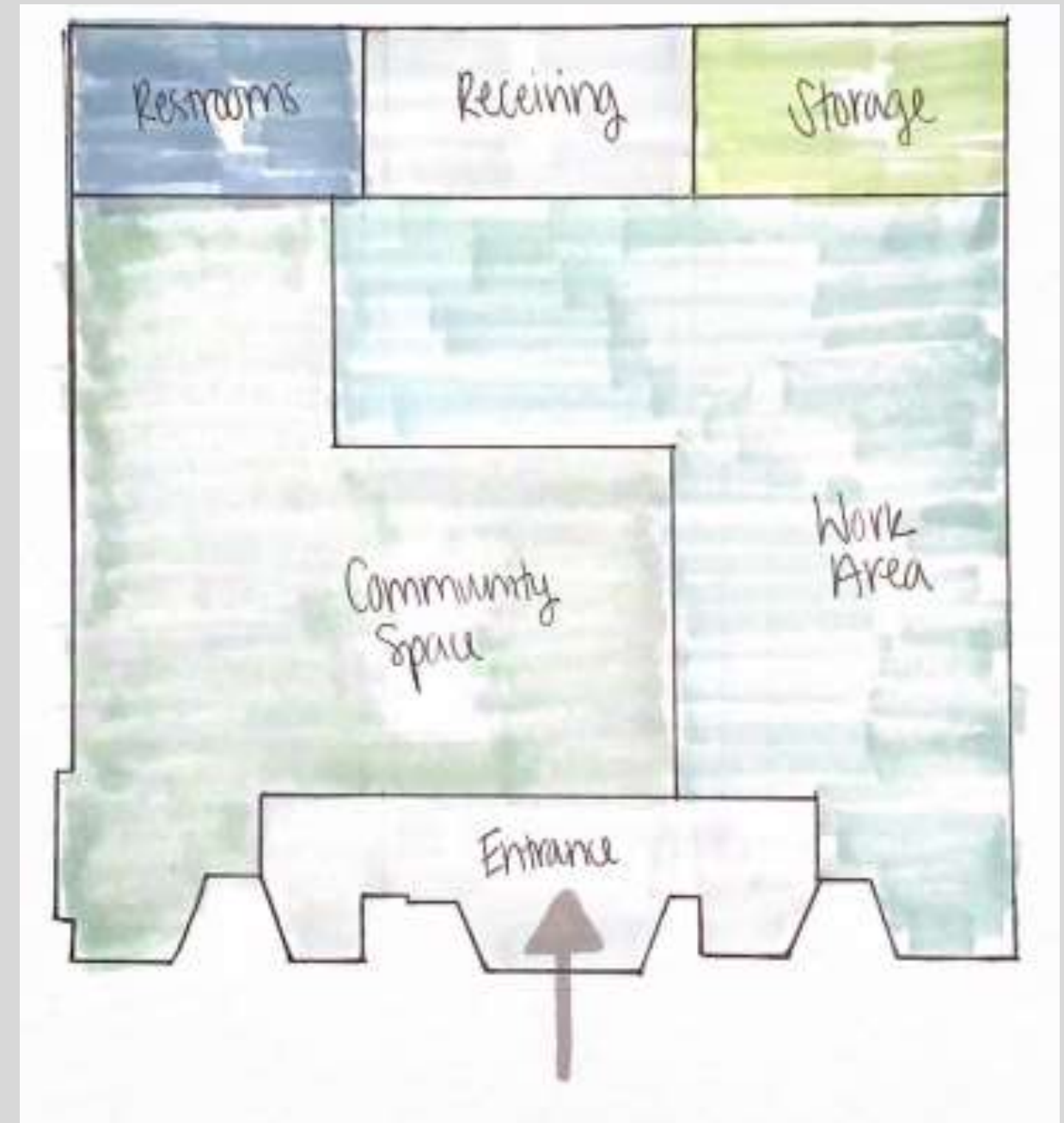
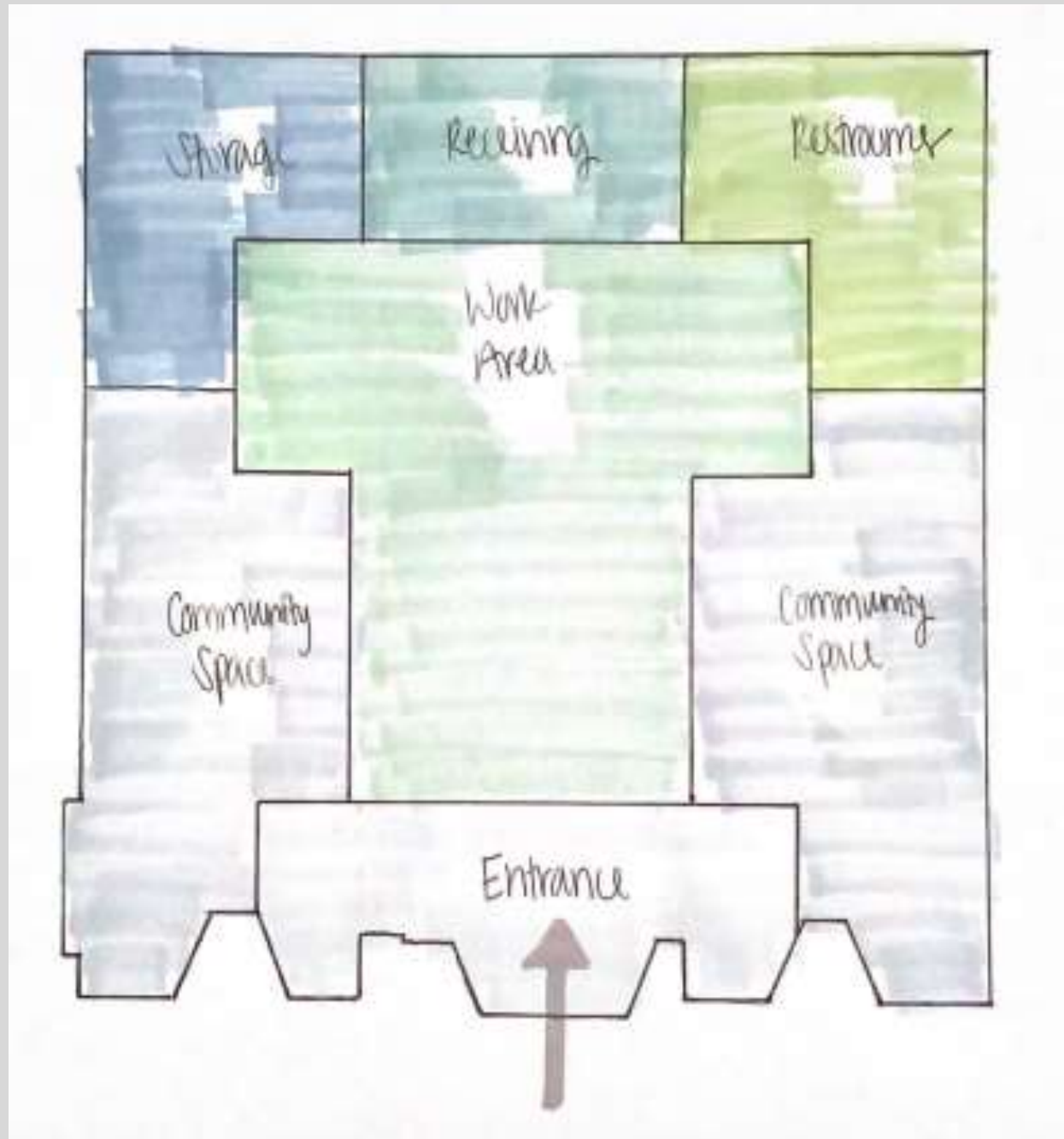
- Bright, neutral colors, clean look
- Pops of color to provide visual interest
- Spacious, yet full of a variety of products
- Breath of fresh air feel, very tranquil



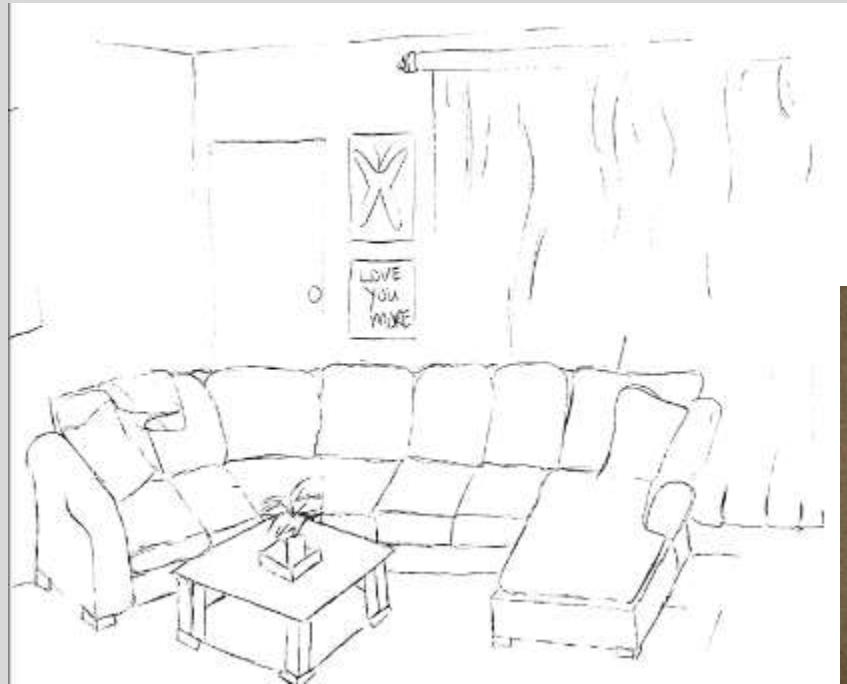
Bubble Diagrams



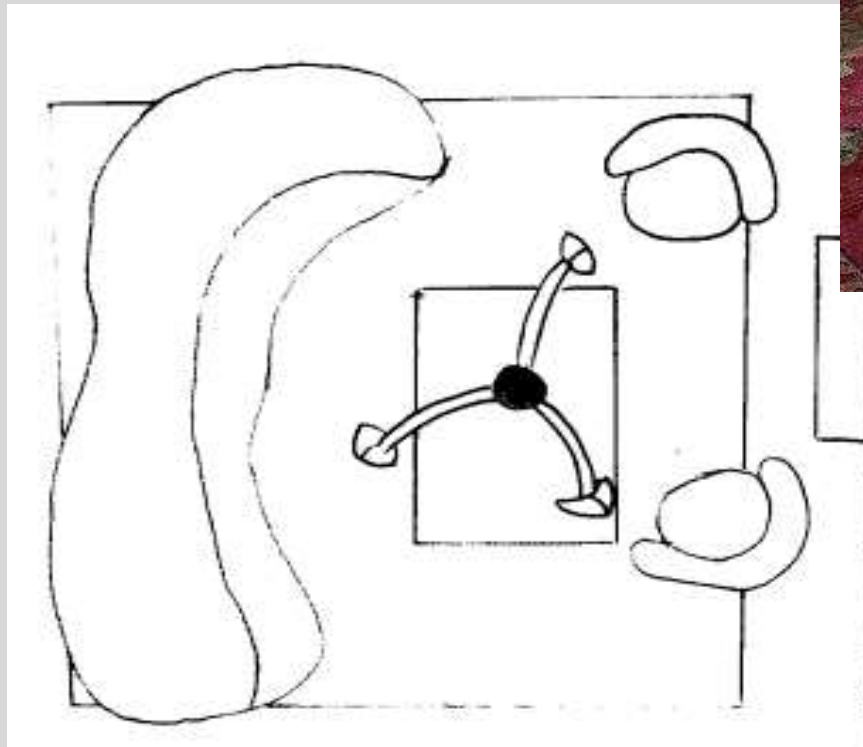
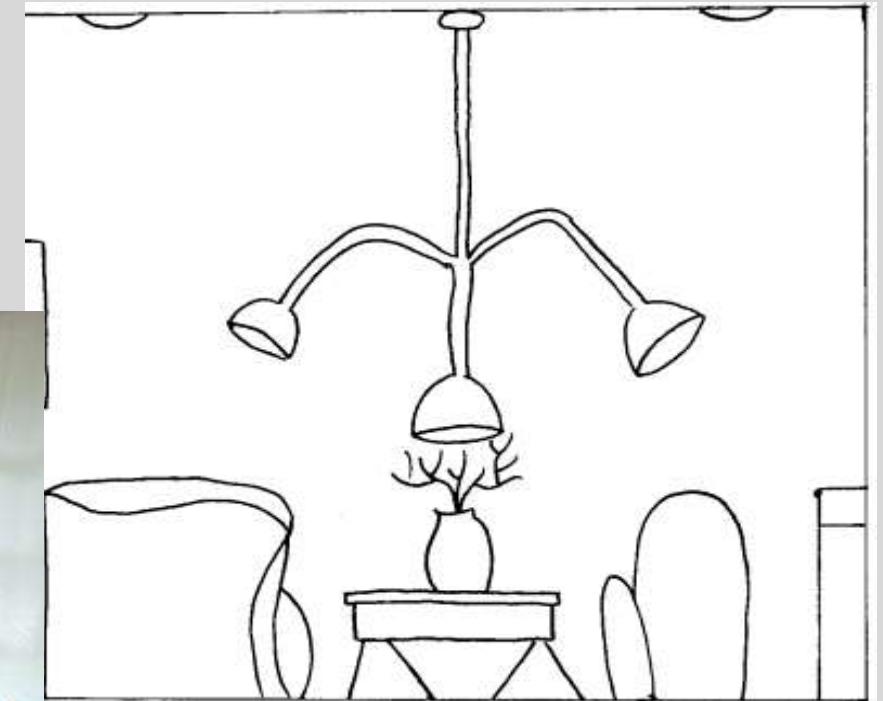
Blocking Diagrams



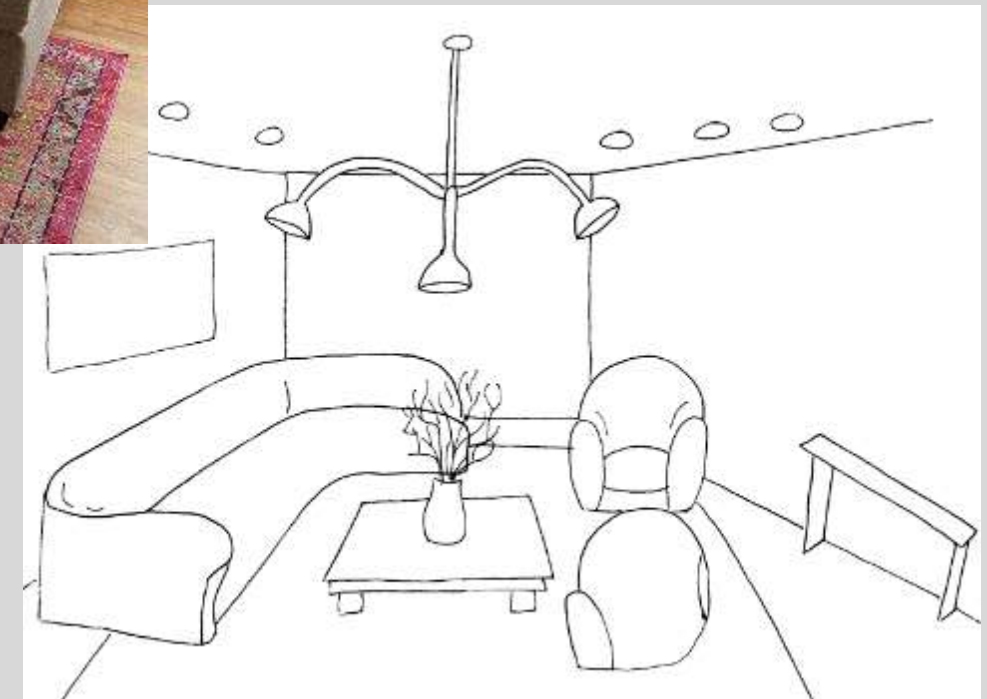
Existing and Ideal Activity Spaces-A5



- Socializing
- Ample seating to accommodate large groups
 - Lots of windows to provide natural light



- Socializing
- Use spotlights to emphasize the space
 - Place seating to create an enclosed and private arrangement



Existing and Ideal Activity Spaces-A5

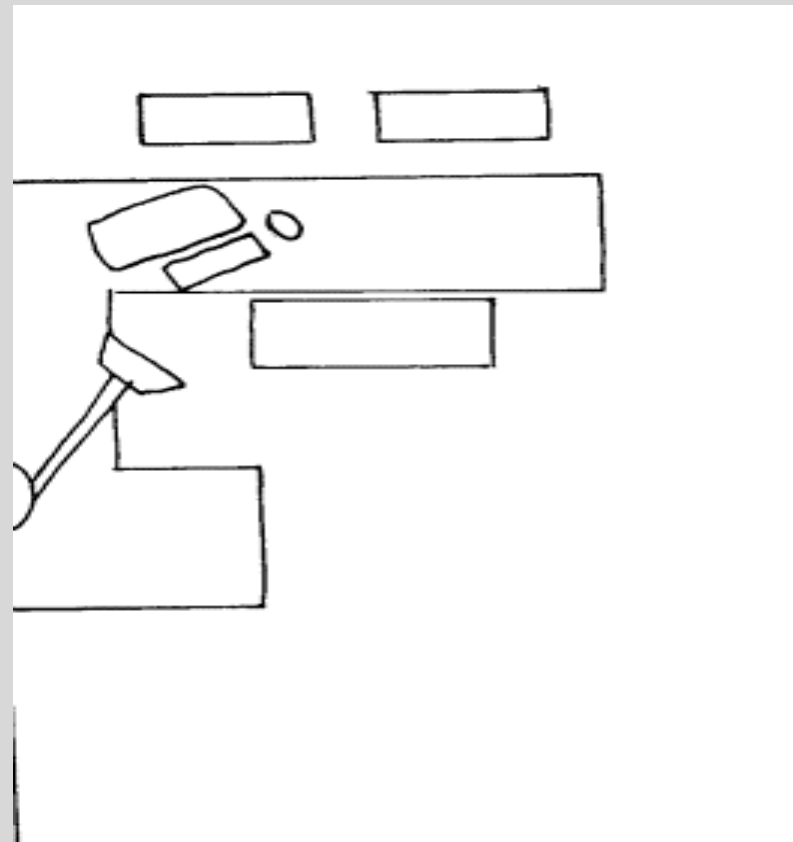
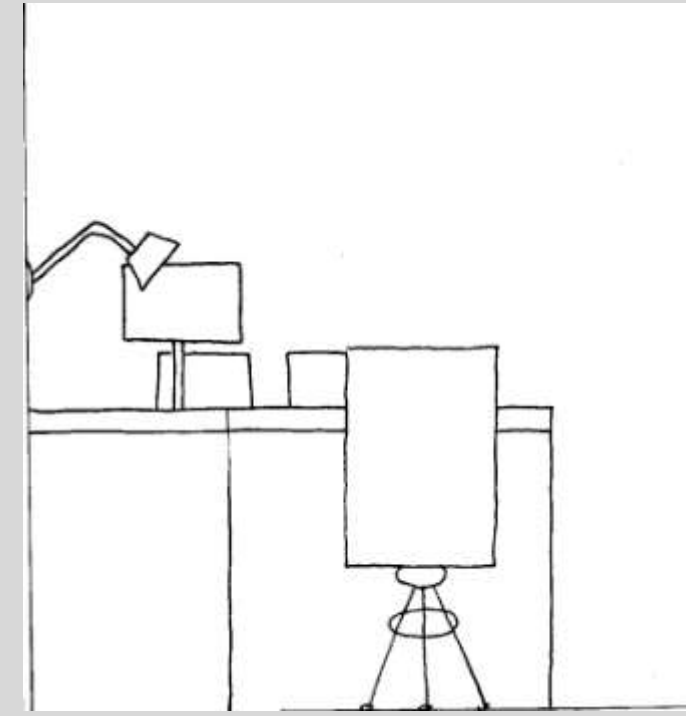
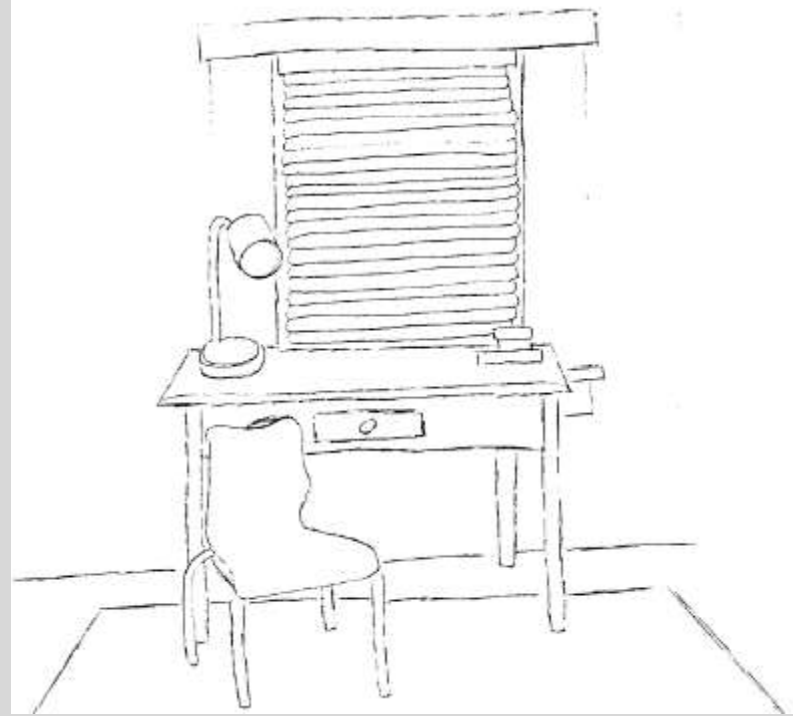
Intense Focus

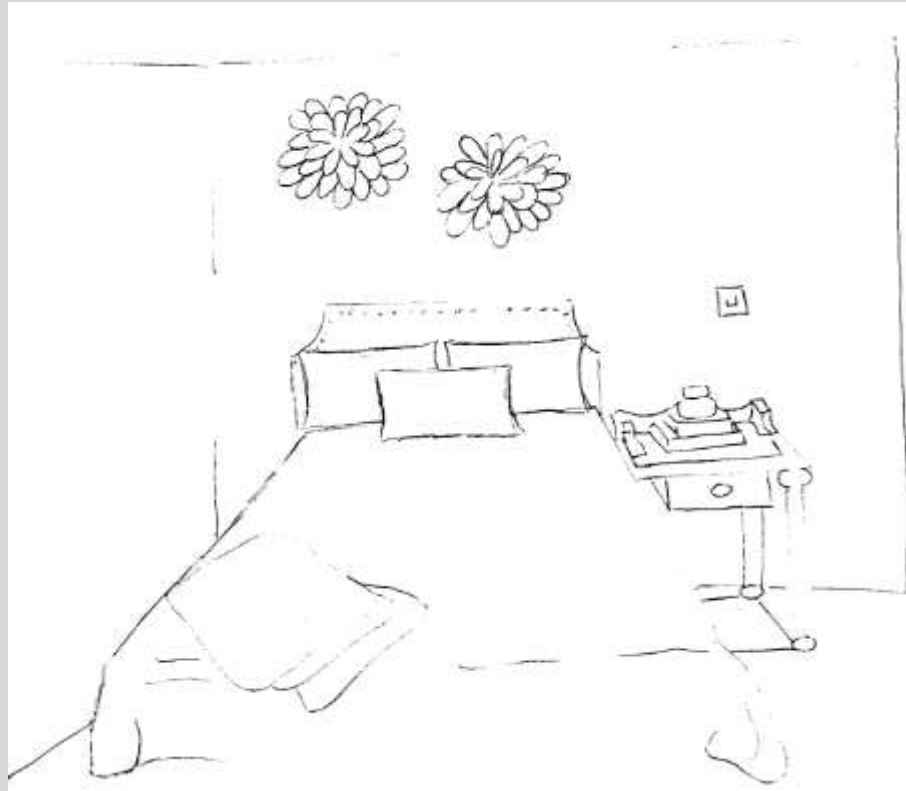
- lots of natural light to focus on work
- ample desk space to feel organized
- secluded to accomplish tasks



Intense Focus

- Modern, industrial furniture
- Recessed lighting to provide openness





Daydreaming

- Sketching, working, relaxing in the comfort of a personal space



Daydreaming

- Peaceful and secluded
- Natural light to focus on activities
- Relaxing and comfortable

