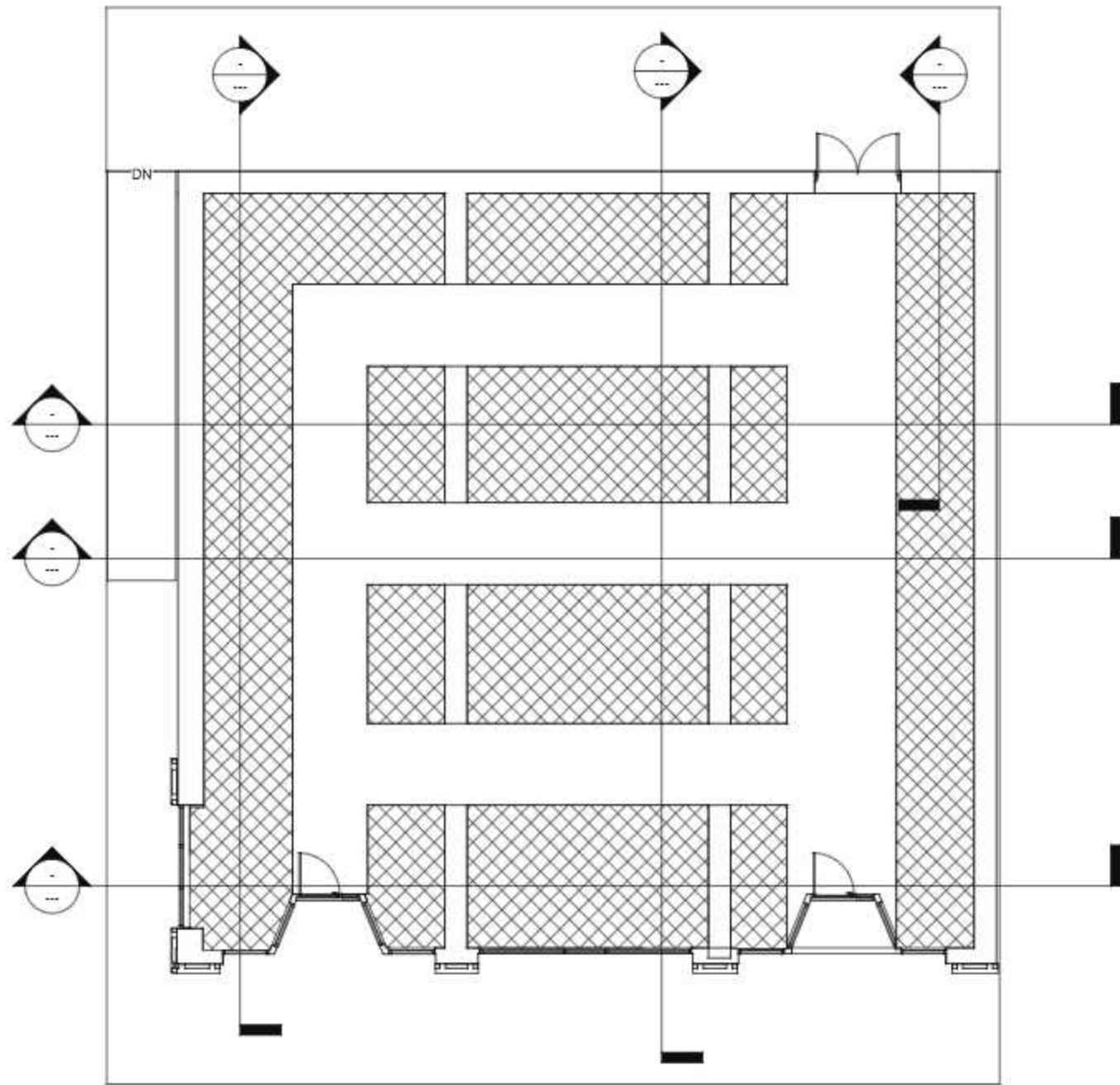
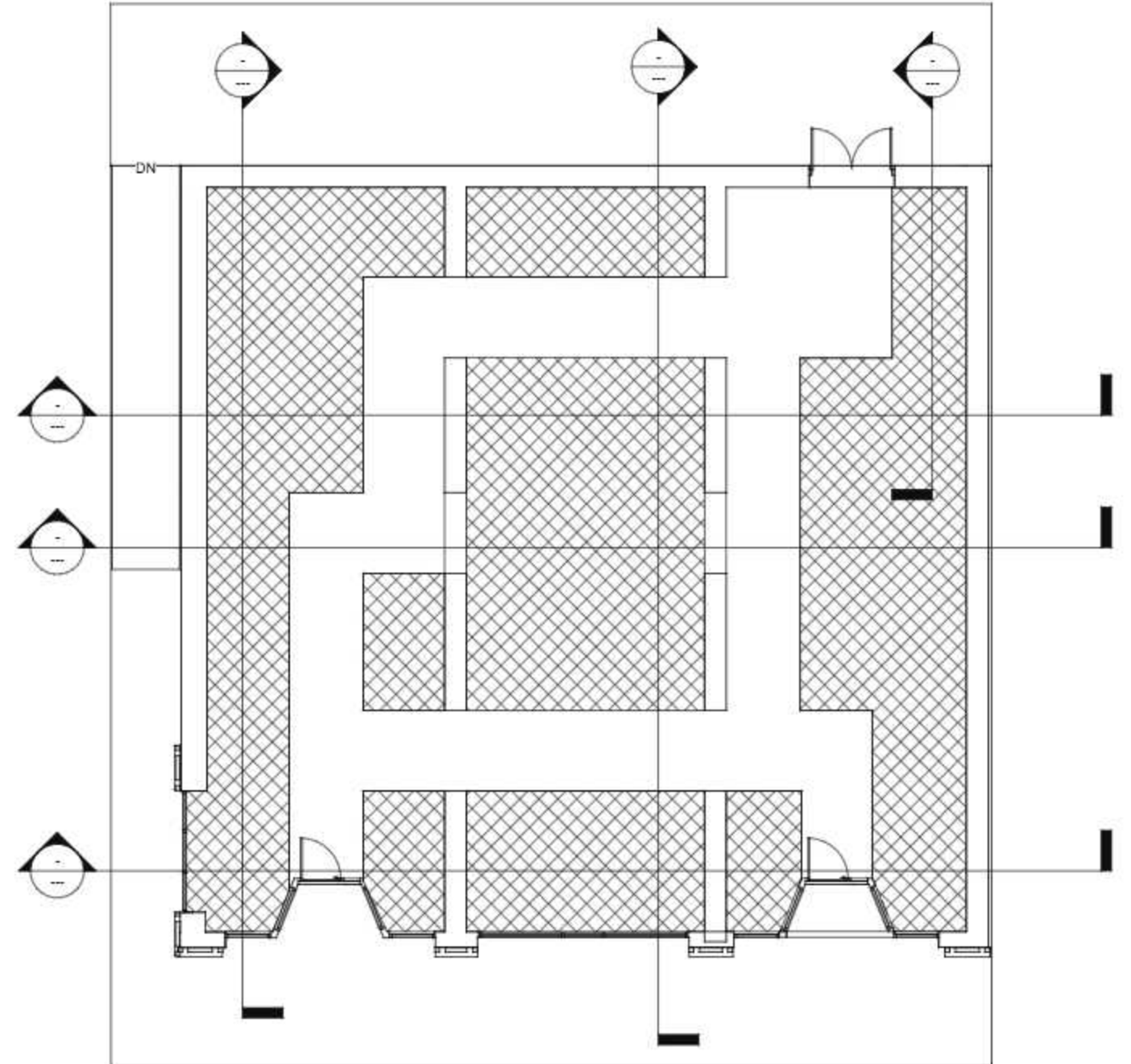


# Circulation Plans

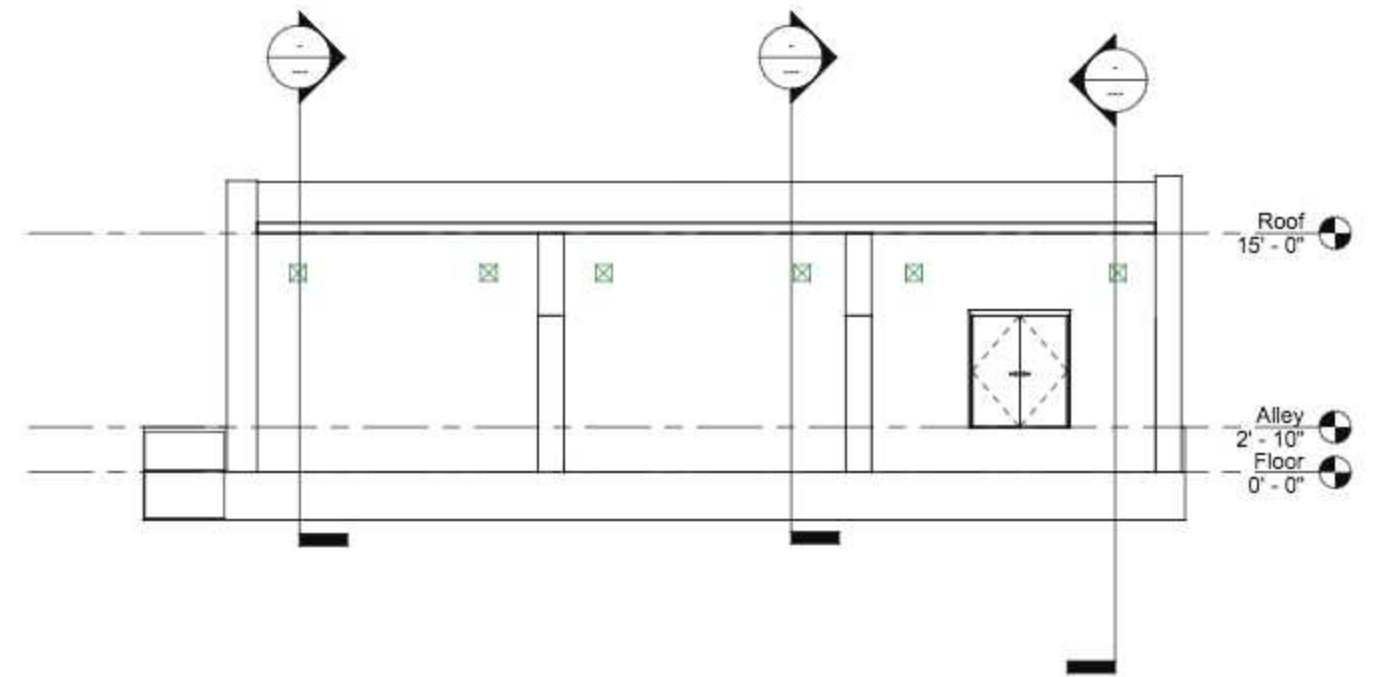
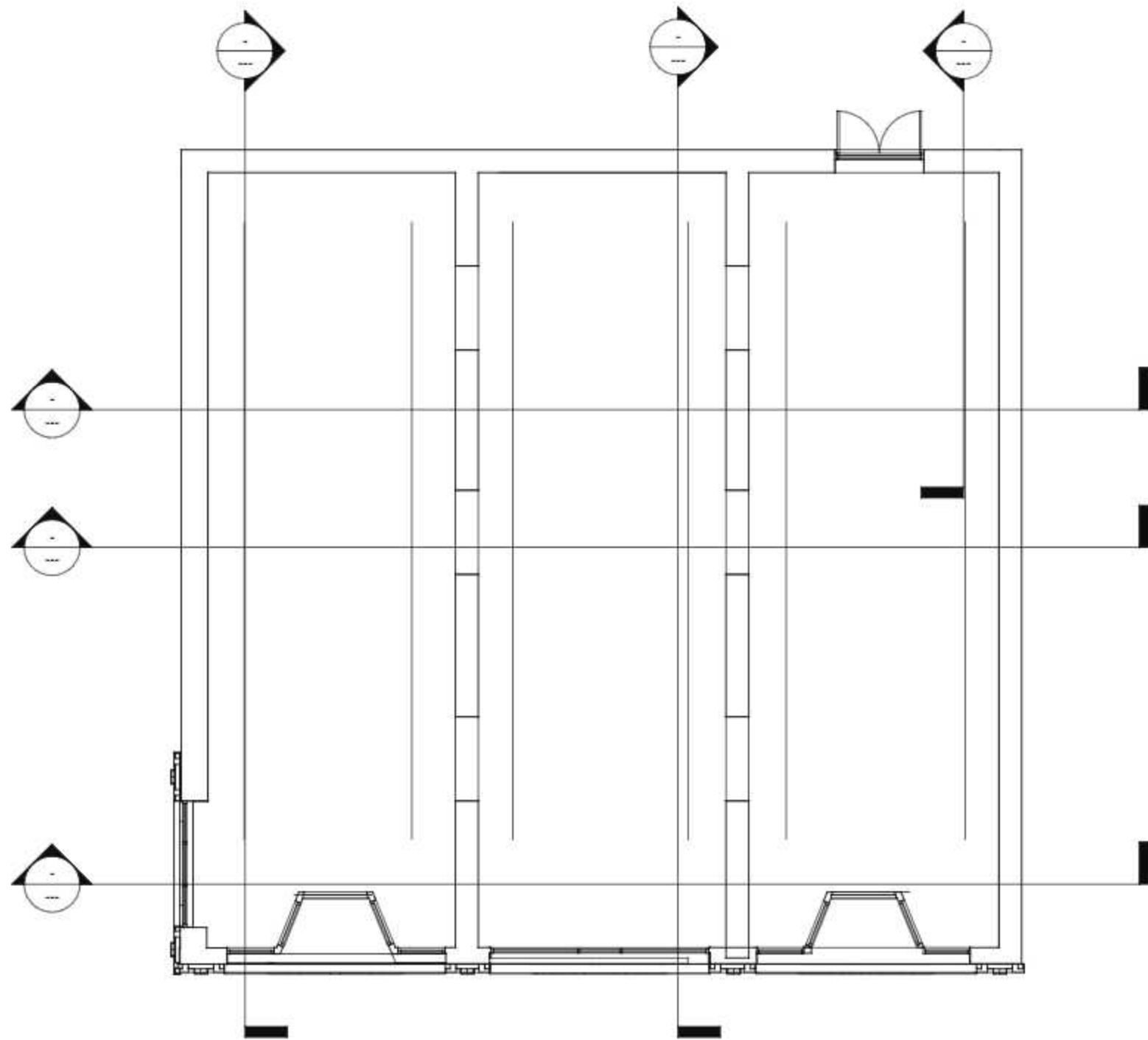
Option One



Option Two

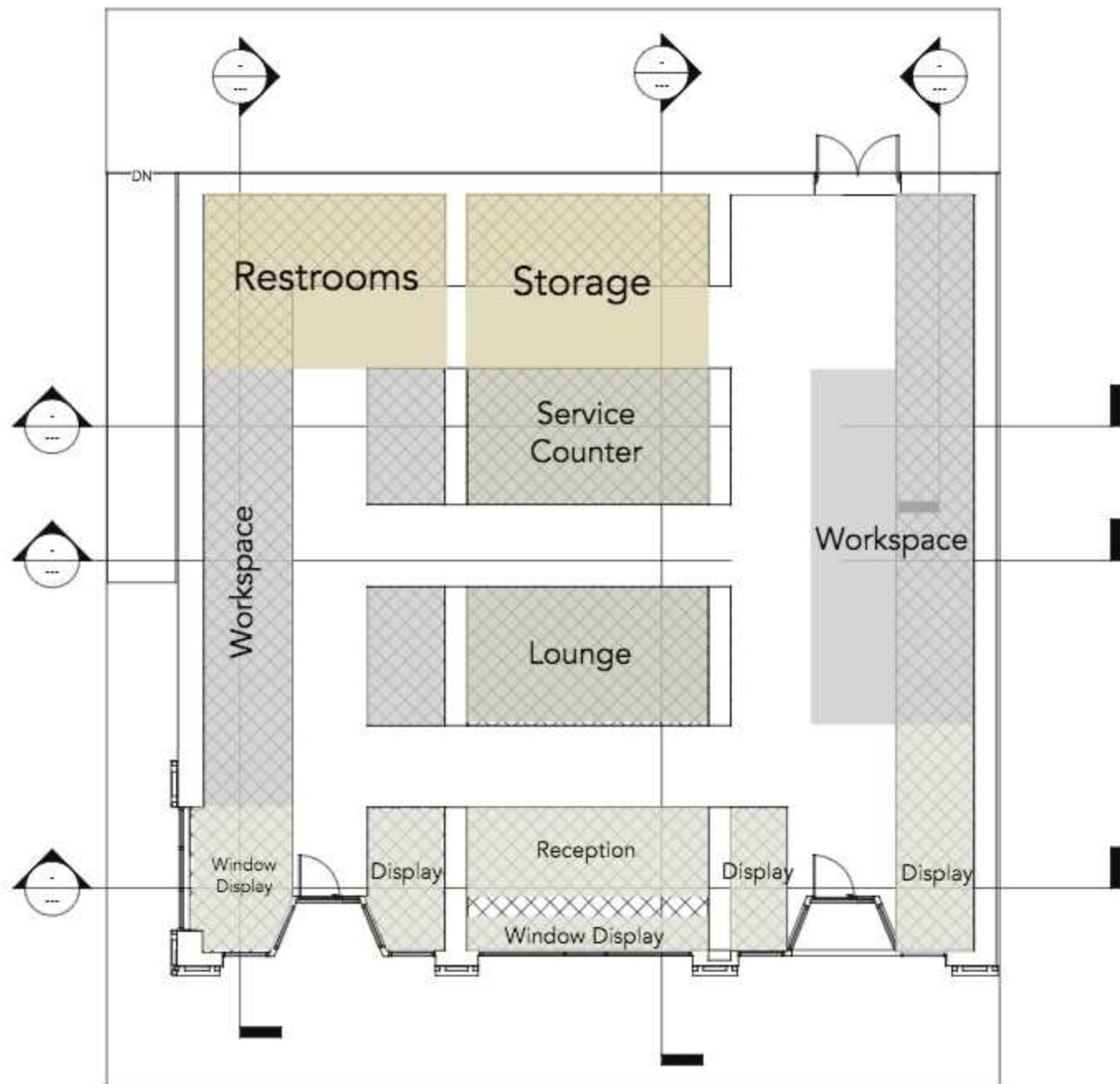


# Ductwork Locations

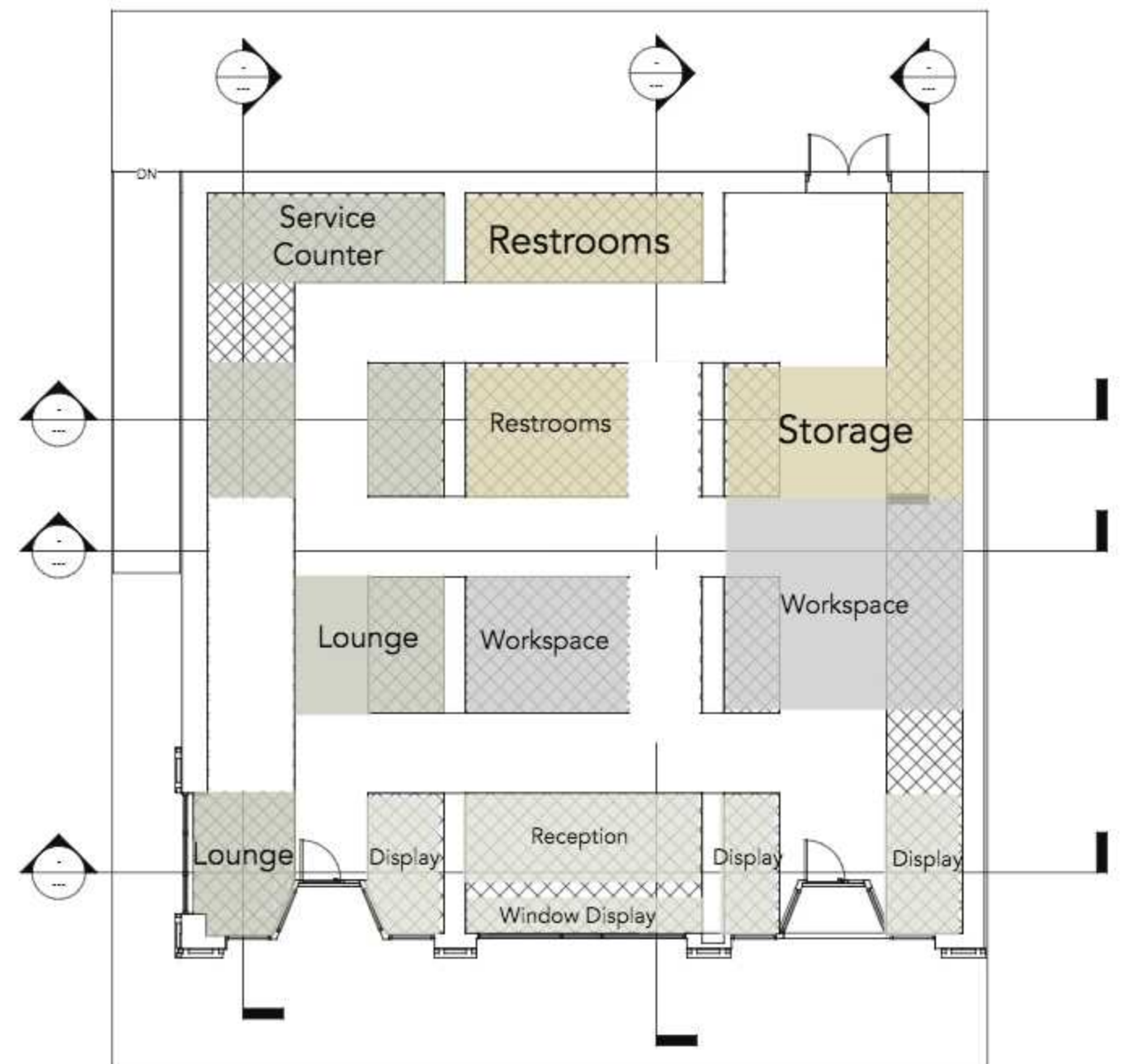


# Space Plan Sketches

Option One

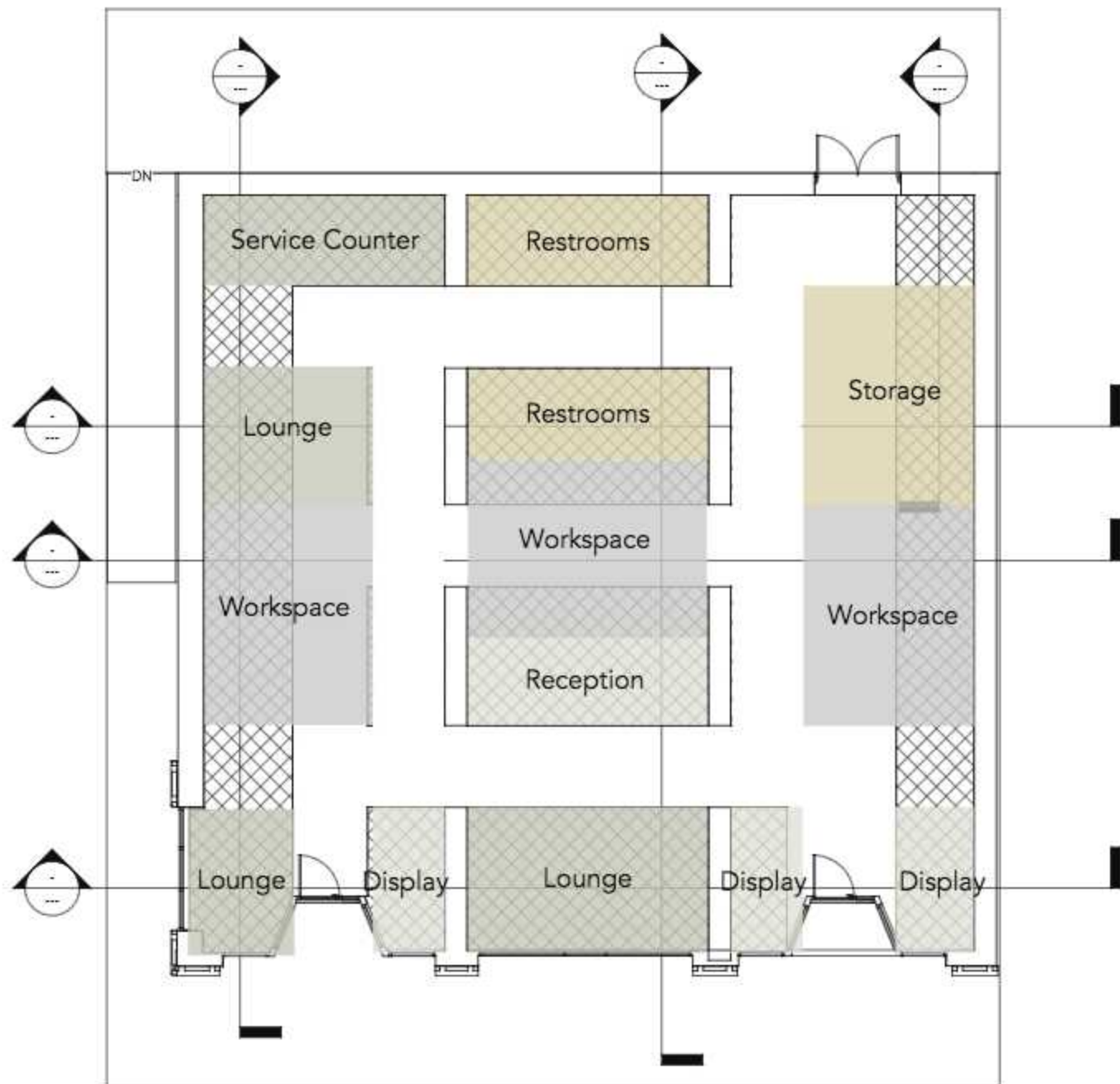


Option Two

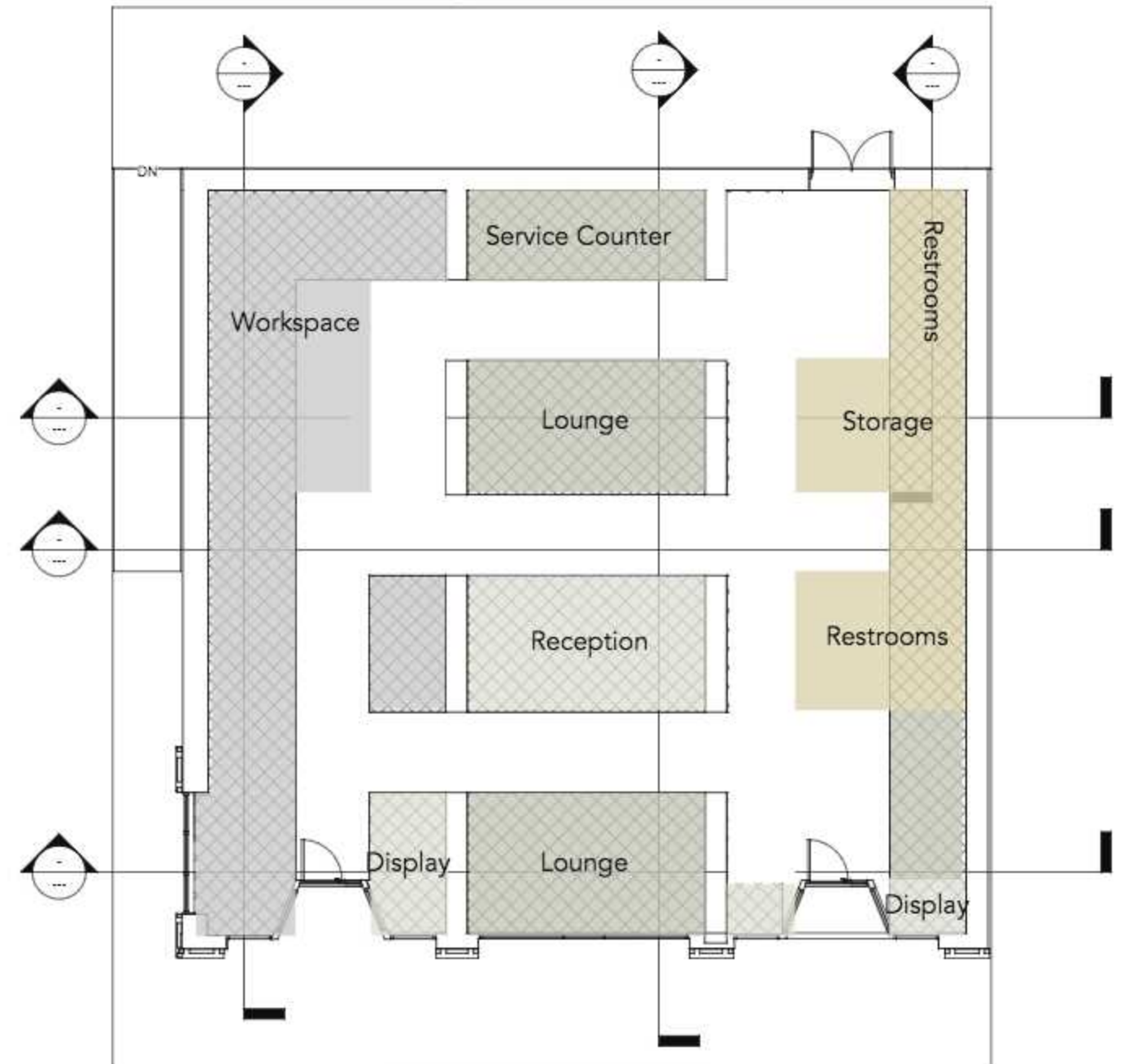


# Space Plan Sketches

Option Three

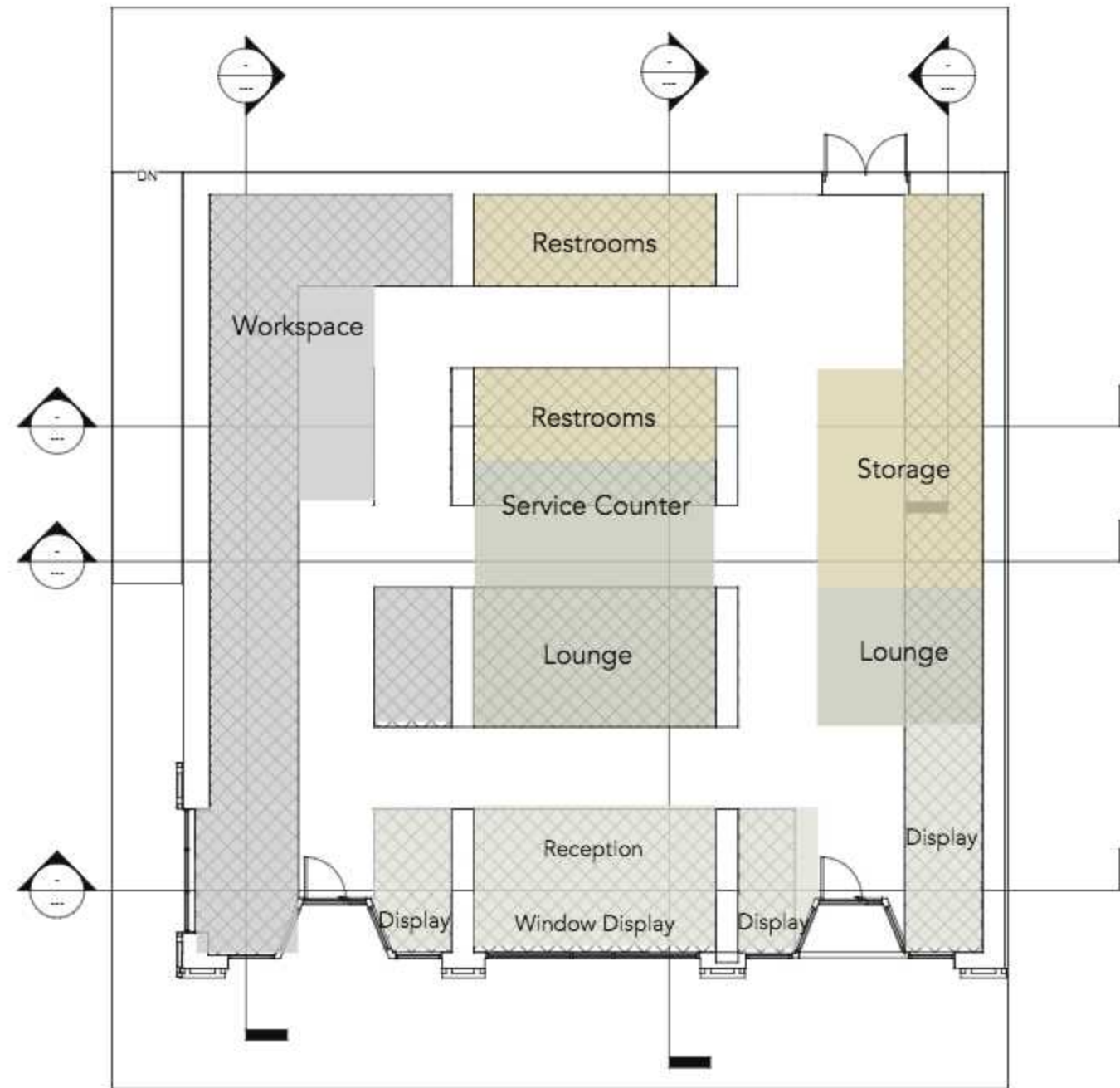


Option Four



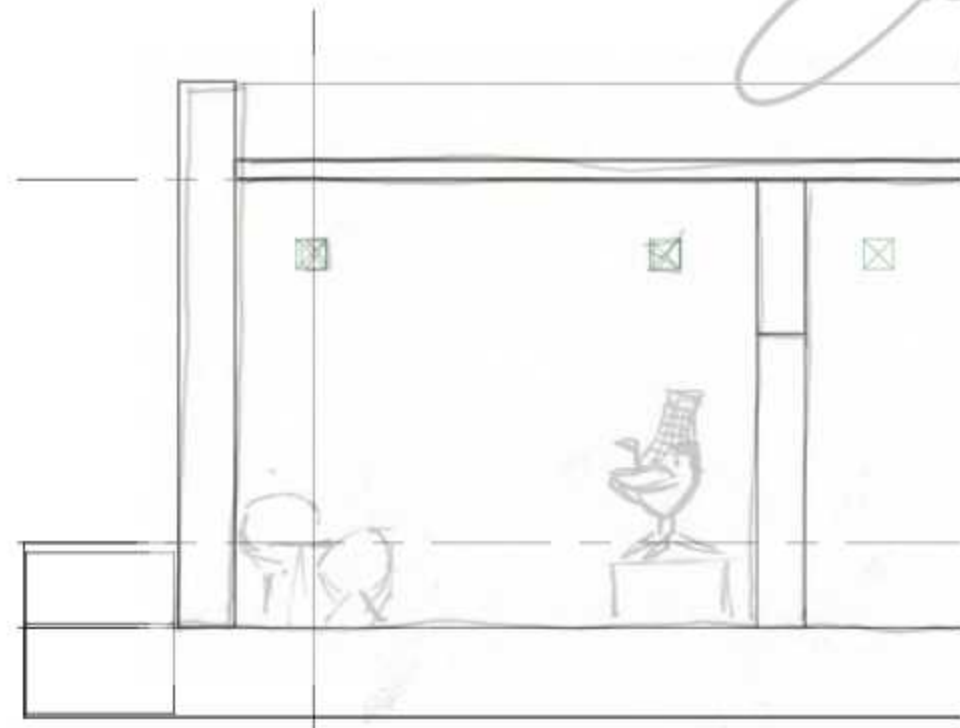
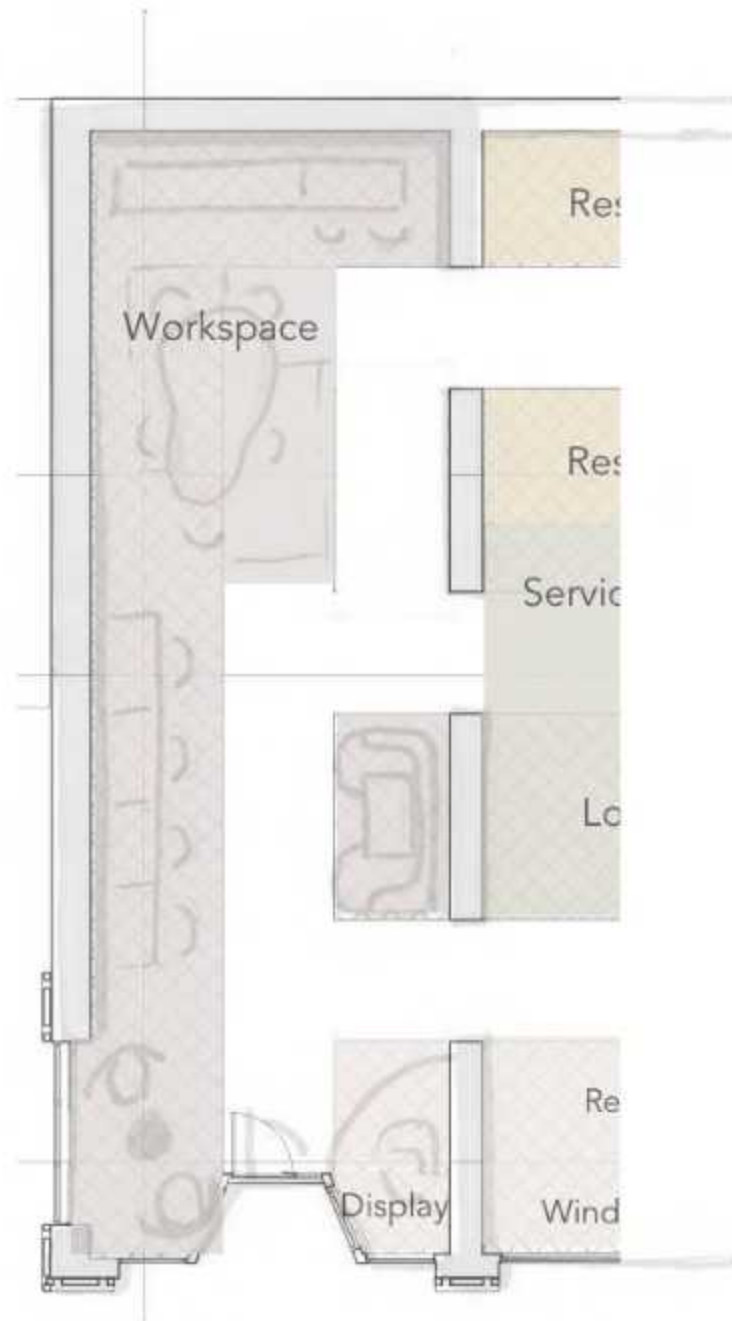
# Space Plan Sketches

Option Five



# Problem Resolution Studies:

## Exploration

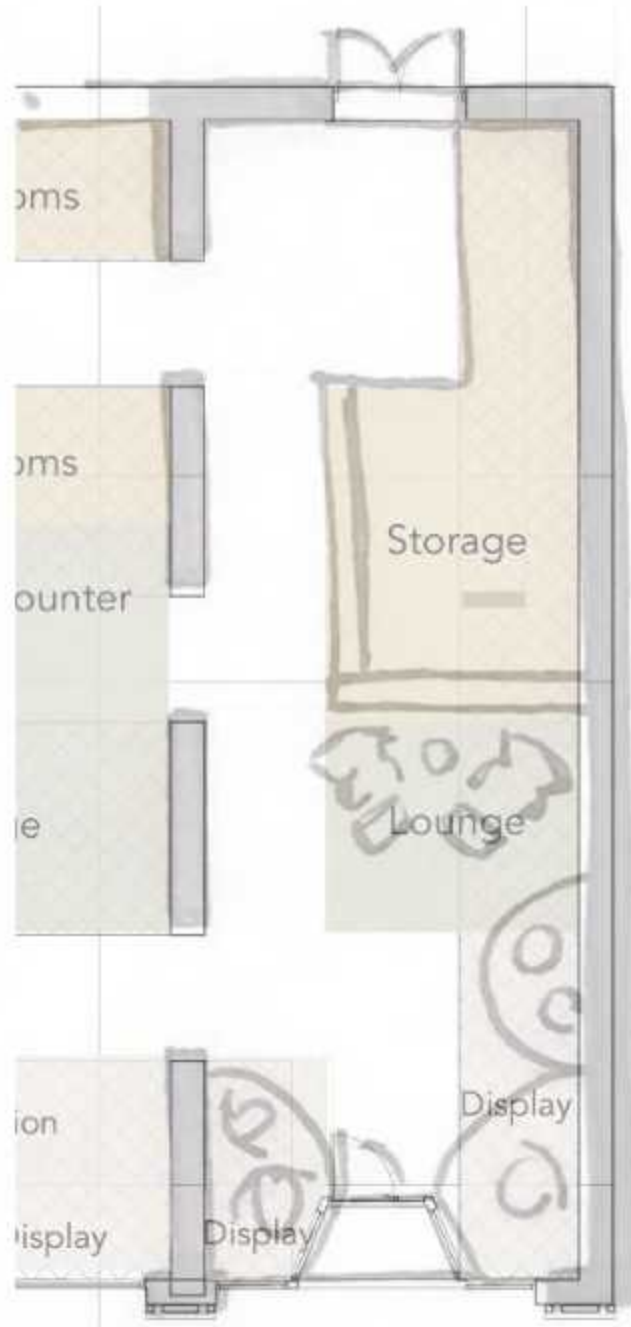


**Solution One: Left Entry**  
A clear path and open floorplan with a variety of workspace seating. An open floorplan allows customers to see to the back of the space and invites them to explore.

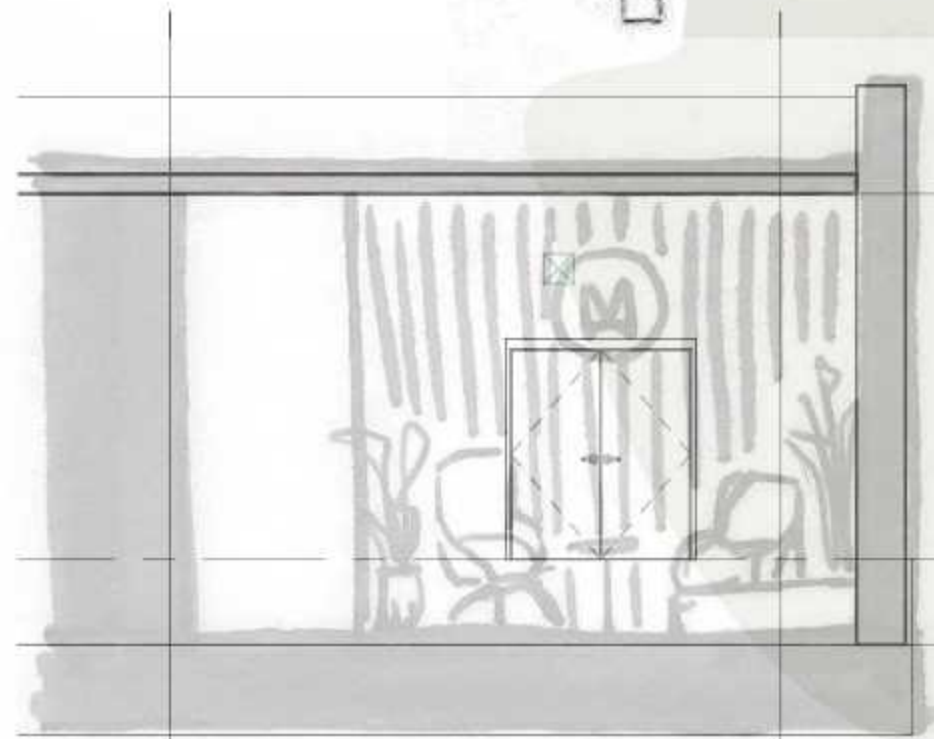


# Problem Resolution Studies:

## Exploration

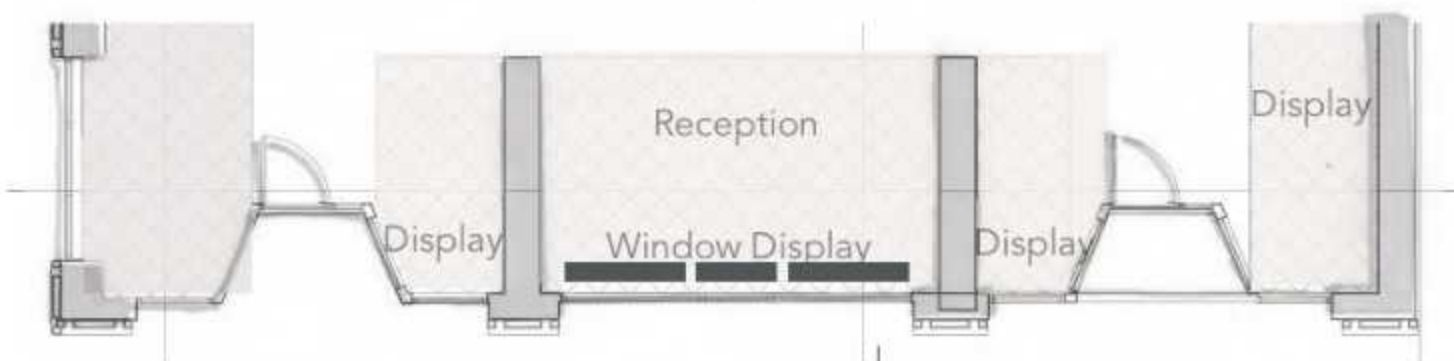


**Solution Two: Right Entry**  
A fun mix of display and lounge seating create an inviting entryway into the space. A logo wall sets the tone for the space and gives customers a transition space between outside and in.

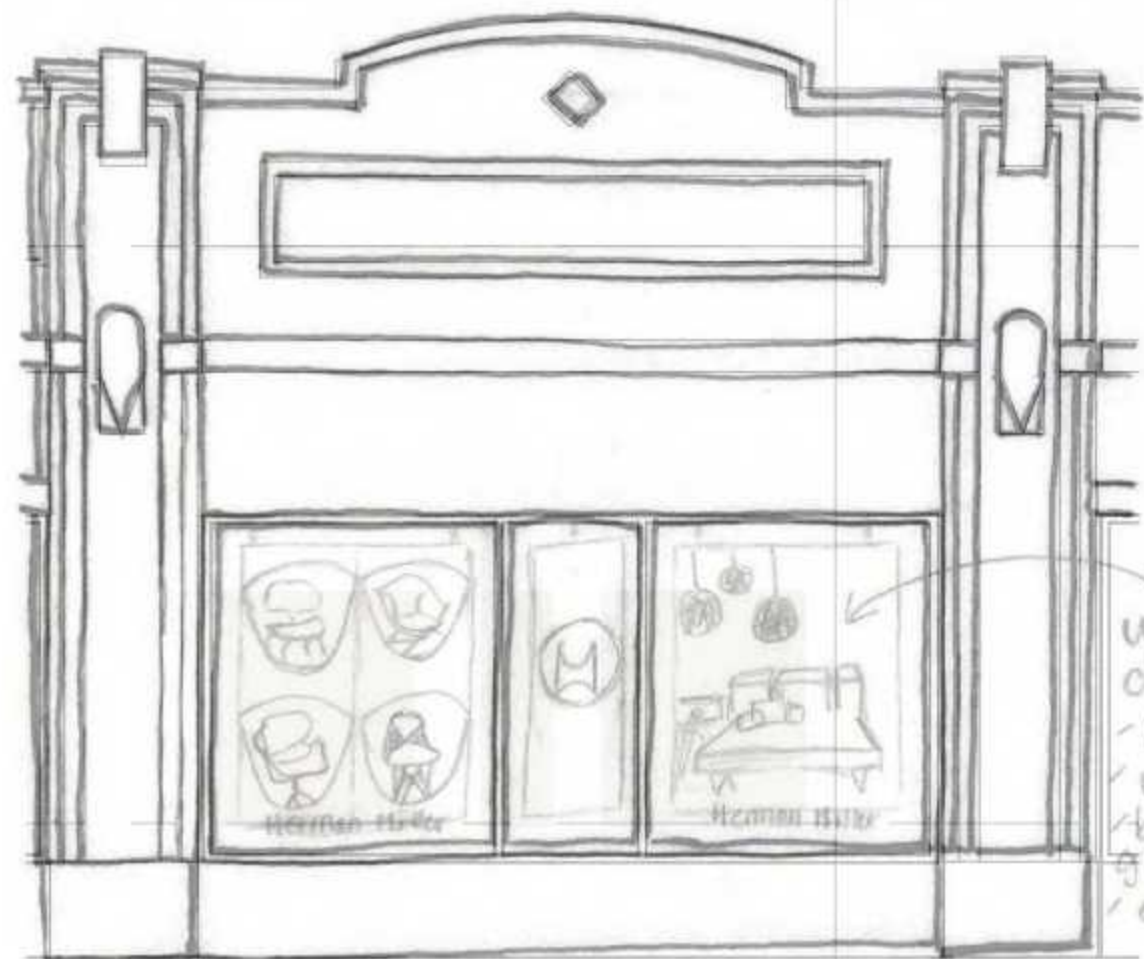


# Problem Resolution Studies :

Entry



**Solution One: Center Window Display**  
Digital display screens allow for various advertisement methods and lead customers in to see more.



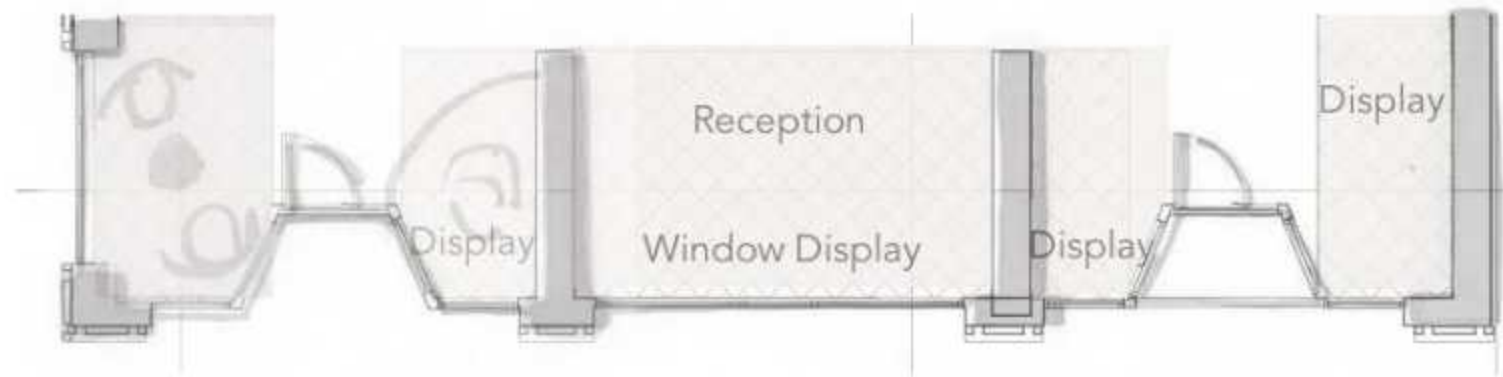
Digital window displays  
- logo  
- video ads  
- brand graphics  
- etc.





# Problem Resolution Studies :

Entry

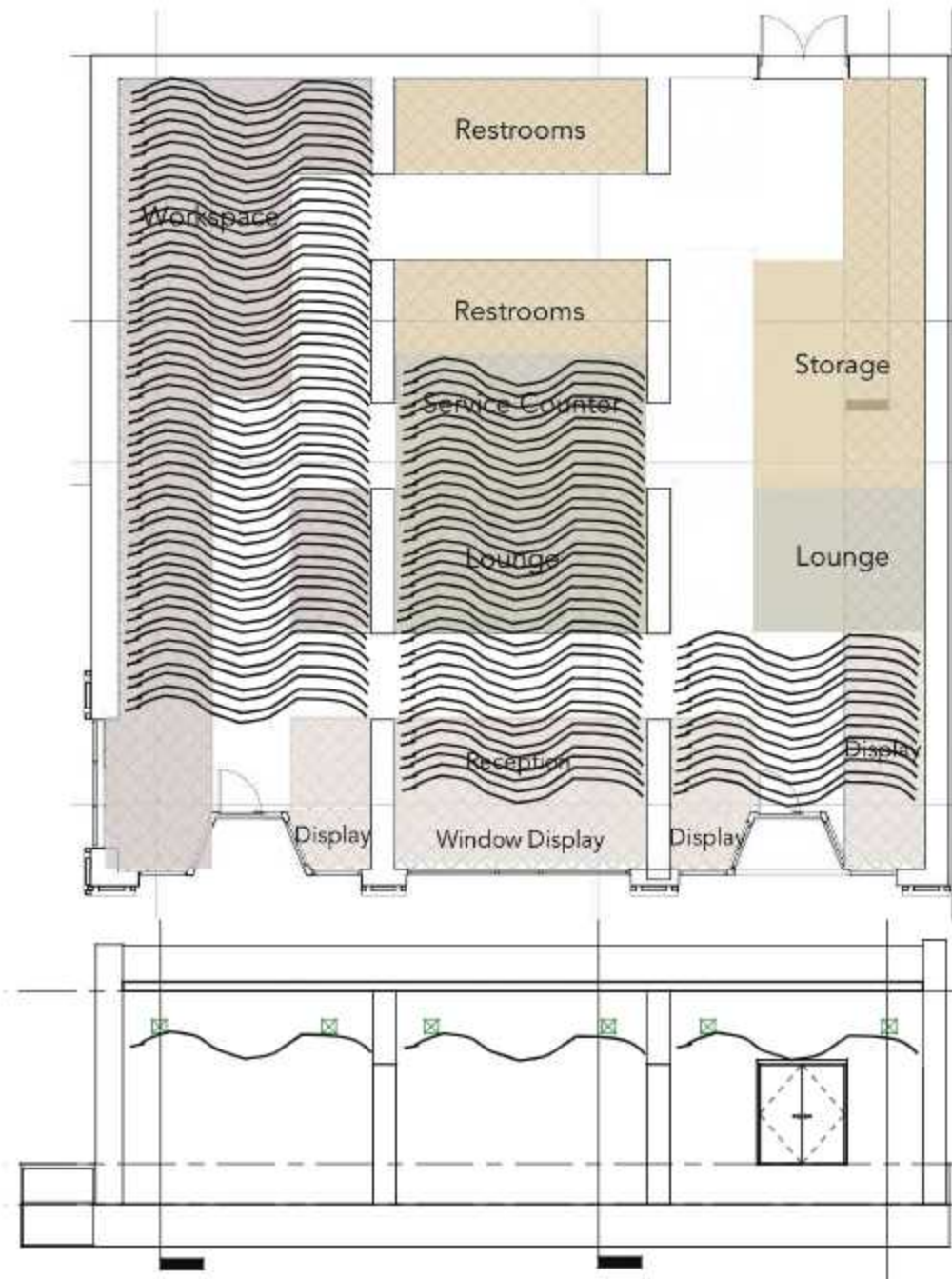


**Solution Two: Corner Window Display**  
Staged seating area in corner window and platform chair displays in the entryway allow customers to see directly into the space.



# Problem Resolution Studies :

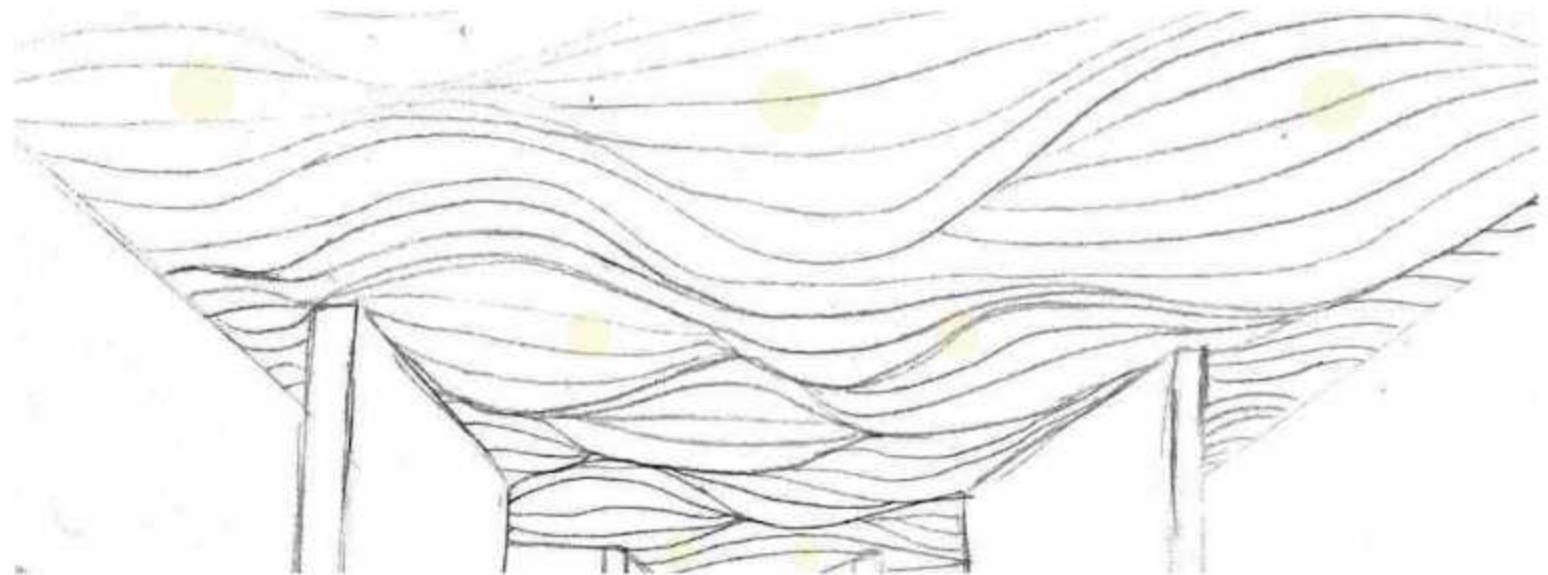
## Ceiling/Daylighting



### Solution One

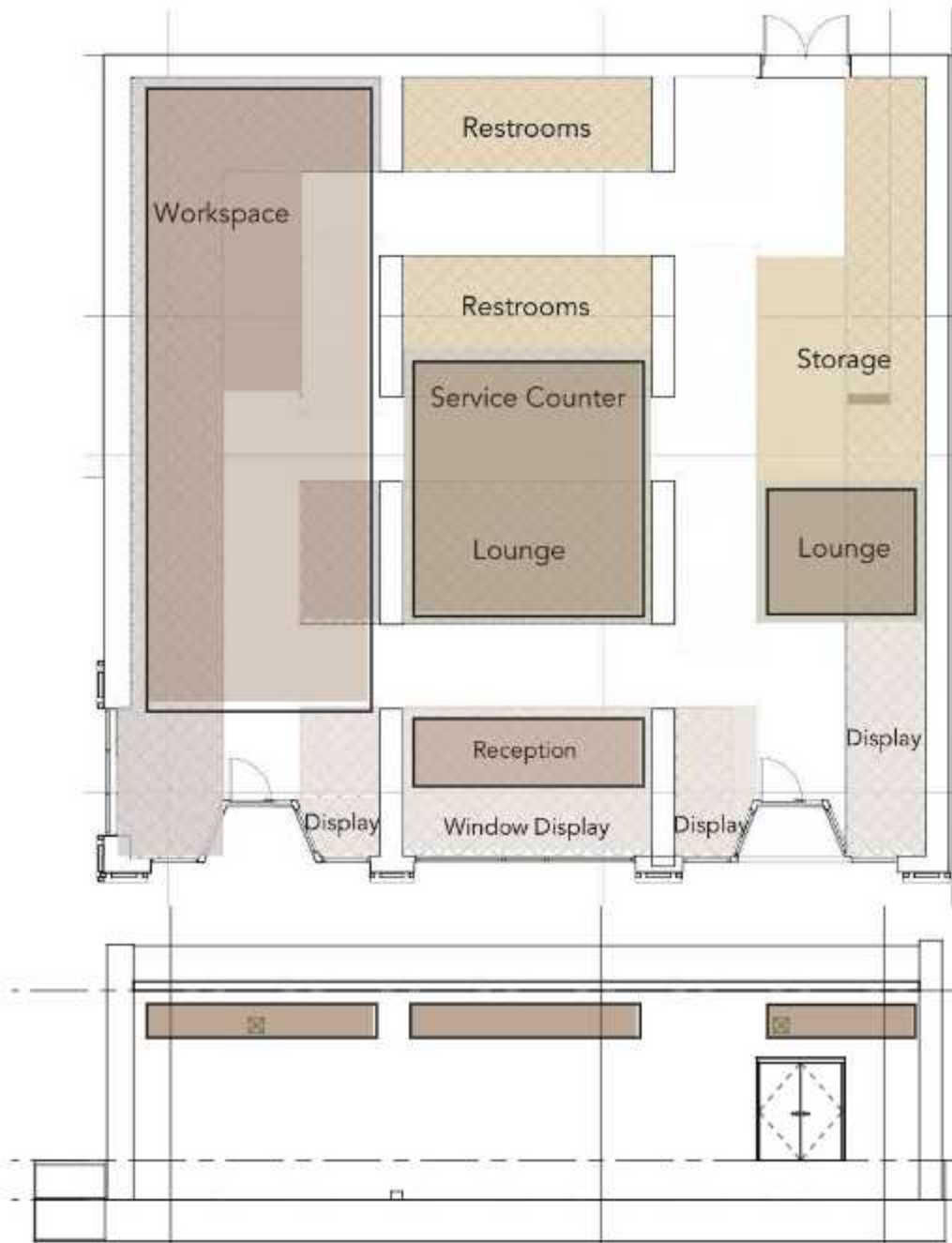
“Ebbs and Flows Kit” felt ceiling quiets the space with a high sound absorption, adds warmth, and redefines the visual plane.

Installed in modular blades, lighting can be installed above to soften or between the blades for bright light.

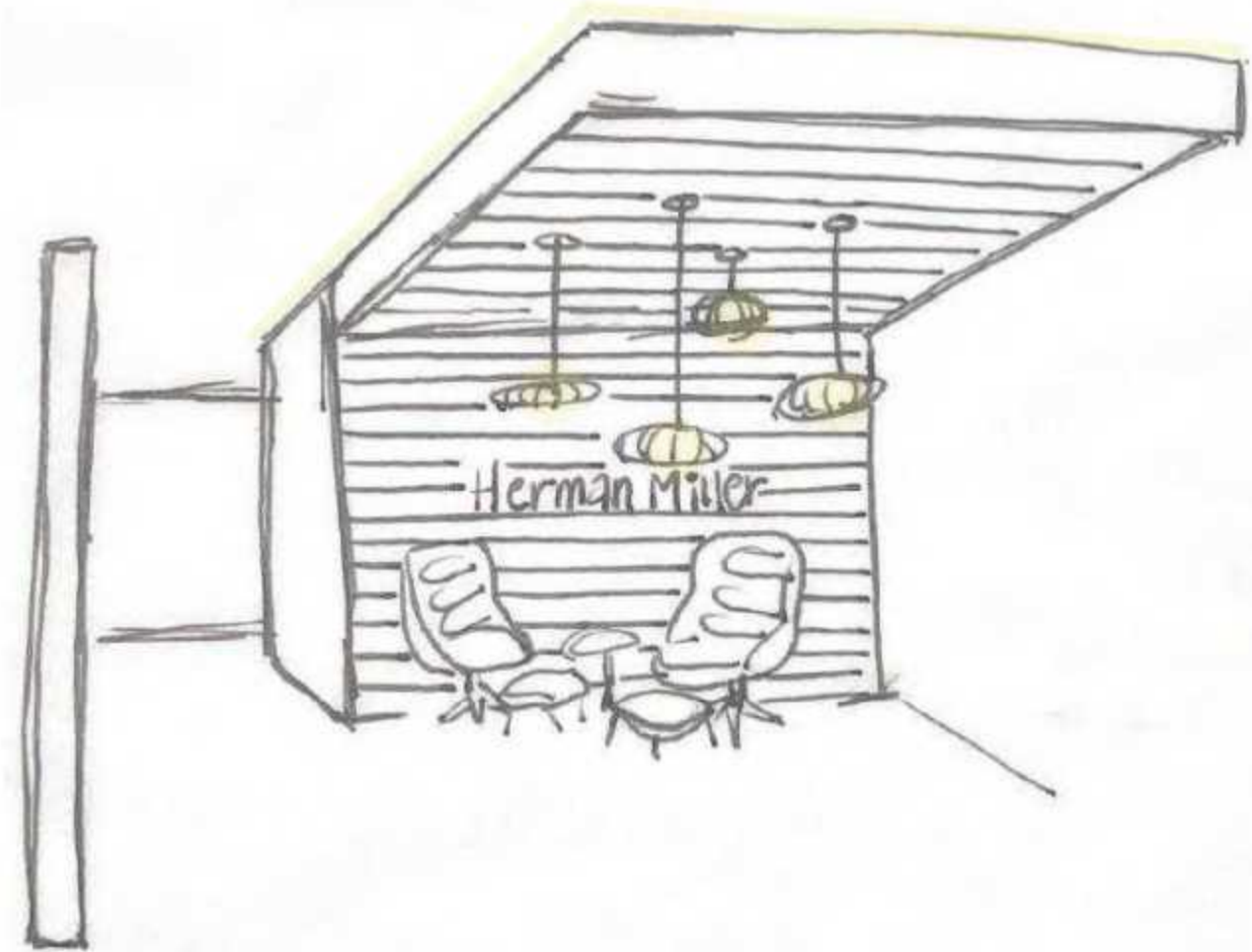


# Problem Resolution Studies:

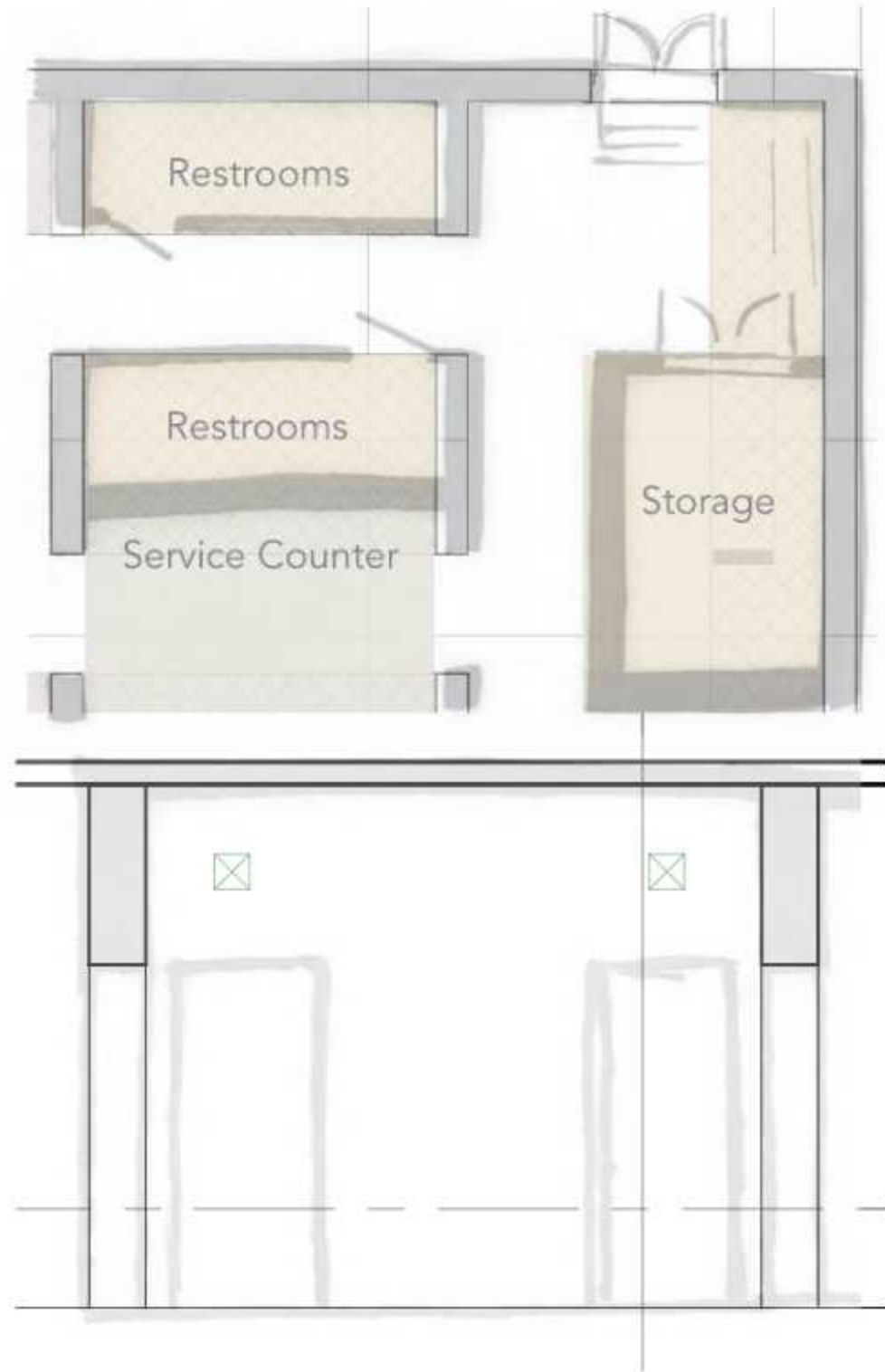
## Ceiling/Daylighting



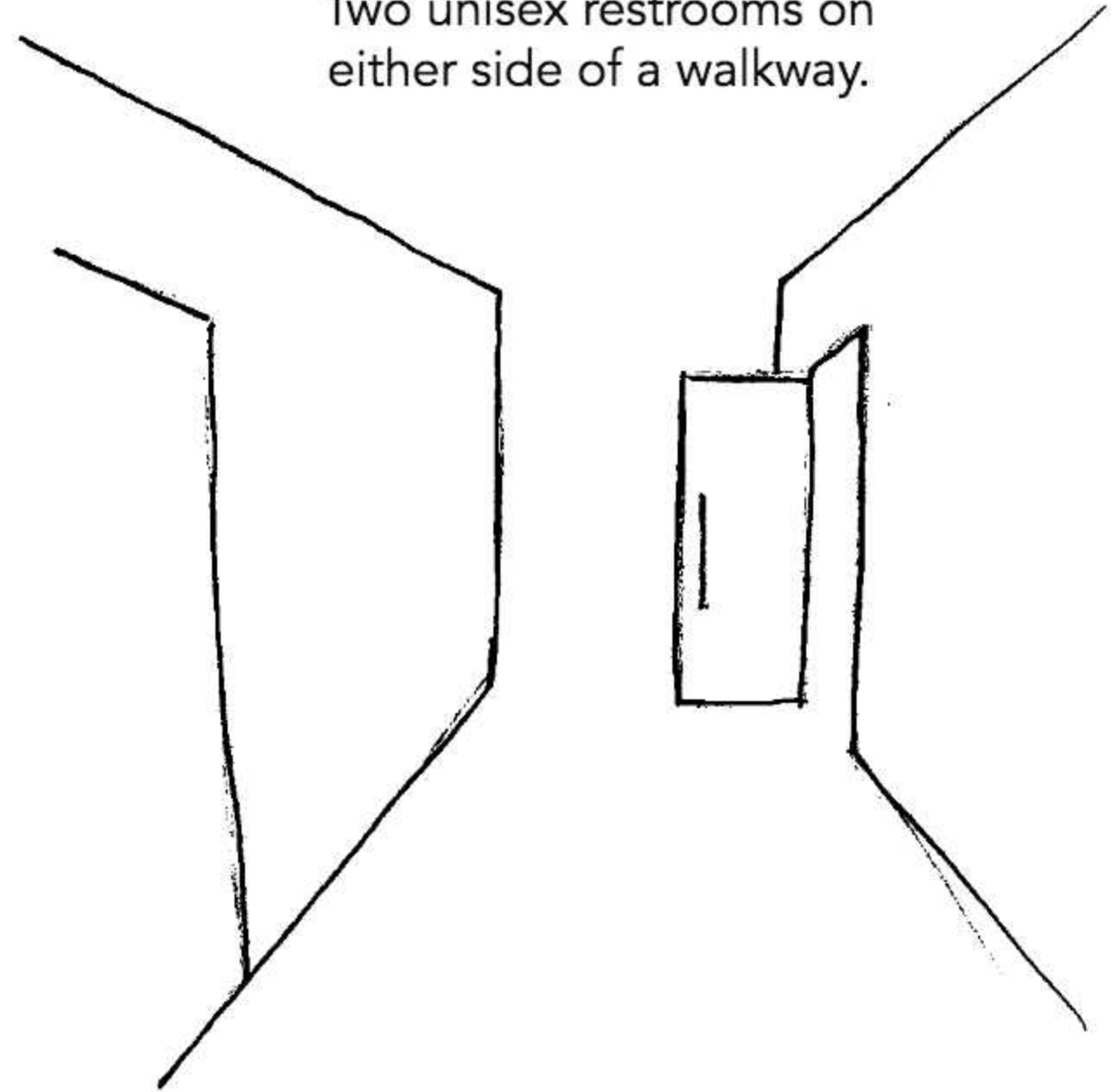
**Solution Two**  
Wood paneled suspended ceilings  
break up and define each space.



# Problem Resolution Studies: Support Spaces



Solution One : Restrooms  
Two unisex restrooms on  
either side of a walkway.

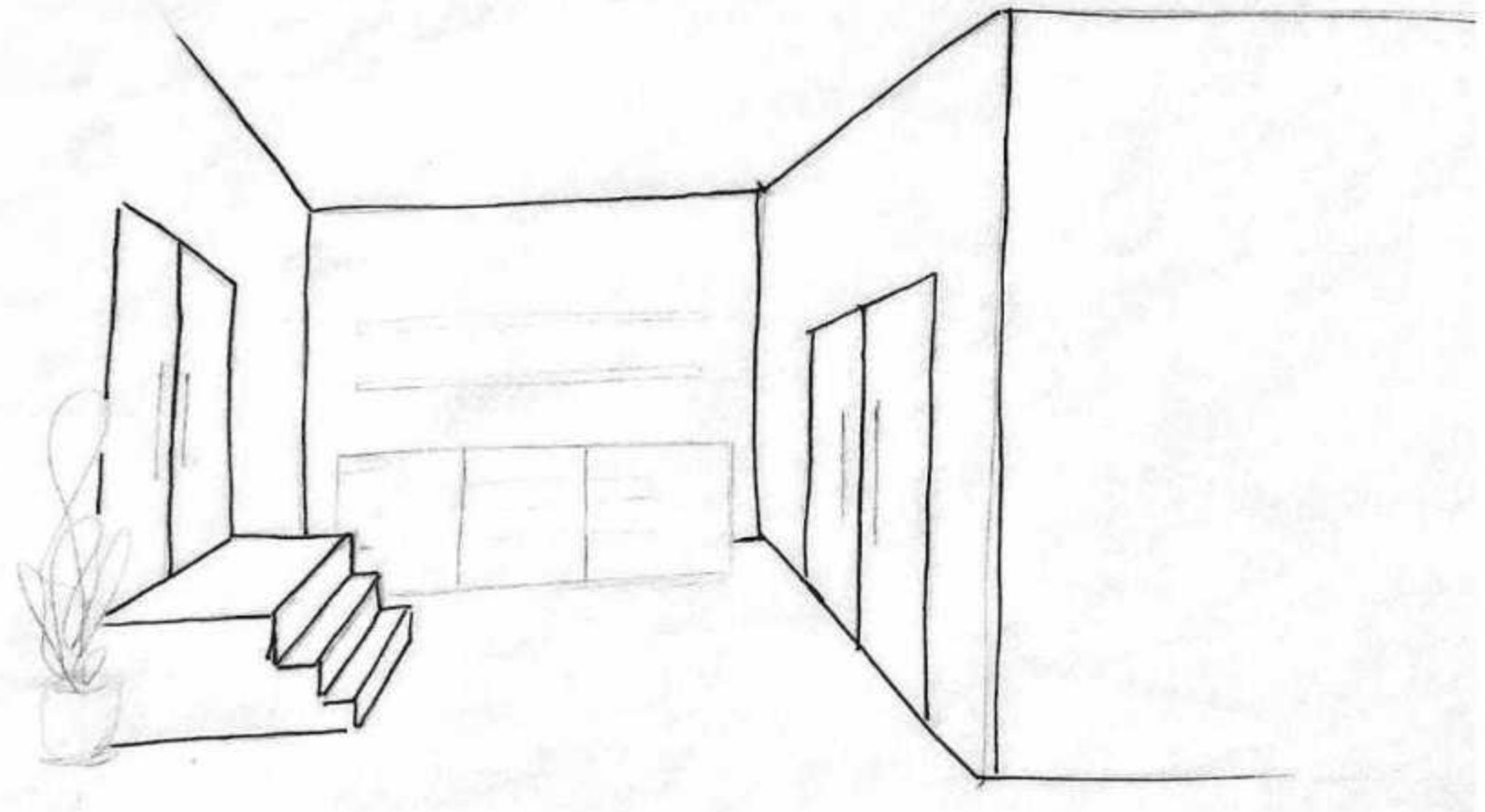


# Problem Resolution Studies : Support Spaces

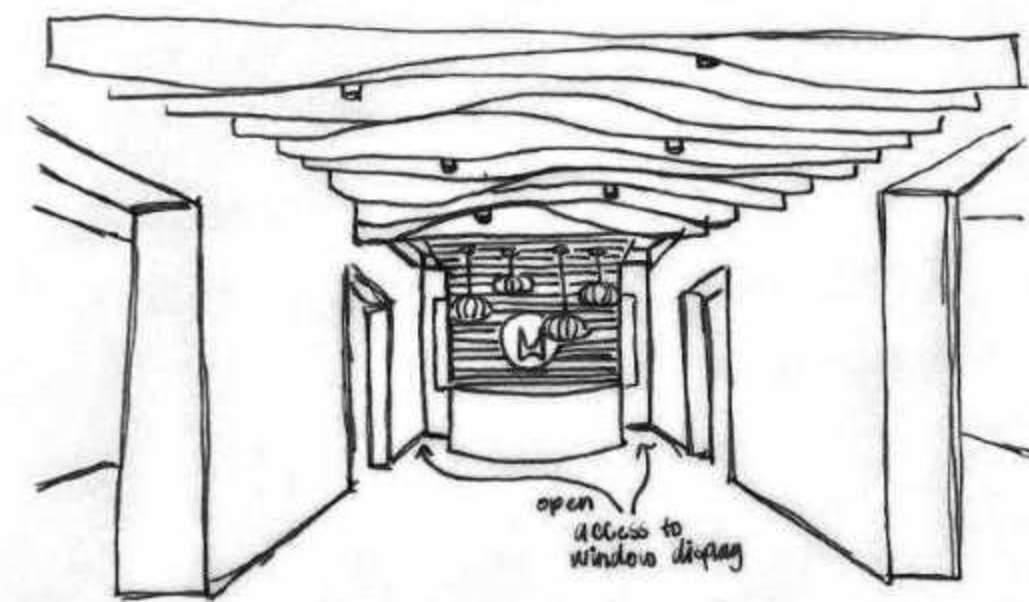
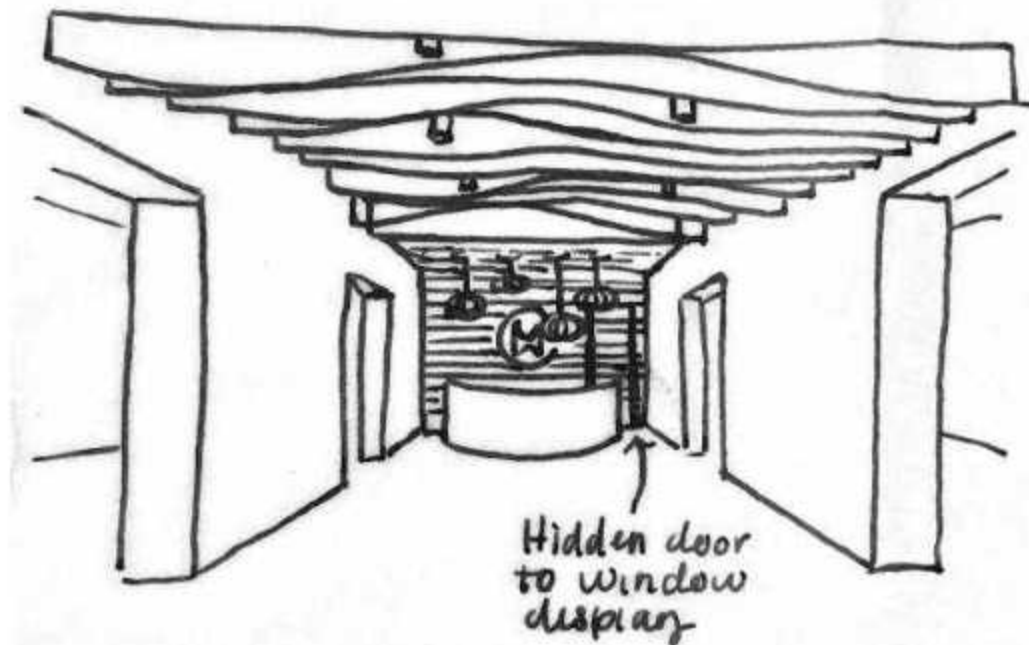
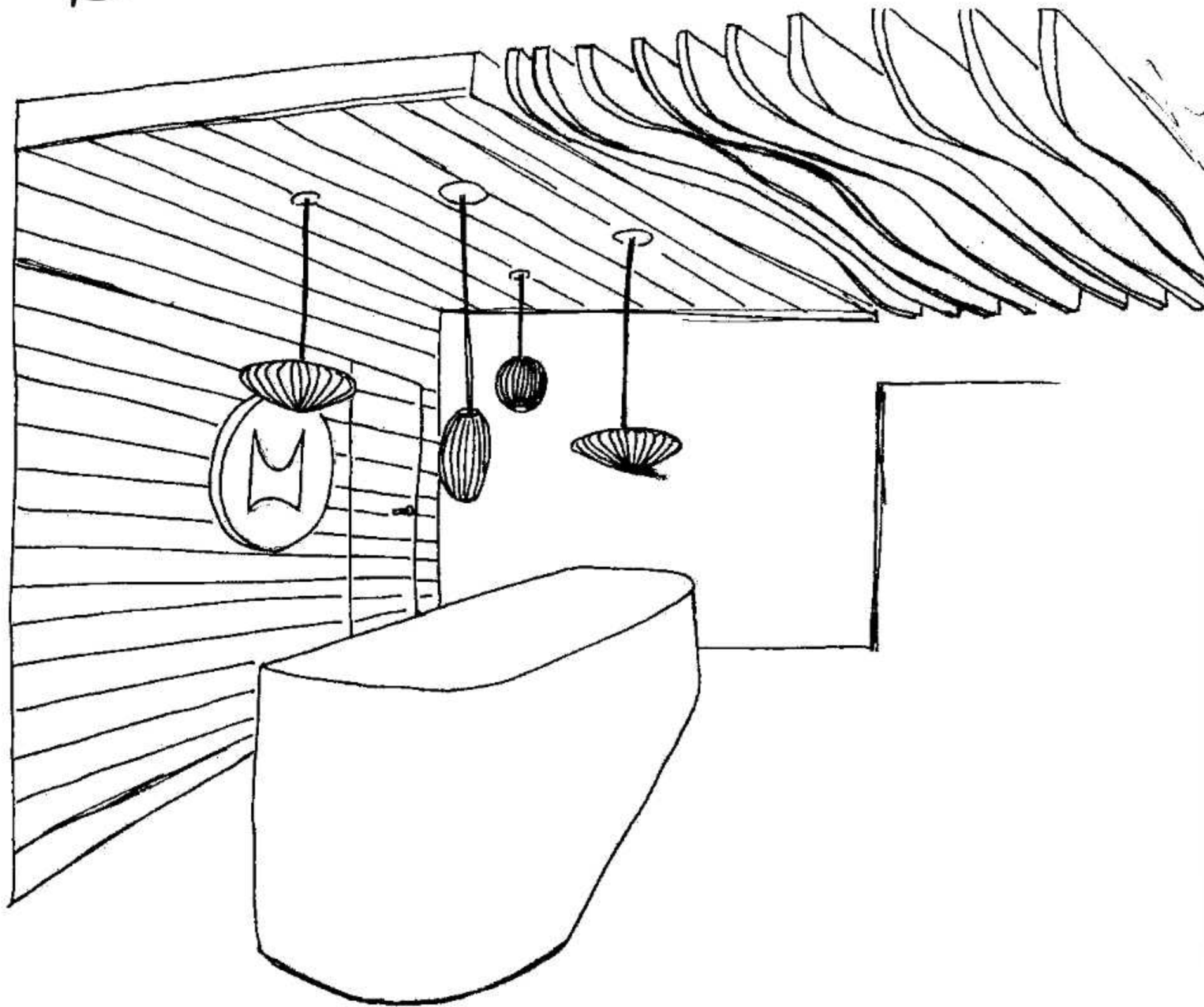


## Solution Two : Storage

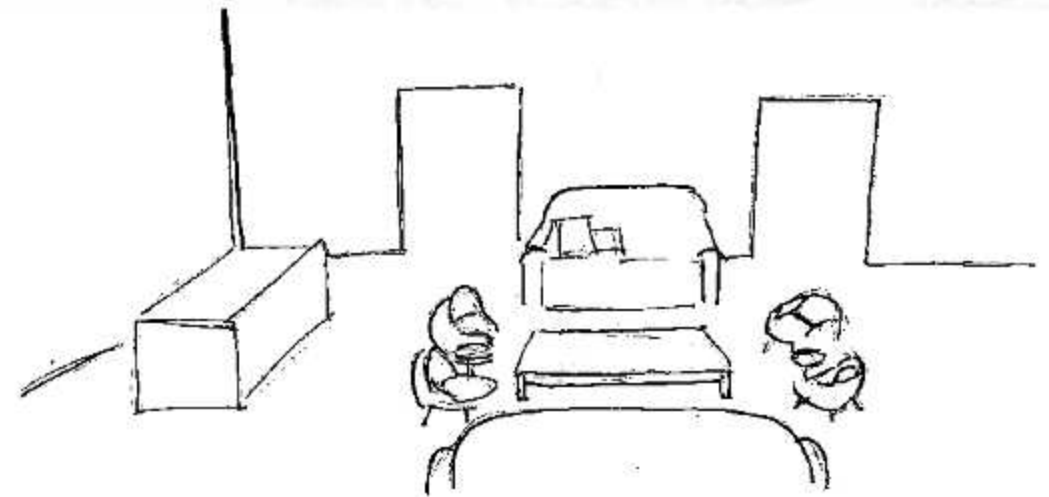
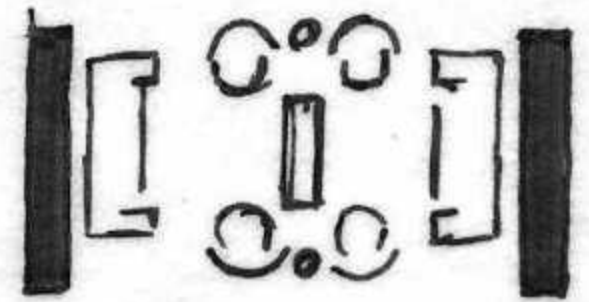
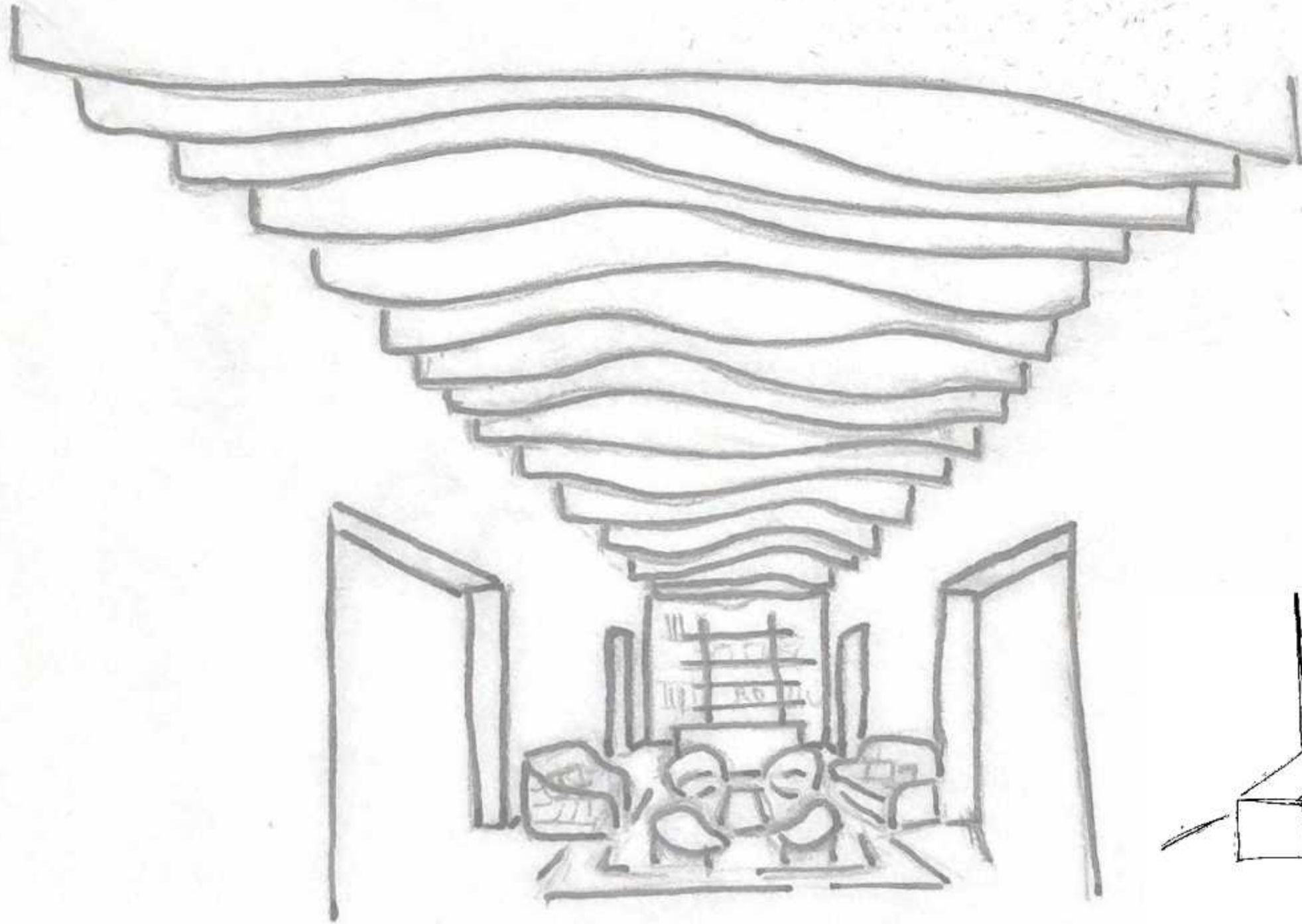
Enclosed storage room located near the rear exit for convenient moving and restocking. Double doors are included to accommodate large storage items.



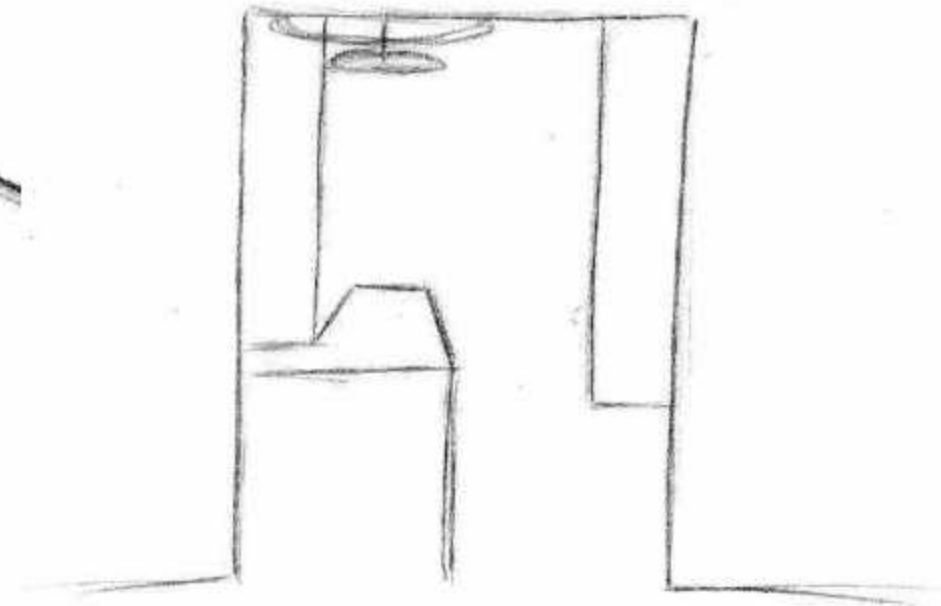
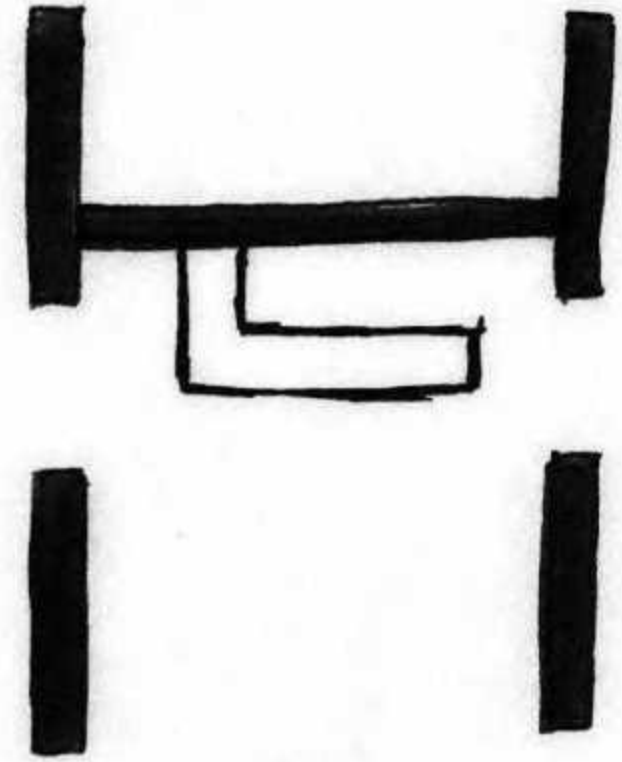
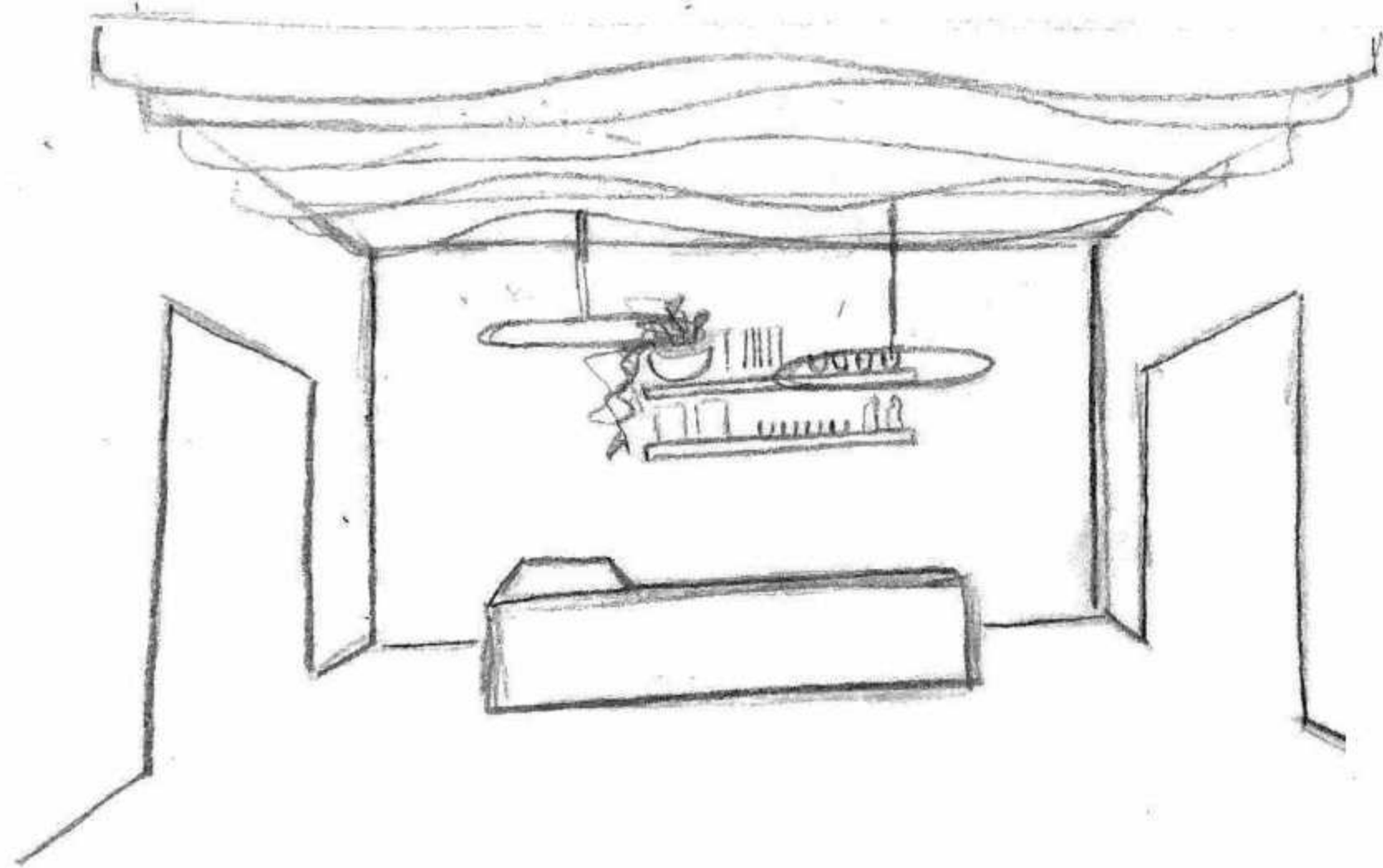
# Design Synthesis Studies: Reception



# Design Synthesis Studies: Lounge

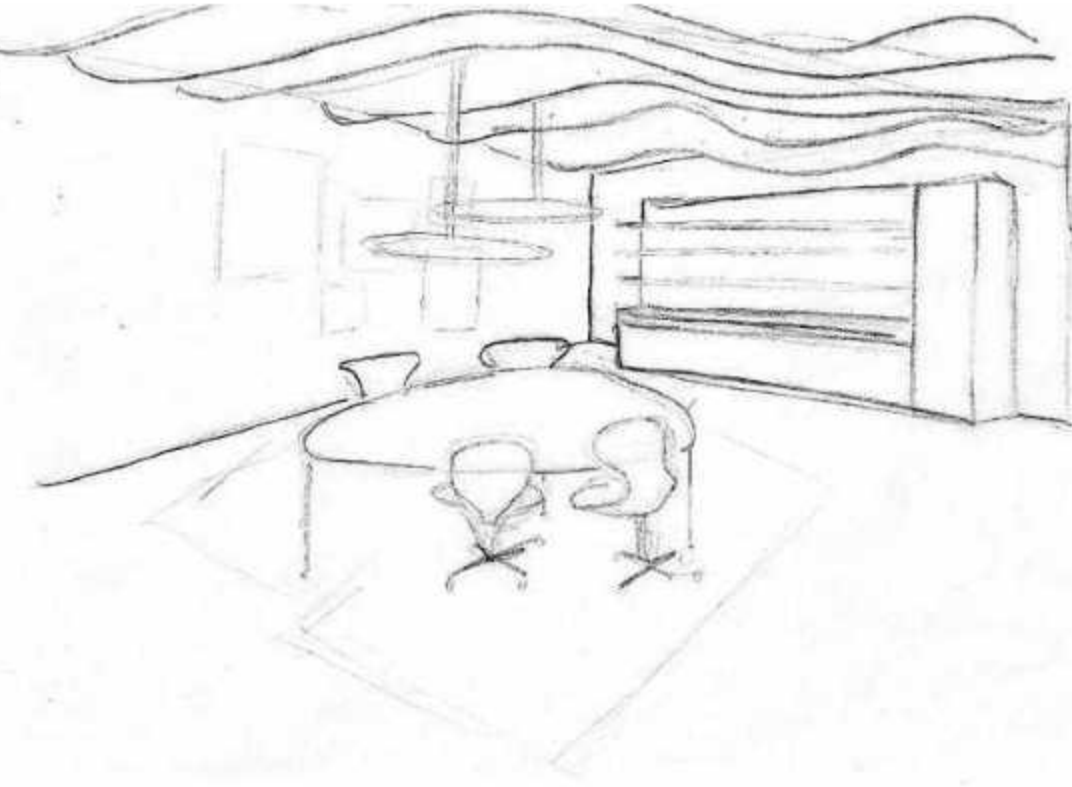
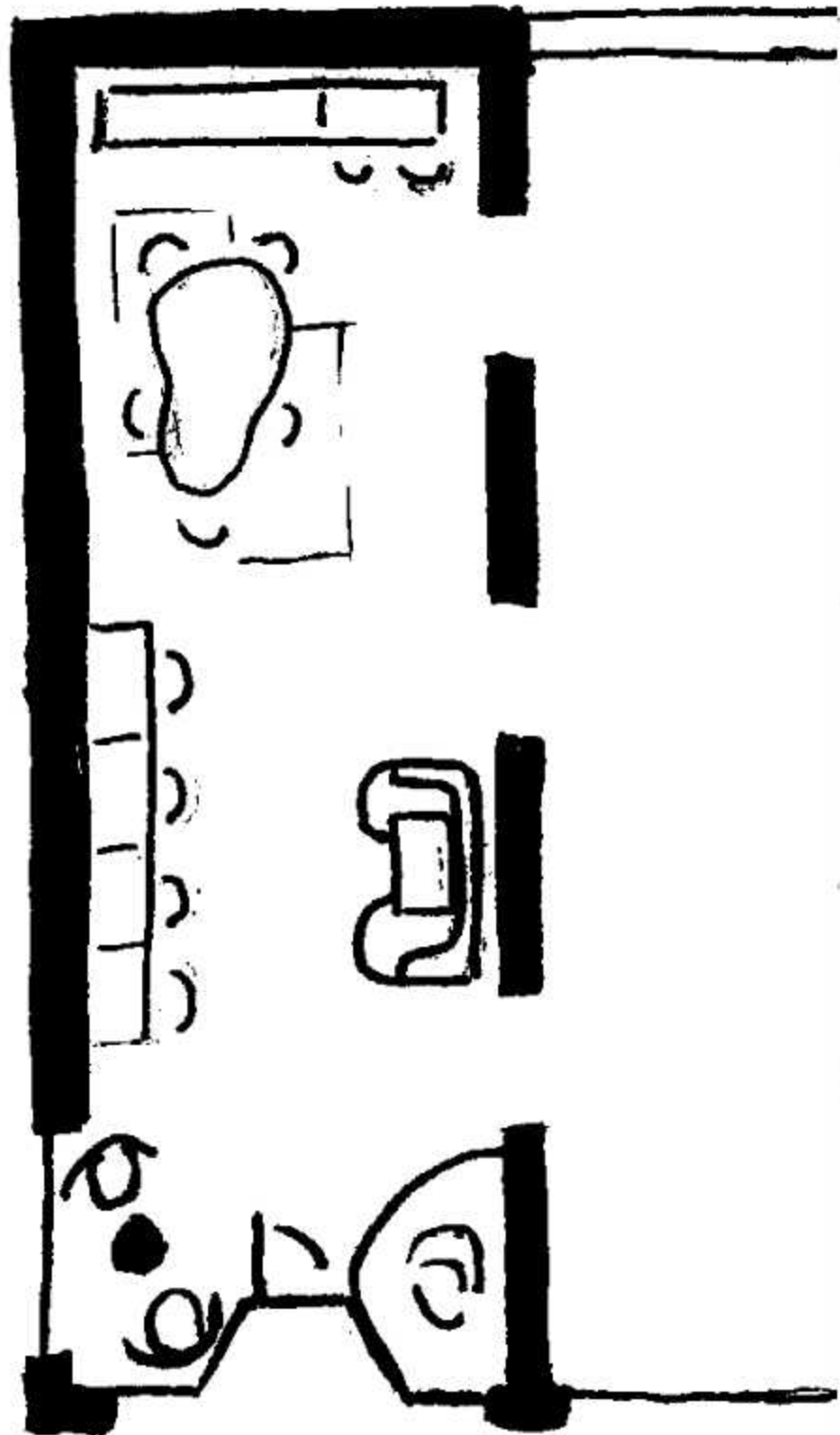


# Design Synthesis Studies: Service Counter

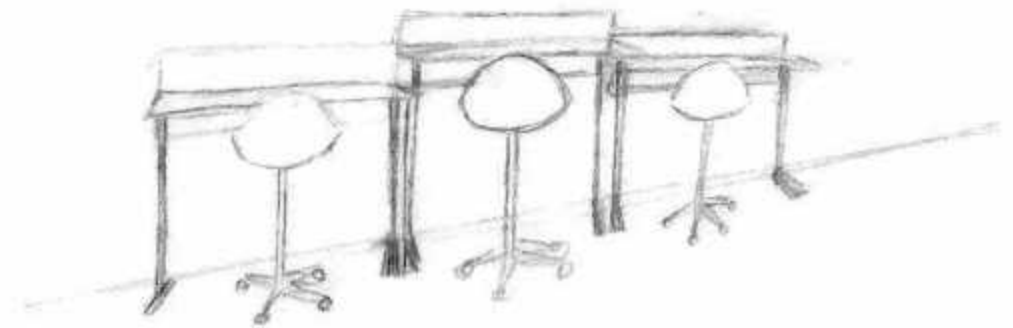




# Design Synthesis Studies: Open Work Area



Ratio side by side  
sit-stand desks



# Furniture and Finish Palettes: Lounge



# Furniture and Finish Palettes: Workspace



# Lighting Model

