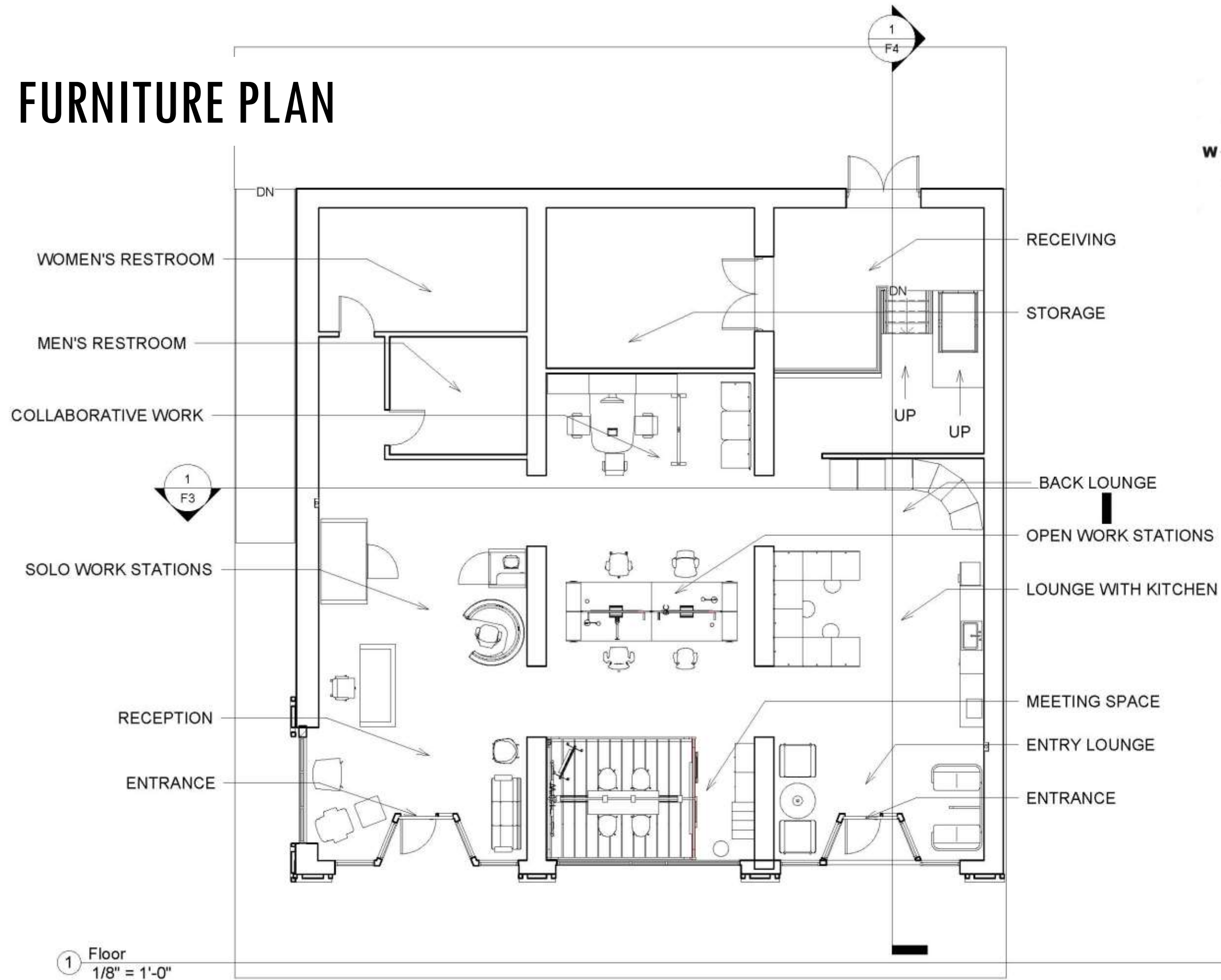




# HERMAN MILLER SHOWROOM PORTFOLIO 3

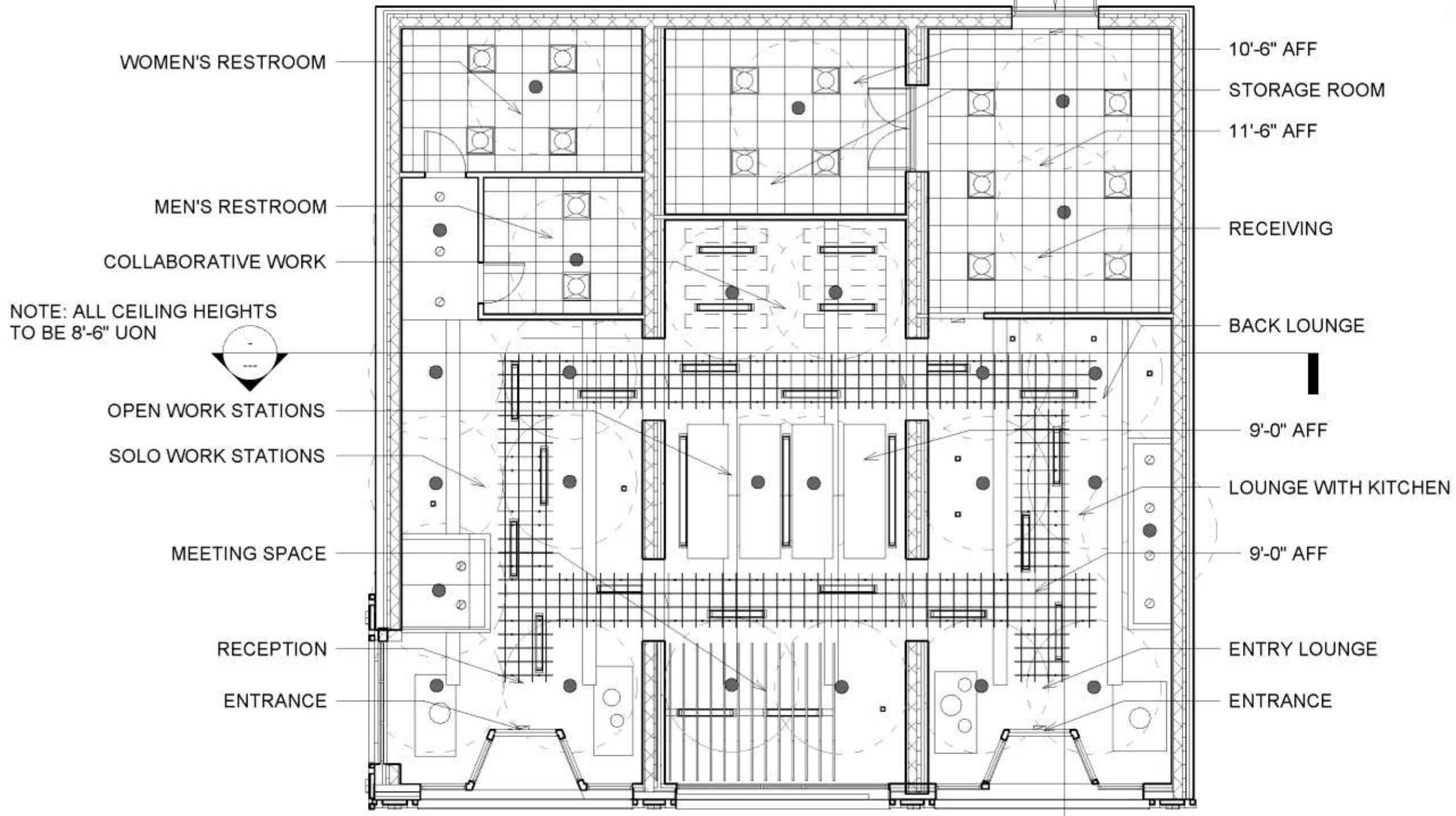
IDSN 3102 Fall Semester  
Jessica Stark

# FURNITURE PLAN



1 Floor  
1/8" = 1'-0"

# REFLECTED CEILING PLAN










NOTE: ALL CEILING HEIGHTS TO BE 8'-6" UON

1 Floor  
1/8" = 1'-0"


# REFLECTED CEILING PLAN LEGEND



-  TROFFER LIGHT 2X2 120V
-  LUMENWERX LINEAR PENDANT 4FT
-  LUMENWERX LINEAR PENDANT 8FT
-  LUMENWERX CYLINDER PENDANT
-  RECESSED CAN LIGHT 8"
-  EXIT SIGN
-  DUCTWORK

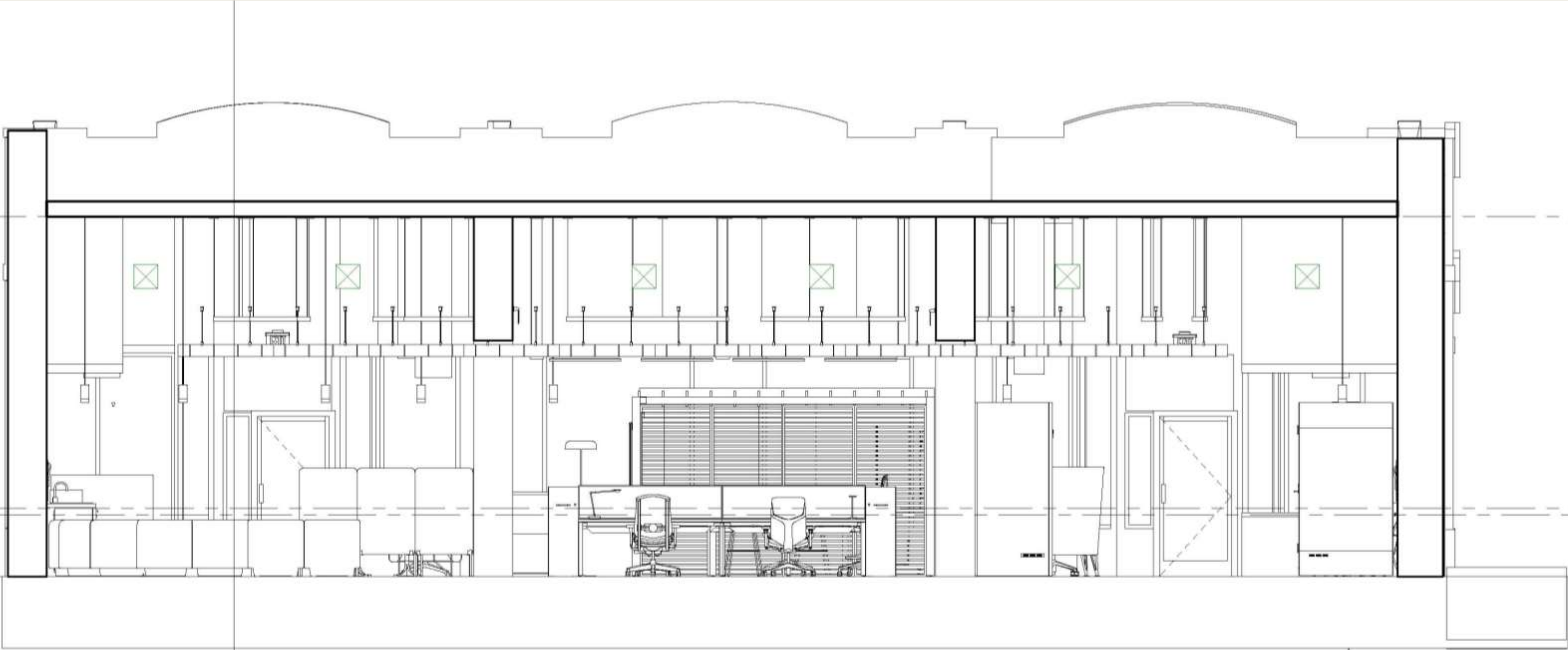


AB SPRINKLER SYSTEM

 RCP LEGEND  
1/8" = 1'-0"

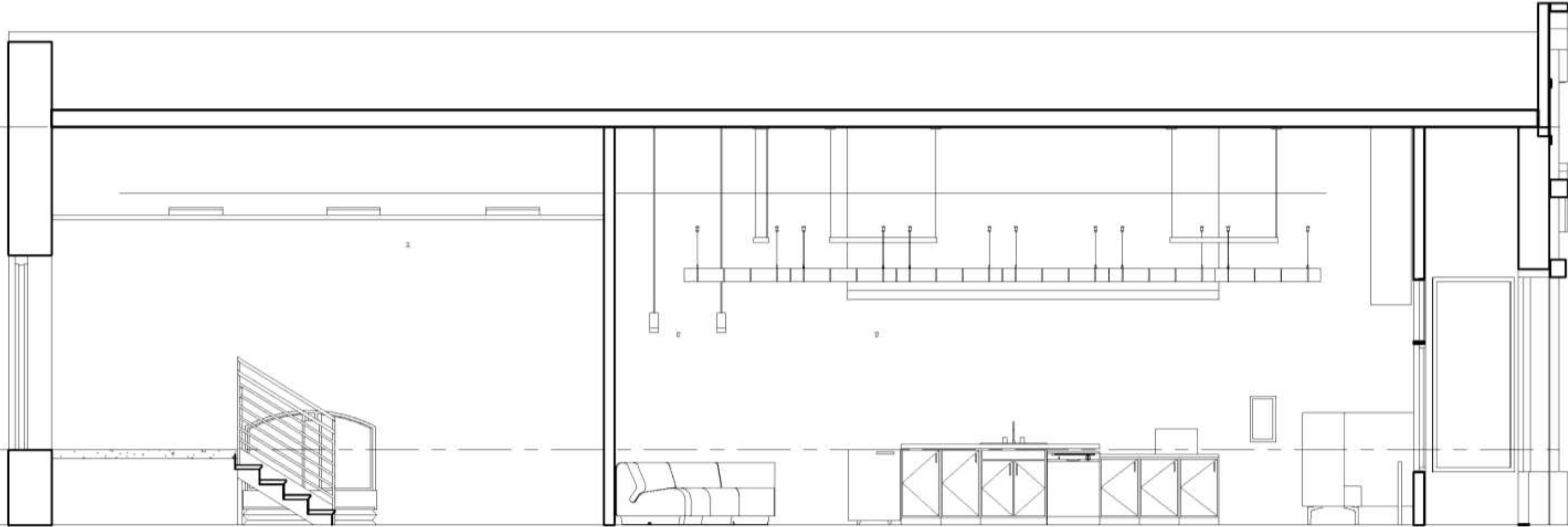
---

# EAST-WEST SECTION



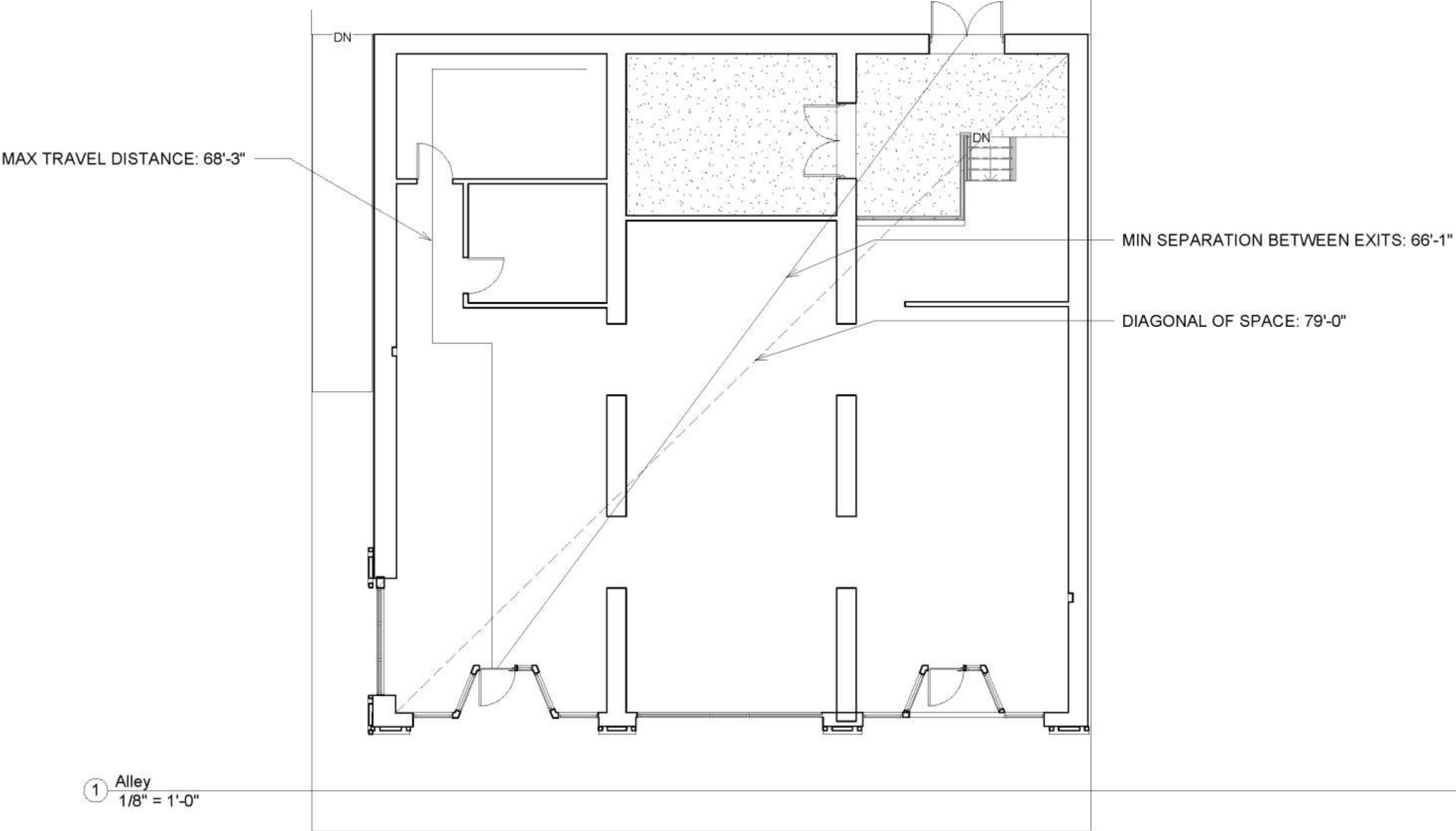
1 Section 1  
1/4" = 1'-0"

# NORTH-SOUTH SECTION



1 Section 9  
1/4" = 1'-0"

# LIFE SAFETY PLAN



# LIFE SAFETY PLAN TABLE

Building Construction and Occupancy					
Construction Type	Sprinklers?	Occupancy Type			
TYPE IV	YES	M & A			
Exit Requirements: Number and Arrangement of Exits					
Space Designation	# of Exits		Travel Distance		
	Required	Shown on Plans	Allowable Distance	Actual Distance Shown on Plans	
201-205 E FIFTH ST	2	3	75'-0"	68'-3"	
Notes:					
Use Group or Space Designation	(A)	(B)	Calculated Occupant Load = A/B	©	
	Area = Sq. Ft.	Area per Occupant		Stair	Level
201-205 E FIFTH ST	2902 & 600	48 & 120 (168 TOTAL)	18	.3"	.2"
Notes:					