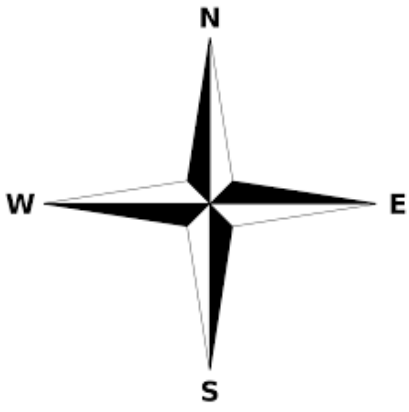


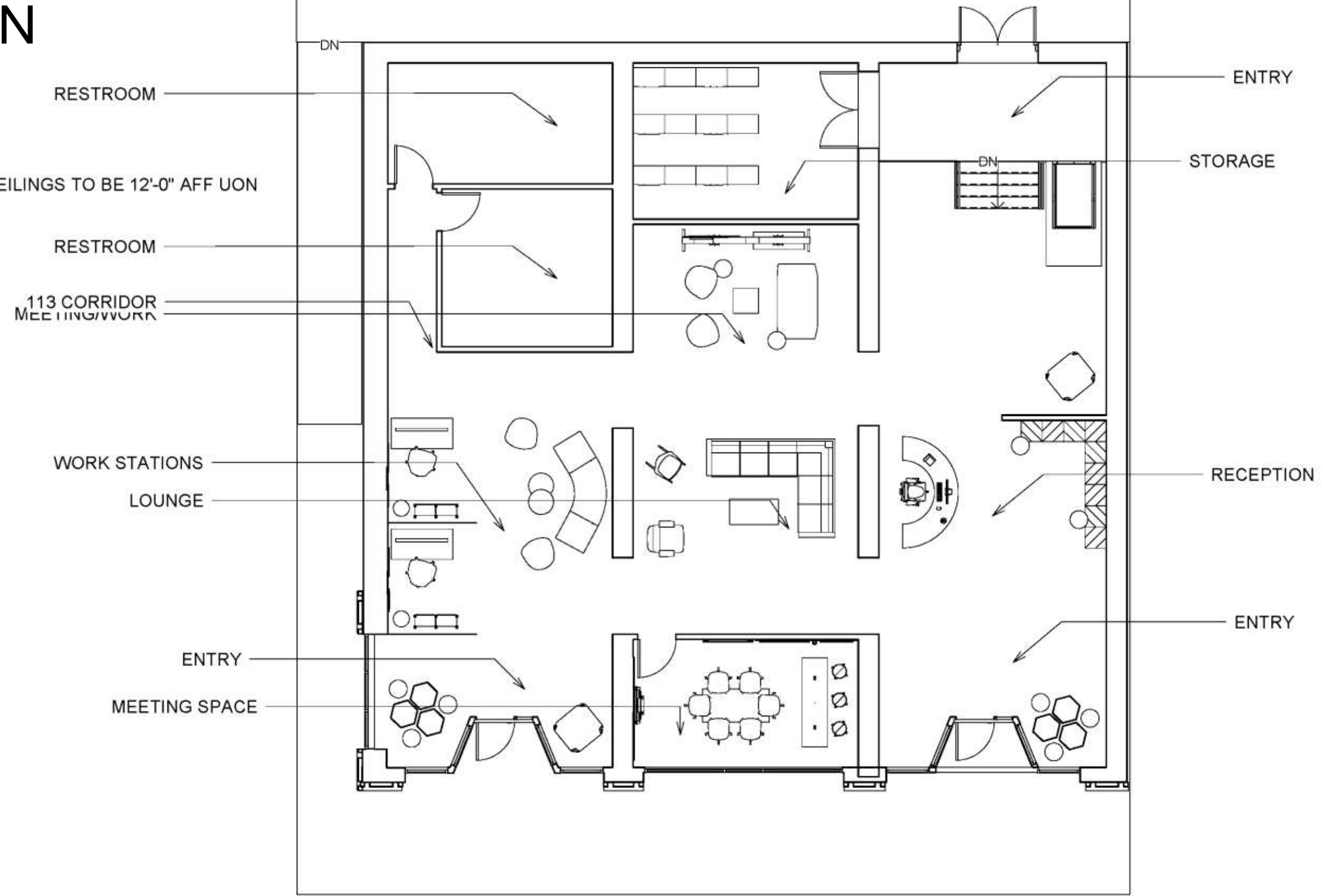
Haley Thigpen  
IDSN 3201 – P3

TECHNICAL DRAWINGS

# REVIT FURNITURE PLAN

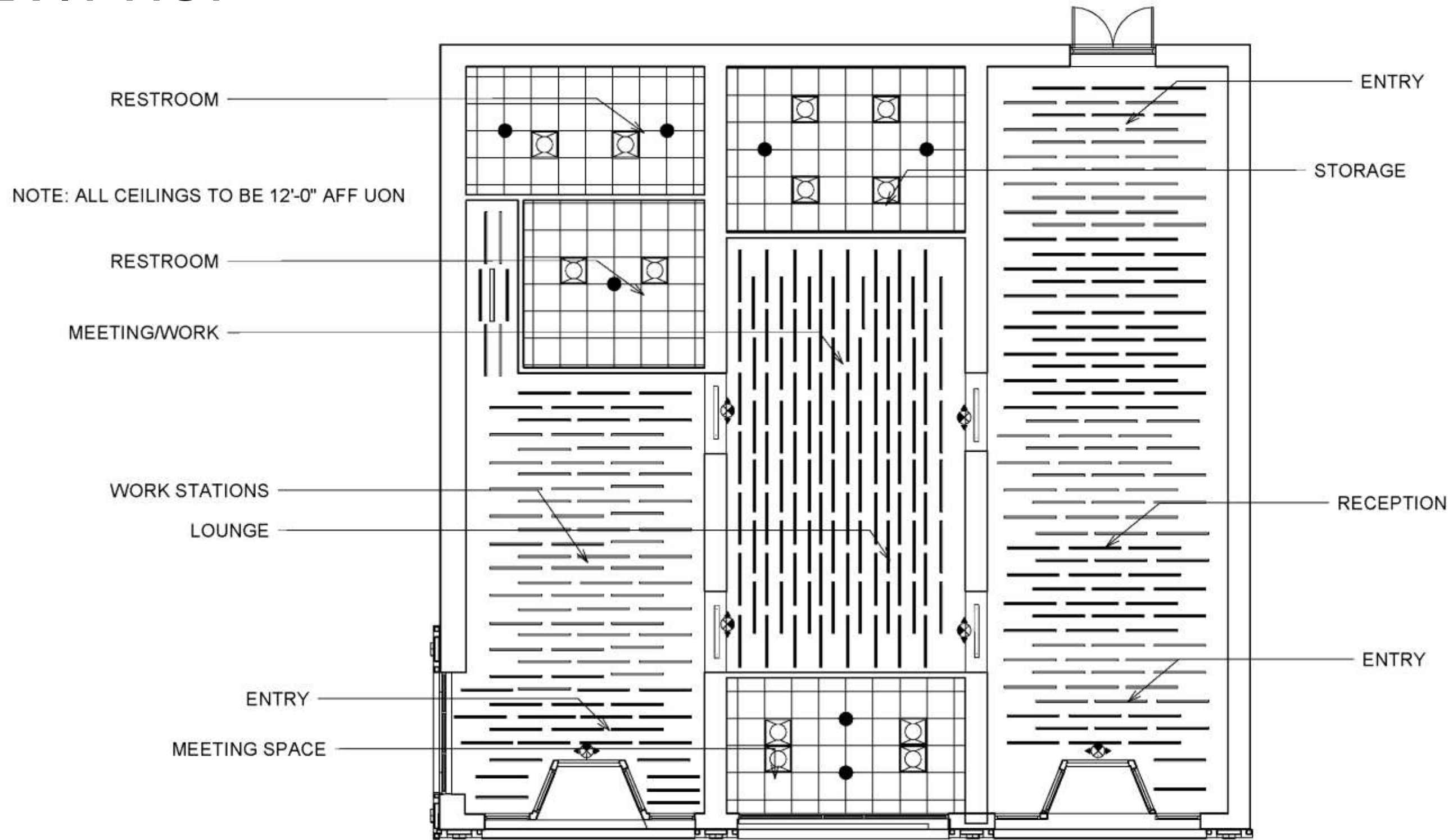
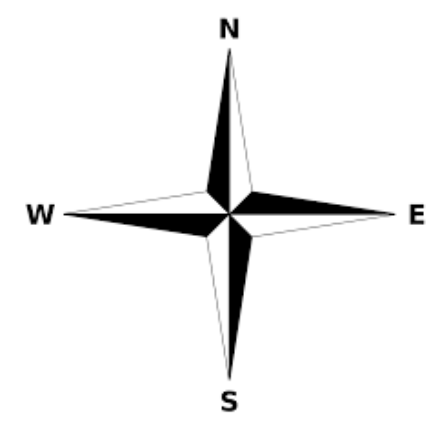


NOTE: ALL CEILINGS TO BE 12'-0" AFF UON



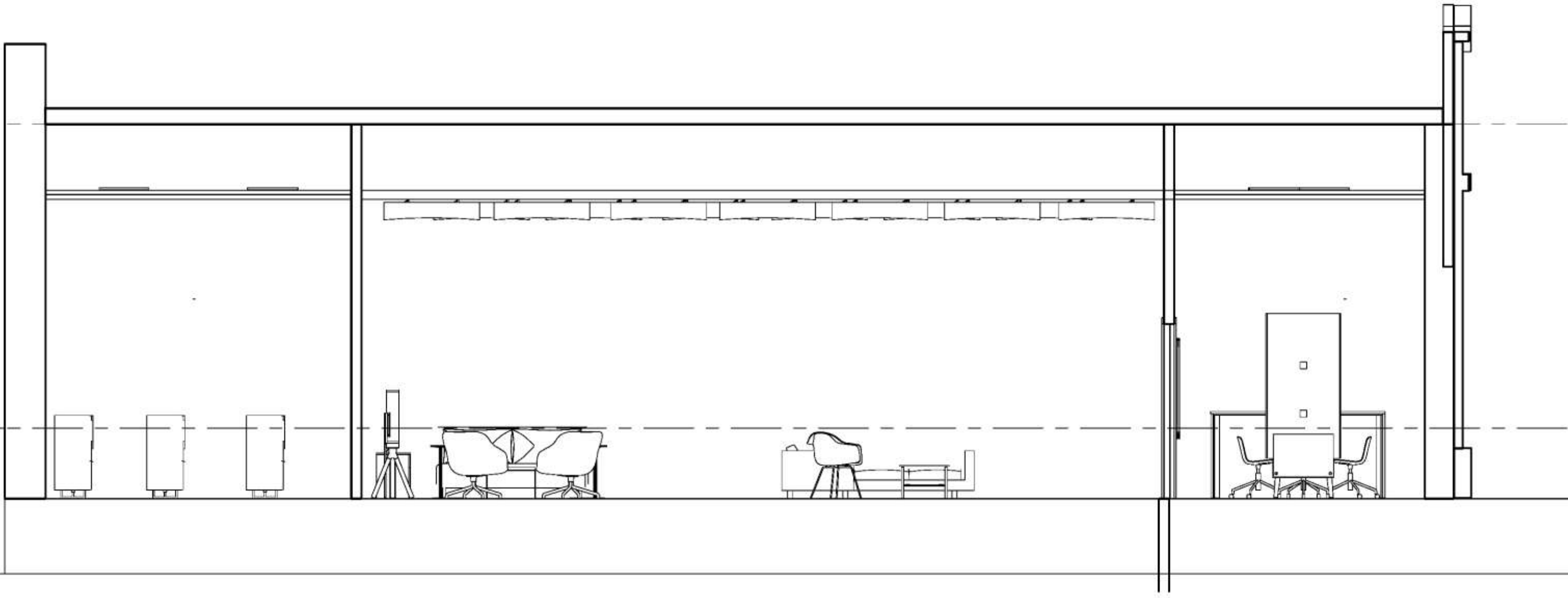
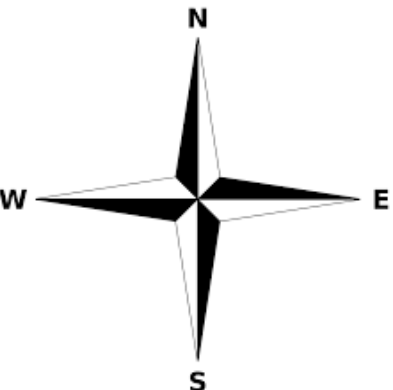
① Floor  
1/8" = 1'-0"

# REVIT RCP

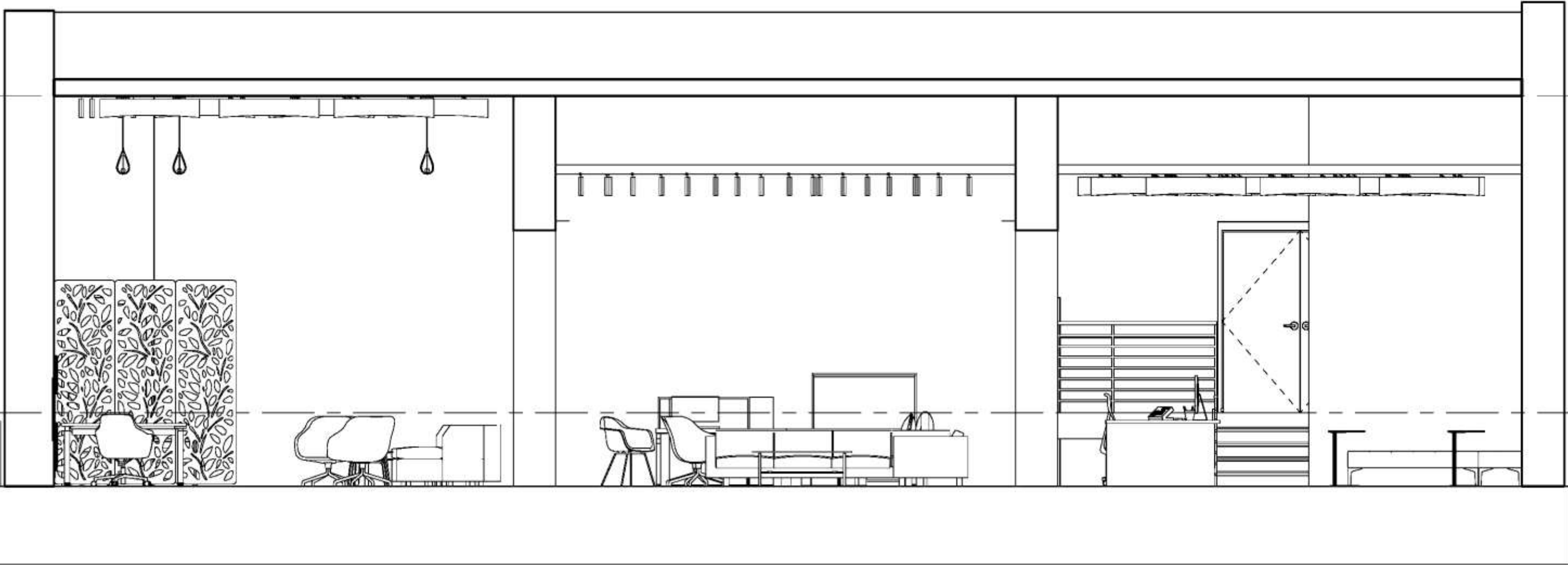
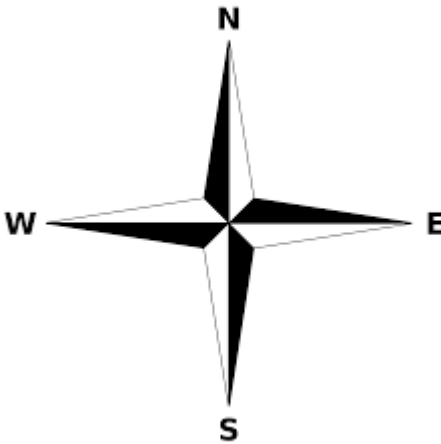


① Floor  
1/8" = 1'-0"

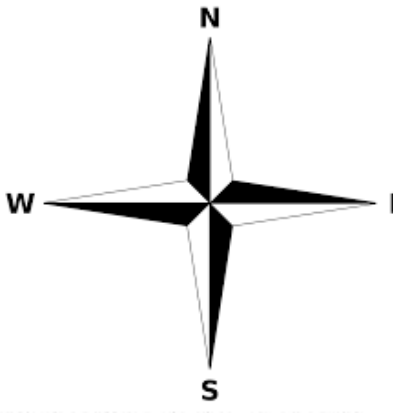
# REVIT N-S SECTION



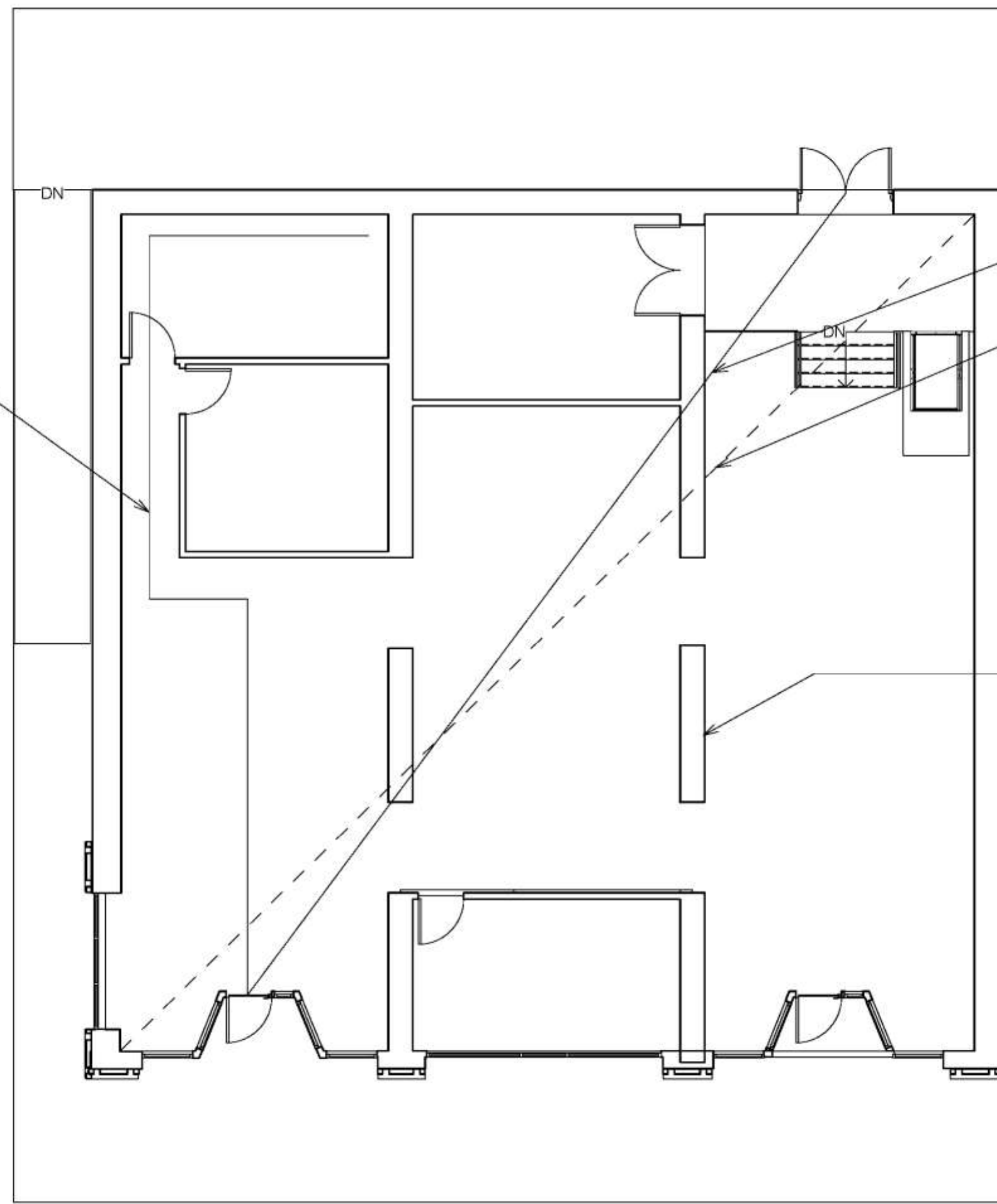
# REVIT E-W SECTION



# REVIT LIFE SAFETY PLAN



MAX TRAVEL DISTANCE: 71'-2"



MINIMUM SEPARATION BETWEEN EXITS: 66'-1"

DIAGONAL OF SPACE: 79'-0"

FIRE EXTINGUISHER

# LIFE SAFETY PLAN

Building Construction and Occupancy									
Construction Type		Sprinklers?		Occupancy Type					
TYPE IV		YES		M & A					
Exit Requirements: Number and Arrangement of Exits									
Space Designation	# of Exits		Travel Distance		Arrangement: Means of Egress				
	Required	Shown on Plans	Allowable Distance	Actual Distance Shown on Plans	Req'd Distance Between Exits		Actual Distance Shown on Plans		
201-205 E FIFTH STREET	2	3	75'-0"	71'-2"	26'-6"		66'-1"		
Notes:									
Use Group or Space Designation	(A)	(B)	Calculated Occupant Load = A/B	©		Exit Width (Inches)			
	Area = Sq. Ft.	Area per Occupant		Egress per Occupant		Required Width = (A/B)xC		Actual Width	
				Stair	Level	Stair	Level	Stair	Level
201-205 E FIFTH STREET	2902 & 600	48 & 120 (168 TOTAL)	18	.3"	.2"	5.4"	3.6"	77"	67"
Notes:									