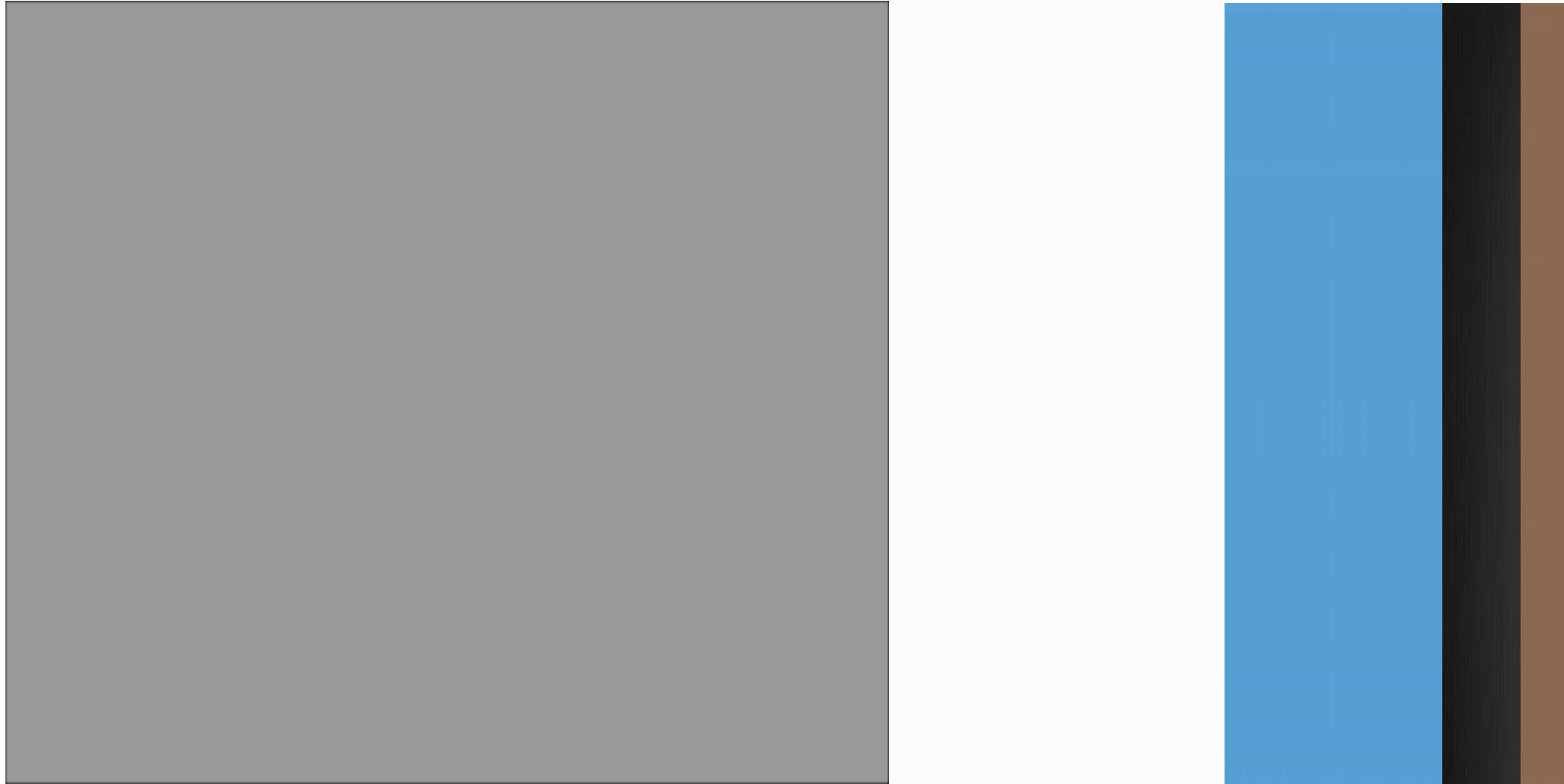


Entry Area

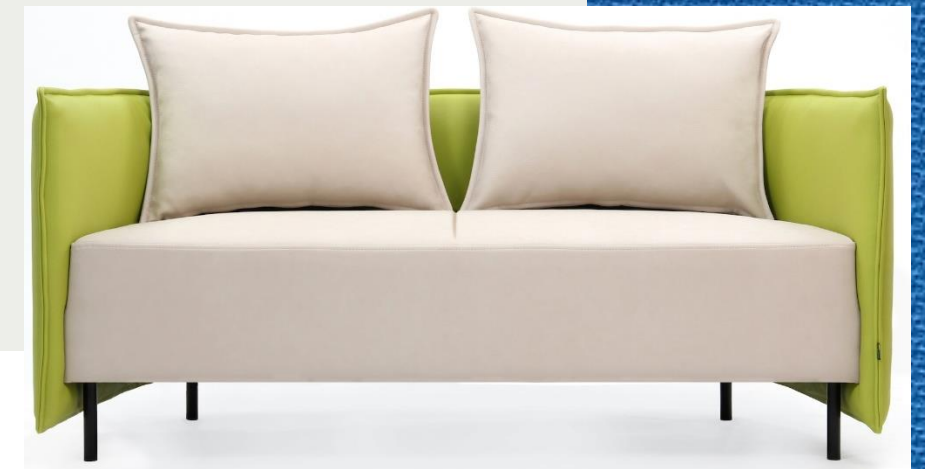
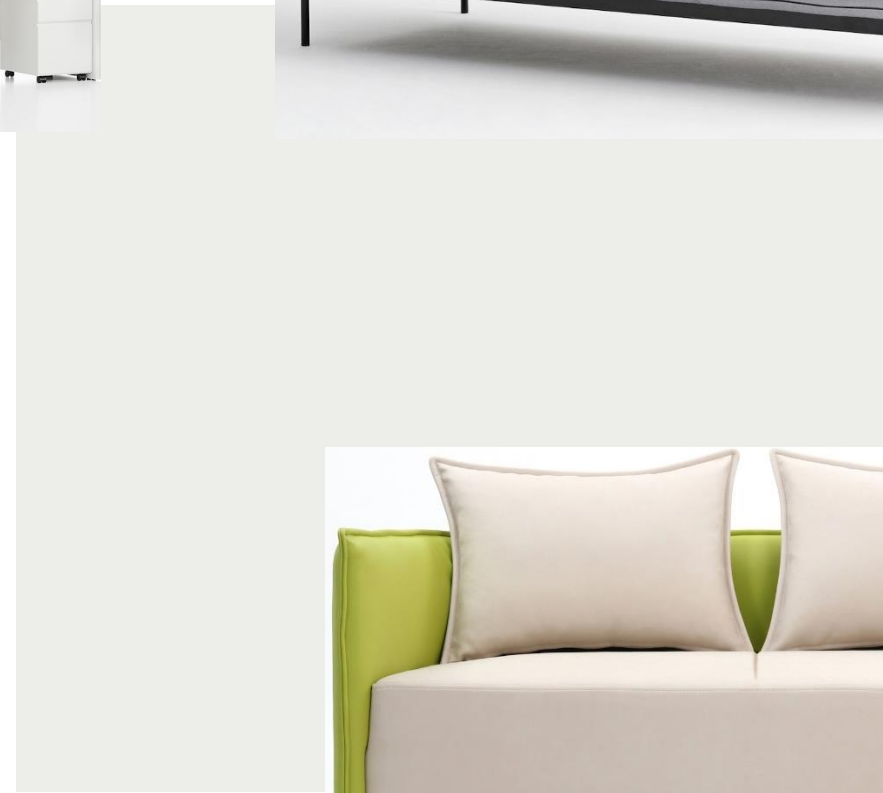
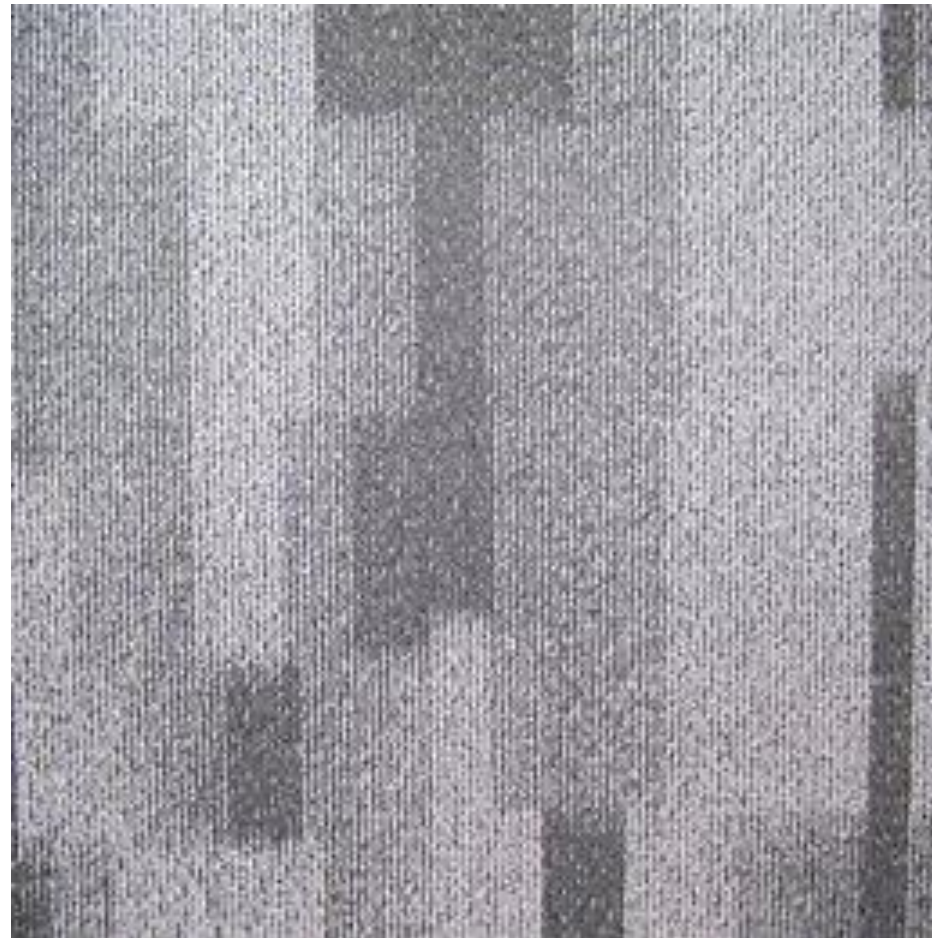


Entry



- The entry area has a cool gray color with hints of black, blue, and white fabric and wood to make it look professional
- Less distracting for the employees
- Feels open and clean

Furniture and finishes



Open Work Area

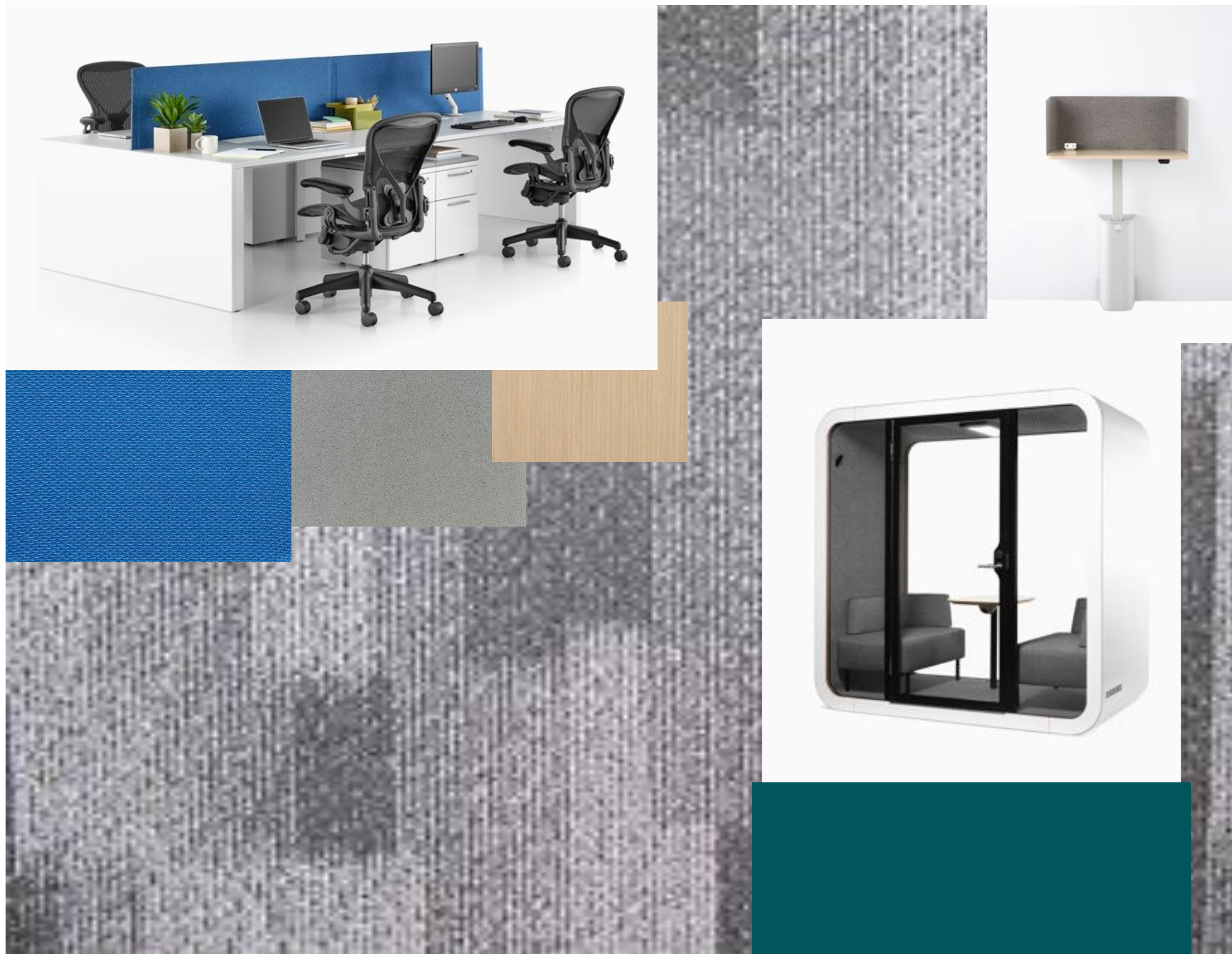


Office Space



- The office space has cool colors that keep the workspace simple and neat
- Clients can visualize better the color they would want for the furniture when its neutral
- The blue gives it a pop of color and helps direct eyes to the desk
- The black lighting fixtures help make the light look more contained

Furniture and Finishes



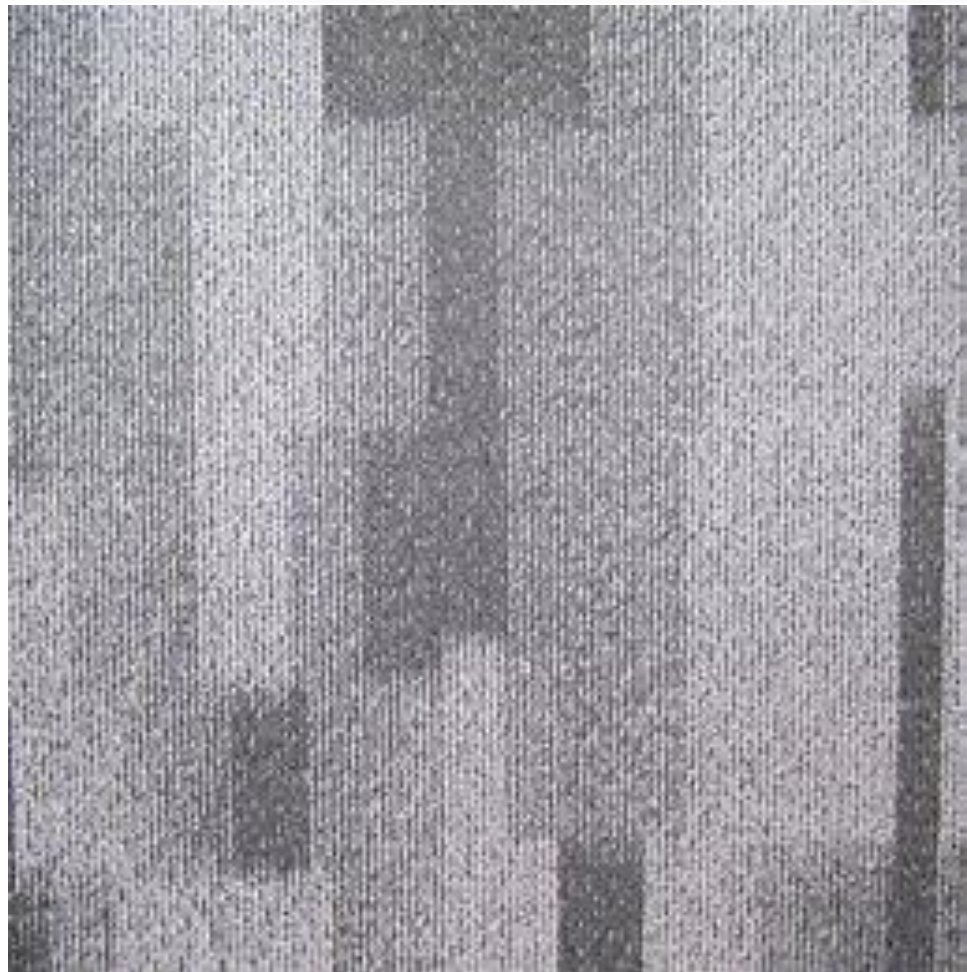
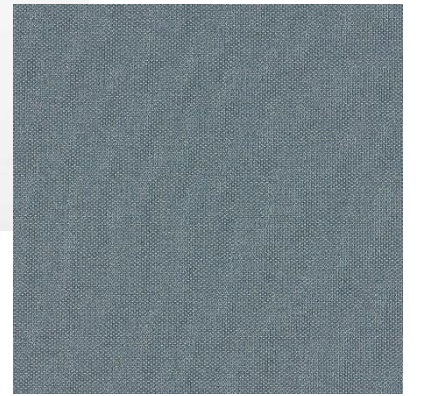
Lounge Area



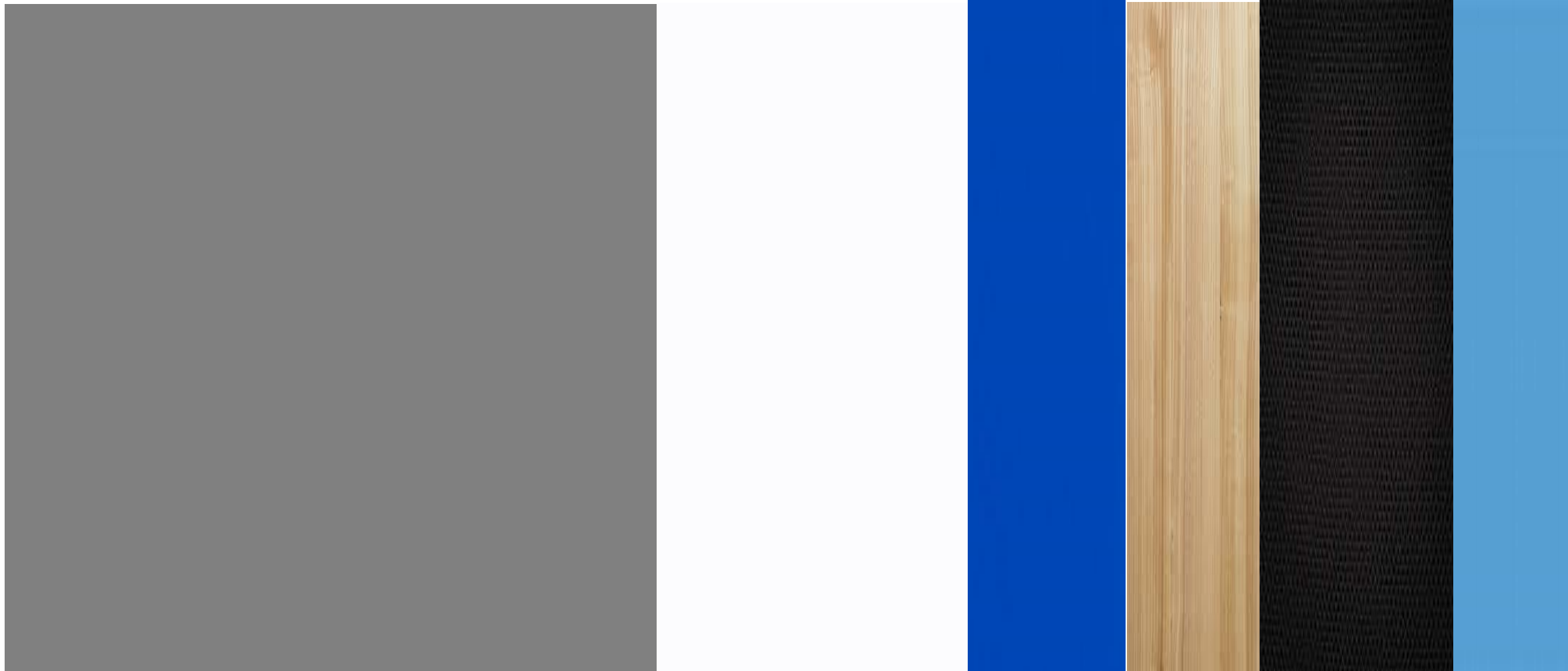
Lounge Area



- The lounge area has a wooden finish on the table
- Cool tones to not distract while working
- Pop of color with the light green/gray board



Color scheme



- This color scheme resembles the beach with the cool colors
- Cool colors make the space seem cleaner and more put together
- The contrast between light and dark give the space a more open feel

Walkthrough

<https://www.youtube.com/watch?v=jtiJioQqXMM>

