



Lisa Duerr – Project Manager

Scarlett Salter – Communication Manager

Nicole Thomas – Time Manager

IDSN 4600

Spring 2016

TSDesigns

CONCEPT

- ECU Students and their lifestyle
- Promoting the skills and studies generated by ECU students.
- Incorporating organic and fresh foods – which encourages awareness to lead healthier lives.
- Displaying merchandise created by ECU students and local artisans.
- Incorporating architectural details



TSDesigns

PROGRAM

Although this space will be run by and supported by various departments and programs across ECU's academic board, this project is separate from ECU and is not operated in conjunct with the university.

The environment we intend to create is one of relaxation and comfort, but also a place where people from the community and ECU students can display their talents. This space can accommodate: live music and performance, art and sculpture shows, premade/organic snacks and drinks.



TSDesigns

RETAIL DESIGN RESEARCH

The stimulation people obtain from entering a retail store effect their memories and emotions. They add to the experiences people have when they are shopping in person' rather than online. As stated by Lindstrom, "our emotions are linked to the information gathered through the senses". If a retail store has a positive effect on someone, they are more likely to make a purchase or return to that store.

POP UP RETAIL

This type of retail is known as an unannounced, quick start opening of a retail shop to rapidly draw in customers. These stores then disappear or alter into a different retail store in order to meet the preferences of potential customers.

<http://www.drs2010.umontreal.ca/data/PDF/111.pdf>
http://trendwatching.com/trends/POPOPUP_RETAIL.htm



TSDesigns

FLUE-CURED TOBACCO BARN

Two major objectives of Flue – Cured Tobacco

- 1-Provide temperature and humidity conditions that will encourage certain desirable chemical and biological changes to take place
- 2-Preserve the leaf by timely drying to retain quality.

Curing is more than drying the leaf. It improves chemical and physical changes that are necessary for high quality cured leaf.

High flue and insurance cost involved in curing tobacco emphasizes the importance of proper barn construction.

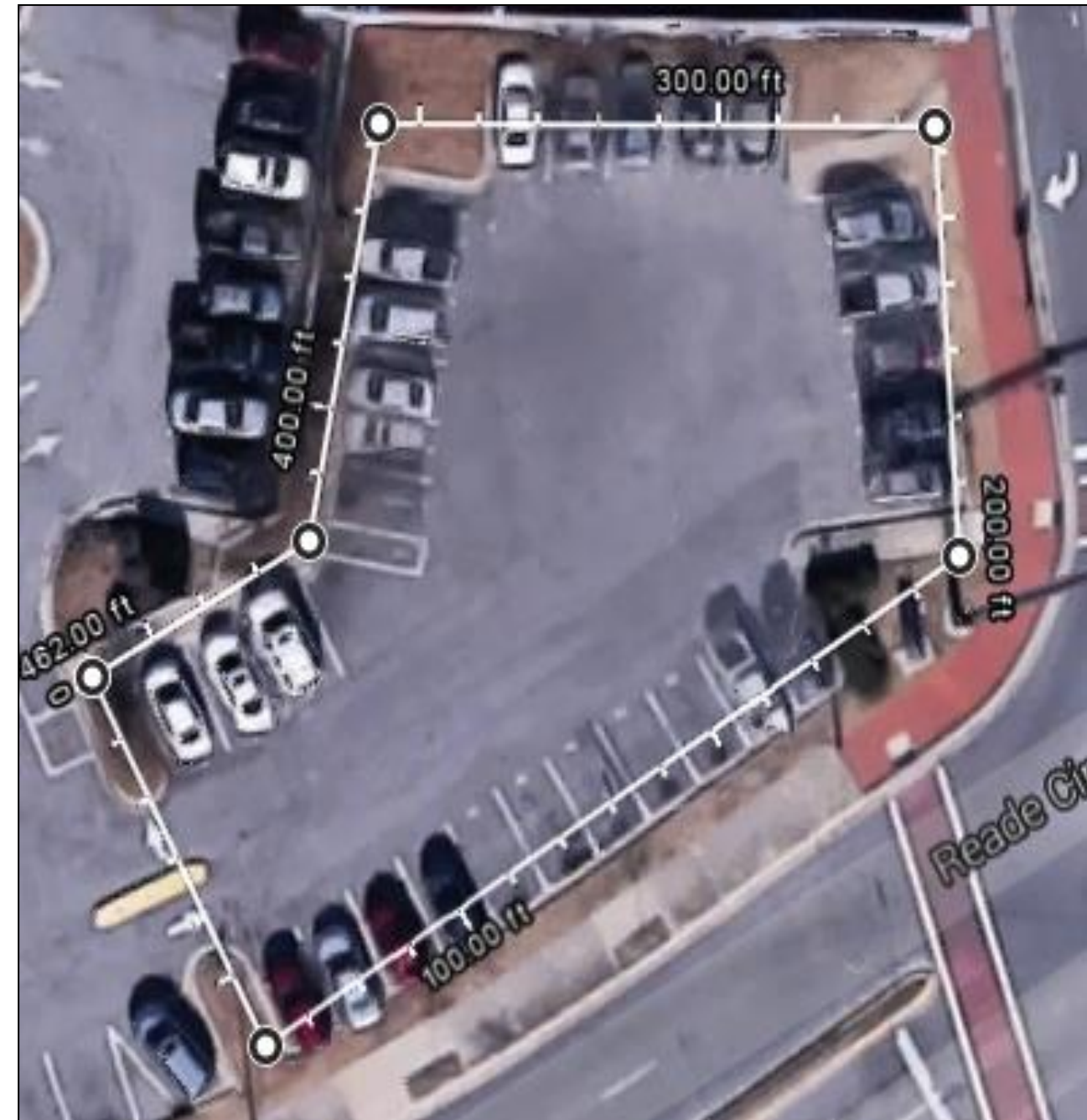
Most tobacco barns are being operated with holes in the gable ends, openings under the eaves between the rafters. And ridge ventilators that cannot be closed.

Good wall materials:

- 1.For efficiency and low heat loss, log cabin is one of the best, although it is wasteful of timber
- 2.Frame barn with a layer of boards or insulating boards is also effective

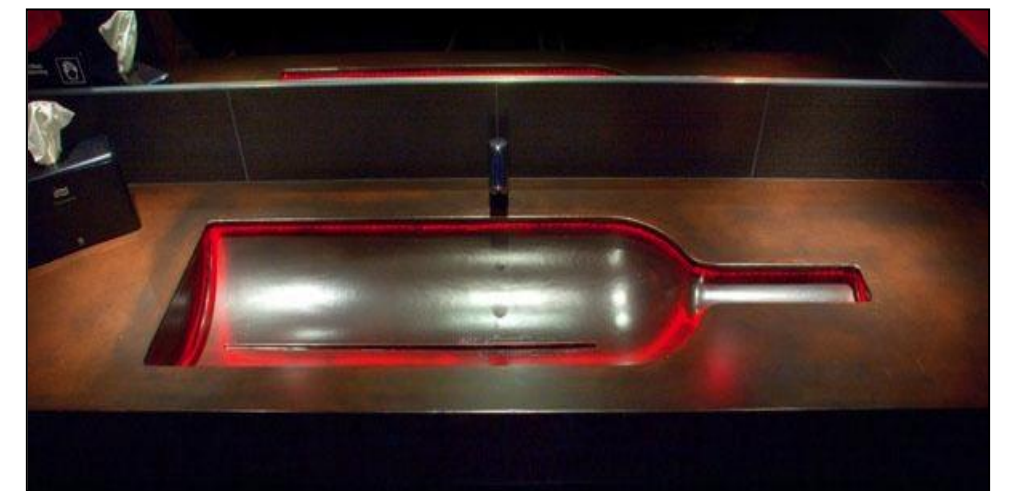
Solid sheathing is preferred on the roof to reduce heat loss and extreme changes of temperature

Flue Arrangement: This should be located high in the back of the furnace and should be 10 inches above ground level.



TSDesigns

CAFÉ INSPIRATION



TSDesigns

CAFÉ SKETCHES



TSDesigns

CAFÉ - RENDERED PERSPECTIVE



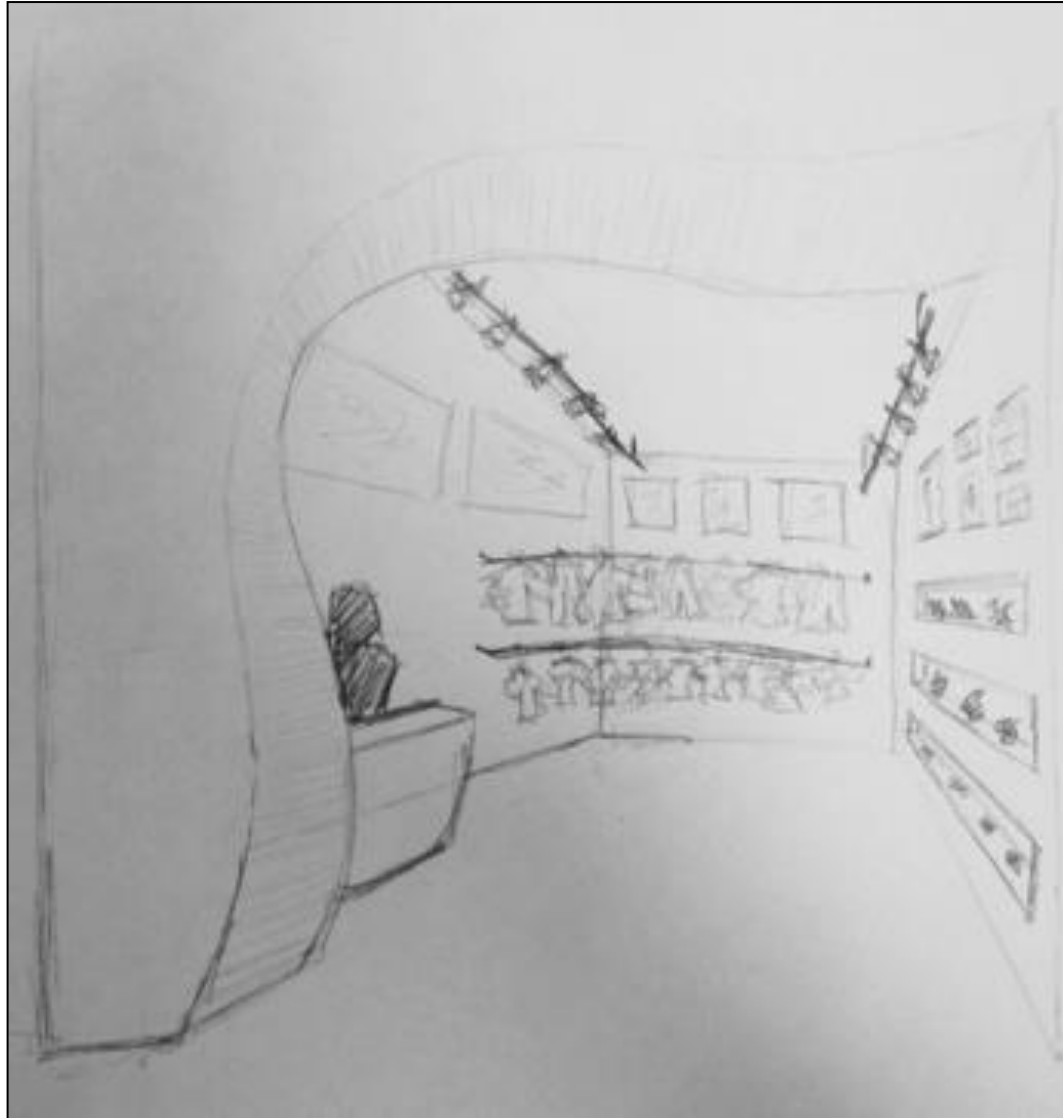
TSDesigns

RETAIL INSPIRATION



TSDesigns

RETAIL SKETCHES



TSDesigns

RETAIL SPACE - RENDERED PERSPECTIVE



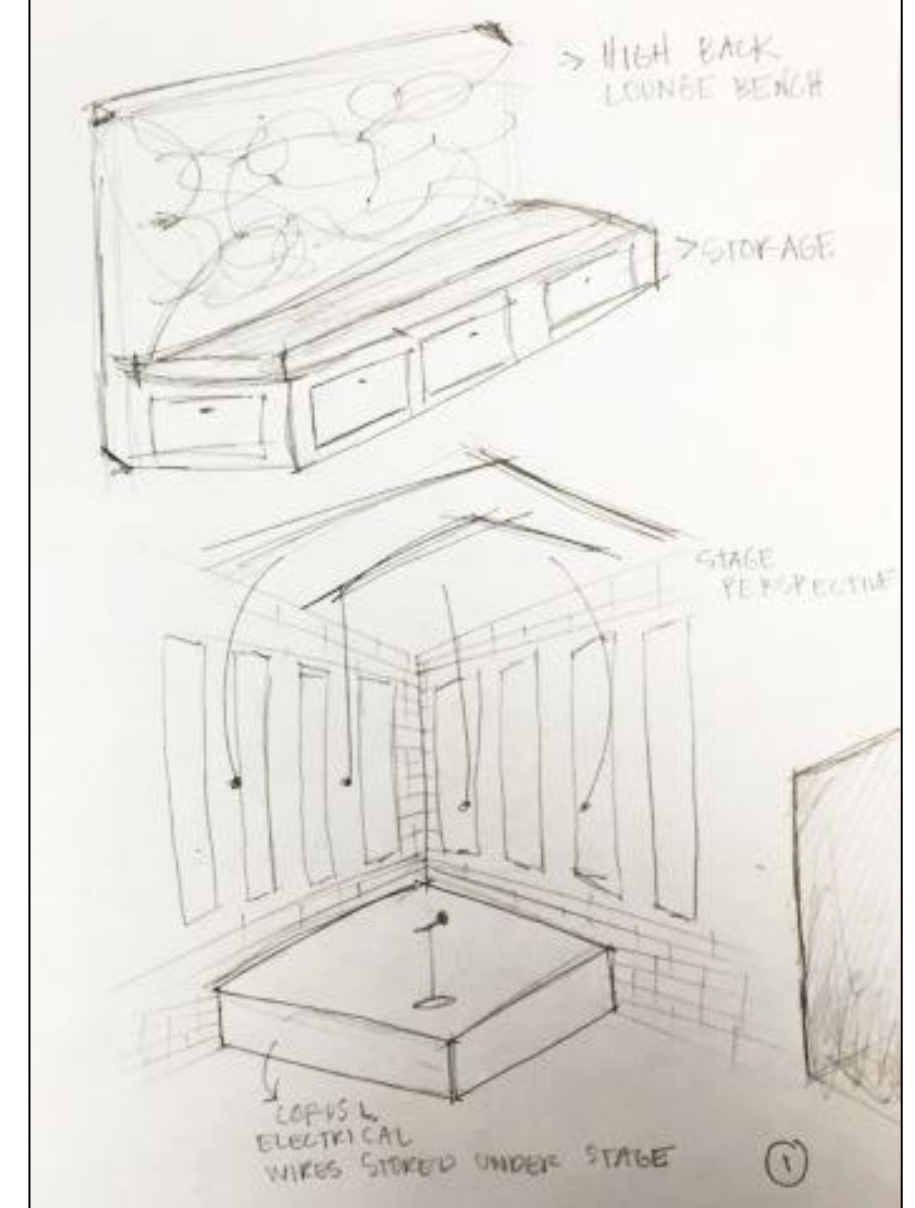
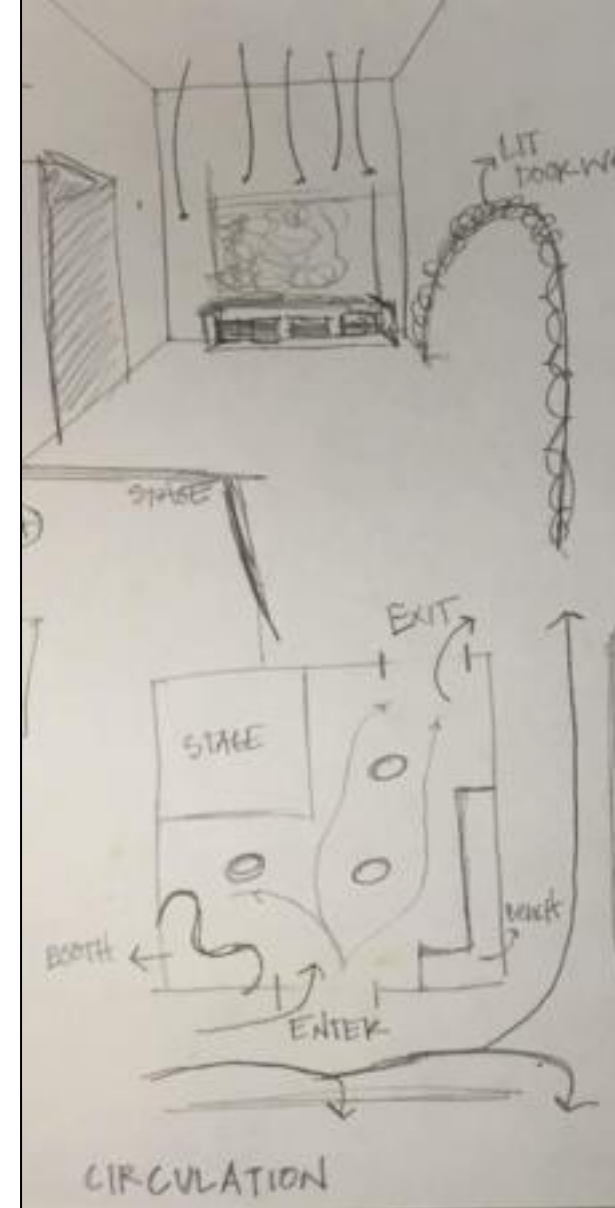
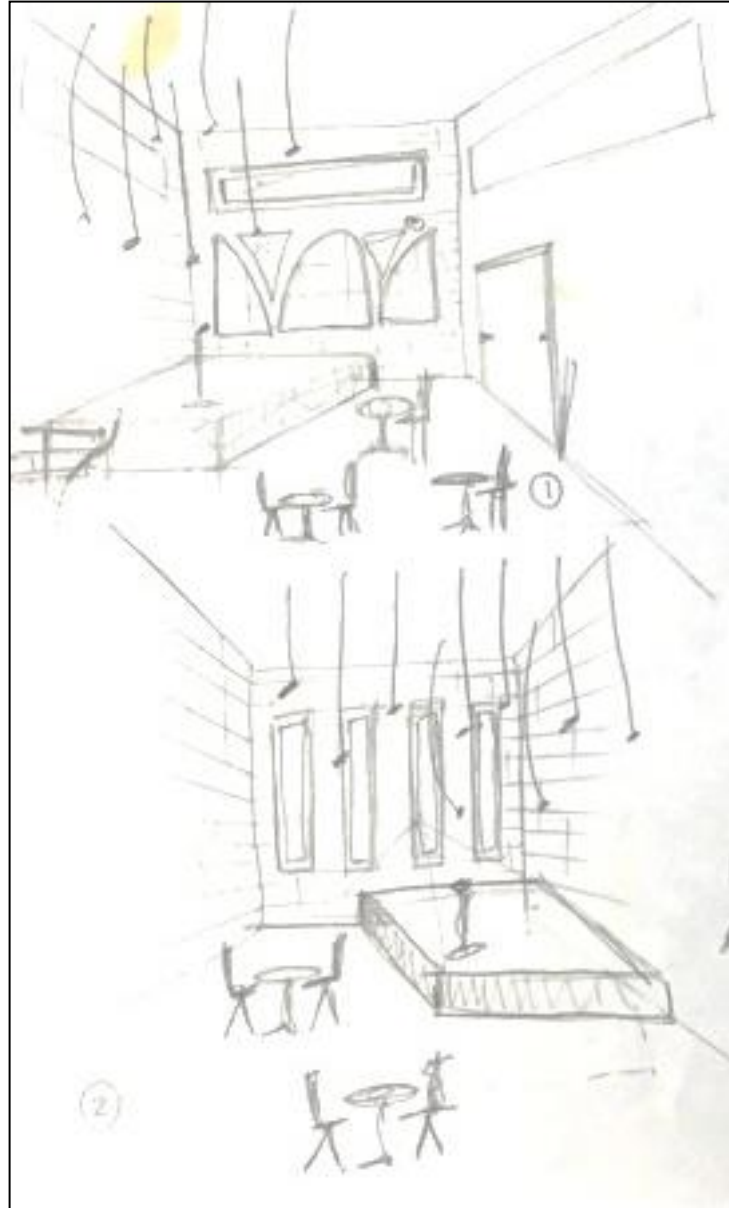
TSDesigns

MULTIPURPOSE ROOM INSPIRATION



TSDesigns

MULTIPURPOSE ROOM SKETCHES



MULTIPURPOSE ROOM - RENDERED PERSPECTIVE



TSDesigns

FLOOR PLAN OF AVI'S PLAZA



TSDesigns