

Carlee Craze | Christin Cunningham | Georgina Hendricks

Client Identity

Why are they using this space?

- Central location, competitors are also in the building, show off their stuff/product

What is their product?

- Furniture, mostly office/commercial, residential line is studio, high end products

Who are competitors?

- Steelcase, Herman Millar, Kimball, Haworth, Teknion



work·sta·tion

/ˈwɜːk, stɑːʃ(ə)n/ 

noun

plural noun: workstations

1. a desktop computer terminal, typically networked and more powerful than a personal computer.
2. an area where work of a particular nature is carried out, such as a specific location on a manufacturing assembly line.



Timeline:

- 1904 Open office spaces for efficiency and overcrowded workspace. Designed for bosses in private offices to look down on.
- 1960 Spaces started to vary in position allowing for more interaction between workers.
- 1970 First modular furniture systems with low dividers. Also known as cubicles -everyone loves them!
- 1980 Cubicles caught on. Quick and easy way to create office spaces for workers.
- Present: Trying to leave cubicles for open concept again. Many variations of desk systems are made to comply with workers wants.

Knoll

Knoll Office Systems

3 Primary Design Variables:

- Enclosure
- Reconfigurability
- Technology
-

Systems have different bases:

- Panel Based
- Desk and Table Based
- Storage Based

Knoll also offers Private Office Systems

New Product Line

Rockwell Unscripted – “unrivaled work experience to let spontaneity unfold”

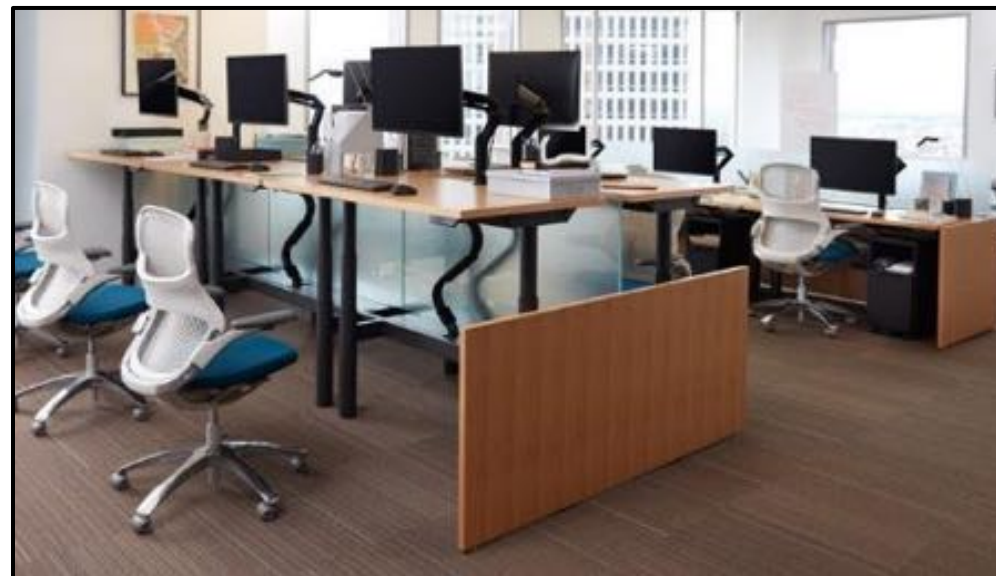
- Each product has its own selection of Finishes and Fabrics
- Product Gallery
- Dimensions

AutoCAD/Revit/SketchUp/2020 files



Knoll Office Systems:

- Rockwell Unscripted
- Antenna Workspace
- Antenna Telescope
- Auto Strada
- Dividends Horizons
- Reff Profiles
- Morrison
- Template
- Rockwell Unscripted Creative Wall



Steelcase®

Steelcase is devoted to renew the style and design of the office. There are endless options to rearrange the systems to fit the needs of the space.

Systems have different options:

- Freestanding
- All-in-one
- Beam and Panel
- Casework
- Private Office

All Products include:

- Selection of Finishes and Fabrics
- Product Gallery
- User/Specification Documents
- AutoCAD/Revit/SketchUp files
- Planning Ideas





Herman Miller

- At Herman Miller, we want you to do great things. That's why we make problem-solving designs that are as beautiful as they are useful.
- Commonly associated with “modern” furniture.
- Known as an innovator in contemporary interior furnishings, solutions for healthcare environments and their related technologies and services
- Began as Michigan Star Furniture Company in 1905, was purchased by businessman Herman Miller for son-in-law, D.J. De Pree in 1923.
- Most widely known for “Eames Chair”



Subsidiaries

Design Within Reach

- Largest modern retailer of authentic modern furniture and accessories.

Nemschoff

- Joined in 2009, number one brand in healthcare furniture by Contract Magazine for 8/10 years.

Maharam

- Textiles use inspiration from history and interdisciplinary exploration with four main themes: Utility, Technology, Tradition, and Luxury

Geiger

- Joined in 1999 with a passion for woodworking and well-crafted



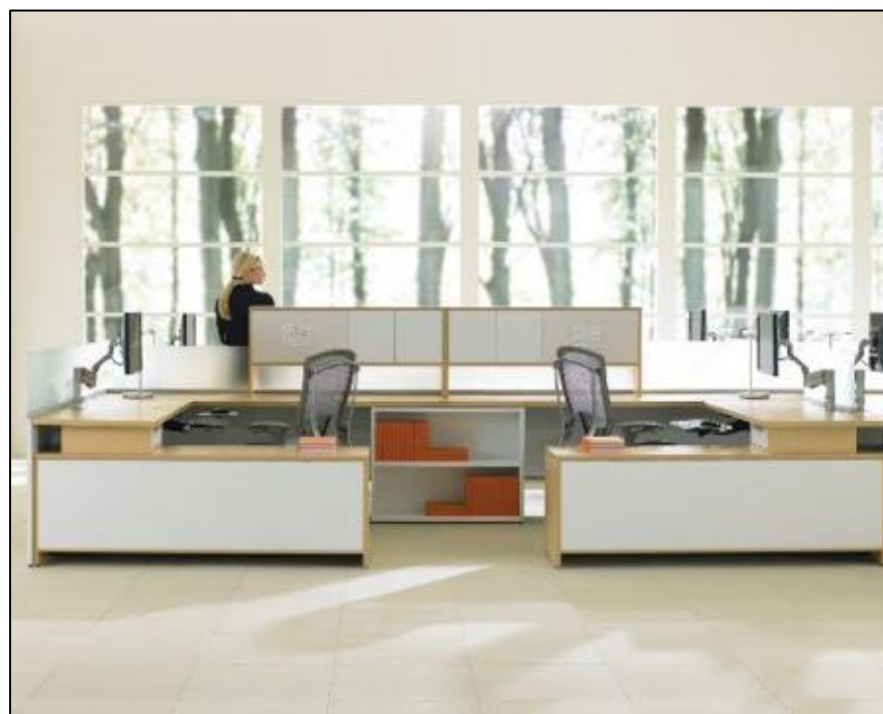
teknion

Teknion Desking System:

- upStage
- Interpret
- Height Adjustable Bench
- Expansion Cityline
- Expansion Desking

- ie
 - Marketplace
 - Teknion Panel System
- Teknion also Produces:

- Casegoods
- Architectural Products (Built In)
- Storage



This company is based around producing products that are sustainable and centered around human needs.

Designed to make people feel “Welcome, Empowered, Connected, Calm, and Comfortable.”

The company supports other organizations and uses environmental programs to ensure their products are safe and sustainable

HAWORTH®

Work happens everywhere. Haworth designs and manufactures product solutions that help you create inspiring spaces where people can perform their best—at work, on the go, and at home.

A world-class offering of lifestyle designs, the Haworth Collection brings an ordinary workspace to life.



Desking Systems:

- Compose
- Connections
- Openest
 - Double Desk
 - Privacy Booth
 - Privacy Desk
 - Single Desk
- Patterns
- Reside

<http://www.haworth.com/>





Kimball® International

- Began in 1970 as a family business, maintain that spirit throughout the company.
- “Materials Expert First”
- Product solutions that create a sense of place where people can achieve all that is possible.
- Workplace environments for the future.



Kimball Health®
Kimball® Learning
Kimball® Office



Site Profile

The Merchandise Mart - Chicago, Illinois

Location

- Corner of W Merchandise Mart Plaza and N Wells St

Building Architecture

- Art Deco
- Constructed in May 5th, 1930
- Concrete, cement, stone, steel construction

Tenant Location Within Building

- South East Corner

Tenant Square Footage

- ~18700 Sq. Ft.

Sunlight

- Sun rises in the East
- Sun sets in the West



Site Analysis

The Merchandise Mart - Chicago, Illinois

Neighborhood

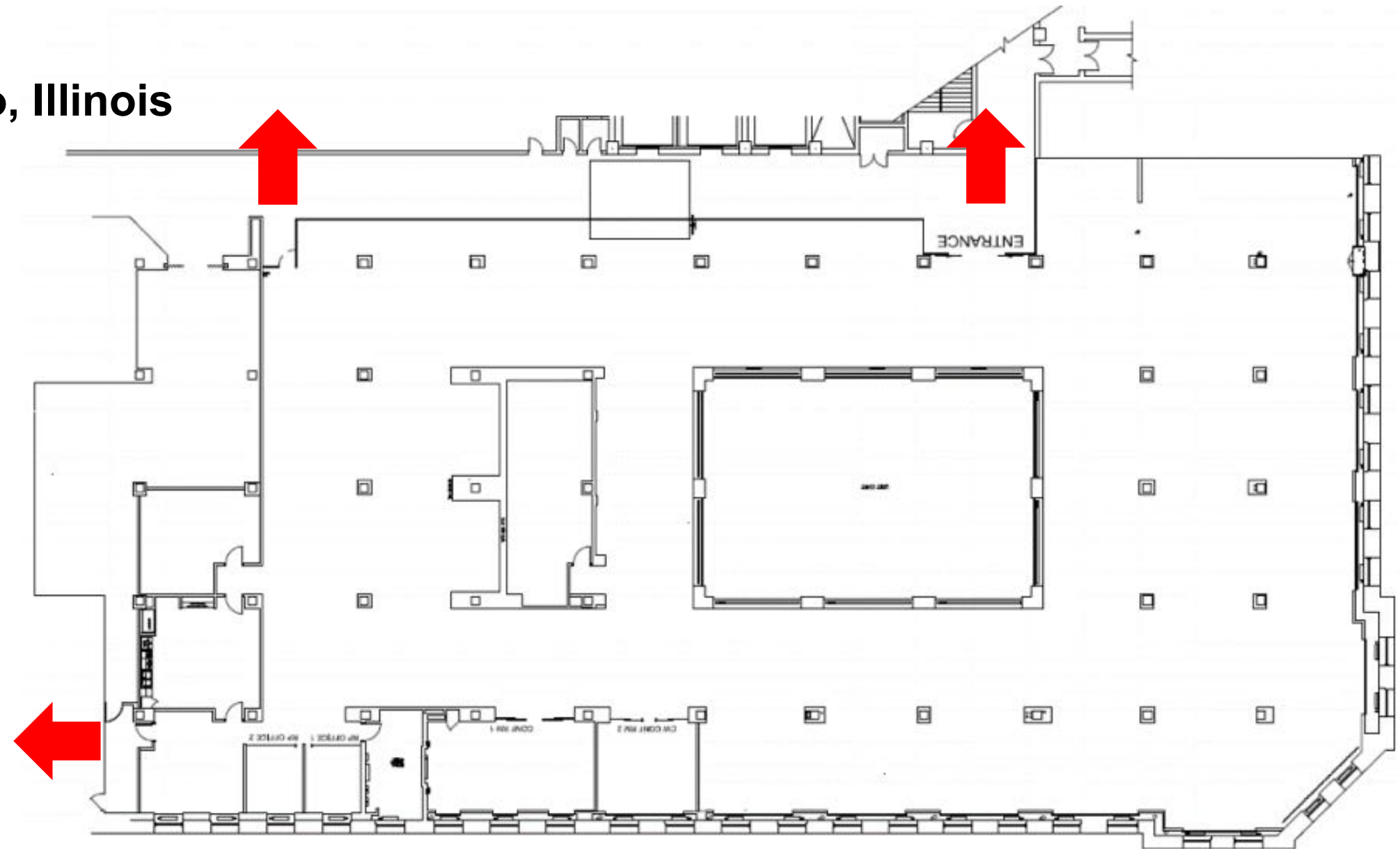
- Stylish Urban neighborhood, located on the banks of the Chicago River
- 1970s-1980s
 - Factories were transformed into work and retail spaces
- Hub for creativity and entertainment

Egress Points

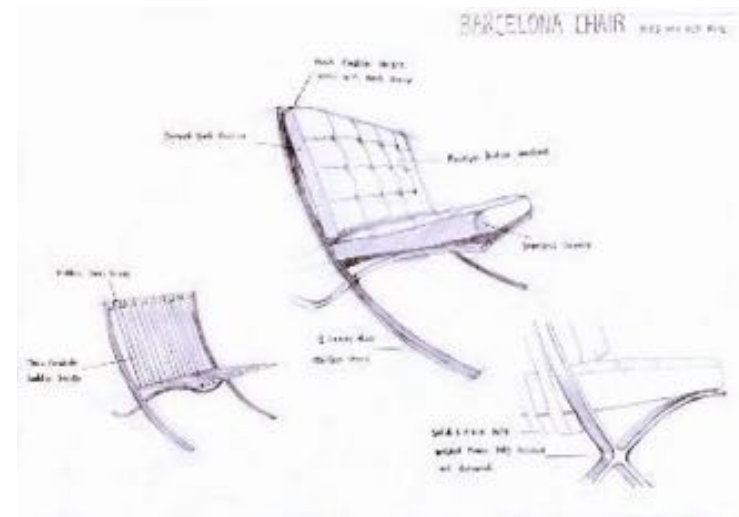
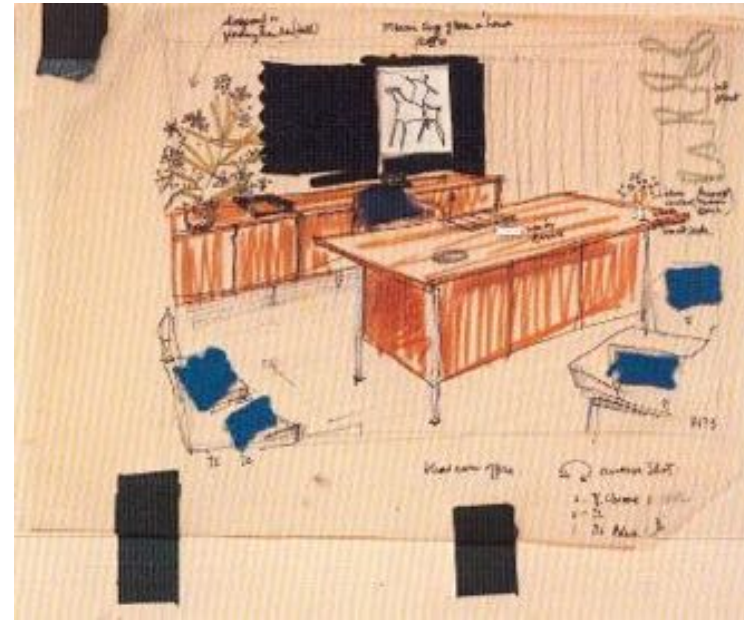
- 3 egress points located by the red arrows

Day Light

- South East Corner to receive most day light/heat gain
- East Side to receive moderate light but is blocked by surrounding buildings
- South Side to receive a significant amount throughout the day
- Light well to receive most light around noon

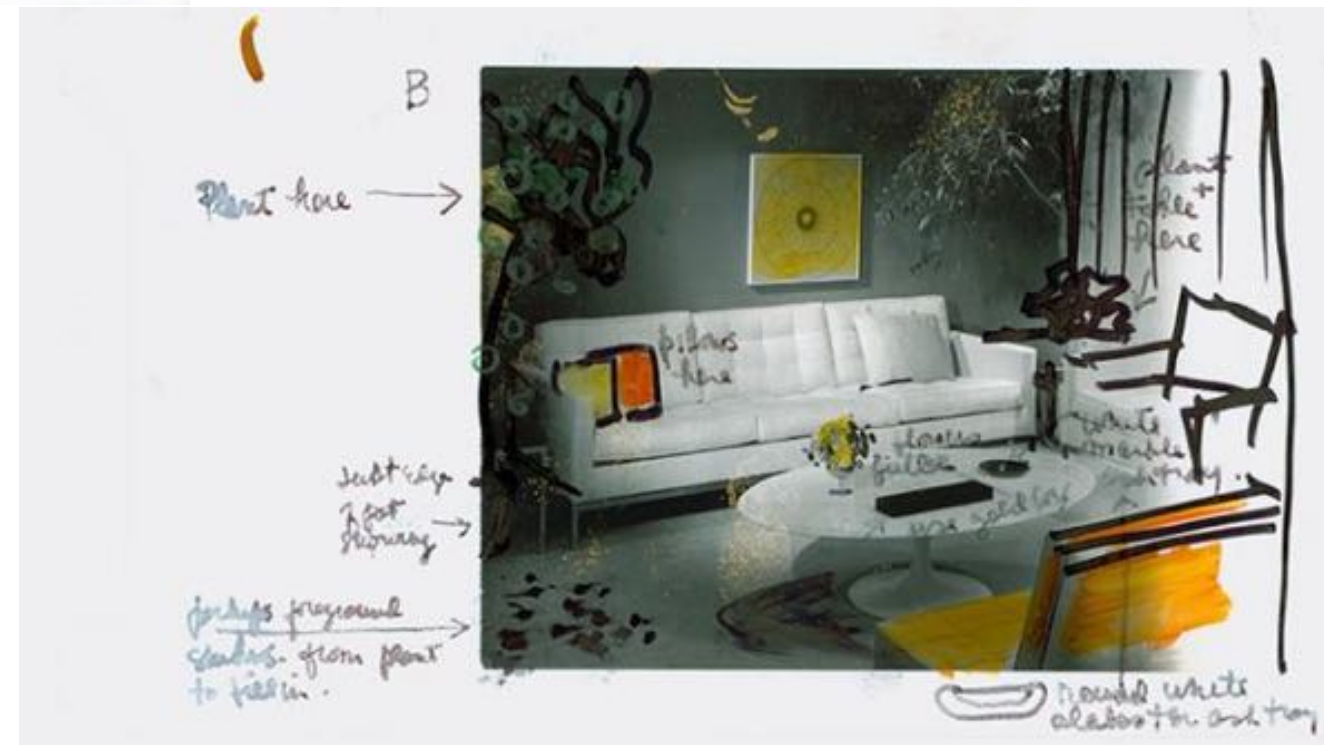


Concept Statement

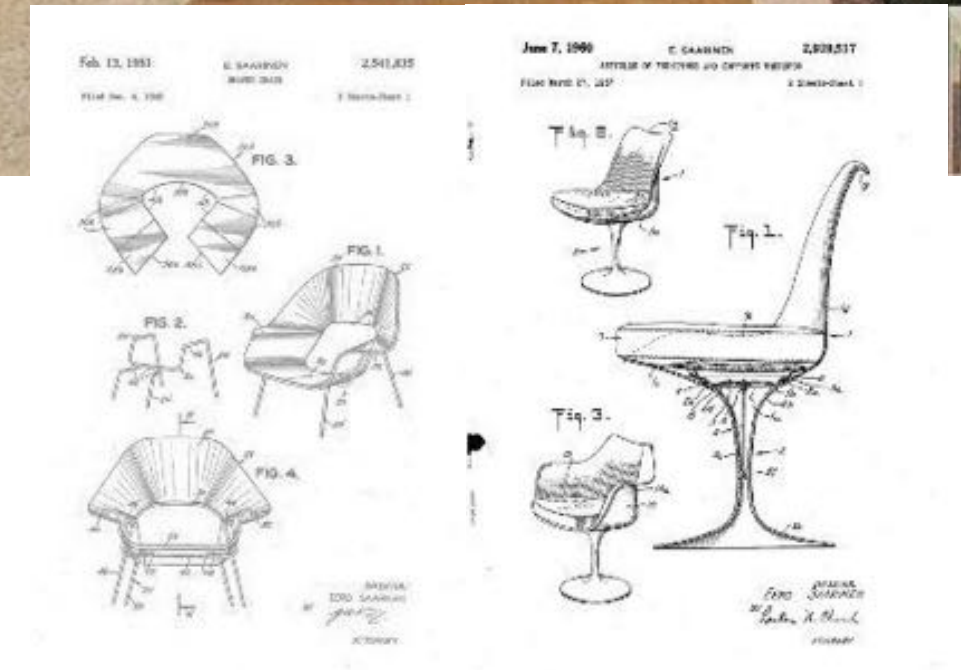
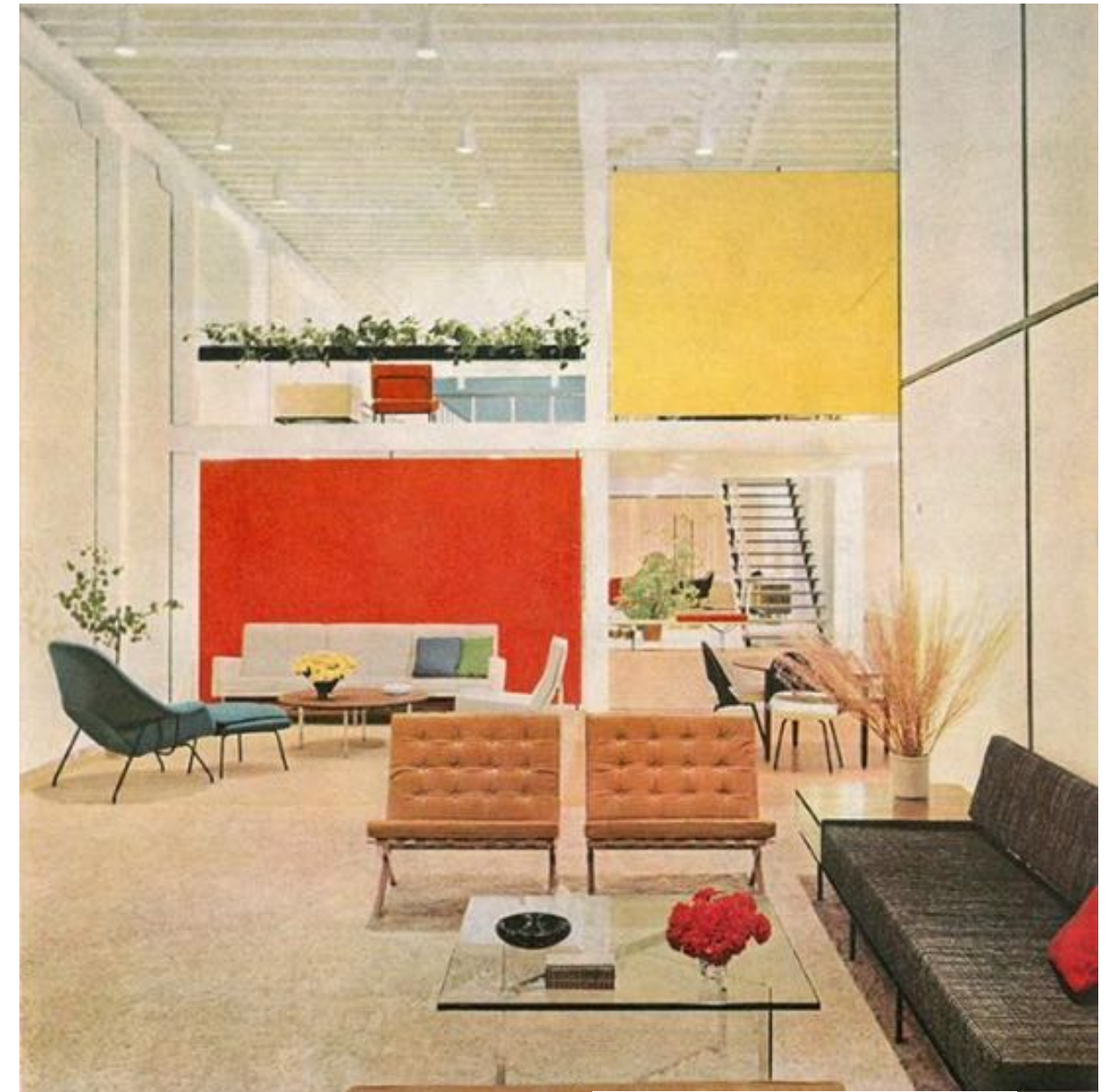


The Process of Progression

- Everything starts with an idea and progresses into something more.
- Knoll Design - Showcase the images of the schematics, industrial designs, space planning designs, production images of Knoll products layouts, prototypes, inventions, etc.
- Designing rooms, furniture, and textiles all begin from schematics. Knoll products include collaboration, innovation, trial and error, and perseverance, we want to showcase that process. These rough design sketches evolve into iconic pieces of the Knoll brand.
- FilzFelt and Spinneybeck - show the process of collaboration, making the felt, making the leather, the college group they partnered with, innovation of design with the panels - schematics, errors, failures, progress to the final project
- New Designers - David Adjaye and David Rockwell, the failures, the schematics, how the designers began to work with Knoll - development of the chairs and creative walls



Inspiration Images



Challenge Resolution Statement

Challenges

- Incorporating the 5 zones from Knoll and incorporating Knoll's past with the future.
- Lack of sunlight throughout the space from the light well.
- Acoustical issues from the city and the subway.
- Limitations due to slab to slab height

Resolutions

- Partnering classic designs with new innovative designs from various collaborations.
- Use FilzFelt to direct light and acoustics within the space.

