



TRIPLE  
YOU  
DESIGN

Portfolio 1  
IDSN 3202  
Spring 2018

Katie Warren, Erin Weisman, Hannah Wiser



THE FIRM: TRIPLE YOU DESIGN

**Erin Weisman** – Research Manager

**Katie Warren** – Communications Manager

**Hannah Wiser** – Time Manager



“Our spaces are enlightening, inviting others to create mindfully.”

Warren, Wiser, Weisman



THE CLIENT:



THE SPACE:

**The Merchandise Mart, Chicago, IL  
Showroom Design**

**80<sup>th</sup> Year Anniversary of Knoll**

At the Mart, Knoll is...

Showcasing high-end office furniture and systems

Competing with other furniture companies for foot traffic



**Competitors:** Steelcase, Herman Miller, Teknion, Kimball



# TRENDS IN HISTORIC PRESERVATION

## Challenges

- Receiving preservation funds
- Modern buildings are scrutinized

## Councils

- The National Trust for Historic Preservation

## Examples

- Frank Lloyd Wright's Falling Waters
- Pope-Leighey House
- Eero Saarinen's Trans World Airlines Flight Center at Kennedy International Airport.

## Goals

- To convert historic buildings into facilities we use every day



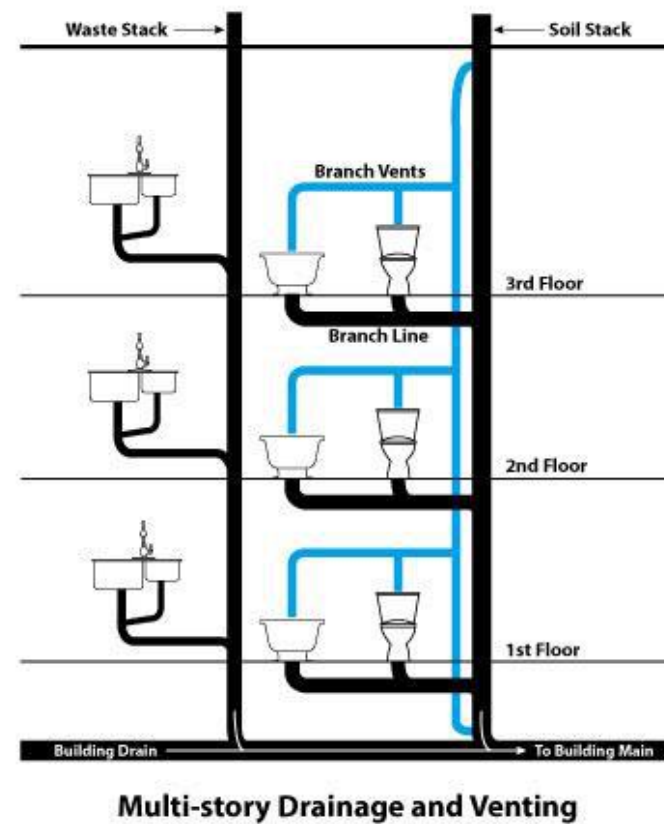
# SUSTAINABLE BUILDINGS: PLUMBING DESIGN

## Specifications

- Fixtures with low water use
- Pressure Reduction Valves (PRV)
- Insulated Pipe Systems

## Installations

- Cluster areas of water use
- Minimize run lengths
- Optimize pipe diameter
- Use fewer bends



## Systems and Monitoring

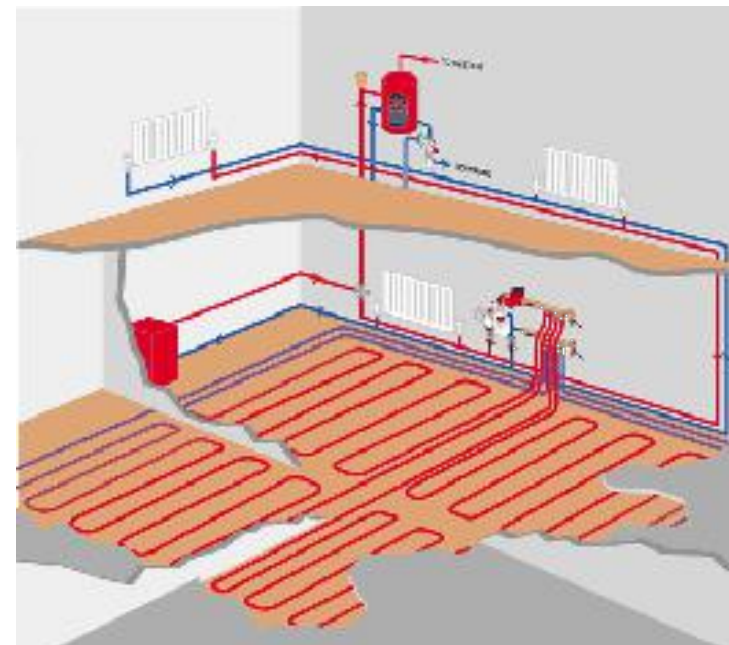
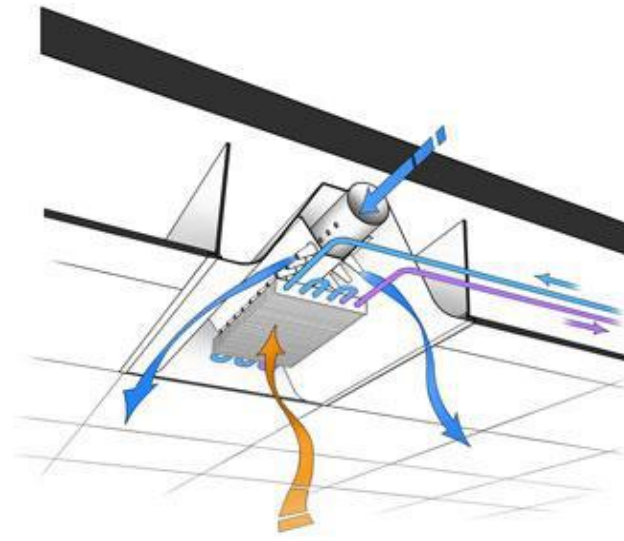
- Prevent and minimize leaks
- Rain sensors deactivate irrigation systems during rainfall
- Reuse grey water for site irrigation
- Recover and reuse water from cooling towers and boilers



# SUSTAINABLE BUILDINGS: MECHANICAL DESIGN

## Specifications

- Energy Star
  - Dishwasher
  - Clothes dryer
  - Clothes washer
  - Dehumidifiers
  - Air filters
  - Freezers
  - Refrigerators
  - Windows
  - Ceiling fans
  - Ventilating fans
  - HVAC systems
  - Furnaces
  - **Boilers**
  - Computer monitors



## Monitoring

- Simulate HVAC loads using software
  - Revit
- Install devices to monitor system use

## Installations

- High performance HVAC systems
- Chilled beams
- Radiant panels



# SUSTAINABLE BUILDINGS: ELECTRICAL DESIGN

## Specifications

- Energy Star LED bulbs
- Contract with a Green Power Provider



## Installations

- Solar photovoltaic systems
- Provide lighting options for various levels of need
- Utilize natural daylight
- Architectural light shelves
- Occupancy light switch
- Design light systems that emit less light pollution
- Wind turbines
- Biomass Energy
- Low-impact hydro

## Monitoring

- Comply with energy Policy and Conservation Act of 1975 (EpcA)
- Energy use can be monitored using meters
  - Separate lighting and receptacle panels for monitoring
- Properties Face Power Density Requirements
- Commissioning



# SPACE PROGRAM

- Open work stations
- Private offices
- Open offices
- Collaborative work space
- Lounging / Ancillary Space
- Conference Rooms
- Entice customer to stay
- Colorful and engaging
- Café
- 2 Textile sample rooms

## Requirements

80% of specification to be Knoll product

Utilize 5/8 Knoll Constellations

Illustrate the 5 Principle Workstation Areas



## Design Characteristics

Modernism and Bauhaus

Maintain Integrity of the Architecture

Collaborative

Workplace Productivity





# SPACE PROGRAM



## WORK AREAS

Space	Number	Unit Square Feet	Extended Sq. Feet	Location	Notes
<b>Totals</b>					
Workstation\ 1 (6X6)	49	36	1764		
Workstation 2 (6X8)	23	48	1104		
Workstation 3 (8X8)	10	64	640		
Office 1 (10x10)	10	100	600		
Office 2 (10X12)	5	120	600		
<b>Personnel Totals:</b>	<b>97</b>		<b>4708</b>		

### Department Summary

<b>Information:</b>	
Personnel	4708 Square Ft.
Equipment	6734 Square Ft.
<b>Sub Total:</b>	<b>11442 Square Ft.</b>
Circulation	1.54
<b>Total Program Usable:</b>	<b>18,700 Square Ft.</b>
<b>Total Plan Usable:</b>	<b>18,700 Square Ft.</b>

## SUPPORT SPACES

Space	Number	Unit Square Feet	Extended Sq. Feet	Location	Notes
Reception	1	400	400	Direct access to Broadcast, Executive	Waiting for 6, TV's
Conference Room Small (4 Occupants) 10X12	4	120	480		
Conference Room Medium (8 Occupants) 14X18	2	252	504		
Conference Room Large (20 Occupants) 15X33, 17' with width	1	300	300	Shared by all areas	Full AV
Pantry 10X15	1	150	150	breakroom	Coffee, sink, refrigerator, cabinets
Café	1	300	300		Full kitchen, seating
Lounge Space (Total)	1	3000	3000		
Textile Room	1	800	800		
Sample Room	1	800	800		
<b>Support Totals:</b>			<b>6734</b>		

### Interviewee:

Interview Date: \_\_\_\_\_  
 Revision Submitted: \_\_\_\_\_  
 Sign Off: \_\_\_\_\_

### Department Notes:

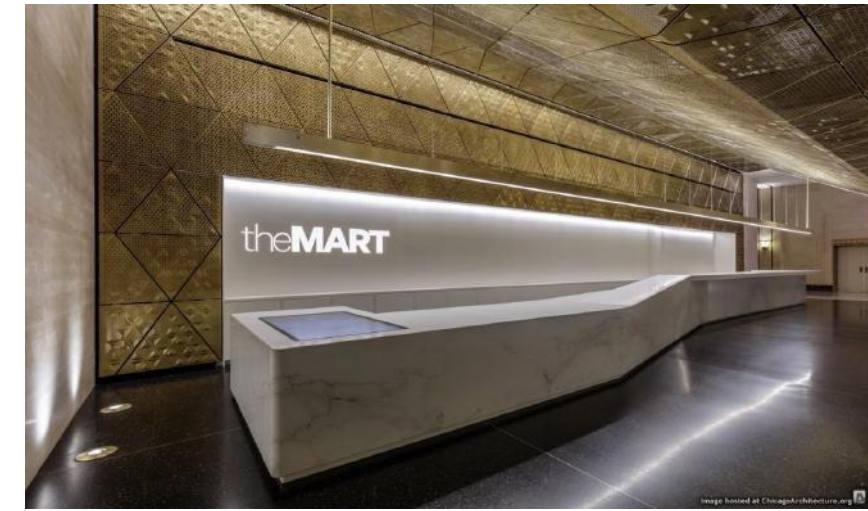


# SITE PROFILE

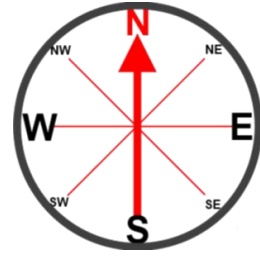
Knoll Merchandise Mart  
Showroom

22,000+ / Square Foot  
Showroom

Floorplan of the space  
to be designed



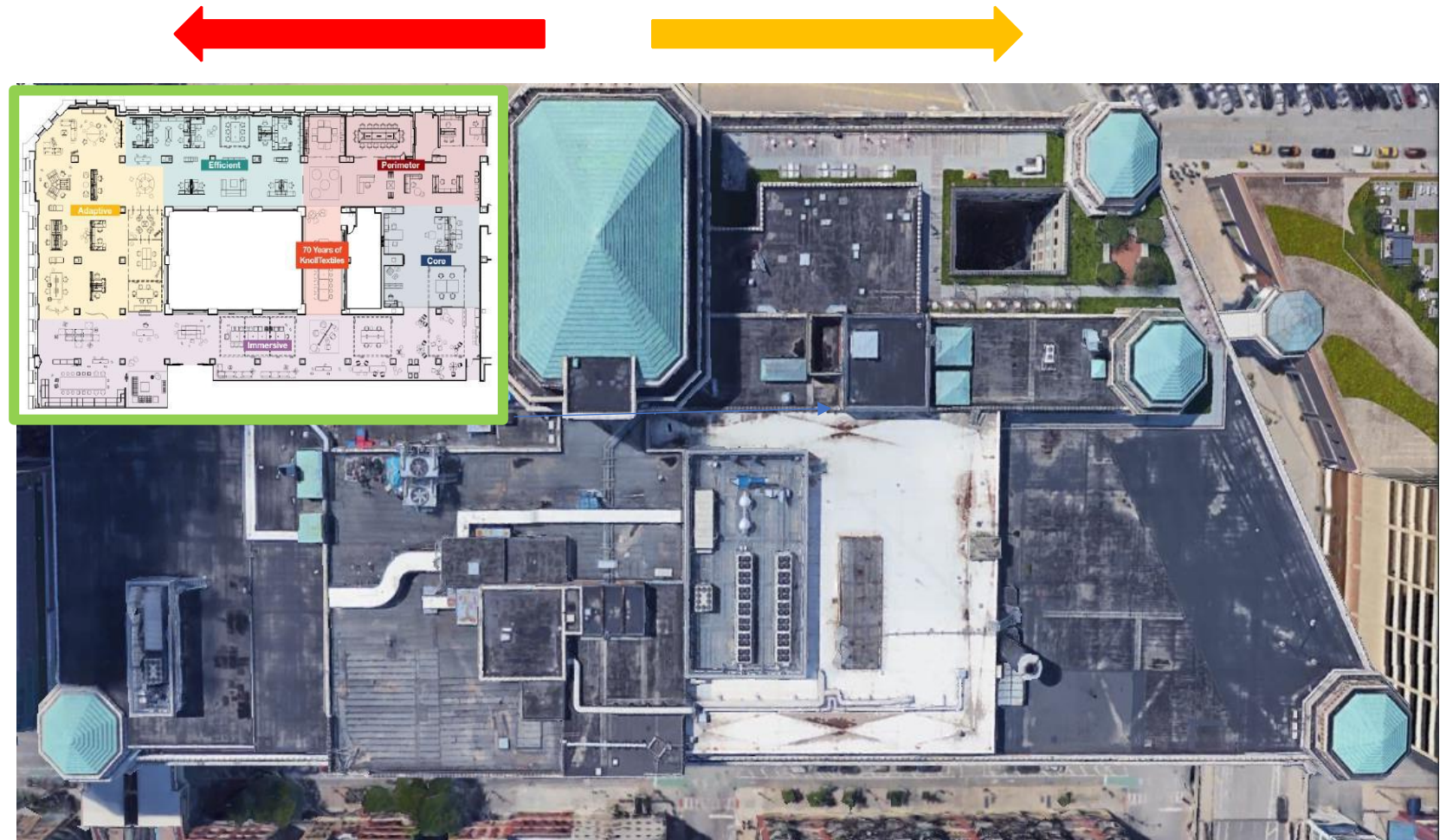
# SITE ANALYSIS



The building takes up 2 city blocks and is 25 stories tall.

Located downtown Chicago along the banks of the river

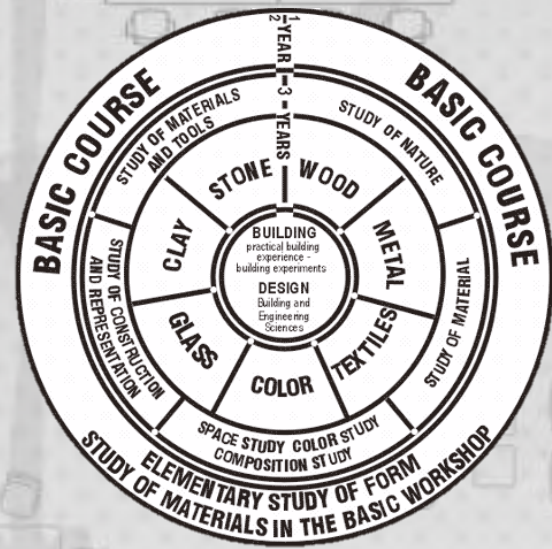
Most intense daylight would be from 1-2 pm which would be coming into the Northern windows along the design space



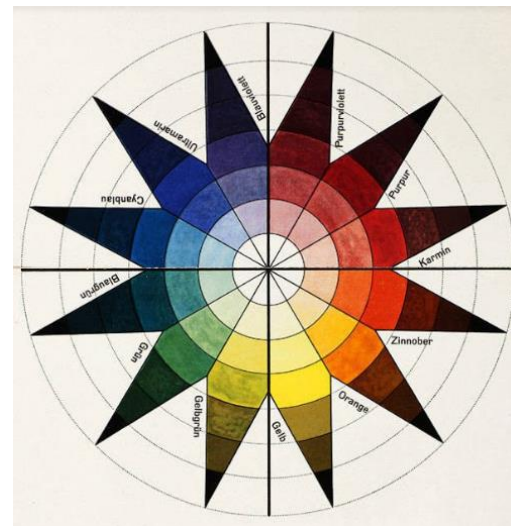
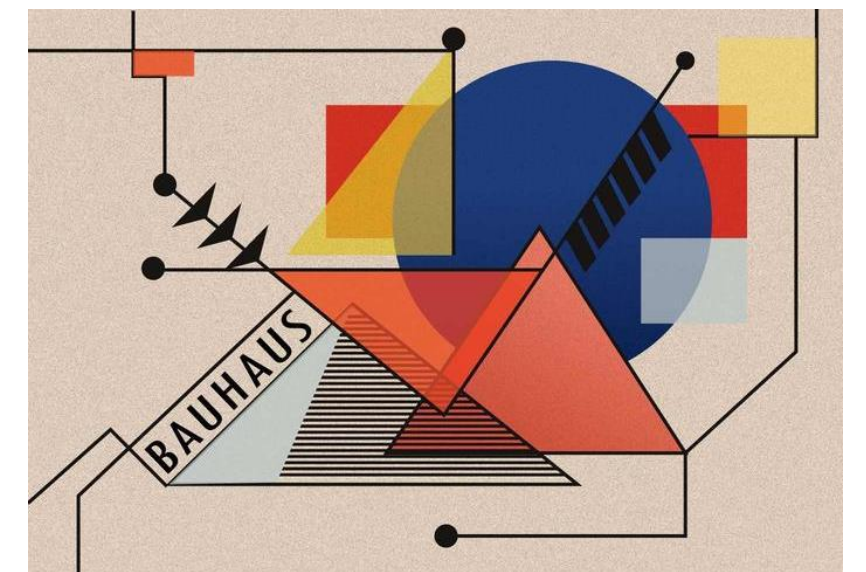
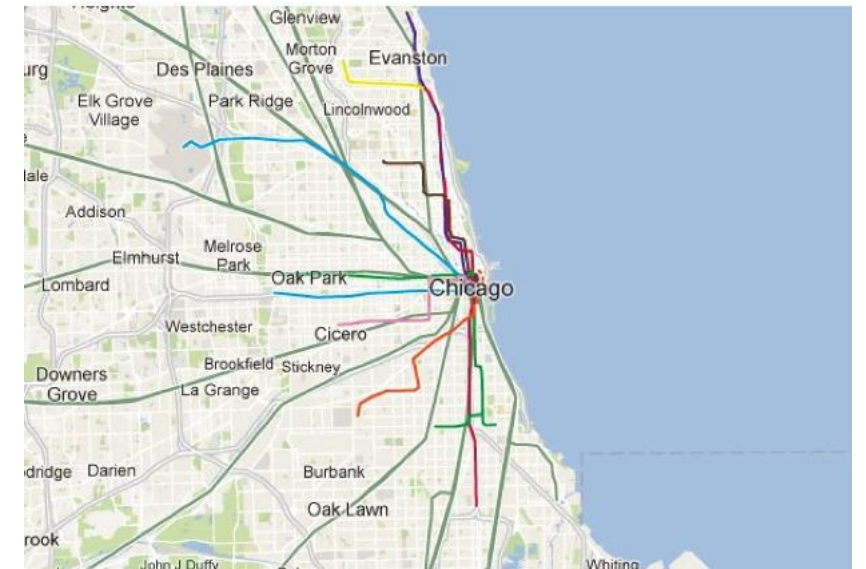
Street view in both directions from the entrance at the front of the building



# CONCEPT: REVOLUTION of Design



- Bauhaus and Modernism
- Woman Leaders: Florence Knoll
- Cohesion of Interiors and Exteriors
- Chicago's Railroad System
- History of Knoll's Constellations
- Immersive spaces in the workplace



e

# DESIGN CHALLENGES AND RESOLUTIONS

To follow research and market trend...

...implement the Five Principle Workstations

To promote mindfulness in the workplace...

...offer a variety of workstations designed to accommodate an array of activity

To commemorate the 80<sup>th</sup> anniversary of Knoll...

...design the progression of the space to reflect Knoll's history



**PRODUCTIVITY**  
is never an accident.  
It is always the result of  
commitment to excellence,  
intelligent planning,  
and focused effort.

PAUL J. MEYER

PRODUCTIVITYPLANNER.COM



# INSPIRATION IMAGES

