

The logo features the letters 'H' and 'P' in a large, bold, black serif font. Below them, the word 'morPHH' is written in a smaller, bold, black serif font. The background consists of several overlapping triangles in shades of gray and white, creating a geometric pattern.

HP
morPHH

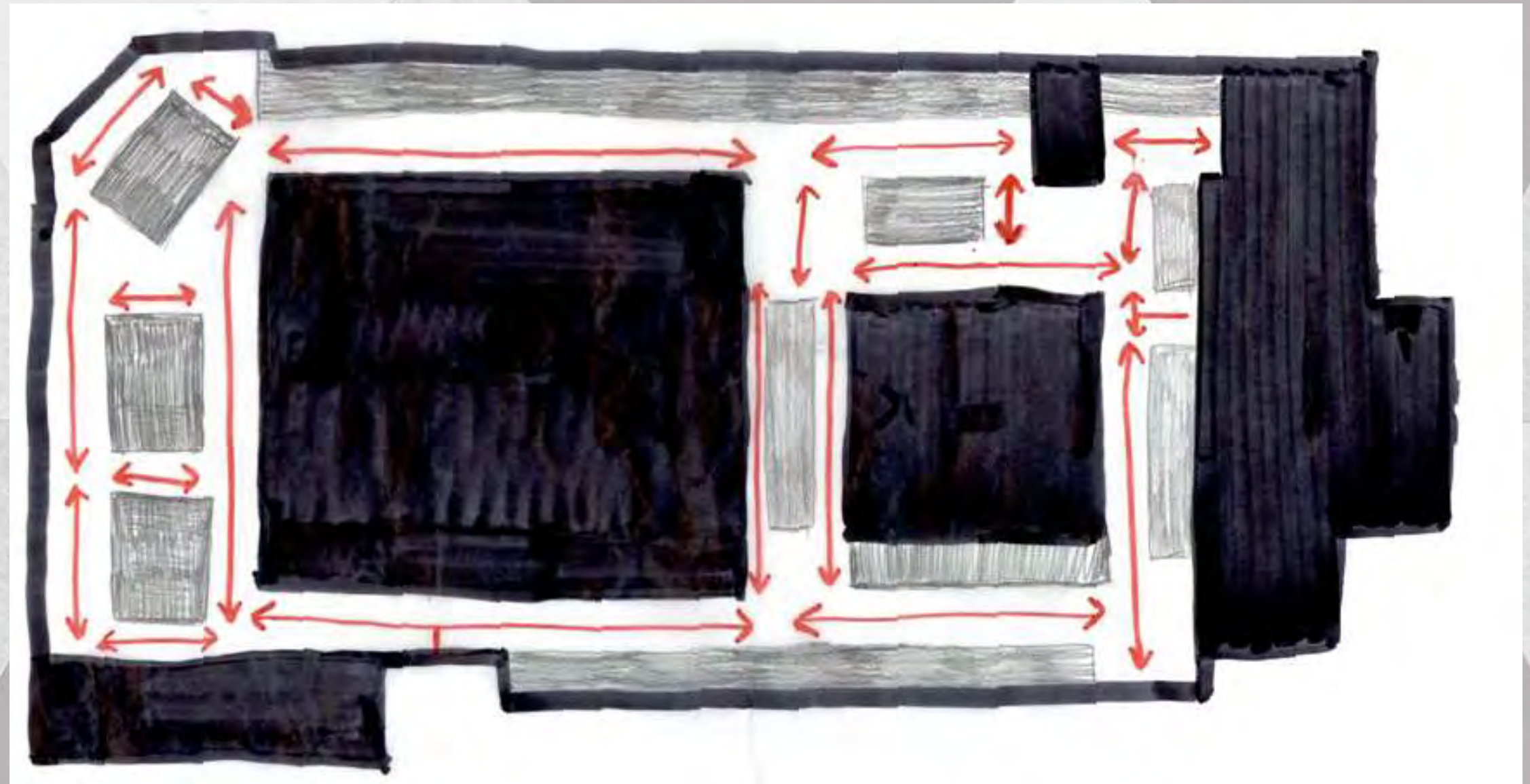
Transforming Spaces
Transforming Spaces

Avery Hallstrand, Katelyn Pruett, & Kiyah Harris
IDSN 3202
Professor Gustina
Portfolio 2
March 20, 2018

HP

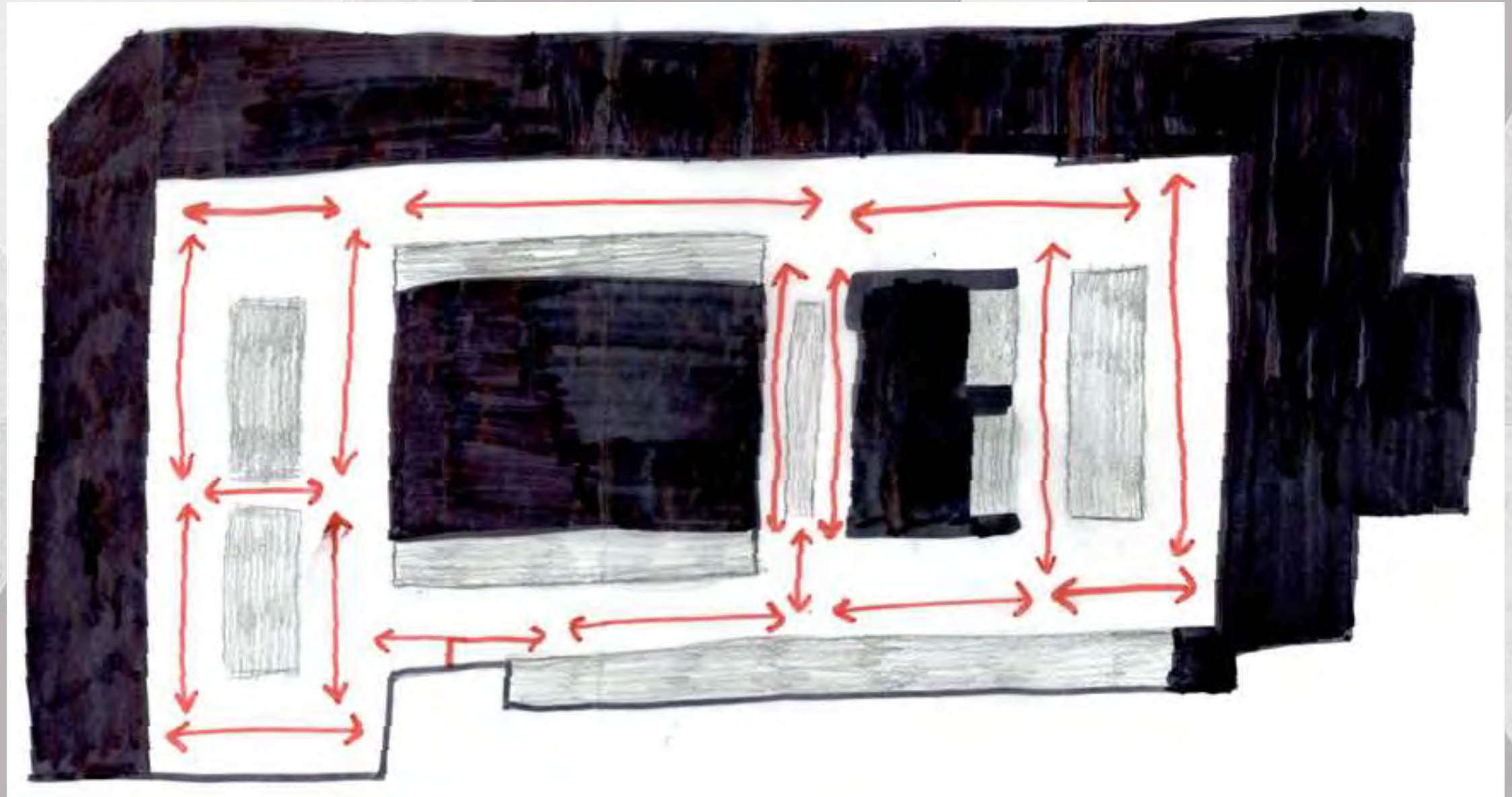
morPHH

Plan Circulation Sketches



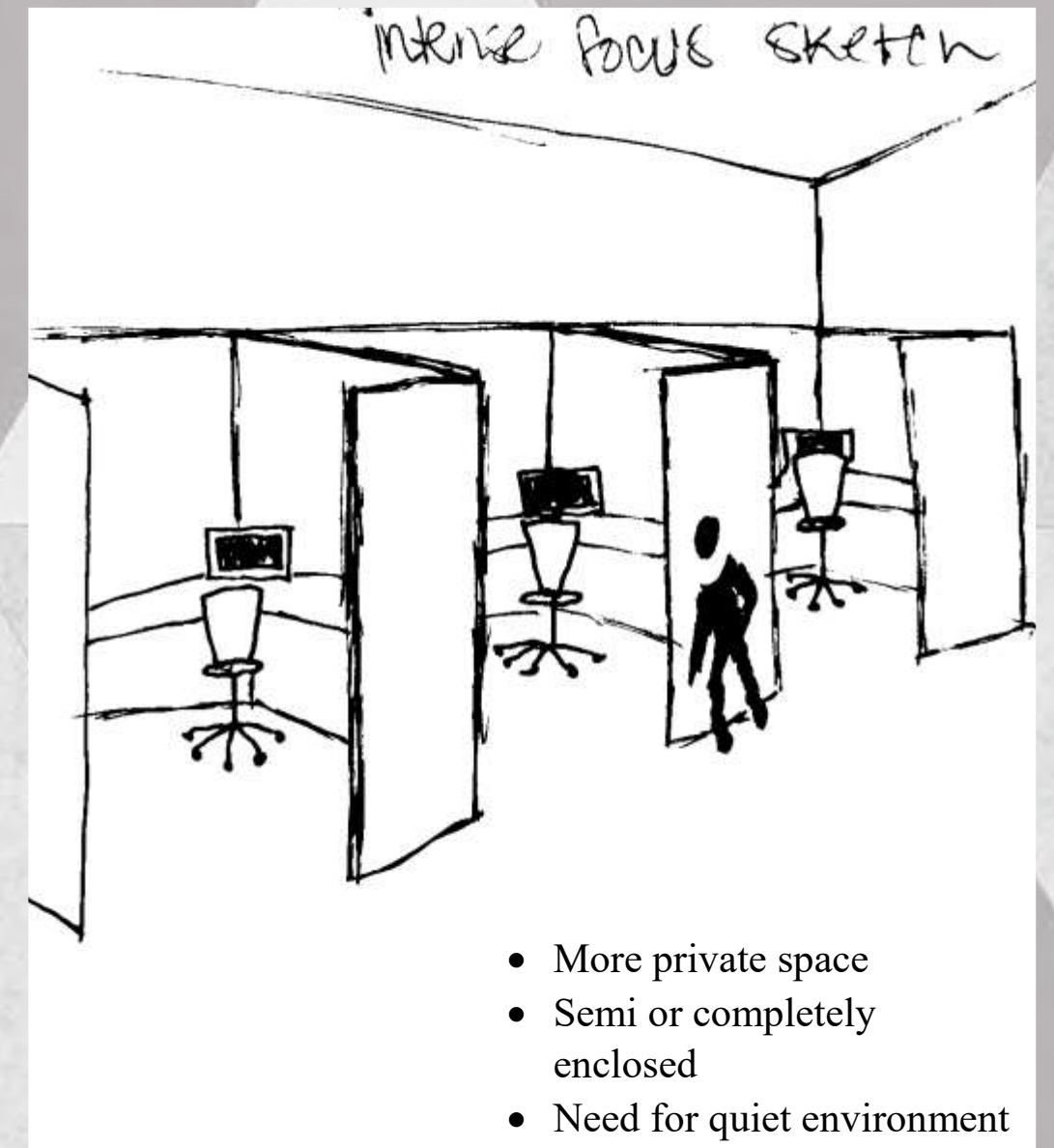
- Enclosed Spaces/ Offices
- Circulation Pathways
- Workspaces

Plan Circulation Sketches cont.



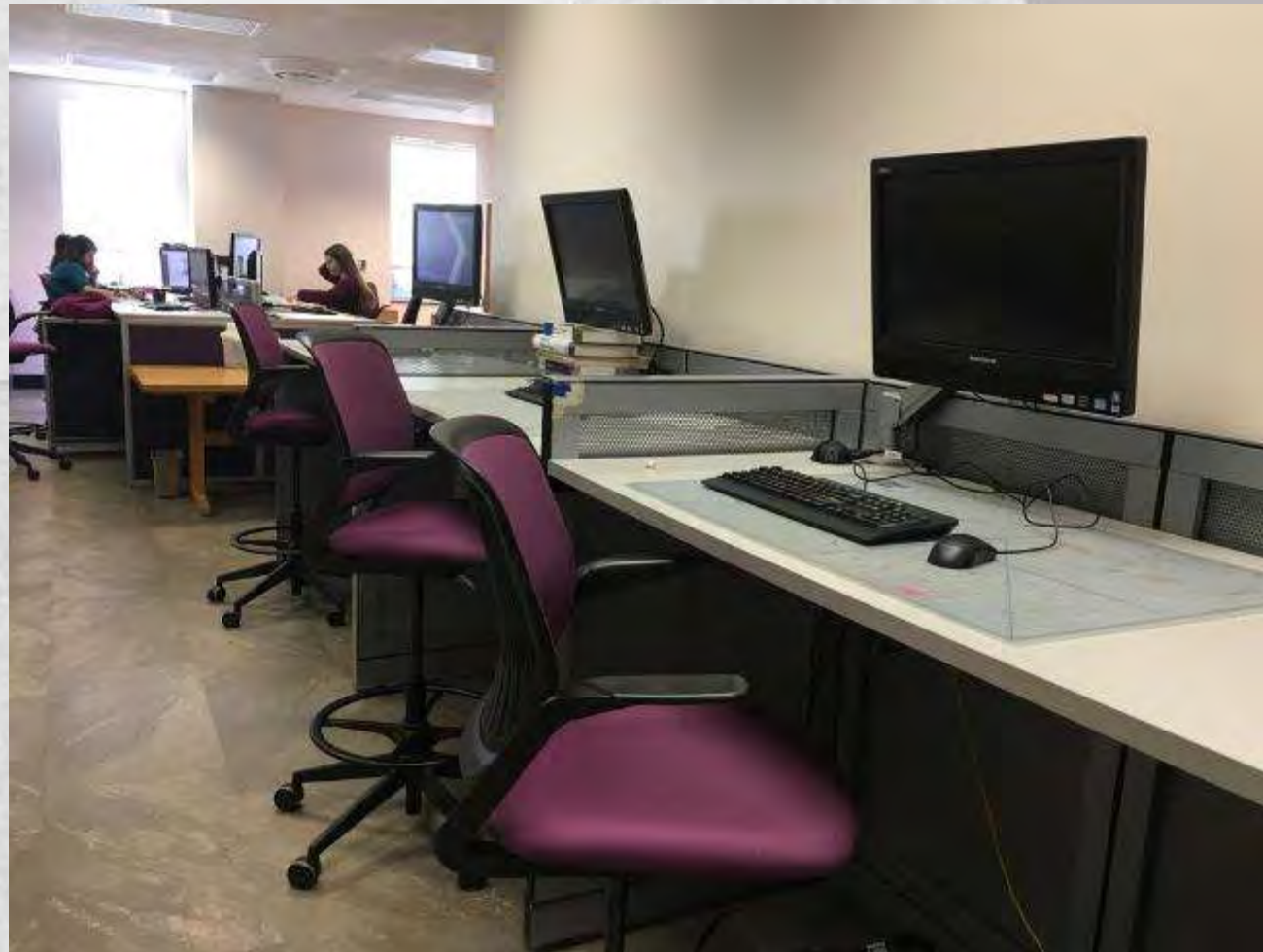
- Enclosed Spaces/ Offices
- Circulation Pathways
- Workspaces

Spatial Concept: Intense Focus work



Spatial Concept: Diffuse Focus work

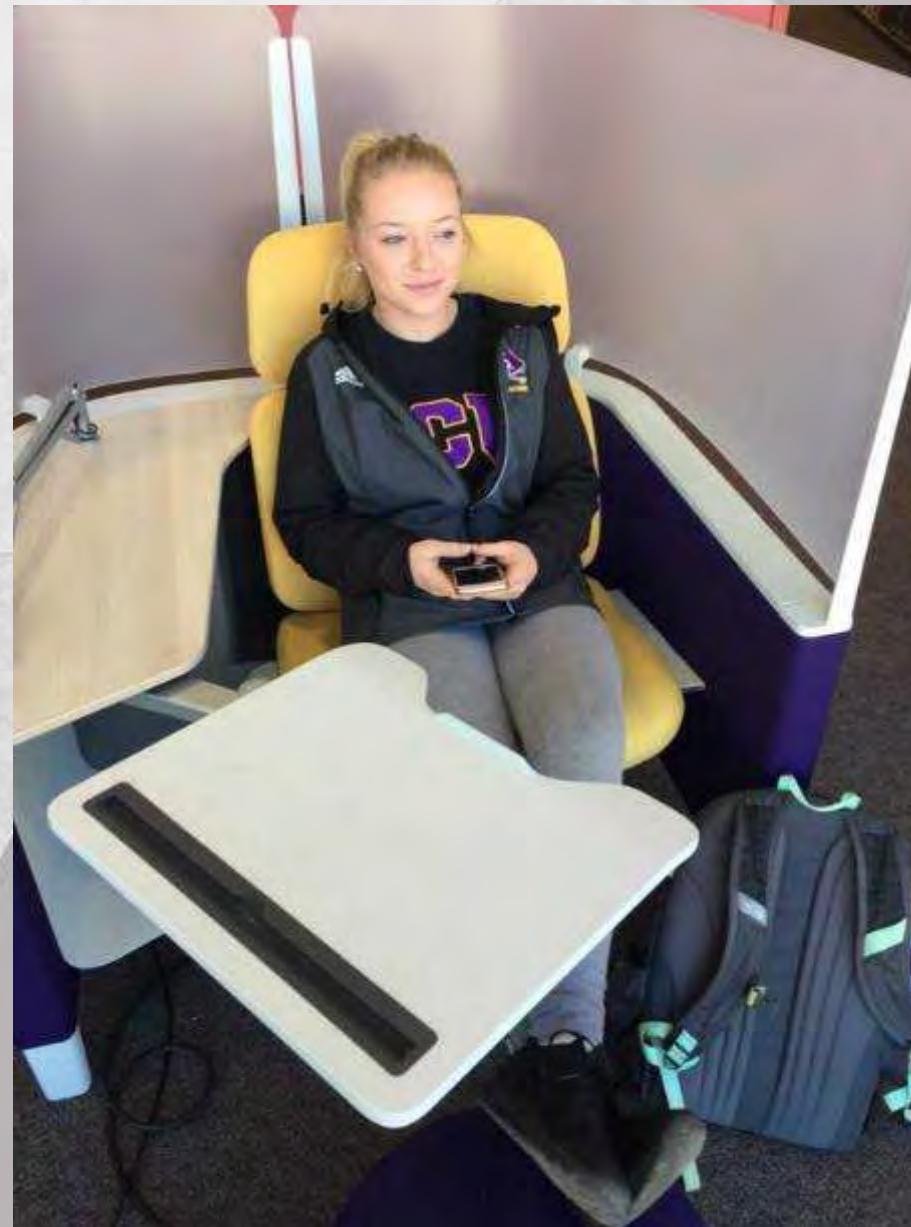
- Open workspace environment
- More shared/ social space





Spatial Concept: Daydreaming

- Private individual area/
lounge
- Partially enclosed “nook”,
not a private office
- Cozy



HHP

morPHH

Spatial Concept: Group Planning/ Meeting

- Enclosed group space
- Serious collaborating, not simple meetings



Spatial Concept: Shopping



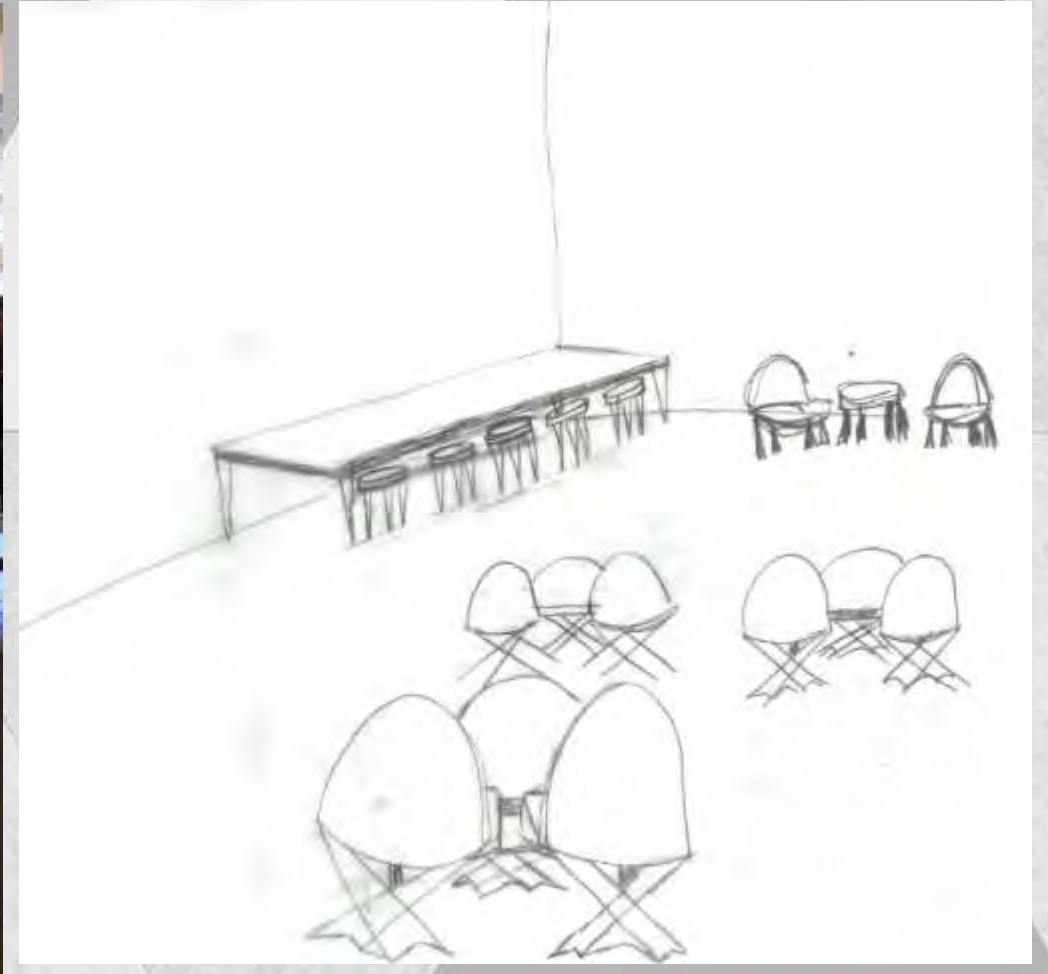
- Private & public area
- Semi or completely enclosed
- Resources readily available





Spatial Concept: Socializing

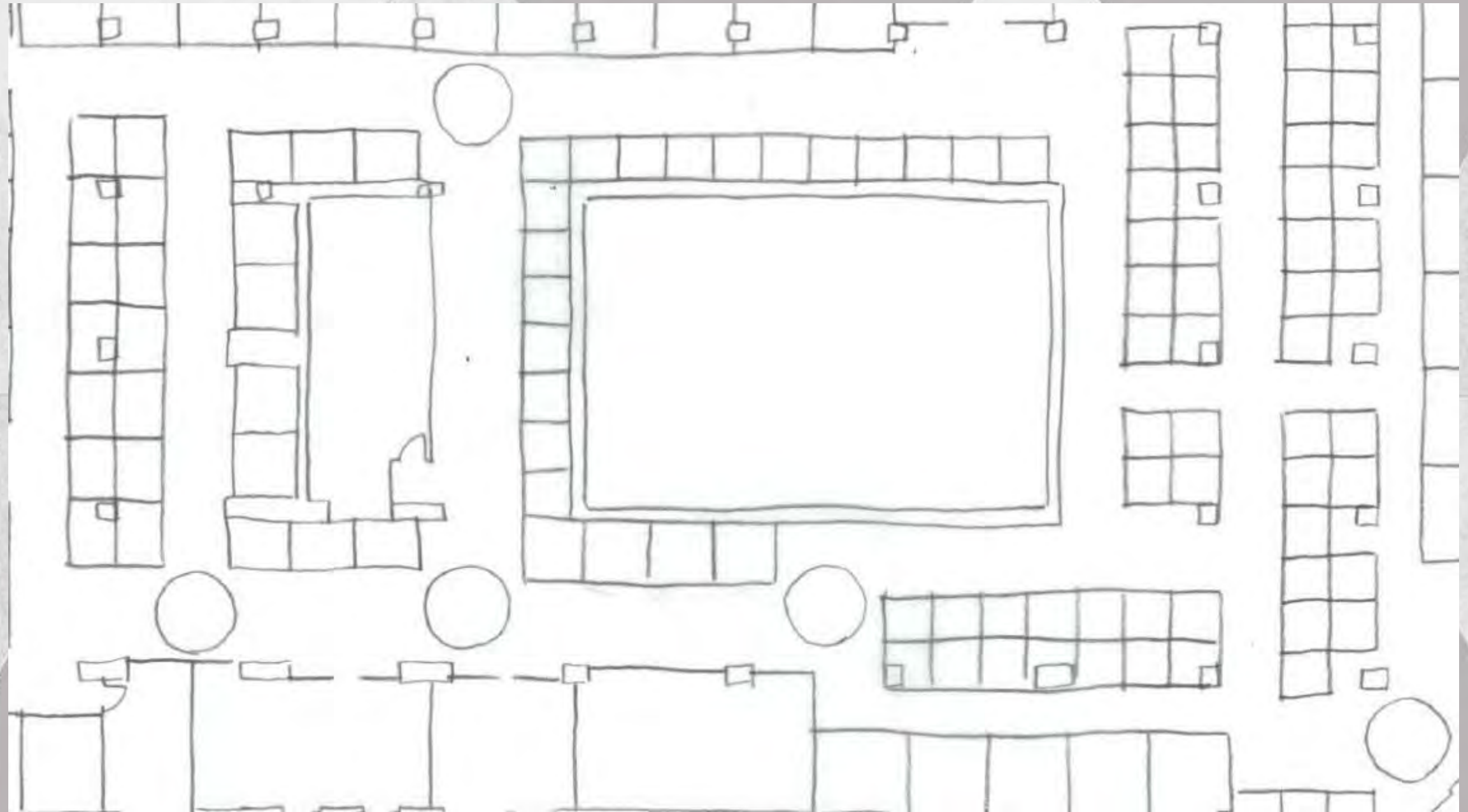
- Open lounge space
- Variety of seating & small collaboration areas



HP

morPHH

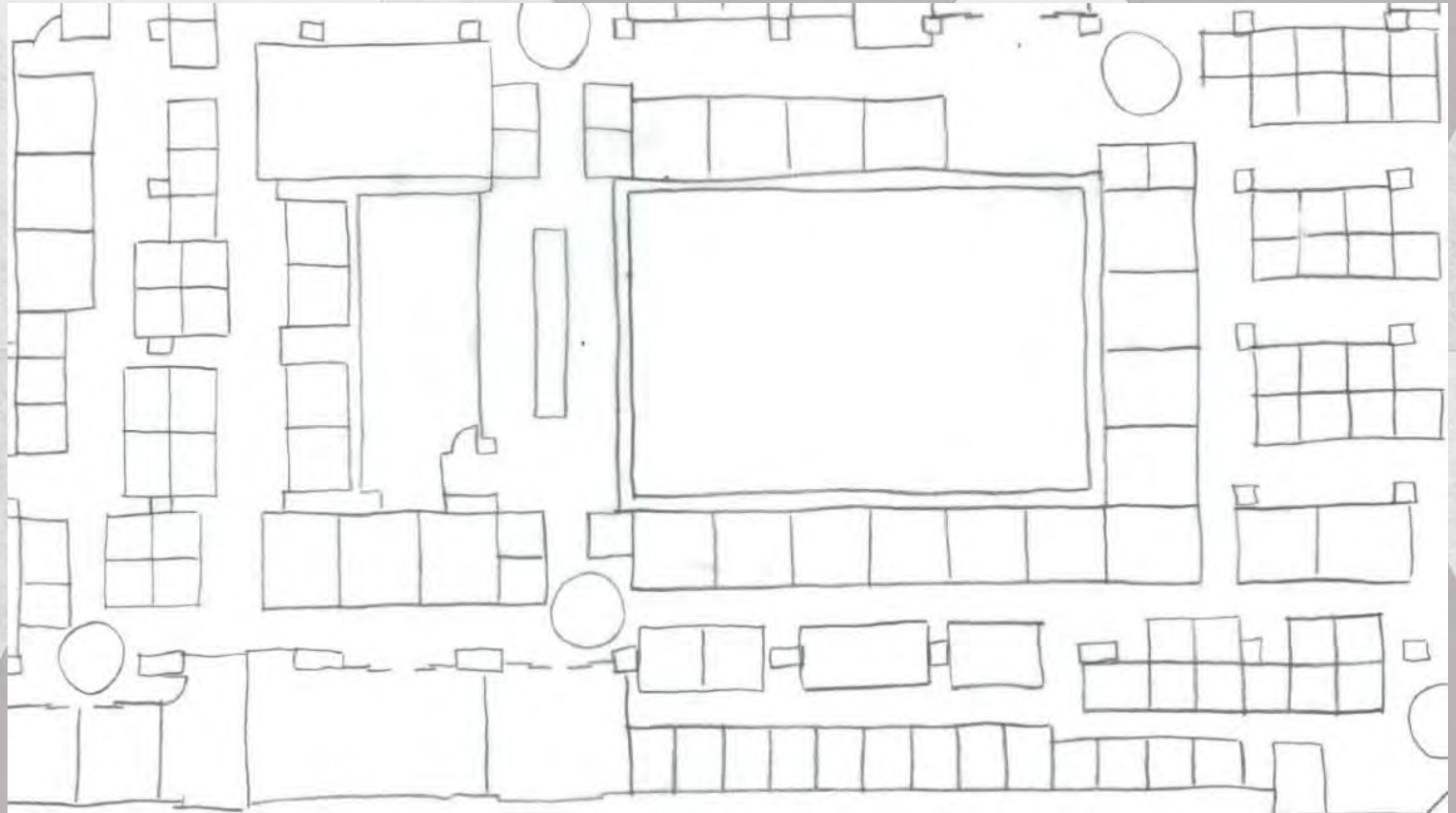
Space Plan Sketches: Perimeter Offices



HP

morPHH

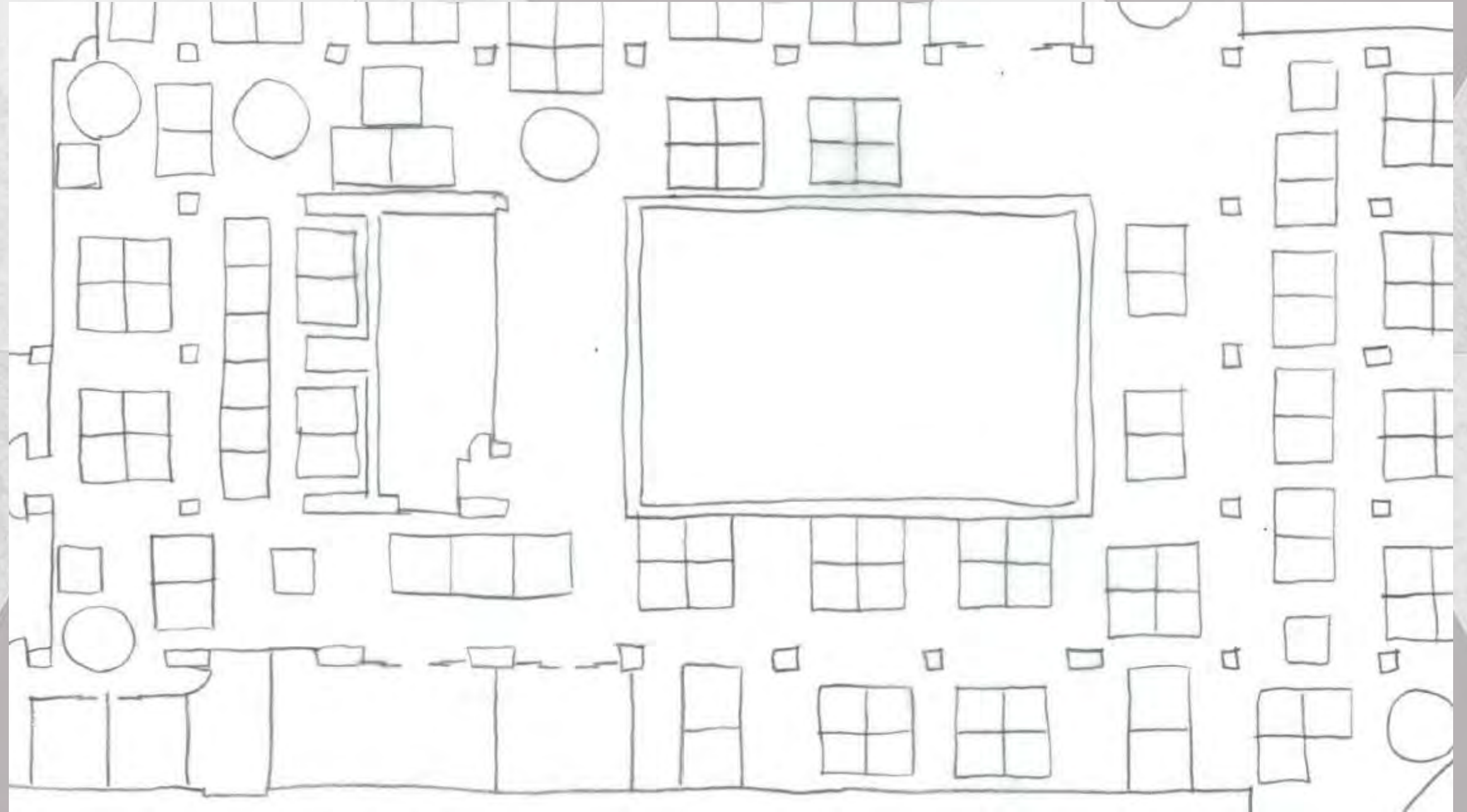
Space Plan Sketches: Interior Offices



HP

morPHH

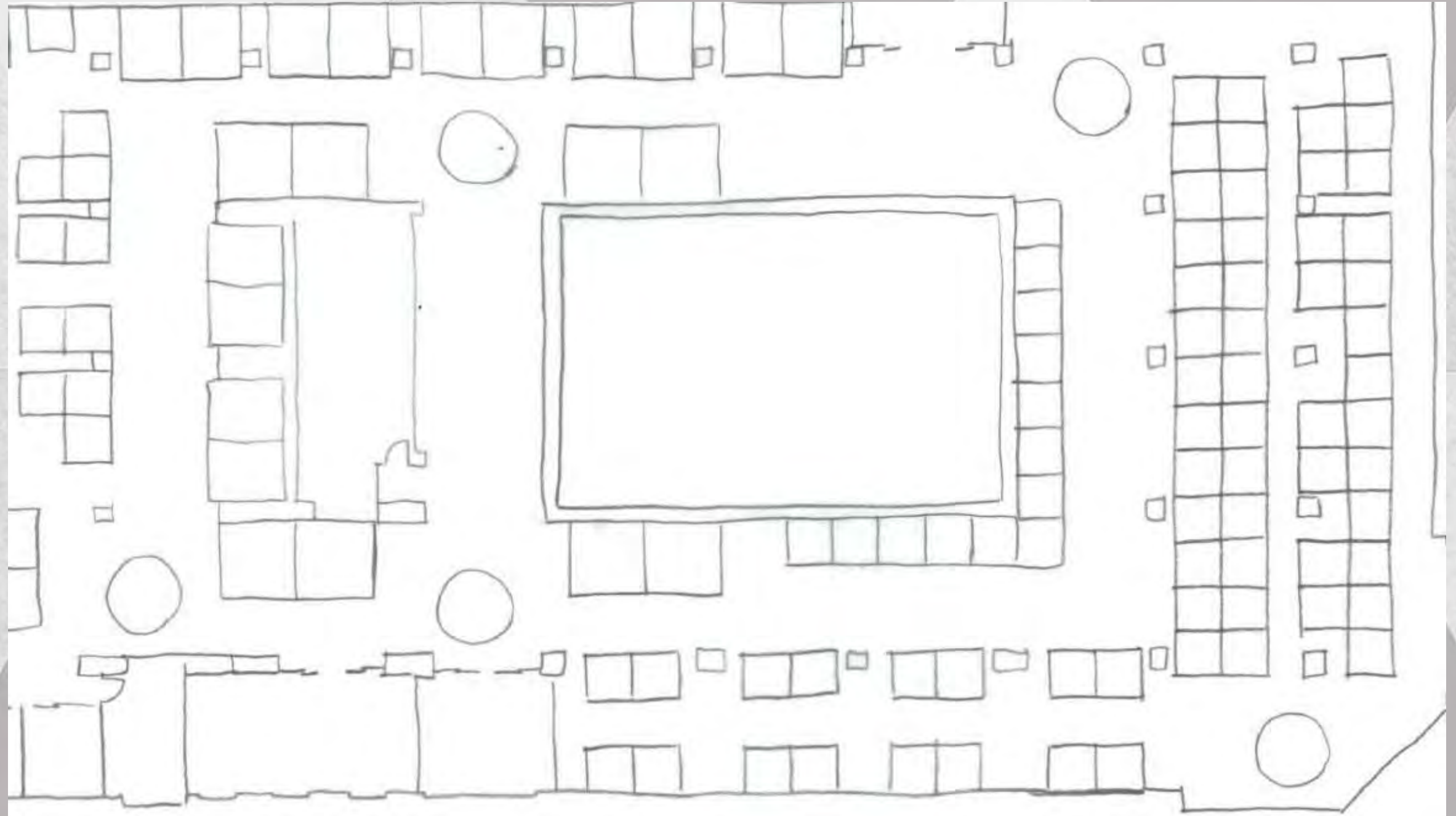
Space Plan Sketches: Scattered



HP

morPHH

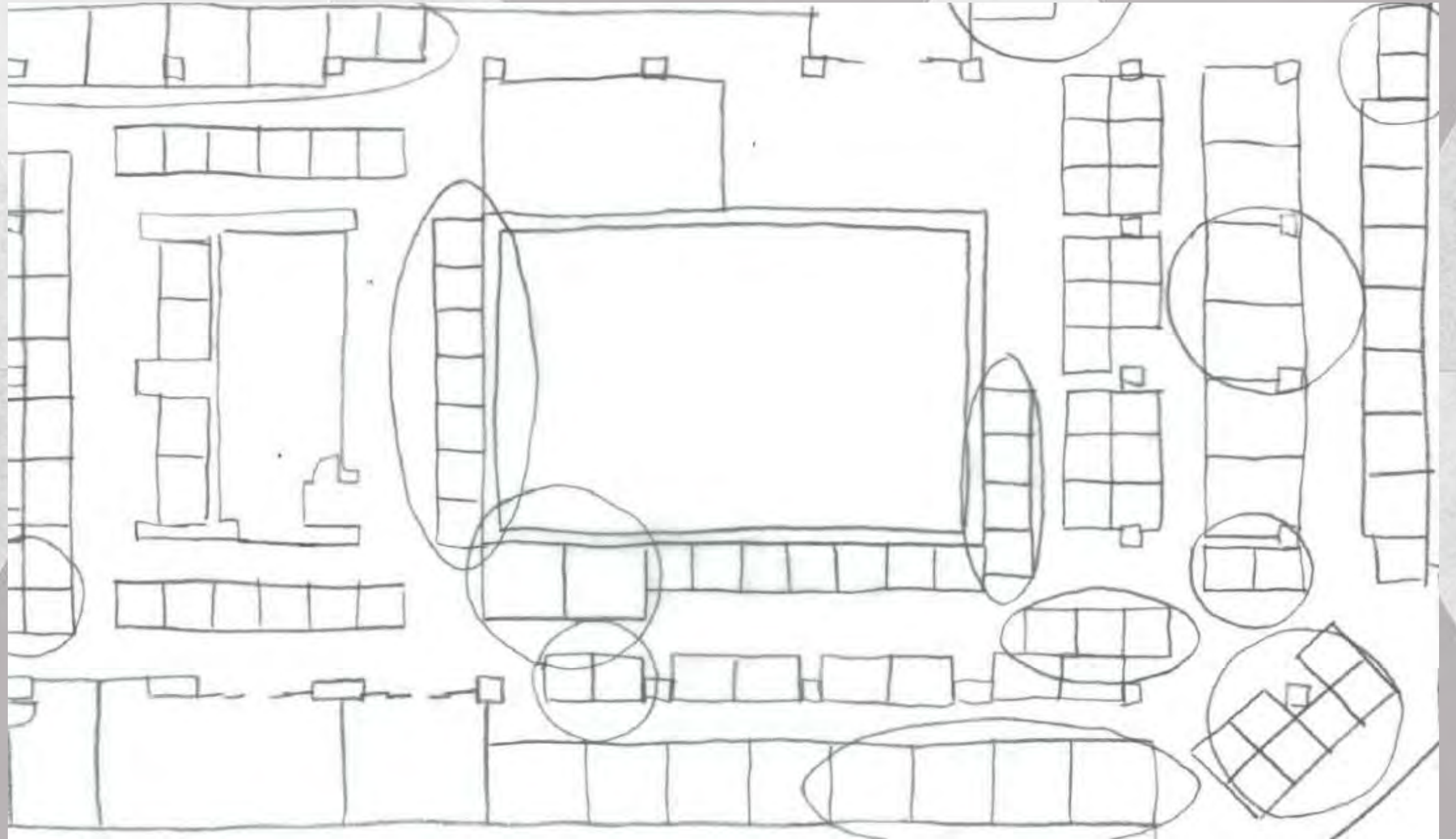
Space Plan Sketches: Scattered



HP

morPHH

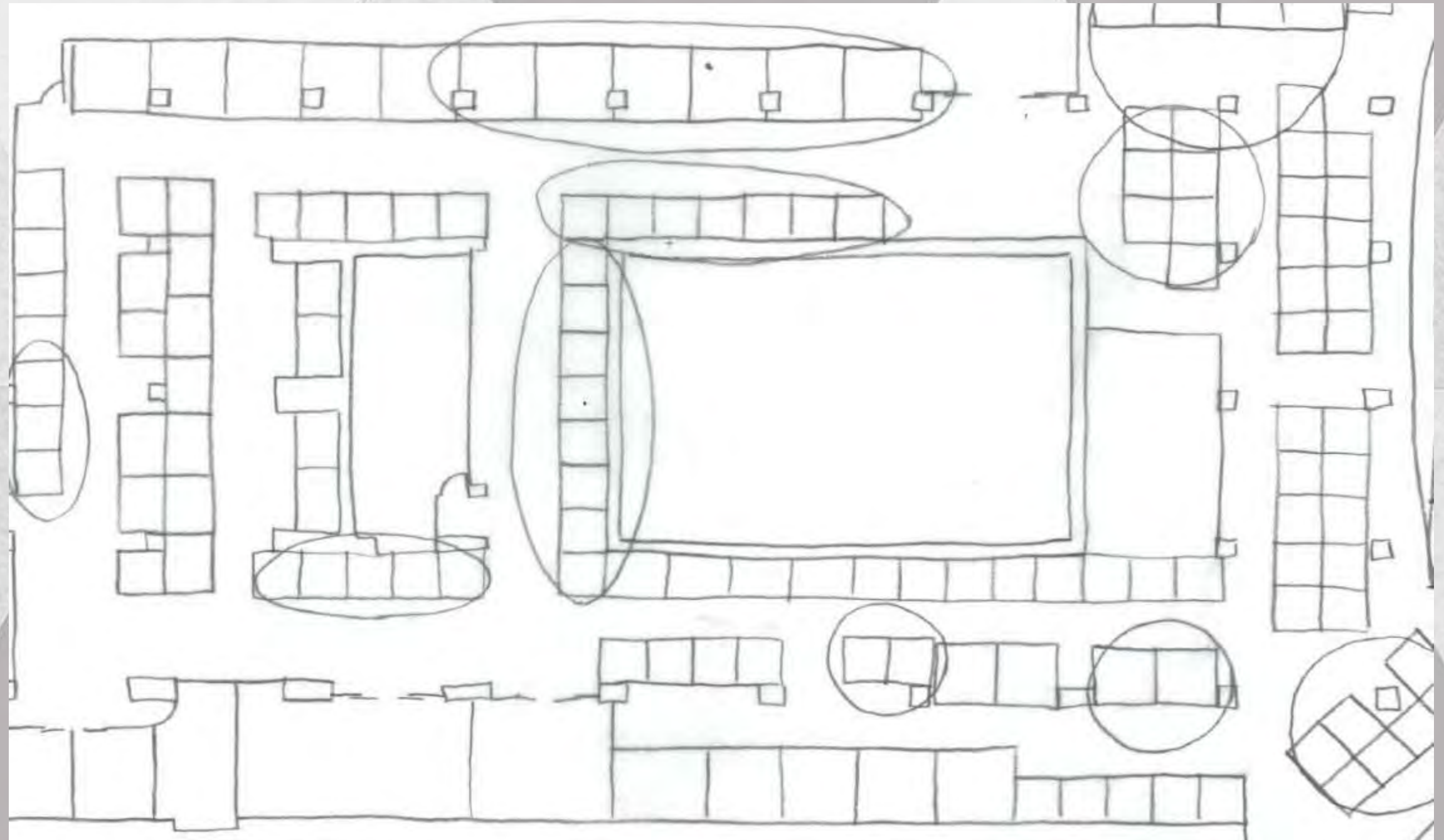
Space Plan Sketches: Knoll Comparison



HP

morPHH

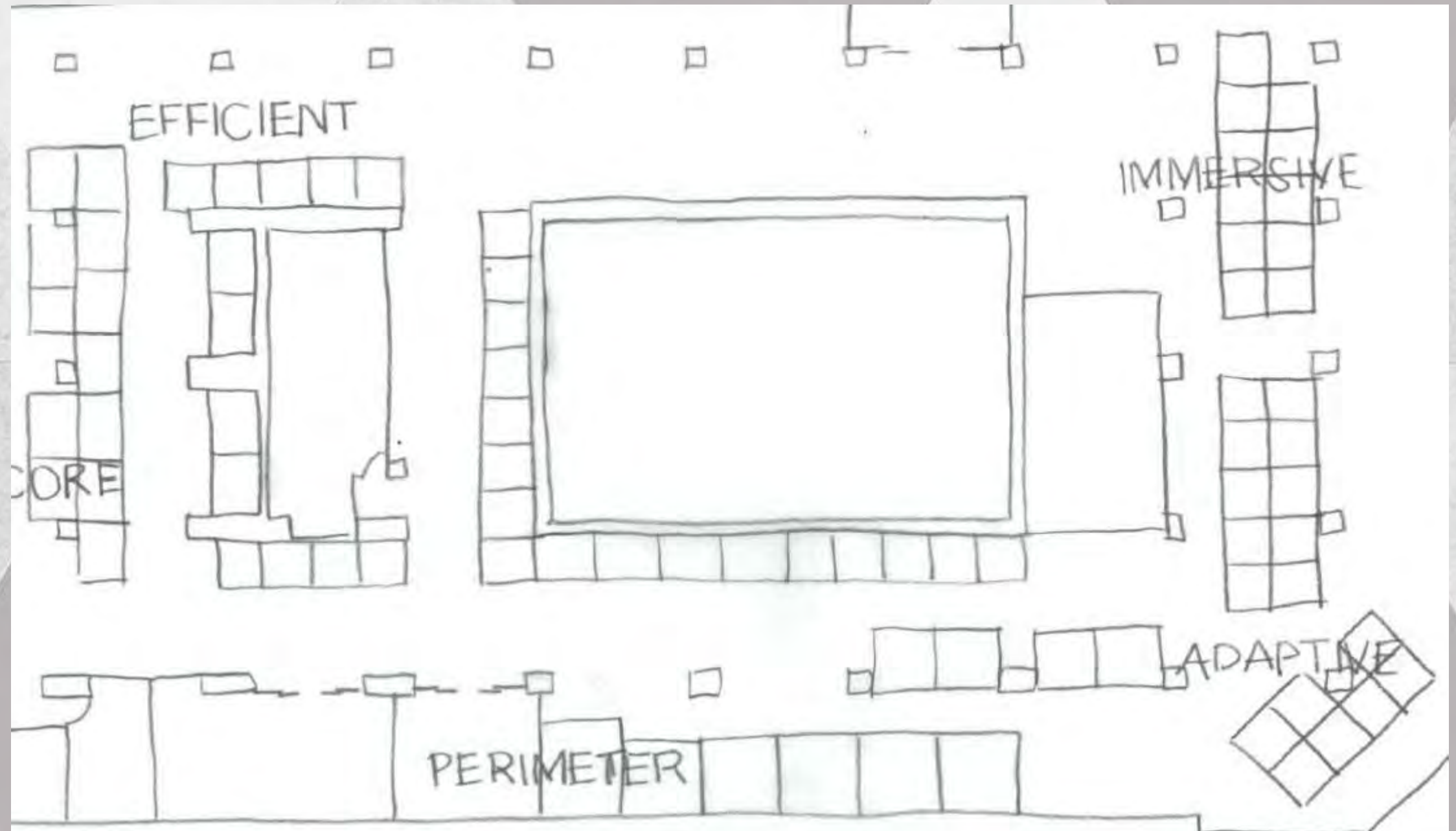
Space Plan Sketches: Knoll Comparison



HP

morPHH

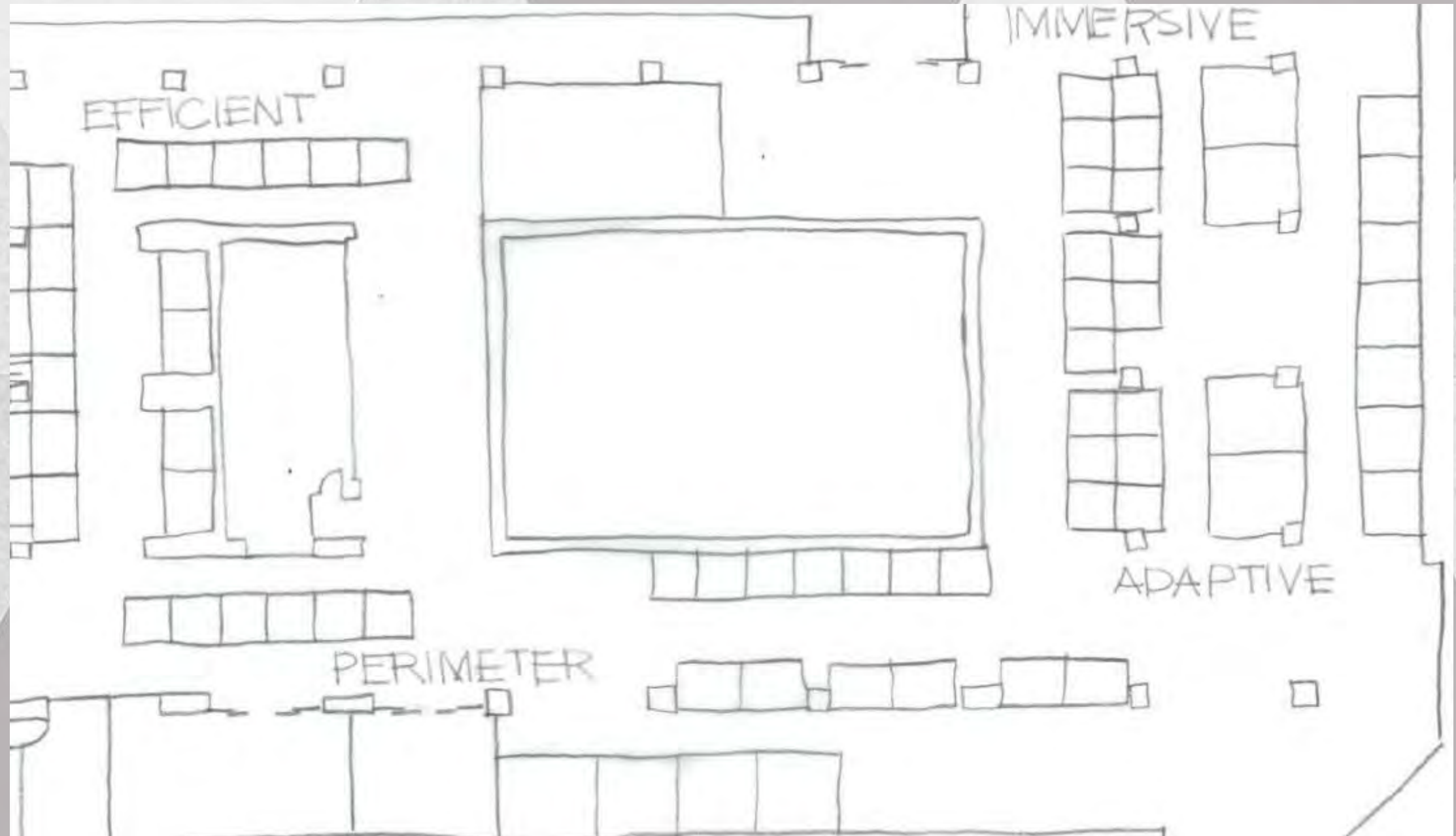
Space Plan Sketches: Knoll Workplace Planning



HP

morPHH

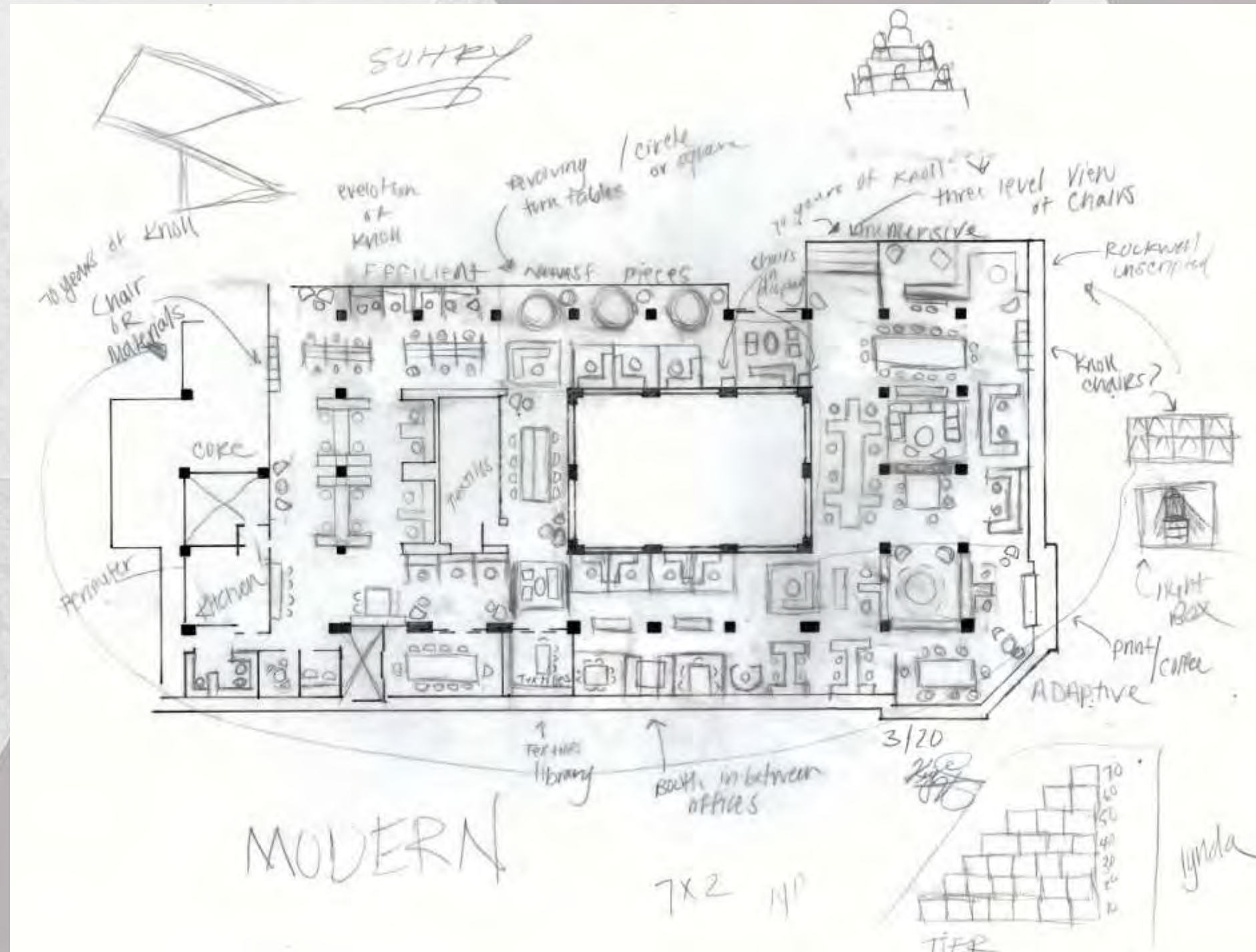
Space Plan Sketches: Knoll Workplace Planning



HP

morPHH

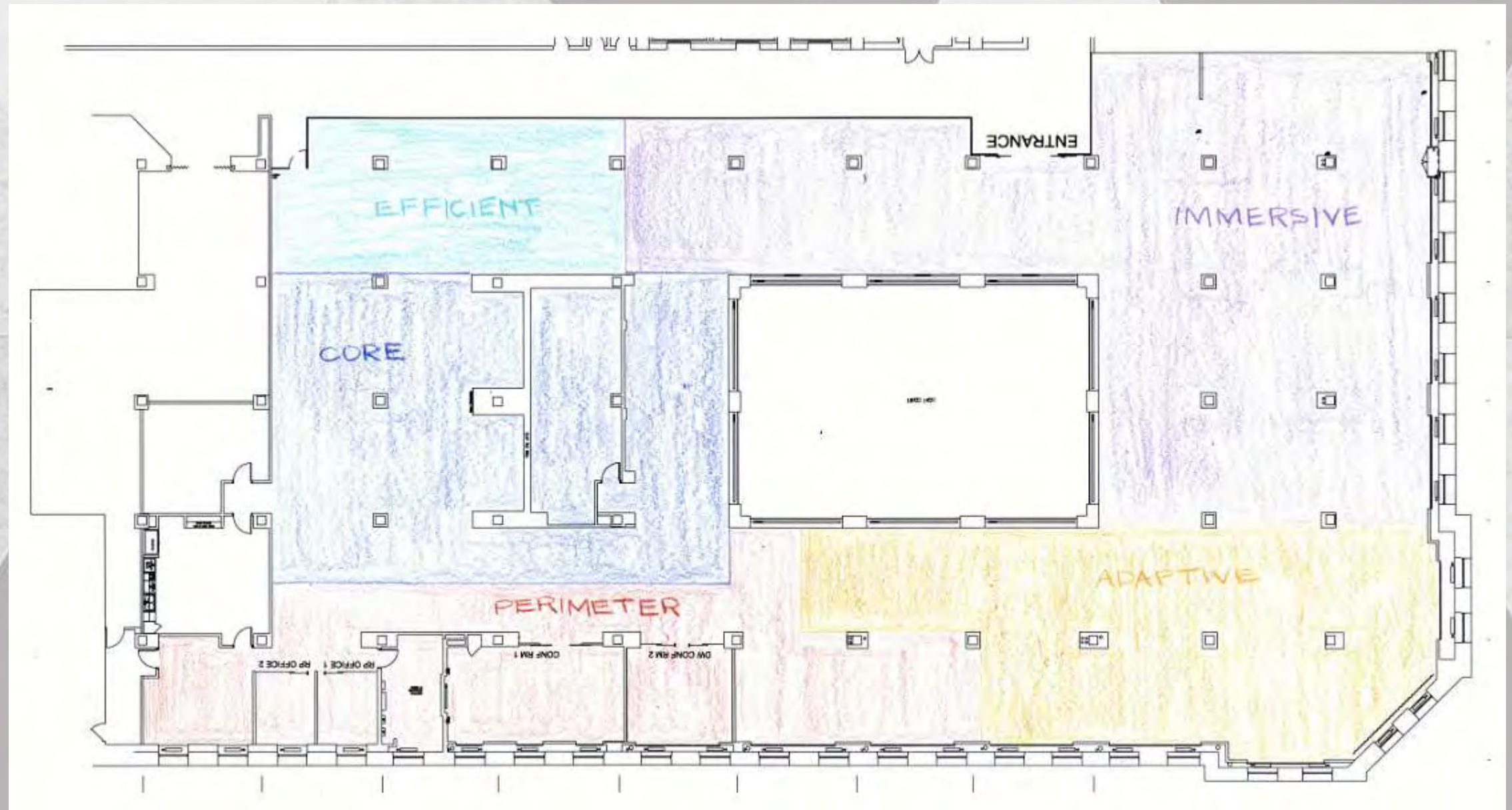
Space Plan Sketches: Furniture Plan



HP

morPHH

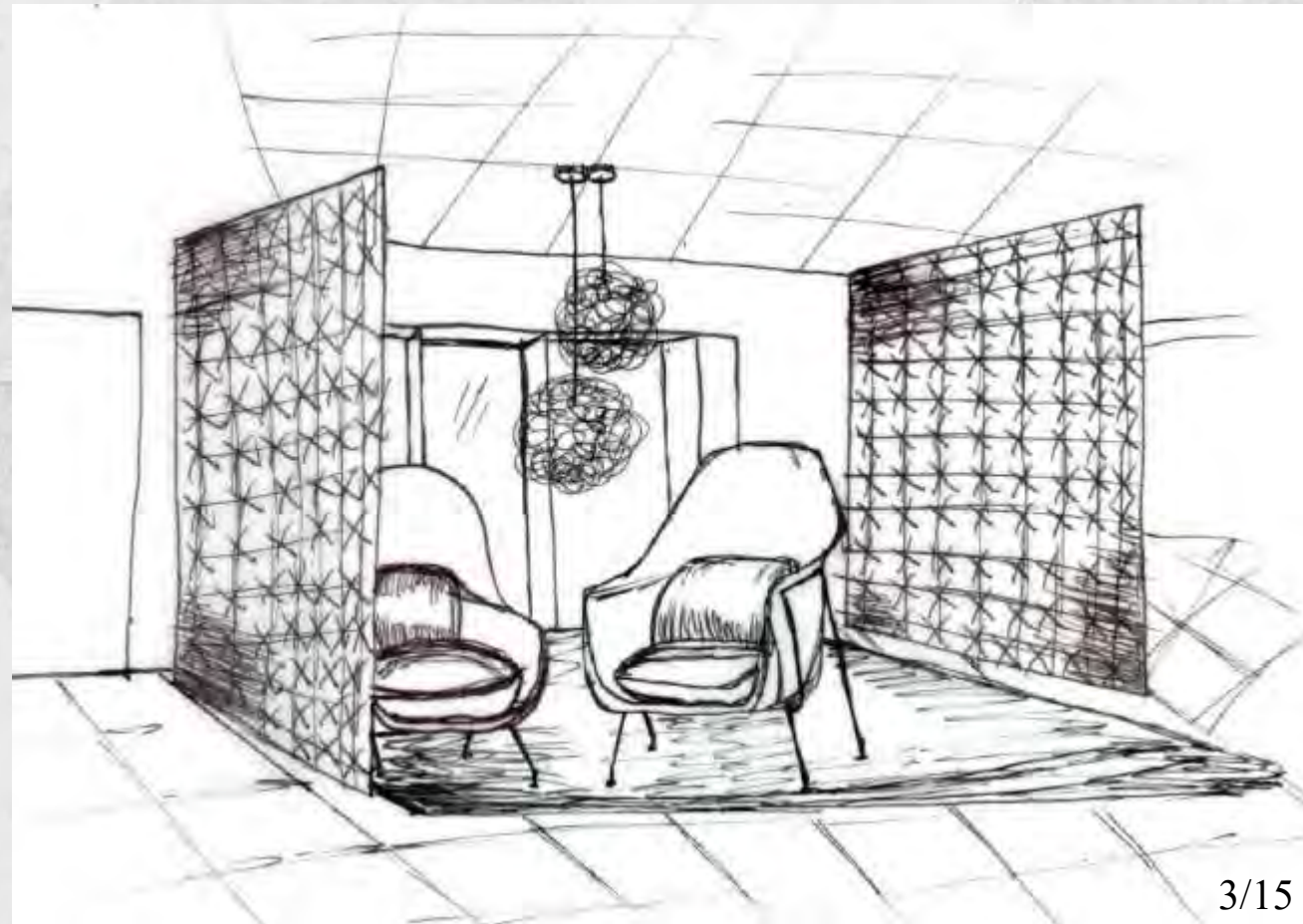
Planning Approaches



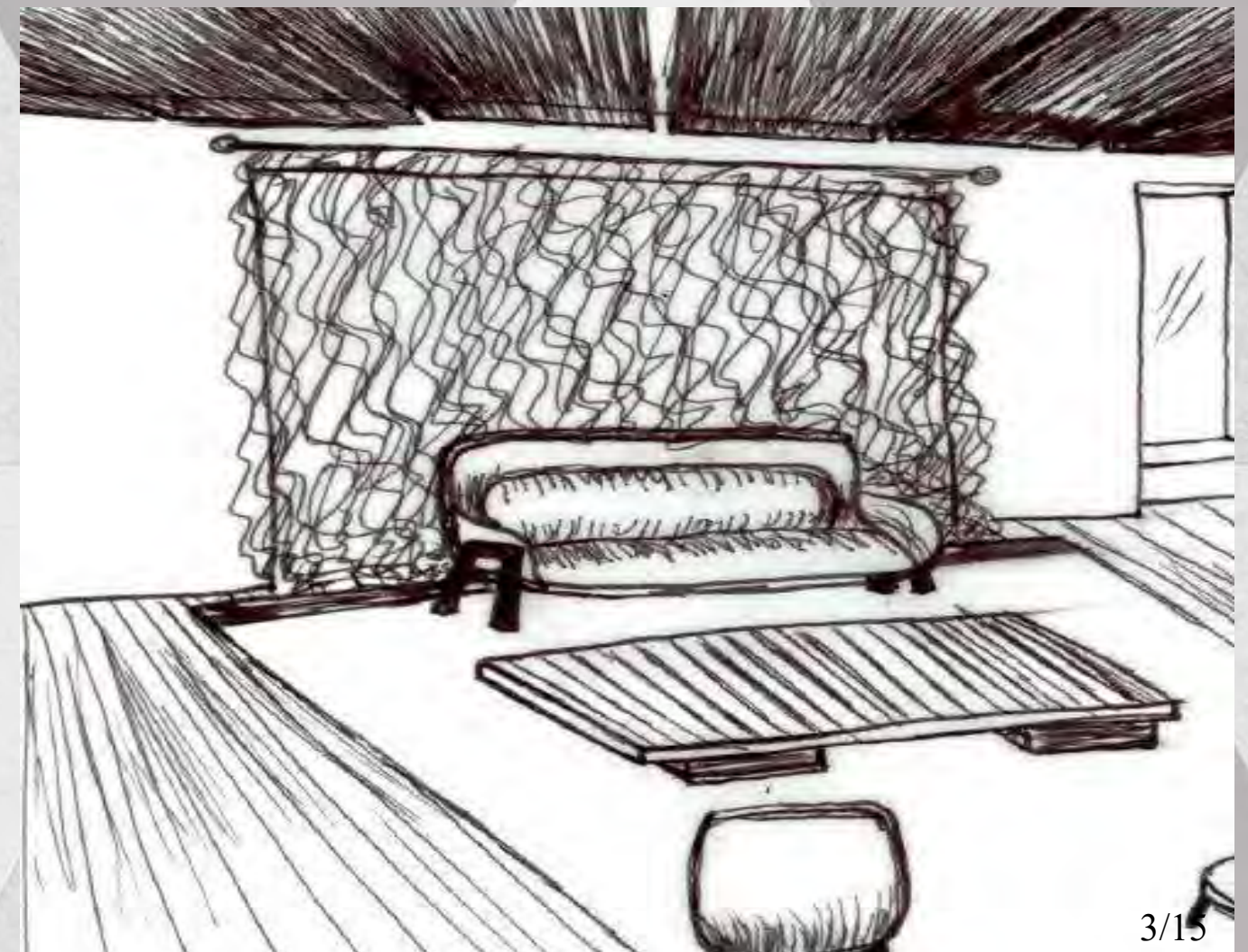
HP

morPHH

Design Development: Lounge



- Display iconic Knoll pieces
- Homey feel
- Filzfelt to break up space
- Intimate pendant lighting
- Ceiling paneling
- Laminate flooring



- Filzfelt drop down paneling
- Laminate flooring
- Intimate lighting/ colors
- Display iconic Knoll pieces
- Homey feel
- Curtain in front of light box

HP

morPHH

Design Development: Lounge



- Display iconic Knoll pieces
- Homey feel
- Filzfelt to break up space
- Laminate wood flooring
- Stainless steel cage
- Dim/ intimate lighting



- Filzfelt paneling to break up space
- Classic furniture pieces
- Use of Bauhaus colors to begin timeline
- Homey feel (curtains and rugs)
- Ceiling beams
- Capture Knoll essence

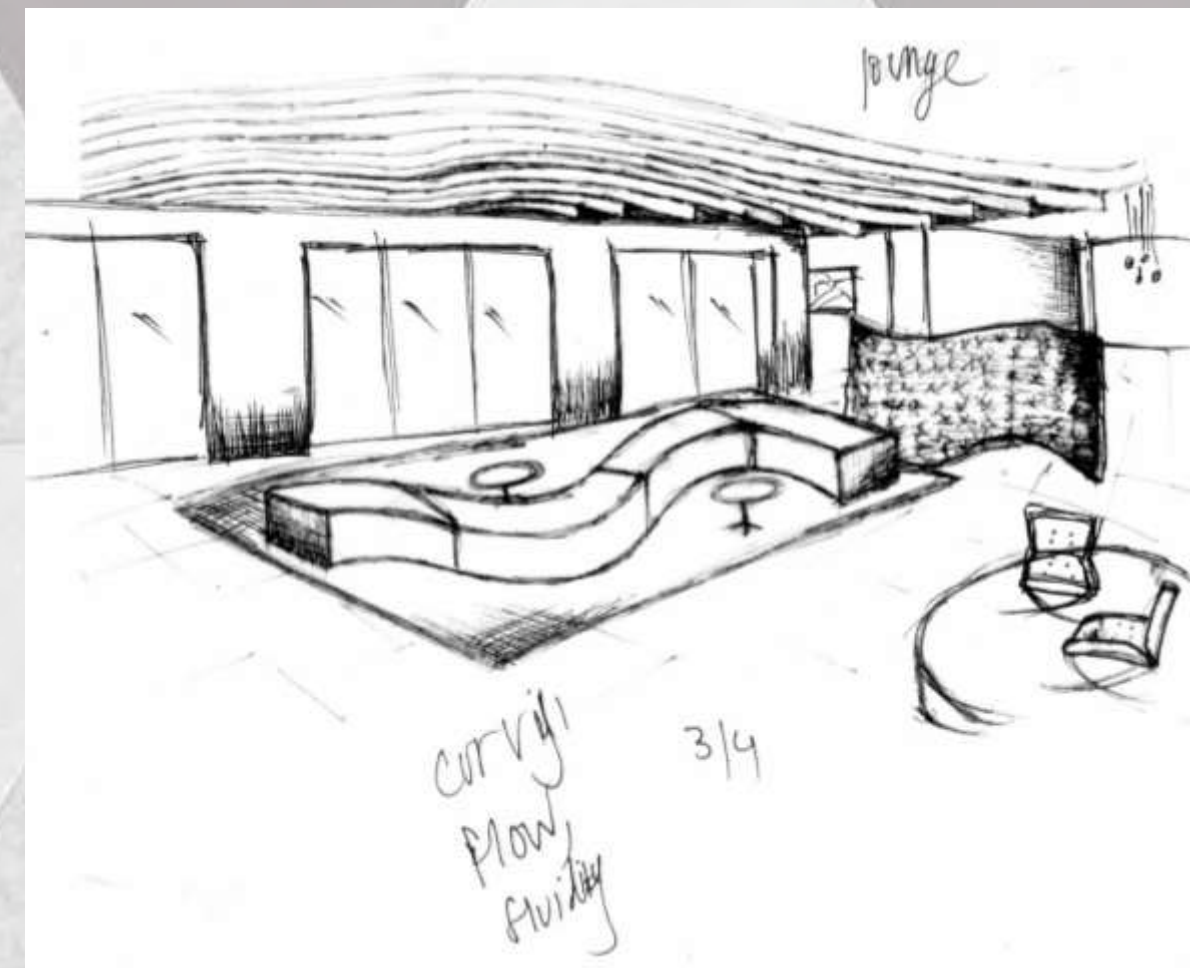
HP

morPHH

Design Development: Lounge



- Futuristic
- Display tables for new or iconic pieces
- Panel system on ceiling
- Use of angles to promote modernity

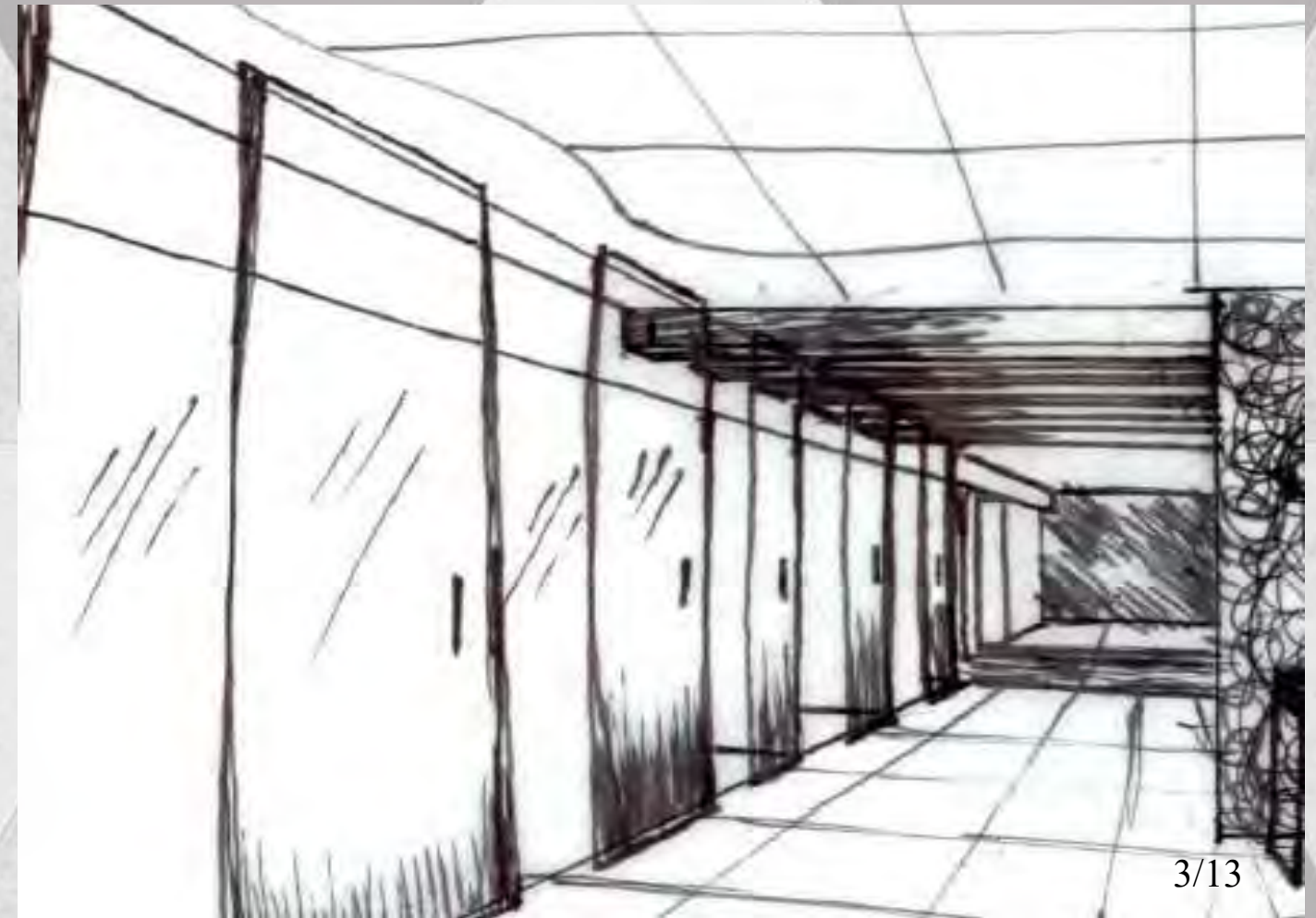
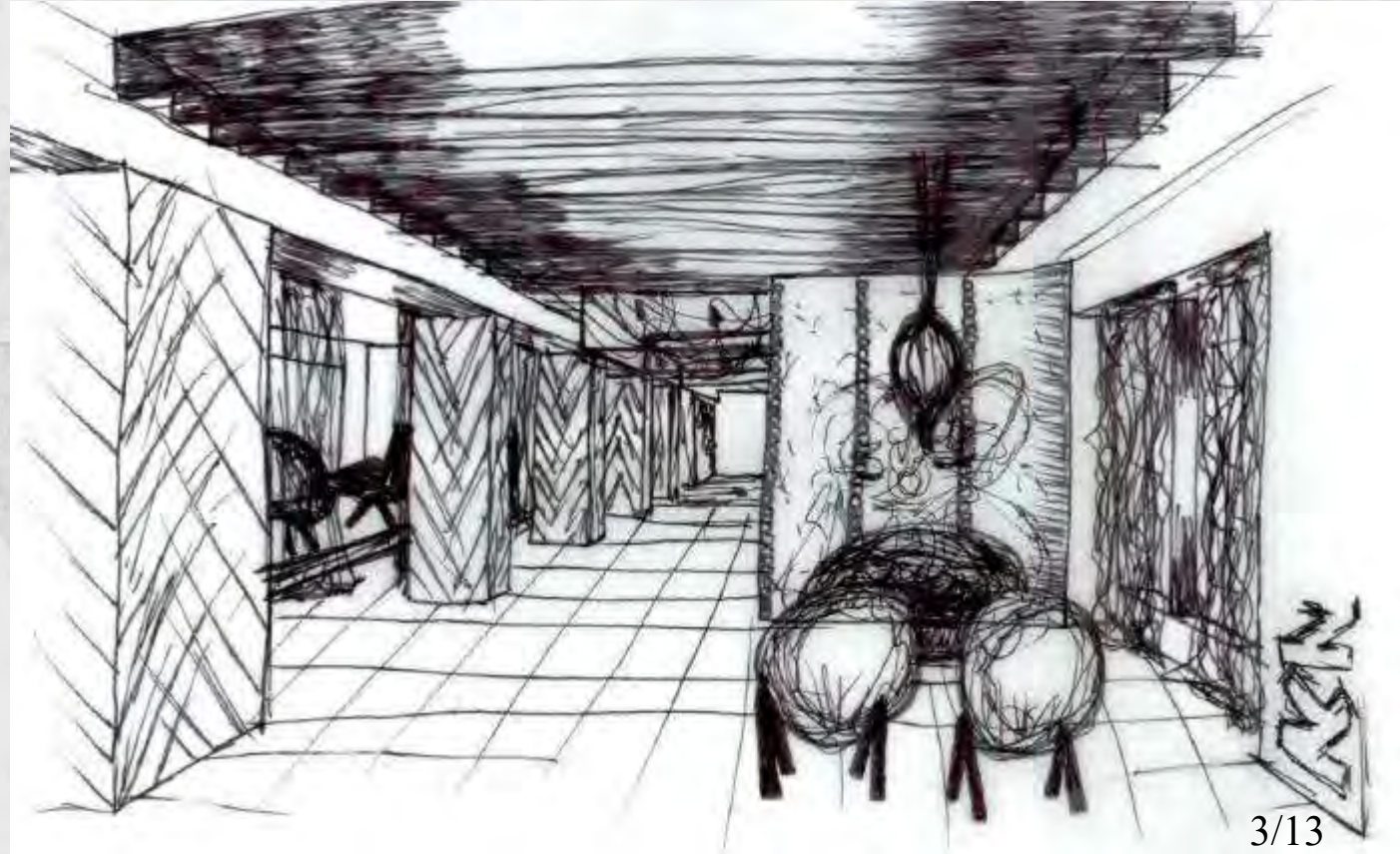


- Keep fluidity in mind
- Use curves to create carry flow
- Display tables for new or iconic pieces

HP

morPHH

Design Development: Main Corridor



- Leather wrapped columns
- Textiles for curtains
- Classic lounge pieces throughout

- Filzfelt panels on ceiling & as dividers
- Easy pathfinding
- Textiles in front of displays

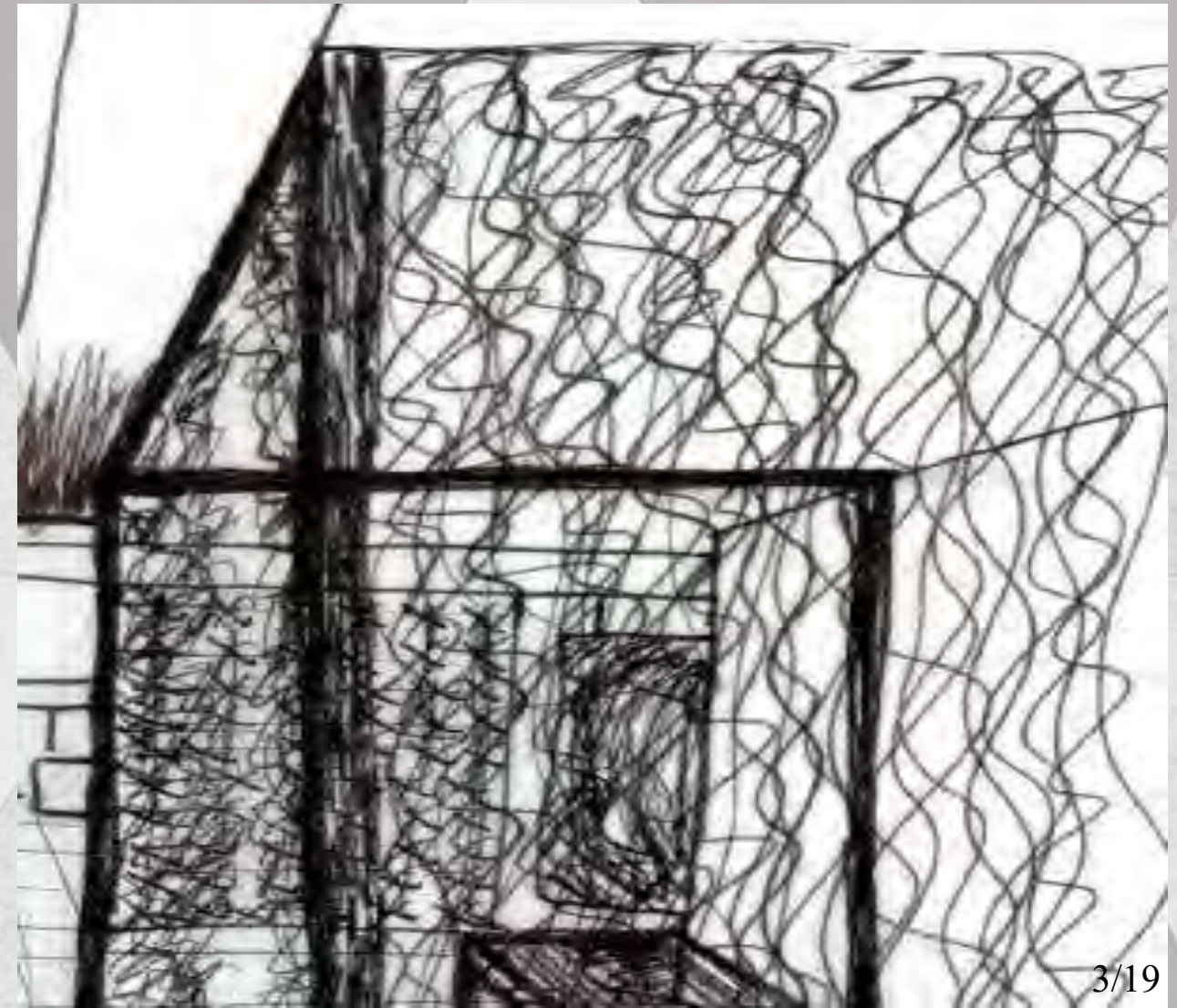
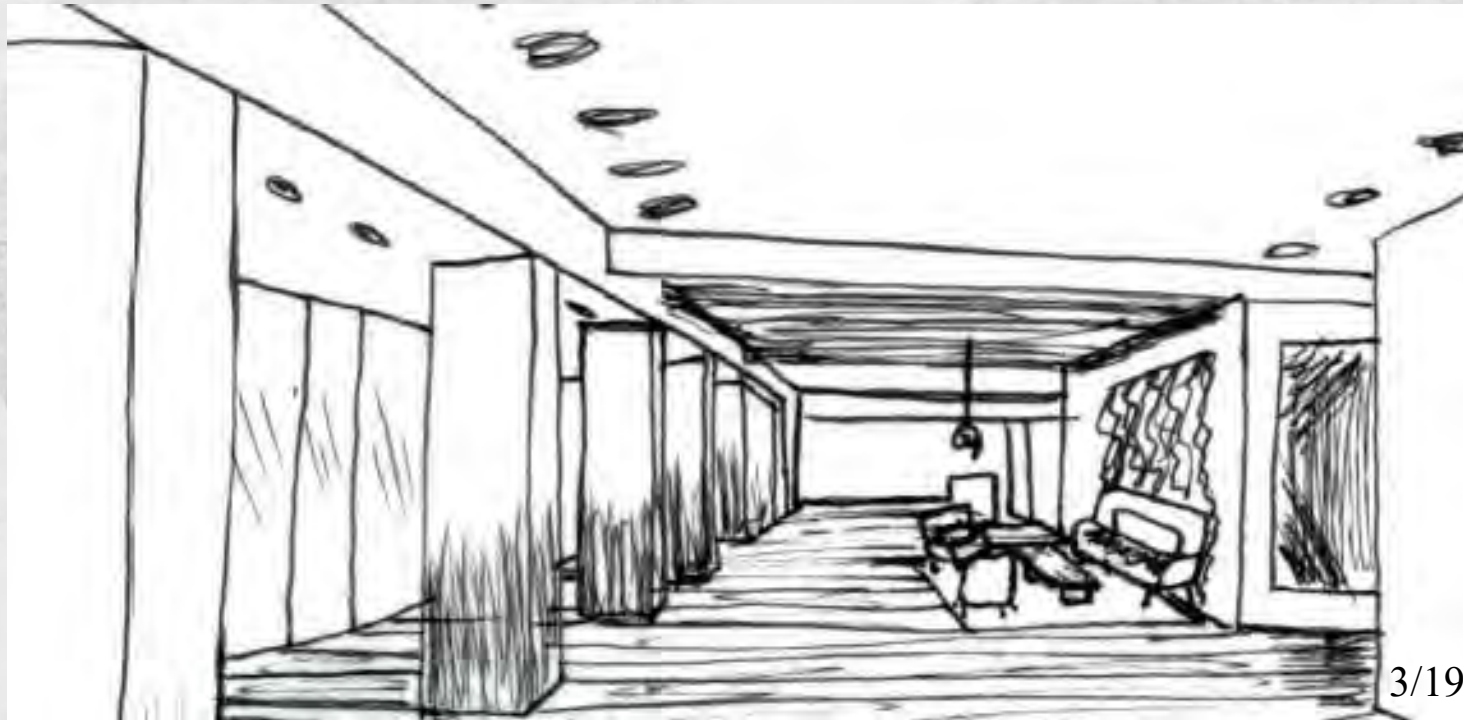
- Dropped acoustical tile panel
- Open workspaces
- Glass offices for open feeling

- Open view of storefront
- Laminate tiling
- Filzfelt to break up space

HP

morPHH

Design Development: Main Corridor



- Display iconic Knoll pieces
- Curtain in front of lightbox
- Intimate lighting

- Leather wrapped beams
- Laminate wood flooring
- Open feel

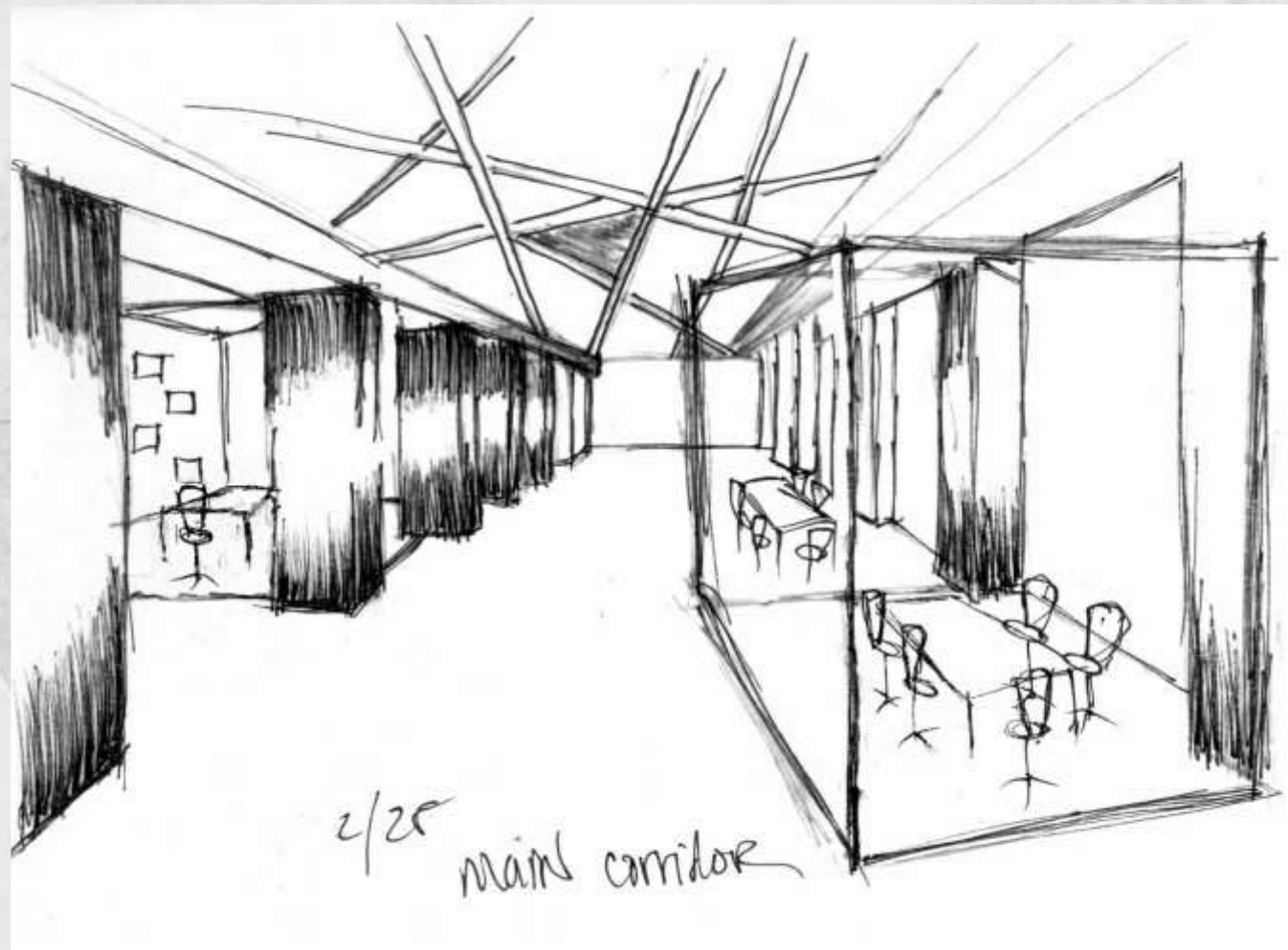
- Filzfelt drop down panels
- Open feel
- Caged Knoll display

- Floor paneling
- Warm colors
- Wrapped beams

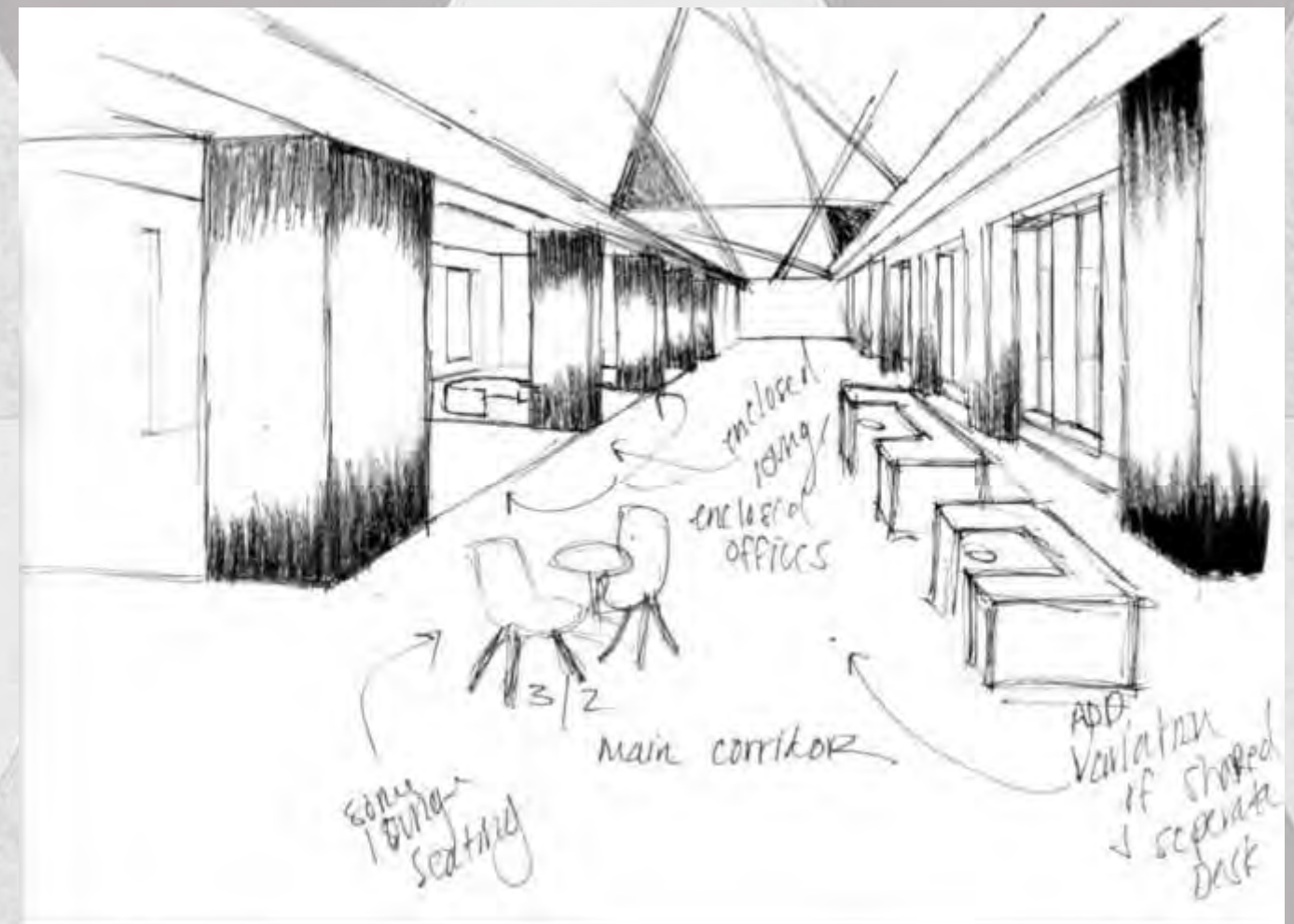
HP

morPHH

Design Development: Main Corridor



- Creative wall to create enclosed space
- Panel system on ceiling

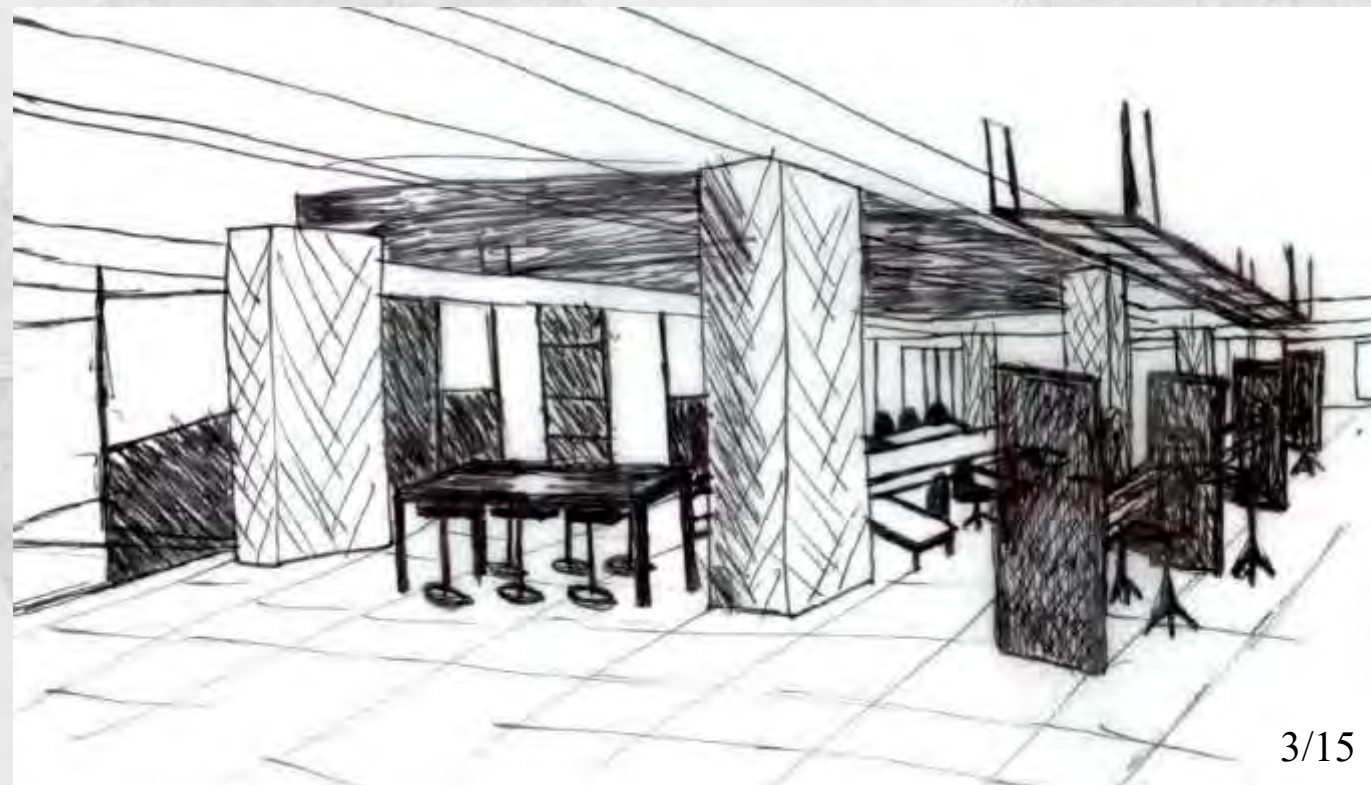


- Variation of shared and individual workspaces
- Scattered lounge seating
- Private lounge areas
- Glass enclosed offices

HP

morPHH

Design Development: Open Workspaces



- Variety of workspace styles
- Varying privacy levels
- Collaborative areas throughout

- Drop acoustical tile
- Drop Filzfelt
- Creative wall used in back

- Filzfelt ceiling panels
- Pendant task lighting
- Glass paned offices for open look

- Natural light through windows
- Places to hang materials
- Laminate tile flooring

HP

morPHH

Design Development: Open Workspaces



- Knoll logo on main wall
- Variety of workspace styles
- Filzfelt tile dropdown
- Generation chairs
- Natural lighting
- Wrapped beams



- Variety of workspace styles
- Filzfelt dropdown ceiling
- Bauhaus inspired detailing
- Variety of privacy levels
- Generation chairs
- Natural lighting

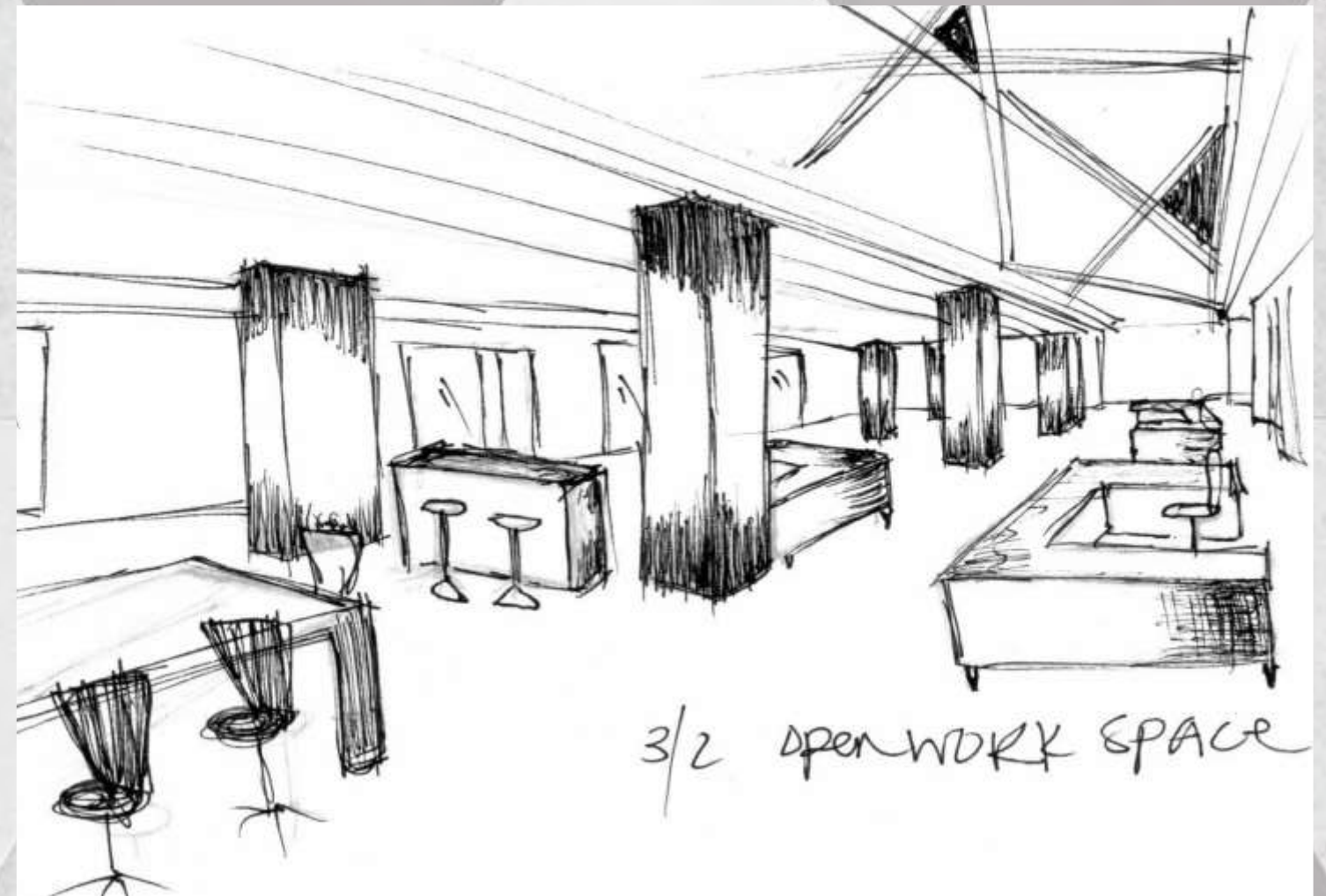
PHH

morPHH

Design Development: Open Workspaces



- Filzfelt on ceiling
- Variation of individual and group workspaces
- Print station
- Enclosed offices around perimeter

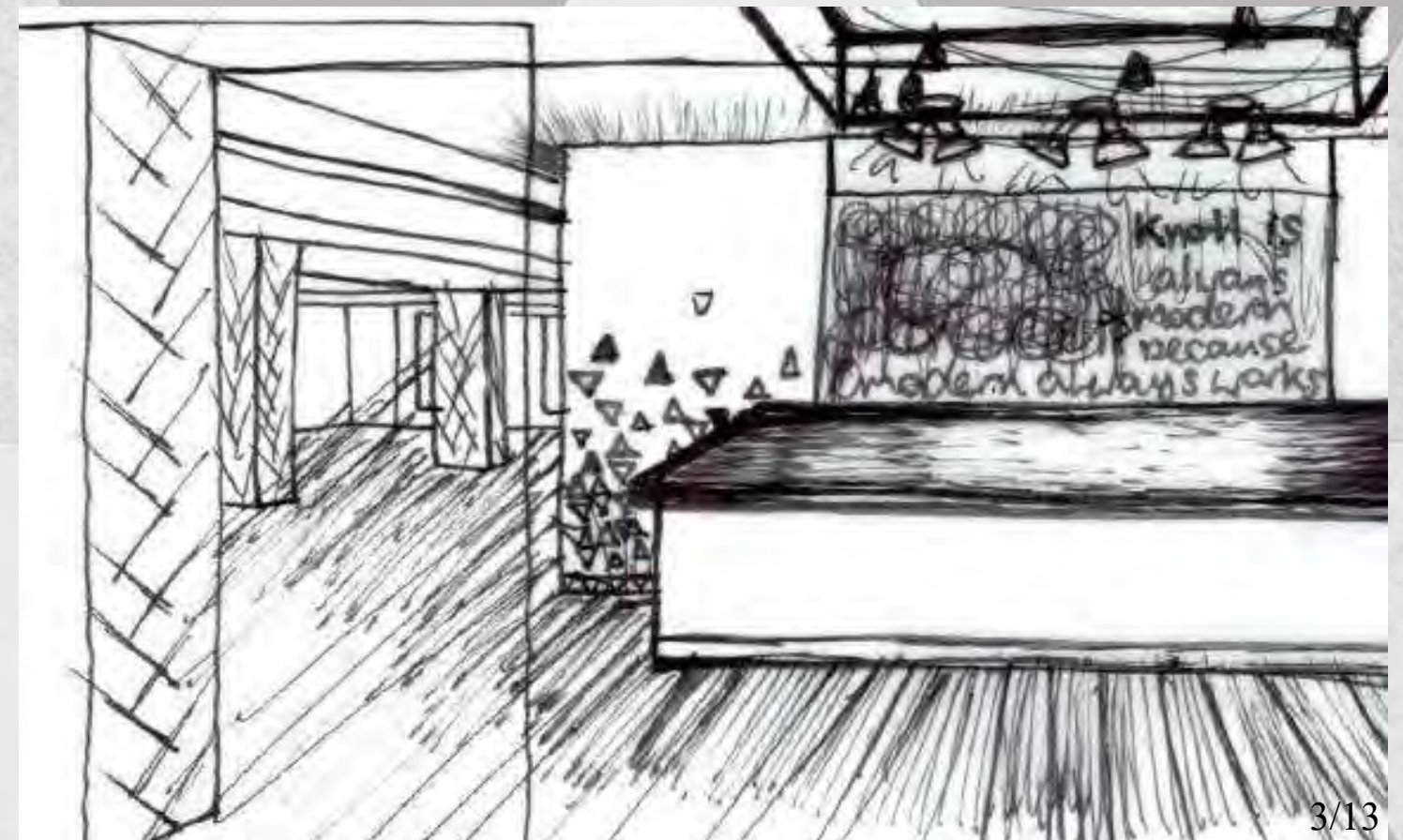
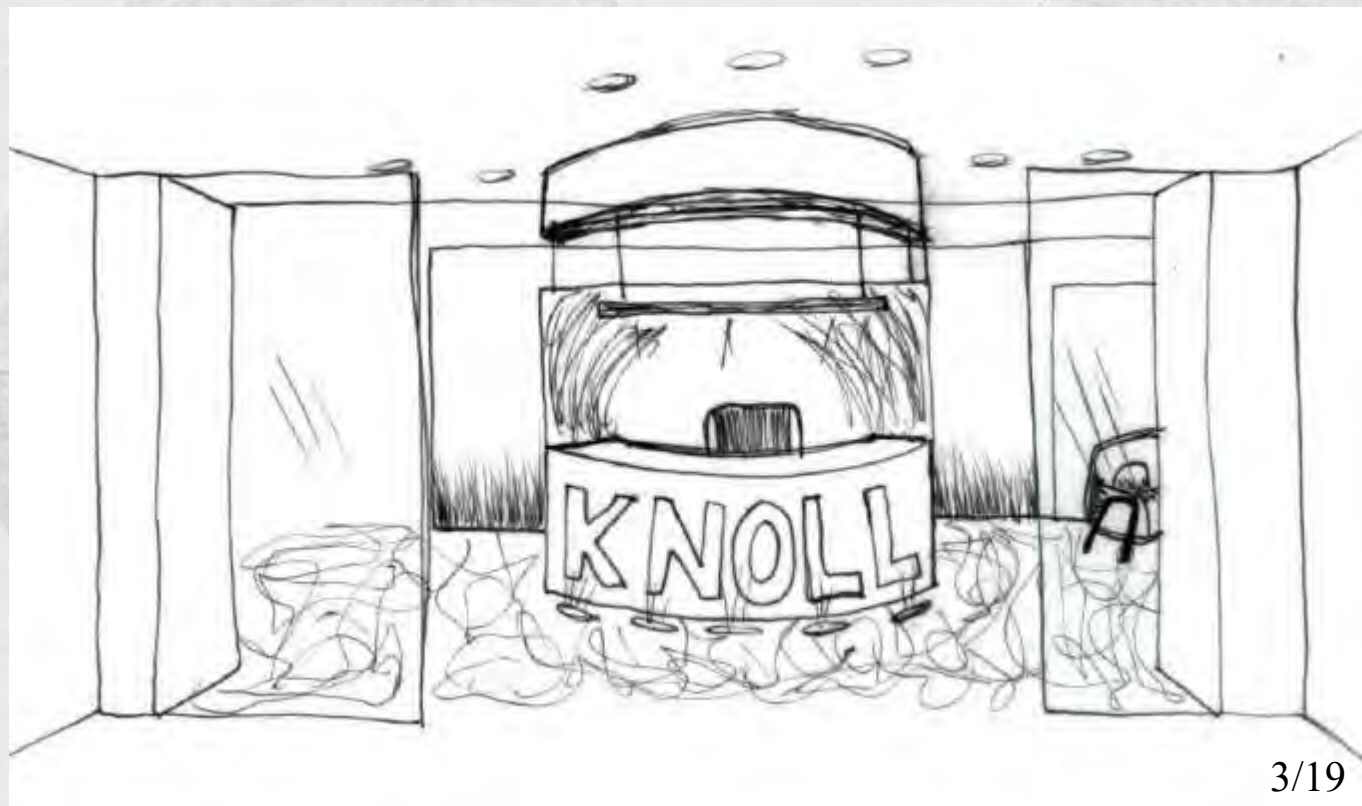


- Panel system on ceiling
- Small areas for collaboration
- Spacious individual workstations

HP

morPHH

Design Development: Entry



- Rounded reception desk
- Filzfelt drop down
- Drop down lighting

- Marble flooring
- Knoll logo on reception desk
- Warm colors/ lighting

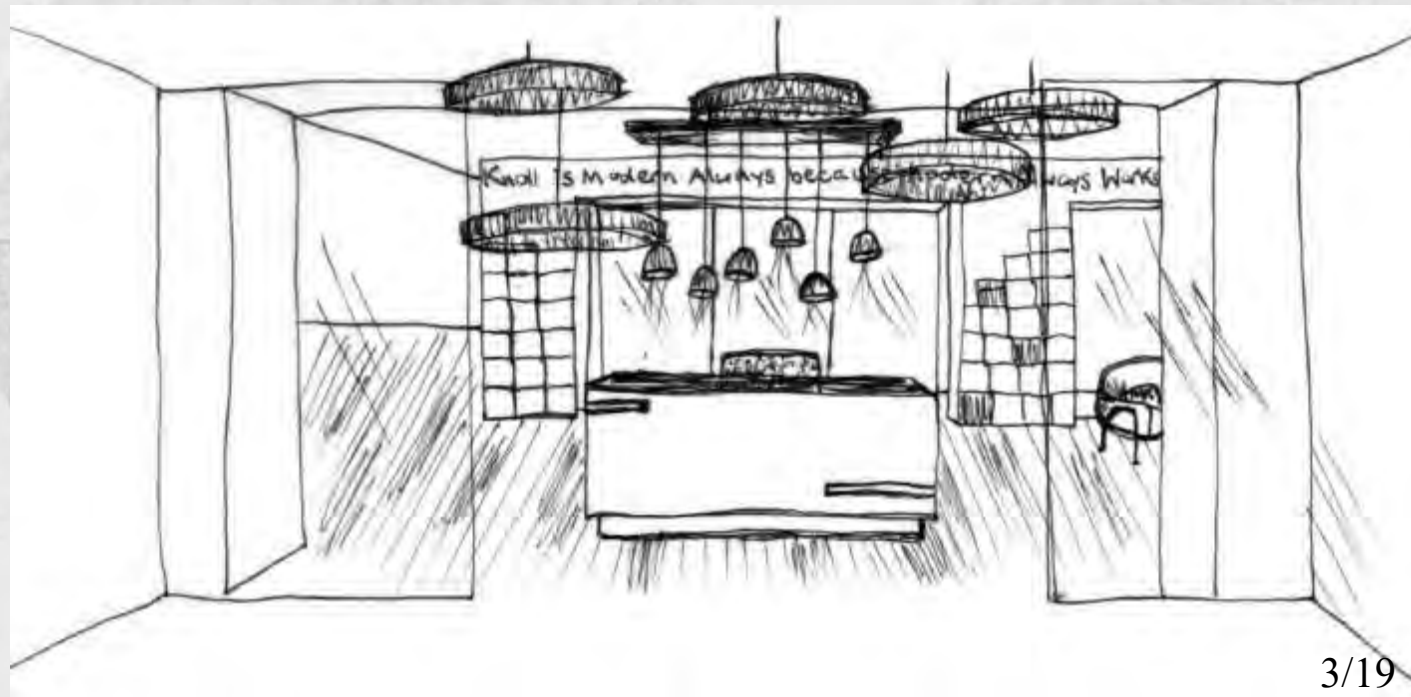
- Knoll quote on hanging banner
- Florence & Hans iconic picture
- Emphasis on reception area

- Stainless steel encased Filzfelt
- Define Knoll brand
- Leather wrapped beams

HP

morPHH

Design Development: Entry



- Warm welcoming lighting
- Bauhaus inspired detailing
- Iconic saying written on wall

- Laminate wood flooring
- Drop down lighting
- Bauhaus colors

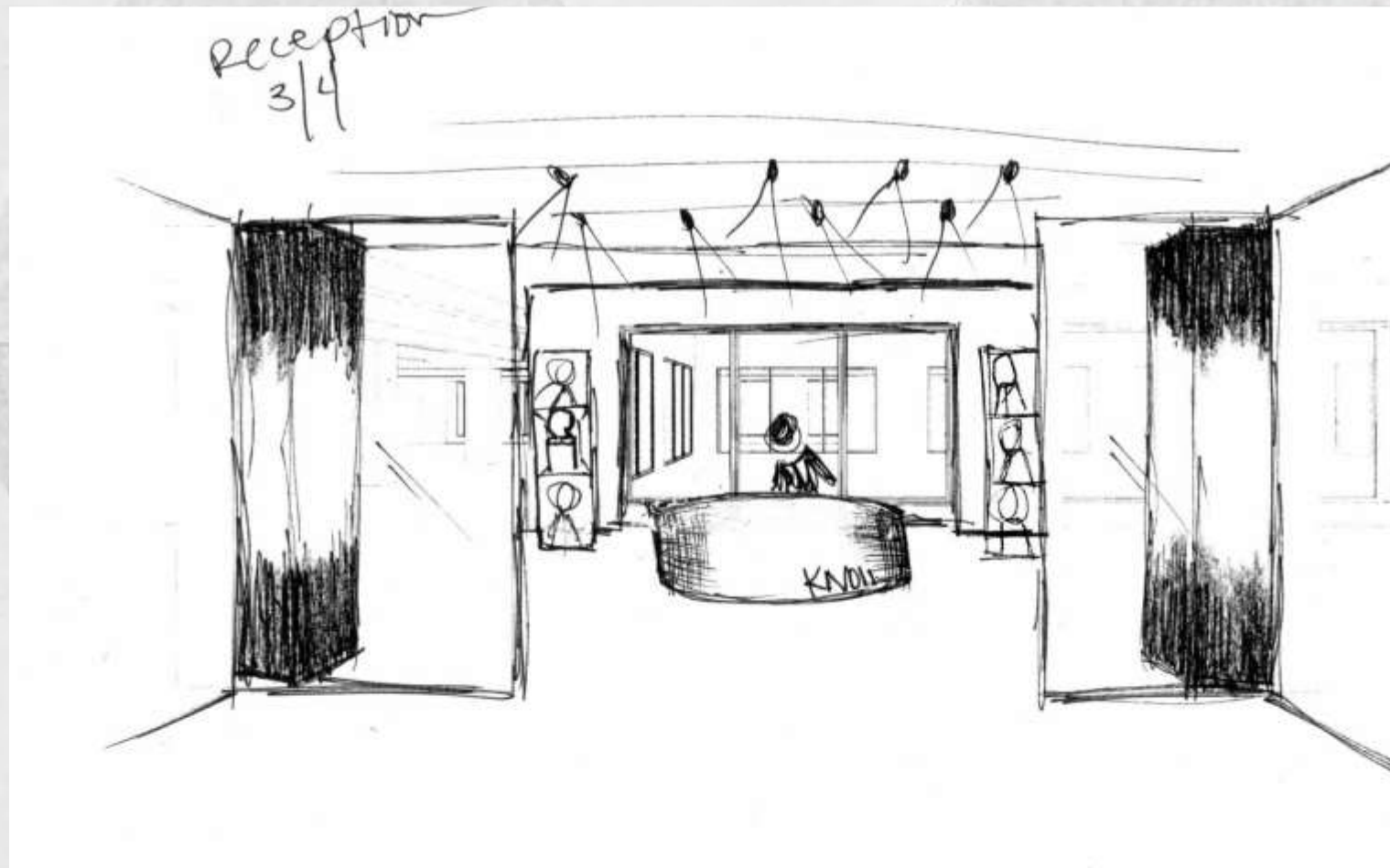
- Barcelona inspired reception desk
- Warm lantern style lights
- Draw attention to desk

- Filzfelt on ceiling
- Iconic Florence & Hans images
- Marble flooring (Bauhaus)

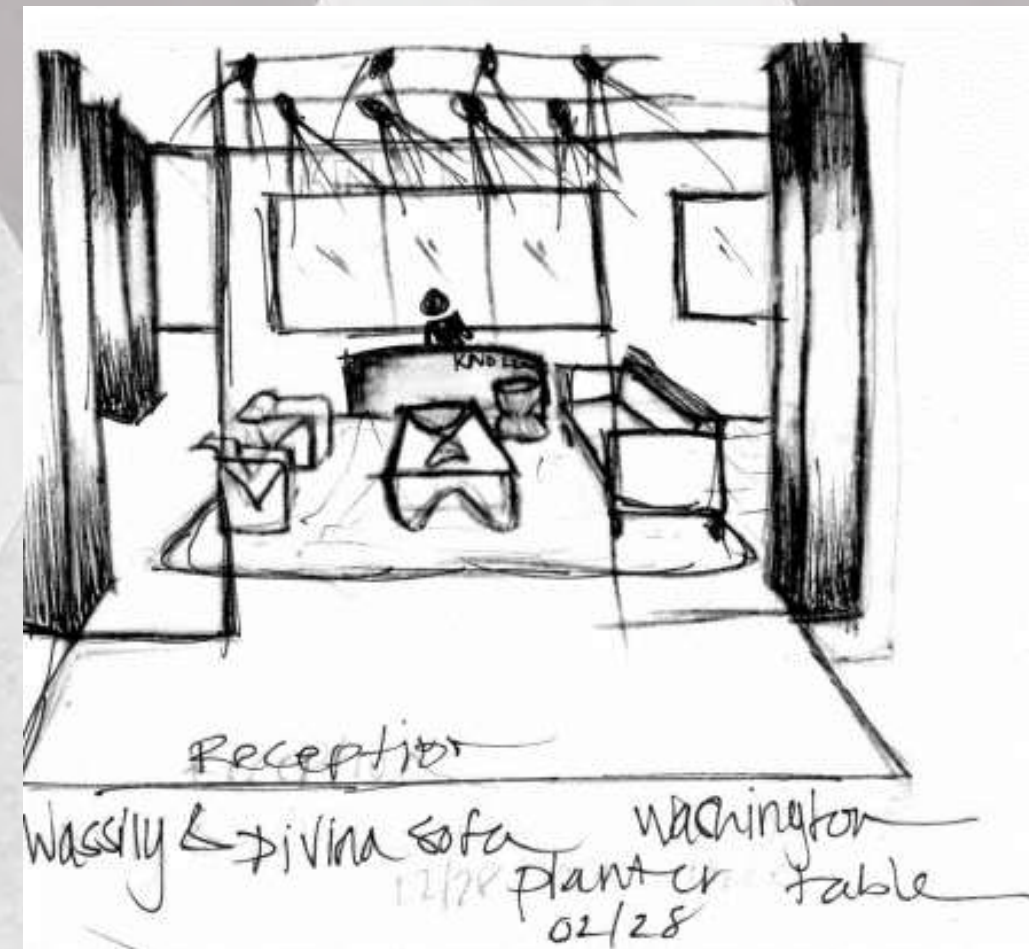
PHH

morPHH

Design Development: Entry



- Track lighting
- Rounded reception desk
- Hans and Florence portraits



- Wassily chair and Divina sofa
- Homey feel
- Track lighting

HP

morPHH

Materials & Finishes



HP

morPHH

