



Christy
Reynolds

Jacob
Austin

Anna
Nichols

Something Greek

Retail Research

- A successful layout is essential in gaining customers.
- The entrance is key to first impressions
- The entrance is where one gets his feel for the environment: store, coordination, organization
- The right wall when entering, should entice the customers with high demand and seasonal items
- As customers walk through, use colors and textures to grab one's attention
- Encourage loitering with signage to force impulse buying, while
- Leaving space for navigating
- Have your register on the left side, front of the store, while adding
- And place seasonal products nearby to encourage impulse buys, but change it frequently
- Display necessities: slat wall, grid wall, shelves, tables, racks, showcases



Site Location

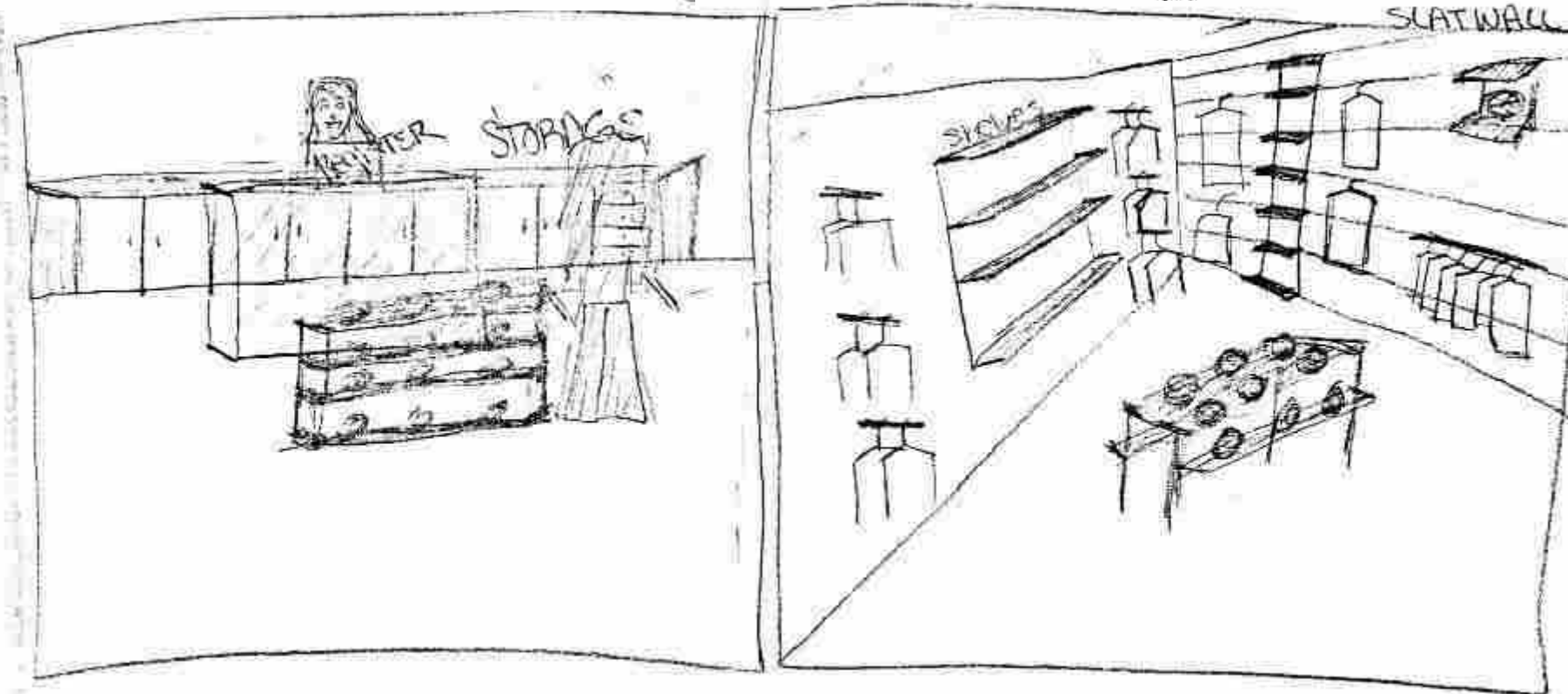
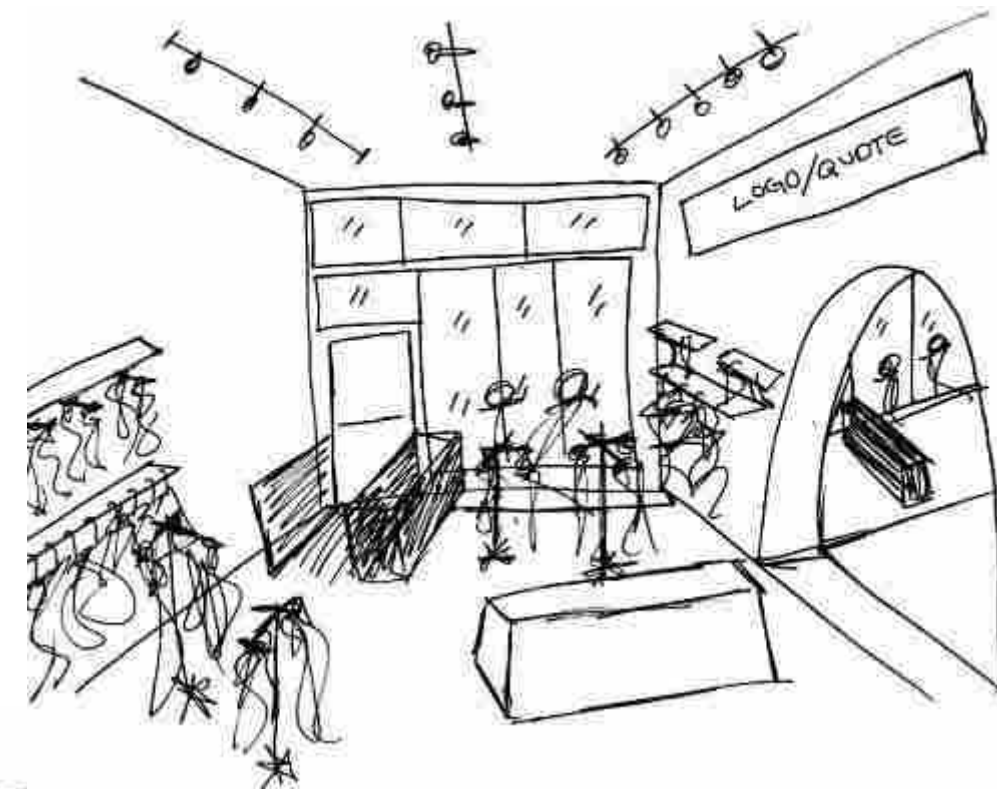
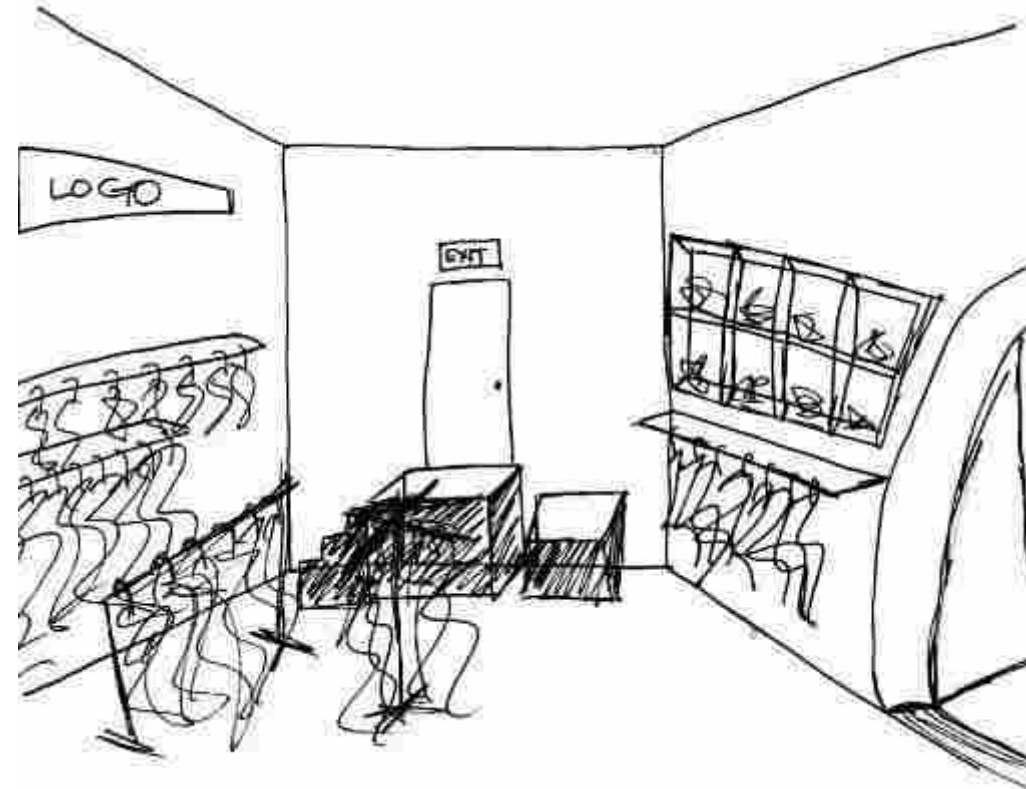


The location of these buildings is on 5th street which receives high foot traffic during the day and at night. The buildings are located near the popular Sup Dogs restaurant in uptown Greenville, NC.

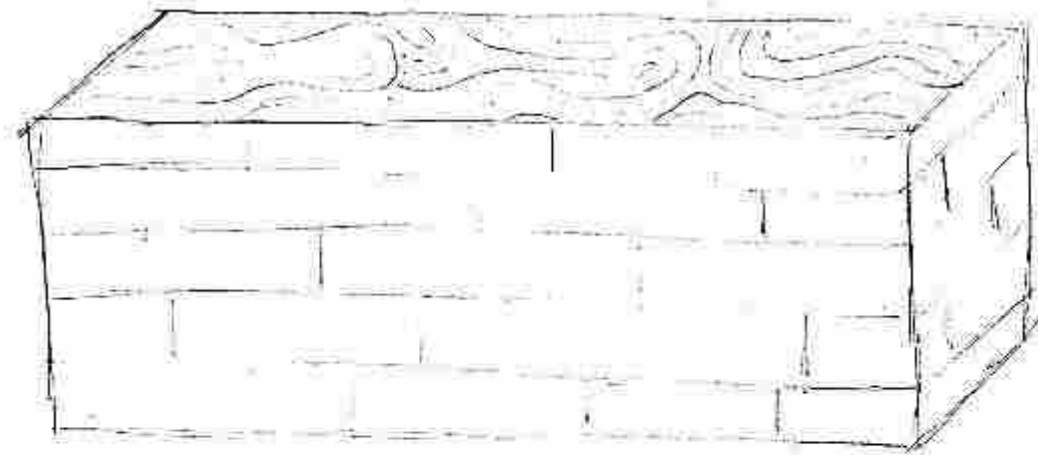
Inspiration Images



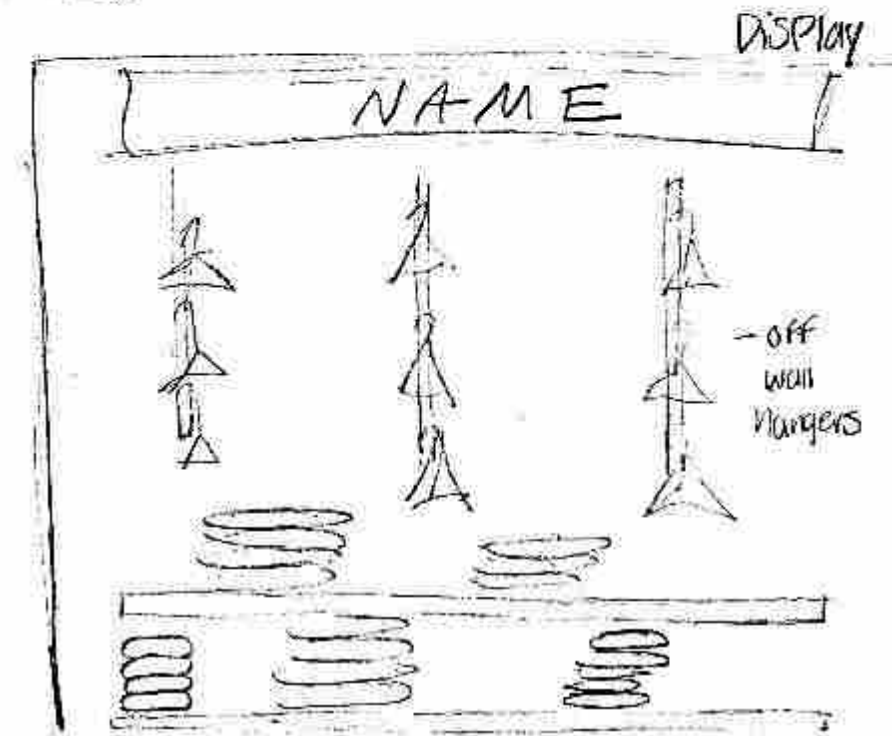
Schematic Design - Preliminary



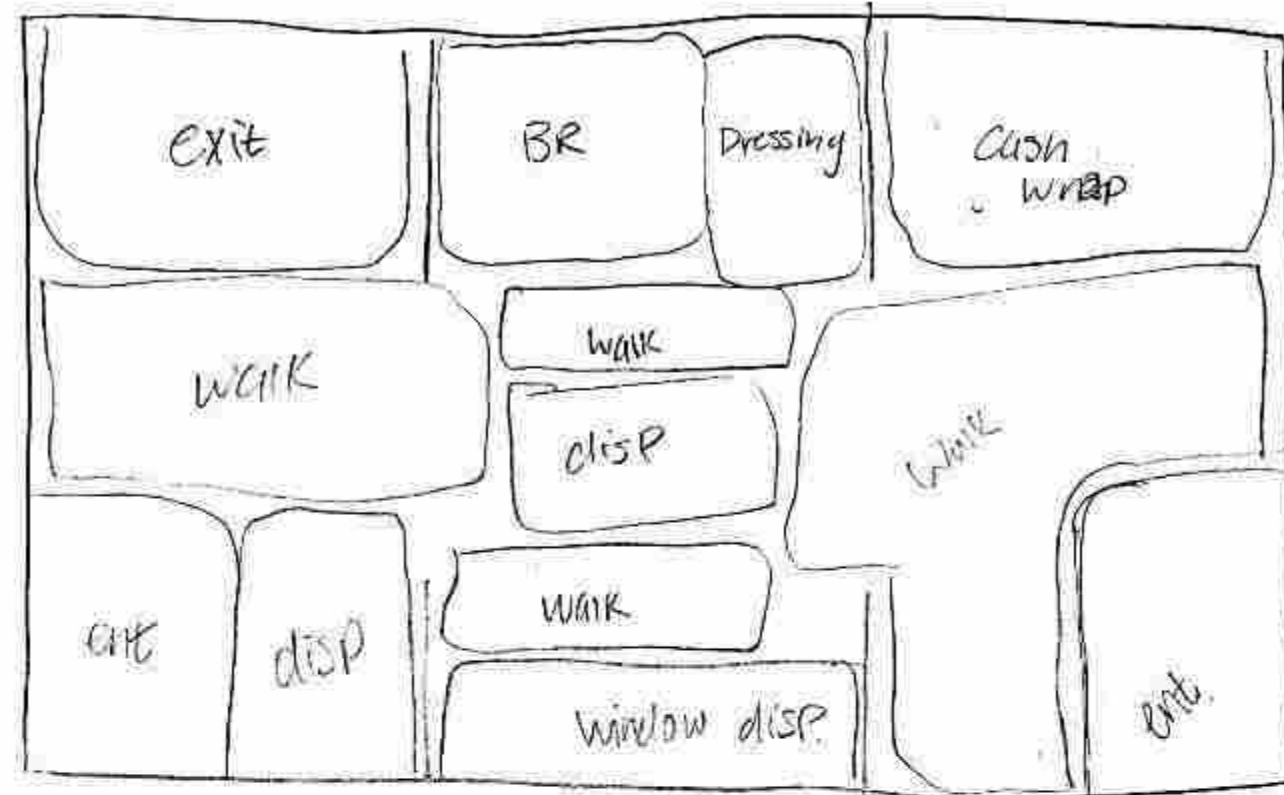
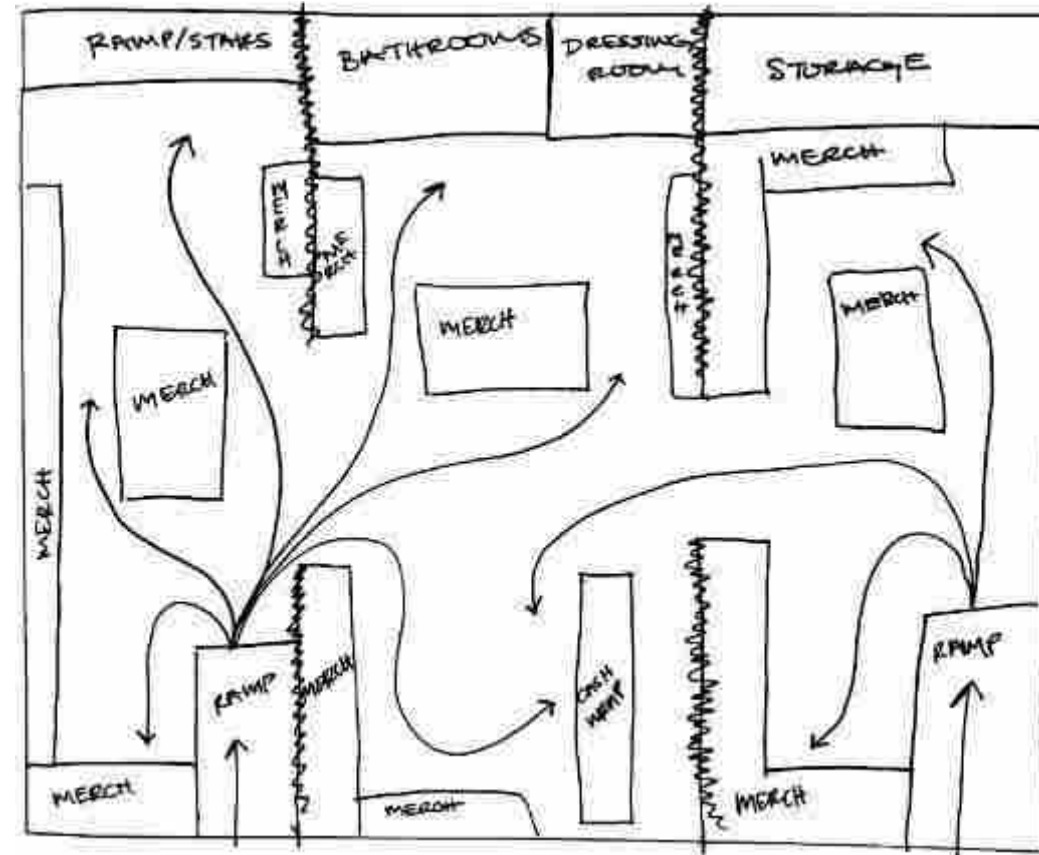
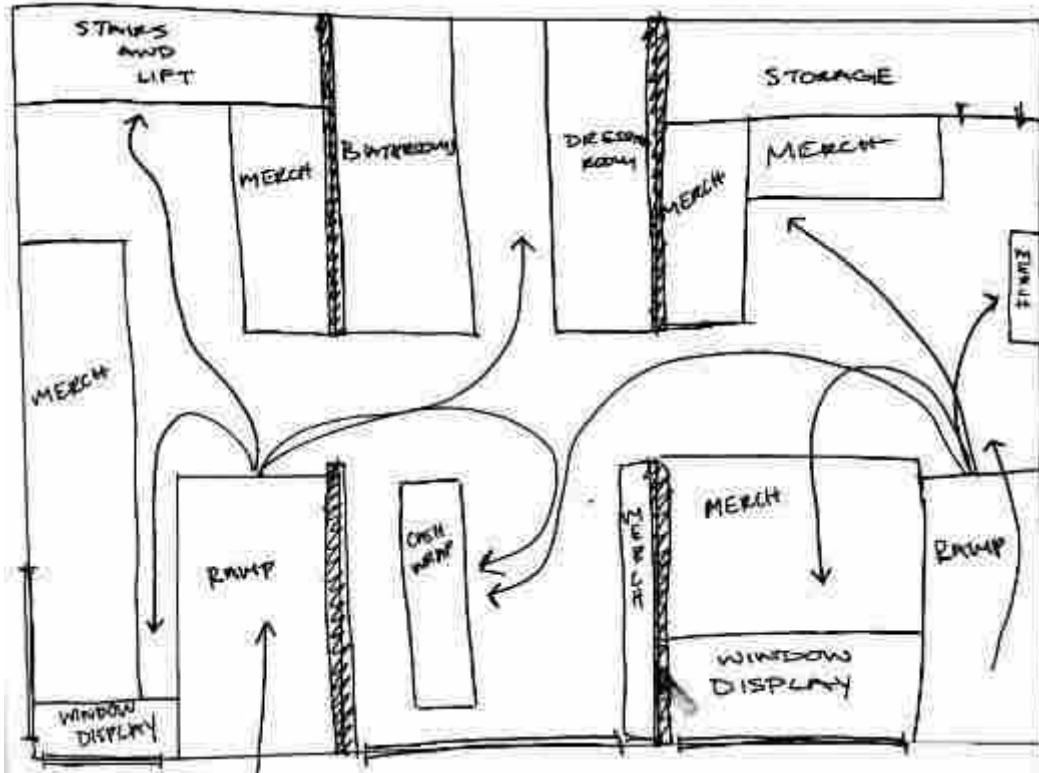
Schematic Design - Preliminary



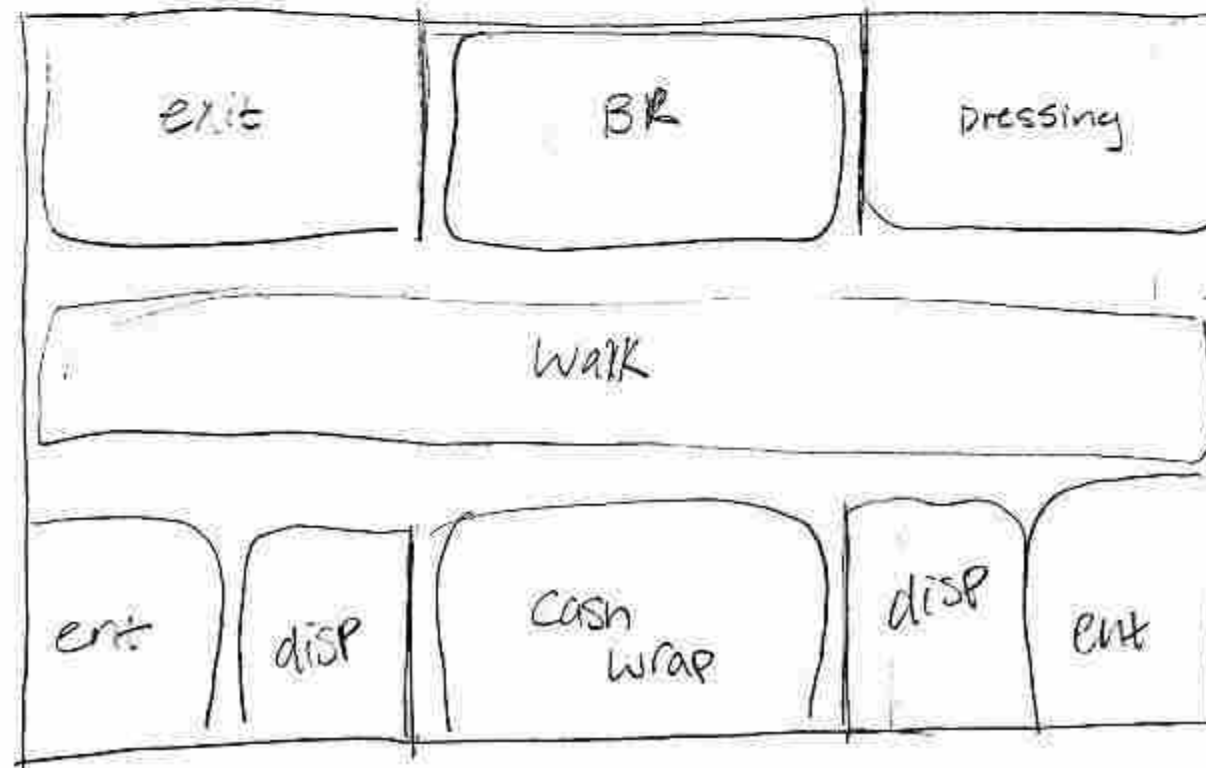
CASH WRAP → white wash wood



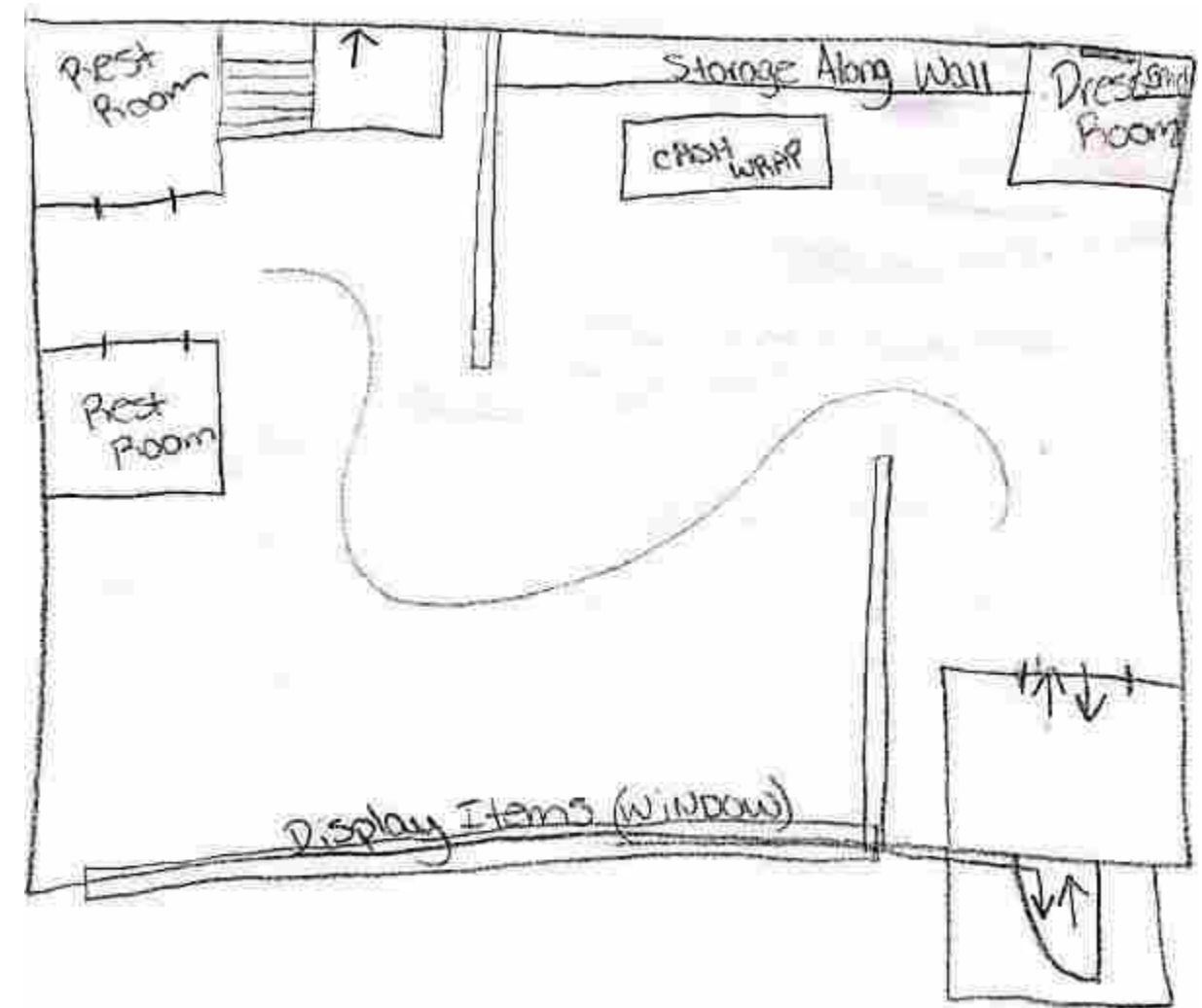
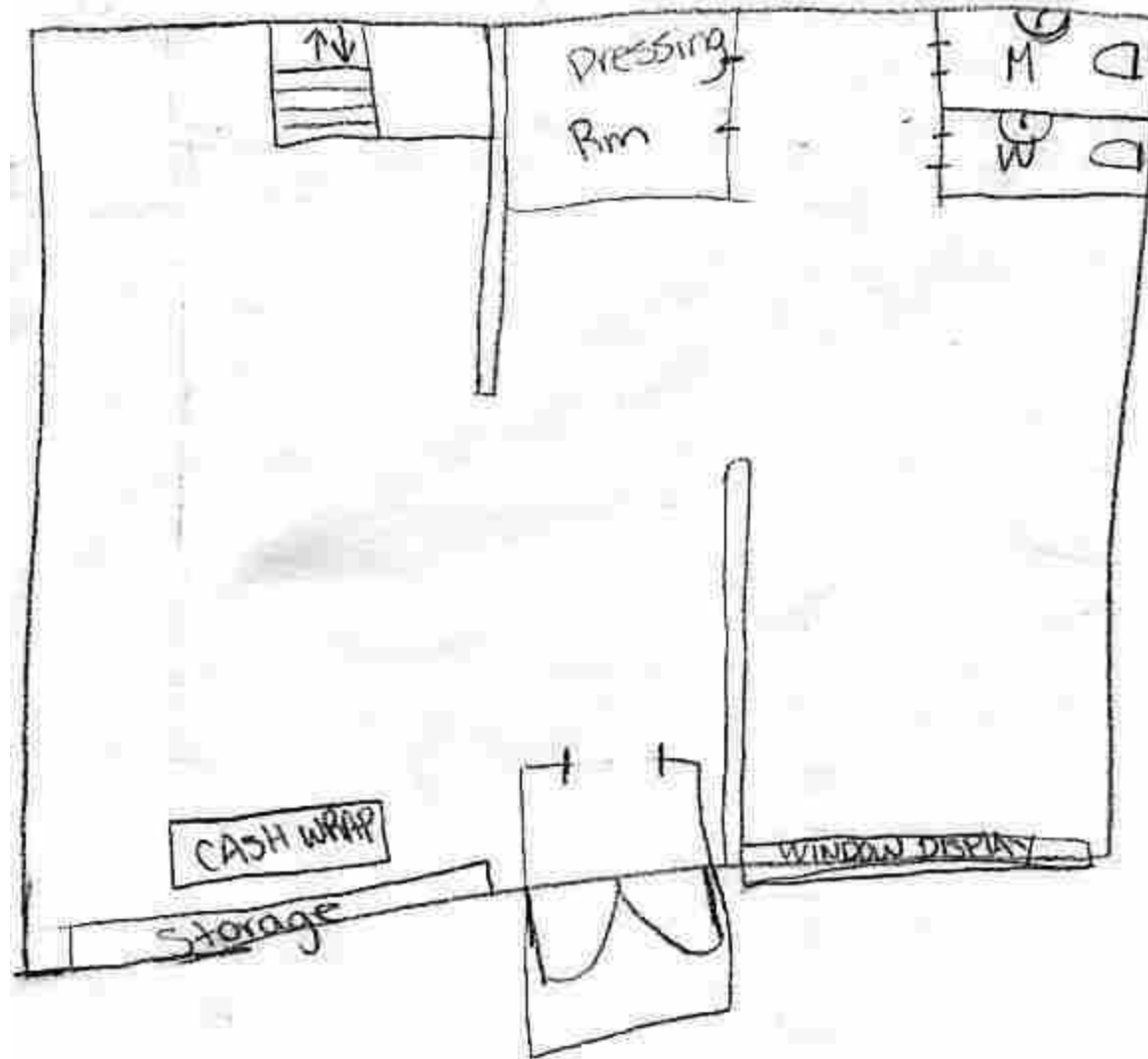
Blocking Plans - Preliminary



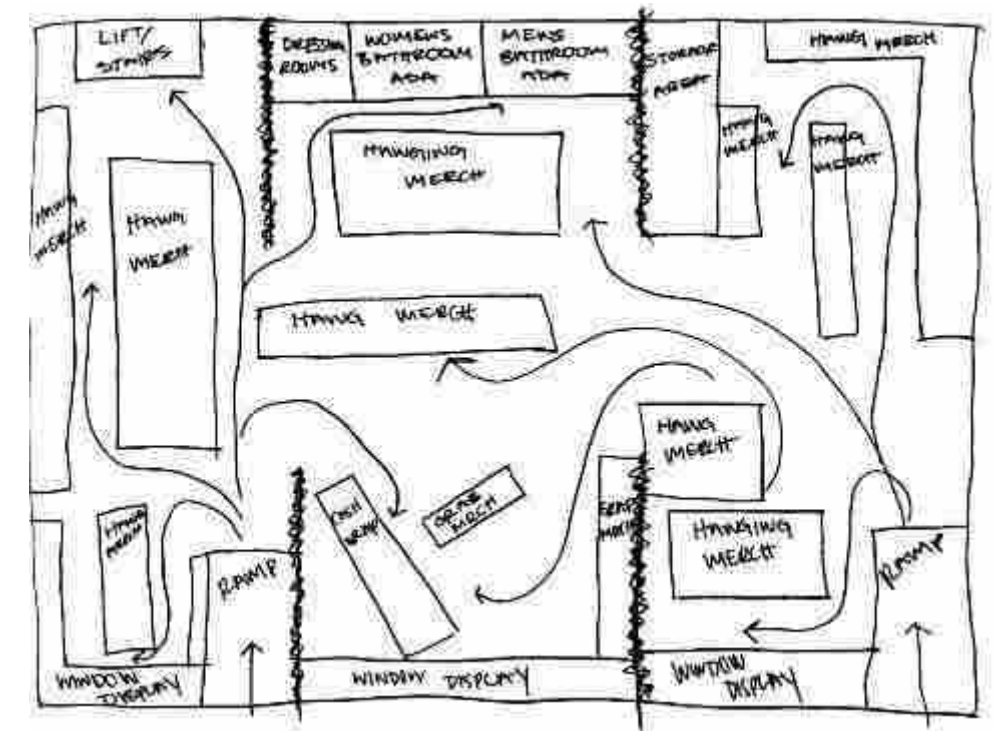
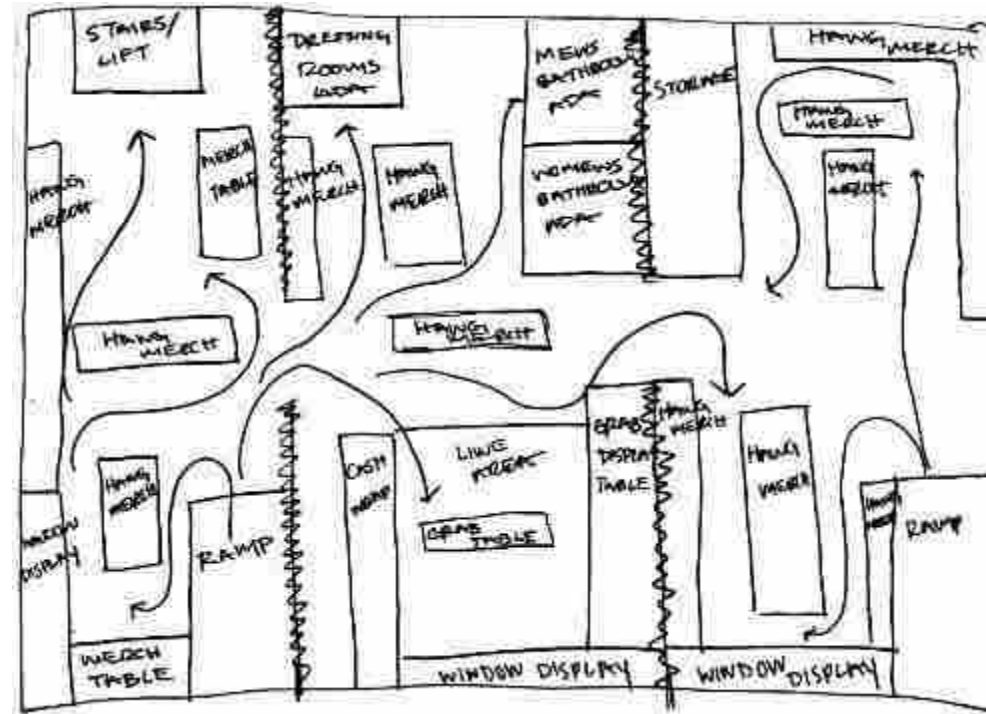
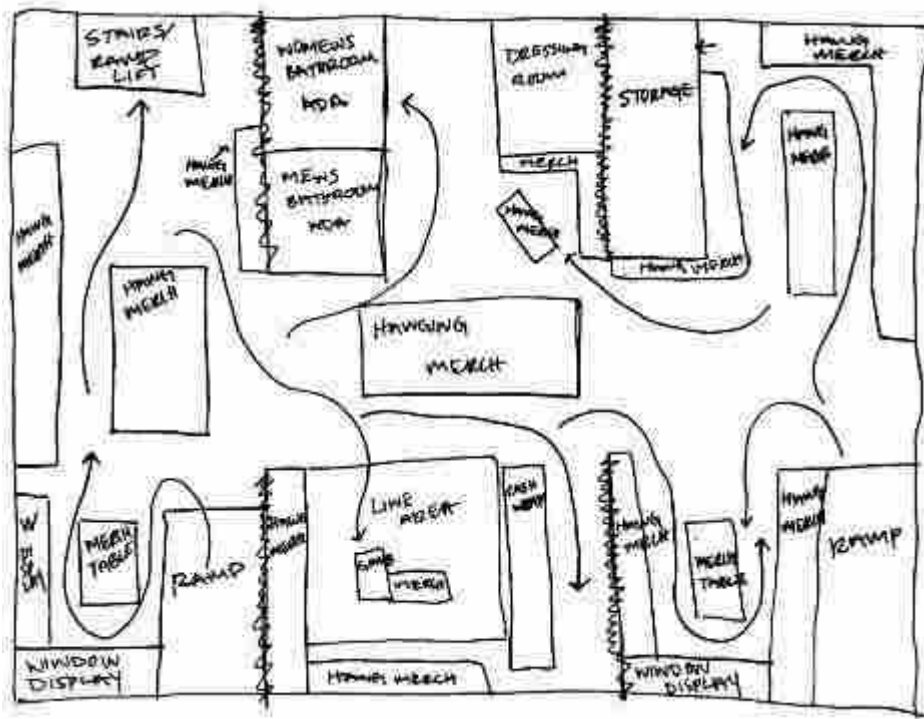
2 Block



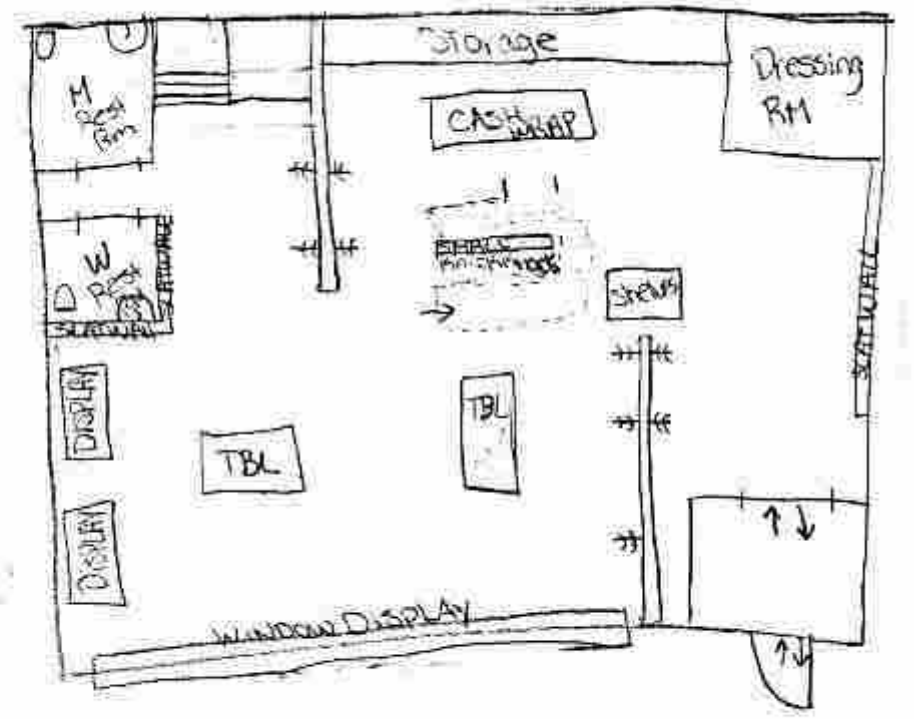
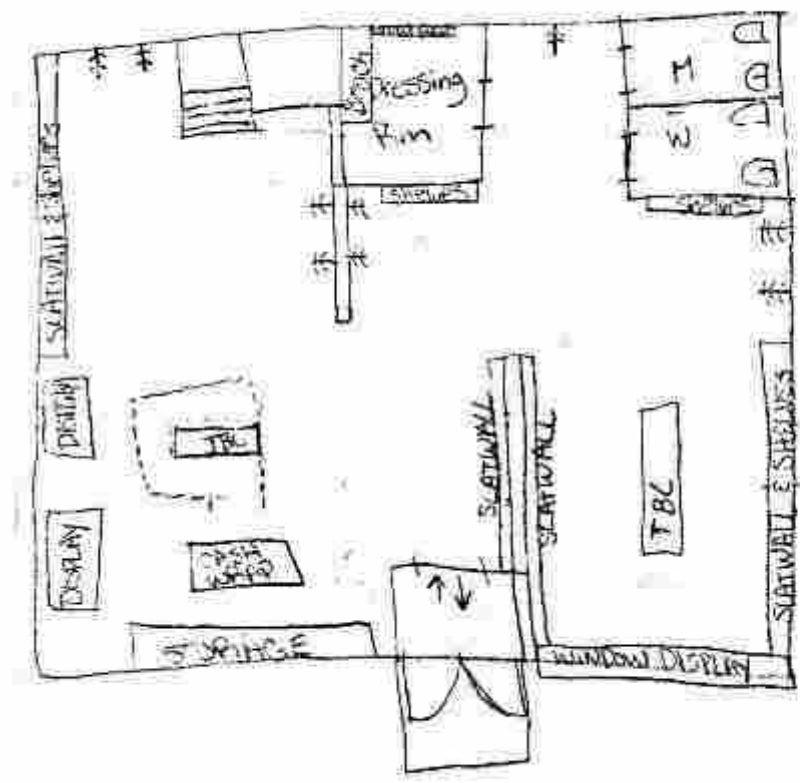
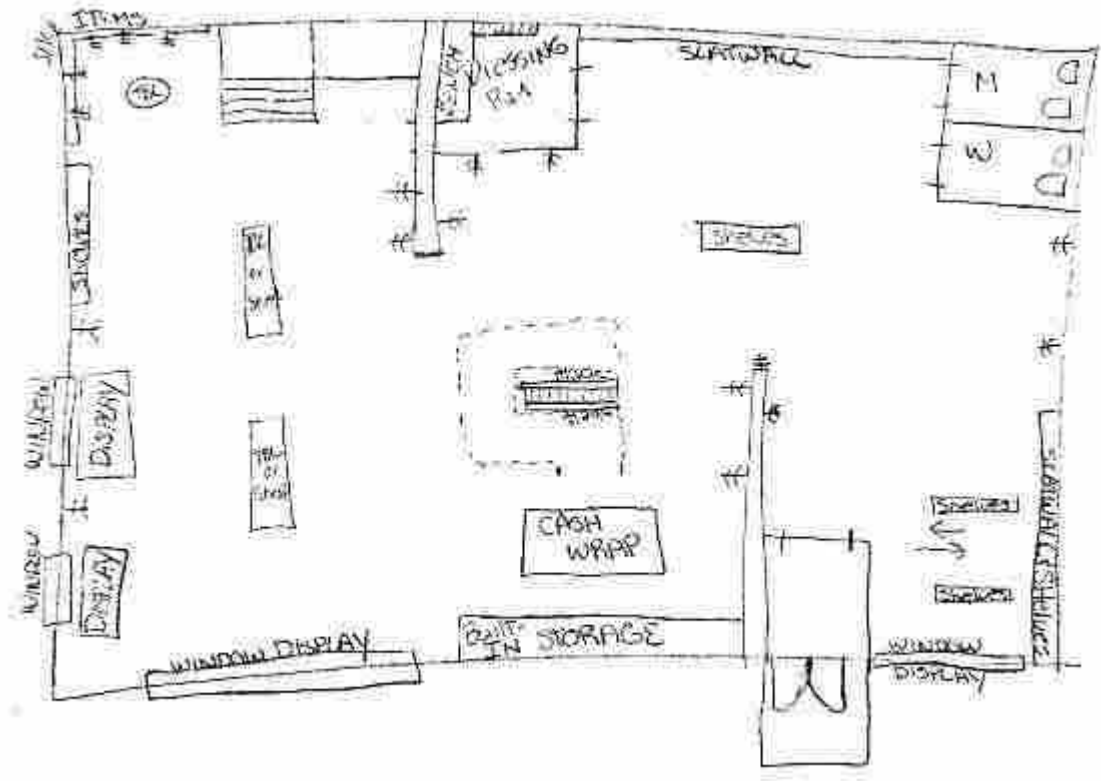
Blocking Plans - Preliminary



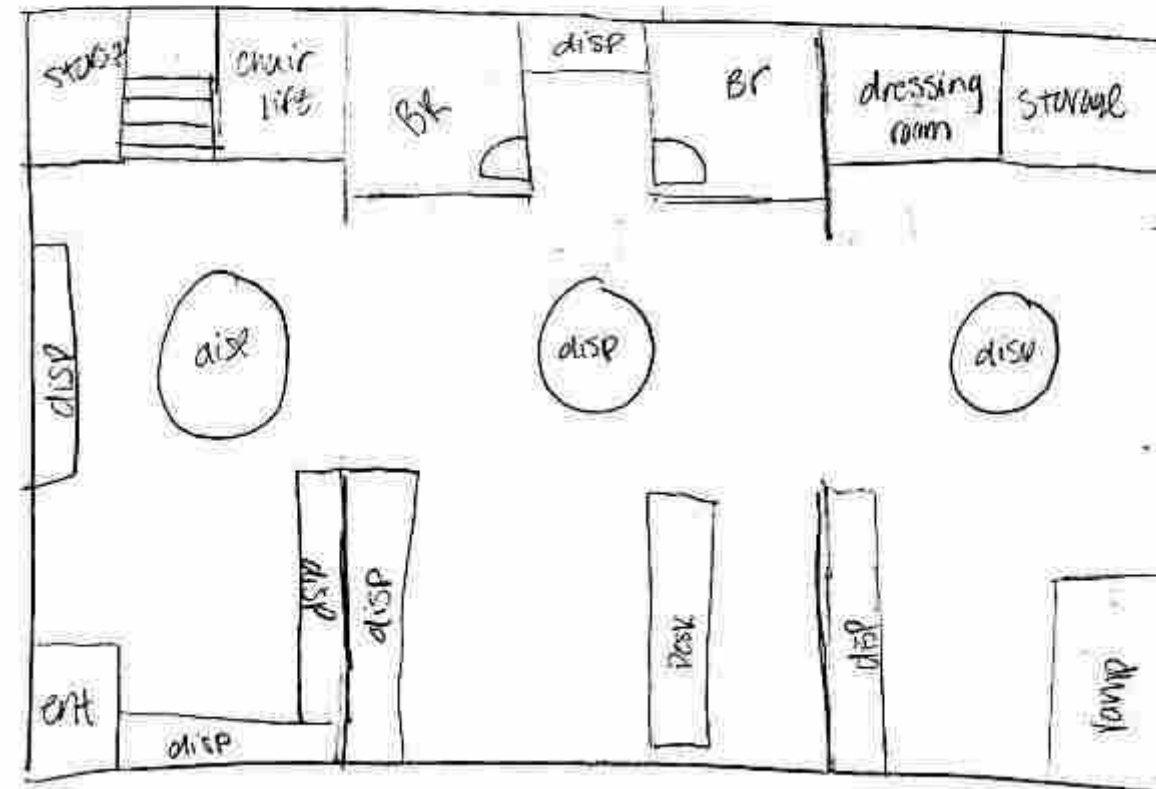
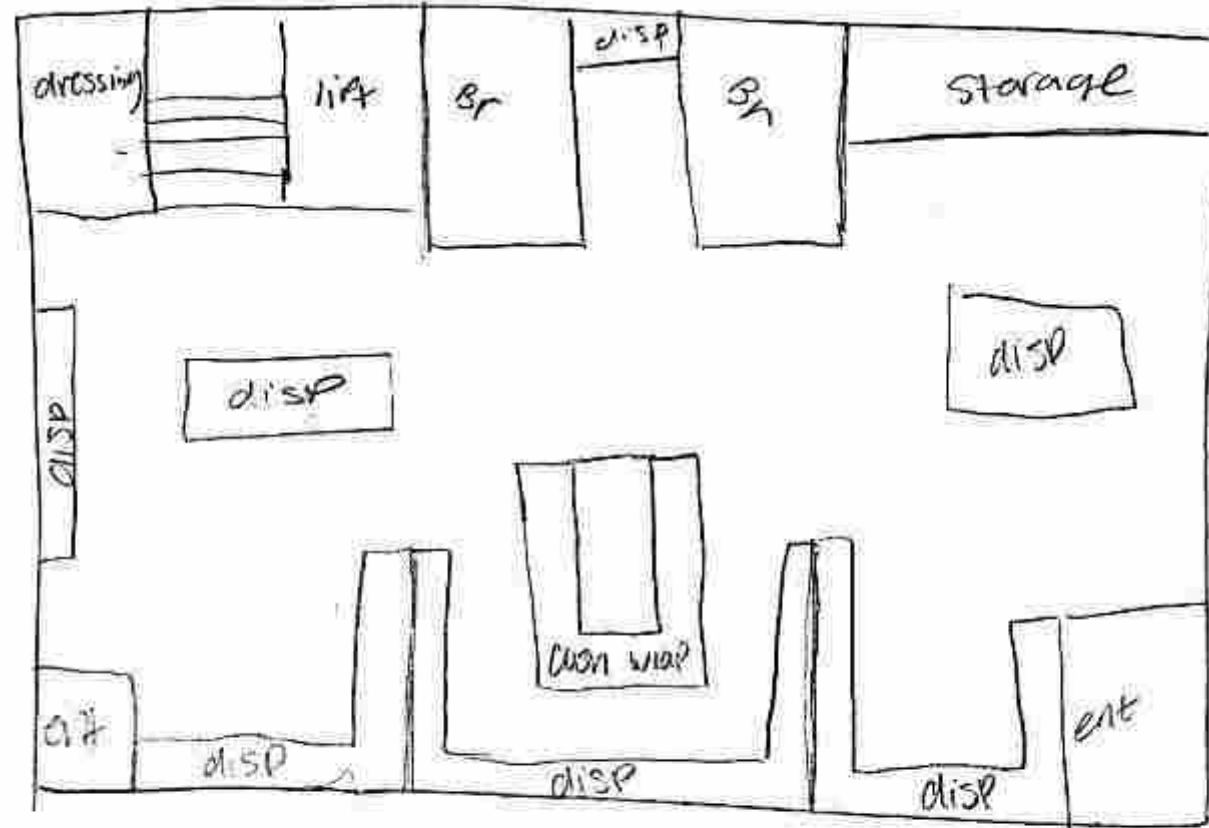
Space Plan Sketches – Preliminary



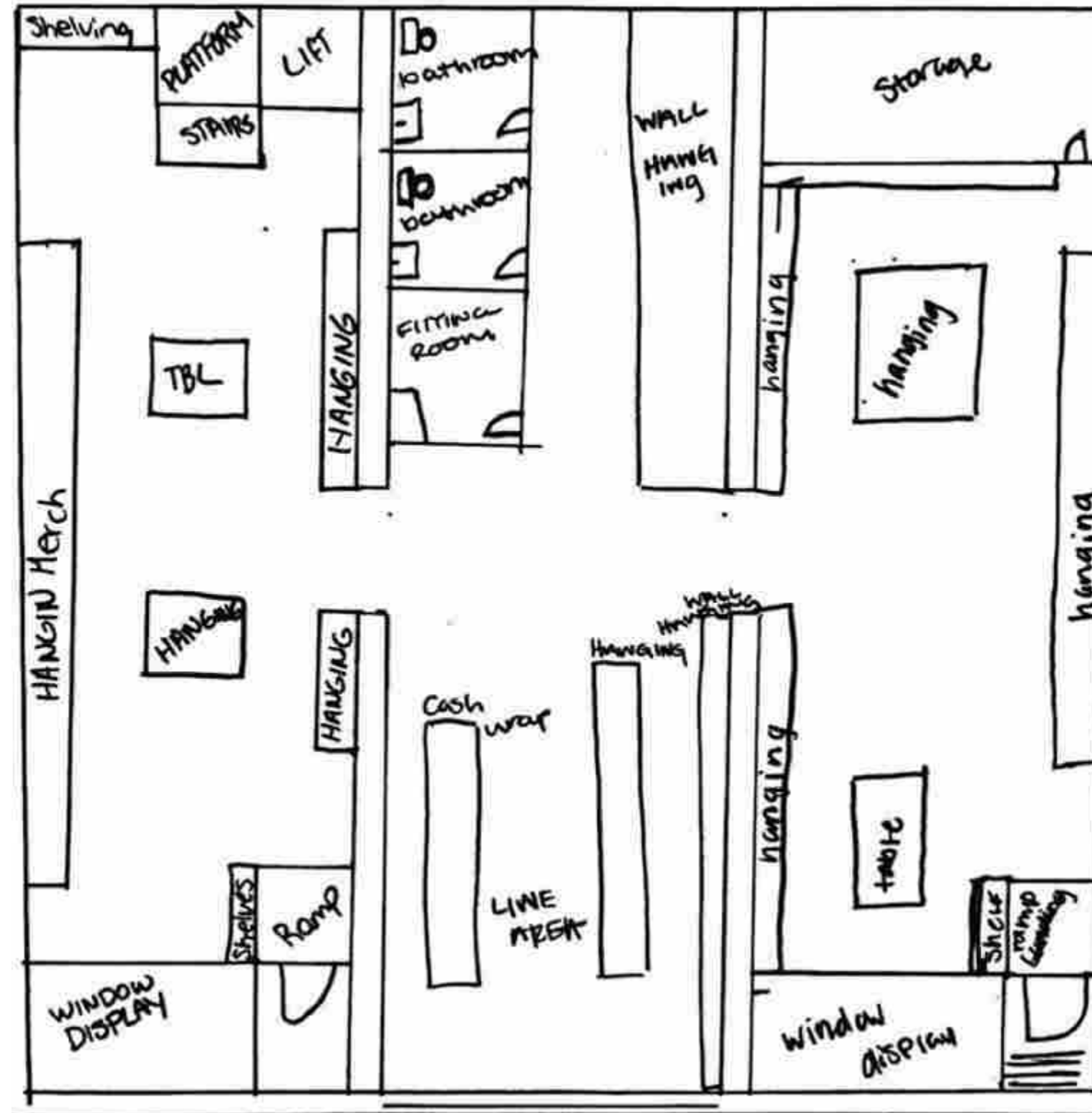
Space Plan Sketches - Preliminary



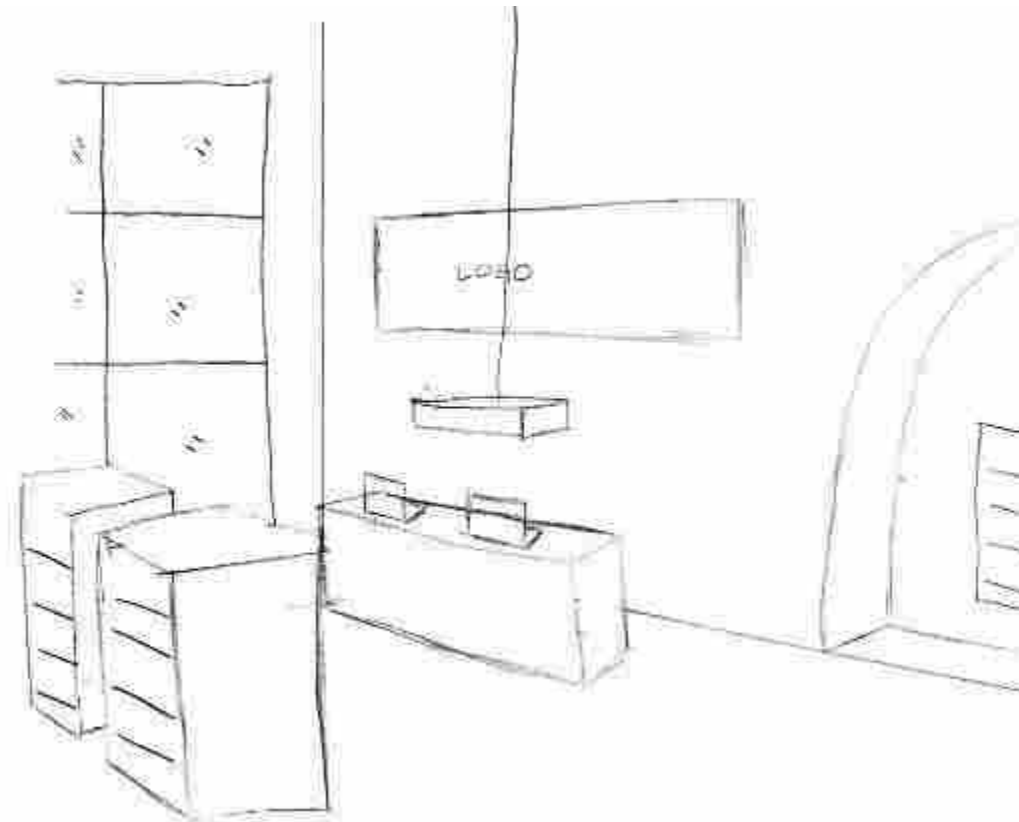
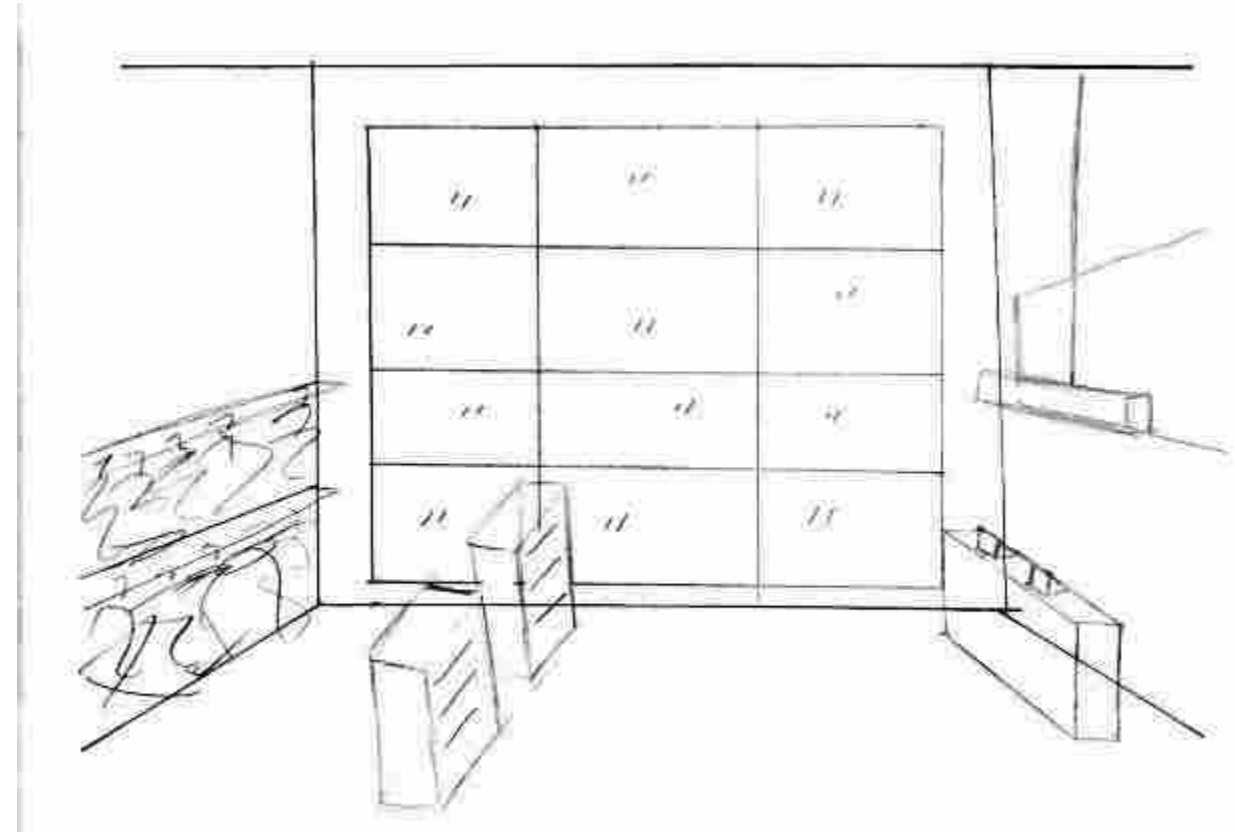
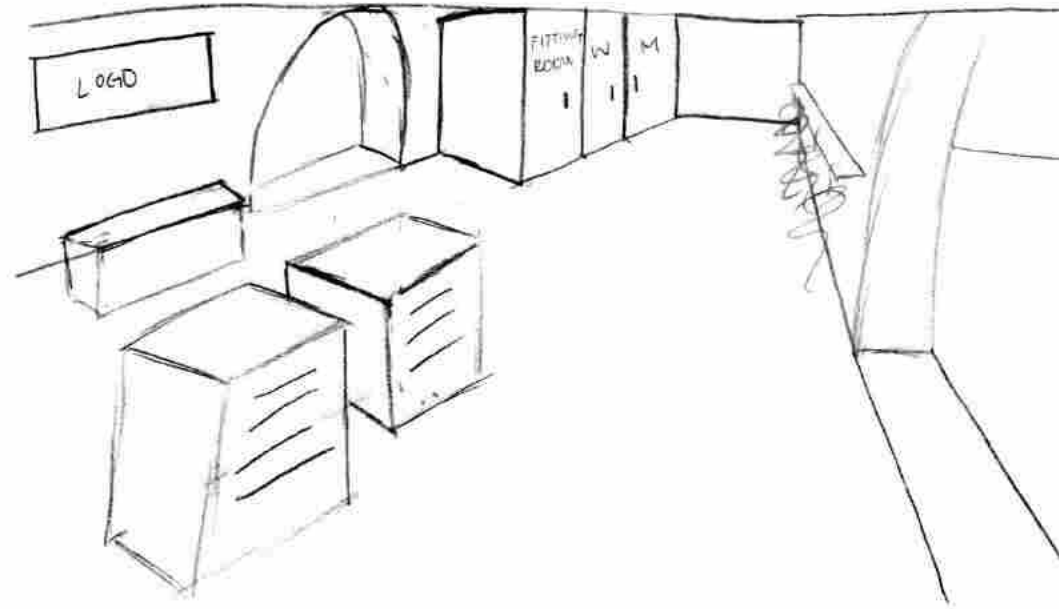
Space Plan Sketches - Preliminary



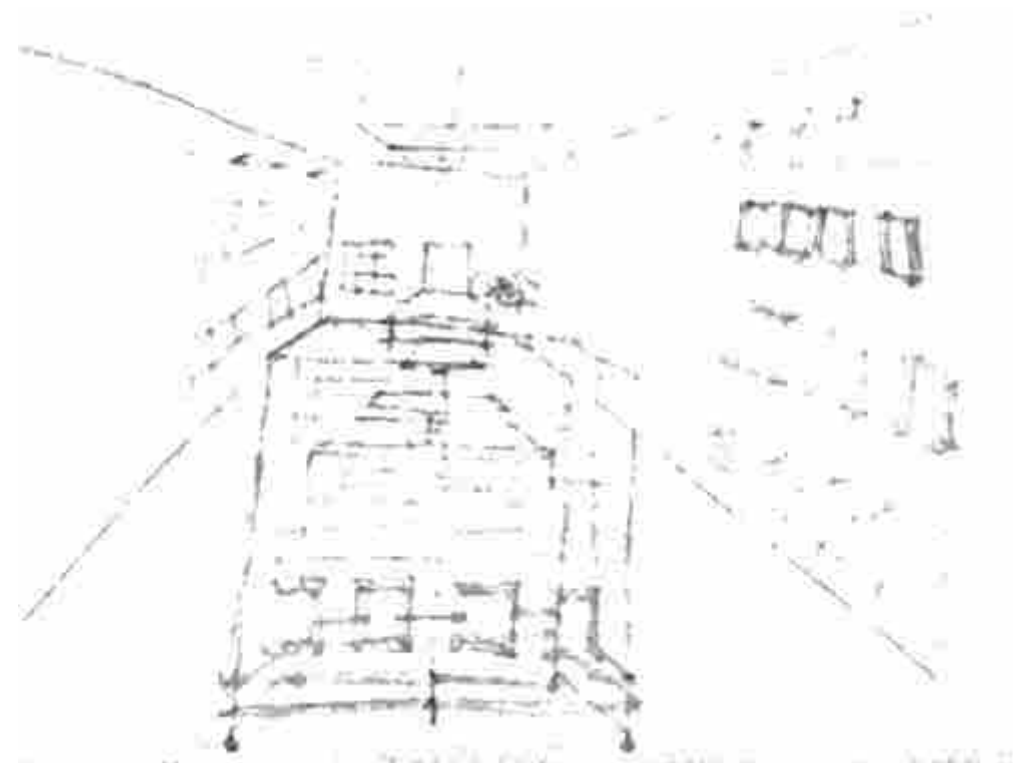
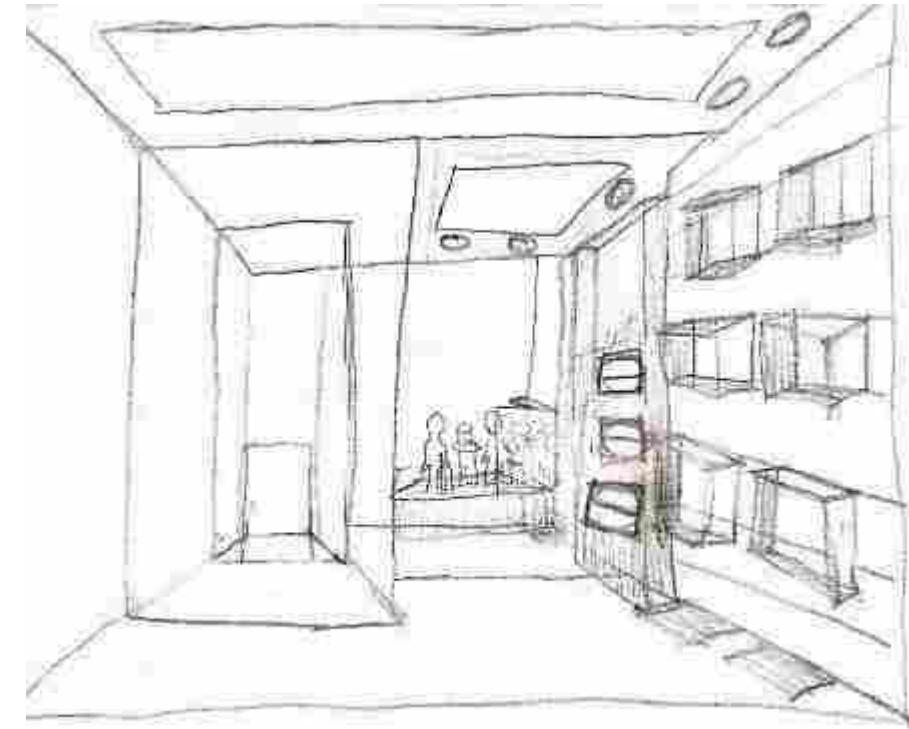
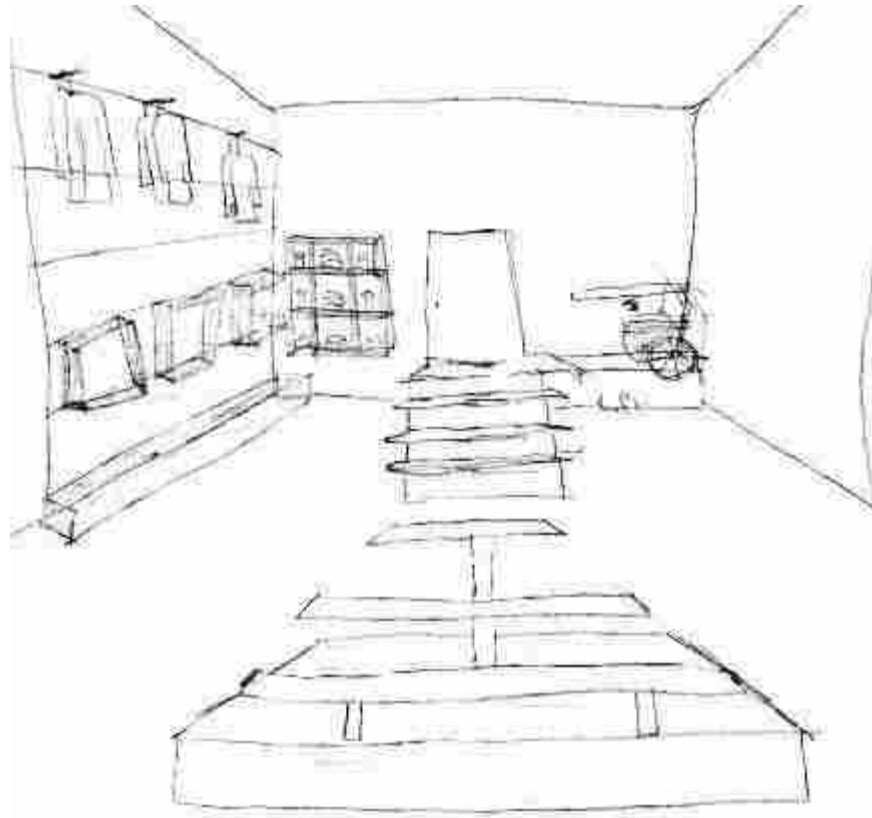
Upgraded Space Plan Sketches



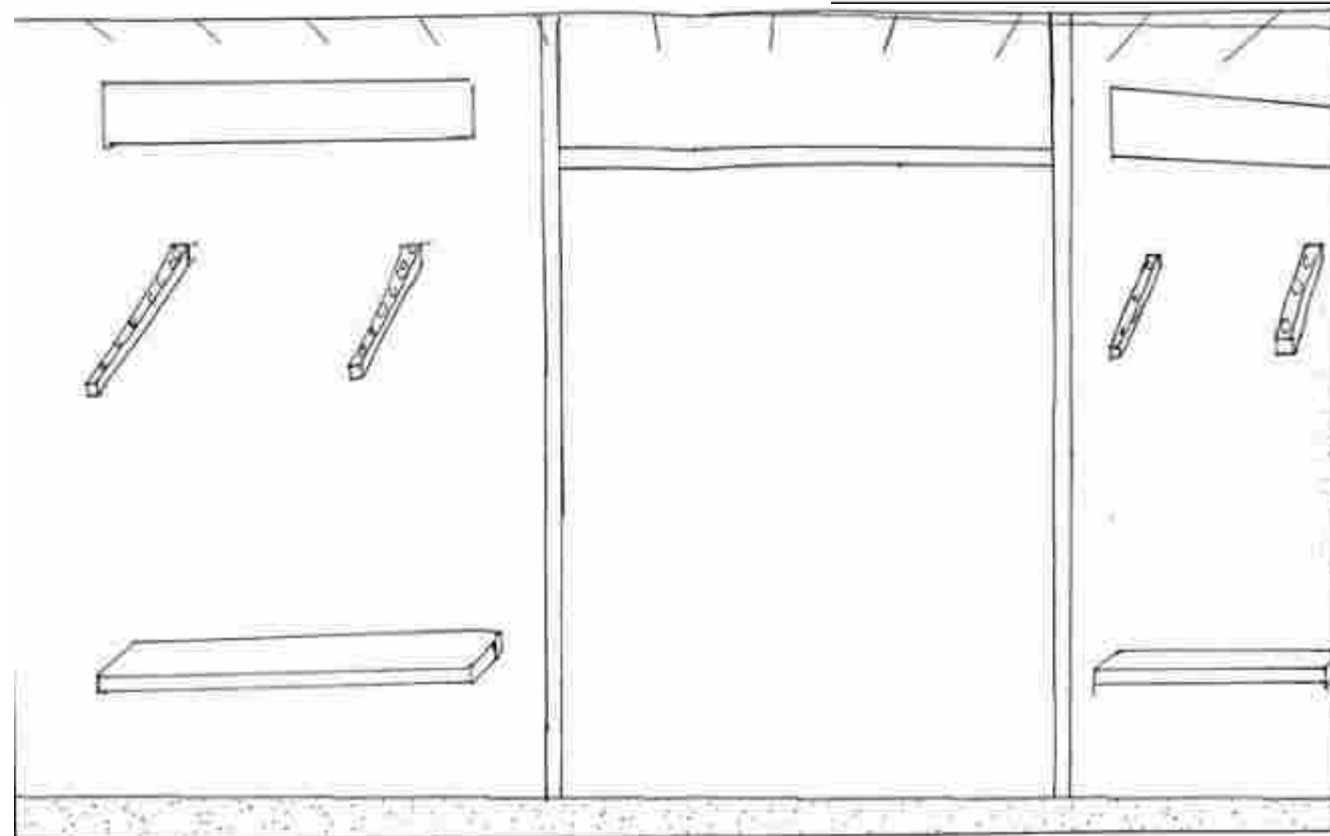
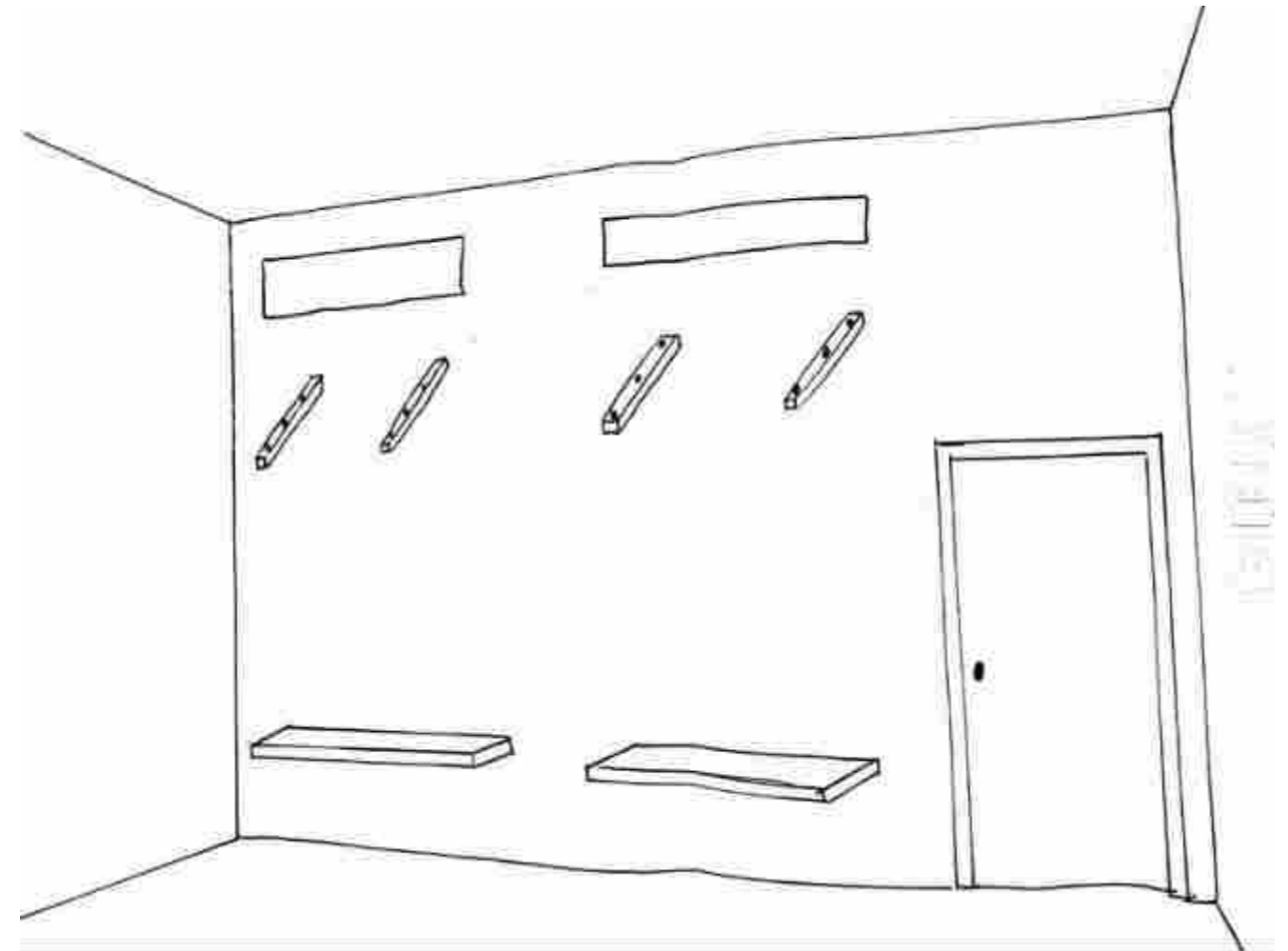
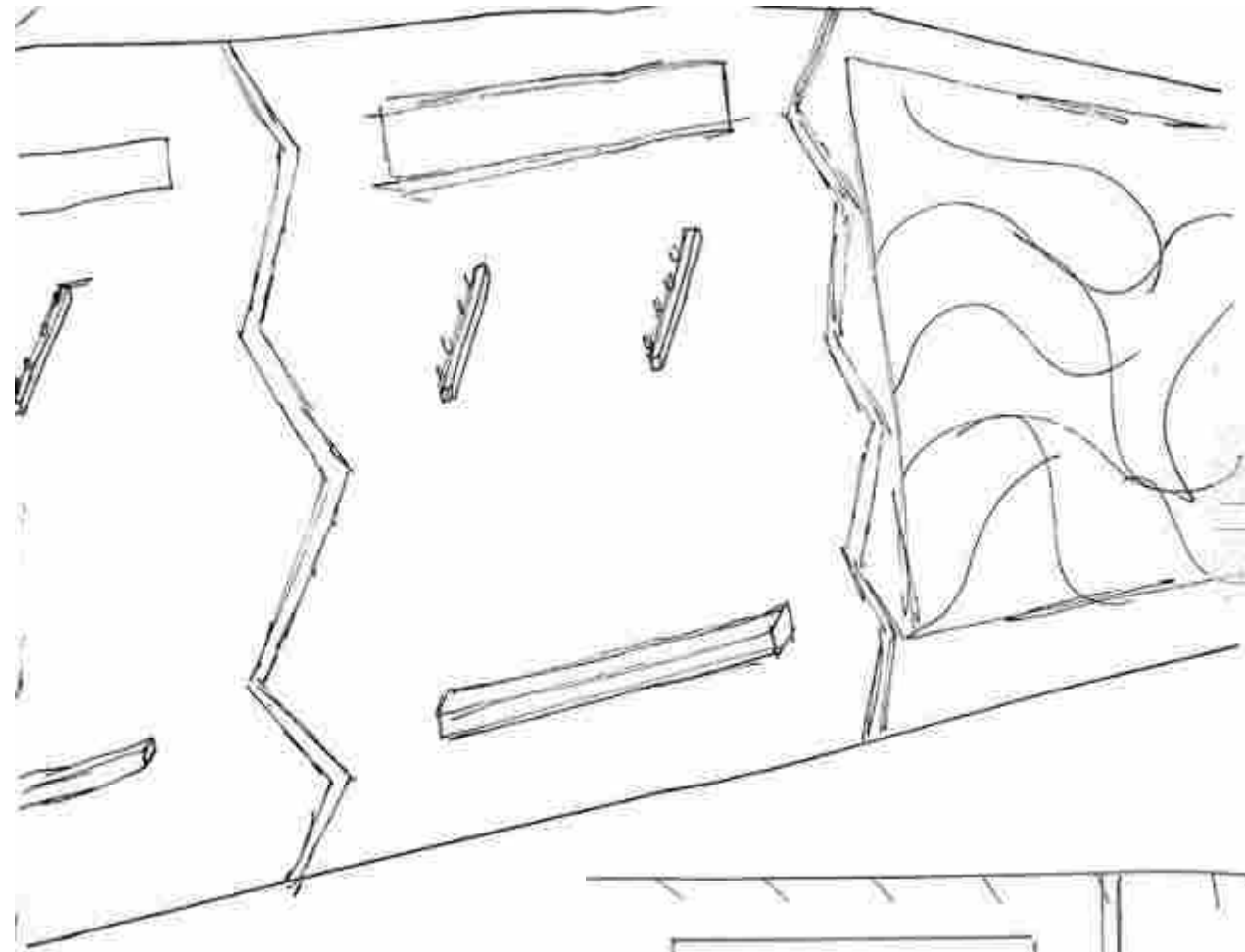
Interior Perspective Sketches



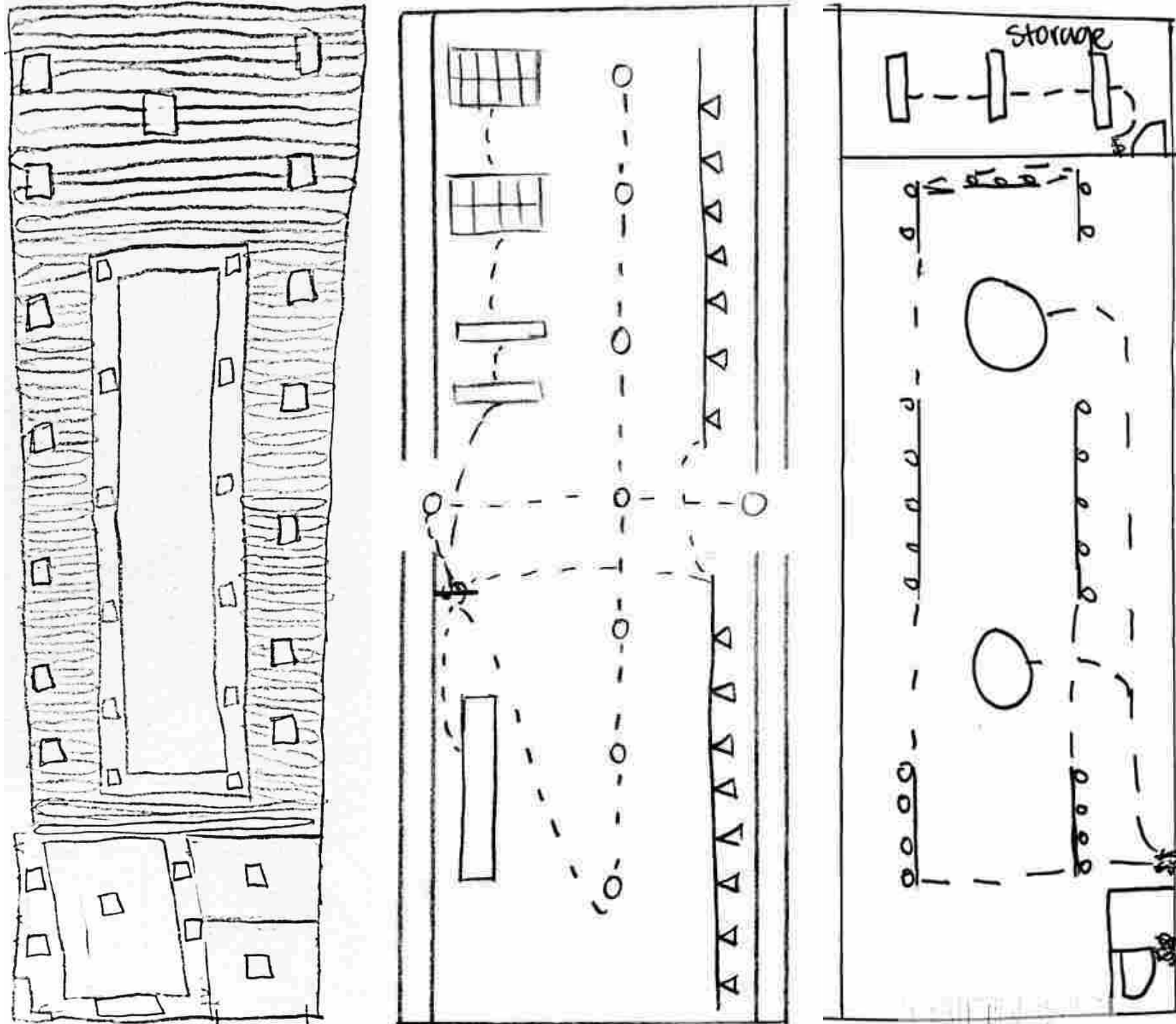
Interior Perspective Sketches



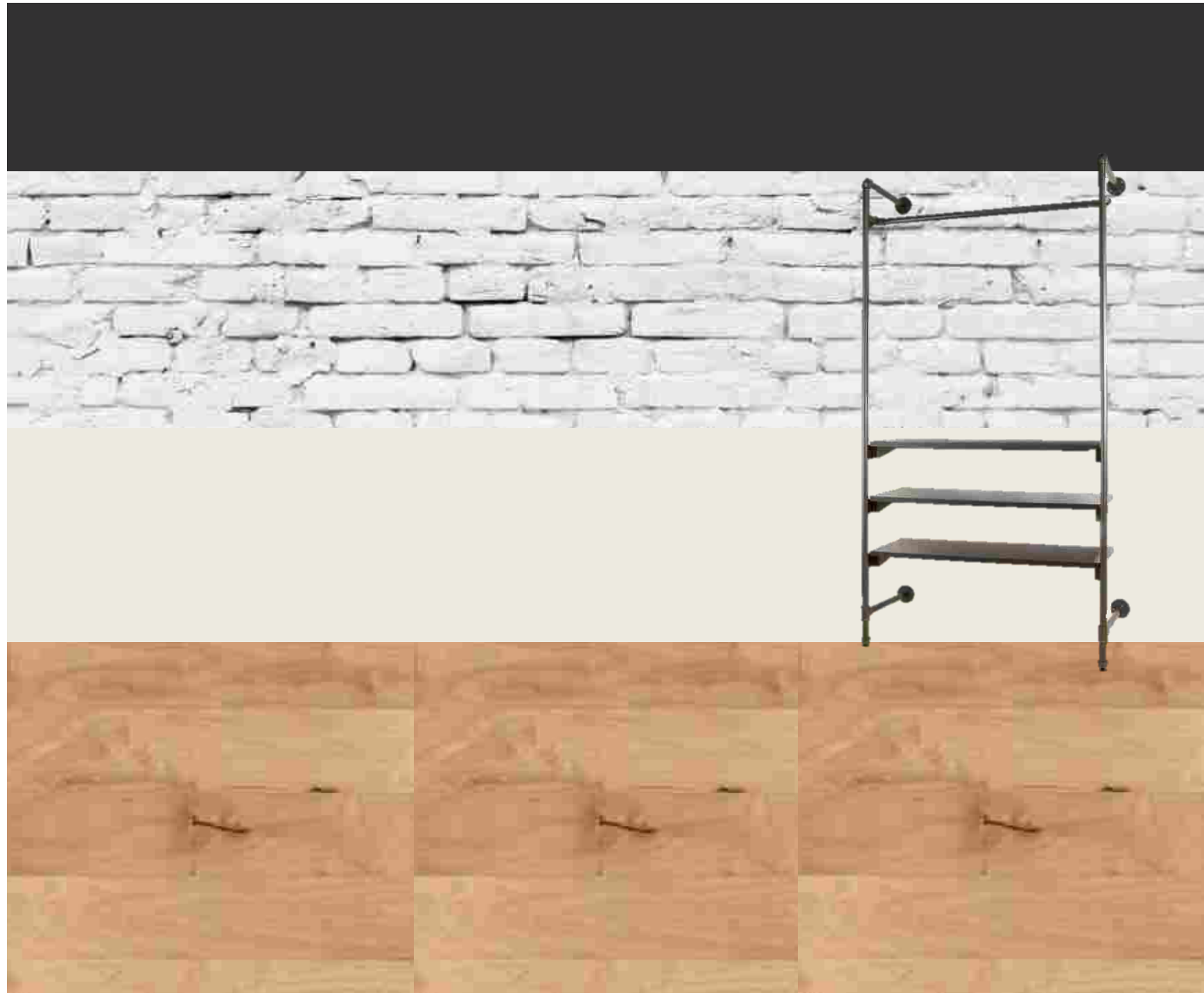
Interior Perspective Sketches



RCP Light & Systems



Furniture, Fixtures & Finishes

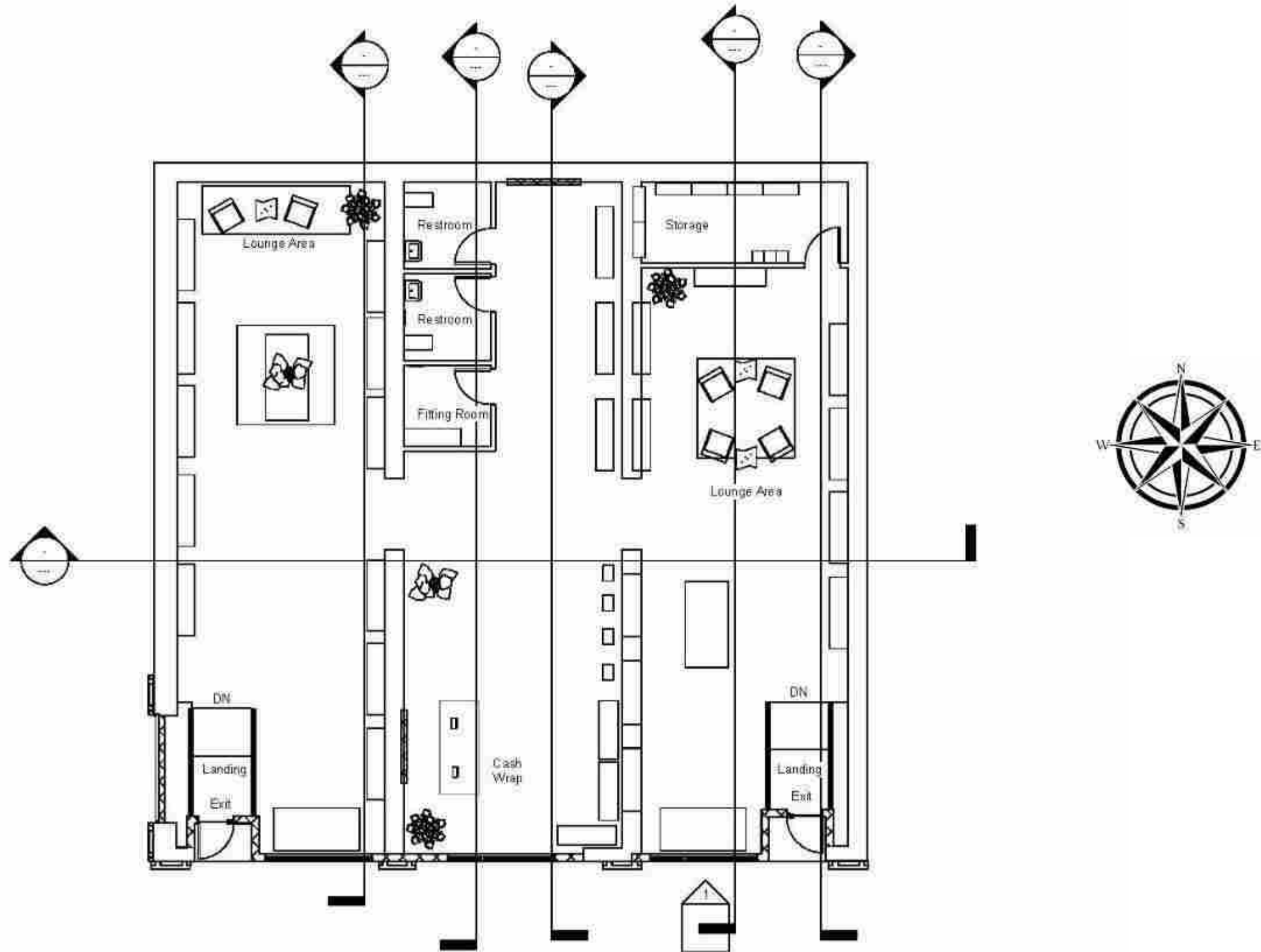


Concept Statement

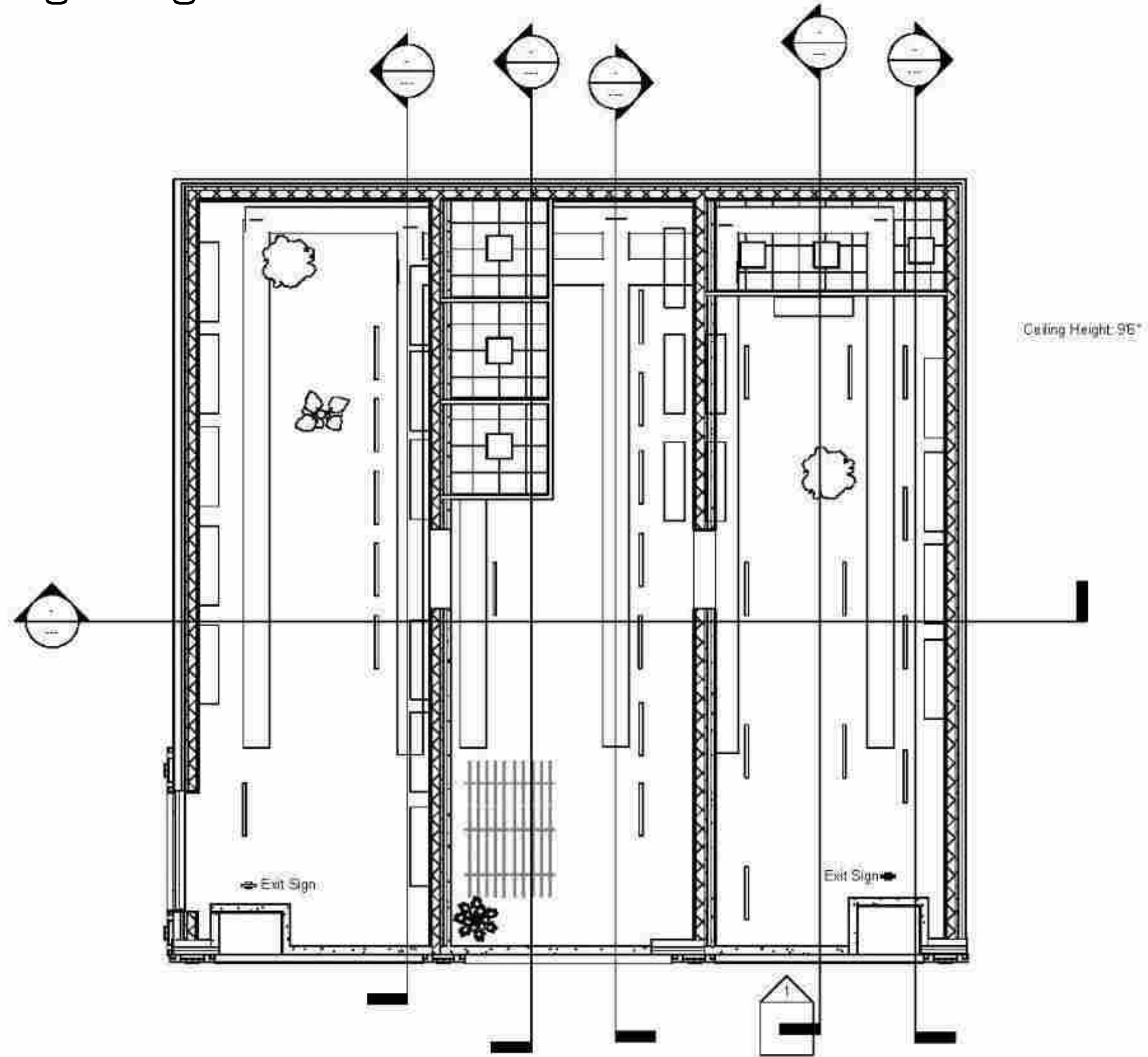
Black & WHITE

Something Greek is a space for Fraternity and Sororities to sell products in a light – contrasting space with the use of black finishes while letting the product be the focus of the space.

Revit Furniture Plan



Revit RCP & Lighting

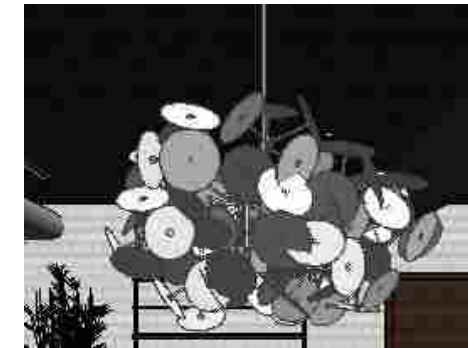
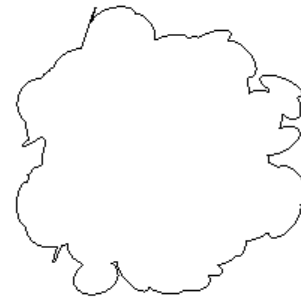


Lighting Symbols & Specs

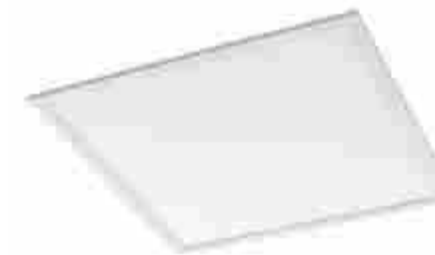
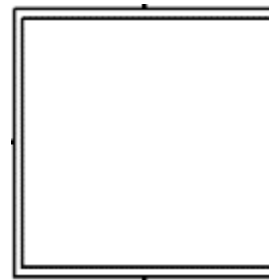
1
White LED Steel
4087 Lumens



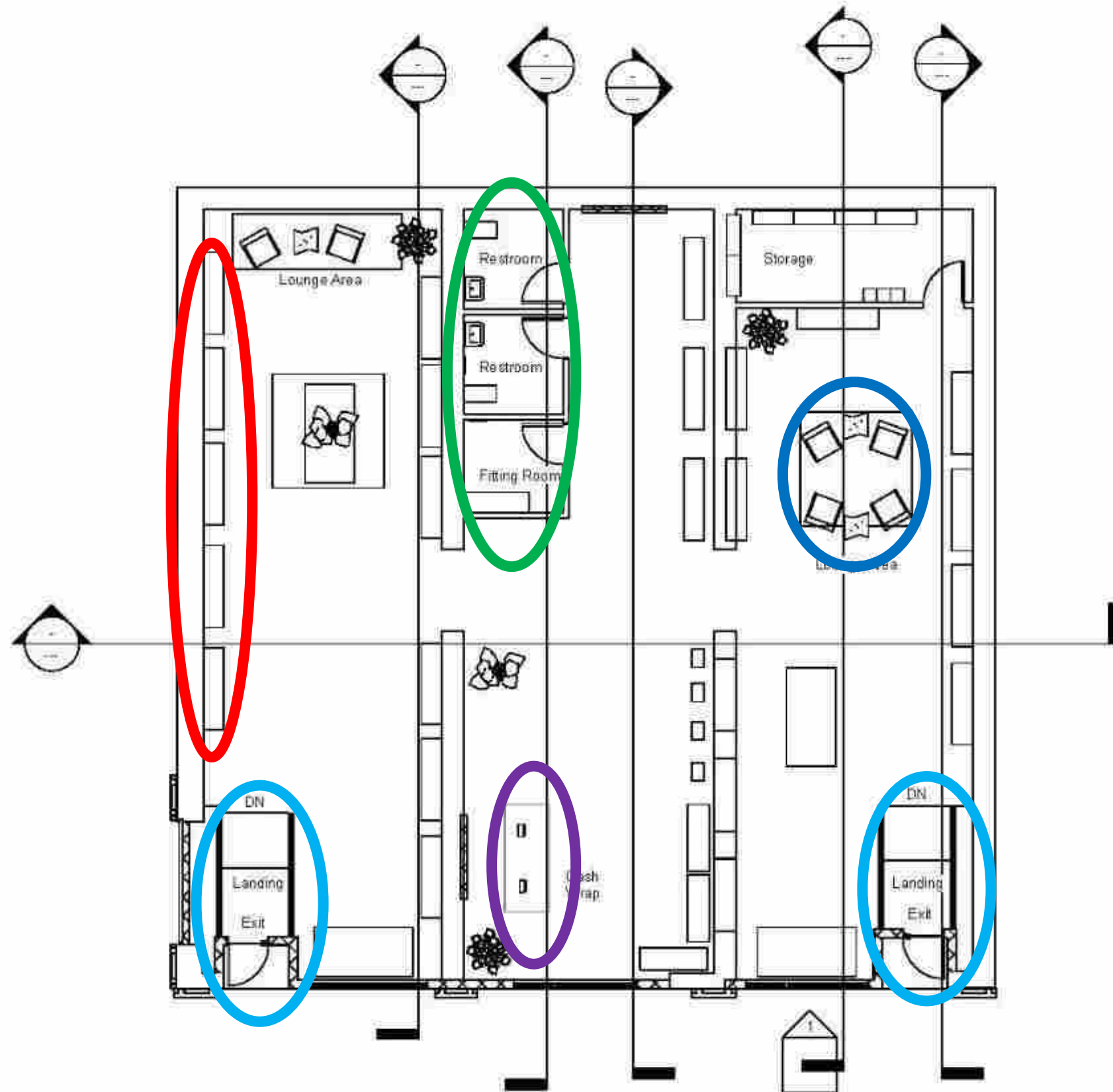
2
Unbleached wool felt leaves
warm-toned large LED
2500 lumens



3
LED Fluorescent
Aluminum
3500 lumens

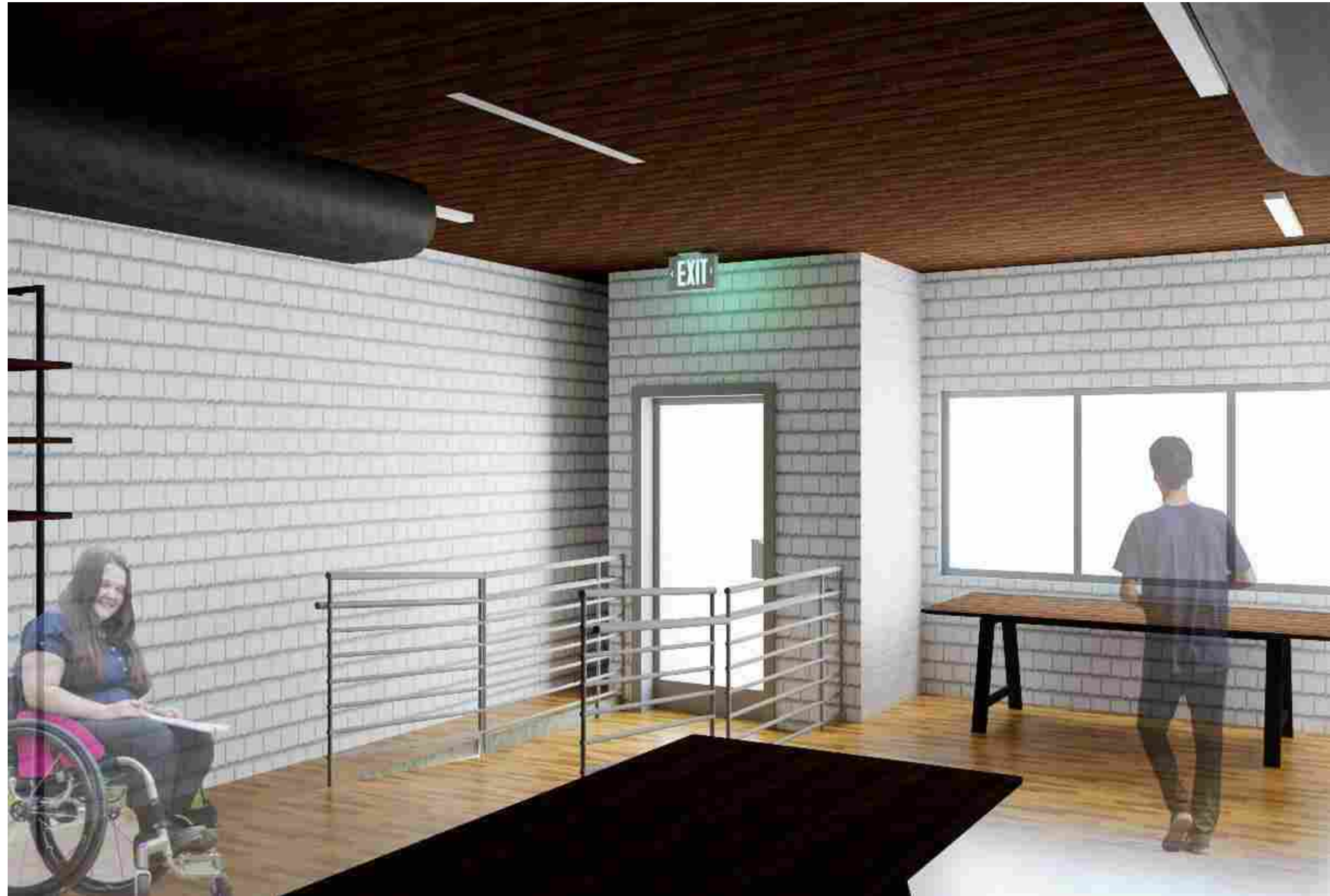


Ergonomics & Anthropometrics

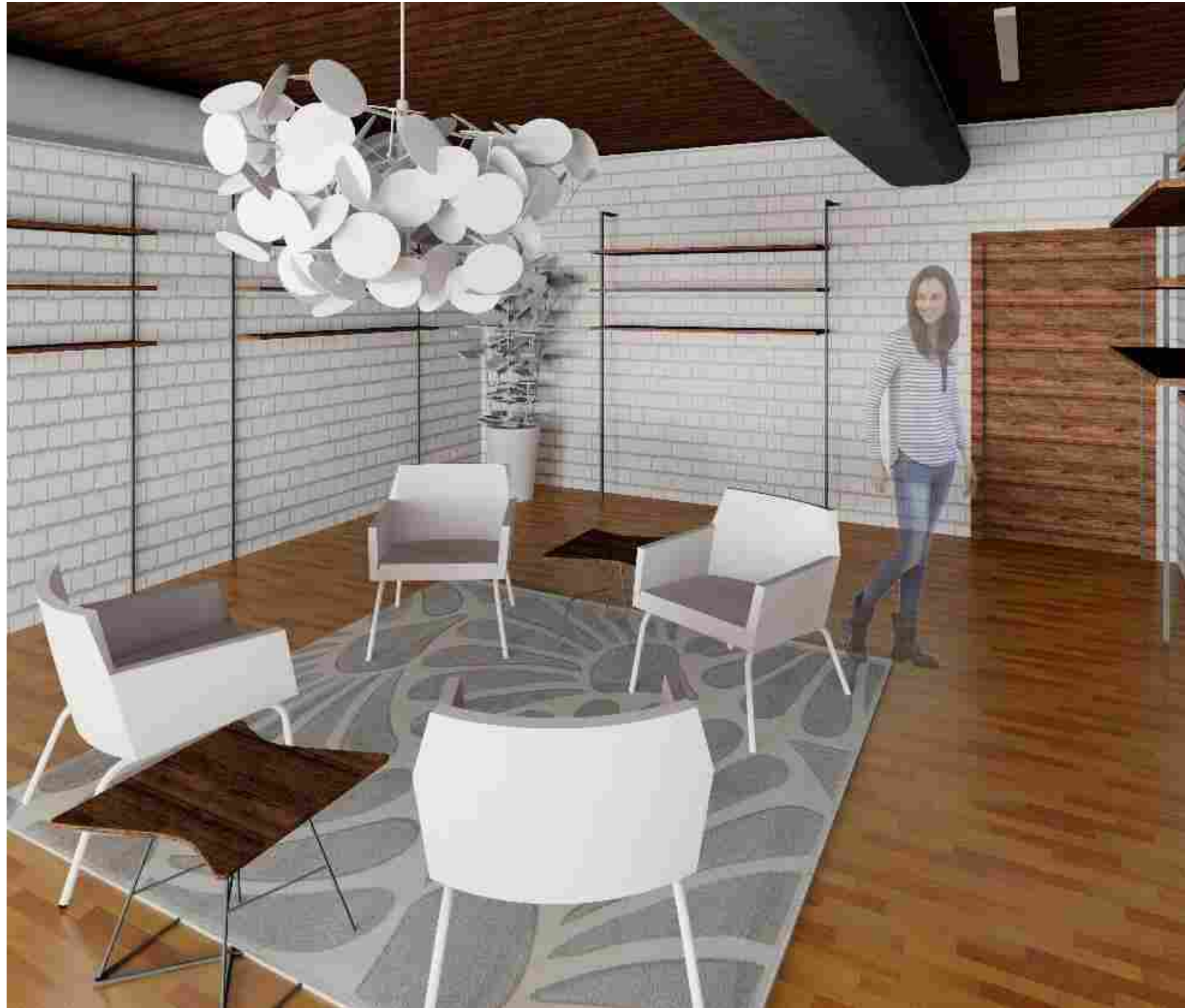


- Seating area (Chairs)
- Restrooms (Toilet, sinks)
- Fitting Room (Bench)
- Display (eye level)
- Cash Wrap (Height)
- Ramps and railings

Walk Through & Rendering 1



Rendering 2



Rendering 3



Rendering 4

