



# PORTFOLIO III

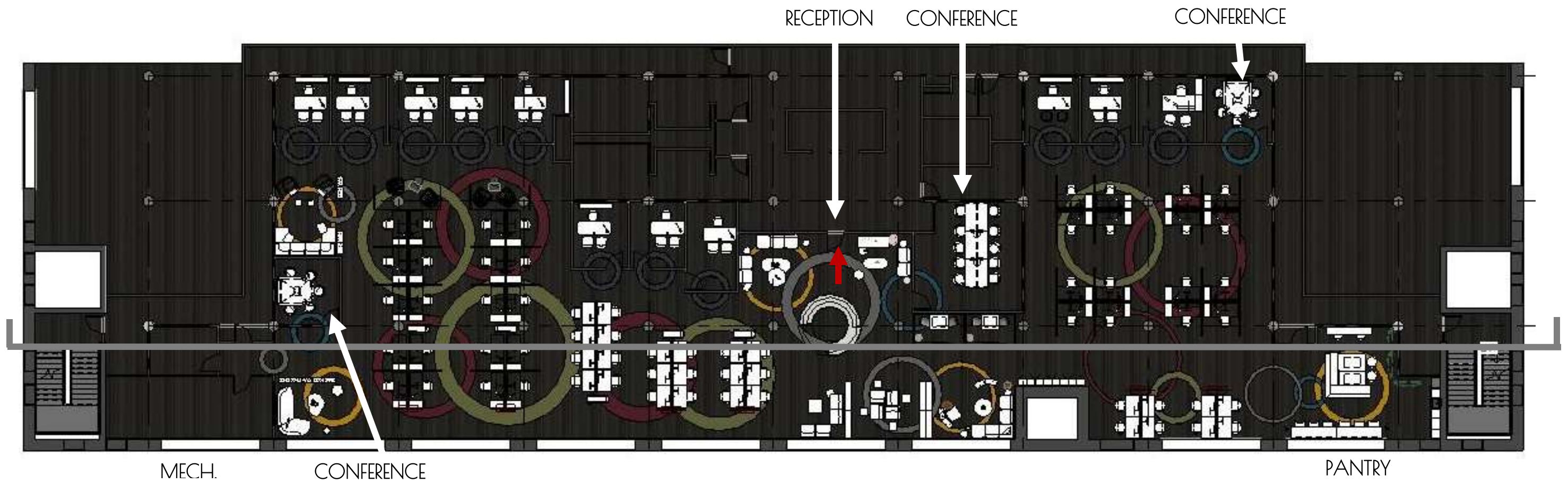
---

FINAL SCHEMATIC

AMBER COUSAR

IDSN 3201

SPRING 2020

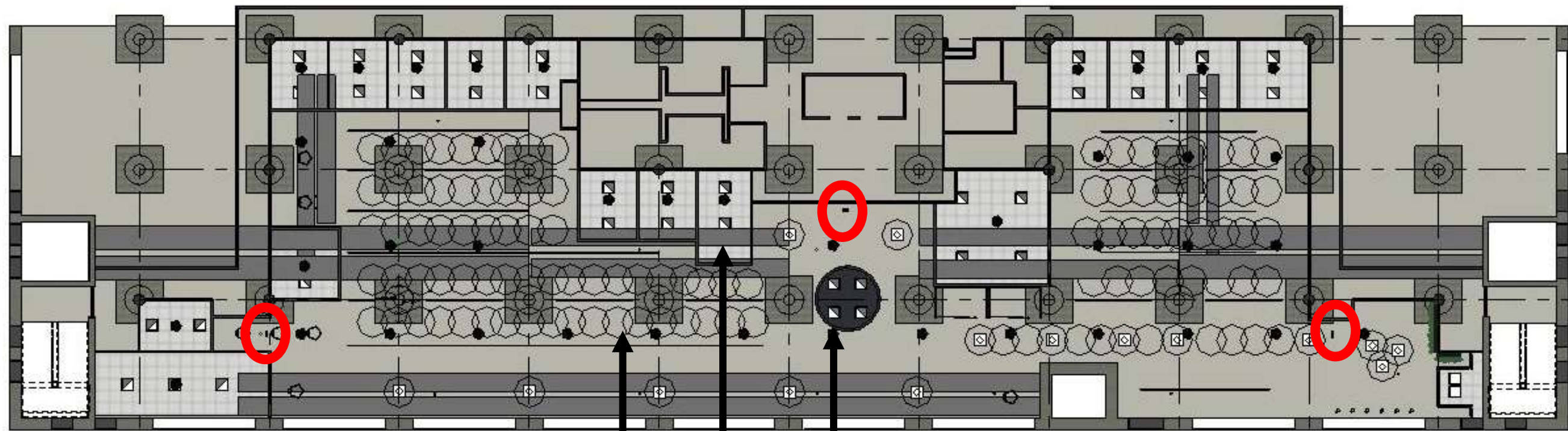


# FURNITURE PLAN

IDSN 3201 - PORTFOLIO III



PLAN NOT TO SCALE



CEILING CLOUDS 8'-10' AFF  
 CEILING HEIGHT 10' AFF TYP  
 SOFFIT 11' AFF

- SPRINKLERS
- ◻ SQUARE RECESSED DOWNLIGHT
- HALO PENDANT
- SUSPENDED LINEAR LED
- EXIT SIGNS



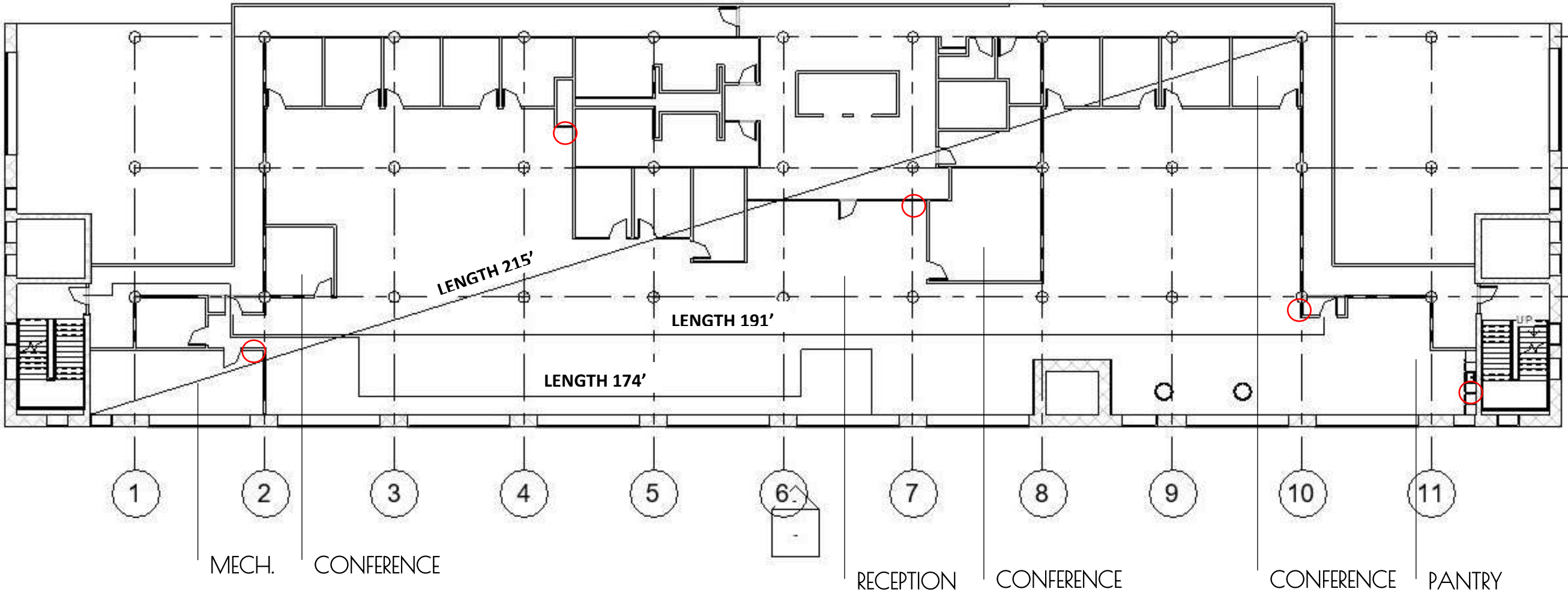
# REFLECTED CEILING PLAN



IDSN 3201 - PORTFOLIO III

PLAN NOT TO SCALE

○ FIRE EXTINGUISHER



# LIFE SAFETY PLAN

IDSN 3201 - PORTFOLIO III



PLAN NOT TO SCALE

Building Construction and Occupancy									
Construction Type	Sprinklers?	Occupancy Type							
Type 1	Yes	B							
Exit Requirements: Number and Arrangement of Exits									
Space Designation	# of Exits		Travel Distance		Arrangement: Means of Egress				
	Required	Shown on Plans	Allowable Distance	Actual Distance Shown on Plans	Req'd Distance Between Exits	Actual Distance Shown on Plans			
Suite 3100	2	3	300'-0"	174'	72'	191'			
Notes:									
Use Group or Space Designation	(A)	(B)	Calculated Occupant Load = A/B	©		Exit Width (Inches)			
	Area = Sq. Ft.	Area per Occupant		Egress per Occupant		Required Width = (A/B)xC		Actual Width	
				Stair	Level	Stair	Level	Stair	Level
Suite 3100	10,087	100	100	.3"	.2"	30"	20"	56"	60"
Notes:									

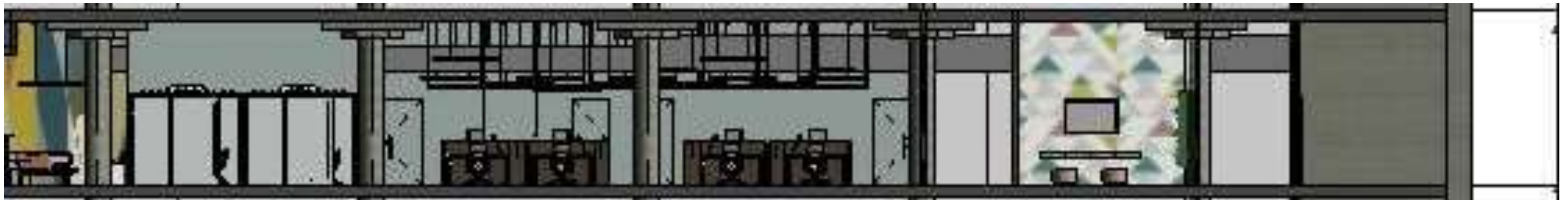
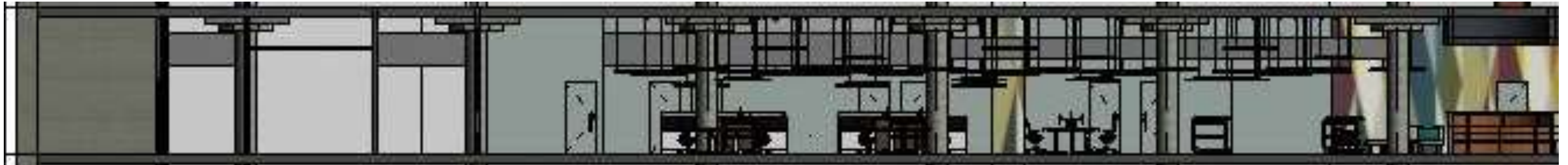


# LIFE SAFETY PLAN

IDSN 3201 - PORTFOLIO III



PLAN NOT TO SCALE



# E-W SECTION

IDSN 3201 - PORTFOLIO III

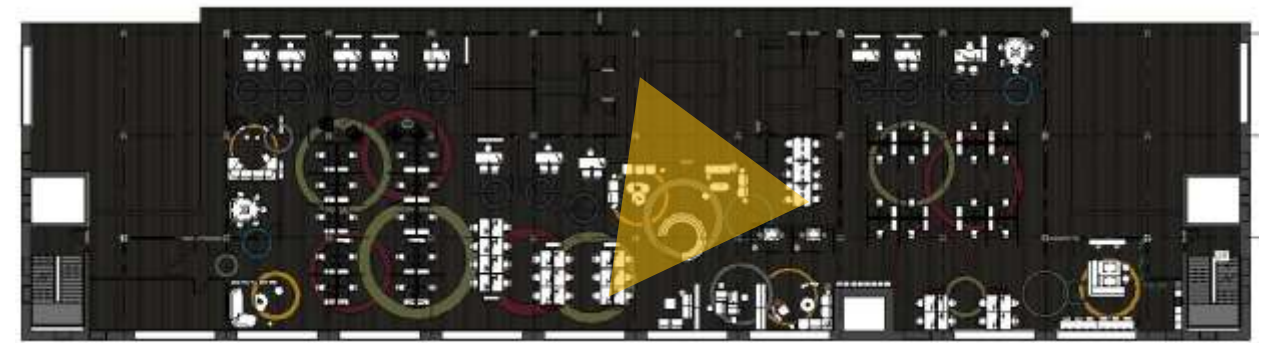


PLAN NOT TO SCALE



# PERSPECTIVES - ENTRY

IDSN 3201 - PORTFOLIO III





# FURNITURE & FINISHES - ENTRY

IDSN 3201 - PORTFOLIO III

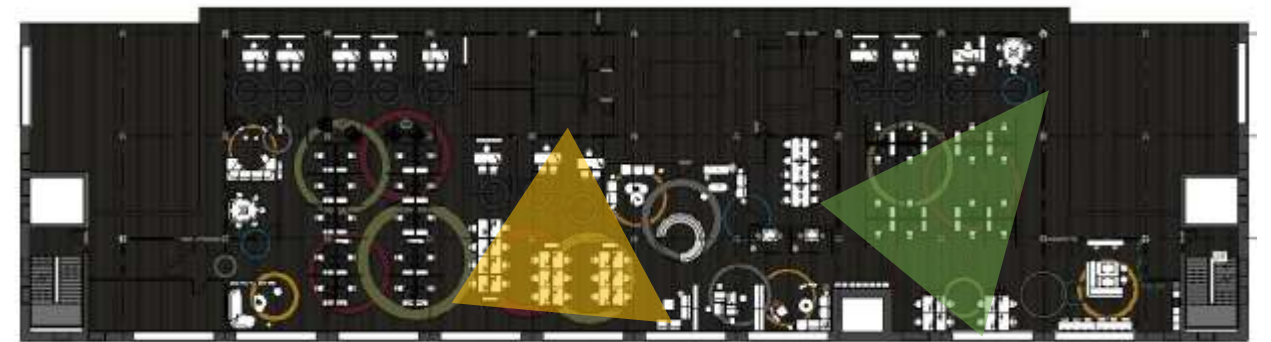
---





# PERSPECTIVES – OPEN WORK

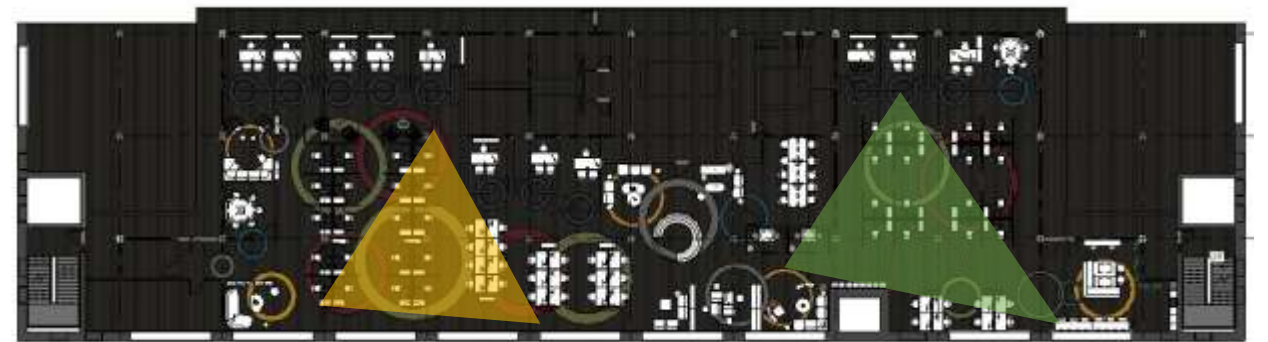
IDSN 3201 – PORTFOLIO III





# PERSPECTIVES – OPEN WORK

IDSN 3201 – PORTFOLIO III





# FURNITURE & FINISHES – OPEN WORK

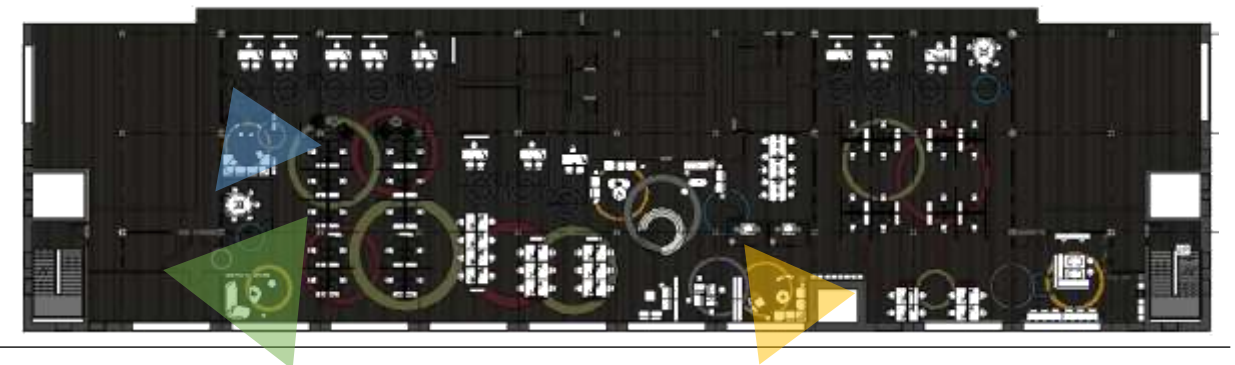
---

IDSN 3201 – PORTFOLIO III



# PERSPECTIVES – LOUNGE

IDSN 3201 – PORTFOLIO III





# FURNITURE & FINISHES - LOUNGE

IDSN 3201 - PORTFOLIO III



# PERSPECTIVES - OTHER

IDSN 3201 - PORTFOLIO III

## **Blue:** Mind

Blue stimulates the mind, leading to more productivity. The hues of the blue color palette are ideal for staying focused in repetitive industries.

## **Red:** Body

Red evokes a sense of urgency, so for physical jobs like construction, red will stimulate their energy levels.

## **Gray:** Psyche

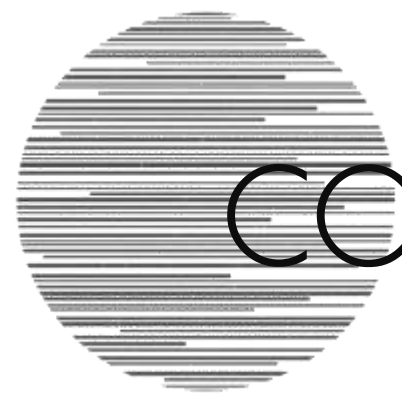
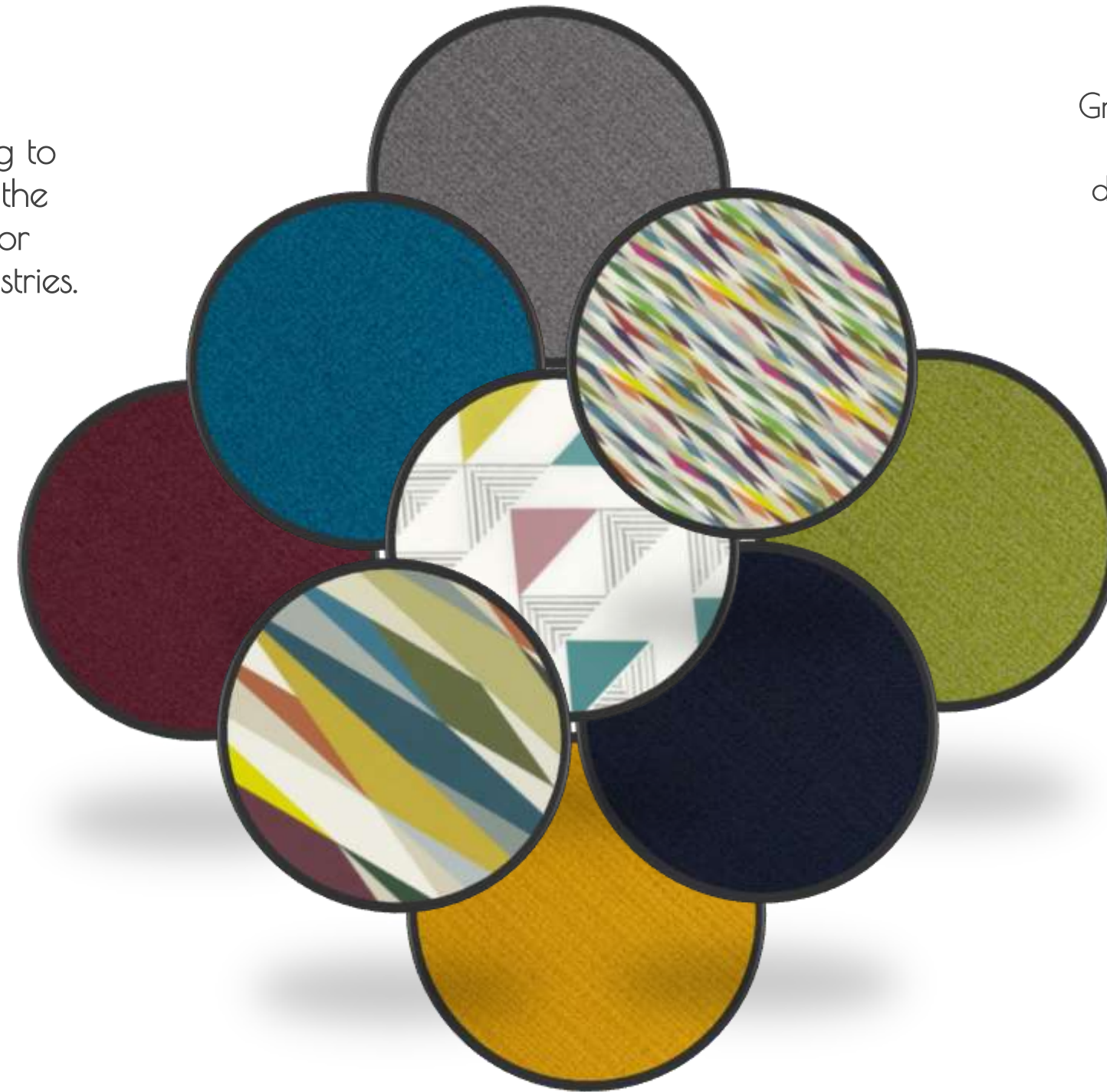
Gray falls between black and white which gives off a neutral mood. There are different hues and shades of gray which evoke different psyches.

## **Green:** Balance

Green is all about balance, calmness, and reassurance.

## **Yellow:** Emotion

Yellow stimulates emotion, which makes it an ideal color for creative industries. It also evokes feelings of happiness and can brighten spirits.



# COLOR RATIONALE

IDSN 3201 - PORTFOLIO III



### Writing Surface Height Range:

- 22.6"-48.7"

### Height Adjustable Desks:

- Make it easy to change worksurface height and posture.
- Standing desks support movement, as people shift postures from standing to sitting and back again.
- Soft edge profiles help to significantly reduce unhealthy pressure on forearms and reduce feelings of shoulder and neck fatigue.
- Touch controller reminds workers to change posture with Active Motion, subtle desk movements that remind users to maintain posture.

### Seating:

- Office chairs change shape and mimic the natural motion of the spine contouring to the user, creating the deepest recline.
- Adaptive bolstering allows seats to contour to the size of any user providing customized comfort.
- Headrest range of motion:
  - 5-inch range of height adjustment
  - 4 inches of forward and backward pivot movement
  - 90° of rotation



# ANTHROPOMETRICS & ERGONOMICS

IDSN 3201 - PORTFOLIO III



## Having different spaces to accommodate:

- Privacy
- Group Work
- Different Work Styles

## Designing for Disabilities:

- Wheelchair Users

## Designing to motivate productivity and wellbeing of employees:

- Colors pull from African flags to symbolize African American heritage.
- Circles used throughout design to symbolize the Church Hill Tunnel, a piece of Virginia's history.



# USER CHALLENGES

IDSN 3201 - PORTFOLIO III