

POR

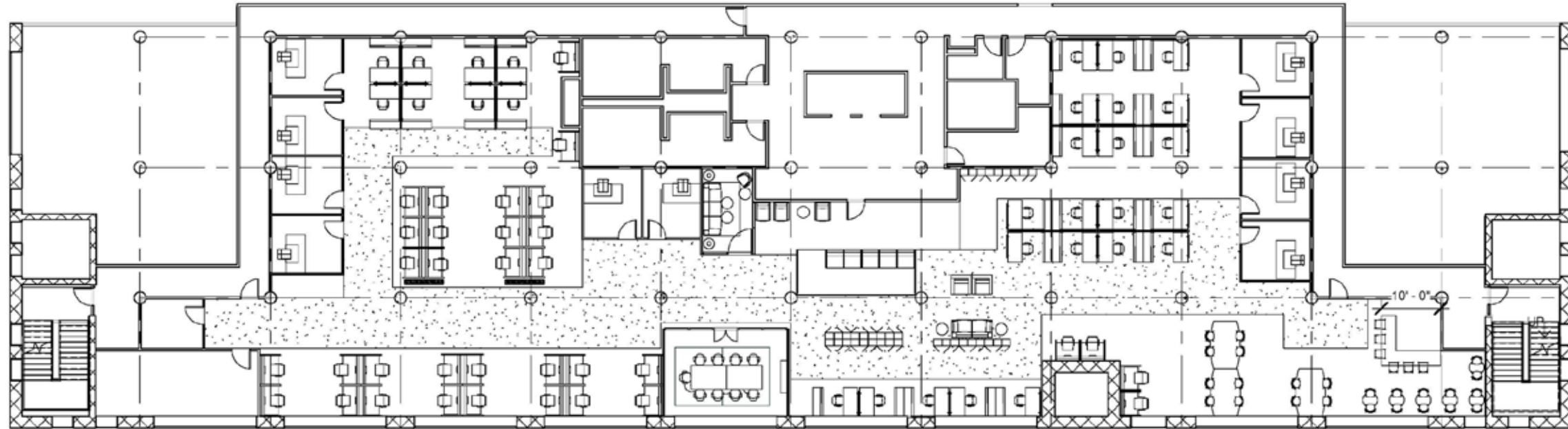
TFO

LIO

003

MARY ANN MALPAYA | CHARLES GUSTINA | I D S N 3 2 0 2

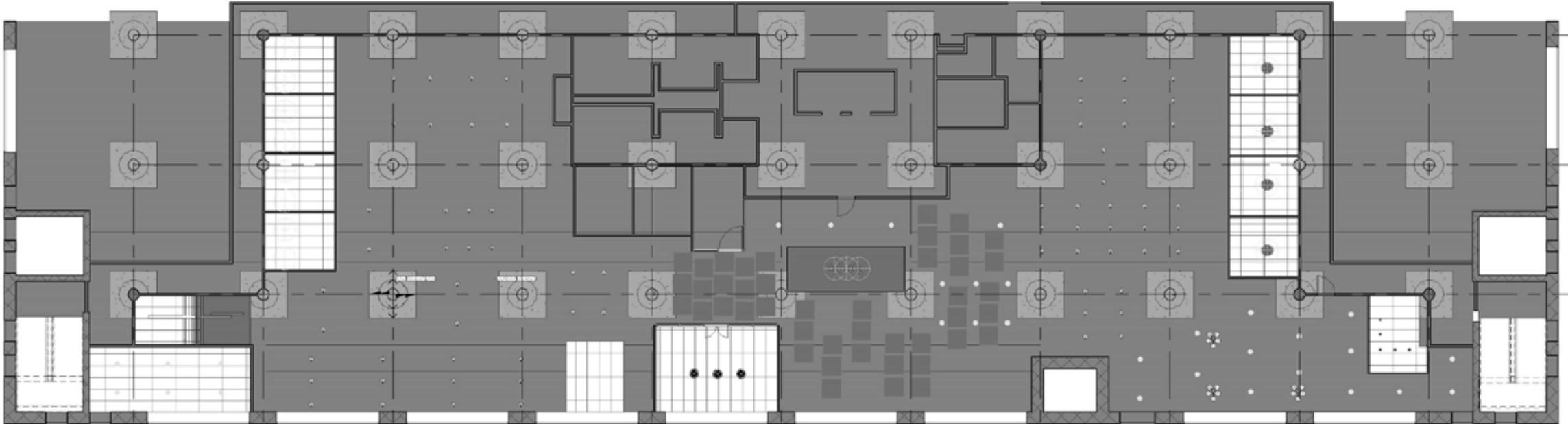
SCALE: 1/16" = 1'



FURNITURE PLAN

INCLUDE: ENTRY, OPEN WORK AREA,
WORKSTATIONS, OFFICES, CAFE, & STORAGE

SCALE: 1/16" = 1'



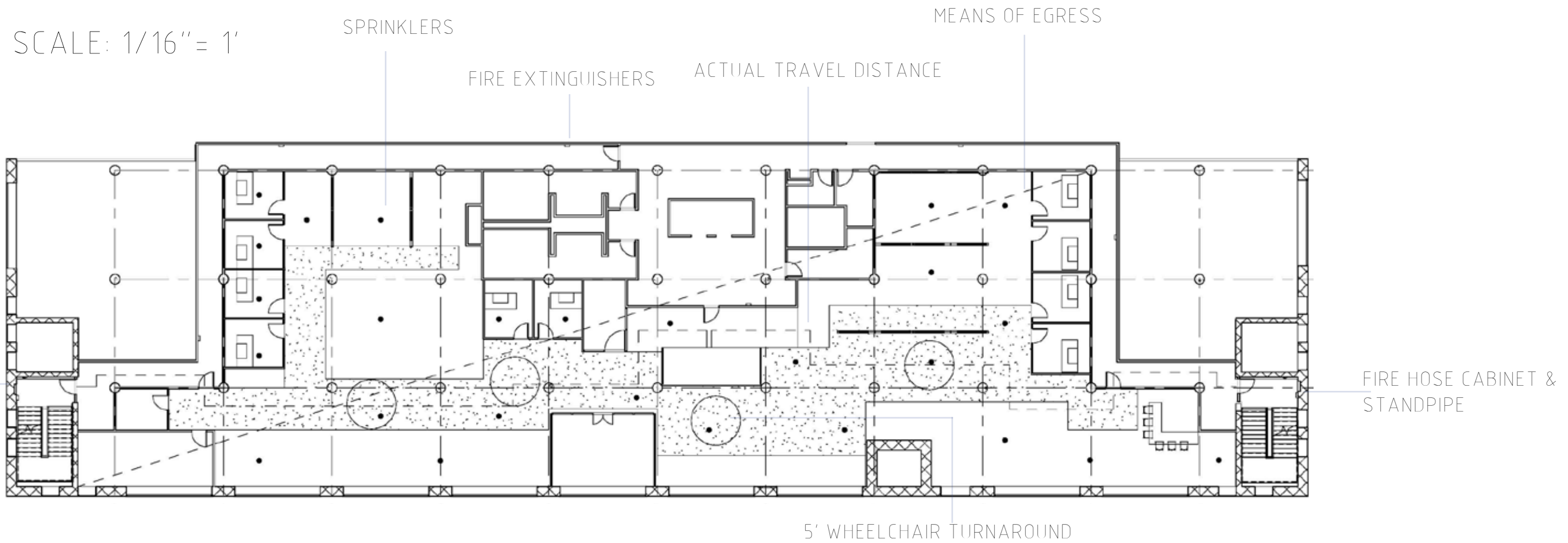
REFLE

CTED

CEILING

PLAN

INCLUDE: LIGHTING, TILED CEILING & WOOD BAFFLES

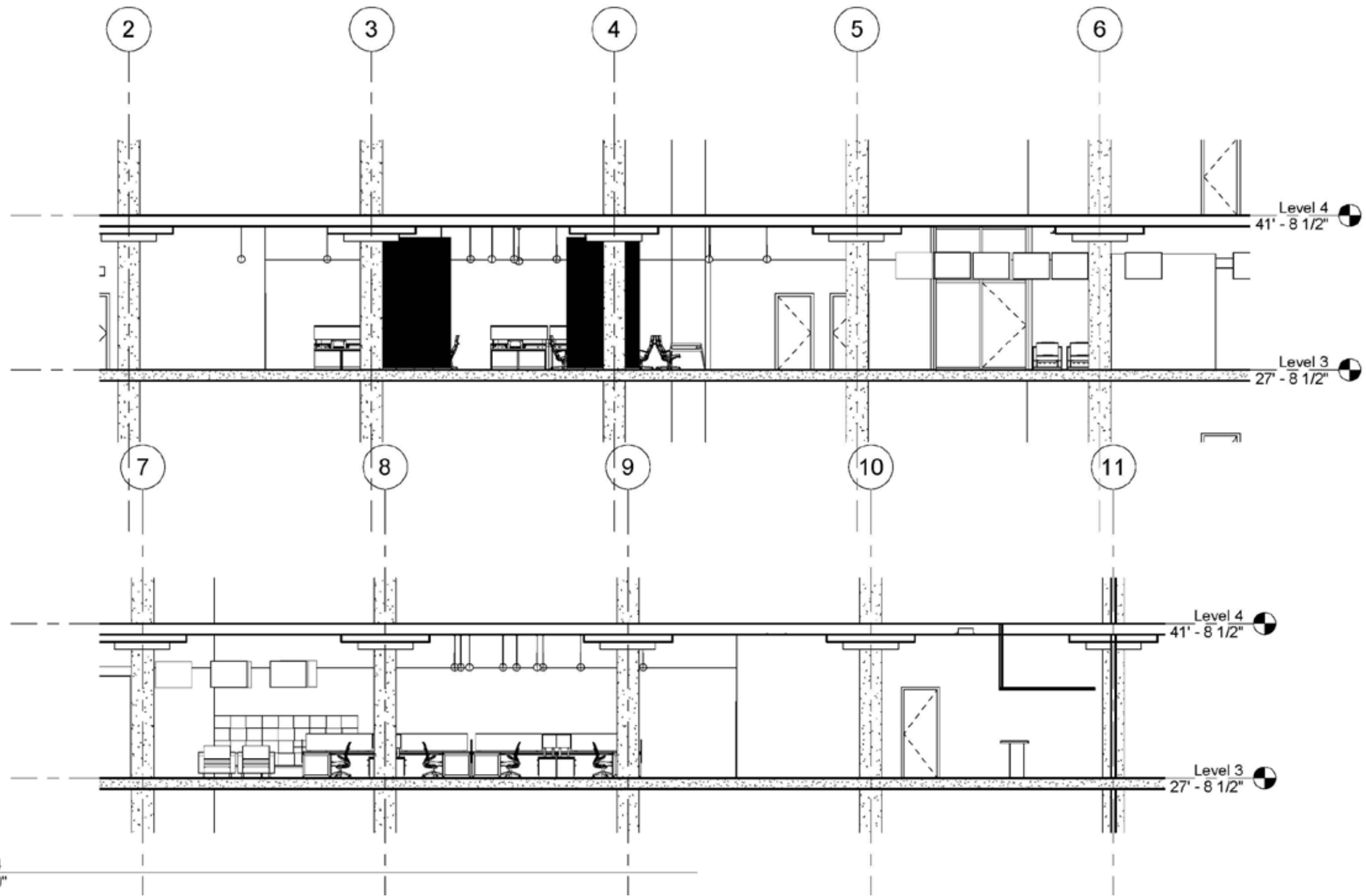


LIFE SAFETY PLAN

ADA COMPLIANCE, LOCATIONS OF FIRE EXTINGUISHERS, SPRINKLERS, FIREHOSE STANDPIPES

Building Construction and Occupancy									
Construction Type	Sprinklers?	Occupancy Type							
Concrete	Yes	Type B- Business							
Exit Requirements: Number and Arrangement of Exits									
Space Designation	# of Exits		Travel Distance		Arrangement: Means of Egress				
	Required	Shown on Plans	Allowable Distance	Actual Distance Shown on Plans	Req'd Distance Between Exits	Actual Distance Shown on Plans			
Suite 3100	2	3	300'00"	214'	71'	153'			
Notes:									
Use Group or Space Designation	(A)	(B)	Calculated Occupant Load = A/B	©		Exit Width (Inches)			
	Area = Sq. Ft.	Area per Occupant		Egress per Occupant		Required Width = (A/B)xC		Actual Width	
				Stair	Level	Stair	Level	Stair	Level
Suite 3100	10,087	100 SF	100	0.3	0.2	30"	20"	56"	121"
Notes:									

LIFE SAFETY PLAN TABLE



① Section 24
1/8" = 1'-0"

E-W SECTION CUT

OFFICE VIEW FROM EAST TO WEST



RENDERED PERSPECTIVES

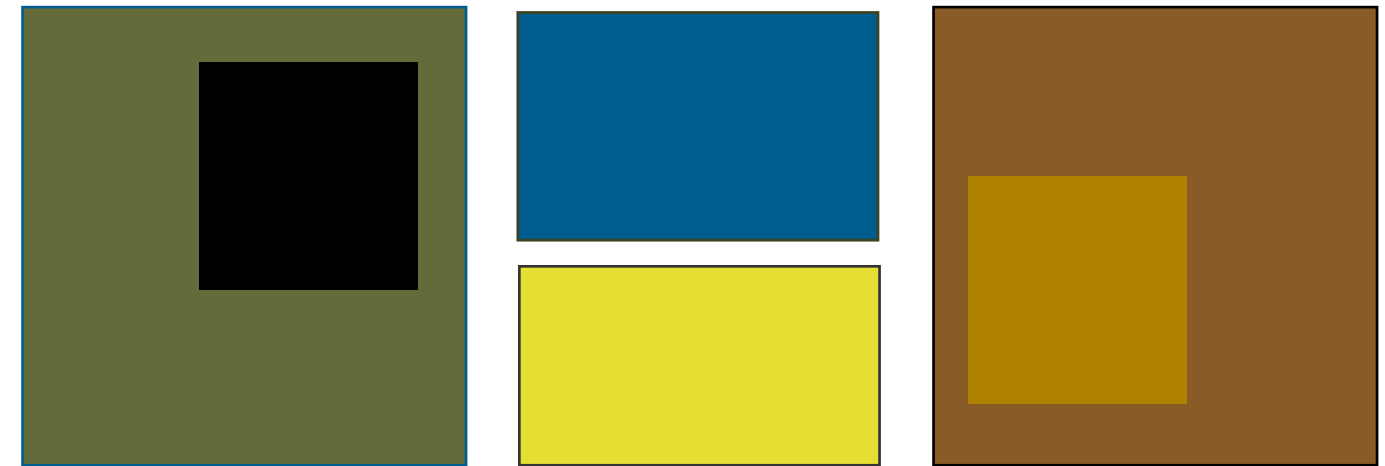
ENTRY | RECEPTION VIEW



OPEN WORK AREA VIEW



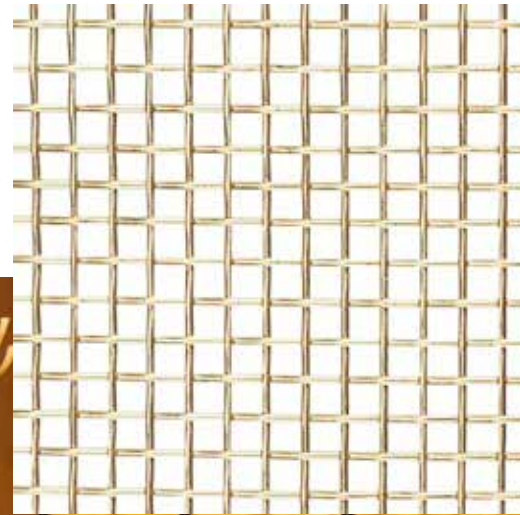
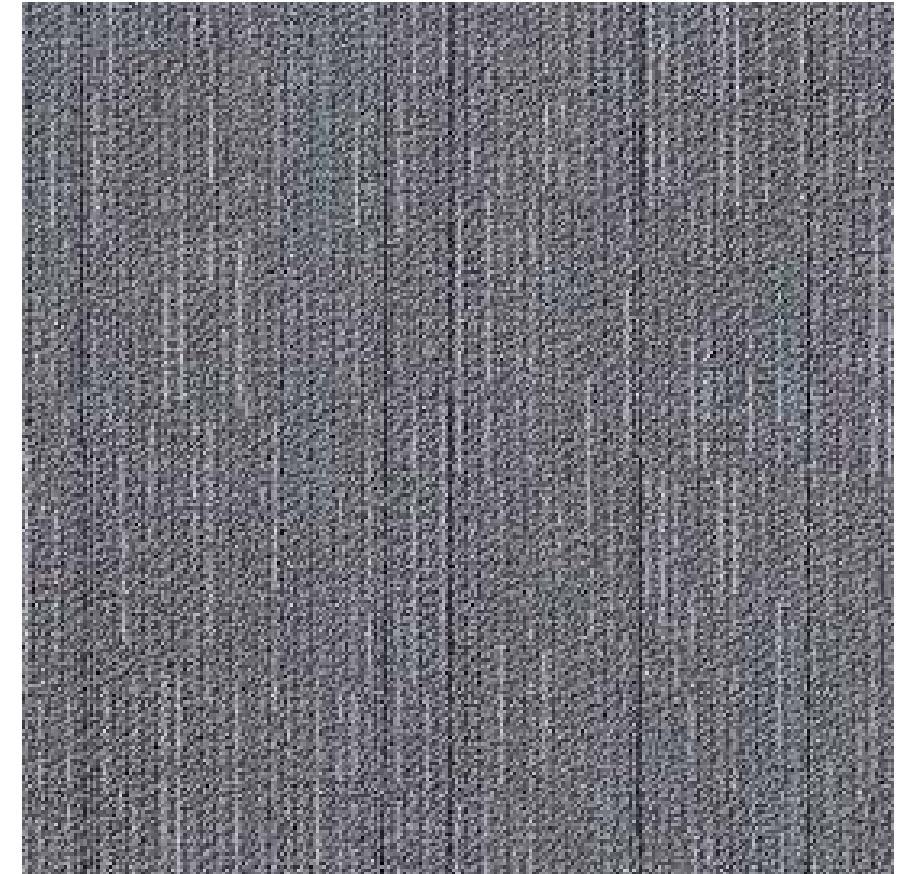
LOUNGE AREA VIEW



+ Inspired by the history of tobacco row in Richmond, VA
+ Color schemes of gold, brass, forest greens, yellows, and teals are used to represent the industrialization of Richmond during the Civil War between 1861-1865

COL OR RATI ONALE

BUBBLE DIAGRAMS



FURNITURE & FINISHES

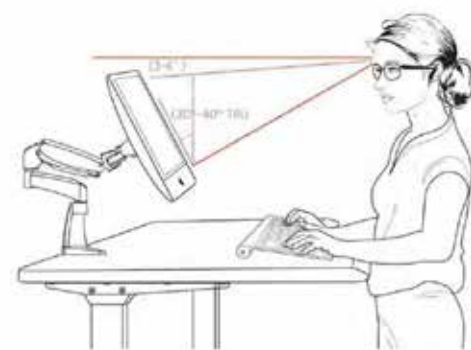
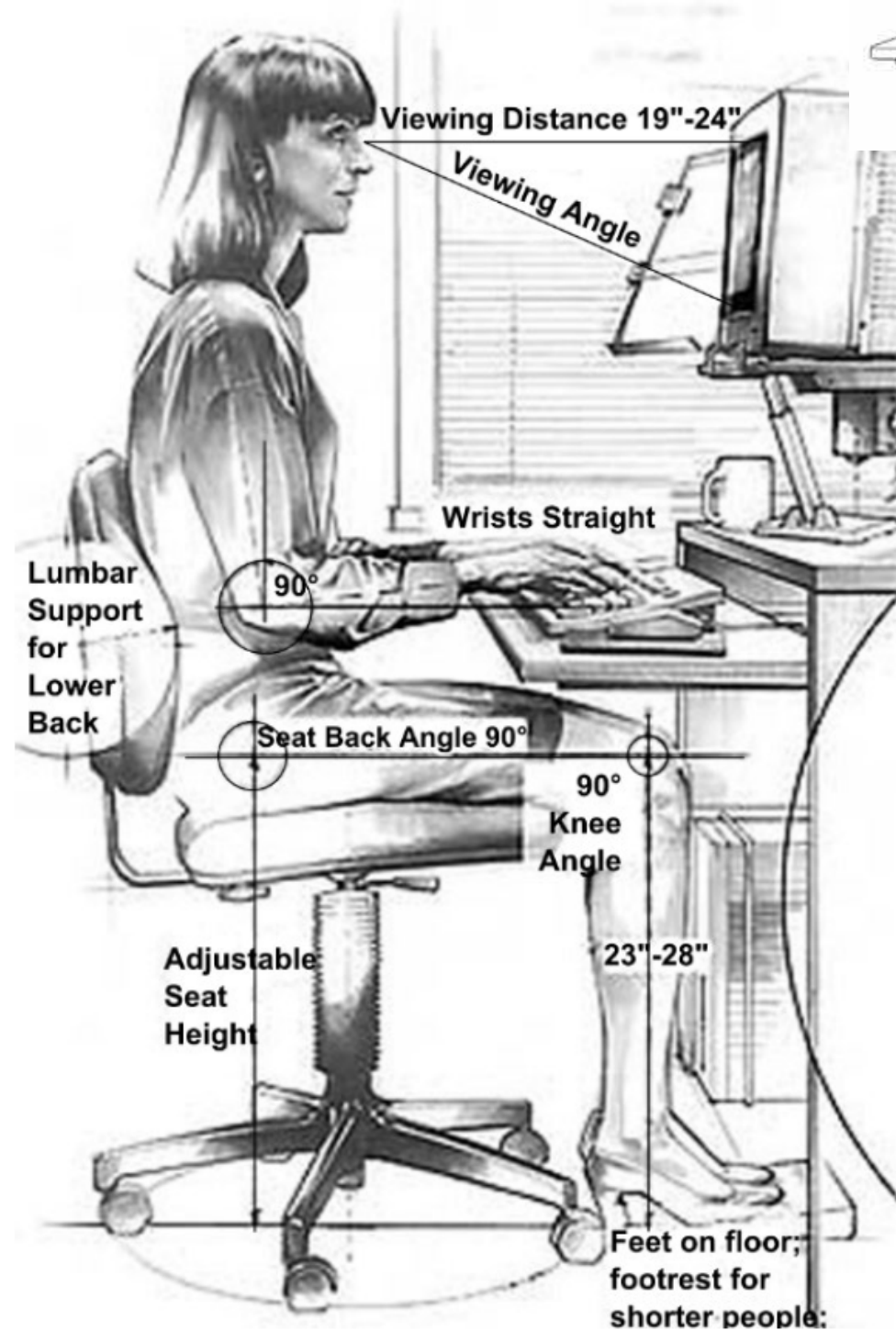
FOR ENTRY



FOR OPEN WORK AREA



FOR LOUNGING AREAS



- + In designing for office spaces, different heights and sizes of users are considered to enhanced the use of desks, chairs, etc.
- + These considerations include: sitting height, sitting eye height, knee-to-back distance, knee height, and popliteal height, which is the distance from the bottom of the heel to the back of the knee
- + To cater to the broad clientele, adjustable desks, tables, and office chairs are used throughout the space
- + The seating enhanced posture and overall comfort
- + Desks can go up to 44 -46 , for users who like to stand while working

ANTHROPOMETRIC AND ERGONOMIC FEATURES

- + According to Medium.com, “culture affects our behavior”
- + With such a wide variety of different cultures working in an office space today, cross-cultural challenges are inevitable
- + Differences can include: dress code, religious background, festivities, non-verbal or verbal behavior, ages, and personality types.
- + Discrimination can happen as a result of these differences, along with misunderstandings and clear and effective communications
- + The opposite could be true where the work environment is celebrated and embraced by its individual differences



USER CHALLENGES CROSS-CULTURALLY