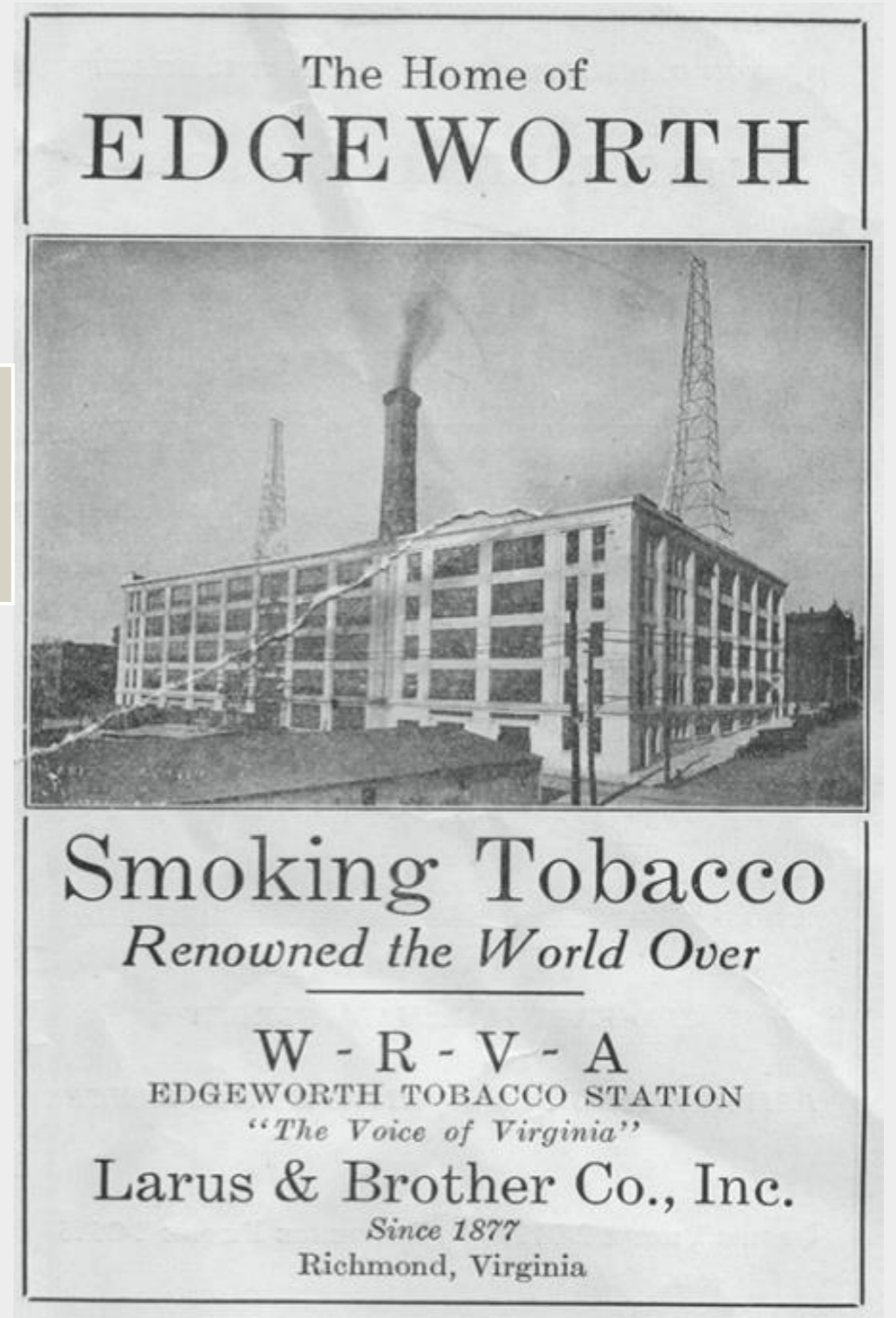


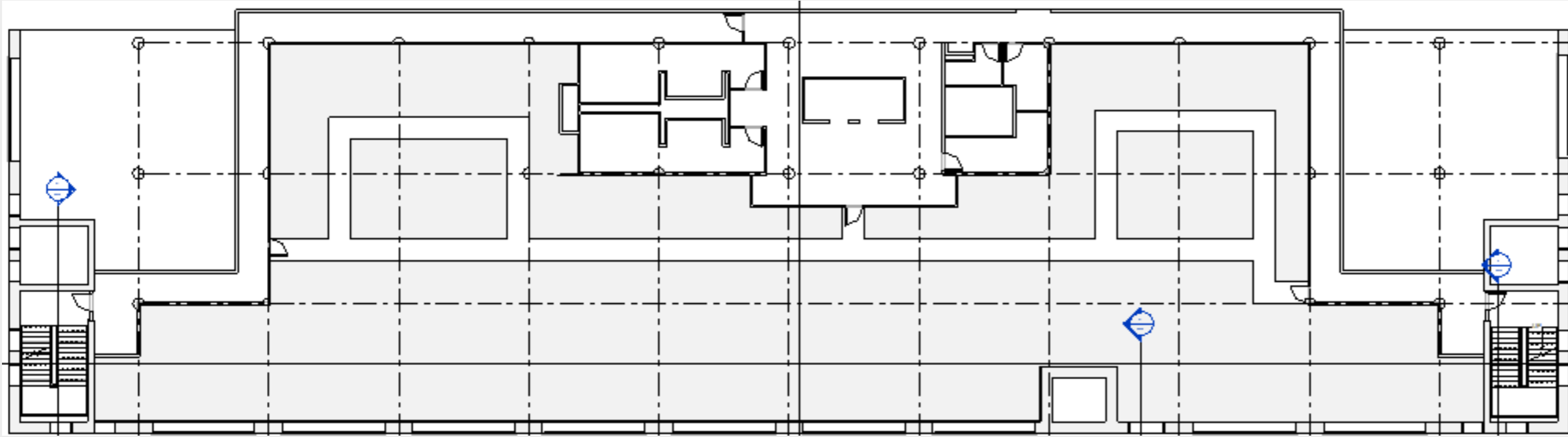
PRELIMINARY SCHEMATICS



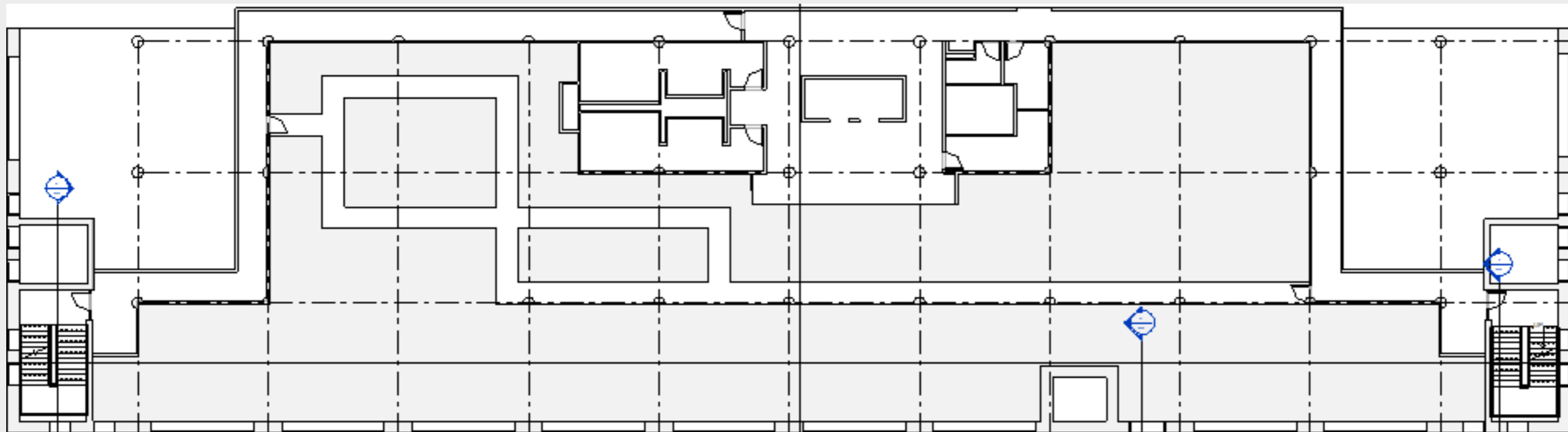
OWSLEY, CARA MARIE
3202 INTERIOR DESIGN STUDIO IV
SPRING 2020
PORTFOLIO 2 - EDGEWORTH BUILDING

CIRCULATION PLANS

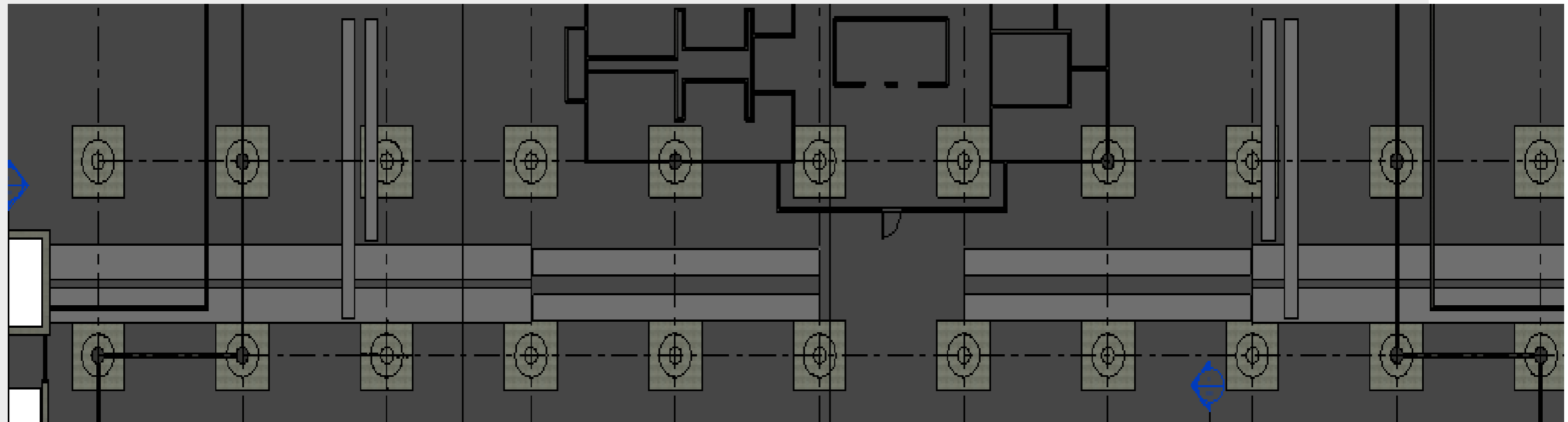
OPTION 1



OPTION 2

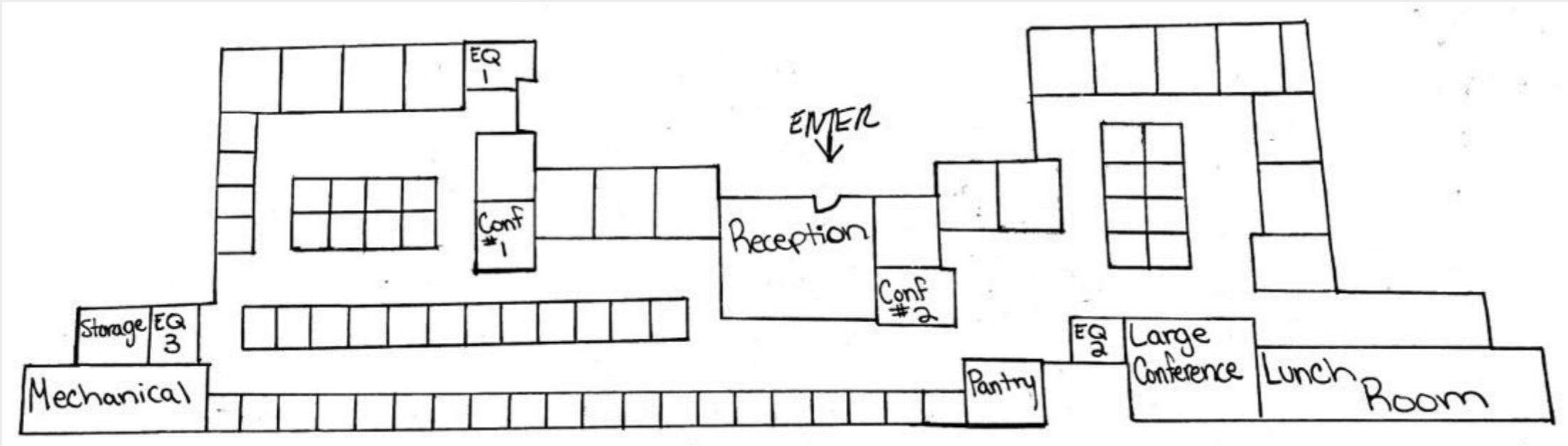


SYSTEMS RCP LOCATION

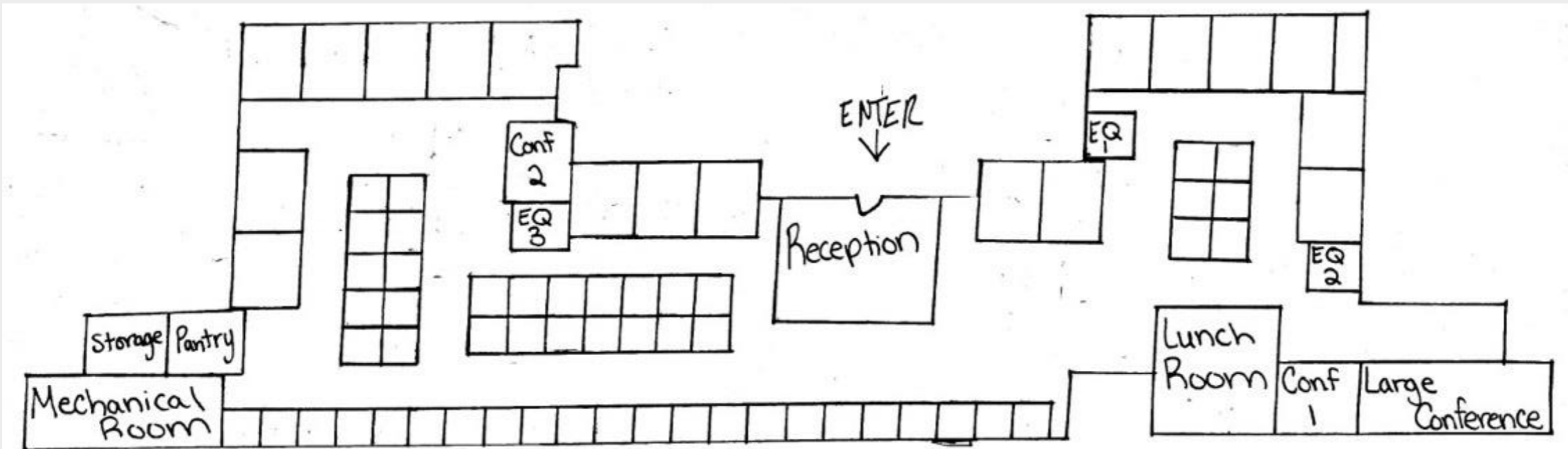


SPACE PLAN SKETCHES

OPTION 1

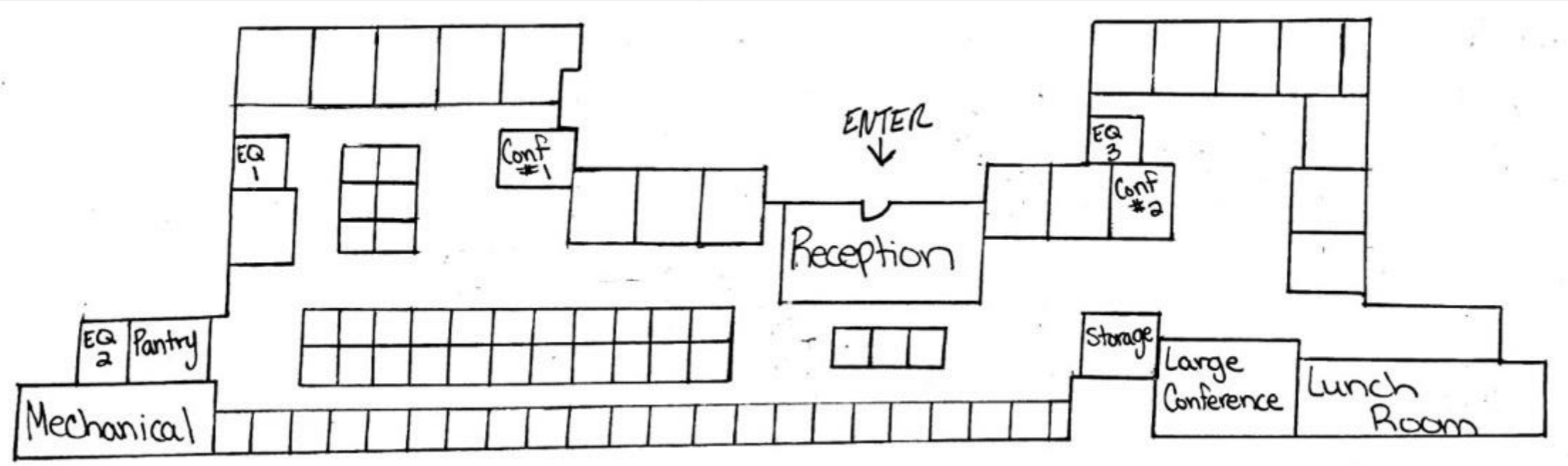


OPTION 2

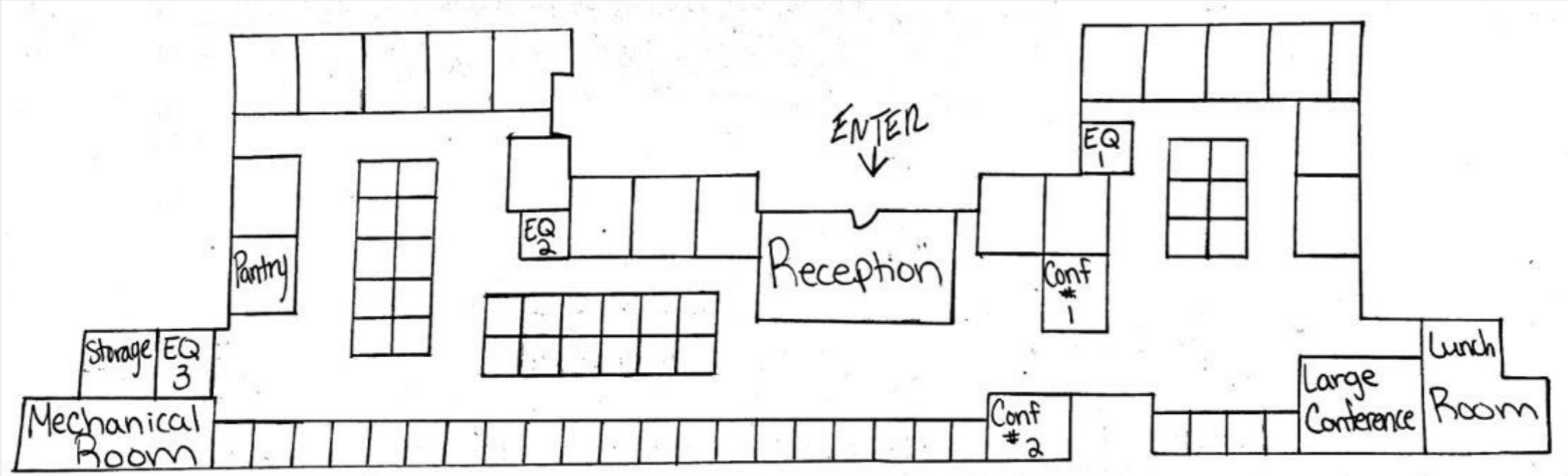


SPACE PLAN SKETCHES

OPTION 3

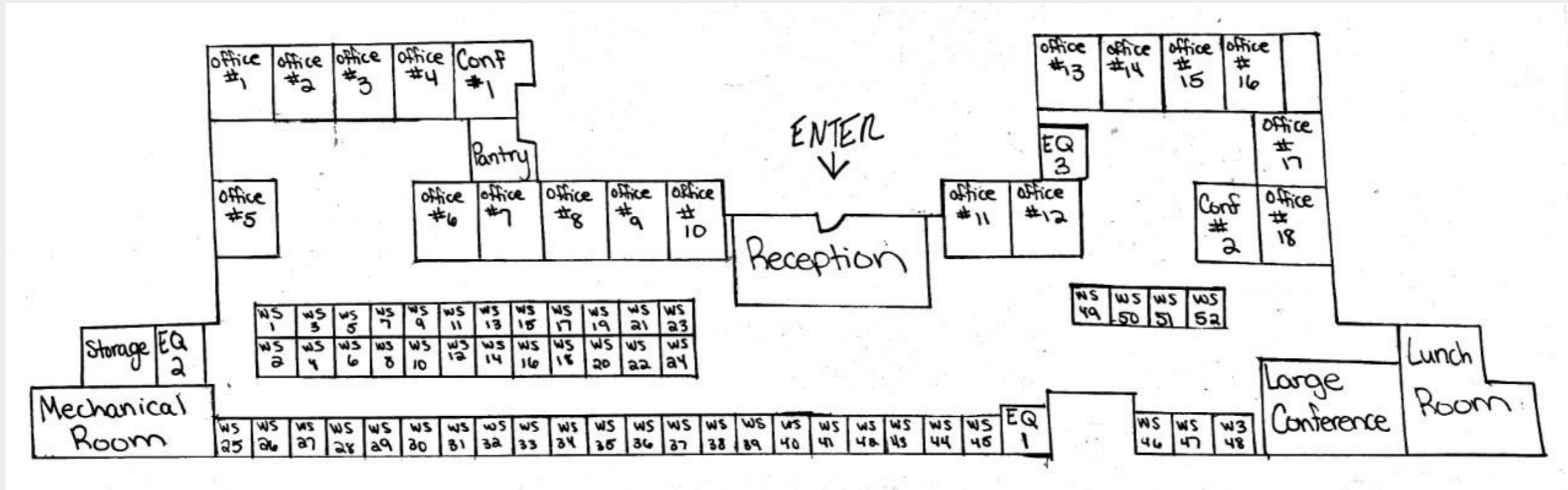


OPTION 4



SPACE PLAN SKETCHES

OPTION 5

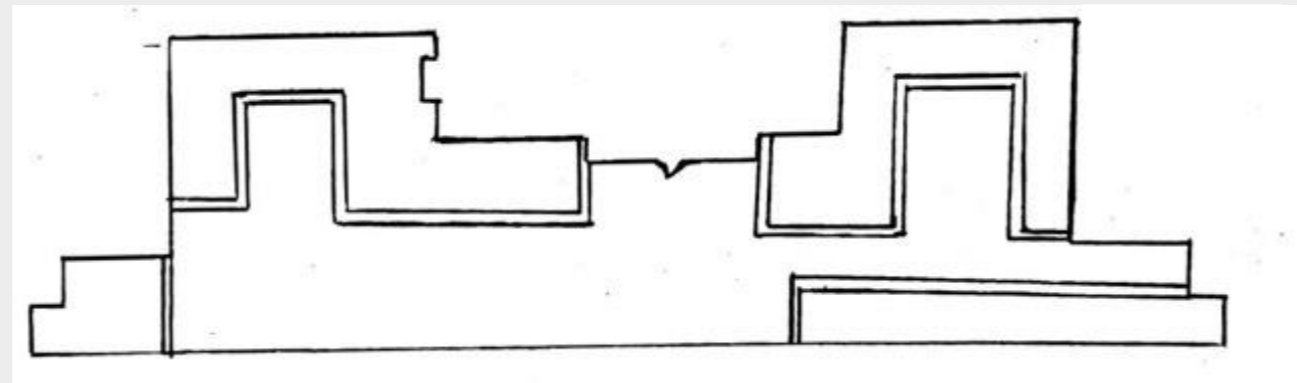
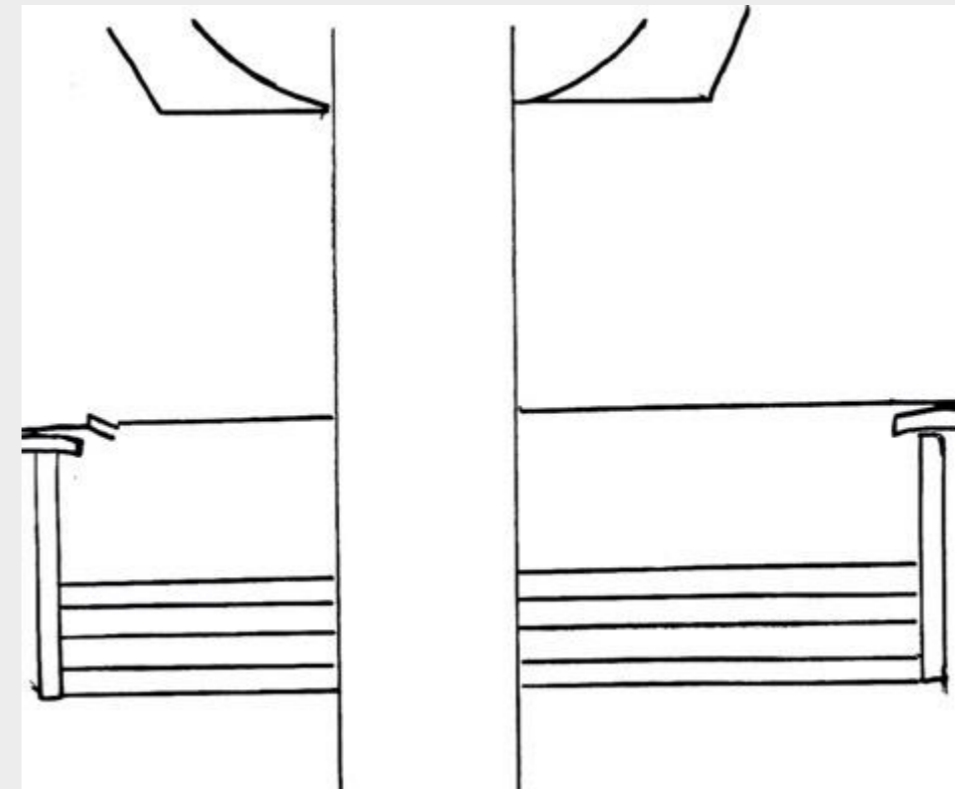
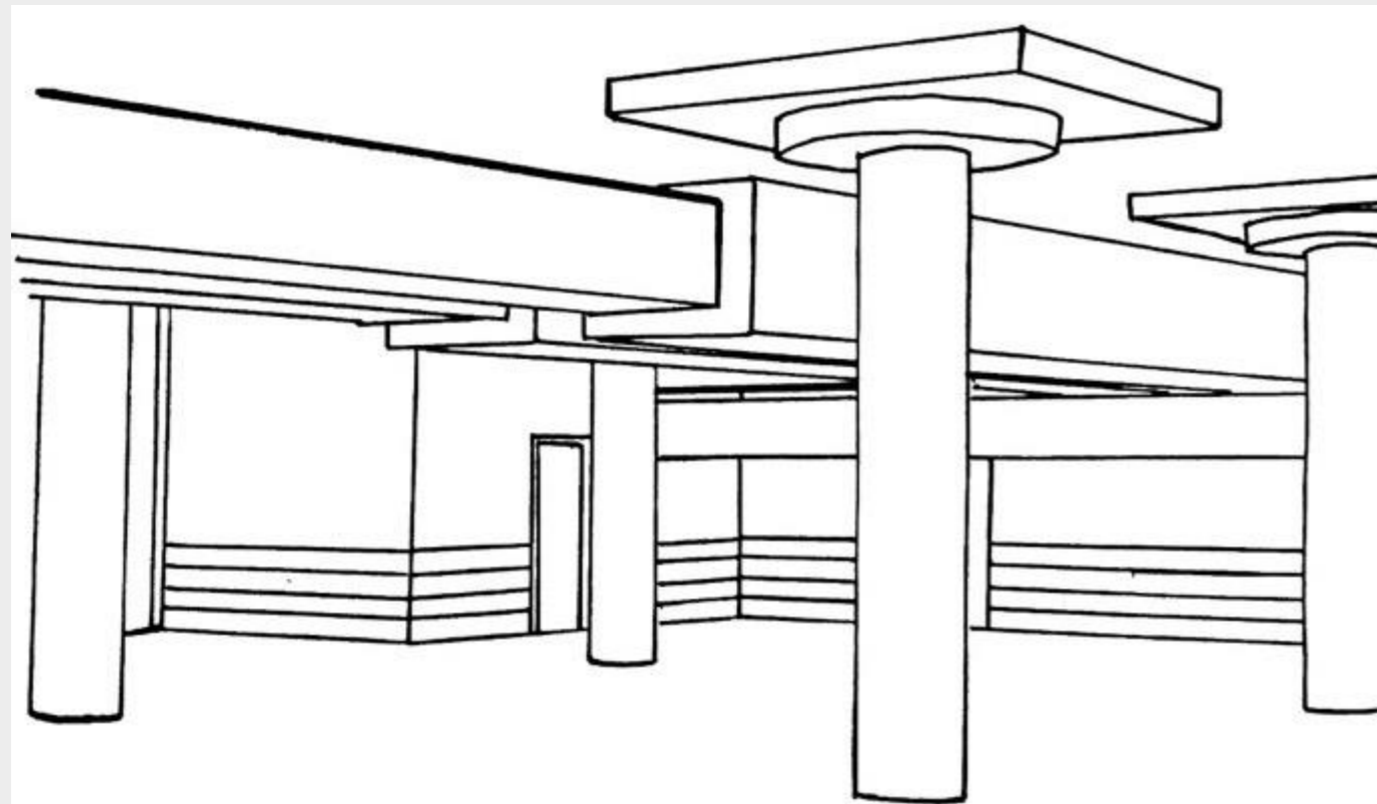


PROBLEM RESOLUTION SKETCHES

WAYFINDING

OPTION 1

❖ INTERIOR WALL PANELING
THROUGHOUT

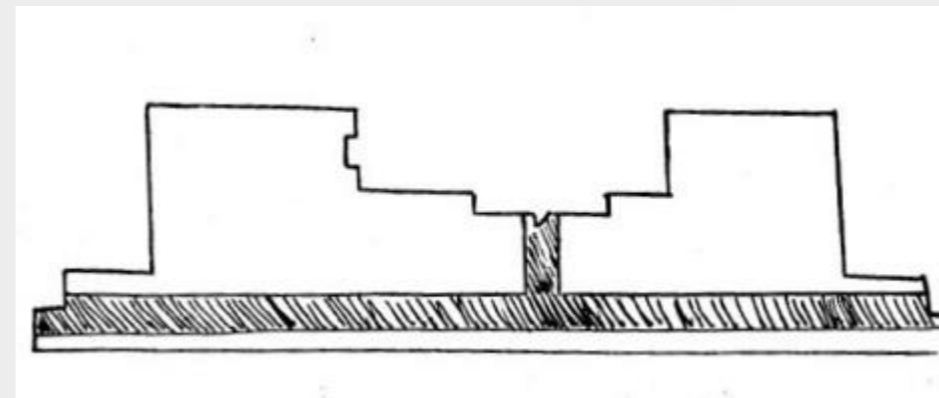
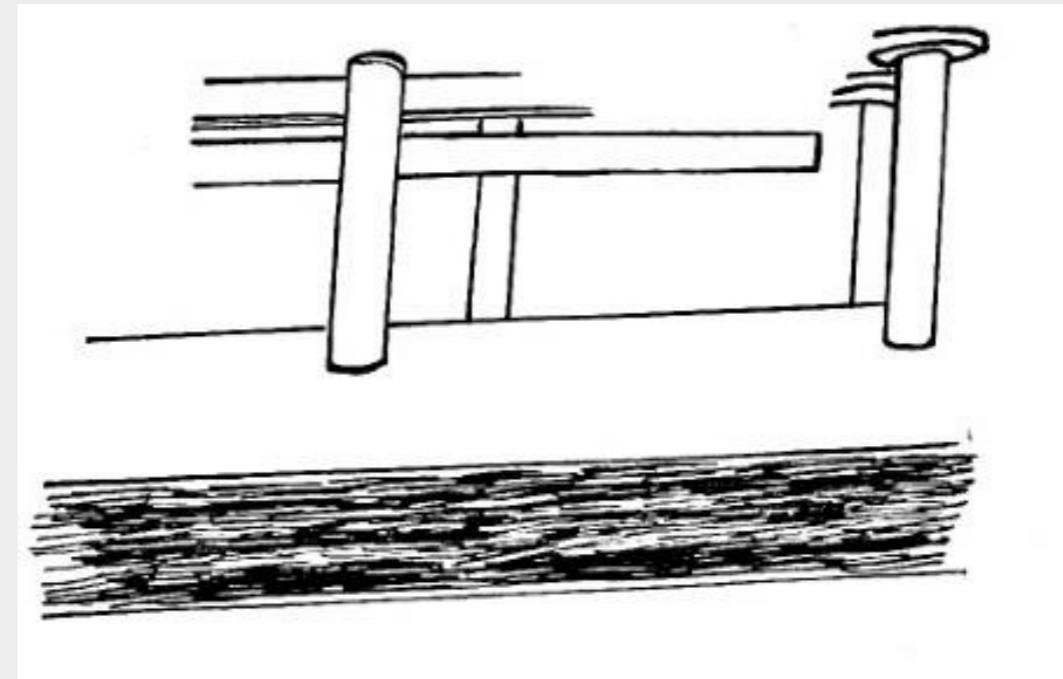
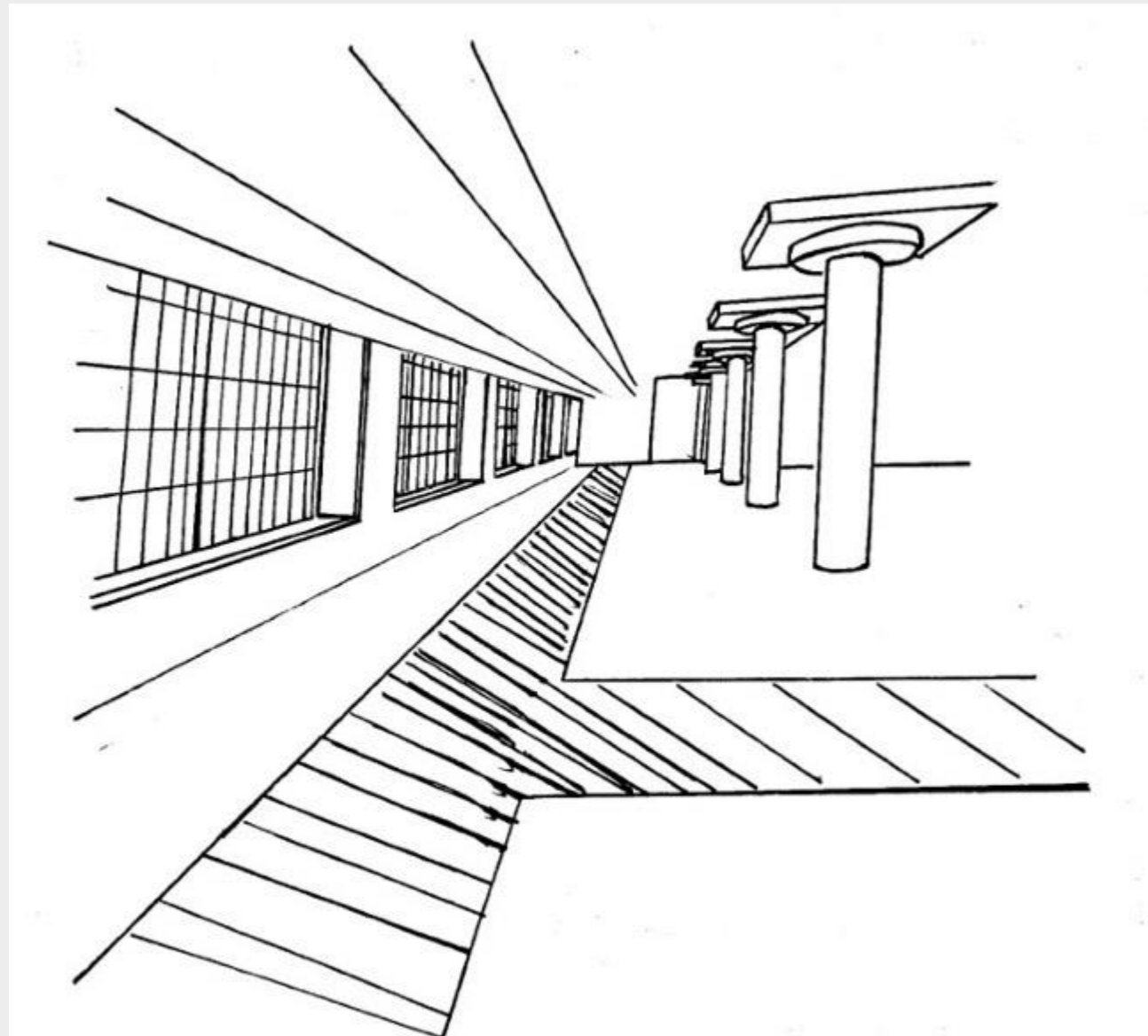


PROBLEM RESOLUTION SKETCHES

WAYFINDING

OPTION 2

❖ TWO-TONE CARPET PATHWAY
THROUGHOUT

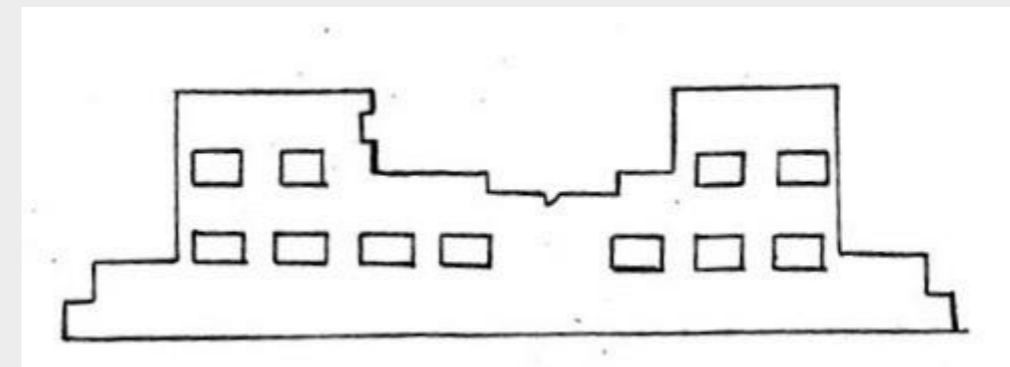
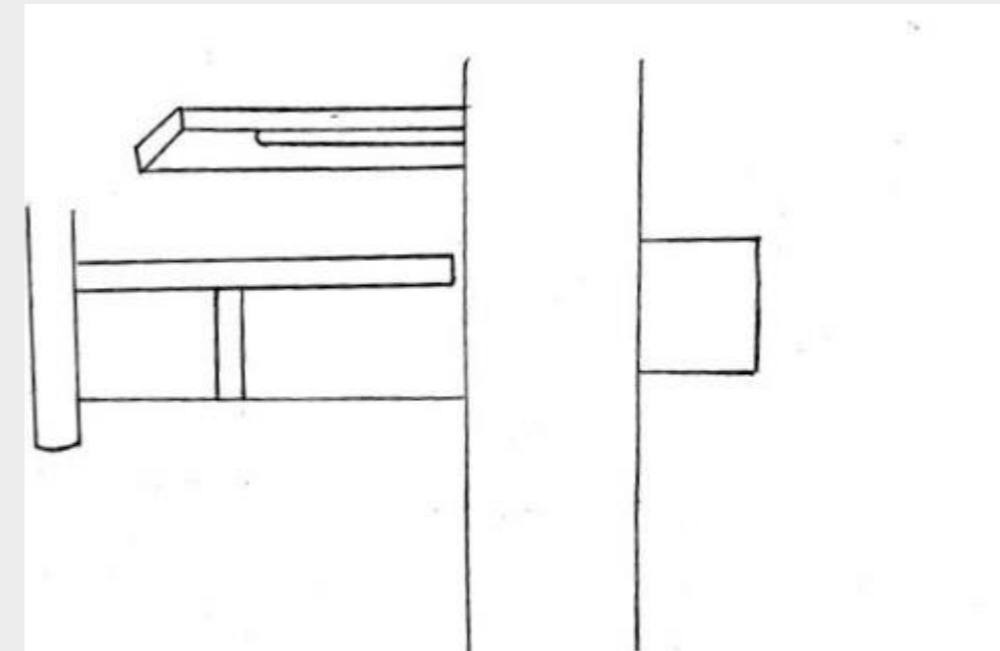
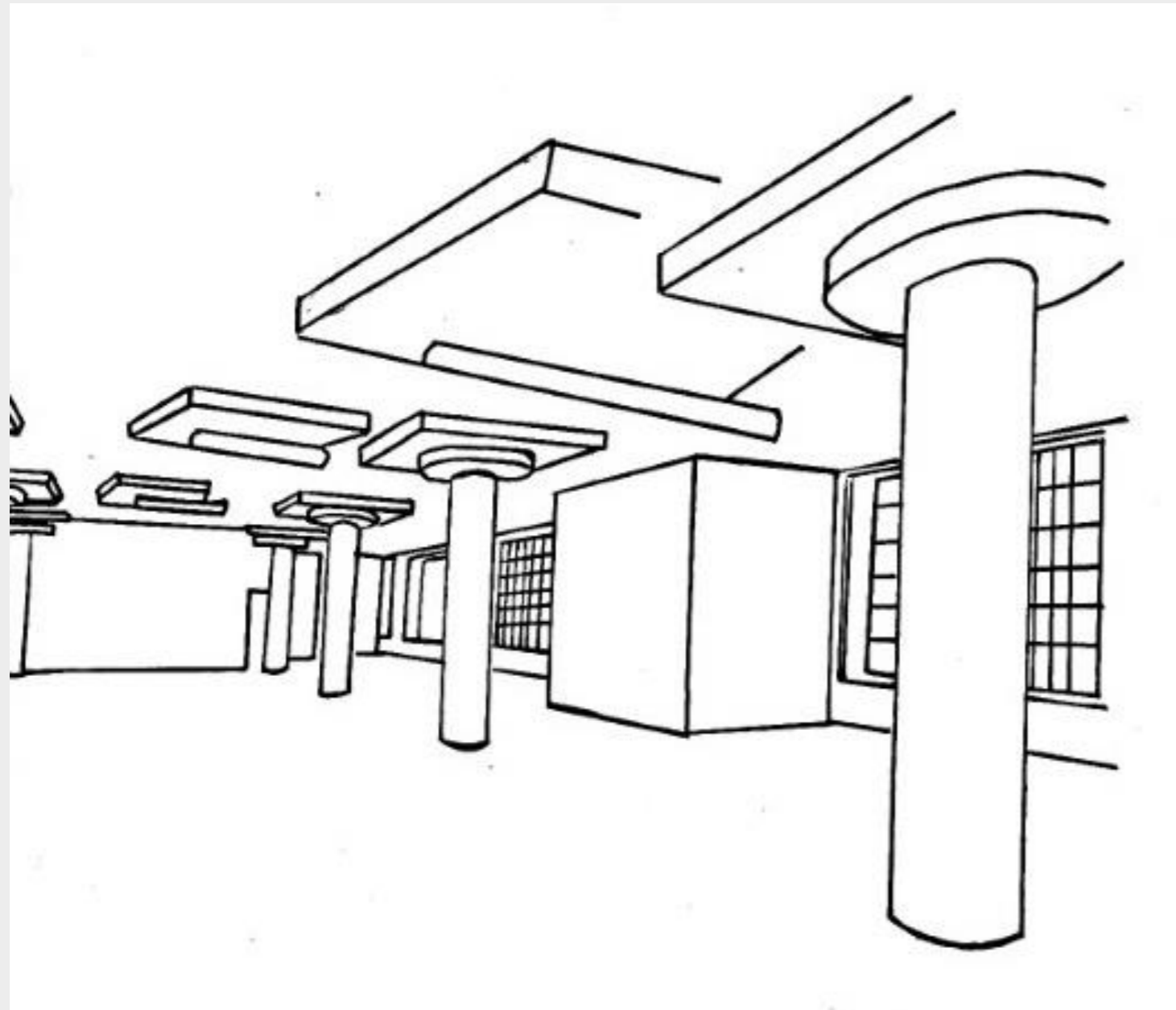


PROBLEM RESOLUTION SKETCHES

CEILING/DAYLIGHTING

OPTION 1

- ❖ ACOUSTIC CEILING TILES
THROUGHOUT WITH ATTACHED
LIGHTING

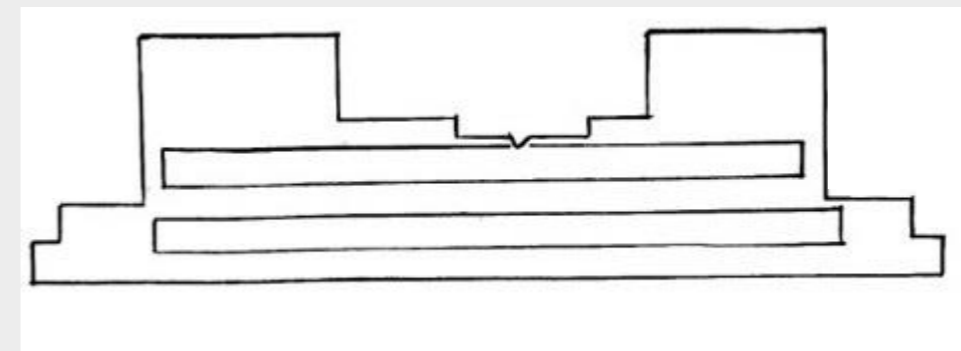
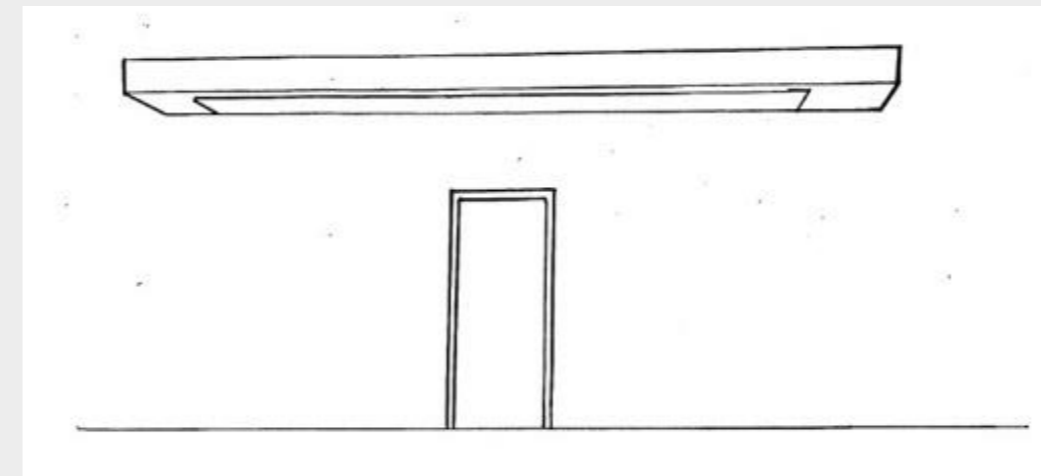
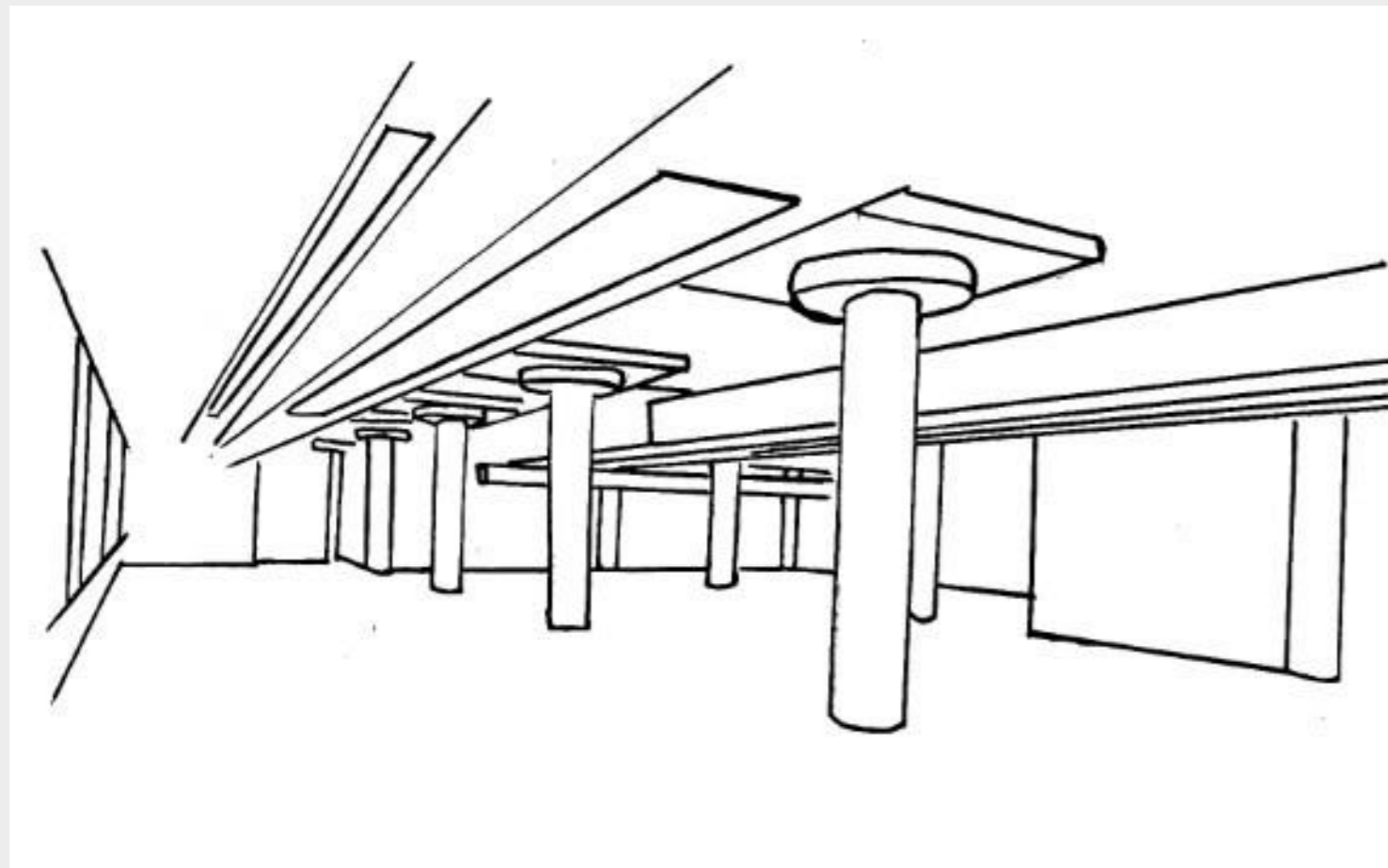


PROBLEM RESOLUTION SKETCHES

CEILING/DAYLIGHTING

OPTION 2

- ❖ ACOUSTIC CEILING PANELS THROUGHOUT WITH ATTACHED LIGHTING

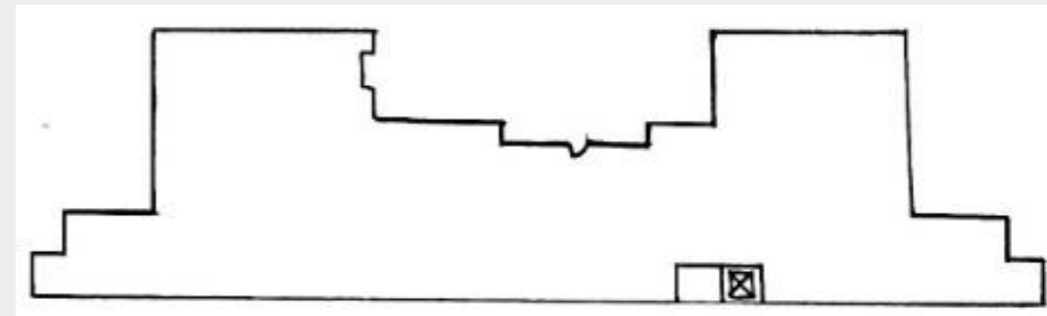
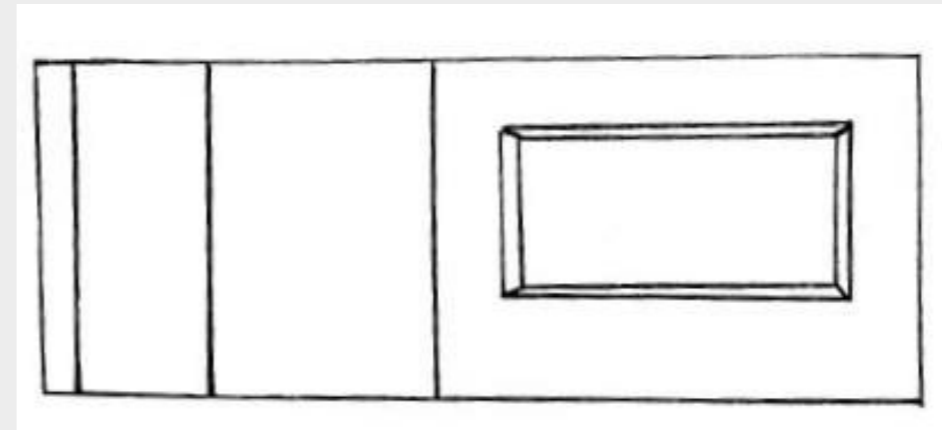
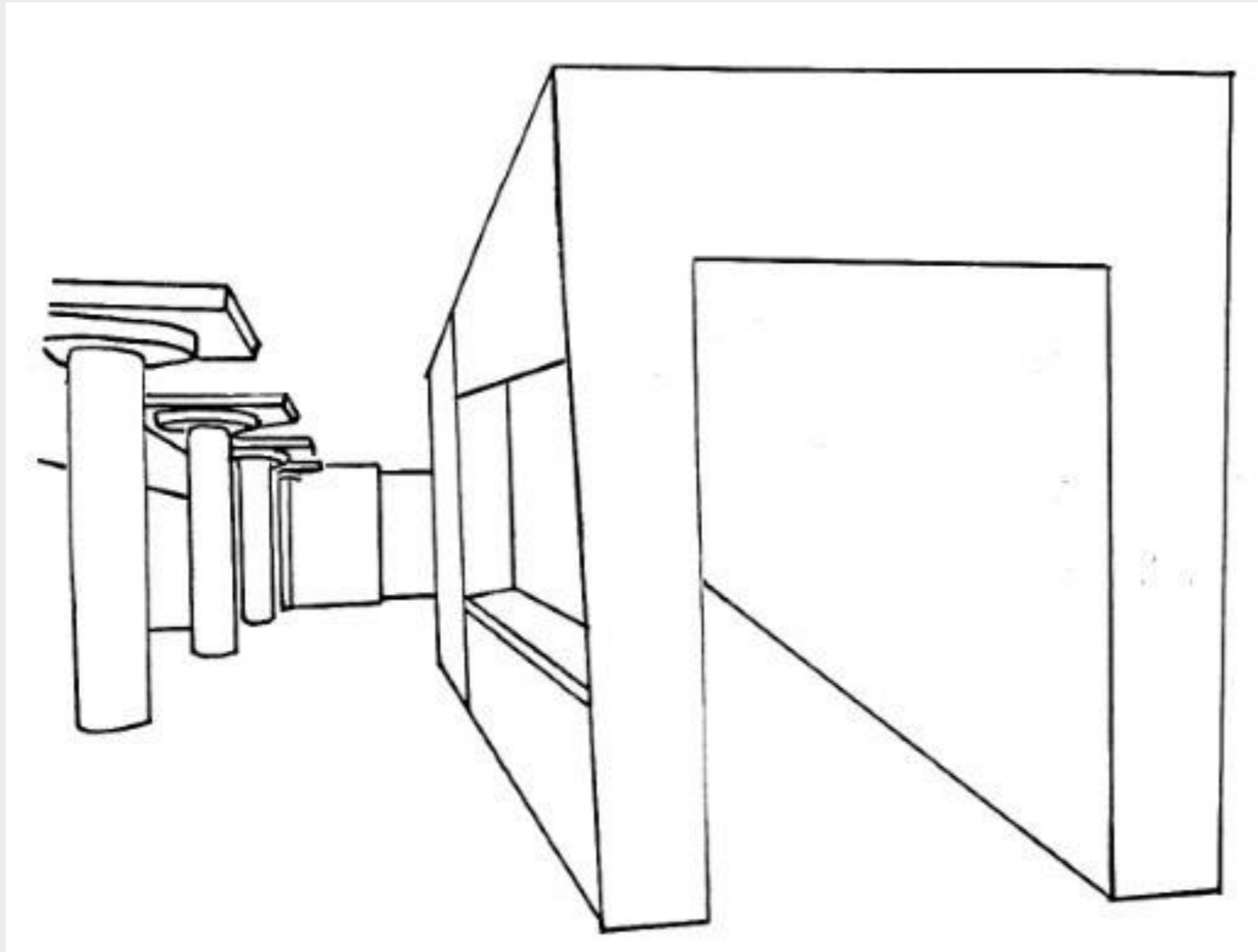


PROBLEM RESOLUTION SKETCHES

SUPPORT SPACES

OPTION 1

❖ PANTRY WITH OPEN COFFEE
BAR

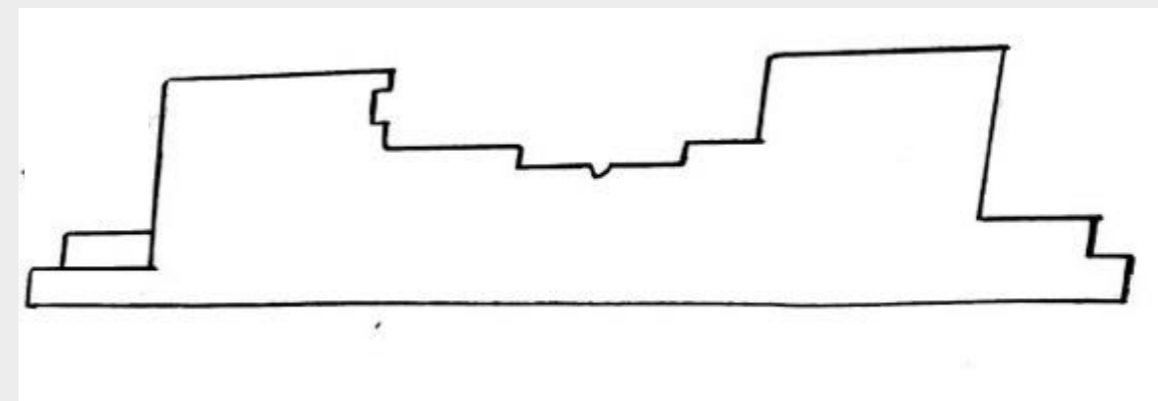
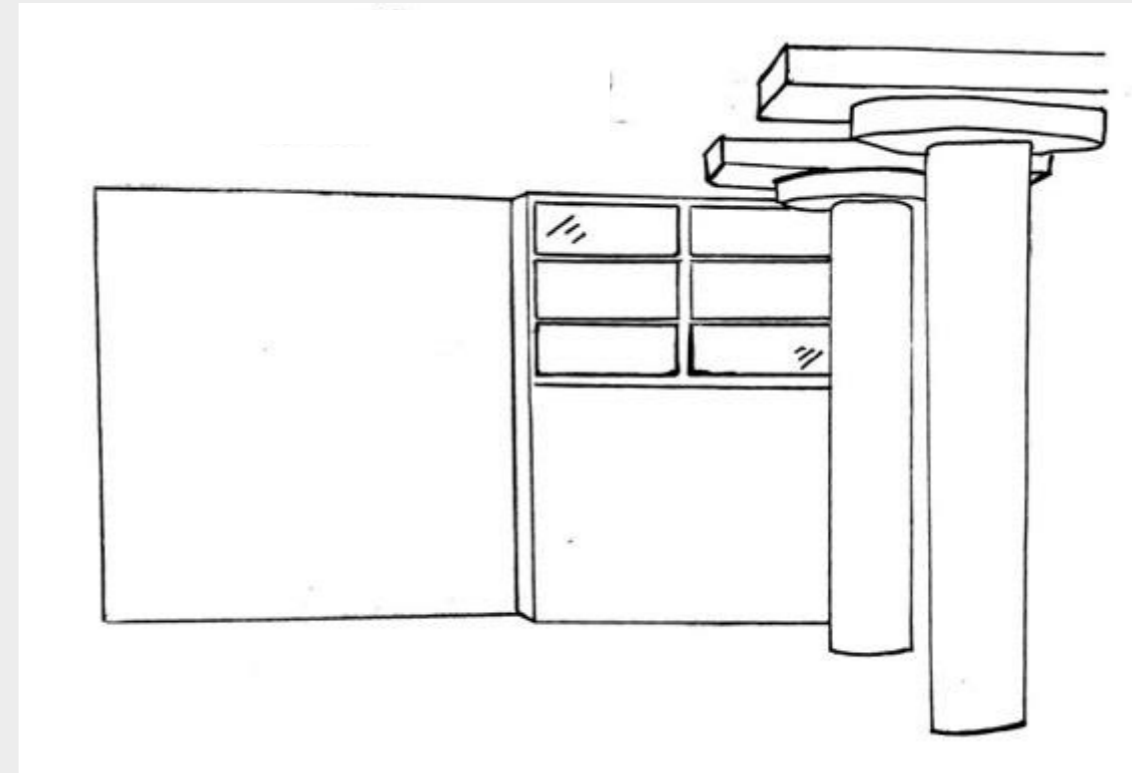
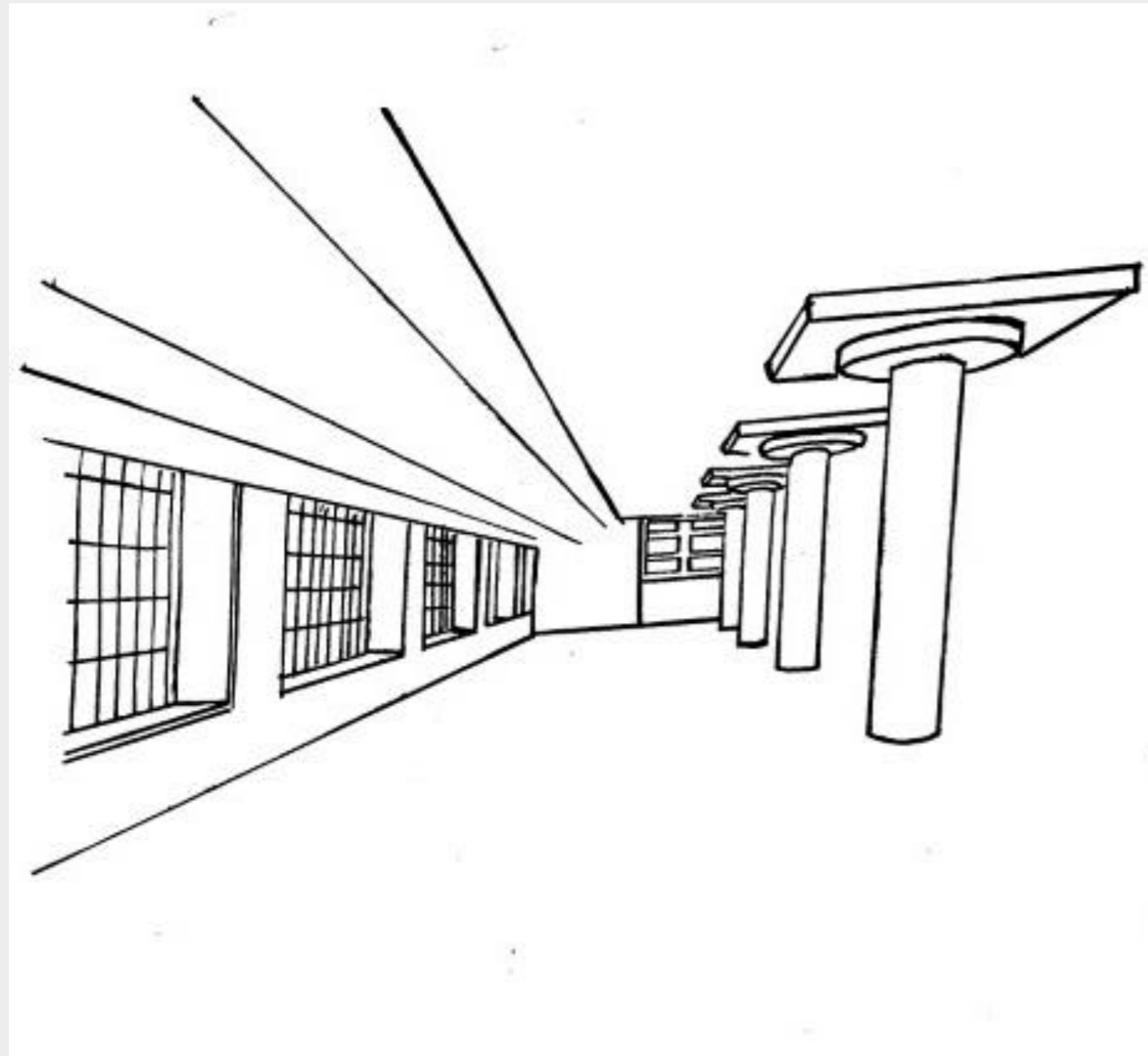


PROBLEM RESOLUTION SKETCHES

SUPPORT SPACES

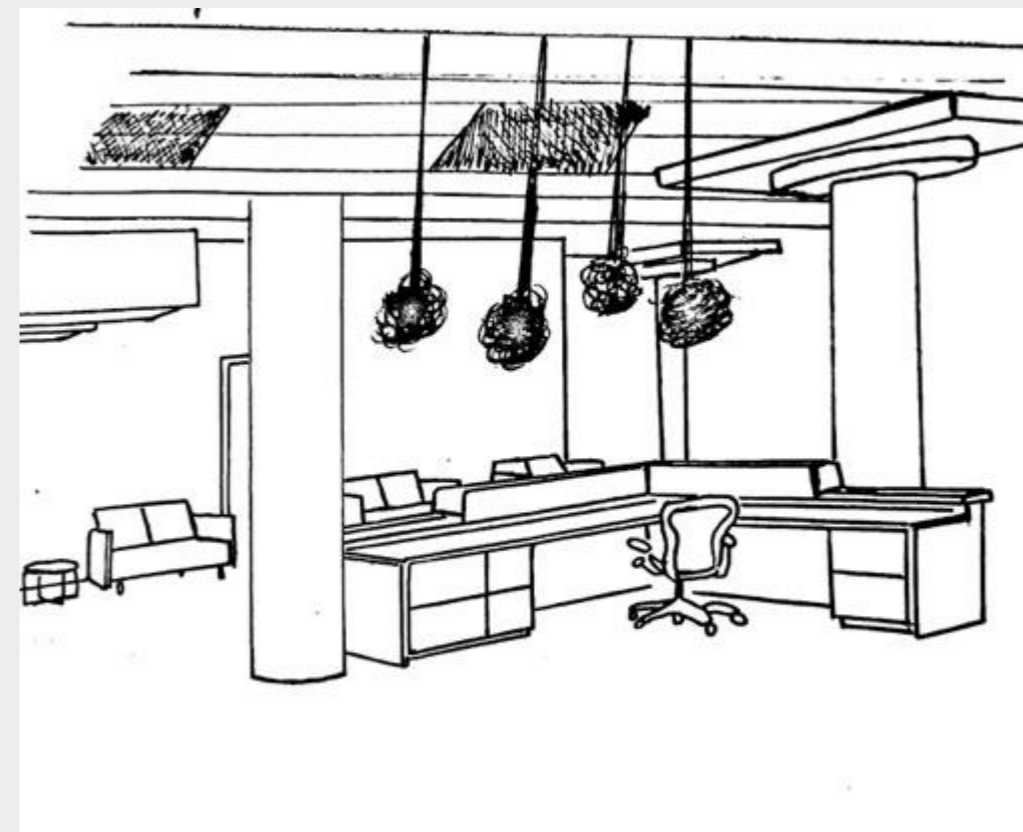
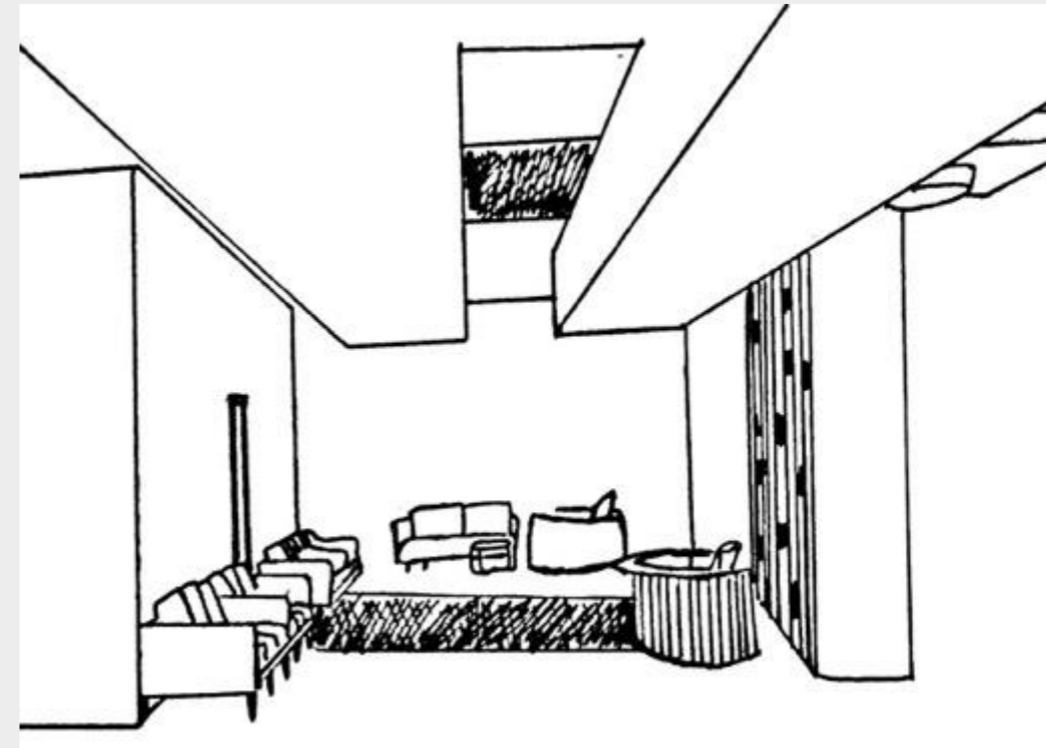
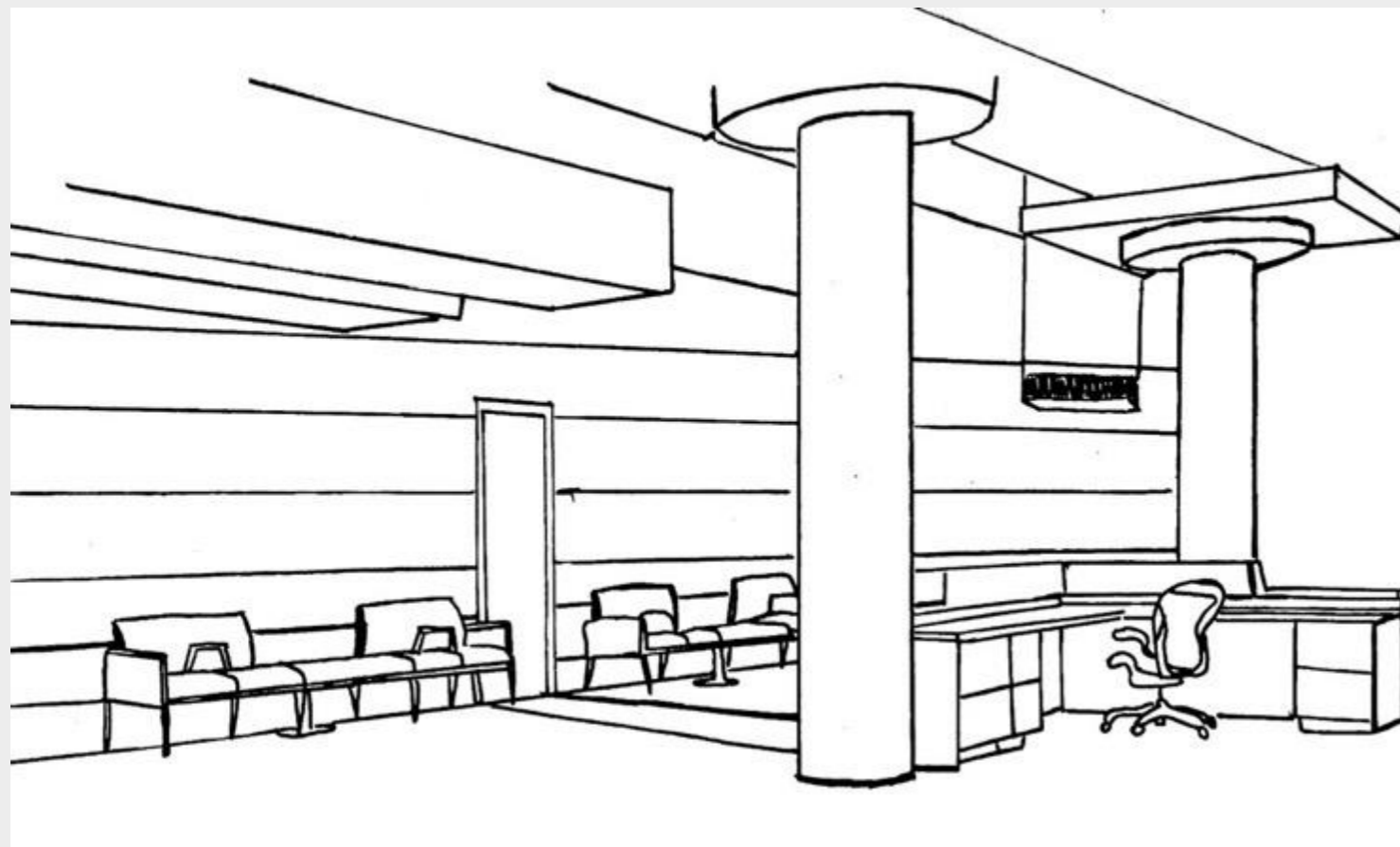
OPTION 2

❖ EQUIPMENT/STORAGE ROOM
GLASS PANEL



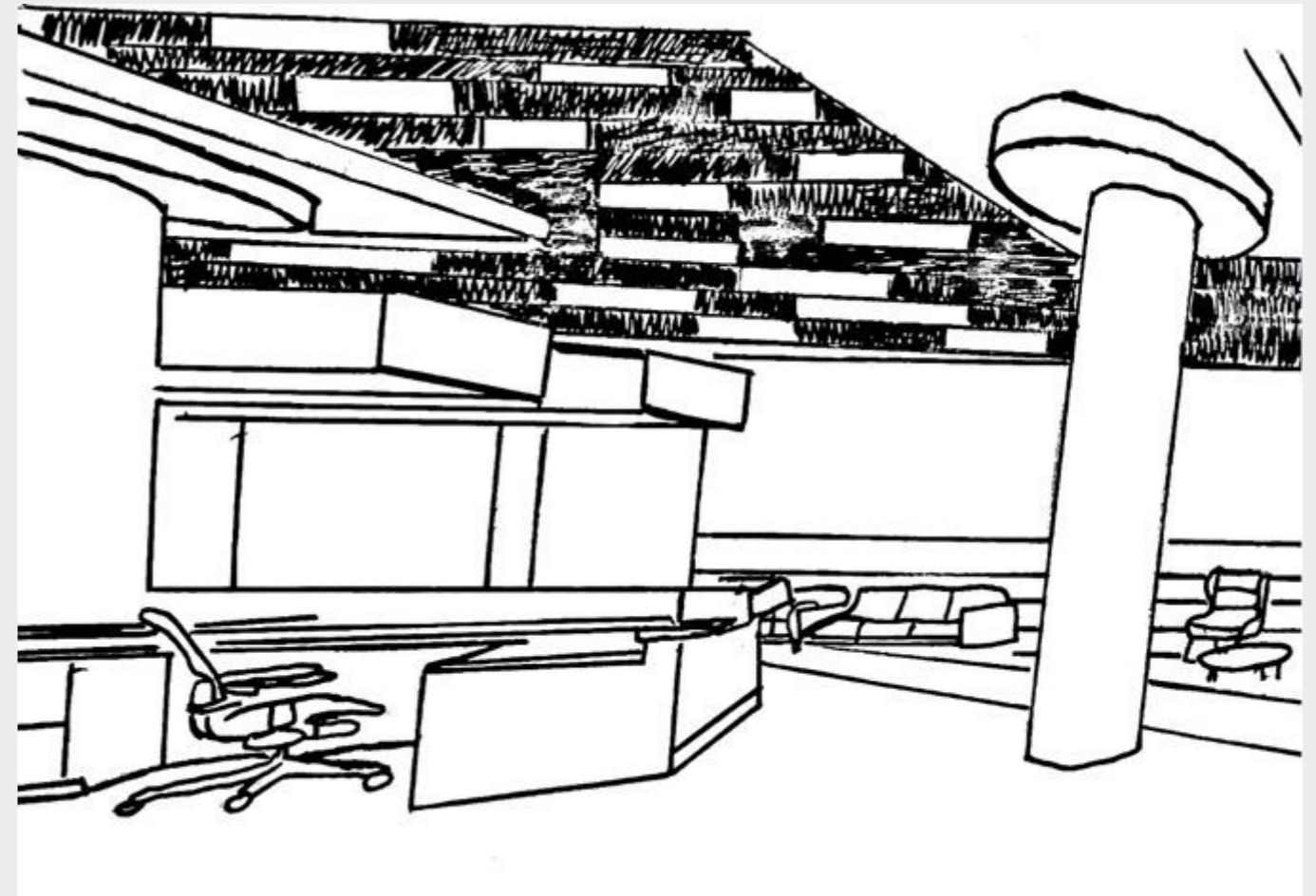
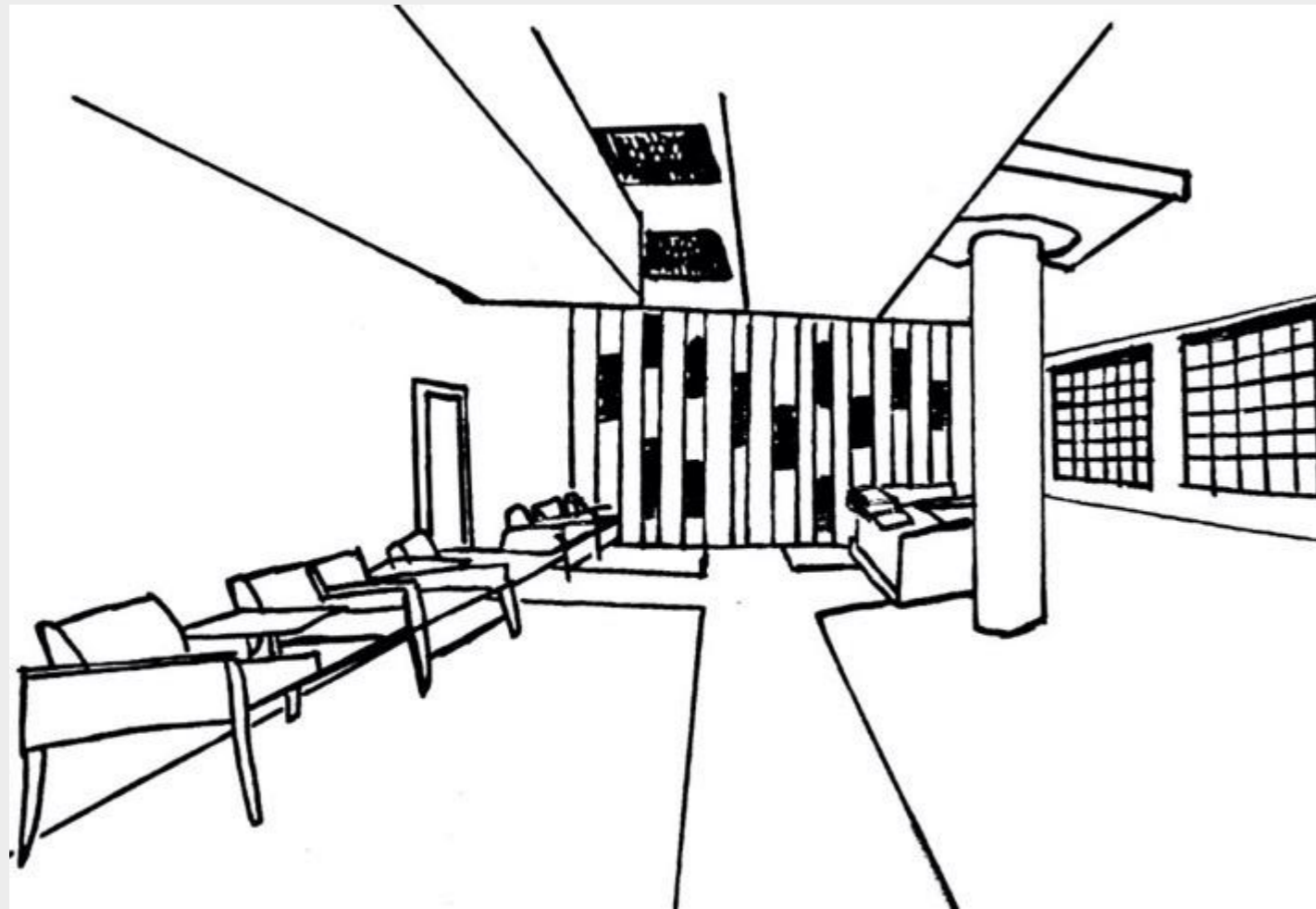
DESIGN SKETCHES

ENTRY/RECEPTION



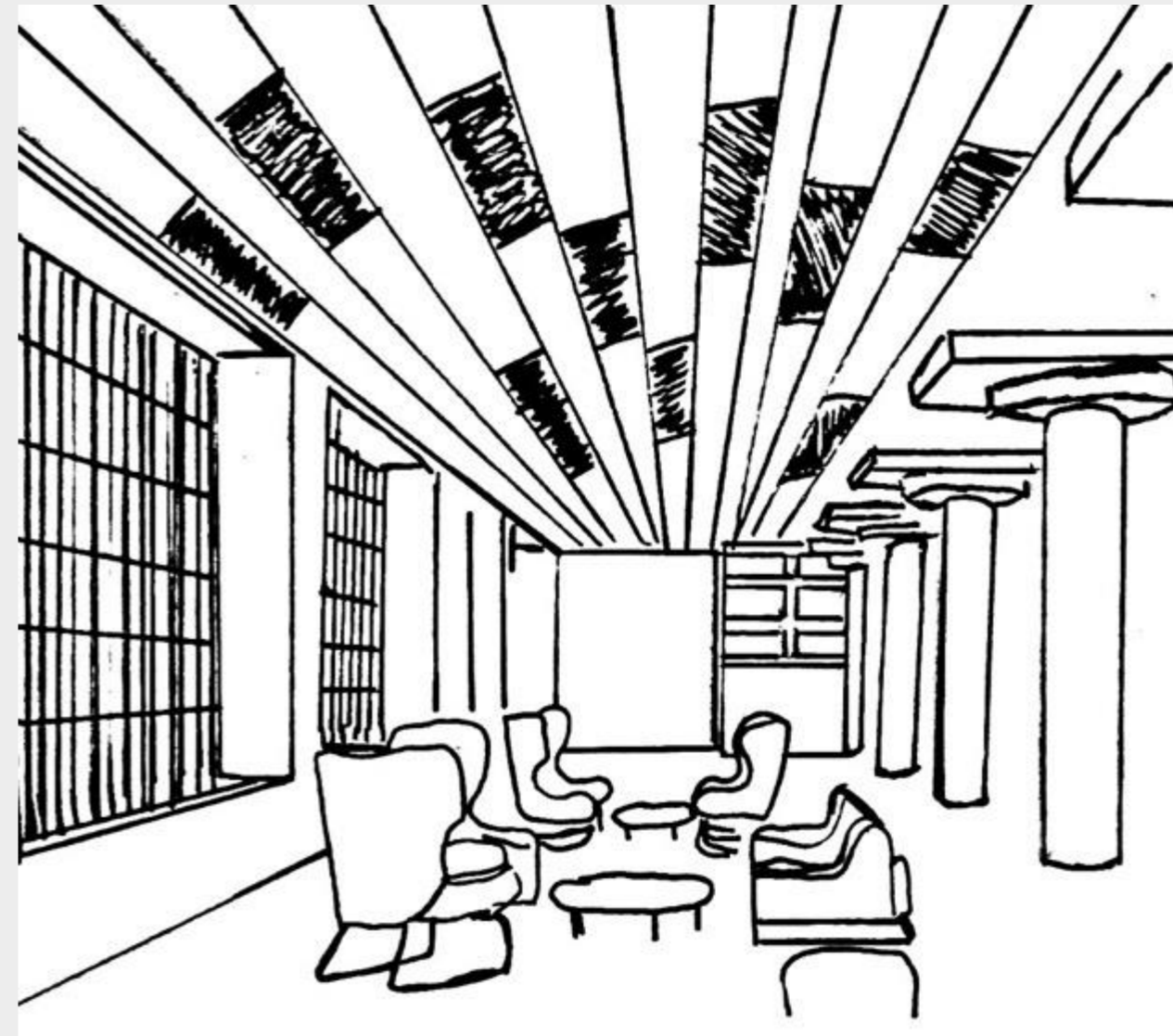
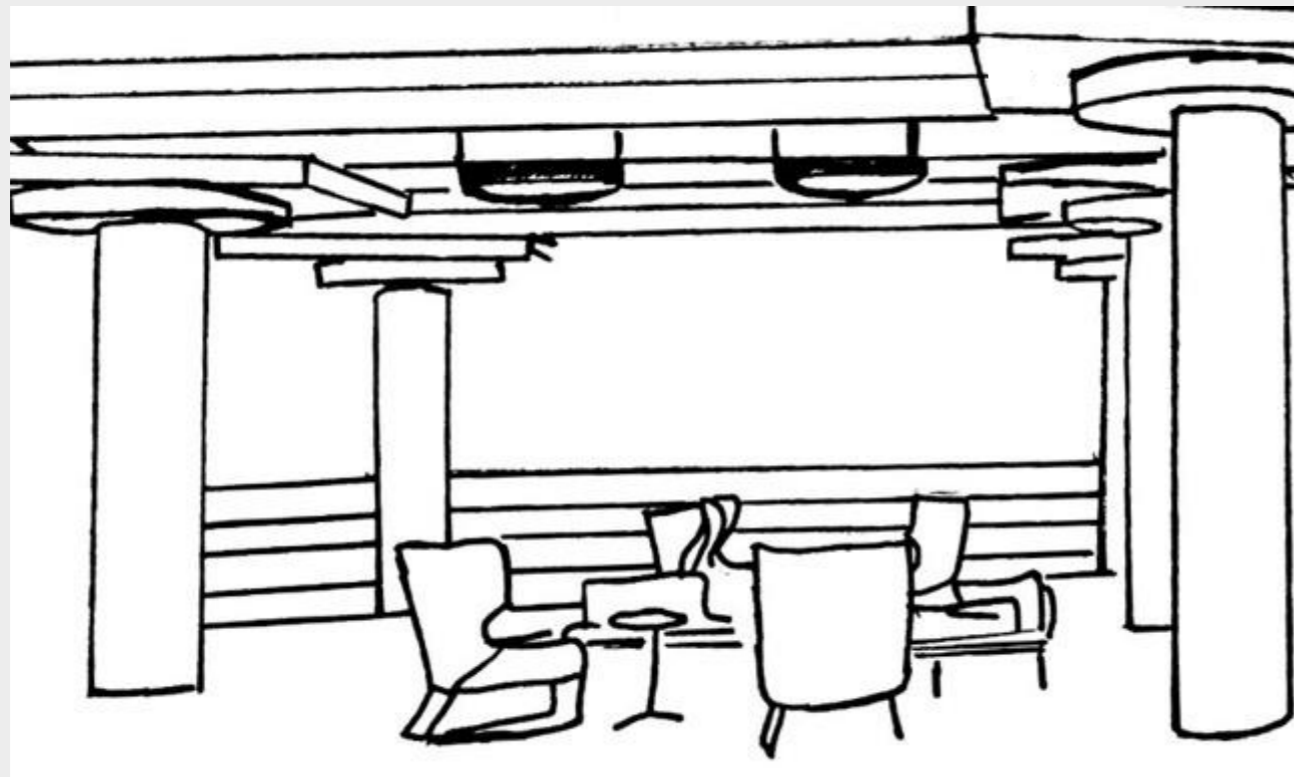
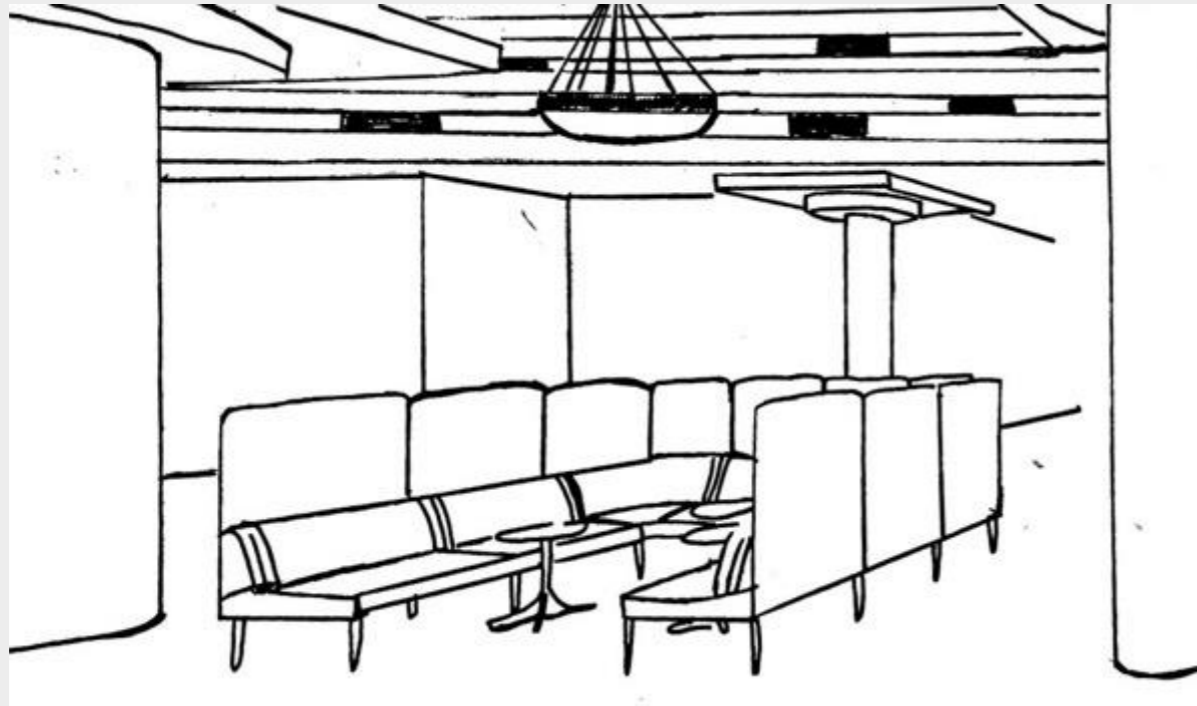
DESIGN SKETCHES

ENTRY/RECEPTION



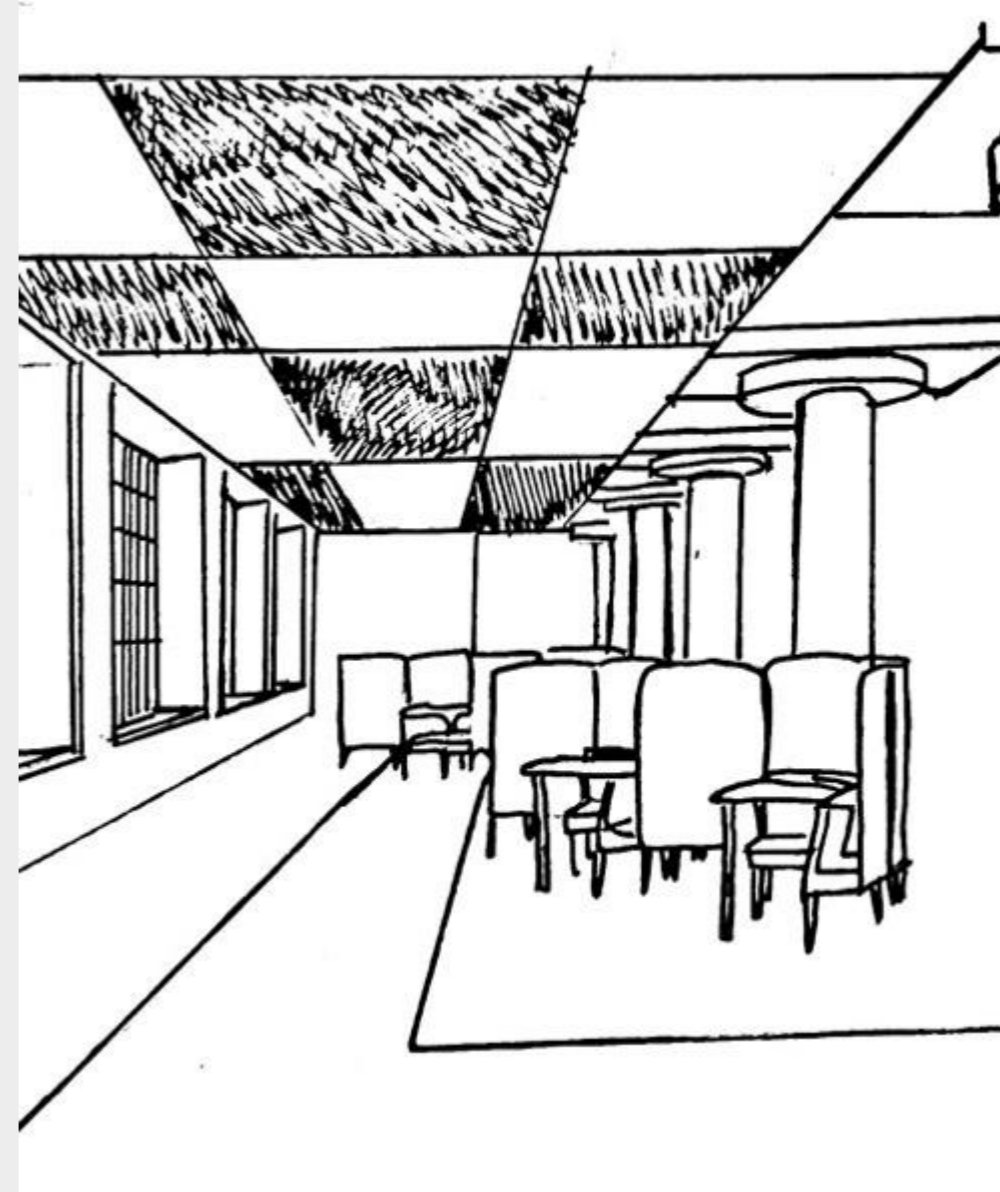
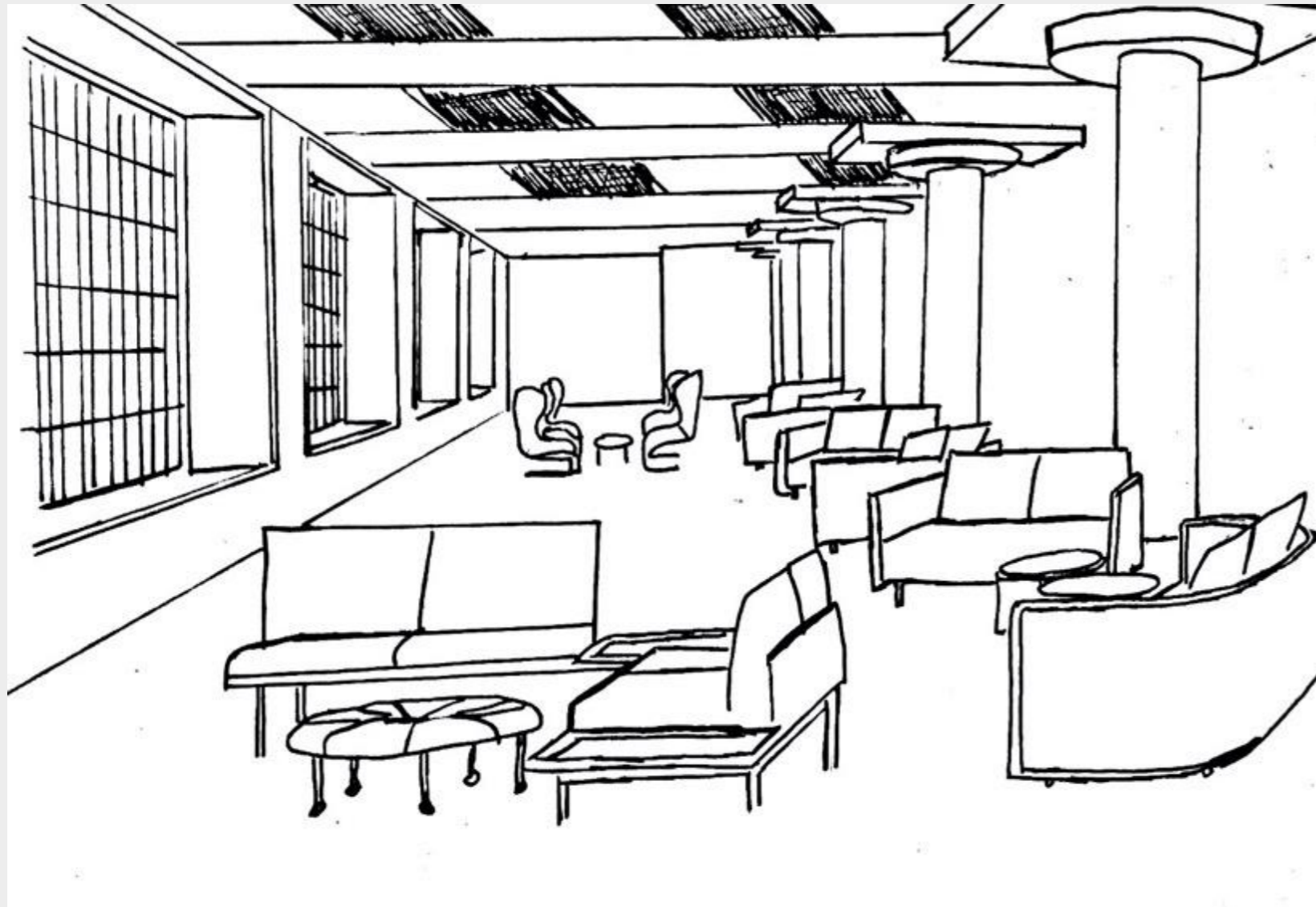
DESIGN SKETCHES

CONCEPT LOUNGE



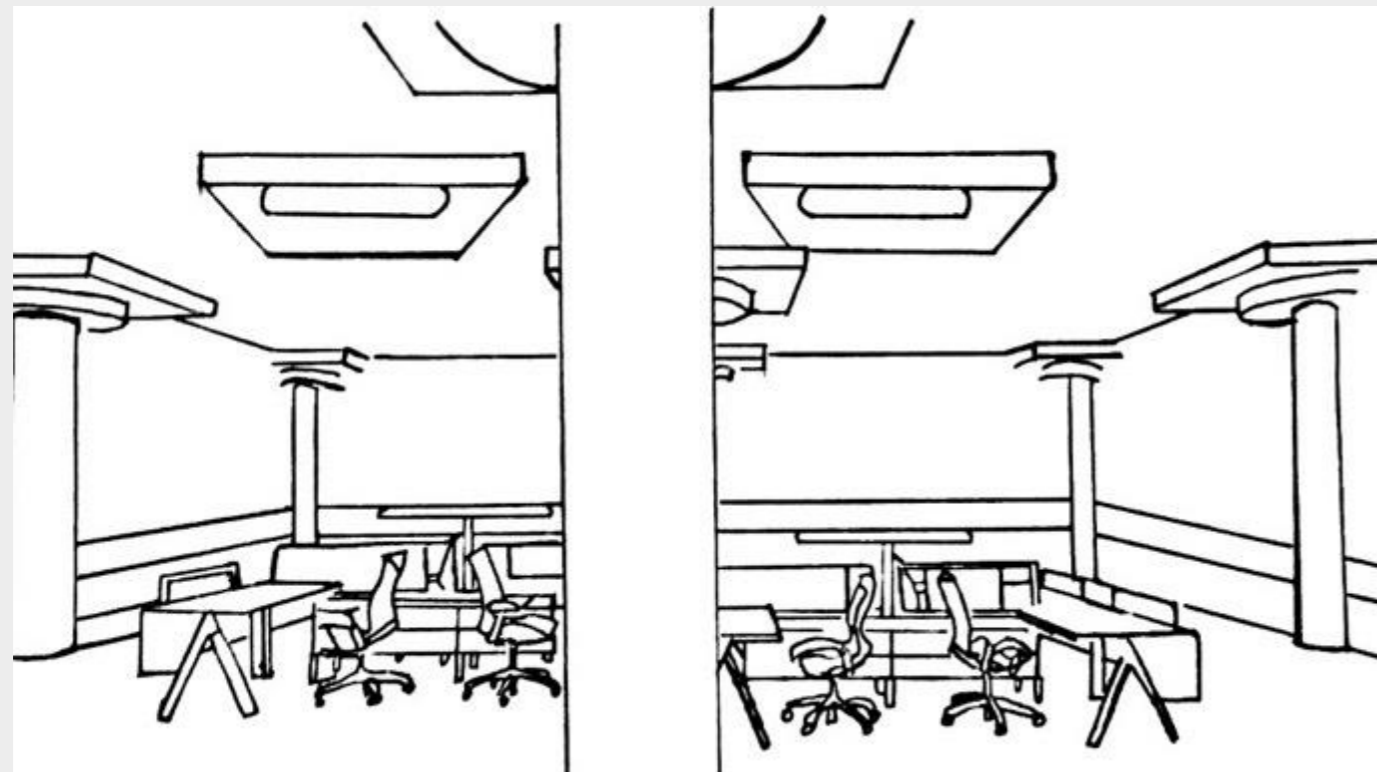
DESIGN SKETCHES

CONCEPT LOUNGE



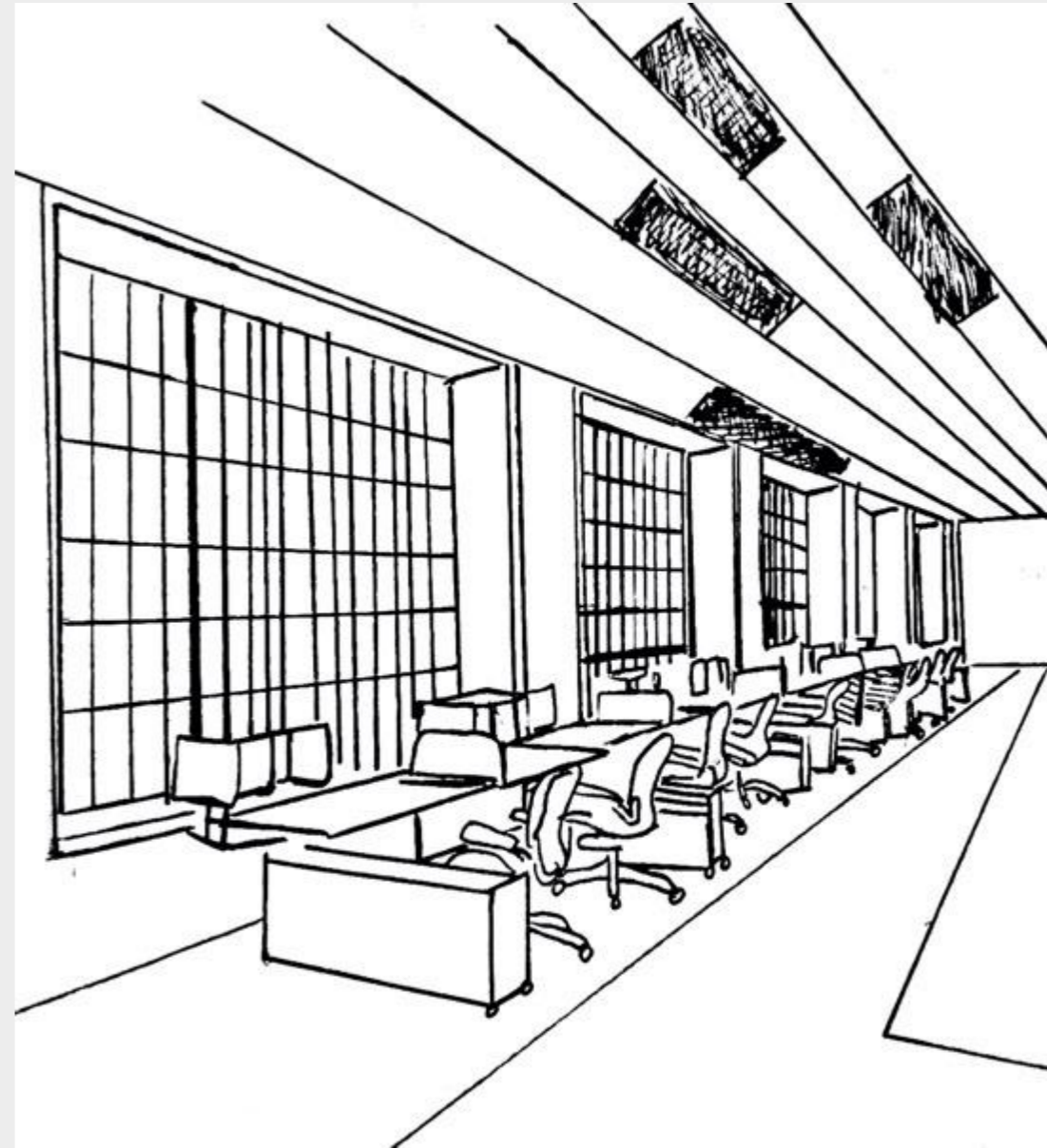
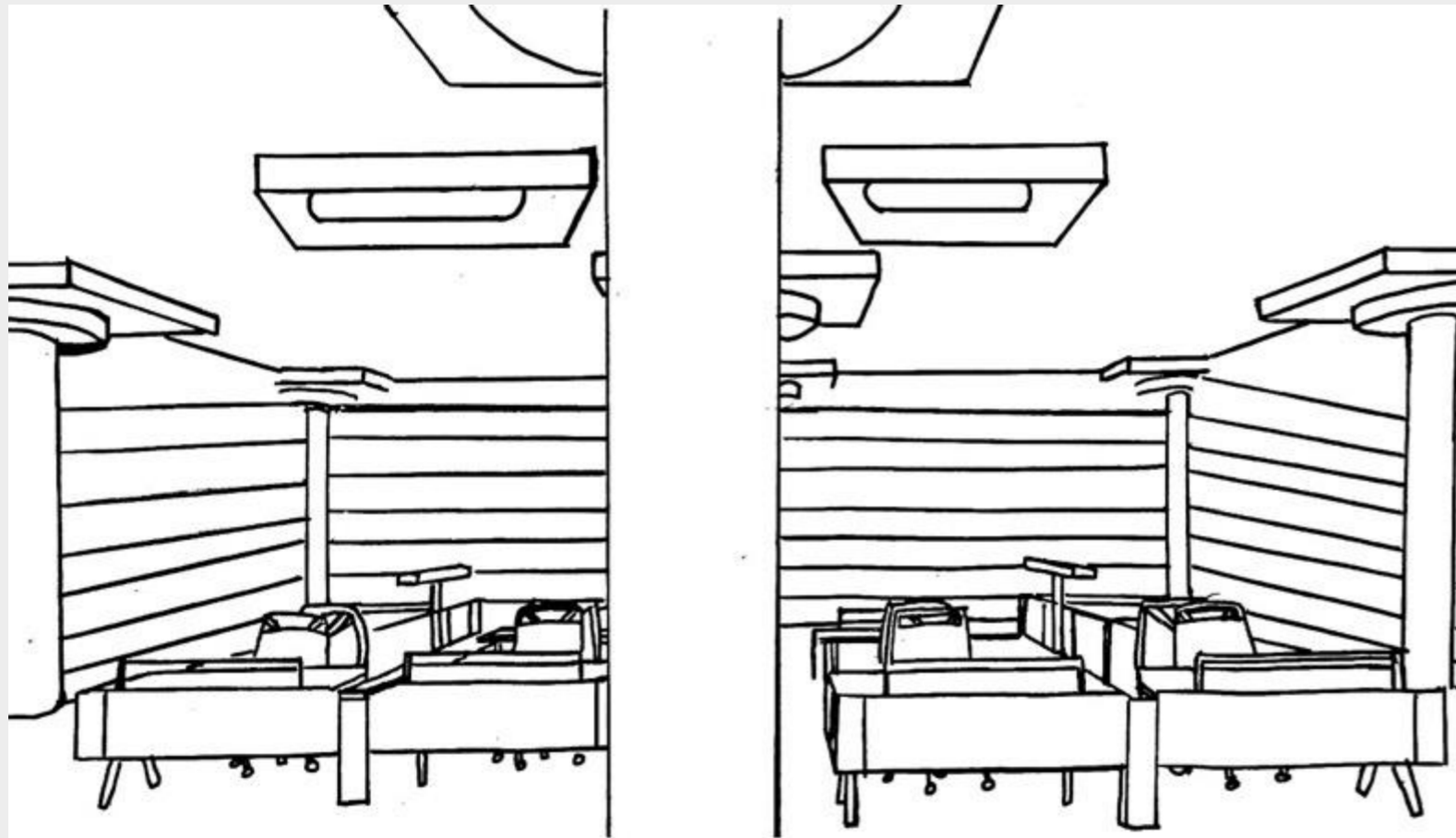
DESIGN SKETCHES

OPEN WORK AREA



DESIGN SKETCHES

OPEN WORK AREA



LIGHTING MODEL

