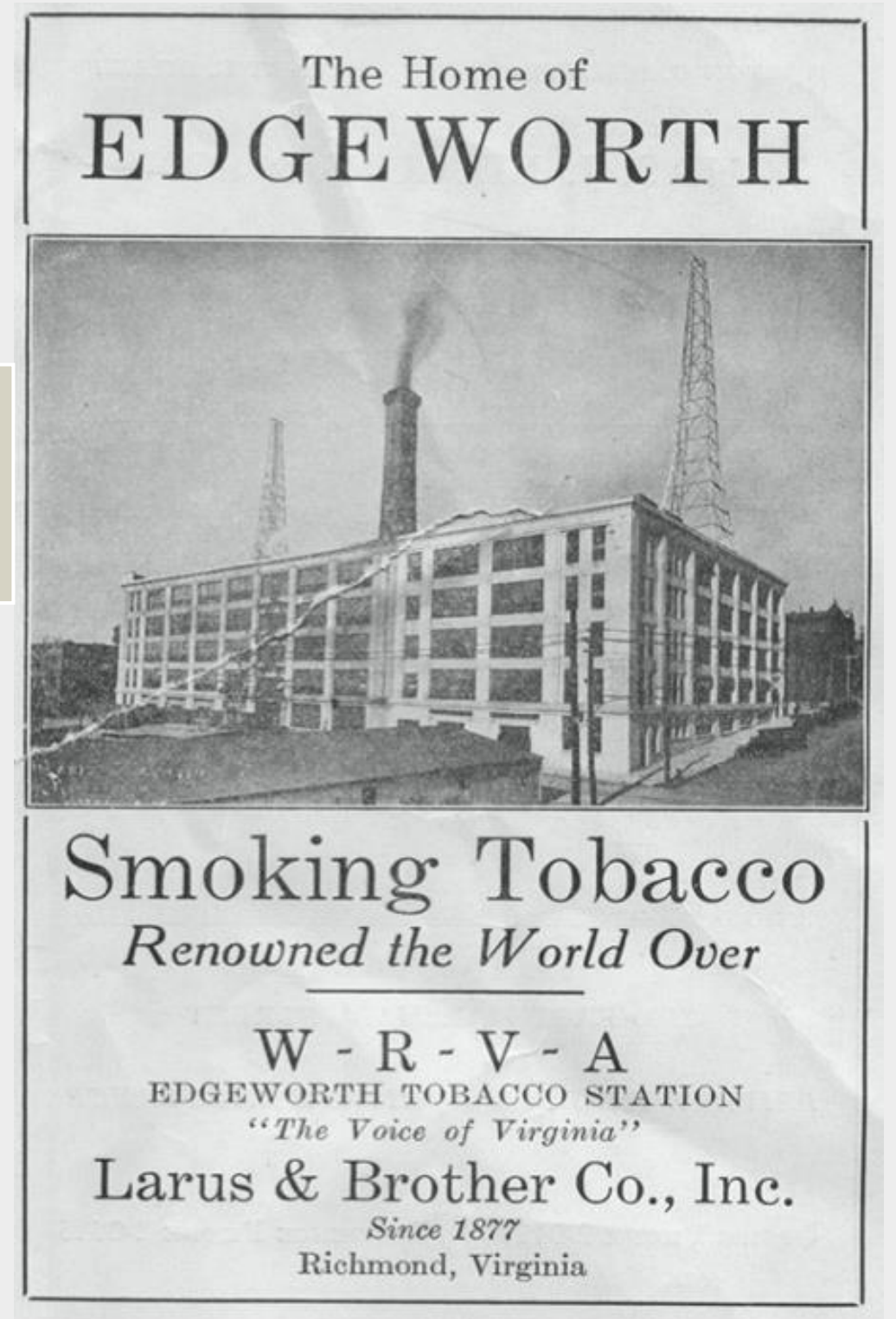
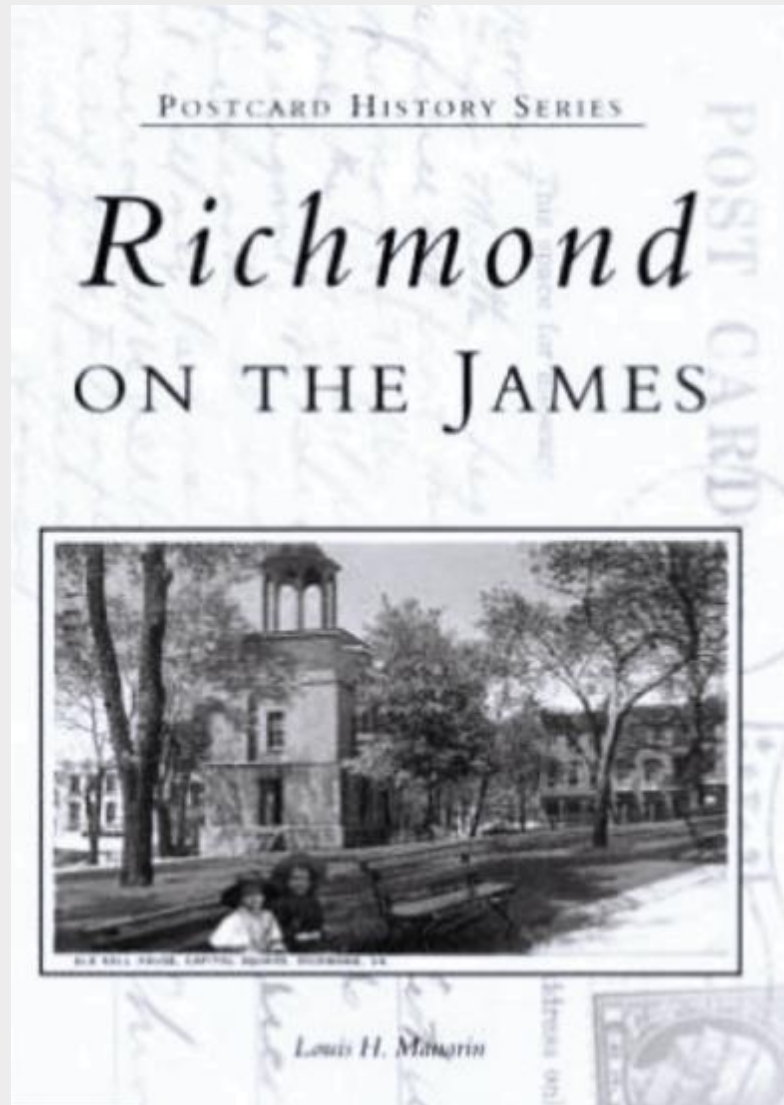


# FINAL SCHEMATIC DESIGN



CARA OWSLEY  
3202 INTERIOR DESIGN STUDIO IV  
SPRING 2020  
PORTFOLIO 3 - EDGEWORTH BUILDING

# COLOR RATIONALE

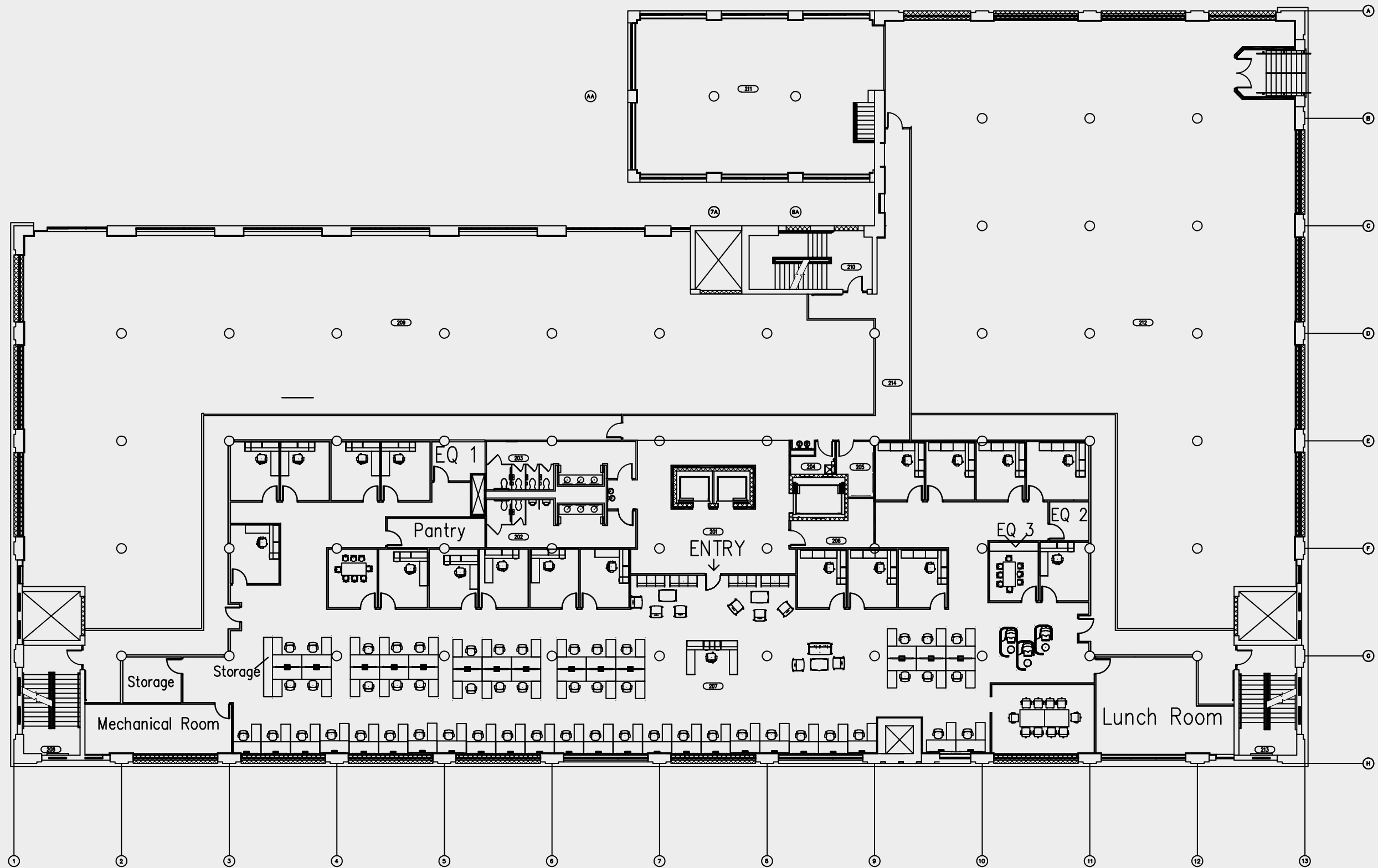


- TO CREATE A PRODUCTIVE ENVIRONMENT HIGHLIGHTING THE HISTORIC ELEMENTS OF TOBACCO ROW
- INSPIRED BY THE JAMES RIVER, THE DESIGN WILL FEATURE MUTED COLORS TO PROMOTE A CALM WORKPLACE ENVIRONMENT




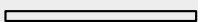





# FURNITURE PLAN

\*NOT TO SCALE

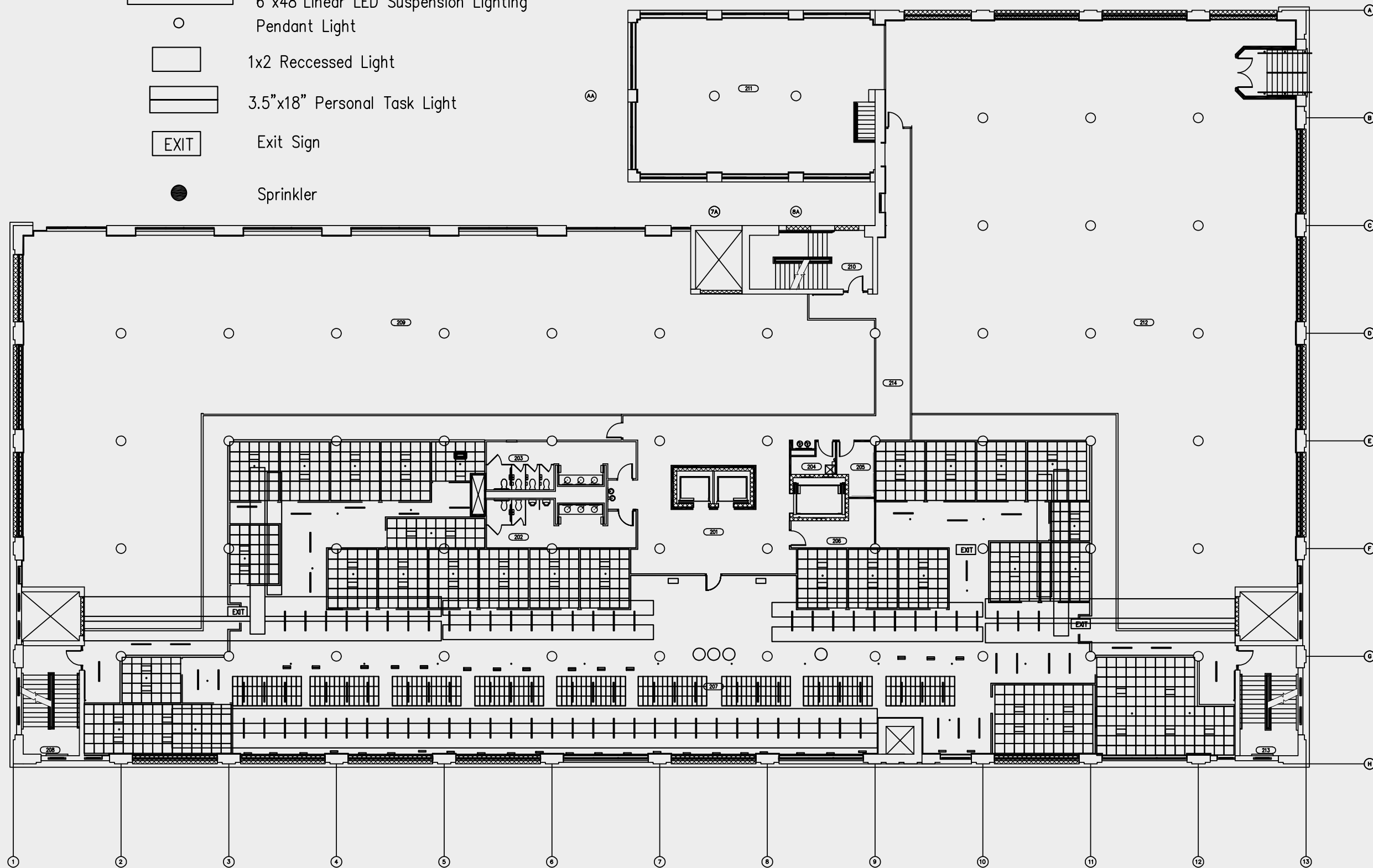


\*NOT TO SCALE

# RCP Legend

-  2x2 Ceiling Tile
-  6"x48" Linear LED Suspension Lighting
-  Pendant Light
-  1x2 Recessed Light
-  3.5"x18" Personal Task Light
-  Exit Sign
-  Sprinkler

# REFLECTED CEILING PLAN

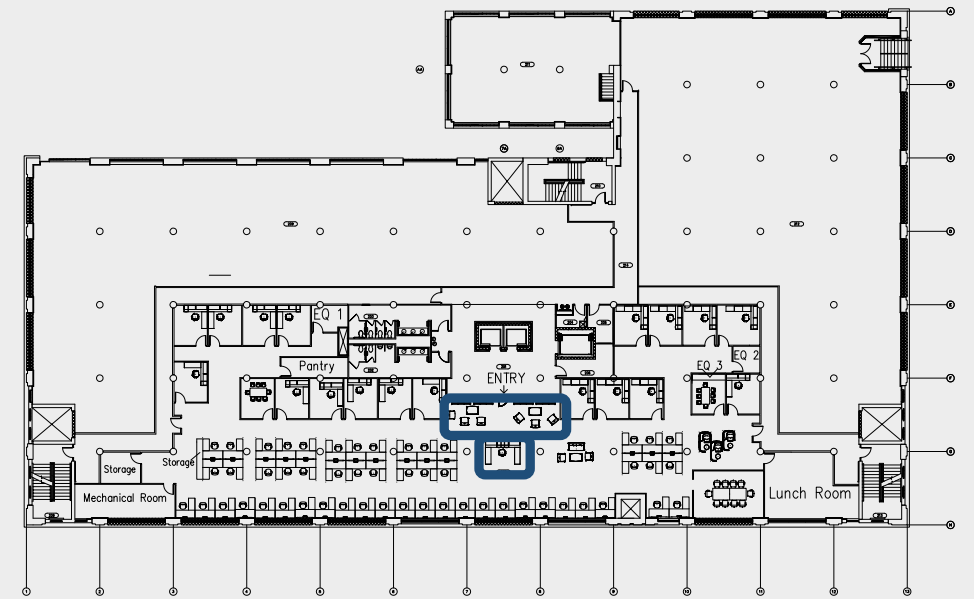


Note: Custom Lighting integrated in the wall & ceiling in the reception area see details



# PERSPECTIVES

## ENTRY/RECEPTION





# FURNITURE & FINISHES

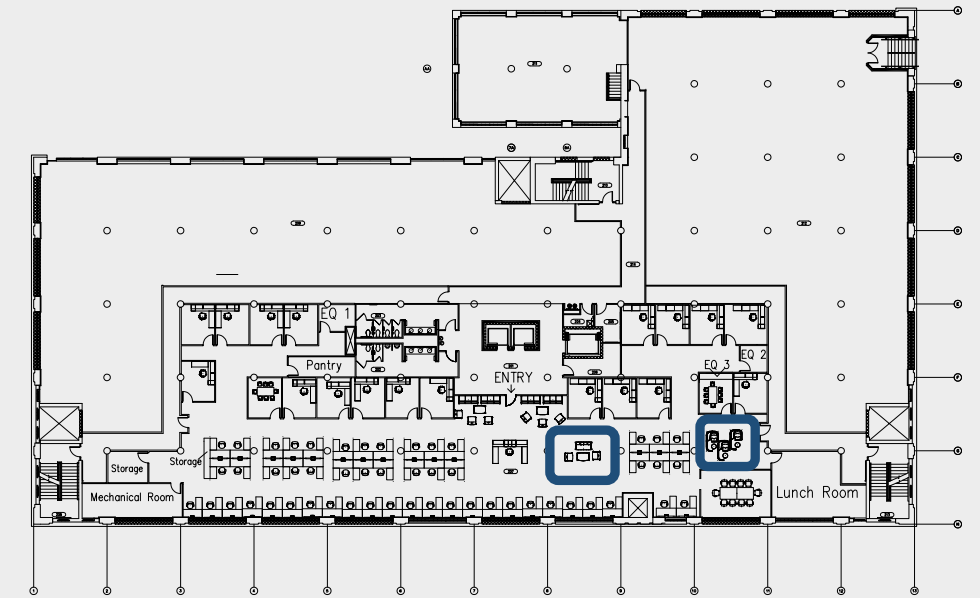
## ENTRY/RECEPTION





# PERSPECTIVES

## CONCEPT LOUNGE





# FURNITURE & FINISHES

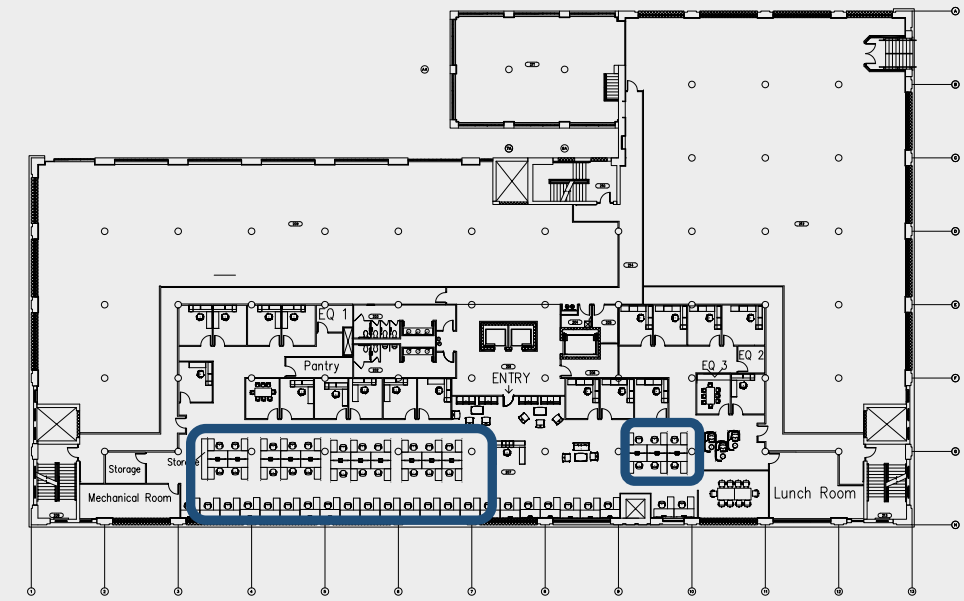
## CONCEPT LOUNGE





# PERSPECTIVES

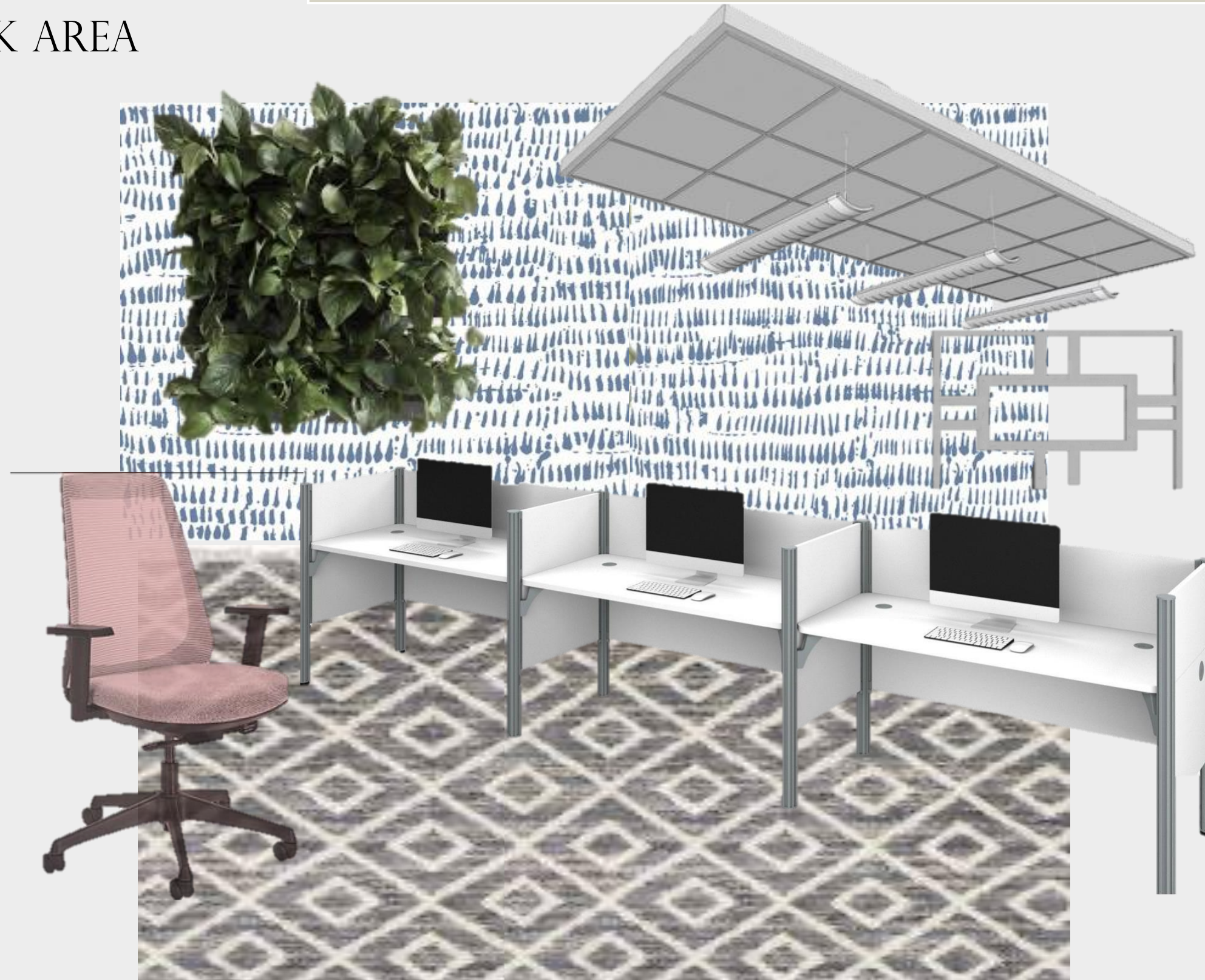
## OPEN WORK AREA





# FURNITURE & FINISHES

## OPEN WORK AREA



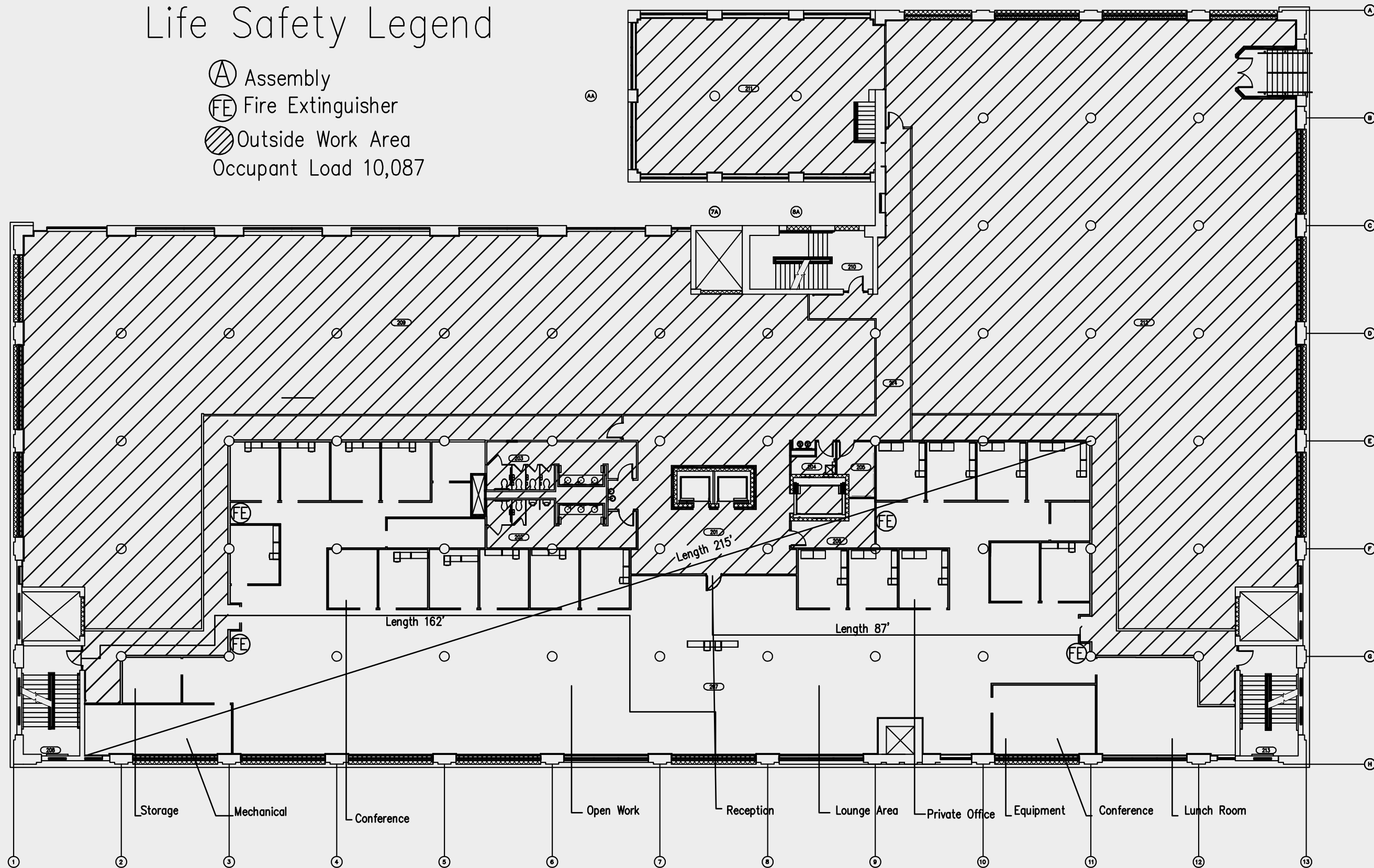


# LIFE SAFETY PLAN

\*NOT TO SCALE

## Life Safety Legend

- Ⓐ Assembly
- Ⓕ Fire Extinguisher
- ▨ Outside Work Area  
Occupant Load 10,087



# LIFE SAFETY PLAN

## Building Construction and Occupancy

Construction Type	Sprinklers?	Occupancy Type			
Type I	Yes	B			

## Exit Requirements: Number and Arrangement of Exits

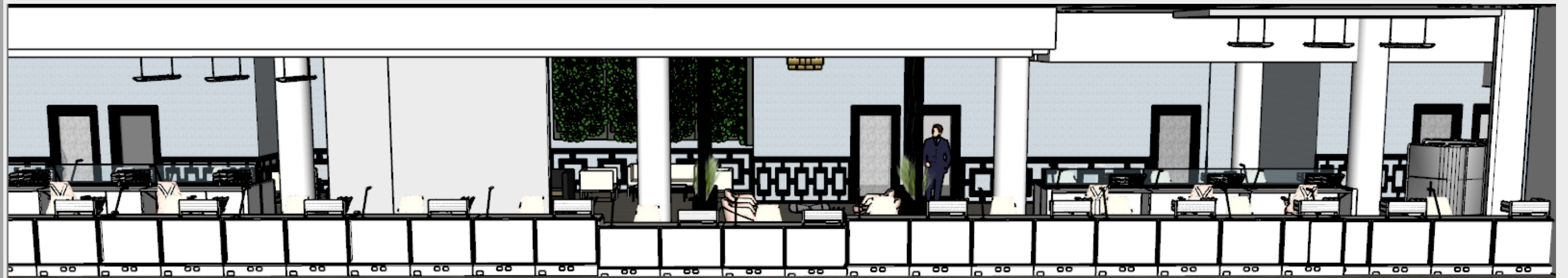
Space Designation	# of Exits		Travel Distance		Arrangement: Means of Egress	
	Required	Shown on Plans	Allowable Distance	Actual Distance Shown on Plans	Req'd Distance Between Exits	Actual Distance Shown on Plans
Suite 3100	2	2	300'-0"	150'	72'	249'

Notes:

Use Group or Space Designation	(A)	(B)	Calculated Occupant Load = A/B	©		Exit Width (Inches)			
	Area = Sq. Ft.	Area per Occupant		Egress per Occupant		Required Width = (A/B)xC		Actual Width	
				Stair	Level	Stair	Level	Stair	Level
Suite 3100	10,087	100	100	.3"	.2"	30"	20"	56"	60"

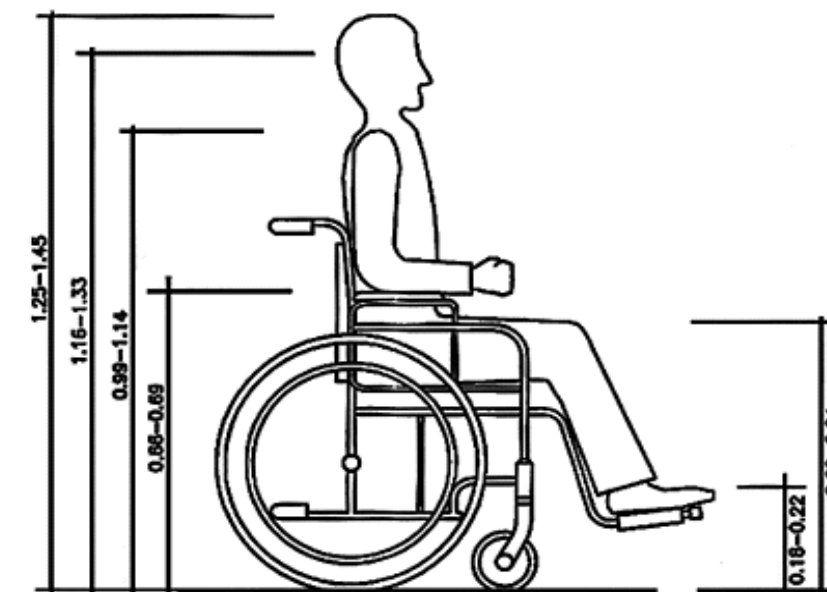
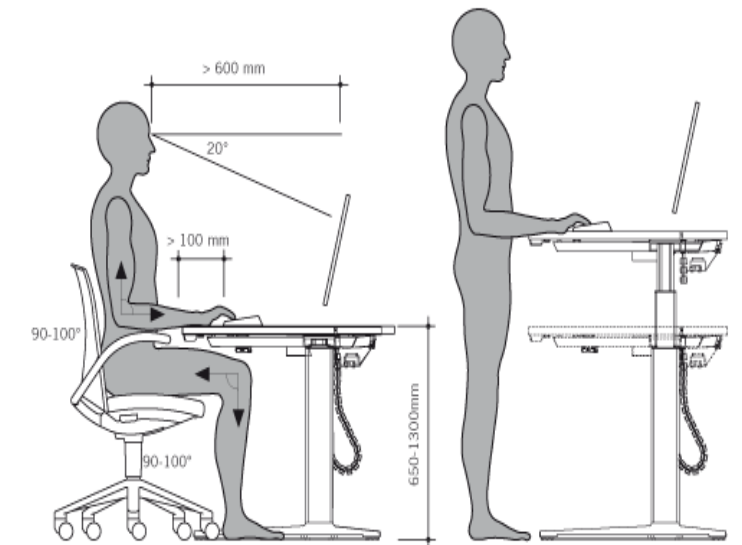


# E-W SECTION



# ANTHROPOMETRIC & ERGONOMIC FEATURES

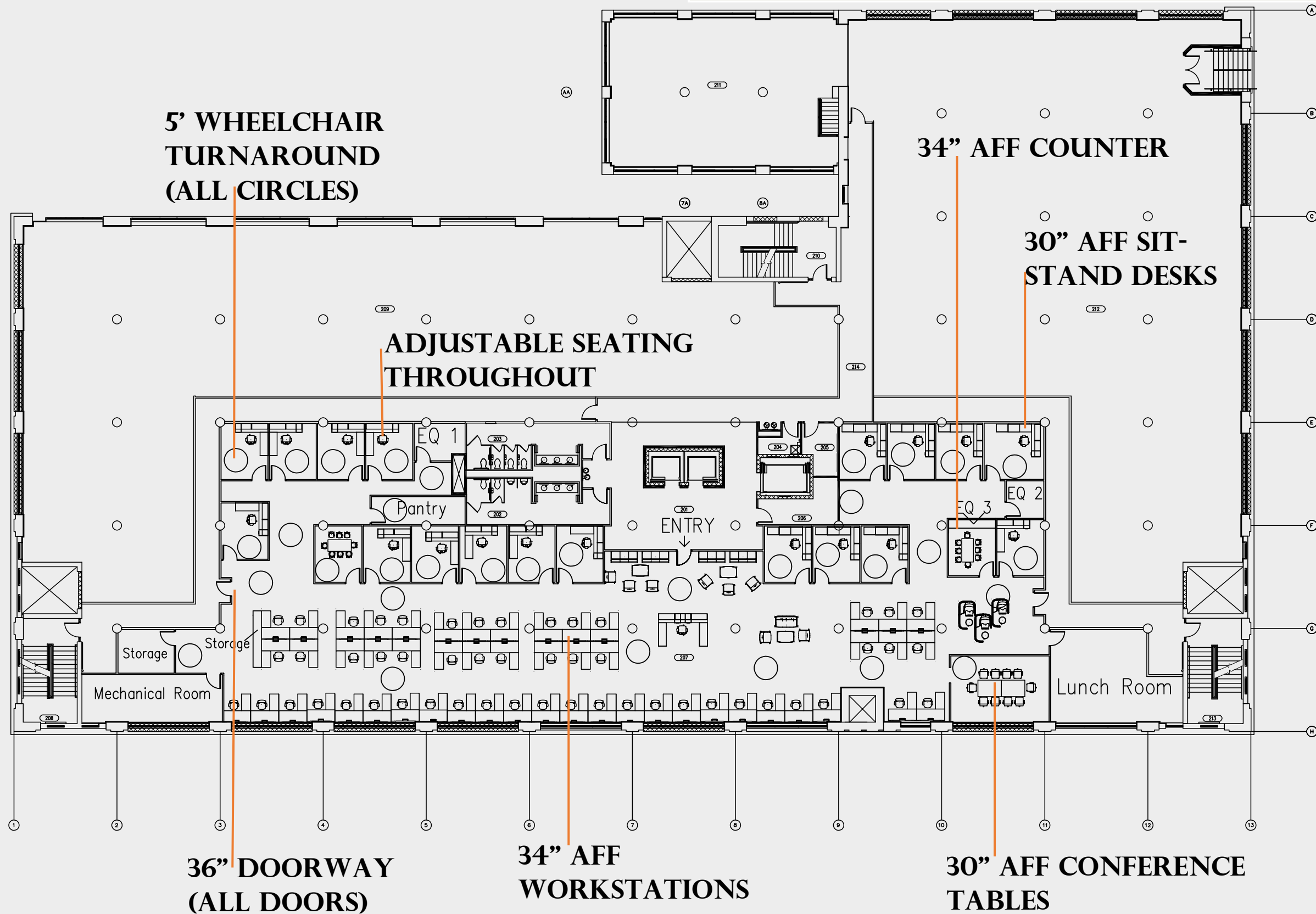
- ❖ ANTHROPOMETRIC INFORMATION USED IN FINALIZING THE DESIGN:
  - THE OPEN WORK AREA AND PRIVATE OFFICES HAVE SIT-STAND WORKSURFACES TO REDUCE BACK PAIN AND EXCESSIVE STRAIN
  - THE SPACE ALLOWS FOR PERIODIC BREAKS FOR STRETCHING AND RELAXATION WITH DIFFERENT SEATING AREA OPTIONS
- ❖ THE HEIGHT OF THE STANDARD WRITING SURFACE RANGES FROM 30-34" AFF TO ALLOW FOR A WHEELCHAIR TO FIT COMFORTABLY UNDER THE SURFACE
- ❖ THE HEIGHT OF THE BARRIER-FREE HANDRAIL IS 33" FROM THE TOP OF NOSING
- ❖ A FEW ERGONOMIC CONSIDERATIONS DICTATED THE CHOICE OF TASK SEATING FOR THE SPACES INCLUDING:
  - THE SEAT HEIGHT IS EASILY ADJUSTABLE WITH AN ADJUSTMENT LEVER
  - THE SEATS ARE AN ARM'S LENGTH AWAY FROM SURFACES TO AVOID EXCESSIVE REACHING
  - THE SEAT HAS ENOUGH WIDTH AND DEPTH TO SUPPORT ANYONE COMFORTABLY
  - THE SEAT ADJUSTABILITY ALLOWS FOR ALL USERS TO BE EYE LEVEL WITH THEIR WORK TO PREVENT STRAIN





# ANTHROPOMETRIC & ERGONOMIC FEATURES

\*NOT TO SCALE



# USER CHALLENGES

WITH THE USE OF COLORS THAT SURROUND THE CITY, USERS WILL FEEL DRAWN TO THE FAMILIAR AND RELAXED ENVIRONMENT THE SPACE BRINGS



THROUGH UTILIZING THE HISTORIC ELEMENTS OF TOBACCO ROW, USERS OF ALL AGES AND BACKGROUNDS WILL FEEL CONNECTED TO THE SPACE AND THOSE AROUND THEM AS THEY SOAK IN A PART OF RICHMOND'S HISTORY



THE SPACE OFFERS SEVERAL AREAS TO COLLABORATE WITH OTHERS IN ADDITION TO AREAS FOR PRIVACY AND UNINTERRUPTED WORK

