

Portfolio One

3202 Interior Design Studio IV

Spring 2020

Caroline Peebles

Edgeworth Building

History

- ❖ 1925 WRVA radio station broadcasted from their studio inside the Edgeworth building
- ❖ The surrounding area was vacated by most tobacco company's in the late 1980's
- ❖ 1/3rd of cigarettes produced in the U.S. came from Tobacco Row's warehouses
- ❖ In the 1940's, manufacturers produced over 100 billion cigarettes annually. This made Richmond the largest cigarette making facilities in the U.S.



Edgeworth Building

Existing

- ❖ The Edgeworth building is currently a commercial office property
- ❖ Other buildings on Tobacco Row have been transformed into luxury lofts
- ❖ Each building is composed of historic architecture with industrial elements
- ❖ Concrete construction
- ❖ Large window walls





Edgeworth Building

Stakeholder Profile

Client: Forest City Enterprises

- ❖ Quality design
- ❖ Planning
- ❖ Strong design presentations
- ❖ Solid budget management

Owner: Forest City Enterprises

- ❖ Budgeting
- ❖ Branding
- ❖ Quality design

User: Co-working individuals

- ❖ Function
- ❖ Sensible flow
- ❖ Quality furniture
- ❖ Office theme
- ❖ Sensible design presentation



Edgeworth Building

Site Profile

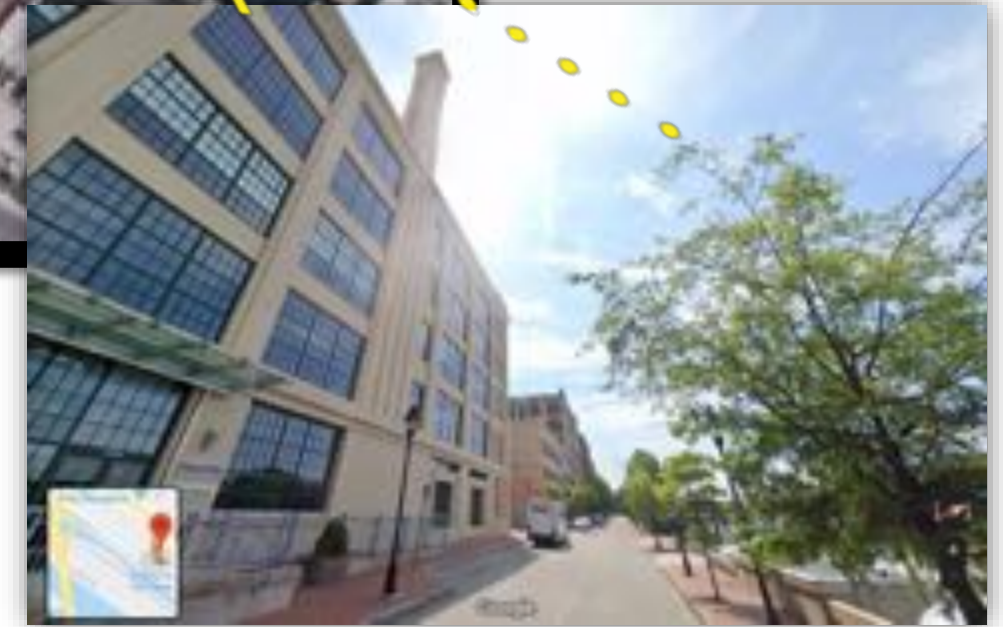
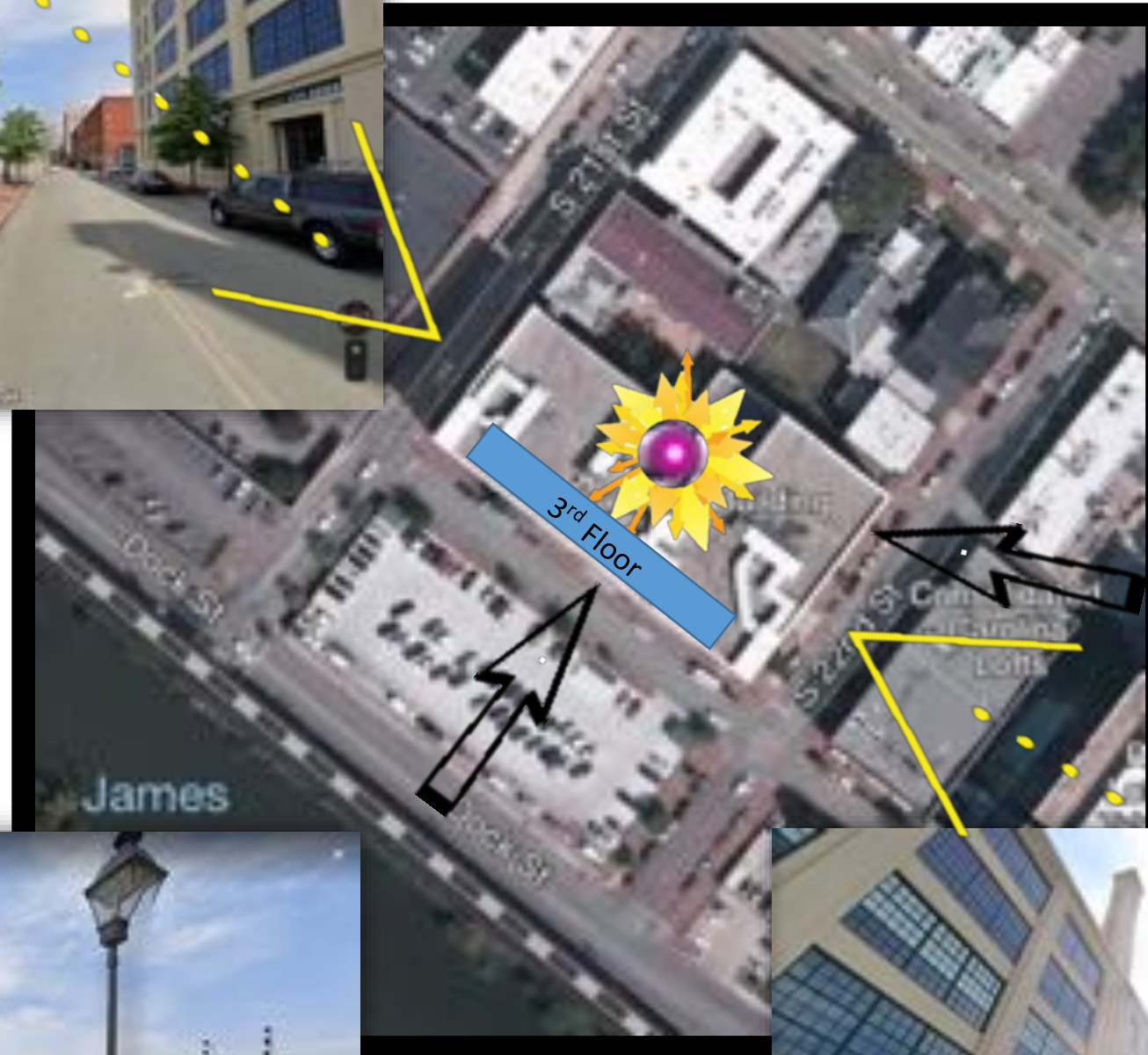
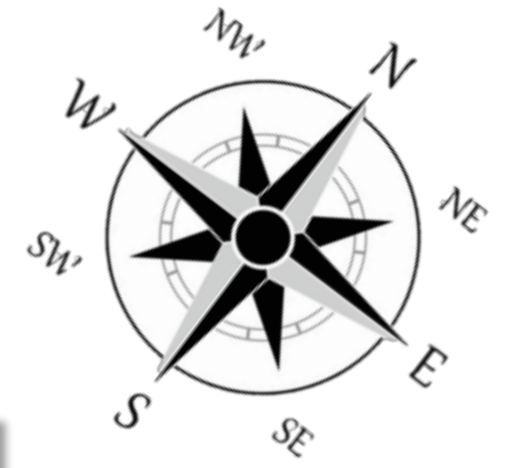
The **Edgeworth Building** is located at 2100 East Cary Street in the Shockoe Bottom neighborhood **Richmond, VA 23223.**

❖ SF: 10,000



Edgeworth Building

Site Analysis



Historic Overhaul

- Historic Richmond, VA real estate displayed visually throughout the office space along with current office projects
- Overhaul: take apart in order to examine it and repair if necessary
- Real Estate Entrepreneur: someone who invests in real estate and may make repairs and/or improvements





History



Space Program

PERSONNEL AND WORK SPACES

PERSONNEL

Position	Personnel Totals		Unit Square Ft.		Extended Sq. Feet	Equipment			Notes
	Current	Future	Office	Workstation		PC	Printer	Fax	
Director		5	120		300		1		
Manager		10	120		1200	2	1		
Assistant Manager		10		30	300				
Administrative Assistant		5		30	150	1	1		
Tech Assistant		20		30	600	2	0		
Assistant		12		30	420				
Personnel Totals:	5	75			4000	8	11	0	

Department Summary	
Personnel	4000 Square Ft.
Work	400 Square Ft.
Support	2200 Square Ft.
Sub Total	6700 Square Ft.
Overhead	154
Total Available	6854 Square Ft.

WORK SPACES

Space	Support/Equipment		Unit Square Feet	Extended Sq. Feet	Location	Notes
	Current	Future				
Concise Lounge		0		0		
Open Work Area		0	400	400	Adjacent to Teams	Work counters
Storage		0	200	0	Next to Open Work Area	Shelving
Support Totals:				400		

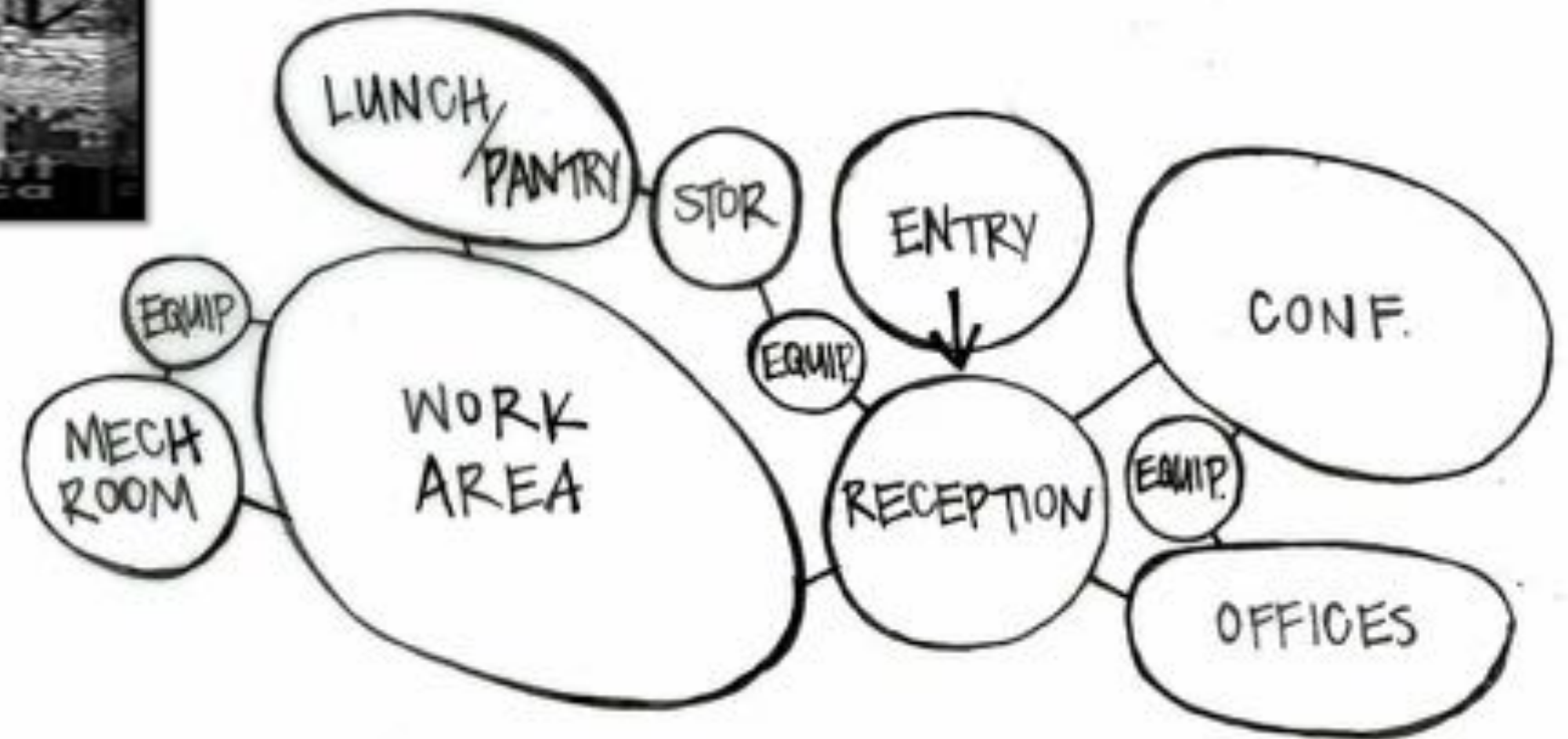
Interviews:	
Interview Date:	
Revision Submitted:	
Sign Off:	

SUPPORT/EQUIPMENT SPACES

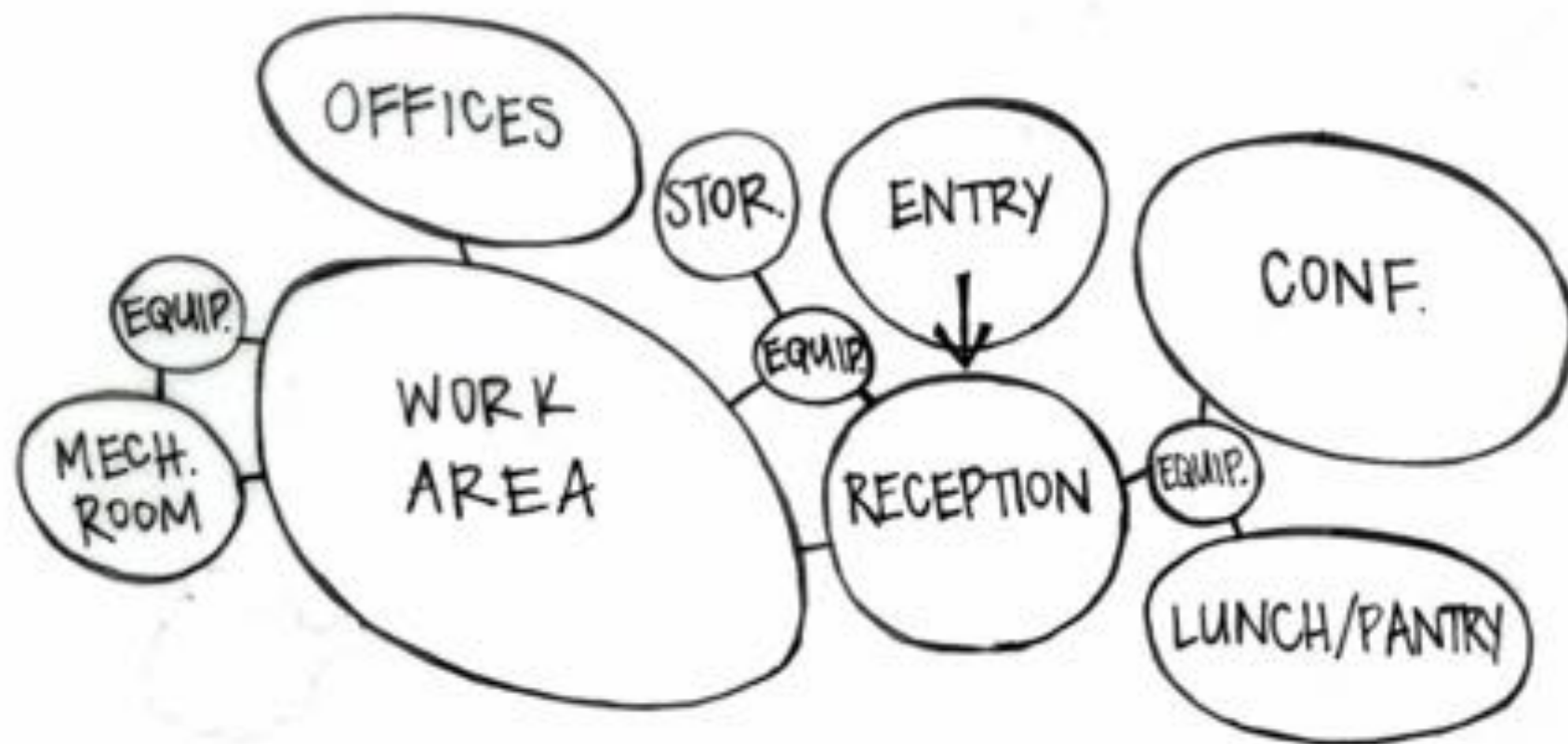
Space	Support/Equipment		Unit Square Feet	Extended Sq. Feet	Location	Notes
	Current	Future				
Reception		0	500	500	Direct access to Entrance and Large Conference	Waiting for 6 TV's
Large Conference Room		0	300	300	Next to Reception	Fyl Air
Conference Room		0	120	120	Shared by all areas	Fyl Air
Computer Service Area		0	80	0		Work counter, outlets
Computer Server Room		0	80	0		Raised floor, secure, 2 racks
Equipment Station		0	64	192	Shared throughout	Printers, shredder, work counter
Pantry		0	120	240	Shared throughout	Coffee, w/m, refrigerator, cabinets
Lunch Room		0	400	400		Fyl filtered, smoking
Storage		0	120	120		
Coats		0	1	0	Shared throughout	
Mechanical Room		0	500	500	Near front building at supply	Supplemental Air
File Drawers		0	2	0	Shared throughout	
Support Totals:		0		2700		

Department Notes:

Bubble Diagrams

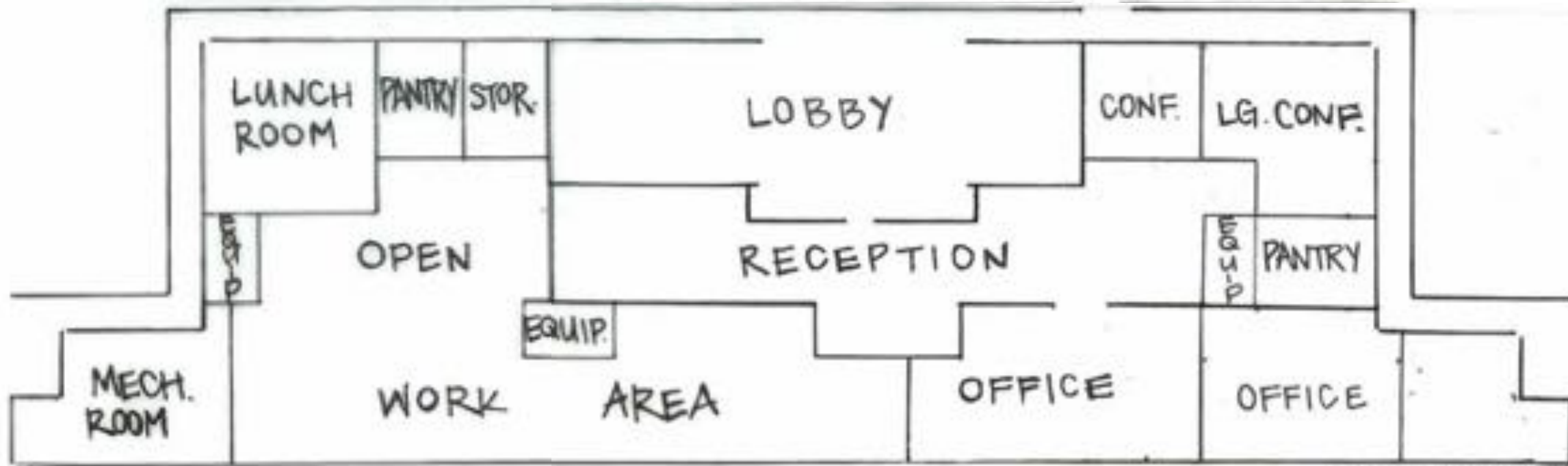


BUBBLE 1

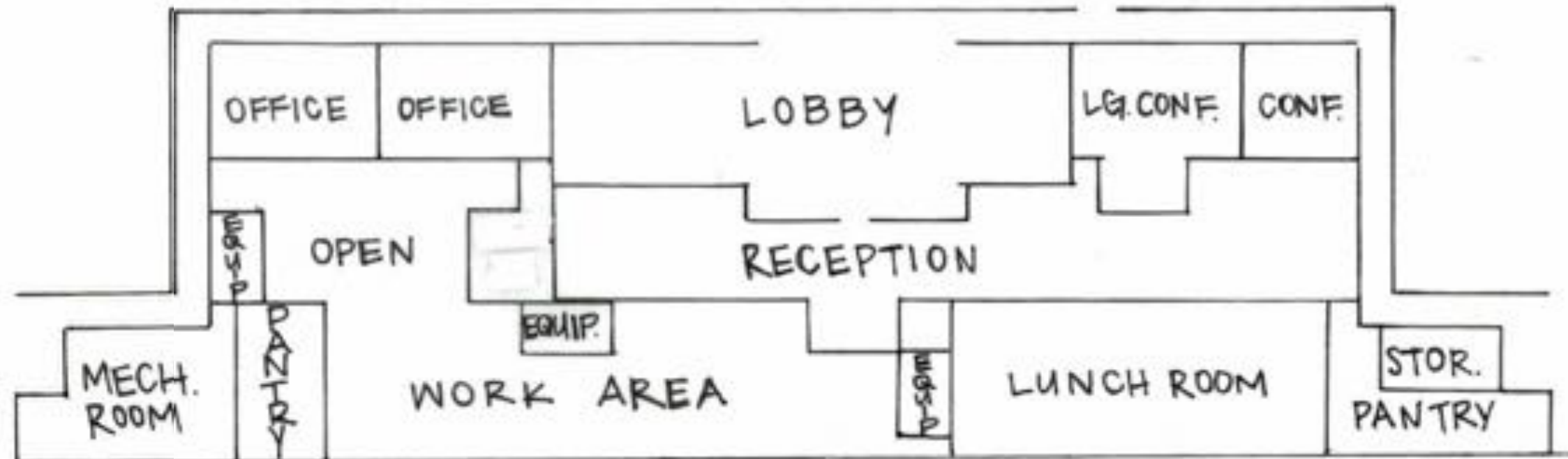


BUBBLE 2

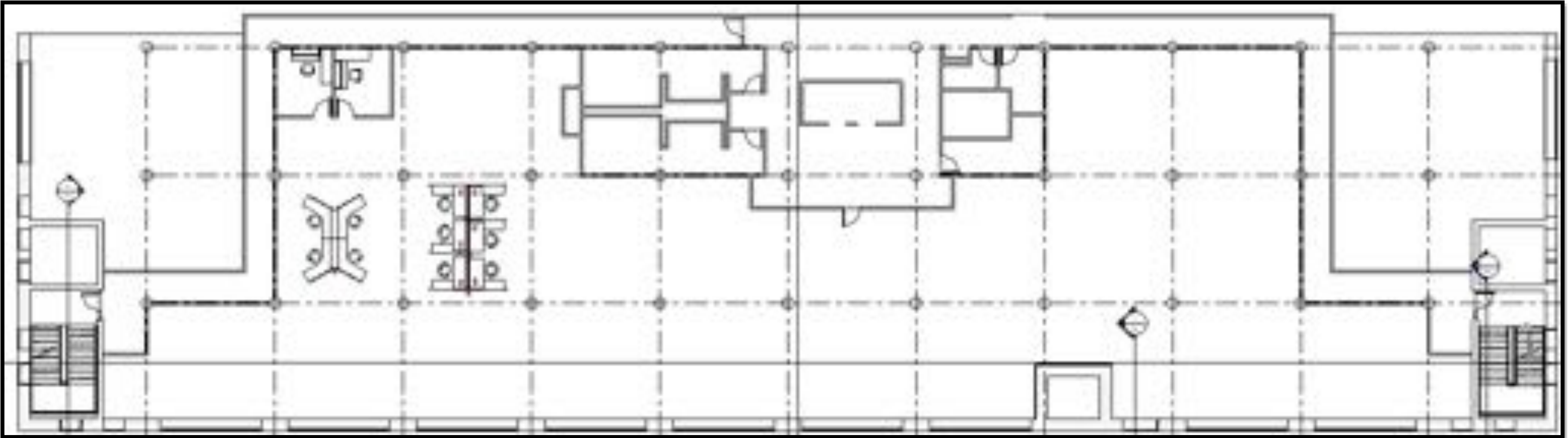
Blocking Diagrams



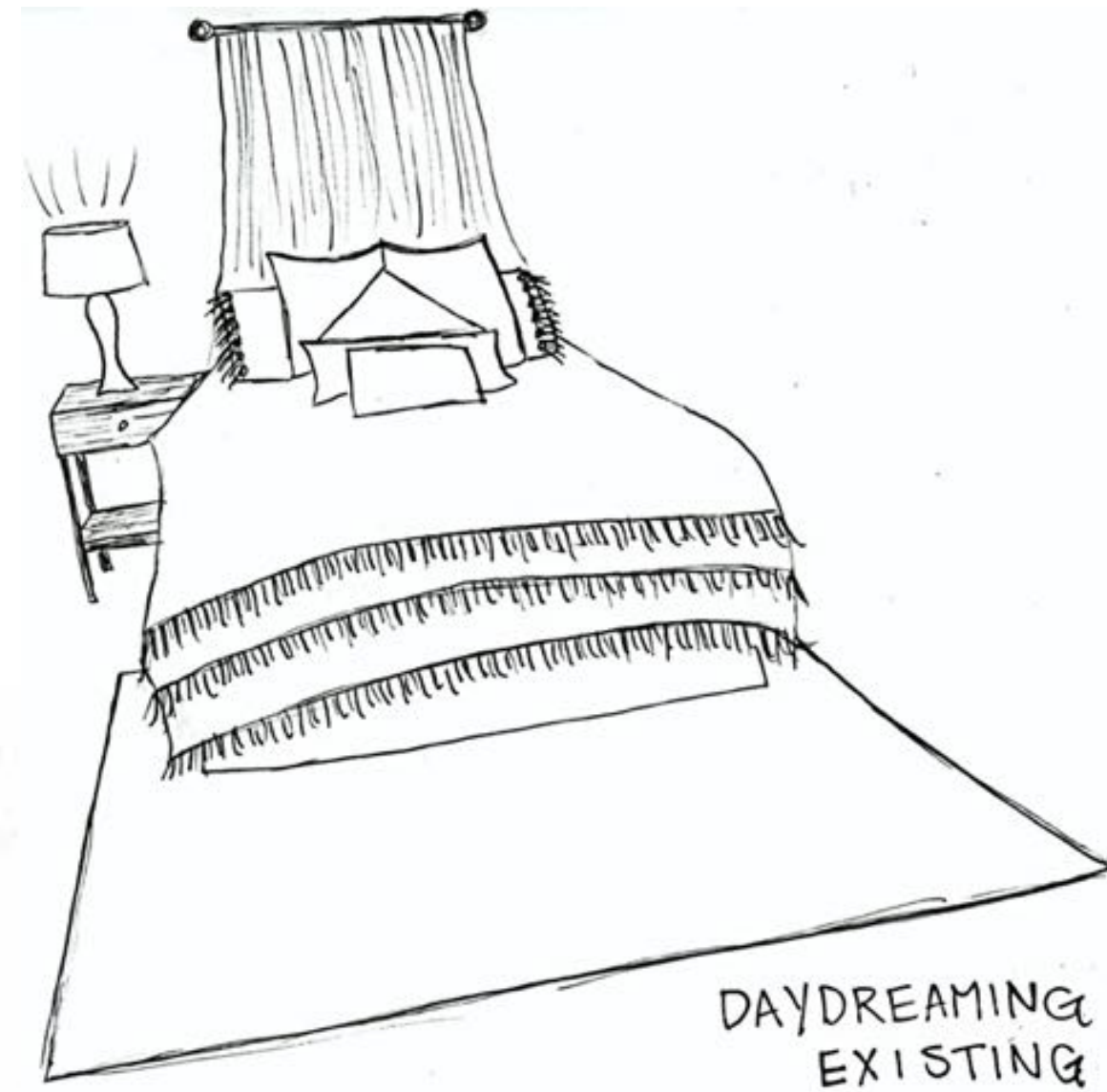
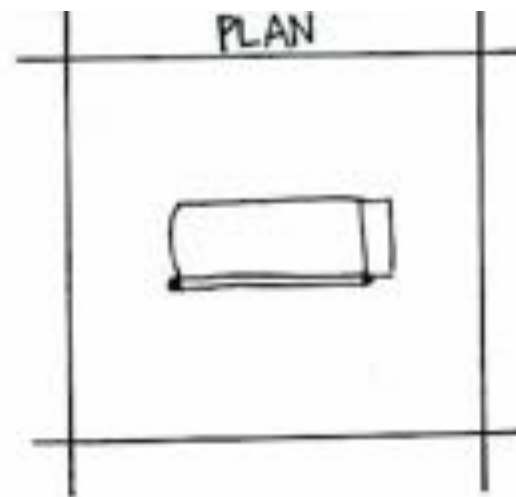
BLOCKING 1



BLOCKING 2



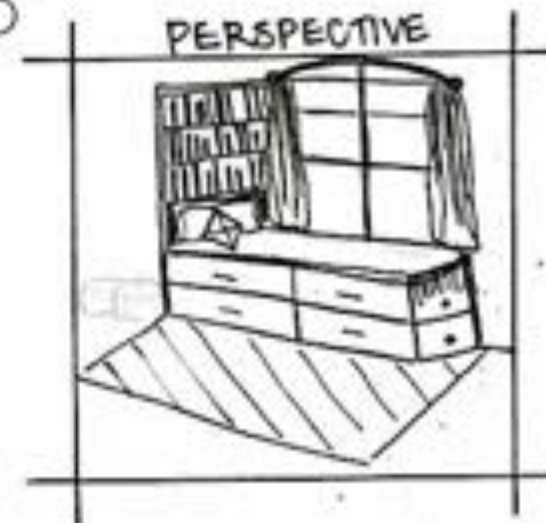
Activity Space Studies



DAYDREAMING
EXISTING



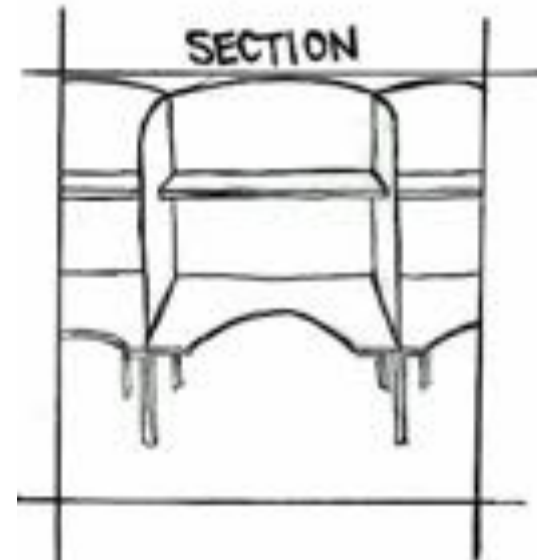
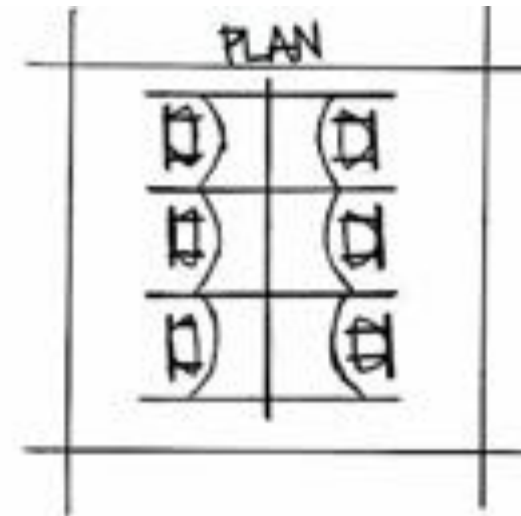
DAYDREAMING
PROPOSED



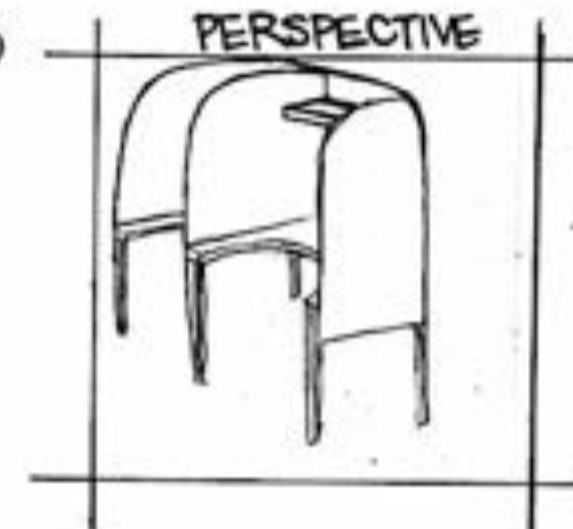
Activity Space Studies



INTENSE FOCUS
WORK
EXISTING



INTENSE FOCUS
WORK
PROPOSED



Activity Space Studies



DIFFUSE FOCUS
WORK
EXISTING

PLAN



DIFFUSE FOCUS
WORK
PROPOSED

SECTION



PERSPECTIVE

