

# PORTFOLIO THREE

IDSN 3202  
SPRING 2020  
CAROLINE PEEBLES



# COLOR RATIONALE

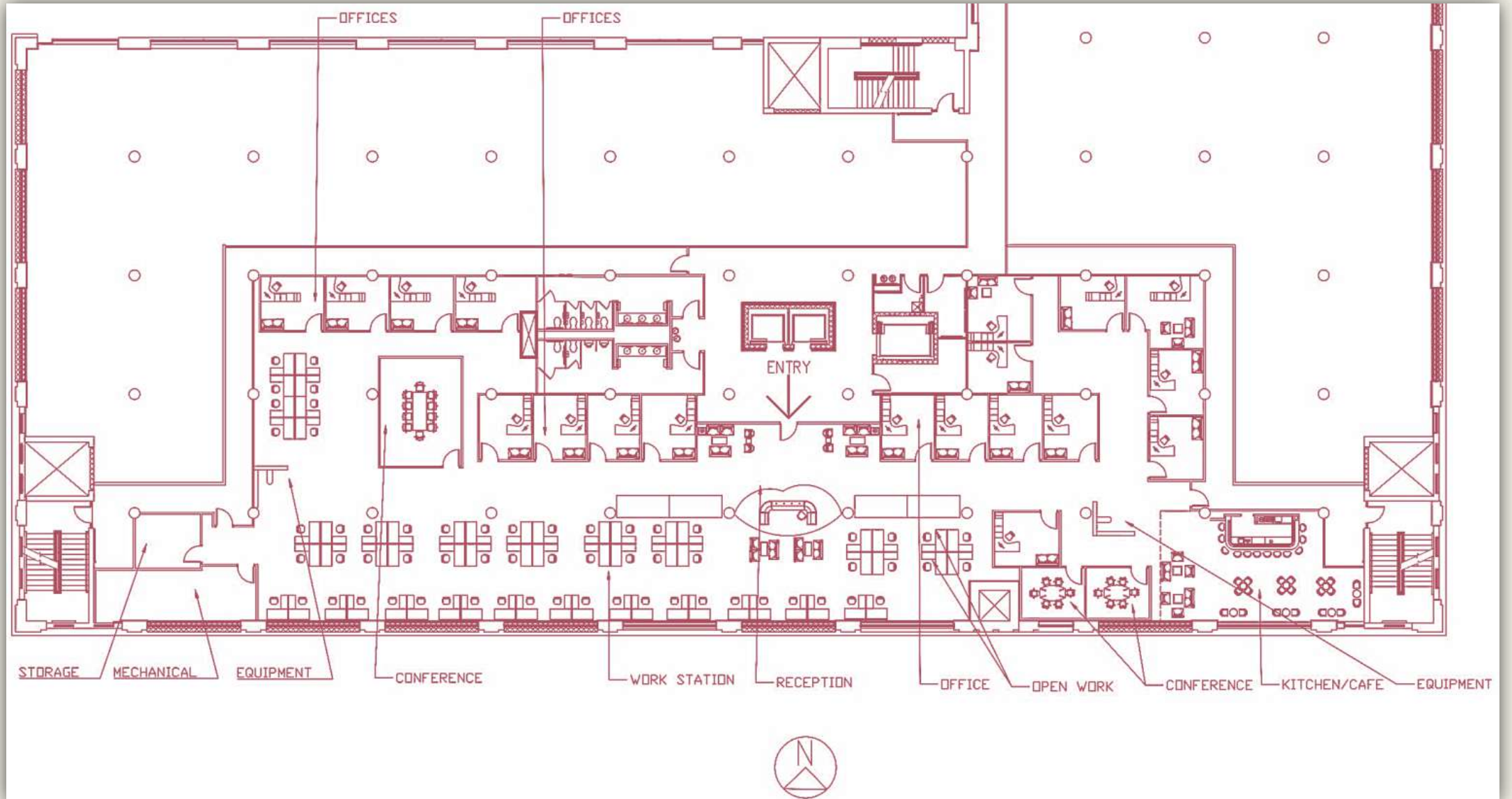
- Inspired by the James River Railway Bridge & the vast array of colorful historic architecture seen around Richmond, VA
- Wooden tones & textures are pulled from the railway bridge as well as neutral colors from the surrounding James River
- Pops of color seen on homes in the historic district & colorful lights from the nighttime Richmond skyline are influencers as well



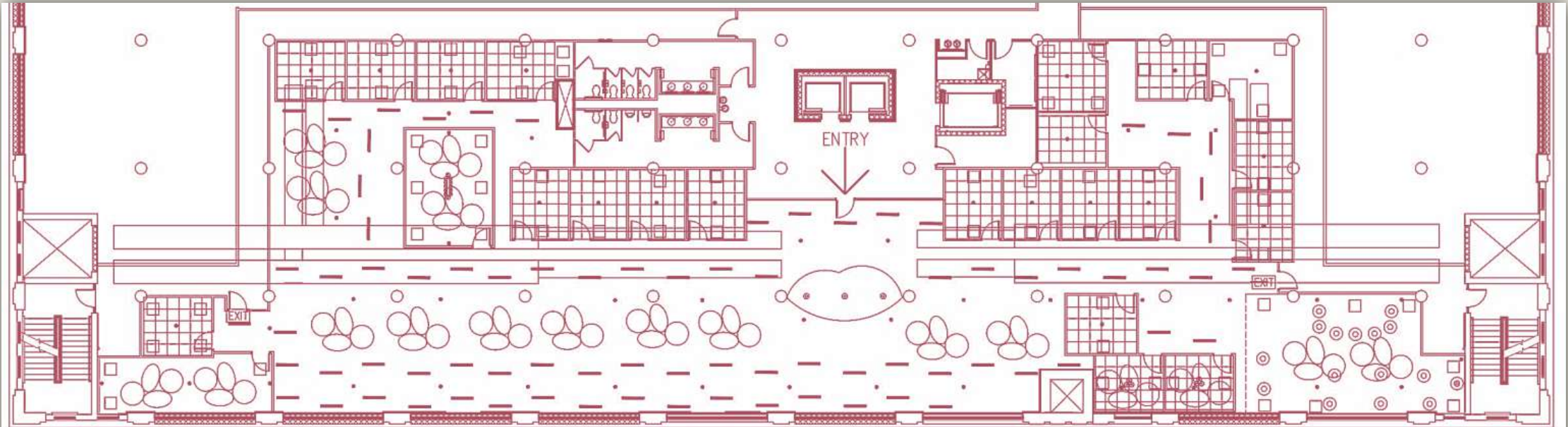
# ANTHROPOMETRIC & ERGONOMICS



# FURNITURE PLAN



# REFLECTED CEILING PLAN

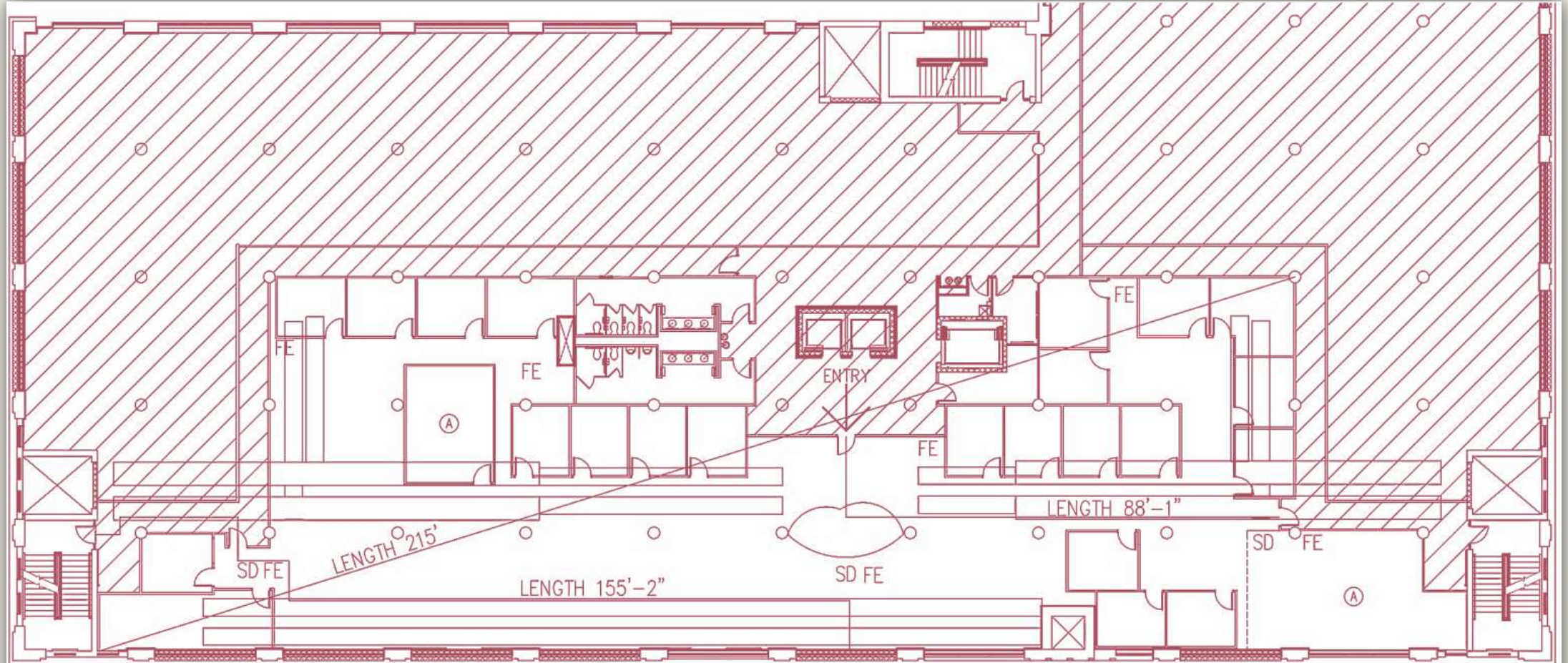


## RCP LIGHTING SYMBOLS

- ⊙ Pendant
- Task Lighting [LED]
- ⌚ Task Pendant
- Task
- Sprinkler
- Acoustical Drop Tiles
- 2x2 Drop Lights
- ▣ 2x2 Ceiling tiles



# LIFE SAFETY PLAN



LIFE SAFETY PLAN

- (A) ASSEMBLY
- FE FIRE EXTINGUISHER
- SD SMOKE DETECTOR
- ⊘ OUTSIDE WORK AREA

# LIFE SAFETY PLAN TABLE

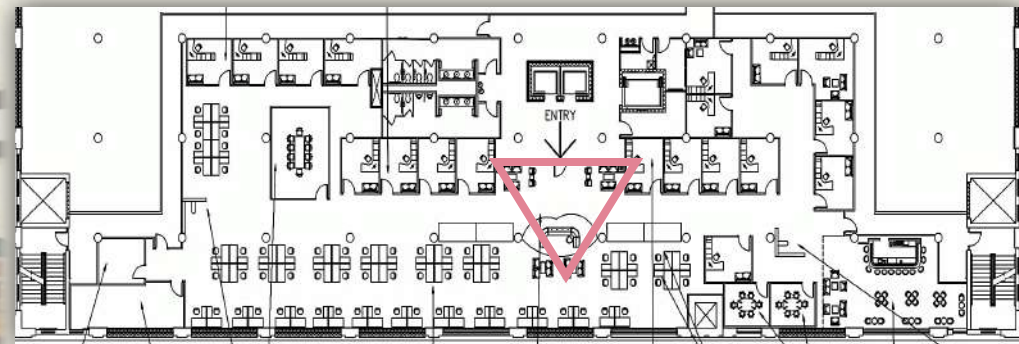
Building Construction and Occupancy									
Construction Type		Sprinklers?		Occupancy Type					
Type I		Yes		B					
Exit Requirements: Number and Arrangement of Exits									
Space Designation	# of Exits		Travel Distance		Arrangement: Means of Egress				
	Required	Shown on Plans	Allowable Distance	Actual Distance Shown on Plans	Req'd Distance Between Exits		Actual Distance Shown on Plans		
Suite 3100	2	2	300'-0"	155'	72'		215'		
Notes:									
Use Group or Space Designation	(A)	(B)	Calculated Occupant Load = A/B	©		Exit Width (Inches)			
	Area = Sq. Ft.	Area per Occupant		Egress per Occupant		Required Width = (A/B)xC		Actual Width	
				Stair	Level	Stair	Level	Stair	Level
Suite 3100	10,087	100	100	0.3"	0.2"	30"	20"	69"	60"

# SECTION





# RENDERED PERSPECTIVE +RECEPTION

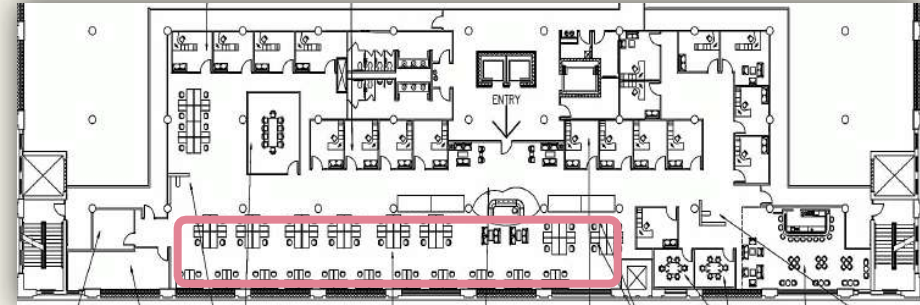


# FURNITURE & FINISHES

## +RECEPTION

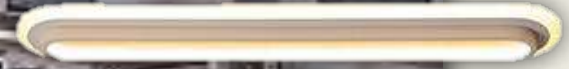
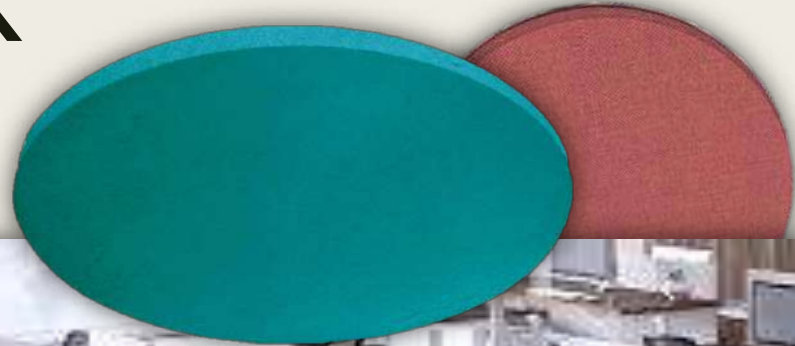


# RENDERED PERSPECTIVE +OPEN WORK

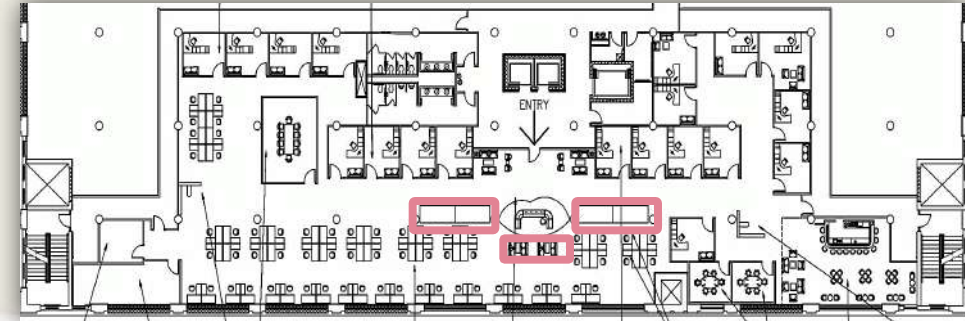


# FURNITURE & FINISHES

## +OPEN WORK



# RENDERED PERSPECTIVE +CONCEPT LOUNGE

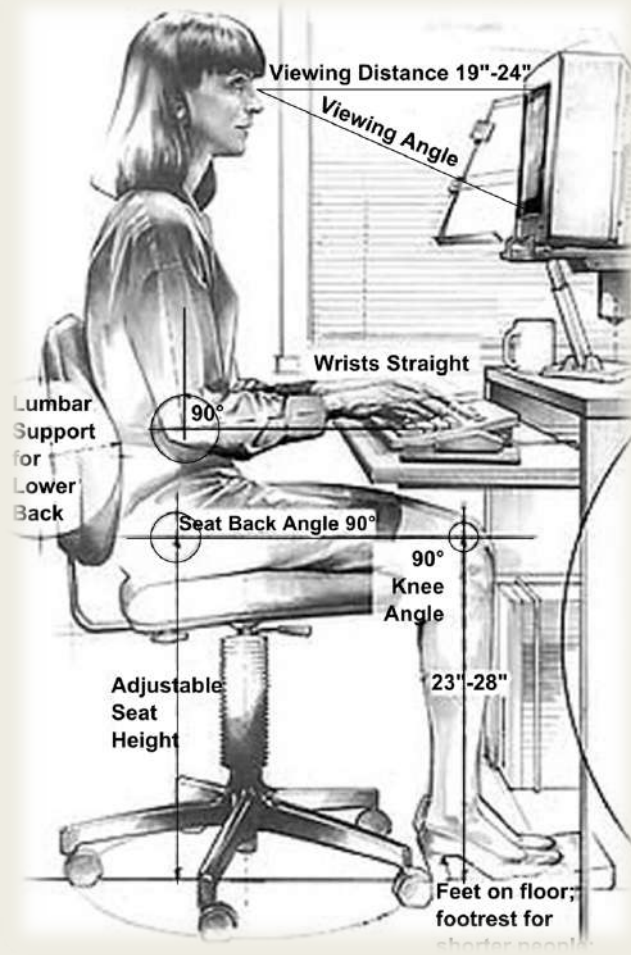


# FURNITURE & FINISHES

## +CONCEPT LOUNGE



# ERGONOMICS & ANTHROPOMETRICS



- Height adjustable desk systems offer comfort and support to users working long hours.



- Ergonomic desk chairs offer lumbar support & are adjustable for users of all heights.

# USER CHALLENGES



- With a wide variety of seating options, users of all ages will be able to find their perfect work space.



- The Historic Overhaul concept is fitting for any office in the Richmond area, because it is inclusive design. Residents of Richmond will feel at home no matter who they are collaborating with.



- The ideal user for this space will be drawn in by the comfortable seating features and a concept they understand and feel connected to.