

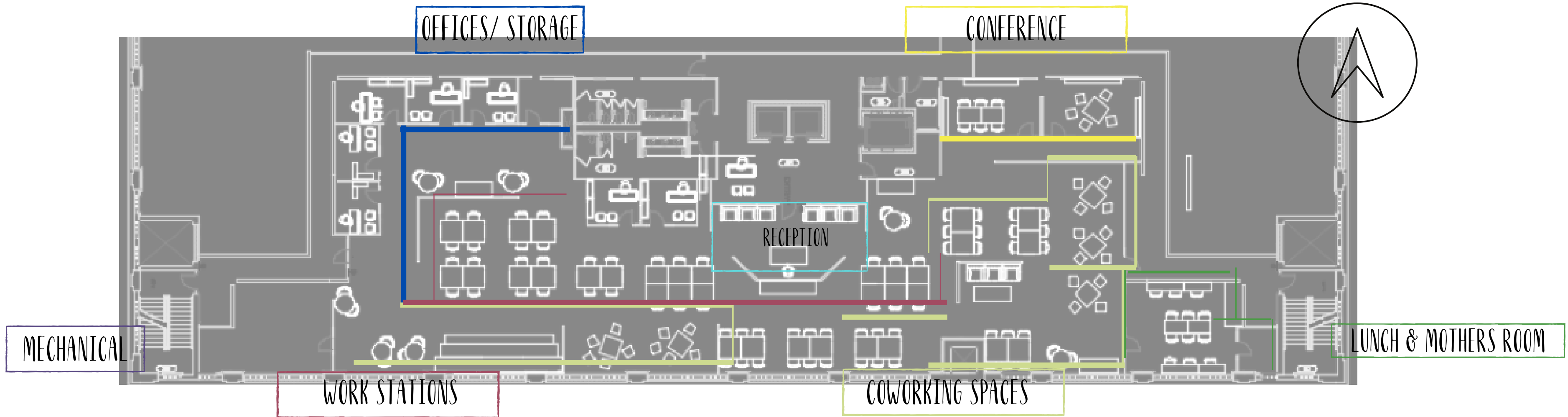


KAREN SANDOVAL // 3202

03

Edgeworth Office Building

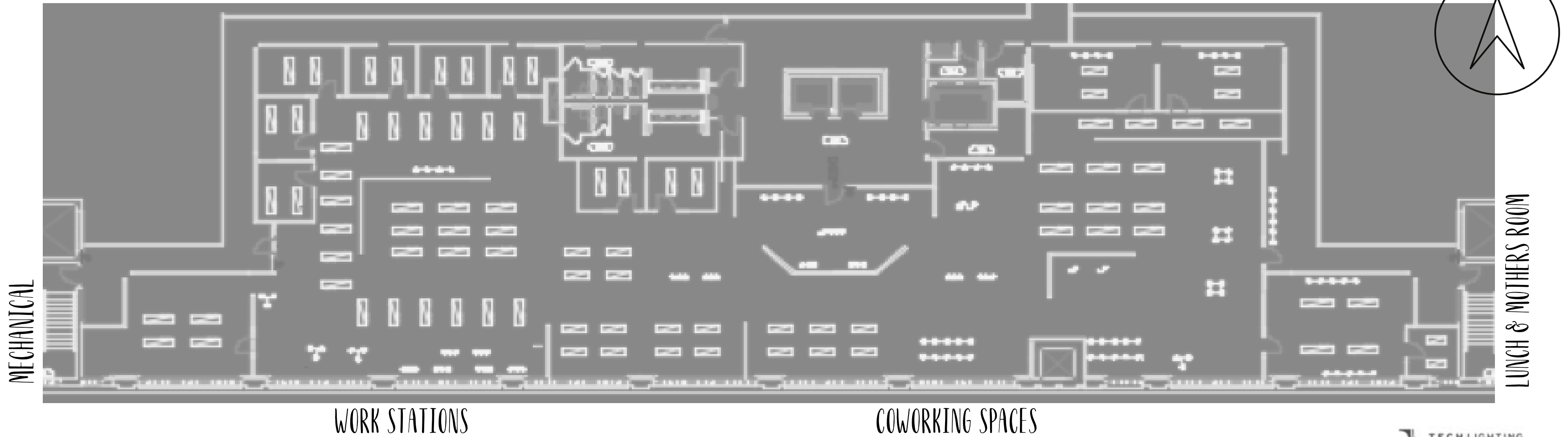
Furniture Plan



RCP // Lighting Plan

OFFICES/ STORAGE

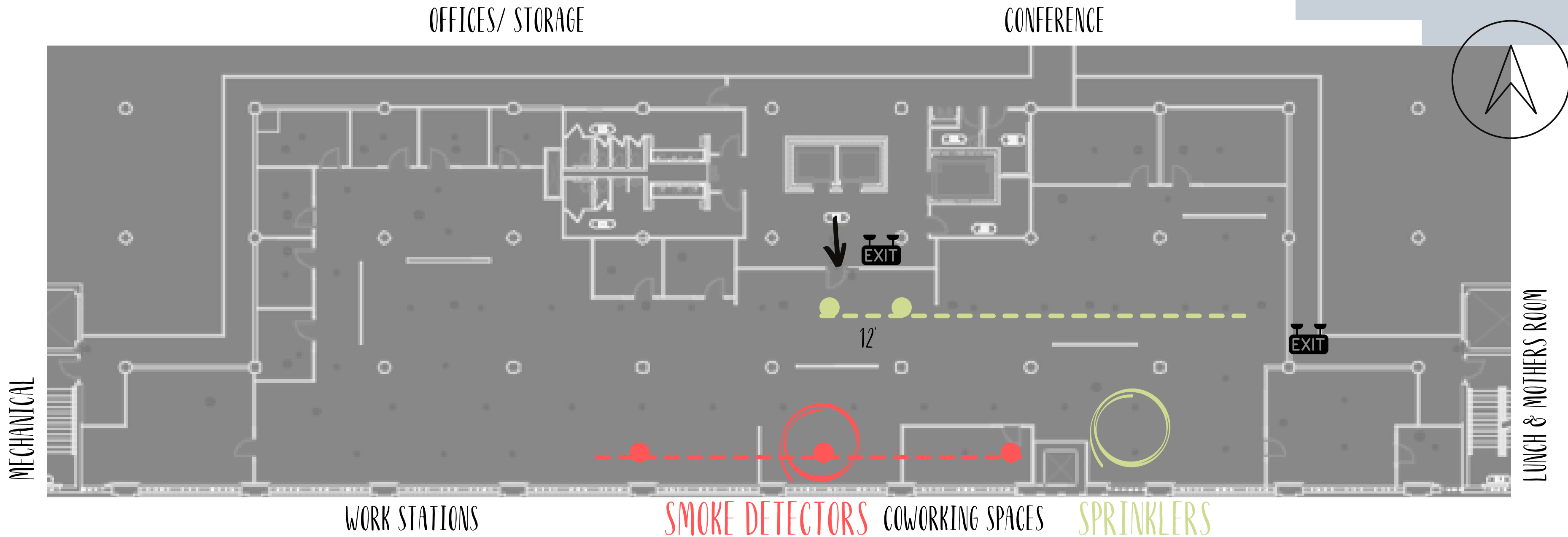
CONFERENCE



- A mixture of NUVO & TECH Lighting is used throughout the space. With 3500 Lumens, these LED lighting features will properly light the office space.
- Pendant Lighting is used in lounge areas and as wall washers to create an inviting space.



RCP



- Smoke detectors are placed in each room and throughout the various areas of this part of the building.
- Sprinklers are depicted as the smaller dots on the plan. These sprinklers are 12' apart and cover the entire floor plan of the this part of the building to ensure maximum fire safety.

Life Safety Plan



Life Safety Table

Building Construction and Occupancy									
Construction Type		Sprinklers?		Occupancy Type					
Type I		Yes		B					
Exit Requirements: Number and Arrangement of Exits									
Space Designation	# of Exits		Travel Distance		Arrangement: Means of Egress				
	Required	Shown on Plans	Allowable Distance	Actual Distance Shown on Plans	Req'd Distance Between Exits		Actual Distance Shown on Plans		
Suite 3100	2	2	300'-0"	190' 9"	71'		169'		
Notes:									
Use Group or Space Designation	(A)	(B)	Calculated Occupant Load = A/B	⊙		Exit Width (Inches)			
	Area = Sq. Ft.	Area per Occupant		Egress per Occupant		Required Width = (A/B)xC		Actual Width	
				Stair	Level	Stair	Level	Stair	Level
Suite 3100	10,087	100	100	.3"	.2"	30"	20"	48"	60"
Notes:									

EW Section

OFFICE WING

RECEPTION

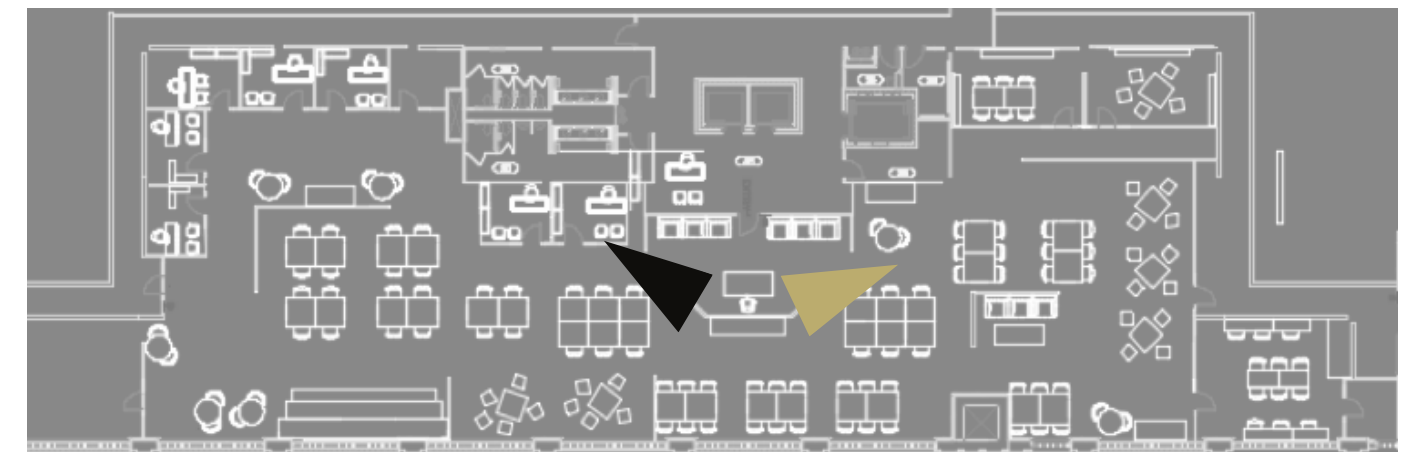
CONFERENCE ROOMS



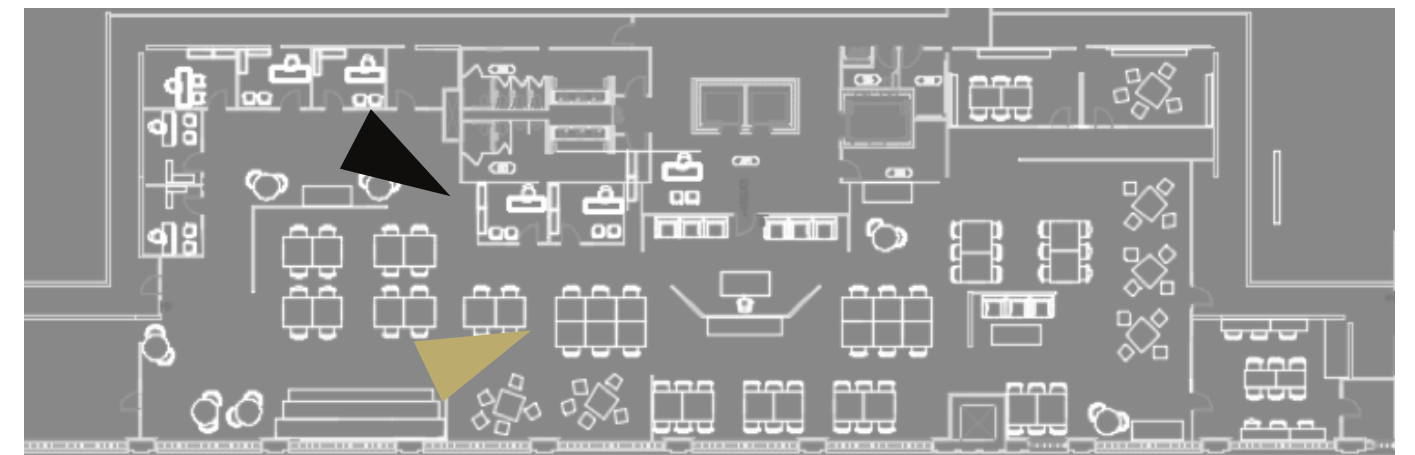
LUNCH & MOTHERS ROOM

COWORKING SPACES

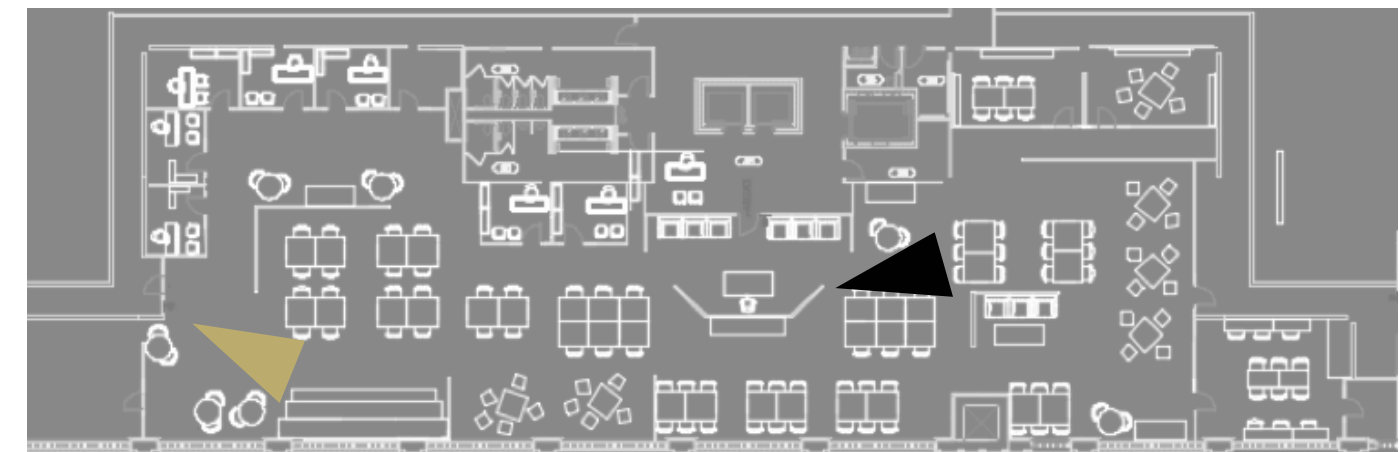
Rendered Perspectives: Reception



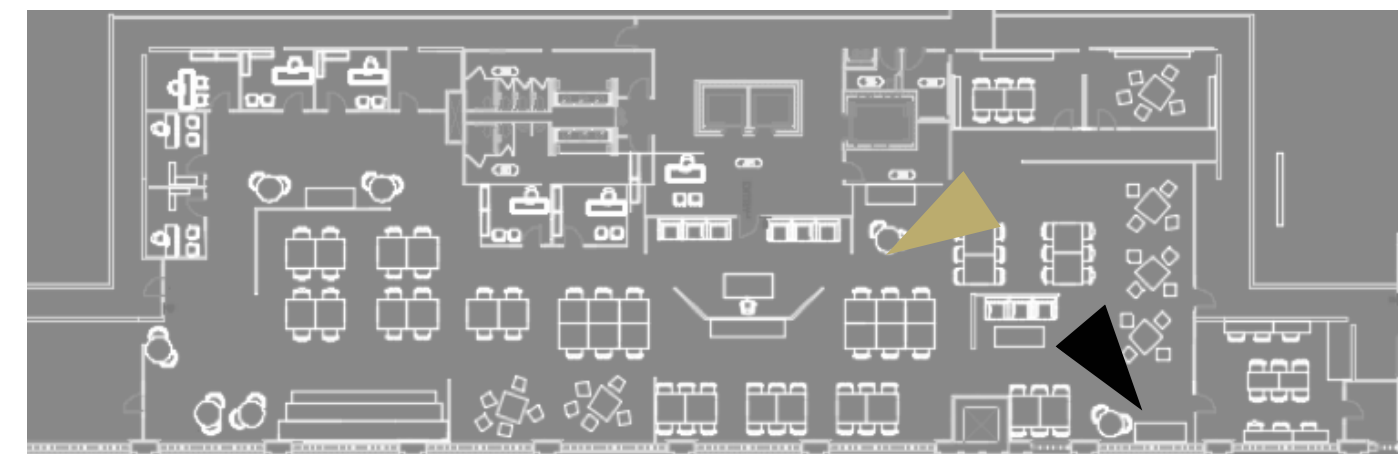
Rendered Perspectives: Workspaces



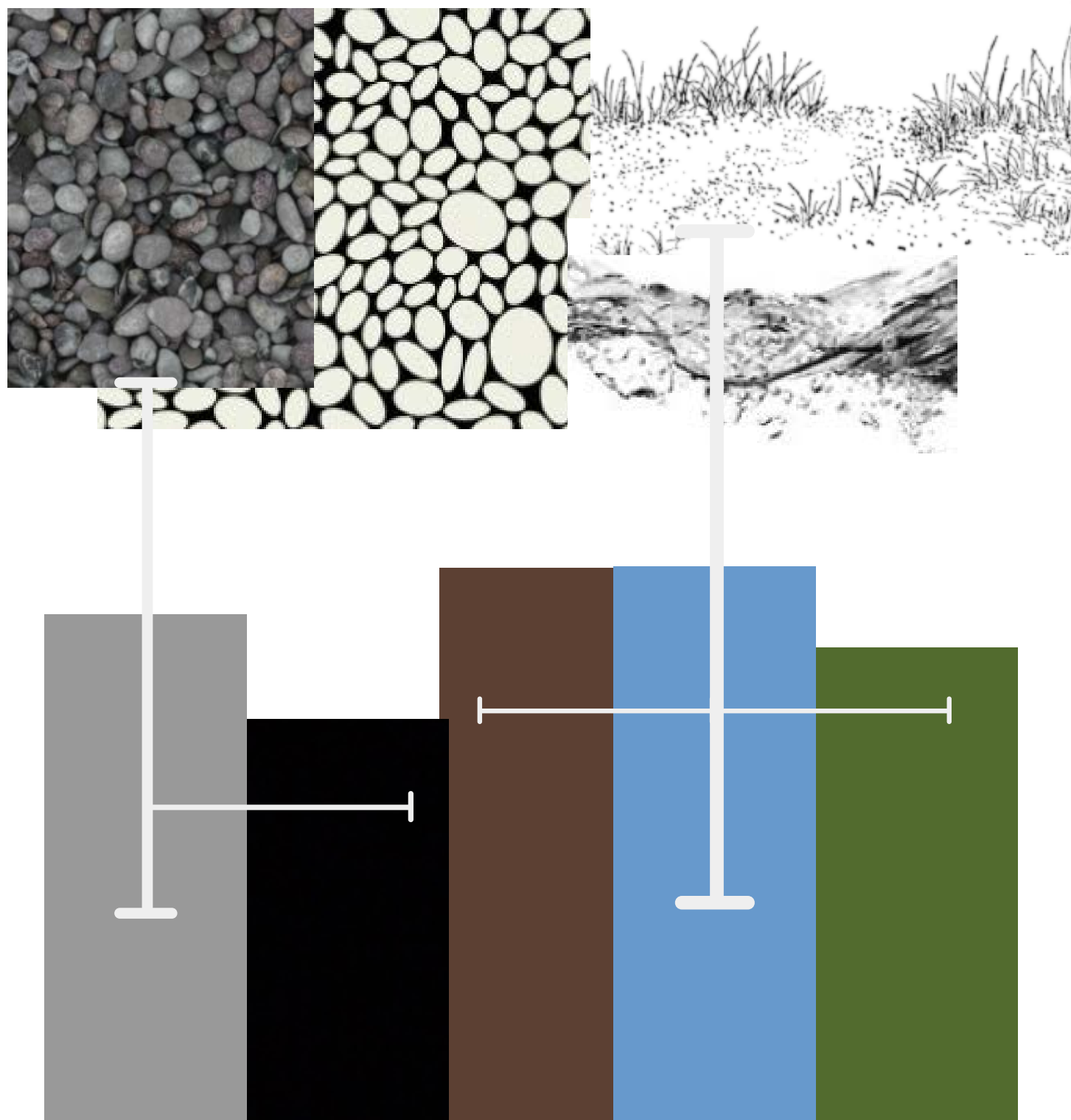
Rendered Perspectives: Collaborative Workspaces



Rendered Perspectives: Collaborative Workspaces



Color Rationale



- The color rationale in this space strives to support the concept of "Renowned Riverside." This office space will provide users with a welcoming and calming environment.
- Blues, greens and grays are used to pull in the elements from the riverside palette that one will see when visiting this part of Virginia.

Furniture & Finishes: Reception

Green Wall



Glass Dividers



Reception Desk



Seating



Materials



Flooring

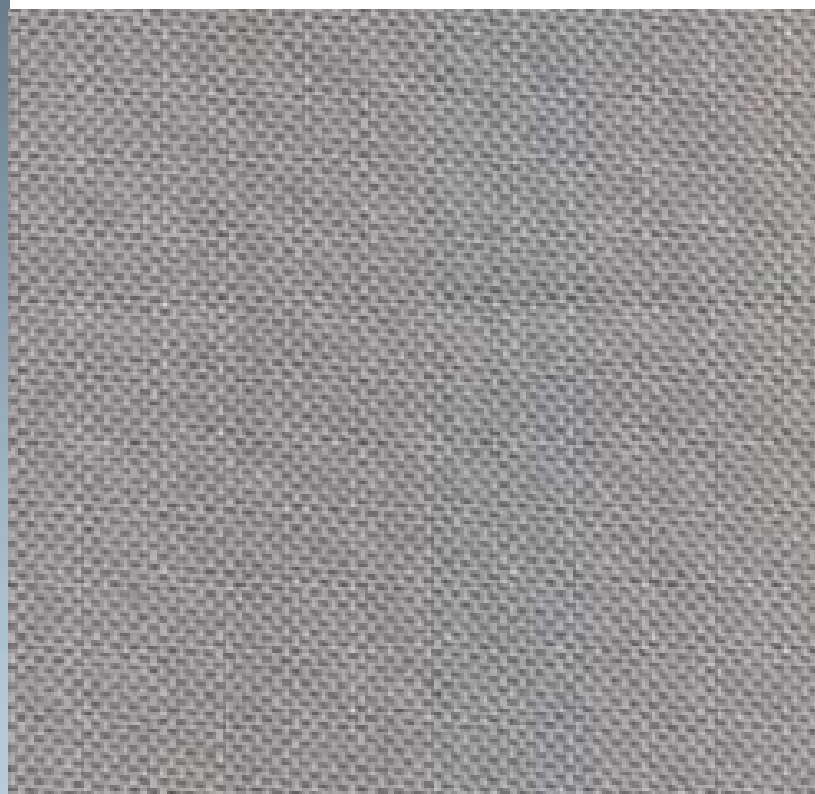


Furniture & Finishes: Offices

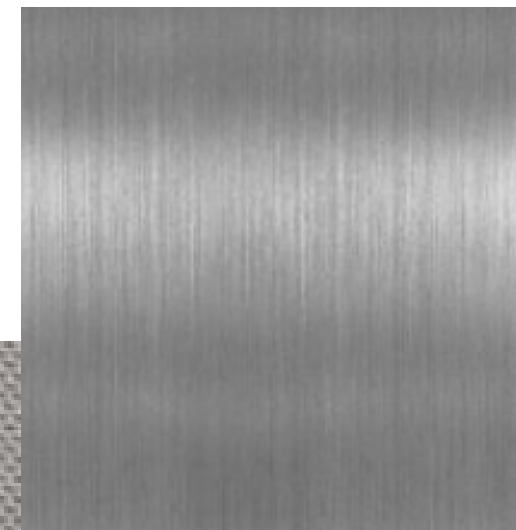
Glass Walls



Guest Chairs



Desk



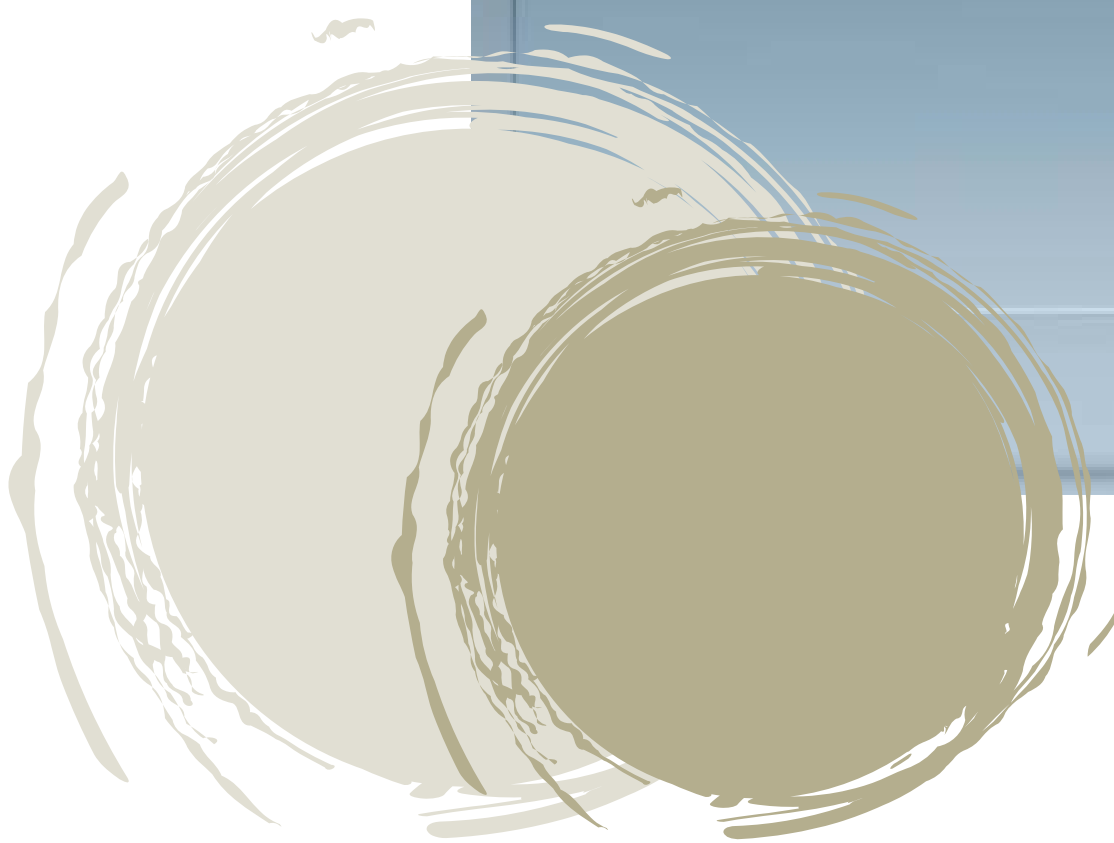
Seating



Materials



Flooring



Furniture & Finishes: Work Space

Work Dividers

Desk

Seating

Flooring



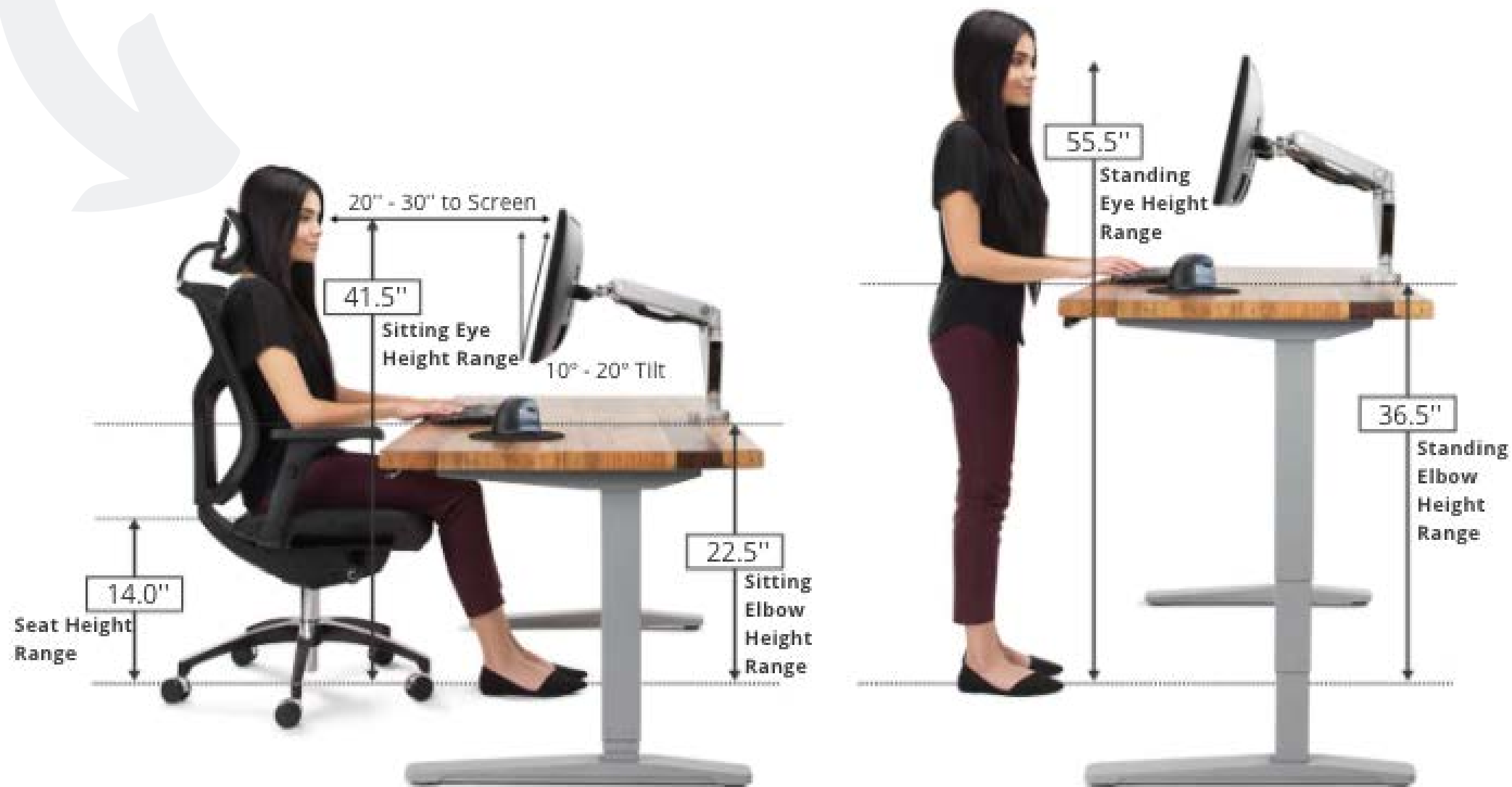
Materials

Carpet Tile

Anthropometric & Ergonomic Features

Where was Anthropometric features used? Height adjustable desks, chairs and meeting tables.

Ex. ideal anthropometric measures of a woman who is 5'.



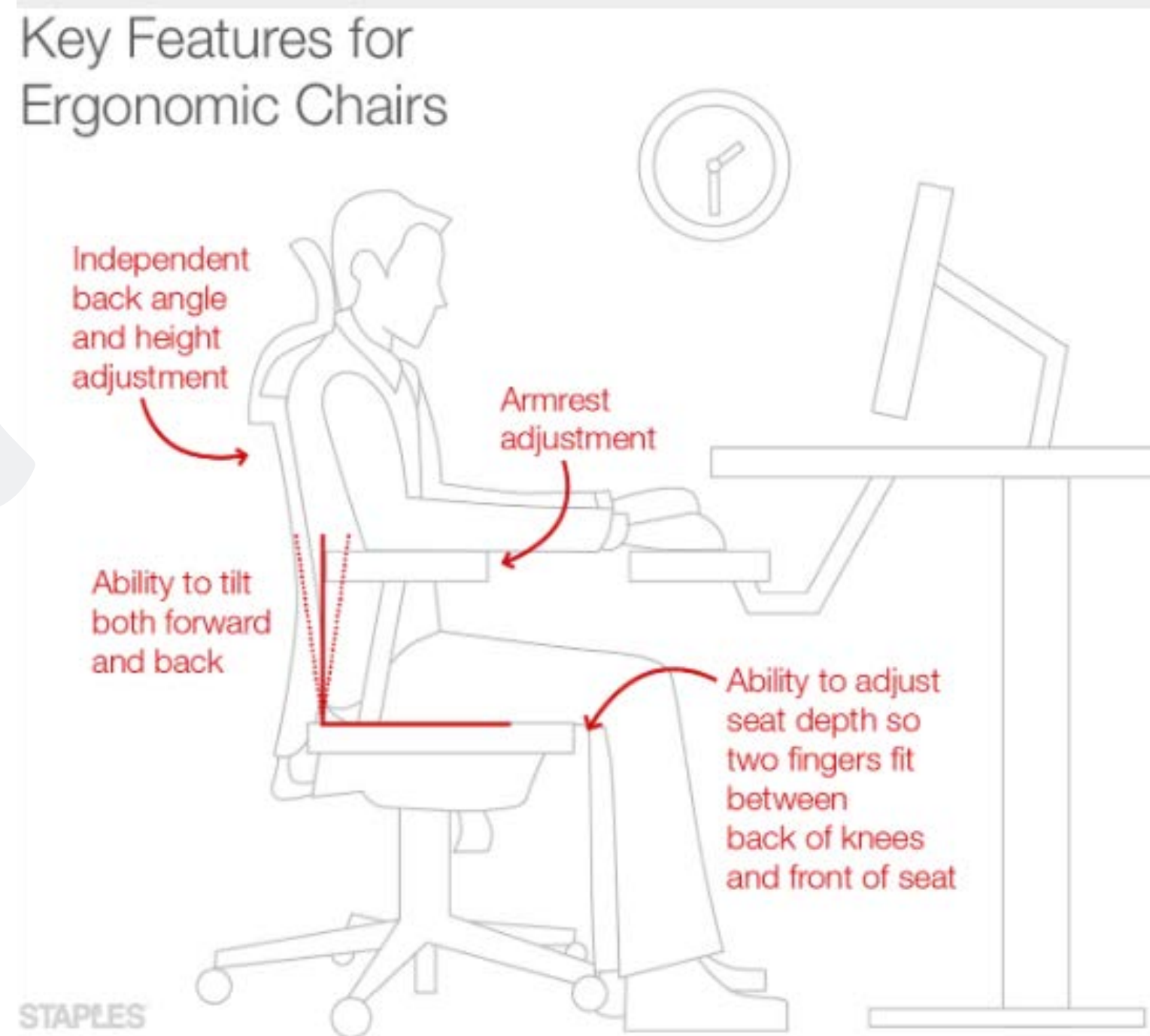
**HEIGHT OF
BARRIER-FREE
RAILING?**

38"

**THIS SPACE GIVES USERS
HEALTHY WORK FEATURES
AND A VARIETY OF
SEATING/ WORK AREAS TO
ENSURE COMFORTABILITY
IN THE WORKPLACE.**

Anthropometric & Ergonomic Features

What Ergonomic considerations dictated the choice of task seating for the spaces?



Providing ergonomic chairs in areas of longer use. The chairs located in the collaborative work spaces are not 100% ergonomic but still support the lower back area.

DISTANCE OF MONITOR?

20 - 40" AWAY FROM EYES

HEIGHT RANGE OF STANDARD WRITING SURFACE?

28" - 30"

User Challenges

Giving users various seating options to keep up and moving or rest

Plenty of work spaces near sunlight for those who find motivation with a view.

Reducing stress by creating different setting throughout the workplace.

Encouraging a collaborative workplace = effective understanding & communication



The African American culture has always been deeply connected to their history

Bright colors and bold graphics are heavily used/created by the African American Community

The Richmond area is known for the diversity and ever-changing ways to express art.

The setting of this office can attract young African American populations who look for progressive city

