



PART --- TWO

Paige S. Stark
Preliminary Schematics
IDSN 3202

CIRULATION PLANS



OPTION #1

Scale:

1/16" = 1'-0"

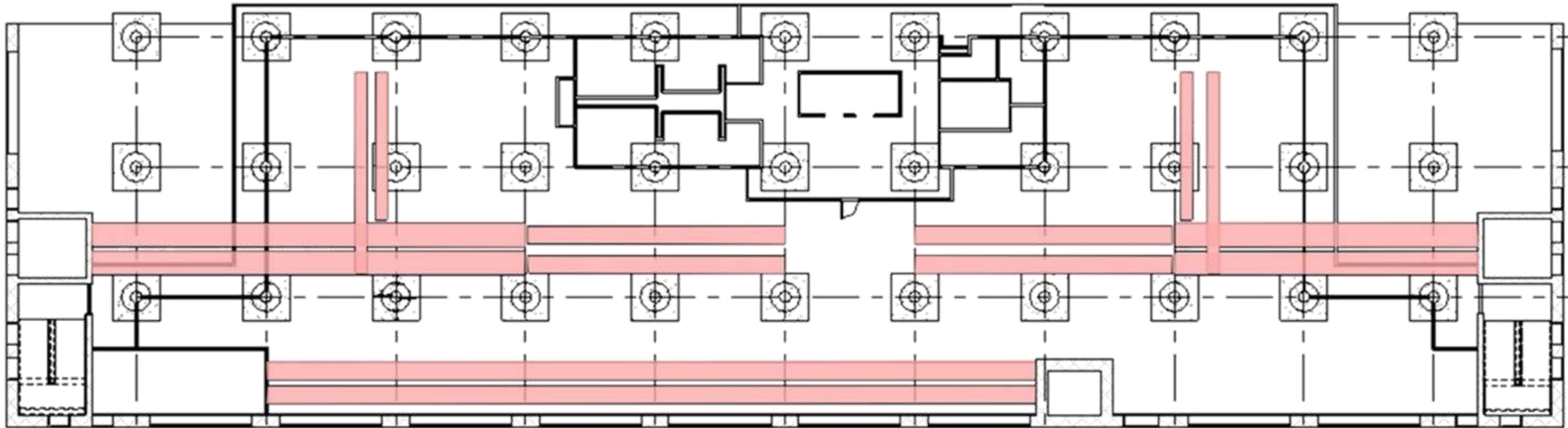
CIRULATION PLANS



OPTION #2

Scale:
1/16" = 1'-0"

SYSTEMS RCP

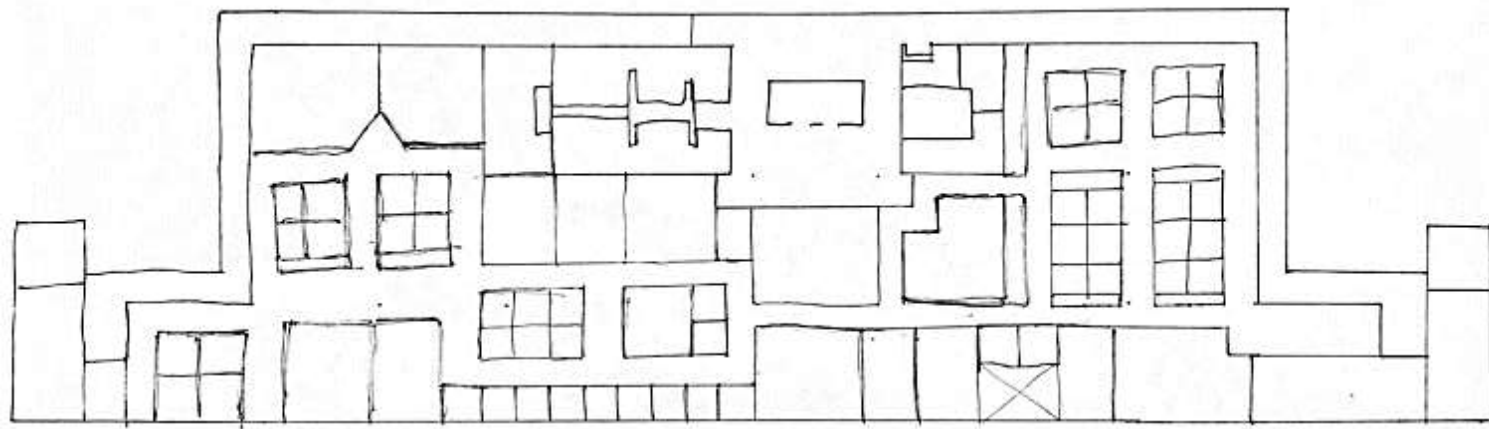


DUCT WORK

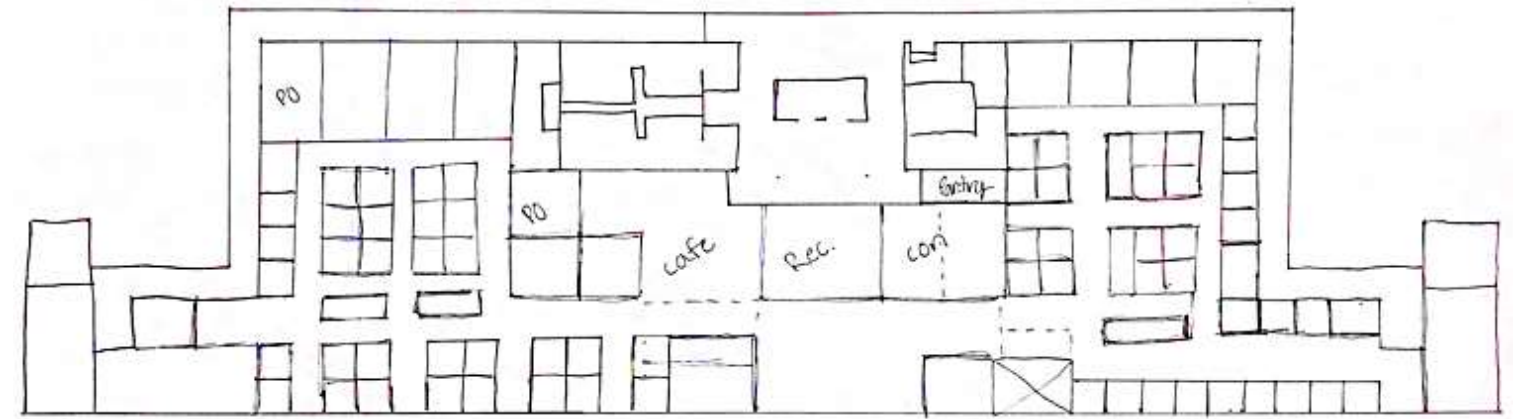
Scale:

1/16" = 1'-0"

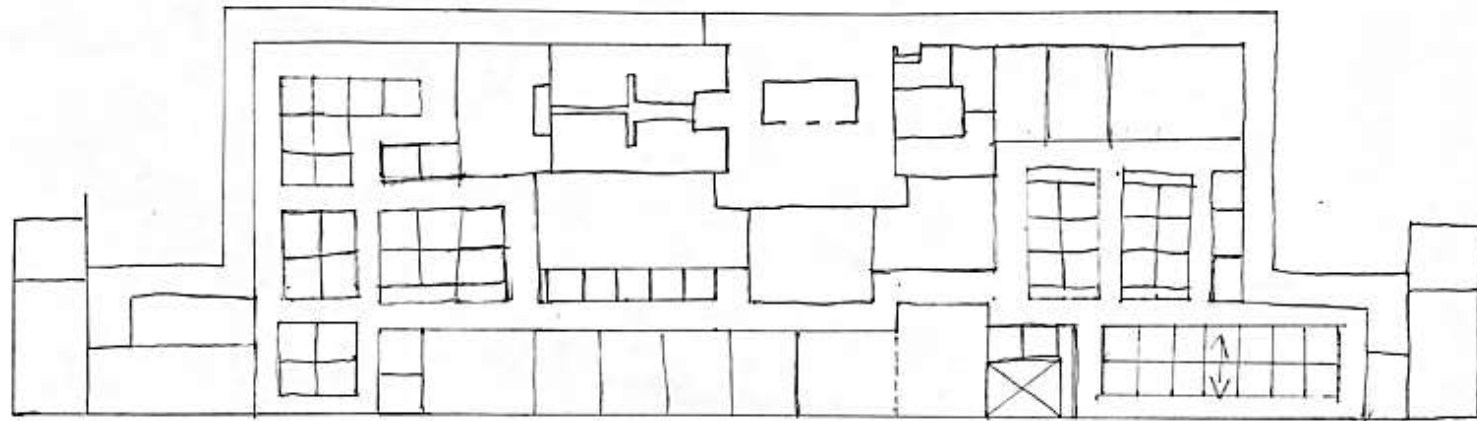
SPACE PLANNING



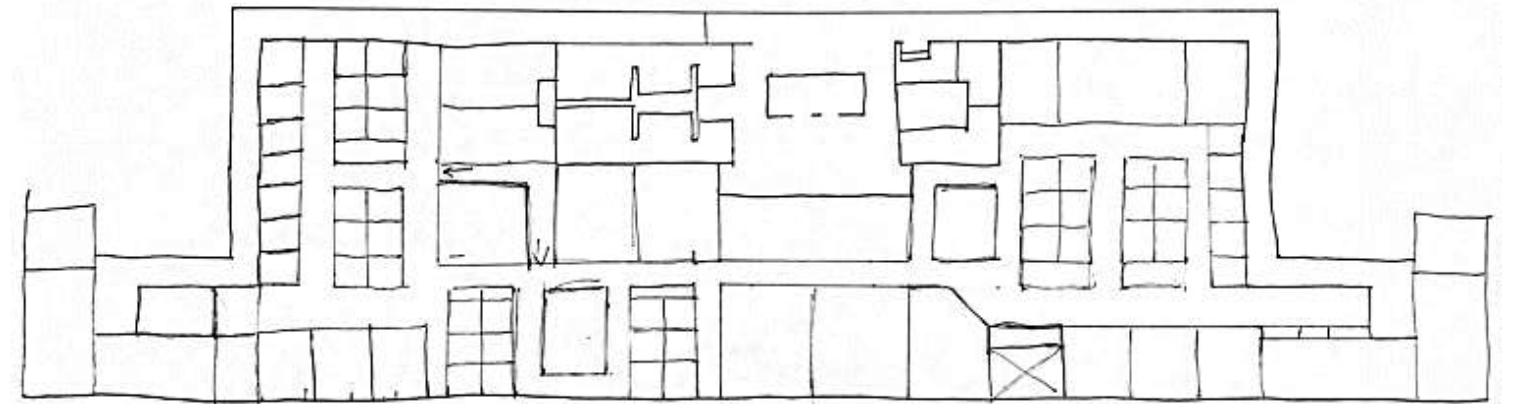
OPTION #1



OPTION #2

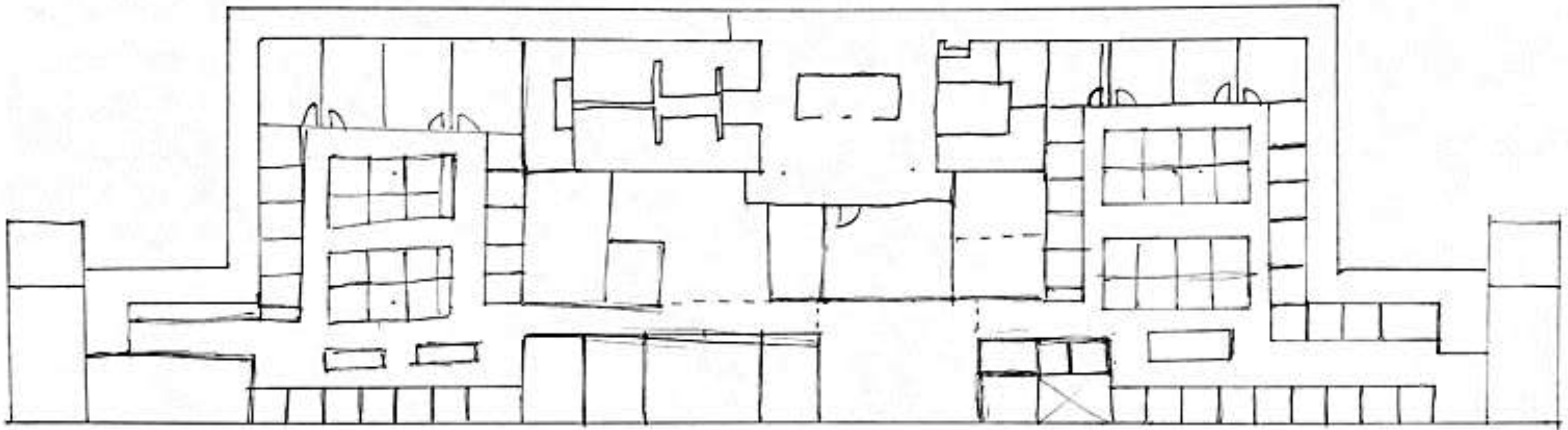


OPTION #3



OPTION #4

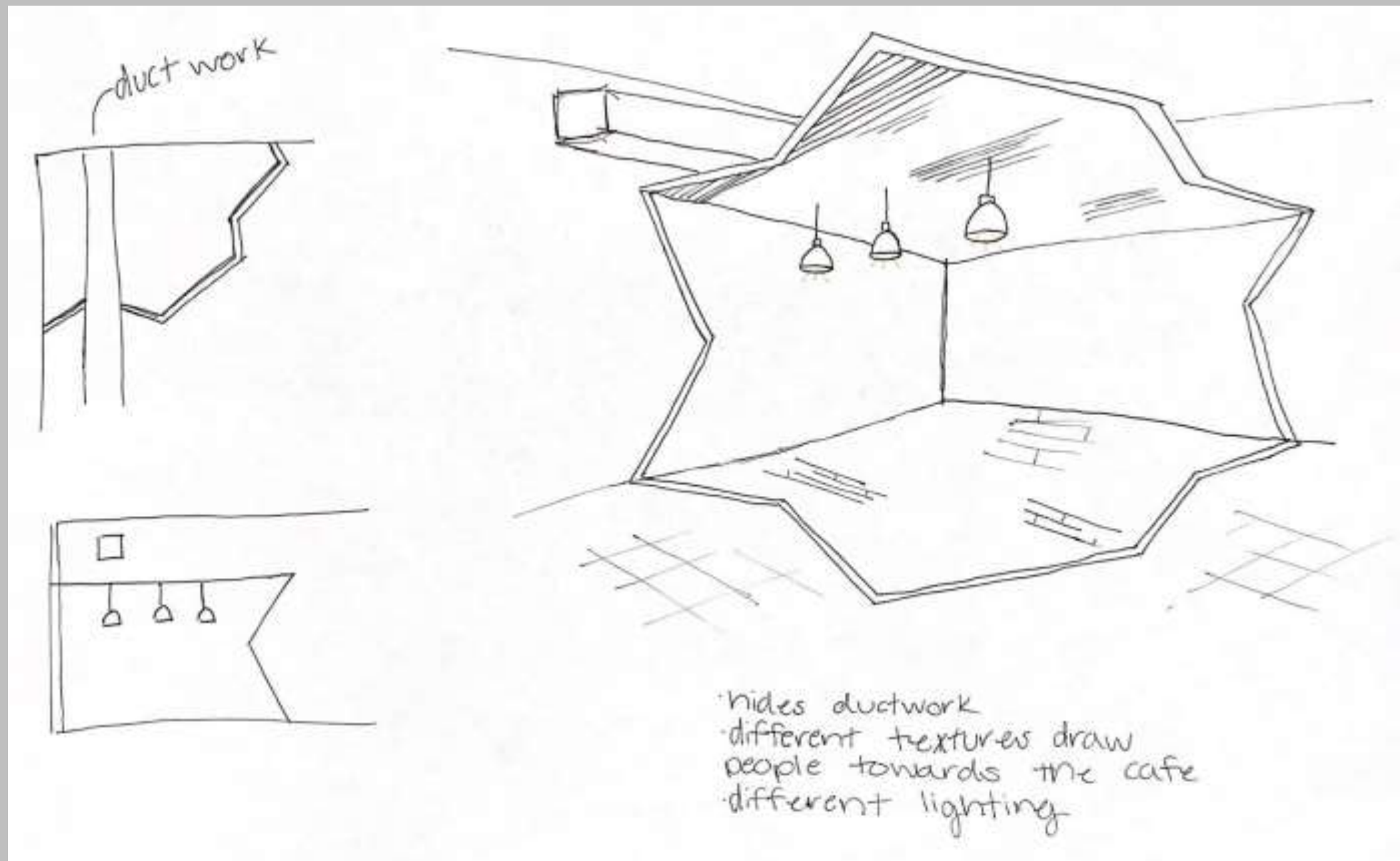
SPACE PLANNING



OPTION #5

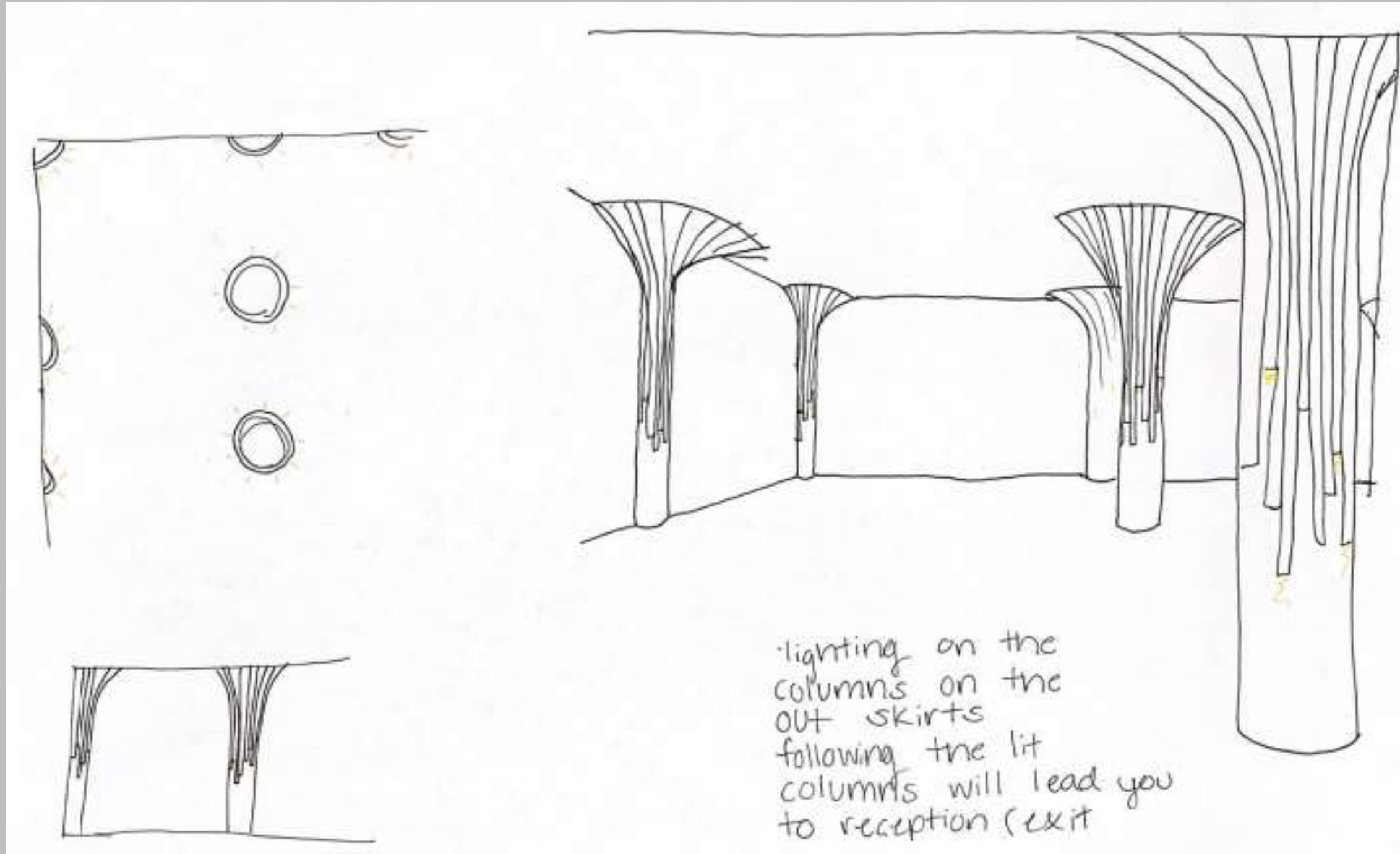
PROBLEM RESOLUTION SKETCHES

WAYFINDING OPTION #1



PROBLEM RESOLUTION SKETCHES

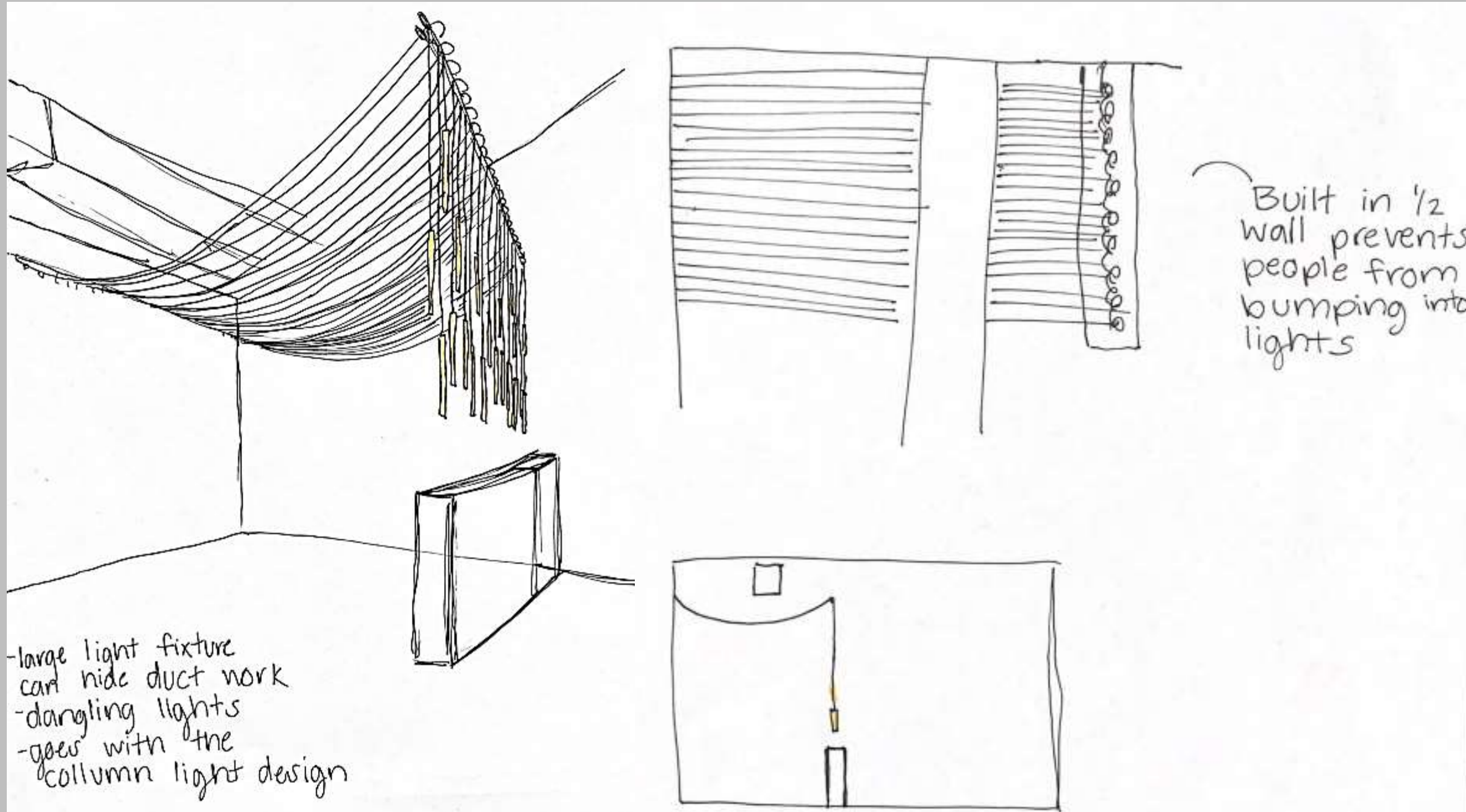
WAYFINDING OPTION #2



lighting on the
columns on the
out skirts
following the lit
columns will lead you
to reception (exit)

PROBLEM RESOLUTION SKETCHES

LIGHTING OPTION #1

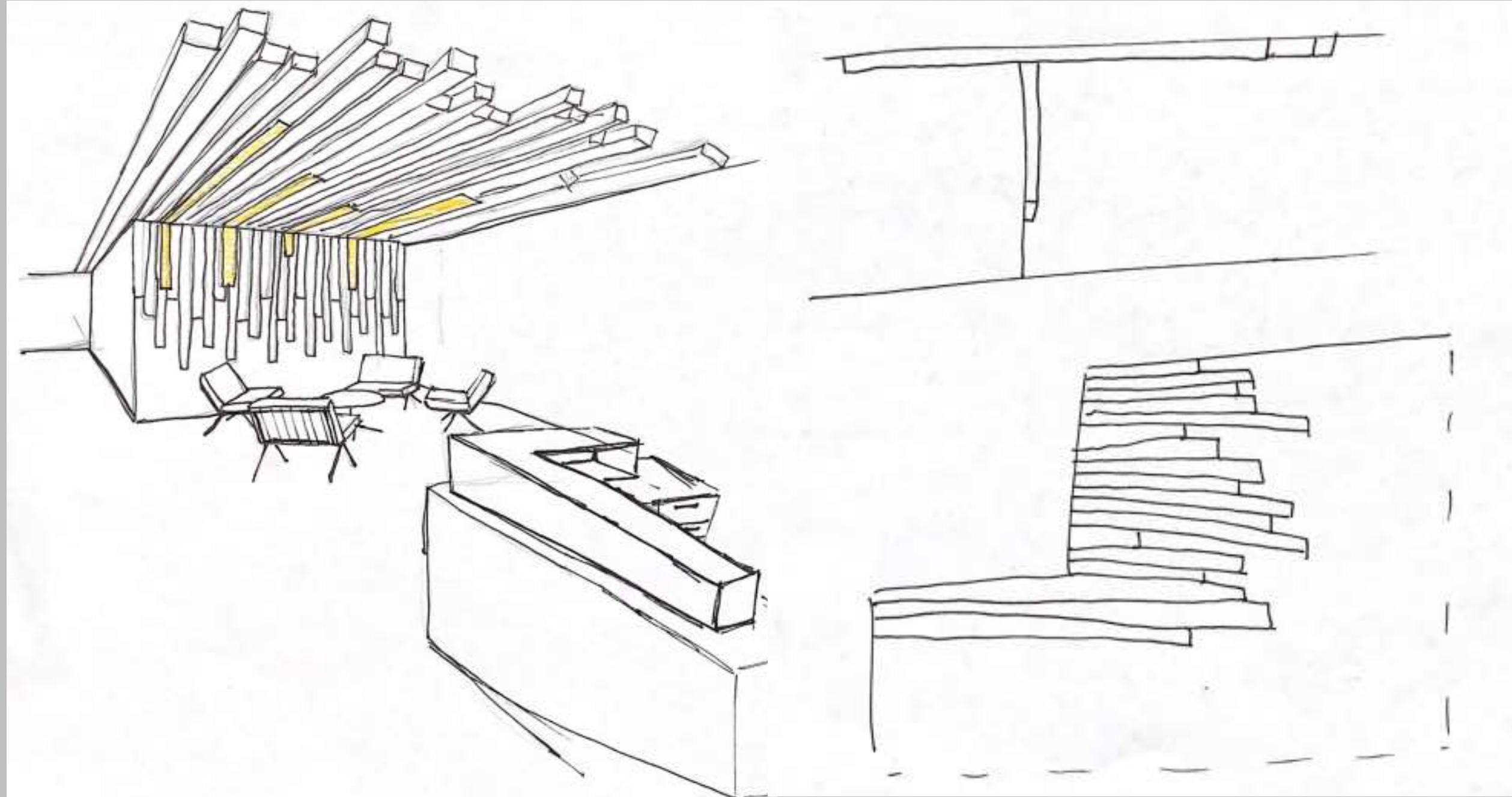


- large light fixture can hide duct work
- dangling lights
- goes with the column light design

Built in 1/2 wall prevents people from bumping into lights

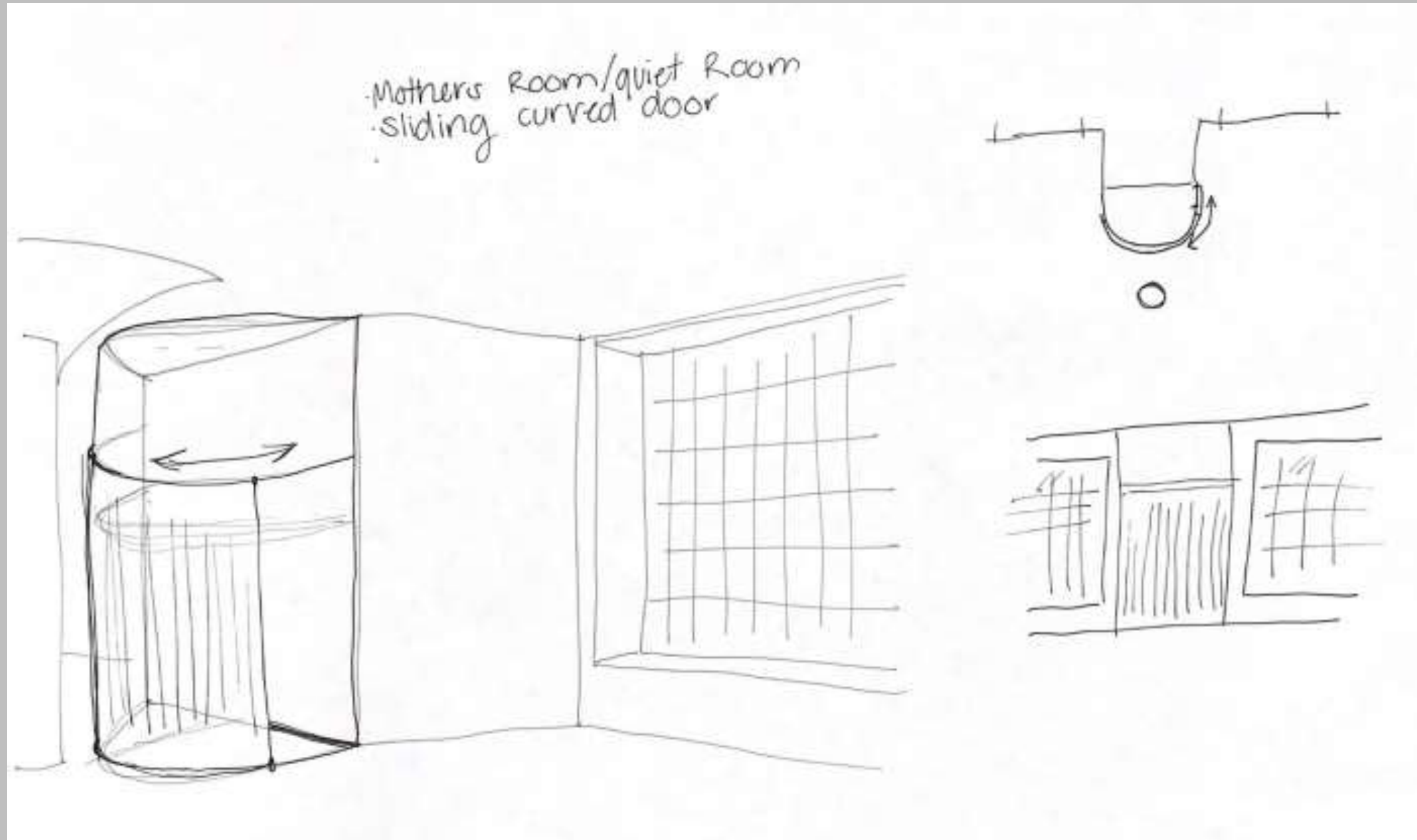
PROBLEM RESOLUTION SKETCHES

LIGHTING OPTION #2



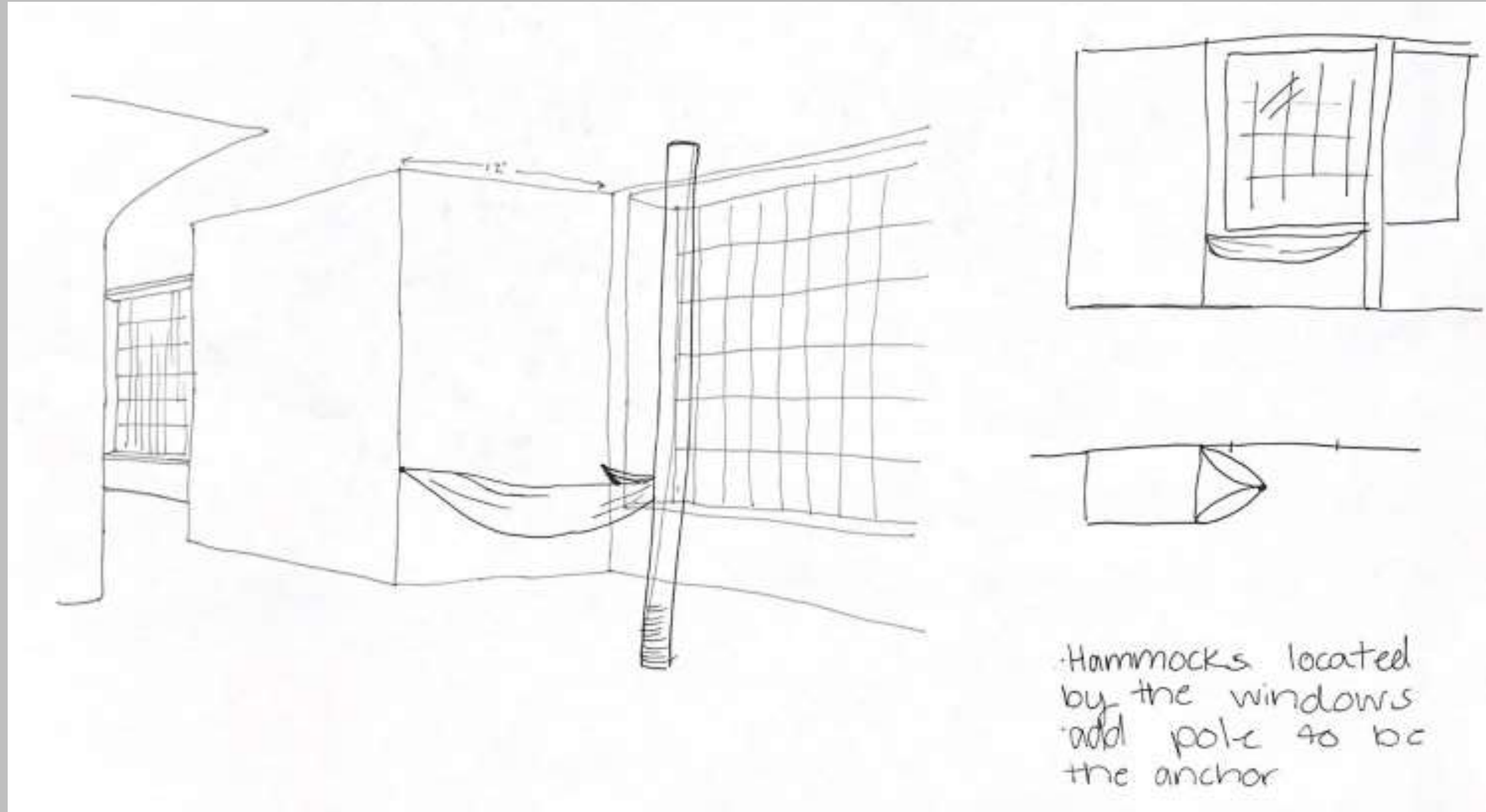
PROBLEM RESOLUTION SKETCHES

SUPPORT SPACES OPTION #1



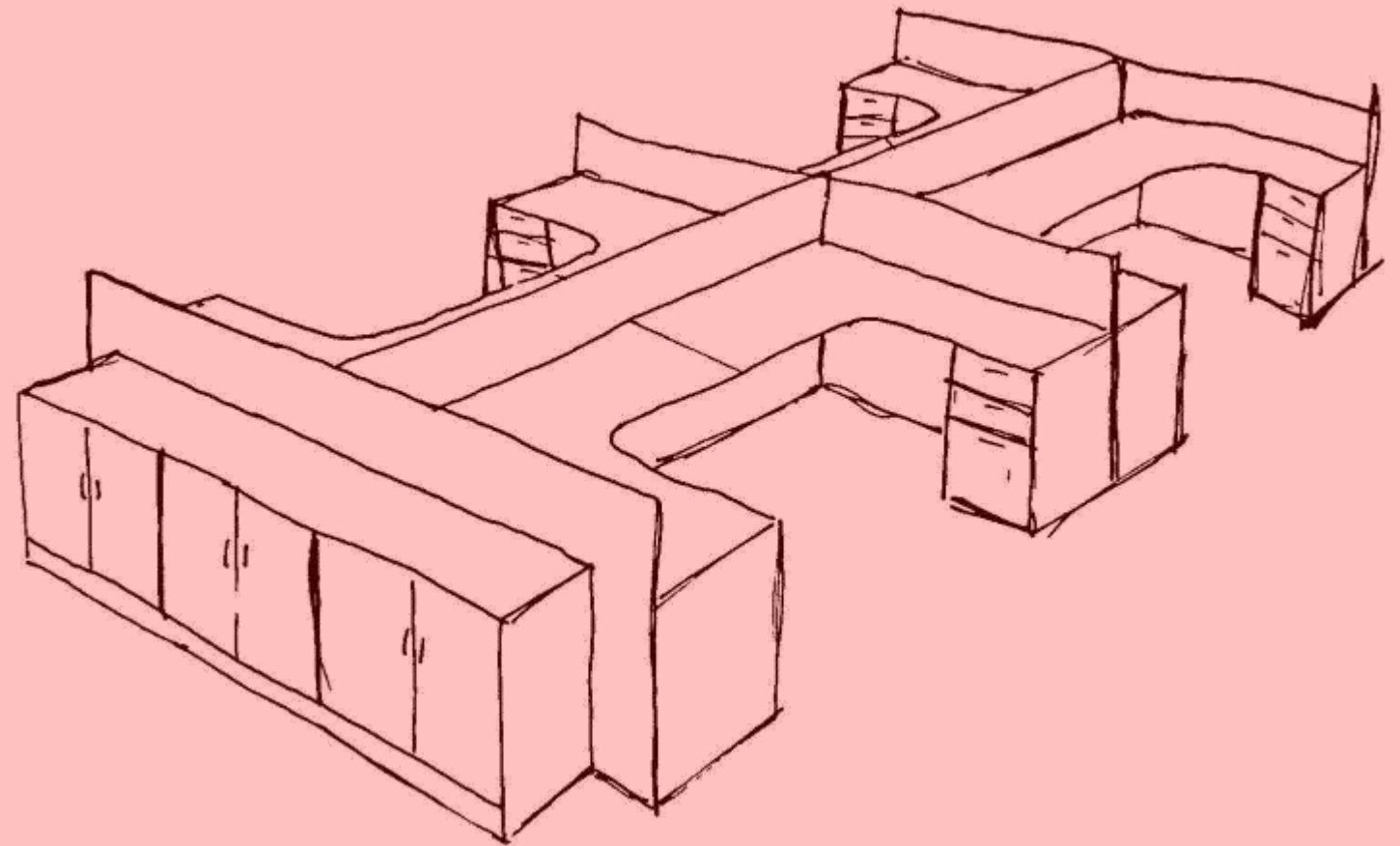
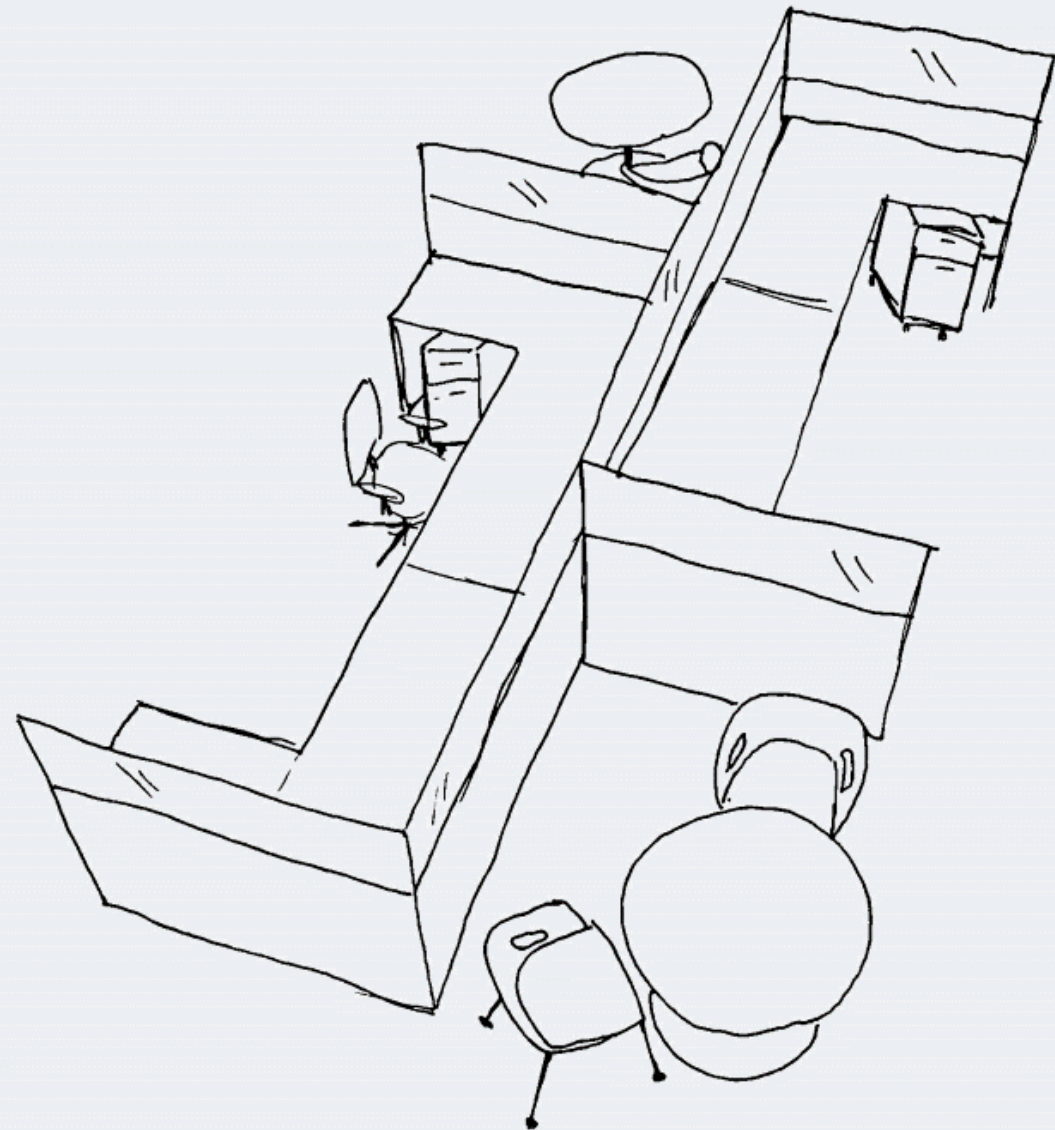
PROBLEM RESOLUTION SKETCHES

SUPPORT SPACES OPTION #2



DESIGN SKETCHES

Option #1

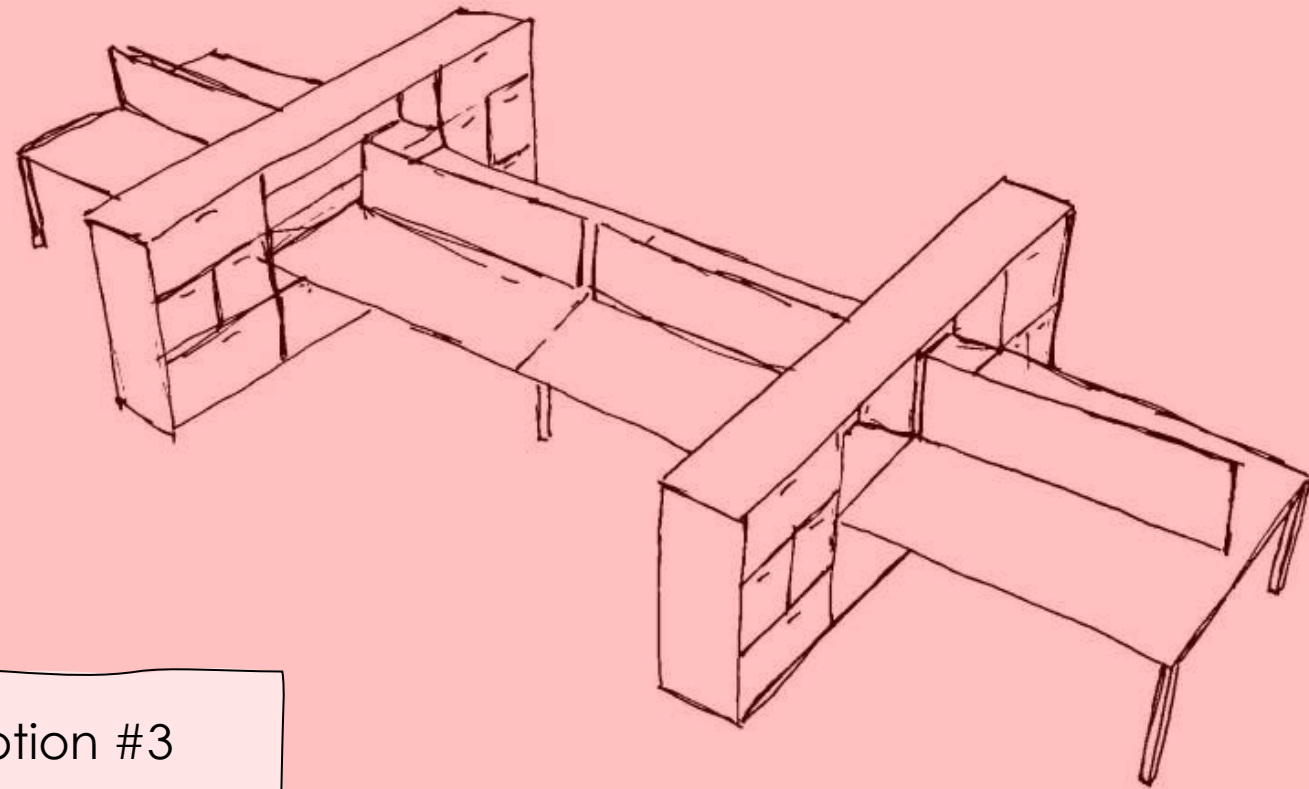


Option #2

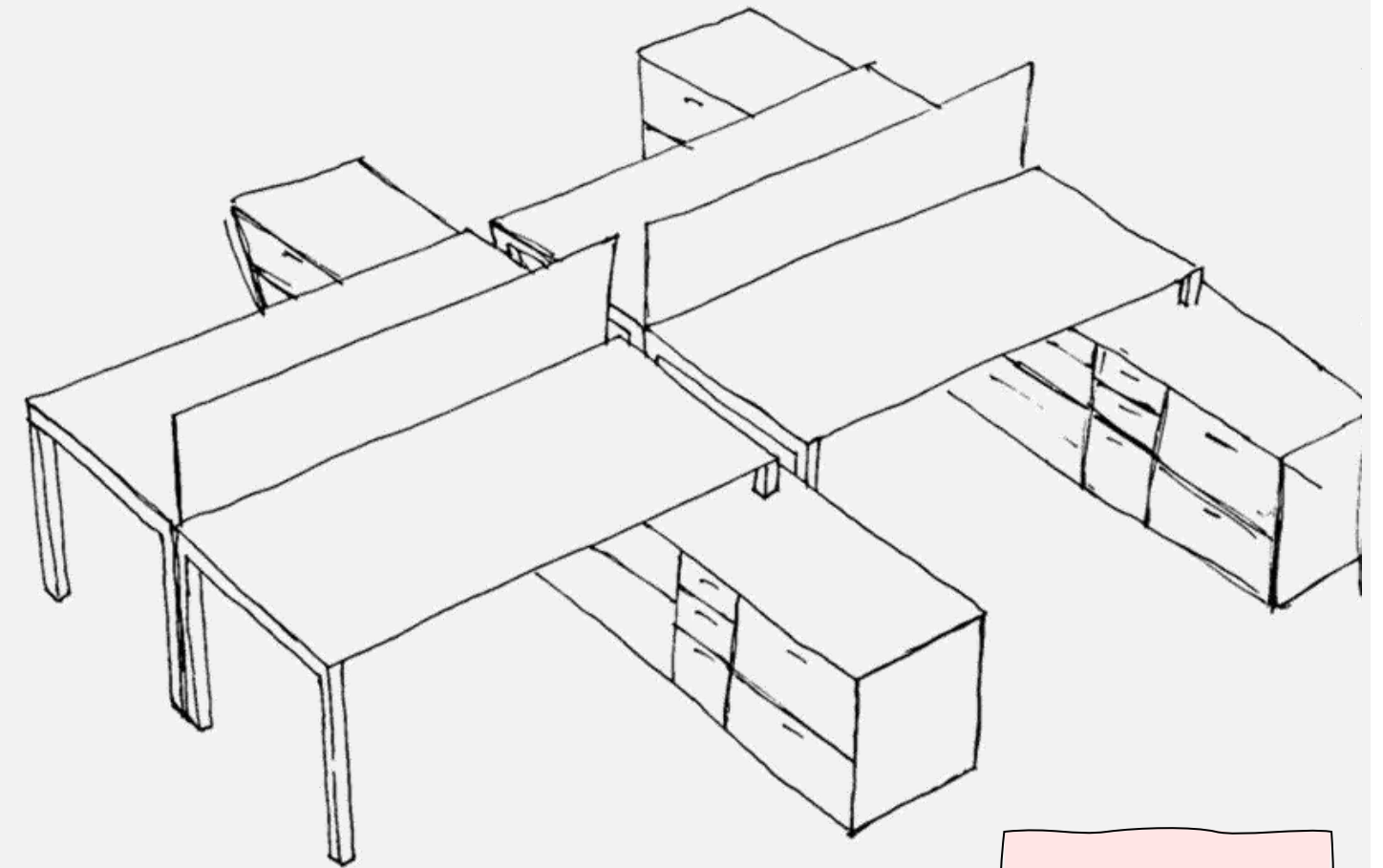
WORKSTATIONS

DESIGN SKETCHES

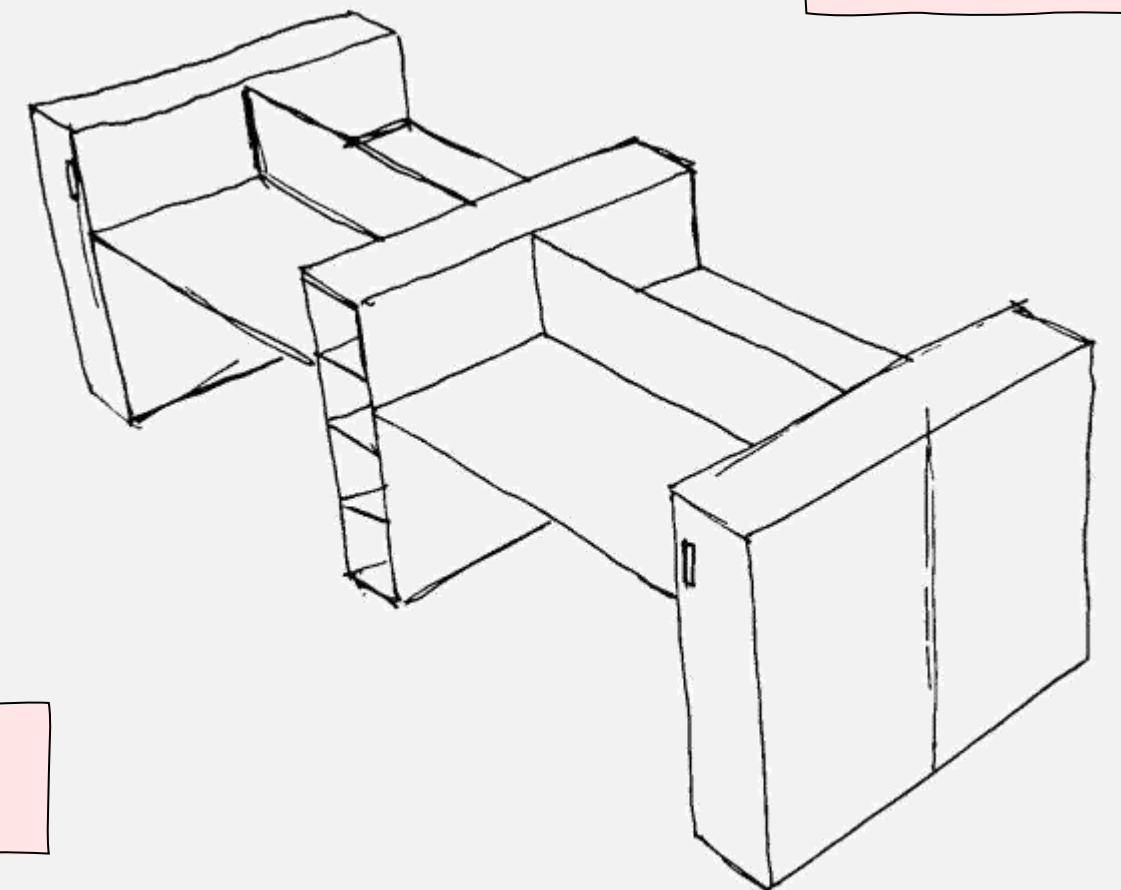
WORKSTATIONS



Option #3



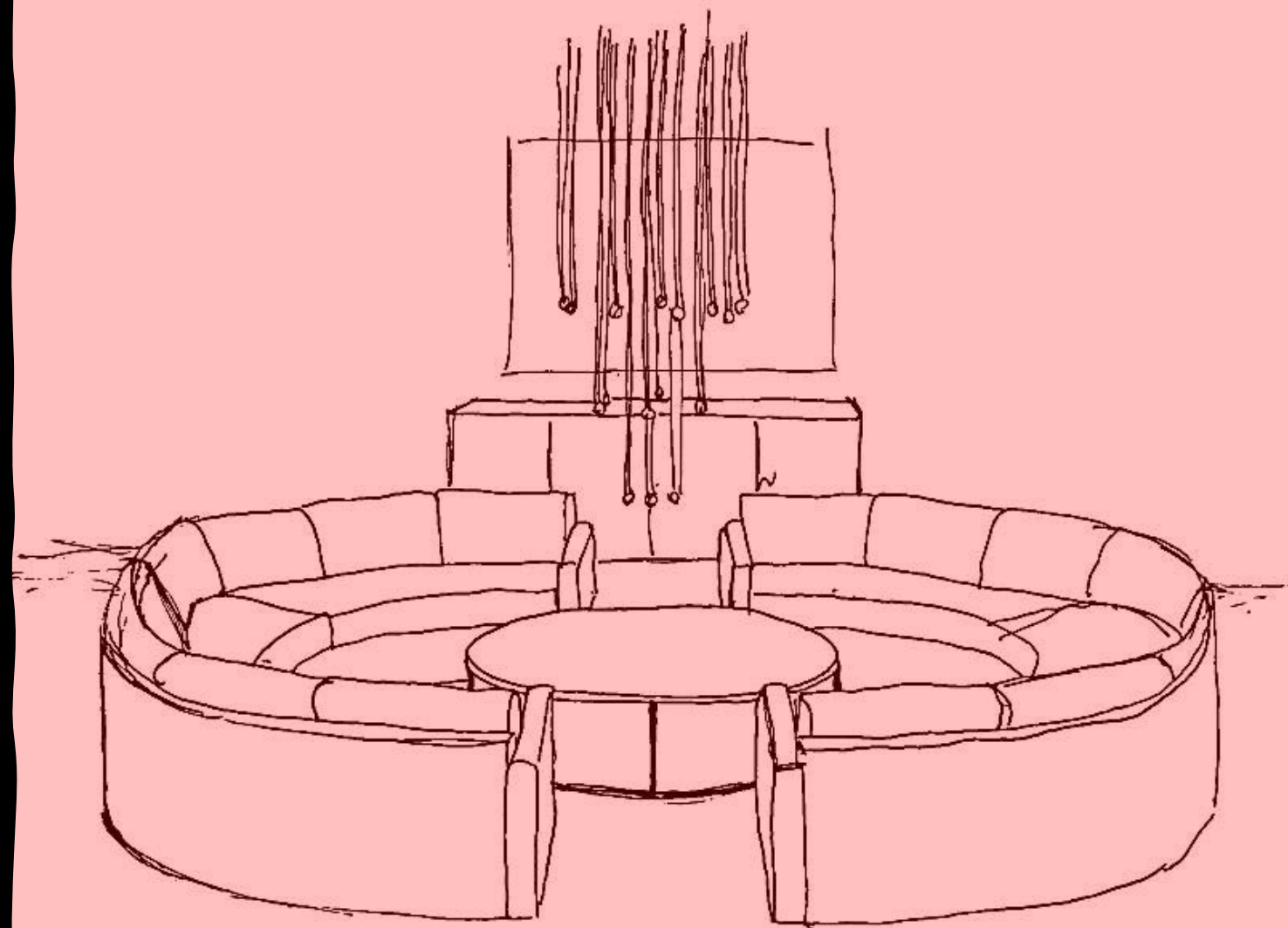
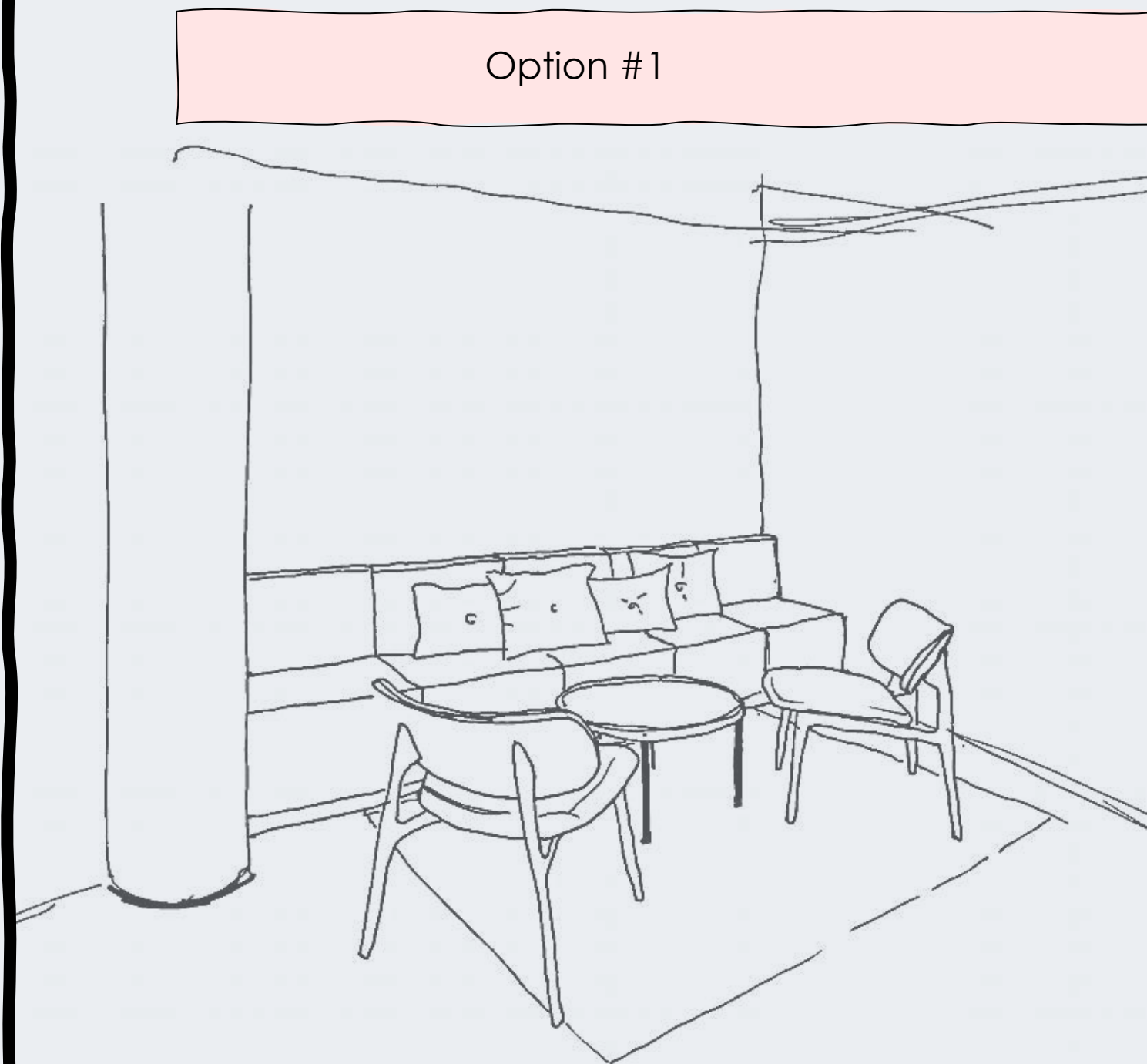
Option #4



Option #5

DESIGN SKETCHES

Option #1



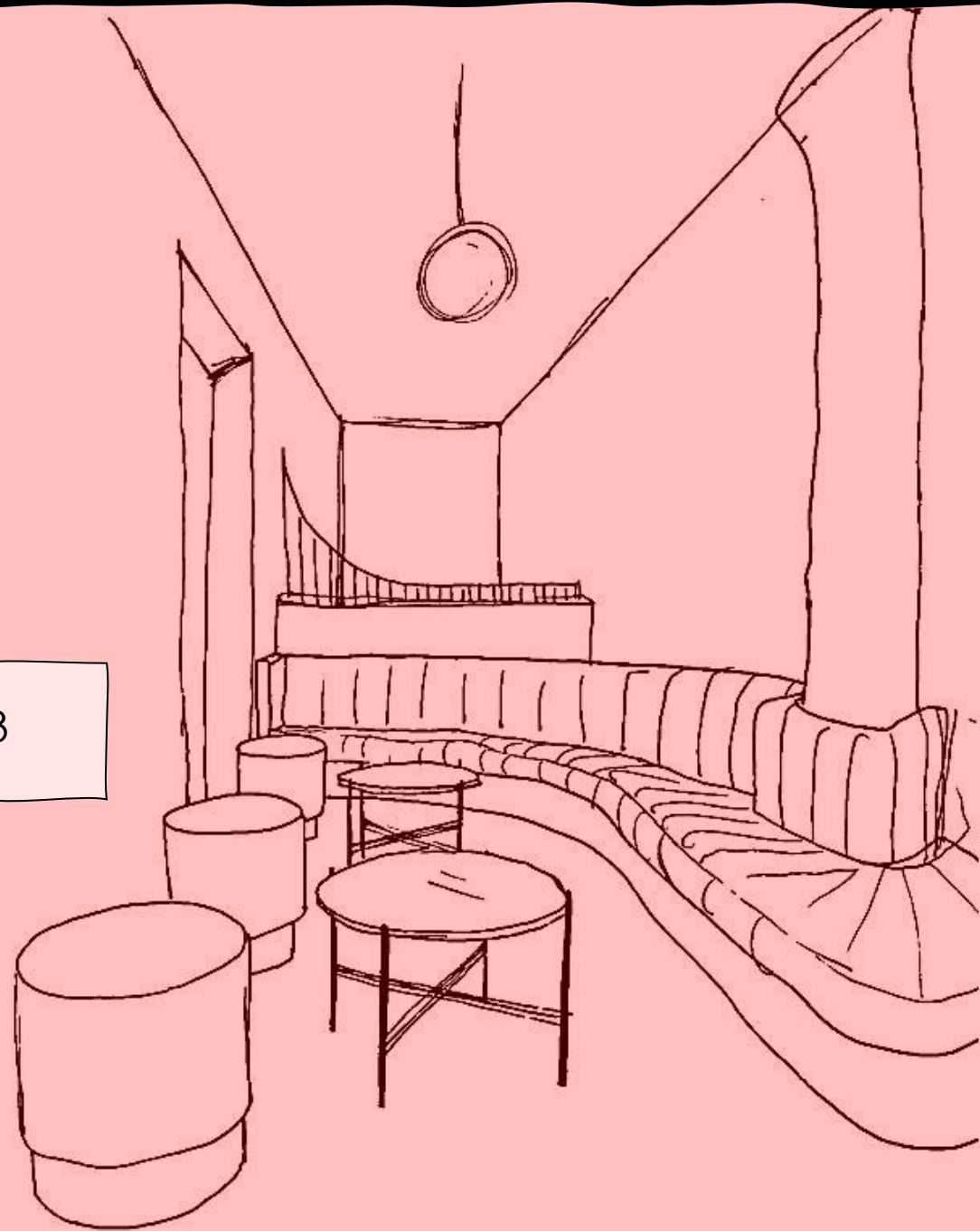
Option #2

LOUNGE

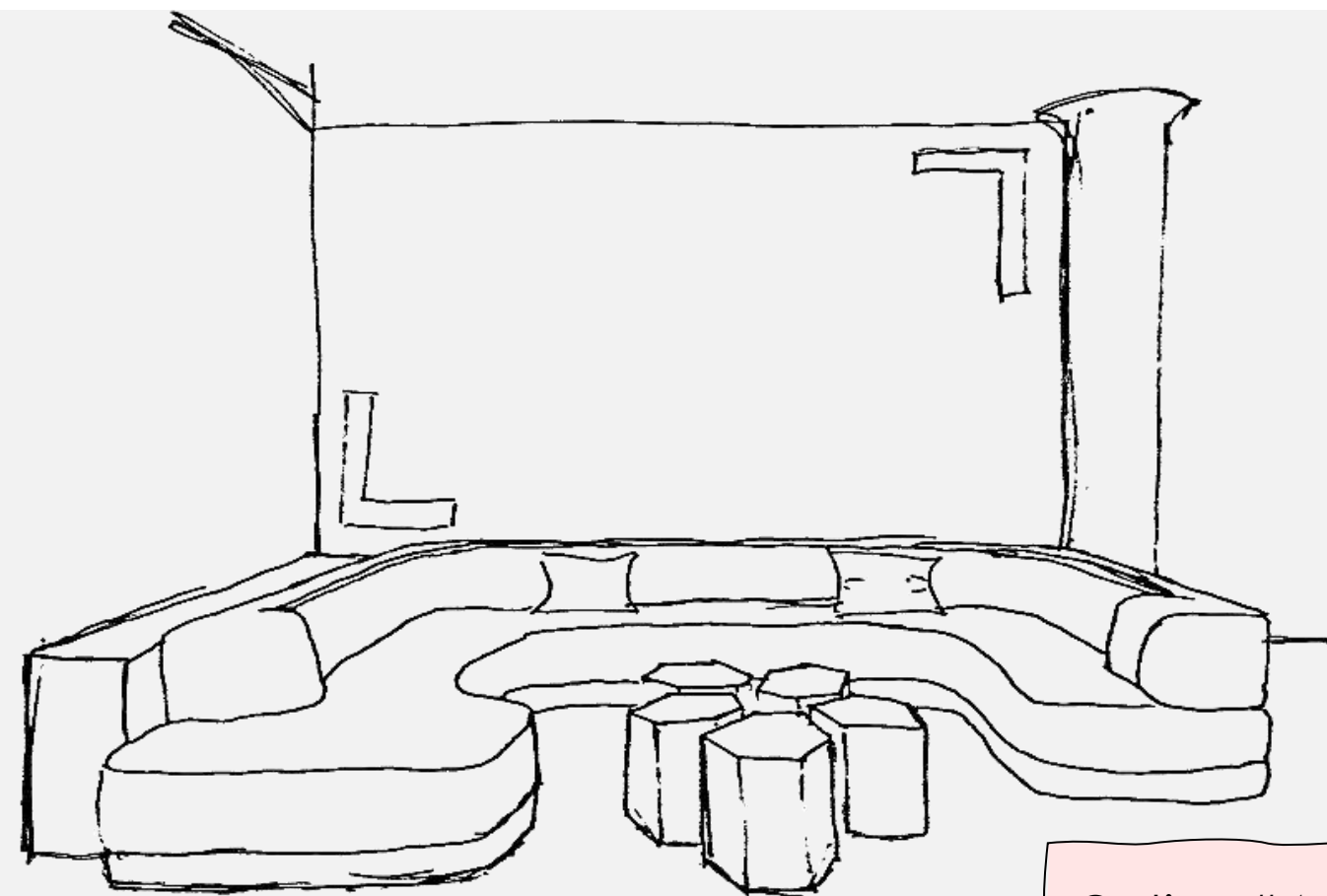
DESIGN SKETCHES

LOUNGE

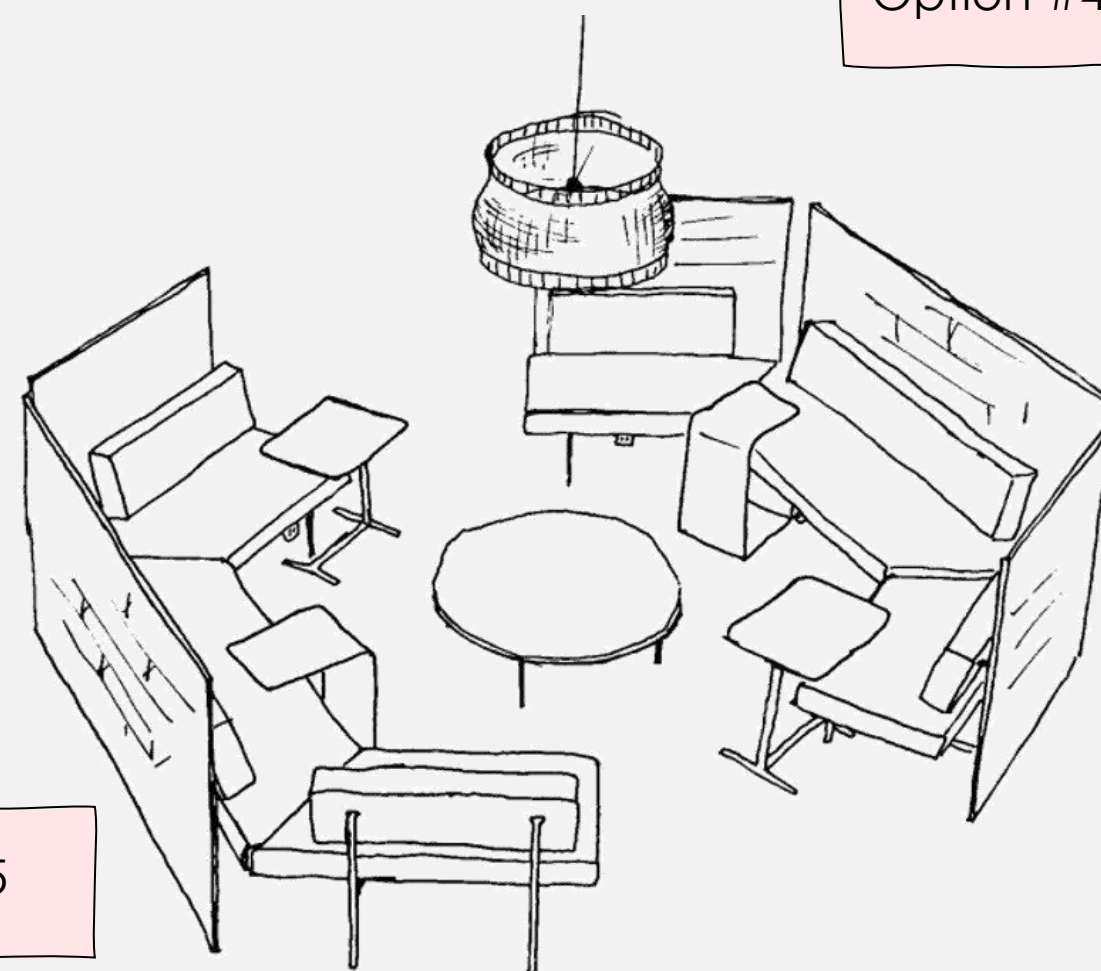
Option #3



Option #4

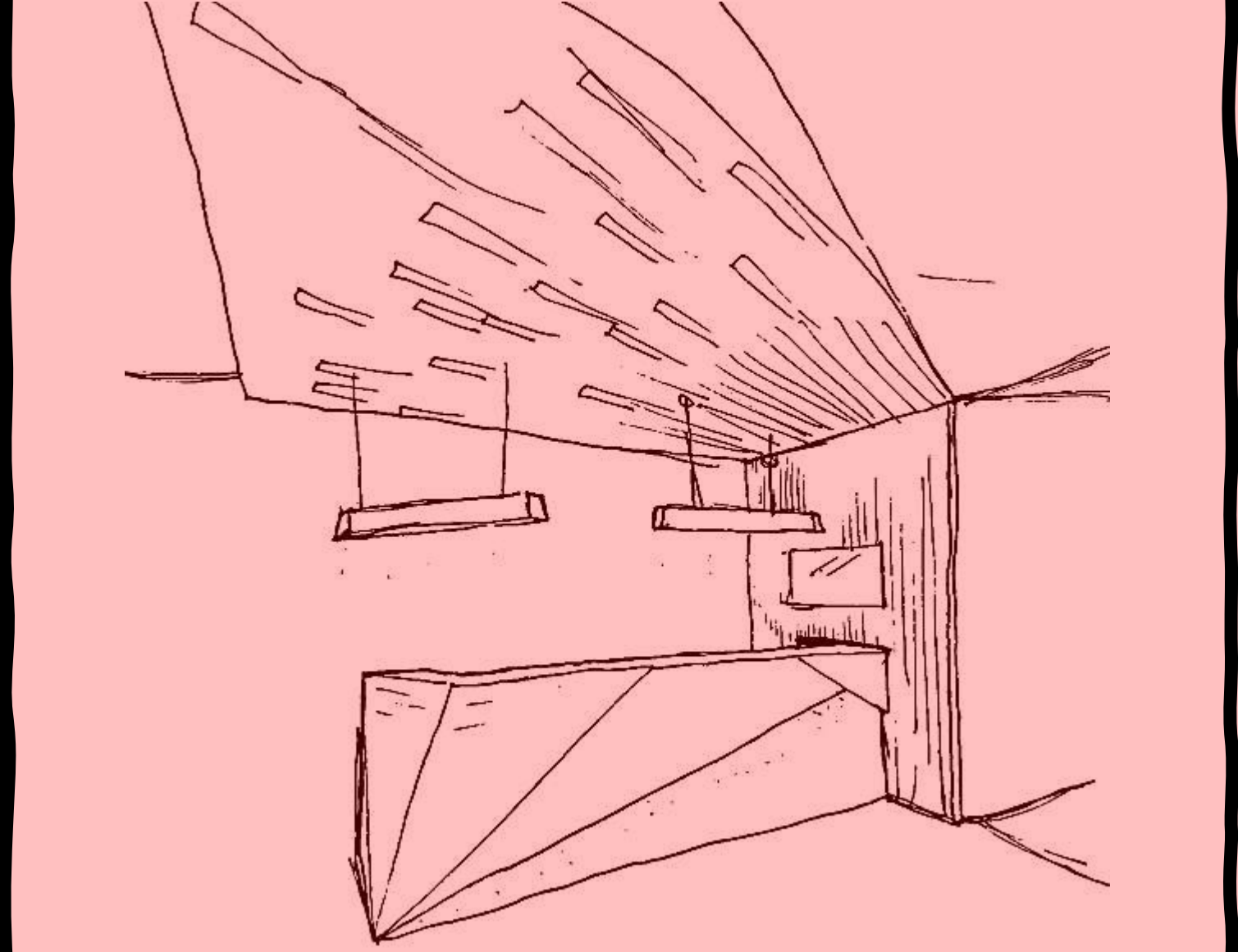
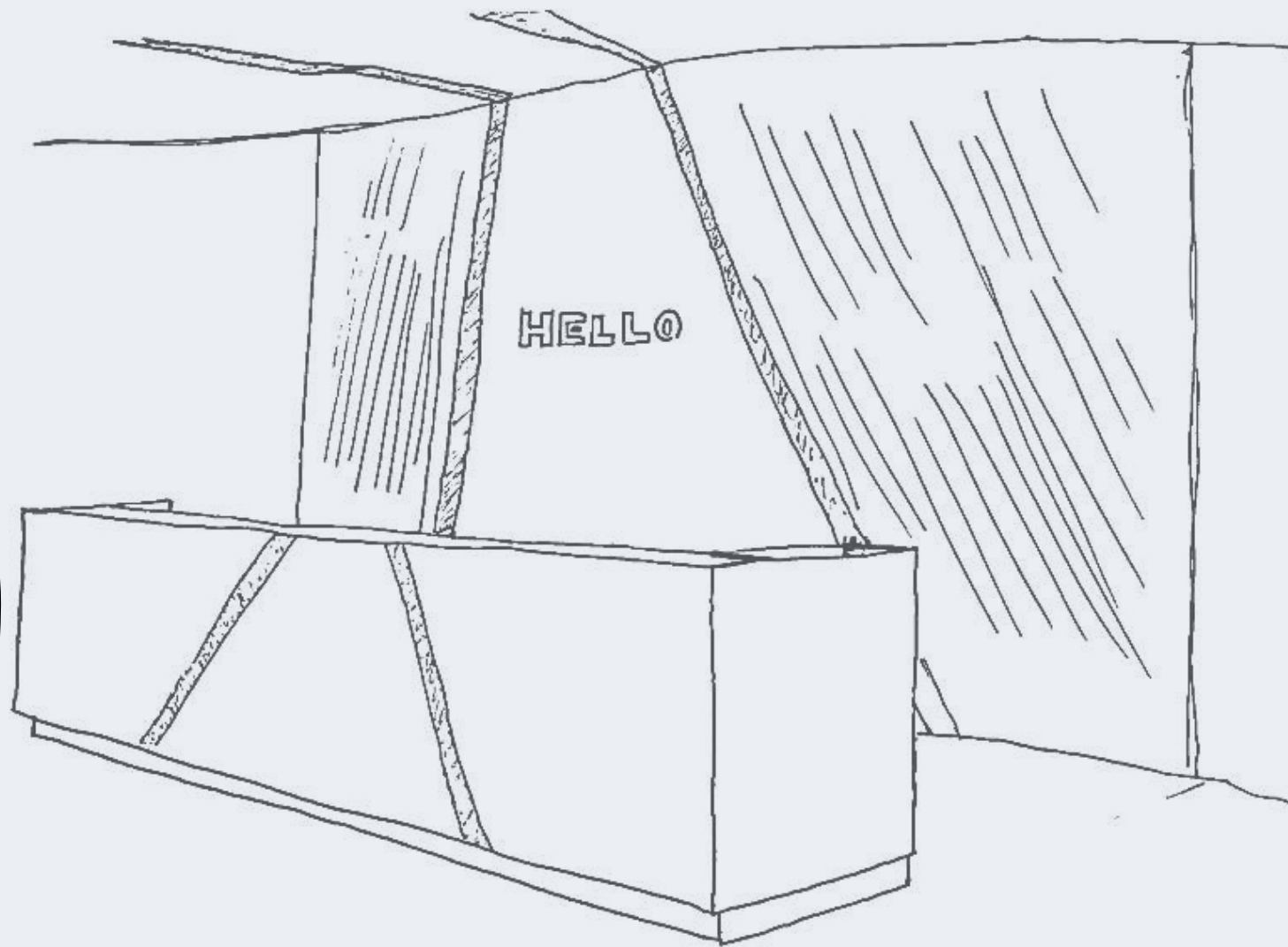


Option #5



DESIGN SKETCHES

Option #1

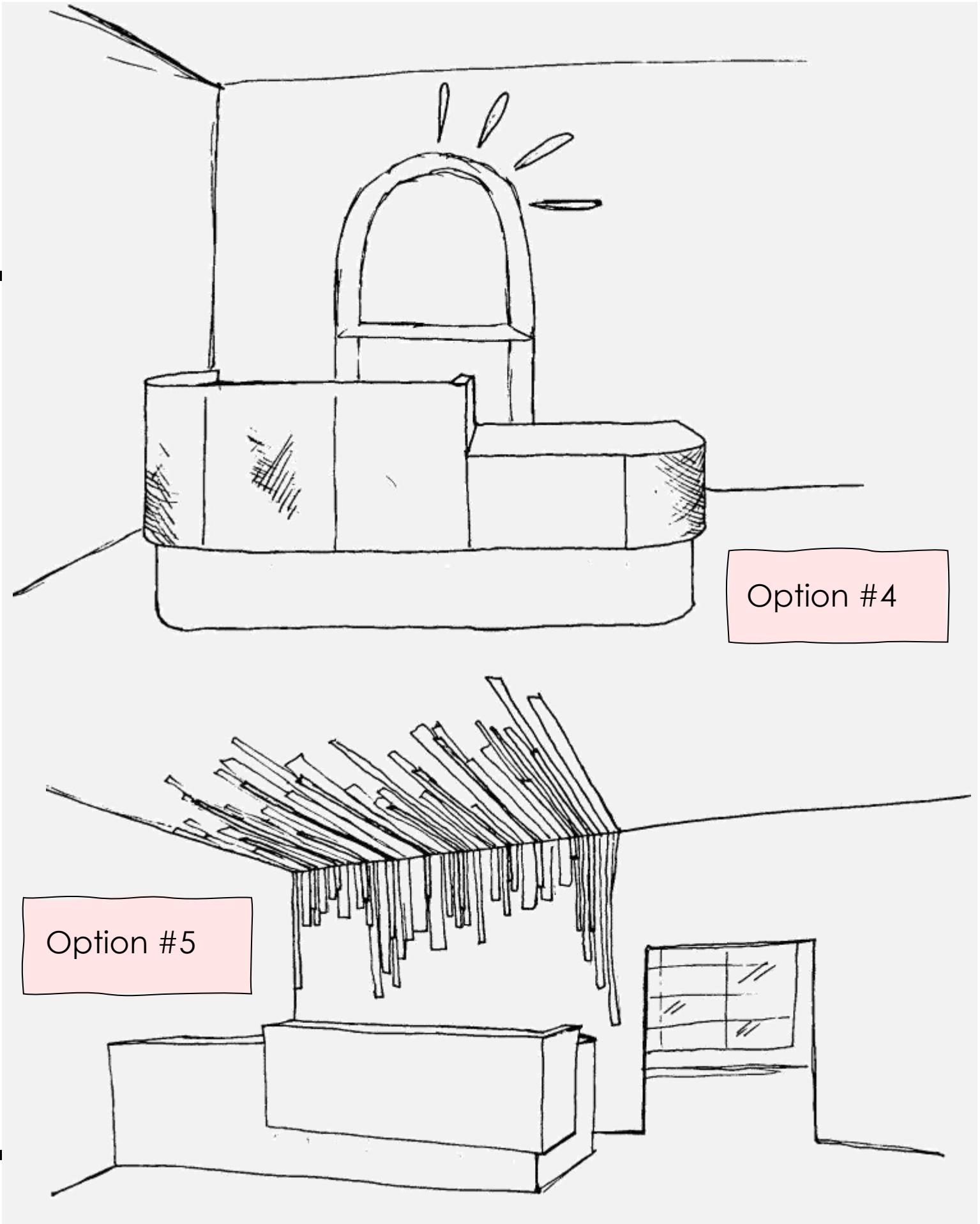
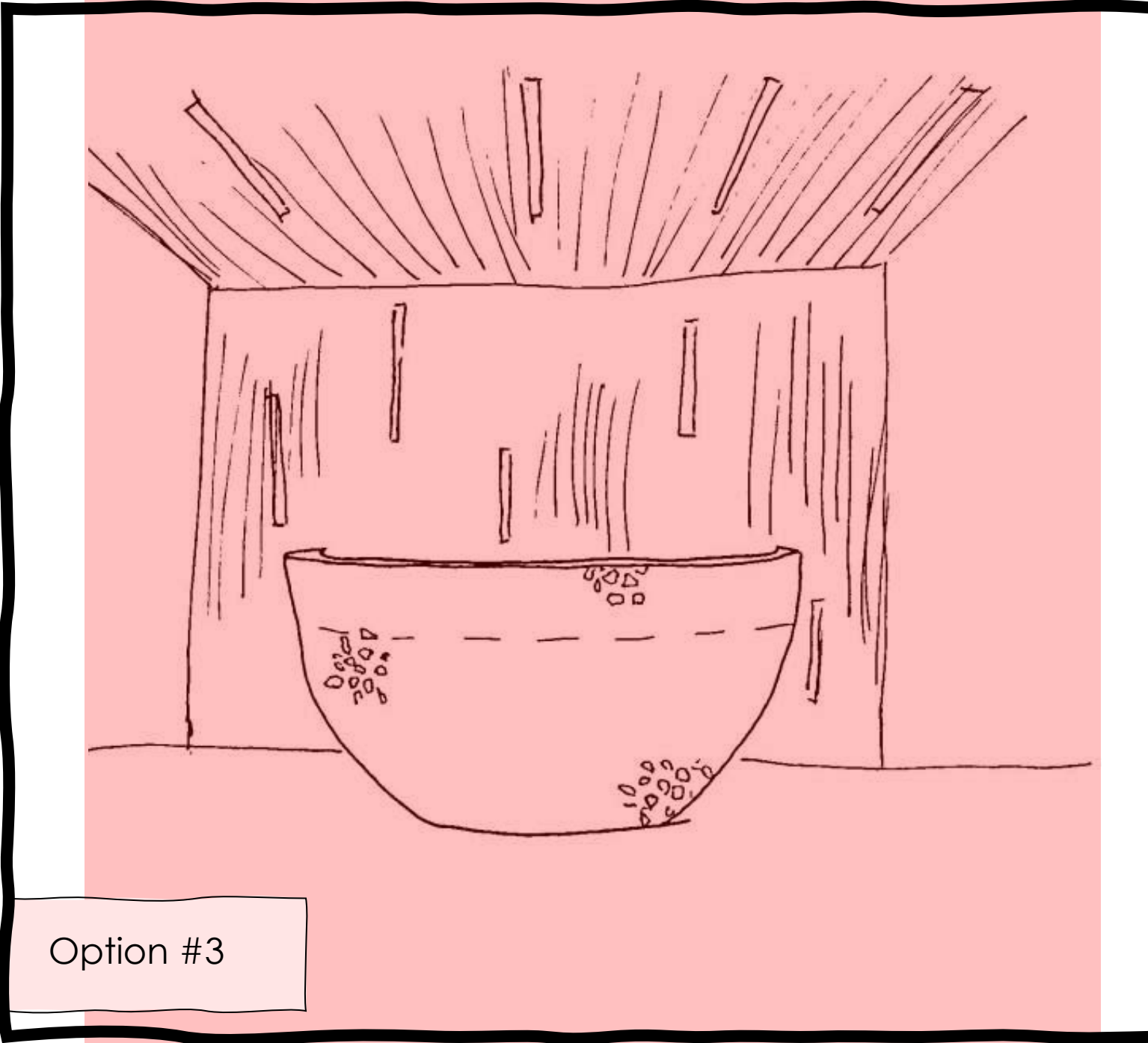


Option #2

ENTRY/RECEPTION

DESIGN SKETCHES

ENTRY/RECEPTION



LIGHTING MODEL

