

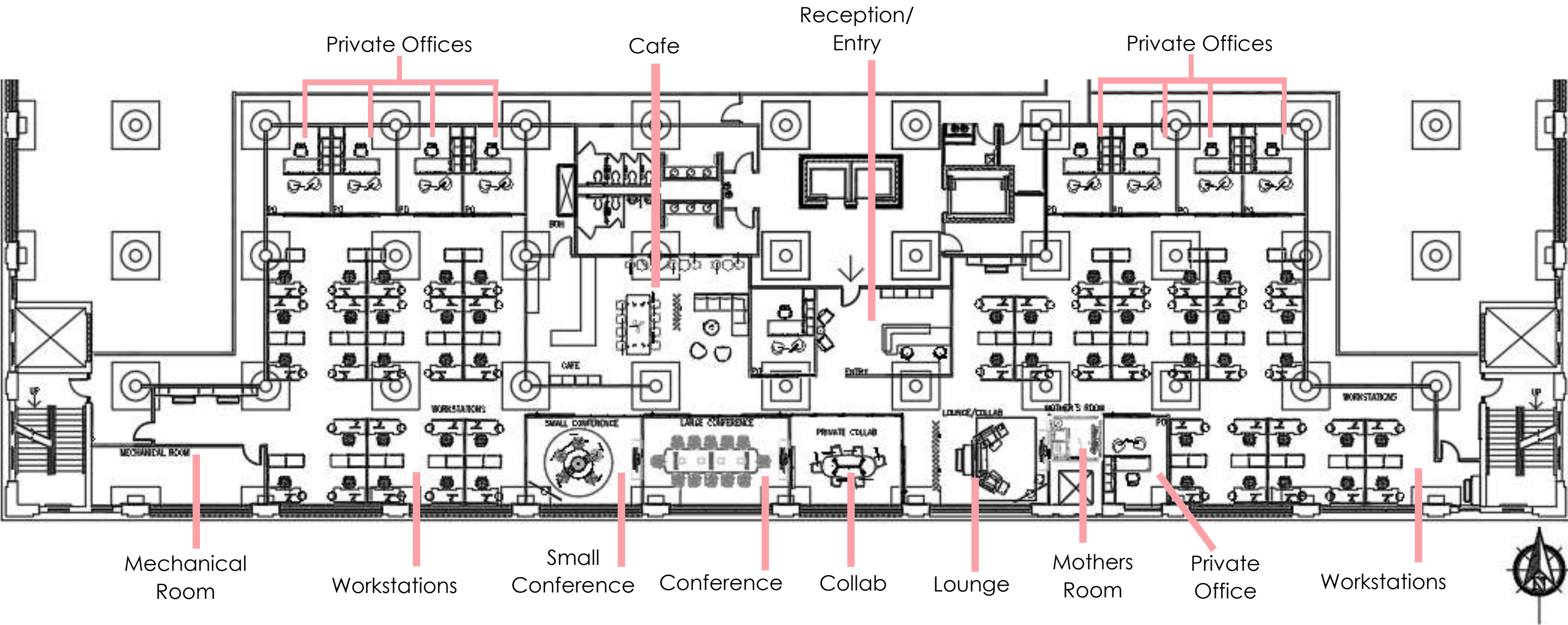


# PART THREE

Paige S. Stark  
Final Schematic Design  
IDSN 3202

# FURNITURE PLAN

Scale: 0'1/16" = 1'0"



Private Offices

Cafe

Reception/  
Entry

Private Offices

Mechanical  
Room

Workstations

Small  
Conference

Conference

Collab

Lounge

Mothers  
Room

Private  
Office

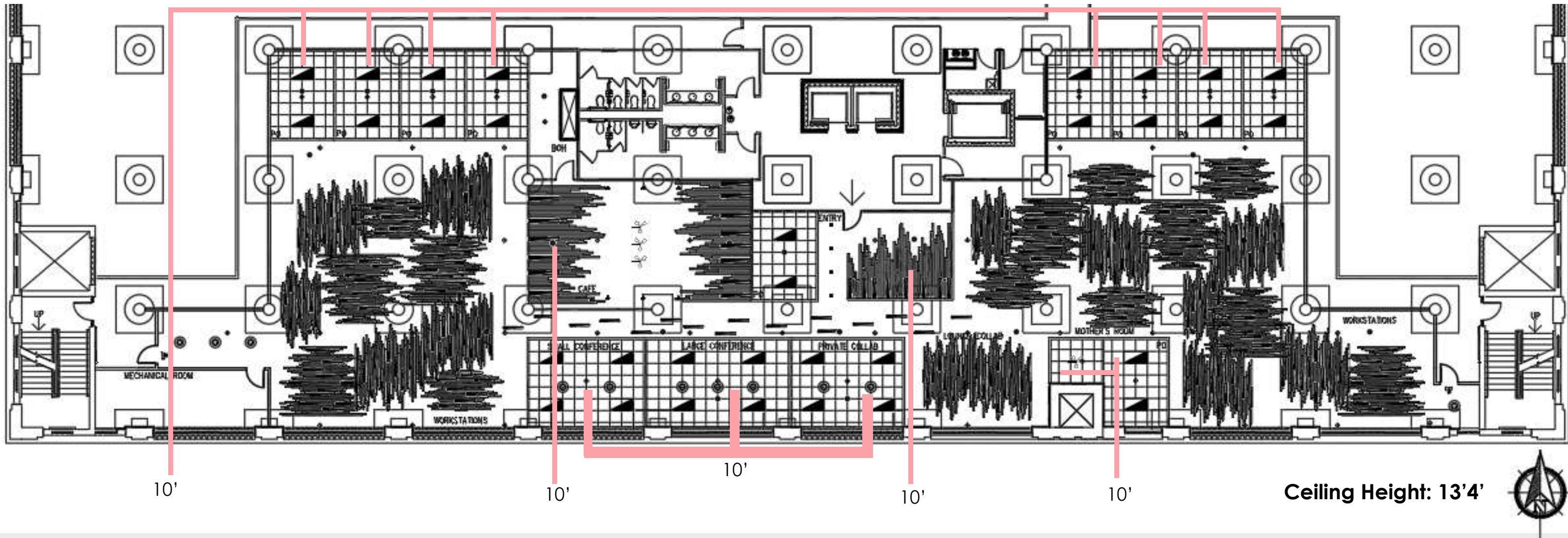
Workstations



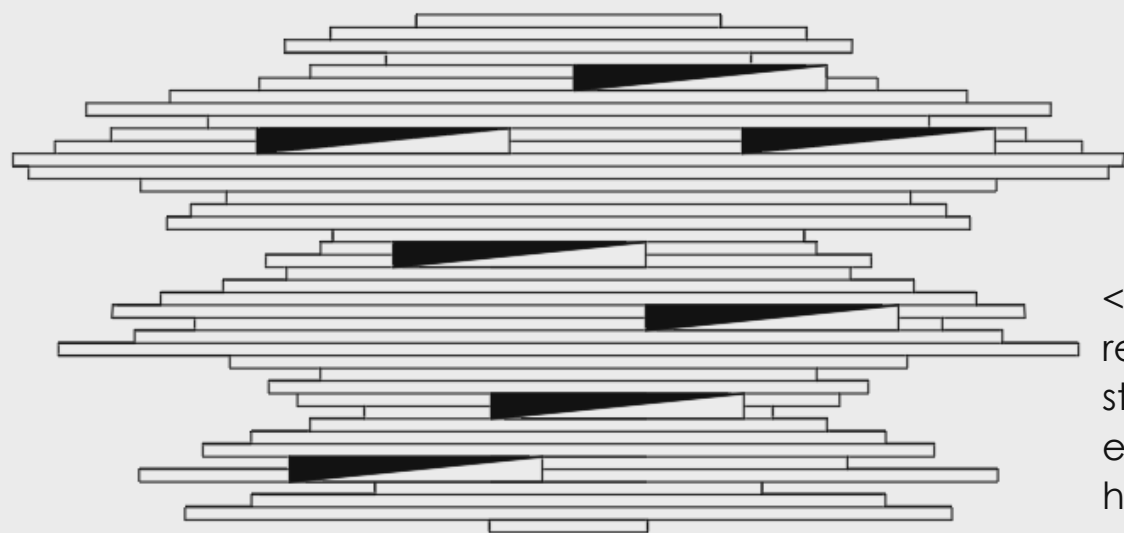


# REFLECTED CEILING PLAN

Scale – 1/16" = 1'0"



Ceiling Height: 13'4"

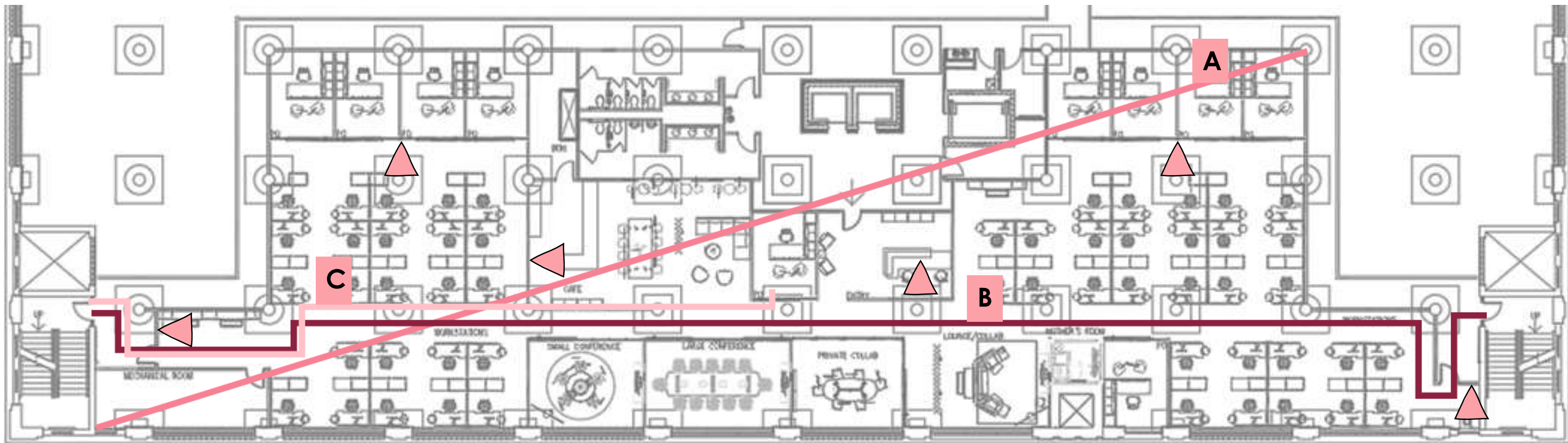



< Ceiling panels with recessed lighting are staggered throughout at either 8', 9', or 10' ceiling heights

- |  |                |  |               |
|--|----------------|--|---------------|
|  | 24"x48" LED    |  | Pendant Light |
|  | 4"x42" LED     |  | Pendant Light |
|  | Exit Sign      |  | Pendant Light |
|  | Smoke Detector |  | Pendant Light |
|  | Sprinkler      |  | Pendant Light |

# LIFE SAFETY PLAN

Scale: 0'1/16" = 1'0"



- Corridors are a minimum of 44"
- : Fire Extinguisher
- **A** : 205'6" ( $/3 = 68'6"$ )
- **B** : 277'2" (greater than 68'6")
- **C** : 132' (Exit travel distance)

# LIFE SAFETY PLAN

Building Construction and Occupancy									
Construction Type		Sprinklers?		Occupancy Type					
Type I		Yes		B					
Exit Requirements: Number and Arrangement of Exits									
Space Designation	# of Exits		Travel Distance		Arrangement: Means of Egress				
	Required	Shown on Plans	Allowable Distance	Actual Distance Shown on Plans	Req'd Distance Between Exits		Actual Distance Shown on Plans		
Suite 3100	2	2	300'-0"	132'	68'6"		277'2"		
Notes:									
Use Group or Space Designation	(A)	(B)	Calculated Occupant Load = A/B	©		Exit Width (Inches)			
	Area = Sq. Ft.	Area per Occupant		Egress per Occupant		Required Width = (A/B)xC		Actual Width	
				Stair	Level	Stair	Level	Stair	Level
Suite 3100	10,087	100	100	.3"	.2"	30"	20"	62"	62"
Notes:									



# ANTHROPOMETRIC AND ERGONOMIC FEATURES



## ○ **Steelcase: Siento**

LiveBack technology flexes with you as you move and recline in the chair, for full support.

Adjustable back tension control lets you set the amount of resistance as you recline.

Flexible seat edge relieves pressure on the back of the legs as you recline or lean forward.

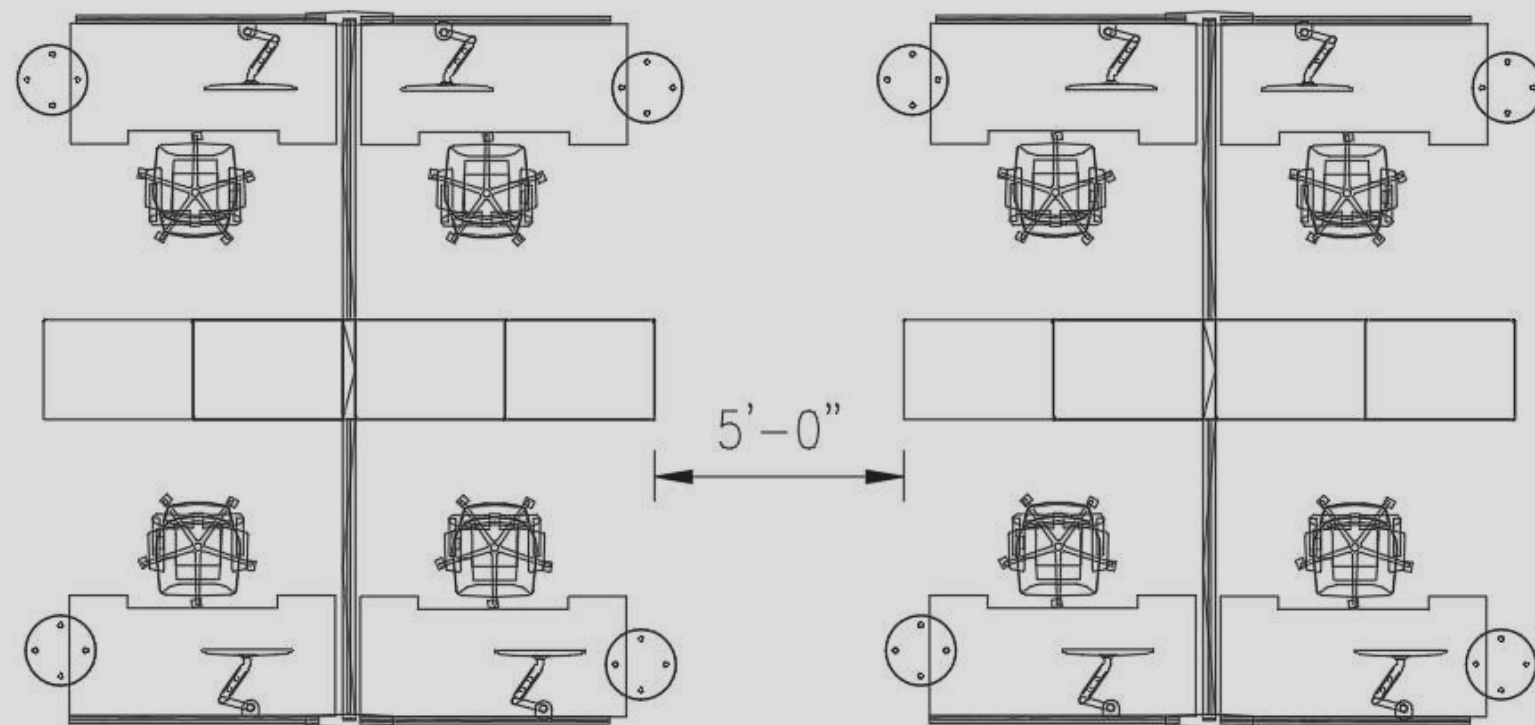
## ○ **Steelcase: Ology**

Ology is a height adjustable desking system that can rise from 26" up to 48". It supports the physiology and biology of workers to make the workplace a more health-conscious environment. An optional soft edge profile helps to significantly reduce unhealthy pressure on forearms, and reduce feelings of shoulder and neck fatigue

**The Buoy** provides a comfortable seat while helping to improve posture, and the wobbling base helps to work out your core with greater ergonomics and long-term comfort than comparable office exercise balls.

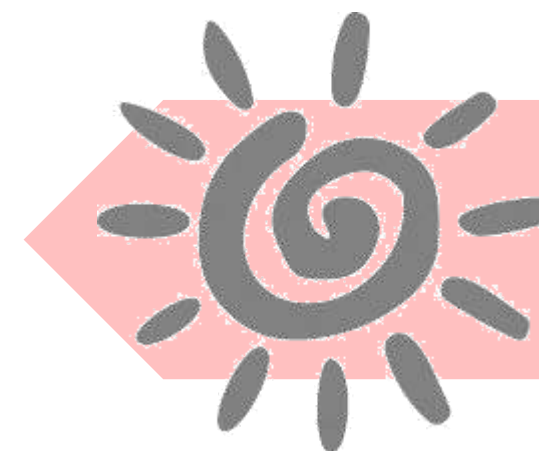


# ANTHROPOMETRIC AND ERGONOMIC FEATURES



Spacious workstations to provide comfort and privacy to the workers. Parallel stations allow for collaboration when needed. Pop of green on the panels, looking at green is proven to promote creativity.

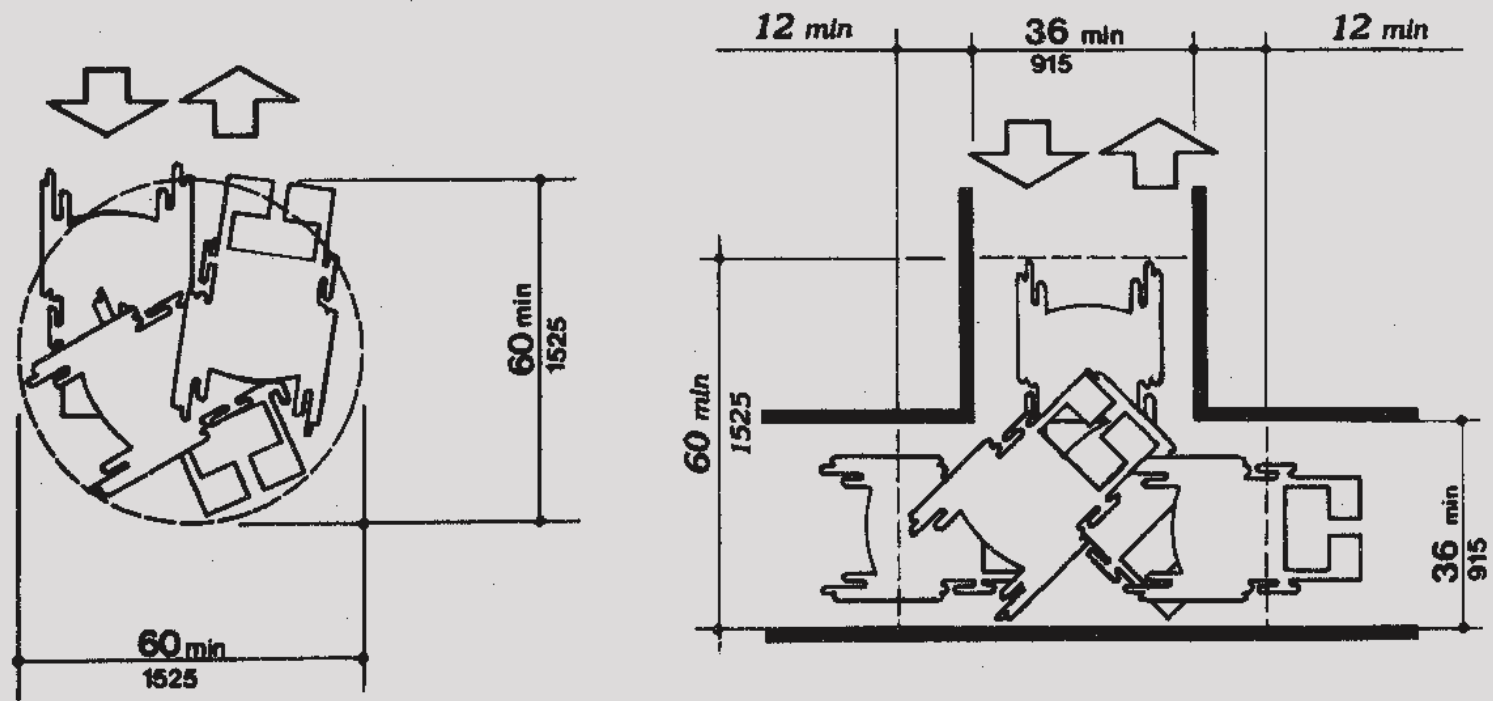
QtPro is a sound masking system engineered to provide exceptional sound masking in today's changing workplace.



Natural Light flows through the space which improves mood, focus, and sleep.



# USER CHALLENGES



All the corridors are wheelchair accessible. The private offices as well as the open workstations are compatible with wheelchairs with height adjustable desks and turning space.



There are several places integrated into the design for coming together to collaborate and work as a team. There are also rooms that accommodate for family needs such as a mother's room and private spaces to for personal phone calls.



Throughout the space there are light fixtures/ ceiling panels that are inspired by the city scape of Richmond, VA and its reflection onto the James River.



# USER CHALLENGES



The space is rich with African American inspired design. Wide winnowing baskets, known as fanners, were the earliest and most important type of coiled basketry made by Africans in North America. These baskets are used in the space as vibrant wall art. There is also African inspired fabrics throughout the space on panels and lounge chairs.



# COLOR RATIONALE

The color scheme stems from the concept of “Inhale-Exhale”. It draws inspiration from tobacco, how people would take smoke breaks and the hard labor tobacco required.



# SECTIONS

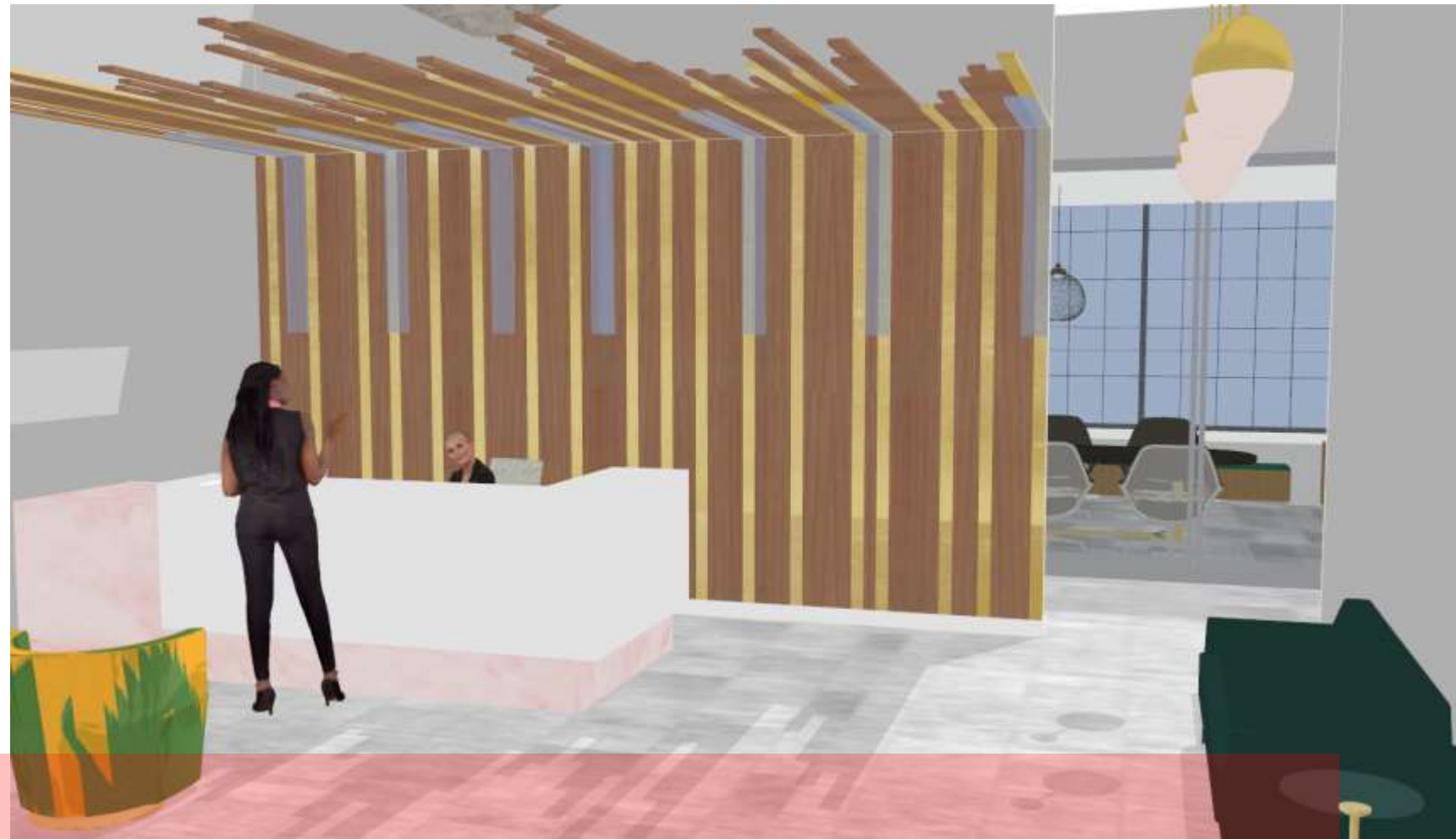
East to West – South Side





# PERSPECTIVES

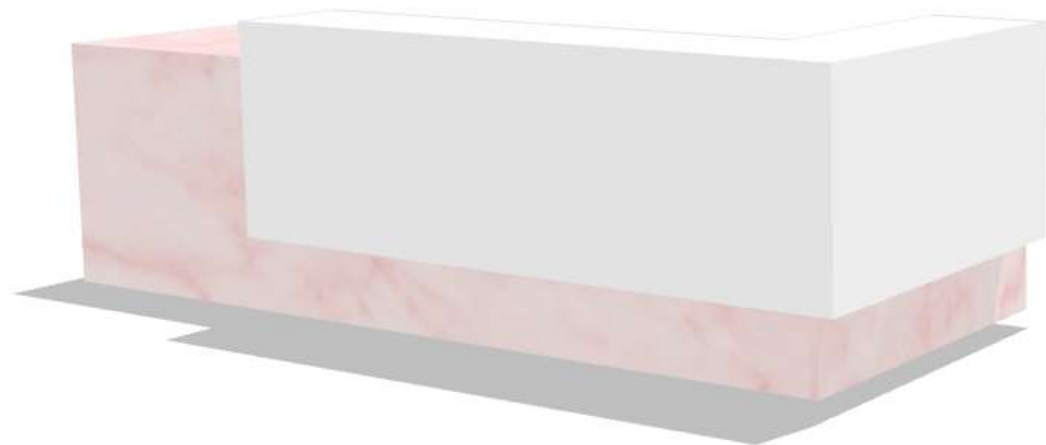
Reception





# FURNITURE & FINISHES

Reception



Option #1



Option #2



# PERSPECTIVES

Open Workstations





# FURNITURE & FINISHES

## Open Workstations



Option #1



Option #2



# PERSPECTIVES

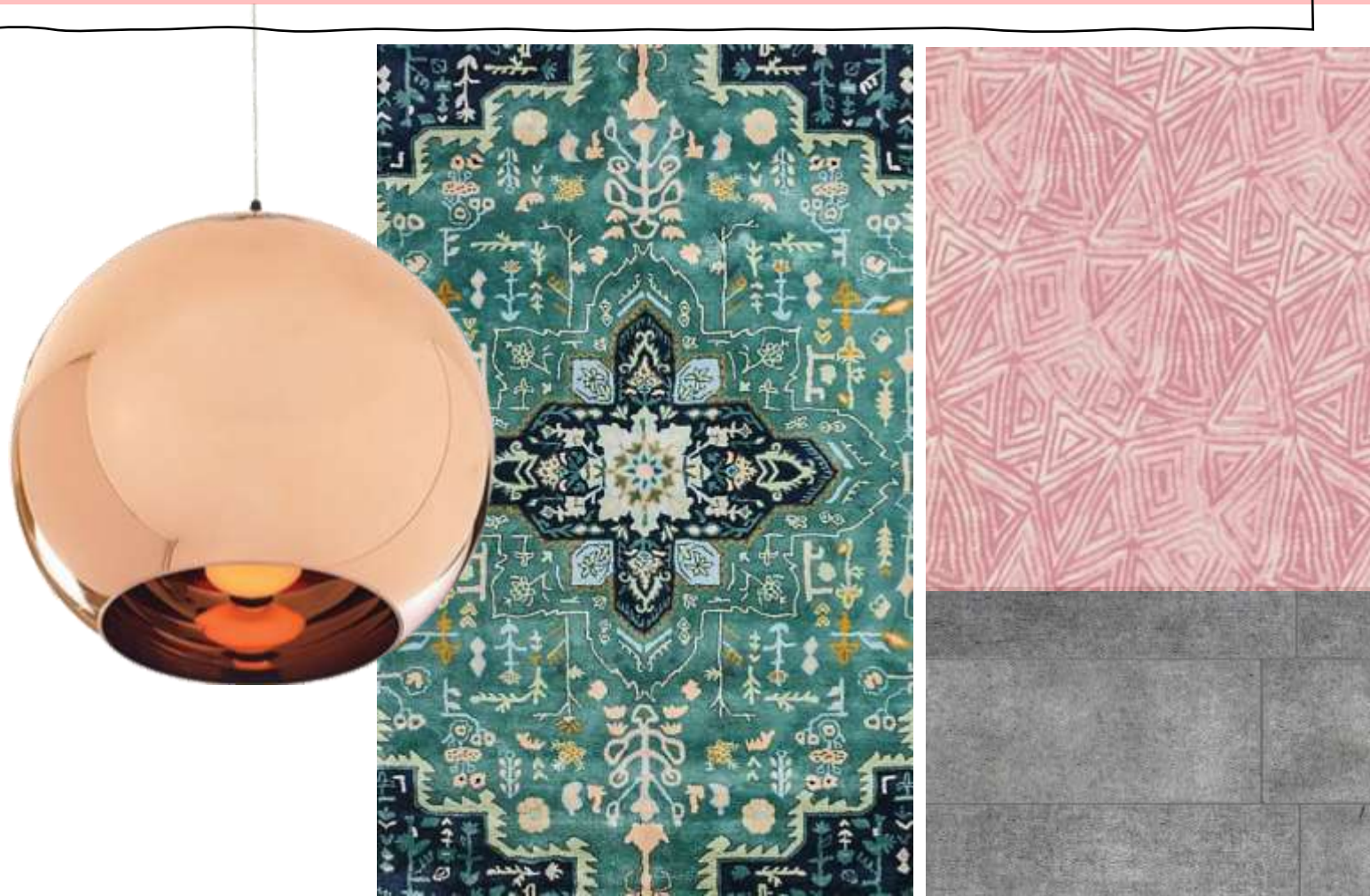
Cafe





# FURNITURE & FINISHES

Cafe



Option #1



Option #2