



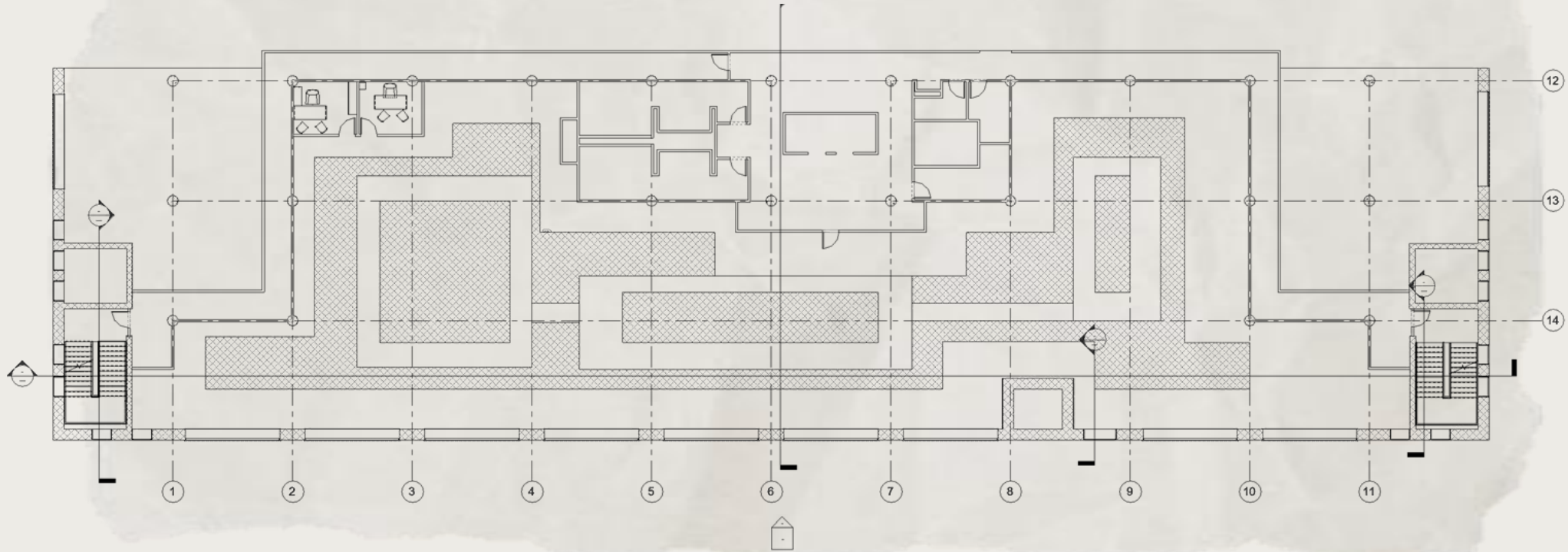
*Leah Thompson Design*

*Portfolio 2*

*Design 3202*

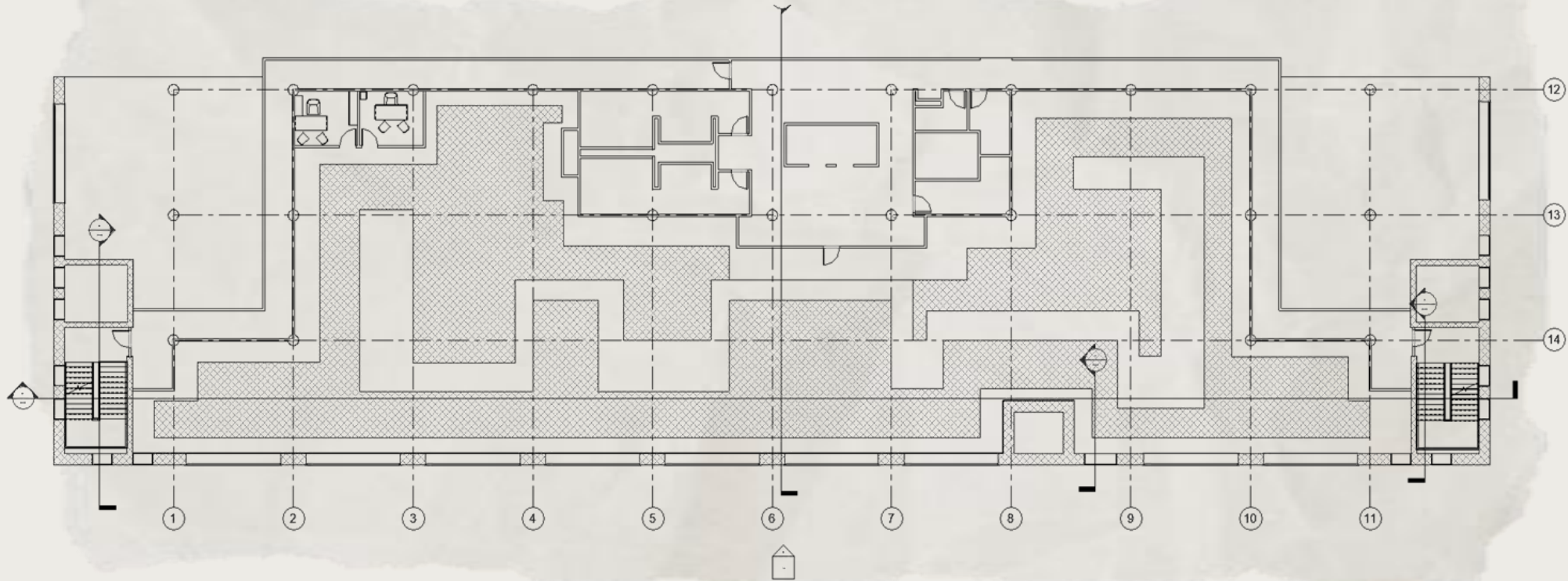
# Circulation Plan

## Circulation One

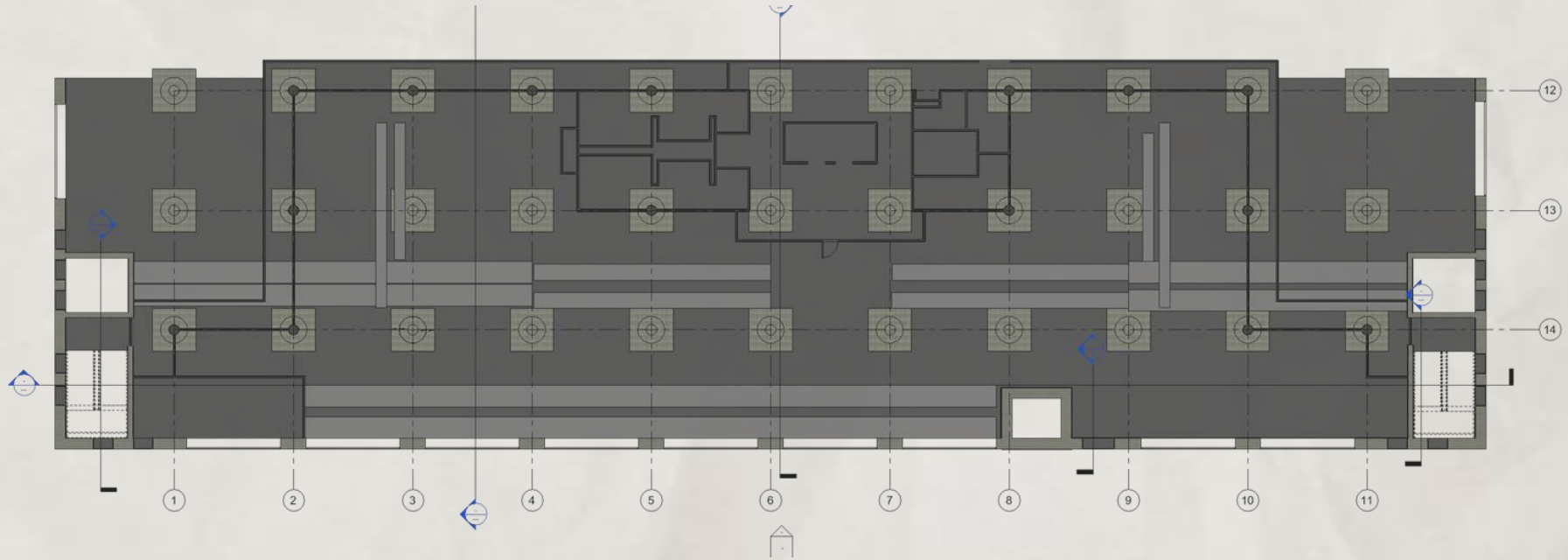


# Circulation Plan

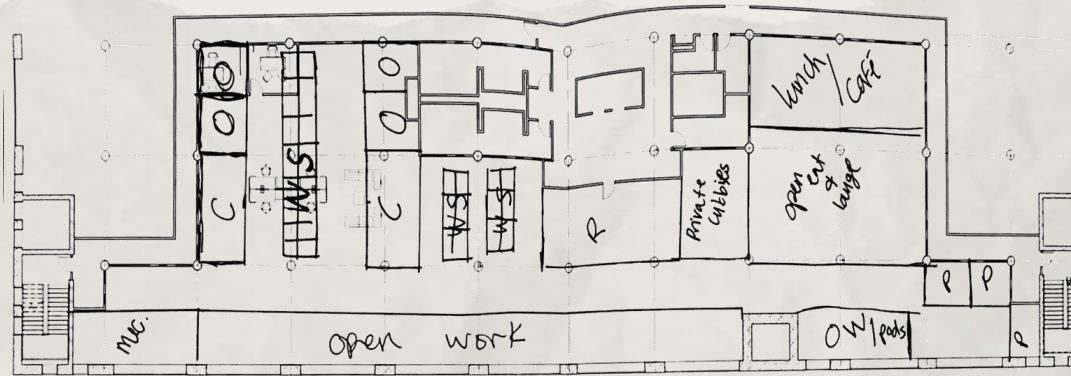
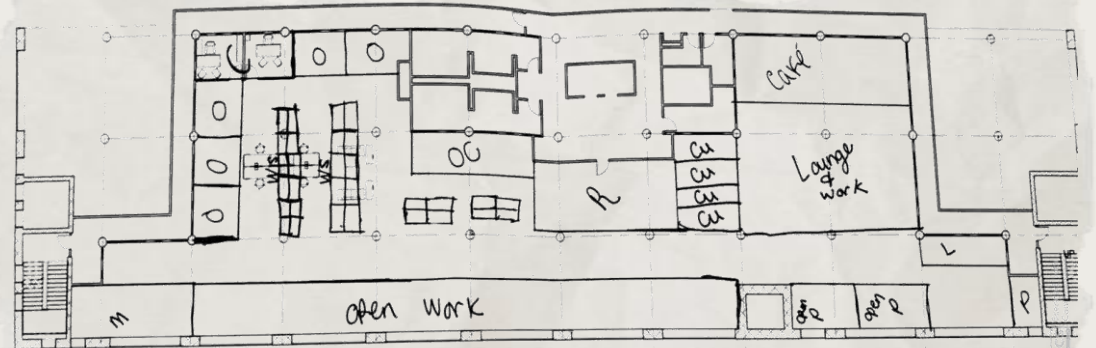
## Circulation Two



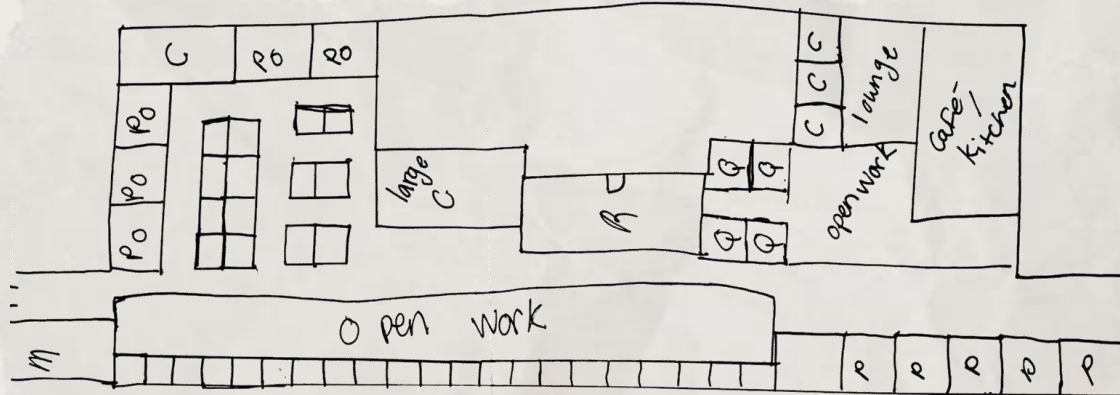
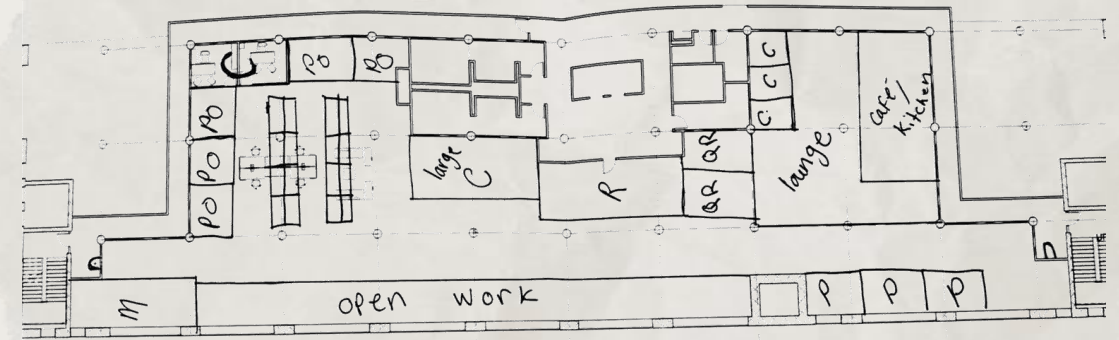
# Systems RCP



# Space Plan Sketches



# Space Plan Sketches



Final

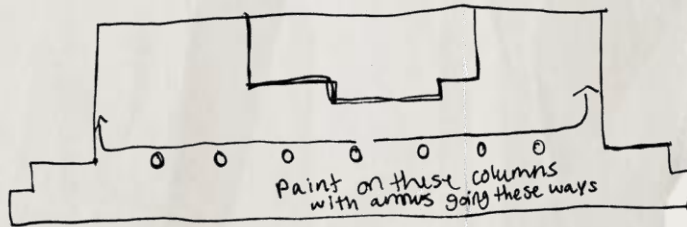


# Problem Resolution Sketches

## Wayfinding



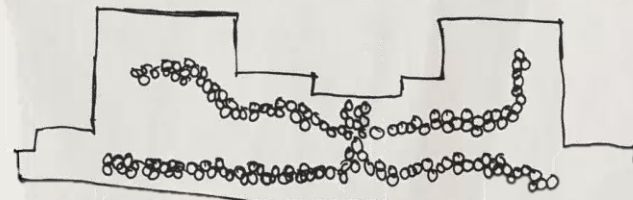
Way Finding  
- using the columns  
and walls to paint  
arrows or a design to direct  
people through



Paint on these columns  
with arrows going these ways

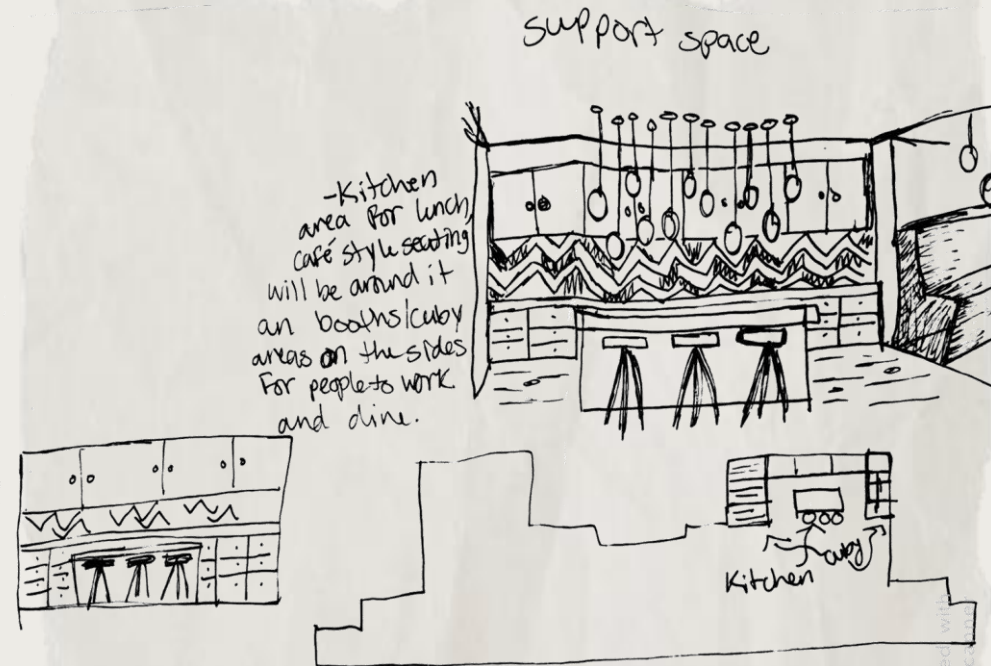
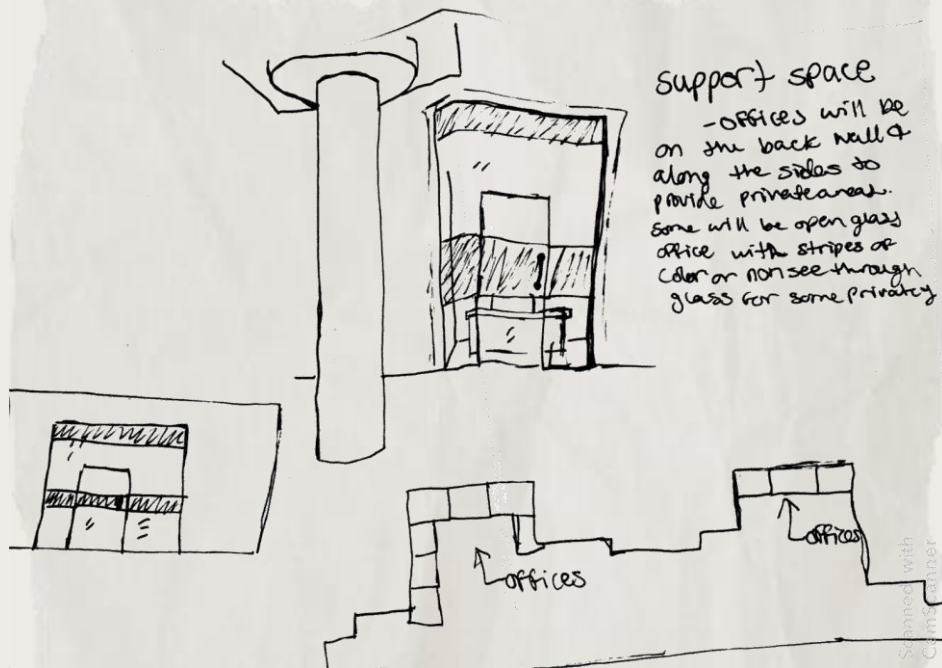


Way Finding  
- using flooring change will  
help people find their way.  
- It will be circles to go with  
into theme not be put in the shape  
of circulation path.



# Problem Resolution Sketches

## Support Space



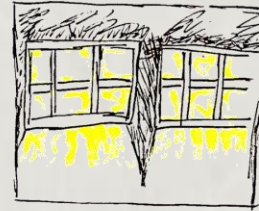


# Problem Resolution Sketches

## Ceiling & Daylight



Scanned with CamScanner



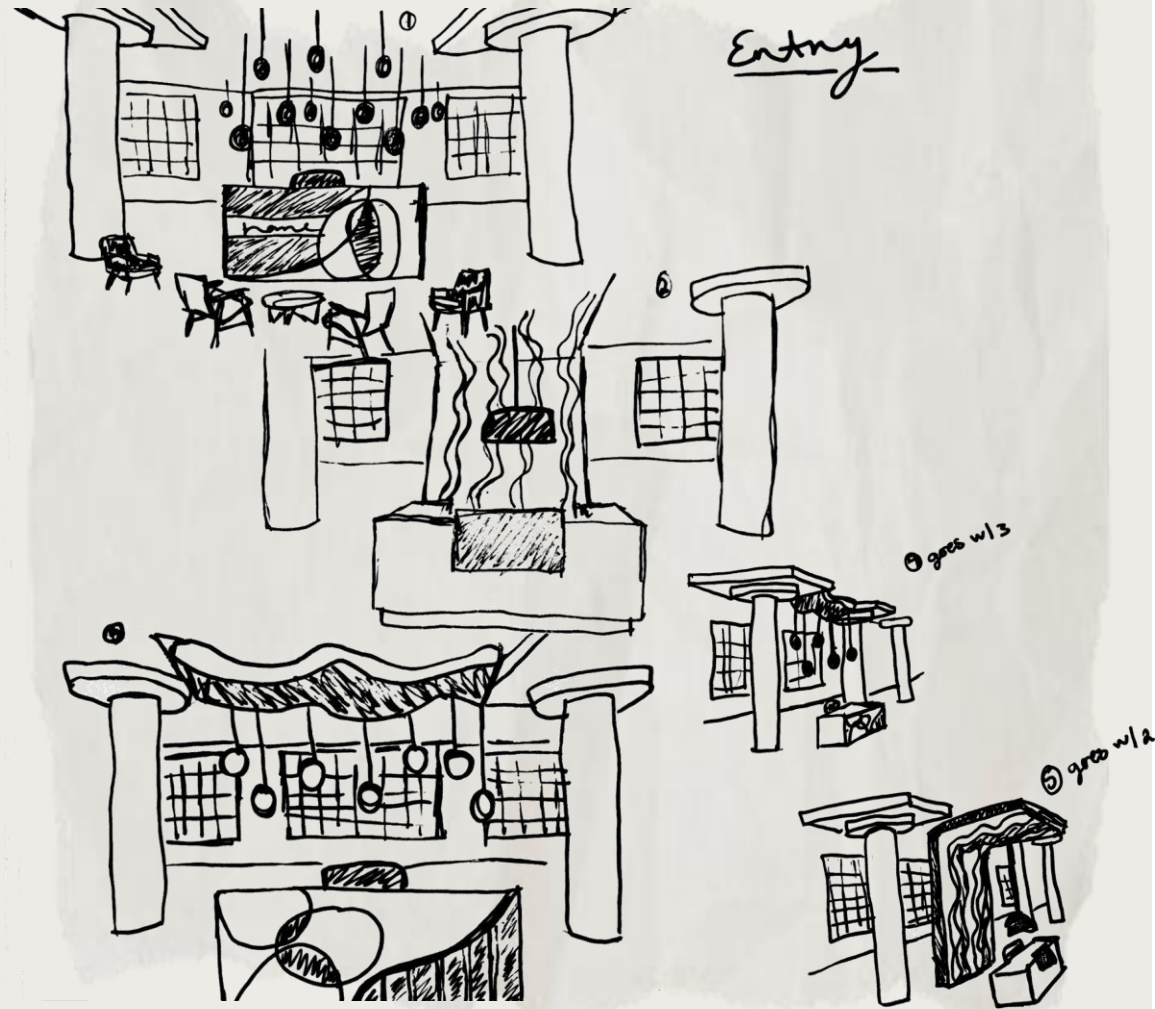
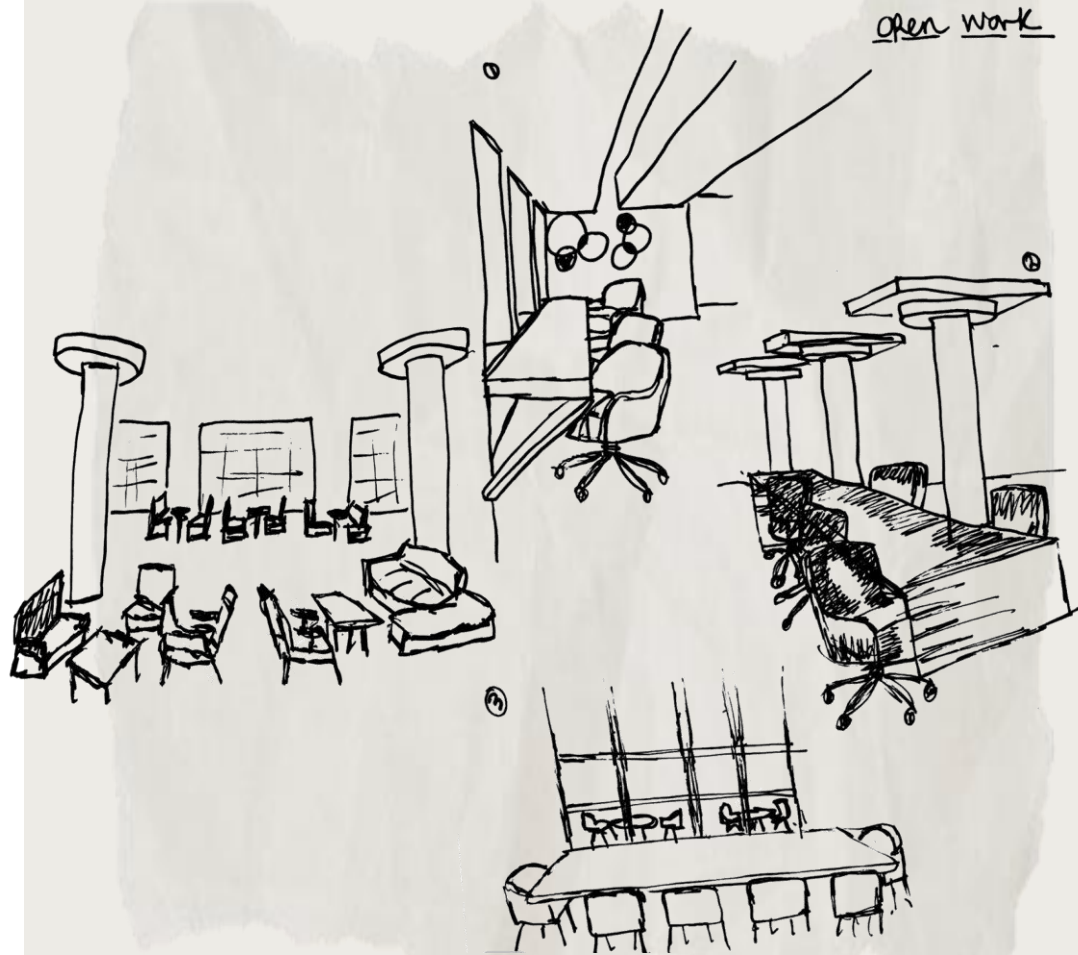
Day light  
sunlight will be coming in most of the day and will shed a lot of light. People who are working by windows stations will



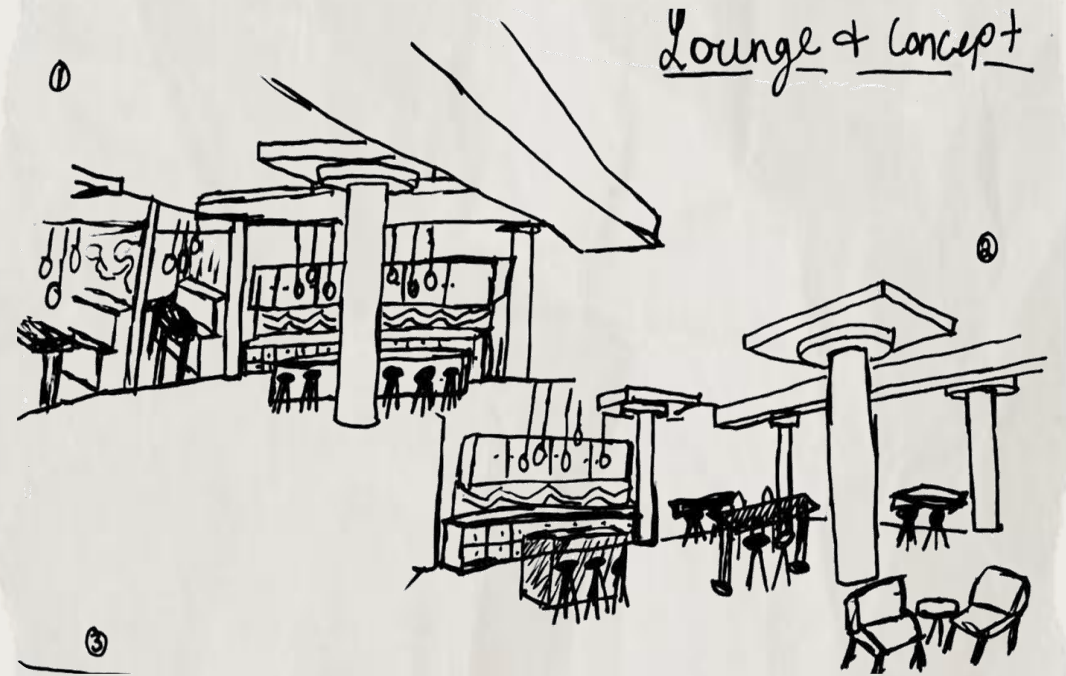
Scanned with CamScanner



# Design Sketches



# Design Sketches



# Lighting Model



# Lighting Model

