

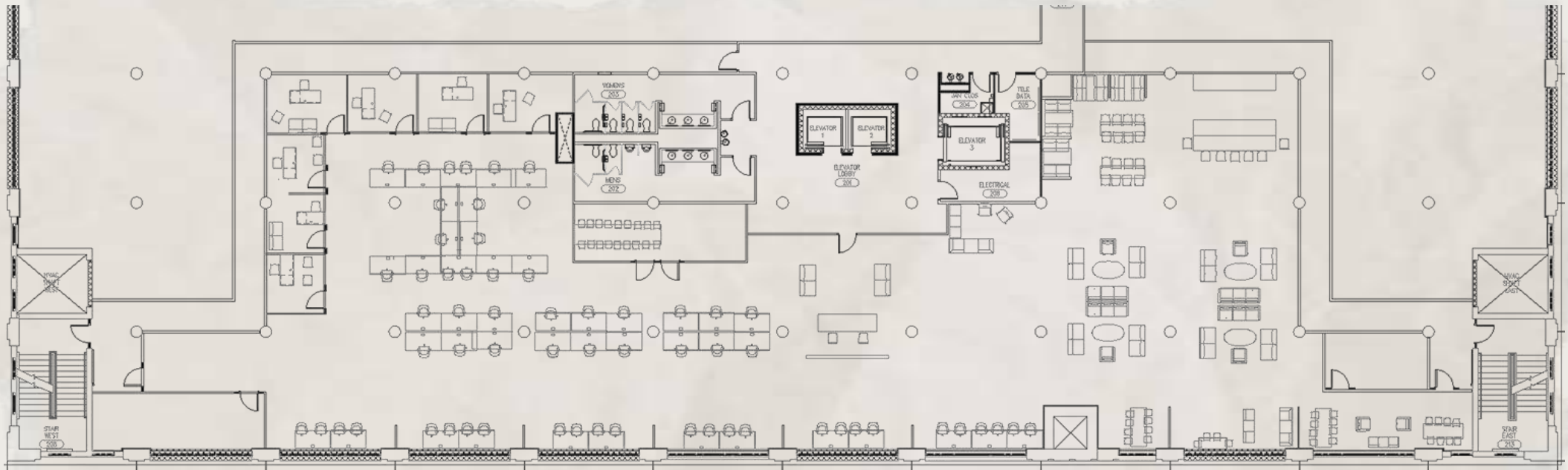


Leah Thompson Design

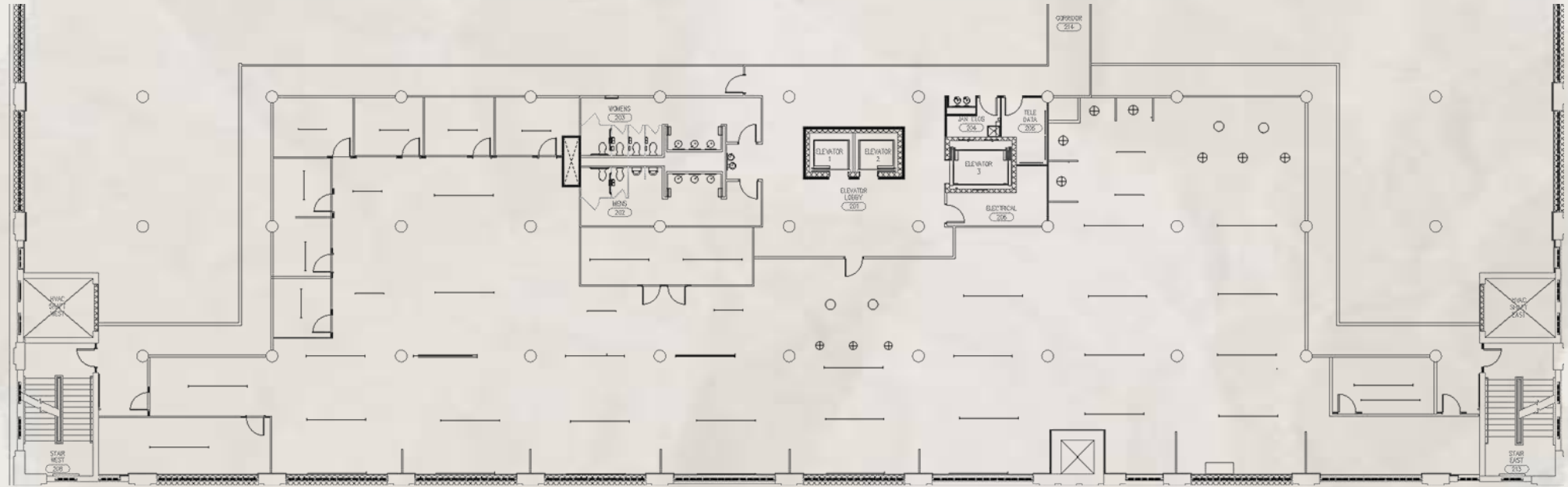
Portfolio 3

Design 3202

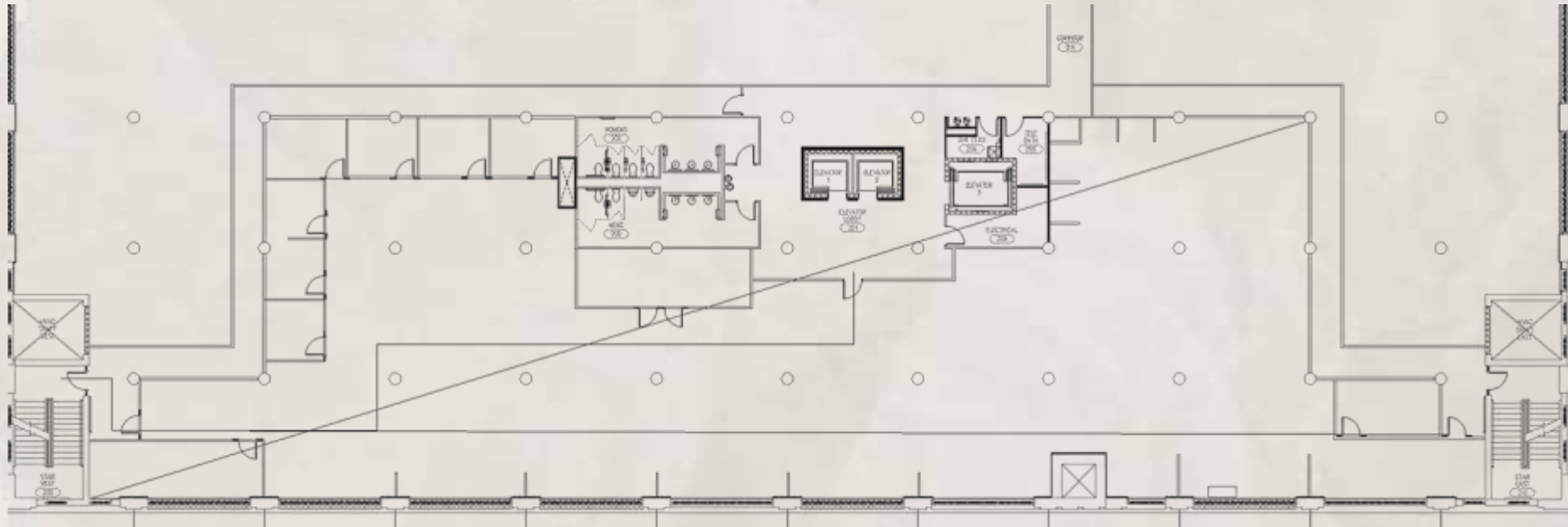
furniture Plan



Reflected Ceiling Plan



Life Safety Plan



Distance of Exit Path:164' Distance of Diagonal:216' Distance between stairs:219'



Life Safety Plan

Building Construction and Occupancy									
Construction Type	Sprinklers?		Occupancy Type						
Type I	Yes		B						
Exit Requirements: Number and Arrangement of Exits									
Space Designation	# of Exits		Travel Distance		Arrangement: Means of Egress				
	Required	Shown on Plans	Allowable Distance	Actual Distance Shown on Plans	Req'd Distance Between Exits		Actual Distance Shown on Plans		
Suite 3100	2	2	300'-0"	164'	72'		219'		
Notes:									
Use Group or Space Designation	(A)	(B)	Calculated Occupant Load = A/B	©		Exit Width (Inches)			
	Area = Sq. Ft.	Area per Occupant		Egress per Occupant		Required Width = (A/B)xC		Actual Width	
				Stair	Level	Stair	Level	Stair	Level
Suite 3100	10,087	100	100	.3"	.2"	30"	20"	60"	132"



East West Section



Color Rationale



RETRO-MODERN

Bright fun colors
that make for an
energetic vibe.
Combining new age
and vintage color
combinations.



Reception finishes

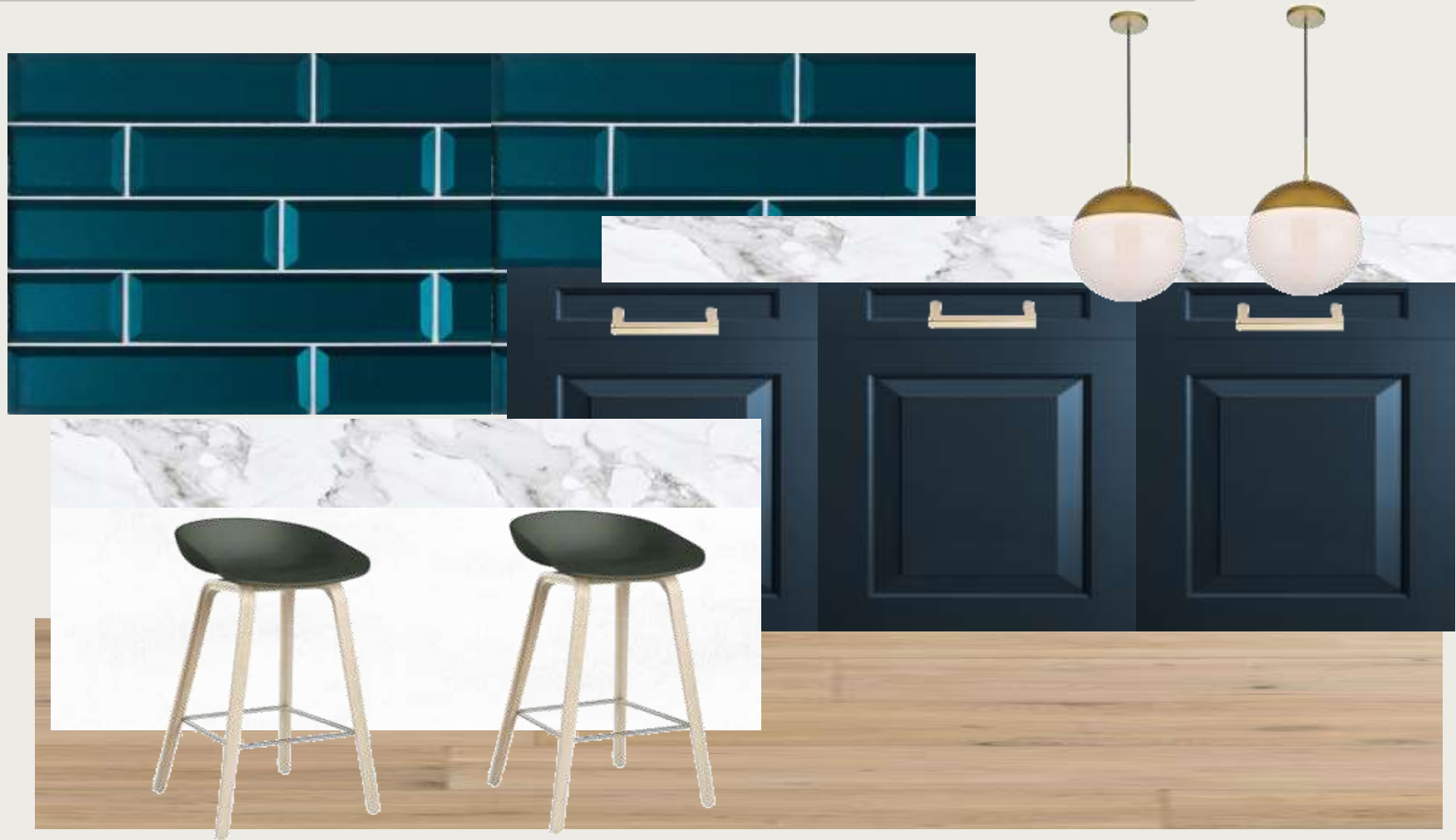


Lounge finishes

good
vibes
only



Café finishes



Café Seating finish



Work Area finish



Reception



Lounge Area



Café Seating



Café Kitchen



Work Area



Ergonomics



- Monitor at arm's length away
- Wrists straight and hands at or below elbow level

- Chair height so knees are more level with hips



Usey Challenges



One Family One Space

When one family with different generations works in one space it can be difficult. In this workspace there are very many different environments and spaces for each person. The younger people may choose a more relaxed and collaborative area and the older members could choose an office or workstation for more privacy. The Retro Modern concept allows for all generations to express themselves.

An African American family from Church Hill would be attracted to this office because of the 1950s/60s feel. A Motown vide with a modern twist. A place where all generations fit in.

