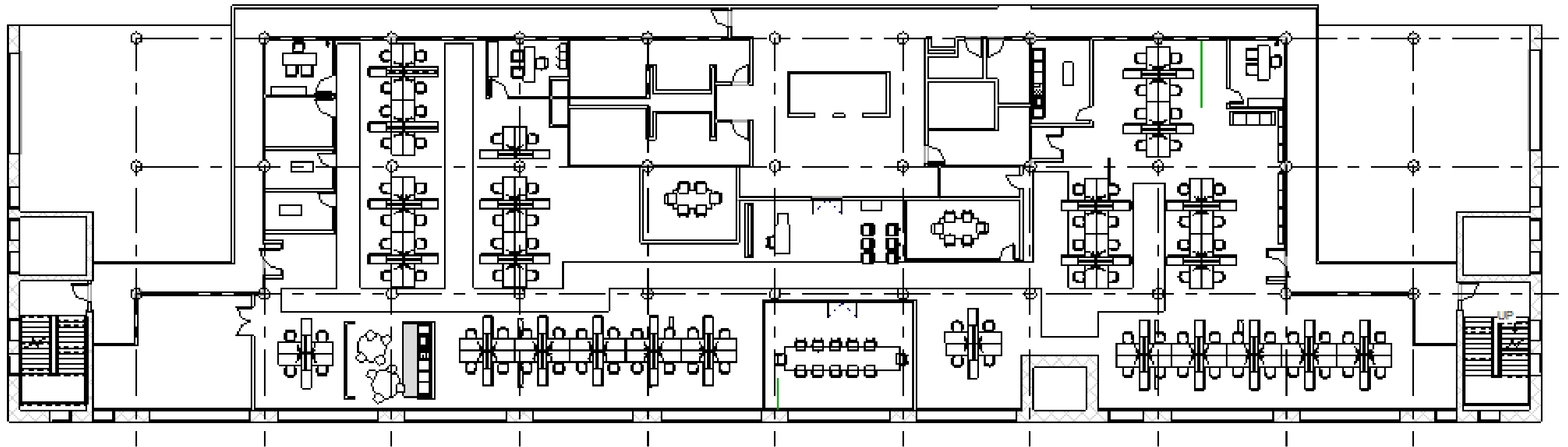


# Portfolio Three



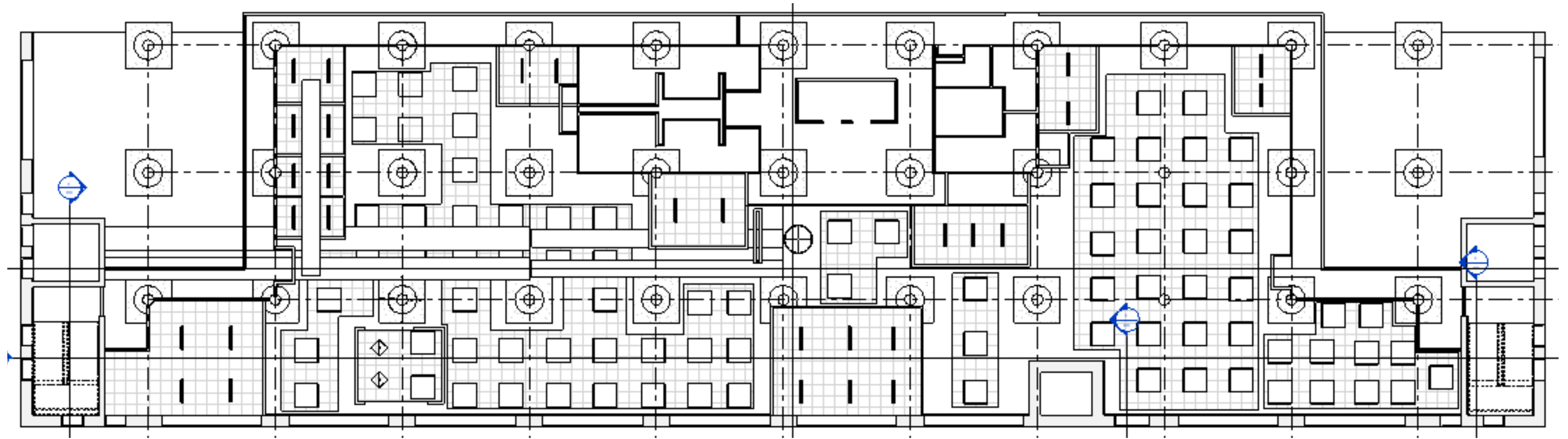
Bri Barker  
3202 SP20

# Furniture Plan



\*PLAN NOT TO SCALE\*

# Reflected Ceiling Plan



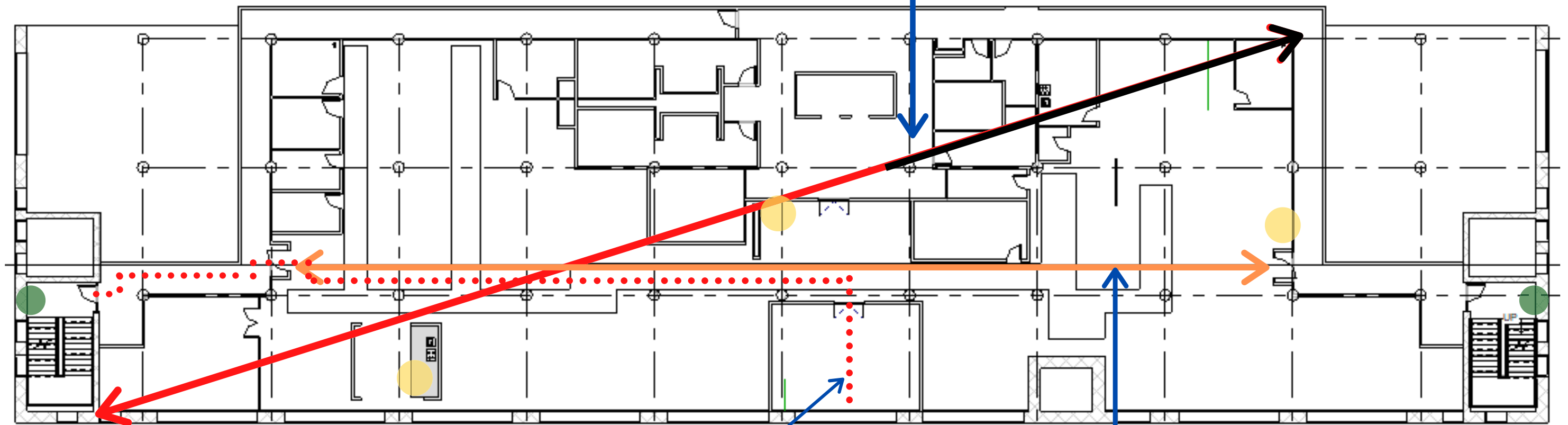
\*PLAN NOT TO SCALE\*

# Life Safety Plan

- FIRE EXTINGUISHERS
- SAND PIPES

Occupant Load  
 $10,087\text{SF} / 100 = 101$

Diagonal  
 $215' / 1/3 = 72'$



Travel Distance 147'

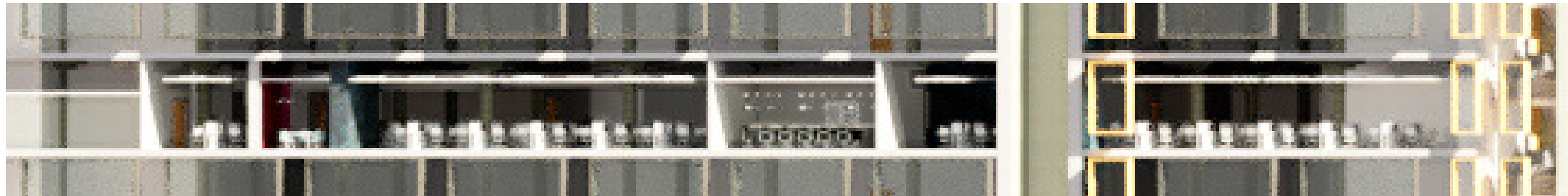
Exits are 169' apart  
from each other

\*building is sprinklered\*  
\*plan is not to scale\*



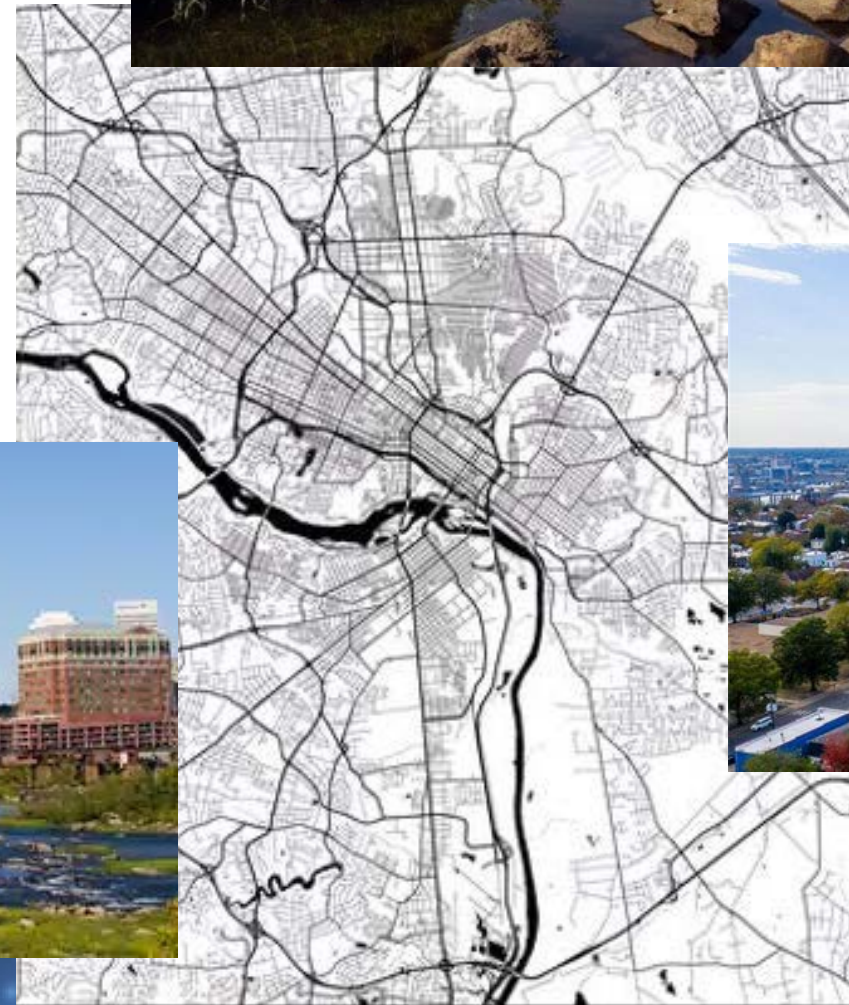


# E/W Sections



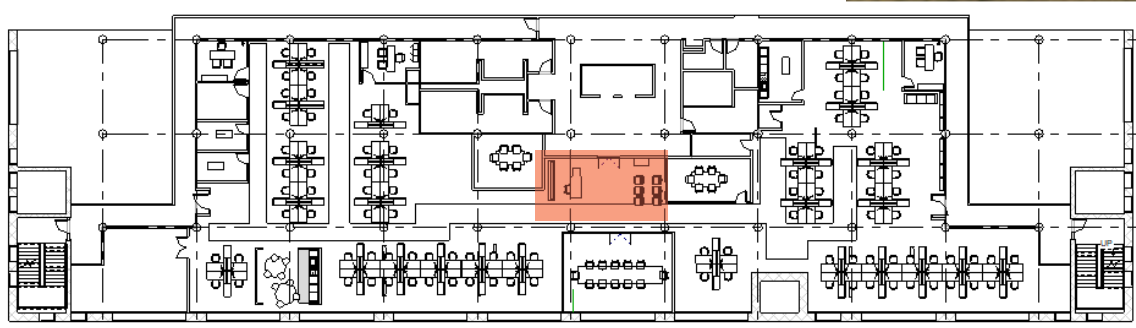
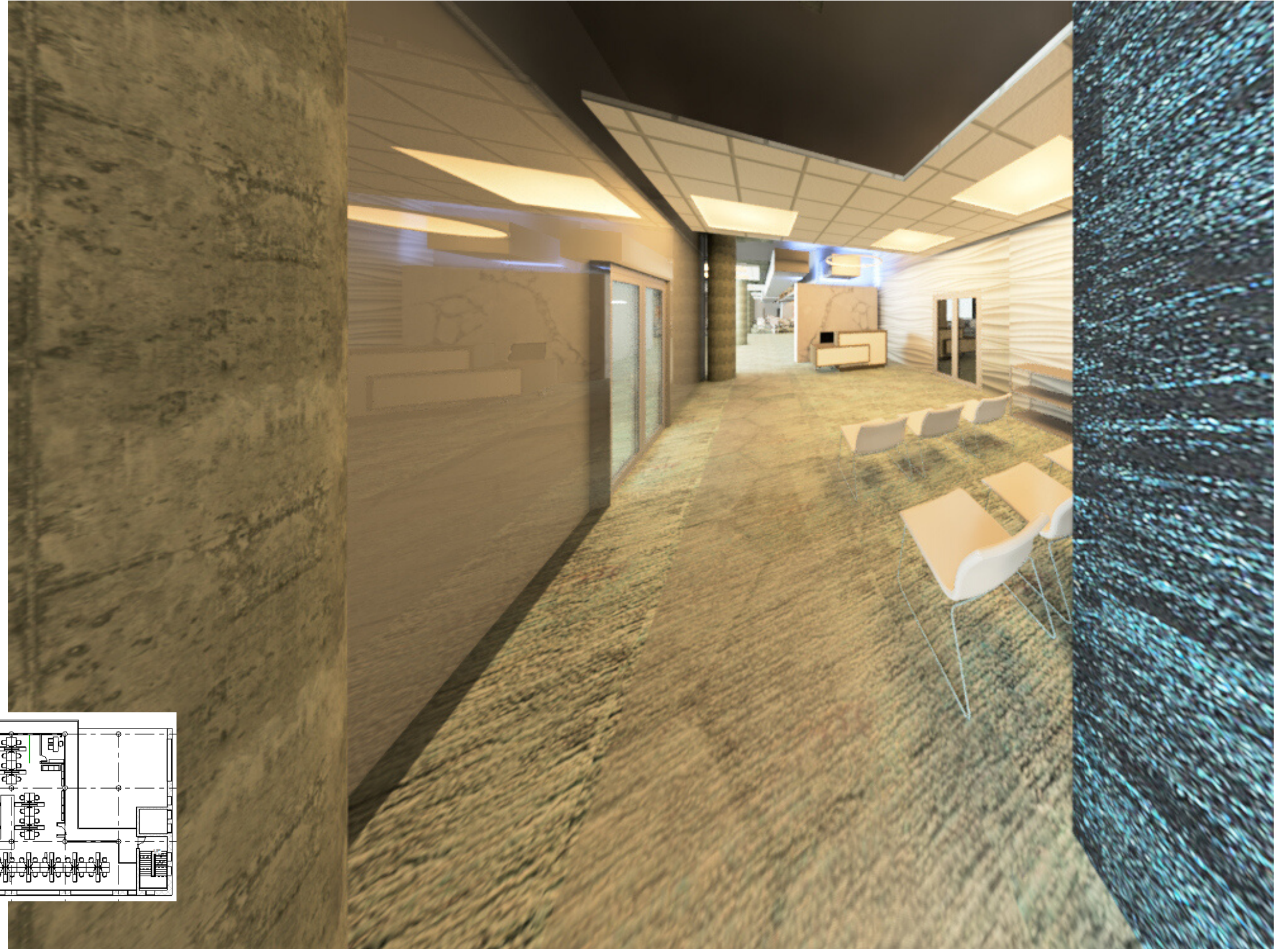
# Color Rationale

- inspired by the urban areas and cityscapes
- modern sleek design with pops of color
- straight lines to mimic high rise buildings in downtown area
- organically shaped light fixtures in various places throughout to mimic graffiti
- colors and textures pulled from nearby historic neighborhood, Churchill



# Rendered Perspectives

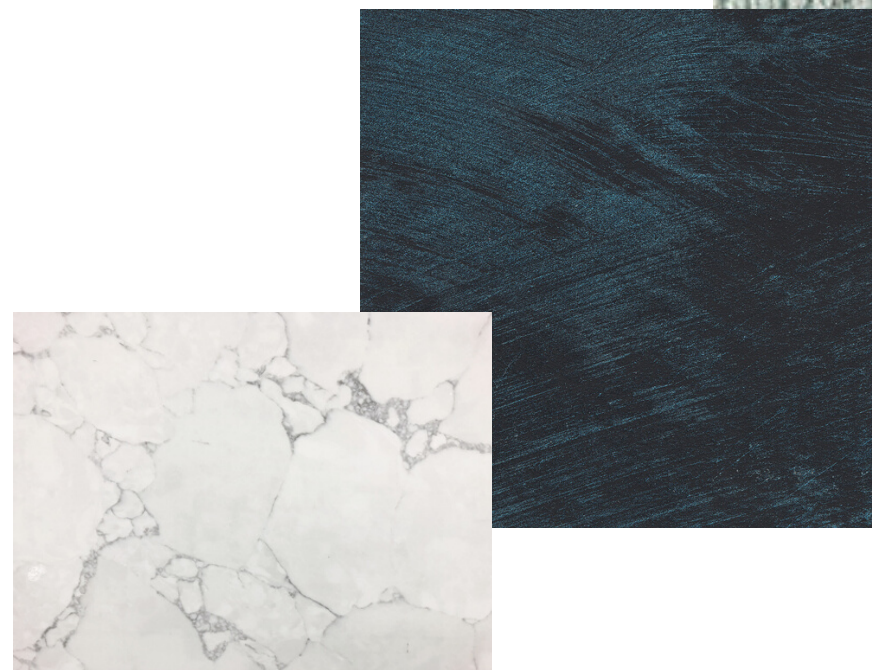
Entry/Reception





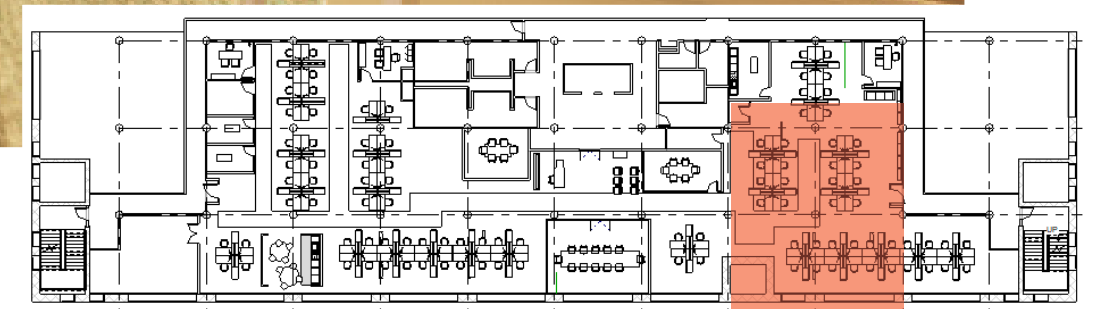
# Furniture and Finishes

Entry/Reception



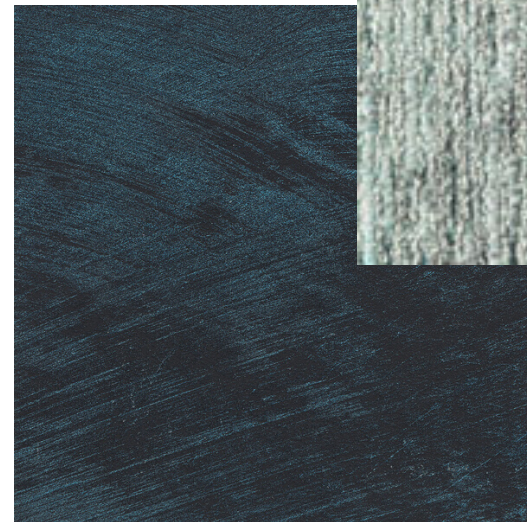
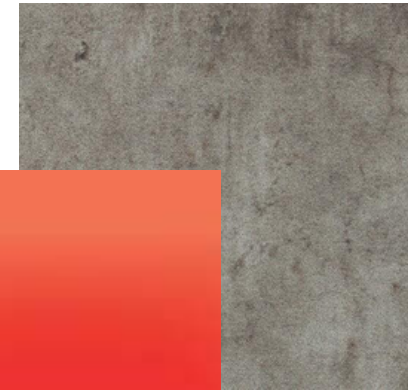
# Rendered Perspectives

Open Work Area



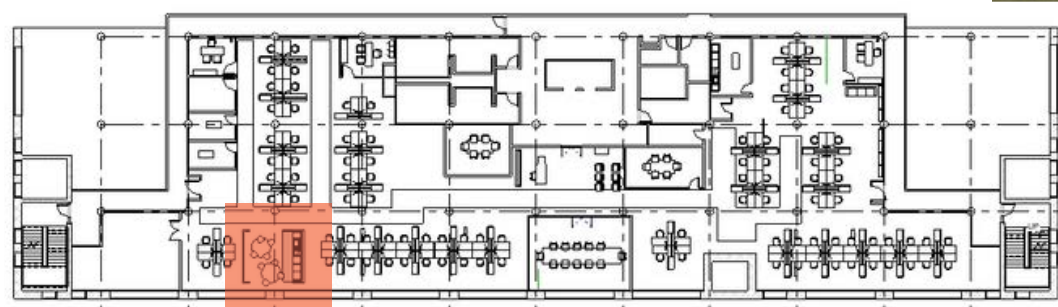
# Furniture and Finishes

Open Work Area



# Rendered Perspectives

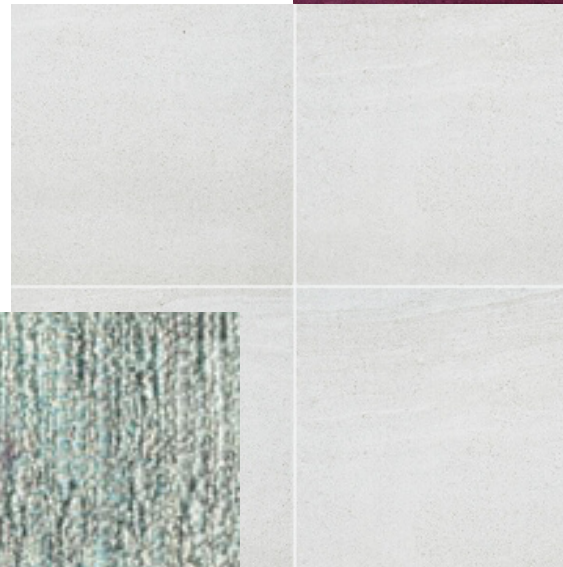
Lounge/Breakroom



# Furniture and Finishes



Lounge/Breakroom



# Anthropometrics & Ergonomics

## Steelcase Reply Office Chair

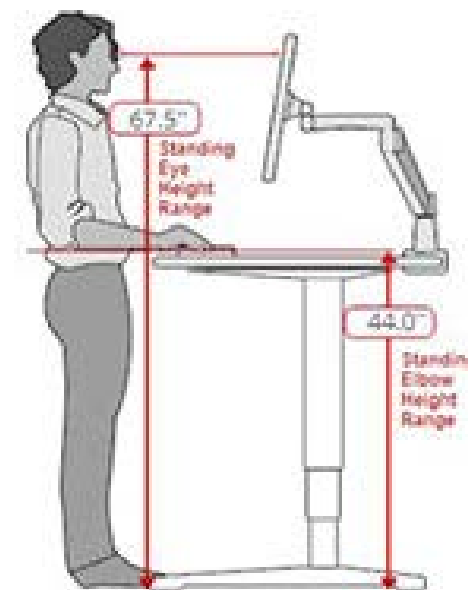


- adjustable arms help to eliminate tension in wrists
- adjustable lower back for comfort when sitting for a long time
- exclusive mesh woven with chenille yarn to offer dynamic support and softness
- adjustable height, seat depth and recline for complete user customization

## Steelcase Ology Adjustable Height Desk



- adjustable height of desk to specific user height
- ability to alternate between sitting and standing positions which reduces fatigue and injury from being in the same position for too long
- adjustable desks help improve productivity and energy levels of employees



# User Challenges

## Target User Design



- target client is a African family that have lived in the historic Churchill neighborhood
- pops of bright color throughout to represent the clients culture
- colors and textures to incorporate the environment around Richmond and Churchill where their family has resided for years
- blend the feel of urban and suburban by combining textures and colors from both the Richmond city area and the suburban Churchill area

## Employee Experience



- access to natural light
- tools and spaces for creativity
- quiet spaces to rest and unplug
- active workstation options
- healthy food options on site
- variety of work areas for group work and private work

## Universal Design

making design accessible to everyone in society



- smooth level flooring and smooth transitions
  - widened doors and hallways
- accommodations for right and left handed use
- include automated doors for ease of use by everyone
- equip technology for the hearing and visually impaired
- wider walkways and doorways